

Modular generation of fluorescent phycobiliproteins†

Cite this: *Photochem. Photobiol. Sci.*, 2013, **12**, 1036Xian-Jun Wu,^{a,b} Kun Chang,^b Juan Luo,^b Ming Zhou,^b Hugo Scheer^c and Kai-Hong Zhao^{*b}

Phycobiliproteins are brightly-fluorescent light-harvesting pigments for photosynthesis in cyanobacteria and red algae. They are also of interest as fluorescent biomarkers, but their heterologous generation *in vivo* has previously required multiple transformations. We report here a modular approach that requires only two DNA segments. The first codes for the apo-protein. The second codes for fusions capable of chromophore biosynthesis and its covalent attachment to the apo-protein; it contains the genes of heme oxygenase, a bilin reductase, and a chromophore lyase. Phycobiliproteins containing phycoerythrobilin ($\lambda_{\text{fluor}} \sim 560$ nm), phycourobilin ($\lambda_{\text{fluor}} \sim 500$ nm), phycocyanobilin ($\lambda_{\text{fluor}} \sim 630$ nm) or phycoviolobilin ($\lambda_{\text{fluor}} \sim 580$ nm) were obtained in high yield in *E. coli*. This approach facilitates chromophorylation studies of phycobiliproteins, as well as their use for fluorescence labeling based on their high fluorescence.

Received 11th November 2012,
Accepted 8th March 2013

DOI: 10.1039/c3pp25383j

www.rsc.org/paps

Introduction

Phycobiliproteins are brightly fluorescing photosynthetic light-harvesting pigments.^{1–3} In cyanobacteria and red algae they are the major components of the large antenna complexes, or phycobilisomes, which consist of a core complex with radiating rods. The rods contain phycocyanin (PC) and often also phycoerythrins (PE) or phycoerythrocyanin (PEC), while the core contains allophycocyanins (APC) and a core-membrane linker.⁴ PEs and PEC absorb between 500–560 nm and fluoresce at 580 nm, PC absorbs at 615 nm and fluoresces at 635 nm (for an example on the absorption and fluorescence properties, see Fig. 1). APC absorbs between 610–650 nm and fluoresces at 660 nm, while the core-membrane linker absorbs between 610–660 nm and fluoresces at 670 nm.⁵ When assembled in the phycobilisome, they form a highly-efficient cascade where excitation energy is transferred from high energy PE or PEC *via* PC to low energy APC, and eventually is funneled downwards *via* the core-membrane linker to the reaction centers.¹ The high fluorescence yield of the biliproteins contributes to the high-efficiency energy transfer, which, in principle, also makes them excellent candidates for fluorescent biomarkers.^{6–8}

There are four types of chromophores covalently attached to the phycobiliproteins, namely, phycocyanobilin (PCB), phycoerythrobilin (PEB), phycoviolobilin (PVB) and phycourobilin (PUB).^{3,9,10} All are derived from heme, which is first oxidatively cleaved by heme oxygenase, HO1, to biliverdin,¹¹ followed by an enzymatic reduction to PCB through the function of PCB:ferredoxin oxidoreductase, PcyA;¹² if PEB is formed, the PEB:ferredoxin oxidoreductase (PebA/PebB or PebS) is acting instead.^{13,14} Then the chromophores are attached to cysteine residues of their apoproteins by a set of lyases. Some of these lyases are, in addition, capable of isomerizing PCB to PVB, or PEB to PUB.^{15–18}

In principle, the strong fluorescence and their variation in excitation and emission wavelengths make phycobiliproteins excellent tools for intracellular applications. The need for chromophore biosynthesis and enzymatic attachment, however, has largely restricted such applications.⁶ It could be shown more recently that cyanobacterial phycobiliproteins have also been assembled heterologously in *E. coli*.^{9,10} This latter approach required the multi-plasmid-based production of: (i) the apoprotein, (ii) heme oxygenase, (iii) one or more reductases required to generate the chromophore from biliverdin, and (iv) one or more lyase(s).^{19–21} A somewhat simplified approach reducing the number of plasmids required for transformants capable of producing biliproteins has recently been demonstrated.²² It is based on expressing the structural gene fused to genes coding for chromophore biosynthesis from endogenous heme. It requires the introduction of only a single gene for labeling and yields fluorescent proteins, which, however, as a disadvantage, exhibit a rather large size due to the fusion approach.²² We now report a modular alternative using two sets of plasmids, by this we are able to overcome the

^aCollege of Environmental Science and Engineering, Huazhong University of Science and Technology, Wuhan 430074, P. R. China^bState Key Laboratory of Agricultural Microbiology, Huazhong Agricultural University, Wuhan 430070, P. R. China. E-mail: khzhao@163.com; Tel: +86-27-87284301^cDepartment Biologie I, Universität München, Menzinger Str. 67, D-80638 München, Germany

†Electronic supplementary information (ESI) available. See DOI: 10.1039/c3pp25383j

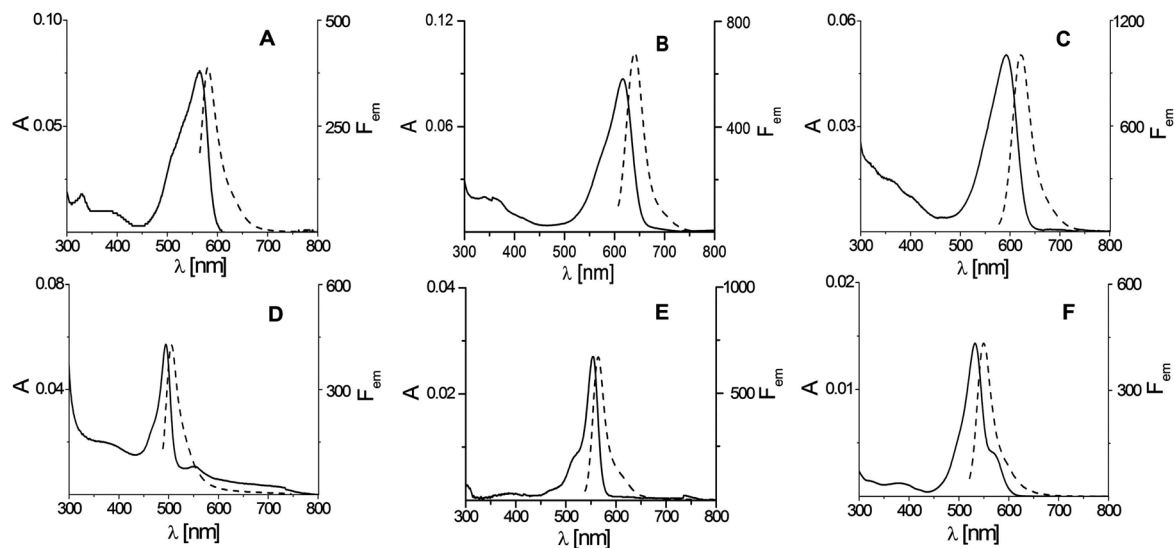


Fig. 1 Absorption (—) and fluorescence emission spectra (---) of PVB-PecA (A), PCB-CpcB(C-84) (B), PCB-CpcB(C-155) (C), PUB-PecA (D), PEB-CpcB(C-84) (E), PEB-CpcB(C-155) (F). The biliproteins were generated by combination of the apoprotein and biosynthesis plasmids shown in Table S2,† purified with Ni²⁺ affinity chromatography and then kept in KPB (20 mM, 0.5 M NaCl, pH 7.0). Emission spectra were obtained by excitation at 550 nm for PVB-PecA, 590 nm for PCB-CpcB(C-84), 560 nm for PCB-CpcB(C-155), 470 nm for PUB-PecA, 520 nm for PEB-CpcB(C-84), and 500 nm for PEB-CpcB(C-155).

above-mentioned obstacles. Each member of the first set contains a single gene coding for one of the apoproteins. Members of the second set contain, as fusions, all genes required for biosynthesis of a particular chromophore plus its attachment to the desired apoprotein site. By transformation with appropriate pairwise combinations of one member of each set, phycobiliproteins with a molecular weight of ~16 kDa and fluorescing in various colors could be produced in *E. coli*, significantly expanding the toolbox of fluorescent protein tags.

Materials and methods

Cloning and expression

All genetic manipulations were carried out according to standard protocols.²³ In order to construct plasmids for fluorescence labeling of cells in various colors, appropriate gene segments were PCR-amplified from the following previously reported plasmids with the primers listed in the supplement (Table S1†): pET-cpcB carrying *cpcB* that encodes the apoprotein of the β -subunit of PC (β -CPC);²⁴ plasmid pET-pecA carrying *pecA* that encodes the apo-protein of α -PEC of *Mastigocladus laminosus*;¹⁵ dual plasmid pACYC-ho1-pcyA carrying *ho1* and *pcyA* of *Nostoc* sp. PCC7120 (*Nostoc*) that yields PCB in *E. coli*;²¹ dual plasmid pACYC-ho1-pebS carrying *ho1* and *pebS* that yields PEB in *E. coli*;²⁵ pCDF-cpcS carrying *cpcS* that encodes the S-type lyase of *Nostoc*;²⁶ pCDF-cpcT carrying *cpcT* that encodes the T-type lyase of *Nostoc*;²⁴ and pCDF-rpcG carrying *rpcG* that encodes RpcG (isomerase-lyase) of *Synechococcus* sp. WH8102 (*Synechococcus*).¹⁵

All PCR products were ligated into the cloning vector pBlue-script (Stratagene). After sequence verification, the gene

segments were subcloned into the expression vectors pACYC, pCDF or pET30 (Novagen) (Table S2†). For various color fluorescence labeling of cells, the pACYC-derived vectors, pCDF-derived vectors or pET30-derived vectors were transformed into *E. coli* Tuner™ (DE3) (Novagen) according to the combinations in Table S2.† The multiply-transformed cells were cultured at 18 °C in Luria-Bertani (LB) medium supplemented with kanamycin (20 $\mu\text{g ml}^{-1}$), chloramphenicol (17 $\mu\text{g ml}^{-1}$) or streptomycin (50 $\mu\text{g ml}^{-1}$). We adjusted the growth temperature and expression time after induction of cells, instead of the concentration of isopropyl β -D-thiogalactoside, which lets phycobiliproteins be assembled gradually and cells be labeled well. After induction with isopropyl β -D-thiogalactoside (1 mM) for 4–12 hours, the cells were centrifuged at 12 000g for 3 minutes at 4 °C.

Protein assay

For isolation of the fluorescent proteins, the cell pellet was resuspended in ice-cold potassium phosphate buffer (KPB, 20 mM, pH 7.0) containing 0.5 M NaCl and disrupted by sonication for 5 min at 200 W (JY92-II, Scientz Biotechnology, Ningbo, China). The suspension was centrifuged at 12 000g for 15 min at 4 °C and the supernatant purified *via* Ni²⁺-affinity chromatography on chelating Sepharose (Amersham Biosciences) developed with KPB containing 0.5 M NaCl. The bound proteins remaining on the column were eluted with the saline KPB, containing in addition imidazole (0.5 M). After collection, the protein sample was dialyzed twice against the saline KPB.²¹

Protein concentrations were determined by the Bradford assay,²⁷ calibrated with bovine serum albumin and SDS-PAGE was performed using the buffer system of Laemmli.²⁸ Proteins

were stained with Coomassie brilliant blue and those containing bilins were identified by Zn²⁺-induced fluorescence.²⁹

Spectral analyses

All chromoproteins were investigated by UV-Vis absorption spectroscopy (Beckman-Coulter DU 800). Covalently bound PCB, PEB, PUB or PVB in biliprotein derivatives were quantified after denaturation with acidic urea (8 M, pH 1.5) by their absorption at: 662 nm ($\epsilon = 35\,500\text{ M}^{-1}\text{ cm}^{-1}$) for PCB;³⁰ 550 nm ($\epsilon = 42\,800\text{ M}^{-1}\text{ cm}^{-1}$) for PEB;³¹ 495 nm ($\epsilon = 104\,000\text{ M}^{-1}\text{ cm}^{-1}$) for PUB;³² and, 595 nm ($\epsilon = 38\,600\text{ M}^{-1}\text{ cm}^{-1}$) for PVB.³³ Fluorescence spectra were recorded at room temperature with a model LS 55 spectrofluorimeter (Perkin-Elmer). Fluorescence quantum yields, Φ_F , were determined in KPB (pH 7.0) using the known $\Phi_F = 0.27$ of C-PC from *Nostoc*³⁴ and $\Phi_F = 0.98$ of the biosynthetically-obtained PEB-CpcA³⁵ as standards.

Microscopic analysis

The appropriate strains were induced to express the required phycobiliprotein label and grown for several hours, until the fluorescence became visible by eye. After harvesting, the cells were deposited on a glass slide, and micrographs taken with a fluorescence microscope (Immersol 518F, Carl Zeiss) fitted with a color CCD camera (SPOT RT3 25.2 2 Mp color Mosaic, SPOT).

Results and discussion

Fusions of phycobiliprotein lyases, HO1 and PcyA (or PebS) have the activities of both lyases and phycobilin biosynthesis

It was shown earlier that the heterologous biosynthesis of biliproteins can be simplified by using fusion proteins; an example is the fusion of HO1::PcyA which produces PCB in *E. coli*.²² This approach has now been extended by adding a lyase gene, *rpcG*, *cpcS* or *cpcT*, to the plasmid containing *ho1::pcyA*. The resulting plasmids in *E. coli* generated the following fusion proteins: RpcG::HO1::PcyA, CpcS::HO1::PcyA, and CpcT::HO1::PcyA (Table S2†). The first product contains the E/F type of isomerase-lyase, RpcG in which the E and F

subunits are already fused; it can isomerize PCB to PVB and PEB to PUB, and then simultaneously attach the isomerized bilins to suitable apo-proteins.¹⁵ All three activities of the original enzyme components were still active in the fusion product, as shown by co-expression with appropriate apoproteins yielding orange-fluorescent proteins carrying the PVB chromophore (Fig. 1A). Thus, only two, instead of four, DNA segments have to be introduced to generate fluorescent holoproteins (Table S2†). Similarly, red-fluorescent proteins were generated by constructs combining the PCB generation (HO1, PcyA) with the non-isomerizing S- or T-type lyases (Fig. 1B and C). S-type lyases catalyze the covalent attachment of PCB at C-84 of both β -CPC and β -PEC, and at many other related sites of both subunits of APC and PE. T-type lyases are specific for the C-155 site of both β -CPC and β -PEC.^{24,26,36}

In order to expand the spectral variation of fluorescent biliprotein labels, biliverdin has been attached to the variants derived from bacterial phytochrome.^{37,38} However, neither phycobiliproteins nor phycobiliprotein lyases could accommodate biliverdin,⁹ so PEB was tried in this work. PEB can be synthesized from biliverdin by the heterodimeric PebA/PebB lyase;¹² the single-subunit lyase, PebS, combines the activities of both subunits.¹³ We therefore chose *pebS* for PEB production and generated the following constructs: *rpcG::ho1::pebS*; *cpcS::ho1::pebS*; and, *cpcT::ho1::pebS* (Table S2†). RpcG::HO1::PebS had both isomerase-lyase activity from RpcG and PEB-producing activity from HO1::PebS. Together with a suitable apo-protein such as, for example, PecA (apo- α -phycocerythrocyanin), bluish-green fluorescing phycobiliproteins containing PUB can be obtained (Fig. 1D).¹⁵ CpcS::HO1::PebS or CpcT::HO1::PebS combined S-lyase or T-lyase activity with PEB-producing activity. Together with suitable apo-proteins such as, for example, CpcB (apo- β -phycocyanin), this resulted in orange fluorescing phycobiliproteins containing PEB (Fig. 1E and F).¹⁵

When RpcG or CpcT were fused with either HO1::PcyA or HO1::PebS, the relative activities were lower (~50%) compared with the formerly reported four-plasmid approach (Table 1);^{15,21} however, when the fusion constructs contained *cpcS*, the holoprotein yield was actually increased compared with the four-plasmid approach. When CpcS was fused with

Table 1 Quantitative absorption and fluorescence data of the fused phycobiliproteins

Fused phycobiliproteins	Absorption		Fluorescence		Fused enzymes	Relative ^a activity
	λ_{max} [nm]	ϵ_{vis} [$\text{M}^{-1}\text{ cm}^{-1}$]	λ_{max} [nm]	Φ_F		
PVB-PecA	564	$9.6 (\pm 0.2) \times 10^4$	582	0.07 (± 0.01)	RpcG::HO1::PcyA	40%
PUB-PecA	494	$15.2 (\pm 0.3) \times 10^4$	506	0.25 (± 0.01)	RpcG::HO1::PebS	58%
PCB-CpcB(C-84)	616	$12.9 (\pm 0.4) \times 10^4$	641	0.16 (± 0.01)	CpcS::HO1::PcyA	132%
PEB-CpcB(C-84)	553	$13.7 (\pm 0.2) \times 10^4$	566	0.80 (± 0.02)	CpcS::HO1::PebS	265%
PCB-CpcB(C-155)	592	$11.1 (\pm 0.5) \times 10^4$	621	0.49 (± 0.02)	CpcT::HO1::PcyA	58%
PEB-CpcB(C-155)	531	$8.7 (\pm 0.5) \times 10^4$	551	0.99 (± 0.02)	CpcT::HO1::PebS	66%

Spectra were obtained in potassium phosphate buffer (20 mM, pH 7.0). Extinction coefficients and fluorescence yields were averaged from two independent experiments. ^a Relative activities are given in comparison to four-plasmid experiments^{15,21} with the same individual enzymes and apoproteins.

HO1::PcyA and, especially, with HO1::PebS, the relative activities were markedly enhanced (see Table 1): the effect is particularly striking (160% enhancement) with CpcS::HO1::PebS. CpcS catalyzes the chromophorylation of phycobiliproteins by a chaperone-like process.³⁹ It first binds phycobin in an appropriate conformation, and then shuttles phycobin to the apo-phycobiliprotein. The fusion may facilitate the shuttling process. Lower yields can have various reasons, including, in particular, conformational changes caused by the fusion.

The fusions can be applied in various color fluorescence labeling

The activity of fusions containing lyases and phycobin-yielding enzymes (Table 1) considerably simplifies the biosynthesis of phycobiliproteins: in their presence, apo-phycobiliproteins are smoothly chromophorylated (Fig. 1). The resulting singly-chromophorylated phycobiliproteins fluoresce in the green, yellow/orange or red spectral regions, depending on the presence of PUB, PEB/PVB or PCB, respectively, as chromophore (Fig. 2). The well-separated narrow excitation and fluorescence emission bands are advantageous for multi-color labeling (Fig. 2). A combination of PEB as donor with PCB as acceptor is difficult because most lyases and apoproteins do not discriminate these chromophores. A better approach for two-color labeling is by combining a non-modifying apoprotein with a modifying apoprotein. This is similar to the biosynthesis of phycoerythrocyanin, where PCB is attached unmodified to the β -subunit, while being transformed to PVB in the α -subunit; this provides for excellent FRET in cyanobacterial light-harvesting. Using PecA with CpcB(C-84) in combination with PCB, the absorption maxima are at 564 and 616 nm, the fluorescence maxima at 582 and 641 nm; combining them instead with PEB, the absorption maxima are at 494 and 553 nm, and the

fluorescence maxima at 506 and 566 nm (Table 1). These are good separations for FRET experiments, they can even be enlarged if the modifying apoprotein is generating a urobilin chromophore as donor (absorption at 430 nm).

The results with the three lyases in this study indicate that the same approach may be extended to other apoproteins and lyases. The two-plasmid approach principally allows any combination of chromophore with a suitable apoprotein. The approach is restricted by the specificity of some of the lyases, but the known matched combinations can generate biliproteins that cover practically continuously the spectroscopic region from 500–670 nm.^{9,10,16,40,41} On multi-color labeling, auto-catalytic biliproteins that can be chromophorylated in the absence of lyases, such as the chromophore domains of phycobilisome core-membrane linker and/or cyanobacteriochromes,^{22,25} could be applied. Since the biliproteins are auto-catalytically chromophorylated, we do not need more lyases for multi-color labeling, so simplifying the construction of plasmids. The approach is also advantageous compared with previously used single-plasmid approaches that generated rather large chromophore-containing fusion proteins.²² Instead, the approach now generates biliproteins of only ~150 amino acids, which is an essential pre-condition for applications as protein tags in living cells. It also allows rapid screening for further downsizing, and seems at the same time useful for studying not only phycobiliprotein biosynthesis but also phycobilisome assembly, besides many imaginable applications in studying intracellular protein-protein interactions using modern microscopic techniques.

Abbreviations

APC	Allophycocyanin
HO1	Heme oxygenase 1
KPB	Potassium phosphate buffer
<i>Nostoc</i>	<i>Anabaena (Nostoc) sp. PCC 7120</i>
PC	Phycocyanin (prefixes stand for C: cyanobacteria, R: rhodophyte)
PCB	Phycocyanobilin
PcyA	PCB: ferredoxin oxidoreductase
PE	Phycoerythrin
PEB	Phycoerythrobilin
PEC	Phycoerythrocyanin
PebS	PEB synthase
PVB	Phycoviolobin
RpcG	Phycourobilin: α -R-PC isomerase-lyase of <i>Synechococcus</i>
<i>Synechococcus</i>	<i>Synechococcus sp. WH8102.</i>

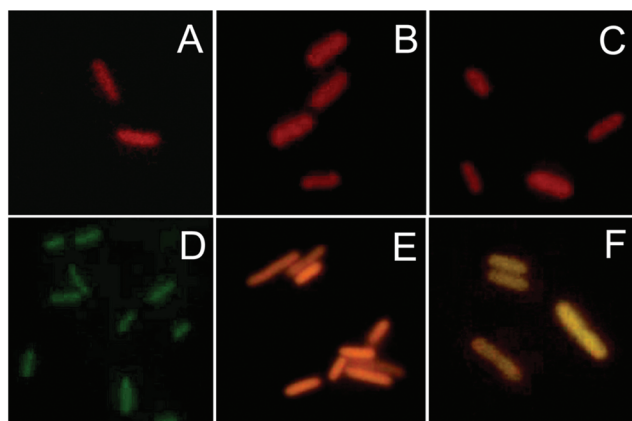


Fig. 2 *In situ* fluorescence of phycobiliproteins generated in *E. coli* cells by the two-plasmid approach. Fluorescence micrographs of PVB-PecA (A), PCB-CpcB(C-84) (B), PCB-CpcB(C-155) (C), PUB-PecA (D), PEB-CpcB(C-84) (E), and PEB-CpcB(C-155) (F). The biliproteins were generated by combination of the apoprotein and biosynthesis plasmids shown in Table S2.† Fluorescence measurements were done with an excitation filter (540–552 nm) and a long-pass fluorescence filter (≥ 590 nm) for chromoproteins containing PCB or PVB, and with an excitation filter (450–490 nm) and a long-pass fluorescence filter (≥ 515 nm) for chromoproteins containing PEB or PUB.

Acknowledgements

We are grateful to R. J. Porra (CSIRO-Plant Industry, Canberra, Australia) for help in preparing the manuscript. HS, KHZ (grant 31110103912) and KHZ (grant 21072068) are grateful for support by the National Natural Science Foundation of China.

References

- E. Gantt, in *Photosynthesis III: Photosynthetic Membranes and Light-Harvesting Systems*, ed. L. A. Staehelin and C. J. Arntzen, Springer Verlag, Berlin, 1986, pp. 260–268.
- A. N. Glazer, *Biochim. Biophys. Acta, Rev. Bioenerg.*, 1984, **768**, 29–51.
- W. A. Sidler, in *The molecular biology of cyanobacteria*, ed. D. A. Bryant, Kluwer, Dordrecht, 1994, pp. 139–216.
- A. N. Glazer, *Adv. Mol. Cell Biol.*, 1994, **10**, 119–149.
- H. Scheer, in *Light Reaction Path of Photosynthesis*, ed. F. K. Fong, Springer, Berlin, 1982, pp. 7–45.
- A. Glazer, *J. Appl. Phycol.*, 1994, **6**, 105–112.
- A. N. Glazer and L. Stryer, *Biophys. J.*, 1983, **43**, 383–386.
- V. T. Oi, A. N. Glazer and L. Stryer, *J. Cell Biol.*, 1982, **93**, 981–986.
- H. Scheer and K. H. Zhao, *Mol. Microbiol.*, 2008, **68**, 263–276.
- W. M. Schluchter, G. Shen, R. M. Alvey, A. Biswas, N. A. Saunee, S. R. Williams, C. A. Mille and D. A. Bryant, *Adv. Exp. Med. Biol.*, 2010, **675**, 211–228.
- S. I. Beale, *Chem. Rev.*, 1993, **93**, 785–802.
- N. Frankenberg and J. C. Lagarias, in *The Porphyrin Handbook*, ed. K. M. Kadish, K. M. Smith and R. Guilard, Academic Press, Amsterdam, 2003, pp. 211–236.
- T. Dammeyer, S. C. Bagby, M. B. Sullivan, S. W. Chisholm and N. Frankenberg-Dinkel, *Curr. Biol.*, 2008, **18**, 442–448.
- T. Dammeyer and N. Frankenberg-Dinkel, *J. Biol. Chem.*, 2006, **281**, 27081–27089.
- N. Blot, X. J. Wu, J. C. Thomas, J. Zhang, L. Garczarek, S. Böhm, J. M. Tu, M. Zhou, M. Plöschner, L. Eichacker, F. Partensky, H. Scheer and K. H. Zhao, *J. Biol. Chem.*, 2009, **284**, 9290–9298.
- A. Shukla, A. Biswas, N. Blot, N. F. Partensky, J. A. Karty, L. A. Hammad, L. Garczarek, A. Gutu, W. M. Schluchter and D. M. Kehoe, *Proc. Natl. Acad. Sci. U. S. A.*, 2012, **109**, 20136–20141.
- M. Storf, A. Parbel, M. Meyer, B. Strohmman, H. Scheer, M. G. Deng, M. Zheng, M. Zhou and K. H. Zhao, *Biochemistry*, 2001, **40**, 12444–12456.
- K. H. Zhao, M. G. Deng, M. Zheng, M. Zhou, A. Parbel, M. Storf, M. Meyer, B. Strohmman and H. Scheer, *FEBS Lett.*, 2000, **469**, 9–13.
- N. A. Saunee, S. R. Williams, D. A. Bryant and W. M. Schluchter, *J. Biol. Chem.*, 2008, **283**, 7513–7522.
- A. J. Tooley, Y. A. Cai and A. N. Glazer, *Proc. Natl. Acad. Sci. U. S. A.*, 2001, **98**, 10560–10565.
- K. H. Zhao, P. Su, J. M. Tu, X. Wang, H. Liu, M. Plöschner, L. Eichacker, B. Yang, M. Zhou and H. Scheer, *Proc. Natl. Acad. Sci. U. S. A.*, 2007, **104**, 14300–14305.
- J. Zhang, X. J. Wu, Z. B. Wang, Y. Chen, X. Wang, M. Zhou, H. Scheer and K. H. Zhao, *Angew. Chem., Int. Ed.*, 2010, **49**, 5456–5458.
- J. Sambrook, E. Fritsch and T. Maniatis, *Molecular cloning: a laboratory manual*, Cold Spring Harbour Laboratory Press, New York, 1989.
- K. H. Zhao, J. Zhang, J. M. Tu, S. Böhm, M. Plöschner, L. Eichacker, C. Bubenzer, H. Scheer, X. Wang and M. Zhou, *J. Biol. Chem.*, 2007, **282**, 34093–34103.
- K. Tang, X. L. Zeng, Y. Yang, Z. B. Wang, X. J. Wu, M. Zhou, D. Noy, H. Scheer and K. H. Zhao, *Biochim. Biophys. Acta, Bioenerg.*, 2012, **1817**, 1030–1036.
- K. H. Zhao, P. Su, J. Li, J. M. Tu, M. Zhou, C. Bubenzer and H. Scheer, *J. Biol. Chem.*, 2006, **281**, 8573–8581.
- M. Bradford, *Anal. Biochem.*, 1976, **72**, 248–254.
- U. Laemmli, *Nature*, 1970, **227**, 680–685.
- T. Berkelman and J. C. Lagarias, *Anal. Biochem.*, 1986, **156**, 194–201.
- A. N. Glazer and S. Fang, *J. Biol. Chem.*, 1973, **248**, 659–662.
- A. N. Glazer and C. S. Hixson, *J. Biol. Chem.*, 1975, **250**, 5487–5495.
- A. N. Glazer and C. S. Hixson, *J. Biol. Chem.*, 1977, **252**, 32–42.
- J. E. Bishop, H. Rapoport, A. V. Klotz, C. F. Chan, A. N. Glazer, P. Füglistaller and H. Zuber, *J. Am. Chem. Soc.*, 1987, **109**, 875–881.
- Y. A. Cai, J. T. Murphy, G. J. Wedemayer and A. N. Glazer, *Anal. Biochem.*, 2001, **290**, 186–204.
- R. M. Alvey, A. Biswas, W. M. Schluchter and D. A. Bryant, *Biochemistry*, 2011, **50**, 4890–4902.
- G. Shen, N. A. Saunee, S. R. Williams, E. F. Gallo, W. M. Schluchter and D. A. Bryant, *J. Biol. Chem.*, 2006, **281**, 17768–17778.
- G. S. Filonov, K. D. Piatkevich, L. M. Ting, J. Zhang, K. Kim and V. V. Verkhusha, *Nat. Biotechnol.*, 2011, **29**, 757–761.
- X. Shu, A. Royant, M. Z. Lin, T. A. Aguilera, V. Lev-Ram, P. A. Steinbach and R. Y. Tsien, *Science*, 2009, **324**, 804–807.
- M. Kupka, J. Zhang, W. L. Fu, J. M. Tu, S. Böhm, P. Su, Y. Chen, M. Zhou, H. Scheer and K. H. Zhao, *J. Biol. Chem.*, 2009, **284**, 36405–36414.
- A. Biswas, M. N. Boutaghou, R. M. Alvey, C. M. Kronfel, R. B. Cole, D. A. Bryant and W. M. Schluchter, *J. Biol. Chem.*, 2011, **286**, 35509–35521.
- J. Wiethaus, A. W. Busch, K. Kock, L. I. Leichert, C. Herrmann and N. Frankenberg-Dinkel, *J. Biol. Chem.*, 2010, **285**, 37561–37569.