



Year: 2019

OCRL Deficiency Impairs Endolysosomal Function in a Humanized Mouse Model for Lowe Syndrome and Dent Disease

Festa, Beatrice Paola; Berquez, Marine; Gassama, Alkaly; Amrein, Irmgard; Ismail, Hesham M; Samardzija, Marijana; Staiano, Leopoldo; Luciani, Alessandro; Grimm, Christian; Nussbaum, Robert L; De Matteis, Maria Antonietta; Dorchies, Olivier M; Scapozza, Leonardo; Wolfer, David Paul; Devuyt, Olivier

Abstract: Mutations in OCRL encoding the inositol polyphosphate 5-phosphatase OCRL (Lowe oculocerebrorenal syndrome protein) disrupt phosphoinositide homeostasis along the endolysosomal pathway causing dysfunction of the cells lining the kidney proximal tubule. The dysfunction can be isolated (Dent disease 2) or associated with congenital cataracts, central hypotonia and intellectual disability (Lowe syndrome). The mechanistic understanding of Dent disease 2/Lowe syndrome remains scarce, due to limitations of animal models of OCRL deficiency. Here, we investigate the role of OCRL in Dent disease 2/Lowe syndrome by using *Ocr1Y*^{-/-} mice, where the lethal deletion of the paralogue *Inpp5b* was rescued by human *INPP5B* insertion, and primary culture of proximal tubule cells (mPTCs) derived from *Ocr1Y*^{-/-} kidneys. The *Ocr1Y*^{-/-} mice show muscular defects with dysfunctional locomotricity and present massive urinary losses of low-molecular-weight proteins and albumin, caused by selective impairment of receptor-mediated endocytosis in proximal tubule cells. The latter was due to accumulation of phosphatidylinositol 4,5-bisphosphate PI(4,5)P₂ in endolysosomes, driving local hyper-polymerization of F-actin and impairing trafficking of the endocytic LRP2 receptor, as evidenced in *Ocr1Y*^{-/-} mPTCs. The OCRL deficiency was also associated with a disruption of the lysosomal dynamic and proteolytic activity. Partial convergence of disease-mechanism and renal phenotypes observed in *Ocr1Y*^{-/-} and *Cln5*^{Y/-} mice suggest shared mechanisms in Dent disease 1 and 2. These studies substantiate the first mouse model of Lowe syndrome and give insights into the role of OCRL in cellular trafficking of multiligand receptors. These insights open new avenues for therapeutic interventions in Lowe syndrome and Dent disease.

DOI: <https://doi.org/10.1093/hmg/ddy449>

Posted at the Zurich Open Repository and Archive, University of Zurich

ZORA URL: <https://doi.org/10.5167/uzh-160732>

Journal Article

Accepted Version



The following work is licensed under a Creative Commons: Attribution 4.0 International (CC BY 4.0) License.

Originally published at:

Festa, Beatrice Paola; Berquez, Marine; Gassama, Alkaly; Amrein, Irmgard; Ismail, Hesham M; Samardzija, Marijana; Staiano, Leopoldo; Luciani, Alessandro; Grimm, Christian; Nussbaum, Robert L; De Matteis, Maria Antonietta; Dorchies, Olivier M; Scapozza, Leonardo; Wolfer, David Paul; Devuyst, Olivier (2019). OCRL Deficiency Impairs Endolysosomal Function in a Humanized Mouse Model for Lowe Syndrome and Dent Disease. *Human Molecular Genetics*, 28(12):1931-1946.
DOI: <https://doi.org/10.1093/hmg/ddy449>

2 **OCRL Deficiency Impairs Endolysosomal Function in a Humanized**
3 **Mouse Model for Lowe Syndrome and Dent Disease**

4
5 Beatrice Paola Festa^{1#}, Marine Berquez^{1#}, Alkaly Gassama¹, Irmgard Amrein^{2,3,4}, **Hesham M.**
6 **Ismail⁵**, Marijana Samardzija⁶, Leopoldo Staiano⁷, Alessandro Luciani¹, Christian
7 Grimm^{4,6,8}, Robert L. Nussbaum^{9,10}, Maria Antonietta De Matteis⁷, **Olivier M. Dorchies⁵**,
8 **Leonardo Scapozza⁵**, David Paul Wolfer^{2,3,4}, Olivier Devuyst^{1*}.

9 ¹Institute of Physiology, University of Zurich, CH-8057 Zurich, Switzerland; ²Division of
10 Functional Neuroanatomy, Institute of Anatomy, University of Zurich, CH-8057 Zurich,
11 Switzerland; ³Institute of Human Movement Sciences and Sport, Department of Health
12 Sciences and Technology, ETH Zurich, CH-8057 Zurich, Switzerland; ⁴Neuroscience Center
13 Zurich (ZNZ), University of Zurich, CH-8057 Zurich, Switzerland; ⁵**School of Pharmaceutical**
14 **Sciences, University of Geneva, CMU 5-6, Rue Michel-Servet 1, Geneva, 1211, Switzerland;**
15 ⁶Lab for Retinal Cell Biology, Department of Ophthalmology, University Hospital Zurich,
16 University of Zurich, CH-8057 Zurich, Switzerland; ⁷Telethon Institute of Genetics and
17 Medicine (TIGEM), 80078 Pozzuoli, Naples, Italy; ⁸Center for Integrative Human Physiology
18 (ZIHP), University of Zurich, CH-8057 Zurich, Switzerland;
19 ⁹Department of Medicine and Institute of Human Genetics, University of California, CA
20 94143-0794 San Francisco, California; ¹⁰Invitae Corporation, CA 94103 San Francisco.

21
22 **#These authors contributed equally to this work.**

23
24 *Correspondence: Prof. Dr. med. Olivier Devuyst (✉ Olivier.Devuyst@uzh.ch)
25 University of Zurich, Institute of Physiology, Winterthurerstrasse 190, 8057 Zurich,
26 Switzerland; Phone: +41 (0)44 635 50 82; Fax: +41 (0)44 635 68 14

27

The authors wish it to be known that, in their opinion, the first authors Beatrice Paola Festa and Marine Berquez should be regarded as joint First Authors

1 **Abstract**

2 Mutations in *OCRL* encoding the inositol polyphosphate 5-phosphatase OCRL (Lowe
3 oculocerebrorenal syndrome protein) disrupt phosphoinositide homeostasis along the
4 endolysosomal pathway causing dysfunction of the cells lining the kidney proximal tubule.
5 The dysfunction can be isolated (Dent disease 2) or associated with congenital cataracts,
6 central hypotonia and intellectual disability (Lowe syndrome). The mechanistic understanding
7 of Dent disease 2/Lowe syndrome remains scarce, due to limitations of animal models of
8 OCRL deficiency.

9 Here, we investigate the role of OCRL in Dent disease 2/Lowe syndrome by using *Ocrl*^{Y/-}
10 mice, where the lethal deletion of the paralogue *Inpp5b* was rescued by human *INPP5B*
11 insertion, and primary culture of proximal tubule cells (mPTCs) derived from *Ocrl*^{Y/-} kidneys.
12 The *Ocrl*^{Y/-} mice show **muscular defects** with dysfunctional locomotricity and present massive
13 urinary losses of low-molecular-weight proteins and albumin, caused by selective impairment
14 of receptor-mediated endocytosis in proximal tubule cells. The latter was due to accumulation
15 of phosphatidylinositol 4,5-bisphosphate PI(4,5)P₂ in endolysosomes, driving local hyper-
16 polymerization of F-actin and impairing trafficking of the endocytic LRP2 receptor, as
17 evidenced in *Ocrl*^{Y/-} mPTCs. The OCRL deficiency was also associated with a disruption of
18 the lysosomal dynamic and proteolytic activity. Partial convergence of disease-mechanism
19 and renal phenotypes observed in *Ocrl*^{Y/-} and *Clcn5*^{Y/-} mice suggest shared mechanisms in
20 Dent disease 1 and 2.

21 These studies substantiate the first mouse model of Lowe syndrome and give insights into the
22 role of OCRL in cellular trafficking of multiligand receptors. These insights open new
23 avenues for therapeutic interventions in Lowe syndrome and Dent disease.

24
25

1 INTRODUCTION

2 The maintenance of body fluid and electrolyte homeostasis critically depends on the
3 appropriate handling of solutes and water by the epithelial cells lining the proximal tubule
4 (PT) of the kidney (1, 2). These cells are characterized by an efficient endolysosomal pathway
5 involving the apical multiligand receptors megalin (LRP2) and cubilin (3). By processing
6 internalized cargos and recycling of receptors and transporters at the apical surface, the
7 endolysosomal system of the PT cells recover essential substances that are filtered through the
8 glomerulus, including a large variety of low-molecular-weight (LMW) proteins that would
9 otherwise be lost in the urine (2). Congenital and acquired disorders of the endolysosomal
10 pathway cause PT dysfunction (renal Fanconi syndrome) with massive urinary loss of solutes,
11 dehydration, electrolyte imbalance, rickets, growth retardation, and the development of
12 chronic kidney disease (CKD). Such PT dysfunctions are typically encountered in Dent
13 disease, a rare, X-linked disorder characterized by LMW proteinuria, renal Fanconi syndrome,
14 kidney stones, nephrocalcinosis and progressive renal failure (4, 5).

15 Dent disease is genetically heterogeneous. The majority of cases (approx. 60%) is due
16 to mutations in the *CLCN5* gene that encodes the electrogenic Cl^-/H^+ exchanger ClC-5 (Dent
17 disease 1, MIM # 300009) (6). In a subset of patients (~15-20%), the disease is caused by
18 mutations in *OCRL*, the gene encoding the type II phosphatidylinositol (PI) bisphosphate 5-
19 phosphatase OCRL (Dent disease 2, MIM #300555). Mutations in OCRL are also associated
20 with the oculocerebrorenal syndrome of Lowe (MIM # 309000), which includes systemic
21 manifestations such as congenital cataracts, cognitive disability and hypotonia (4, 7). OCRL
22 is a protein of 110 kDa which, in addition to the 5-phosphatase catalytic domain, comprises:
23 (i) a pleckstrin homology (PH) domain containing a clathrin-binding site (8); (ii) an ASPM,
24 SPD-2, Hydin (ASH) domain, characteristic of protein that localizes to centrosome and
25 primary cilia (9); and (iii) a RhoGAP-like domain, which mediates interactions involved in

1 cytoskeleton dynamics and progression of cell cycle (10). Almost all the mutations associated
2 with Lowe syndrome occur in exons 8-23 which include the 5-phosphatase catalytic domain,
3 the ASH domain and the RhoGAP-like domain. Conversely, the majority of mutations that
4 cause Dent disease 2 are positioned in exons 1-7 which comprise the PH domain (11).
5 Although mutations in the catalytic domain of *OCRL* have been described in both clinical
6 profiles, the mutations in Dent disease 2 are always missense - compatible with a residual
7 biological activity that could explain a less severe cellular phenotype (7).

8 The convergence of clinical phenotypes among patients with mutations in *OCRL* and
9 *CLCN5* raises the questions whether these genes products are part of the same pathways and
10 how they cause dysfunction of endolysosomes in PT cells. *CIC-5* is predominantly expressed
11 in the early endosomes of PT cells of the kidney, potentially involved in their maturation
12 towards the degradative compartments or the recycling route (6). Studies in mouse models
13 showed that the functional loss of *CIC-5* generates a trafficking defect involving megalin and
14 cubilin, reflected by defective endocytosis and manifestations of PT dysfunction (6, 12).
15 *OCRL* is located at different stations of the endo-lysosomal pathway where it maintains the
16 cellular metabolism of phosphatidylinositol 4, 5-bisphosphate $PI(4,5)P_2$, an essential
17 regulator of membrane trafficking. Increased $PI(4,5)P_2$ levels and marked vesicular trafficking
18 defects affecting the endocytic network have been observed in cells lacking *OCRL*, resulting
19 in defective receptor-mediated endocytosis (13).

20 The direct impact of *OCRL* on transport events leading to renal Fanconi syndrome
21 cannot be reliably assessed on dedifferentiated cell systems including non-kidney or non-
22 epithelial cell types, or clonal cells isolated from urine (14). Renal biopsy material, usually
23 obtained at an advanced disease stage, is of limited value. Furthermore, limitations of animal
24 models of *OCRL* deficiency impede the development of translational studies. The first *Ocrl*
25 KO mouse showed no kidney, eye or brain defects (15), due to a compensation by *INPP5B*,

1 the closest paralogue of OCRL in mice and humans (16). Accordingly, a generalized
2 endocytic defect (affecting both receptor-mediated and fluid-phase endocytosis) was detected
3 in a conditional tubular deletion of *Ocrl* and *Inpp5b* mouse model (17). However, studies
4 performed in this strain do not allow to discriminate the individual role of OCRL and INPP5B
5 in the pathophysiology of Dent disease.

6 Recently a mouse model expressing human INPP5B in *Ocrl^{Y/-}; Inpp5b^{-/-}* background
7 was generated (18). The replacement of mouse *Inpp5b* with human *INPP5B* in the whole
8 body of *Ocrl^{Y/-}* mouse provides a humanized background, which therefore allows to
9 investigate the consequences related to the specific loss of OCRL activity. Preliminary studies
10 revealed PT dysfunction in this line (18), with no investigation of the time-course, multi-
11 systemic aspect, and cellular basis of this defect. Here, we analyzed in detail the multi-
12 systemic phenotype of these *Ocrl^{Y/-}; Inpp5b^{-/-}; BAC-INPP5B* mouse model; compared the
13 kidney dysfunction to that of *Cln5* KO mice; and investigated the mechanisms underpinning
14 epithelial transport defects in Lowe syndrome.

1 RESULTS

2 *Ocrl*^{Y/-} mice show early manifestations of proximal tubule dysfunction

3 A humanized mouse model for Lowe syndrome/Dent disease 2 was generated by targeted
4 disruption of both *Ocrl* and *Inpp5b* and oocyte injection of a bacterial artificial chromosome
5 (BAC) containing the human gene *INPP5B* to avoid embryonic lethality (18). The mouse
6 littermates lacking *Inpp5b* while harbouring *BAC-INPP5B* expression with *Ocrl* are referred
7 to as *Ocrl*^{Y/+} (*Ocrl*^{Y/+}; *Inpp5b*^{-/-}; *BAC-INPP5B*) whereas those lacking *Ocrl* are *Ocrl*^{Y/-} (*Ocrl*^{Y/-};
8 *Inpp5b*^{-/-}; *BAC-INPP5B*) mice, respectively. All mice were born at mendelian ratio and were
9 viable and fertile. The genotype of *Ocrl* mice was demonstrated by genomic DNA analyses of
10 *Ocrl*, *Inpp5b* and *BAC-INPP5B* (Suppl. Fig. 1A) and immunoblotting for OCRL (Suppl. Fig.
11 1B) in kidney samples derived from *Ocrl*^{Y/-} and *Ocrl*^{Y/+} mice.

12 We first used the *Ocrl* mice to characterize the kidney phenotype over time. Growth
13 retardation was observed in *Ocrl*^{Y/-} mice starting from 16 weeks of age onwards (Fig. 1A),
14 whereas manifestations of PT dysfunction appeared in *Ocrl*^{Y/-} mice from 8 weeks of age, with
15 albuminuria (Figs. 1B and 1C) and LMW proteinuria (Figs. 1D and 1E). The inappropriate
16 loss of the LMW clara cell secretory protein 16 (CC16) in the urine of *Ocrl*^{Y/-} mice was
17 observed at all time points analyzed (Fig. 1D). Western blotting of the urine confirmed the
18 major loss of transferrin (TFR) and vitamin D binding protein (VDBP) along CC16 in the
19 urine of *Ocrl*^{Y/-} mice (Fig. 1E). The *Ocrl*^{Y/-} mice did not show manifestations of renal failure,
20 and no polyuria, calciuria, glycosuria and phosphaturia during the timeframe of investigation,
21 suggesting a partial renal Fanconi syndrome (Table 1). **The expression levels of *BAC-INPP5B***
22 **were not associated with variable levels of PT dysfunction in *Ocrl*^{Y/-} mice (Suppl. Figs. 1C-F).**
23 Since mutations in *CLCN5* and *OCRL* produce similar kidney defects in human patients, we
24 compared the severity of PT dysfunction in the *Clcn5*^{Y/-} and *Ocrl*^{Y/-} mouse models. The *Ocrl*^{Y/-}
25 mice display a milder LMW proteinuria (CC16) than that observed in *Clcn5*^{Y/-} mice (Fig. 1F).

1 This difference is most likely reflecting specific roles of CIC-5 and OCRL along the endo-
2 lysosomal pathway.

3

4 *Ocrl^{Y/-} mice show a specific defect in receptor-mediated endocytosis*

5 To determine the mechanism of LMW proteinuria, we followed the *in vivo* uptake of the
6 LMW protein Cy5-labelled β -lactoglobulin in the kidneys of *Ocrl^{Y/-}* mice compared to their
7 control littermates. Fifteen minutes after injection, a substantial accumulation of
8 fluorescent vesicles was observed in the brush border of PT cells of the *Ocrl^{Y/+}* mice,
9 contrasting with a considerable reduction of the signal in PT cells from *Ocrl^{Y/-}* mice (Fig.
10 2A). A similar defective uptake in Cy5-labelled β -lactoglobulin was observed in *Cln5^{Y/-}*
11 tubules (Fig. 2B). By contrast, the internalization of Alexa 647-dextran, a marker of fluid
12 phase endocytosis, was unaltered in *Ocrl^{Y/-}* mice (Fig. 2C), suggesting that loss of OCRL
13 function impacts specifically on receptor-mediated endocytosis. To substantiate this
14 observation, we investigated the LRP2 receptor and found its expression dramatically
15 decreased in PT cells of the *Ocrl^{Y/-}* kidneys whereas its mRNA level was unchanged (Figs.
16 2D-F). In line with absent phosphaturia and glycosuria, no modifications in the sodium-
17 phosphate cotransporter IIa (NaPi-IIa), the sodium-glucose cotransporter 2 (SGLT2) or other
18 PT components were observed in *Ocrl^{Y/-}* kidneys (Figs. 2E and 2F).

19 These data reveal that a defective receptor-mediated endocytosis, caused by a decreased
20 **protein level of LRP2**, characterizes *Ocrl^{Y/-}* mice, similar to *Cln5^{Y/-}* mice. The renal
21 Fanconi syndrome is restricted to LMW proteinuria in *Ocrl^{Y/-}* mice, contrasting with a
22 more severe PT dysfunction in *Cln5^{Y/-}* mice. **At age 8 weeks, the latter showed a**
23 **decreased expression of SGLT2 and NaPi-IIa (Suppl. Fig. 2A), explaining glycosuria and**
24 **phosphaturia along polyuria and calciuria (Table 1; Suppl. Figs. 2C-D), and a defective**
25 **uptake of fluid-phase endocytosis (dextran) markers (Suppl. Fig. 2B).**

1 ***Loss of OCRL increases PI(4,5)P₂ and disrupts receptor-mediated endocytosis in vitro***

2 In order to further analyse the endocytic defect observed *in vivo*, we developed primary
3 cultures of PT cells (mPTC) from micro-dissected PT segments of *Ocrl*^{Y/-} mice aged 8 weeks.
4 This cell culture system preserves the differentiation and polarized transport processes and
5 therefore represents a relevant *in vitro* model to investigate mechanisms underlying PT
6 disorders (19). To validate the *Ocrl* cellular system, we evaluated whether the loss of OCRL
7 in mPTC reproduced the typical endosomal accumulation of PI(4,5)P₂ observed in Lowe
8 syndrome/Dent disease2 (20). **Compared to control, *Ocrl*^{Y/-} mPTCs exhibited a remarkable
9 increase of PI(4,5)P₂ in early endosomal structures, as shown by colocalization with the early
10 endosome marker EEA1 (Figs. 3A-B).** The unchanged PI3P levels, the PI hallmark of the
11 endosomal system, demonstrated that OCRL disruption in mPTCs exclusively targets the
12 homeostasis of PI(4,5)P₂ (Suppl. Fig. 3A). These results, which are consistent with PI(4,5)P₂
13 accumulation observed in a transgenic zebrafish model of Lowe syndrome or in OCRL-
14 depleted immortalized cells, substantiate the reliability of *Ocrl* mPTCs system (13, 21).
15 Given that the tight regulation of PI(4,5)P₂ homeostasis is fundamental for a proper endocytic
16 trafficking, we asked whether its increase at the early endosomes might impair the endocytic
17 function of mPTCs. Functional studies demonstrated that albumin uptake was markedly
18 reduced in *Ocrl*^{Y/-} (-84%) when compared to control mPTCs (Fig. 3C). A similar disruption of
19 the endocytic capacity was observed in *Clc5*^{Y/-} mPTCs (Fig. 3D). Confirming the observations
20 made *in vivo*, fluid phase endocytosis was unaltered in *Ocrl*^{Y/-} mPTCs (Fig. 3E), highlighting
21 the specificity of the defect in receptor-mediated endocytosis.

23 ***OCRL deficiency perturbs expression of LRP2 through aberrant F-actin polymerization***

24 We next examined whether the defective uptake capacity of *Ocrl*^{Y/-} mPTCs was reflected by
25 alterations of the endogenous LRP2 expression. LRP2 protein level was reduced in the total

1 lysates of mPTCs lacking OCRL ([Fig. 4A](#)), similarly to *Clcn5^{Y/-}* mPTCs ([Suppl. Fig. 4A](#)).

2 This reduction was confirmed by the analysis of the confocal Z-stack images, evidencing a

3 decreased LRP2 fluorescent signal in each focal plane throughout the entire volume of *Ocrl^{Y/-}*

4 mPTCs ([Fig. 4B and Suppl. Fig. 4B](#)). The latter analysis showed a shift of LRP2 signal from

5 the apical plasma membrane towards a more intracellular compartment in *Ocrl^{Y/-}* mPTCs,

6 whose polarization is defined by the typical apical (wheat germ agglutinin, WGA) and

7 basolateral (Na^+ , K^+ -ATPase) markers ([Fig. 4C and Suppl. Fig. 4C](#)). This result was

8 corroborated by a striking decrease of LRP2 level in the plasma membrane fraction of *Ocrl^{Y/-}*

9 mPTCs ([Fig. 4D](#)). These changes were not associated with LRP2 transcriptional

10 modifications or alterations of other PT receptors or transporters ([Suppl. Fig. 3B](#)).

11 The intracellular localization of LRP2 in *Ocrl^{Y/-}* mPTCs prompted us to examine its

12 organelles compartmentalization. OCRL is known to modulate the trafficking of endocytic

13 receptors by orchestrating the recycling of endosomal vesicles to the surface (13). Thus, lack

14 of OCRL function might disrupt the return of the endocytic receptors to the apical membrane,

15 leading to their accumulation in endosomal structures. Imaging studies confirmed LRP2

16 increase within EEA1⁺ early endosomes in *Ocrl^{Y/-}* mPTCs, suggesting that loss of OCRL

17 function impacts on both expression and distribution of this endocytic scavenger ([Fig. 4E](#)).

18 As PI(4,5)P₂ promote the recruitment of the actin nucleating machinery, we asked whether

19 their endosomal accumulation, observed in *Ocrl^{Y/-}* mPTCs, might locally induce an aberrant

20 actin polymerization and, in turn, affect the trafficking of endocytic receptors (22). We

21 observed that, in *Ocrl^{Y/-}* mPTCs, the levels of actin stress fibres decreased and foci of

22 filamentous actin (F-actin) accumulated on internal membranes ruffles ([Suppl. Fig. 4D](#)).

1 Compared to controls, an increase of F-actin structures, colocalizing with EEA1, was
2 observed in *Ocrl*^{Y/-} mPTCs (Suppl. Fig. 4E). This uncontrolled actin dynamics might impede
3 the entrance of the endosomes in the recycling route and coerce LRP2 to stick inside them.
4 Supporting this hypothesis, a considerable amount of LRP2 vesicles were coalescent with F-
5 actin membranes (Fig. 4F). Furthermore, by high magnification confocal microscopy, it was
6 possible to visualize the formation of F-actin basket-like structure surrounding LRP2 (Suppl.
7 Fig. 4F). These data indicate that the increased association of F-actin with early endosomes
8 may affect the endocytic trafficking and prevent the recycling of LRP2 to the apical surface.
9 **In order to substantiate the role of OCRL in maintaining the recycling activity, we**
10 **investigated the localization of the canonical recycling marker transferrin receptor (TfR),**
11 **which crosses the same endocytic stations traveled by LRP2 (plasma membrane - early**
12 **endosomes/recycling endosomes) (23). Our data showing the redistribution of TfR from the**
13 **plasma membrane to enlarged cytoplasmic structures, which also trap LRP2, provide another**
14 **evidence of defective endocytic recycling in *Ocrl*^{Y/-} mPTCs (Suppl. Fig. 5A and Fig. 4G).**
15 **We also tested whether the lack of OCRL might affect the trafficking of the cation-**
16 **independent mannose 6-phosphate receptor (CI-MPR), which is required for the transport of**
17 **lysosomal enzymes and travels through intracellular itineraries diverging from those exploited**
18 **by LRP2 (trans golgi network-late endosomes- plasma membrane) (24). An increase in the**
19 **CI-MPR associated with peripheral structures and a decrease in the perinuclear pool was**
20 **observed in the kidneys and mPTCs from *Ocrl*^{Y/-} mice compared to controls (Suppl. Figs. 5B-
21 C), indicating a defective retrograde transport of CI-MPR from the endosomes to the Golgi.**
22 **All together, these data suggest that the actin-trapping mechanism impairing the recycling of**
23 **LRP2 extends to other receptors traveling through the endosomal structures of *Ocrl*^{Y/-} mice,**
24 **highly relevant for the molecular basis of Lowe syndrome.**

25

1 ***OCRL depletion alters lysosomal dynamics and function***

2 It has been recently shown that, under lysosomal overload conditions, OCRL translocates on
3 the lysosomal membrane, where it ensures adequate levels of PI(4,5)P₂ necessary for fusion
4 and subsequent degradation of cargo vesicles (25). We thus explored whether loss of OCRL
5 function might generate a rearrangement of PI(4,5)P₂ at the lysosomal membrane and,
6 consequently, affect lysosomal morphology. Confocal microscopy analysis showed that *Ocrl*
7 deletion increased the number of PI(4,5)P₂ positive structures colocalized with LAMP1-
8 labeled lysosomes (Fig. 5A). These changes were associated with dramatic modifications in
9 the dynamics of lysosomes as evidenced by their abnormal increase in number and size (Fig.
10 5B). As changes in lysosomal dynamics could affect their proteolytic activity, we examined
11 whether OCRL disruption impairs the lysosomal cargo degradation in *Ocrl*^{Y/-} mPTCs. To this
12 end we used dequenched BSA (BSA-DQ) reagent, which is readily incorporated by cells via
13 fluid-phase endocytosis. Upon fusion with endo-lysosomes, BSA-DQ is digested into smaller
14 fragments, thereby relieving its self-quenching properties and causing a fluorescent signal that
15 reflects lysosomal degradative capacity (26). *Ocrl*^{Y/-} mPTCs showed a remarkable decrease in
16 BSA-DQ fluorescent puncta colocalized with LAMP1 (Fig. 5C), indicating a specific
17 impairment of lysosomal proteolysis as fluid phase endocytosis was not affected by the loss of
18 OCRL. To substantiate the defective lysosomal activity, we tested the processing of the
19 epidermal growth factor receptor (EGFR), an endogenous protein which, upon EGF induced
20 internalisation, is normally sorted to endo-lysosomal proteolytic pathway for degradation
21 (27). Control mPTCs, 90 min after EGF stimulation, showed an efficient degradation of
22 EGFR. On the contrary, at the same time frame, the levels of EGFR remained high in *Ocrl*^{Y/-}
23 mPTCs, suggesting a delayed lysosomal processing of the receptor (Fig. 5D).

1 One mechanism by which cargo clearance might be impeded is a defective maturation of
2 lysosomal cathepsins. Western blot analyses of Cathepsin D (Cts-D) showed a decreased
3 generation of the 32kDa mature Cts-D in *Ocrl*^{Y/-} mPTCs compared to control (Fig. 5E). We
4 next tested the lysosomal Cts-D activity by incubating the cell with Bodipy-FL-PepstatinA
5 (PepA), a fluorescence-tagged PepA that binds to the active site of Cts-D in acidic lysosomes.
6 Although the majority of lysosomes were co-stained with PepA in control mPTCs, the
7 number of PepA-labeled vesicles colocalizing with LAMP1 were substantially lower in
8 *Ocrl*^{Y/-} mPTCs (Fig. 5F). Similarly, the lysosome-based processing of the LMW β -
9 lactoglobulin, which is normally internalized and degraded by endolysosomes, was
10 dramatically reduced in *Ocrl*^{Y/-} proximal tubules compared to wild-type (Fig. 5G).

11 **To investigate whether mis-sorting of lysosomal hydrolases in the extracellular space might**
12 **contribute to the aberrant lysosomal proteolysis observed in *Ocrl*^{Y/-} mice, we tested for and**
13 **detected significantly increased levels of the lysosomal protease Cts-D (immature form) in the**
14 **plasma of these mice (Suppl. Fig. 6A). This result was in line with the mis-trafficking of CI-**
15 **MPR at the cell periphery and with previous studies performed in patients with Lowe**
16 **syndrome (13). Collectively these data indicate that OCRL is important to maintain lysosome**
17 **homeostasis, itself crucial for PT function. Of note, impaired lysosomal proteolysis and**
18 **insufficient degradation of β -lactoglobulin was also observed in *Cln5*^{Y/-} proximal tubules**
19 **(Suppl. Figs. 6B-D) indicating that OCRL and CIC-5 are part of the same cellular pathways.**

21 ***The *Ocrl*^{Y/-} mice show dysfunctional locomotricity associated with muscular defects***

22 In order to test whether the deletion of OCRL in this model was reflected by extra-renal
23 manifestations, we performed comprehensive behavioral tests of *Ocrl* mice to examine basic
24 motor activity, learning and memory skills, social behaviour and vision.

1 To identify disturbances in locomotor activity, we evaluated the general mobility of the mice
2 by challenging them with the open field large arena test, which has been extensively used for
3 analyzing the locomotor defects exhibited by Parkinson and Huntington mouse models (28,
4 29). While velocity was comparable between genotypes (data not shown), *Ocr1*^{Y/-} mice
5 exhibited an overall decreased locomotor activity, as scored by the measurement of their
6 trajectories (Figs. 6A and 6B). The *Ocr1*^{Y/-} mice presented more resting episodes than controls,
7 as well as fewer lingering and walking events during the test (Fig. 6C). Of note, center-field
8 avoidance was robust and equal in both genotypes (data not shown), suggesting that the
9 impaired motor activity in *Ocr1*^{Y/-} mice was more likely driven by a muscular defect rather
10 than an abnormal anxiety-related response.

11 To test the latter hypothesis, we pursued mice analyses in IntelliCage, an automated system,
12 which allowed the evaluation of the spontaneous behaviour of the animals (30). During free
13 adaptation phase, *Ocr1*^{Y/-} mice made fewer corner visits compared to controls, confirming the
14 reduced locomotor and exploratory activity shown in the test above (data not shown).

15 However, *Ocr1*^{Y/-} mice showed an incompetent licking pattern, which became more evident
16 during the drinking restriction protocol and was associated with slower progress of water
17 intake during drinking sessions (Fig. 6D). We excluded an influence of the kidney defect on
18 the licking pattern as similar water intake was detected between genotypes (Suppl. Fig. 7A).
19 Thus, the impaired licking of *Ocr1*^{Y/-} mice was most likely caused by a global muscular
20 dysfunction, which affected also the oro-lingual motor apparatus.

21 To explore whether the defective locomotricity evidenced in *Ocr1*^{Y/-} mice was driven by
22 muscular defects, we used whole body composition analysis (EchoMRI) to evidence a
23 striking decrease in lean mass/body weight ratio in *Ocr1*^{Y/-} mice compared to controls (Fig.
24 6E), with a global reduction of the mass of several hind limb (gastrocnemius, triceps surae,
25 plantaris, tibialis posterior/anterior and quadriceps) muscles relative to body weight (Fig. 6F)
26 demonstrating skeletal muscle atrophy. These changes were paralleled by a strong increase in

1 plasma creatine kinase (CK) activity, suggesting membrane fragility of striated muscles. (Fig.
2 6G). These events, which are in line with the muscle hypotonia observed in Lowe Syndrome
3 patients (7), support the motor defect detected in *Ocr1^{Y/-}* mice.

4 To assess the cognitive function of *Ocr1* mice we applied IntelliCage standard protocol which
5 investigated the hippocampus-dependent spatial learning ability of the animals. No sign of
6 dysfunctional learning was observed in OCRL deficient mice, even during the most
7 challenging chaining task (data not shown). Aggressive behavior reported in patients with
8 Lowe syndrome was also not reflected in *Ocr1^{Y/-}* mice, which showed intact sociability (Suppl.
9 Fig. 7B). Given that congenital cataract and glaucoma are hallmarks of Lowe syndrome, we
10 also examined the visuospatial and visuoperceptual ability of *Ocr1* mice. During water maze
11 cue navigation, *Ocr1^{Y/-}* mice exhibited a robust learning without evidences for an inadequate
12 vision (Suppl. Fig. 7C). In addition no noticeable differences were observed in lens
13 epithelium and in retinal morphology between control and *Ocr1^{Y/-}* mice. Irrespective of the
14 *Ocr1* genotype, an impairment of retinal photoreceptor layer was observed in mice harboring
15 *rd8* (retinal degeneration 8) mutation in *Crb1* gene, a spontaneous mutation associated with
16 C57BL/6N genetic background, leading to photoreceptor rosette-like structures when
17 expressed homozygously (*rd8/rd8*). (Suppl. Figs.7D and 7E) (31).

18
19

1 DISCUSSION

2 In these studies we present the first OCRL-deficient mouse model that associates renal and
3 extra-renal manifestations encountered in patients with Lowe syndrome. The absence of
4 OCRL in kidney proximal tubule triggers endolysosomal defects and epithelial dysfunction,
5 with a consistent LMW proteinuria reflecting defective receptor-mediated endocytosis due to
6 decreased expression of LRP2 endocytic receptor, in absence of renal failure. We also
7 evidence a partial convergence of disease-mechanism and kidney tubular phenotype between
8 mouse models deficient in CIC-5 (Dent disease 1) and OCRL (Lowe syndrome/Dent disease
9 2). These results provide insights into the mechanisms of endocytosis and the
10 pathophysiology of Dent disease/Lowe syndrome.

11 In contrast with a previous kidney tubular conditional *Ocrl* and *Inpp5b* KO mouse
12 model, where the phenotype reflects the combined loss of OCRL and INPP5B (17), the
13 genetic architecture of the mouse line investigated here allows to directly address
14 dysfunctions related to the single loss of OCRL activity (18). **The reinsertion of human**
15 **INPP5B in the *Ocrl*^{-/-}; *Inpp5b*^{-/-} background, irrespective of its level of expression, was**
16 **fundamental for survival but it was not compensating for the renal defect.** This observation is
17 in line with studies on cells derived from patients with Lowe syndrome, which exhibit
18 INPP5B-independent phenotypic variability (32). **Although the renal defect was observed in**
19 **all the *Ocrl*^{Y/-} mice analysed, a noticeable spread was observed comparing individual animals.**
20 **This individual variability was not due to different levels of INPP5B expression. The**
21 **possibility that compensatory changes in kinases or phosphatases crossing the same metabolic**
22 **pathway than OCRL may contribute to such variability should be further investigated.**

23 The differences between the conditional double *Ocrl* and *Inpp5b* KO and the
24 humanized transgenic *Ocrl*^{Y/-} mice studied here are evident when comparing the defective
25 tubular endocytic phenotypes. The conditional deletion of OCRL and INPP5B resulted in an
26 unspecific impairment of the clathrin-dependent and clathrin-independent endocytosis. By

1 contrast, the single lack of OCRL in *Ocrl*^{Y/-} transgenic mice resulted in a selective dysfunction
2 of the clathrin receptor-mediated endocytosis, as evidenced by the defective uptake of β -
3 lactoglobulin and the unaffected internalization of the fluid-phase marker dextran. These
4 differences are in line with the function of OCRL in regulating the membrane trafficking of
5 clathrin coated vesicles (33).

6 Defective receptor-mediated endocytosis was reflected in *Ocrl*^{Y/-} mice by a consistent
7 LMW proteinuria, occurring early, in absence of renal failure. In contrast, the *Ocrl*^{Y/-} mice did
8 not show glycosuria, phosphaturia and calciuria, even at old age, mimicking the partial renal
9 Fanconi syndrome typically present in the majority of patients carrying mutations in OCRL
10 (7, 34). The *Clcn5*^{Y/-} mice showed a similar defect in receptor-mediated endocytosis, causing
11 a severe LMW proteinuria. The *Clcn5*^{Y/-} mice also showed a defective uptake of fluid phase
12 endocytosis markers, in line with previous data from mouse models and patient-derived cells
13 (35-37) but not with others (12). The presence of a more complete form of renal Fanconi
14 syndrome in the *Clcn5*^{Y/-} mouse model was evidenced by the hypercalciuria, phosphaturia and
15 glucosuria detected at 8 weeks, paralleled by a decreased expression of SGLT2 and NaPi-IIa
16 in addition to LRP2.

17 Filtered LMW proteins are reabsorbed through megalin /LRP2 and cubilin endocytic
18 receptors expressed at the apical membrane of PT cells. This reabsorptive function is
19 maintained by the degradative and recycling activity of the endolysosomal system, as
20 evidenced by severe defects in tubular homeostasis associated with endolysosomal disorders
21 (1, 2). Our investigations characterize the involvement of LRP2 in the pathogenesis of Lowe
22 syndrome, and demonstrate analogies with the endocytic defect associated with the loss of
23 CIC-5 in Dent disease1/*Clcn5*^{Y/-} mouse model (12). Previous studies, relying on OCRL-
24 deficient immortalized cells expressing LRP2 mini-receptor, showed a redistribution of LRP2
25 from the apical membrane to the intracellular compartments rather than a defective expression
26 (13). Here, analyses on kidney tissues reveal a remarkable decrease of LRP2 protein in the

1 proximal tubule from *Ocrl*^{Y/-} mice, similar to that observed in *Clcn5*^{Y/-} mice. These findings
2 are in line with observations made in zebrafish pronephros, demonstrating the evolutionary
3 conservation of the role of OCRL in endocytosis (21). The identification of converging
4 kidney phenotypes in mouse models for Lowe syndrome and Dent disease supports the view
5 that the endosomal exchanger CIC-5 and the 5-phosphatase OCRL impact on common
6 pathways operating in kidney tubular cells. In absence of transcriptional changes, **the**
7 **mechanism by which the loss of CIC-5 or OCRL might affect LRP2 protein levels remains to**
8 **be clarified. First, the decrease of apical LRP2 may reflect an increased shedding of the**
9 **receptor in the urine in response to the endolysosomal engorgement observed in *Ocrl*^{Y/-} mice.**
10 **Previous studies showed that LRP2 is a substrate for metalloproteases and is constitutively**
11 **subjected to ectodomain shedding (38). This event produces LRP2 membrane-associated**
12 **fragments, which in turn form the substrate for γ -secretase, the main player of regulated**
13 **intramembrane proteolysis. Preliminary data showing a higher abundance of LRP2 fragments**
14 **in *Ocrl*^{Y/-} urine, together with a transcriptional increase of all subunits composing the γ -**
15 **secretase (39) are in line with this hypothesis (data not shown). Alternatively, the loss of**
16 **LRP2 could be explained by an increased urinary excretion of (full length) LRP2-containing**
17 **exosomes. A third mechanism might be an aberrant degradation of LRP2, mediated by the**
18 **proteasome in response to altered lysosomal proteolysis (see below). Further studies of post-**
19 **translational modifications potentially triggering LRP2 to the proteasome are necessary to test**
20 **this hypothesis (40).**

21 By establishing differentiated and polarized proximal tubular cell cultures (mPTCs)
22 directly derived from *Ocrl*^{Y/-} mouse kidneys (19), we were able to reconstitute critical aspects
23 of the disease *in vitro*. The *Ocrl*^{Y/-} mPTCs recapitulate the selective impairment of receptor-
24 mediated endocytosis and the ectopic accumulation of PI(4,5)P₂ in early endosomes (20). The
25 latter is due to the loss of 5-phosphatase activity of OCRL that regulates the transition from
26 high (plasma membrane) to low (early endosomes) levels of PI(4,5)P₂ in clathrin coated

1 vesicles, enabling progression of the cargo/receptor along the endocytic pathway (33, 41).
2 The PI(4,5)P₂ dynamic is critical for actin assembly at the plasma membrane ruffles and early
3 endosomes, hence, for the regulation of membrane trafficking (42, 43). Accordingly, the
4 endosomal accumulation of PI(4,5)P₂ in *Ocrl*^{Y/-} mPTCs triggers an aberrant F-actin
5 polymerization, which impairs the recycling of residual LRP2, thus impeding the endocytic
6 uptake. **The actin-trapping mechanism impairing LRP2 recycling might be extended to other**
7 **receptors, as evidenced by the redistribution of the canonical recycling marker TfR in *Ocrl*^{Y/-}**
8 **mPTCs. These defects in receptor recycling represent an appealing druggable target for**
9 **rescuing the epithelial dysfunction associated with the disease.**

10 It has been shown recently that OCRL can translocate to the lysosome under cargo
11 overload conditions, where its fine regulation of PI(4,5)P₂ balance is instrumental for
12 maintaining lysosomal function (25). Here, we demonstrate that lack of OCRL induces an
13 abnormal lysosomal accumulation of PI(4,5)P₂ leading to altered lysosomal dynamics and
14 defective lysosomal function, as scored by decreased expression and activity of lysosomal
15 cathepsin D and impaired processing of lysosomal substrates in *Ocrl*^{Y/-} kidney and mPTCs.
16 These results, which are consistent with previous observations on biopsies derived from Lowe
17 patients (25), raise the issue of the mechanisms responsible for lysosomal dysfunction
18 associated with loss of OCRL. **The peripheral mislocalization of the CI-MPR, a protein**
19 **regulating the transport of lysosomal hydrolases from the Golgi to lysosomes, along with**
20 **increased levels of lysosomal protease Cathepsin D (immature form) in the plasma, indicates**
21 **that misrouting of lysosomal enzymes could be involved. This finding is in line with previous**
22 **studies performed in Lowe syndrome patients** (13). Alternatively, the lysosomal engulfment
23 of PI(4,5)P₂ driven by the loss of OCRL may somehow alter the vacuolar-type H⁺-ATPase
24 (V-ATPase) complex, thereby impairing lysosome acidification and activation of cathepsins.
25 It should be noted that similar defects in receptor-mediated endocytosis and lysosomal
26 dynamic and activity are observed in mouse and cellular models deficient for the endosomal

1 CIC-5 or lysosomal cystinosin (CTNS) transporters, highlighting the role of the endolysosome
2 network as crucial signaling hub to ensure epithelial homeostasis (44).

3 Studies on the locomotor, neurological and vision abnormalities detected in patients
4 with Lowe syndrome have been hindered by the limitations of available mouse models. Deep
5 phenotyping analyses unveiled a defective locomotricity in *Ocrl*^{Y/-} mice, which reflects a
6 global impairment of the muscular apparatus, as indicated by the increased plasma activity of
7 protein creatine kinase and atrophy of several hind limb muscles. This phenotype was
8 reminiscent of the muscle hypotonia associated with Lowe syndrome and therefore highly
9 relevant (45). Whether this defective muscular/motor pattern originates from a primary
10 myopathy or is rather a consequence of neurological alterations and how OCRL contributes in
11 maintaining muscular tone remains to be further investigated. Behavior, learning-memory
12 function and vision were not altered in *Ocrl*^{Y/-} mice. The discrepant clinical manifestations in
13 mice and humans could be partly explained by differences in tissue-specific expression of
14 enzymes with overlapping functions or by specific roles of OCRL in the tissues affected by
15 the disease (46, 47).

16 Collectively, these studies validate the first mouse model of Lowe syndrome and give
17 insights into the role of OCRL in cellular trafficking of multiligand receptors. Partial
18 convergence of disease-mechanism and renal phenotypes observed in *Ocrl*^{Y/-} and *Cln5*^{Y/-}
19 mice suggest shared mechanisms in Dent disease 1 and 2. These insights open new avenues
20 for therapeutic interventions in Lowe syndrome and Dent disease.

21

1 MATERIALS AND METHODS

2 **Antibodies and reagents.** The following antibodies were used: rabbit anti-human transferrin
3 (A0061, Dako); rabbit anti-human Gc-globulin (also known as VDBP, A0021, Dako); rabbit
4 anti-uteroglobin (also known as CC16, ab40873, Abcam); rabbit anti-SLC1A5 (also known as
5 SGLT2, ab84903, Abcam); rabbit NaPi-IIa (gift from C.A.Wagner, University of Zurich,
6 Zurich, Switzerland); rabbit anti-human AQP1 (ab2219, Millipore); mouse anti- β -actin
7 (A2228, Sigma-Aldrich); mouse conjugated to Fluorescein (FITC) anti-PI(4,5)P₂ (Z-G045,
8 Echelon Biosciences Inc.); mouse anti-EEA1 (610456, BD Bioscience); rabbit anti-RFP (600-
9 401-379, ROCKLAND); sheep anti-LRP2 (gift from P. Verroust and R. Kozyraki, INSERM,
10 Paris, France); mouse anti Flotillin-1(610821, BD Bioscience); mouse anti- α -tubulin (T5168,
11 Sigma-Aldrich); rabbit anti-GAPDH (2118, Cell Signaling Technology); rat anti-LAMP1
12 (sc-19992, Santa Cruz Biotechnology); goat anti-Cathepsin-D (Cts-D; sc-6486, Santa
13 Cruz Biotechnology); rabbit anti-EGFR (1005 sc-03, Santa Cruz Biotechnology);
14 Alexa-488 Phalloidin (F-actin , A12379, Thermofisher Scientific); **mouse anti-Transferrin**
15 **Receptor Antibody (H68,4, ThermoFisher Scientific), wheat germ agglutinin**
16 **(WGA) FITC Conjugate (L 4895, Sigma-Aldrich), mouse anti-Na⁺/K⁺-ATPase**
17 **subunit α 1 (C464.6 EMD Millipore),** rabbit anti-MPR and rabbit anti-OCRL (gift
18 from A. De Matteis, Telethon Institute of Genetics and Medicine (TIGEM),
19 Pozzuoli, Italy).

20
21 **Mouse models.** Experiments were conducted on age- and gender-matched *Ocrl*^{Y/+}; *Inpp5b*^{-/-};
22 *Ocrl*^{Y/-}; *Inpp5b*^{-/-} mouse littermates harboring BAC-*INPP5B* expression in equal copies
23 (BAC1) (129S/SvEv * 129S6/SvEvTac * FVB/N* C57BL/6 background), (18) and
24 *Cln5*^{Y/+} and *Cln5*^{Y/-} mice littermates (C57BL/6 background) (48). **All the mice used in this**
25 **study were expressing similar levels of *INPP5B* as analyzed by RT-qPCR (see below).** Mice
26 were maintained under temperature-and humidity-controlled conditions with 12 h light/12 h

1 dark cycles with free access to appropriate standard diet in accordance with the institutional
2 guidelines of National Institutes of Health Guide for the Care and Use of Laboratory Animals.

3
4 **Renal function parameters.** Mice were placed overnight in metabolic cages with ad libitum
5 access to food and drinking water. Urines were collected over ice and body weight, water
6 intake and diuresis were measured at the indicated time point (49). Blood (from sublingual
7 vein) was obtained after anesthesia with ketamine/xylazine or isoflurane. **Urine and blood**
8 **parameters were measured using a UniCel DxC 800 pro Synchron (Beckman Coulter,**
9 **Fullerton, CA, USA), whereas urinary Clara cell protein (CC16) concentration was measured**
10 **in duplicate by enzyme-linked immunosorbent assay (ELISA; BIOMATIK EKU03200) (44).**
11 Albuminuria was measured by Coomassie Blue staining by using ProtoBlue Safe (EC-722,
12 national diagnostics) according to manufacturer instructions.

13
14 **Kidney isolation and primary cultures of proximal tubule cells.** The kidneys were harvested
15 from *Ocr1^{Y/+}* and *Ocr1^{Y/-}* mice and *Clcn5^{Y/+}* and *Clcn5^{Y/-}* mice as previously described (44).
16 Briefly, one half of the kidney was fixed in 4% PFA and processed for immunostaining while
17 the other half was used for protein isolation or RT-qPCR analysis. The contralateral kidney
18 was taken to generate primary cultures of mouse proximal tubule cells (mPTCs) according to
19 a previously established protocol (14). Confluent monolayers of mPTCs, characterized by a
20 high endocytic uptake capacity, were expanded from tubular segments after 6–7 days.

21
22 **Genotyping.** Genomic DNA was isolated from ear biopsies from *Ocr1^{Y/+}*; *Inpp5b^{-/-}*; *BAC-*
23 *INPP5B* and *Ocr1^{Y/-}*; *Inpp5b^{-/-}*; *BAC-INPP5B* mice by using E.Z.N.A Forensic DNA Kit
24 (OMEGA bio-tek) according to the manufacturer instruction. PCR was performed by using
25 the following primers: *Ocr1 wild-type*: the forward primer 5'-CCC TTT
26 TCATCTGTTAGGAGAAATC-3' is located at the junction of intron 18 and the 5' end of exon

1 19. The reverse primer 5'-GCATGG TTAAACGCACTATGTGG-3' is located in intron 19,
 2 which is deleted in the *Ocr1*^{Y/-} line. *Ocr1 knock-out*: the forward primer
 3 5'GCCCTTTGATTCTAATCCCTTTTC ATC-3' is located in the intron positioned just
 4 before the exon 19. The reverse primer 5'-TCT GAGCCCAGAAAGCGAAG-3' is located in
 5 the PGK promoter, which is part of the *neo*-cassette gene targeting vector. *Inpp5b knock-out*:
 6 the forward primer 5'-TAAAGTCTGAAA ATCCAAGGC-3' is located in exon 25. The
 7 reverse primer 5'-CTCATTTCTCCTTGATTCAAT-3' is located in exon 34. *BAC-*
 8 *INPP5B*: the forward primer 5'-CCACCCCACGATTGACTC-3' is localized in exon 1. The
 9 reverse primer 5'-GGTGTCCCAGCCCTCAG-3' is localized also in exon 1. PCR conditions
 10 were: 32 cycles of 94°C for 30 sec, 55°C for 30 sec and 72°C for 1min.

11
 12 **Quantitative real-time PCR.** Total RNA was extracted from mouse kidney tissues using
 13 Aurum Total RNA Fatty and Fibrous Tissue Kit according to manufacturer's protocol (Bio-
 14 Rad, Hercules, CA). DNase I treatment was performed to eliminate genomic DNA
 15 contamination. Total RNA was extracted from primary cell cultures with RNAqueous kit
 16 (Applied Biosystems, Life Technologies). 1 µg of RNA was used to perform the reverse
 17 transcriptase reaction with iScript™ cDNA Synthesis Kit (Bio-Rad). Changes in target gene
 18 mRNA levels were determined by relative RT-qPCR with a CFX96™ Real-Time PCR
 19 Detection System (BioRad) by using iQ™ SYBR Green Supermix (Bio-Rad). RT-qPCR
 20 analyses were performed in duplicate. Specific primers were designed by using Primer3
 21 ([Supplementary Table 1](#)). PCR conditions were 95°C for 3 min followed by 40 cycles of 15
 22 sec at 95°C, 30 sec at 60°C. The PCR products were sequenced with the BigDye terminator
 23 kit (Perkin Elmer Applied Biosystems, Thermo Fischer Scientific). The efficiency of each set
 24 of primers was determined by dilution curves ([Supplementary Table 1](#)). The relative changes
 25 in targeted genes over *Gapdh*, *Actb*, *Hprt1*, *Ppiase*, *18S*, *36B4* mRNAs were calculated using
 26 the $2^{-\Delta\Delta C_t}$ formula (50).

1 ***Immunofluorescence and confocal microscopy.*** Mouse kidneys were fixed by perfusion with
2 50-60 ml of 4% PFA in PBS before being snap-frozen in cryogenic Tissue-Tek OCT
3 compound (Electron Microscopy Sciences, Hatfield, USA). The embedded tissues were
4 sectioned at 5 μ m and processed for immunofluorescent staining as previously described (44).
5 The slides were acquired on Leica SP5 confocal laser scanning microscope (Center for
6 Microscopy and Image Analysis, University of Zurich) equipped with a Leica APO 63x NA
7 1.4 oil immersion objective at a definition of 1024 x 1024 pixels, adjusting the pinhole
8 diameter to 1 Airy unit for each emission channel. Quantitative image analysis was performed
9 by selecting random visual fields containing at least 3-5 proximal tubules (LTL-positive) each
10 one and acquired with the same setting parameters. For quantification of β -lactoglobulin and
11 dextran internalization, the integrated density signal detected within each LTL-positive tubule
12 was calculated. Internalization was then expressed as a ratio between the internal fluorescence
13 and tubule area. Tubules at the border of the picture were excluded. ImageJ software was used
14 for the analysis (17).

15 The mPTCs were fixed in 4% PFA and processed for immunofluorescent staining as
16 previously described (44). Briefly, after incubation with blocking/permeabilization solution
17 (0.1% Saponin ,0.5% BSA and 50mM NH_4Cl in PBS), mPTCs were stained overnight with
18 the appropriate primary antibodies and 45 minutes with the suitable fluorophore-conjugated
19 Alexa secondary antibodies (Invitrogen) or with Alexa-488 Phalloidin (F-actin) or **10 minutes**
20 **with wheat germ agglutinin (WGA) FITC Conjugate.** Immunostained mPTCs were
21 analyzed by a Leica SP5 confocal laser scanning microscope using the settings described
22 above. The quantitative cell image analyses were performed by using ImageJ software and the
23 open-source cell image analysis software CellProfilerTM (51). More details regarding the
24 quantifications are described in Supplementary Materials.

25

1 **Endocytosis assays.** Proximal tubules endocytic capacity of *Ocr1* and *Clcn5* mice was
2 examined by measuring β -lactoglobulin and dextran uptake. β -lactoglobulin was tagged with
3 Cy5 using TM2 Ab labeling kit (Amersham) in accordance with the manufacturer's
4 instructions. 15 minutes after tail-vein injection of Cy5 β -lactoglobulin (1mg/kg B.W., L3908,
5 Sigma) or 30 minutes after injection of 10 kDa Alexa 647-dextran (6 mg/kg B.W.; D22914,
6 Thermo Fisher Scientific), mice were anesthetized and their kidneys were harvested and
7 processed for confocal microscopy. The endocytic capacity of *Ocr1* and *Clcn5* mPTCs was
8 examined by measuring albumin and dextran uptake as described previously (44). Briefly
9 mPTCs were incubated at 37°C with 100 μ g/mL Alexa488-BSA (A13100, Thermo Fisher
10 Scientific) or 250 μ g/mL Alexa 647-dextran diluted in medium without FBS
11 supplementation, for 15 and 30 min respectively. After washing, the cells were fixed in 4%
12 PFA and processed for confocal microscopy

13
14 **PI(4,5)P₂ and PI3P staining.** mPTCs were grown on 35mm dishes and PI(4,5)P₂ or PI3P
15 staining were performed according to previously established protocols (25). Briefly, mPTCs
16 were fixed for 15 min in 2% PFA and permeabilized for 5 min with 20 μ M digitonin in buffer
17 A (20mM PIPES pH 6.8, 137mM NaCl, 2.7mM KCl) for PI(4,5)P₂ or buffer A¹ (150 mM
18 NaCl, 20 mM HEPES, pH 7.4, and 2 mM EDTA) for PI3P. Next, mPTCs were incubated for
19 45 minutes with buffer A containing 10% fetal bovine serum and anti-PI(4,5)P₂ antibody or
20 in buffer A¹ supplemented with 5% goat serum and mCherry-2 \times FYVE PI3P-binding domain
21 (gift from J.Gallop, Gurdon Institute, University of Cambridge). Anti-RFP was used for
22 amplifying m-cherry staining. Studies of colocalization with early endosomes or lysosomes
23 were performed by 1h incubation at room temperature with anti-EEA1 or anti-LAMP1
24 antibodies respectively. After washing and subsequent incubation with appropriate secondary
25 antibodies, mPTCs were post-fixed for 5 min in 2% PFA and analyzed by confocal
26 microscopy.

1 **Lysosomal activity and degradation assays.** The detection of lysosomal activity and
2 degradative capacity in mPTCs was performed by using Bodipy-FL-PepstatinA (P12271,
3 Thermo Fischer Scientific) and DQ-RED BSA (D12051, Thermo Fischer Scientific),
4 respectively. Briefly, mPTCs were pulsed with 1 μ M Bodipy-FL-Pepstatin A or with 10 μ g/mL
5 DQ-RED BSA in pre-warmed media at 37°C for 1h. After washing, cells were fixed,
6 immunostained with anti-LAMP1 and suitable secondary antibody and subsequently analyzed
7 by confocal microscopy (14, 26). Lysosomal processing in *Ocrl* and *Cln5* mice was
8 measured by confocal analysis of kidney proximal tubules after 120 minutes from tail-vein
9 injection of Cy5 β -lactoglobulin.

10

11 **Western blotting.** Proteins were extracted from mouse kidney tissues or primary cultured cells
12 and lysed as previously described (44). **Samples were normalized for protein or urinary**
13 **creatinine levels before loading (20 μ g/lane or 4 μ g/lane, respectively), diluted in Laemmli**
14 **buffer and separated by SDS-PAGE in reducing conditions.** Briefly, gels were blotted onto
15 PVDF membranes, blocked in 5% non-fat milk and probed with appropriate primary and
16 peroxidase-labeled secondary antibody. Protein bands were visualized by chemiluminescence
17 (WBKLS0050, Millipore, Life technologies). Image intensity was measured by ImageJ.

18

19 **Plasma membrane isolation.** mPTCs were lysed in a fractionation buffer (250mM sucrose,
20 20mM HEPES, 10mM KCL, 1.5mM MgCl₂, 1mM EDTA, 1mM EGTA) containing protease
21 and phosphatase inhibitors and passed through a 25G needle. Cell lysates were kept on ice for
22 20 minutes and centrifuged at 720 g (5 minutes at 4°C). The resultant postnuclear
23 supernatants were centrifuged at 10,000 g (5 minutes at 4°C) to eliminate mitochondria. The
24 postmitochondria supernatant were centrifuged at 100,000 g (1h at 4°C) to separate cytosolic
25 (supernatant) and membrane fractions (pellet). The membrane pellets were washed in
26 fractionation buffer by centrifugation (100,000 g for 45min at 4°C) and suspended in lysis

1 buffer (10% glycerol and 0.1% SDS supplemented with protease and phosphatase inhibitors).
2 The cytosolic and membrane fractions were analyzed by SDS-PAGE and western blotting.

3
4 **Behavioral tests.** Open field large arena test, water maze cue navigation and three chambers
5 sociability test were performed on a cohort of 32 male mice aged 32 weeks (16

6 *Ocr1^{Y/+}; Inpp5b^{-/-}; BAC-INPP5B* and 16 *Ocr1^{Y/-}; Inpp5b^{-/-}; BAC-INPP5B*) in order to
7 investigate motor coordination, vision and spatial learning and the social attitude of the mice
8 respectively. Behavior testing procedures will be described briefly here and in more detail in
9 the Supplementary Materials. **Open field large arena test.** Each subject was released near the

10 wall of the arena and observed for 10 min on two subsequent days. Movements were tracked
11 using Noldus EthoVision. **Water-maze cue navigation.** Animals were trained for 2 days to

12 reach the goal platform hidden under milky-water and marked by a salient cue. The
13 localization of the platform in the pool changed for every trial. All subjects were trained on
14 the same sequence of goal positions and released from the same start points (52). **Three-**

15 **chambers sociability test.** The test consisted of a 10-minutes trial where a test mouse was
16 given the choice to spend time in the chamber with the novel object (the cylinder) plus the
17 unfamiliar mouse (social stimulus) and the chamber containing only the empty cylinder. The
18 time spent by the test mouse in the lateral chambers was noted. (53).

19
20 **IntelliCages experiments.** Intellicages experiments were performed on a cohort of 28 male
21 mice aged 24 weeks (13 *Ocr1^{Y/+}; Inpp5b^{-/-}; BAC-INPP5B* and 15 *Ocr1^{Y/-}; Inpp5b^{-/-}; BAC-*
22 *INPP5B*). More details regarding the description of IntelliCage apparatus and mice
23 preparation for IntelliCage experiments are provided in the Supplementary Materials.

24 **Exploration and free adaptation.** During the first 4-7 days in IntelliCage all doors were
25 open providing free access to all 8 drinking bottles (free adaptation). Data of the first 24h of
26 free adaptation were analyzed separately to monitor exploration and habituation of the mice in

1 the new environment (IntelliCage exploration). **Nosepoke adaptation.** During 3-7 days, all
2 doors were closed but can be opened at any time with a nosepoke for 5s once per visit.

3 **Drinking session adaptation.** During 3-7 days the mice were adapted to a fixed drinking
4 schedule with doors opening in response to nose pokes only in the following time spots:
5 04:00-05:00, 11:00-12:00, 16:00-17:00 and 23:00-00:00. (30).

6
7 ***Epon embedding and retinal morphology.*** 36 weeks old mice were euthanized and perfused
8 with PFA 4%. Eyes were enucleated and post-fixed in 4% PFA or 2.5% glutaraldehyde before
9 being embedded in paraffin or epon plastic, respectively. For light microscopy, paraffin
10 sections (including the lens, 5 μ m) were stained with hematoxylin-eosin (HE), while plastic-
11 embedded semi-thin cross-sections (0.5 μ m) were counterstained with toluidine blue as
12 described previously (54, 55). Retinal morphology was analyzed by light microscopy (Zeiss,
13 Axioplan, Jena, Germany).

14
15 ***Muscle analyses.*** Muscles analyses were performed on *Ocr1^{Y/+}* vs. *Ocr1^{Y/-}* male mice aged 24
16 weeks. Lean mass/body weight ratio was determined in 6 pairs of live mice by using the
17 whole body composition analyzer EchoMRI™ (Zinsser Analytic, Frankfurt, Germany) (56).
18 Five pairs of mice were used for muscle and blood sampling. The mice were slightly sedated
19 using isoflurane before being anesthetized with an i.p. injection of a mixture containing
20 urethane (1.5 g/kg) and diazepam (5 mg/kg) and killed by exsanguination. Blood and muscle
21 tissues were collected as previously described (57). Selected leg muscles (triceps surae,
22 soleus, plantaris, gastrocnemius, tibialis anterior, tibialis posterior, quadriceps) were carefully
23 dissected bilaterally and weighed. Muscle mass was expressed relative to body weight.
24 Creatine kinase (CK) activity in plasma was determined by spectrophotometry using a kit
25 (C184-0B ; Catachem, Nuuchem, Oxford, CT, USA) according to the manufacturer's
26 instructions (57).

1 ***Data analysis and Statistics.*** The quantitative data were expressed as means \pm standard error
2 of the mean (s.e.m.). Differences between experimental groups were evaluated using analysis
3 of variance followed by post hoc test, when appropriate. When only two groups were
4 compared, unpaired or paired two tailed Student's *t*-tests were used as appropriate. No
5 statistical methods were used to predetermine the sample size. The sample size (n of
6 biological replicates derived from distinct mice) of each experimental group is described in
7 figure legends. GraphPad Prism software was used for all statistical analyses. Statistical
8 significance was set at a $P < 0.05$.

9

1 **ACKNOWLEDGEMENTS & FUNDING**

2 We are grateful to the Cystinosis Research Foundation (Irvine, CA, USA), the Swiss National
3 Science Foundation (project grant 31003A-169850), the clinical research priority program
4 (KFSP) RADIZ (Rare Disease Initiative Zurich) of the UZH, the Swiss National Centre of
5 Competence in Research (NCCR) Kidney Control of Homeostasis (Kidney.CH) for support
6 and Junior Grant (to A.L.), and the Fondation Suisse de Recherche sur les Maladies
7 Musculaires (FSRMM).

8 We acknowledge Jennifer Gallop, Jonathan Gadsby and Eric Olinger for fruitful discussions,
9 Marcello Polesel, Claus-Dieter Schuh, Huguette Debaix and Nadine Nagele for providing
10 technical assistance, Jonathan R. Gadsby, Renata Kozyraki, Pierre Verroust and Carsten A.
11 Wagner for providing reagents. We thank the Center for Microscopy and Image Analysis of
12 the University of Zurich (Zurich, Switzerland) for providing the equipment for imaging
13 acquisition and the support for imaging analysis.

14

15 **Competing financial interests:** The authors declare no competing financial interests

16

17

18

19

1 REFERENCES

- 2 1. Eckardt, K.U., Coresh, J., Devuyst, O., Johnson, R.J., Kottgen, A., Levey, A.S. and Levin,
3 A. (2013) Evolving importance of kidney disease: from subspecialty to global health burden.
4 *Lancet*, **382**, 158-169.
- 5 2. Devuyst, O. and Luciani, A. (2015) Chloride transporters and receptor-mediated
6 endocytosis in the renal proximal tubule. *J. Physiol.*, **593**, 4151-4164.
- 7 3. Christensen, E.I., Verroust, P.J. and Nielsen, R. (2009) Receptor-mediated endocytosis in
8 renal proximal tubule. *Pflugers. Arch.*, **458**, 1039-1048.
- 9 4. Devuyst, O. and Thakker, R.V. (2010) Dent's disease. *Orphanet J. Rare Dis.*, **5**, 28.
- 10 5. Devuyst, O., Knoers, N.V., Remuzzi, G. and Schaefer, F. (2014) Rare inherited kidney
11 diseases: challenges, opportunities, and perspectives. *Lancet*, **383**, 1844-1859.
- 12 6. Devuyst, O., Christie, P.T., Courtoy, P.J., Beauwens, R. and Thakker, R.V. (1999) Intra-
13 renal and subcellular distribution of the human chloride channel, CLC-5, reveals a
14 pathophysiological basis for Dent's disease. *Hum. Mol. Genet.*, **8**, 247-257.
- 15 7. De Matteis, M.A., Staiano, L., Emma, F. and Devuyst, O. (2017) The 5-phosphatase OCRL
16 in Lowe syndrome and Dent disease 2. *Nat. Rev. Nephrol.*, **13**, 455-470.
- 17 8. Mao, Y., Balkin, D.M., Zoncu, R., Erdmann, K.S., Tomasini, L., Hu, F., Jin, M.M.,
18 Hodsdon, M.E. and De Camilli, P. (2009) A PH domain within OCRL bridges clathrin-
19 mediated membrane trafficking to phosphoinositide metabolism. *Embo j.*, **28**, 1831-1842.
- 20 9. Ponting, C.P. (2006) A novel domain suggests a ciliary function for ASPM, a brain size
21 determining gene. *Bioinformatics*, **22**, 1031-1035.
- 22 10. Faucherre, A., Desbois, P., Satre, V., Lunardi, J., Dorseuil, O. and Gacon, G. (2003) Lowe
23 syndrome protein OCRL1 interacts with Rac GTPase in the trans-Golgi network. *Hum. Mol.*
24 *Genet.*, **12**, 2449-2456.
- 25 11. Hichri, H., Rendu, J., Monnier, N., Coutton, C., Dorseuil, O., Poussou, R.V., Baujat, G.,
26 Blanchard, A., Nobili, F., Ranchin, B. *et al.* (2011) From Lowe syndrome to Dent disease:

1 correlations between mutations of the OCRL1 gene and clinical and biochemical phenotypes.
2 *Hum. mutat.*, **32**, 379-388.

3 12. Christensen, E.I., Devuyst, O., Dom, G., Nielsen, R., Van der Smissen, P., Verroust, P.,
4 Leruth, M., Guggino, W.B. and Courtoy, P.J. (2003) Loss of chloride channel ClC-5 impairs
5 endocytosis by defective trafficking of megalin and cubilin in kidney proximal tubules. *Proc.*
6 *Natl. Acad. Sci. U. S. A.*, **100**, 8472-8477.

7 13. Vicinanza, M., Di Campli, A., Polishchuk, E., Santoro, M., Di Tullio, G., Godi, A.,
8 Levtchenko, E., De Leo, M.G., Polishchuk, R., Sandoval, L. *et al.* (2011) OCRL controls
9 trafficking through early endosomes via PtdIns4,5P(2)-dependent regulation of endosomal
10 actin. *Embo j.*, **30**, 4970-4985.

11 14. Luciani, A., Sirac, C., Terryn, S., Javaugue, V., Prange, J.A., Bender, S., Bonaud, A.,
12 Cogne, M., Aucouturier, P., Ronco, P. *et al.* (2016) Impaired Lysosomal Function Underlies
13 Monoclonal Light Chain-Associated Renal Fanconi Syndrome. *J. Am. Soc. Nephrol.*, **27**,
14 2049-2061.

15 15. Janne, P.A., Suchy, S.F., Bernard, D., MacDonald, M., Crawley, J., Grinberg, A.,
16 Wynshaw-Boris, A., Westphal, H. and Nussbaum, R.L. (1998) Functional overlap between
17 murine Inpp5b and Ocr11 may explain why deficiency of the murine ortholog for OCRL1
18 does not cause Lowe syndrome in mice. *J. Clin. Invest.*, **101**, 2042-2053.

19 16. Norris, F.A., Atkins, R.C. and Majerus, P.W. (1997) The cDNA cloning and
20 characterization of inositol polyphosphate 4-phosphatase type II. Evidence for conserved
21 alternative splicing in the 4-phosphatase family. *J. Biol. Chem.*, **272**, 23859-23864.

22 17. Inoue, K., Balkin, D.M., Liu, L., Nandez, R., Wu, Y., Tian, X., Wang, T., Nussbaum, R.,
23 De Camilli, P. and Ishibe, S. (2017) Kidney Tubular Ablation of Ocr1/Inpp5b Phenocopies
24 Lowe Syndrome Tubulopathy. *J. Am. Soc. Nephrol.*, **28**, 1399-1407.

- 1 18. Bothwell, S.P., Chan, E., Bernardini, I.M., Kuo, Y.M., Gahl, W.A. and Nussbaum, R.L.
2 (2011) Mouse model for Lowe syndrome/Dent Disease 2 renal tubulopathy. *J. Am. Soc.*
3 *Nephrol.*, **22**, 443-448.
- 4 19. Terryn, S., Jouret, F., Vandenabeele, F., Smolders, I., Moreels, M., Devuyst, O., Steels, P.
5 and Van Kerkhove, E. (2007) A primary culture of mouse proximal tubular cells, established
6 on collagen-coated membranes. *Am. J. Physiol. Renal. Physiol.*, **293**, F476-485.
- 7 20. Zhang, X., Hartz, P.A., Philip, E., Racusen, L.C. and Majerus, P.W. (1998) Cell lines
8 from kidney proximal tubules of a patient with Lowe syndrome lack OCRL inositol
9 polyphosphate 5-phosphatase and accumulate phosphatidylinositol 4,5-bisphosphate. *J. Biol.*
10 *Chem.*, **273**, 1574-1582.
- 11 21. Oltrabella, F., Pietka, G., Ramirez, I.B., Mironov, A., Starborg, T., Drummond, I.A.,
12 Hinchliffe, K.A. and Lowe, M. (2015) The Lowe syndrome protein OCRL1 is required for
13 endocytosis in the zebrafish pronephric tubule. *PLoS. Genet.*, **11**, e1005058.
- 14 22. Senju, Y., Kalimeri, M., Koskela, E.V., Somerharju, P., Zhao, H., Vattulainen, I. and
15 Lappalainen, P. (2017) Mechanistic principles underlying regulation of the actin cytoskeleton
16 by phosphoinositides. *Proc. Natl. Acad. Sci. U. S. A.*, **114**, E8977-e8986.
- 17 23. Perez Bay, A.E., Schreiner, R., Benedicto, I., Paz Marzolo, M., Banfelder, J., Weinstein,
18 A.M. and Rodriguez-Boulan, E.J. (2016) The fast-recycling receptor Megalin defines the
19 apical recycling pathway of epithelial cells. *Nat. Commun.*, **7**, 11550.
- 20 24. Pfeffer, S.R. (2009) Multiple routes of protein transport from endosomes to the trans
21 Golgi network. *FEBS Lett.*, **583**, 3811-3816.
- 22 25. De Leo, M.G., Staiano, L., Vicinanza, M., Luciani, A., Carissimo, A., Mutarelli, M., Di
23 Campli, A., Polishchuk, E., Di Tullio, G., Morra, V. *et al.* (2016) Autophagosome-lysosome
24 fusion triggers a lysosomal response mediated by TLR9 and controlled by OCRL. *Nat. Cell.*
25 *Biol.*, **18**, 839-850.

- 1 26. Perera, R.M., Stoykova, S., Nicolay, B.N., Ross, K.N., Fitamant, J., Boukhali, M.,
2 Lengrand, J., Deshpande, V., Selig, M.K., Ferrone, C.R. *et al.* (2015) Transcriptional control
3 of autophagy-lysosome function drives pancreatic cancer metabolism. *Nature*, **524**, 361-365.
- 4 27. Miaczynska, M. (2013) Effects of membrane trafficking on signaling by receptor tyrosine
5 kinases. *Cold Spring Harb. Perspect. Biol.*, **5**, a009035.
- 6 28. Taylor, T.N., Greene, J.G. and Miller, G.W. (2010) Behavioral phenotyping of mouse
7 models of Parkinson's disease. *Behav. Brain. Res.*, **211**, 1-10.
- 8 29. Fowler, S.C. and Muma, N.A. (2015) Use of a force-sensing automated open field
9 apparatus in a longitudinal study of multiple behavioral deficits in CAG140 Huntington's
10 disease model mice. *Behav. Brain. Res.*, **294**, 7-16.
- 11 30. Vannoni, E., Voikar, V., Colacicco, G., Sanchez, M.A., Lipp, H.P. and Wolfer, D.P.
12 (2014) Spontaneous behavior in the social homecage discriminates strains, lesions and
13 mutations in mice. *J. Neurosci. Methods.*, **234**, 26-37.
- 14 31. Luhmann, U.F., Carvalho, L.S., Holthaus, S.M., Cowing, J.A., Greenaway, S., Chu, C.J.,
15 Herrmann, P., Smith, A.J., Munro, P.M., Potter, P. *et al.* (2015) The severity of retinal
16 pathology in homozygous *Crb1*rd8/rd8 mice is dependent on additional genetic factors. *Hum.*
17 *Mol. Genet.*, **24**, 128-141.
- 18 32. Montjean, R., Aoidi, R., Desbois, P., Rucci, J., Trichet, M., Salomon, R., Rendu, J., Faure,
19 J., Lunardi, J., Gacon, G. *et al.* (2015) OCRL-mutated fibroblasts from patients with Dent-2
20 disease exhibit INPP5B-independent phenotypic variability relatively to Lowe syndrome
21 cells. *Hum. Mol. Genet.*, **24**, 994-1006.
- 22 33. Nandez, R., Balkin, D.M., Messa, M., Liang, L., Paradise, S., Czapla, H., Hein, M.Y.,
23 Duncan, J.S., Mann, M. and De Camilli, P. (2014) A role of OCRL in clathrin-coated pit
24 dynamics and uncoating revealed by studies of Lowe syndrome cells. *eLife*, **3**, e02975.

- 1 34. Bockenhauer, D., Bokenkamp, A., van't Hoff, W., Levtchenko, E., Kist-van Holthe, J.E.,
2 Tasic, V. and Ludwig, M. (2008) Renal phenotype in Lowe Syndrome: a selective proximal
3 tubular dysfunction. *Clin. J. Am. Soc. Nephrol.*, **3**, 1430-1436.
- 4 35. Piwon, N., Gunther, W., Schwake, M., Bosl, M.R. and Jentsch, T.J. (2000) ClC-5 Cl⁻
5 channel disruption impairs endocytosis in a mouse model for Dent's disease. *Nature*, **408**,
6 369-373.
- 7 36. Gorvin, C.M., Wilmer, M.J., Piret, S.E., Harding, B., van den Heuvel, L.P., Wrong, O.,
8 Jat, P.S., Lippiat, J.D., Levtchenko, E.N. and Thakker, R.V. (2013) Receptor-mediated
9 endocytosis and endosomal acidification is impaired in proximal tubule epithelial cells of
10 Dent disease patients. *Proc. Natl. Acad. Sci. U. S. A.*, **110**, 7014-7019.
- 11 37. Novarino, G., Weinert, S., Rickheit, G. and Jentsch, T.J. (2010) Endosomal chloride-
12 proton exchange rather than chloride conductance is crucial for renal endocytosis. *Science*
13 *(New York, N.Y.)*, **328**, 1398-1401.
- 14 38. Biemesderfer, D. (2006) Regulated intramembrane proteolysis of megalin: linking urinary
15 protein and gene regulation in proximal tubule? *Kidney. Int.*, **69**, 1717-1721.
- 16 39. Zou, Z., Chung, B., Nguyen, T., Mentone, S., Thomson, B. and Biemesderfer, D. (2004)
17 Linking receptor-mediated endocytosis and cell signaling: evidence for regulated
18 intramembrane proteolysis of megalin in proximal tubule. *J. Biol. Chem.*, **279**, 34302-34310.
- 19 40. Norden, A.G., Lapsley, M., Igarashi, T., Kelleher, C.L., Lee, P.J., Matsuyama, T.,
20 Scheinman, S.J., Shiraga, H., Sundin, D.P., Thakker, R.V. *et al.* (2002) Urinary megalin
21 deficiency implicates abnormal tubular endocytic function in Fanconi syndrome. *J. Am. Soc.*
22 *Nephrol.*, **13**, 125-133.
- 23 41. Zoncu, R., Perera, R.M., Balkin, D.M., Pirruccello, M., Toomre, D. and De Camilli, P.
24 (2009) A phosphoinositide switch controls the maturation and signaling properties of APPL
25 endosomes. *Cell*, **136**, 1110-1121.

- 1 42. Di Paolo, G. and De Camilli, P. (2006) Phosphoinositides in cell regulation and
2 membrane dynamics. *Nature*, **443**, 651-657.
- 3 43. Symons, M.H. and Mitchison, T.J. (1991) Control of actin polymerization in live and
4 permeabilized fibroblasts. *J. Cell. Biol.*, **114**, 503-513.
- 5 44. Festa, B.P., Chen, Z., Berquez, M., Debaix, H., Tokonami, N., Prange, J.A., Hoek, G.V.,
6 Alessio, C., Raimondi, A., Nevo, N. *et al.* (2018) Impaired autophagy bridges lysosomal
7 storage disease and epithelial dysfunction in the kidney. *Nat. Commun.*, **9**, 161.
- 8 45. Park, E., Choi, H.J., Lee, J.M., Ahn, Y.H., Kang, H.G., Choi, Y.M., Park, S.J., Cho, H.Y.,
9 Park, Y.H., Lee, S.J. *et al.* (2014) Muscle involvement in Dent disease 2. *Pediatr. Nephrol.*,
10 **29**, 2127-2132.
- 11 46. Erdmann, K.S., Mao, Y., McCrea, H.J., Zoncu, R., Lee, S., Paradise, S., Modregger, J.,
12 Biemesderfer, D., Toomre, D. and De Camilli, P. (2007) A role of the Lowe syndrome protein
13 OCRL in early steps of the endocytic pathway. *Dev. Cell.*, **13**, 377-390.
- 14 47. Bothwell, S.P., Farber, L.W., Hoagland, A. and Nussbaum, R.L. (2010) Species-specific
15 difference in expression and splice-site choice in Inpp5b, an inositol polyphosphate 5-
16 phosphatase paralogous to the enzyme deficient in Lowe Syndrome. *Mamm. Genome.*, **21**,
17 458-466.
- 18 48. Wang, S.S., Devuyst, O., Courtoy, P.J., Wang, X.T., Wang, H., Wang, Y., Thakker, R.V.,
19 Guggino, S. and Guggino, W.B. (2000) Mice lacking renal chloride channel, CLC-5, are a
20 model for Dent's disease, a nephrolithiasis disorder associated with defective receptor-
21 mediated endocytosis. *Hum. Mol. Genet.*, **9**, 2937-2945.
- 22 49. Raggi, C., Luciani, A., Nevo, N., Antignac, C., Terryn, S. and Devuyst, O. (2014)
23 Dedifferentiation and aberrations of the endolysosomal compartment characterize the early
24 stage of nephropathic cystinosis. *Hum. Mol. Genet.*, **23**, 2266-2278.

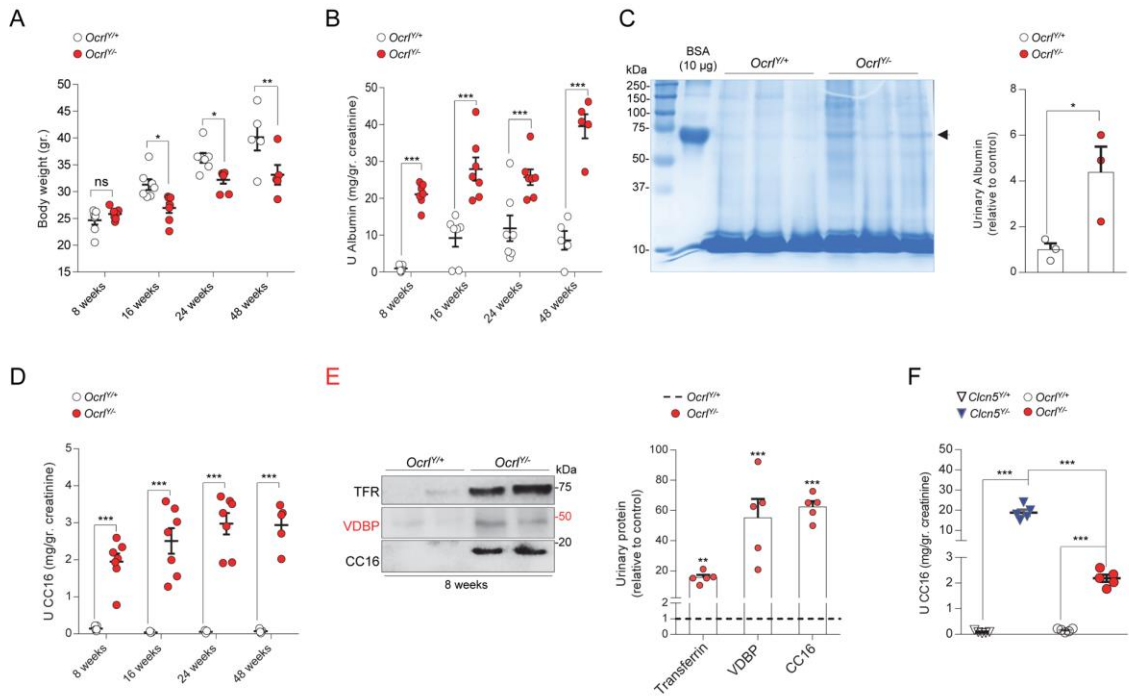
- 1 50. Vandesompele, J., De Preter, K., Pattyn, F., Poppe, B., Van Roy, N., De Paepe, A. and
2 Speleman, F. (2002) Accurate normalization of real-time quantitative RT-PCR data by
3 geometric averaging of multiple internal control genes. *Genome Biol.*, **3**, Research0034.
- 4 51. Carpenter, A.E., Jones, T.R., Lamprecht, M.R., Clarke, C., Kang, I.H., Friman, O.,
5 Guertin, D.A., Chang, J.H., Lindquist, R.A., Moffat, J. *et al.* (2006) CellProfiler: image
6 analysis software for identifying and quantifying cell phenotypes. *Genome Biol.*, **7**, R100.
- 7 52. Mohajeri, M.H., Madani, R., Saini, K., Lipp, H.P., Nitsch, R.M. and Wolfer, D.P. (2004)
8 The impact of genetic background on neurodegeneration and behavior in seized mice.
9 *Genes Brain Behav.*, **3**, 228-239.
- 10 53. Nadler, J.J., Moy, S.S., Dold, G., Trang, D., Simmons, N., Perez, A., Young, N.B.,
11 Barbaro, R.P., Piven, J., Magnuson, T.R. *et al.* (2004) Automated apparatus for quantitation
12 of social approach behaviors in mice. *Genes Brain Behav.*, **3**, 303-314.
- 13 54. Grimm, C., Wenzel, A., Williams, T., Rol, P., Hafezi, F. and Reme, C. (2001) Rhodopsin-
14 mediated blue-light damage to the rat retina: effect of photoreversal of bleaching. *Invest.*
15 *Ophthalmol. Vis. Sci.*, **42**, 497-505.
- 16 55. Heynen, S.R., Tanimoto, N., Joly, S., Seeliger, M.W., Samardzija, M. and Grimm, C.
17 (2011) Retinal degeneration modulates intracellular localization of CDC42 in photoreceptors.
18 *Mol. Vis.*, **17**, 2934-2946.
- 19 56. Krizo, J.A., Moreland, L.E., Rastogi, A., Mou, X., Prosser, R.A. and Mintz, E.M. (2018)
20 Regulation of Locomotor activity in fed, fasted, and food-restricted mice lacking tissue-type
21 plasminogen activator. *BMC Physiol.*, **18**, 2.
- 22 57. Dorchies, O.M., Reutenauer-Patte, J., Dahmane, E., Ismail, H.M., Petermann, O., Patthey-
23 Vuadens, O., Comyn, S.A., Gayi, E., Piacenza, T., Handa, R.J. *et al.* (2013) The anticancer
24 drug tamoxifen counteracts the pathology in a mouse model of duchenne muscular dystrophy.
25 *Am. J. Pathol.*, **182**, 485-504.

1 **FIGURE LEGENDS**

2 **Figure 1. Growth retardation and renal phenotype in a whole body *Ocr1*^{Y/-} mouse model.**

3 (A) Dot plot representing the measurement of body weight, (B) albumin and (D) clara cell
4 protein 16 (CC16) urinary excretion in *Ocr1* male mice at 8, 16, 24 and 48 weeks after birth (8
5 weeks n= 7 mice per group, 16 weeks n= 7 mice per group, 24 weeks n=7 mice per group, 48
6 weeks n=5 mice per group). (C) Coomassie blue-stained SDS-PAGE analysis of urine derived
7 from 8 weeks old *Ocr1* mice and densitometry quantification of Albumin (n=3 mice per
8 group). 10 µg of bovine serum albumin (BSA) were loaded as positive control (first lane;
9 molecular weight (MW) ≈66.5 kDa). (E) Representative western blotting and densitometry
10 quantification of transferrin (TFR), vitamin D binding protein (VDBP) and CC16 in urine
11 derived from 8 weeks old *Ocr1* mice. (TFR, VDBP and CC16 n= 5 mice per group). (F)
12 Quantification of CC16 urinary excretion in 8 weeks old *Cln5* and *Ocr1* mice (n=5 mice per
13 group). All the urine parameters were normalized to urinary creatinine concentration. Plotted
14 data represent mean ± SEM. Each dot of the graphs represents one mouse. Two-tailed
15 unpaired Student's t-test, *P < 0.05, **P < 0.01 and ***P < 0.001 relative to *Ocr1*^{Y/+} or
16 *Cln5*^{Y/+} mice. ns: not significant.

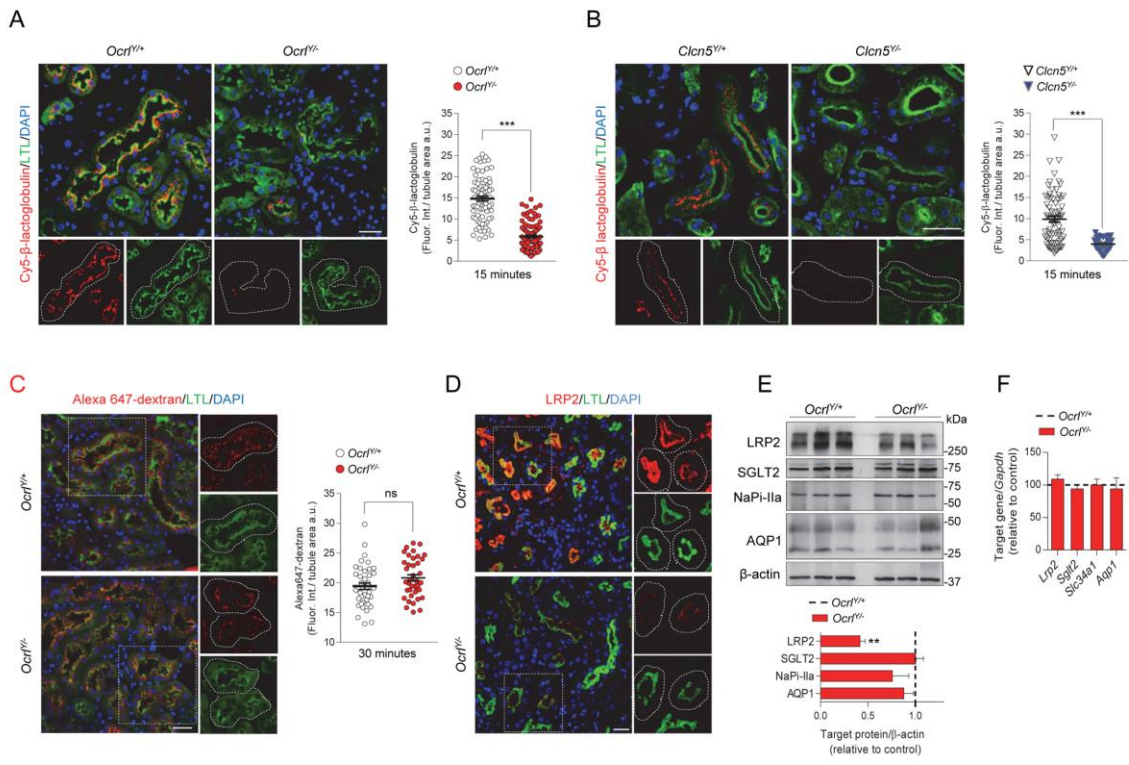
Figure 1



1
2
3
4
5
6
7
8
9
10
11
12
13

1 **Figure 2. Defective receptor-mediated endocytosis in *Ocr1*^{Y/-} mice.**
2 (A-B) Representative confocal micrographs showing Cy5 labeled β -lactoglobulin (red,
3 1mg/kg B.W.) or (C) Alexa 647-labeled dextran uptake (red, 6 mg/kg B.W.) after 15 and 30
4 minutes from tail vein injections respectively and quantifications of the corresponding
5 fluorescent signal in LTL⁺ (*Lotus Tetragonolobus Lectin*, green) proximal tubules from *Ocr1*
6 and *Clcn5* mouse kidneys (n=90 *Ocr1* and n=70 *Clcn5* proximal tubules for Cy5 labeled β -
7 lactoglobulin uptake; n = 40 *Ocr1* proximal tubules for Alexa 647 dextran uptake); n=2 per
8 group, each dot representing fluorescence intensity in one proximal tubule; fluorescence
9 intensity was normalized on tubule area; two-tailed unpaired Student's t-test, ***P < 0.001
10 relative to *Ocr1*^{Y/+} or *Clcn5*^{Y/+} kidneys. ns: not significant). Insets: high magnification of Cy5
11 labeled β -lactoglobulin⁺ or Alexa 647 dextran⁺ structures in LTL⁺ proximal tubules. (D)
12 Representative confocal micrographs showing LRP2 (red) expression in LTL⁺ (green)
13 proximal tubules of *Ocr1* mouse kidneys. Insets: high magnification of LRP2⁺ structures in
14 LTL⁺ proximal tubules. (E) Western blotting and densitometry analyses of LRP2, SGLT2,
15 NaPi-IIa and AQP1 protein levels in whole kidney lysates from *Ocr1* mice. β -actin was used
16 as loading control. Protein levels normalized on β -actin and relative to *Ocr1*^{Y/+} mice (black
17 dotted line), (LRP2 n = 6 mice per group; SGLT2, NaPiIIa and AQP1 n=3 mice per group.
18 Mann-Whitney U test, **P < 0.01 relative to *Ocr1*^{Y/+} kidneys). (F) The mRNA kidney levels
19 of *Lrp2*, *Sglt2*, *Slc34a1* and *Aqp1* were analyzed by real-time qPCR. Gene target expression
20 normalized to *Gapdh* and relative to *Ocr1*^{Y/+} mice (black dotted line), (n = 3 mice per group).
21 Nuclei counterstained with DAPI (blue) in A, B, C and D. Scale bars 25 μ m. Plotted data
22 represent mean \pm SEM.

Figure 2

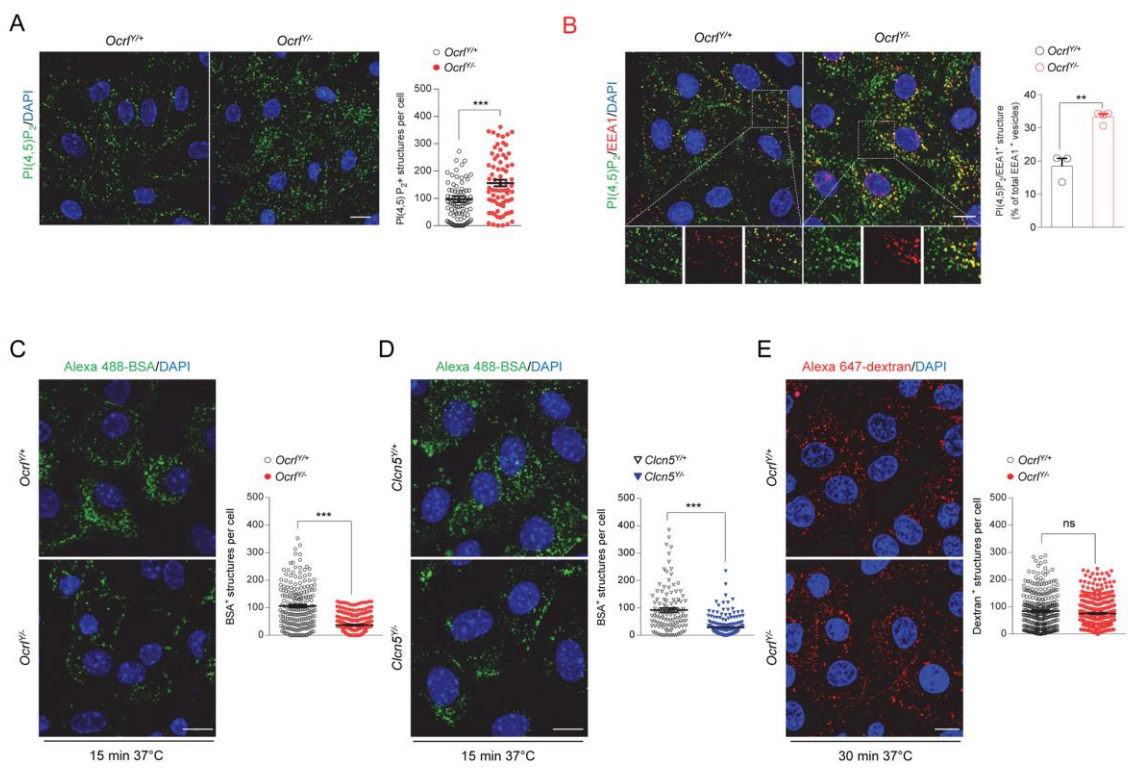


1
2
3
4
5
6
7
8
9
10
11
12
13

1 **Figure 3. Altered PI(4, 5) P₂ subcellular distribution and receptor-mediated endocytosis**
2 **in *Ocrl*^{Y/-} mPTCs.**

3 (A) Representative confocal micrographs and quantification of PI(4,5)P₂⁺ structures (green) in
4 *Ocrl* mPTCs (n ≈ 80 cells pooled from three mouse kidneys per condition; each dot
5 representing the number of PI(4,5) P₂⁺ structures in a cell). (B) Representative confocal
6 micrographs of *Ocrl* mPTCs immunostained with anti- PI(4,5)P₂ (green) and anti-EEA1 (red,
7 early endosomes) and quantification (adjacent panel) of the number of PI(4,5)P₂/EEA1⁺
8 structures by confocal microscopy (percentage of total EEA1⁺ vesicles; n= 3 *Ocrl*^{Y/+}; n=4
9 *Ocrl*^{Y/-} randomly selected fields per condition, each containing ≈ 15-20 cells). Insets: high
10 magnification of PI(4,5)P₂/EEA1⁺ structures. (C-D) *Ocrl* and *Cln5* mPTCs were loaded with
11 Alexa 488-BSA (green, 100 μg ml⁻¹ for 15 min at 37 °C), fixed, and analyzed by confocal
12 microscopy. Quantification of the number of Alexa 488-BSA⁺ structures (n ≈150-250 cells
13 pooled from three mouse kidneys per condition; each point representing the number of BSA⁺
14 structures in a cell). (E) *Ocrl* mPTCs were loaded with Alexa 647-dextran 10kDa (red, 250 μg
15 ml⁻¹ for 30 min at 37 °C), fixed, and analyzed by confocal microscopy. Quantification of the
16 number of A1647-dextran⁺ structures (n≈ 200-250 cells pooled from three mouse kidneys per
17 condition; each dot representing the number of dextran⁺ structures in a cell). Nuclei
18 counterstained with DAPI (blue). Scale bars in A and B 15μm, in C, D and E 10 μm. Plotted
19 data represent mean ± SEM. Two-tailed unpaired Student's t-test, **P < 0.01, ***P < 0.001
20 relative to *Ocrl*^{Y/+} or *Cln5*^{Y/+} mPTCs. ns: not significant.

Figure 3



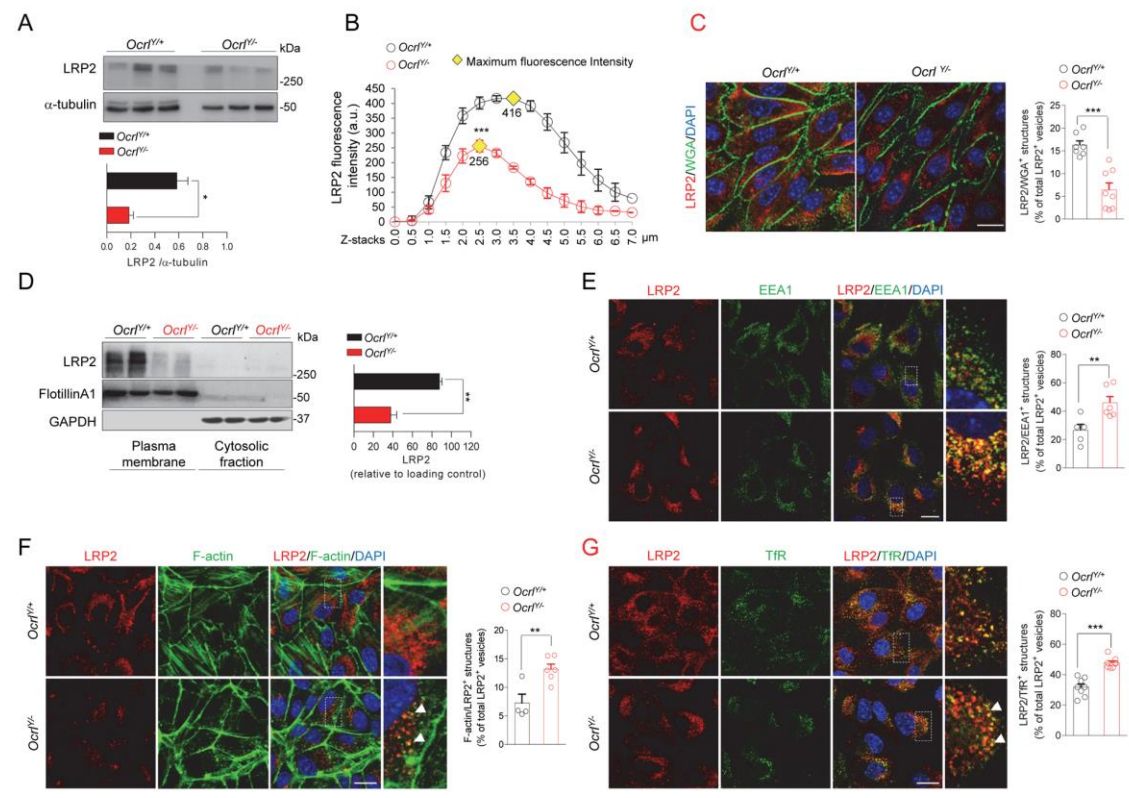
1
 2
 3
 4
 5
 6
 7
 8
 9
 10
 11
 12
 13

1 **Figure 4. *Ocrl*^{Y/-} mPTCs exhibit decreased expression of LRP2 and defective endocytic**
2 **recycling.**

3 (A) Representative western blotting and quantification of LRP2 in whole *Ocrl* mPTCs lysates.
4 α - tubulin was used as loading control (n=4 mice per group). (B) Dot plot representing
5 distribution and average fluorescence intensity of LRP2 along Z-stacks projections in *Ocrl*
6 mPTCs. Yellow rhombus represents the maximum peak of fluorescence intensity.
7 Quantifications of Z-stacks were obtained from 3 randomly selected fields per condition, with
8 each containing \approx 15-20 cells. (C) Representative confocal micrographs and quantification of
9 LRP2/WGA⁺ structures by confocal microscopy (in percentage of total LRP2⁺ vesicles, n=7
10 *Ocrl*^{Y/+}; n=8 *Ocrl*^{Y/-} randomly selected fields per condition, each containing \approx 10-15 cells). (D)
11 Representative western blotting and quantification of LRP2 protein levels in plasma
12 membrane fraction derived from *Ocrl* mPTCs. Flotillin A1 and GAPDH were used as purity
13 marker and loading control of the plasma membrane and cytosolic fractions respectively (n=3
14 independent experiment). (E) Representative confocal micrographs of *Ocrl* mPTCs
15 immunostained with anti-LRP2 (red) and anti-EEA1 (green, early endosomes) and
16 quantification (adjacent panel) of the number of LRP2/EEA1⁺ structures by confocal
17 microscopy (percentage of total LRP2⁺ vesicles; n=5 *Ocrl*^{Y/+}; n=6 *Ocrl*^{Y/-} randomly selected
18 fields per condition, each containing \approx 15-20 cells). Insets: high magnification of
19 LRP2/EEA1⁺ structures. (F) Representative confocal micrographs of *Ocrl* mPTCs
20 immunostained with anti-LRP2 (red) and Alexa-Fluor-488-phalloidin (green, F-actin).
21 Quantification (adjacent panel) of the number of F-Actin/LRP2⁺ structures (in percentage of
22 total LRP2⁺ vesicles, n= 4 *Ocrl*^{Y/+}; n=6 *Ocrl*^{Y/-} randomly selected fields per condition, each
23 containing \approx 10-15 cells). Insets: high magnification of F-actin/LRP2⁺ structures. (G)
24 Representative confocal micrographs of *Ocrl* mPTCs stained with anti-TfR (green) and anti-
25 LRP2 (red) and quantification of the number of TfR/LRP2⁺ structures by confocal

1 microscopy (in percentage of total LRP2⁺ vesicles, n=8 randomly selected fields per
 2 condition, each containing ≈20-25 cells). Insets: high magnification of TfR/LRP2⁺ structures.
 3 Nuclei counterstained with DAPI (blue) in C, E, F and G. Scale bars in E, F and G 15μm and
 4 in C 20μm. Plotted data represent mean ± SEM. Two-tailed unpaired Student's t-test, *P <
 5 0.05, **P < 0.01 and ***P < 0.001 relative to *Ocr1*^{Y/+} mPTCs.

Figure 4

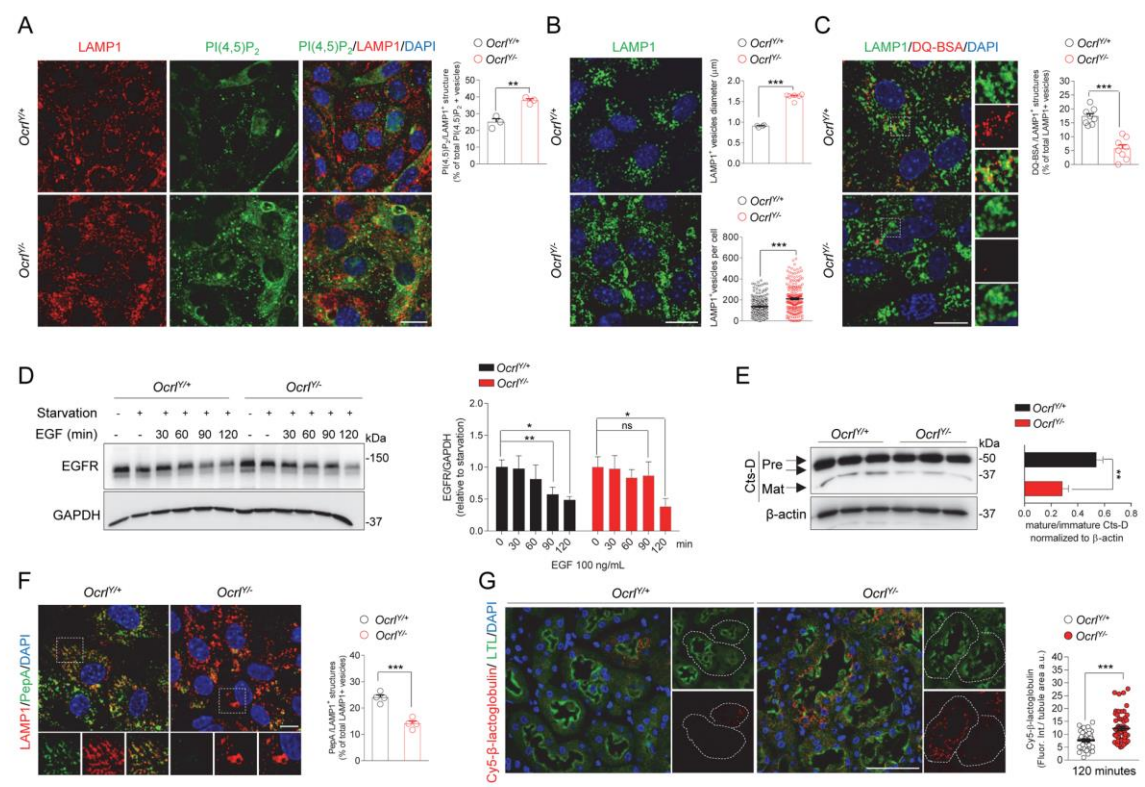


6
 7
 8
 9
 10
 11
 12
 13
 14

1 **Figure 5. Altered lysosomal dynamics and degradative capacity in *Ocrl*^{Y/-} mPTCs.**
2 (A) *Ocrl* mPTCs were immunostained with anti-PI(4,5)P₂ (green) and anti-LAMP1 (red,
3 lysosomes) and the number of PI(4,5)P₂ /LAMP1⁺ structures were quantified by confocal
4 microscopy (in percentage of total PI(4,5)P₂⁺ vesicles; n=3 randomly selected fields per
5 condition, each containing ≈ 40-50 cells). (B) Representative confocal micrographs of *Ocrl*
6 mPTCs immunostained with anti-LAMP1 (green). Quantification of the average LAMP1⁺
7 vesicles diameter (top, n= 4 *Ocrl*^{Y/+} ; and n=6 *Ocrl*^{Y/-} randomly selected fields per condition,
8 each containing ≈ 50-60 cells) and number of structures (bottom, n≈ 200-220 cells pooled
9 from 3 *Ocrl* kidneys per group, each point representing the number of LAMP1⁺ structure in a
10 cell). (C) *Ocrl* mPTCs were loaded with DQ (dequenched) Red BSA (red, 10 μg ml⁻¹ for 1h
11 at 37 °C), immunostained with anti- LAMP1 (green, lysosomes) fixed and analyzed by
12 confocal microscopy. Quantification of number of DQ Red BSA /LAMP1⁺ structures (in
13 percentage of total LAMP1⁺ structures, n = 8 randomly selected fields per condition, with
14 each containing ≈ 10–15 cells). Insets: high magnification of DQ Red BSA / LAMP1⁺
15 vesicles. (D) *Ocrl* mPTCs were serum starved for 24 h and then stimulated with EGF (100
16 ng/ml) for the indicated times. EGFR protein levels were evaluated by western blotting and
17 quantified relative to time 0 (starved cells). (n=3mice per group; two-tailed unpaired
18 Student's t-test, *P < 0.05, **P < 0.01 relative to *Ocrl*^{Y/+} or *Ocrl*^{Y/-} starved mPTCs. ns: not
19 significant). (E) Western blotting and densitometry analyses of Cathepsin D (Cts-D) protein
20 levels in *Ocrl* mPTCs (n= 4mice per group). (F) *Ocrl* mPTCs were loaded with Bodipy-FL-
21 PepA (1 μM, for 1 h at 37 °C, green), immunostained with anti- LAMP1 antibody (red) and
22 analysed by confocal microscopy. Quantification of numbers of PepA/LAMP1⁺ structures (in
23 percentage of total LAMP1⁺ structures; n = 4 randomly selected fields per condition, with
24 each containing ~ 20–25 cells). (G) Representative confocal micrographs showing Cy5
25 labeled β-lactoglobulin (red) after 120 minutes from tail vein injections and quantifications of

1 the corresponding fluorescent signal in LTL⁺ proximal tubules from *Ocr1* mouse kidneys
 2 (n=50 *Ocr1* proximal tubules; each dot representing fluorescence intensity in one proximal
 3 tubule; fluorescence intensity was normalized on tubule area). Nuclei counterstained with
 4 DAPI (blue) in **A**, **B**, **C**, **F** and **G**. Scale bars in **A**, **B** and **C** 15 μm; in **F** 10 μm and in **G** 50
 5 μm. Plotted data represent mean ± SEM. Two-tailed unpaired Student's t-test. **P < 0.01,
 6 ***P < 0.001 relative to *Ocr1*^{+/+} mPTCs or kidneys.

Figure 5



7
8
9
10
11
12
13

1 **Figure 6. Impaired locomotor activity and muscular defects in *Ocr1^{Y/-}* mice.**

2 (A-C) Open field large arena test was performed during 10 minutes of two subsequent days in

3 a circular arena with a diameter of 150 cm on a cohort of 16 *Ocr1^{Y/+}* and 16 *Ocr1^{Y/-}* age

4 matched male mice. (A) Illustrative pictures representing the trajectories traveled by *Ocr1*

5 mice during the open field large arena test. (B) Dot plot representing the distance covered by

6 *Ocr1* mice during the large open field arena test. The distance traveled by each mouse is

7 normalized to 1 minute observation time and plotted as function of time for each bin (bin=5

8 minutes) (split ANOVA effects followed by post-hoc tests between genotype for each bin:

9 Bin1 *P < 0.1, Bin2 *P < 0.05, Bin3 *P < 0.05). (C) Dotted bar graph representing the

10 frequency of resting, lingering and walking episodes exhibited by *Ocr1* mice during the open

11 field large arena test (split ANOVA effects followed by post-hoc tests between genotype for

12 each state: rest *P < 0.05, linger, *P < 0.05, walk *P < 0.05). (D) IntelliCage experiments

13 were performed on a cohort of age matched male *Ocr1* mice (13 *Ocr1^{Y/+}* and 13 *Ocr1^{Y/-}*). Dot

14 plot representing the median licking frequency during drinking restriction protocol. Base

15 indicates the licking frequency during the last 24h of nose poke adaptation phase (split

16 ANOVA effects followed by post-hoc tests between genotype for each time point: Day1 **P

17 < 0.01, Day 2-2last *P < 0.05, Last day **P < 0.001). (E) Lean mass/body weight ratio

18 determined by whole body composition analysis in *Ocr1* mice (n=6 mice per group). (F)

19 Muscle mass, relative to body weight, of selected hind limb muscles obtained by bilateral

20 dissection of 5 pairs of *Ocr1* mice (n=10 values for symmetrical leg muscles). (G) Plasma

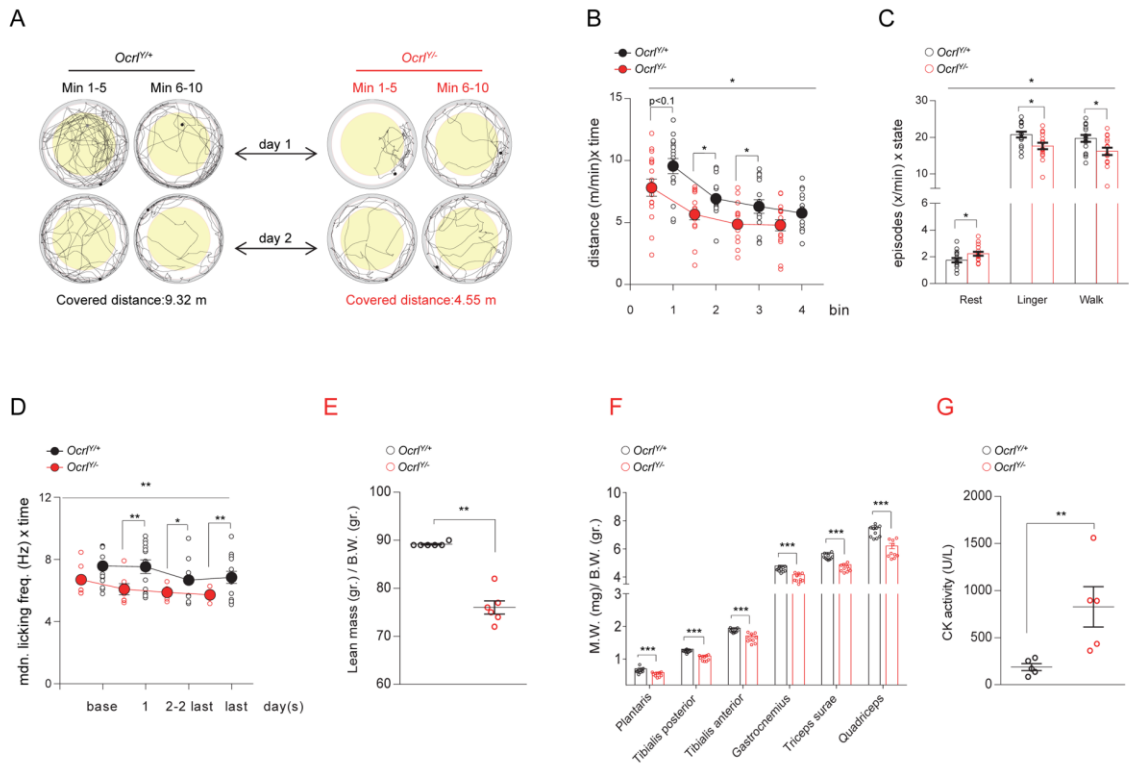
21 creatine kinase activity (CK) in the corresponding 5 pairs of *Ocr1* mice (as in B). Plotted data

22 represent mean \pm SEM. In B, C and D One-way ANOVA between subject factor genotype:

23 *P < 0.05; **P < 0.01 (on the top of each graph); in E, F and G Mann Withney test, **P <

24 0.01; ***P < 0.001 relative to *Ocr1^{Y/+}* mice.

Figure 6



1
2
3

Table 1. Body weight, urine and blood parameters in *Ocr1* and *Clcn5* mice.

	8 weeks		8 weeks		16 weeks		24 weeks		48 weeks	
	<i>Ocr1</i> ^{Y/+} (n= 7)	<i>Ocr1</i> ^{Y/-} (n= 7)	<i>Clcn5</i> ^{Y/+} (n=4)	<i>Clcn5</i> ^{Y/-} (n=4)	<i>Ocr1</i> ^{Y/+} (n= 7)	<i>Ocr1</i> ^{Y/-} (n= 7)	<i>Ocr1</i> ^{Y/+} (n= 7)	<i>Ocr1</i> ^{Y/-} (n= 7)	<i>Ocr1</i> ^{Y/+} (n= 5)	<i>Ocr1</i> ^{Y/-} (n= 5)
Body weight (gr.)	24.6 ± 0.8	25.8 ± 0.4	31.03 ± 1.3	27.2 ± 1.2	31.3 ± 0.9	26.6 ± 0.9 ^a	36.3 ± 0.9	32.2 ± 0.7 ^a	40.1 ± 2.5	33.1 ± 1.8 ^b
U volume (μL/12h)	2267 ± 337	3122 ± 328	1400 ± 82	3025 ± 111 ^c	2414 ± 298	3571 ± 561	2388 ± 650	2462 ± 544	1655 ± 315	2138 ± 555
Diuresis (μL/gr. B.W./min)	0.12 ± 0.02	0.16 ± 0.01	0.06 ± 0.004	0.15 ± 0.004 ^b	0.1 ± 0.01	0.18 ± 0.03	0.09 ± 0.02	0.11 ± 0.02	0.06 ± 0.01	0.091 ± 0.02
U Albumin (mg/gr creatinine)	0.97 ± 0.3	21 ± 1.1 ^c	3.3 ± 0.2	69 ± 13 ^b	9.2 ± 2.3	27.9 ± 3.1 ^c	11.8 ± 3.4	25.7 ± 2.1 ^c	8.6 ± 2.5	39.5 ± 3.2 ^c
U CC16 (mg/gr creatinine)	0.14 ± 0.02	1.9 ± 0.2 ^c	0.09 ± 0.02	19.2 ± 1.9 ^c	0.03 ± 0.00	2.5 ± 0.3 ^c	0.05 ± 0.01	2.9 ± 0.3 ^c	0.06 ± 0.02	2.9 ± 0.2 ^c
U Calcium (mg/gr.creatinine)	94.9 ± 6.4	73.9 ± 14.5	58.2 ± 16.4	144 ± 11.6 ^b	135 ± 11.2	148 ± 14.3	70.4 ± 20.3	93.8 ± 8	148 ± 23	109 ± 11.5
U Glucose (mg/gr. creatinine)	1561 ± 136	1451 ± 95	1122 ± 76	1982 ± 341 ^a	1440 ± 171	1418 ± 163	1081 ± 179	1672.7 ± 493	3040 ± 993	1534 ± 93
U Phosphate (mg./gr. creatinine)	4051 ± 419	4316 ± 160	2684 ± 314	4294 ± 448 ^a	4436 ± 403	4017 ± 372	2584 ± 422	2761 ± 423	3072. ± 434	3101 ± 106
U Creatinine (mg/dL)	26 ± 1.8	24 ± 1.5	31 ± 1.9	30 ± 2.5	23.4 ± 2.8	19.5 ± 1.9	35.5 ± 6.4	29.9 ± 3.8	25.4 ± 5	27.5 ± 1.9
BUN (mg/dL)	–	–	–	–	22 ± 1.5	22 ± 1.3	–	–	23.8 ± 2.7	22.3 ± 1.2
Plasma Creatinine (mg/dL)	–	–	–	–	0.09 ± 0.02	0.08 ± 0.006	–	–	0.05 ± 0.007	0.06 ± 0.01

U, Urine; CC16, Clara cell protein 16; BUN, Blood urea nitrogen. All the measurements were performed on *Ocr1*^{Y/+} and *Ocr1*^{Y/-} male mice matched per age. Plotted data represent mean ± SEM. Two-tailed unpaired Student's t-test was applied between genotypes for the indicated time point.

^a $p < 0.05$ versus *Ocr1*^{Y/+} or *Clcn5*^{Y/+}; ^b $p < 0.01$ versus *Ocr1*^{Y/+} or *Clcn5*^{Y/+}; ^c $p < 0.001$ versus *Ocr1*^{Y/+} or *Clcn5*^{Y/+}.

ABBREVIATIONS

OCRL: Lowe Oculocerebrorenal syndrome

INPP5B: Inositol Polyphosphate-5-Phosphatase B

PI(4,5)P₂: phosphatidylinositol 4, 5-bisphosphate

PI3P: phosphatidylinositol 3-phosphate

PT: proximal tubule

mPTCs: mouse primary culture of proximal tubule cells

LMW: low-molecular-weight

CKD: chronic kidney disease

PH: pleckstrin homology

ASH: ASPM, SPD-2, Hydin domain

BAC: bacterial artificial chromosome

TFR: transferrin

VDBP: vitamin D binding protein

CC16: Clara Cell Secretory protein 16

ClC-5: chloride-proton exchanger 5

NaPi-IIa: sodium- phosphate cotransporter IIa

SGLT2: sodium-glucose cotransporter 2

BSA-DQ: dequenched BSA

EGFR: epidermal growth factor receptor

Cts-D: Cathepsin D

PepA: PepstatinA

rd8: retinal degeneration 8

V-ATPase: vacuolar-type H⁺-ATPase

CI-MPR: cation-independent mannose 6-phosphate receptor

CTNS: cystinosis

CK: creatine kinase