



Year: 2018

Cell type-specific analysis of transcriptome changes in the porcine endometrium on Day 12 of pregnancy

Zeng, Shuqin; Bick, Jochen; Ulbrich, Susanne E; Bauersachs, Stefan

Abstract: **BACKGROUND:** Along with trophoblast elongation (Days 10 to 12), estradiol is secreted in increasing amounts for recognition of pregnancy. Endometrial secretions driven by ovarian progesterone and conceptus signals are essential for conceptus growth and development. Results of transcriptome analyses of whole endometrial tissue samples in the pig indicated the need for cell type-specific endometrial gene expression analysis for a better understanding of transcriptome changes associated with establishment of pregnancy. **RESULTS:** The most distinct transcriptome profile and the majority of differentially expressed genes (DEGs) were identified in luminal epithelium (LE). Many DEGs were found only in the cell type-specific analysis. The functional classification of DEGs identified in specific endometrial cell types revealed various distinct functions and pathways. Genes related to immune activation, estrogen signalling pathway, embryo development, and cell proliferation were upregulated in LE of pregnant gilts. Genes involved in sterol biosynthetic and metabolic processes and extracellular matrix were upregulated in stroma. Genes associated with cell communication such as via exosomes and vesicles were found as differential in LE, glandular epithelium (GE), and stroma (S). **CONCLUSIONS:** This study revealed that conceptus signals induce different transcriptomic regulations in the endometrial compartments/cell types related to their specific function during recognition and establishment of pregnancy.

DOI: <https://doi.org/10.1186/s12864-018-4855-y>

Posted at the Zurich Open Repository and Archive, University of Zurich

ZORA URL: <https://doi.org/10.5167/uzh-152925>

Journal Article

Published Version



The following work is licensed under a Creative Commons: Attribution 4.0 International (CC BY 4.0) License.

Originally published at:

Zeng, Shuqin; Bick, Jochen; Ulbrich, Susanne E; Bauersachs, Stefan (2018). Cell type-specific analysis of transcriptome changes in the porcine endometrium on Day 12 of pregnancy. *BMC Genomics*, 19(1):459.

DOI: <https://doi.org/10.1186/s12864-018-4855-y>

RESEARCH ARTICLE

Open Access



Cell type-specific analysis of transcriptome changes in the porcine endometrium on Day 12 of pregnancy

Shuqin Zeng^{1,2}, Jochen Bick¹, Susanne E. Ulbrich¹ and Stefan Bauersachs^{2*} 

Abstract

Background: Along with trophoblast elongation (Days 10 to 12), estradiol is secreted in increasing amounts for recognition of pregnancy. Endometrial secretions driven by ovarian progesterone and conceptus signals are essential for conceptus growth and development. Results of transcriptome analyses of whole endometrial tissue samples in the pig indicated the need for cell type-specific endometrial gene expression analysis for a better understanding of transcriptome changes associated with establishment of pregnancy.

Results: The most distinct transcriptome profile and the majority of differentially expressed genes (DEGs) were identified in luminal epithelium (LE). Many DEGs were found only in the cell type-specific analysis. The functional classification of DEGs identified in specific endometrial cell types revealed various distinct functions and pathways. Genes related to immune activation, estrogen signaling pathway, embryo development, and cell proliferation were upregulated in LE of pregnant gilts. Genes involved in sterol biosynthetic and metabolic processes and extracellular matrix were upregulated in stroma. Genes associated with cell communication such as via exosomes and vesicles were found as differential in LE, glandular epithelium (GE), and stroma (S).

Conclusions: This study revealed that conceptus signals induce different transcriptomic regulations in the endometrial compartments/cell types related to their specific function during recognition and establishment of pregnancy.

Keywords: Pig, Pregnancy, Estrous cycle, Uterus, Endometrium, Transcriptomics, RNA-Seq

Background

Uterine receptivity to conceptus implantation begins after hatching from the zona pellucida. The embryo pre-contacts with uterine luminal (LE) or superficial glandular (sGE) epithelia; later followed by apposition and adhesion between trophoblast and uterine LE/sGE. Finally, limited or extensive endometrial invasion (depending on species and type of placenta) initiates placental development. These peri-implantation events are prerequisites for fetal and placental growth and development through the remainder of pregnancy [1, 2]. During the conception cycle, the porcine embryo undergoes the first cell divisions in the oviduct and arrives in the uterus in

the 4 cells stage [3]. After hatching from the zona pellucida on Day 7, the porcine conceptus changes rapidly from spherical to tubular, and then filamentous form between Days 10 and 12 after ovulation [4]. This is accompanied by differentiation of trophoblast cells making the conceptus ready for implantation [5]. Maternal recognition and establishment of pregnancy in pigs requires a biphasic pattern of estrogen secretion by the conceptus, mainly 17 β -estradiol (E₂), increased between Days 11–12 and Day 15 and Days 25–30, respectively [6]. Previous studies also indicated that the porcine embryo exerts local effects on endometrial structures and functional parameters as well [7, 8]. The effects on the endometrial luminal epithelium structure, uterine blood flow [9], histotroph production and changes in prostaglandin F_{2 α} (PGF_{2a}) release are mainly caused by E₂ through directly or indirectly mediating the release of other substances [10]. Influences on cellular organization,

* Correspondence: stefan.bauersachs@uzh.ch

²Department for Farm Animals, University of Zurich, Genetics and Functional Genomics, Clinic of Reproductive Medicine, Zurich, Switzerland
Full list of author information is available at the end of the article



composition, and function derived from E_2 effects is thought to facilitate in turn conceptus development and later placentation [11]. The pro-inflammatory cytokine interleukin one beta 2 (IL1B2) which expression is dramatically increased only in expanding porcine conceptuses (Day 11–12), is proposed to contribute to embryo implantation [12]. Interleukin one beta 2 binds to the interleukin 1 receptor type 2 (IL1R2) on the epithelial surface which can activate the nuclear factor kappa-B (NFkB) system [13], followed by cytokines (tumor necrosis factor (TNF α), Interleukins (ILs), interleukin 6 family cytokine (LIF), and colony stimulating factor 2 (GMCSF)), chemokines (C-C motif chemokine ligand 5 (RANTES)), and the PTGS2 signaling pathway [14].

The embryo-endometrial cross-talk in the pig has evolved as a critical mechanism responding initially to the hormonal trigger in order to achieve receptivity and then amplify the decision under embryonic signals for pregnancy. Thus, the endometrium's receptive ability and the prevention of luteolysis is very important during this critical period [5]. So far, a number of studies have been performed to analyze differential gene expression in porcine endometrium in response to embryonic signals starting from blastocyst stage [15] until placentation [16–19]. In our previous studies we investigated differential gene expression in porcine endometrium on Days 12 and 14 of pregnancy by the use of RNA-sequencing (RNA-seq) and identified numerous DEGs in response to the presence of conceptuses [18, 19]. Previous studies in the mouse conducted with Laser capture microdissection (LCM), a commonly used method to isolate different cell types from whole tissues or organs with high purity [20, 21], and microarrays indicated cell type-specific differences in transcriptome changes between LE and GE in response to pregnancy and revealed that different cell types act differentially and synergistically to permit blastocyst implantation [22]. Field et al. studied the immune-related gene expression in endometrial epithelial and stromal cells by LCM and microarrays, and found that the expression of factors involved in immunomodulation/endometrial remodeling was different between the epithelial and stromal compartments in a temporal manner [23]. Although the mouse is a good model to study the uterine transcriptome, the results can not be directly transferred to other species. Previously, Brooks et al. focused on the ovine cell-specific uterine transcriptome by the use of LCM and found a number of genes that contribute to cell proliferation, migration, attachment, and differentiation in ovine uterine LE [24]. Although a number of studies using LCM to dissect the endometrial cell types have been performed, none of them compared more than two cell types and did a comparison to the complete tissue sample. Since the knowledge about the cell-type specific gene

expression is rather limited in porcine endometrium, the aim of the present study was to characterize the complex transcriptome changes in different endometrial cell types during the preimplantation period for improving our understanding of localization of endometrial gene expression regulation in context of recognition of pregnancy. To do this analysis in a transcriptome-wide manner, RNA-seq was performed for samples derived from luminal epithelium (LE), glandular epithelium (GE), and stroma (S) isolated by the use of LCM and compared to a corresponding data set for complete endometrial tissue samples.

Methods

Isolation of target cells

The animal experiment and sample collection is described in Samborski et al. [18]. Treatments of gilts were performed in accordance with the regulations of the local authorities (District Government of Upper Bavaria, Veterinary Office). The performed standard procedures/treatments in animal breeding were all in accordance with the International Guiding Principles for Biomedical Research Involving Animals, as proposed by the Society for the Study of Reproduction, with the European Convention on Animal Experimentation and with the German Animal Welfare Act. The animals were housed at farm facilities of the LMU Munich (Chair for Molecular Animal Breeding and Biotechnology) and slaughtered at the slaughterhouse of the Institute for Animal Breeding, Bavarian State Research Center for Agriculture, Poing, Germany.

A number of 8 prepuberal gilts were bought from a livestock trader (crossbreeds of German Landrace and Piétrain) and received a single injection of 750 IU PMSG (Intergonan[®], MSD Animal Health Innovation GmbH, Schwabenheim, Germany) and 72 h later 750 IU hCG (Ovogest[®], MSD Animal Health Innovation GmbH) to synchronize ovulation. Gilts of the “pregnant” group ($n = 4$) were inseminated twice (24 h and 36 h after hCG) with a standard dose of German Landrace semen whereas gilts of the “non-pregnant” control group ($n = 4$) were inseminated with the supernatant of centrifuged (10 min, 3000 rpm) semen of the same boar. Gilts were slaughtered on Day 12 after insemination. Endometrial samples (medial part of the uterine horns) were collected and snap-frozen in liquid nitrogen and stored at -80° until preparation for LCM. Pregnancy was confirmed by the presence of filamentous conceptuses in the flush of the uterine horns. Briefly, frozen endometrium samples were cut in 10 μ m thick sections with a Leica CM1950 clinical cryostat (Leica Biosystems, Germany), mounted onto membrane slides (MembraneSlide NF 1.0 PEN, Zeiss, Germany), and stained using a modified, rapid Cresyl violet staining protocol to identify LE, GE, and stromal cells.

Briefly, the slides were first fixed with 70% ethanol (Sigma), and quickly washed in 50% ethanol. Cresyl violet was used to stain for 3 min, and then the stained slides were washed again with 50, 70, 100% ethanol, respectively (dip slides two/three times into each solution). Finally, the slides were dried at room temperature. All solutions were prepared with RNase-free water. The target cells from the sections were captured using a LCM Zeiss 200 M (inverse) microscope (Zeiss PALM Microsystems, Germany). When satisfactory cutting was achieved, the target tissue was lifted to the LCM cap (AdhesiveCap 200 clear, Zeiss, Germany) and 50 μ l extraction buffer was used to incubate the LCM samples at 42 °C for 30 min to lyse the cells.

Isolation of RNA, quality control, and RNA-sequencing

Total RNA was isolated from luminal epithelium, glandular epithelium, and stromal samples of each pig using the PicoPure RNA Isolation Kit (Applied Biosystems™, Vilnius, Lithuania) following the manufacturer's instructions. Integrity and quantity of the RNA were assessed using the Agilent RNA 6000 Pico assay on the Agilent 2100 Bioanalyzer (Agilent Technologies, Waldbronn, Germany). The quality of the isolated total RNA extracted from LE, GE, and S were ranging from 6.6 to 9.4 (RNA integrity number, RIN). Most of the samples had a RIN around 8 were used to prepare a total of 24 RNA-seq libraries for biological replicates per group ($n = 4$ gilts) and cell type.

The Ovation SoLo Single Cell RNA-Seq System (NuGen Technologies, San Carlos, USA) was used for preparing RNA-Seq libraries starting from 500 pg of total RNA (corresponding to no more than 50 cells) according to the manufacturer's recommendations. The number of PCR cycles for the first amplification step (determined by qPCR according to the manual) was between 15 and 20, for most of the samples 17. The 24 libraries were prepared from each individual sample for the three cell types of each replicate of both experimental groups. Then, all individual barcoded libraries were pooled for sequencing on two lanes of a single-read flow cell on an Illumina HiSeq 2500 instrument. Sequencing and demultiplexing were performed at the Functional Genomics Center Zurich (FGCZ).

Bioinformatics and data analysis

The obtained sequence reads (Fastq files) were analyzed with a locally installed version of Galaxy [25]. The adapter sequence was clipped (for shorter fragments where sequencing runs into the adapter) and 5 bp were removed from the start of the reads. Sequences were mapped with Hisat2 (Sscrofa 11.1) from NCBI (ftp://ftp.ncbi.nih.gov/genomes/Sus_scrofa/GFF) and filtered by CPM cutoff after removing the PCR duplicates with

NUGEN nudup based on the 8 random bases contained in the barcode adapter. The resulting read count table was used for statistical analysis in EdgeR to identify differentially expressed genes (DEGs) [26]. With a false discovery rate (FDR) of < 1% for LE and using its corresponding p value of 0.0021 as a cut-off for GE, stroma, and complete tissue, hierarchical cluster analysis was performed for DEGs in MultiExperiment Viewer (MeV). Gene ontology (GO) and pathway analysis was conducted by using the online tool ToppCluster and the Database for Annotation, Visualization, and Integrated Discovery (DAVID) [27]. The data set from complete endometrial tissue samples was analyzed with the same pipeline except the step for removal of PCR duplicates. Raw FASTQ files were deposited at National Center for Biotechnology Information (NCBI) Gene Expression Omnibus (GSE109539).

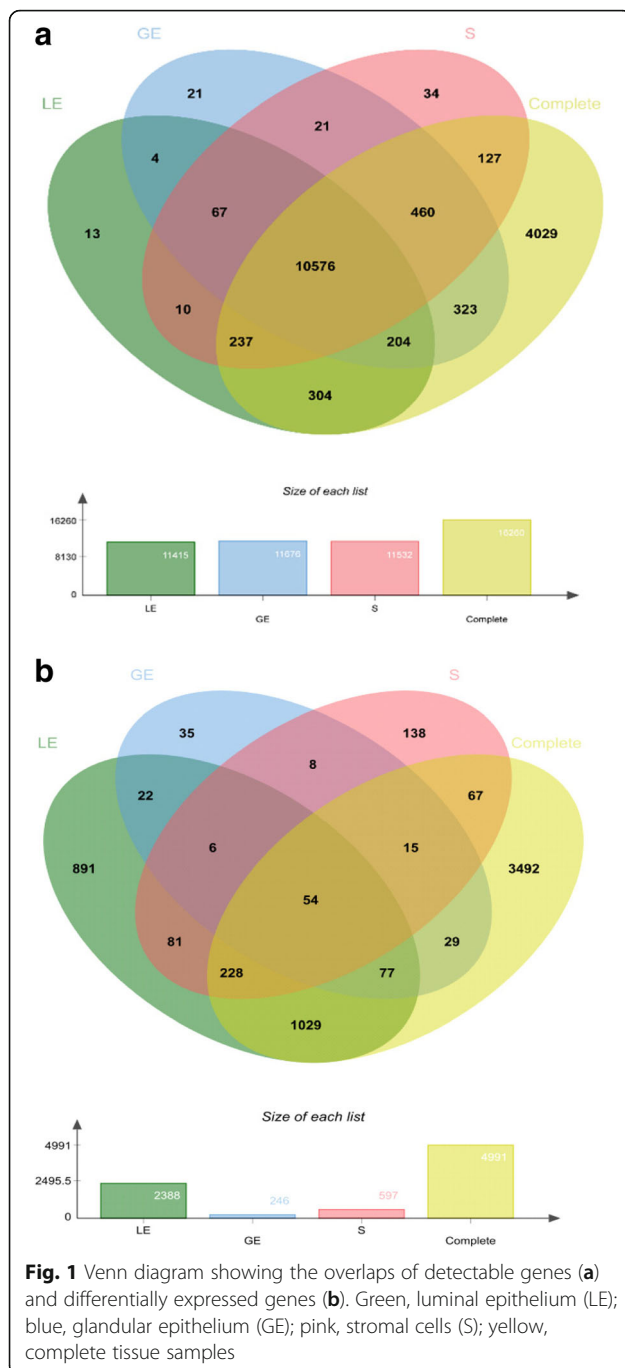
Results

Transcriptome sequencing of samples collected by LCM

Cells from uterine LE, GE, and S were isolated from endometria collected from Day 12 pregnant gilts ($n = 4$) and Day 12 nonpregnant cyclic gilts (control, $n = 4$) using LCM. Although the isolated stromal areas comprise a mix of fibroblasts and other cell types, mainly different immune cells, stroma (S) is in the following referred to as a "cell type". A total of 458.1 million raw reads were obtained from the two experimental groups; 205.4 and 252.7 million in pregnant and control groups, respectively. After low-quality reads were filtered out and PCR duplicates were removed, a total of 259.3 million clean reads (116.1 in pregnant group, 143.2 million in control group) were selected for further analyses (Additional file 1: Table S1).

Detected genes and DEGs in comparison of complete tissue and LCM samples

The obtained LCM RNA-seq expression data were compared to data from complete endometrium tissue samples collected from Day 12 pregnant gilts and corresponding cyclic controls (raw data from Samborski et al. [18]). A total of 12,401 genes were detectable with the LCM method. For the individual endometrial compartments these were 11,415, 11,676, and 11,532 genes (LE, GE, and S, respectively). Clearly more genes (16260) were detectable in complete endometrial tissue samples. A high number of genes (10576) could be detected in the three LCM sample types and in complete tissue (Fig. 1a). Only 170 genes were detectable in the LCM samples but not in the complete sample. The numbers of genes putatively showing cell type-specific expression were 317, 344, and 161, for LE, GE, and stroma, respectively (expression detected in the corresponding cell type and for most of the genes also in



complete tissue). Eleven solute carrier family members (*SLCs*) and 5 genes coding for transmembrane protein (*TMEMs*) were only detected in LE. In addition, 10 coiled-coil domain containing (*CCDC*) mRNAs were only found in GE. These genes detected only in one cell type were mostly expressed at rather low levels (data not shown).

The analysis of differential gene expression was performed between the pregnant and the nonpregnant group for each cell type and also for complete tissue

samples. More DEGs were found for LE when compared with GE and S, i.e., 2388, 246, and 597 DEGs, respectively (Fig. 1b, Additional file 2: Table S2). Almost 5000 DEGs were obtained for the complete tissue samples in comparison of pregnant and nonpregnant gilts (Fig. 1b, Additional file 2: Table S2). Many of the DEGs, mainly for LE with 1920 DEGs, were differentially expressed (DE) in one cell type but not in the other cell types or in complete tissue (Fig. 1b, sector overlap LE with Complete and sector LE only). Also, for GE and S, many DEGs were specifically DE in these cell types (Fig. 1b). About half of all genes found to be DE in a cell type-specific way were not found as DE in the complete tissue sample.

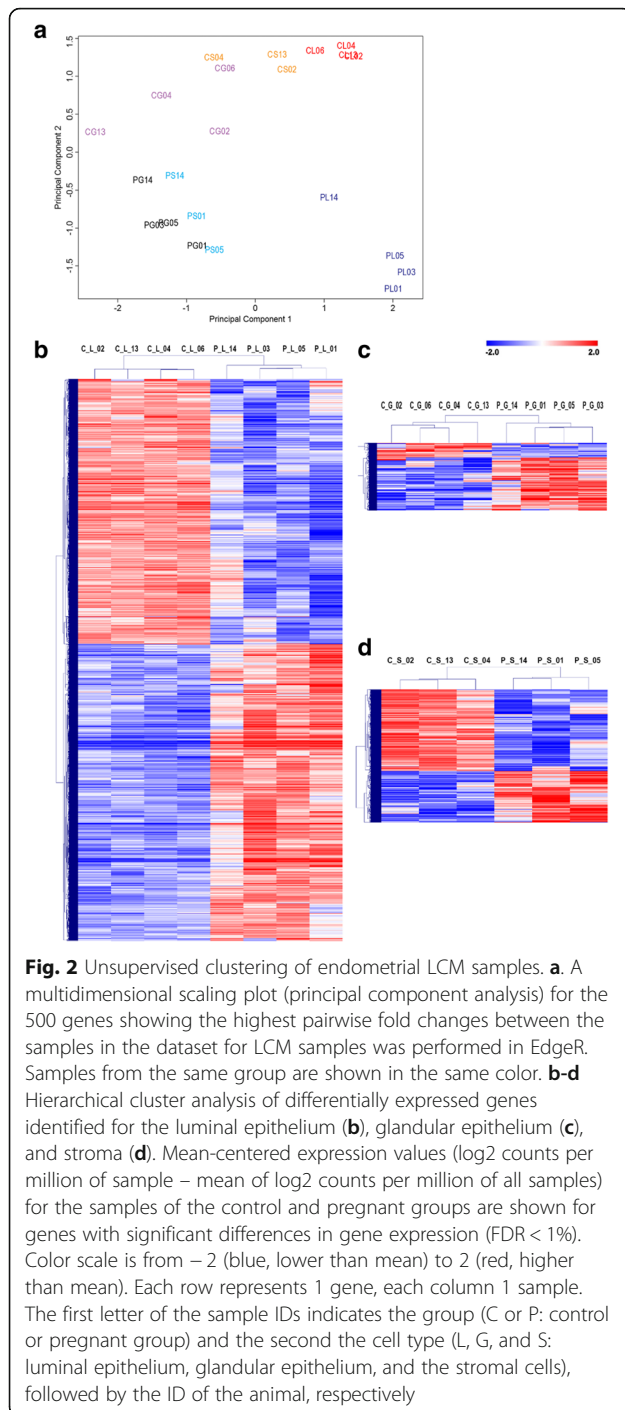
Unsupervised clustering of samples by multiple dimension scaling plots

Multiple dimension scaling (MDS) plot analysis revealed for principal component 1 a grouping according to the individual cell types, particularly for the LE in the pregnant state (Fig. 2a). The GE and S samples derived from pregnant endometria were more similar to each other than the corresponding samples derived from the cyclic group. In the second dimension (principal component 2), a clear separation of pregnant and control samples was mainly found for LE, but also for GE and S (Fig. 2a). The lowest distance between the pregnant and cyclic control group was observed for GE corresponding to the lowest number of DEGs.

Furthermore, hierarchical cluster analysis was performed for the DEGs identified for each cell type (Figs. 2b, c, d). With respect to higher or lower expression in pregnant compared to cyclic endometrium, 1260 up-regulated and 1128 down-regulated, 193 up-regulated and 53 down-regulated, and 231 up-regulated and 366 down-regulated DEGs were identified in LE, GE and S, respectively (Additional file 2: Table S2).

Functional category analysis of DEGs

An overview of the network illustrating functional classification of the obtained DEGs is shown in Fig. 3. All DEGs of LCM were analyzed with ToppCluster tool for Gene Ontology (GO) and pathway analysis. Selected specifically enriched functional categories are shown for biological process (BP), molecular function (MF), cellular component (CC), and pathways for LE, GE, and S, respectively. The majority of overrepresented categories such as adhesion junction, cell motility, embryo development and MAPK cascade were obtained for LE. Cellular homeostasis, metal transport, and steroid metabolic process were found for stroma. Peptidase inhibitor activity and membrane transporter activity were enriched for GE samples. A systematic comparison of overrepresented GO categories and KEGG pathways between the



endometrial cell types and complete endometria was performed with the DAVID tool. At a FDR of 1%, 47 overrepresented functional categories and KEGG pathways were found in total. For selected categories, the FDR and the fold enrichment obtained for the three cell types and complete endometria was used to generate a heatmap in order to illustrate specific and common overrepresented categories and pathways (Figs. 4a and b). Based on this

comparison, DEGs were enriched for the functional categories “extracellular exosome” and “extracellular vesicle” in all three cell types as well as complete tissue. Specific enrichment of DEGs in LE was found for categories related to cell communication and signaling (e.g. estrogen signaling), immune response, epithelium development, cell proliferation, cytoskeleton, cell junction and migration. In contrast, DEGs found in stroma were enriched for functional categories and pathways involved in sterol and steroid biosynthesis and metabolism, inflammatory response, extracellular matrix, and ion transport. Particular enrichment for DEGs in complete endometria was identified for categories related to cell division and blood vessel morphogenesis. For GE, the number of enriched terms and pathways was generally very low due to the low number of DEGs. More detailed information about the comparison of overrepresented categories and pathways and the assigned DEGs for specific cell types and complete tissue is shown in Additional file 3: Table S3.

Genes differentially expressed in specific cell types or in complete tissue

First, the \log_2 fold changes (FC) (pregnant/control) of the top 10 up- and downregulated DEGs for each cell type and complete endometrial tissue were compared (Fig. 5, Additional file 4: Table S4). Genes such as multimerin 1 (*MMR1*), prospero homeobox 1 (*PROX1*), sodium voltage-gated channel alpha subunit 3 (*SCN3A*), synuclein alpha (*SNCA*), sclerostin domain containing 1 (*SOSTDC1*), *LOC102165712* were only DE in stroma. The genes neuropeptide Y (*NPY*), osteocrin (*OSTN*), hemoglobin subunit epsilon 1 (*HBE1*), *LOC106510525*, *LOC110257993* could only be found as DE in complete tissue. Some members of the S100 calcium binding protein A family were highly upregulated in all three cell types, except S100 calcium binding protein A7 (*S100A7*) which was specifically upregulated in LE. Furthermore, serpin family B members 2 and 7 were highly upregulated in all cell types whereas serpin family B member 11 (*SERPINB11*) in LE only (not detectable in GE and stroma).

Genes were defined as specifically DE if they were contained in the Venn diagram in the not overlapping sectors of each cell type and the sector for the overlap of one cell type with the DEGs found in the complete tissue samples (Fig. 1b). Furthermore, genes were analyzed that were DE only in the complete tissue samples, which may well contain genes DE in cell types not present in the LCM samples. Functional annotation results (overrepresentation analysis) for genes only DE in certain cell types or complete tissue are shown in Additional file 5: Table S5. The main overrepresented functional categories for the genes

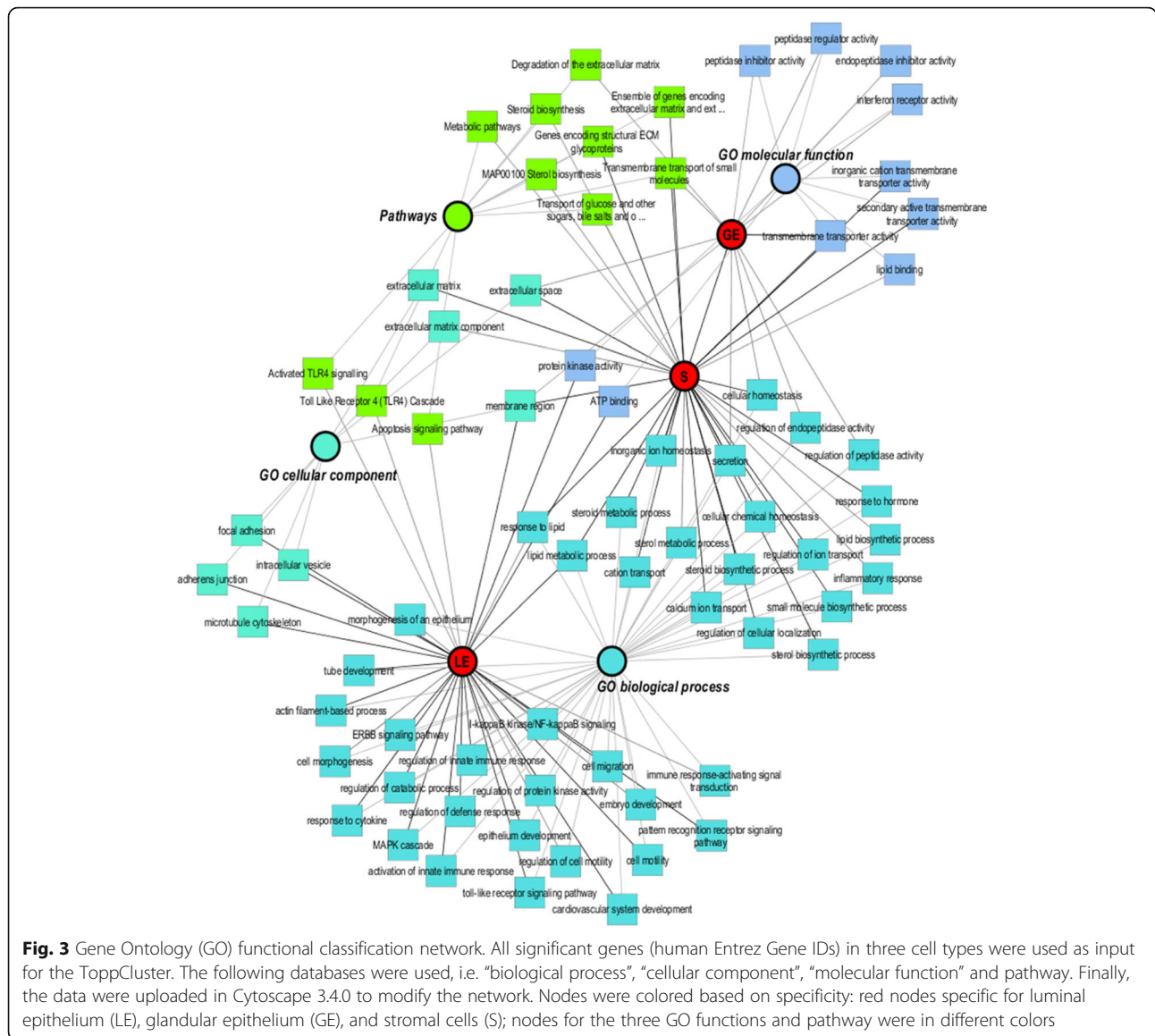
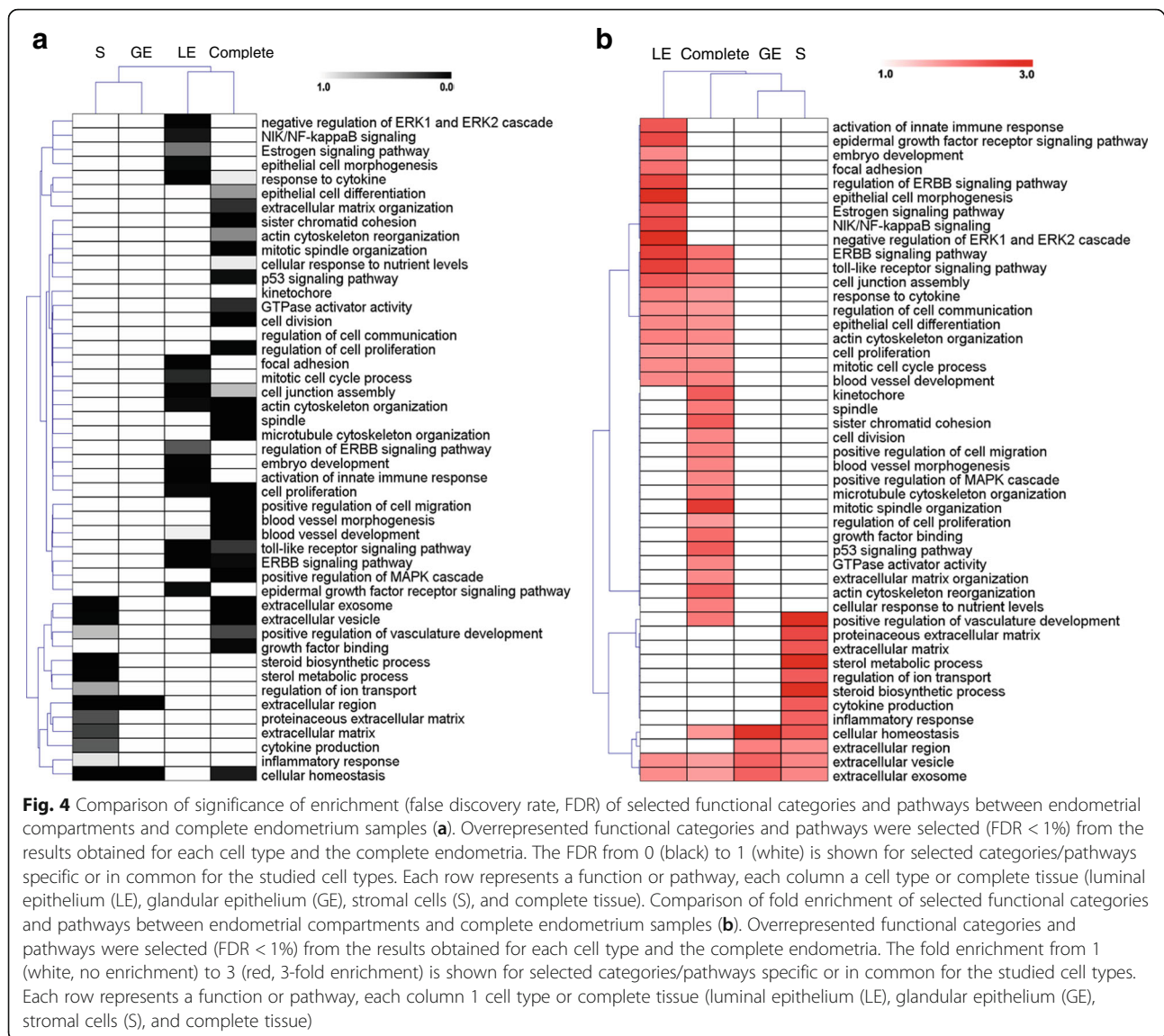


Fig. 3 Gene Ontology (GO) functional classification network. All significant genes (human Entrez Gene IDs) in three cell types were used as input for the ToppCluster. The following databases were used, i.e. “biological process”, “cellular component”, “molecular function” and pathway. Finally, the data were uploaded in Cytoscape 3.4.0 to modify the network. Nodes were colored based on specificity: red nodes specific for luminal epithelium (LE), glandular epithelium (GE), and stromal cells (S); nodes for the three GO functions and pathway were in different colors

specifically upregulated in LE were related to “phosphorus metabolic process”, “ATP binding”, “signal transduction”, “cell adhesion/junction”, “cell migration”, “extracellular vesicle”, “amide and peptide biosynthetic process”, “protein transport”, “cytoskeleton organization”, “immune response”, and “cell cycle”. The genes specifically downregulated in LE were involved in “metal ion binding”, “cell morphogenesis”, “epithelium development”, “microtubule cytoskeleton”, and “DNA repair”. Only a few overrepresented functional categories were found for GE-specific DEGs, “endoplasmic reticulum” and “extracellular vesicle” for upregulated genes. Specific DEGs for stromal regions were enriched for “ion transport”, “cytoskeleton organization”, “cell morphogenesis”, and “blood vessel

development” (upregulated genes) and “cellular lipid metabolic process”, “steroid biosynthetic process”, “endoplasmic reticulum”, and “metal ion binding” (downregulated genes). Highly significant enrichment was obtained for many functional categories in the analysis of upregulated genes specific for complete tissue. The main processes and functions were “cell cycle”, “cell proliferation”, “vasculature or blood vessel development”, “cell motility”, “cell death”, “proteolysis”, “signal transduction”, “cell adhesion”, “leukocyte activation”, and “extracellular vesicle”. For the downregulated genes, specific for complete tissue, overrepresentation was found for “mitochondrion”, “steroid dehydrogenase activity”, “ciliary part”, “cilium organization”, and a variety of metabolic processes.



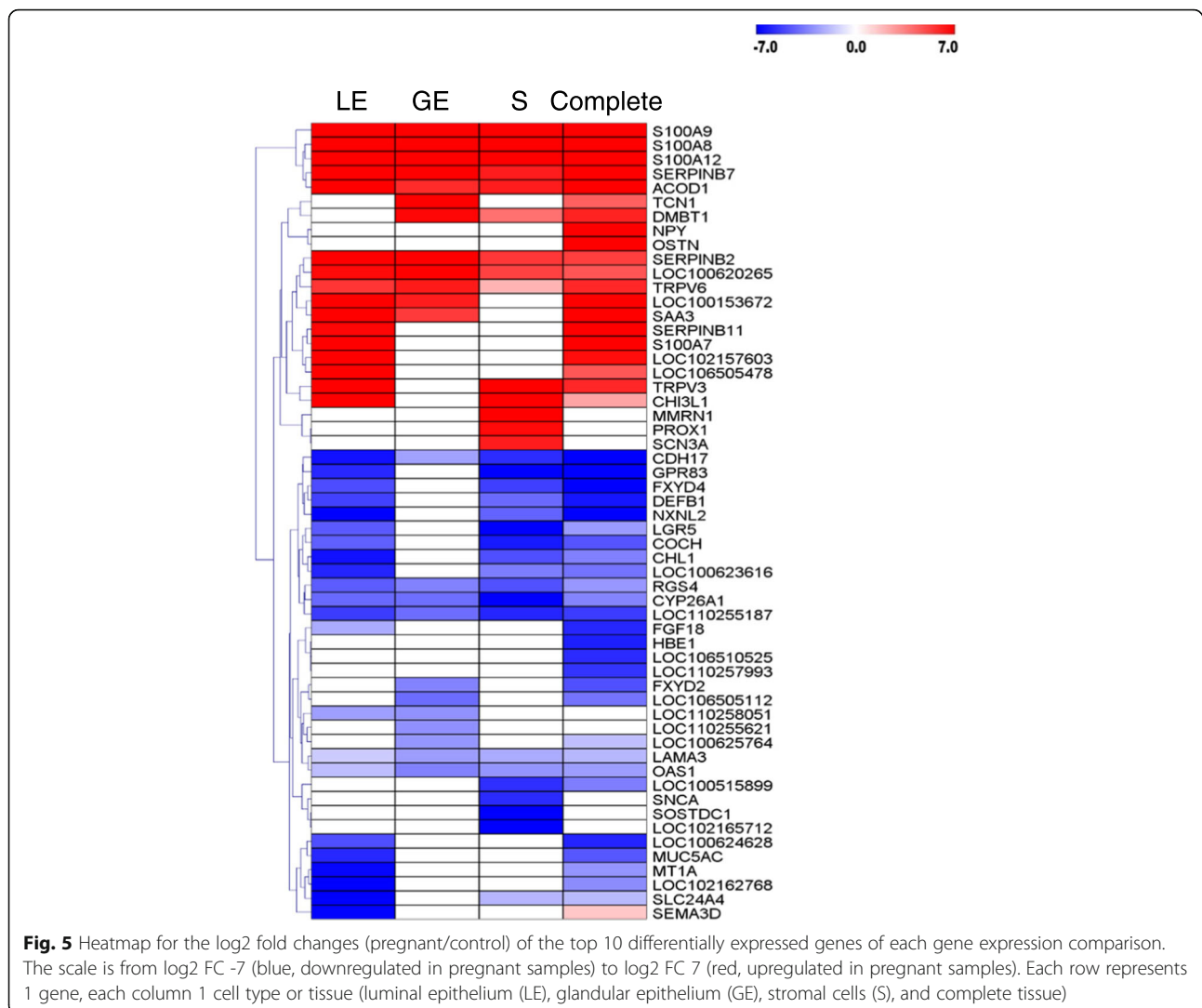
DEGs involved in estrogen signaling, prostaglandin metabolism and signaling, and other selected pathways

A number of 249 DEGs assigned to a selection of particularly interesting pathways and processes, e.g., estrogen signaling, steroid hormone biosynthesis, prostaglandin (PG) metabolism, signaling and transport, interleukin-1 (IL1) and interferon (IFN) type I signaling are shown in Additional file 6: Table S6. A total number of 122 DEGs including 81 up- and 41 down-regulated genes were found as DE in LE. For the GE, 16 were up- and 3 down-regulated. In addition, a number of 20 genes were up-regulated and 22 genes were down-regulated in stroma. For complete endometrial samples, 117 assigned genes were up-regulated and 69 were down-regulated. For some of the pathways, functionally related genes showed distinct

localization of gene expression regulation and in part the same direction of regulation (i.e., collective up- or down-regulation).

Comparison of the LCM RNA-seq results to data from real-time RT-PCR and published localization studies

Overall, the overlap of the DEGs between the LCM samples and the complete tissue samples (dataset from Samborski et al. [18]) showed the reliability of the LCM RNA-seq data. Furthermore, a comparison to results of quantitative PCR for 25 selected genes from Samborski et al. [18] and other studies was performed (Table 1). Furthermore, the localization of endometrial gene expression of 20 selected genes observed by LCM RNA-seq was compared to results from in situ hybridization (ISH) and immunohistochemistry (IHC)



(Table 2). Both comparisons showed very good agreement and in addition the superior sensitivity in comparison to ISH and IHC.

Discussion

The present study implemented laser capture microdissection (LCM) to isolate endometrial LE, GE, and stroma from the porcine uterus with the aim of uncovering important cell-specific gene expression regulation, which is masked in the transcriptome analysis of whole endometrium samples due to the complex cell type composition of this mucosal tissue. Overall, the obtained results and the clear sample clustering based on the RNA-seq data generated by this approach agreed very well with our previous studies utilizing RNA-seq of complete tissue samples and the confirmation of selected DEGs by real-time RT-PCR [18, 19]. Furthermore, a comparison to published results for localization of expression of selected genes in porcine endometrium

revealed good agreement and showed higher sensitivity of the LCM RNA-seq approach compared to ISH and IHC. In comparison to the data derived from complete endometrial tissue, less detectable genes were found for the certain cell types/compartments. This may be attributed to the fact that the endometrial tissue has a complex and dynamic cellular composition, which includes LE, GE, fibroblasts, endothelial cells, pericytes, and various immune cells. However, the number of more than 11,500 detectable genes obtained from the analysis of the LCM samples is in the expected range of transcribed genes for the analysis of an individual cell type.

The results for the LCM samples revealed that there was a clear difference in gene expression between non-pregnant and pregnant samples, particularly for the LE. This indicates that the main effects of the conceptus signaling on endometrial gene expression are localized to the luminal epithelium. Furthermore, more than half of the genes DE in LCM samples were not found as

Table 1 Comparison of RNA-seq and qPCR data

Scs gene symbol	Scs Entrez Gene ID	Hsa gene symbol	Hsa gene description	log ₂ FC P/C		P-value*		qPCR		PubMed ID
				RNA-seq	qPCR	RNA-seq	qPCR	RNA-seq	qPCR	
<i>ABCC1</i>	733,619	<i>ABCC1</i>	ATP binding cassette subfamily C member 1	3.5	1.4	1.1	2.4	1.6	-	27764917
<i>LOC100738425</i>	100,738,425	<i>ABCC4</i>	multidrug resistance-associated protein 4	nd	2.9	nd	2.2	2.1	-	24695625
<i>ABCC9</i>	100,127,449	<i>ABCC9</i>	ATP binding cassette subfamily C member 9	1.2	0.0	0.6	2.2	1.8	-	27764917
<i>AKR1B1</i>	396,816	<i>AKR1B1</i>	aldo-keto reductase family 1 member B	5.2	5.2	2.2	5.1	5.8	-	24695626
<i>BAALC</i>	100,170,128	<i>BAALC</i>	brain and acute leukemia, cytoplasmic	nd	nd	nd	-5.0	-5.8	-	24174570
<i>LOC100157834</i>	100,157,834	<i>CDH17</i>	cadherin 17, LI cadherin (liver-intestine)	-6.5	-2.6	-5.8	-8.3	-6.3	-	24174570
<i>CLDN1</i>	100,625,166	<i>CLDN1</i>	claudin 1	5.0	nd	4.2	3.4	1.8	-	25123632
<i>PBD-2</i>	404,699	<i>DEFB1</i>	defensin, beta 1	-5.2	-1.7	-4.1	-6.4	-5.9	-3.4	24174570
<i>FGF9</i>	396,717	<i>FGF9</i>	fibroblast growth factor 9 (glia-activating factor)	2.2	nd	nd	3.0	3.7	3.0	24174570
<i>FGFR3</i>	100,514,115	<i>FGFR3</i>	fibroblast growth factor receptor 3	-1.2	-0.1	-1.1	-2.3	-	0.6	20393170
<i>LOC100511475</i>	100,511,475	<i>FXYD4</i>	FXYD domain containing ion transport regulator 4	-4.9	nd	-5.2	-7.4	-7.5	-	24174570
<i>LOC100513220</i>	100,513,220	<i>GPR83</i>	G protein-coupled receptor 83	-5.9	nd	-7.5	-7.8	-4.0	-	24174570
<i>HPGD</i>	100,156,186	<i>HPGD</i>	hydroxyprostaglandin dehydrogenase 15-(NAD)	-3.8	-1.4	-3.6	-3.0	-2.7	-	24695626
<i>LOC100739374</i>	100,739,374	<i>IL24</i>	interleukin 24	-2.8	-1.4	-	-4.6	-5.2	-5.3	24174570
<i>IRF1</i>	396,611	<i>IRF1</i>	interferon regulatory factor 1	0.6	-0.1	0.4	0.4	0.5	2.9	24174570
<i>IRG1</i>	100,524,951	<i>IRG1</i>	immunoresponsive 1 homolog (mouse)	10.3	5.8	6.2	9.9	8.0	-	24174570
<i>OSTN</i>	100,049,691	<i>OSTN</i>	osteocitrin	nd	nd	nd	10.3	12.4	-	24174570
<i>S100A9</i>	100,127,489	<i>S100A9</i>	S100 calcium binding protein A9	12.4	11.5	11.3	10.4	10.6	9.2	24174570

Table 1 Comparison of RNA-seq and qPCR data (Continued)

Ssc gene symbol	Ssc Entrez Gene ID	Hsa gene symbol	Hsa gene description	log ₂ FC P/C		P-value*								
				RNA-seq	qPCR	RNA-seq	qPCR							
SERP1NB7	100,152,588	SERP1NB7	8710 serpin peptidase inhibitor, clade B, member 7	10.4	7.9	6.2	10.3	8.9	5.4	<	<	<	0.018	24174570
SLCO2A1	100,144,510	SLCO2A1	6578 solute carrier organic anion transporter family member 2A1	1.0	0.4	2.3	0.5	3.0	-	0.011	0.960	<	0.053	24695625
SLCO4C1	100,737,557	SLCO4C1	353,189 solute carrier organic anion transporter family member 4C1	1.6	0.2	1.3	2.3	2.6	-	0.007	0.978	0.174	<	27764917
SLCO5A1	100,157,250	SLCO5A1	81,796 solute carrier organic anion transporter family member 5A1	8.4	4.9	5.9	6.4	9.2	-	<	<	<	<	27764917
SPP1	397,087	SPP1	6696 secreted phosphoprotein 1	4.1	1.6	3.2	2.4	2.5	3.2	<	0.005	<	<	24174570
LOC100738308	100,738,308	STAT1	6772 signal transducer and activator of transcription 1, 91 kDa	1.6	0.2	0.8	1.4	1.2	2.3	<	0.562	0.066	<	24174570
STC1	100,125,345	STC1	6781 stanniocalcin 1	-2.9	-1.0	-2.9	1.9	2.5	2.0	<	0.384	<	<	24174570

Ssc: *Sus scrofa*; Hsa: *Homo sapiens*; P/C: pregnant vs. control; *for RNA-seq adjusted p-values; nd: not detectable

Table 2 Comparison of LCM RNA-seq results for endometrial localization of gene expression to results from in situ hybridization and immunohistochemistry

Gene	LE	GE	S	Complete	Other studies	Technique	PubMed ID
<i>AKR1B1</i>	5.2	5.2	2.2	5.1	LE days 12/13 P	ISH	17640989, 24695626
<i>HPGD</i>	-3.8	-1.4	-3.6	-3.0	expression in LE D12C	ISH	24695626
<i>EGFR</i>	-0.7	d	d	-1.0	low abundance in LE/GE D12	ISH	24012778
<i>FGF7</i>	2.3	1.7	d	2.1	expression in LE/GE D12P	ISH	10819782
<i>FGF9</i>	2.2	nd	nd	3.0	expression in GE D14P	IHC	20393170
<i>FGFR2</i>	d	d	d	d	expression in LE/GE D12	ISH	28395342
<i>ABCC1</i>	3.5	d	d	2.4	expression in LE/GE D12P (weak)	ISH	27764917
<i>LOC100738425 (ABCC4)</i>	nd	2.9	nd	2.2	expression in LE/GE D12P	ISH/IHC	24695625
<i>ABCC9</i>	1.2	d	d	2.2	expression in LE/GE D12P (weak)	ISH	27764917
<i>SLC24A4</i>	-8.2	d	-2.0	-1.9	nd in LE D12P	ISH	24472379
<i>SLCO2A1</i>	1.0	d	2.3	d	expression in LE/BV D12P	ISH	24695625
<i>SLCO4C1</i>	1.6	d	d	2.3	nd, ISH too weak, qPCR D12P up	ISH	27764917
<i>SLCO5A1</i>	8.4	4.9	5.9	6.4	nd, ISH too weak, qPCR only D12 P	ISH	27764917
<i>GJA1</i>	2.0	d	1.3	1.3	stroma, BV	IHC	9669753
<i>GJB1</i>	nd	nd	nd	-1.3	nd in LE	IHC	9669753
<i>GJB2</i>	nd	nd	nd	nd	nd in LE	IHC	9669753
<i>IRF2</i>	1.3	d	d	1.0	cycle: low all cell types, from D12P up in LE	ISH	17475929
<i>S100G</i>	2.9	d	d	3.6	expression in LE D12P	ISH	19641180
<i>STAT2</i>	-0.8	d	d	d	cycle: low in all cell types, after D12P: up in stroma	ISH	17475929
<i>TRPV6</i>	5.6	6.3	2.1	5.9	strong expression in LE, weak in GE D12P	ISH	19641180

Values are log₂ FC; d: expression detected; nd: expression not detectable; LE: luminal epithelium; GE: glandular epithelium; BV: blood vessels; P: pregnant; C: cyclic; ISH: in situ hybridization; IHC: immunohistochemistry

differential in complete tissue, showing that analysis of the whole endometrium is partially missing cell type-specific gene regulation. Some genes not appearing as DE in whole endometria can even be expressed both in LE and GE or stroma but with opposite expression regulation, which eventually results in similar expression between pregnant and non-pregnant state in complete tissue.

Genes preferentially differentially expressed in endometrial cell types are related to specific functions

For the genes specifically DE in LE overrepresented functional categories were mainly related to signaling, immune functions, and cell adhesion. This is probably reflecting the various responses to the signals derived from the elongating conceptus mainly affecting the LE. Genes upregulated in LE and assigned, e.g., to “protein phosphorylation” and other categories related to signaling could be induced by conceptus-derived interleukin 1 beta which has been suggested to play an important role in development of the LE by stimulating cell proliferation via activation of the ERK1/2 and P38 MAPK cell signaling cascades [28]. Furthermore, endometrial- and/or conceptus derived epidermal growth factor (EGF) has been shown to stimulate phosphorylation of ERK1/2

MAPK in porcine LE cells and proposed to regulate development of the peri-implantation uterine LE at the fetal-maternal interface [29].

For stroma, DEGs, related to “vasculature development”, “ion transport”, “cell development”, were overrepresented. Angiopoietin-2 (*ANGPT2*) mRNA was detectable in all three cell types but only upregulated in stroma and complete endometria in this study. ANGPTs comprise a second key group of vascular regulators in the endometrium with interactions with the vascular endothelial growth factor (VEGF) system and appear to play a major role in the regulation of blood vessel growth, maturation, and regression [30, 31]. In human endometrium, *ANGPT2* expression was mainly localized to the glandular epithelium and endothelium [32]. While only 11 genes upregulated in stroma (3.8-fold enrichment) were assigned to “vasculature development”, 116 genes upregulated in complete endometria (2.4-fold enrichment) were assigned, showing that most of the genes involved in this process are regulated in endometrial regions rich in blood vessels which were not collected for the stroma samples. These genes included several angiogenesis-related genes such as *VEGFC*, *VEGFD*, and VEGF receptors 1, 2, and 3 as well as angiopoietin receptors, and a number of endothelial cell markers. The

high enrichment scores obtained for “blood vessel development” and related categories is in concordance with the finding that conceptus estrogen can increase endometrial vascular permeability [33].

The functional category “ion transmembrane transport” showed higher enrichment for genes upregulated in stroma compared to genes upregulated in LE of pregnant group. However, many more genes were assigned to this category for genes DE in LE. In LE and stroma calcium transporter genes had lower expression in samples from pregnant gilts, particularly solute carrier family 24 member 4 (*SLC24A4*) with a log₂ FC of -8.2. This is in agreement with a recent study where *SLC24A4* mRNA was detectable in LE cells during the estrous cycle by in situ hybridization, but undetectable during early pregnancy including Day 12 [34]. In addition, the mRNAs for the calcium ion channel protein TRPV6 and the intracellular calcium-regulatory molecule S100G were upregulated in all three cell types but highest in LE of pregnant gilts which is in agreement with results from quantitative PCR and localization by ISH of a previous study [35].

Altogether, the analysis of genes specifically DE in endometrial compartments showed differential local responses to the conceptus-derived signals. Selected functional categories important for maternal recognition of pregnancy (MRP) and establishment of pregnancy are discussed in the following.

Genes involved in cell communication and endometrial remodeling

In the present study, genes involved in extracellular exosomes/vesicles (EVs) were overrepresented in DEGs of LE, GE, and stroma. In sheep, EVs that carry genetic materials (mRNAs, proteins and miRNAs) were found in uterine luminal fluid (ULF), indicating its potential role in the conceptus-endometrial interaction [36]. The overrepresentation of this theme indicates a similar importance of EVs for embryo-maternal interactions as suggested for humans [37].

In addition to cell-cell adhesion (see below), cell junctions play also an important role in cell-to-cell communication. Genes involved in cell junction assembly, e.g., members of the connexin family were enriched for DEGs in LE. A number of connexins was upregulated, namely gap junction protein alpha (*GJA1*, *GJA4*, and *GJA5*), beta (*GJB3*, *GJB4*, and *GJB5*), and gamma (*GJC1*). Connexin 43 (*GJA1*) was expressed in all three cell types and upregulated in LE and stroma. Expression of *GJA4* and *GJB4* was only detectable in complete endometrium samples and *GJA5* only in GE. Expression and upregulation of *GJB3* was found in all three cell types with highest expression in LE whereas *GJB5* mRNA was only detected in LE of Day 12 pregnant gilts. In comparison

to findings of connexin expression in human and rodent endometrium and placenta, there are some similarities, but also distinct differences probably related to the non-invasive type of placentation in the pig. In humans as well as in rodents, expression of connexin 26 (*GJB2*) is suppressed in LE and connexin 43 (*GJA1*) is suppressed in stromal cells during the receptive phase and expression of *GJB2* is induced by the presence of a blastocyst and by proinflammatory factors such as PGF_{2a} and IL1B [38]. In contrast, in porcine endometrium, expression of *GJB2* mRNA was not detectable on Day 12 of pregnancy and the estrous cycle, respectively and *GJA1* mRNA was upregulated on Day 12. Expression of connexins in porcine endometrium could be controlled by a combination of conceptus estrogens and IL1B2 and PGs. So far, differential expression of *GJA4*, *GJA5*, *GJB3*, *GJB4*, and *GJB5* has been described only in trophoblast cells of human and/or mouse placenta [39], but not in endometrial cells. In addition, several genes of the tight junction protein family (claudins) were found as DE, *CLDNI* upregulated in LE and stroma, *CLDN3* and *CLDN4* upregulated only in LE, and *CLDN8* downregulated in LE and stroma. The distinct expression pattern of connexins and claudins in porcine endometrium suggests an important role in the interaction of the different functional compartments of the endometrium and with the conceptus.

The functional term “epithelial cell morphogenesis” was significantly enriched for LE. In this context, a number of growth factor and growth factor receptor genes have been found as differentially expressed in porcine endometrium during the preimplantation phase [40]. Fibroblast growth factor 7 (*FGF7*) mRNA was upregulated in LE and GE but not in stromal regions in agreement with the results of a previous study [41]. FGF7 secreted to the uterine lumen has been suggested to have autocrine effects on the endometrium as well as paracrine effects on the conceptus trophectoderm [42]. The mRNA for the high-affinity receptor for FGF7, *FGFR2* was expressed in all three endometrial cell types at high levels, supporting FGF7 could have autocrine effects on the endometrium. The mRNA of another fibroblast growth factor, *FGF9* was specifically upregulated in LE in agreement with the results in one of our previous studies [43]. Upregulation of *FGF9* expression was also found during the phase of maternal recognition of pregnancy in the mare [44].

In human endometrium, stroma-derived insulin-like growth factors (IGFs) are implicated in growth regulation of epithelial cells [45]. In porcine endometrium, mRNAs for *IGF1* and *IGF2* as well as their receptors were not DE on Day 12 but detected in all three endometrial cell types, with high expression levels for *IGF1*, *IGFR1*, and *IGFR2*. A number of mRNAs for IGF

attachment as the ability of trophectoderm cells to bind to OPN decreased after knocking down *ITGAV* [52].

A number of further genes assigned to the GO category “cell-cell adhesion” were upregulated in LE. Galectin 9 (*LGALS9*) mRNA was specifically upregulated in LE, and a similar expression profile was also reported in bovine endometrium [53]. Popovici et al. characterized the cells that express *LGALS9* in human endometrium, and found that *LGALS9* mRNA was significantly upregulated during early pregnancy in epithelial cells, whereas it was not expressed in stromal cells [54]. Additionally, syndecan 4 (*SDC4*) was upregulated in LE. In mice, *SDC4* was found as upregulated in LE and GE, and also in endometrial fibroblasts [55]. Another mRNA for a cell adhesion molecule, activated leukocyte cell adhesion molecule (*ALCAM*) was upregulated in LE and stroma. The results of a previous study showing that *ALCAM* is over-expressed in human endometrial cell during the implantation period [56] and expression of *ALCAM* on human endometrial epithelial cells and blastocysts [57] suggests that the *ALCAM*-*ALCAM* cell adhesion system is probably involved in the interaction between the embryo and maternal endometrium in humans and the pig.

The observed expression of genes known as involved in cell adhesion, shows that the attachment of the conceptus trophectoderm to the LE following after day 13 of pregnancy is already initiated on Day 12 (overview in Fig. 6).

Genes related to immune response

In context of conceptus-endometrium interactions in the pig, a number of signaling molecules involved in regulation of immune response have been described [58]. The pig conceptus-specific IL1B2 plays an important role during conceptus elongation and establishment of pregnancy through its effects on the uterine luminal epithelium [59, 60]. In the context of IL1B signaling, interleukin 1 receptor type 1 (*IL1R1*), interleukin 1 receptor accessory protein (*IL1RAP*), and interleukin 1 receptor associated kinases 3 and 4 (*IRAK3*, *IRAK4*) were upregulated in LE in the present study. In agreement with upregulation of *IL1R1* in LE, a previous report showed that secretion of IL1B2 from the conceptus is associated with increased endometrial expression of *IL1R1* [61]. In general, interleukin 1 beta is one of the major signaling molecules in the NFKB signaling pathway. Many members of this central immune response signaling pathway were found to be differentially expressed in LE, e.g., mRNAs for a number of NF-kappa B subunits (*NFKB1*, *NFKB2*, *REL*, *RELB*) were upregulated as well as NFKB inhibitors (*NFKBIA*, *NFKBIB*, *NFKBIE*). A recent study revealed that compared to IL1B1, the extent of NFKB activation and related gene expression was lower in endometrium treated with

IL1B2 in the pig [59]. The lower NFKB activation observed for the IL1B2 secretion from the conceptus could be associated with the simultaneous upregulation of *NFKBIA*, *NFKBIB*, and *NFKBIE*.

In addition to the IL1 and NFKB signaling pathway, a number of genes involved in the interferon type I signaling pathway (WP585) were obtained as DE. Members of the signal transducer and activator of transcription family (*STAT1*, *STAT4*, *STAT5A*, *STAT5B*) were mainly found as upregulated in LE, except *STAT2* which was downregulated in LE. Protein inhibitor of activated STAT 1 (*PIAS1*) was also found as upregulated but only in the complete endometria. Furthermore, a number of genes of the type I IFN signaling pathway were differentially expressed. Interferon alpha and beta receptor subunit 1 (*IFNAR1*) and *IFNAR2* were both upregulated in LE and GE, and all three LCM samples, respectively. In a recent study, upregulation of *IFNAR1* and *IFNAR2* mRNAs was also found on Day 12 of pregnancy in porcine endometrium and positive regulation by IL1B for *IFNAR1* mRNA and by IL1B and E2 for *IFNAR2* mRNA [62]. In contrast, the expression of interferon regulatory factors *IRF3*, *IRF4*, *IRF7*, and *IRF9* was lower in samples from Day 12 pregnant gilts, *IRF3*, *IRF4*, *IRF7* in complete endometria and *IRF9* in LE. Furthermore, a number of typical IFN-stimulated genes (*IFI6*, *IFI30*, *IFI44*, *IFI44L*, *IFIT1*, *IFIT2*, *IFIT3*, *IFITM1*, *IFITM3*, *MX1*, 2'-5'-oligoadenylate synthetases (*OAS1*, *OAS2*), and radical S-adenosyl methionine domain containing 2 (*RSAD2*) in LE and/or stroma) which are upregulated by IFNT in ruminants, showed lower expression in samples derived from Day 12 pregnant gilts. These findings are in line with the results from our previous studies [18, 19, 63] which showed that the endometrial response to conceptus signals has very distinct characteristics in comparison of Days 12 and 14 of pregnancy and a typical response to type I IFNs can only be observed on Day 14. In agreement with a previous study [64], increased expression of *IRF2* mRNA in LE was found in pregnant endometrium supporting upregulation by conceptus-derived E2.

However, in the pig, interferon gamma (IFNG) is the major trophoblast-derived IFN on Day 12 of pregnancy, which is synthesized between Days 12 and 20 during the gestation period [65]. Interferon gamma receptor 2 (*IFNGR2*) was upregulated in all three cell types of the pregnant endometrium in this study. Interferon gamma plays a crucial role in innate immune responses [66], and its functions are achieved via receptor-mediated signals that lead to changes in the transcription of hundreds of genes [67]. But since a strong inflammatory response would have negative effects on establishment of pregnancy, IFNG effects have to be regulated. Suppressor of cytokine signaling 1 (SOCS1) has been identified as a specific negative regulator of IFNG effects [68].

SOCS1 mRNA was upregulated in complete endometria. In addition, *SOCS4* was found as upregulated in LE, whereas *SOCS6* was downregulated in LE and stroma.

Members of the S100 calcium binding protein A gene family have been found as involved in innate immunity [69]. Particularly *S100A7*, *S100A8*, *S100A9*, and *S100A12* were highly upregulated in pregnant sows (log₂ FC up 8–12). Members of this protein family are in addition important for the modulation of the inflammatory response [70].

Many CD molecules genes (e.g. *CD14*, *CD34*, *CD36*, *CD40*, *CD46*, *CD58*, *CD93*, and *CD99*) were found as upregulated in complete tissue. In LCM samples, *CD14* was found as upregulated in GE and stroma and was not detectable in LE. The CD14 molecule is an accessory molecule of toll like receptor 4 (TLR4) which is important for innate immune responses to bacterial and other microbial structures [71]. The mRNA for *TLR4* was downregulated in LE and stroma. The expression patterns of *CD14* and *TLR4* suggest a specific and local modulation of proinflammatory effects in the porcine during early pregnancy. In addition, *CD99* was found as upregulated in LE and stroma, which has a major regulatory function in early T-cells [72]. Inducible T-cell costimulator ligand (*ICOSLG*) playing a role in regulation of endometrial T-cells [73] was upregulated in LE which could also be involved in modulation of the maternal immune system.

The expression patterns of genes involved in immune response reflects the effects of conceptus- and endometrium-derived signaling molecules. Overall, the involved genes and their spatial regulation suggests a tight control of the maternal immune response to support conceptus growth and to avoid negative inflammatory effects (overview in Fig. 6).

Genes involved in estrogen signaling and metabolism

Estrogen receptor alpha (*ESR1*) expression has been studied in endometrium of gilts and sows during the estrous cycle and early pregnancy [74–76]. No differences in *ESR1* mRNA expression was found between cyclic and pregnant endometrium on Days 11–12. Here, we found three-fold lower mRNA concentrations in LE of samples from pregnant gilts. The mRNA encoding the membrane-bound G protein-coupled estrogen receptor 1 (*GPER1*) was also downregulated, but only in the complete tissue samples. The fact that *GPER1* was only found as DE in complete endometrium samples suggests regulation near blood vessel regions. Downregulation of *GPER1* mRNA could result from downregulation of *ESR1* since it has been shown that *GPER1* is regulated by nuclear *ESR1* and progesterone receptors [77].

The functional categories “sterol biosynthetic process” and “steroid metabolic process” were specifically

overrepresented for the DEGs found in stroma. Genes encoding UDP-glucuronosyltransferases (UGTs) were upregulated, UDP glucuronosyltransferase 1 family, polypeptide A6 (*UGT1A6*) in GE, UDP-glucuronosyltransferase 2B31 (*UGT2B31*) in LE, and UDP-glucuronosyltransferase 2B31-like (*LOC100515741*) in complete endometria. As UGT enzymes are involved in glucuronidation of E2 [78], this indicates increased UGT-mediated estrogen metabolism on Day 12 of pregnancy. Cytochrome P450 family members *CYP1B1*, *CYP7A1*, *CYP7B1* which are involved in E2 synthesis and metabolism [79, 80], were also DE on Day 12 of pregnancy. For example, *CYP7A1* regulating cholesterol metabolism [81] was downregulated in LE and stroma, on the other side, *CYP7B1* being related to steroid metabolism [82] was downregulated in LE. Sulfotransferase family 1E, estrogen-preferring, member 1 (*SULT1E1*) involved in steroid synthesis and metabolism has been found as upregulated in porcine endometrium during Days 15 and 16 of pregnancy [83]. We found that *SULT1E1* is already upregulated on Day 12 in LE, GE, and stroma. Overall, the results for genes involved in E2 metabolism showed downregulation of genes involved in E2 synthesis, while genes probably mediating inactivation of E2 (sulfatases, UGTs) were upregulated in the endometrium on Day 12 of pregnancy (see overview in Fig. 6).

Genes involved in prostaglandin metabolism and signaling

Members of the phospholipase A2 family (PLA2s), key enzymes for the release of PG precursor molecules from the plasma membrane [84], were downregulated mainly in complete endometrial tissue samples, except *PLA2G4A* which was localized to stromal areas. The downregulation of PLA2 genes in complete endometria could indicate regulation associated with immune cells or cells of blood vessels. In a recent study, a trend for downregulation of *PLA2G4A* has been found on Day 12 of pregnancy whereas no difference was found on Day 15 [85]. The aldo-keto reductase family 1 member B (*AKR1B1*) is an aldose reductase enzyme that is secreted into the extracellular spaces where it functions in the synthesis of PGs, specifically PGF_{2a} in the endometrium [86]. Strong upregulation of *AKR1B1* mRNA was found only in LE and GE with strongest expression in LE, while prostaglandin-endoperoxide synthase 2 (*PTGS2*) was downregulated only in stroma. This leads us to hypothesize that *AKR1B1*, together with *PTGS2* maybe important enzymes involved in the change of endocrine to exocrine secretion of PGF_{2a} in porcine endometrium. Furthermore, the mRNA for *HSD17B12* was upregulated in LE. Its known function in conversion of estrone to estradiol is in contrast to the observed downregulation of other genes involved in E2 synthesis, but *HSD17B12* is also known to function in arachidonic acid metabolism

thereby providing precursors for prostaglandin synthesis [87]. Together with the localization of upregulation in LE this suggests a role in PG synthesis on Day 12 of pregnancy in porcine endometrium. The mRNA for prostaglandin E synthase (*PTGES*) was found as down-regulated in LE. In addition, *PTGES2*, *PTGES3*, and *PTGES3L* were also expressed in all three cell types (*PTGES2* not in GE). The mRNA of *PTGES3L* was more than 4-fold upregulated in LE of pregnant endometrium. However, the expression of *PTGES3* mRNA was clearly higher compared to the mRNAs of the other PGE2 synthases. Similar to the findings in a recent study [85], *PTGES3* mRNA was slightly higher in LE on Day 12 of pregnancy but did not reach the significance threshold (adjusted *P*-value 0.042 in LE, 0.021 in complete tissue).

The biological effects of PGs are also controlled by PG transport, e.g., mediated by specific transporters such as transmembrane transporters ATP-binding cassette, subfamily C, member 4 (*ABCC4*) and solute carrier organic anion transport family, member 2A1 (*SLCO2A1*). In porcine endometrium, *ABCC4* and *SLCO2A1* expression has been found as upregulated on Day 12 of pregnancy in LE and GE, and LE and blood vessels, respectively [88]. In our study, *ABCC4* was downregulated and *SLCO2A1* was upregulated in LCM samples from stromal areas. A closer look at the RNA-seq data showed that *ABCC4* is expressed in all three cell types. Likewise, *SLCO2A1* mRNA was detectable at similar expression levels in all three cell types. In GE, another gene (*LOC100738425*) similar to human *ABCC4* was expressed and showed a 7.5-fold increase in samples from Day 12 pregnant gilts. Altogether, the obtained results revealed a very complex pattern of regulation for PG synthesizing, metabolizing and transporting proteins, as well as PG receptors. Basically, the results from our endometrial LCM RNA-seq analysis suggest a specific upregulation of the PGF synthase *AKR1B1* in LE and GE, specific upregulation of PG transporters in the LE, local upregulation of PGE synthases, and a general downregulation of PG precursor synthesis in other regions of the endometrium as the molecular mechanism for the switch from endocrine to exocrine PGF₂ secretion and the regulation of PGE₂ production, which needs further comprehensive functional studies at the protein level (for an overview see Fig. 6).

Conclusions

In summary, this study comprehensively determined differential gene expression in the endometrial compartments/cell types LE, GE, and stroma of porcine endometrium during the preimplantation period. In comparison to previous studies, the localization of transcriptomic changes in response to conceptus signals was addressed and used to draw a global picture of molecular

pathways involved in establishment and maintenance of pregnancy in the pig. The findings of this study will serve as a basis for in-depth investigations of cell type-specific molecular pathways in porcine during the phase of maternal recognition of pregnancy.

Additional files

Additional file 1: Table S1. Raw data statistic of RNA-seq (DOCX 15 kb)

Additional file 2: Table S2. Differentially expressed genes in luminal epithelium, glandular epithelium, stroma, and complete tissue. (XLSX 1826 kb)

Additional file 3: Table S3. Selected function found in luminal epithelium, glandular epithelium, stroma, and complete tissue. (XLSX 58 kb)

Additional file 4: Table S4. Top 10 differentially expressed genes in luminal epithelium (LE), glandular epithelium (GE), and stromal cells (S). (DOCX 20 kb)

Additional file 5: Table S5. Overrepresentation analysis for genes only differentially expressed in three cell types and complete tissue. (XLSX 687 kb)

Additional file 6: Table S6. DEGs involved in estrogen signaling, prostaglandin metabolism and signaling, and other selected pathways. (XLSX 117 kb)

Abbreviations

ABCC4: ATP-binding cassette, subfamily C, member 4; ABI3BP: ABI family member 3 binding protein; AKR1B1: Aldo-keto reductase family 1 member B; ALCAM: Activated leukocyte cell adhesion molecule; ALDH2: Aldehyde dehydrogenase 2 family; ANGPT2: Angiopoietin-2; B4GALNT2: Beta-1,4-N-acetyl-galactosaminyltransferase 2; BMP: Bone morphogenetic protein; CALM: Calcium/calmodulin genes; CCDC: Coiled-coil domain containing; CDs: CD molecules; CENPK: Centromere protein K; CYP1B: Cytochrome P450 family members; DE: Differentially expressed; DEGs: Differentially expressed genes; ECM: Extracellular matrix; EGF: Epidermal growth factor; EGFR: Epidermal growth factor receptor; ESR1: Estrogen receptor alpha; ETV1: ETS variant 1; EVs: Extracellular exosomes/vesicles; FGF: Fibroblast growth factor; FRAS1: Extracellular matrix gene 1; FRK: Fyn related Src family tyrosine kinase; GE: Glandular epithelium; GJA: Gap junction protein alpha; GJB: Gap junction protein beta; GJC: Gap junction protein gamma; GMCSF: colony stimulating factor 2; GO: Gene ontology; GPER1: G protein-coupled estrogen receptor 1; HBE1: Hemoglobin subunit epsilon 1; HSD11B1: Hydroxysteroid 11-beta dehydrogenase 1; ICOSLG: Inducible T-cell costimulator ligand; IGF: Insulin-like growth factor; IGFBP: Insulin-like growth factor binding protein; IL1B2: Interleukin one beta 2; IL1R: Interleukin 1 receptor; IL1RAP: Interleukin 1 receptor accessory protein; INHBB: Inhibin beta B subunit; IRAK: Interleukin 1 receptor associated kinase; IRF2BP2: Interferon regulatory factor 2 binding protein 2; ITGs: Integrin genes; LAP: Latency-associated peptide; LCM: Laser capture microdissection; LE: Luminal epithelium; LFA-1: Lymphocyte function-associated antigen-1; LGALS9: Galectin 9; LIF: Interleukin 6 family cytokine; LLC: Large latent complex; LTBP: Transforming growth factor beta binding protein; MMRN1: Multimerin 1; MTR: Methyltetrahydrofolate-homocysteine methyltransferase; NCB: National Center for Biotechnology Information; NFkB: Nuclear factor kappa-B; NPY: Neuropeptide Y; NR3C1: Glucocorticoid receptor; OAS: 2'-5'-oligoadenylate synthetase; OPN: Osteopontin; OSTN: Osteocrin; PG: Prostaglandin; PGF2a: Prostaglandin F2a; PIAS1: Protein inhibitor of activated STAT 1; PLA2s: Phospholipase A2 family; PROX1: Prospero homeobox 1; PTGES: Prostaglandin E synthase; PTGS2: Prostaglandin-endoperoxide synthase 2; RANTES: C-C motif chemokine ligand 5; RIN: RNA integrity number; RNA-Seq: RNA-sequencing; ROCK: Rho associated coiled-coil containing protein kinase; RORB: RAR related orphan receptor B; RSAD2: Radical S-adenosyl methionine domain containing 2; S100A: S100 calcium binding protein A; SALL2: Spalt like transcription factor 2; SCN3A: Sodium voltage-gated channel alpha subunit 3; SDC4: Syndecan 4; SERPINB11: Serpin family B member 11; SLC24A4: Solute

carrier family 24 member 4; SLC20A1: Solute carrier organic anion transport family, member 2A1; SLCs: Solute carrier family members; SNCA: Synuclein alpha; SOCS: Suppressor of cytokine signaling; SOSTDC1: Sclerostin domain containing 1; STAT: Signal transducer and activator of transcription family; SULT1E1: Sulfotransferase family 1E, estrogen-preferring, member 1; TGFβ: Transforming growth factor beta; TLR4: Toll like receptor 4; TMEMs: Transmembrane protein; TNFα: Tumor necrosis factor; UGTs: UDP-glucuronosyltransferases; ULF: Uterine luminal fluid; VEGF: Vascular endothelial growth factor

Acknowledgements

We would like to thank the Functional Genomics Center Zurich (FGCZ) for performing Illumina sequencing of the RNA-Seq libraries and the Scientific Center for Optical and Electron Microscopy (ScopeM) for support with performance of laser capture microdissection.

Availability of data and material

All data used in this study have been included in the article and its supplementary files. The sequence data (GSE109539) is available at National Center for Biotechnology Information (NCBI) Gene Expression Omnibus (<https://www.ncbi.nlm.nih.gov/geo/query/acc.cgi?acc=GSE109539>).

Funding

This work was supported by the China Scholarship Council.

Authors' contributions

SZ carried out the experiment, data analysis and prepared the manuscript. JB and SB developed the pipeline for data analysis. SEU provided the platform for the laboratory work and supported the project. SB designed the study, supervised the experiments and revised the manuscript. All authors read and approved the final manuscript.

Ethics approval

Treatments of gilts were performed in accordance with the regulations of the local authorities (District Government of Upper Bavaria, Veterinary Office). The performed standard procedures/treatments in animal breeding were all in accordance with the International Guiding Principles for Biomedical Research Involving Animals, as proposed by the Society for the Study of Reproduction, with the European Convention on Animal Experimentation and with the German Animal Welfare Act.

Consent for publication

Not applicable

Competing interests

The authors declare that they have no competing interests.

Publisher's Note

Springer Nature remains neutral with regard to jurisdictional claims in published maps and institutional affiliations.

Author details

¹ETH Zurich, Animal Physiology, Institute of Agricultural Sciences, Zurich, Switzerland. ²Department for Farm Animals, University of Zurich, Genetics and Functional Genomics, Clinic of Reproductive Medicine, Zurich, Switzerland.

Received: 5 February 2018 Accepted: 6 June 2018

Published online: 14 June 2018

References

- Guillomot M. Cellular interactions during implantation in domestic ruminants. *J Reprod Fertil.* 1994;49(Suppl):39–51.
- Bazer FW, Spencer TE, Johnson GA, Burghardt RC, Wu G. Comparative aspects of implantation. *Reproduction.* 2009;138(2):195–209.
- Dziuk P. Effect of migration, distribution and spacing of pig embryos on pregnancy and fetal survival. *J Reprod Fertil.* 1984;33(Suppl):57–63.
- Geisert RD, Zavy MT, Moffatt RJ, Blair RM, Yellin T. Embryonic steroids and the establishment of pregnancy in pigs. *J Reprod Fertil.* 1990;40(Suppl):293–305.
- Modi DN, Bhartiya P. Physiology of embryo-endometrial cross talk. *Biomed Res J.* 2015;2:83–104.
- Geisert RD, Renegar RH, Thatcher WW, Roberts RM, Bazer FW. Establishment of pregnancy in the pig: I. Interrelationships between preimplantation development of the pig blastocyst and uterine endometrial secretions. *Biol Reprod.* 1982;27(4):925–39.
- Keys JL, King GJ. Microscopic examination of porcine conceptus-maternal interface between days 10 and 19 of pregnancy. *Dev Dynam.* 1990;188(3):221–38.
- Keys JL, King GJ. Structural changes in the luminal epithelium of the porcine uterus between days 10 and 19 of the estrous cycle. *Am J Anat.* 1989;185(1):42–57.
- Ford SP, Christenson RK. Blood flow to uteri of sows during the estrous cycle and early pregnancy: local effect of the conceptus on the uterine blood supply. *Biol Reprod.* 1979;21(3):617–24.
- Zavy MT, Bazer FW, Thatcher WW, Wilcox CJ. A study of prostaglandin F_{2α} as the luteolysin in swine: V comparison of prostaglandin F, progesterone, estrone and estradiol in uterine flushings from pregnant and nonpregnant gilts. *Prostaglandins.* 1980;20(5):837–51.
- Keys JL, King GJ. Effects of topical and systemic estrogen on morphology of porcine uterine luminal epithelia. *Biol Reprod.* 1992;46(6):1165–75.
- Ross JW, Ashworth MD, Stein DR, Couture OP, Tuggle CK, Geisert RD. Identification of differential gene expression during porcine conceptus rapid trophoblastic elongation and attachment to uterine luminal epithelium. *Physiol Genomics.* 2009;36(3):140–8.
- Hayden MS, Ghosh S. NF-κB, the first quarter-century: remarkable progress and outstanding questions. *Genes Dev.* 2012;26(3):203–34.
- Ali S, Mann DA. Signal transduction via the NF-κB pathway: a targeted treatment modality for infection, inflammation and repair. *Cell Biochem Funct.* 2004;22(2):67–79.
- Almiñana C, Heath PR, Wilkinson S, Sanchez-Osorio J, Cuello C, Parrilla I, et al. Early developing pig embryos mediate their own environment in the maternal tract. *PLoS One.* 2012;7(3):e33625.
- Wang Y, Hu T, Wu L, Liu X, Xue S, Lei M. Identification of non-coding and coding RNAs in porcine endometrium. *Genomics.* 2017;109(1):43–50.
- Lin H, Wang H, Wang Y, Liu C, Wang C, Guo J. Transcriptomic analysis of the porcine endometrium during embryo implantation. *Genes.* 2015;6(4):1330–46.
- Samborski A, Graf A, Krebs S, Kessler B, Reichenbach M, Reichenbach H-D, et al. Transcriptome changes in the porcine endometrium during the preattachment phase. *Biol Reprod.* 2013;89(6):1–16.
- Samborski A, Graf A, Krebs S, Kessler B, Bauersachs S. Deep sequencing of the porcine endometrial transcriptome on day 14 of pregnancy. *Biol Reprod.* 2013;88(4):1–13.
- Bonnet A, Bevilacqua C, Benne F, Bodin L, Cotinot C, Liaubet L, et al. Transcriptome profiling of sheep granulosa cells and oocytes during early follicular development obtained by laser capture microdissection. *BMC Genomics.* 2011;12(1):417.
- Pascal LE, True LD, Campbell DS, Deutsch EW, Risk M, Coleman IM, et al. Correlation of mRNA and protein levels: cell type-specific gene expression of cluster designation antigens in the prostate. *BMC Genomics.* 2008;9(1):246.
- Niklaus AL, Pollard JW. Mining the mouse transcriptome of receptive endometrium reveals distinct molecular signatures for the luminal and glandular epithelium. *Endocrinology.* 2006;147(7):3375–90.
- Field SL, Cummings M, Orsi NM. Epithelial and stromal-specific immune pathway activation in the murine endometrium post-coitum. *Reproduction.* 2015;150(2):127–38.
- Brooks K, Burns GW, Moraes JGN, Spencer TE. Analysis of the uterine epithelial transcriptome and luminal fluid proteome during the peri-implantation period of pregnancy in sheep. *Biol Reprod.* 2016;95(4):1–17.
- Giardine B, Riemer C, Hardison RC, Burhans R, Eltnitski L, Shah P, et al. Galaxy: a platform for interactive large-scale genome analysis. *Genome Res.* 2005;15(10):1451–5.
- Robinson MD, McCarthy DJ, Smyth GK. edgeR: a Bioconductor package for differential expression analysis of digital gene expression data. *Bioinformatics.* 2010;26(1):139–40.
- Dennis G, Sherman BT, Hosack DA, Yang J, Gao W, Lane HC, et al. DAVID: database for annotation, visualization, and integrated discovery. *Genome Biol.* 2003;4(9):R60.

28. Jeong W, Kim J, Bazer FW, Song G, Kim J. Stimulatory effects of interleukin-1 beta on development of porcine uterine epithelial cell are mediated by activation of the ERK1/2 MAPK cell signaling cascade. *Mol Cell Endocrinol.* 2016;419:225–34.
29. Jeong W, Jung S, Bazer FW, Song G, Kim J. Epidermal growth factor: porcine uterine luminal epithelial cell migratory signal during the peri-implantation period of pregnancy. *Mol Cell Endocrinol.* 2016;420:66–74.
30. Girling JE, Rogers PA. Regulation of endometrial vascular remodelling: role of the vascular endothelial growth factor family and the angiopoietin-TIE signalling system. *Reproduction.* 2009;138(6):883–93.
31. Tszuki T, Okada H, Cho H, Shimoi K, Miyashiro H, Yasuda K, et al. Divergent regulation of angiopoietin-1, angiopoietin-2, and vascular endothelial growth factor by hypoxia and female sex steroids in human endometrial stromal cells. *Eur J Obstet Gyn R B.* 2013;168(1):95–101.
32. Hewett P, Nijjar S, Shams M, Morgan S, Gupta J, Ahmed A. Down-regulation of angiopoietin-1 expression in menorrhagia. *Am J Pathol.* 2002;160(3):773–80.
33. Geisert RD, Johnson GA, Burghardt RC. Implantation and establishment of pregnancy in the pig. In: Geisert RD, Bazer FW, editors. *Regulation of implantation and establishment of pregnancy in mammals.* Switzerland: Springer International Publishing; 2015. p. 137–63.
34. Choi Y, Seo H, Shim J, Yoo I, Ka H. Calcium extrusion regulatory molecules: differential expression during pregnancy in the porcine uterus. *Domest Anim Endocrinol.* 2014;47:1–10.
35. Choi Y, Seo H, Kim M, Ka H. Dynamic expression of calcium-regulatory molecules, TRPV6 and S100G, in the uterine endometrium during pregnancy in pigs. *Biol Reprod.* 2009;81(6):1122–30.
36. Burns G, Brooks K, Wildung M, Navakanitworakul R, Christenson LK, Spencer TE. Extracellular vesicles in luminal fluid of the ovine uterus. *PLoS One.* 2014; 9(3):e90913.
37. Greening DW, Nguyen HP, Elgass K, Simpson RJ, Salamonsen LA. Human endometrial exosomes contain hormone-specific cargo modulating trophoblast adhesive capacity: insights into endometrial-embryo interactions. *Biol Reprod.* 2016;94(2):1–15.
38. Grummer R, Winterhager E. Blastocyst-mediated induction of endometrial connexins: an inflammatory response? *J Reprod Immunol.* 2011;90(1):9–13.
39. Kibschull M, Gellhaus A, Winterhager E. Analogous and unique functions of connexins in mouse and human placental development. *Placenta.* 2008; 29(10):848–54.
40. Wacławik A, Kaczmarek MM, Blitek A, Kaczynski P, Ziecik AJ. Embryo-maternal dialogue during pregnancy establishment and implantation in the pig. *Mol Reprod Dev.* 2017;84(9):842–55.
41. Ka H, Spencer TE, Johnson GA, Bazer FW. Keratinocyte growth factor: expression by endometrial epithelia of the porcine uterus. *Biol Reprod.* 2000;62(6):1772–8.
42. Ka H, Jaeger LA, Johnson GA, Spencer TE, Bazer FW. Keratinocyte growth factor is up-regulated by estrogen in the porcine uterine endometrium and functions in trophoblast cell proliferation and differentiation. *Endocrinology.* 2001;142(6):2303–10.
43. Østrup E, Bauersachs S, Blum H, Wolf E, Hyttel P. Differential endometrial gene expression in pregnant and nonpregnant sows. *Biol Reprod.* 2010; 83(2):277–85.
44. Merkl M, Ulbrich SE, Otdorff C, Herbach N, Wanke R, Wolf E, et al. Microarray analysis of equine endometrium at days 8 and 12 of pregnancy. *Biol Reprod.* 2010;83(5):874–86.
45. Zhou J, Dsupin BA, Giudice LC, Bondy CA. Insulin-like growth factor system gene expression in human endometrium during the menstrual cycle. *J Clin Endocr Metab.* 1994;79(6):1723–34.
46. Wollenhaupt K, Kettler A, Brussow KP, Schneider F, Kanitz W, Einspanier R. Regulation of the expression and bioactivation of the epidermal growth factor receptor system by estradiol in pig oviduct and endometrium. *Reprod Fertil Dev.* 2001;13(2–3):167–76.
47. Jeong W, Kim J, Bazer FW, Song G. Epidermal growth factor stimulates proliferation and migration of porcine trophoblast cells through protooncogenic protein kinase 1 and extracellular-signal-regulated kinases 1/2 mitogen-activated protein kinase signal transduction cascades during early pregnancy. *Mol Cell Endocrinol.* 2013;381(1–2):302–11.
48. Jones RL, Stoikos C, Findlay JK, Salamonsen LA. TGF-beta superfamily expression and actions in the endometrium and placenta. *Reproduction.* 2006;132(2):217–32.
49. Kling D, Fingerle J, Harlan JM. Inhibition of leukocyte extravasation with a monoclonal antibody to CD18 during formation of experimental intimal thickening in rabbit carotid arteries. *Arterioscler Thromb Vasc Biol.* 1992; 12(9):997–1007.
50. Bowen JA, Bazer FW, Burghardt RC. Spatial and temporal analyses of integrin and Muc-1 expression in porcine uterine epithelium and trophoblast in vivo. *Biol Reprod.* 1996;55(5):1098–106.
51. Garlow JE, Ka H, Johnson GA, Burghardt RC, Jaeger LA, Bazer FW. Analysis of osteopontin at the maternal-placental interface in pigs. *Biol Reprod.* 2002; 66(3):718–25.
52. Frank JW, Seo H, Burghardt RC, Bayless KJ, Johnson GA. ITGAV (alpha v integrins) bind SPP1 (osteopontin) to support trophoblast cell adhesion. *Reproduction.* 2017;153(5):695–706.
53. Bauersachs S, Ulbrich SE, Gross K, Schmidt SE, Meyer HH, Wenigerkind H, et al. Embryo-induced transcriptome changes in bovine endometrium reveal species-specific and common molecular markers of uterine receptivity. *Reproduction.* 2006;132(2):319–31.
54. Popovici RM, Krause MS, Germeyer A, Strowitzki T, von Wolff M. Galectin-9: a new endometrial epithelial marker for the mid-and late-secretory and decidua phases in humans. *J Clin Endocrinol Metab.* 2005;90(11):6170–6.
55. San Martin S, Soto-Suazo M, Zorn TMT. Perlecan and Syndecan-4 in uterine tissues during the early pregnancy in mice. *Am J Reprod Immunol.* 2004; 52(1):53–9.
56. Haouzi D, Dechaud H, Assou S, Monzo C, De Vos J, Hamamah S. Transcriptome analysis reveals dialogues between human trophoblast and endometrial cells during the implantation period. *Hum Reprod.* 2011; 26(6):1440–9.
57. Fujiwara H, Tatsumi K, Kosaka K, Sato Y, Higuchi T, Yoshioka S, et al. Human blastocysts and endometrial epithelial cells express activated leukocyte cell adhesion molecule (ALCAM/CD166). *J Clin Endocrinol Metab.* 2003;88(7):3437–43.
58. Wacławik A. Novel insights into the mechanisms of pregnancy establishment: regulation of prostaglandin synthesis and signaling in the pig. *Reproduction.* 2011;142(3):389–99.
59. Mathew DJ, Newsom EM, Guyton JM, Tuggle CK, Geisert RD, Lucy MC. Activation of the transcription factor nuclear factor-kappa B in uterine luminal epithelial cells by interleukin 1 Beta 2: A novel interleukin 1 expressed by the elongating pig conceptus. *Biol Reprod.* 2015;92(4):101–13.
60. Geisert RD, Johnson GA, Burghardt RC. Implantation and establishment of pregnancy in the pig. *Adv Anat Embryol Cell Biol.* 2015;216:137–63.
61. Ross JW, Ashworth MD, Mathew D, Reagan P, Ritchey JW, Hayashi K, et al. Activation of the transcription factor, nuclear factor kappa-B, during the estrous cycle and early pregnancy in the pig. *Reprod Biol Endocrinol.* 2010;8:39.
62. Jang H, Choi Y, Yoo I, Han J, Kim M, Ka H. Characterization of interferon alpha and beta receptor IFNAR1 and IFNAR2 expression and regulation in the uterine endometrium during the estrous cycle and pregnancy in pigs. *Theriogenology.* 2017;88:166–73.
63. Bauersachs S, Wolf E. Uterine responses to the preattachment embryo in domestic ungulates: recognition of pregnancy and preparation for implantation. *Annu Rev Anim Biosci.* 2015;3(1):489–511.
64. Joyce MM, Burghardt JR, Burghardt RC, Hooper RN, Jaeger LA, Spencer TE, et al. Pig conceptuses increase uterine interferon-regulatory factor 1 (IRF1), but restrict expression to stroma through estrogen-induced IRF2 in luminal epithelium. *Biol Reprod.* 2007;77(2):292–302.
65. Cencić A, Guillomot M, Koren S, La Bonnardièrre C. Trophoblastic interferons: do they modulate uterine cellular markers at the time of conceptus attachment in the pig? *Placenta.* 2003;24(8):862–9.
66. Takaoka A, Yanai H. Interferon signalling network in innate defence. *Cell Microbiol.* 2006;8(6):907–22.
67. Boehm U, Guethlein L, Klamp T, Ozbek K, Schaub A, Fütterer A, et al. Two families of GTPases dominate the complex cellular response to IFN-γ. *J Immunol.* 1998;161(12):6715–23.
68. Blumer T, Coto-Llerena M, Duong FHT, Heim MH. SOCS1 is an inducible negative regulator of interferon lambda (IFN-lambda)-induced gene expression in vivo. *J Biol Chem.* 2017;292(43):17928–38.
69. Foell D, Wittkowski H, Vogl T, Roth J. S100 proteins expressed in phagocytes: a novel group of damage-associated molecular pattern molecules. *J Leukoc Biol.* 2007;81(1):28–37.
70. Pruenster M, Vogl T, Roth J, Sperandio M. S100A8/A9: from basic science to clinical application. *Pharmacol Ther.* 2016;167:120–31.
71. Herath S, Fischer DP, Werling D, Williams EJ, Lilly ST, Dobson H, et al. Expression and function of toll-like receptor 4 in the endometrial cells of the uterus. *Endocrinology.* 2006;147(1):562–70.
72. Pettersen RD, Bernard G, Olafsen MK, Pourtejn M, Lie SO. CD99 signals caspase-independent T cell death. *J Immunol.* 2001;166(8):4931–42.

73. Nagamatsu T, Barrier BF, Schust DJ. The regulation of T-cell cytokine production by ICOS-B7H2 interactions at the human fetomaternal interface. *Immunol Cell Biol.* 2011;89(3):417.
74. Sukjumlong S, Persson E, Dalin AM, Janson V, Sahlin L. Messenger RNA levels of estrogen receptors alpha and beta and progesterone receptors in the cyclic and inseminated/early pregnant sow uterus. *Anim Reprod Sci.* 2009;112(3–4):215–28.
75. Geisert RD, Brenner RM, Moffatt RJ, Harney JP, Yellin T, Bazer FW. Changes in oestrogen receptor protein, mRNA expression and localization in the endometrium of cyclic and pregnant gilts. *Reprod Fertil Dev.* 1993;5(3):247–60.
76. Sukjumlong S, Persson E, Kaeoket K, Dalin AM. Immunohistochemical studies on oestrogen receptor alpha (ERalpha) and the proliferative marker Ki-67 in the sow uterus at oestrus and early pregnancy. *Reprod Domest Anim.* 2004;39(5):361–9.
77. Plante BJ, Lessey BA, Taylor RN, Wang W, Bagchi MK, Yuan L, et al. G protein-coupled estrogen receptor (GPER) expression in normal and abnormal endometrium. *Reprod Sci.* 2012;19(7):684–93.
78. Lépinie J, Bernard O, Plante M, Têtu B, Pelletier G, Labrie F, et al. Specificity and regioselectivity of the conjugation of estradiol, estrone, and their catecholestrogen and methoxyestrogen metabolites by human uridine diphospho-glucuronosyltransferases expressed in endometrium. *J Clin Endocr Metab.* 2004;89(10):5222–32.
79. Sasaki M, Kaneuchi M, Fujimoto S, Tanaka Y, Dahiya R. CYP1B1 gene in endometrial cancer. *Mol Cell Endocrinol.* 2003;202(1):171–6.
80. Sasaki M, Kaneuchi M, Sakuragi N, Dahiya R. Multiple promoters of catechol-O-methyltransferase gene are selectively inactivated by CpG hypermethylation in endometrial cancer. *Cancer Res.* 2003;63(12):3101–6.
81. Li T, Francl JM, Boehme S, Chiang JYL. Regulation of cholesterol and bile acid homeostasis by the cholesterol 7 α -hydroxylase/steroid response element-binding protein 2/microRNA-33a axis in mice. *Hepatology.* 2013; 58(3):1111–21.
82. Pettersson H, Holmberg L, Axelson M, Norlin M. CYP7B1-mediated metabolism of dehydroepiandrosterone and 5 α -androstane-3 β , 17 β -diol—potential role (s) for estrogen signaling. *FEBS J.* 2008;275(8):1778–89.
83. Franczak A, Wojciechowicz B, Kotwica G. Transcriptomic analysis of the porcine endometrium during early pregnancy and the estrous cycle. *Reprod Biol.* 2013;13(3):229–37.
84. Andersen S, Sjursen W, Laegreid A, Austgulen R, Johansen B. Immunohistologic detection of non-pancreatic phospholipase A2 (type II) in human placenta and its possible involvement in normal parturition at term. *Prostaglandins Leukot Essent Fatty Acids.* 1994;51(1):19–26.
85. Seo H, Choi Y, Shim J, Yoo I, Ka H. Comprehensive analysis of prostaglandin metabolic enzyme expression during pregnancy and the characterization of AKR1B1 as a prostaglandin F synthase at the maternal-conceptus interface in pigs. *Biol Reprod.* 2014;90(5):1–13.
86. Lacroix Pepin N, Chapdelaine P, Rodriguez Y, Tremblay JP, Fortier MA. Generation of human endometrial knockout cell lines with the CRISPR/Cas9 system confirms the prostaglandin F2alpha synthase activity of aldoketoreductase 1B1. *Mol Hum Reprod.* 2014;20(7):650–63.
87. Kemilainen H, Adam M, Maki-Jouppila J, Damdimopoulou P, Damdimopoulos AE, Kere J, et al. The Hydroxysteroid (17beta) dehydrogenase family gene HSD17B12 is involved in the prostaglandin synthesis pathway, the ovarian function, and regulation of fertility. *Endocrinology.* 2016;157(10):3719–30.
88. Seo H, Choi Y, Shim J, Yoo I, Ka H. Prostaglandin transporters ABCC4 and SLCO2A1 in the uterine endometrium and conceptus during pregnancy in pigs. *Biol Reprod.* 2014;90(5):101–10.

Ready to submit your research? Choose BMC and benefit from:

- fast, convenient online submission
- thorough peer review by experienced researchers in your field
- rapid publication on acceptance
- support for research data, including large and complex data types
- gold Open Access which fosters wider collaboration and increased citations
- maximum visibility for your research: over 100M website views per year

At BMC, research is always in progress.

Learn more biomedcentral.com/submissions

