



# Groundwater thresholds for drought resilience in floodplain woodlands

A case study from the northern Murray-Darling Basin

*Kate Reardon-Smith<sup>1</sup>, Jarrod Kath<sup>1,2</sup>, Andy Le Brocque<sup>1</sup>, Fiona Dyer<sup>2</sup>*

<sup>1</sup> International Centre for Applied Climate Sciences, University of Southern Queensland

<sup>2</sup> Institute for Applied Ecology, University of Canberra

**MDB** *future*s

*Collaborative Research Network*



UNIVERSITY OF  
CANBERRA



INSTITUTE FOR  
APPLIED ECOLOGY



ACSC

Australian Centre for  
Sustainable Catchments



# Introduction

---

- Evidence of poor health of riverine (riparian and floodplain) vegetation in many parts of the world
  - often associated with altered surface flow regimes due to regulation and extraction for human-centred uses
- Management responses:
  - protection of riparian zone from overgrazing
  - provision of environmental flows (overbank flooding)
- BUT lack of understanding of local ecological processes & evidence-based management





# Murray-Darling floodplain woodlands

---

- Dominant floodplain tree species – e.g. river red gum (*Eucalyptus camaldulensis*), poplar box (*E. populnea*)
- Important ecological functions (Reid & Brooks, 2000)
  - habitat, nutrient cycling, hydraulic redistribution within soils
  - keystone species (e.g. ground cover composition, Reardon-Smith 2011)
- Can tolerate long periods of drought; also periodically inundated
  - ⇒ adapted to significant phase changes (Colloff & Baldwin 2010)
- Periodic utilisation of (dependence on?) shallow groundwater (e.g. RRG, Mensforth et al. 1994)





# MDB floodplain tree condition

---

- Declining floodplain tree condition throughout MDB, particularly in agricultural areas (e.g. Banks 2006; Cunningham *et al.* 2011)
- Research focus on altered flow/flooding regimes and salinity as drivers of decline in Sthn MDB (e.g. Cunningham *et al.* 2011)
- Nthn MBD systems less studied
  - streams ephemeral with significant periods of no-flow
  - recent studies indicate importance of shallow groundwater for floodplain tree condition (Reardon-Smith 2011; Kath 2012; Fritz 2013)
- Shallow groundwater systems may provide an important drought buffer for such ecosystems (e.g. Elmore *et al.* 2006)

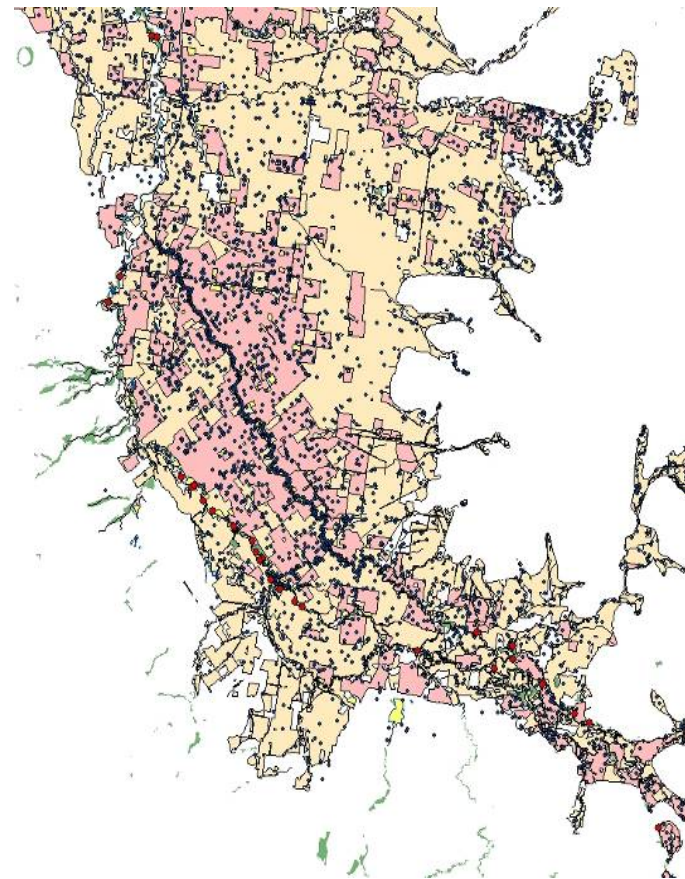






# Groundwater use in Condamine

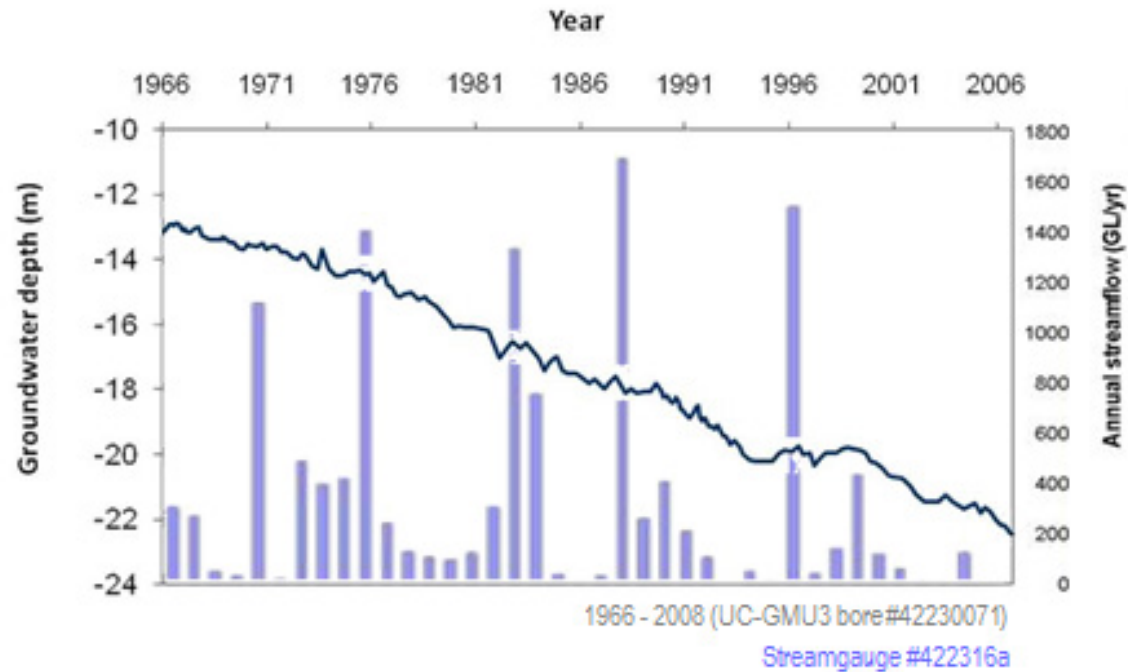
- Irrigation development since 1950s
- Dependent on surface water, groundwater & overland flow
- Managed (GMUs), but significant groundwater decline & lack of recharge evident (CSIRO 2008)



- Groundwater worth ~ \$34 billion per year in Australia (Deloitte Access Economics 2013)

# Groundwater decline in Condamine

- Decline in groundwater levels in shallow unconfined alluvial aquifers through irrigated cropping areas of the ntnh MDB



- Comparable to significant groundwater overdraft reported elsewhere in the world (e.g. Gleeson *et al.* 2012)



# Ecological consequences of groundwater decline

- Ecological consequences of groundwater change could be substantial:
  - long term consequences due to time lags/long response times
  - potentially difficult to reverse; e.g. aquifer collapse; salinity intrusion; shifts in ecosystem type/function (Busch and Smith 1995; Stromberg et al. 1996; Karam et al. 2012; Mora et al. 2013)
  - could greatly increase ecological vulnerability to other threats, such as future droughts (e.g. Elmore et al 2006)

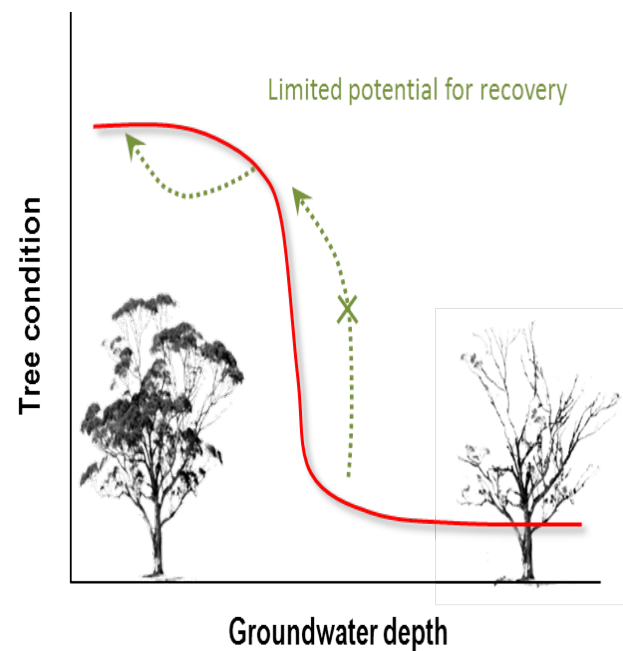
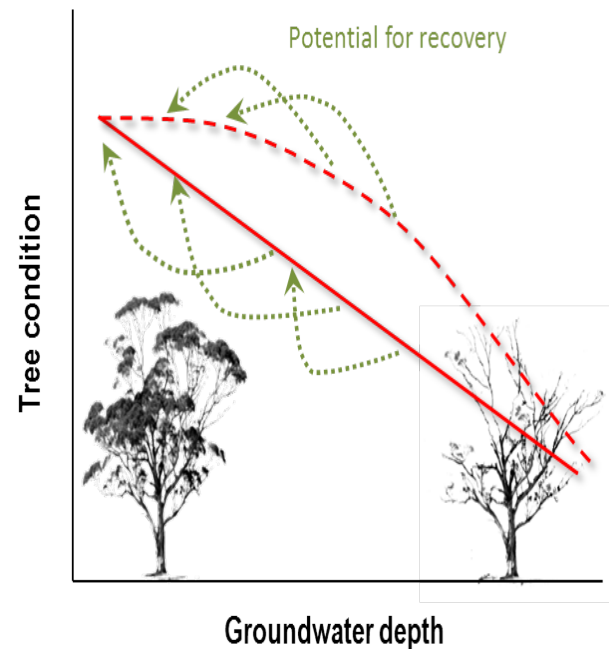


Source: <http://ausinpix.com/>



# Problem

- Resilience theory suggests 'tipping points' or thresholds important (Baker & King 2010; Briske et al. 2010)
  - regime shifts to alternative states (altered composition and function)
  - increased degradation risk
  - altered ecosystem goods and services
  - increased management effort and costs (and potential for poor success)
- But identification of thresholds tricky







# Questions

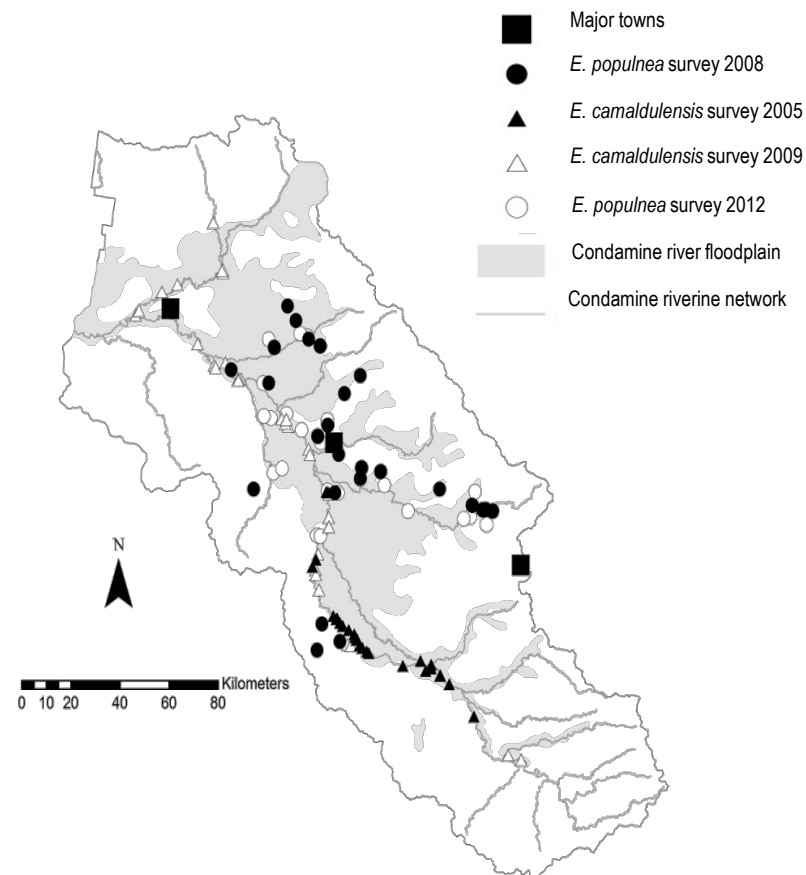
- Given the range of tree condition and groundwater depths in the Condamine catchment:
  - are tree condition responses for *Eucalyptus camaldulensis* and *E. populnea* to groundwater change *gradual* (linear/ curvilinear) or *threshold-like* (non-linear)?
  - if non-linear, can groundwater depth thresholds for tree condition be identified?





## Methods - field

- 118 sites surveyed in different years (2005, 2008, 2009 and 2012)
  - River red gum (Reardon-Smith 2011; Kath 2012)
  - Poplar box (Batterham 2008; Fritz 2013)
- Common tree canopy condition assessment methodology
  - site level Average Foliage Index (Banks 2006) / 'crown vigour' (Cunningham *et al.* 2007)





# Methods – modelling

---

- Boosted regression tree (BRT) (Elith 2008; Ridgeway 2012) and threshold identification approaches (quantile regression with GUIDE and TITAN) (Baker & King 2010, Kail et al. 2008)
- BRT model included:
  - Survey year
  - Tree species
  - Lateral river connectivity index
  - Upstream area of nearest stream segment (m<sup>2</sup>)
  - Groundwater depth (m) (1987, 2000, 2005, 2009, 2012)
  - Groundwater flow system
  - Groundwater depth decline (m) (1987–2009)
  - Mean annual rainfall (mm)
  - Tree density at site (tree/ha)

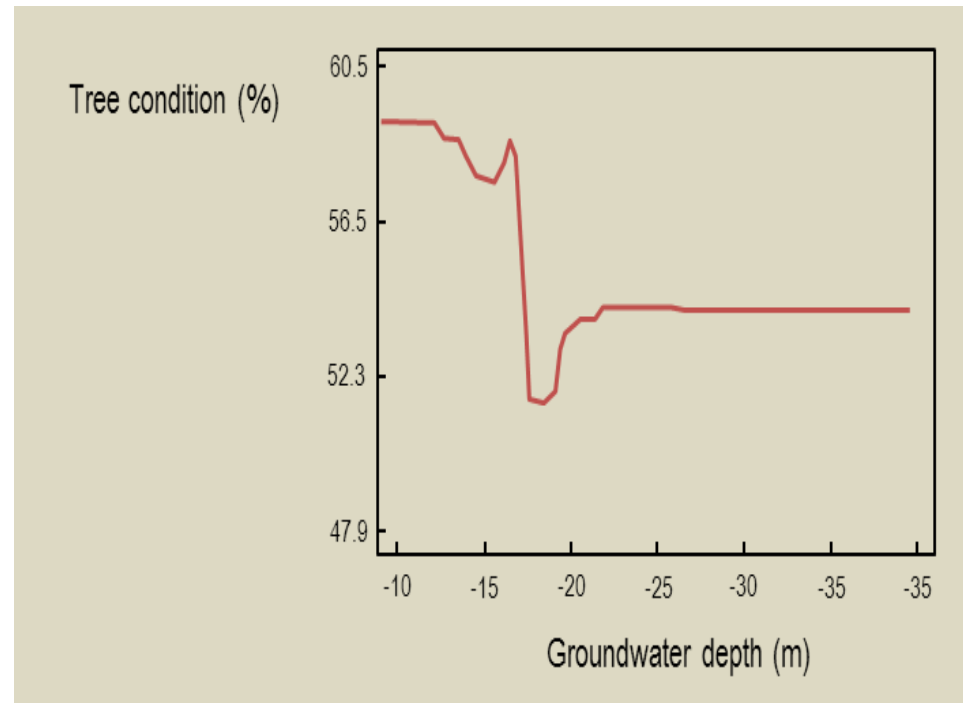




# Results


- Tree condition-groundwater depth threshold relationship indicated in BRT model
- Groundwater depth explained 24% of variation in tree condition in BRT model when all predictor variables accounted for

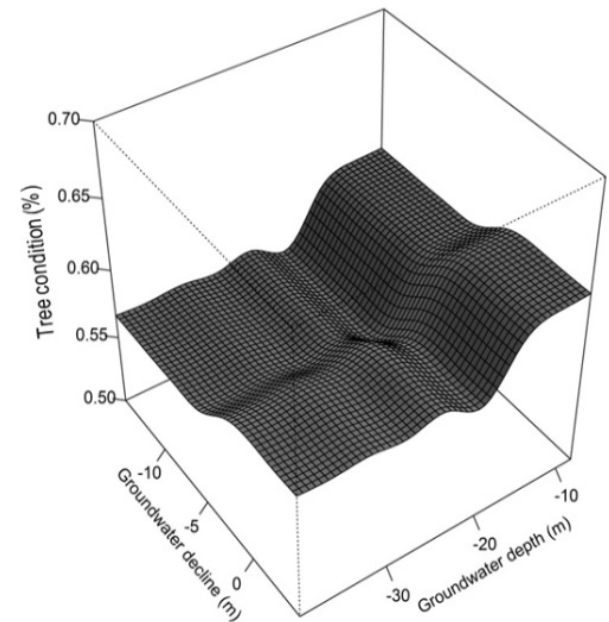
BRT plot showing relationship between floodplain tree condition (*E. camaldulensis* and *E. populnea* combined) and groundwater depth





# Results

- Thresholds identified for both *E. camaldulensis* and *E. populnea*:
  - *E. camaldulensis* thresholds from 12.1 – 22.6 m (90% c.i.)
  - *E. populnea* thresholds from 12.6 – 26.6 m (90% c.i.)
- Consistent finding regardless of threshold identification method used
- Other thresholds may also be important:
  - rate of groundwater decline 
  - groundwater quality (Cunningham et al 2011; Kath et al. (in prep.))



# Discussion

---

- Acknowledge others factors influence tree condition; e.g. grazing, insect herbivory, pesticides, fire regimes
- However, potential for groundwater to become a *critical driver* of ecosystem change; likely where:
  - increasing incidence and severity of drought with climate change
  - ongoing pressure on groundwater resources likely
  - altered susceptibility of riverine eucalypts to drought (current study)
  - increasing potential for population failure?
- Recovery less likely if threshold exceeded & increased potential for shift to alternative ecological state
  - e.g. *E. camaldulensis*  $\Rightarrow$  *Acacia stenophylla* dominant woodlands

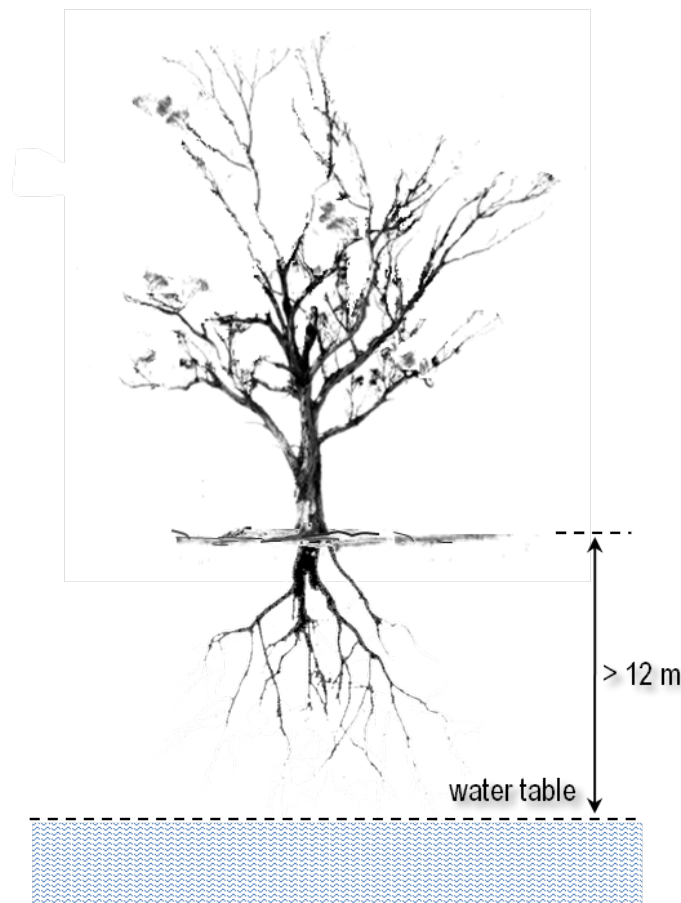






# Conclusions

- Non-linear response to groundwater depth identified for *Eucalyptus camaldulensis* and *E. populnea* tree condition in Condamine
- Minimum groundwater depth thresholds predicted:
  - ~12 m for *Eucalyptus camaldulensis*
  - ~12.5 m for *E. populnea*
- Future directions:
  - mechanisms behind thresholds
  - confirmation of thresholds (e.g. isotope studies)
  - generality of response (e.g. other landscapes, interactions with salinity; other species)



# Significance

---

- Approach represents a **repeatable method** to:
  - **quantify ecological response thresholds** along environmental gradients
  - **identify safe operating limits** for sustainable resource management
- Potential **evidence for improved decision making** (e.g. water extraction limits) to support resilient ecosystems
  - especially in regions where groundwater decline driven by increasing water demand and drying climates is predicted

UNIVERSITY  
OF SOUTHERN  
QUEENSLAND



UNIVERSITY OF  
CANBERRA





# Acknowledgements

---

This research was supported through the Australian Government's Collaborative Research Networks (CRN) program (MDB*utures*-CRN).

The studies on which the modeling is based were supported through the APA Postgraduate Research Scholarship program (KRS and JK) and CSIRO Climate Adaptation Flagship Top Up Scholarship (JK)

Megan Batterham and Lisa Fritz provided additional data on poplar box systems and Elad Dafny provided additional hydrological modeling.

We also thank the landholders of the Condamine for allowing us to undertake surveys on their properties.







ELSEVIER

Contents lists available at ScienceDirect

## Global Ecology and Conservation

journal homepage: [www.elsevier.com/locate/gecco](http://www.elsevier.com/locate/gecco)

## Original research article

## Groundwater decline and tree change in floodplain landscapes: Identifying non-linear threshold responses in canopy condition

J. Kath<sup>a,b,c,\*</sup>, K. Reardon-Smith<sup>b,c,d</sup>, A.F. Le Brocque<sup>b,c</sup>, F.J. Dyer<sup>a</sup>, E. Dafny<sup>e</sup>,  
L. Fritz<sup>c</sup>, M. Batterham<sup>c</sup><sup>a</sup> Institute for Applied Ecology and Collaborative Research Network for Murray-Darling Basin Futures, University of Canberra, ACT 2601, Australia<sup>b</sup> International Centre for Applied Climate Sciences, University of Southern Queensland, Toowoomba QLD 4350, Australia<sup>c</sup> Faculty of Health, Engineering and Sciences, University of Southern Queensland, Toowoomba QLD 4350, Australia<sup>d</sup> Digital Futures CRN, University of Southern Queensland, Toowoomba QLD 4350, Australia<sup>e</sup> National Centre for Engineering in Agriculture, University of Southern Queensland, Toowoomba, QLD 4350, Australia

## ARTICLE INFO

## Article history:

Received 26 June 2014

Received in revised form 5 September 2014

Accepted 5 September 2014

Available online 22 September 2014

## Keywords:

Canopy condition

Dieback

Drought

Tipping point

Ecological threshold

Groundwater dependent ecosystems

## ABSTRACT

Groundwater decline is widespread, yet its implications for natural systems are poorly understood. Previous research has revealed links between groundwater depth and tree condition; however, critical thresholds which might indicate ecological 'tipping points' associated with rapid and potentially irreversible change have been difficult to quantify. This study collated data for two dominant floodplain species, *Eucalyptus camaldulensis* (river red gum) and *E. populnea* (poplar box) from 118 sites in eastern Australia where significant groundwater decline has occurred. Boosted regression trees, quantile regression and Threshold Indicator Taxa Analysis were used to investigate the relationship between tree condition and groundwater depth. Distinct non-linear responses were found, with groundwater depth thresholds identified in the range from 12.1 m to 22.6 m for *E. camaldulensis* and 12.6 m to 26.6 m for *E. populnea* beyond which canopy condition declined abruptly. Non-linear threshold responses in canopy condition in these species may be linked to rooting depth, with chronic groundwater decline decoupling trees from deep soil moisture resources. The quantification of groundwater depth thresholds is likely to be critical for management aimed at conserving groundwater dependent biodiversity. Identifying thresholds will be important in regions where water extraction and drying climates may contribute to further groundwater decline.

© 2014 The Authors. Published by Elsevier B.V. This is an open access article under the CC BY-NC-ND license (<http://creativecommons.org/licenses/by-nc-nd/3.0/>).

UNIVERSITY  
OF SOUTHERN  
QUEENSLAND



UNIVERSITY OF  
CANBERRA

*Thank you*





## Literature (selected) cited

---

- Armstrong, J.L. *et al.*, 2009. The effect of regulating the Lachlan River on the Booligal Wetlands - the floodplain red gum swamps. UNSW, Sydney. Available at [http://www.wetrivers.unsw.edu.au/Booligal\\_Lachlan\\_River\\_Report.pdf](http://www.wetrivers.unsw.edu.au/Booligal_Lachlan_River_Report.pdf)
- Baker, M.E. and King, R.S., 2010. A new method for detecting and interpreting biodiversity and ecological community thresholds. *Method. Ecol. Evol.* 1, 25-37.
- Briske, D.D. *et al.*, 2010. Catastrophic thresholds: a synthesis of concepts, perspectives and applications. *Ecology and Society* 15: 37.
- CSIRO, 2008. *Water availability in the Condamine-Balonne. A report to the Australian Government from the CSIRO Murray-Darling Basin Sustainable Yields Project.* Commonwealth Scientific and Industrial Research Organization (CSIRO), Canberra ACT.
- Cunningham, S.C. *et al.*, 2007. Quantitative assessment of stand condition and its relationship to physiological stress in stands of *Eucalyptus camaldulensis* Myrtaceae. *Aust. J. of Bot.* 55, 692–699.
- Cunningham, S.C. *et al.*, 2011. Groundwater change forecasts widespread forest dieback across an extensive floodplain system. *Freshwater Biol.* 56, 1494–1508.
- Colloff, M.J. and Baldwin, D.S., 2010. Resilience of floodplain ecosystems in a semi-arid environment. *Rangeland Journal* 32, 305–314
- Elith, J. *et al.*, 2008. A working guide to boosted regression trees. *J. Anim. Ecol.* 77, 802–813.
- Elmore, A.J. *et al.*, 2006. Decline in alkali meadow vegetation cover in California: the effects of groundwater extraction and drought. *Journal of Applied Ecology* 43, 770–779.
- Gleeson *et al.*, 2012. Water balance of global aquifers revealed by groundwater footprint. *Nature* 488, 197-200
- Kail, J. *et al.*, 2012. Limiting factors and thresholds for macroinvertebrate assemblages in European rivers: empirical evidence from three datasets on water quality, catchment urbanization, and river restoration. *Ecol. Indic.* 18, 63–72.
- Mensforth, L.J., *et al.*, 1994. Sources of water used by riparian *Eucalyptus camaldulensis* overlying highly saline groundwater. *Oecologia* 100, 21-28.
- Ridgeway, G., 2012. GBM: generalized boosted regression models. R package version 1.6-709 3.2. Available at: <http://cran.r-project.org/web/packages/gbm/index.html>