

A NEW SUB-PERIOD-MINIMUM CATAclySMIC VARIABLE WITH PARTIAL HYDROGEN DEPLETION AND EVIDENCE OF SPIRAL DISK STRUCTURE

C. LITTLEFIELD¹, P. GARNAVICH¹, A. APPLGATE², K. MAGNO¹, R. POGGE³, J. IRWIN⁴,
G. H. MARION⁴, J. VINKÓ^{5,6}, AND R. KIRSHNER⁴

¹ Physics Department, University of Notre Dame, Notre Dame, IN 46556, USA

² Physics Department, Georgian Court University, Lakewood, NJ 08701, USA

³ Department of Astronomy, Ohio State University, 140 West 18th Avenue, Columbus, OH 43210, USA

⁴ Harvard-Smithsonian Center for Astrophysics, Cambridge, MA 02138, USA

⁵ Department of Optics, University of Szeged, Dóm tér 9, H-6720 Szeged, Hungary

⁶ Astronomy Department, University of Texas, Austin, TX 78712, USA

Received 2012 November 17; accepted 2013 March 8; published 2013 April 19

ABSTRACT

We present time-resolved spectroscopy and photometry of CSS 120422:111127+571239 (=SBS 1108+574), a recently discovered SU UMa-type dwarf nova whose 55 minute orbital period is well below the cataclysmic variable (CV) period minimum of ~ 78 minutes. In contrast with most other known CVs, its spectrum features He I emission of comparable strength to the Balmer lines, implying a hydrogen abundance less than 0.1 of long-period CVs—but still at least 10 times higher than that in AM CVn stars. Together, the short orbital period and remarkable helium-to-hydrogen ratio suggest that mass transfer in CSS 120422 began near the end of the donor star’s main-sequence lifetime, meaning that this CV is a strong candidate progenitor of an AM CVn system as described by Podsiadlowski et al. Moreover, a Doppler tomogram of the H α line reveals two distinct regions of enhanced emission. While one is the result of the stream–disk impact, the other is probably attributable to spiral disk structure generated when material in the outer disk achieves a 2:1 orbital resonance with respect to the donor.

Key words: novae, cataclysmic variables – stars: dwarf novae – stars: evolution – stars: individual (CSS 120422:111127+571239, SBS 1108+574)

Online-only material: color figure

1. INTRODUCTION

1.1. Cataclysmic Variables and the Period Minimum

Cataclysmic variables (CVs) are close binary systems in which a white dwarf (WD) accretes matter from a companion star which overflows its Roche lobe. Very few CVs have orbital periods below the so-called period minimum, which has been observed to be ~ 78 minutes (Hellier 2001). As Kolb & Baraffe (1999) explain, the period minimum is a consequence of emerging electron degeneracy in the donor star and the strong, inverse relationship between donor-star density and a CV’s orbital period. When a non-degenerate donor sheds some of its mass, its density increases, prompting the CV’s orbital period to shrink. A degenerate donor, however, has exactly the opposite response to mass loss, so once the secondary star becomes degenerate, it will have reached its maximum density—and thus the shortest orbital period possible for the system. Thereafter, the CV will evolve toward a longer orbital period, its period having “bounced” off the minimum.

Nevertheless, a handful of CVs, some with orbital periods as short as several minutes, defy the 78 minute period minimum. Almost every CV in this category is an AM CVn-type system, featuring a rich helium spectrum lacking even the slightest hint of hydrogen. Helium-enhanced stars are denser than their hydrogen-dominated counterparts, so they adhere to a shorter period minimum (Augusteijn et al. 1996).

There are three theoretical avenues of formation for these unusual stars (Nelemans et al. 2010 and references therein). First, the distance between two detached WDs might decrease as a result of gravitational radiation, causing the lower-mass companion to eventually overflow its Roche lobe. Second, the

donor might be a low-mass, helium-fusing star. Third, if mass transfer were to commence near the end of the main-sequence lifetime of the donor star, the secondary star would shed its hydrogen envelope, exposing the relatively dense, hydrogen-deficient interior of the star (Sienkiewicz 1984; Tutukov et al. 1985). Spectroscopically, the helium-to-hydrogen ratio would gradually increase as the system continued to evolve. Unlike the first two models, the evolved-main-sequence-donor model predicts the presence of some hydrogen in the donor star (Podsiadlowski et al. 2003; Breedts et al. 2012).

Oddly, a few CVs are below the period minimum, but with strong hydrogen lines in their spectra, they cannot be AM CVn stars. Instead, these stars belong to the SU UMa sequence of CVs; consequently, while in outburst, they display superhumps—periodic photometric oscillations attributed to a precessing, eccentric accretion disk—whose period is within several percent of the orbital period. However, the secondary stars in the sub-period-minimum SU UMa systems are not the garden-variety donor stars found in most CVs above the minimum. In two of these CVs, EI Psc (Thorstensen et al. 2002) and V485 Cen (Augusteijn et al. 1996), the He I 667.8 nm to H α ratio is elevated with respect to CVs above the period minimum, and the secondary star is plainly visible in optical and near-infrared spectra. A third system below the minimum, SDSS J150722.30+523039.8, has very weak helium lines and shows no trace of the donor, leading Littlefair et al. (2007) to conclude that the secondary is a brown dwarf.

Another sub-period-minimum star, CSS 100603:112253–111037 (hereinafter CSS 100603), is a hybrid of those three systems. Like EI Psc and V485 Cen, its spectrum has strong emission from both hydrogen and neutral helium. Like the brown-dwarf system, though, the donor star is invisible in

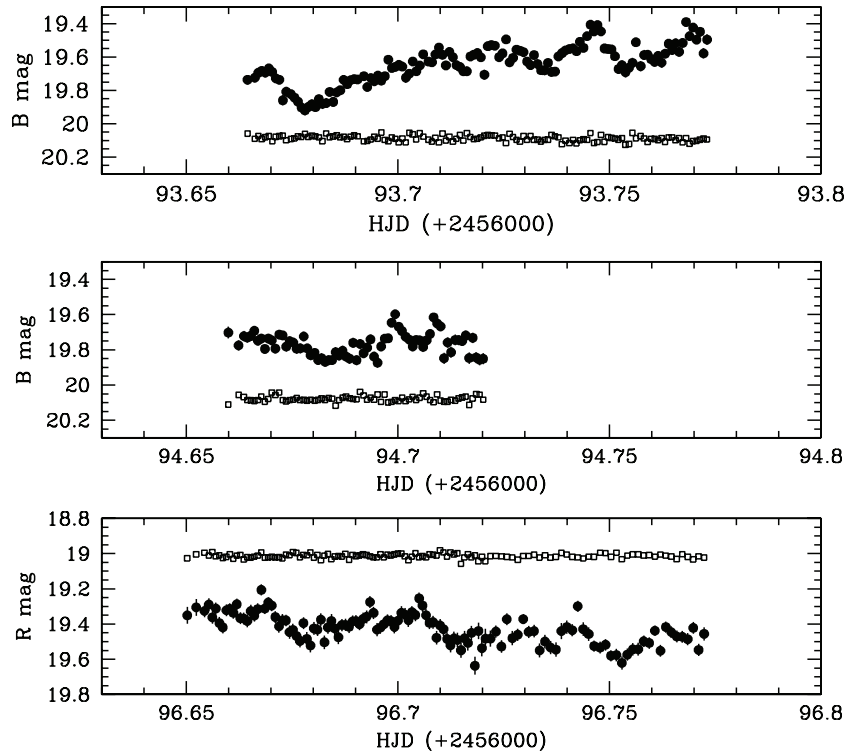


Figure 1. VATT light curves of CSS 120422 obtained in 2012 June. The open circles show the light curve of the check star, offset by adding 1.0 mag. The waveform is highly variable, but the double-peaked structure visible in the phase plot in Figure 5 is intermittently visible. Flickering is evident in all three light curves.

spectra, and the estimated mass ratio is quite low. Breedt et al. (2012) argue that CSS 100603 is probably an AM CVn progenitor in which the donor star is an evolved-main-sequence star.

Here, we present observations of CSS 120422, a very short period system similar to CSS 100603, but with several interesting differences.

1.2. CSS 120422:111127+571239

On 2012 April 22, the Catalina Sky Survey (Drake et al. 2009) detected an outburst of CSS 120422:111127+571239 (hereinafter CSS 120422), a previously unreported CV. With a peak observed brightness of $V \approx 15.4$, the system brightened by at least 4 mag from its typical brightness in the Catalina data.⁷ Even prior to the discovery of its very short orbital period, the system garnered attention because it is remarkably blue during quiescence, even for a CV (Kato 2012). The VSNET collaboration (Kato et al. 2004) immediately launched an extensive observing campaign, finding an initial superhump period of 56 minutes, well below the 78 minute period minimum for hydrogen-rich CVs (Kato et al. 2013). Although most known CVs below the minimum are AM CVn systems, spectroscopy revealed a hydrogen-dominated spectrum, eliminating the AM CVn hypothesis (Garnavich et al. 2012). After the system returned to quiescence, E. Pavlenko et al. (in preparation; preliminary findings discussed in Kato et al. 2013) reported unusually strong helium lines in CSS 120422’s quiescent spectrum, as did Carter et al. (2013), who obtained spectra before and during the 2012 outburst.

⁷ Because CSS 120422 was discovered at an unknown point after the start of its outburst, the actual peak magnitude is unknown.

2. OBSERVATIONS

2.1. VATT Photometry

We observed CSS 120422 with the Vatican Advanced Technology Telescope (VATT) and VATT4K CCD imager on 2012 June 15, 16, and 18 (UT), performing time-resolved photometry through a Bessell B filter on the first two nights and a Bessell R filter on the final night. Clouds prevented observations on June 17. The CCD pixels were binned 2×2 , and only the central 500 rows were read out in order to reduce the overhead on each exposure. Generally, exposures were 60 s long with a readout time of 11 s, but the seeing degraded during the second half of the final night, so the exposure time was increased to 100 s. The CCD images were bias-subtracted and flat-field corrected using dithered exposures taken during twilight.

We used a star 2 arcmin south of CSS 120422 as a comparison star (USNO-B1.0 position R.A. = 11:11:26.83, decl. = +57:12:38.9 J2000). The Sloan Digital Sky Survey (SDSS) photometric catalog magnitudes for the comparison star convert to $B = 16.23 \pm 0.05$ and $R = 14.62 \pm 0.04$ mag. Located 1 arcmin west of the comparison star, the check star has SDSS converted magnitudes of $B = 19.1$ and $R = 18.0$. Aperture photometry using DAOPHOT in IRAF produced the light curves shown in Figure 1.

2.2. FLWO Spectroscopy

We obtained spectra of CSS 120422 with the 1.5 m Tillinghast telescope at the Fred L. Whipple Observatory on 2012 May 12 and 13 (UT), roughly three weeks after the initial detection of the outburst. The FAST spectrograph utilized a 300 line mm^{-1} grating and covered the spectral range between 360 nm and 750 nm. On May 12, a single 30 minute exposure with a 3 arcsec wide slit was obtained. During the following night, a series of

Table 1
Spectroscopy Log

Date (UT)	HJD +2456000	Exposure (s)	Instrument/ Telescope
2012 May 12	59.65	1800	FAST/Tillinghast
2012 May 13	60.6356	420	FAST/Tillinghast
2012 May 13	60.6412	420	FAST/Tillinghast
2012 May 13	60.6462	420	FAST/Tillinghast
2012 May 13	60.6512	420	FAST/Tillinghast
2012 May 13	60.6570	420	FAST/Tillinghast
2012 May 13	60.6620	420	FAST/Tillinghast
2012 May 13	60.6670	420	FAST/Tillinghast
2012 May 13	60.6727	420	FAST/Tillinghast
2012 May 13	60.6777	420	FAST/Tillinghast
2012 Jun 16	94.6645	400	MODS/LBT
2012 Jun 16	94.6680	400	MODS/LBT
2012 Jun 16	94.6716	400	MODS/LBT
2012 Jun 16	94.6751	400	MODS/LBT
2012 Jun 16	94.6786	400	MODS/LBT
2012 Jun 16	94.6821	400	MODS/LBT
2012 Jun 16	94.6856	400	MODS/LBT
2012 Jun 16	94.6891	400	MODS/LBT
2012 Jun 16	94.6926	400	MODS/LBT
2012 Jun 16	94.6962	400	MODS/LBT
2012 Jun 16	94.6997	400	MODS/LBT
2012 Jun 16	94.7032	400	MODS/LBT
2012 Jun 16	94.7068	400	MODS/LBT
2012 Jun 16	94.7103	400	MODS/LBT
2012 Jun 16	94.7138	400	MODS/LBT
2012 Jun 16	94.7173	400	MODS/LBT

nine images, each with an exposure time of 420 s, was taken through a 2 arcsec wide slit. The seeing was approximately 1.5 arcsec, and the slit was set to a position angle of 90° on both nights. Table 1 gives a log of the spectral observations.

The CCD images were bias subtracted and flat-field corrected using normalized internal lamps. Having been extracted using the “twod” package in IRAF,⁸ the spectra were wavelength calibrated using images of an internal He–Ne–Ar lamp interspersed with the stellar spectra. The spectra were all obtained at an airmass less than 1.15, were flux-calibrated using a spectrum of Feige 34 taken at an airmass of 1.03.

The combined spectrum, displayed in Figure 2, reveals a blue continuum with a conspicuous Balmer jump. Weak emission lines of H α and He I at both 587.5 nm and 667.8 nm are visible in addition to broad Balmer absorption features with emission cores, a spectrum typical of a hydrogen-accreting dwarf nova declining from outburst (Garnavich et al. 2012). Because the system was returning to quiescence, its absorption-dominated outburst spectrum was in the process of transitioning back into an emission-line spectrum during our observations. Consequently, the simultaneous presence of emission and absorption undoubtedly diluted the strength of many lines.

2.3. LBT Spectroscopy

We obtained spectra of CSS 120422 with the Large Binocular Telescope (LBT) and Multi-Object Dual Spectrograph (MODS; Pogge et al. 2010) on 2012 June 16 (UT). The sixteen 400 s exposures employed a 1.0 arcsec slit which was oriented to the

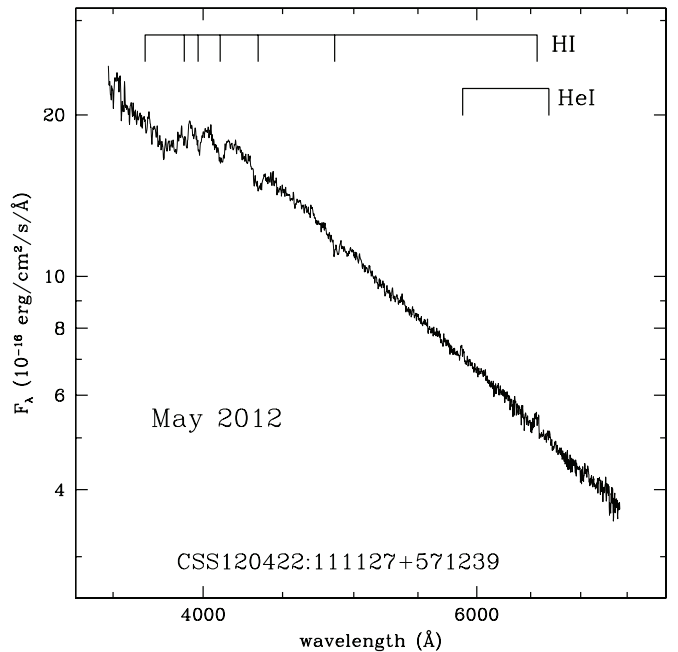


Figure 2. FLWO spectrum taken in 2012 May when the star was declining from outburst. Weak H α , He I 587.5 nm, and He I 667.8 nm emission lines are visible, and H β shows a combination of emission and absorption. Absorption dominates the higher-level Balmer lines.

parallactic angle in order to minimize slit losses. The spectra cover a time period of about 1 hr and 15 minutes, or about 1.3 orbits of the binary. Table 1 presents a log of the LBT spectral observations.

The red and blue MODS CCD spectra were bias subtracted and flat-field corrected using normalized internal lamp illumination images. As with the FLWO data, the spectra were extracted using the “twod” package in IRAF. We used an internal neon lamp on the red side and an argon lamp for the blue channel for wavelength calibration, and the star HZ 44 served as the spectrophotometric standard for the flux calibration.

The brightness of CSS 120422 in the LBT data is approximately 2.8 mag fainter than the FLWO spectra obtained in May.

The combined LBT spectrum appears in Figure 3. Similar to the May spectra, a strong blue continuum is obvious, but by June, a wide variety of emission lines had appeared. Double-peaked Balmer and He I emission lines which originate in the accretion disk are evident, as are weaker lines of intermediate-mass elements, especially Si II and Ca II. The H α profile is well fit by two Gaussians separated by 1200 km s⁻¹, each with an FWHM of 940 km s⁻¹. The center of mass of the line is shifted to the red by 50 km s⁻¹.

The near-equal strength of the He I and Balmer lines is particularly striking. In normal, hydrogen-rich CVs, the He I emission is much weaker than the hydrogen lines, and in AM CVn systems, He I dwarfs the negligible hydrogen emission. However, in CSS 120422, the average total flux of the He I 587.5 nm line is 20% higher than that of H β . To put this in perspective, the H β line is typically three times as strong as the He I 587.5 nm feature in CVs.

As alluded to earlier, other systems, such as CSS 100603 and EI Psc, exhibit He I-to-H ratios comparable to that of CSS 120422. Williams & Ferguson (1982) modeled the line strengths in several long-period CVs and found that they were somewhat depleted in hydrogen compared to the Sun. Specifically, the He I 587.6-to-H β flux ratio observed in long-period CVs

⁸ IRAF is distributed by the National Optical Astronomy Observatory, which is operated by the Association of Universities for Research in Astronomy, Inc., under cooperative agreement with the National Science Foundation.

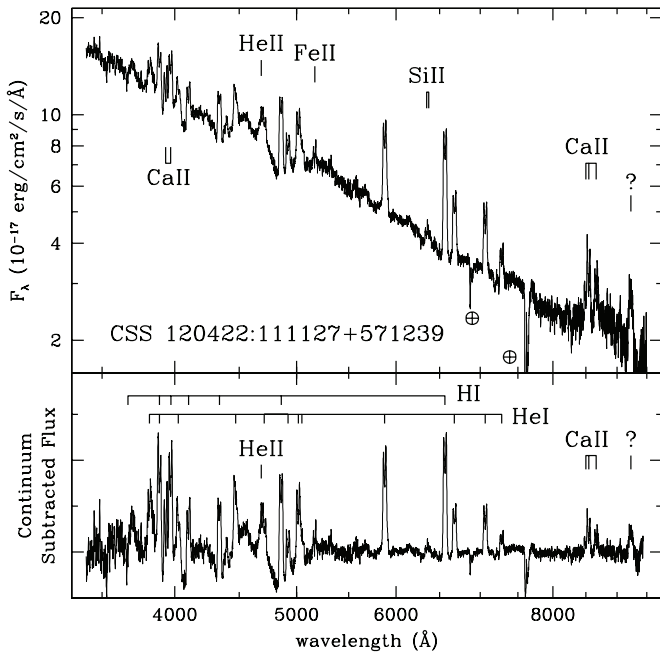


Figure 3. LBT spectrum of CSS 120422 obtained in 2012 June after the system had faded from its outburst. The spectrum is the sum of sixteen 420 s exposures. In the bottom panel, the strong continuum which dominates the top panel has been subtracted. The simultaneous presence of strong Balmer and He I emission is an immediate indicator that the system is unusual. Ca II and Si II emission features are also conspicuous. The weak, highly phase-dependent He II emission at 468.6 nm is partially blended with the He I 471.3 nm line.

was about 0.2 ± 0.1 , implying a hydrogen abundance $[H] = \log_{10}(H/He)/\text{Solar}(H/He) = -3.5$. Nagel et al. (2009) concluded that significant $H\alpha$ emission lines are present at $[H] = -5$ and that AM CVn stars must have $[H] < -6$ for hydrogen emission to be undetectable (see Figure 6). With some interpolation, these studies indicate that in CSS 120422, which features a He I 587.6 nm line of similar strength to the $H\alpha$ line, the hydrogen abundance is $[H] \approx -4.5$. We also measured this line ratio for CSS 100603 from the public SDSS spectrum and found a hydrogen abundance that is similar to CSS 120422. The He I 587.6 nm line was not measured by Thorstensen et al. (2002), but the He I 667.8 nm line strength suggests that EI Psc has a hydrogen abundance which is a factor of three higher in comparison with these recently discovered objects. Figure 4 plots these data.

In CSS 120422, Ca II emission from the infrared triplet and HK lines is also quite prominent. Additionally, we identify Si II 634.7/637.1 nm lines, both of which have been observed in the AM CVn star CP Eri (Groot et al. 2001). The feature at 923 nm may be due to Mg II, but the line expected at 788.5 nm is not detected (Marsh et al. 1991). Alternatively, it might be a Paschen line. There is also a weak He II 468.6 nm feature blended with the He I 471.3 nm line, and on the red side of the He I 587.5 nm line, there is weak emission which may be due to low-velocity Na I.

CSS 120422’s spectrum contains more than just this forest of emission lines. In particular, the $H\beta$ and $H\gamma$ lines both sit within broad absorption troughs in the continuum. (To a lesser extent, this is also true of the $H\alpha$ line, too.) In other short-period CVs, the WD is responsible for producing similar depressions in the spectrum at these wavelengths (Rodríguez-Gil et al. 2005), so we attribute these features in CSS 120422 to pressure-broadened absorption from the WD’s photosphere. These absorption lines

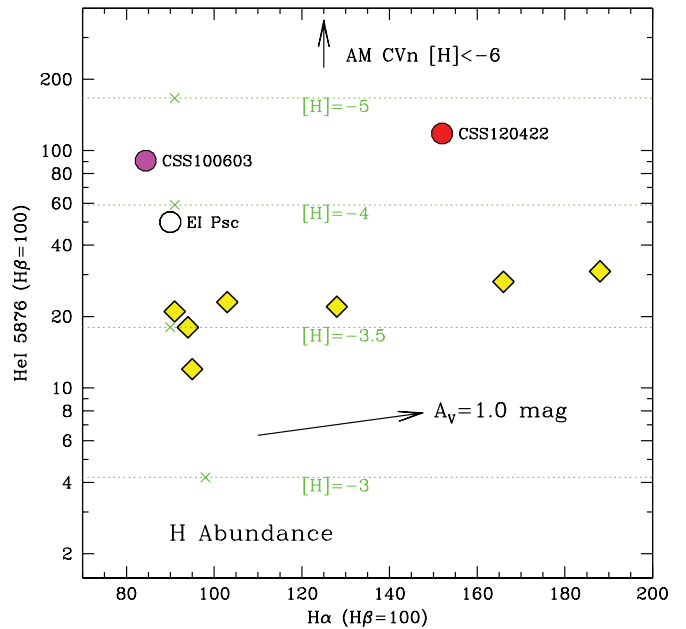


Figure 4. He I 587.6 nm line flux vs. the $H\alpha$ flux relative to the strength of $H\beta$. The diamonds show the long-period CVs studied by Williams & Ferguson (1982), while the circles show new, short-period CVs. No correction has been made for reddening, and the effect of 1 mag of visual extinction is indicated by an arrow. The He I 587.6 nm line strength is estimated from the flux of the 667.8 nm line. The dotted lines indicate hydrogen abundance relative to solar based on Williams & Ferguson (1982) and Nagel et al. (2009) models. The “x” on each dotted line shows where the $H\alpha$ flux is predicted by Williams & Ferguson (1982).

(A color version of this figure is available in the online journal.)

suggest that the WD must contribute much of the system’s overall optical flux (e.g., Patterson et al. 2008), likely indicating a low mass-transfer rate during quiescence. If this inference is correct, it would account for the unusually blue quiescent color noted by Kato (2012). A quiescent accretion disk will usually be cooler than the WD, causing the overall flux of the system to be redder, but in a system with a relatively low rate of mass transfer, the disk will be relatively tenuous and dim, enabling the WD’s blue continuum to overwhelm the disk’s meager contribution.

3. ANALYSIS

3.1. VATT Photometry

3.1.1. Orbital Period, Ephemeris, and Light-curve Morphology

We removed a linear trend from each night of VATT photometry and created a power spectrum for all three nights using the phase-dispersion-minimization (PDM) algorithm (Stellingwerf 1978). PDM scans a user-selected period range, calculates a phase plot for each trial period, divides the phase plot into a user-specified number of bins, and quantifies the total amount of scatter in the bins. The best candidate periods will have the least amount of scatter in their phase plots, a technique which is well suited to analyzing non-sinusoidal signals, such as the waveform of CSS 120422’s orbital period. In the PDM power spectrum (see Figure 5), the strongest signal is at 55.36 ± 0.13 minutes, but there is also a competing alias at 53.28 ± 0.12 minutes. Using a completely independent data set, Kato et al. (2013) report the longer of these two periods as the orbital period and find no evidence of the shorter period (T. Kato 2012, private communication). Likewise, Carter et al. (2013) announced a photometric period of 55.36 ± 0.03 minutes.

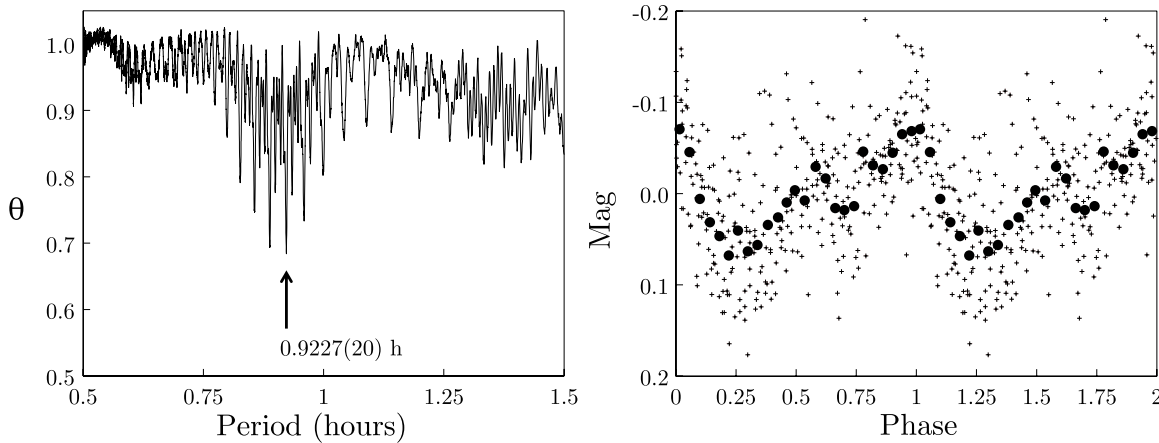


Figure 5. Left: power spectrum of three nights of VATT photometry using the phase-dispersion-minimization algorithm. Candidate periods appear as local minima. Right: phase plot of the VATT photometry using the 0.9227 hr period. The dark circles are 0.04 phase bins. The waveform is weakly double peaked, consistent with theoretical models of CVs with spiral shocks at the 2:1 resonance in the disk (see the text). As Figure 1 illustrates, there is considerable variation in the light curve from orbit to orbit.

We show the phase plot of all three nights of data (both *B* and *R* bands) in Figure 5 using the ephemeris of

$$T_{\max}(\text{BJD}) = 2456093.746 + 0.03845(2)E,$$

where phase zero corresponds with the peak in the light curve.

The phased light curve is very sawtoothed, with a gradual rise, a sharp peak, and then a rapid drop in brightness. When the data are binned to improve the signal-to-noise ratio, the waveform displays a weakly double-humped structure, with two distinct maxima per orbital cycle. In this regard, the light curve resembles that of WZ Sge-type CVs. The maximum at phase zero and the broad minimum centered on phase ~ 0.25 are both readily apparent, but the maximum seen near phase ~ 0.55 and the ensuing minimum around phase ~ 0.7 are much more subtle. The phase plot generated by Kato et al. (2013) is generally similar, but the double-peaked structure is somewhat less apparent.

The morphologies of the individual light curves are remarkably variable from night to night and even from cycle to cycle. For example, the light curve from 2012 June 15 should have contained three minima similar to the one centered on photometric phase ~ 0.2 in the phase plot in Figure 5, but the second one is nearly non-existent. Likewise, on the following night, an expected peak in the light curve did not occur and was followed instead by a comparatively gentle decrease in flux. In the very next cycle, however, the peak returned, and the post-peak dip had a different shape. Clearly, the source of the orbital modulation, which we believe to be tidally induced spiral structure in the outer disk (see Section 4.2.1), is capable of significant variability on timescales of less than 1 hr.

3.1.2. Inferred Mass Ratio

Patterson (1998) reported an empirical relation between a CV’s mass ratio ($q = m_2/m_1$) and its fractional superhump period excess ($\epsilon = [P_{\text{sh}}/P_{\text{orb}}] - 1$). Although the exact physical processes underlying this ϵ - q correlation are unclear, it provides approximate estimates of q using just the orbital and superhump periods, making it a particularly useful technique for analyzing a system whose mass ratio cannot be ascertained by other means. Relying upon a detailed survey of superhumps, Kato et al.

(2009) updated Patterson’s original formula slightly, obtaining $\epsilon = 0.16q + 0.25q^2$, where ϵ is determined using the shortest P_{sh} rather than the mean P_{sh} . Applying the quadratic formula and rejecting the negative root (to ensure a positive value of q) yield a more convenient, explicit function: $q = -0.32 + 2\sqrt{0.0256 + \epsilon}$. Using this formula, a P_{sh} of 55.971 minutes (Kato et al. 2013) and our P_{orb} of 55.36 minutes, we obtain $q = 0.06 \pm 0.01$. However, since the ϵ - q relation in other systems is only approximate, the uncertainty for q is probably greatly underestimated.

The correlation between ϵ and q underscores that the 53 minute signal in our photometry is an alias of the true period at 55 minutes. If the signal at 53 minutes were the actual orbital period, then $q = 0.24$, a value which would be difficult to reconcile with the complete non-detection of the donor and the low mass ratios of other short-period CVs. Additionally, it would be inconsistent with the evidence of spiral shocks produced by disk material at the 2:1 resonance which, as Section 4.2.1 explains, could form only if $q \lesssim 0.1$.

Kato et al. (2013) point out that a mass ratio of 0.06 is not nearly as extreme as the mass ratios of other short-period dwarf novae, suggesting an unusually dense and massive secondary star which has shed much of its hydrogen envelope via mass transfer. In Section 4.1, we reach a similar conclusion based on our interpretation of the system’s spectrum.

3.2. Spectroscopy

The double-peaked Balmer and He I emission lines in the LBT spectra exhibit radial velocity variations over the photometric period (Figure 7). In contrast to many AM CVn stars and CSS 100603, these lines do not show stationary, central peaks in our trailed spectra, but there is an “S-wave” present between the peaks of each of these lines. The single-peaked He II emission shows a particularly prominent S-wave for approximately half of the orbit, a feature which we attribute to the bright spot created by the stream-disk collision. The non-appearance of the He II line for over half of the orbit implies that the inclination of the system is sufficiently high that the bright spot rotates behind the disk as seen from Earth. This interpretation agrees well with Carter et al. (2013), who report a moderately high inclination ($63^\circ.8 \pm 1^\circ.0 < i < 78^\circ.6 \pm 0^\circ.6$) based on evidence of a grazing

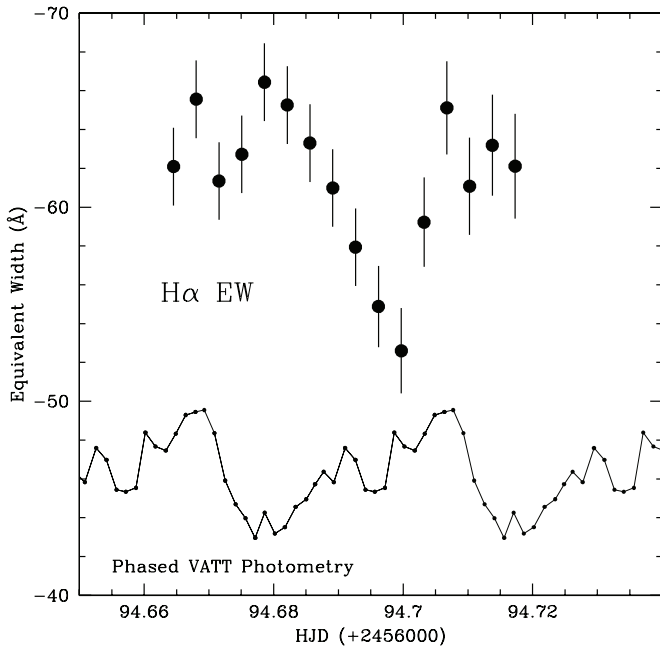


Figure 6. $H\alpha$ equivalent width as a function of time from the LBT spectra. Overplotted at the bottom is the photometric phase plot from the VATT observations.

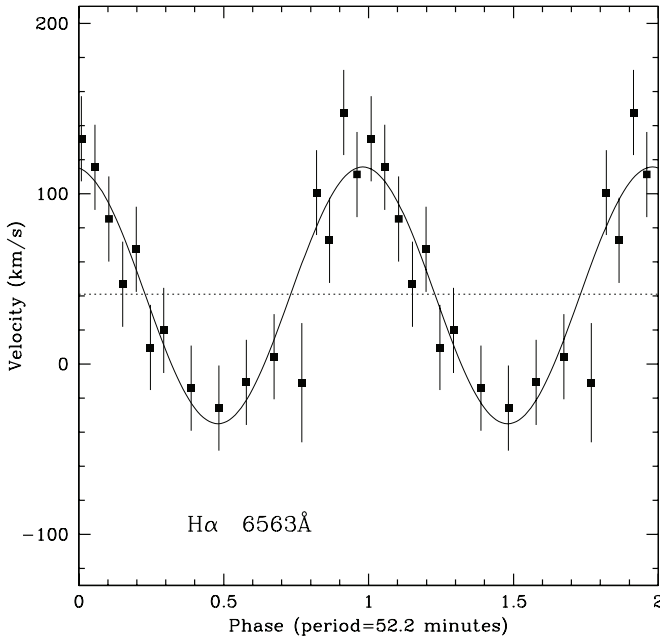


Figure 7. Radial velocity derived from the $H\alpha$ line plotted against phase for a period of 52.2 minutes. The data are shown from the full Gaussian separation of 61 Å.

eclipse of the disk which occurs only when the disk reaches its maximum size during outburst.

3.2.1. Equivalent Width Variation

We estimated the equivalent width (EW) of several of the brightest lines using the “splot” routine in IRAF. Each line was measured several times with slightly different continuum values and the resulting differences were used to estimate an error. Only $H\alpha$ showed significant variation above the noise, and the result is shown in Figure 6 along with the phase plot. The $H\alpha$ EW varies by 20%, with the lowest EW occurring at photometric phase ~ 0.8 , when the orbital modulation nears its peak flux.

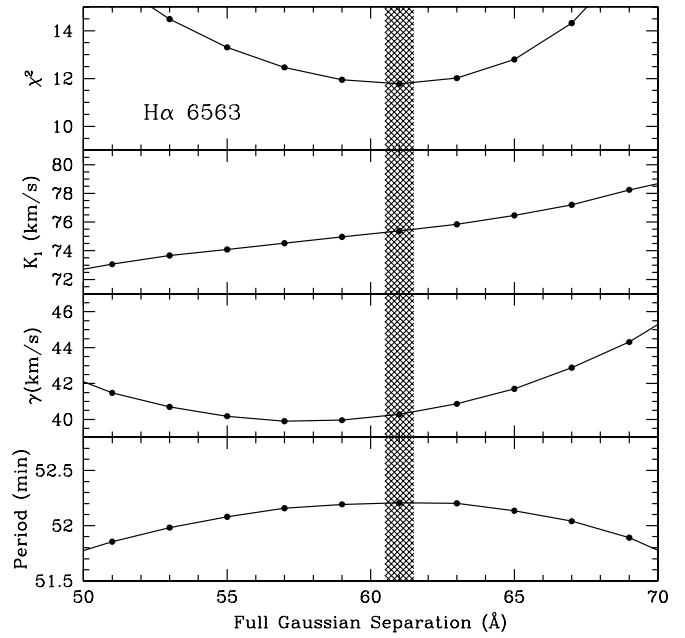


Figure 8. Shafter fit parameters as a function of the full separation between the Gaussian functions for the $H\alpha$ emission line. The top panel shows the χ^2 parameter and a shaded region indicates the minimum at 61 Å. The second panel from the top shows the velocity amplitude with the best fit at 75 km s^{-1} . The third panel from the top displays the systemic velocity, which has a value of 41 km s^{-1} at the minimum χ^2 parameter. The bottom panel shows the orbital period, which never exceeds 52.2 minutes.

3.2.2. Radial Velocities

To avoid influencing the measurement of radial velocity variations with changes in the line shapes, we estimated the line velocities using the method described by Shafter (1983). The Shafter method multiplies the red and blue wings of an emission line by a pair of Gaussian functions separated by a certain number of Angstroms. The wavelength of the Gaussians is shifted until the difference in flux measured by the two functions is zero. This wavelength is assumed to be the central wavelength of the emission line. This is repeated for all the spectra, at which point it is possible to construct a radial velocity curve. The best separation between the Gaussian functions is determined by fitting each set of radial velocity curves with a sinusoidal function and choosing the one that gives the lowest χ^2 parameter.

In our data, the minimum χ^2 occurred at a full Gaussian separation of 61 Å, and the χ^2 parameter rises sharply when the separation is increased. The minimum χ^2 was 12 for 16 spectra and four fit parameters (amplitude, K_1 ; systemic velocity, γ ; orbital period, P ; phase, ϕ). We find that $K_1 = 75 \pm 4 \text{ km s}^{-1}$, $\gamma = 41 \pm 3 \text{ km s}^{-1}$, and $P = 52.2 \pm 2.3$ minutes, a value within 1.4σ of the 55.36 minute photometric period. The resulting radial velocity curve is shown in Figure 7 where the phase has been set to match the photometric phase; Figure 8 shows the fit parameters as a function of Gaussian separation. The maximum brightness in the orbital modulation occurs at the maximum disk redshift.

At first, our estimate of $K_1 = 75 \pm 4 \text{ km s}^{-1}$ might seem to contradict the small mass ratio that we have inferred, as it is impossible to obtain so large a value for the WD’s radial velocity amplitude using $q = 0.06$. Nevertheless, K_1 in a CV can often be significantly different than the true orbital motion of the WD (e.g., U Geminorum: Long & Gilliland 1999). Since

an accretion disk’s emission is often asymmetric, techniques which rely upon a measurement of the wings of a spectral line will frequently produce inaccurate radial velocities for the WD (e.g., Appendix A.2 in Hellier 2001). For example, although CSS 100603 has a mass ratio of just $q = 0.017$, K_1 in that system is $69.4 \pm 2.9 \text{ km s}^{-1}$ for the $H\alpha$ line, a number which would be unreasonably high if it actually represented the WD’s motion.

4. DISCUSSION

4.1. Evolutionary Track of CSS 120422

Several attributes of CSS 120422 distinguish it from most other sub-period-minimum systems with detectable hydrogen. For example, EI Psc and V485 Cen both contain prominent secondary stars which are relatively easy to detect spectroscopically. The prevailing explanation for the secondary stars in these two systems is that they are evolved stars which have shed their outer envelopes. Both are abnormally luminous for such short orbital periods (Uemura et al. 2002). While EI Psc and V485 Cen both exhibit helium enrichment like CSS 120422, the non-detection of the donor in CSS 120422 out to 950 nm suggests that it is cool and dim, in agreement with the system’s very low mass ratio.

While the combination of an invisible donor and a sub-minimum period could be the signature of a brown-dwarf secondary, the greatly elevated levels of helium in CSS 120422 do not support this scenario. Brown dwarfs, by definition, lack the mass necessary to enter the main sequence, so they should not be particularly rich in helium. Thus, the helium enhancement in EI Psc and V485 Cen is inconsistent with the presence of brown-dwarf donors in those systems (Politano 2004); indeed, in the spectra of brown-dwarf CVs, the He I emission is quite subdued (e.g., Littlefair et al. 2007; Unda-Sanzana et al. 2008). Although the He I/ $H\alpha$ ratio is sensitive to both pressure and temperature, the intense He I lines in CSS 120422 disfavor the possibility that the secondary star is a brown dwarf.

Indeed, at first blush, CSS 120422 is almost identical to CSS 100603, the system reported by Breed et al. (2012). In both of these sub-period-minimum systems, the accretion disk shows high levels of both hydrogen and helium, and the late-type donor is spectroscopically undetectable. In their theoretical examination of AM CVn progenitors, Nelemans et al. (2010) identify the presence of hydrogen as conspicuous evidence favoring the evolved-CV channel over the double-WD and helium-star channels of AM CVn formation; if the secondary were either a WD or a helium star, hydrogen would likely be undetectable. Thus, both of these systems are excellent candidates for AM CVn progenitors evolving pursuant to the evolved-main-sequence-donor model.

In neither system is the donor fully degenerate yet. To reach this conclusion about CSS 100603, Breed et al. (2012) relied upon models of fully degenerate helium stars, and we took a similar approach with CSS 120422. Specifically, we used Equation (15) in Verbunt & Rappaport (1988; a mass–radius relation for a fully degenerate helium star) and set it equal to Equation (6) in Knigge (2006; a formula for the radius of a Roche-lobe-filling star given its mass and orbital period). Together, these formulae reveal that if the secondary were a degenerate helium star with an orbital period of 0.9227 hr, its mass would be $0.0083 M_{\odot}$ —which, given the mass ratio of 0.06, implies an unreasonably low WD mass of $0.14 M_{\odot}$.

Alternatively, if we adopt $0.83 M_{\odot}$ as the mass of the primary,⁹ the expected mass of the secondary would be $0.05 M_{\odot}$ according to the mass ratio. A helium star of this mass would have a radius of just $0.03 R_{\odot}$, making it considerably smaller than the radius of its Roche lobe ($0.08 R_{\odot}$). Based on these considerations, we conclude that the donor in CSS 120422 is semi-degenerate, and the system will continue to evolve toward the shorter orbital periods which characterize the majority of AM CVn stars. Nevertheless, it is unclear whether CSS 120422 will eventually evolve into a full-fledged AM CVn system, as some CVs with evolved donors will reach their minimum period and then evolve back toward longer periods before becoming sufficiently hydrogen-deficient to be properly classified as AM CVn systems (L. Yungelson 2013, private communication).

While it is likely that these two systems are the products of very similar evolutionary processes, CSS 120422 does have several features which differentiate it from its cousin. The two most obvious dissimilarities are that CSS 120422 is an additional ~ 10 minutes below the period minimum and has a mass ratio that is ~ 4 times greater than Breed’s CV. Moreover, CSS 120422 shows more extensive heavy-element enrichment, especially the Si II 634.7/637.1 nm doublet and the near-infrared Ca II triplet, both of which are weak or non-existent in CSS 100603. As Section 4.2 explains, we also find that CSS 120422’s disk is decidedly non-uniform—especially at the $H\alpha$ wavelength—and likely contains spiral structure. No comparable features have been reported in CSS 100603.

4.2. Non-uniform Disk Emission

The $H\alpha$ spectroscopy shows evidence of multiple emission regions on the disk. In the trailed $H\alpha$ spectra in Figure 9, the most prominent feature is the bright spot’s classic S-wave, which oscillates between the $H\alpha$ line’s two peaks over the course of the orbit. This S-wave vanishes as the bright spot moves from zero-velocity to maximum blueshift, only to reappear abruptly as the bright spot attains its maximum blueshift. During the bright spot’s invisibility, a blueshifted absorption-like feature appears, but we suspect that it is the mere absence of emission rather than true absorption.¹⁰ In addition, near the maximum redshift of the bright spot, an even stronger emission feature appears in the blue wing of the $H\alpha$ line. As the bright spot transitions from maximum redshift to zero radial velocity, the blueshifted emission feature also moves toward zero velocity, but its intensity plummets dramatically.

The appearance of the $H\beta$ and He I lines (also in Figure 9) is somewhat less remarkable. The S-wave from the bright spot remains apparent, but the second emission feature is very subtle compared to the $H\alpha$ trailed spectrum. As with the $H\alpha$ line, the bright spot vanishes in these wavelengths as it moves from zero radial velocity to maximum blueshift.

The velocity information contained within a trailed spectrum can be used to reconstruct an indirect image of the disk in velocity coordinates (as opposed to spatial coordinates). Known as Doppler tomography, this technique essentially generates an inside-out image of the disk (Marsh & Horne 1988). Using the Doppler tomography algorithm of Spruit (1998), we find that the competing S-waves in the $H\alpha$ trailed spectrum correspond

⁹ According to Zorotovic et al. (2011), this is the average mass of primary stars in CVs.

¹⁰ Because this feature disappears at zero velocity and does not extend into the redshifted portion of the line, it is unlikely to be a grazing eclipse. While Carter et al. (2013) reported a grazing eclipse, they believe that the eclipse occurs only during outburst, when the disk is at its maximum size.

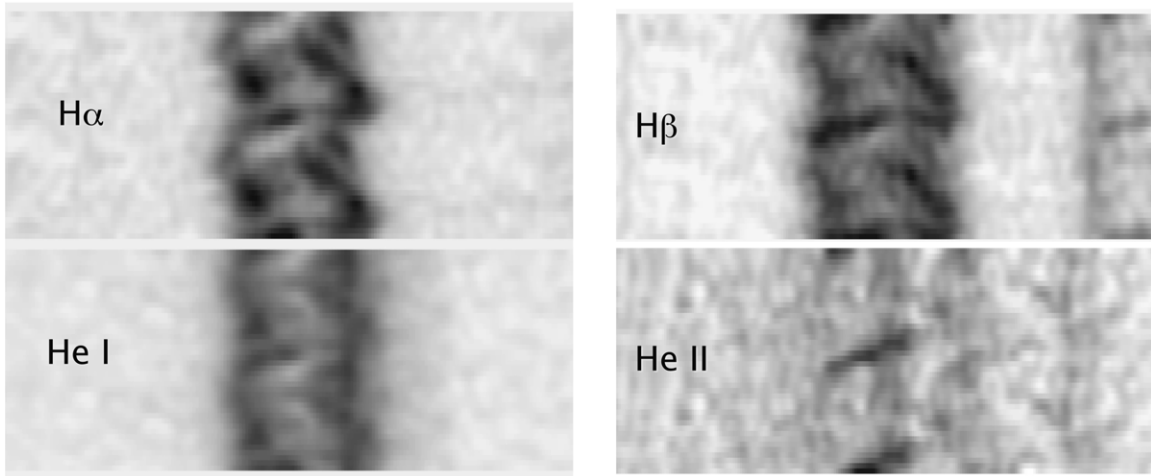


Figure 9. Triled spectra of $H\alpha$, He I 587.5 nm, $H\beta$, and He II 468.6 nm. All triled spectra show two orbits. To reduce contamination of the He II line, the He I 471.3 nm line has been partially subtracted using the profile of another uncontaminated line.

with two distinct emission regions located on opposite sides of the disk (Figure 10). The bright spot in the $-V_x, +V_y$ quadrant, which has a noticeably higher velocity than the other emission, is almost certainly attributable to the shock created by the stream-disk interaction, but the emission in the $+V_x, -V_y$ quadrant—which consists of both the intermediate- and low-velocity components—presents a more of a mystery, one which we address in the following two subsections.

4.2.1. Tidally Induced Spiral Shocks

In other CVs, there have been at least two major proposed explanations for non-uniform emission of this sort. One possibility is that the outer disk contains spiral arms produced by the tidal torque of the secondary. Spiral shocks facilitate angular momentum transfer in the disk, and in CVs with very low mass ratios, spirals can be permanent features in the disk because material in the outer disk attains a 2:1 orbital resonance with the donor (Lin & Papaloizou 1979). In CVs with relatively high mass ratios, tidal forces dissipate the outer disk before it can expand to the 2:1 resonance, but calculations by both Lin & Papaloizou (1979) and Osaki & Meyer (2002) found that when $q \lesssim 0.08$, the 2:1 resonance is inside the tidal truncation radius. Observationally, several CVs have shown strong evidence of spiral structure stemming from the 2:1 resonance (e.g., Aviles et al. 2010).

We favor the presence of spiral shocks as the source of the features observed in our Doppler tomogram. Given that $q = 0.06$, the 2:1 resonance in CSS 120422 rests within the tidal truncation radius, making it possible for permanent spiral structure to develop as described in Lin & Papaloizou (1979). We further note that the overall appearance of our tomogram is very similar to a simulated tomogram of a disk with spiral arms caused by disk material at this very resonance (Aviles et al. 2010). To test more quantitatively for the presence of disk material at the 2:1 resonance, we again adopted a WD mass of $0.83 M_\odot$ (see our footnote 9) and computed the Keplerian velocity of disk material with an orbital period of exactly half of the system’s orbital period. According to the formula

$$v = \sqrt[3]{\frac{2\pi GM_{wd}}{P}}$$

the corresponding resonance velocity for these parameters is 750 km s^{-1} , which we plot as a circle around the origin in the tomogram. Although there are obvious pitfalls with simply assuming the WD’s mass, the overlaid circle intersects much of the intense, non-uniform emission, furnishing circumstantial evidence that the disk in CSS 120422 did extend to the 2:1 resonance when we observed the system.

Just as importantly, Kunze & Speith (2005) calculated that spiral structure in such a system would produce a double-peaked light curve and presented a simulated phase plot which matches ours with uncanny accuracy. Kunze and Speith predict that both the minima and maxima will be unequal, with the deepest minimum coming at phase ~ 0.25 and a weaker one at phase ~ 0.75 ; the global maximum occurs at phase zero, and the weaker peak at phase ~ 0.55 .¹¹ Compared with the corresponding features in Kunze’s and Speith’s simulated light curve, the secondary maximum and minimum in our phase plot (Figure 5) are somewhat feeble in appearance. This relatively minor disparity might be because the simulations assume a higher inclination than the one actually observed in CSS 120422.

4.2.2. Accretion-stream Overflow

Alternatively, non-uniform disk emission might be the result of an accretion stream which overflows the disk after its initial collision, a mechanism which has received a great deal of attention in theoretical studies (e.g., Armitage & Livio 1996, 1998). The overflowing stream would cloak portions of the disk, producing absorption at certain photometric phases and spectroscopic velocities, as it accelerated toward the inner disk. The reimpact of the stream with the disk, in turn, would produce an inner hot spot which, according to Armitage & Livio (1998), would be much more apparent in a system with a low-luminosity accretion disk. The emission in the $+V_x, -V_y$ quadrant of our tomogram, therefore, might be such a feature.

A shortcoming of the stream-overflow hypothesis is that the inner bright spot should have a noticeably higher velocity than the outer bright spot because the WD’s strong gravity would significantly accelerate the overflowing stream. We observe the

¹¹ Whereas we set phase zero equal to the peak of the light curve, Kunze and Speith selected the time of minimum flux as phase zero in their data. For the sake of internal consistency with the rest of this paper, we apply our own phasing scheme when describing their simulated phase plot.

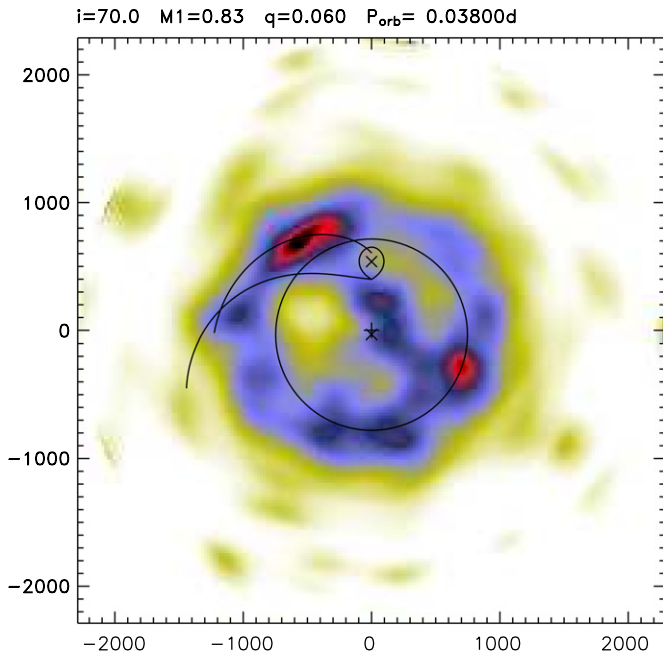


Figure 10. Doppler tomogram of the $H\alpha$ line. There are two distinct regions of emission, located on opposite sides of the disk. The tomogram plots the Roche lobe of the secondary assuming a mass ratio of $q = 0.06$, along with the accretion stream trajectory, the WD’s position (denoted with an X), the center of mass (denoted with a + sign), and the orbital velocity of disk material at the 2:1 resonance as explained in Section 4.2.1.

reverse; the second bright spot in the $+V_x, -V_y$ quadrant has a lower velocity than the stream–disk interaction. Thus, the lower-than-expected velocity weighs against the possibility of an overflowing accretion stream. Furthermore, an overflowing stream would probably produce absorption at most phases, something which we do not observe.

Though we cannot rule out the possibility of stream overflow, spiral shocks elegantly weave the spectroscopy, photometry, and mass ratio of CSS 120422 into a reasonably coherent theory of the system, one which is less speculative than the stream-overflow model.

5. CONCLUSION

We have reported photometry and spectroscopy of CSS 120422:111127+571239, a CV with an orbital period over 20 minutes below the period minimum. While the system is hydrogen-rich, its helium-to-hydrogen ratio is much higher than in typical SU UMa-type CVs, and the donor is completely invisible in our spectra. We identify spectroscopic and photometric periods of 52.2 minutes and 55.36 minutes, respectively. Using the 55 minute period and the previously reported superhump period (Kato et al. 2013), we estimate a mass ratio of $q = 0.06$. Furthermore, Doppler tomography reveals two distinct regions of intense $H\alpha$ emission on the disk, consistent with spiral shocks produced when material in the outer disk reaches a 2:1 resonance with the secondary. Drawing upon theoretical light curves of low mass-ratio CVs, we suspect that these spiral arms are responsible for the intermittently double-peaked orbital modulation in the photometry, which is reminiscent of the variation observed in WZ Sge stars.

The best explanation for the short orbital period and the elevated helium abundance is that CSS 120422 is a progenitor of an AM CVn system following the evolved-CV track, similar to the system reported by Breed et al. (2012). The discovery of

two systems of this type in such rapid succession lends credence to theoretical predictions (e.g., Nelemans et al. 2010) that the evolved-CV channel of evolution can contribute significantly to the galactic AM CVn population.¹²

This paper has benefited from the comments and suggestions of the two referees, to whom we are grateful.

We thank Taichi Kato for sharing with us a power spectrum of his photometry of CSS 120422 and helping us to rule out the 53 minute orbital period, as well as Lev Yungelson, who pointed out to us that not all CVs with evolved donors will become AM CVn systems.

R.P.K. received support from NSF grant AST-1211196.

K.M. and A.A. received funding for this research through the Research Experience for Undergraduates program offered by the Department of Physics at the University of Notre Dame.

The results presented here are partially based on observations made with the VATT: the Alice P. Lennon Telescope and the Thomas J. Bannan Astrophysics Facility. We thank Richard Boyle and the Vatican Observatory Research Group for providing time on the VATT for this project.

The MODS spectrographs were built with funding from the NSF grant AST-9987045 and the NSF Telescope System Instrumentation Program (TSIP), with additional funds from the Ohio Board of Regents and the Ohio State University Office of Research.

The LBT is an international collaboration among institutions in the United States, Italy, and Germany. LBT Corporation partners are The University of Arizona on behalf of the Arizona university system; Istituto Nazionale di Astrofisica, Italy; LBT Beteiligungsgesellschaft, Germany, representing the Max-Planck Society, the Astrophysical Institute Potsdam, and Heidelberg University; The Ohio State University; and The Research Corporation, on behalf of the University of Notre Dame, University of Minnesota, and University of Virginia.

Facilities: LBT, VATT, FLWO:1.5m

REFERENCES

- Armitage, P. J., & Livio, M. 1996, *ApJ*, 470, 1024
 Armitage, P. J., & Livio, M. 1998, *ApJ*, 493, 898
 Augusteijn, T., van der Hooft, F., de Jong, J. A., & van Paradijs, J. 1996, *A&A*, 311, 889
 Aviles, A., Zharikov, S., Tovmassian, G., et al. 2010, *ApJ*, 711, 389
 Breedt, E., Gänsicke, B. T., Marsh, T. R., et al. 2012, *MNRAS*, 425, 2548
 Carter, P. J., Steeghs, D., de Miguel, E., et al. 2013, *MNRAS*, in press (arXiv:1301.6761)
 Drake, A. J., Djorgovski, S. G., Mahabal, A., et al. 2009, *ApJ*, 696, 870
 Garnavich, P., Littlefield, C., Marion, G. H., et al. 2012, *ATel*, 4112, 1
 Groot, P. J., Nelemans, G., Steeghs, D., & Marsh, T. R. 2001, *ApJL*, 558, L123
 Hellier, C. 2001, *Cataclysmic Variable Stars: How and Why They Vary* (London: Springer-Praxis)
 Kato, T. 2012, VSNET-alert, 14475
 Kato, T., Hamsch, F.-J., Maehara, H., et al. 2013, *PASJ*, 65, 23
 Kato, T., Imada, A., Uemura, M., et al. 2009, *PASJ*, 61, 395
 Kato, T., Uemura, M., Ishioka, R., et al. 2004, *PASJ*, 56, 1
 Knigge, C. 1988, *MNRAS*, 373, 484
 Kolb, U., & Baraffe, I. 1999, *MNRAS*, 309, 1034
 Kunze, S., & Speith, R. 2005, in ASP Conf. Ser. 330, *The Astrophysics of Cataclysmic Variables and Related Objects*, ed. J. M. Hameury & J. P. Lasota (San Francisco, CA: ASP), 389
 Lin, D. N. C., & Papaloizou, J. 1979, *MNRAS*, 186, 799
 Littlefair, S. P., Dhillon, V. S., Marsh, T. R., et al. 2007, *MNRAS*, 381, 827
 Long, K. S., & Gilliland, R. L. 1999, *ApJ*, 511, 916

¹² Breed et al. (2012) briefly mention two other sub-period-minimum CVs which could be AM CVn progenitors with evolved donors, but at the time of writing, neither system has been studied in much detail.

- Marsh, T. R., & Horne, K. 1988, *MNRAS*, **235**, 269
- Marsh, T. R., Horne, K., & Rosen, S. 1991, *ApJ*, **366**, 535
- Nagel, T., Rauch, T., & Werner, K. 2009, *A&A*, **499**, 773
- Nelemans, G., Yungelson, L. R., van der Sluys, M. V., & Tout, C. A. 2010, *MNRAS*, **401**, 1347
- Osaki, Y., & Meyer, F. 2002, *A&A*, **383**, 574
- Patterson, J. 1998, *PASP*, **110**, 1132
- Patterson, J., Thorstensen, J., & Knigge, C. 2008, *PASP*, **120**, 510
- Podsiadlowski, P., Han, Z., & Rappaport, S. 2003, *MNRAS*, **340**, 1214
- Pogge, R. W., Atwood, B., Brewer, D. F., et al. 2010, *Proc. SPIE*, **7735**, 77350A
- Politano, M. 2004, *ApJ*, **604**, 817
- Rodríguez-Gil, P., Gänsicke, B. T., Hagen, H.-J., et al. 2005, *A&A*, **431**, 269
- Shafter, A. W. 1983, *ApJ*, **267**, 222
- Sienkiewicz, R. 1984, *AcA*, **34**, 325
- Spruit, H. C. 1998, arXiv:astro-ph/9806141v1
- Stellingwerf, R. F. 1978, *ApJ*, **224**, 953
- Thorstensen, J. R., Fenton, W. H., Patterson, J. O., et al. 2002, *ApJ*, **567**, 49
- Tutukov, A. V., Fëdorova, A. V., Ergma, E. V., & Yungelson, L. R. 1985, *SvAL*, **11**, 52
- Uemura, M., Kato, T., Ishioka, R., et al. 2002, *PASJ*, **54**, 599
- Unda-Sanzana, E., Marsh, T. R., Gänsicke, B. T., et al. 2008, *MNRAS*, **388**, 889
- Verbunt, F., & Rappaport, S. 1988, *ApJ*, **332**, 193
- Williams, R. E., & Ferguson, D. H. 1982, *ApJ*, **257**, 672
- Zorotovic, M., Schreiber, M. R., & Gänsicke, B. T. 2011, *A&A*, **536**, 42