

Catalogue of American Amphibians and Reptiles.

Wilson, Larry David. 1990. *Tantilla lempira*.

***Tantilla lempira* Wilson and Mena**

Tantilla lempira Wilson and Mena, 1980:25. Type-locality, "41 km NW Tegucigalpa, Depto. Francisco Morazán, Honduras." Holotype, Louisiana State University Mus. Natural History 26093, adult female, collected 3 June 1968 by Ernest A. Liner (examined by author).

• **Content.** No subspecies are recognized.

• **Definition.** A species of *Tantilla* with a narrow, sometimes disjunct, dark middorsal stripe confined to the middorsal scale row and a barely discernible pale lateral stripe on adjacent halves of dorsal scale rows 3 and 4, outlined below by a dark border. The dorsal ground color is pale brownish gray. The venter is immaculate cream. The head pattern consists of a brown head cap followed by a dark nape band, punctuated by small, indistinct pale nuchal spots largely confined to the scales posterior to the parietals. The dark nape band is followed by a shorter pale neck band. There is no dark lateral extension of the head cap between the postocular pale spot and the pale pigment on the lateral gulars. Ventrals and subcaudals range from 138 to 154 and 36 to 52, respectively.

• **Diagnosis.** *Tantilla lempira* may be distinguished from all congeners by possession of a narrow, disjunct dark middorsal stripe confined to the middorsal row, a barely discernible pale lateral stripe on adjacent halves of rows 3 and 4 outlined below by dark pigment, a pale brownish gray dorsal ground color, a head pattern consisting of dark head cap and nape band punctuated by small, indistinct pale nuchal spots largely confined to scales posterior to the parietals, a middorsally-divided pale neck band, 138 to 154 ventrals, and 36 to 52 subcaudals.

• **Descriptions.** The original description is in Wilson and Mena (1980). Additional descriptions (some of new material) are in Wilson (1982, 1984) and Wilson and Meyer (1982, 1985).

• **Illustrations.** Wilson and Mena (1980) provided pen-and-ink drawings of lateral, dorsal, and ventral views of the head and

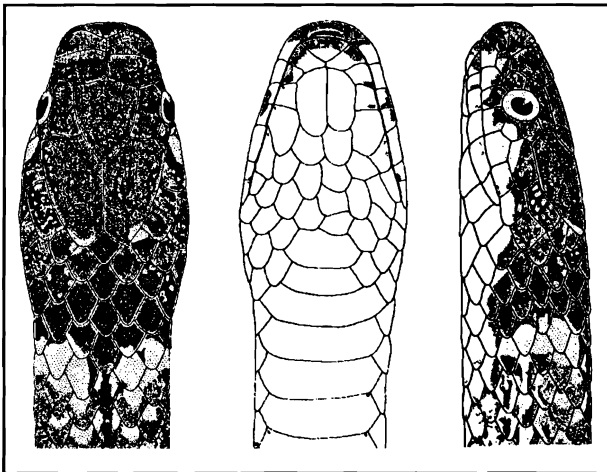
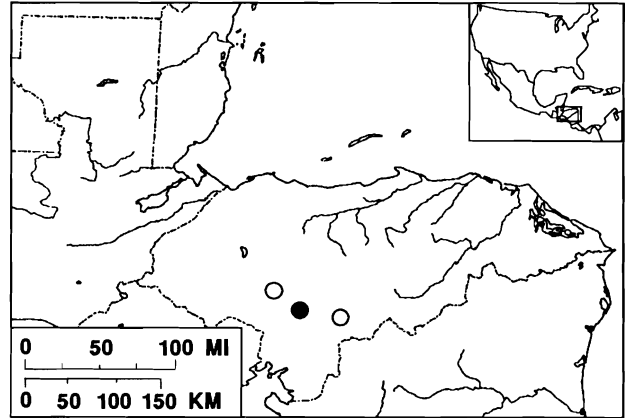


Figure. Head of *Tantilla lempira* (from Wilson and Mena, 1980).



Map. Solid circle indicates the type-locality, hollow circles other localities.

anterior body, as well as the dorsal color pattern.

• **Distribution.** *Tantilla lempira* inhabits moderate to intermediate elevations (1450 to 1730 m) of the Pacific versant of south-central Honduras.

• **Fossil Record.** None.

• **Pertinent Literature.** The most complete source of information on this species is the original description by Wilson and Mena (1980). Summary descriptions are in Wilson (1982) and Wilson and Meyer (1982, 1985). Additional material beyond the hypodigm was reported by Wilson (1982, 1984).

• **Etymology.** The name *lempira* is used as a noun in apposition and "is that of an Indian chief who fought against the Spanish invasion of Honduras. It is also the name of a department in Honduras and of the Honduran monetary unit" (Wilson and Mena, 1980).

Literature Cited

- Wilson, Larry David. 1982. A review of the colubrid snakes of the genus *Tantilla* of Central America. *Milwaukee Publ. Mus. Contrib. Biol. Geol.* (52):1-77.
- . 1984. Additional notes on colubrid snakes of the genus *Tantilla* from tropical America. *Herptol. Rev.* 15(1):8-10.
- , and César E. Mena. 1980. Systematics of the *melanocephala* group of the colubrid snake genus *Tantilla*. *Mem. San Diego Soc. Natur. Hist.* (11):1-58.
- , and John R. Meyer. 1982. The snakes of Honduras. *Milwaukee Publ. Mus. Biol. Geol.* (6):1-159.
- , and John R. Meyer. 1985. The snakes of Honduras, 2nd. Ed. *Milwaukee Publ. Mus. Biol. Geol.* 150 p.

Larry David Wilson, Department of Biology, Miami-Dade Community College, Miami, Florida 33176.

Primary editor for this account, Jaime D. Villa.

Published 31 January 1990 and Copyright © 1990 by the Society for the Study of Amphibians and Reptiles.