

REPTILIA: SQUAMATA: PHRYNOSOMATIDAE

SCELOPORUS HETEROLEPIS

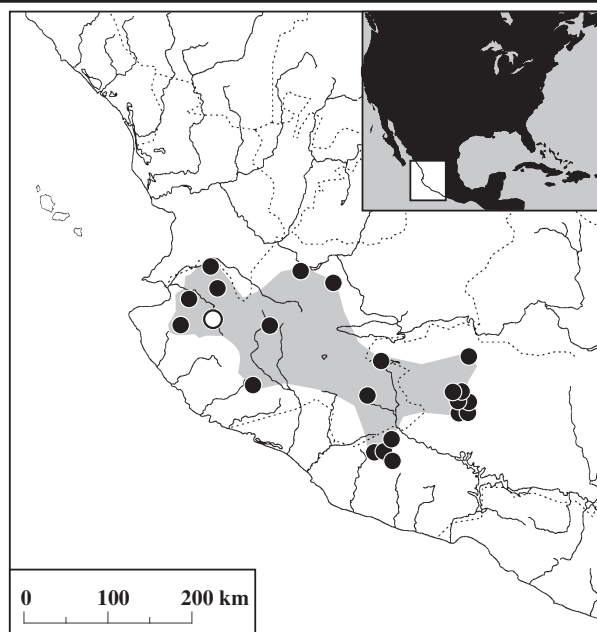
Catalogue of American Amphibians and Reptiles.

Smith, H.M., P. Ponce-Campos, E.A. Liner, and D. Chiszar.
2004. *Sceloporus heterolepis*.

Sceloporus heterolepis Boulenger

Sceloporus heterolepis Boulenger 1894:731. Type locality, "various localities in the State of Jalisco (La Cumbre de Los Arrastrados, Real Alto, Riocho [= Rancho] La Berbería [in the] Sierra de Bolaños) at altitudes varying between 7800 and 8500 feet." Syntypes, Museum of Comparative Zoology, Harvard University (MCZ) 32346, California Academy of Sciences (CAS) 3712-3 (lost), British Museum (Natural History) (BMNH) 92.2.8.30, 1946.8.10.20, 1946.8.25-30, 1946.8.10.37-43, collected by Dr. A.C. Buller. Inasmuch as the syntype from Rancho La Berbería represents a different species (*S. shannonorum* Langebartel) from the one to which the name has previously been applied, we here designate BMNH 92.2.8.30 from La Cumbre de los Arrastrados as lectotype. It most closely conforms with Boulenger's (1894) illustration *vide* Colin McCarthy, BMNH. MCZ 32346 is a topotypic syntype.

Sceloporus heterolepis: Larsen and Tanner 1974: 6. *Lapsus*.
Sceloporus heterolepis heterolepis: Webb 1969:305.



MAP. Distribution of *Sceloporus heterolepis*: the circle indicates the type locality; dots indicate other sites of collection.

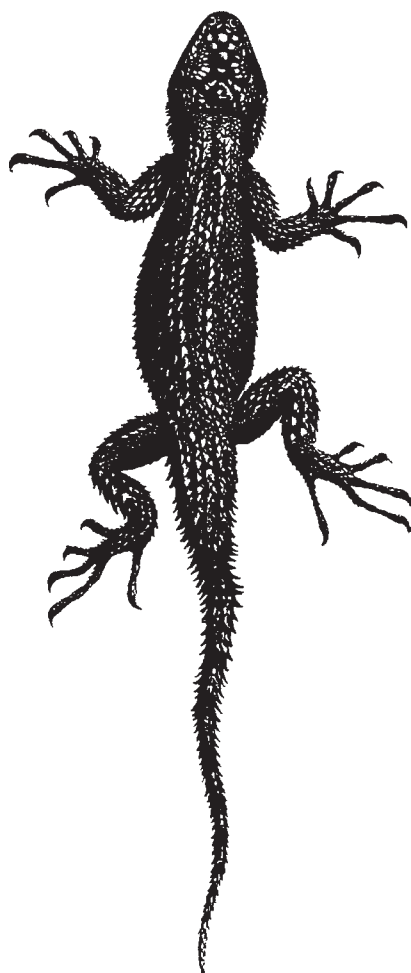


FIGURE 1. The presumed lectotype of *S. heterolepis* (from Boulenger 1894), showing dorsal sculation.



FIGURE 2. Venter of an adult female *S. heterolepis* from Volcán de Tequila, Jalisco, 2876 m (20°47'42.0"N, 102°50'37.0"W), 8 September 2001 (photograph by PPC). Note the complete absence of both gular and abdominal semeions, sharply different from sympatric *S. grammicus*, which has at least abdominal semeions.



FIGURE 3. A juvenile female *S. heterolepis*, 31.8 mm SVL, same locality as in Figure 1, 21 July 2001 (photograph by PPC).

• **CONTENT.** No subspecies are recognized.

• **DEFINITION.** *Sceloporus heterolepis* is a medium-sized species, maximum SVL 70 mm in males, 63 mm in females. Dorsal and lateral scales are irregular in size, small ones scattered among larger scales, or enlarged scales among smaller ones. A paravertebral row of 31–38 enlarged scales form a continuous row on each side from the neck to the rear margins of the thighs; these are narrowly separated from each other by an irregular series of 56–80 small vertebral scales. Large dorsolateral nuchal scales are sharply differentiated from small lateral nuchal scales, forming a prominent lateral nuchal fringe and tuft. A group of tiny scales separates the two rows of paravertebral scales on the neck, and another group separates the paravertebral scales from the nuchal fringe on each side. Femoral pores number 13–21 (\bar{x} = 16, N = 36).

Dorsal and lateral surfaces are dark gray, with 4–5 transverse dark lines that are light-bordered and usually much expanded lengthwise at middorsum. The first is anterior to the arm and in males crosses the throat. Males have bluish, medially dark-bordered abdominal semeions, each with a relatively short dark border tapering at each end; these are in contact medially or narrowly separated. The gular region is light yellowish in males, with some dark speckling. Females are unmarked ventrally.

• **DIAGNOSIS.** This species is unique in its genus in having a continuous paravertebral row of 31–38 enlarged scales on each side, narrowly separated by an irregular vertebral series of 56–80 small scales. Also unique is the presence of three rows of very small scales on the nape separating the paravertebral rows of larger scales from each other and from the lateral nuchal fringes. These features also separate this species from its closest relative, *S. shannonorum*. The latter species usually has two superimposed preoculars, whereas *S. heterolepis* usually has one. All scales are imbricate. Sympatric *S. grammicus* females differ in having rather well-developed abdominal semeions.

• **DESCRIPTIONS.** Descriptions are in Boulenger (1894), Smith (1939), Grant and Smith (1960), Duellman (1961), Webb (1969) and Köhler and Heimes (2002).

• **ILLUSTRATIONS.** A black and white drawing of the lectotype is in Boulenger (1894), reproduced herein.

• **DISTRIBUTION.** This species occurs in oak-pine-fir forests from central and eastern Jalisco to western Michoacán, at elevations of 1250–3000 m, south of the Río Santiago Valley in the western end of the Neovolcanic Axis and the northern end of the Sierra Madre del Sur. *Sceloporus shannonorum* replaces it in the Sierra Madre Occidental.

• **FOSSIL RECORD.** None.

• **PERTINENT LITERATURE.** Citations in the literature in contexts other than previously indicated include the following: **checklists** (Flores-Villela 1993; Liner 1994; Smith and Taylor 1950b, 1966), **common names** (Sokolov 1988, Liner 1994), **comparisons of *S. h. heterolepis* and *S. h. shannonorum*** (Langebartel 1959, Duellman 1961, Webb 1969), **distribution** (Cope 1896; Flores-Villela and Gérez 1988, 1994; McCranie and Wilson 1987, 1990; Nieto-Montes de Oca 1987; Wilson and McCranie 1979), **ecology** (Duellman 1965), **epidermatoglyphics** (Burstein et al. 1974), **habitat** (Duellman 1961, 1965; Flores-Villela 1993; Webb 1969), **karyology** (Gilboa 1974, Hall 1980, Sites et al. 1992), **key** (Köhler and Heimes 2002, Smith and Taylor 1950b), **literature** (Smith and Smith 1976, 1993), **localities** (Campbell and Murphy 1977; Chrapliwy 1956; Gadow

1905, 1930; Grant and Smith 1960; Langebartel 1959; Smith and Taylor 1950b; Webb 1982, 1984), **mention only** (Wills 1977), **phylogeny** (Flores-Villela et al. 2000; Hall 1980; Larsen and Tanner 1974, 1975; Sites et al. 1992; Wiens and Reeder 1997), **semeions** (Wiens 1999), **skull** (Larsen and Tanner 1974), **speciation** (Hall 1980), **types** (Barbour and Loveridge 1946, Smith et al. 1964), **type locality** (Smith and Taylor 1950a), and **viviparity** (Guillette et al. 1980, Méndez-de la Cruz et al. 1998).

• **REMARKS.** This species belongs to the *S. grammicus* group (Webb 1969, Wiens and Reeder 1997) and, like others of that group, is arboreal.

Webb (1969) described what he regarded as intergrades between *S. shannonorum* and *S. heterolepis* in a sample of three lizards from the western edge of the range of the latter (Sierra de Cuale, Jalisco; see **Comment**) and of one from Sierra de Autlán, 15 mi SE Autlán, Jalisco. They are not, however, from an area between the ranges of the two species as presently understood. No evidence suggests that the two taxa intergrade; they are dichopatric so far as is known at present.

• **ETYMOLOGY.** The name *heterolepis* (Latin, irregular scales) reflects the varied sizes of the dorsal and lateral scales in this species.

• **COMMENT.** We have examined the series from the Sierra de Cuale, and regard their morphology as within the range of variation of *S. heterolepis*. The dorsal scales are flattened, but their arrangement is more or less typical. Most importantly, the dorsal nuchal scales are of different sizes, with small scales between the paravertebral series, and also between the latter and the lateral nuchal fringes. These specimens are from an altitude (1250 m) considerably lower than others recorded for the species.

• **ACKNOWLEDGMENTS.** We are much indebted to the authorities of these institutions for information on their holdings of this species (acronyms follow Leviton et al. 1985, except for MZFC, Museo de Zoología, Facultad de Ciencias, UNAM): CAS, KU, MZFC, TCWC, UCM, UMMZ, USNM, UTA, and UTEP. We especially thank Dr. Colin McCarthy, who kindly provided critical information on the syntypes of *S. heterolepis*, which includes one (BMNH 92.2.8.30) from Rancho La Berbería, Sierra de Bolaños, representing *S. shannonorum*. Whitney C. Johnson and Dr. Sharon K. Collinge, EE Biology, University of Colorado, prepared the map.

LITERATURE CITED

- Barbour, T. and A. Loveridge. 1946. First supplement to typical reptiles and amphibians. Bull. Mus. Comp. Zool. 96:59–214.
- Boulenger, G.A. 1894. Second report on additions to the lizard collection in the Natural-History Museum. Proc. Zool. Soc. London 1894:722–736, pls. 57–59.
- Burstein, N., K.R. Larsen, and H.M. Smith. 1974. A preliminary survey of dermatoglyphic variation in the lizard genus *Sceloporus*. J. Herpetol. 8:359–369.
- Campbell, J.A. and J.B. Murphy. 1977. A new species of *Geophis* (Reptilia, Serpentes, Colubridae) from the Sierra de Coalcomán, Michoacán, México. J. Herpetol. 11:397–403.
- Chrapliwy, P.S. 1956. Extension of known range of certain amphibians and reptiles of Mexico. Herpetologica 12:121–124.
- Cope, E.D. 1896. The geographical distribution of Batrachia and Reptilia in North America. Amer. Nat. 30:886–902, 1003–1026.
- Duellman, W.E. 1961. The amphibians and reptiles of Michoacán, México. Univ. Kansas Publ. Mus. Nat. Hist. 15:1–148.
- . 1965. A biogeographic account of the herpetofauna of Michoacán, México. Univ. Kansas Publ. Mus. Nat. Hist. 15:627–709.
- Flores-Villela, O. 1993. Herpetofauna Mexicana. Annotated list of the

- species of amphibians and reptiles of Mexico, recent taxonomic changes, and new species. *Spec. Publ. Carnegie Mus. Nat. Hist.* (17):iv + 73 p.
- and P. Gérez. 1988. *Conservación en México: Síntesis sobre Vertebrados Terrestres, Vegetación y el Uso del Suelo*. Instituto Nacional de Investigaciones sobre Recursos Bióticos, Xalapa, México.
- and —. 1994. *Biodiversidad y conservación en México: vertebrados, vegetación y uso del suelo*. 2nd ed. Comisión Nacional para el Conocimiento y Uso de la Biodiversidad, and UNAM, México, D.F.
- , K.M. Kjer, M. Benabib, and J.W. Sites, Jr. 2000. Multiple data sets, congruence, and hypothesis testing for the phylogeny of basal groups of the lizard genus *Sceloporus* (Squamata, Phrynosomatidae). *Syst. Biol.* 49:713–739.
- Gadow, H. 1905. The distribution of Mexican amphibians and reptiles. *Proc. Zool. Soc. London* 1905:191–244.
- . 1930. *The history of the volcano of Jorullo and the reclamation of the devastated district by animals and plants*. Cambridge Univ. Press, Cambridge.
- Gilboa, I. 1974. Karyotypes of amphibians and reptiles: a biogeographic review, p. 91–156. *In* H.G. Dowling (ed.), 1974 *Yearbook of Herpetology*. New York, Herpetol. Info. Search Systems, Amer. Mus. Nat. Hist., New York.
- Grant, C. and H.M. Smith. 1960. Herpetozoa from Jalisco, Mexico. *Herpetologica* 16:39–43.
- Guillette, L.J., Jr., R.E. Jones, K.T. Fitzgerald, and H.M. Smith. 1980. Evolution of viviparity in the lizard genus *Sceloporus*. *Herpetologica* 36:201–215.
- Hall, W.P. 1980. Chromosomes, speciation and evolution of Mexican iguanid lizards. *Nat. Geogr. Soc. Res. Rep.* (12):309–329.
- Köhler, G. and P. Heimes. 2002. *Stachelleguane: Lebensweise, Pflege, Zucht*. Herpeton, Offenbach, Germany.
- Langebartel, D.A. 1959. A new lizard (*Sceloporus*) from the Sierra Madre Occidental of Mexico. *Herpetologica* 15:25–27.
- Larsen, K.R. and W.W. Tanner. 1974. Numeric analysis of the lizard genus *Sceloporus* with special reference to cranial osteology. *Great Basin Nat.* 34:1–41.
- and —. 1975. Evolution of the sceloporine lizards (Iguanidae). *Great Basin Nat.* 35:1–20.
- Leviton, A.E., R.H. Gibbs, Jr., E. Heal, and C.E. Dawson. 1985. Standards in herpetology and ichthyology: Part I. Standard symbolic codes for institutional resource collections in herpetology and ichthyology. *Copeia* 1985:802–821.
- Liner, E.A. 1994. Scientific and common names for the amphibians and reptiles of Mexico in English and Spanish. *Nombres científicos y comunes en Inglés y Español de los anfibios y los reptiles de México*. SSAR Herpetol. Circ. (23):v + 113 p.
- McCranie, J.R. and L.D. Wilson. 1987. The biogeography of the herpetofauna of the pine-oak woodlands of the Sierra Madre Occidental of Mexico. *Milwaukee Pub. Mus. Contrib. Biol. Geol.* (72):1–30.
- and —. 1990. Annotated bibliography to the herpetofauna of the pine-oak woodlands of the Sierra Madre Occidental, Mexico. *Smithson. Herpetol. Info. Serv.* (84):1–16.
- Méndez-de la Cruz, F.R., M. Villagrán-Santa Cruz, and R.M. Andrews. 1998. Evolution of viviparity in the lizard genus *Sceloporus*. *Herpetologica* 54:521–532.
- Nieto-Montes de Oca, A. 1987. Variación morfológica en *Sceloporus grammicus* (Lacertilia, Iguanidae) entre poblaciones de las partes central y noroccidental de su área de distribución. *Biol. Diss., Esc. Nac. Est. Prof. Zaragoza, México, D.F.*
- Sites, J.W., Jr., J.W. Archie, C.J. Cole, and O. Flores Vilella. 1992. A review of phylogenetic hypotheses for the lizards of the genus *Sceloporus* (Phrynosomatidae): implications for ecological and evolutionary studies. *Bull. Amer. Mus. Nat. Hist.* (213):1–110.
- Smith, H.M. 1939. The Mexican and Central American lizards of the genus *Sceloporus*. *Field Mus. Nat. Hist. Zool. Ser.* 26:1–397.
- , D.A. Langebartel, and K.L. Williams. 1964. Herpetological type-specimens in the University of Illinois Museum of Natural History. *Illinois Biol. Monogr.* (32):1–80.
- and R.B. Smith. 1976. *Synopsis of the Herpetofauna of Mexico*. Vol. III. Source Analysis and Index for Mexican Reptiles. John Johnson, North Bennington, Vermont.
- and —. 1993. *Synopsis of the Herpetofauna of Mexico*. Vol. VII. Bibliographic Addendum IV and Index, Bibliographic Addenda II–IV, 1979–1991. Univ. Press Colorado, Niwot.
- and E.H. Taylor. 1950a. Type localities of Mexican reptiles and amphibians. *Univ. Kansas Sci. Bull.* 33:313–380.
- and —. 1950b. An annotated checklist and key to the reptiles of Mexico exclusive of the snakes. *Bull. U.S. Natl. Mus.* (199):v + 253 p.
- and —. 1966. *Herpetology of Mexico*. Annotated checklists and keys to the amphibians and reptiles. A reprint of Bulletins 187, 194 and 199 of the U.S. National Museum, with a list of subsequent taxonomic innovations. Eric Lundberg, Ashton, Maryland.
- Sokolov, V.E. (ed.). 1988. *Dictionary of Animal Names in Five Languages. Amphibians and Reptiles*. Russky Yazyk, Moscow.
- Webb, R.G. 1969. Variation, status, and relationship of the iguanid lizard *Sceloporus shannonorum*. *Herpetologica* 25:300–307.
- . 1982. Distributional records for Mexican reptiles. *Herpetol. Rev.* 13:132.
- . 1984. Herpetogeography in the Mazatlán-Durango region of the Sierra Madre Occidental, Mexico. *Spec. Publ. Univ. Kansas Mus. Nat. Hist.* 10:217–241.
- Wiens, J.J. 1999. Phylogenetic evidence for multiple losses of a sexually selected character in phrynosomatid lizards. *Proc. R. Soc. Lond. B* 266:1529–1535.
- and T.W. Reeder. 1997. Phylogeny of the spiny lizards (*Sceloporus*) based on molecular and morphological evidence. *Herpetol. Monogr.* (11):1–101.
- Wills, F.M. 1977. *Systematics of Sceloporus parvus*. Unpubl. M.S. Thesis, Texas A&M Univ., College Station.
- Wilson, L.D. and J.R. McCranie. 1979. Notes on the herpetofauna of two mountain ranges in Mexico (Sierra Fría, Aguascalientes, and Sierra Morones, Zacatecas). *J. Herpetol.* 13:271–278.

HOBART M. SMITH, Department of EEBiology, University of Colorado, Boulder, CO 80309-0334 USA (hsmith@colorado.edu); **PAULINO PONCE-CAMPOS**, Bosque Tropical A. C., A. P. 5-515, Guadalajara, Jalisco, México, 45042 (poncecp@hotmail.com); **ERNEST A. LINER**, 310 Malibou Boulevard, Houma, LA 70364-2598 (eliner@mobiletel.com); and **DAVID CHISZAR**, Department of Psychology, University of Colorado, Boulder, Colorado 80309-0345 (chiszar@clipr.colorado.edu).

Primary editor for this account, Andrew H. Price.

Published 30 October 2004 and Copyright © 2004 by the Society for the Study of Amphibians and Reptiles.
