

INSIDE

SPORTS

The Longhorns get humiliated at Kansas State, losing by 26 points. They hadn't lost by as big of a margin since 2005. **PAGE 6**

Blaire Luna understands the 2013 softball season represents her last chance to win a title. **PAGE 6**

Fully healthy, sophomore pitcher Parker French is ready to assume the role as Friday starter. Can he live up to the standard his predecessors have set? **PAGE 6**

LIFE&ARTS

Science Scene questions the assertion that certain milk can kickstart puberty. **PAGE 10**

New poetry shop Write Bloody covers range of topics, from relationships to education to social issues. **PAGE 10**

Austin band Shivery Shakes is opening for growl at Hotel Vegas this Saturday. **PAGE 10**

VIEWPOINT

Stand on the Drag during rush hour traffic, watch the drivers playing with their phones parade before you and be persuaded Perry's past opposition to bills banning texting and driving is illogical. **PAGE 4**

TODAY

Deconstructing Django roundtable Discuss the implications of Quentin Tarantino's "Django Unchained" with Black Studies faculty from 5-7 p.m. in CLA 0.128

Natural Science Spring Career Fair Connect with more than 100 employers from 1-6 p.m. in the Frank Erwin Center. Free to all UT Austin students and alumni.

Tech industry legislation webinar Learn about the most relevant 2013 state and federal legislation that may likely affect startup and emerging growth businesses from 11:30 a.m. to 1 p.m. Register at: www.hulseyi.plaw.com/state-and-federal-immigration-webinar/.

TODAY IN HISTORY

In 1865 the United States Congress passes the Thirteenth Amendment which abolishes slavery.

UNIVERSITY

Dell family donates \$50 million to medical school

By **Christine Ayala**

UT will name its new medical school in honor of the Michael & Susan Dell Foundation, after a \$50 million donation that was announced Wednesday.

The donation will be distributed over 10 years to the new Dell School of Medicine, which is scheduled to begin enrolling students by the fall of 2016.

The Dell family foundation will also commit \$10 million toward community

grants to improve the quality and access of health clinics in Austin.

"The effects of a medical school will be felt well beyond the UT campus," Michael Dell said. "It will bring more medical expertise, specialists and researchers to the area. It will benefit for synergies between nursing, mental health, pharmacy and applied health education, and attract both private and public research funding. Ultimately, it will elevate the level of health care for the entire community."

In November, Travis County

voters approved to increase property taxes, from 7.89 cents to 12.9 cents per \$100 of property value, collected by Central Health Travis County's hospital district to help fund the medical school.

The Dell family foundation, founded in 1999, has contributed more than \$90 million to the University in funding and various health care initiatives, including the Dell Children's Medical Center, the Dell Pediatric Research Institute, the Michael & Susan



Chelsea Purgahn | Daily Texan Staff

Susan Dell announces the Michael & Susan Dell Foundation will be donating \$50 million to The Dell School of Medicine at the foundation's headquarters Wednesday evening.

DELL continues on page 2

TEXAN IN-DEPTH

Work-study vs. jobs



Marisa Vasquez | Daily Texan Staff

Frances Bello works off campus at Burnet Self Storage



Chelsea Purgahn | Daily Texan Staff

Elizabeth Melville works on campus at the UT Fine Arts Library



Pearce Murphy | Daily Texan Staff

Holly Chapman works on campus at the College of Pharmacy

Students compare benefits of work-study and off-campus jobs

By **Megan Strickland**

The start of the semester signals job-hunting season on the 40 Acres, and depending on what type

of job students are looking for, the search may be more or less difficult than in previous years.

Since 2009, the number of students with work-study jobs has decreased by

almost a quarter to almost 1,100 workers, but at the same time, the number of students employed on campus has increased by 822 workers to almost 11,000.

A shrinking federal subsidy is fueling the decline in work-study employment, said Tom Melecki, director of the Office of

Student Financial Services. Since fall 2009, federal funding for work-study has decreased by 21 percent at UT, from \$2.4 million to \$1.8 million. Additionally, state funding has decreased 18 percent from \$232,199 to \$190,187 in

WORK continues on page 5

VALVE continues on page 2

UNIVERSITY

Athletics Director shines light on historical Title IX

By **Amanda O'Donnell**

Chris Plonsky, UT women's athletics director since 2001, presented a talk Wednesday evening called "Title IX and the Future of Women's Athletics," which focused on the history of Title IX, a law equalizing opportunities in education, and its relationship to UT.

Title IX, a segment of the Education Amendments of 1972, forbids exclusion on the basis of gender from any education program or

activity receiving federal financial assistance. The law has since allowed many female student-athletes an opportunity to compete and receive scholarships for athletic excellence. Plonsky said UT is the only university that has not had to drop a men's sport in order to finance a growing women's athletic program.

During her talk Plonsky said Title IX initially had little association with sports.

"It was originally intended

TITLE IX continues on page 2



Texas women's athletic director Chris Plonsky speaks about Title IX in the UTC Wednesday evening.

Elisabeth Dillon Daily Texan Staff

CONTACT US

Main Telephone: (512) 471-4591
Editor: Susannah Jacob (512) 232-2212
Managing Editor: Trey Scott (512) 232-2217

News Office: (512) 232-2207
Multimedia Office: (512) 471-7835
Sports Office: (512) 232-2210

Life & Arts Office: (512) 232-2209
Retail Advertising: (512) 471-1865

Classified Advertising: (512) 471-5244

The Texan strives to present all information fairly, accurately and completely.

Copyright 2012 Texas Student Media. All articles, photographs and graphics, both in the print and online editions, are the property of Texas Student Media and may not be reproduced or republished in part or in whole without written permission.

TOMORROW'S WEATHER
High 71 Low 52
frosted animal cracker time!

FRAMES | FEATURED PHOTO



Liana Ramirez practices choreography for a dance piece at Central Christian Church on Wednesday afternoon.

Jonathan Garza | Daily Texan Staff

DELL continues from page 1

Dell Center for Healthy Living and the Texas Center for the Prevention and Treatment of Childhood Obesity.

Dr. Aliya Hussaini, the foundation's health team leader, said the donation will be used for education, through recruiting faculty and investing in technology and equipment.

"We've had some really great opportunities to partner with UT because they do some much for the community," Hussaini said. "We know medical students tend to stay where they go to school and even more where they train. It would be great if the best and brightest medical students were here in Austin taking care of our families and our community."

President William Powers Jr. said the previous donations from the Dell family foundation helped make

the medical school possible, building the University's health care credibility.

"It will be better for health care in Texas, it will allow people to have more specialties," Powers said. "It will help attract faculty and students who might want to work in a health sciences area that might go somewhere else, if there wasn't a medical school."

Steven Leslie, executive vice president and provost, said the medical school's steering committee is structuring the school, including its curriculum and training programs, and plans to have its inaugural dean by the fall. The steering committee is co-chaired by Dr. Robert Messing, the University's newly appointed vice provost for biomedical sciences, and Dr. Susan Cox, regional dean for Austin programs at UT-Southwestern.

VALVE continues from page 1

so in Korea you actually have to create the equivalent of a W-4 form for their characters to account for the income they gain."

Newell said Valve's emphasis on user-produced content creates an incentive to tailor products to individual interests, which could eventually lead to advances in tablets and phones designed for individuals.

"I can't imagine it, we are just so used to all our cars looking the same, all our phones looking the same," Scott Delgado, an Austinite in attendance, said. "If we can get there it would be amazing. We can make our products as unique as individuals are."

Valve games allow users to create and trade virtual products between players. But like a real economy, this virtual market is susceptible to boom-and-bust cycles.

Valve hired Greek

economist Yanis Varoufakis, who currently teaches in the LBJ School of Public Affairs, to understand this virtual economy and its implications for the future of corporate organization.

As an advisor to former Greek Prime Minister George Papandreou, Varoufakis was studying the ongoing Eurozone economic crisis when he was contacted by Valve, who foresaw similar problems in its economy and the currency problems in Greece.

Varoufakis said he thinks the two problems are similar, and that while adapting the "anarchic" models of flat organization may be difficult, it could form a new economic model in the changing information technology industry.

"New companies, especially Internet-based ones that rely a great deal on creativity and human capital,

It seems fairly obvious that the Internet does a better job of organizing a bunch of individuals than General Motors or Sears does.

Gabe Newell, Valve founder

would benefit enormously from [Valve's model]," Varoufakis said. "Quite soon we are going to inhabit a future where there will be an interest contest between traditional corporations and corporations like Valve."

THE DAILY TEXAN

This issue of The Daily Texan is valued at \$1.25

Permanent Staff

Table listing staff members and their roles: Editor (Susannah Jacob), Associate Editors (Drew Finke, Pete Stroud, Edgar Walters), Managing Editor (Trey Scott), etc.

Issue Staff

Table listing issue staff: Reporters (Alexandra Dubinsley, Matthew Hart, Zach Lozano, Amanda O'Donnell), Sports Writers (Justin Nguyen), etc.

Business and Advertising

Table listing business and advertising staff: Director (Jalah Goette), Business Manager (Lori Hamilton), Advertising Adviser (CJ Salgado), etc.

Table with Texan Ad Deadlines: Monday, Wednesday, 12 p.m.; Tuesday, Thursday, 12 p.m.; Friday, Saturday, 12 p.m.; Wednesday, Friday, 12 p.m.

Recycling advertisement featuring a recycling symbol and text: 'THE DAILY TEXAN AFTER READING YOUR COPY RECYCLE' and 'SPRING BREAK ON THE FRIO RIVER RANDY ROGERS BAND KEVIN FOWLER PLUS MORE! 2 FESTS IN ONE! Concan, TX RiofrioFest.com'



Marshall Nolen | Daily Texan Staff

Gabe Newell, founder of Valve, talks about the benefits of his corporation's democratic structure in Sid Richardson Hall on Wednesday afternoon. Valve's gaming distribution platform Steam controls 70 percent of the market for downloadable videogames.

TITLE IX continues from page 1

to offer equal financial and educational opportunities to women," she said. "It wasn't associated with sports. It was a law solely intended to improve our education system."

Despite its early focus on education, Plonsky said Title IX is responsible for much of the success the UT sports program experiences today. "Our winnings, our offerings, our reputation is at its best today because of Title IX's initial passing," she said.

Plonsky said that Title IX recruited and offered scholarships to many young women who might not have had the chance to attend UT otherwise.

Our winnings, our offerings, our reputation is at its best today because of Title IX's initial passing.

Chris Plonsky, UT Athletics Director

"It's not about sports. It's not about numbers. It's about opportunities," Plonsky said. Paige Bauerkemper, an educational psychology graduate student, said she was surprised by the talk although she previously studied female student-athletes.

"I was really impressed to hear how UT was such a pioneering factor in women's sports," Bauerkemper said.

The program coordinator for the Distinguished Speaker Series, Charles Lu, said he hoped students' general interest in UT athletics would incite them to learn more about the program's past.

"I try to choose topics I think the students would find of interest. I think it's important that we understand the history behind school sports," Lu said.

NEWS BRIEFLY

Protesters damage government building

ATHENS, Greece — Protesters forced their way into a government building in Greece's latest anti-austerity protests Wednesday, reaching just outside a minister's office before being expelled and clashing with riot police outside.

Police detained more than 30 protesters, most union heads, sparking clashes with about 200 demonstrators gathered outside the Labor Ministry in central Athens. Police used pepper spray, batons and tear gas to repel them.

The government said the demonstrators caused damage inside the building and threatened the minister — an accusation the protesters adamantly denied.

Massive cargo airship to be used in disasters

TUSTIN, Calif. — The massive blimp-like aircraft flies but just barely, hovering only a dozen feet off a military hangar floor during flight testings.

Still, the fact that the hulking 230-foot-long Aeroscraft could fly for just a few minutes represents a step forward in aviation. The Department of Defense and NASA have invested \$35 million in the prototype because of its potential to one day carry more cargo than any other aircraft to disaster zones and forward military bases.

The airship is undergoing testing this month at Marine Corps Air Station in Tustin, and must go through several more rounds of flight testing before it could be used in a disaster zone or anywhere else.

Week of unrest weakens Morsi's leadership

By Hamza Hendawi & Maggie Michael
Associated Press

CAIRO — Egypt's Islamist president has been significantly weakened by a week of violent protests across much of the country, with his popularity eroding, the powerful military implicitly criticizing him and some of his ultraconservative Islamist backers distancing themselves from him.

In his seven months since becoming Egypt's first freely elected president, Mohamed Morsi has weathered a series of crises. But the liberal opposition is now betting the backlash against him is so severe that he and his Muslim Brotherhood will be forced to change their ways, breaking what critics say is their monopolizing of power.

Critics claim that Morsi's woes are mostly self-inflicted, calling him overconfident and out of sync with the public. Now the relatively high death toll — around 60 — the spread of protests and the use of excessive force by the police are feeding a wave of anger at the Egyptian leader and the Brotherhood, the Islamist group from which he hails and which is the foundation of his administration.

Morsi did not help matters when he addressed the nation Sunday night in a brief but angry address in which he at times screamed and wagged his finger. In that speech, he slapped a 30-day state of emergency and curfew on three Suez Canal provinces hit the hardest by the violence and vowed to take even harsher measures if peace is not restored.

In response, the three



Khalil Hamra | Associated Press

Egyptian riot police arrest a young man during clashes with protesters near Tahrir Square, Cairo, Egypt on Wednesday. Egypt's liberal opposition leader called for a broad national dialogue aimed at stopping the country's eruption of political violence.

cities defied the president in a rare open rebellion that handed him an embarrassing loss of face.

Thousands in the cities of Port Said, Ismailiya and Suez took to the streets on Monday and Tuesday just as the 9 p.m. curfew went into force. Underlining their contempt for him, they played soccer games, stores stayed open and there were even firework displays — all while troops deployed in Port Said and Suez stood by and watched.

Morsi was forced to back down somewhat and authorized the local governors to ease the measures. All three quickly did on Wednesday, reducing the hours of curfew from nine hours to as

short as three.

The main opposition coalition, the National Salvation Front, demands Morsi create a national unity government and rewrite controversial parts of the constitution that the Brotherhood and other Islamists rammed through to approval last month. A broader government, they insist, is the only way to ease the violence and start dealing with Egypt's mounting woes — particularly, an economy many fear is collapsing.

The liberals gained an unusual ally on Wednesday: one of the main political parties of the ultraconservative Islamist movement known as Salafis,

the al-Nour Party, which has usually supported Morsi.

Morsi appears to see no need for concessions. On a quick visit to Germany on Wednesday, he downplayed the significance of the week's violence.

"What is happening now in Egypt is natural in nations experiencing a shift to democracy," Morsi told reporters in Berlin.

There is no need to form a unity government, he added, because a new government will be formed after parliament elections — expected in April at the earliest.

Morsi's reply to critics who demand he widen the circle of decision-making has been to invite

opponents to a national dialogue conference to discuss key issues. Almost all opposition parties have refused, calling the conference window-dressing for Brotherhood domination. The conference has held multiple sessions, mainly attended by Morsi's Islamist allies.

Morsi's supporters — and some of his aides — accuse the opposition of condoning violence and trying to overturn the democratic results of elections that brought Morsi and the Brotherhood to power.

Meanwhile, anger on the streets is mounting. Politicians may call for a unity government, but a growing bloc of the protesters say Morsi must go outright.

Inauguration performer killed

By Don Babwin
Associated Press

CHICAGO — A 15-year-old girl who performed in President Barack Obama's inauguration festivities is the latest face on the ever-increasing homicide toll in the president's hometown, killed in a Chicago park as she talked with friends by a gunman who apparently was not even aiming at her.

Chicago police said Hadiya Pendleton was in a park about a mile from Obama's home in a South Side neighborhood Tuesday afternoon when a man opened fire on the group. Hadiya was shot in the back as she tried to escape.

The city's 42nd slaying of the year is part of Chicago's bloodiest January in more

than a decade, following on the heels of 2012, which ended with more than 500 homicides for the first time since 2008. It also comes at a time when Obama, spurred by the Connecticut elementary school massacre in December, is actively pushing for tougher gun laws.

Hadiya's father, Nathaniel Pendleton, spoke Wednesday at a Chicago police news conference, which was held in the same park where his daughter died.

"He took the light of my life," Pendleton said. He then spoke directly to the killer: "Look at yourself, just know that you took a bright person, an innocent person, a nonviolent person." Chicago Police Superintendent Garry McCarthy consoled him, the girl's mother and 10-year-old brother.

Hadiya was a bright kid who was killed just as she was "wondering about which lofty goal she wanted to achieve," her godfather, Damon Stewart, told The Associated Press. Hadiya had been a majorette with the King College Prep band.

White House press secretary Jay Carney said Wednesday that the president and the first lady's "thoughts and prayers are with" the teen's family, adding: "And as the president has said, we will never be able to eradicate every act of evil in this country, but if we can save any one child's life, we have an obligation to try when it comes to the scourge of gun violence."

In Chicago, gangs routinely and often indiscriminately open fire.

— live west —
LIVE BEST

APPLY TODAY



TEXAN & VINTAGE
WEST CAMPUS

Now an American Campus community
Great location in West Campus — walk to class
Great views of downtown, campus & the hill country
Garage parking • Designer interior finishes

texanandvintage.com

Leasing Center: First floor of The Castilian • 2323 San Antonio St. • Austin TX 78705
512.478.9811 • Texan West: 2616 Salado • Vintage West: 904 W. 22½ Street

Official Student Housing Sponsor of UT Athletics

AN AMERICAN CAMPUS COMMUNITY

Catch the Excitement
a family friendly event
Downtown Port Arthur

Feb. 7-10 2013

2/8/13 :: Friday
Easton Corbin

2/9/13 :: Saturday
Whiskey Myers

2/9/13 :: Saturday
Chris Cagle

2/9/13 :: Saturday
Chubby Carrigy and the Bayou Swamp Band

2/10/13 :: Sunday
CJ Chenier & the Red Hot Louisiana Band

Parades :: Concerts :: Carnival :: Arts & Crafts
Food Vendors :: Street Entertainment
409.721.5717
mardigras.portarthur.com

MARDI GRAS OF SOUTHEAST TEXAS, INC.



VIEWPOINT

TXT MSG 2 GUV

Stand on the Drag during rush hour traffic and watch the drivers parade before you, playing with their phones as they go by. Yesterday, over the course of 10 minutes, we counted (approximately) 14 drivers consumed by tiny screens.

In the past, Gov. Rick Perry chose to ignore the parallel dangers between texting while driving and drinking and driving — which is illegal — but the rest of us Texans can no longer afford to do so. Ideological debates rage over the government's size and role in this state and country, but no matter what side of those divides you fall on, understand this: Every day more than 15 people are killed and 1,200 injured in accidents involving distracted drivers in general, according to the National Highway Traffic Safety Administration.

State lawmakers filed three bills this past November to address drivers distracted by handheld devices. The bills, according to The Texas Tribune, are HB 63, filed by state Rep. Tom Craddick (R-Midland) and numerous other coauthors; HB 41, filed by state Rep. Jose Menendez (D-San Antonio); and SB 28, filed by state Sen. Judith

Zaffirini (D-Laredo), a companion to HB 63. Craddick's and Zaffirini's bills would ban typing on a handheld device for the purpose of sending an electronic message while driving, while Menendez's bill seeks to make any use of a cell phone without a hands-free device illegal. "Banning texting while driving will undoubtedly save lives," Zaffirini said in a statement.

In 2011, a bill similar to the ones recently filed passed in the Legislature. But that law is not on the books because Gov. Perry vetoed it, saying, through a spokesman, "[The] key to dissuading drivers from texting while driving is information and education, not government and mismanagement," according to an account at the time in the Austin American-Statesman. Austin, El Paso, Galveston and San Antonio are among some two dozen Texas cities that currently ban texting while driving. The District of Columbia, Guam and 34 states ban texting while driving, too. Texas could have joined that roster but, thanks to Perry, texting drivers still predominate on many Texas roads, legally. The push for safety-interested legislation against texting while driving is not new. Prior

to the 2011 attempts, Zaffirini initially introduced a text-ban proposal in 2009.

"Texting while driving is reckless and irresponsible. I support measures that make our roads safer for everyone, but House Bill 242 is a government effort to micromanage the behavior of adults," Perry said in a press release about his 2011 veto. Perry's 2011 statement distinguished between the ban proposed and those laws already on the books in Texas that bar driving teenagers from texting and all drivers from texting in school zones. Perry's message described the "government's role" as "legitimate" with those rules for teens and school zones and as "overreaching" with a ban against texting adult drivers cruising on highways.

In 2013, when phone screens have become more consuming and numerous, Perry's ideology-driven illogic about bills banning texting while driving should not prevail. Republicans and Democrats support such bills. Voters, especially college-aged voters, many of whom text messaged long before they ever drove, should support legislation that will lead to improved safety for all of us.

GALLERY



A case for concealed carry on campus

Danny Zeng

Guest Columnist

I understand some of my peers' concerns regarding "guns on campus." From my perspective, their opposition to concealed carry on campus is largely based on fear of further violence, a fear that has been largely misplaced but nonetheless capitalized on by gun control groups at the national level.

But I question this first-response intuition that has been propagated by the mass media. To begin, I want to point out that guns on campus already de facto exist: A person with Concealed Handgun License (CHL) is allowed to carry his or her guns on 21st Street, Dean Keaton, and for that matter, all other public streets, sidewalks and outdoor areas. We attend an open campus where anyone may walk in and out. In this regard, those with CHL are already allowed to have guns on certain parts of campus. Guns are not allowed, however, on University premises, such as buildings and educational facilities.

The equation of guns with violence has been so pervasive in our culture that the possibility of guns curtailing violence is simply lost or rejected. After all, it is harder to prove if guns have prevented crimes than if guns were used to perpetrate crimes. Here are some thoughts and statistics on concealed carry on campus:

1. According to the U.S. Department of Education's Office of Postsecondary Education's statistics on campus safety, there were about 1,000 criminal offenses in 2011 across four-year public universities in Texas. Those offenses include: rape, burglary, aggravated assault, robbery and vehicle theft, among others. The question is, should individuals be in control of means for self-defense within reasonable limits against significant campus crimes? I know very little about mental issues, but it occurs to me that a person who is mentally unstable would find means to carry out

heinous acts regardless of regulations, if his or her fragile psyche compels such action. Therefore, regulating against the lawful bearing of arms is simply a perverse exclusion of law-abiding citizens from self-defense. Whether you personally agree with the choice of means for self-defense is secondary to the person's right to choose, especially considering the means in question conform with existing laws regulating concealed carry — namely, through a permitting process.

2. To obtain a CHL in Texas, a person has to complete 10 hours of training on gun laws, proficiency, storage and non-violent dispute resolutions taught by a Texas Department of Public Safety-certified CHL trainer, on top of strict eligibility requirements that cut out those with criminal backgrounds and psychiatric disorders. The process ensures that only law-abiding citizens are allowed to qualify for concealed carry licenses. TDPS reports that out of all the criminal convictions in Texas in 2011, only 120 out of 63,679, or about 0.2 percent of total criminal convictions, were of CHL holders. This strongly suggests that CHL holders are largely law-abiding citizens who simply want to have a means for self-defense.

3. Existing evidence does not point to a potential influx of guns on campus. Young people ages 18-29 constitute only about one out of every nine CHL applicants in Texas. The dominant college-age group (18-24) constitutes less than 5 percent — about 7,000 in raw numbers — of the total applicant pool in the state of Texas. Thus the notion that somehow universities will be flooded with guns as result of allowing law-abiding faculty and students with a CHL to exercise their right to self-defense is mere illusion and, frankly, demagoguery.

Taking these factors into account, it seems far-fetched to alarm against the sort of "armed matriculation" proposed by another columnist last week.

Zeng is the vice president of College Republicans and a government and finance senior from Houston.

Gov. Perry, get your abortion facts straight

Natalie San Luis

Daily Texan Columnist

Last Tuesday, a group of reproductive choice advocates gathered on the steps of the Texas State Capitol to celebrate the 40th anniversary of Roe v. Wade, the Supreme Court ruling that protected women's reproductive freedom. The location for this gathering was not coincidental: Many Texas lawmakers, including Gov. Rick Perry, have recently expressed intent to make abortion "a thing of the past," starting with procedures involving any pregnancy that is more than 20 weeks along.

At a press conference last December, Gov. Perry encouraged the Legislature to pass the ban on abortions "at the point a baby can feel the pain of being killed," citing inconclusive evidence regarding a fetus's capacity for pain at 20 weeks. UT senior Katy Waters, vice president of Voices for Reproductive Justice, said, "When abortions are that late, they're usually medically necessary. Most abortions occur before then, and abortion is already restrictive enough."

Furthermore, the ban is not based on sound science. According to the most comprehensive scientific study, "Fetal Pain: A Systematic Multidisciplinary Review of the Available Evidence," published in The Journal of the American Medical Association in 2005, fetuses do not develop the capability to sense pain until the third trimester. (Ironically, many of the legislators who are most dedicated to preventing potential fetal pain are also passionately defending the right to kill animals recreationally with firearms during this session.)

Legal action grounded in faulty science and misrepresentation of evidence can justify any number of rights violations and destructive policies. Regardless of partisan divides, citizens should hold their political leaders accountable when they distort the truth to further an agenda.

This obligation is particularly relevant for Texans. Our state lawmakers have a tendency to disregard logic to service political agendas, especially when it comes to women's health and rights. In the 18 months that have passed since the last legislative session, Texas women and women's health clinics have faced an uphill battle attaining basic health services aside from abortions. During the 2011 session, lawmakers slashed Texas' family planning budget by two-thirds, despite Texas' persistently high rate of unintended teen pregnancies. In addition, Planned Parenthood was cut from the Women's Health Program, an initiative created to help women with low incomes access women's wellness exams, cervical cancer screenings and birth control. The Planned Parenthood clinic closest to the UT campus on East 7th Street lost all its state funding, even though it does not offer abortion services. This decision was also based on shoddy data collection. "Their research methods were terrible. They only asked clinics if they can provide abortions, not if they will, and only 50 percent of the clinics responded," Waters said.

Other research has regularly shown that two factors significantly decrease the rate of unintended pregnancies, and, as a result, abortions: access to sex education and availability of contraceptives. And the Texas Legislature is notorious for fighting ardently against both.

Abortion rights will continue to be a divisive partisan issue for the foreseeable future. I'm an optimist, so I'm hoping that opposition to women's health care will soon fizzle out. But the expectation of fair, honest and well-informed leaders and representatives should be a priority regardless of political affiliation. When legislation affects the health and well-being of half the population, the very least Gov. Perry can do is get his facts straight.

San Luis is a Plan II, Women's and Gender Studies and English senior from Buda.

FIRING LINE

Repulsive, liberal drivel

In response to "Perry to Lege: I was wrong", published Tuesday, Jan. 29.

I was disgusted, to say the least, to read Tuesday's top column, which amounted to a bashing session of Rick Perry, who, like it or not, is the governor of our state. While the editorial board of a student newspaper is of course entitled to the right to express its opinion, I find it repulsive that the Texan so often posts liberal drivel that amounts to character assassination and then purports to represent the opinion of the entire student body of the University of Texas. I never dreamed that my alma mater would ridicule the murder of unborn children, claiming that Perry acted like "a cavalier Cowboy in his pursuit of an abortion-free Texas." The conflation of abortion with the law-

ful execution of convicted criminals can be called nothing milder than "evil." I am positive that were a similar column written about Barack Obama the columnist would be tarred and feathered and run out of town by a torch-wielding mob shouting, "RACIST!"

Here you have this golden opportunity, as a newspaper that enjoys the readership of thousands of American college students, to change the tone of the debate and encourage people of your generation to be effective, levelheaded leaders. Instead you resort to posting vitriolic, self-indulgent claptrap that belongs in the National Enquirer or maybe on MSNBC, not the student paper of the best university in the state of Texas.

— Karen L. Youngblood, Round Rock resident, UT Alum '84

WORK *continues from page 1*

the same time period. Melecki said a greater allocation from the Texas Legislature could help offset the work-study losses.

“We hope the Legislature will dramatically increase appropriations for the Texas College Work-Study Program so we can fund more on-campus employment opportunities for students,” Melecki said.

The Texas Senate’s proposed budget for the 2013-2014 biennium allocates the same amount of funding to the program as it did in the last session — \$7.5 million.

Work-study is a form of financial aid offered to students and funded by federal and state programs. Students who qualify are hired by the University but have 70-75 percent of their wages paid by the government, with the University paying the remainder.

State Sen. Kirk Watson, D-Austin, serves on the Senate Higher Education Committee and said in a statement he supports a possible funding increase to state work-study.

Although the amount of work-study funding has decreased, total student employment increased on campus from spring 2011 to fall 2012, according to Student Employment Adviser Amy Greenspan.

“The perception is that it’s really hard to get a job on campus if you are not work-study, and I don’t believe that is an accurate perception because the number of students on work-study versus the number of students who are not speaks for itself,” Greenspan said.

The total number of students working on campus increased from 10,399 workers in spring 2012 to 10,941 workers in fall 2012, Greenspan said. Ten percent of them qualified for a work-study subsidy.

“We don’t have a really direct way of measuring, but the number of student employees is up, so one interpretation might be that as funding and budgets get tight people hire more students because it’s less expensive to hire students than a regular staff person,” Greenspan said.

According to Melecki, the University cannot legally eliminate a staff job and replace it with a student employee. A high turnover rate at the University might make it easier for students to find jobs formerly held by regular staff people, Melecki said.

In fiscal year 2011, UT eliminated 200 positions according to UT System documents. An additional 400 positions were projected to be cut in fiscal year 2012, although the actual number of positions eliminated could have varied, UT spokeswoman Tara Doolittle said. Some of the non-faculty staff positions could be held by students, Doolittle said.

Independent of the causes or effects of a shift in University staffing, financial aid officer Linda Morgan said research indicates working on campus has a positive impact on students’ academic performance.

“Studies have shown that students who work less than 20 hours per week in on-campus jobs tend to perform better in their schoolwork and graduate on time than their peers who are working off campus or are working more than 20 hours per week,” Morgan said.

Watson said this is why he thinks the state’s work-study program could be a target for more funding.

“From what I know about the benefits to students through work-study

WORK STUDY REQUIREMENTS

STATE WORK STUDY

State government pays 75 percent of wages

- Texas resident
- Show financial need
- Register for the Selective Service (or sign an exemption statement)
- Enroll at least half time

FEDERAL WORK STUDY

Federal government pays 70 percent of wages

- Show documented financial need through the FAFSA
- Meet Satisfactory Academic Progress Policy standards
- Enroll at least half time



Go to a job fair. Go to hirealonghorn.com. Make sure your resume is good and you have enough references that when someone calls your references they will be able to give them a good idea of who you are. Practice for interviews or you might not get in what you what them to know about you. Make sure you do all of this early.

HOLLY CHAPMAN SENIOR PSYCHOLOGY STUDENT

Enrolled in work-study program at the School of Pharmacy

programs, this would be a primary place to look for additional funding,” Watson said.

The benefits of the work-study program to anthropology senior Elizabeth Melville include having a work environment that accounts for her class schedule.

“You don’t have that high stress level of having to sacrifice your class time for your job,” Melville said.

She said working at an on-campus job also gives her exposure to networking that other off-campus students might not have.

“Being in a library is something special,” Melville said. “When professors come in you get to learn who they are and network. There’s a constant focus on the academic world. I think with waitressing, there would be less of that.”

Melville said work also helps her manage her time.

“I am really glad I have a job because it helps you structure your life much more concisely, and it builds your work ethic,” Melville said. “It’s not just a way of making money, but also a way to develop into a person going into the workforce.”

Aside from benefits to students, work-study funds are critical to filling staff positions at UT because they reduce employment costs for each department, financial aid officer Linda Morgan said.

“You get a lot of bang for your buck,” Morgan said. “You could hire three work-study students for what it would cost to hire one non-work-study student. The reality is that some of the departments, even with the subsidy, cannot afford to hire three students.”

Morgan said 1,094 students received work-study positions in 2011-2012, which was more than 20 percent less than the number of students two years ago.

Money allocated from the American Recovery and Reinvestment Act helped bolster the program in 2009-2010, but the benefits of the program were short-lived. Cuts the following year resulted in UT ending its summer work-study program, which has not been reinstated, Morgan said.

“That was a fun year,” Morgan said. “It was essentially win, win, win all the way around, but the very

next year it dipped below the line where we were before and has continued to go down ever since.”

As the number of students who take jobs at the University increases, it is important they find a job they can manage along with schoolwork, Melecki said.

Among dropouts responding to a University study that concluded in 2011, off-campus workers were more likely than their on-campus peers to say work negatively impacted their school performance. Just under 60 percent of students working off campus said their schoolwork was negatively impacted by work. The same percentage of respondents working on campus said their academic performance was unaffected by working while going to college.

Psychology senior Holly Chapman said balancing work and school is made easier by working on campus.

“Since it’s basically a 9-to-5 job and you don’t have to work weekends, you can study then,” Chapman said.

Journalism senior Frances Bello doesn’t have the luxury of a five-day workweek. Sunday is the only day she doesn’t work at Burnet Road Self Storage or attend UT. Bello said while she understands the convenience of working on campus, she feels her off-campus job will also provide a substantial benefit in the job market when she starts looking for a job after graduation.

“In general, having a job doesn’t give you as many options for extracurricular activities and internships,” Bello said. “If you’re off campus there is going to be even less of that, but I feel like employers are looking for some kind of job experience. There are advantages and disadvantages to working, but I feel like it’s genuinely going to help me find a job after I graduate.”

Morgan said striking a balance between work and academics is essential to success at UT.

“Your full-time job is going to school and getting your degree,” Morgan said. “This job is meant to be less than part time, frankly. If you have extra time use it on your studies, but remember why you came to UT in the first place. Keep your eye on the prize.”



OFFICE OF THE SENIOR ASSOCIATE VICE PRESIDENT FOR STUDENT AFFAIRS AND DEAN OF STUDENTS
THE UNIVERSITY OF TEXAS AT AUSTIN

100 West Dean Keeton Street A5800 • Austin, Texas 78712-1100 • 512-471-5017 • 512-471-7833 • deanofstudents.utexas.edu

Date: January 31, 2013
To: All Students at The University of Texas at Austin
From: Dr. Soncia Reagins-Lilly, Senior Associate Vice President for Student Affairs and Dean of Students
Subject: **TEXAS HAZING STATUTE SUMMARY AND THE UNIVERSITY OF TEXAS AT AUSTIN’S HAZING REGULATIONS**

The 70th Texas Legislature enacted a law concerning hazing. Under the law, individuals or organizations engaging in hazing could be subject to fines and charged with a criminal offense.

According to the law, a person can commit a hazing offense not only by engaging in a hazing activity, but also by soliciting, directing, encouraging, aiding or attempting to aid another in hazing; by intentionally, knowingly or recklessly allowing hazing to occur; or by failing to report, in writing to the Dean of Students or another appropriate official of the institution, first-hand knowledge that a hazing incident is planned or has occurred. The fact that a person consented to or acquiesced in a hazing activity is not a defense to prosecution for hazing under this law.

In an effort to encourage reporting of hazing incidents, the law grants immunity from civil or criminal liability to any person who reports a specific hazing event in good faith and without malice to the Dean of Students or other appropriate official of the institution and immunizes that person for participation in any judicial proceeding resulting from liability that might otherwise be incurred or imposed as a result of the report. Additionally, a doctor or other medical practitioner who treats a student who may have been subjected to hazing may make a good faith report of the suspected hazing activities to police or other law enforcement officials and is immune from civil or other liability that might otherwise be imposed or incurred as a result of the report. The penalty for failure to report is a fine of up to \$1,000, up to 180 days in jail, or both. Penalties for other hazing offenses vary according to the severity of the injury which results and include fines from \$500 to \$10,000 and/or confinement for up to two years.

HAZING DEFINED

The law defines hazing as **any intentional, knowing or reckless act, occurring on or off the campus of an educational institution, by one person alone or acting with others, directed against a student, that endangers the mental or physical health or safety of a student for the purpose of pledging, being initiated into, affiliating with, holding office in or maintaining membership in any organization whose members are or include students at an educational institution.** Hazing includes but is not limited to:

- A. any type of physical brutality, such as whipping, beating, striking, branding, electric shocking, placing of a harmful substance on the body or similar activity;
- B. any type of physical activity, such as sleep deprivation, exposure to the elements, confinement in a small space, calisthenics, or other activity that subjects the student to an unreasonable risk of harm or that adversely affects the mental or physical health or safety of the student;
- C. any activity involving consumption of food, liquid, alcoholic beverage, liquor, drug or other substance which subjects the student to an unreasonable risk of harm or which adversely affects the mental or physical health of the student;
- D. any activity that intimidates or threatens the student with ostracism, that subjects the student to extreme mental stress, shame or humiliation, that adversely affects the mental health or dignity of the student or discourages the student from entering or remaining registered in an educational institution, or that may reasonably be expected to cause a student to leave the organization or the institution rather than submit to acts described in this subsection;
- E. any activity that induces, causes or requires the student to perform a duty or task which involves a violation of the Penal Code.

UNIVERSITY DISCIPLINARY RULES

This law does not affect or in any way limit the right of the university to enforce its own rules against hazing under Chapter 14 of the *Institutional Rules on Student Services and Activities*.

DANGEROUS OR DEGRADING ACTIVITIES

Activities which under certain conditions constitute acts which are dangerous, harmful or degrading, in violation of Chapter 14 and subsections 6-303(b)(3) and 11-404(a)(8) of the *Institutional Rules on Student Services and Activities* include but are not limited to:

- ▶ Calisthenics, such as sit-ups, push-ups or any other form of physical exercise;
- ▶ Total or partial nudity at any time;
- ▶ The eating or ingestion of any unwanted substance;
- ▶ The wearing or carrying of any embarrassing, degrading or physically burdensome article;
- ▶ Paddle swats, including the trading of swats;
- ▶ Pushing, shoving, tackling or any other physical contact;
- ▶ Throwing any substance on a person;
- ▶ Consumption of alcoholic beverages accompanied by either threats or peer pressure;
- ▶ Lineups for the purpose of interrogating, demeaning or intimidating;
- ▶ Transportation and abandonment (road trips, kidnaps, walks, rides, drops);
- ▶ Confining individuals in an area that is uncomfortable or dangerous (hot box effect, high temperature, too small);
- ▶ Any form of individual interrogation;
- ▶ Any type of servitude that is of personal benefit to the individual members;
- ▶ Wearing of embarrassing or uncomfortable clothing;
- ▶ Assigning pranks such as stealing, painting objects, harassing other organizations;
- ▶ Intentionally messing up the house or a room for clean up;
- ▶ Demeaning names;
- ▶ Yelling or screaming; and
- ▶ Requiring boxing matches or fights for entertainment.

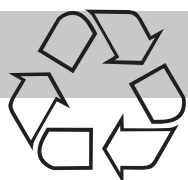
DISCIPLINED ORGANIZATIONS, INCLUDING THOSE RESOLVED VIA MUTUAL AGREEMENTS

In accordance with requirements of the *Texas Education Code* Section 51.936(c), the following organizations have been disciplined for hazing and/or convicted for hazing, on or off campus, during the preceding three years:

- ▶ **Alpha Epsilon Pi** *Penalty issued August 17, 2011 (Probation through August 17, 2013).*
- ▶ **alpha Kappa Delta Phi*** *Conditional registration is three (3) years (June 10, 2013).*
- ▶ **Alpha Kappa Psi-Business** *Found to be in violation; Penalty pending.*
- ▶ **Alpha Rho Chi-Architecture*** *Conditional registration is three (3) years (May 29, 2015).*
- ▶ **Alpha Tau Omega*** *Conditional registration is two (2) years (August 15, 2014).*
- ▶ **Beta Chi Theta*** *Conditional registration is one (1) year (Completed August 24, 2010).*
- ▶ **Delta Sigma Phi** *Found to be in violation; Penalty pending.*
- ▶ **Delta Sigma Theta Sorority, Inc.** *Penalty issued November 10, 2009 (Suspended through December 31, 2009; Probation through October 30, 2012).*
- ▶ **Delta Tau Delta*** *Conditional registration is two (2) years (Completed September 9, 2012).*
- ▶ **Kappa Phi Gamma Sorority, Inc.*** *Conditional registration is two (2) years (April 30, 2014).*
- ▶ **Lambda Phi Epsilon** *Penalty issued December 20, 2005 (Cancelled through December 19, 2011; Suspended through December 19, 2012; Probation through December 19, 2013).*
- ▶ **Omega Phi Gamma*** *Conditional registration is three (3) years (July 13, 2014).*
- ▶ **Phi Chi Theta-Business*** *Conditional registration is two (2) years (July 8, 2014).*
- ▶ **Phi Delta Chi-Pharmacy*** *Conditional registration is one (1) year (Completed March 5, 2010).*
- ▶ **Phi Delta Theta*** *Conditional registration is two (2) years (August 9, 2014).*
- ▶ **Phi Gamma Delta*** *Conditional registration is two (2) years (Completed July 15, 2010).*
- ▶ **Phi Kappa Psi** *Penalty issued February 7, 2006 (Cancelled through February 6, 2007; Suspended through March 27, 2008; Probation through March 24, 2010).*
- ▶ **Pi Kappa Phi*** *Conditional registration is two (2) years (February 27, 2014).*
- ▶ **Sigma Alpha Epsilon*** *Conditional registration is five (5) years (April 7, 2013).*
- ▶ **Sigma Alpha Mu*** *Conditional registration is two (2) years (April 20, 2014).*
- ▶ **Sigma Chi*** *Conditional registration is two (2) years (Completed May 16, 2010).*
- ▶ **Sigma Gamma Rho Sorority, Inc.*** *Conditional registration is one (1) year (Completed August 16, 2010).*
- ▶ **Sigma Phi Epsilon*** *Conditional registration is two (2) years (Completed September 1, 2012).*
- ▶ **Silver Spurs*** *Conditional registration is two (2) years (July 13, 2013).*
- ▶ **Texas Cheer and Pom*** *Conditional registration is two (2) years (Completed July 23, 2011).*
- ▶ **Texas Iron Spikes*** *Conditional registration is three (3) years (March 7, 2014).*
- ▶ **Texas Omicron (formerly known as Kappa Alpha)*** *Conditional registration is three (3) years (April 11, 2015).*
- ▶ **Texas Wranglers*** *Conditional registration is two (2) years (Completed October 6, 2010).*
- ▶ **Zeta Beta Tau*** *Found to be in violation; Penalty pending.*

**Resolved via Mutual Agreement*

To report an act of hazing to the Office of the Dean of Students, visit deanofstudents.utexas.edu/complaint.php. For further information or clarification of probationary member activities, please contact Student Activities in the Office of the Dean of Students, Student Services Building (SSB) 4.400, 512-471-3065.



RECYCLE

THE DAILY TEXAN
AFTER READING YOUR COPY



Blaire Luna, Senior

PITCH PERFECT?

SOFTBALL

2013: Luna's last chance to win it all

By Jori Epstein

In a team brimming with personality, not everyone can be the clown. Senior Blaire Luna plays a silent role, letting her teammates assume center stage in the dugout before stepping up to star in the center of the diamond.

Certainly a positive influence on most games, Luna holds a career record of 80-23 with a 1.61 ERA while striking out 1,006 and walking 280 in 662.2 innings and holding

opposing hitters to a .165 batting average. Last season, her records included: 286 strikeouts (fourth in the Big 12, 17th nationally), 10.6 strikeouts per seven innings (third in the nation) and 35 shutouts (sixth in Big 12 history).

But after Luna allowed five runs on three hits in the final game against Oregon last season, she wanted to reassess. "It was really tough watching the World Series from home on the couch, not being there," Luna said. "But we'll use that as motivation. The thing that affected me last year was confidence. This year, I've worked on hitting my spot so I can go out there and not think so much."

With a dual focus on conditioning and confidence, Luna spent the offseason training. Her assertion is clear to

head coach Connie Clark, who believes last year's Regional was a "series well played but [makes Blaire] hungry because she had an opportunity to shut the door."

"I think she's going to keep that in the back of her mind through this season," Clark said. "Blaire's always that quiet competitor but she's speaking up more in team meetings than in the past. When she says something, people listen. She's competitive, hungry, has the experience and wants to go out on a high note; I don't think she'll be satisfied without that."

When pitcher Rachel Fox transferred to Texas A&M before the season, Luna's

LUNA continues on page 7

BASEBALL

Starring role not foreign for French

By Sara Beth Purdy

Before the first pitch in 2012, the Longhorns were looking to ace Sam Stafford to lead the Texas pitching rotation. But a shoulder injury ended Stafford's season before it started.

Parker French, then a freshman, was battling for playing time but, thanks to an alarming number of injuries and shortcomings, he found himself on the mound as the go-to guy for the Longhorns on Friday nights by midseason. He enters this year as the team's ace.

"I'm trying not to think about it, trying to take away all the expectations," French said of starting. "Coach [Augie] Garrido always says expectations never lead to good things."

The 2012 Big 12 Freshman of the Year was named as the Friday night starter for the Longhorns and will lead the young and inexperienced pitching staff to start off the 2013 season. Garrido, the head coach, expressed confidence in the sophomore right-hander but failed to name any of the other potential starters.

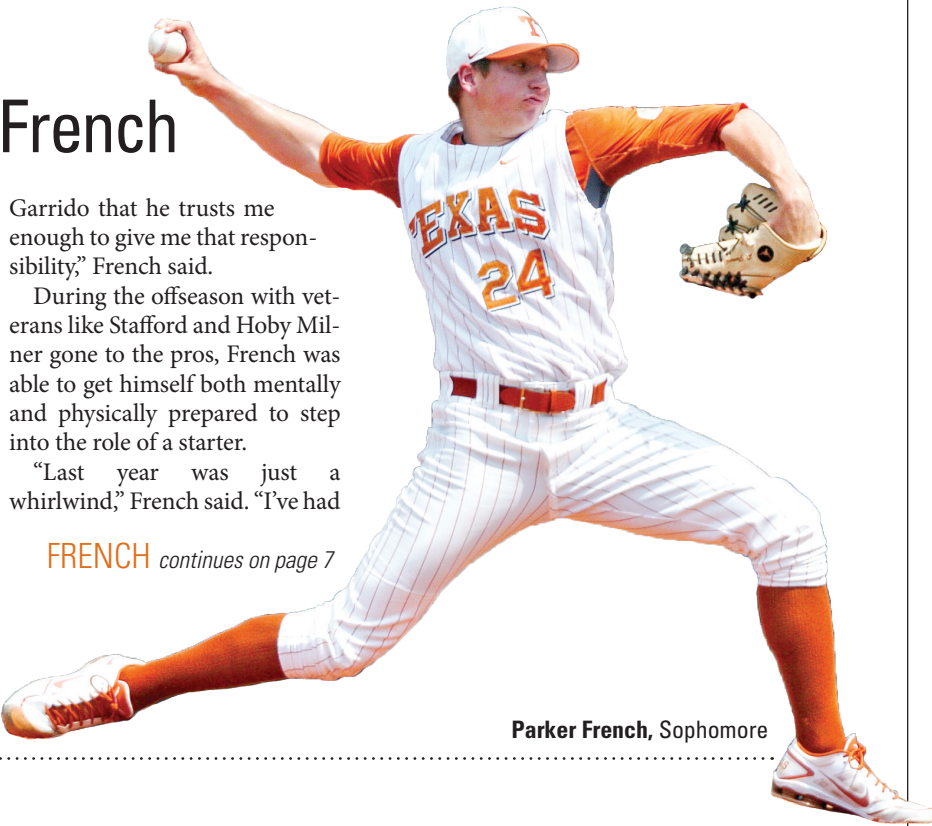
"It is a great honor coming from somebody like Coach

Garrido that he trusts me enough to give me that responsibility," French said.

During the offseason with veterans like Stafford and Hoby Milner gone to the pros, French was able to get himself both mentally and physically prepared to step into the role of a starter.

"Last year was just a whirlwind," French said. "I've had

FRENCH continues on page 7



Parker French, Sophomore

COLUMN

Texas baseball, softball squads will need great pitching

By Christian Corona
Sports Editor

Texas' baseball and softball teams didn't go out the way they wanted last year.

Augie Garrido's squad missed out on the NCAA Tournament for the first time since 1998 and the Longhorns softball team fell one win short of reaching

the Women's College World Series for the first time in six seasons.

It was a disappointing end to the year and a finish both teams can avoid if their pitching staffs let them.

"It's definitely not a heart-break at all," junior Corey Knebel said. "I guess it's just a little pissed off. We're definitely wanting to come back with a lot of motivation to redeem ourselves."

Knebel made little effort to hide his frustration with his role last April, when he claimed to be getting mixed messages from the Texas coaching staff on whether he would be a starter or closer. But now the feared reliever is right where the Longhorns need him — at the back end of the bullpen.

"He is very comfortable and knows that it's in the team's best interest for him

"We're definitely wanting to come back with a lot of motivation to redeem ourselves.

— Corey Knebel, Junior closer

to be the closer," head coach Augie Garrido said.

At the front end of the rotation will be sophomore Parker French, who emerged as the Longhorns' ace starting pitcher as a freshman last

year before an elbow injury prematurely ended his season. French had a streak of 33 2/3 consecutive scoreless innings as a freshman and,

PITCH continues on page 7

MEN'S BASKETBALL | NO. 18 KANSAS STATE 83, TEXAS 57

Kansas State guard Shane Southwell reaches for the ball while covered by Texas guard Sheldon McClellan during the first half in Manhattan, Kan., on Wednesday.



Orlin Wagner
Associated Press

Wildcats rout Texas in lopsided win

By Christian Corona

The Longhorns are in the midst of the program's worst season under head coach Rick Barnes, but they may have reached a new low in their most recent defeat.

Texas has suffered some crushing losses this year, but none were as lopsided as

the one No. 18 Kansas State handed it Wednesday night. The Wildcats pummeled the Longhorns 83-57, at Bramlage Coliseum in Manhattan, Kan. It's Texas' worst road loss since the inception of the Big 12 in 1996.

"This is a pretty easy one to figure out," Barnes said. "We were not ready to play right from the beginning,

rebound, and is this is what you get. We definitely deserved what we got because we did not do anything right in a lot of ways and they did a lot."

Iowa State trounced the Longhorns by 20 points earlier this month. Georgetown crushed Texas by 23 while

ROUT continues on page 7

BIG 12 WOMEN'S BASKETBALL

Griner breaks record, scores 40 in Lubbock

LUBBOCK, Texas — Brittney Griner took down another record Wednesday night, prompting coach Kim Mulkey to reminisce about when the senior first arrived at Baylor.

Griner broke the Big 12 women's scoring record while pouring in 40 points, leading the top-ranked Lady Bears to a 90-60 victory over Texas Tech.

"When Brittney came four years ago I told everybody, 'You better buy tickets. You'll never see anything like her again,' and at the time you didn't talk about the records that she would break," said Mulkey, who added fans in Waco would honor the senior's latest accomplishment at some point. "But after you saw her play it was pretty obvious she's going to be a phenom and it's not surprising that she's broken those records."

It was the fourth career 40-point performance for Griner, who also had 15 rebounds for her 51st double-double.

"Just happy to get the win really first," Griner said. "My team did a good job of getting me the ball, good looks. When I didn't have a shot they did a great job on cutting to the basket so I could find them. We were just clicking from the jump, we were on all cylinders."

Griner passed Oklahoma State's Andrea Riley for the record while scoring the first four points of the game, giving her 2,837 for her career. Riley had 2,835 points from 2007-10.

Brooklyn Pope added 14 points for Baylor (19-1, 9-0).

Kelsi Baker scored 12 points for Texas Tech (16-5, 6-3), which had won four in a row.

—Associated Press

SIDELINE

NBA

BOBCATS
78

SPURS
102

ROCKETS
110

NUGGETS
118

NCAAM

OKLAHOMA
74

BAYLOR
71

IOWA STATE
76

OKLA ST
78

TEXAS A&M
55

MISS. ST
49

TOP TWEET

Dean Melchionni
@UncleDream717
"I often wonder how many questions went unanswered in my childhood because I didn't have access to google?"

SPORTS BRIEFLY

Stone finalist for Ben Hogan Award

Freshman Brandon Stone was named Wednesday to the 2013 the Ben Hogan Award watch list. The Ben Hogan Award is the most coveted award in college golf and is presented to a male college athlete every year based on the athlete's performance in all amateur and collegiate competitions.

Stone, from Pretoria, South Africa, is a key player for the Longhorns, who are hoping for a second straight national title. His stroke average of 70.89 leads the team. Stone is currently ranked No. 3 among college golfers based on Golfweek/Sagarin rankings. Last season, Jordan Spieth was named to the award's watch list. Stone was one of 27 to be named to the list.

Rising Star game selects Thompson

Former Longhorn Tristan Thompson, now with the Cleveland Cavaliers, was selected to play in the 2013 Rising Star Challenge. He is one of 18 players to be selected for the game which will be played on Feb. 15 in Houston.

The Rising Star Challenge is traditionally made up of top performing first and second year players in the NBA. It is formerly known as the Rookie-Sophomore Game. Shaquille O'Neal along with TNT's Charles Barkley will select the teams before the game.

— Sara Beth Purdy

FRENCH

continues from page 6

a little bit more time to prepare myself, compose myself. Get my mind-set ready to go.” In addition to tweaking the grip of his change-up, his go-to pitch, French has been working on his slider, hoping to feature it a bit more once the season gets started. He has also been working both sides of the plate with his fast-ball over the fall.

“There weren’t any huge major changes, just fine-tuning stuff so I’ll be ready to go,” French said.

As a starter, French posted a 6-2 record with two saves and a season ERA of 2.84. In total, he started nine games with 21 total appearances. In Big 12 conference play, he saw action in eight games, starting seven, and posted a 4-1 record and 2.54 ERA.

However, his season was cut short last year like so many of his teammates. French sustained a stress fracture to his elbow while pitching at Missouri. He was taken out in the fifth inning of the 6-4 win. Although an MRI indicated that no surgery would be needed, French was ruled out for the rest of 2012 in order to heal.

“[I’m] 100 percent ready to go. No problems, my arm feels really strong,” French

said at the beginning of spring practices last week. “That’s one of my goals, to get through this whole year healthy, just keep my body in good shape, putting in hours in the weight room just to be able to take the pounding and grinding of a long season.”

French did not see action during the fall for the Longhorns in matches against Sam Houston State and Texas State and has yet to face a true opponent since his injury last season. In the meantime, French has been throwing against the Texas hitting contingent, preparing himself for Sacramento State in mid-February as well as the alumni game Saturday.

“We have a lot of tough outs in our lineup, it’s not a cakewalk,” French said of facing his fellow Longhorns. “You got to go out there and compete, you got to make pitches cause they hit mistakes and they hit them hard.”

French has also taken his role as the Friday starter one step past his normal pitching duties. “I look at it as more of a leadership role,” he said. “It is my job to go out there and show the guys how we are going to compete as a staff and set the tone for the whole weekend ... and when I am done throwing, just to get behind my teammates and support them from the dugout.”

LUNA

continues from page 6

role as mentor elevated. She joins fellow senior Kim Bruins, sophomore Gabby Smith and freshman Holly Kern for what Clark describes as “a lot of different looks.”

“We’ve got a staff of four and all four of them will get the ball early, probably in our initial tournament,” Clark said. “Blaire is someone we’ll have to rely on heavily this year — she’s going to be our go-to girl — but it’s a good year to have youth whether it’s in the circle or anywhere else, when you still have a couple of very good pitchers like [Luna and Bruins].”

Smith looks to Luna not only as a go-to teammate but also as a teacher.

“She leads by example because when she’s out on the mound, she’s ready — ready to go,” Smith said. “That helps us be ready as well.”

Smith said Luna has taught her to be patient and relax.

“If something goes wrong, someone hits a home run or gets a good hit? [Blair taught me] to just breathe it and don’t take it too seriously, to have fun.”

“She leads by example because when she’s out on the mound, she’s ready — ready to go. That helps us be ready as well.”

— Gabby Smith, Sophomore pitcher

As she teaches others, Luna also constantly works to improve herself. She’s practiced a new change-up for the season and aims to pitch every game, though she admits it may not be realistic. Drawing inspiration from the volleyball team’s championship, Luna looks to competitors as well to intensify her hunger. Namely, 2012 USA Softball Collegiate Player of the Year and rival pitcher, Keilani Ricketts of Oklahoma.

“It’s tough [being in the same conference as Ricketts], she’s a great picture and she’s very dominating,” Luna said. “But she helps our team. Our mentality is that if we can hit her, we can hit anyone else.”



Orlin Wagner | Associated Press

Kansas State guard Angel Rodriguez (13) gets past Texas guard Javan Felix (3) for a basket during the second half of an NCAA college basketball game in Manhattan.

ROUT

continues from page 6

holding it to a Barnes era-worst 41 points. Even Cham-inade beat the Longhorns by double digits last November. But, before Wednesday, Texas had not lost by as many as 26 points since a 97-66 loss to top-ranked Duke while wearing black jerseys on Dec. 10, 2005.

Texas (9-11, 1-6) was held to just 19 points in the first half. At the 7:30 mark of the opening half, the Longhorns had nine points and eight turnovers, numbers that were indicative of their dreadful performance Wednesday.

Kansas State (16-4, 5-2) scored 33 points off 18 Texas turnovers while the Longhorns, who scored just eight points off six Wildcats turnovers, did not hit a three-pointer until the 17:42 mark of the second half and committed more than twice as many turnovers (18) as the number of assists they recorded (8).

“We do not move,” Barnes

said. “That is all we have worked on for two to three weeks now. Guys make one or two cuts and good teams will make you get the ball. Our post guys did not do a lot early that we wanted them to.”

Sophomore guard Sheldon McClellan led Texas with 15 points but struggled shooting from the floor once again, making just three of 12 field goal attempts. He is just 5-for-19 (26.3 percent) from the floor in his last two games.

Sophomore forward Jaylen Bond scored 12 points and grabbed a game-high eight rebounds while playing a season-high 21 minutes. Bond’s playing time has been limited since returning from a foot injury that forced him to miss nine games earlier this season, but played well, especially in the second half.

Texas will try to bounce back when it hosts TCU this Saturday.

PITCH

continues from page 6

equipped with a slider he’s been working on this off-season, should be a reliable Friday-night starter.

As for what the Longhorns pitching staff will look at between French and Knebel, not much has been decided. Nathan Thornhill and Dillon Peters are solid options to fill out the rotation while freshman Chad Hollingsworth is showing plenty of promise. Between them, Texas has the foundation for what can be a staff that will rack up a lot

of wins, although it may not rack up many strikeouts.

“We don’t have a lot of guys that are going to blow you away on the radar gun,” French said. “If they hit it, so what? Most of the time, you’re going to succeed as a pitcher. You have to believe that if you throw this pitch, they’re going to pop it up or hit it on the ground.”

Senior Blaire Luna, the Texas softball team’s ace each of the last three years, isn’t one to pitch to contact.

She has fanned 1,006 hitters during her career and nearly led the Longhorns to the WCWS last season. But Texas lost the final two games of its Super Regional series against Oregon after winning the opener.

Without Rachel Fox, a rising junior who transferred to Texas A&M this off-season, the Longhorns will lean heavily on Luna this year. And if there’s a pitcher that can carry Texas to the WCWS, it’s Luna.

“She’s hungry. She wants to go out on a high note,” head coach Connie Clark said. “She’s never going to be that vocal leader but she’s really stepped up and speaking up a little more in team meetings. Any time you have an athlete like that, when she says something, people listen.”

Luna claims that she prefers to let her play do the talking. But others say she’s more outgoing than she seems around the cameras.



THE DAILY TEXAN CLASSIFIEDS

Self-serve, 24/7 on the Web at www.DailyTexanOnline.com

ADVERTISING TERMS There are no refunds or credits. In the event of errors made in advertisement, notice must be given by 10 am the first day of publication, as the publishers are responsible for only ONE incorrect insertion. In consideration of The Daily Texan's acceptance of advertising copy for publication, the agency and the advertiser will indemnify and save harmless, Texas Student Media and its officers, employees and agents against all loss, liability, damage and expense of whatsoever nature arising out of the copying, printing or publishing of its advertisement including without limitation reasonable attorney's fees resulting from claims of suits for libel, violation of right of privacy, plagiarism and copyright and trademark infringement. All ad copy must be approved by the newspaper which reserves the right to request changes, reject or properly classify an ad. The advertiser, and not the newspaper, is responsible for the truthful content of the ad. Advertising is also subject to credit approval.

EMPLOYMENT

766 Recruitment

\$5,500-\$10,000 PAID EGG DONORS

All Races. SAT>1100/

ACT>24/GPA>3.0 N/Smokers, Ages 18-27 Reply to: info@egg-donorcenter.com

790 Part Time

BARTENDING! \$300/DAY POTENTIAL

No experience necessary. Training available. Age 18+. 800-965-6520 ext. 113

SING ALONG TO THE OLDIES with a sweet grandmother who has memory loss. Prepare meals and run errands. West Lake Hills home. Non-smoker with good driving record. Tuesdays 7:00am-3:45pm. Some Saturdays and/or Sundays 7:00am-8:00pm. \$13.50 per hour. 512-477-6866

870 Medical

FAIRPLAY CRYOBANK
Seeks College-Educated Men 18-39 to Participate in a Six-Month Donor Program
Donors average \$150 per specimen.
Apply on-line
www.1230Donate.com

FOR SALE

Sell Textbooks

BOOKS Susannah simply wanted to marry a tall, dark, handsome, strong, rich man and live in a country estate. What could go wrong? Just about everything, in Clumsy Hearts, a slightly misguided romance by Hysteria Molt. Available via Amazon.com.

keep an eye out for the

super TUESDAY COUPONS

clip and save! every week

WONDERWORD

By DAVID OUELLET

HOW TO PLAY: All the words listed below appear in the puzzle — horizontally, vertically, diagonally, even backward. Find them and **CIRCLE THEIR LETTERS ONLY. DO NOT CIRCLE THE WORD.** The leftover letters spell the Wonderword.

CHIMING BELLS

Solution: 8 letters

O C H I M E E C N E U Q E S C
B R E E Z E U H U W N H B P R
T A N L S S A L G I U T A I L
U F E A T H E R S N P T R E Y
B T I O M C A E G D I O S R E
E E M G O E R N R O T R R I A
S D Y T B D N O D I C E P W R
S T S O I R H T S M H N M S N
T U R N L C O I D C A E P I P
R N N I E L V N O E L D A Z C
A E D T N H A L Z O T R E E O
R D U O L G L T D E O A M N P
T S A L O E E Y E O Y G O S P
D A E L C W C O D E S T H C E
B U T T O N H O U S E E C A R

© 2013 Universal Uclick www.wonderword.com Join us on Facebook 1/31

Alloy, Arts, Bars, Breeze, Bronze, Button, Cherry, Chime, Chord, Coated, Code, Collect, Copper, Crafted, Custom, Dinner, Door, Feathers, Garden, Gift, Glass, Goal, Handmade, Home, House, Hung, Last, Late, Lead, Loud, Melody, Mobile, Note, Ornament, Patio, Pipe, Pitch, Race, Rain, Resin, Rust, Sequence, Size, Spring, String, Tail, Toll, Toys, Tubes, Tuned, Visitor, Wind, Wire, Wood, Year
Yesterday's Answer: Nutrients

THE COLLECTED WONDERWORD, Volume 34 is "Celebrities Vol. 3," featuring some of the biggest names in entertainment. To order, send \$6.95 each plus \$3 postage and handling for the first book order (\$9.95 total, US funds only; Canadian orders add \$2.00 additional postage), and \$1 p&h for each additional book, to Universal Uclick, Attn: Wonderword, 1130 Walnut St., Kansas City, MO 64106 or call toll-free, 1-800-642-6490. Order online at upuzzles.com. (Contains 43 puzzles, 9 of which are the 20 x 20 size.)

WATCH FOR TEXAN FIRST PITCH FEB. 5
pre-season baseball coverage

SEE WHAT OUR **ONLINE SYSTEM** has to offer, and place **YOUR AD NOW!**
DAILYTEXANCLASSIFIEDS.COM

REMEMBER! You saw it in the Texan

recycle recycle recycle recycle
recycle recycle recycle recycle
recycle recycle recycle recycle
recycle recycle recycle recycle
recycle recycle recycle recycle
recycle recycle recycle recycle

SEE WHAT OUR **ONLINE SYSTEM** has to offer, and place **YOUR AD NOW!**
DailyTexanClassifieds.com



Tsvangirayi Mukwazhi | Associated Press

Amalinda Ndlovu shows her catch while harvesting mopane worms in Gwanda, Zimbabwe. In Zimbabwe as well as most parts of southern Africa, mopane worms are a staple part of the diet in rural areas and are considered a delicacy in the cities. They can be eaten dry, as crunchy as potato chips, or cooked and drenched in sauce.

Worms prized as delicacy in Africa

By Tsvangirayi Mukwazhi
Associated Press

GWANDA, Zimbabwe — In Zimbabwe, mopane worms are a staple part of the diet in rural areas and are considered a delicacy in the cities. They can be eaten dry, as crunchy as potato chips, or cooked and drenched in sauce. The worms can be mighty tasty and they're very nutritious. Here's the scoop on mopane worms.

THE HARVEST

After six weeks of rain, the mopane worms cling to mopane trees in rural Gwanda, an arid cattle-ranching area in southern Zimbabwe. Amanda Ncube normally fetches firewood to sell and looks after the family cattle, but when it's worm-harvesting season she joins other women and a few men in collecting the worms and piling them into buckets. The worms are as long as a hand and as thick as a cigar. Ncube carefully plucks them from the lower branches before climbing partway up the tree to shake off the higher worms. As they harvest the worms, the women and men move from one tree to another until their buckets are full. During harvest season, the porches of mud-walled homes are covered with thousands of worms, laid out to dry in the hot sun.

HIGH PROTEIN

The mopane worm is a healthful and cheap source of nutrition.

A Zimbabwean nutritionist, Marlon Chidemo, says the worms are high in healthy nutrients and contain three times the amount of protein as beef. He says eating worms is less taxing on the environment than consuming beef because it takes far fewer leaves to produce worms than it does feed to produce the same amount of beef.

WORMY BUSINESS

Dried mopane worms have become a multimillion-dollar industry, even exported to countries like South Africa and Botswana. They can be found in African restaurants in Paris.

PREPARATION

Once they've been dried out, they can be eaten straight away. They can also be cooked in a spicy or peanut butter sauce and served with pap, a maize porridge.

Having grown up eating the mopane worms, The worm can be a pleasure to eat as a starter or a side dish. The taste is reminiscent of salty potato chips.

WRITE

continues from page 10

school. He said he loves Mike McGee for his charisma on stage and Cristin O'Keefe Aptowicz for her purely brilliant and vulnerable writing.

Aptowicz lives in Austin and helped Brown with the store from day one. She moved to Texas in 2011 after 12 years as a leader in New York City's slam poetry scene and a stint as writer-in-residence at the University of Pennsylvania.

"We're a young, friendly, engaging town," Aptowicz said. "That energy of wanting to engage is represented in the arts scene here, and Write Bloody is a beneficiary in that people are willing to give us a try and they come back and support us."

She sits on the floor of the Write Bloody store, which isn't much bigger than the average West Campus apartment living room, and speaks highly of the gray in her hair. Brown, her friend of 15 years, affectionately calls her "Crispy." The close connection between the poets on the press is crucial to its success — when one poet sells well, it is good for

everyone, Brown said.

The store doubles as his office, where Brown almost single-handedly runs the publishing company. He collaborates with artists to produce beautiful cover designs that draw people into the books. In his 40 years, Brown has worked as a paratrooper in the 82nd Airborne, a musician, a magician, a weatherman, a wedding officiant and a winery dirt shoveler. But, he says, "nothing has shaped me more than where poetry has taken me," and he loves running a business that helps other writers launch and grow their poetry careers.

The best part is "when UPS brings a brand new box of books that no one has ever touched, and I get to cut it open, and I'm filled with the joy of holding it and smelling it and the strange fear of looking for misspellings. It's like going to bed with someone for the first time, and you're excited but then you're also like 'What if they don't like my butt?'"

Helping new people enjoy poetry sweetens the deal further, he said. Daniel Lisi is a junior at California State University, Long Beach and works for the company as a manager. He said since reading Write Bloody poetry for

THE GREATNESS

What: Poetry, comedy and improv performers compete in a game show hosted by Derrick Brown
Where: The North Door
When: Thursday at 8 p.m.
Cost: \$5

the first time three years ago, he has incorporated poetry and literature promotion into his career goals.

"If we can get more people to sit down and write about what they're going through and convey that to other people, that would build such an important and gorgeous connection with people that I feel is lacking so substantially today," Lisi said.

Soon, everyone in Austin will have poetry on the brain if Brown has anything to do with it. The press will put out 12 books this year. Brown is organizing regular events and readings to bring together poetry lovers and those who could be.

"People are only used to the poetry they were exposed to in school," Brown said. "I feel like it's the '50s and people have only heard jazz and the minute they hear some rock 'n' roll they're going to love it. We just need to let them hear it."

COW

continues from page 10

actually starting earlier?

While there's not a definite answer — due to a combination of the difficulty in collecting accurate data as well as defining what marks the beginning of puberty — it does look like children, particularly girls, are maturing earlier than they have in the past.

However, this trend began long before the introduction of rBGH, which was approved for use by the Food and Drug Administration (FDA) in 1993. Records dating back to the late 1800s show a gradual decline in the age that girls, on average, had their first periods. This age fell from around 17 in 1890 to about 13 in the '50s. Over the past 25 years, it's still decreased enough to detect, but by no more than 4 months or so.

However, the age of another indicator of puberty, the onset of breast development, has decreased by a substantial

amount, perhaps as much as a year over the past two decades. Again, partially due to the inherent difficulty in determining a definite starting point, the significance of this data is uncertain.

Returning to the rBGH: If the earlier onset of puberty is a genuine phenomenon, could the artificial hormones we're injecting into cows somehow end up in our milk and explain at least part of this effect?

Almost certainly not. Our digestion process is very good at breaking up proteins, such as rBGH. Laboratory studies have shown that feeding mice excessive doses of the hormone (50 times the amount used during injection) has no effect on them other than an antibody response, which is neither harmful nor an uncommon reaction to other food proteins. Additionally, getting this response required a much higher daily intake of the hormone than even the most devoted dairy enthusiasts among us consume.

The FDA has approved the use of rBGH, although a Google search is chock full

of poorly designed webpages devoted to health problems that the hormone may cause, the scientific consensus is that there's no significant difference between milk from cows treated with rBGH and milk from untreated cows.

As for what actually is causing the early puberty, there aren't any compelling explanations at this point. The recent increase in obesity may be partially to blame, though probably not entirely, since early onset remains even after controlling for body mass index (BMI). Exposure to chemicals in the environment (specifically bisphenol-A, or BPA, the building block of plastics) may also explain the data, but these conclusions are also controversial and potentially premature. To add to the confusion, there's also a racial component: Black girls begin puberty significantly earlier than their Hispanic peers who, in turn, begin earlier than white girls.

But, whatever the cause, rest assured, it's not the milk. Your precious bodily fluids are well-protected.

SHAKES

continues from page 10

writing modern pop songs, the production style and the sounds we're achieving are what make it more of an homage to '60s music," Glosup said.

A quick listen to "Stay Young" instantly evokes the warmest visions of wasting away an afternoon in your friend's backyard. This special retro-tinged, upbeat brand of music sets the band apart from the typical pop band.

"I think Will's lyrics play into it a lot," Penner said. "They try not to be too

generic. It's very straightforward what he's singing about."

Indeed Glosup's lyrical delivery keeps the music grounded in the present, complete with complaints about minimum wage and hangers that sound exactly like your best friend filling you in on last night.

"We're not like revivalists," Hadden said. "It's not like a revivalist band that you're supposed to hear and go, 'Oh, is this some band from the '60s I don't know about?' You should know it's from right now."

It's easy to hear the influence from both '60s and early '90s indie pop music in Shivery Shakes' dreamy background "oohs" and "ahs"

over sunny surf-rock guitars, but an element of modernity in the band's songwriting remains at the forefront of its sound.

"I think we're taking the straight ahead approach of making modern pop music that maybe draws some from the past, but I think that's always kind of just been like the modern youth experience and what it's like living today," Glosup said. "That's what all the songs are about. What it's like kind of being young today. Trials and tribulations and maybe some fun stuff too."

Shivery Shakes plays Saturday night at Hotel Vegas for the Growl EP release show.

\$18 STUDENT RUSH TICKETS

With valid I.D. at the door, one hour before show time.

"...a fascinating historical mystery!" — *Variety*

Regional Premiere with TV and film star **Beth Broderick** (TV's *Sabrina, the Teenage Witch*) and world-renowned pianist **Anton Nel** (U.T. Professor of Piano and Chamber Music)

3 WEEKS ONLY!
ZACH's new Topfer Theatre

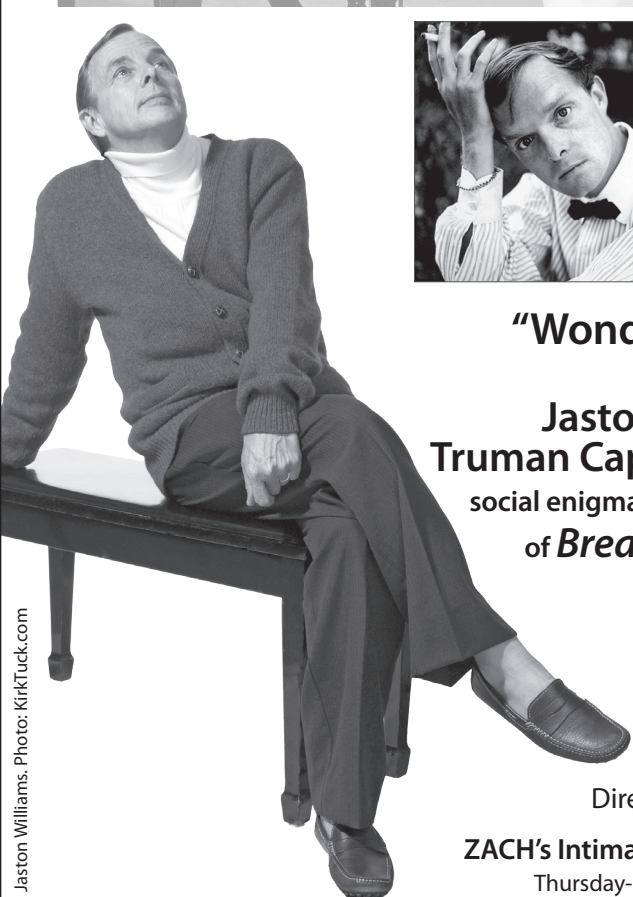
Wednesday-Saturday at 8 • Sunday at 2:30
Contains brief nudity.



Beth Broderick and Anton Nel. Photo: KirkTuck.com

33 Variations

By Moisés Kaufman • Directed by Dave Steakley



"Wonderfully comic!"
— *AustinLiveTheatre.com*

Jaston Williams stars as **Truman Capote**, the flamboyant social enigma and legendary author of *Breakfast at Tiffany's* and *In Cold Blood*

TRU

By Jay Presson Allen
Directed by Larry Randolph

ZACH's Intimate Whisenhunt Theatre
Thursday-Saturday at 8 • Sunday at 2:30

512-476-0541 x1

ZACH
THEATRE

zachtheatre.org

BUTLER COMMUNITY SCHOOL

FREE Drop-in Class



Try a **FREE Drop-in Class** with promo code: **Texan**

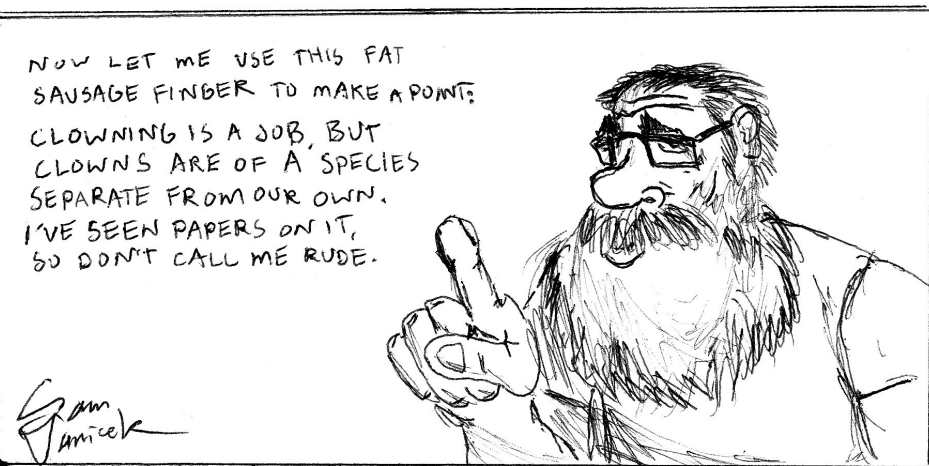
Promo code "Texan" may be redeemed for one FREE dance or fitness class. Offer expires 3/24/2013.

DANCE & FITNESS FOR EVERYONE

- Ballet
- Bollywood
- Contemporary
- Hip Hop
- Jazz
- Modern
- Theatre Dance
- Samba/Brazilian
- West African Dance
- Videodance™
- And More!

Open seven days per week.
Visit balletaustin.org/community
Call 512.476.9051 ~ 501 West 3rd Street

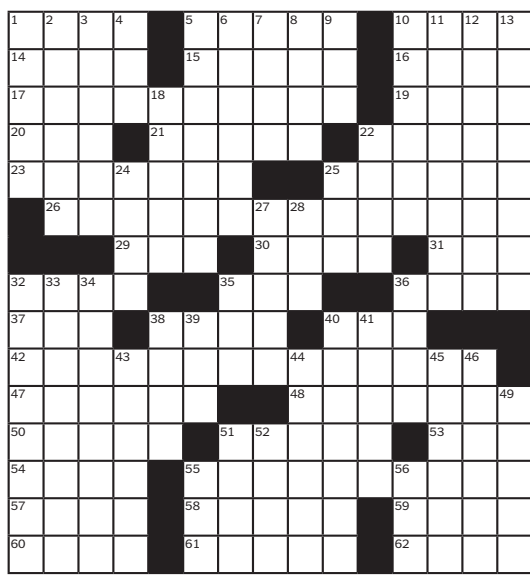
BALLET
Austin



The New York Times Crossword

Edited by Will Shortz No. 1227

- ACROSS**
- 1 One of the folks
 - 5 Bit the bullet, say
 - 10 French ___
 - 14 Shoveler's target
 - 15 XC60, XC70 or XC90
 - 16 "The Hurt Locker" setting
 - 17 SON
 - 19 Junior of the N.F.L.
 - 20 U.S./Canadian sporting grp. since 1936
 - 21 Rear-___
 - 22 To love, to Livy
 - 23 Output from an old printer
 - 25 2001 French film nominated for five Academy Awards
 - 26 TIN
 - 29 Latin abbr. meaning "he speaks"
 - 30 Bust
 - 31 #26 of 26
- DOWN**
- 32 Subject of four Sports Illustrated covers between 1966 and 1993
 - 35 Chicken ___
 - 36 Rare goose
 - 37 Balneotherapy locale
 - 38 Tito's surname
 - 40 Rapper behind the 2012 "Gangnam Style" YouTube sensation
 - 42 LIP
 - 47 "That's it for me"
 - 48 Stone Age artifact
 - 50 Oenophile's installation
 - 51 "Hell, yeah!"
 - 53 Transportation Dept. agency
 - 54 An emollient
 - 55 FIN
 - 57 Of two minds
 - 58 ___ Systems (computer networking company)



- DOWN**
- 1 "Fie!"
 - 2 How some balls are fielded
 - 3 Hoi ___
 - 4 Personal ad abbr.
 - 5 Hit Broadway musical with the song "I'm Not Wearing Underwear Today"
 - 6 Shared with, as a story
 - 7 If not
 - 8 "The Dancing Years" composer
 - 9 Heap
 - 10 What's in the stars
 - 11 "It's clear to me ..."
 - 12 Designer of the Tulip chair
 - 13 Tool with a blade
 - 18 Clark Bar company
 - 22 In
 - 24 Edit out
 - 25 Male name that spells another male name backward
 - 27 Was paralyzed with fear, say
 - 28 Ski shop supply
 - 32 Say "hey," say
 - 33 Tony winner after 5-Down
 - 34 Dedicated

- ACROSS**
- 35 Professional runner
 - 36 Org. in 1997's "Cop Land"
 - 38 Mail room sights
 - 39 Singer Carly ___ Jepsen
 - 40 Represent, in sports
 - 41 Area of decades-long conflict
 - 43 Some board game equipment
 - 44 Prime
 - 45 Theodore Roosevelt was on one in 1909
 - 46 Friend no more
 - 49 Course with no homework, say
 - 51 Hippie celebration
 - 52 City west of Novosibirsk
 - 55 College dept.
 - 56 Japanese drama

Puzzle by JULIAN LIM
 For answers, call 1-900-285-5656, \$1.49 a minute; or, with a credit card, 1-800-814-5554.
 Annual subscriptions are available for the best of Sunday crosswords from the last 50 years: 1-888-7-ACROSS.
 AT&T users: Text NYTX to 386 to download puzzles, or visit nytimes.com/mobilexword for more information.
 Online subscriptions: Today's puzzle and more than 2,000 past puzzles. nytimes.com/crosswords (\$39.95 a year).
 Share tips: nytimes.com/wordplay.
 Crosswords for young solvers: nytimes.com/learning/xwords.

		2		6					
7	1								
6		9	3	7	2				8
9	5				8				6
		3					8		
8				9				3	7
3			8	4	5	7			1
								8	5
							2		6

Today's solution will appear here tomorrow

8	5	7	4	1	9	2	6	3	
2	4	9	6	3	8	7	1	5	
1	6	3	7	2	5	8	9	4	
3	1	2	9	8	4	6	5	7	
4	9	6	5	7	3	1	2	8	
7	8	5	1	6	2	4	3	9	
9	3	8	2	4	1	5	7	6	
6	2	4	3	5	7	9	8	1	
5	7	1	8	9	6	3	4	2	

S
U
D
D
O
O
K
U
F
O
R
Y
O
U

ART



Pearce Murphy | Daily Texan Staff

Derrick Brown, former paratrooper for the 82nd Airborne, decided to open Write Bloody publishing house in 2012 as a physical extension of his publishing company. For Brown, the store represents an opportunity to spread his passion for poetry to others throughout the Austin community.

Write Bloody keeps poetry fresh

By Audrey White

Derrick Brown found poetry in a foxhole at the Fort Bragg, N.C. Army base 20 years ago. He hopes you'll follow suit at his new store, Write Bloody.

The shop features the work of the poetry publishing company by the same name. Brown launched Write Bloody in 2004 so he could publish his

own books after the presses he used folded. The press now features dozens of poets, including internationally beloved authors like Andrea Gibson, Taylor Mali, Anis Mojgani and Buddy Wakefield.

Brown relocated from Long Beach, Calif., to Austin last May and opened his store on Cesar Chavez Street next door to Mexican restaurant Juan In A Million on Dec. 2, 2012.

"It's a grand experiment for a year to see if a press can open a physical store and survive," Brown said. "I don't have anyone to call up and ask for help because no one has done anything like this."

Write Bloody books are also available online and in stores around the country.

For some people, poetry conjures up vague, ugly memories of dissecting meter in high school English

class. But Write Bloody poets are "packing theaters, bars and churches" with folks who want to hear honest, creative verse and powerful stories, Brown said. He requires all the poets he publishes to tour so that they can give live readings and sell their books.

Write Bloody poets pen on topics including hated ex-boyfriends, LGBTQ equality, education and hope. Walk into the store and tell Brown

what you want in a poem and he'll gladly direct you to a book that matches your style.

"I started talking to him and said, 'I don't know where to start,' and he pointed out three of his favorites," undeclared sophomore Gyles Sonier said. "The store is really close to a lot of students. I hope everyone goes and visits."

Sonier said he first learned about the store from his

WRITE BLOODY

Address: 2306 E Cesar Chavez St. #103
Hours: Wed. and Fri. 11 a.m. - 6 p.m., Sat. 10 - 4
Website: writebloody.com

coach on the UT speech team, but he's been reading Write Bloody poets since high

WRITE continues on page 8

MUSIC

Shivery Shakes rocks Austin

By Elizabeth Williams

Somewhere deep in the expanses of the Austin music scene, between the shaggy-haired garage rockers and the hushed voices of indie pop is a band whose sugary tales of youth are as swoon-inducing as its amps are joltingly loud. This band is Shivery Shakes.

Founded in 2011 by William Glosup, Shivery Shakes is best described as a mix between the jangly rock of '90s band Pavement and the oh-so-cool '60s pop feel of Roy Orbison.

"I feel like we occupy a unique space in that because if you went to a typical Austin indie pop band show, we

would be too loud and raucous for that, but if you go to a garage rock show we would be the most sweet sounding band there," drummer Marcus Haddon said. "It wouldn't sound rough at all."

Shivery Shakes is made up of Glosup on vocals and guitar, Haddon on drums, Andrew Penmer on bass and Ryan Hall on guitar.

Since the band's formation, Shivery Shakes released an EP in March 2012 and recently changed its lineup. The band is now gearing up to record a new 7" record. Like the first EP, the band has decided to record the 7" on analog tape rather than through a digital recording program.

"At the end you have a

GROWL'S GALLERY

What: EP release show
Where: Hotel Vegas
When: Saturday, doors at open 9 p.m.

physical artifact of your work," Hall said. "You actually have that reel. That's something more disparate from you and files on a computer."

The band feels its efforts to record through a process often hailed as outdated aids it in creating a more vintage sound.

"I'm really attached to recording analog, I think, because even though we're

SHAKES continues on page 8

SCIENCE & TECHNOLOGY

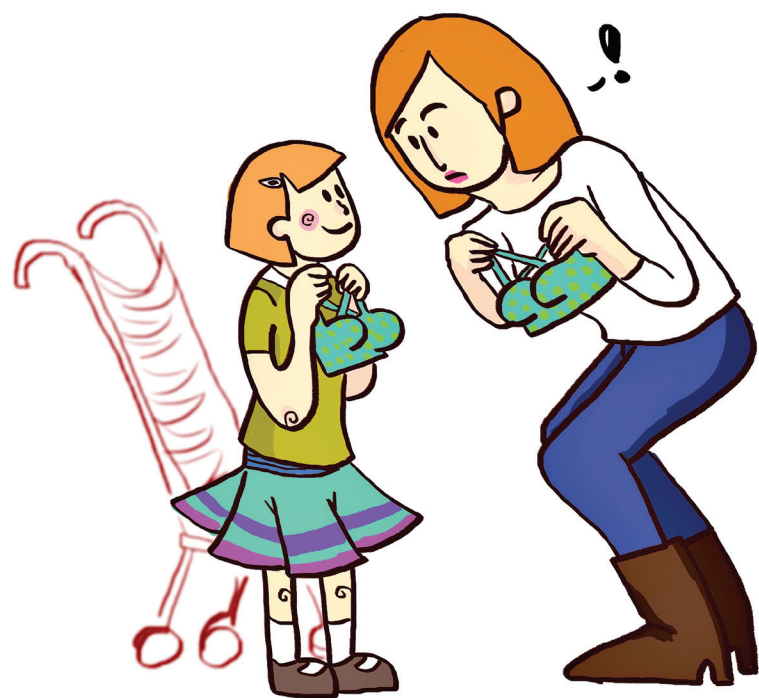


Illustration by Ploy Buraparate | Daily Texan Staff

Hormones in food may harm humans

SCIENCE SCENE

By Robert Starr

VIDEO: bit.ly/mightymilk

During the height of the Cold War, a conspiracy theory developed, with proponents insisting that the safety of our water supply was at risk. A fluoridation process, which the Soviets clearly devised, put everyone who ever drank water in danger of Communist brainwashing. As Stanley Kubrick's "Dr. Strangelove," "We must protect our precious bodily fluids."

For the most part, nobody believes this anymore. However, there is a similar

concept that's more commonly accepted and, as far as the research shows, just as incorrect: Hormones injected into cows are poisoning our milk and causing children, specifically girls, to begin puberty at an earlier age.

The first part isn't absurd. Milk companies are, in fact, injecting hormones into cattle to increase production. And whatever the effect on humans, putting this recombinant bovine growth hormone (rBGH) into cattle may not be a great idea, at least from a moral standpoint.

While the hormone does result in a more economical

and efficient system to help us better enjoy our cereal in the morning, it comes at a cost. Cows injected with rBGH are at greater risk for infections as well as other health ailments. However, rBGH is just one of many questionable elements in our factory farming system that most would agree operates in an inhumane manner.

But enough about the cows, what about humans? Is rBGH causing a decrease in the age children begin puberty? Before we answer that, let's address a more basic question: Is puberty

COW continues on page 8



Chelsea Purgahn | Daily Texan Staff

Shivery Shakes is a local band whose sound combines a mix of '60s pop and '90s rock. Shivery Shakes is currently recording its new 7" record on analog tape to stay true to its vintage sound.