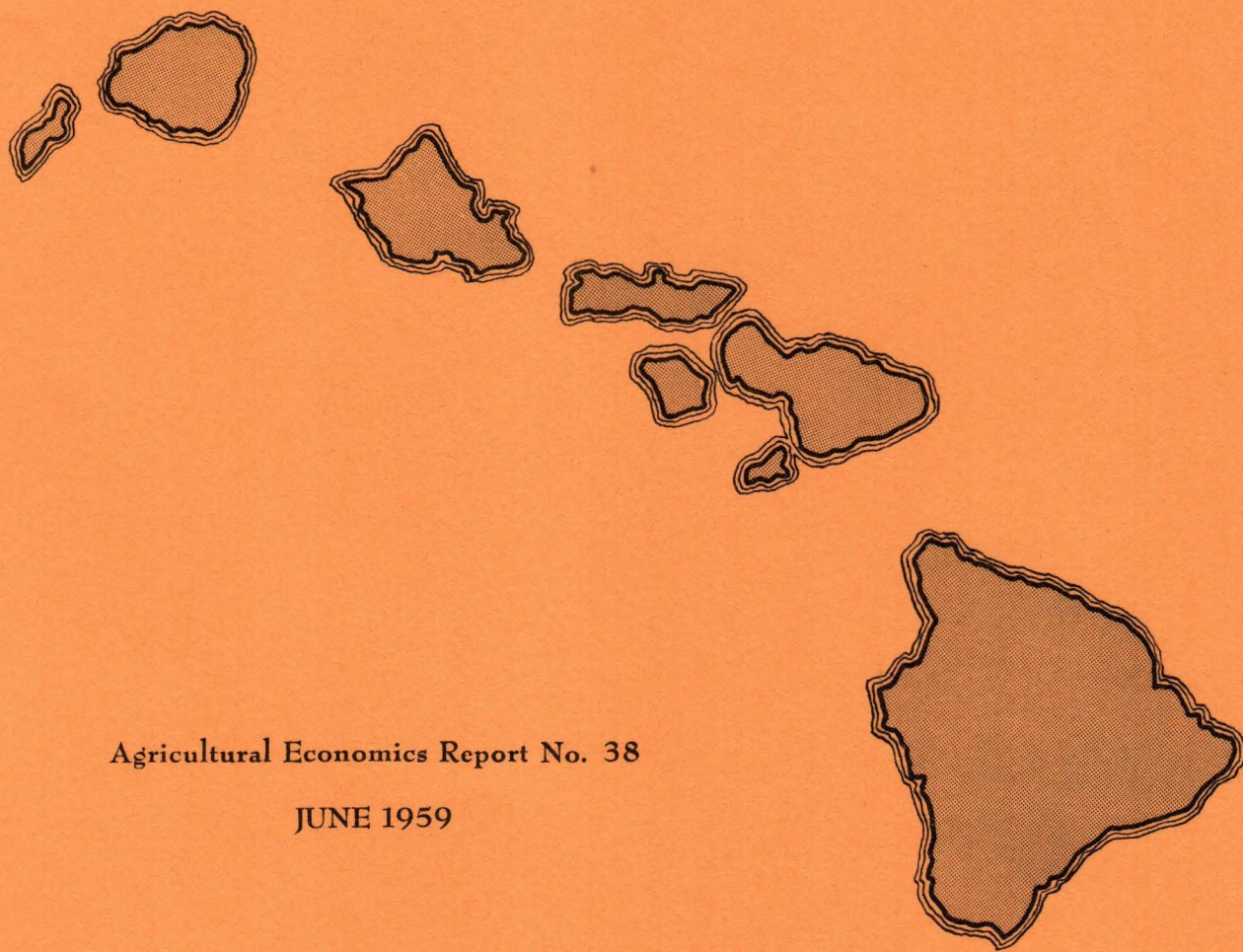


Statistics of
Hawaiian Agriculture
1958



Agricultural Economics Report No. 38

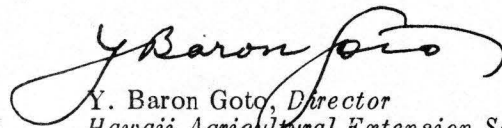
JUNE 1959

FOREWORD

This issue of *Statistics of Hawaiian Agriculture* continues the series of annual publications of basic agricultural data. Revised estimates of crop acreages and production and livestock numbers and production for 1958 originally published monthly in *Agricultural Production and Outlook* are presented herein. Data for earlier years are also presented for those who wish to study historical trends. In addition, this publication carries estimates of prices, and value of production of agricultural commodities. Receipts and shipments of many selected agricultural products are also included.

This publication would not have been possible without the cooperation of farmers, processors and handlers of agricultural products, and various private and government agencies who supplied information voluntarily on their operations. Their cooperation is greatly appreciated. Thanks are also due the staff of regular crop reporters and the county agents who collected much of the material used to compile the tables in this publication.

Hawaii farmers and all persons and agencies with an interest in agriculture need basic facts about agriculture to do an intelligent job of production and marketing and planning for a sound and long-time agricultural program. It is our hope that this publication will make a worthwhile contribution in this respect.



Y. Baron Goto, Director
Hawaii Agricultural Extension Service
University of Hawaii, College of Agriculture
Honolulu 14, Hawaii

STATISTICS OF HAWAIIAN AGRICULTURE

1958

Issued June 1959 by the
Hawaii Cooperative Crop and Livestock Reporting Service

Paul P. Wallrabenstein, Agricultural Statistician in Charge
Stephen M. Doue, Assistant Agricultural Economist
Rokuro Yamaguchi, Assistant Agricultural Economist
Ethel Nihei, Research Analyst

Cooperative Extension Work in
Agriculture and Home Economics

(Acts of May 8 and June 30, 1914)

Agricultural Extension Service, University of Hawaii
and United States Department of Agriculture Cooperating
Y. Baron Goto, Director

Cooperating with

United States Department of Agriculture
Agricultural Marketing Service
Agricultural Estimates
S. R. Newell, Director

CONTENTS

	Page
HAWAIIAN AGRICULTURE 1958	4
 <u>SECTION I--GENERAL SUMMARIES</u>	
Agricultural land utilization, 1949-58	6
Agricultural land utilization for diversified crops, by islands, 1958	6
Agricultural land utilization, 1949-58, index numbers	7
Number of commercial-size enterprises, 1949-58	7
Number of commercial-size enterprises, by islands, 1958	8
Value of agricultural marketings, 1949-58	9
Value of agricultural marketings, by islands, 1958	11
Volume of agricultural marketings, 1949-58	12
Volume of agricultural marketings, by islands, 1958	14
Territorial market supplies of selected agricultural products from all sources, 1949-58	15
Marketings, 1949-58, index numbers	17
Prices: Selected agricultural products, 1949-58, index numbers	20
Prices paid, prices received by U. S. farmers and U. S. wholesale prices of all commodities, 1949-58, index numbers	22
Purchasing power of selected agricultural products, 1949-58, index numbers	22
 <u>SECTION II--PRICES</u>	
Annual average prices: Selected agricultural products, Territory, 1949-58 and average 1947-49	23
Island vegetables, fruits, and miscellaneous crops: Annual average price per pound, by islands, 1958	25
Island vegetables and fruits: Honolulu wholesale price per pound, by months, 1958	26
Island livestock and poultry products: Annual average prices, by islands, 1958	27
Island beef: Monthly average Honolulu price per pound, dressed weight 1958	28
Island hogs: Monthly average Honolulu wholesale price per pound, live weight 1958	28
Poultry: Monthly average Honolulu wholesale price per pound, by origin and classes, 1958	29
Eggs: Monthly average Honolulu wholesale price per dozen, by origin, 1958	29
 <u>SECTION III--SHIPMENTS</u>	
Fresh vegetables and fruits: Inshipments, by destination, 1958, totals 1954-57	30
Frozen vegetables, fruits, and fruit juices: Inshipments from the U. S. Mainland, by destination, 1958, totals 1954-57	31
Peanuts, rice and soybeans: Inshipments from all sources, by destination, 1958, totals 1954-57	33
Peanuts, rice and soybeans: Inshipments from all sources, by months, 1958	33
Feed grains and feedstuffs: Inshipments from all sources, by destination, 1958, totals 1954-57	34
Feed grains and feedstuffs: Inshipments from all sources, by months, 1958	36
Feed grains and feedstuffs: Imports from foreign countries, by months, 1958	37

Livestock: Inshipments from all sources, by months, 1958, totals 1954-57..... 37

Hatching eggs and chicks: Inshipments from all sources, by months, 1954-58..... 38

Specified dairy and poultry products, and meats: Inshipments from all sources, by destination, 1958, totals 1954-57..... 39

Shipments of specified agricultural products to the U. S. Mainland, by months, 1954-58..... 40

SECTION IV--DIVERSIFIED CROPS

Vegetables and fruits: Production and marketings, 1949-58..... 43

Vegetables, fruits, and miscellaneous crops: Acreage, production and wholesale value of marketings, Territory, average 1952-56, annual 1957-58..... 44

Vegetables, fruits, and miscellaneous crops: Acreage, production and wholesale value of marketings, by islands, 1958..... 46

Vegetables, fruits, and taro: Production, by months, 1958..... 48

Vegetables, fruits, and miscellaneous crops: Acre-yields, average 1952-56 and annual 1957-58..... 49

SECTION V--LIVESTOCK

Beef cattle: Acreage grazed, number on ranches, slaughter, and carcass value, 1949-58..... 50

Beef cattle: Ranches and numbers, January 1, 1959 and slaughter and carcass value, by islands, 1958..... 50

Dairies: Number of cows, milk marketed, slaughter and value of products, 1949-58..... 51

Dairies: Milk marketed, slaughter and value of products, by islands, 1958..... 51

Dairies: Number of farms, by size, January 1, 1959 and average number of cows and daily milk production per cow, by islands, 1958..... 52

Hogs: Numbers, slaughter and live weight value, 1949-58..... 52

Hogs: Numbers, January 1, 1959 and slaughter and live weight value, by islands, 1958..... 53

Hogs: Number of farms, by size of herd, January 1, 1959 and farrowings, by islands, 1958..... 53

Chickens: Production, marketings and value of meat birds and eggs marketed, 1949-58..... 54

Chickens: Numbers on farms and annual rate of lay, 1949-58..... 54

Chickens: Number of farms, by size of flock, 1949-58..... 55

Chickens: Production, marketings and value of meat birds and eggs marketed, by islands, 1958..... 55

Chickens: Number of farms, by size of flock, by islands, January 1, 1959..... 56

Chickens: Number on farms January 1, 1959 and annual rate of lay, by islands, 1958..... 56

Honey and beeswax: Number of producers, colonies, production and value of products, 1949-58..... 57

Honey and beeswax: Number of producers, colonies, production and value of products, by islands, 1958..... 57

APPENDIX..... 58

HAWAIIAN AGRICULTURE 1958

The value of Hawaii's agricultural production in 1958 was \$276,000,000. This was \$22,000,000 less than in 1957. The sugar strike was responsible for a decrease of 41 million dollars in the value of the sugar crop. Increases in the value of the pineapple crop, diversified crops and livestock and livestock products partly offset the drop in value of sugar. The value of pineapple was up 14 million dollars, diversified crops 1.8 million dollars and livestock and livestock products 2.6 million dollars.

The value of non-plantation crops and livestock and livestock products would account for a larger share of the total value of agricultural marketings if values of sugar and pineapple were available on a comparable basis. At present, sugar and pineapple values are for a processed product while other crops and livestock values are computed for a raw material at either a farm or wholesale level.

Livestock and Livestock Products

All livestock and livestock products shared in the increased value of marketings except honey and beeswax. The greatest increase, amounting to 1.3 million dollars, was in beef cattle values. Marketings and prices were both up in 1958. There were increases of over a half million dollars in marketings from the dairy industry and from chickens and eggs. Prices for milk held steady but sales of milk were up. Higher egg sales and a 12 percent increase in prices were more than enough to offset a decrease in the value of chickens sold. The amount of chicken and prices were lower in 1958 than in 1957. Hog marketings in 1958 dropped a little from the previous year but higher prices more than compensated for the decrease in volume.

The dairy industry continued to lead in value of sales but beef cattle was a close second. The value of marketings of milk and dairy animals was 9.98 million dollars compared with 9.75 million dollars for beef cattle. Chicken and egg marketings were valued at 7.7 million dollars while hog marketings amounted to 3.8 million dollars.

Livestock on Oahu produced nearly 60 percent of value of total marketings with Hawaii second with about a fourth of the total. Oahu ranked first for the dairy industry with 87 percent of the total value, first for hogs with 80 percent and first for chickens and eggs with 65 percent. Hawaii was the leader in beef production with 56 percent of the total value of beef and was second in chickens and eggs with 17 percent of the value. Maui was second in beef sales and Kauai third in chicken and egg sales.

Diversified Crops

A total value of 15.2 million dollars for diversified crop sales in 1958 was up 1.8 million dollars from the previous year. The coffee crop accounted for 1.4 million dollars of the increase. A record large production resulted in the increase in value despite a considerable drop in prices. The value of marketings of vegetables was up slightly as a result of increased sales and slightly higher average price. Slightly higher average price and an increase in the volume of sales led to a small increase in the value of fruits sold. The amount of sales of macadamia nuts continued to increase and the value of sales was about a third more than the previous year.

The coffee crop was again the leader in value of sales with vegetables in second place. These two items accounted for 12.9 million dollars or 85 percent of the total value of crops. Fruit sales amounted to 1.5 million dollars.

The leader in the value of crop marketings was the island of Hawaii with a total of 9.6 million dollars. Much of this value came from the coffee crop. Oahu was the leader in value of vegetables and fruits. The value of vegetable marketings on Oahu was about twice that on either Hawaii or Maui. Oahu led Hawaii by a much smaller margin in the value of fruit sales. Maui was second in the value of sales of vegetables but barely exceeded the value for Hawaii.

Land in Crops and Agricultural Enterprises

Total land in crops at 313,000 acres in 1958 was down slightly from the high reached last year. The decrease was mostly accounted for by a decline in the acres in pineapple. The acreage of diversified crops was about the same in 1958 and 1957. Small decreases in acreages of vegetables and melons, rice and taro were about offset by increases in coffee and macadamia nut acreages.

The number of commercial-sized crop enterprises in the Territory in 1958 was down slightly from a year earlier. The number of commercial livestock enterprises also decreased. (The number of enterprises is not a count of farms since some farms have more than one enterprise). The number of agricultural enterprises continued to drop on Oahu. There were sizeable decreases in the number of vegetable and melon enterprises and in fruit. Hog and poultry farms continued to go out of business. On Hawaii and Kauai there were increases in the number of crop enterprises. Small decreases on Hawaii and Maui were reported for livestock enterprises.

Oahu led in the number of vegetable enterprises and fruit enterprises with nearly twice as many enterprises as Hawaii, which was second. Maui was slightly behind Hawaii in the number of vegetable enterprises but had about the same number of fruit enterprises. Hawaii led in beef cattle enterprises with about twice as many ranches as Maui, which was next in number. Oahu continued to lead in the number of dairy and hog enterprises by a large margin. Hawaii gained on Oahu in numbers of poultry enterprises but Oahu still had about a third more poultry enterprises.

Inshipments and Territorial Market Supplies

Territorial supplies of vegetables and melons in 1958 increased but the share accounted for by local production remained at 50 percent, the same as a year earlier. Inshipments of fresh fruit dropped in 1958 and territorial production was up. However, Mainland sources still accounted for a little over half the total supplies.

Territorial egg production continued to furnish an increased share of the total supply. In 1958 local production accounted for 80 percent of the total, compared with 57 percent 10 years earlier. Inshipments continued to drop while production here increased. Territorial produced beef accounted for 59 percent of the total supply in 1958, an increase from 56 percent in 1957. Inshipments dropped and local production was up. Territorial hog producers' share of total supplies of pork was down a little in 1958 as production declined and inshipments increased. Mainland sources furnished 63 percent of the total supply of chicken meat. Local production was the same as a year earlier while inshipments were up slightly.

Outshipments

A new high of about 14.5 million pounds of fresh pineapple were shipped out in 1958. Papaya shipments, however, were about the same as a year earlier. Shipments of flowers and other floral materials also remained about the same. Shipments of processed Territorial fruits dropped sharply in 1958 from 2.9 million pounds in 1957 to 1.9 million pounds. About half of the decline was in passion fruit products and a third in papaya products.

SECTION I GENERAL SUMMARIES

Table 1.--Agricultural land utilization, 1949-58 ^{1/}

Year	Sugar ^{2/}	Pineapples ^{3/}	Diversified crops ^{4/}							Total all crops	Grazing lands ^{5/}	Forest reserve ^{6/}
			Vegetables and melons	Fruits	Coffee	Macadamia nuts	Rice	Taro	Total			
	Acres	Acres	Acres	Acres	Acres	Acres	Acres	Acres	Acres	1,000 acres	1,000 acres	1,000 acres
1949	213,400	68,000	5,000	1,800	3,400	1,590	210	940	12,940	294	1,475	1,065
1950	220,400	70,700	5,340	1,990	3,400	1,960	190	870	13,750	305	1,430	1,210
1951	221,200	73,600	4,670	1,760	3,450	2,200	170	870	13,120	308	1,480	1,110
1952	222,000	73,500	4,680	1,780	3,500	2,350	160	830	13,300	309	1,485	1,065
1953	221,500	73,200	4,430	1,770	3,750	2,580	200	740	13,470	308	1,510	1,058
1954	220,100	73,200	4,230	1,820	5,010	2,720	200	610	14,590 ^{7/}	308	1,384	1,045
1955	218,800	76,700 ^{8/}	4,340	1,760	5,140	2,750	200	580	14,770 ^{7/}	310	1,044	1,200
1956	220,600	76,700 ^{8/}	4,270	2,000	5,760	2,930 ^{8/}	170	640	15,770 ^{8/}	313	1,022	1,200
1957	221,300	76,700 ^{8/}	3,990	2,160 ^{8/}	6,520 ^{8/}	2,950 ^{8/}	130	620	16,370 ^{8/}	314 ^{8/}	1,008	1,200
1958	221,700	74,800	3,740	2,160	6,790	3,060	90	590	16,430	313	1,019	1,200

^{1/} APPROXIMATE LAND AREA, TERRITORY: 4,099,840 ACRES, 1950 U.S. CENSUS OF AGRICULTURE. ^{2/} TOTAL CANE LAND AREA DURING YEAR. HAWAIIAN SUGAR PLANTERS' ASSOCIATION DATA. ^{3/} LAND AREA INCLUDING CROP AREA, CAMPSITES, ROADS, ETC., YEAR ENDING MAY 31. PINEAPPLE GROWERS ASSN. OF HAWAII DATA. ^{4/} VEGETABLES AND RICE: ACREAGE HARVESTED DURING YEAR. TREE FRUITS AND TARO: AVERAGE ACREAGE IN CROP DURING YEAR. COFFEE AND MACADAMIA NUTS: ACREAGE IN CROP ON DECEMBER 31. ^{5/} LAND USED FOR PASTURE OR GRAZING OF BEEF CATTLE AND SHEEP DURING YEAR. ^{6/} BOARD OF AGRICULTURE AND FORESTRY DATA. ^{7/} MOLOKAI NOT INCLUDED, ^{8/} REVISED.

Table 2.--Agricultural land utilization for diversified crops, by islands, 1958 ^{1/}

Island	Vegetables and fruits	Coffee	Macadamia nuts	Rice	Taro	Total
	Acres	Acres	Acres	Acres	Acres	Acres
Hawaii	1,886	6,789	2,512	---	155	11,342
Kauai	198	---	160	91	168	617
Maui	1,103	---	251	---	95	1,449
Molokai	62	---	2	---	8	72
Oahu	2,641	---	136	---	160	2,937
Total	5,890	6,789	3,061	91	586	16,417

^{1/} ACRES HARVESTED FOR VEGETABLES AND RICE; ACRES IN CROP ON DECEMBER 31 FOR COFFEE AND MACADAMIA NUTS; AVERAGE ACRES IN CROP DURING YEAR FOR FRUITS AND TARO.

Table 3.--Agricultural land utilization, 1949-58
Index numbers (1947-49 = 100)

Year	Sugar	Pineapples	Diversified crops	Total all crops	Range lands
1949	101	100	101	105	91
1950	105	104	107	109	89
1951	105	108	102	110	92
1952	105	108	103	110	92
1953	105	108	105	110	93
1954	105	108	113 1/	110	86
1955	104	113	115 1/	110	65
1956	105	113	123	111	63
1957	105	113	127	112	62
1958	105	110	128	111	63

1/ MOLOKAI NOT INCLUDED.

Table 4.--Number of commercial-size enterprises, 1949-58^{1/}

Year	Diversified crops						
	Vegetables and melons ^{2/}	Fruits ^{3/}	Coffee	Macadamia nuts	Rice	Taro	Total
	Number	Number	Number	Number	Number	Number	Number
1949	1,453	4/	703	70	59	314	2,599
1950	1,446	4/	700	84	58	304	2,592
1951	1,387	335	705	98	55	290	2,870
1952	1,301	408	706	98	53	280	2,846
1953	1,237	401	712	98	52	266	2,766
1954	1,242	657	906	112	52	259	3,228
1955	1,048	731	876	97	44	255	3,051
1956	826	983	994	134	25	247	3,209
1957	793	783	1,104	148	28	225	3,081
1958	780	754	1,113	152	14	229	3,042

Year	Livestock						
	Beef cattle	Dairy	Hogs	Sheep	Chickens	Honey	Total
	Number	Number	Number	Number	Number	Number	Number
1949	329	74	481	3	442	23	1,352
1950	343	75	518	3	429	22	1,390
1951	360	74	560	3	400	27	1,424
1952	405	75	588	3	378	27	1,476
1953	468	79	516	3	341	27	1,434
1954	440	85	419	3	335	27	1,309
1955	411	86	395	3	334	29	1,258
1956	386	89	358	4	306	27	1,170
1957	386	90	323	6	267	24	1,096
1958	375 ^{5/}	90	307	2	247	20	1,041

- 1/ FOR DEFINITION OF "DIVERSIFIED" AND "COMMERCIAL-SIZE," SEE APPENDIX, P. 58.
- 2/ MELONS INCLUDED WITH FRUITS, 1951-55.
- 3/ 1949-55 DATA DO NOT INCLUDE INDEPENDENT PINEAPPLE ENTERPRISES.
- 4/ INCLUDED WITH VEGETABLES AND MELONS.
- 5/ TOTAL FARMS REPORTING BEEF CATTLE NUMBERED 663.

Table 5.--Number of commercial-size enterprises, by islands, 1958 1/

Island	Diversified crops						
	Vegetables and melons	Fruits	Coffee	Macadamia nuts	Rice	Taro	Total
	<u>Number</u>	<u>Number</u>	<u>Number</u>	<u>Number</u>	<u>Number</u>	<u>Number</u>	<u>Number</u>
Hawaii	186	171	1,113	125	---	69	1,664
Kauai	72	81	---	15	14	46	228
Maui	155	169	---	8	---	49	381
Molokai	13	13	---	1	---	7	34
Oahu	354	320	---	3	---	58	735
Territory	780	754	1,113	152	14	229	3,042

Island	Livestock						
	Beef cattle	Dairy	Hogs	Sheep	Chickens	Honey	Total
	<u>Number</u>	<u>Number</u>	<u>Number</u>	<u>Number</u>	<u>Number</u>	<u>Number</u>	<u>Number</u>
Hawaii	187	16	36	1	85	4	329
Kauai/Niihau	46	6	31	1	26	2	112
Maui	93	5	48	---	22	9	177
Molokai/Lanai	12	2	14	---	3	1	32
Oahu	37	61	178	---	111	4	391
Territory	375 2/	90	307	2	247	20	1,041

1/ FOR DEFINITION OF "DIVERSIFIED" AND "COMMERCIAL-SIZE," SEE APPENDIX, P.58.
 2/ TOTAL FARMS REPORTING BEEF CATTLE NUMBERED 663.

Table 6.--Value of agricultural marketings, 1949-58

Year	All agricultural marketings					
	Sugar products ^{1/}	Processed pineapple products ^{2/}	Diversified crops	Livestock products	Diversified crops and livestock products	All agricultural products
	1,000 dollars	1,000 dollars	1,000 dollars	1,000 dollars	1,000 dollars	1,000 dollars
1947-49 avg.	113,421	79,000	8,427	8,340	12,760	140,726
1949	112,278	88,000	7,892	20,585	28,477	228,755
1950	123,900	97,000	7,805	20,451	28,256	249,156
1951	137,890	91,000	10,148	24,560	34,708	263,598
1952	140,370	92,000 ^{3/}	10,385	25,061	35,446	267,816 ^{3/}
1953	149,880	108,000	10,821	23,574	34,395	292,275
1954	141,000	103,000	11,952	24,702	36,654	280,654
1955	145,500	110,000	13,521	26,023	39,544	295,044
1956	148,000	117,000	12,765	27,282	40,047	305,047
1957	146,000	110,000	13,415	28,782 ^{3/}	42,197 ^{3/}	298,197 ^{3/}
1958	105,000	124,000	15,222	31,354	46,576	275,576

Year	Diversified crops						
	Vegetables and melons ^{4/}	Fruits ^{5/}	Coffee ^{6/}	Macadamia nuts (in shell) ^{7/}	Rice (milled) ^{2/}	Taro (for processing) ^{8/}	Total
	1,000 dollars	1,000 dollars	1,000 dollars	1,000 dollars	1,000 dollars	1,000 dollars	1,000 dollars
1947-49 avg.	4,678	113	1,713	117	156	649	8,427
1949	4,570	1,058	1,569	115	143	437	7,892
1950	4,328	924	1,793	128	108	524	7,805
1951	4,597	940	3,660	144	120	687	10,148
1952	4,582	1,125	3,900	165	93	520	10,385
1953	4,603	1,137	4,382	164	116	419	10,821
1954 ^{2/}	4,511	1,232	5,537	159	105	408	11,952
1955 ^{2/}	5,038	1,341	6,411	162	98	471	13,521
1956	5,158	1,334	5,480	189	77	527	12,765
1957	5,363	1,415	5,823	248	66	500	13,415
1958	5,624	1,474	7,243	339	53	489	15,222

CONTINUED

Table 6.--Value of agricultural marketings, 1949-58--Continued

Year	Livestock products					
	Beef ^{10/}	Dairy, meat and milk ^{11/}	Hogs ^{12/}	Chickens and eggs ^{13/}	Honey and beeswax ^{14/}	Total
	1,000 dollars	1,000 dollars	1,000 dollars	1,000 dollars	1,000 dollars	1,000 dollars
1947-49 avg.	6,875	6,209	3,228	3,767	79	20,158
1949	7,068	6,408	3,113	3,936	60	20,585
1950	7,221	6,832	3,003	3,328	67	20,451
1951	8,450	7,897	3,470	4,661	82	24,560
1952	8,067	7,917	3,951	5,067	59	25,061
1953	6,121	7,821	3,853	5,769	10	23,574
1954	6,965	7,790	3,980	5,930	37	24,702
1955	7,796	8,125	3,833	6,236	33	26,023
1956	7,734	9,067	3,628	6,815	38	27,282
1957	8,475	9,455	3,654	7,153 ^{2/}	45	28,782 ^{2/}
1958	9,750	9,981	3,836	7,748	39	31,354

1/ HAWAIIAN SUGAR PLANTERS' ASSOCIATION DATA; INCLUDES 96⁰ RAW SUGAR DELIVERED AT COAST REFINERY, MOLASSES, BAGASSE AND OTHER BY-PRODUCTS.

2/ BANK OF HAWAII DATA; CROP YEAR ENDING MAY 31; INCLUDES CANNED FRUIT, JUICE AND INDUSTRY BY-PRODUCTS SHIPPED OUT.

3/ REVISED.

4/ WHOLESale VALUE, ISLAND OF ORIGIN.

5/ PINEAPPLES FOR FRESH MARKET EXCLUDED.

6/ F.O.B. MILL; CROP YEAR ENDING JUNE 30.

7/ F.O.B. MILL.

8/ AT FARM.

9/ MOLOKAI NOT INCLUDED.

10/ SALES BY SLAUGHTERHOUSES.

11/ MEAT: SALES BY SLAUGHTERHOUSES; MILK: DELIVERED BOTTLING PLANT.

12/ DELIVERED SLAUGHTERHOUSE.

13/ BASED ON: WHOLESale PRICES, 1949-57; PRICES RECEIVED BY FARMERS, 1958.

14/ F.A.S. ISLAND PORT.

Table 7.--Value of agricultural marketings, by islands, 1958

Island	Diversified crops					Total
	Vegetables, melons and fruits ^{1/}	Coffee green ^{2/}	Macadamia nuts (in shell) ^{2/}	Rice, milled ^{2/}	Taro (for processing) ^{3/}	
	<u>1,000 dollars</u>	<u>1,000 dollars</u>	<u>1,000 dollars</u>	<u>1,000 dollars</u>	<u>1,000 dollars</u>	<u>1,000 dollars</u>
Hawaii.....	1,884	7,243	305	---	124	9,556
Kauai.....	459	---	14	53	199	725
Maui.....	1,295	---	1	---	72	1,368
Molokai.....	45	---	---	---	4	49
Oahu.....	3,415	---	19	---	90	3,524
Territory.....	7,098	7,243	339	53	489	15,222

Island	Livestock					Total
	Beef ^{4/}	Dairy, meat and milk ^{5/}	Hogs ^{6/}	Chickens and eggs ^{7/}	Honey and beeswax ^{8/}	
	<u>1,000 dollars</u>	<u>1,000 dollars</u>	<u>1,000 dollars</u>	<u>1,000 dollars</u>	<u>1,000 dollars</u>	<u>1,000 dollars</u>
Hawaii.....	5,457	489	332	1,335	15	7,628
Kauai/Niihau.....	930	351	169	872	6 ^{2/}	2,328 ^{10/}
Maui.....	1,664	459	226	527	12	2,888
Molokai/Lanai.....	203	22	40	12	11 ^{1/}	277 ^{12/}
Oahu.....	1,496	8,660	3,069	5,002	6	18,233
Territory.....	9,750	9,981	3,836	7,748	39	31,354

- 1/ WHOLESALE, ISLAND OF ORIGIN; PINEAPPLES FOR FRESH MARKET EXCLUDED.
- 2/ F.O.B. MILL.
- 3/ AT FARM.
- 4/ SALES BY SLAUGHTERHOUSES.
- 5/ MEAT: SALES BY SLAUGHTERHOUSES; MILK, DELIVERED BOTTLING PLANT.
- 6/ DELIVERED SLAUGHTERHOUSE.
- 7/ BASED ON PRICES RECEIVED BY FARMERS.
- 8/ F.A.S. ISLAND PORT.
- 9/ DATA COMBINED WITH MOLOKAI TO AVOID DISCLOSURE OF INDIVIDUAL OPERATIONS.
- 10/ VALUE OF HONEY AND BEESWAX FOR MOLOKAI INCLUDED.
- 11/ DATA INCLUDED WITH KAUAI/NIIHAU.
- 12/ VALUE OF HONEY AND BEESWAX OMITTED.

Table 8.--Volume of agricultural marketings, 1949-58

Year	Crops					Total vegetables, melons and fruits
	Sugar, raw 960 ^{1/}	Pineapples 2/		Vegetables and melons 3/	Fruits 3/ 4/	
		Processed fruit	Juice			
		1,000	1,000	1,000	1,000	1,000
	<u>Tons</u>	<u>cases</u>	<u>cases</u>	<u>pounds</u>	<u>pounds</u>	<u>pounds</u>
1947-49 avg.	887,728	11,778	9,305	47,025	16,202	63,227
1949	955,890	13,697	10,817 ^{5/}	46,285	13,650	59,935
1950	960,961	14,073 ^{5/}	11,111 ^{5/}	45,714	13,745	59,459
1951	995,759	15,098 ^{5/}	12,354 ^{5/}	44,119	13,365	57,484
1952	1,020,450 ^{5/}	14,690	10,197 ^{5/}	47,080	15,700	62,780
1953	1,099,316	16,915	12,561	46,700	18,065	64,765
1954	1,077,347	16,581	12,830	45,475	18,570	64,045
1955	1,140,112	16,399	13,014	50,623	17,695	68,318
1956	1,099,543	18,613 ^{5/}	12,224 ^{5/}	46,525	19,010	65,535
1957	1,084,646	17,992	12,795	47,733	23,075	70,808
1958	764,953	16,798	10,472	49,270	23,532	72,802

Year	Crops--Continued			
	Coffee, green ^{6/}	Macadamia nuts (in shell) 3/	Rice (milled)	Taro (for processing)
	1,000 <u>pounds</u>	1,000 <u>pounds</u>	1,000 <u>pounds</u>	1,000 <u>pounds</u>
1947-49 avg.	6,597	687	723	13,570
1949	5,900	680	725	13,900
1950	4,300	755	710	11,740
1951	7,500	850	745	11,830
1952	7,700	965	580	11,640
1953	8,230	970	685	11,120
1954	8,264	930	615	10,575
1955	9,940	903	560	9,360
1956	8,698	1,025	480	10,345
1957	8,809	1,329	410	10,285
1958	14,497	1,832	327	9,565

Year	Livestock							
	Beef	Dairy		Hogs	Chickens ^{8/}		Bee products	
	Slaughter ^{7/}	Slaughter ^{7/}	Milk	Slaughter	Slaughter	Eggs	Honey (extracted)	Beeswax
	<u>Number</u>	<u>Number</u>	<u>1,000 quarts</u>	<u>Number</u>	<u>1,000 birds</u>	<u>Cases</u>	<u>1,000 pounds</u>	<u>1,000 pounds</u>
1947-49 avg.	33,860	5,140	31,769	43,500	367	99,200	749	13
1949	33,640	4,430	31,735	44,300	441	103,000	738	12
1950	29,470	3,390	35,624	53,400	545	120,370	795	17
1951	33,400	3,070	38,436	60,200	740	131,170	888	13
1952	33,650	2,620	37,242	66,900	793	158,400	584	7
1953	30,030	1,770	40,242	78,700	807	174,800	68	6
1954	34,350	2,030	40,505	76,400	924	194,600	332	7
1955	36,430	2,170	41,922	70,250	1,003	213,500	262	8
1956	38,030	2,810	46,788	73,000	1,044	256,800	307	6
1957	39,730	3,230	50,667	74,030	1,177	288,950	377	8
1958	43,260	3,670	52,841	73,390	1,213	299,160	352	6

- 1/ HAWAIIAN SUGAR PLANTERS' ASSOCIATION DATA.
- 2/ PINEAPPLE GROWERS ASSOCIATION DATA; CROP YEAR ENDING MAY 31.
- 3/ EXCLUDES QUANTITIES NOT HARVESTED BECAUSE OF MARKET CONDITIONS.
- 4/ EXCLUDES PINEAPPLES FOR FRESH MARKET.
- 5/ REVISED.
- 6/ CROP YEAR ENDING JUNE 30.
- 7/ CATTLE AND CALVES.
- 8/ EXCLUDES QUANTITIES CONSUMED AT HOME OR OTHERWISE NOT MARKETED.

Table 9.--Volume of agricultural marketings, by islands, 1958

Island	Diversified crops ^{1/}				
	Vegetables, melons and fruits ^{2/}	Coffee, green	Macadamia nuts (in shell)	Rice, milled	Taro (for processing)
	<u>1,000 pounds</u>	<u>1,000 pounds</u>	<u>1,000 pounds</u>	<u>1,000 pounds</u>	<u>1,000 pounds</u>
Hawaii	23,335	14,497	1,641	---	2,060
Kauai	3,158	---	81	327	3,750
Mau i	14,887	---	7	---	1,590
Molokai	462	---	---	---	80
Oahu	30,960	---	103	---	2,085
Territory	72,802	14,497	1,832	327	9,565

Island	Livestock						
	Beef cattle, slaughter ^{3/}	Dairy		Hogs, slaughter	Chickens		Honey
		Cattle, slaughter ^{3/}	Milk		Meat	Eggs	
	<u>Number</u>	<u>Number</u>	<u>1,000 quarts</u>	<u>Number</u>	<u>1,000 birds</u>	<u>30-doz. cases</u>	<u>1,000 pounds</u>
Hawaii	23,510	270	2,558	7,230	137	60,190	104
Kauai/Niihau	4,190	140	1,731	3,450	112	33,800	72 ^{4/}
Mau i	7,440	260	2,241	4,760	56	21,490	135
Molokai/Lanai	950	10	116	690	2	340	5/
Oahu	7,170	2,990	46,195	57,260	906	183,340	41
Territory	43,260	3,670	52,841	73,390	1,213	299,160	352

1/ EXCLUDES QUANTITIES NOT HARVESTED BECAUSE OF MARKET CONDITIONS.
 2/ EXCLUDES PINEAPPLES FOR FRESH MARKET.
 3/ INCLUDING CALVES.
 4/ DATA COMBINED WITH MOLOKAI TO AVOID DISCLOSURE OF INDIVIDUAL OPERATIONS.
 5/ INCLUDED WITH KAUAI/NIIHAU.

Table 10.--Territorial market supplies of selected agricultural products from all sources,
average 1947-49, annual 1949-58

Year	Fresh vegetables and fruits ^{1/}								
	Vegetables and melons			Fruits			Total vegetables and fruits		
	Inshipments	Hawaii	Total	Inshipments	Hawaii	Total	Inshipments	Hawaii	Total
	Million pounds	Million pounds	Million pounds	Million pounds	Million pounds	Million pounds	Million pounds	Million pounds	Million pounds
1947-49 avg.	37.7	47.0	84.7	26.4	16.2	42.6	64.1	63.2	127.3
1949	29.8	46.3	76.1	21.6	13.6	35.2	51.4	59.9	111.3
1950	35.9	45.7	81.6	26.5	13.4	39.9	62.4	59.1	121.5
1951	41.6	44.1	85.7	29.9	13.1	43.0	71.5	57.2	128.7
1952	32.7	47.1	79.9	23.8	15.3	39.1	56.5	62.4	118.9
1953	39.6	46.7	86.3	26.3	17.3	43.6	65.9	64.0	129.9
1954	43.2	45.5	88.7	27.6	16.7	44.3	70.8	62.2	133.0
1955	39.8	50.2	90.0	25.7	16.7	42.4	65.5	66.9	132.4
1956	48.0	46.1	94.1	28.2	17.4	45.6	76.2	63.5	139.7
1957	47.6	47.3	94.9	26.9	20.6	47.5	74.5	67.9	142.4
1958	49.3	49.3	98.6	25.6	23.5	49.1	74.9	72.8	147.7
1954-58 avg.	<u>Percent</u> 49	<u>Percent</u> 51		<u>Percent</u> 59	<u>Percent</u> 41		<u>Percent</u> 52	<u>Percent</u> 48	

Year	Fresh and frozen meats							
	Beef and veal ^{2/}			Pork ^{3/}			Lamb and mutton ^{5/}	Total supply, all red meats
	Inshipments	Hawaii	Total	Inshipments ^{4/}	Hawaii	Total	Inshipments	
	Million pounds	Million pounds	Million pounds	Million pounds	Million pounds	Million pounds	Million pounds	Million pounds
1947-49 avg.	7.8	17.9	25.7	5.2	5.8	11.0	0.6	37.3
1949	7.8	17.5	25.3	5.2	5.6	10.8	0.6	36.7
1950	7.7	15.6	23.3	6.6	6.7	13.3	0.7	37.3
1951	5.2	17.9	23.1	6.1	7.1	13.2	0.7	37.0
1952	7.5	18.3	25.8	5.9	8.3	14.2	0.8	40.8
1953	13.4	14.9	28.3	5.0	9.9	14.9	0.9	44.1
1954	15.1	17.9	33.0	5.6	9.3	14.9	1.1	49.0
1955	15.4	20.4	35.8	6.6	8.6	15.2	0.9	51.9
1956	17.6	21.4	39.0	7.7	9.3	17.0	1.1	57.1
1957	18.0	22.8	40.8	6.8	9.0	15.8	1.1	57.7
1958	16.5	24.0	40.5	6.9	8.7	15.6	1.2	57.3
1954-58 avg.	<u>Percent</u> 44	<u>Percent</u> 56		<u>Percent</u> 43	<u>Percent</u> 57			

CONTINUED

Table 10.--Territorial market supplies of selected agricultural products from all sources, average 1947-49, annual 1949-58--Continued

Year	Fresh milk and poultry products									
	Milk	Chickens ^{6/}			Turkeys ^{6/}		Total	Eggs		
	Hawaii	Inshipments	Hawaii	Total	Inshipments	Poultry meat	Inshipments	Hawaii	Total	
	Million quarts	Million pounds	Million pounds	Million pounds	Million pounds	Million pounds	1,000 cases ^{7/}	1,000 cases ^{7/}	1,000 cases ^{7/}	
1947-49 avg.	31.7	2.1	1.0	3.1	0.5	3.6	74.6	99.2	173.8	
1949	31.7	2.3	1.1	3.4	0.4	3.8	78.9	103.0	181.9	
1950	35.6	2.7	1.3	4.0	0.7	4.7	63.2	120.4	183.6	
1951	38.4	3.3	1.8	5.1	0.8	5.9	79.7	131.2	210.9	
1952	37.2	2.7	1.8	4.5	1.0	5.5	81.1	158.4	239.5	
1953	40.2	2.9	2.2	5.1	1.6	6.7	83.3	174.8	258.1	
1954	40.5	3.4	2.5	5.9	1.5	7.4	93.0	194.6	287.6	
1955	41.9	3.5	2.8	6.3	1.9	8.2	97.4	213.5	310.9	
1956	46.8	4.5	2.8	7.3	2.5	9.8	83.8	256.8	340.6	
1957	50.7	5.2	3.2	8.4	2.2	10.6	76.8	289.0	365.8	
1958	52.8	5.4	3.2	8.6	2.5	11.1	75.7	299.2	374.9	
		<u>Percent</u>	<u>Percent</u>				<u>Percent</u>	<u>Percent</u>		
1954-58 avg.		60	40				25	75		

- 1/ EXCLUDING SOME PRODUCTS OF MINOR IMPORTANCE AND PINEAPPLE; QUANTITIES SHIPPED OUT OF THE TERRITORY ARE EXCLUDED.
- 2/ INCLUDING DAIRY CATTLE AND CALVES.
- 3/ SHIPPER-DRESSED WEIGHT.
- 4/ INCLUDING LIVE HOGS SHIPPED INTO THE TERRITORY.
- 5/ PRODUCTION IN HAWAII IN MOST YEARS UNDER 100,000 POUNDS.
- 6/ EVISERATED BASIS.
- 7/ 30-DOZENS PER CASE.

Table 11.--Marketings, 1949-58
Index numbers (1947-49 = 100)

Year	Crops primarily for shipment 1/				
	Sugar raw, 96°	Processed pineapple products 2/	Coffee, green	Macadamia nuts	Honey
1949.....	108	116	89	99	90
1950.....	108	119	65	110	106
1951.....	112	130	114	124	119
1952.....	115	118	117	141	78
1953.....	124	140	125	141	9
1954.....	121	139	125	135	44
1955.....	128	140	151	131	35
1956.....	124	146	132	149	41
1957.....	122	146	134	194	50
1958.....	86	129	220	267	47

SEE FOOTNOTES AT END OF TABLE, PAGE 19.

CONTINUED

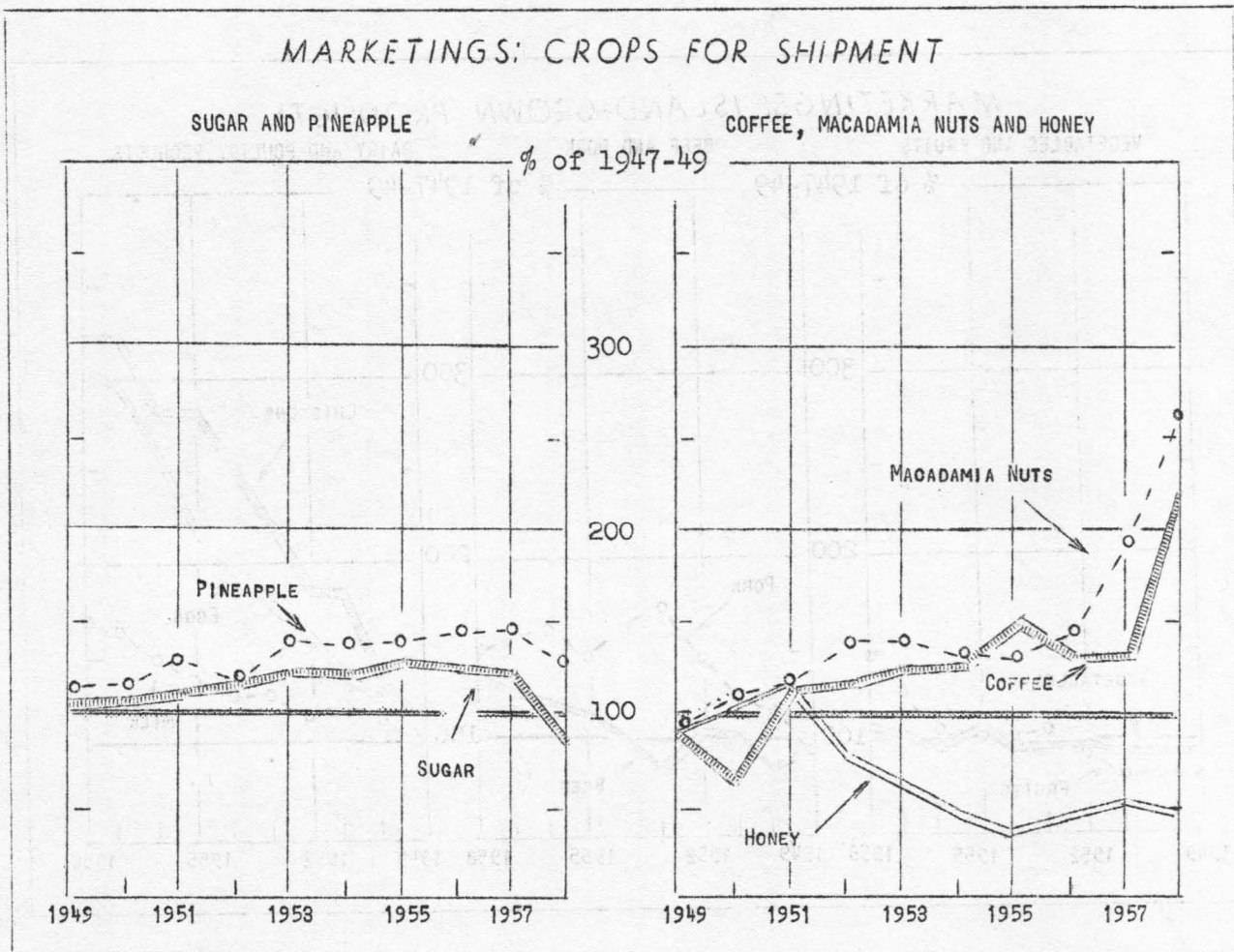


Table 11.--Marketings, 1949-58--Continued
Index numbers (1947-49 = 100)

Year	Marketings of island-grown products ^{3/}										
	Vegetables and melons	Fruits ^{4/}	Total vegetables, melons and fruits	Rice	Taro	Beef and veal	Pork	All red meats	Milk	Chickens	Eggs
1949	99	84	95	100	102	98	97	97	100	110	104
1950	97	83	93	98	87	87	116	94	112	130	121
1951	94	81	90	103	87	100	122	105	121	180	132
1952	100	94	99	80	86	102	143	112	117	180	160
1953	99	107	101	95	82	83	171	105	127	220	176
1954	97	103	98	85	78	100	160	115	128	250	196
1955	107	103	106	77	69	114	148	122	132	280	215
1956	98	107	100	66	76	120	160	130	148	280	259
1957	101	127	107	57	76	127	155	134	160	320	291
1958	105	145	115	45	70	134	150	138	167	320	302

SEE FOOTNOTES AT END OF TABLE, PAGE 19.

CONTINUED

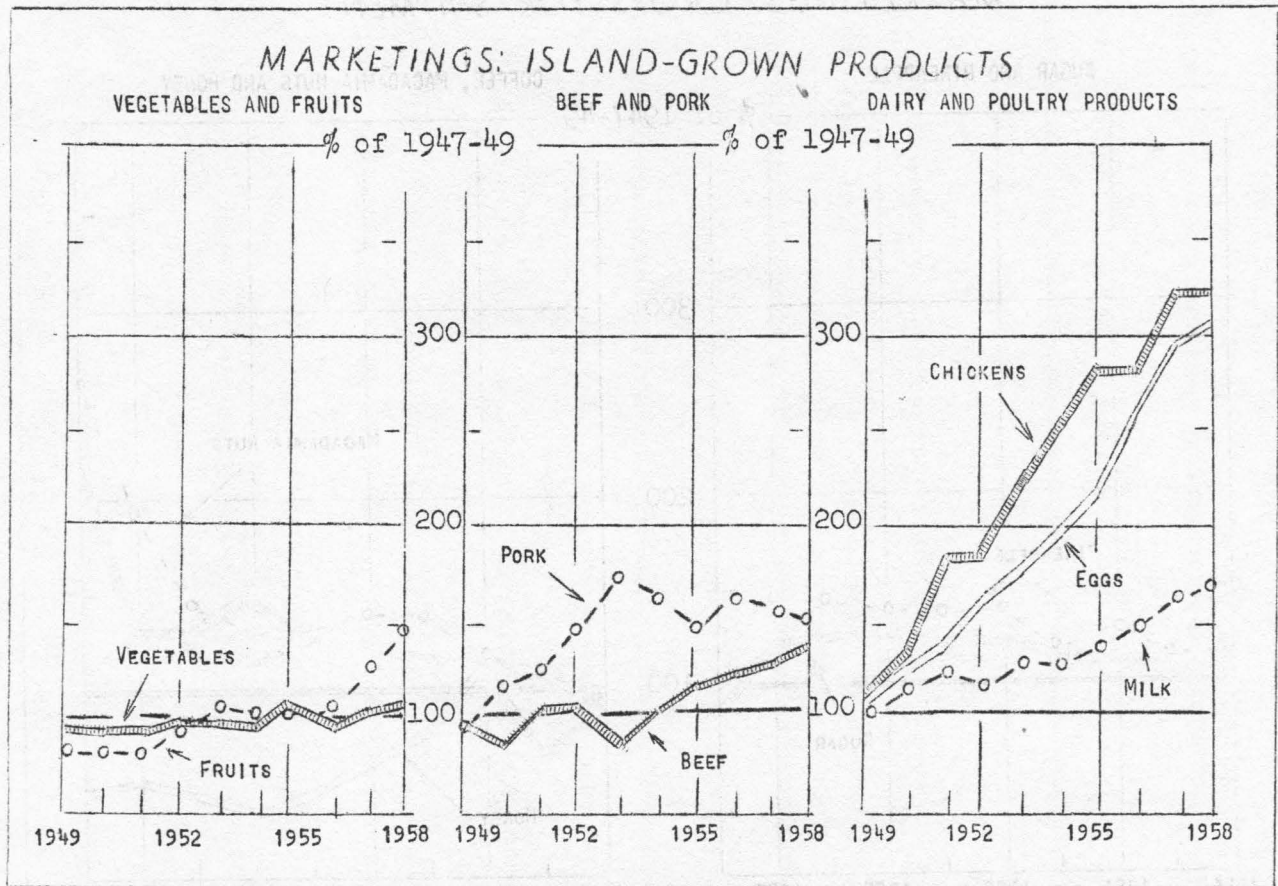


Table 11.--Marketings, 1949-58--Continued
Index numbers (1947-49 = 100)

Year	Territorial market supplies from all sources ^{5/}							
	Vegetables and melons	Fruits	Total vegetables, melons and fruits	Beef and veal	Pork	All red meats	Chickens	Eggs
1949.....	90	83	87	98	98	98	110	105
1950.....	96	94	95	91	121	100	129	106
1951.....	101	101	101	90	120	99	165	121
1952.....	94	92	93	100	129	109	145	138
1953.....	102	102	102	110	135	118	165	149
1954.....	105	104	104	128	135	131	190	165
1955.....	106	100	104	139	138	139	203	179
1956.....	111	107	110	152	155	153	235	196
1957.....	112	111	112	159	144	155	271	210
1958.....	116	115	116	158	142	154	277	216

- 1/ FOR QUANTITIES OF COMMODITIES, SEE TABLE 8.
 2/ CANNED FRUIT AND JUICES.
 3/ FOR QUANTITIES OF CROPS AND HONEY, SEE TABLE 8; FOR QUANTITIES OF LIVESTOCK AND POULTRY PRODUCTS, SEE TABLE 10.
 4/ EXCEPT PINEAPPLES.
 5/ FOR QUANTITIES, SEE TABLE 10.

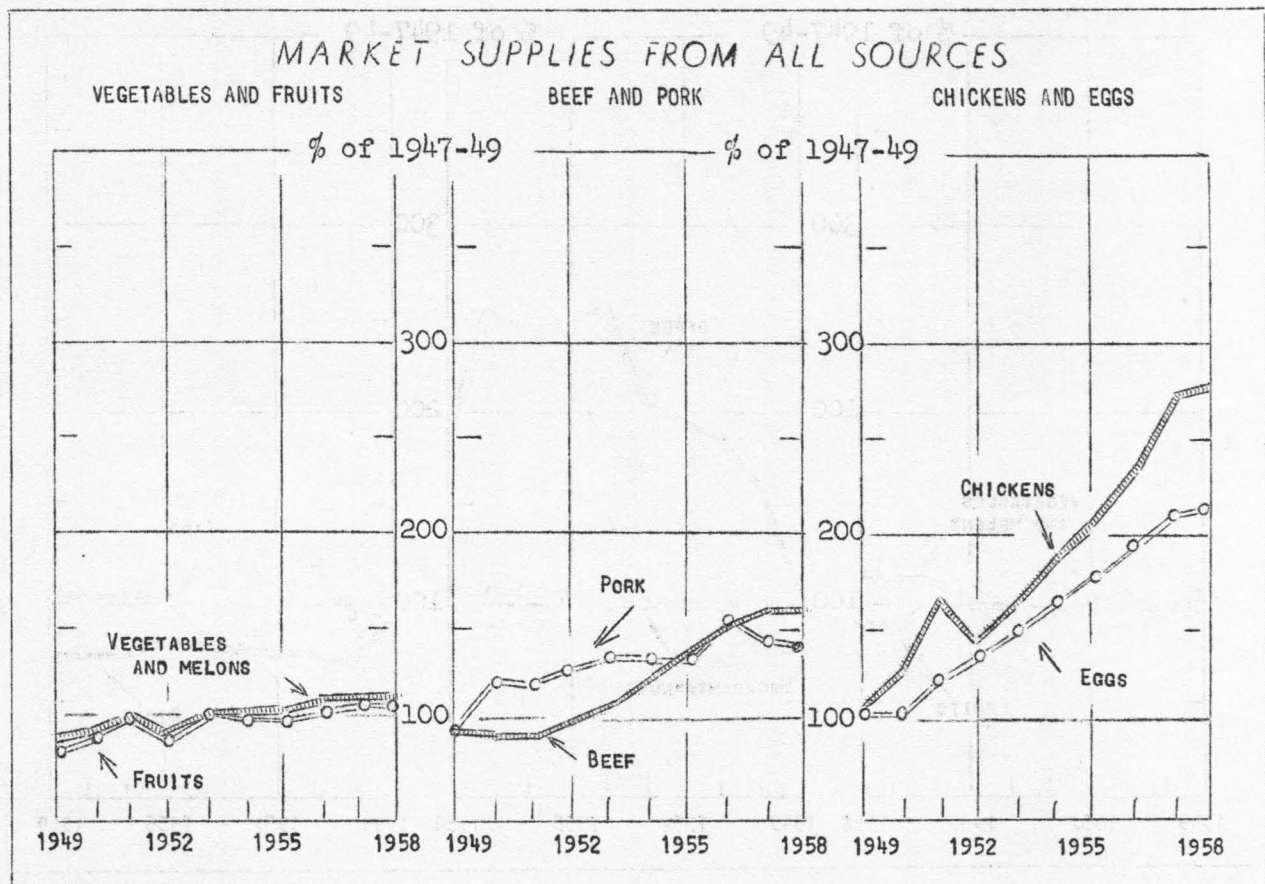


Table 12.--Prices: Selected agricultural products, 1949-58
Index numbers (1947-49 = 100)

Year	Crops					
	Vegetables and melons	Fruits	Coffee	Macadamia nuts	Rice	Taro
1949.....	99	113	102	99	91	65
1950.....	95	98	160	100	70	94
1951.....	105	102	187	100	75	121
1952.....	98	104	195	100	75	94
1953.....	99	92	205	100	79	79
1954.....	100	97	258	100	79	81
1955.....	100	110	248	105	81	104
1956.....	111	102	242	107	74	106
1957.....	113	89	254	109	74	102
1958.....	115	91	192	109	75	106

Continued

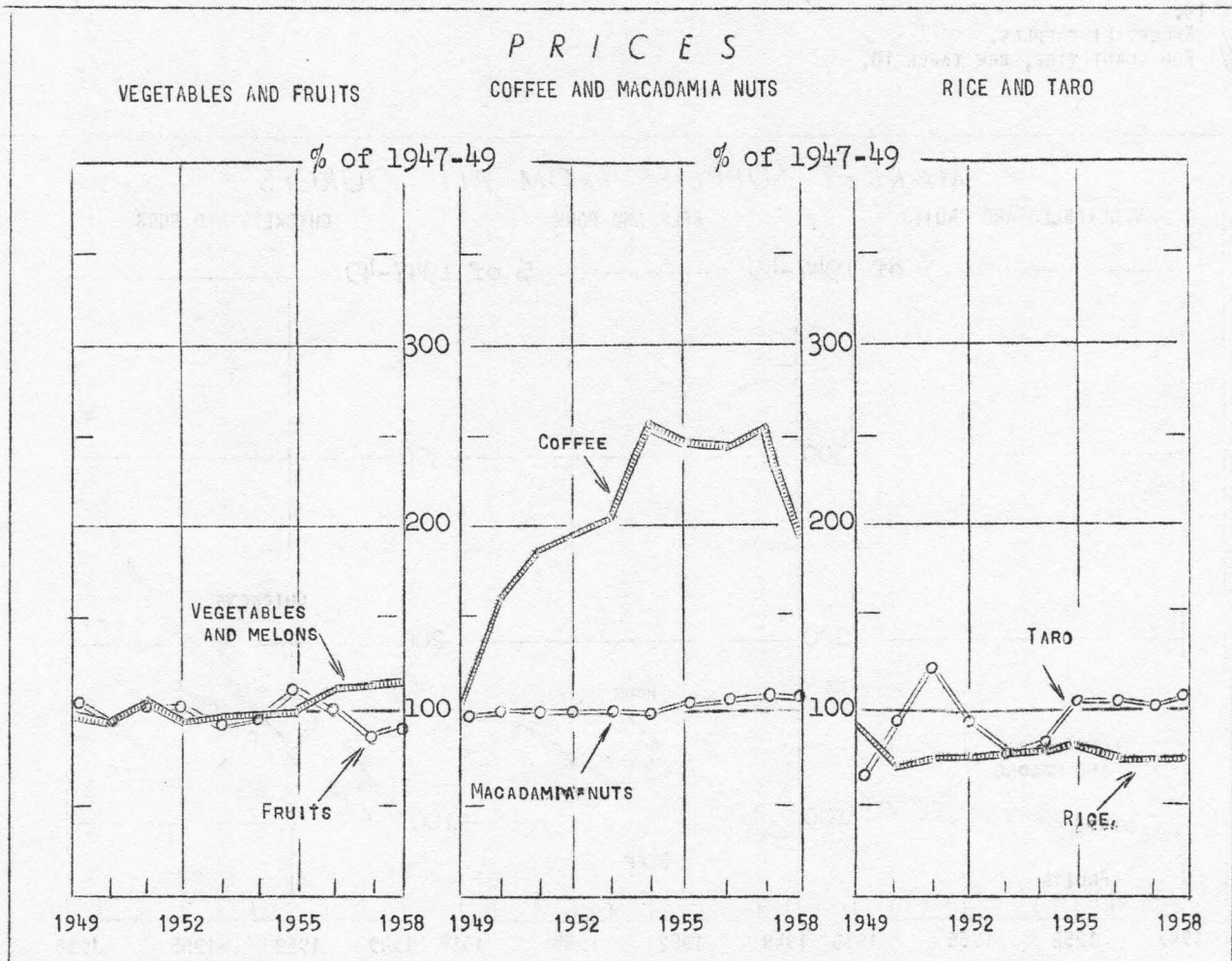


Table 12.--Prices: Selected agricultural products, 1949-58--Continued
Index numbers (1947-49 = 100)

Year	Livestock products					
	Beef	Milk	Hogs	Chickens	Eggs	Honey
1949	106	103	100	103	97	73
1950	118	102	81	79	68	73
1951	120	108	88	89	84	83
1952	115	110	86	79	80	92
1953	104	105	71	85	79	101
1954	98	104	77	79	73	100
1955	95	106	81	75	69	109
1956	91	104	71	73	66	112
1957	94	106	74	68	60	105
1958	104	106	80	62	68	98

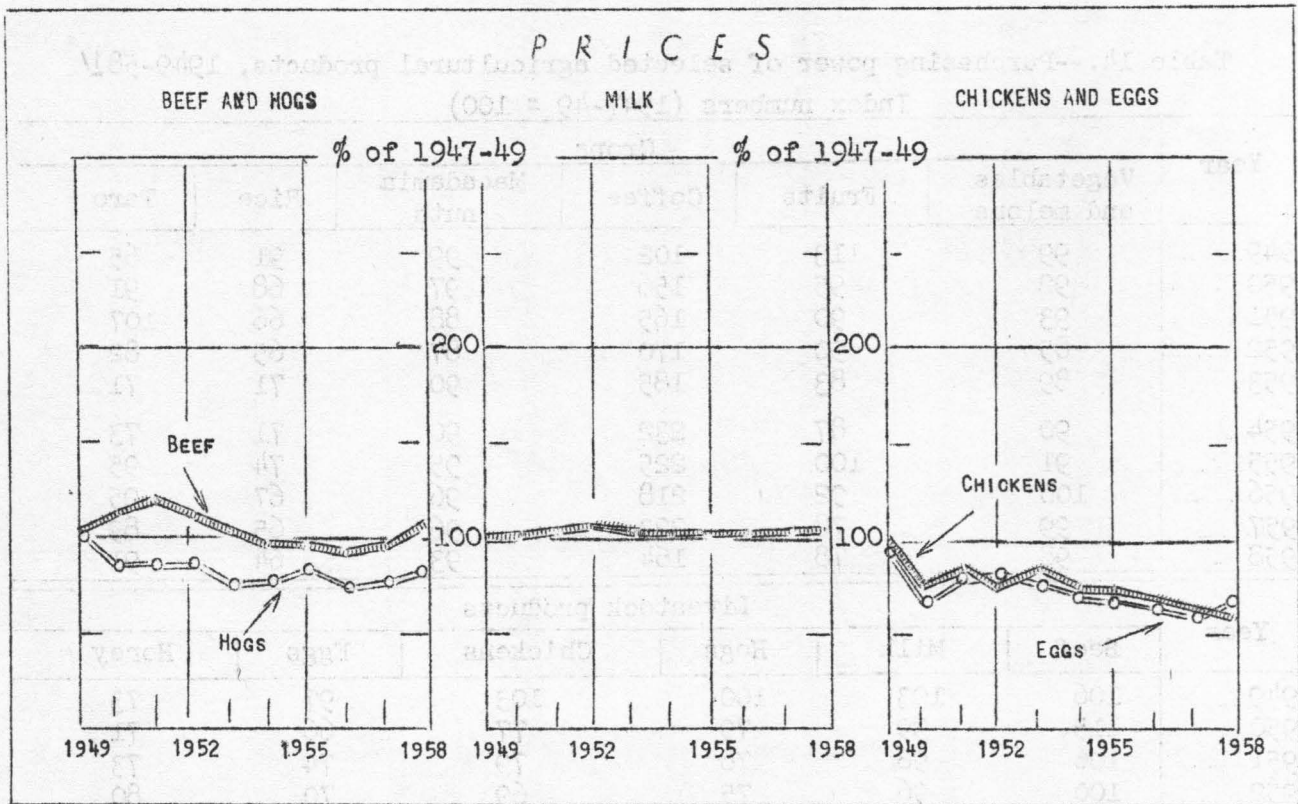


Table 13.--Prices paid, prices received by U. S. farmers,
and U. S. wholesale prices of all commodities, 1949-58

Index numbers (1947-49 = 100)

Year	Prices paid by U.S. farmers 1/	Prices received by U.S. farmers	Wholesale prices of all commodities
1949.....	100	92	99
1950.....	103	95	103
1951.....	113	112	115
1952.....	115	106	112
1953.....	111	94	110
1954.....	111	91	110
1955.....	110	86	111
1956.....	111	85	114
1957.....	114	87	118
1958.....	117	92	119

1/ FOR COMMODITIES, INTEREST, TAXES AND WAGE RATES.

SOURCE: PRICES PAID AND PRICES RECEIVED FROM U.S. DEPT. OF AGRICULTURE, AGRICULTURAL MARKETING SERVICE;
WHOLESALE PRICES FROM U.S. DEPT. OF LABOR, BUREAU OF LABOR STATISTICS.

Table 14.--Purchasing power of selected agricultural products, 1949-58 1/

Index numbers (1947-49 = 100)

Year	Crops					
	Vegetables and melons	Fruits	Coffee	Macadamia nuts	Rice	Taro
1949.....	99	113	102	99	91	65
1950.....	92	95	156	97	68	91
1951.....	93	90	165	88	66	107
1952.....	85	90	170	87	65	82
1953.....	89	83	185	90	71	71
1954.....	90	87	232	90	71	73
1955.....	91	100	225	95	74	95
1956.....	100	92	218	96	67	95
1957.....	99	78	223	96	65	89
1958.....	98	78	164	93	64	91

Year	Livestock products					
	Beef	Milk	Hogs	Chickens	Eggs	Honey
1949.....	106	103	100	103	97	73
1950.....	115	99	79	77	66	71
1951.....	106	96	78	79	74	73
1952.....	100	96	75	69	70	80
1953.....	94	95	64	77	71	91
1954.....	88	94	69	71	66	90
1955.....	86	96	74	68	63	99
1956.....	82	94	64	66	59	101
1957.....	82	93	65	60	53	92
1958.....	89	91	68	53	58	84

1/ BASED ON PRICES PAID BY U.S. FARMERS (SEE TABLE 13).

SECTION II PRICES

Table 15.--Annual average prices: Selected agricultural products, Territory, 1949-58 and average 1947-49 1/

Year	Vegetables and melons 2/					
	Snap beans	Broccoli	Head cabbage	Chinese cabbage	Carrots	Cucumbers
	Cents	Cents	Cents	Cents	Cents	Cents
1947-49 avg.	14.0	15.6	4.5	10.2	7.6	11.9
1949	13.4	16.2	4.7	10.5	7.3	10.3
1950	13.8	15.3	3.6	10.4	4.8	11.9
1951	16.8	20.5	3.9	12.1	5.4	12.7
1952	15.5	18.1	3.5	10.8	6.8	10.2
1953	14.1	18.8	5.8	10.4	6.5	10.6
1954	15.1	19.1	4.0	10.6	6.2	10.9
1955	14.4	16.8	4.6	10.6	7.3	11.0
1956	17.7	16.8	5.1	11.0	7.8	11.9
1957	18.5	18.7	5.2	10.4	8.0	12.7
1958	18.3	20.0	4.9	9.3	8.2	13.0

Year	Vegetables and melons--Continued				
	Lettuce	Dry onions	Sweet peppers	Tomatoes	Watermelons
	Cents	Cents	Cents	Cents	Cents
1947-49 avg.	11.4	7.7	24.1	12.5	11.6
1949	11.9	12.0	24.0	12.2	9.1
1950	12.4	4.3	20.6	14.8	8.4
1951	12.7	7.2	25.9	15.2	8.4
1952	11.0	10.1	19.2	14.0	8.1
1953	10.3	6.0	18.1	13.5	9.0
1954	12.1	6.3	16.2	14.7	9.5
1955	10.8	7.8	16.3	14.3	7.8
1956	12.5	8.7	19.0	15.9	10.0
1957	11.8	8.0	18.3	15.7	10.2
1958	12.1	8.0	18.8	15.5	9.4

SEE FOOTNOTES AT END OF TABLE, PAGE 24.

CONTINUED

Table 15.--Annual average prices: Selected agricultural products, Territory, 1949-58 and average 1947-49--Continued 1/

Year	Fruits 2/			Miscellaneous crops			
	Avocados	Bananas	Papayas	Coffee3/	Macadamia nuts 4/	Rice5/	Taro 6/
	<u>Cents</u>	<u>Cents</u>	<u>Cents</u>	<u>Cents</u>	<u>Cents</u>	<u>Cents</u>	<u>Cents</u>
1947-49 avg.	9.8	7.0	6.0	26.0	17.0	21.6	4.8
1949	9.8	8.1	6.8	26.6	16.9	19.7	3.1
1950	9.3	7.8	5.0	41.7	17.0	15.2	4.5
1951	9.0	7.9	5.6	48.8	17.0	16.1	5.8
1952	8.2	7.3	6.6	50.7	17.0	16.1	4.5
1953	7.6	6.9	5.5	53.2	17.0	17.0	3.8
1954	8.4	7.2	5.9	67.0	17.0	17.0	3.9
1955	8.6	6.9	7.7	64.5	17.9	17.5	5.0
1956	8.6	7.2	6.6	63.0	18.4	16.0	5.1
1957	8.5	6.4	5.6	66.1	18.5	16.0	4.9
1958	7.9	7.4	5.5	50.0	18.5	16.2	5.1

Year	Livestock products					
	Beef7/	Milk8/	Hogs9/	Chickens10/	Eggs11/	Honey12/
	<u>Cents</u>	<u>Cents</u>	<u>Cents</u>	<u>Cents</u>	<u>Cents</u>	<u>Cents</u>
1947-49 avg.	41.6	17.7	42.0	60.3	97.3	10.3
1949	43.9	18.2	42.0	62.1	94.2	7.5
1950	48.9	18.1	34.0	47.6	65.9	7.5
1951	50.1	19.2	37.0	53.8	81.9	8.5
1952	47.7	19.5	36.0	47.4	78.3	9.5
1953	43.4	18.6	29.7	51.2	77.0	10.4
1954	40.6	18.5	32.4	47.6	70.6	10.3
1955	39.6	18.7	34.0	45.0	67.3	11.2
1956	38.0	18.5	29.7	44.3	63.9	11.5
1957	39.3	17.7	30.9	41.3	58.7	10.8
1958	43.1	17.7	33.4	37.7	65.8	10.1

- 1/ PRICES ARE PER POUND EXCEPT MILK, PER QUART AND EGGS, PER DOZEN.
- 2/ WHOLESALE PRICE.
- 3/ SALES BY MILLERS, F.O.B. MILL. 1947-52 PRICES ARE FOR PRIME COFFEE; PRICES FOR OTHER YEARS ARE AVERAGE OF ALL GRADES.
- 4/ SALES BY FARMERS TO PROCESSORS, F.O.B. MILL.
- 5/ SALES BY FARMERS, F.O.B. MILL.
- 6/ SALES AT FARM.
- 7/ SALES BY SLAUGHTERHOUSES, DRESSED WEIGHT.
- 8/ SALES BY FARMERS, DELIVERED BOTTLING PLANT.
- 9/ SALES BY FARMERS, DELIVERED SLAUGHTERHOUSE; LIVE WEIGHT.
- 10/ LIVE WEIGHT: WHOLESALE PRICE FOR 1947-57; PRICES RECEIVED BY FARMERS FOR 1958.
- 11/ WHOLESALE PRICE, 1947-49; PRICES RECEIVED BY FARMERS, 1958.
- 12/ WHOLESALE PRICE; F.A.S. ISLAND PORT.

Table 16.--Island vegetables, fruits and miscellaneous crops:
Annual average price per pound, by islands, 1958

Commodity	Hawaii	Kauai	Maui	Molokai	Oahu
	Cents	Cents	Cents	Cents	Cents
<u>Vegetables and melons 1/</u>					
Beans, snap.....	16.4	20.3	17.5	---	18.5
Broccoli.....	18.8	---	19.0	---	20.5
Burdock.....	23.4	---	---	---	---
Cabbage, head.....	4.8	7.8	4.8	---	6.0
Cabbage, Chinese.....	8.1	17.0	9.9	---	10.2
Cabbage, mustard.....	8.5	---	10.5	---	10.1
Carrots.....	7.6	---	8.6	---	---
Cauliflower.....	---	---	12.8	---	---
Celery.....	12.5	---	13.0	---	11.8
Corn, green.....	6.3	---	6.5	8.5	8.1
Cucumbers.....	11.3	14.1	13.5	13.5	13.2
Daikon.....	5.2	---	6.7	---	7.9
Dasheens.....	19.4	---	---	---	---
Eggplant.....	15.8	17.1	10.7	7.0	12.8
Ginger root.....	37.4	---	---	---	---
Lettuce.....	11.9	---	12.6	---	12.1
Lotus root.....	---	---	---	---	23.3
Onions, dry.....	---	---	7.9	---	11.3
Onions, green.....	12.5	---	---	---	17.0
Peppers, sweet.....	16.9	19.9	18.8	---	18.5
Potatoes.....	7.0	---	9.3	---	---
Pumpkins.....	---	---	6.1	---	---
Squash, Italian.....	11.3	---	---	---	---
Sweetpotatoes.....	8.2	8.8	7.0	---	10.5
Tomatoes.....	15.2	16.5	15.8	13.5	14.9
Watercress.....	---	---	---	---	16.6
Cantaloups.....	---	---	15.0	17.5	17.3
Watermelons.....	10.6	11.0	8.7	10.0	9.3
<u>Fruits 1/</u>					
Avocados.....	7.6	10.0	7.6	---	10.6
Bananas.....	7.9	9.7	5.4	8.4	7.4
Oranges.....	6.6	---	---	---	---
Papayas.....	4.8	7.9	7.0	5.0	6.8
Tangerines.....	11.5	---	---	---	---
<u>Miscellaneous crops</u>					
Coffee, green 2/.....	50.0	---	---	---	---
Macadamia nuts, in shell 3/.....	18.6	17.7	18.0	---	18.0
Rice, milled 4/.....	---	16.2	---	---	---
Taro (for process) 5/.....	6.0	5.3	4.5	5.0	4.3

1/ WHOLESALE PRICE, WEIGHTED FOR GRADE AND SEASONAL VOLUME.
 2/ SALES BY MILLERS, F.O.B. MILL.
 3/ SALES BY MILLERS TO PROCESSORS, F.O.B. MILL.
 4/ SALES BY FARMERS TO PROCESSORS, F.O.B. MILL. MOSTLY "MOCHI" (GLUTEN) RICE.
 5/ SALES AT FARM.

TABLE 17.-- ISLAND VEGETABLES AND FRUITS: HONOLULU WHOLESALE PRICE PER POUND, BY MONTHS, 1958, ANNUAL 1957 1/

COMMODITY	GRADE	JAN.	FEB.	MAR.	APR.	MAY	JUNE	JULY	AUG.	SEPT.	OCT.	NOV.	DEC.	AVERAGE	
														1958	1957
CENTS															
BEANS, SNAP	HAWAII No. 1	30.4	19.0	21.8	20.0	8.3	7.1	17.6	22.1	28.8	28.2	23.8	17.0	20.3	20.8
BROCCOLI	DO.	23.6	25.5	25.5	21.8	12.6	13.6	15.2	19.3	25.7	26.5	26.3	21.8	21.5	21.5
BURDOCK	DO.	24.0	24.0	25.9	29.9	29.0	29.0	29.0	29.0	29.0	29.0	29.0	29.0	28.0	24.8
CABBAGE, HEAD	DO.	9.9	5.5	4.8	4.1	2.6	3.1	3.3	6.0	8.7	8.2	7.8	4.7	5.7	6.3
CABBAGE, CHINESE		11.3	5.9	10.2	10.4	9.0	6.8	12.0	17.5	19.0	11.9	8.8	8.7	11.0	13.0
CABBAGE, MUSTARD (KAI CHOI)		11.9	10.6	17.3	10.8	9.7	12.5	13.6	9.8	10.6	10.7	9.1	6.3	11.1	12.8
CABBAGE, MUSTARD (PAK CHOI)		9.7	9.0	9.1	8.5	8.5	8.0	9.1	10.1	11.0	10.0	10.7	9.2	9.4	9.4
CARROTS, TOPPED	DO.	---	---	---	9.5	10.0	9.5	8.5	8.5	8.5	8.5	8.5	8.5	8.9	8.4
CAULIFLOWER	DO.	19.6	13.8	10.9	13.8	13.0	15.3	11.7	13.8	16.9	14.1	14.8	12.6	14.2	15.4
CELERY	DO.	10.0	10.0	10.0	14.2	14.1	12.0	---	---	11.0	11.0	11.0	11.0	11.4	10.4
CORN, GREEN	DO.	8.5	8.5	8.5	8.5	8.5	8.5	8.5	8.5	8.5	8.5	8.5	8.5	8.5	8.5
CUCUMBERS	DO.	24.4	19.2	22.5	12.2	5.4	6.5	13.9	22.6	16.7	15.5	18.1	10.0	15.6	15.1
DAIKON, BUNCHED		9.0	8.5	8.9	8.9	7.8	7.4	6.7	7.5	9.4	7.3	7.3	7.0	8.0	7.0
DASHEENS		26.5	26.5	26.5	29.4	32.5	32.5	31.8	28.4	24.0	20.9	19.0	19.0	26.4	24.9
EGGPLANT, LONG		17.2	16.8	18.1	15.4	8.8	12.5	9.6	14.9	16.2	16.0	17.3	17.7	15.0	13.7
EGGPLANT, ROUND		11.5	13.5	12.7	11.2	7.9	10.1	8.2	7.8	11.0	10.9	11.0	10.9	10.6	8.8
GINGER ROOT		31.5	35.8	38.9	34.0	37.2	44.3	57.5	67.5	67.5	67.5	67.5	67.5	51.4	32.0
LETTUCE, ICEBERG TYPE	DO.	15.0	12.8	13.5	13.5	16.7	15.5	14.2	11.0	11.6	11.0	11.0	12.6	13.2	14.6
LETTUCE, SEMI-HEAD	DO.	10.3	9.3	16.0	11.4	6.7	9.8	16.0	14.0	12.0	14.2	16.2	10.4	12.2	14.2
LOTUS ROOT		21.9	21.9	---	---	---	---	---	38.6	26.0	21.5	21.5	21.6	24.7	23.7
ONIONS, DRY	DO.	---	11.3	10.2	11.2	8.2	6.4	5.9	5.9	6.0	---	---	---	8.1	8.1
ONIONS, GREEN, BUNCHED		20.7	18.8	19.3	22.1	16.5	13.6	13.5	12.1	16.5	17.1	18.3	16.6	17.1	15.6
PEAS, SMALL CHINESE		---	65.8	59.4	66.8	34.2	49.4	60.7	73.8	74.7	84.4	90.8	60.8	65.5	69.9
PEPPERS, SWEET	DO.	26.5	25.7	25.2	24.3	18.0	14.6	13.5	15.9	16.1	21.5	20.5	13.7	19.6	19.3
SQUASH, ITALIAN	DO.	---	20.0	19.8	13.6	12.0	10.0	8.7	13.3	16.6	17.0	19.0	12.2	14.7	15.9
SWEETPOTATOES, REDS	DO.	12.5	13.0	13.0	13.0	13.0	13.0	12.4	12.0	11.3	9.0	9.0	9.0	11.7	9.8
SWEETPOTATOES, BAKER VARIETIES	DO.	11.0	11.1	11.0	11.0	11.0	11.0	11.0	11.0	10.7	9.0	9.0	9.0	10.5	10.0
TOMATOES, LOOSE	DO.	25.9	25.1	17.9	19.6	15.1	15.4	13.2	14.9	14.0	16.9	16.4	14.3	17.4	17.8
TOMATOES, LOOSE	HAWAII No. 2	21.4	23.0	13.8	16.3	12.4	13.3	10.4	12.4	11.5	14.8	12.8	9.6	14.3	14.7
WATERCRESS		17.9	16.0	19.0	17.6	16.0	16.0	16.0	16.0	16.0	16.0	16.0	16.0	16.5	14.0
YAM BEAN ROOT		16.7	14.2	12.3	14.0	14.0	13.8	12.9	15.4	18.4	---	22.8	21.4	16.0	15.4
WATERMELONS		---	---	24.0	18.4	10.2	9.3	8.2	8.1	9.5	11.0	---	---	12.3	11.9
AVOCADOS	HAWAII No. 1	11.8	11.5	11.5	11.5	11.5	11.5	11.5	11.5	11.5	9.9	9.8	9.4	11.1	10.7
BANANAS, BLUEFIELD		9.1	9.5	9.5	9.7	9.9	9.9	10.0	10.3	10.5	10.5	10.5	10.5	10.0	9.0
BANANAS, APPLE (BRAZILIAN)		6.2	6.8	6.9	7.3	7.5	7.5	7.5	7.7	7.5	7.5	7.5	7.5	7.3	6.3
BANANAS, CHINESE (CAVENDISH)		5.7	6.8	6.9	7.8	7.9	7.9	8.0	8.0	8.0	7.8	7.5	7.5	7.5	5.9
PAPAYAS	DO.	7.5	7.2	6.5	8.1	7.9	5.8	5.2	6.0	8.4	8.2	7.1	6.9	7.1	6.7
TANGERINES		8.9	11.0	14.0	---	---	---	---	---	---	---	22.7	10.7	13.5	21.1

1/ PART TRUCKLOT OR TRUCKLOT QUANTITIES SOLD TO RETAILERS AND RESTAURANTS FOR STOCK OF GENERALLY GOOD QUALITY WHEN GRADE IS UNSPECIFIED.

Table 18.--Island livestock and poultry products: Annual average prices, by islands, 1958^{1/}

Commodity	Unit	Hawaii	Kauai	Maui	Molokai-Lanai	Oahu	Territory
		Cents	Cents	Cents	Cents	Cents	Cents
Cattle and calves:							
Dairy cows	Pound	29.0	31.2	32.7	36.4	28.7	29.1
Other cattle	do.	40.2	41.6	41.5	38.7	39.7	40.4
Veal calves	do.	---	---	---	---	24.7	24.7
Milk	Quart	17.3	19.0	18.2	18.2	17.6	17.7
Hogs	Live weight, pound	31.3	37.0	33.0	36.2	33.5	33.4
Chickens:							
Hens, roosters	Live weight, pound	29.2	27.9	36.7	45.0	26.8	28.1
Fryers, roasters, broilers	Live weight, pound	46.9	42.0	43.5	50.0	43.0	43.2
Eggs	Dozen	63.0	66.8	67.0	67.0	66.3	65.8
Honey ^{2/}	Pound	13.0	7.5	8.5	8.5	12.5	10.1
Beeswax ^{2/}	do.	48.0	50.0	45.0	45.0	45.0	46.2

1/ PRICES RECEIVED BY FARMERS.
 2/ WHOLESALE, F.A.S. ISLAND PORT.

TABLE 19.--ISLAND BEEF: MONTHLY AVERAGE HONOLULU PRICE PER POUND, DRESSED WEIGHT, 1958 1/

CLASS	JAN.	FEB.	MAR.	APR.	MAY	JUNE	JULY	AUG.	SEPT.	OCT.	NOV.	DEC.	1958	1957
	<u>CENTS</u>													
STEERS	45.9	46.3	47.5	48.3	48.3	48.3	48.3	46.0	46.3	46.3	46.3	47.6	47.1	40.4
HEIFERS	44.9	45.3	46.5	47.3	47.3	47.3	47.3	45.0	45.3	45.3	44.8	45.4	46.0	39.3
COWS	37.1	37.3	38.3	39.3	39.3	39.3	39.3	39.3	39.6	39.7	39.9	40.3	39.1	34.4
BULLS	30.3	30.3	31.3	31.3	31.3	31.3	31.3	31.3	31.3	33.3	33.3	35.3	31.8	26.7

1/ SALES BY SLAUGHTERHOUSES FOR TOP GRADE.

TABLE 20.--ISLAND HOGS: MONTHLY AVERAGE HONOLULU WHOLESALE PRICE PER POUND, LIVE WEIGHT, 1958 1/

CLASS	JAN.	FEB.	MAR.	APR.	MAY	JUNE	JULY	AUG.	SEPT.	OCT.	NOV.	DEC.	1958	1957
	<u>CENTS</u>													
BUTCHERS: UP TO 200 POUNDS	27.6	30.0	30.5	32.0	32.0	32.0	32.2	35.5	37.1	37.5	38.3	39.2	33.7	30.5
ROASTERS	30.4	32.0	32.5	34.0	34.0	34.0	34.2	37.5	39.1	38.5	40.3	41.2	35.6	32.7

1/ DELIVERED SLAUGHTERHOUSES.

TABLE 21.--POULTRY: MONTHLY AVERAGE HONOLULU WHOLESALE PRICE PER POUND, BY ORIGIN AND CLASSES, 1958

ORIGIN AND CLASS	GRADE	JAN.	FEB.	MAR.	APR.	MAY	JUNE	JULY	AUG.	SEPT.	OCT.	NOV.	DEC.	1958	1957
<u>CENTS</u>															
CHICKENS, ISLAND															
EVISGERATED:															
BROILERS		67.2	67.0	67.0	67.5	69.4	72.4	75.0	76.0	73.1	69.6	66.0	66.0	69.7	---
FRYERS		67.7	67.4	67.4	67.9	69.9	72.9	75.5	76.4	73.5	70.1	66.4	66.3	70.1	68.0
ROASTERS		69.5	69.4	69.4	69.8	72.9	76.5	82.0	82.0	77.8	74.1	70.4	70.3	73.7	69.6
STEWERS, COLORED		49.5	50.0	50.0	50.8	54.0	56.0	56.0	56.0	56.0	55.2	55.0	55.0	53.6	51.6
STEWERS, WHITE		41.0	41.0	41.0	41.5	43.8	45.5	45.5	45.5	45.5	45.1	45.0	45.0	43.8	41.9
N. Y. DRESSED:															
BROILERS		50.2	49.0	49.0	49.8	53.6	56.5	62.0	62.0	58.3	52.8	46.0	46.3	53.0	---
FRYERS		50.7	49.4	49.4	50.3	54.1	56.9	62.0	62.0	58.6	53.3	46.4	46.6	53.3	51.4
ROASTERS		52.4	53.9	53.9	54.3	57.6	60.8	67.0	67.0	61.7	56.2	50.4	50.8	57.2	---
STEWERS, COLORED		41.5	41.5	41.5	42.0	44.8	46.0	46.0	46.0	46.0	45.2	45.0	45.0	44.2	41.0
STEWERS, WHITE		32.3	32.9	32.9	32.5	33.3	34.4	34.0	34.0	34.0	33.2	33.0	33.0	33.3	32.9
CHICKENS, MAINLAND															
EVISGERATED:															
BROILERS	A	55.3	54.0	54.0	56.4	57.2	57.2	57.3	57.7	57.7	57.7	57.7	57.7	56.7	56.2
FRYERS, CUT UP	A	53.6	53.0	53.0	53.0	53.2	54.3	57.7	57.5	57.3	58.4	56.7	56.7	55.4	55.4
FRYERS, WHOLE	A	48.2	46.0	46.0	47.6	47.6	50.7	50.8	51.1	51.0	51.5	49.5	49.5	49.1	49.8
ROASTERS	A	56.7	56.5	56.5	55.6	55.4	56.2	58.2	58.2	57.7	57.7	57.7	57.7	57.0	57.4
FOWL	A	45.5	45.5	46.5	46.2	46.4	47.2	49.3	49.5	49.5	49.3	48.5	48.5	47.7	46.3
OTHER POULTRY, MAINLAND															
TURKEYS, EVISGERATED:															
HENS	A	52.0	51.5	50.9	53.0	55.3	60.0	57.5	53.4	52.3	50.1	49.4	49.2	52.9	49.8
TOMS	A	46.1	46.0	46.0	45.8	46.0	48.2	48.3	48.5	48.5	48.1	46.3	45.2	46.9	48.4
DUCKS, EVISGERATED															
DUCKS, N. Y. DRESSED	A	53.0	53.0	53.0	53.0	53.6	54.5	53.7	53.3	53.3	53.3	53.3	53.3	53.4	53.1
DUCKS, N. Y. DRESSED	A	45.3	45.5	45.5	45.5	45.5	45.5	45.5	45.5	45.5	45.5	45.5	45.5	45.5	45.7

TABLE 22.--EGGS: MONTHLY AVERAGE HONOLULU WHOLESALE PRICE PER DOZEN, BY ORIGIN, 1958

ORIGIN	CONTAINER	GRADE AND SIZE	JAN.	FEB.	MAR.	APR.	MAY	JUNE	JULY	AUG.	SEPT.	OCT.	NOV.	DEC.	1958	1957	
<u>CENTS</u>																	
ISLAND	CARTONS	A LARGE	76.0	69.1	63.0	63.0	63.0	63.0	68.1	72.8	75.0	75.0	75.0	76.3	69.9	65.6	
		A MEDIUM	67.0	62.3	58.0	58.0	58.0	58.0	59.5	67.0	67.0	67.0	67.4	69.0	69.9	63.4	56.8
		A SMALL	54.0	52.6	50.0	50.0	49.5	47.5	47.3	54.7	54.7	54.7	55.6	58.0	58.0	52.7	44.6
MAINLAND	LOOSE, IN CASES	A LARGE	63.6	58.0	58.1	58.8	57.7	55.8	58.5	61.2	65.7	64.5	62.0	63.3	60.6	55.9	
		A MEDIUM	58.8	53.1	53.3	55.1	52.4	48.8	49.0	50.7	53.9	54.8	51.9	53.0	52.9	49.5	

SECTION III SHIPMENTS

Table 23.--Fresh vegetables and fruits: Inshipments, by destination, 1958, totals 1954-57 1/

Commodity	Destination				Total Receipts				
	Hawaii	Kauai	Maui	Oahu	1958	1957	1956	1955	1954
	1,000 pounds	1,000 pounds	1,000 pounds	1,000 pounds	1,000 pounds	1,000 pounds	1,000 pounds	1,000 pounds	1,000 pounds
Vegetables and melons									
Artichokes	---	---	---	44	44	55	77	90	68
Asparagus	---	---	---	31	31	41	34	36	35
Broccoli	2	---	---	63	65	88	68	28	51
Brussels sprouts	---	---	---	3	3	3	4	6	7
Cabbage, head	---	21	---	410	431	348	481	70	44
Cabbage, Chinese	---	---	---	40	40	94	35	9	8
Cabbage, mustard	---	---	---	10	10	48	10	4	4
Carrots	277	144	11	2,988	3,420	3,707	3,772	2,803	2,871
Cauliflower	17	4	---	103	124	155	198	79	200
Celery	20	105	20	2,374	2,519	2,235	2,693	1,821	2,393
Cucumbers	---	---	---	13	13	29	19	16	11
Garlic	26	11	10	150	197	185	193	195	246
Ginger root	---	---	---	18	18	---	---	---	---
Lettuce	7	27	---	3,132	3,166	3,444	3,170	1,799	2,108
Onions, dry	711	273	169	5,325	6,478	7,271	8,261	7,202	8,031
Onions, green	---	---	---	10	10	29	22	3	---
Peas (all types)	1	---	---	5	6	6	5	2	3
Peppers, sweet	1	---	---	113	114	105	94	86	155
Potatoes	2,228	645	573	25,883	29,329	26,515	24,792	23,792	23,941
Pumpkins	---	---	---	13	13	9	8	8	6
Squash	---	1	---	103	104	145	132	112	134
Sweetpotatoes	5	1	4	346	356	313	266	265	334
Tomatoes	40	1	---	1,481	1,522	1,698	1,869	678	1,129
Turnips and rutabagas	---	---	---	44	44	77	49	78	51
Cantaloups	20	3	2	619	644	667	979	665	688
Honeydews and honeyballs	11	2	6	434	453	328	569	351	482
Watermelons	73	---	18	430	521	459	750	100	650
Other melons	2	---	---	33	35	35	38	40	80
Total	3,441	1,238	813	44,218	49,710	48,089	48,450	40,338	43,730

Fruits									
Apples	485	229	272	6,419	7,405	6,782	6,713	6,087	6,700
Bananas	---	---	---	5	5	---	19	---	---
Crab apples	2	---	2	37	41	47	41	49	36
Apricots	---	---	---	2	2	9	11	10	17
Cherries	1	---	3	85	89	85	139	149	111
Cranberries	---	---	---	12	12	9	12	10	14
Grapefruit	89	38	56	1,558	1,741	1,926	2,151	1,800	1,780
Grapes	129	41	62	1,502	1,734	1,665	2,247	1,797	2,028
Lemons	52	20	34	1,326	1,432	1,465	1,496	1,381	1,452
Nectarines	46	4	10	425	485	538	598	534	781
Oranges	384	351	455	8,299	9,489	10,846	10,801	11,024	11,443
Peaches	23	3	5	491	522	551	678	417	460
Pears	128	35	42	1,652	1,857	1,974	2,067	1,439	1,616
Persimmons	5	2	---	51	58	52	73	75	107
Plums	28	3	22	542	595	733	989	738	836
Strawberries	---	---	---	2	2	7	12	5	---
Tangerines	---	5	1	105	111	259	248	157	196
Total	1,372	751	946	22,511	25,580	26,948	28,295	25,672	27,577
Total vegetables and fruits	4,813	1,989	1,759	66,729	75,290	75,037	76,745	66,010	71,307

1/ INCLUDING SHIP AND PLANE SHIPMENTS FROM ALL SOURCES.

Table 24.--Frozen vegetables, fruits, and fruit juices: Inshipments from the U. S. Mainland, by destination, 1958, totals 1954-57

Commodity	Destination				Total Receipts				
	Hawaii	Kauai	Maui	Oahu	1958	1957	1956	1955	1954
	1,000	1,000	1,000	1,000	1,000	1,000	1,000	1,000	1,000
	pounds	pounds	pounds	pounds	pounds	pounds	pounds	pounds	pounds
<u>Vegetables</u>									
Asparagus	---	---	---	39	39	55	50	44	44
Beans, lima	10	---	---	139	149	137	139	137	127
Beans, snap	9	2	1	255	267	273	235	209	167
Broccoli	3	1	1	179	184	197	158	124	116
Brussels sprouts	---	---	---	48	48	65	52	52	51
Carrots	2	---	---	9	11	6	8	7	6
Cauliflower	1	---	---	34	35	47	46	45	45

Continued

Table 24.--Frozen vegetables, fruits, and fruit juices: Inshipments from the U. S. Mainland, by destination, 1958, totals 1954-57--Continued

Commodity	Destination				Total Receipts				
	Hawaii	Kauai	Maui	Oahu	1958	1957	1956	1955	1954
	1,000 pounds	1,000 pounds	1,000 pounds	1,000 pounds	1,000 pounds	1,000 pounds	1,000 pounds	1,000 pounds	1,000 pounds
Corn	4	---	---	195	199	199	193	123	106
Peas	29	7	10	443	489	507	435	384	365
Peas and carrots	8	2	---	140	150	139	116	78	58
Potatoes	1	---	---	87	88	89	81	58	41
Rhubarb	---	---	---	4	4	5	10	10	12
Spinach	2	---	---	103	105	130	138	104	89
Succotash	---	---	---	20	20	27	31	20	20
Mixed vegetables	12	---	1	195	208	211	198	164	141
Total	81	12	13	1,890	1,996	2,087	1,890	1,559	1,388
Fruits									
Apples and applesauce	---	---	---	42	42	34	27	35	33
Cherries	---	---	---	22	22	22	25	32	26
Melon balls	---	---	---	5	5	13	15	13	4
Peaches	---	---	---	12	12	32	37	30	27
Strawberries	10	1	2	231	244	275	321	282	276
Other berries	---	---	---	33	33	38	37	38	40
Total	10	1	2	345	358	414	462	430	406
Unspecified vegetables and fruits	---	1	---	6	7	8	30	16	9
Total vegetables and fruits	91	14	15	2,241	2,361	2,509	2,382	2,005	1,803
Fruit juices									
Grape	150	43	168	5,430	5,791	8,264	8,327	5,380	5,638
Grapefruit	3	3	---	680	686	2,453	1,592	763	858
Lemon	102	48	27	2,173	2,350	2,852	7,459	2,551	2,376
Lemonade	285	22	111	8,665	9,083	10,666	8,304	8,735	10,443
Lime	---	---	---	116	116	185	523	687	508
Limeade	2	5	---	710	717	1,376	480	297	220
Orange	1,267	359	746	39,139	41,511	69,066	62,895	50,878	55,379
Orangeade	75	28	12	828	943	904	705	536	1,510
Tangerine	2	1	---	528	531	1,317	1,042	1,318	1,057
Unspecified	81	4	107	367	559	1,086	462	266	140
Total	1,967	513	1,171	58,636	62,287	98,169	91,789	71,411	78,129

Table 25.--Peanuts, rice and soybeans: Inshipments from all sources, by destination, 1958, totals 1954-57 1/

Commodity	Destination				Total Receipts				
	Hawaii	Kauai	Maui	Oahu	1958	1957	1956	1955	1954
	1,000 <u>pounds</u>	1,000 <u>pounds</u>	1,000 <u>pounds</u>	1,000 <u>pounds</u>	1,000 <u>pounds</u>	1,000 <u>pounds</u>	1,000 <u>pounds</u>	1,000 <u>pounds</u>	1,000 <u>pounds</u>
Peanuts sacked: Shelled and unshelled	3	---	8	375	386	396	324	368	341
Rice:									
Brown	10	7	13	95	125	149	110	201	267
Clean 2/	9,707	4,354	4,982	37,170	56,213	57,510	60,829	62,722	61,182
Mochi	61	---	27	240	328	237	148	208	119
Soybeans	318	---	80	1,459	1,857	2,051	1,912	1,939	2,324

1/ RECEIPTS WERE FROM THE U.S. MAINLAND UNLESS OTHERWISE SPECIFIED.

2/ INCLUDING SHIPMENTS UNDER THE COMMODITY DISTRIBUTION PROGRAM OF THE AGRICULTURAL MARKETING SERVICE, U.S.D.A. (1,000 POUNDS): 958 IN 1958, 449 IN 1957, 692 IN 1956 AND 579 IN 1955.

Table 26.--Peanuts, rice and soybeans: Inshipments from all sources, by months, 1958 1/

Commodity	Jan.	Feb.	Mar.	Apr.	May	June	July	Aug.	Sept.	Oct.	Nov.	Dec.	Total
	<u>1,000 pounds</u>												
Peanuts, sacked Shelled and unshelled	25	6	24	55	34	54	16	26	45	23	23	55	386
Rice:													
Brown	9	6	1	7	13	24	16	15	15	3	9	7	125
Clean	8,369	6,836	1,557	3,498	7,398	6,429	1,728	3,856	4,860	3,796	4,125	3,761	56,213
Mochi	22	9	14	36	4	21	26	17	7	35	53	84	328
Soybeans	180	150	90	245	80	187	98	125	89	120	123	370	1,857

1/ RECEIPTS WERE FROM THE U.S. MAINLAND UNLESS OTHERWISE SPECIFIED.

Table 27.--Feed grains and feedstuffs: Inshipments from all sources, by destination, 1958, totals 1954-57

Commodity	Destination				Total Receipts				
	Hawaii	Kauai	Maui	Oahu	1958	1957	1956	1955	1954
	Tons	Tons	Tons	Tons	Tons	Tons	Tons	Tons	Tons
Feed grains									
Barley 1/	1,117	611	1,184	6,467	9,379	10,761	11,504	11,405	12,250
Corn 2/	1,300	27	187	5,501	7,015	7,841	7,616	7,250	5,947
Oats 1/	53	14	10	150	227	352	581	1,131	748
Wheat 1/	95	---	39	624	758	655	757	748	960
Sorghums	320	---	205	1,403	1,928	1,575	1,550	1,758	2,629
Total feed grains	2,885	652	1,625	14,145	19,307	21,184	22,008	22,292	22,534
Mixed feeds									
Dairy	544	15	34	5,169	5,762	2,440	2,310	2,382	2,695
Hog 3/	317	330	153	3,265	4,065	4,313	5,087	5,123	4,889
Poultry 3/	6,093	4,773	3,202	17,375	31,443	31,597	32,221	30,774	33,479
Poultry scratch	981	652	519	846	2,998	3,430	4,036	4,449	4,764
Pigeon	32	9	51	391	483	482	519	565	590
Rabbit 3/	44	37	102	308	491	601	789	952	1,247
Other mixed feeds 1/	95	38	46	589	768	653	704	647	684
Total mixed feeds	8,106	5,854	4,107	27,943	46,010	43,516	45,666	44,892	48,348
Feedstuffs									
Rice bran	---	---	---	2	2	50	173	225	188
Wheat bran	---	1	---	3	4	---	1	51	32
Middlings	720	234	465	2,177	3,596	3,646	3,780	4,403	4,987
Millrun	695	154	56	3,528	4,433	5,129	4,764	5,432	5,298
Misc. mill feeds	12	---	19	385	416	965	1,012	321	264
Copra meal	---	---	---	4,740	4,740	4,127	2,983	1,165	1,115
Cottonseed meal	169	445	310	3,205	4,129	4,419	3,931	3,405	4,507
Linseed meal	---	---	---	3	3	15	10	---	3
Soybean meal	752	46	92	7,369	8,259	8,420	6,854	6,124	4,402
Fish meal	---	---	---	108	108	187	303	309	339
Meat and bone meal	103	13	23	7	146	111	87	100	349
Whey	7	---	12	44	63	19	23	43	41
Misc. protein feeds	---	---	---	---	---	23	93	58	182

Alfalfa meal 3/	275	28	289	5,237	5,829	8,643	8,745	9,050	8,119
Beet pulp	---	---	---	1,293	1,293	210	1	49	85
Brewers' grain	---	---	---	---	---	3	---	---	---
Total feedstuffs	2,733	921	1,266	28,101	33,021	35,967	32,760	30,735	29,911
Total all feeds 1958	13,724	7,427	6,998	70,189	98,338				
1957	14,305	8,287	7,472	70,603		100,667			
1956	14,624	8,080	7,668	70,062			100,434		
1955	15,057	7,912	9,404	65,546				97,919	
1954	15,318	8,329	9,907	67,239					100,793

- 1/ ROLLED, GROUND, AND WHOLE.
- 2/ CRACKED, GROUND, AND WHOLE.
- 3/ INCLUDING PELLETS.
- 4/ INCLUDING CALF FEED.

1958	1957	1956	1955	1954	1953	1952	1951	1950	1949	1948	1947	1946	1945
13,724	14,305	14,624	15,057	15,318	15,579	15,840	16,101	16,362	16,623	16,884	17,145	17,406	17,667
7,427	8,287	8,080	7,912	8,329	8,590	8,851	9,112	9,373	9,634	9,895	10,156	10,417	10,678
6,998	7,472	7,668	9,404	9,907	10,168	10,429	10,690	10,951	11,212	11,473	11,734	11,995	12,256
70,189	70,603	70,062	65,546	67,239	68,732	70,225	71,718	73,211	74,704	76,197	77,690	79,183	80,676
98,338	100,667	100,434	97,919	100,793	102,286	103,779	105,272	106,765	108,258	109,751	111,244	112,737	114,230

TABLE 28.—FEED GRAINS AND FEEDSTUFFS: INSHIPMENTS FROM ALL SOURCES, BY MONTHS, 1958

COMMODITY	JAN.	FEB.	MAR.	APR.	MAY	JUNE	JULY	AUG.	SEPT.	OCT.	NOV.	DEC.	TOTAL
T O N S													
FEED GRAINS													
BARLEY 1/	1,221	681	732	721	502	1,140	845	383	1,149	566	833	606	9,379
CORN 2/	622	938	330	562	586	1,080	589	466	321	326	398	797	7,015
OATS 1/	15	38	3	28	17	26	9	25	25	26	3	12	227
WHEAT 1/	71	106	29	28	45	35	59	47	87	55	89	107	758
SORGHUMS	118	151	78	41	222	60	50	97	273	200	279	359	1,928
TOTAL FEED GRAINS	2,047	1,914	1,172	1,380	1,372	2,341	1,552	1,018	1,855	1,173	1,602	1,881	19,307
MIXED FEEDS													
DAIRY	537	510	653	536	1,338	915	179	122	298	199	138	337	5,762
HOG 3/	458	332	378	382	368	499	223	164	256	456	182	367	4,065
POULTRY 3/	3,326	2,287	1,967	2,169	3,148	3,940	1,532	1,946	2,650	3,181	2,190	3,107	31,443
POULTRY SCRATCH	395	341	179	129	133	281	219	234	242	326	247	272	2,998
PIGEON	33	38	28	39	66	48	17	33	73	46	24	38	483
RABBIT 3/	46	51	34	23	64	42	12	41	51	54	41	32	491
OTHER MIXED FEEDS 4/	64	57	59	76	75	64	37	65	81	58	68	64	768
TOTAL MIXED FEEDS	4,859	3,616	3,298	3,354	5,192	5,789	2,219	2,605	3,651	4,320	2,890	4,217	46,010
FEEDSTUFFS													
RICE BRAN	---	1	---	1	---	---	---	---	---	---	---	---	2
WHEAT BRAN	---	---	---	---	3	1	---	---	---	---	---	---	4
MIDDINGS	426	269	334	190	266	451	218	206	159	429	296	352	3,596
MILLRUN	392	412	436	506	328	734	286	199	236	361	188	355	4,433
MISC. MILL FEEDS	53	34	75	50	4	66	4	3	---	65	62	---	416
COPRA MEAL	675	285	175	350	---	325	550	650	405	645	225	455	4,740
COTTONSEED MEAL	650	233	225	279	494	378	57	236	466	400	281	430	4,129
LINSEED MEAL	---	---	---	---	1	---	---	---	---	---	2	---	3
SOYBEAN MEAL	824	879	475	522	827	1,541	532	170	330	502	540	1,117	8,259
FISH MEAL	---	20	---	15	1	11	---	---	15	1	30	15	108
MEAT AND BONE MEAL	105	4	3	6	1	10	1	2	4	5	---	5	146
WHEY	1	7	7	20	5	3	---	1	2	7	1	9	63
ALFALFA MEAL 3/	672	281	261	364	783	518	313	254	587	411	758	627	5,829
BEET PULP	250	74	298	282	205	154	---	15	---	---	---	15	1,293
TOTAL FEEDSTUFFS	4,048	2,499	2,289	2,585	2,918	4,192	1,961	1,736	2,204	2,826	2,383	3,380	33,021
TOTAL ALL FEEDS:													
1958	10,954	8,029	6,759	7,319	9,482	12,322	5,732	5,359	7,710	8,319	6,875	9,478	98,338
1957	9,940	5,603	9,927	6,878	9,695	6,123	9,055	9,233	7,696	8,776	7,884	9,862	100,667
1956	7,196	6,250	9,001	10,488	8,938	9,138	8,251	7,196	8,217	8,426	9,110	8,178	100,434
1955	7,118	9,410	9,296	4,650	8,402	8,348	7,921	8,917	8,539	9,232	7,038	9,048	97,919
1954	8,767	6,921	8,992	10,313	6,547	8,031	9,376	9,593	7,891	8,611	6,777	8,974	100,793

1/ ROLLED, GROUND, AND WHOLE.
 2/ CRACKED, GROUND, AND WHOLE.
 3/ INCLUDING PELLETS.
 4/ INCLUDING CALF FEED.

TABLE 29.--FEED GRAINS AND FEEDSTUFFS: IMPORTS FROM FOREIGN COUNTRIES, BY MONTHS, 1958 1/

COMMODITY	JAN.	FEB.	MAR.	APR.	MAY	JUNE	JULY	AUG.	SEPT.	OCT.	NOV.	DEC.	TOTAL
	T O N S												
COPRA MEAL	675	285	175	350	---	325	550	650	405	645	225	455	4,740
FISH MEAL	---	20	---	15	---	---	---	---	15	---	30	---	80
MISC. MILL FEEDS.....	50	30	60	40	---	60	---	---	---	60	60	---	360
TOTAL	725	335	235	405	---	385	550	650	420	705	315	455	5,180

1/ DATA INCLUDED IN TABLES 27 AND 28. FISH MEAL IS FROM CANADA; OTHERS ARE FROM THE ORIENT.

TABLE 30.--LIVESTOCK: INSHIPMENTS FROM ALL SOURCES, BY MONTHS, 1958, TOTALS 1954-57 1/

ITEM	JAN.	FEB.	MAR.	APR.	MAY	JUNE	JULY	AUG.	SEPT.	OCT.	NOV.	DEC.	1958	1957	1956	1955	1954
	NUMBER OF HEAD																
BEEF CATTLE	1,759	2,545	2,500	1,800	1,931	2,038	2,139	2,109	2,116	2,716	2,064	1,526	25,243	134	172	96	127
DAIRY COWS.....	116	138	185	226	233	326	390	498	276	198	126	64	2,776	2,647	2,117	1,757	1,414
DAIRY BULLS.....	---	1	1	3	---	---	---	---	1	2	4	5	17	8	9	4	6
Hogs 2/.....	---	95	52	102	---	---	90	---	62	638	25	738	1,802	1,034	478	981	1
GOATS	19	---	13	---	27	7	35	---	1	2	---	45	149	---	426	---	1

1/ UNLESS OTHERWISE SPECIFIED SHIPMENTS WERE FROM THE U.S. MAINLAND. BREEDING STOCK ARE INCLUDED.

2/ EMBARGO ON IMPORTS WERE IN EFFECT FROM JULY 24, 1952 TO SEPTEMBER 13, 1954.

TABLE 29.--FEED GRAINS AND FEEDSTUFFS: IMPORTS FROM FOREIGN COUNTRIES, BY MONTHS, 1958 1/

COMMODITY	JAN.	FEB.	MAR.	APR.	MAY	JUNE	JULY	AUG.	SEPT.	OCT.	NOV.	DEC.	TOTAL
	T O N S												
COPRA MEAL	675	285	175	350	---	325	550	650	405	645	225	455	4,740
FISH MEAL	---	20	---	15	---	---	---	---	15	---	30	---	80
MISC. MILL FEEDS.....	50	30	60	40	---	60	---	---	---	60	60	---	360
TOTAL	725	335	235	405	---	385	550	650	420	705	315	455	5,180

1/ DATA INCLUDED IN TABLES 27 AND 28. FISH MEAL IS FROM CANADA; OTHERS ARE FROM THE ORIENT.

TABLE 30.--LIVESTOCK: INSHIPMENTS FROM ALL SOURCES, BY MONTHS, 1958, TOTALS 1954-57 1/

ITEM	JAN.	FEB.	MAR.	APR.	MAY	JUNE	JULY	AUG.	SEPT.	OCT.	NOV.	DEC.	1958	1957	1956	1955	1954
	NUMBER OF HEAD																
BEEF CATTLE	1,759	2,545	2,500	1,800	1,931	2,038	2,139	2,109	2,116	2,716	2,064	1,526	25,243	134	172	96	127
DAIRY COWS.....	116	138	185	226	233	326	390	498	276	198	126	64	2,776	2,647	2,117	1,757	1,414
DAIRY BULLS.....	---	1	1	3	---	---	---	---	1	2	4	5	17	8	9	4	6
Hogs 2/.....	---	95	52	102	---	---	90	---	62	638	25	738	1,802	1,034	478	981	1
GOATS	19	---	13	---	27	7	35	---	1	2	---	45	149	---	426	---	1

1/ UNLESS OTHERWISE SPECIFIED SHIPMENTS WERE FROM THE U.S. MAINLAND. BREEDING STOCK ARE INCLUDED.

2/ EMBARGO ON IMPORTS WERE IN EFFECT FROM JULY 24, 1952 TO SEPTEMBER 13, 1954.

COOPERATIVE CROP AND LIVESTOCK REPORTING SERVICE, TERRITORY OF HAWAII

AGRICULTURAL MARKETING SERVICE
U.S. DEPARTMENT OF AGRICULTURE

AGRICULTURAL EXTENSION SERVICE
UNIVERSITY OF HAWAII

July 14, 1959

E R R A T A

The following corrections should be made in the Statistics of Hawaiian Agriculture, 1958, page 37, Table 30:

TABLE 30.--LIVESTOCK: INSHIPMENTS FROM ALL SOURCES, BY MONTHS, 1958, TOTALS 1954-57 ^{1/}

ITEM	JAN.	FEB.	MAR.	APR.	MAY	JUNE	JULY	AUG.	SEPT.	OCT.	NOV.	DEC.	1958
	<u>NUMBER OF HEAD</u>												
BEEF CATTLE	-	31	10	-	-	4	-	-	41	93	20	1	200
DAIRY COWS	35	84	142	152	101	255	327	439	246	174	84	41	2,080
DAIRY BULLS	-	-	-	2	-	-	-	-	1	2	-	1	6
Hogs ^{2/}	-	-	2	-	-	-	-	-	-	637	4	723	1,366

^{1/} UNLESS OTHERWISE SPECIFIED SHIPMENTS WERE FROM THE U.S. MAINLAND. BREEDING STOCK ARE INCLUDED.
^{2/} EMBARGO ON IMPORTS WERE IN EFFECT FROM JULY 24, 1952 TO SEPTEMBER 13, 1954.

TABLE 31.--HATCHING EGGS AND CHICKS: INSHIPMENTS FROM ALL SOURCES, BY MONTHS, 1954-58 1/

YEAR	JAN.	FEB.	MAR.	APR.	MAY	JUNE	JULY	AUG.	SEPT.	OCT.	NOV.	DEC.	TOTAL
<u>HATCHING EGGS--DOZENS</u>													
1954	15,000	13,800	16,500	15,600	14,900	5,700	3,300	7,000	2,500	4,600	10,300	10,800	122,000
1955	16,600	14,900	16,600	13,400	12,500	8,600	7,600	7,600	5,800	7,400	8,800	8,900	128,700
1956	18,700	12,100	14,900	13,100	16,300	11,000	10,300	9,100	6,300	17,000	13,900	12,100	154,800
1957	13,500	11,100	14,100	15,600	11,500	11,500	10,900	12,100	11,400	11,200	10,200	13,100	146,200
1958	11,500	11,000	7,200	11,400	9,600	10,700	9,600	13,000	13,200	11,700	11,400	14,200	134,500
5-YEAR AVERAGE	15,100	12,600	14,300	13,800	13,000	9,500	8,300	9,700	7,800	10,400	10,900	11,800	137,200
<u>CHICKS--NUMBER</u>													
1954	35,400	36,300	40,600	38,400	36,000	32,400	62,900	76,200	72,200	70,800	38,700	24,800	564,700
1955	20,800	24,100	29,700	27,500	33,500	38,500	25,700	47,600	53,400	53,900	47,200	33,700	435,600
1956	39,500	38,600	28,900	23,700	43,200	22,400	35,600	47,300	50,700	42,000	12,200	23,700	407,800
1957	22,200	45,300	38,400	38,400	27,500	21,700	26,600	29,500	33,100	35,400	16,400	23,100	357,600
1958	25,500	31,000	24,400	30,700	31,000	29,100	39,200	34,500	34,200	28,400	19,000	21,400	348,400
5-YEAR AVERAGE	28,700	35,100	32,400	31,800	34,200	28,800	38,000	47,000	48,700	46,100	26,700	25,300	422,800

1/ UNLESS OTHERWISE SPECIFIED, SHIPMENTS WERE FROM THE U. S. MAINLAND.
SOURCE: TERRITORIAL BOARD OF AGRICULTURE AND FORESTRY.

TABLE 32.—SPECIFIED DAIRY AND POULTRY PRODUCTS, AND MEATS: INSHIPMENTS FROM ALL SOURCES, BY DESTINATION, 1958, TOTALS 1954-57 ^{1/}

COMMODITY	DESTINATION				TOTAL RECEIPTS				
	HAWAII	KAUAI	MAUI	OAHU	1958 ^{2/}	1957	1956	1955	1954
	1,000 POUNDS	1,000 POUNDS	1,000 POUNDS	1,000 POUNDS	1,000 POUNDS	1,000 POUNDS	1,000 POUNDS	1,000 POUNDS	1,000 POUNDS
DAIRY PRODUCTS AND OLEOMARGARINE									
BUTTER, TABLE	245	107	144	2,383	2,879 ^{3/}	2,404	2,490	2,665	2,515
BUTTER, FOR MFR.	26	5	22	956	1,009	1,410	1,117	1,339	968
CHEESE	94	43	58	1,633	1,828 ^{4/}	1,751	1,570	1,624	1,407
OLEOMARGARINE	202	78	141	2,205	2,626	2,768	2,539	2,396	2,265
MEATS: ^{5/}									
BEEF AND VEAL:									
FROM THE MAINLAND	231	173	123	9,930	10,457	14,768	15,919	13,738	14,087
FROM FOREIGN COUNTRIES	---	---	---	6,043	6,043	3,194	1,681	1,706	1,061
TOTAL	231	173	123	15,973	16,500	17,962	17,600	15,444	15,098
PORK: ^{6/}									
FROM THE MAINLAND	436	177	313	5,753	6,679	6,578	7,422	6,253	5,291
FROM FOREIGN COUNTRIES	---	---	---	95 ^{4/}	95	38	188	260	340
TOTAL	436	177	313	5,848	6,774	6,616	7,610	6,513	5,631
LAMB AND MUTTON:									
FROM THE MAINLAND	9	4	---	653	666	859	991	856	672
FROM FOREIGN COUNTRIES	---	---	---	512 ^{5/}	512	268	94	43	414
TOTAL	9	4	---	1,165	1,178	1,127	1,085	899	1,086
TOTAL MEATS:									
FROM THE MAINLAND	676	354	436	16,336	17,802	22,205	24,332	20,847	20,000
FROM FOREIGN COUNTRIES	---	---	---	6,650	6,650	3,500	1,963	2,009	1,815
TOTAL	676	354	436	22,986	24,452	25,705	26,295	22,856	21,815
POULTRY PRODUCTS									
CHICKENS, DRESSED ^{7/}	409	182	278	4,550	5,419	5,283	4,610	3,590	3,454
TURKEYS, DRESSED ^{7/}	191	61	52	2,225	2,529	2,250	2,502	1,942	1,521
	30-DOZ. CASES	30-DOZ. CASES	30-DOZ. CASES	30-DOZ. CASES	30-DOZ. CASES	30-DOZ. CASES	30-DOZ. CASES	30-DOZ. CASES	30-DOZ. CASES
EGGS, SHELL	340	---	469	74,873	75,702	76,796	83,829	97,366	93,041

^{1/} SHIPMENTS ARE FROM THE U. S. MAINLAND, UNLESS OTHERWISE SPECIFIED.

^{2/} INCLUDING THE FOLLOWING QUANTITIES RECEIVED UNDER THE COMMODITY DISTRIBUTION PROGRAM OF THE AGRICULTURAL MARKETING SERVICE, U.S.D.A. (1,000 POUNDS): BUTTER, 368 AND TURKEYS, 167.

^{3/} INCLUDING 318,000 POUNDS FROM AUSTRALIA AND NEW ZEALAND.

^{4/} INCLUDING 23,000 POUNDS FROM AUSTRALIA AND NEW ZEALAND.

^{5/} FROZEN AND CHILLED CARCASSES AND CUTS ONLY; CANNED, SMOKED, CURED, OR PROCESSED MEATS AND EDIBLE OFFAL ARE NOT INCLUDED.

^{6/} LIVE HOGS SHIPPED FROM THE MAINLAND AND SLAUGHTERED IN THE TERRITORY ARE NOT INCLUDED.

^{7/} EVISCERATED AND N.Y. DRESSED, 1954-57; EVISCERATED, 1958.

TABLE 33.--SHIPMENTS OF SPECIFIED AGRICULTURAL PRODUCTS TO THE U. S. MAINLAND, BY MONTHS

COMMODITY AND YEAR		FRESH PAPAYAS AND PINEAPPLES, 1954-58 ^{1/}												
		JAN.	FEB.	MAR.	APR.	MAY	JUNE	JULY	AUG.	SEPT.	OCT.	NOV.	DEC.	TOTAL
		1,000 POUNDS												
PAPAYAS:	1954	123	139	117	121	248	210	201	97	153	124	178	142	1,853
	1955	74	132	74	77	94	42	43	21	17	25	164	192	955
	1956	104	56	152	138	186	101	124	62	76	184	152	233	1,568
	1957	213	228	176	297	303	295	127	140	93	142	186	257	2,457
	1958	244	391	306	70	132	212	177	157	143	187	224	187	2,430
PINEAPPLES:	1954	552	371	635	1,136	707	522	490	548	453	633	497	494	7,038
	1955	354	588	1,059	1,253	1,093	1,030	662	558	549	631	668	851	9,296
	1956	670	871	1,264	1,762	1,371	883	636	741	587	1,246	1,151	790	11,972
	1957	806	1,295	1,808	2,011	1,291	787	992	707	798	780	892	951	13,118
	1958	1,107	981	2,554	1,190	1,531	876	1,133	1,143	960	902	1,120	978	14,475
YEAR		FLORAL MATERIAL, 1954-58												
		1,000 PACKAGES												
	1954	27	32	51	90	67	24	36	36	31	37	37	49	517
	1955	26	29	31	45	50	41	35	44	44	37	34	45	461
	1956	36	17	41	34	58	38	35	39	35	33	33	51	450
	1957	29	31	35	50	53	27	28	32	26	27	23	39	400
	1958	19	18	21	44	45	29	33	33	36	42	32	58	410
COMMODITY		FRESH VEGETABLES AND ROOT PRODUCTS, 1958												
		1,000 POUNDS												
DASHEENS		---	1	---	---	---	2	2	7	8	4	3	1	28
GINGER ROOT		23	22	23	19	8	7	2	1	9	11	28	27	180
LOTUS ROOT		10	11	10	1	---	---	7	16	29	18	25	18	145
YAM BEAN ROOT		---	---	2	3	5	3	2	---	---	---	---	---	15
MISC. VEGETABLES		---	---	1	1	2	1	1	1	1	1	1	---	10

SEE FOOTNOTES AT END OF TABLE, PAGE 42.

CONTINUED

10

Table 33.--Shipments of specified agricultural products to the U. S. Mainland,
1954-58--Continued

Commodity	Unit	Processed fruits, vegetables, miscellaneous crops and animal products				
		1958	1957	1956	1955	1954
Fruits						
Guavas:						
Puree, juice, and nectar base, frozen/chilled	Pounds	54,000	133,000	99,000	101,000	53,000
Nectar, canned	do.	276,000	302,000	251,000	221,000	207,000
Jams and jellies	do.	31,000	33,000	40,000	30,000	25,000
Papayas:						
Puree, juice, and nectar base, frozen/chilled	do.	98,000	188,000	140,000	103,000	66,000
Nectar, canned	do.	764,000	970,000	752,000	770,000	695,000
Balls, chunks and slices, canned	do.	159,000	196,000	175,000	154,000	136,000
Passion fruit:						
Juice and nectar base, frozen/chilled	do.	407,000	925,000	699,000	147,000	35,000
Miscellaneous:						
Nectars, canned ^{2/}	do.	111,000	148,000	154,000	82,000	62,000
Jams, jellies and preserves ^{3/}	do.	35,000	19,000	26,000	21,000	31,000
Vegetables						
Pickled	do.	487,000	444,000	408,000	350,000	281,000
Nuts						
Coconuts:						
Chips, prepared	do.	38,000	57,000	68,000	64,000	63,000
Milk, frozen	do.	9,000	5,000	5,000	3,000	1,000
In shell	Nuts	4/	54,000	18,000	26,000	35,000
Shredded, frozen	Pounds	7,000	7,000	8,000	8,000	7,000
Syrup	do.	5,000	7,000	11,000	9,000	5,000
Macadamia nuts, processed	do.	114,000	92,000	82,000	47,000	40,000

Continued

Table 33.--Shipments of specified agricultural products to the U. S. Mainland, 1954-58--Continued

Commodity	Unit	Processed fruits, vegetables, miscellaneous crops and animal products--Continued				
		1958	1957	1956	1955	1954
<u>Other</u>						
Coffee, green	Pounds	11,690,000	9,004,000	9,237,000	6,705,000	6,693,000
Coffee, roasted	do.	7,000	7,000	7,000	6,000	7,000
Poi, fresh	do.	97,000	86,000	68,000	55,000	37,000
Poi, bottled and canned	do.	16,000	10,000	18,000	14,000	15,000
<u>Animal products</u>						
Hides:						
Cattle	Number	44,000	38,000	41,000	42,000	26,000
Sheep	do.	400	400	1,000	3,000	2,000
Tallow	Pounds	22,000	132,000	201,000	26,000	9,000
Honey, extracted	do.	81,000	99,000	119,000	175,000	88,000
Beeswax	do.	5,000	8,000	10,000	5,000	3,000

1/ BULK AND GIFT SHIPMENTS BY COMMERCIAL SHIPPERS.
 2/ PAPAYA-PINEAPPLE, PAPAYA-PASSION FRUIT, PASSION FRUIT AND OTHER MISCELLANEOUS NECTARS.
 3/ MANGO CHUTNEY AND PRESERVES; PAPAYA PRESERVES; PAPAYA-PINEAPPLE JAMS AND PRESERVES; PASSION FRUIT JELLY; PINEAPPLE JAMS, PRESERVES, CHUTNEY AND PICKLES; POHA JAMS AND PRESERVES; AND MISCELLANEOUS SYRUPS AND TOPPING.
 4/ DATA NOT AVAILABLE.

SECTION IV DIVERSIFIED CROPS

Table 34.--Vegetables and fruits: Production and marketings, 1949-58 1/

Year	Total production 2/			Marketings including exports 3/			Marketings excluding exports 4/		
	Vegetables and melons	Fruits	Total	Vegetables and melons	Fruits	Total	Vegetables and melons	Fruits	Total
	1,000 <u>pounds</u>	1,000 <u>pounds</u>	1,000 <u>pounds</u>	1,000 <u>pounds</u>	1,000 <u>pounds</u>	1,000 <u>pounds</u>	1,000 <u>pounds</u>	1,000 <u>pounds</u>	1,000 <u>pounds</u>
1947-49.....	47,025	16,202	63,227	47,025	16,202	63,227	47,025	16,192	63,217
1949.....	46,285	13,650	59,935	46,285	13,650	59,935	46,285	13,622	59,907
1950.....	46,095	15,250	61,345	45,714	13,745	59,459	45,714	13,459	59,173
1951.....	45,490	13,400	58,890	44,119	13,365	57,484	44,119	13,052	57,171
1952.....	48,250	15,750	64,000	47,080	15,700	62,780	47,080	15,369	62,449
1953.....	47,150	18,285	65,435	46,700	18,065	64,765	46,700	17,291	63,991
1954 5/.....	46,125	18,815	64,940	45,475	18,570	64,045	45,475	16,717	62,192
1955 5/.....	51,860	17,730	69,590	50,623	17,695	68,318	50,185	16,740	66,925
1956.....	47,245	19,010	66,255	46,525	19,010	65,535	46,067	17,442	63,509
1957.....	48,730	23,850	72,580	47,733	23,075	70,808	47,286	20,618	67,904
1958.....	50,585	24,405	74,990	49,270	23,532	72,802	48,917	21,102	70,019

1/ PINEAPPLES, MANGOS, LITCHEE, PASSION FRUIT, GUAVAS, PLUMS, GRAPES AND PERSIMMONS EXCLUDED BECAUSE OF INCOMPLETE DATA.

2/ ALL COMMERCIAL PRODUCTION, INCLUDING EXPORTS AND LOSSES RESULTING FROM MARKET CONDITIONS.

3/ ALL COMMERCIAL PRODUCTION, EXCLUDING LOSSES RESULTING FROM MARKET CONDITIONS.

4/ ALL COMMERCIAL PRODUCTION, EXCLUDING EXPORTS AND LOSSES RESULTING FROM MARKET CONDITIONS.

5/ MOLOKAI NOT INCLUDED.

Table 35.--Vegetables, fruits, and miscellaneous crops: Acreage, production, and wholesale value of marketings, Territory average 1952-56, annual 1957-58

Commodity	Acreage 1/			Production 2/			Value 3/		
	Average 1952-56 1/2	1957	1958	Average 1952-56 1/2	1957	1958	Average 1952-56 1/2	1957	1958
	Acres			1,000 pounds			1,000 dollars		
Vegetables and melons									
Beans, snap	225	162	139	2,098	1,890	1,860	319	350	339
Broccoli	56	48	42	349	385	345	62	72	69
Burdock	42	48	44	655	610	535	122	118	125
Cabbage, head	514	500	468	8,241	8,170	8,305	356	387	377
Cabbage, Chinese	348	213	213	3,627	2,600	2,990	377	262	267
Cabbage, mustard		83	84		895	1,185		95	119
Carrots	95	59	52	958	655	645	62	52	53
Cauliflower	42	40	45	394	485	535	54	59	57
Celery	36	56	29	980	1,675	1,080	108	173	130
Corn, green	344	378	292	1,176	1,095	850	90	85	65
Cucumbers	306	280	258	3,570	3,590	3,720	384	446	454
Daikon	315	342	334	3,808	3,610	3,735	172	207	234
Dasheens	20	19	15	353	325	315	57	69	61
Eggplant	40	41	42	667	865	845	67	100	110
Ginger root	11	8	5	460	270	180	120	74	67
Lettuce	316	365	350	3,184	3,285	3,605	357	386	435
Lotus root	60	68	66	420	375	370	106	90	86
Onions, dry	83	111	125	861	1,440	1,895	67	115	152
Onions, green	40	65	48	508	695	690	74	107	116
Peppers, sweet	84	75	83	865	1,090	1,295	150	199	241
Potatoes	110	87	55	698	580	440	52	39	40
Pumpkins	30	10	20	282	165	310	16	12	19
Squash, Italian	15	12	11	239	235	160	30	30	18
Sweetpotatoes	166	113	117	1,494	1,310	1,510	117	119	134
Tomatoes	468	386	424	5,837	5,870	6,455	835	915	984
Watercress	24	27	30	2,334	3,110	3,050	253	435	506
Cantaloups	---	29	28	---	190	240	---	34	41
Watermelons	540	365	316	3,696	3,265	3,440	323	333	325
Total vegetables and melons	4,334	3,990	3,735	47,754	48,730	50,585	4,733	5,363	5,624

<u>Fruits</u>									
<u>Avocados:</u>									
Bearing	166	180	182	1,002	1,040	1,225	83	85	82
Non-bearing	16	28	29	---	---	---	---	---	---
<u>Bananas: 5/</u>									
Bearing	889	903	899	6,972	6,965	6,965	495	445	496
Non-bearing	78	131	143	---	---	---	---	---	---
<u>Oranges:</u>									
Bearing	24	24	29	234	325	350	13	20	23
Non-bearing	1	6	3	---	---	---	---	---	---
<u>Papayas:</u>									
Bearing	402	543	610	9,368	15,040	15,365	598	802	819
Non-bearing	216	310	226	---	---	---	---	---	---
<u>Tangerines:</u>									
Bearing	22	26 6/	28	282	480	500	40	63	54
Non-bearing	1	4 6/	6	---	---	---	---	---	---
Total fruits	1,817	2,155 6/	2,155	17,858	23,850	24,405	1,230	1,415	1,474
Total vegetables, melons and fruits	6,151	6,145 6/	5,890	65,612	72,580	74,990	5,963	6,778	7,098
<u>Miscellaneous crops</u>									
<u>Coffee: 7/</u>									
Bearing	3,818	5,000	5,734	8,566	8,809	14,497	5,142	5,823	7,243
Non-bearing	814	1,516 6/	1,055	---	---	---	---	---	---
<u>Macadamia nuts: 8/</u>									
Bearing	1,305	1,690	1,805	961	1,343	1,836	168	248	339
Non-bearing	1,359	1,262 6/	1,256	---	---	---	---	---	---
Rice 9/	186	125	91	584	410	327	98	66	53
Taro	666	618	586	10,458	10,285	9,565	462	500	489
Total misc. crops	8,148	10,211 6/	10,527	20,569	20,847	26,225	5,870	6,637	8,124
Total diversified crops	14,299	16,356 6/	16,417	86,181	93,427	101,215	11,833	13,415	15,222

1/ ACREAGE OF TREE FRUITS, LOTUS ROOT, TARO, AND WATERCRESS IS AVERAGE ACREAGE FOR YEAR. ACREAGE OF MELONS, OTHER VEGETABLES AND RICE IS PLANTINGS HARVESTED DURING THE YEAR. ACREAGE OF COFFEE AND MACADAMIA NUTS IS THAT AT END OF YEAR. 2/ PRODUCTION IS ESTIMATED FROM RECORDED MARKETINGS WITH ADJUSTMENTS FOR DIRECT SALES TO RETAILERS OR CONSUMERS BY FARMERS. LOSSES RESULTING FROM MARKET GLUTS ARE INCLUDED IN THE PRODUCTION ESTIMATES. 3/ VALUE IS CALCULATED AT AVERAGE WHOLESALE PRICES OF MARKETINGS ON ISLAND OF ORIGIN. NO VALUE IS CALCULATED FOR QUANTITIES NOT HARVESTED BECAUSE OF MARKET CONDITIONS. FOR 1958, THE FOLLOWING QUANTITIES AND CROPS WERE NOT MARKETED (1,000 POUNDS): HEAD CABBAGE, 675; CHINESE CABBAGE, 130; CAULIFLOWER, 90; CELERY 5; CUCUMBERS, 215; PEPPERS, 10; SWEETPOTATOES, 90; TOMATOES, 100; AVOCADOS, 185; BANANAS, 275; PAPAYAS, 383; TANGERINES, 30; AND MACADAMIA NUTS, 4. 4/ MOLOKAI NOT INCLUDED. 5/ INCLUDING COOKING BANANAS. 6/ REVISED. 7/ CROP YEAR ENDING JUNE 30 OF YEAR GIVEN FOR PRODUCTION AND VALUE; GREEN BASIS. 8/ PRODUCTION AND VALUE ARE IN-SHELL BASIS. 9/ PRODUCTION AND VALUE ARE MILLED BASIS.

TABLE 36.--VEGETABLES, FRUITS, AND MISCELLANEOUS CROPS: ACREAGE, PRODUCTION, AND WHOLESALE VALUE OF MARKETINGS, BY ISLANDS, 1958

COMMODITY	HAWAII			KAUAI			MAUI			MOLOKAI			OAHU		
	ACREAGE ^{1/}	PRODUCTION ^{2/}	VALUE ^{3/}	ACREAGE ^{1/}	PRODUCTION ^{2/}	VALUE ^{3/}	ACREAGE ^{1/}	PRODUCTION ^{2/}	VALUE ^{3/}	ACREAGE ^{1/}	PRODUCTION ^{2/}	VALUE ^{3/}	ACREAGE ^{1/}	PRODUCTION ^{2/}	VALUE ^{3/}
	ACRES	1,000 POUNDS	1,000 DOLLARS	ACRES	1,000 POUNDS	1,000 DOLLARS	ACRES	1,000 POUNDS	1,000 DOLLARS	ACRES	1,000 POUNDS	1,000 DOLLARS	ACRES	1,000 POUNDS	1,000 DOLLARS
VEGETABLES AND MELONS															
BEANS, SNAP	31	240	39	9	135	27	17	210	37	---	---	---	82	1,275	236
BROCCOLI	13	115	22	---	---	---	4	30	6	---	---	---	25	200	41
BURDOCK	44	535	125	---	---	---	---	---	---	---	---	---	---	---	---
CABBAGE, HEAD	100	1,090	50	14	225	16	333	6,665	291	---	---	---	21	325	20
CABBAGE, CHINESE	94	1,250	98	4	50	8	51	920	82	---	---	---	64	770	79
CABBAGE, MUSTARD	3	40	3	---	---	---	4	40	4	---	---	---	77	1,105	112
CARROTS	20	235	18	---	---	---	32	410	35	---	---	---	---	---	---
CAULIFLOWER	---	---	---	---	---	---	45	535	57	---	---	---	---	---	---
CELERY	10	325	41	---	---	---	3	85	10	---	---	---	16	670	79
CORN, GREEN	25	125	8	---	---	---	21	80	5	29	60	5	217	585	47
CUCUMBERS	57	960	98	53	815	106	33	485	62	2	20	3	113	1,440	185
DAIKON	258	2,235	116	---	---	---	3	50	3	---	---	---	73	1,450	115
DASHEENS	15	315	61	---	---	---	---	---	---	---	---	---	---	---	---
EGGPLANT	6	75	12	3	65	11	5	75	8	2	40	3	26	590	76
GINGER ROOT	5	180	67	---	---	---	---	---	---	---	---	---	---	---	---
LETTUCE	199	1,715	204	---	---	---	44	435	55	---	---	---	107	1,455	176
LOTUS ROOT	---	---	---	---	---	---	---	---	---	---	---	---	66	370	86
ONIONS, DRY	---	---	---	---	---	---	120	1,820	144	---	---	---	5	75	8
ONIONS, GREEN	6	45	6	---	---	---	---	---	---	---	---	---	42	645	110
PEPPERS, SWEET	8	125	21	13	320	64	28	300	56	---	---	---	34	550	100
POTATOES	6	50	4	---	---	---	49	390	36	---	---	---	---	---	---
PUMPKINS	---	---	---	---	---	---	20	310	19	---	---	---	---	---	---
SQUASH, ITALIAN	11	160	18	---	---	---	---	---	---	---	---	---	---	---	---
SWEETPOTATOES	47	495	33	11	160	14	8	85	6	---	---	---	51	770	81
TOMATOES	111	1,165	176	43	1,025	169	145	2,085	322	6	95	13	119	2,085	304
WATERCRESS	---	---	---	---	---	---	---	---	---	---	---	---	30	3,050	506
CANTALOUPS	---	---	---	---	---	---	7	50	8	4	40	7	17	150	26
WATERMELONS	8	90	10	9	210	23	18	185	16	7	55	6	274	2,900	270
TOTAL VEGETABLES AND MELONS															
.....1958	1,077	11,565	1,230	159	3,005	438	990	15,245	1,262	50	310	37	1,459	20,460	2,657
.....1957	1,167	12,630	1,355	123	2,095	312	977	13,845	1,158	47	360	48	1,676	19,800	2,490
AVERAGE 1952-56	1,093	12,601	1,178	227	2,479	301	1,097	12,697	960	47	347	47	1,917	19,977	2,294
FRUITS															
AVOCADOS:															
BEARING	146	930	57	6	65	6	20	160	12	---	---	---	10	70	7
NON-BEARING	15	---	---	---	---	---	14	---	---	---	---	---	---	---	---
BANANAS: 5/															
BEARING	78	815	43	15	105	10	34	225	12	2	25	2	770	5,795	429
NON-BEARING	28	---	---	13	---	---	10	---	---	2	---	---	90	---	---

ORANGES:																
BEARING	28	350	23	---	---	---	1	---	---	---	---	---	---	---	---	
NON-BEARING	1	---	---	---	---	---	2	---	---	---	---	---	---	---	---	
PAPAYAS:																
BEARING	357	10,260	477	3	65	5	13	130	9	5	195	6	232	4,775	322	
NON-BEARING	122	---	---	2	---	---	19	---	---	3	---	---	80	---	---	
TANGERNINES:																
BEARING	28	500	54	---	---	---	---	---	---	---	---	---	---	---	---	
NON-BEARING	6	---	---	---	---	---	---	---	---	---	---	---	---	---	---	
TOTAL FRUITS	1958	809	12,855	654	39	235	21	113	515	33	12	160	8	1,182	10,640	758
	1957	713 ^{5/}	9,490	523	31	330	26	98	600	34	22	510	31	1,291	12,920	801
	AVERAGE 1952-56	392	3,742	255	19	215	14	104	622	39	^{4/}	^{4/}	^{4/}	1,302	13,279	922
TOTAL VEGETABLES, MELONS AND FRUITS																
1958	1,886	24,420	1,884	198	3,240	459	1,103	15,760	1,295	62	470	45	2,641	31,100	3,415	
1957	1,880 ^{6/}	22,120	1,878	154	2,425	338	1,075	14,445	1,192	69	870	79	2,967	32,720	3,291	
AVERAGE 1952-56	1,485	16,343	1,433	246	2,694	315	1,201	13,319	999	^{4/}	^{4/}	^{4/}	3,219	33,256	3,216	
MISCELLANEOUS CROPS																
COFFEE: ^{7/}																
BEARING	5,734	14,497	7,243	---	---	---	---	---	---	---	---	---	---	---	---	---
NON-BEARING	1,055	---	---	---	---	---	---	---	---	---	---	---	---	---	---	---
MACADAMIA NUTS: ^{8/}																
BEARING	1,486	1,641	305	106	81	14	111	11	1	2	---	---	100	103	19	
NON-BEARING	1,026	---	---	54	---	---	140	---	---	---	---	---	36	---	---	
RICE ^{9/}	---	---	---	91	327	53	---	---	---	---	---	---	---	---	---	
TARO	155	2,060	124	168	3,750	199	95	1,590	72	8	80	4	160	2,085	90	
TOTAL MISC. CROPS	1958	9,456	18,198	7,672	419	4,158	266	346	1,601	73	10	80	4	296	2,188	109
	1957	9,075 ^{5/}	12,299	6,157	455	3,750	256	337	1,770	81	13	140	6	331	2,888	137
	AVERAGE 1952-56	6,756	11,667	5,390	596	3,960	263	354	1,465	65	^{4/}	^{4/}	^{4/}	442	3,477	152
TOTAL DIVER. CROPS	1958	11,342	42,618	9,556	617	7,398	725	1,449	17,361	1,368	72	550	49	2,937	33,288	3,524
	1957	10,955 ^{6/}	34,419	8,035	609	6,175	594	1,412	16,215	1,273	82	1,010	85	3,298	35,608	3,428
	AVERAGE 1952-56	8,241	28,010	6,823	842	6,654	578	1,555	14,784	1,064	^{4/}	^{4/}	^{4/}	3,661	36,733	3,368

^{1/} ACREAGE OF TREE FRUITS, LOTUS ROOT, TARO, AND WATERCRESS IS AVERAGE ACREAGE FOR YEAR. ACREAGE OF MELONS, OTHER VEGETABLES AND RICE IS PLANTINGS HARVESTED DURING THE YEAR. ACREAGE OF COFFEE AND MACADAMIA NUTS IS THAT AT END OF YEAR.

^{2/} PRODUCTION IS ESTIMATED FROM RECORDED MARKETINGS, WITH ADJUSTMENTS FOR DIRECT SALES TO RETAILERS OR CONSUMERS BY FARMERS. LOSSES RESULTING FROM MARKET GLUTS ARE INCLUDED IN THE ESTIMATES.

^{3/} VALUE IS CALCULATED AT AVERAGE WHOLESALE PRICES OF MARKETINGS ON THE ISLAND OF ORIGIN. NO VALUE IS CALCULATED FOR QUANTITIES NOT HARVESTED BECAUSE OF MARKET CONDITIONS.

^{4/} DATA NOT AVAILABLE.

^{5/} INCLUDING COOKING BANANAS.

^{6/} REVISED.

^{7/} CROP YEAR ENDING JUNE 30 FOR PRODUCTION AND VALUE; GREEN BASIS.

^{8/} PRODUCTION AND VALUE ARE IN-SHELL BASIS.

^{9/} PRODUCTION AND VALUE ARE MILLED BASIS.

TABLE 37.—VEGETABLES, FRUITS, AND TARO: PRODUCTION, BY MONTHS, 1958

COMMODITY	JAN.	FEB.	MAR.	APR.	MAY	JUNE	JULY	AUG.	SEPT.	OCT.	NOV.	DEC.	TOTAL
1,000 POUNDS													
VEGETABLES AND MELONS													
BEANS, SNAP	140	170	145	170	210	190	155	100	120	150	140	170	1,860
BROCCOLI	28	28	28	33	38	33	33	23	20	23	22	36	345
BURDOCK	45	30	40	35	40	55	55	40	45	40	50	60	535
CABBAGE, HEAD	595	595	690	820	785	760	915	505	590	625	580	905	8,305
CABBAGE, CHINESE	292	390	275	238	271	188	231	141	162	287	247	268	2,990
CABBAGE, MUSTARD	110	73	70	85	74	65	89	119	95	145	121	139	1,185
CARROTS	35	35	40	55	75	85	80	50	50	45	50	45	645
CAULIFLOWER	35	40	70	55	40	45	90	25	20	30	25	60	535
CELERY	165	145	120	160	160	75	35	30	20	40	60	70	1,080
CORN, GREEN	58	76	61	55	63	53	83	66	88	90	90	67	850
CUCUMBERS	250	255	190	355	500	465	260	205	360	285	245	350	3,720
DAIKON	250	237	309	329	349	305	317	270	263	353	348	405	3,735
DASHEENS	20	15	20	15	20	15	35	35	25	35	30	50	315
EGGPLANT	62	74	79	79	73	76	69	65	69	62	67	70	845
GINGER ROOT	20	20	15	15	15	15	10	10	10	15	20	15	180
LETTUCE	215	265	325	445	435	335	295	250	255	325	215	245	3,605
LOTUS ROOT	45	25	20	10	5	5	15	35	55	45	55	55	370
ONIONS, DRY	55	115	170	375	470	375	195	80	30	15	10	5	1,895
ONIONS, GREEN	53	48	47	46	68	53	55	55	59	68	65	73	690
PEPPERS, SWEET	105	105	105	130	150	140	130	75	70	90	75	120	1,295
POTATOES	35	50	33	85	50	45	18	8	25	1	70	20	440
PUMPKINS	10	15	15	20	50	30	20	30	20	45	30	25	310
SQUASH, ITALIAN	5	5	25	25	20	20	5	15	5	5	15	15	160
SWEETPOTATOES	110	115	120	130	125	130	125	125	150	120	132	128	1,510
TOMATOES	360	520	580	635	785	695	771	397	269	350	483	610	6,455
WATERCRESS	270	235	270	245	225	215	235	225	285	295	300	250	3,050
CANTALOUPS	---	---	---	18	48	60	58	26	---	13	2	15	240
WATERMELONS	2	10	30	220	792	1,013	980	313	50	18	11	1	3,440
TOTAL VEGETABLES AND MELONS	3,310	3,691	3,892	4,883	5,936	5,541	5,359	3,318	3,210	3,615	3,558	4,272	50,585
FRUITS													
AVOCADOS	117	99	98	111	93	80	88	95	115	93	126	110	1,225
BANANAS	585	535	546	528	541	556	583	608	628	636	622	597	6,965
ORANGES	55	30	10	5	---	---	---	---	---	70	115	65	350
PAPAYAS	1,175	1,390	1,310	885	1,110	1,555	1,605	1,195	1,150	1,375	1,310	1,305	15,365
TANGERINES	120	55	10	3	2	---	---	---	---	20	110	180	500
TOTAL FRUITS	2,052	2,109	1,974	1,532	1,746	2,191	2,276	1,898	1,893	2,194	2,283	2,257	24,405
TARO (FOR PROCESSING)	823	726	776	772	816	816	792	821	826	823	736	836	9,565

TABLE 38.--VEGETABLES, FRUITS AND MISCELLANEOUS CROPS: ACRE-YIELDS, AVERAGE 1952-56 AND ANNUAL 1957-58

COMMODITY	TERRITORY			HAWAII			KAUAI			MAUI			MOLOKAI	OAHU		
	AVERAGE 1952-56 ^{1/}	1957	1958	AVERAGE 1952-56	1957	1958	AVERAGE 1952-56	1957	1958	AVERAGE 1952-56	1957	1958	1958	AVERAGE 1952-56	1957	1958
	1,000 POUNDS			1,000 POUNDS			1,000 POUNDS			1,000 POUNDS			1,000 POUNDS	1,000 POUNDS		
VEGETABLES AND MELONS																
BEANS, SNAP	9.4	11.7	13.4	7.7	8.9	7.7	8.0	12.5	15.0	8.3	10.9	12.4	---	10.3	12.6	15.5
BROCCOLI	6.2	8.0	8.2	5.7	7.6	8.8	---	---	---	6.2	8.0	7.5	---	6.5	8.4	8.0
BURDOCK	---	---	---	15.6	12.7	12.2	---	---	---	---	---	---	---	---	---	---
CABBAGE, HEAD	16.2	16.3	17.7	15.8	11.4	10.9	12.0	13.8	16.1	16.8	18.4	20.0	---	14.9	12.8	15.5
CABBAGE, CHINESE	---	12.2	14.0	---	13.2	13.9	---	8.8	12.5	---	14.6	18.0	---	---	9.4	12.0
CABBAGE, MUSTARD	---	10.8	14.1	---	12.5	13.3	---	---	---	---	9.0	10.0	---	---	10.8	14.4
CARROTS	---	---	---	10.1	9.8	11.8	---	---	---	10.2	12.1	12.8	---	---	---	---
CAULIFLOWER	---	---	---	---	---	---	---	---	---	9.2	12.1	11.9	---	---	---	---
CELERY	28.5	29.9	37.2	28.4	25.5	32.5	---	---	---	---	30.0	28.3	---	27.9	31.0	41.9
CORN, GREEN	3.4	2.9	2.9	4.1	4.6	5.0	---	---	---	3.1	3.3	3.8	2.1	3.4	2.7	2.7
CUCUMBERS	11.7	12.8	14.4	15.2	12.2	16.8	13.5	15.9	15.4	10.4	13.3	14.7	10.0	10.2	12.1	12.7
DAIKON	12.2	10.6	11.2	10.9	9.2	8.7	---	---	---	15.4	16.7	16.7	---	18.1	14.6	19.9
DASHEENS	---	---	---	20.4	17.1	21.0	---	---	---	---	---	---	---	---	---	---
EGGPLANT	16.8	21.1	20.1	14.5	20.8	12.5	11.6	15.0	21.7	15.2	17.5	15.0	20.0	18.8	23.0	22.7
GINGER ROOT	---	---	---	41.2	31.4	36.0	---	---	---	---	---	---	---	---	---	---
LETTUCE	10.1	9.0	10.3	8.9	7.9	8.6	---	---	---	9.8	9.7	9.9	---	13.9	11.0	13.6
LOTUS ROOT	---	---	---	---	---	---	---	---	---	---	---	---	---	7.0	5.5	5.6
ONIONS, DRY	---	---	---	---	---	---	---	---	---	10.6	12.9	15.2	---	---	15.0	15.0
ONIONS, GREEN	---	---	---	10.2	6.4	7.5	---	---	---	---	---	---	---	13.6	11.2	15.4
PEPPERS, SWEET	10.3	14.5	15.6	10.0	12.0	15.6	9.4	31.0	24.6	9.5	13.0	10.7	---	11.0	11.4	16.2
POTATOES	---	---	---	7.4	7.9	8.3	---	8.3	---	5.6	6.5	8.0	---	---	---	---
PUMPKINS	---	---	---	---	---	---	---	---	---	9.1	16.5	15.5	---	---	---	---
SQUASH, ITALIAN	---	---	---	16.0	19.6	14.5	---	---	---	---	---	---	---	---	---	---
SWEETPOTATOES	9.1	11.6	12.9	8.9	10.4	10.5	7.7	13.9	14.5	8.0	10.7	10.6	---	9.8	12.1	15.1
TOMATOES	12.5	15.2	15.2	13.2	14.5	10.5	12.7	18.0	23.8	11.2	14.6	14.4	15.8	12.9	15.9	17.5
WATERCRESS	---	---	---	---	---	---	---	---	---	---	---	---	---	101.0	115.2	101.7
CANTALOUPS	---	---	---	---	---	---	---	---	---	---	8.6	7.1	10.0	---	5.0	8.8
WATERMELONS	6.9	8.9	10.9	9.2	9.0	11.2	14.9	20.0	23.3	5.7	8.8	10.3	7.9	6.6	8.6	10.6
FRUITS 2/																
AVOCADOS	6.2	5.8	6.7	5.7	5.4	6.4	7.5	10.0	10.8	8.7	6.9	8.0	---	---	7.0	7.0
BANANAS	7.8	7.7	7.7	10.6	9.8	10.6	11.0	10.0	7.0	7.4	8.3	6.6	12.5	7.7	7.5	7.5
ORANGES	---	---	---	9.7	13.5	12.5	---	---	---	---	---	---	---	---	---	---
PAPAYAS	23.0	27.7	25.2	21.5	32.7	28.7	21.2	21.7	21.7	11.4	10.0	10.0	27.0	23.9	24.9	20.6
TANGERINES	---	---	---	12.8	18.5 ^{3/}	17.9	---	---	---	---	---	---	---	---	---	---
MISCELLANEOUS CROPS																
COFFEE 2/	---	---	---	2.3	1.8	2.5	---	---	---	---	---	---	---	---	---	---
MACADAMIA NUTS 2/ 4/	0.8	0.8	1.0	0.7	0.8	1.1	1.2	0.9	0.8	1.0	0.2	0.1	---	1.1	1.2	1.0
RICE 5/	---	---	---	---	---	---	3.2	3.3	3.6	---	---	---	---	---	---	---
TARO	15.6	16.6	16.3	16.4	14.1	13.3	20.2	18.9	22.3	17.4	20.3	16.7	10.0	12.9	15.4	13.0

1/ MOLOKAI NOT INCLUDED. 2/ BEARING ACRE-YIELD. 3/ REVISED. 4/ IN-SHELL BASIS. 5/ MILLED BASIS.

SECTION V LIVESTOCK

TABLE 39.—BEEF CATTLE: ACREAGE GRAZED, NUMBER ON RANCHES, SLAUGHTER, AND CARCASS VALUE, 1949-58 1/

YEAR	ACREAGE USED FOR PASTURE 2/	CATTLE ON RANCHES 2/	ANNUAL SLAUGHTER 3/			RATIO OF SLAUGHTER TO NUMBER ON RANCHES
			NUMBER	DRESSED WEIGHT	VALUE 4/	
	1,000 ACRES	HEAD	HEAD	1,000 POUNDS	1,000 DOLLARS	PERCENT
1949	1,440	141,200	33,640	16,171	7,068	24
1950	1,400	142,200	29,470	14,682	7,221	21
1951	1,450	146,900	33,400	16,801	8,450	23
1952	1,455	147,300	33,650	16,915	8,067	23
1953	1,478	155,300	30,030	13,983	6,121	19
1954	1,357	152,300	34,350	16,895	6,965	23
1955	1,044	158,900	36,430	19,379	7,796	23
1956	1,022	156,800	38,030	19,885	7,734	24
1957	1,008	160,500	39,730	21,112	8,475	25
1958	1,019	162,100	43,260	21,965	9,750	27

1/ RANCHES WITH HERDS OF 20 HEAD OR MORE, UNLESS OTHERWISE INDICATED.

2/ DECEMBER 31 FOR 1949-55; JANUARY 1 FOLLOWING YEAR FOR 1956-58.

3/ 1954-58 DATA INCLUDE SLAUGHTER FROM ALL RANCHES, REGARDLESS OF SIZE.

4/ SALES BY SLAUGHTERHOUSES, INCLUDING OFFAL, HIDE, AND TALLOW.

TABLE 40.—BEEF CATTLE: RANCHES AND NUMBERS, JANUARY 1, 1959 AND SLAUGHTER AND CARCASS VALUE, BY ISLANDS, 1958 1/

ISLAND	RANCHES	ACREAGE USED	CATTLE ON RANCHES	ANNUAL SLAUGHTER 2/			RATIO OF SLAUGHTER TO NUMBER ON RANCHES
				NUMBER	DRESSED WEIGHT	VALUE 3/	
	NUMBER	1,000 ACRES	NUMBER	HEAD	1,000 POUNDS	1,000 DOLLARS	PERCENT
HAWAII	187	635	101,400	23,510	12,390	5,457	23
KAUAI/NIIHAU	46	134	13,800	4,190	2,032	930	30
MAUI	93	158	32,000	7,440	3,646	1,664	23
MOLOKAI	12	65	5,600	950	475	203	17
OAHU	37	27	9,300	7,170	3,422	1,496	74
TERRITORY	375	1,019	162,100	43,260	21,965	9,750	27

1/ RANCHES WITH HERDS OF 20 HEAD OR MORE, UNLESS OTHERWISE INDICATED.

2/ SLAUGHTER FROM ALL RANCHES, REGARDLESS OF SIZE; INCLUDING CALVES.

3/ SALES BY SLAUGHTERHOUSES, INCLUDING OFFAL, HIDE, AND TALLOW.

TABLE 41.--DAIRIES: NUMBER OF COWS, MILK MARKETED, SLAUGHTER, AND VALUE OF PRODUCTS, 1949-58 1/

YEAR	DAIRIES 2/	MATURE DAIRY COWS 2/	MILK PRODUCTION PER COW PER DAY	VOLUME OF MARKETINGS			VALUE OF MARKETINGS		
				CATTLE 3/	DRESSED WEIGHT	TOTAL MILK	MEAT 4/	MILK 5/	TOTAL
1949	74	8,730	9.6	4,430	1,365	31,735	627	5,781	6,408
1950	75	9,900	10.1	3,390	876	35,624	383	6,449	6,832
1951	74	11,090	9.7	3,070	1,130	38,436	529	7,368	7,897
1952	75	10,750	9.5	2,620	1,384	37,242	655	7,262	7,917
1953	79	11,360	9.9	1,770	902	40,242	343	7,478	7,821
1954	85	11,120	10.0	2,030	956	40,505	290	7,500	7,790
1955	86	11,340	10.2	2,170	1,066	41,922	293	7,832	8,125
1956	89	12,570	10.5	2,810	1,541	46,788	409	8,658	9,067
1957	90	13,270	10.9	3,230	1,676	50,667	486	8,969	9,455
1958	90	13,230	11.2	3,670	2,005	52,841	652	9,329	9,981

- 1/ DAIRIES WITH HERDS OF 10 OR MORE MATURE COWS.
 2/ AUGUST 31 FOR 1949-55; JANUARY 1 FOLLOWING YEAR FOR 1956-58.
 3/ INCLUDING CALVES.
 4/ SALES BY SLAUGHTERHOUSES. INCLUDES OFFAL, HIDE, AND TALLOW.
 5/ DELIVERED BOTTLING PLANT.

TABLE 42.--DAIRIES: MILK MARKETED, SLAUGHTER, AND VALUE OF PRODUCTS, BY ISLANDS, 1958

ISLAND	VOLUME OF MARKETINGS			VALUE OF MARKETINGS		
	CATTLE AND CALVES	DRESSED WEIGHT	MILK	MEAT 1/	MILK 2/	TOTAL
HAWAII	270	138	2,558	46	443	489
KAUAI	140	69	1,731	24	327	351
MAUI	260	142	2,241	51	408	459
MOLOKAI	10	3	116	1	21	22
OAHU	2,990	1,653	46,195	530	8,130	8,660
TERRITORY	3,670	2,005	52,841	652	9,329	9,981

- 1/ SALES BY SLAUGHTERHOUSES. INCLUDES OFFAL, HIDE, AND TALLOW.
 2/ DELIVERED BOTTLING PLANT.

TABLE 43.--DAIRIES: NUMBER OF FARMS, BY SIZE, JANUARY 1, 1959 AND AVERAGE NUMBER OF COWS AND DAILY MILK PRODUCTION PER COW, BY ISLANDS, 1958

ISLAND	TOTAL FARMS	FARMS WITH SIZE OF HERD---				ANNUAL AVERAGE NUMBER OF MATURE DAIRY COWS	MILK PRODUCTION PER COW, PER DAY
		300 OR MORE	150 TO 299	50 TO 149	10 TO 49		
	NUMBER	NUMBER	NUMBER	NUMBER	NUMBER	QUARTS	
HAWAII	16	---	2	6	8	1,050	
KAUAI	6	---	1	2	3	590	
MAUI	5	1	1	1	2	730	
MOLOKAI	2	---	---	---	2	60	
OLAHU	61	6	15	36	4	10,880	
TERRITORY	90	7	19	45	19	13,310	

TABLE 44.--HOGS: NUMBERS, SLAUGHTER, AND LIVE WEIGHT VALUE, 1949-58 1/

YEAR	NUMBER OF FARMS 2/	HOGS ABOVE WEANING AGE 2/				SUCKLING PIGS 2/	ANNUAL SLAUGHTER 3/			
		TOTAL HOGS AND PIGS	BOARS	SOWS AND GILTS	MARKET HOGS		NUMBER	AVERAGE LIVE WEIGHT	LIVE WEIGHT	VALUE 4/
		NUMBER	NUMBER	NUMBER	NUMBER	NUMBER	POUNDS	1,000 POUNDS	1,000 DOLLARS	
1949	481	53,180	890	7,530	30,030	14,730	44,300	167	7,413	3,113
1950	518	63,400	940	8,370	37,270	16,820	53,400	163	8,829	3,003
1951	560	68,210	1,090	9,740	41,540	15,840	60,200	154	9,377	3,470
1952	588	79,850	1,190	10,310	49,730	18,620	66,900	164	10,975	3,951
1953	516	77,550	1,050	9,140	49,360	18,000	78,700	165	12,982	3,853
1954	419	68,580	890	7,950	44,950	14,790	76,400	160	12,275	3,980
1955	395	72,850	910	8,370	47,120	16,450	70,250	160	11,274	3,833
1956	358	71,510	870	8,080	48,090	14,470	73,000	167	12,214	3,628
1957	323	59,010	5/	6,940	5/	5/	74,030	160	11,842	3,654
1958	307	55,310	5/	6,930	5/	5/	73,390	157	11,486	3,836

1/ FARMS WITH HERDS OF 10 OR MORE HEAD OF ALL AGES.
 2/ AUGUST 31 FOR YEARS 1949-55; JANUARY 1 FOLLOWING YEAR FOR 1956-58.
 3/ FEEDER PIGS IMPORTED FROM THE MAINLAND ARE NOT INCLUDED.
 4/ AT SLAUGHTERHOUSE.
 5/ NOT ESTIMATED; SEE TABLE 45 FOR REVISED CLASSIFICATION.

TABLE 45.--HOGS: NUMBERS, JANUARY 1, 1959 AND SLAUGHTER AND LIVE WEIGHT VALUE, BY ISLANDS, 1958

ISLAND	TOTAL HOGS AND PIGS	SOWS AND GILTS	OTHER HOGS 6 MONTHS AND OVER	PIGS UNDER 6 MONTHS	ANNUAL SLAUGHTER			
					NUMBER	AVERAGE LIVE WEIGHT	LIVE WEIGHT	VALUE 1/
	NUMBER	NUMBER	NUMBER	NUMBER	POUNDS	1,000 POUNDS	1,000 DOLLARS	
HAWAII	3,570	420	1,140	2,010	7,230	147	1,060	332
KAUAI	2,000	310	290	1,400	3,450	133	457	169
MAUI	2,440	330	540	1,570	4,760	144	684	226
MOLOKAI/LANAI.....	640	80	100	460	690	160	111	40
OAHU	46,660	5,790	13,180	27,690	57,260	160	9,174	3,069
TERRITORY	55,310	6,930	15,250	33,130	73,390	157	11,486	3,836

1/ AT SLAUGHTERHOUSE.

TABLE 46.--HOGS: NUMBER OF FARMS, BY SIZE OF HERD, JANUARY 1, 1959 AND FARROWINGS, BY ISLANDS, 1958

ISLAND	TOTAL FARMS	FARMS WITH SIZE OF HERD--				SOWS FARROWED 1/	AVERAGE LIVE PIGS PER LITTER 1/
		500 AND OVER	300 TO 499	100 TO 299	10 TO 99		
	NUMBER	NUMBER	NUMBER	NUMBER	NUMBER	NUMBER	NUMBER
HAWAII	36	---	---	14	22	50	8.4
KAUAI	31	---	1	4	26	40	7.7
MAUI	48	---	1	3	44	45	8.0
MOLOKAI/LANAI.....	14	---	---	1	13	---	---
OAHU	178	19	28	76	55	695	8.1
TERRITORY	307	19	30	98	160	830	8.1

1/ ANNUAL AVERAGE. NO DATA AVAILABLE FOR MOLOKAI-LANAI.

TABLE 47.--CHICKENS: PRODUCTION, MARKETINGS, AND VALUE OF MEAT BIRDS AND EGGS MARKETED, 1949-58 ^{1/}

YEAR	MEAT BIRDS MARKETED			EGGS		
	NUMBER	LIVE WEIGHT	VALUE ^{2/}	PRODUCTION	MARKETINGS	VALUE OF MARKETINGS ^{2/}
	<u>1,000 BIRDS</u>	<u>1,000 POUNDS</u>	<u>1,000 DOLLARS</u>	<u>CASES</u>	<u>CASES</u>	<u>1,000 DOLLARS</u>
1949	441	1,651	1,026	105,770	103,000	2,910
1950	545	1,994	949	123,570	120,370	2,379
1951	740	2,671	1,437	134,730	131,170	3,224
1952	798	2,835	1,345	162,730	158,430	3,722
1953	807	3,382	1,733	178,670	174,800	4,036
1954	924	3,799	1,809	199,820	194,600	4,121
1955	1,003	4,282	1,925	219,700	213,500	4,311
1956	1,044	4,267	1,892	262,400	256,800	4,923
1957	1,177	4,995	2,062	294,450	288,950	5,091 ^{3/}
1958	1,213	4,905	1,848	313,250	299,160	5,900

^{1/} FLOCKS OF 100 OR MORE LAYERS OR 500 OR MORE MEAT BIRDS.

^{2/} BASED ON: WHOLESALE PRICES FOR 1949-57; PRICES RECEIVED BY FARMERS FOR 1958.

^{3/} REVISED.

TABLE 48.--CHICKENS: NUMBERS ON FARMS AND ANNUAL RATE OF LAY, 1949-58 ^{1/}

YEAR	TOTAL CHICKENS	LAYERS	PULLETS, 6 WEEKS TO LAYING	OTHER CHICKENS, OVER 6 WEEKS	CHICKS, UNDER 6 WEEKS	ANNUAL RATE OF LAY ^{2/}
	<u>1,000 BIRDS</u>	<u>1,000 BIRDS</u>	<u>1,000 BIRDS</u>	<u>1,000 BIRDS</u>	<u>1,000 BIRDS</u>	<u>EGGS</u>
	1949	580	253	134	63	130
1950	611	298	118	65	130	159.6
1951	680	312	123	109	136	159.6
1952	739	378	118	106	137	155.9
1953	752	398	149	95	110	168.6
1954	843	416	179	109	139	179.3
1955	820	408	179	93	140	190.0
1956	964	524	178	114	148	192.9
1957	932	530	^{3/}	^{3/}	^{3/}	204.2
1958	1,032	552	^{3/}	^{3/}	^{3/}	204.8

^{1/} NUMBERS ON AUGUST 31 FOR 1949-55; JANUARY 1 FOLLOWING YEAR FOR 1956-58.

^{2/} BASED ON ANNUAL AVERAGE NUMBER OF LAYERS.

^{3/} NOT ESTIMATED; SEE TABLE 52 FOR REVISED CLASSIFICATION.

TABLE 49.--CHICKENS: NUMBER OF FARMS, BY SIZE OF FLOCK, 1949-58 1/

YEAR	TOTAL FARMS	FARMS WITH LAYING FLOCKS OF--				FARMS WITH BROILER FLOCKS 2/
		3,000 AND OVER	1,500 TO 2,999	500 TO 1,499	100 TO 499	
	NUMBER	NUMBER	NUMBER	NUMBER	NUMBER	NUMBER
1949	437	12	21	109	282	13
1950	422	13	35	108	259	7
1951	397	17	38	121	214	7
1952	375	22	50	118	172	13
1953	340	27	38	131	134	10
1954	329	27	52	120	114	16
1955	332	25	52	120	121	14
1956	306	43	47	119	82	15
1957	267	41	48	87	76	15
1958	247	55	41	70	61	20

1/ AUGUST 31 FOR 1949-55, JANUARY 1 FOLLOWING YEAR FOR 1956-58. NUMBER OF FARMS BY SIZE GROUPS REVISED FOR 1949-55 ACCORDING TO REVISED CLASSIFICATION OF FARMS WITH BROILER FLOCKS.

2/ FARMS PRIMARILY FOR BROILER PRODUCTION WITH FLOCKS OF 500 OR MORE MEAT BIRDS BUT LESS THAN 100 LAYERS.

TABLE 50.--CHICKENS: PRODUCTION, MARKETINGS, AND VALUE OF MEAT BIRDS AND EGGS MARKETED, BY ISLANDS, 1958

ISLAND	MEAT BIRDS MARKETED			EGGS		
	NUMBER	LIVE WEIGHT	VALUE 1/	PRODUCTION	MARKETINGS	VALUE OF MARKETINGS 1/
	1,000 BIRDS	1,000 POUNDS	1,000 DOLLARS	CASES	CASES	1,000 DOLLARS
HAWAII	137	497	197	66,730	60,190	1,138
KAUAI	112	529	195	34,730	33,800	677
MAUI	56	241	95	22,070	21,490	432
MOLOKAI	2	10	5	350	340	7
OAHU	906	3,628	1,356	189,370	183,340	3,646
TERRITORY	1,213	4,905	1,848	313,250	299,160	5,900

1/ BASED ON PRICES RECEIVED BY FARMERS.

TABLE 51.--CHICKENS: NUMBER OF FARMS, BY SIZE OF FLOCK, BY ISLANDS, JANUARY 1, 1959

ISLAND	TOTAL FARMS	FARMS PRINCIPALLY FOR EGG PRODUCTION WITH LAYING FLOCKS OF--				FARMS WITH BROILER FLOCKS 1/
		3,000 OR MORE	1,500 TO 2,999	500 TO 1,499	100 TO 499	
	NUMBER	NUMBER	NUMBER	NUMBER	NUMBER	NUMBER
HAWAII.....	85	14	10	33	27	1
KAUAI.....	26	7	5	7	7	---
MAUI.....	22	2	6	5	8	1
MOLOKAI.....	3	---	---	---	3	---
OAHU.....	111	32	20	25	16	18
TERRITORY.....	247	55	41	70	61	20

1/ FARMS PRIMARILY FOR BROILER PRODUCTION WITH FLOCKS OF 500 OR MORE MEAT BIRDS BUT LESS THAN 100 LAYERS.

TABLE 52.--CHICKENS: NUMBER ON FARMS JANUARY 1, 1959 AND ANNUAL RATE OF LAY, BY ISLANDS, 1958

ISLAND	TOTAL CHICKENS	LAYERS	NON-LAYING PULLETS 3 MONTHS AND OVER	CHICKS AND YOUNG CHICKENS UNDER 3 MONTHS	OTHER CHICKENS	ANNUAL RATE OF LAY 1/
	NUMBER	NUMBER	NUMBER	NUMBER	NUMBER	Eggs
HAWAII.....	181,100	120,500	18,700	40,900	1,000	211.8
KAUAI.....	103,600	60,900	13,200	29,500	---	227.0
MAUI.....	61,900	38,000	5,900	17,300	700	207.1
MOLOKAI.....	1,200	700	---	500	---	184.1
OAHU.....	684,100	331,400	110,500	236,900	5,300	198.6
TERRITORY.....	1,031,900	551,500	148,300	325,100	7,000	204.8

1/ BASED ON ANNUAL AVERAGE NUMBER OF LAYERS.

TABLE 53.—HONEY AND BEESWAX: NUMBER OF PRODUCERS, COLONIES, PRODUCTION AND VALUE OF PRODUCTS, 1949-58

YEAR	PRODUCERS	COLONIES	HONEY ^{1/}			BEE SWAX		TOTAL VALUE
			PRODUCTION			PRODUCTION	VALUE	
			PER COLONY	TOTAL	VALUE			
NUMBER	NUMBER	POUNDS	1,000 POUNDS	1,000 DOLLARS	1,000 POUNDS	1,000 DOLLARS	1,000 DOLLARS	
1949.....	23	8,500	87	738	55.4	11.7	4.4	59.8
1950.....	22	8,900	89	795	59.7	17.1	7.0	66.7
1951.....	27	10,053	88	888	75.6	12.7	6.6	82.2
1952.....	27	11,911	49	584	55.5	7.3	3.3	58.8
1953.....	27	9,270	7	68	7.1	6.0	2.4	9.5
1954.....	27	8,925	37	332	34.1	6.6	2.8	36.9
1955.....	29	7,155	37	262	29.3	7.8	3.6	32.9
1956.....	27	7,050	35	307	35.2	5.8	3.1	38.3
1957.....	24	7,030	54	377	40.6	8.0	4.7	45.3
1958.....	20	6,700	52	352	35.6	6.5	3.0	38.6

^{1/} EXTRACTED.

TABLE 54.—HONEY AND BEESWAX: NUMBER OF PRODUCERS, COLONIES, PRODUCTION AND VALUE OF PRODUCTS, BY ISLANDS, 1958

ISLAND	PRODUCERS	COLONIES	HONEY ^{1/}			BEE SWAX		TOTAL VALUE
			PRODUCTION			PRODUCTION	VALUE	
			PER COLONY	TOTAL	VALUE			
NUMBER	NUMBER	POUNDS	1,000 POUNDS	1,000 DOLLARS	1,000 POUNDS	1,000 DOLLARS	1,000 DOLLARS	
HAWAII.....	4	850	122	104	13.5	1.8	0.9	14.4
KAUAI/NIIHAU.....	2	3,500 ^{2/}	20 ^{2/}	72 ^{2/}	5.5 ^{2/}	1.5 ^{2/}	0.7 ^{2/}	6.2 ^{2/}
MAUI.....	9	1,250	108	135	11.5	2.0	0.9	12.4
MOLOKAI.....	1	^{3/}	^{3/}	^{3/}	^{3/}	^{3/}	^{3/}	^{3/}
OAHU.....	4	1,100	37	41	5.1	1.2	0.5	5.6
TERRITORY.....	20	6,700	52	352	35.6	6.5	3.0	38.6

^{1/} EXTRACTED.

^{2/} DATA COMBINED WITH MOLOKAI TO AVOID DISCLOSURE OF INDIVIDUAL OPERATIONS.

^{3/} DATA INCLUDED WITH KAUAI/NIIHAU.

APPENDIX

Definitions and Explanations

The statistics of production and value in this publication relate principally to "diversified" agriculture, diversified being used in the sense of non-plantation crops. Statistical material on the two plantation crops, sugar and pineapples, was furnished by the Hawaiian Sugar Planters' Association and the Pineapple Growers Association of Hawaii.

Data on diversified agriculture are for "commercial" production, which excludes very small enterprises and some of the minor crops. Beginning in 1956 "commercial" production of crops is defined as production from enterprises which yielded \$600 or more of product. Previously there was no specific definition. Commercial production of livestock products is defined as the portion originating from beef cattle herds of 20 or more head, dairy and hog herds of 10 or more, and poultry flocks of 100 or more layers or 500 or more meat birds.

Sources

Basic livestock data are collected annually as of January 1 by mailed questionnaires and enumeration by crop reporters and county agents. Monthly estimates of dairy, poultry, and hog production are obtained from samples of enterprises, supplemented by slaughter records. Production of vegetables and fruits is estimated from recorded wholesale marketings, adjusted for direct sales to retail stores or to consumers, and for losses of mature crops resulting from market conditions. Coffee, rice, and taro production is estimated from milling records. Acreage of diversified crops is obtained by monthly enumeration.

Data on inshipments and outshipments are derived from records of steamship and airline companies, importers, wholesalers, and plant quarantine agencies. Products shipped in in annual quantities of less than 1,000 pounds are excluded. Direct shipments to the Armed Forces are also excluded.

Monthly wholesale prices in Honolulu are medians of quotations in the Tuesday or Thursday Federal-Territorial market reports. Annual average wholesale prices are weighted for volume sold by season and grade. Prices of products shipped out are free alongside ship, island port. Prices of meats are "at slaughterhouse"; milk prices are "delivered bottling plant."

Values are calculated at the wholesale or processing plant level for products consumed in the Territory, and free alongside ship, island port, for diversified products shipped out. Values of diversified crops and livestock are for marketings and exclude the value of products consumed on farms or not harvested because of marketing factors.

The 1947-49 Base Period

This year all indexes have been converted to a 1947-49 base. This base is the standard for all Federal government statistics.