

From the ground up: Building a roadmap of research priorities for a national research data management community

Melissa Cheung¹, Lyne Da Sylva², Dylanne Dearborn³, Shahira Khair⁴, Kathy Szigeti⁵

¹University of Ottawa; ²Université de Montréal; ³University of Toronto Libraries; ⁴University of Victoria Libraries; ⁵University of Waterloo

What is the Portage Network?

Portage is a Canadian research data management (RDM) initiative assisting researchers and other stakeholders via a library-based network of experts.

It develops national platforms and services for planning, preserving, and discovering research data. Portage is managed by the Canadian Association of Research Libraries.

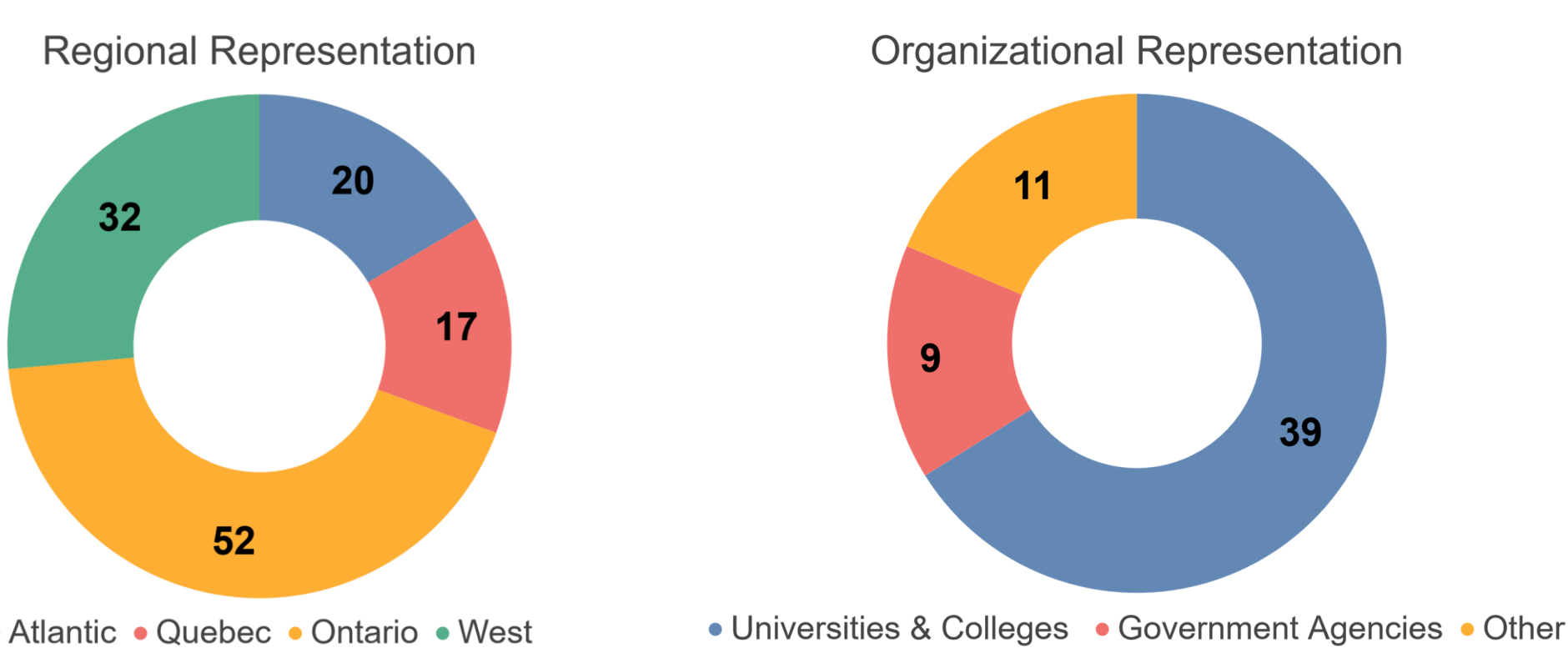


Figure 1. Characterization of Portage Network membership according to regional and organizational affiliation.

Network of Experts

- Develops resources, expert advice, and practical help to assist with the management of research data
- Expertise is provided in English and French to anyone working in a Canadian university or research institution

► Areas of Expertise

- Data Management Planning
- Data Discovery
- Curation
- Preservation
- Training
- Research Intelligence
- Institutional Planning
- Sensitive Data
- Data Repositories

Research Intelligence Expert Group

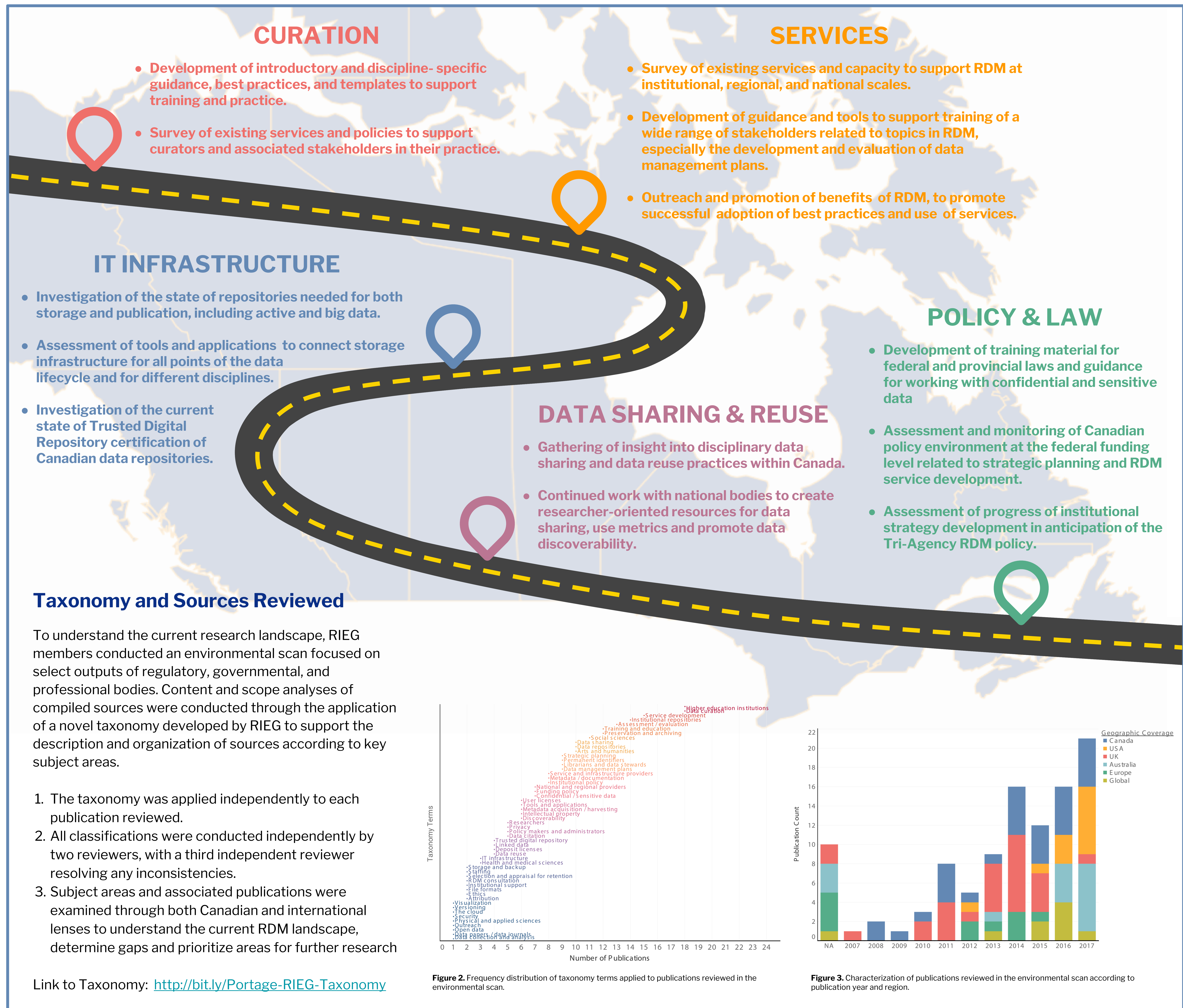
The Research Intelligence Expert Group (RIEG) provides intelligence on RDM in Canada through development and oversight of targeted studies designed to gather evidence.

► Roadmap Building

A high-level roadmap was developed to identify key priorities and bridge gaps in our knowledge about RDM practices, developments, culture and policies in Canada.

RIEG does its work in collaboration with other Portage expert groups.

The roadmap is intended to guide RIEG for the next two years.



Link to Taxonomy: <http://bit.ly/Portage-RIEG-Taxonomy>