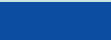




# The Competence Centre on Microeconomic Evaluation (CC-ME)

# Yearbook 2018



JRC116447  
EUR 29747 EN

PDF

Print

ISBN 978-92-76-03407-0

ISBN 978-92-76-04004-0

ISSN 1831-9424

ISSN 1018-5593

doi:10.2760/916057

doi:10.2760/2818

KJ-NA-29747-EN-N

KJ-NA-29747-EN-C

Luxembourg: Publications Office of the European Union, 2019

The reuse policy of the European Commission is implemented by Commission Decision 2011/833/EU of 12 December 2011 on the reuse of Commission documents (OJ L 330, 14.12.2011, p. 39). Reuse is authorised, provided the source of the document is acknowledged and its original meaning or message is not distorted. The European Commission shall not be liable for any consequence stemming from the reuse. For any use or reproduction of photos or other material that is not owned by the EU, permission must be sought directly from the copyright holders.

All content © European Union, 2019, unless otherwise stated.

The Competence Centre on  
Microeconomic Evaluation  
(CC-ME)

Yearbook 2018





# CONTENTS

## 1. INTRODUCTION

People@CC-ME	2
Foreword	3
CC-ME Mission	4
Counterfactuals	5

## 2. PROJECTS

Support to the preparation of the next Multiannual Financial Framework (MFF)	8
The Effects of EU grants for Research and Innovation	9
Effects of the Toy Safety Directive	10
Linking the Small Business Act to Economic performance	11
Cost Effectiveness Methodology for the Food Chain Area	12
Effects of the Airport Charges Directive	13
Evaluation of the 'Work Experience for Young Persons' programme	14
Quality Control of State Aid: Counterfactual Impact Evaluations	15

Effects of the Roam-Like-at-Home Directive	16
Projects with Administrative Data from Statistics Netherlands	17
Projects with Administrative Data from Statistics New Zealand	18

## 3. EVENTS

COMPIE Conference 2018	20
Book: Nuno Crato and Paolo Paruolo (Eds)	22
Event: How can EU policy benefit from new microdata?	24
CIE@EC workshops   Communities	26
Selected Invited Presentations	27
CC-ME External Seminar Series	28
Organisation of International Conferences	32

## 4. PUBLICATIONS

Papers in peer-reviewed journals	34
JRC Policy Reports and Working Papers	38
Book contributions	42
Awards and special mentions	44







# 1. INTRODUCTION



# People@CC-ME



Michele Aquaro



Massimiliano Bratti



Giulia Canzian



Maurizio Conti



Nuno Crato



Claudio Deiana



Montezuma Dumangane



Leandro Elia



Antonella Ferrara



Massimiliano Ferraresi



Andrea Geraci



Ludovica Giua



Sophie Guthmuller



Enkelejda Haveri



Gábor Kátay



Sven Langedijk  
Head of Unit



Athanasios Lapatinas



Gianluca Mazzarella



Alessandra Mazzola



Elena Meroni



Palma Mosberger



Mattia Olivi



Paolo Paruolo  
Head of CC-ME



Giulia Santangelo



Sylke Schnepf



Stefano Verzillo





## Foreword

The European Commission's Competence Centre on Microeconomic Evaluation (CC-ME) was founded on May 19, 2016 to support the evaluation function in the European Commission. CC-ME is part of Unit JRC.I.1 'Monitoring, Indicators & Impact Evaluation'.

CC-ME builds on the experience of the Centre for Research on Impact Evaluation (CRIE), which started as a joint project of the Joint Research Centre (JRC) and the European Commission Directorate-General Employment, Social affairs and Inclusion (DG EMPL) in 2013. CRIE is now an integral part of CC-ME.

This brochure reports highlights of CC-ME activities in 2018.

### Visit us

<https://ec.europa.eu/jrc/en/microeconomic-evaluation>

<https://connected.cnect.cec.eu.int/groups/cc-me> (for European Commission services only)

[ec-cc-me@ec.europa.eu](mailto:ec-cc-me@ec.europa.eu) (email)



# CC-ME Mission

## MISSION

To enhance EU policies through data-driven micro-econometric analysis and to provide causal evidence on what works.

## SERVICES

- Counterfactual Impact Evaluations
- Advice and capacity building on data access, evaluation design and methodology
- Quality review of impact evaluations

## FOCUS

Quantitative evaluations of policies contributing to the Better Regulation Agenda, the European Semester and EU Spending Programmes, in collaboration with all EU Institutions and Member States.



# Counterfactuals

## WHAT IS COUNTERFACTUAL IMPACT EVALUATION?

Counterfactual Impact Evaluation (CIE) compares the outcomes of individuals participating in a programme, or firms/regions subject to specific regulation (the treated group) with the outcomes of a comparison group, similar in all respects to the treated one but for participation in the programme (the comparison/control group).

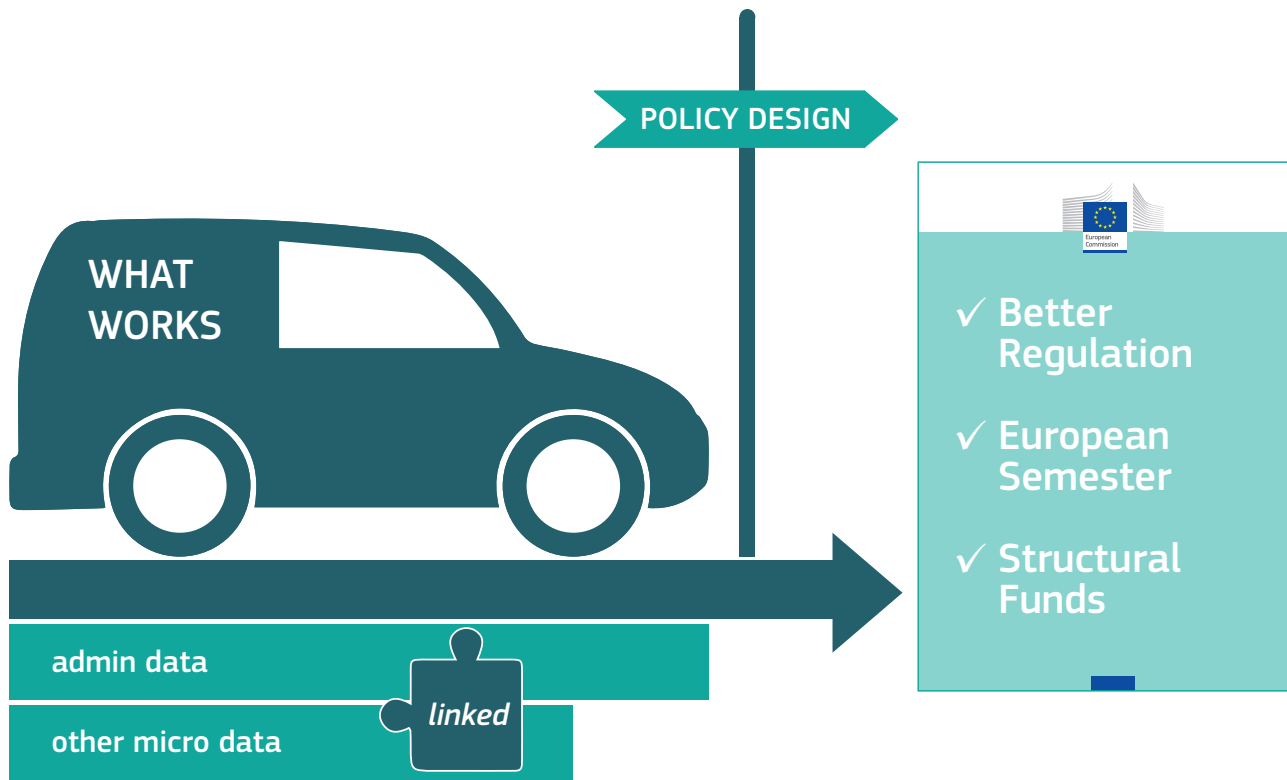
The comparison group helps addressing the question: ‘what would have happened to the treated individuals (or firms/regions) had they not participated in the programme?’, known as the counterfactual case.

## WHY DO WE NEED COUNTERFACTUAL IMPACT EVALUATION?

One basic goal of an evaluation is to learn to which degree the policy objectives were achieved.

CIE is the best tool to establish a causal link between policies and their effects, relying on data available both for the treated and the control groups.







# 2. PROJECTS



# Support to the preparation of the next Multiannual Financial Framework (MFF)

### WHY

The Regulatory Scrutiny Board (RSB) invited CC-ME to support the preparation of the Commission MFF proposal 2021 – 27. CC-ME provided advice on data plans for evaluation. Access to data is a key ingredient for improving evaluations of the future.

### WHEN

2018 preparation of proposals for the MFF 2021–2027.

### WITH WHOM

Secretariat-General (SG), RSB, AGRI, TAXUD, ENER, INVEST EU, ECHO, DEVCO, GROW, RTD, REGIO, MARE, EAC, EMPL, ENV, CNECT and other policy DGs.

### ACTIVITIES

Support for impact assessments in upstream meetings with the RSB.



# The Effects of EU grants for Research and Innovation

## WHY

The EU supports private investment in research and innovation (R&I). This project evaluates the impact of EU grants for R&I on firms' performance.

## WHEN

January 2017 – December 2018.

## WITH WHOM

DG RTD.

## ACTIVITIES

- First rigorous evaluation of the impact of EU R&I funds.
- The analysis relies on a quasi-experimental research design, comparing successful and unsuccessful applicants to the EU's 7<sup>th</sup> Framework Programme.
- The research covers 46 countries over the period 2007 – 2013.
- Main finding: EU grants have had a positive impact on firms' productivity.



Source: Olivier Le Moal, © Adobe Stock, 2019

# Effects of the Toy Safety Directive

### WHY

This evaluation aims at quantifying costs and benefits of the Toy Safety EU Directive (TSD), 2009/48/EC. It will assess impacts on company production costs and on the occurrence of toy-related injuries.

### WHEN

Ongoing, June 2018 – March 2019.

### WITH WHOM

DG GROW.

### ACTIVITIES

- Quantification of company production costs to comply with the TSD.
- Feasibility study on the quantification of the benefits generated by the TSD.
- Quantification of the benefits brought about by the TSD, such as reduced toys-related injuries, and reduced non-compliant items in the market.



Source: BillionPhotos.com, © Adobe Stock, 2019



# Linking the Small Business Act to Economic performance

## WHY

Assessing the effects of the Small Business Act (SBA) priorities on Employment and Value Added of Small and Medium Enterprises (SMEs); total employment and unemployment rates.

## WHEN

Ongoing, July 2017 – March 2019.

## WITH WHOM

DG GROW.

## ACTIVITIES

Econometric analysis assessing the association of SBA with employment of SMEs, value added of SMEs, and total employment rate.

## FINDINGS

More abundant and granular data is needed to uncover relationships between the programme and outcomes.



Source: Stairs and man > MJgraphics, © Shutterstock, 2016

## Cost Effectiveness Methodology for the Food Chain Area

### WHY

Methodological guidance on cost-effectiveness analysis of EU interventions funded under the Common Financial Framework of the food chain area (CFF), Regulation EU No 652/2014.

### WHEN

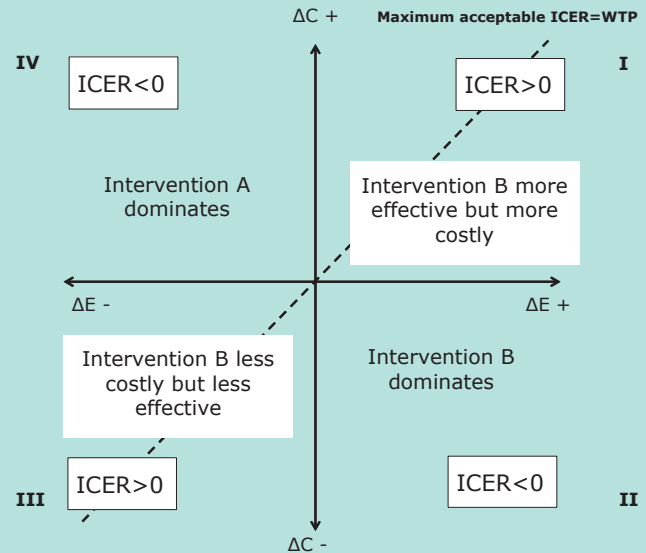
January – August 2018.

### WITH WHOM

DG SANTE.

### ACTIVITIES

Should more funding be awarded to *prevention measures* or to *control measures*, to reduce the risk of outbreaks of classical swine fever in pigs? This guidance document suggests counterfactual evaluation methods to answer this type of questions and illustrates the methodology introduced for specific CFF related policy questions. These methods are based on disaggregated data and regression techniques.



Source: figure adapted from Drummond, M.F., Sculpher, M.J., Claxton, K., Stoddart, G.L., Torrance, G.W., *Methods for the economic evaluation of health care programmes*, 2<sup>nd</sup> ed, Oxford University Press, 1997

# Effects of the Airport Charges Directive

## WHY

Evaluation of the impact of the Airport Charges Directive (ACD) on the level of aeronautical charges.

## WHEN

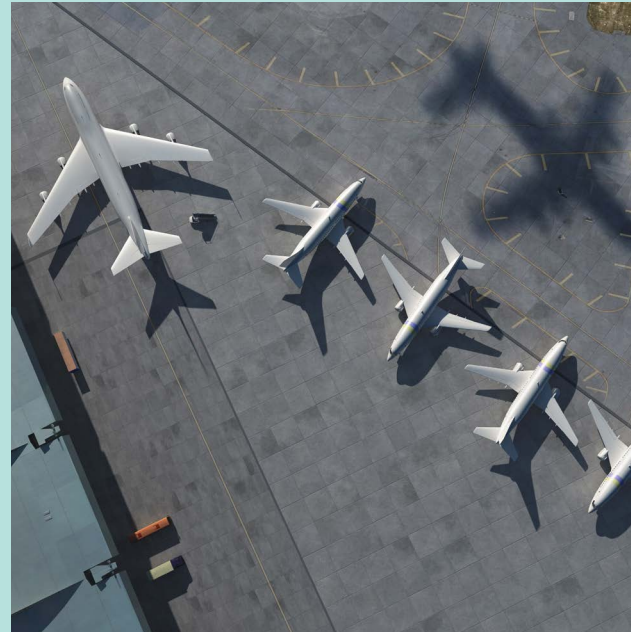
August 2017 – June 2018.

## WITH WHOM

DG MOVE.

## ACTIVITIES

- The analysis was conducted on a sample of EU airports serving between 2 and 20 million passengers over the period 2008-2017, applying a counterfactual impact evaluation method.
- The results showed that the transposition of the Airport Charges Directive into national legislation has led to statistically significant reduction in the level of airport charges a few years after implementation.



Source: Photobank, © Adobe Stock, 2019

## Evaluation of the ‘Work Experience for Young Persons’ programme

### WHY

Effectiveness of the ‘Work Experience for Young Persons (WIJ)’ programme, implemented in Flanders in June 2015 by the Flemish division of the European Social Fund. The programme provided individualised action plan and labour market orientation to young people.

### WHEN

Ongoing, 2018 – 2019.

### WITH WHOM

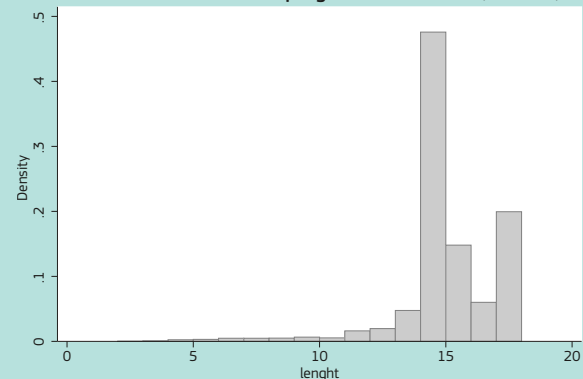
DG EMPL and ESF Department of the Flemish Ministry of Employment and Social Economy.

### ACTIVITIES

- Supporting the Member States on capacity building in performing CIE evaluation through the transfer of know-how on data collection and methodology.

- Contributing to the EU policy development process, by informing the policy makers about what policies worked best, allowing in this way to improve programmes.

Distribution of the WIJ programme duration (months)



Source: Canzian, G., Foubert, J., Meroni, E.C., Santangelo, G., ‘Active Labour Market Policies in Flanders. Evaluation of the ESF “Work Experience for Young Persons” programme’, No. JRC113899, 2018

# Quality Control of State Aid: Counterfactual Impact Evaluations

## WHY

Quality review of evaluation plans and reports in the area of State Aid performed by Member States under the Block Exemption Regulation.

## WHEN

Ongoing, July 2018 – June 2020.

## WITH WHOM

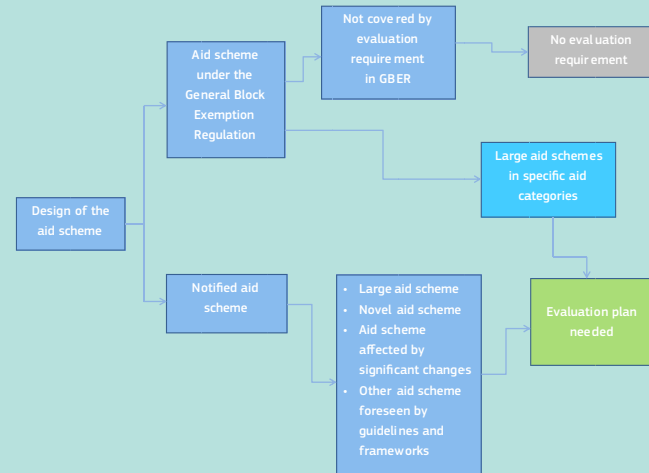
DG COMP.

## ACTIVITIES

The objective is to assist DG COMP in the quality control, analysis and feedback on evaluation reports from Member States. In particular:

- Guidelines for a structured approach for the quality assessment of the evaluation reports.
- Repository of Reports.
- Analysis of Interim Reports.

- Analysis of Final Reports.
- Preliminary assessment of evaluation plans.



Source: European Commission (2014), SWD(2014) 179

# Effects of the Roam-Like-at-Home Directive

### WHY

Review of the EU roaming rules that entered into force on 15 June 2017.

### WHEN

Ongoing, March 2018 – 2019.

### WITH WHOM

DG CNECT.

### ACTIVITIES

- Contributing to shaping the analytical framework of the roaming review.
- Analysing individual mobile operators' data in order to understand the effects of the regulation on the telecommunication market's structure.
- Conducting analyses of mobile operators' Fair Use Policies.
- Contributing to drafting technical parts of the different Commission's Staff Working Documents under the roaming review.



# Projects with Administrative Data from Statistics Netherlands

## WHY

Study how inequality of opportunity and socio-economic outcomes are affected by lack of interactions of members of different social groups.

## WHEN

Ongoing, August 2018 – 2019.

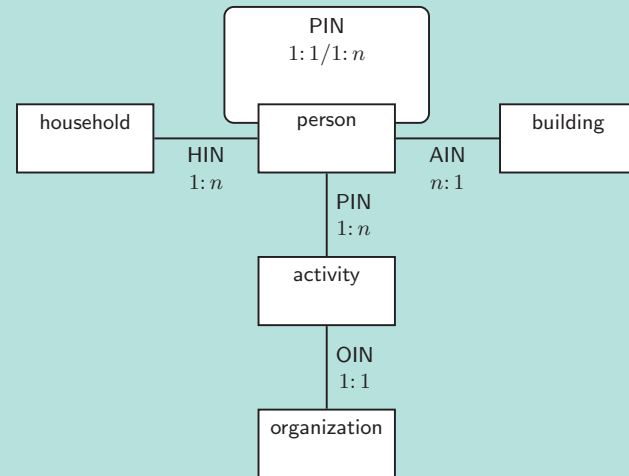
## WITH WHOM

Statistics Netherlands (Centraal Bureau voor de Statistiek, or CBS).

## ACTIVITIES

Research questions:

- How are economic opportunities for children shaped by the neighbourhoods in which they grow up?
- Does this pattern depend on the level of segregation in the area where their family lives?
- Is the exposure to segregated environments persistent across generations?



Source: CBS Microdata, Netherlands

## Projects with Administrative Data from Statistics New Zealand

### WHY

Demonstration projects to show how administrative data can be used to investigate the impact of social investment.

### WHEN

Ongoing, 2017 – 2019.

### WITH WHOM

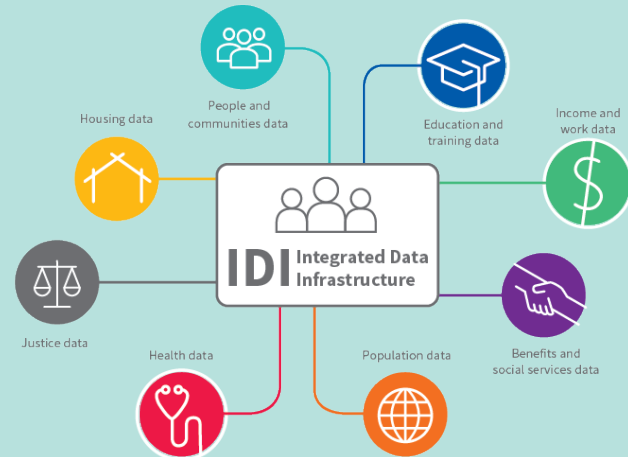
Statistics New Zealand (Tauranga Aotearoa).

### ACTIVITIES

Lines of research:

- The impact of formal removal from school and Positive Behaviour for Learning (PB4L) on crime.

- The impact of parental income support on youth offending.
- The effects of individual education on subsequent health status, health-related behaviour and behaviour of offspring.



Source: Statistics New Zealand





# 3. EVENTS





COMPIE round table 'Social dividends of counterfactual impact evaluation in the EU: present, past and future'. From left to right: Paolo Paruolo, Nils aus dem Moore, Oddbjørn Raam, Isabelle Schömann, Roxane Silberman, and Lars Skipper (Jonneke Bolhaar was connected through video-conference).



# COMPIE Conference 2018

## COUNTERFACTUAL METHODS FOR POLICY IMPACT EVALUATION (COMPIE) 2018

- Berlin, September 26-28, 2018 (3<sup>rd</sup> edition)
- Jointly organized by CC-ME with Humboldt-Universität zu Berlin and RWI-Leibniz Institute for Economic Research.
- 120 participants and 89 scientific papers.

### KEYNOTE SPEAKERS

Josh Angrist (MIT) and Jesse Rothstein (UC Berkeley).

### ROUND TABLE

‘Social dividends of counterfactual impact evaluation in the EU: present, past and future’, with Nils aus dem Moore (RWI Berlin), Jonneke Bolhaar (CPB Nederland), Oddbjørn Raaum (Frisch Centre, Norway), Isabelle Schömann (Regulatory Scrutiny Board, European Commission), Roxane Silberman (Paris School of Economics), and Lars Skipper (Aarhus University).

The European Commission, Directorate-General Joint Research Centre (DG JRC)  
in collaboration with  
Humboldt-Universität zu Berlin  
and  
RWI - Leibniz Institute for Economic Research  
*are happy to announce the conference*

# COMPIE 2018

## COunterfactual Methods for Policy Impact Evaluation

26 -28 September, 2018  
Humboldt-Universität zu Berlin

Keynote Speakers:  
Joshua ANGRIST, MIT  
Jesse ROTHSTEIN, University of California, Berkeley

Registration and info at: <https://ec.europa.eu>

Logos at the bottom: European Union, RWI Leibniz-Institut für Wirtschaftsforschung, Humboldt-Universität zu Berlin.



The book editors: Nuno Crato (left), Paolo Paruolo (right).



## Book: Nuno Crato and Paolo Paruolo (Eds), Springer, 2019

### BOOK

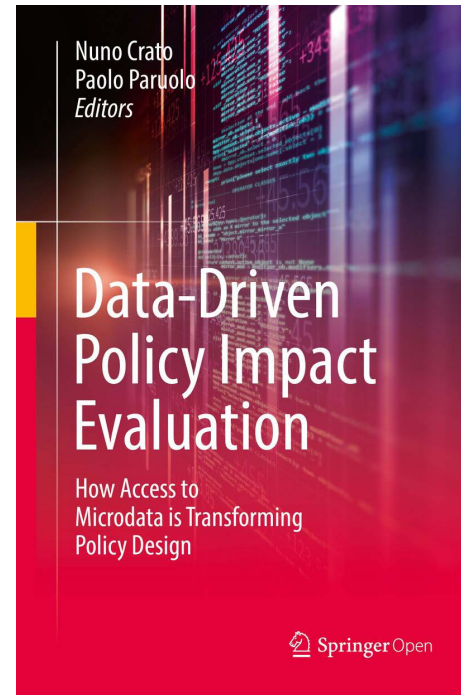
Crato, N., Paruolo, P. (Eds.), *Data-Driven Policy Impact Evaluation – How Access to Microdata is Transforming Policy Design*, Springer, 2019.

### ABOUT

This open-access book presents the state-of-the-art use of administrative databases and statistical tools for evaluating the effects of public policies. It contains articles from experts from academia, national statistics offices and various research centers. Topics include data-confidentiality, data-linkage, and national practices in policy areas such as public health, education and employment. The book offers insights on counterfactual impact evaluation methods and the potential of data-based programme evaluation.

### LINK (FREE DOWNLOAD)

<https://www.springer.com/it/book/9783319784601>





From left to right: Nuno Crato, Vladimír Šucha, Carlos Moedas, Andreas Kopp.



## Event: How can EU policy benefit from new microdata?

### EVENT

Roundtable discussion and book presentation of Crato N. and Paruolo P. eds. (2019), *Data-Driven Policy Impact Evaluation: How Access to Microdata is Transforming Policy Design*, Brussels, 3 December 2018.

### PROGRAMME

Welcome by Vladimír Šucha (Director-General, Joint Research Centre).

Intervention by Carlos Moedas (Commissioner for Research, Science and Innovation).

Book presentation, Nuno Crato (University of Lisbon) and Paolo Paruolo (Joint Research Centre).

Discussion with the book authors and Andreas Kopp (member of the Regulatory Scrutiny Board) and Jean-Philippe Gammel (member of Cabinet of Commissioner Navracsics).



## CIE@EC workshops | Communities

Workshops on best practice in Counterfactual Impact Evaluation for Commission Services.

### WHEN

- 1<sup>st</sup> Workshop: January 2018, Brussels.
- 2<sup>nd</sup> Workshop: November 2018, Brussels.

### OBJECTIVES

- Share best practice on Counterfactual Impact Evaluation (CIE) in the European Commission. The workshop included case studies on EU regulations and spending programmes carried out by CC-ME.
- Maintain a constant collaboration with policy DG dealing with the evaluation of EU policies using Counterfactual Impact Evaluation (CIE) methods.

### COMMUNITY OF PRACTICES ON CIE FOR THE ESF

The Community of Practices (CoP) is an initiative launched in 2016 to foster the use of CIE to evaluate the impact of the interventions funded through the European Social Fund (ESF), and to create an environment where to share experience about CIEs.

- CoP in Brussels, December 2017.
- CoP in Athens, June 2018.
- Workshop on CIE in Prague, October 2018.

### NetCIEX

NetCIEX is a multilateral Collaboration Agreement, which aims to foster research collaboration between the CC-ME and several academic and institutional partners in order to contribute more effectively to the understanding of effects of policy and to resolving scientific issues in the field of CIE.





## Selected Invited Presentations

### HIGH-LEVEL EXPERTS MEETING@EUI

On April 19, 2018, P. Paruolo gave a talk on 'Training experience and training needs' at the meeting organised in Fiesole (IT) by the European University Institute (EUI) and entitled *From Data to European Policy-Making: The Use of Metrics to Reframe Policies*.

### IPA CONFERENCE

On April 26–27, 2018, M. Aquaro gave a talk on 'Impact Assessment and Impact Evaluation Practice in the Joint Research Centre' at the conference organised in Sofia (BG) by the Bulgarian Institute for Public Administration (IPA) entitled *Impact Assessment. What can we do better?*

### EUROPEAN WEEK OF REGIONS AND CITIES

On October 10, 2018, A. Lapatinas (pictured right) gave a talk on 'Programming for Performance' to the European Week of Regions and Cities, Session 2021 plus. *How to get funding priorities right*, Brussels.



Source: European Union / Vincent Van Doornick

## CC-ME External Seminar Series

Ordered chronologically, 2018

Antonio Accetturo, Bank of Italy

*Stuck in the wrong place: long term consequences of pirate attacks in Italy*

Diogo Brito, Catholic University of Milan

*Unemployment Insurance and the Duration of Employment: Theory and Evidence*

Enrico Rettore, University of Trento and FBK-IRVAPP

*On the perils of stacking in thresholds in RD designs*

Lorenzo Cappellari, University Cattolica Milan

*Workers, Firms and Life-Cycle Wage Dynamics*

Audinga Baltrunaite, Bank of Italy

*Discretion and Supplier Selection in Public Procurement*

Simona Gamba, University of Verona

*Strategic Interaction in Pharmaceutical Price Regulation and Innovation*

Patricia Funk, Università della Svizzera Italiana (USI)

*Policy Choices in Assembly versus Representative Democracy: Evidence from Swiss Communes*



Antonio di Paolo, Universitat de Barcelona

*Language skills and the intergenerational transmission of languages in a bilingual society*

Santiago Pereda, Bank of Italy

*Copula-Based Random Effects Models for Clustered Data*

Alessandro Palma, University of Rome Tor Vergata

*Air pollution during pregnancy and birth outcomes in Italy*

Michele Pellizzari, University of Geneva

*Distant Learning in Higher Education: Evidence from a Randomised Experiment*

Pierre-André Chiappori, Columbia University

*Inequality, Human Capital and the Family*

Shqiponja Telhaj, University of Sussex

*The Rise of the 'Super-Head'. Salary Differentials and Academy Schools*

Ansgar Wuebker, RWI

*Do higher hospital reimbursement prices improve quality of care?*



**Irene Botosaru**, University of Bristol  
*Advances in Difference-in-Differences Estimation*

**Effrosyni Adamopoulou**, Bank of Italy  
*Not just a Work Permit: The Effect of Gaining EU Citizenship on the Consumption Behavior of Legal and Illegal Immigrants*

**Anna Adamecz-Volgyi**, Budapest Institute  
*Increased Compulsory School Leaving Age Affects Secondary School Track Choice and Increases Dropout Rates in Vocational Training Schools*

**Martin Huber**, University of Fribourg  
*On the sensitivity of wage gap decompositions*

**Louis Volante**, Brock University and Maastricht University  
*Socioeconomic Inequality and Student Outcomes across the European Union: National Trends, Policies, and Practices*

**Joanna Sikora**, Australian National University  
*Aimless or flexible? Does uncertainty in adolescent occupational expectations matter in young adulthood?*



Emanuele Ciani, Bank of Italy

*Machine Learning in the Service of Policy Targeting: The Case of Public Credit Guarantees*

Massimo Franchi, Università La Sapienza Roma

*A feasibility study on the functional time series dynamic analysis of income*

Paolo Pinotti, Bocconi University

*Revealing Stereotypes: Evidence from Immigrants in Schools*

Alessandro Belmonte, Scuola IMT Alti Studi Lucca

*From Italianization to Germanization: Division of Labor, Economic Rents, and Anti-German Attitudes in South Tyrol*

Matteo Gamalerio, Institut d'Economia de Barcelona (IEB)

*Fiscal rules and the selection of politicians: evidence from Italian municipalities*

Yuya Sasaki, Vanderbilt University

*A Practical Method of Estimation and Inference for Policy-Relevant Treatment Effects*



## Organisation of International Conferences

**P. Paruolo:** chair of the scientific committee of the *COMPIE 2018* conference, Berlin 26-28 September 2018.

**A. Lapatinas:** member of the organising committee of the *Conference of the Complex Systems Society* organised in Thessaloniki, 23-28 September 2018.

**S. Guthmuller:** organiser and chair of the session at the *European Health Economics Association (EuHEA) 2018* conference, Maastricht, 11-14 July 2018. Session entitled *Evaluation of Health Policies: Evidence from studies using administrative data sources*. Session speakers: **M. Bratti**, S. Gamba, **S. Guthmuller**, **S. Verzillo**, A. Wuebker.

**M. Bratti:** organiser and chair of the Joint Session *Associazione Italiana Economisti del Lavoro (AIEL) and European Commission JRC*, session speakers: C. Felfe, **G. Katay**, C. Pignatti, **G. Santangelo**.



# 4. PUBLICATIONS



## Papers in peer-reviewed journals

The electronic version of this document has hyperlinks to DOI, when available.

**Aquaro, M., Čížek, P.**, 'Robust estimation and moment selection in dynamic fixed-effects panel data models', *Computational Statistics*, 33:2, pp. 675-708, 2018.

Bardsley, N., Buechs, M., **Schnepf, S.V.**, 'Something from nothing: Estimating consumption rates using propensity scores, with application to emissions reduction policies', *PLOS ONE*, 2017.

Benzúr, P., **Kátay, G.**, Kiss, Á., 'Assessing the economic and social impact of tax and benefit reforms: A general-equilibrium microsimulation approach applied to Hungary', *Economic Modelling*, Vol. 75, 2018, pp. 441-457.

Bertoni, M., Brunello, G., **Mazzarella, G.**, 'Does Postponing Minimum Retirement Age Improve Healthy Behaviours Before Retirement? Evidence from Middle- Aged Italian Workers', *Journal of Health Economics*, Vol. 58, 2018, pp. 215-227.

Boswijk, P.H., **Paruolo, P.**, 'Likelihood ratio tests of restrictions on common-trends loading matrices in I(2) VAR systems', *Econometrics*, Vol. 5, 2017.

Bottasso, A., **Conti, M.**, Costacurta, P., Ferrari, C., Tei, A., 'Port infrastructure and trade. Empirical evidence from Brazil', *Transportation Research Part A: Policy and Practice*, Vol. 107(C), 2018, pp. 126-139.





**Bratti, M.**, Conti, C., 'The effect of immigration on innovation in Italy', *Regional Studies*, Vol. 52(7), 2018, pp. 934-947.

**Bratti, M.**, Felice, G., 'Product innovation by supplying domestic and foreign markets', *International Journal of Industrial Organization*, Vol. 60(C), 2018, pp. 126-178.

Cecchi, D., De Fraja, G., **Verzillo, S.**, 'Selections from Ordered Sets', *Social Choice and Welfare*, Vol. 18(50), 2018, pp. 677-703.

Ciani, E., **Deiana, C.**, 'No free lunch, buddy: past housing transfers and informal care later in life', *Review of Economics of the Household*, Vol. 16(4), 2018, pp. 971-1001.

**Conti, M.**, **Ferrara, A.R.**, **Ferraresi, M.**, 'Did the EU Airport Charges Directive lead to lower aeronautical charges? Empirical evidence from a diff-in-diff research design', *Economics of Transportation*, Vol 17, 2019, pp. 24-39.

Doornik, J.A., Mosconi, P., **Paruolo, P.**, 'Formula I(1) and I(2): Race Tracks for Likelihood Maximization Algorithms of I(1) and I(2) Cointegrated VAR Models', *Econometrics*, 5, 49, 2017.

Durrant, G., **Schnepf, S.V.**, 'Which schools and pupils respond to educational achievement surveys? A focus on the English PISA sample', *Journal of Royal Statistical Society: Series A*, 181(4), 2017, pp. 1057-1075.



**Ferrara, A.R.**, Lombardo, R., Nisticò, R., 'Subjective and Objective Well-Being: Bridging the Gap'. *Italian Journal of Regional Science*, forthcoming.

**Ferrara, A.R.**, Nisticò, R., 'La mobilità degli studenti universitari in Italia'. *Rivista Economica del Mezzogiorno*, Vol. 1-2, 2018, pp. 117-138.

**Ferraresi, M.**, Kotsogiannis, C., Rizzo, L., 'Decentralisation and Fuel Subsidies', *Energy Economics*, Vol. 74, 2018, pp. 275-286.

**Ferraresi, M.**, Migali, G., Rizzo, L., 'Does Inter-municipal cooperation promote efficiency gains? Evidence from Italian Municipal Unions', *Journal of Regional Science*, Vol. 58(5), 2018, pp. 1017-1044.

**Ferraresi, M.**, Migali, G., Rizzo, L., 'Spillover effects in local public spending', *Regional Studies*, Vol. 52, 2018, pp. 1570-1584.

**Ferraresi, M.**, Galmarini, G., Rizzo, L., 'Infrastructure spillovers and strategic interaction: does the size matter?', *International Tax and Public Finance*, Vol. 25, 2018, pp. 240-272.

Fiorio, C., Gorli, M., **Verzillo, S.**, 'Evaluating Organizational Change in Healthcare: the Patient-Centered Hospital model', *BMC Health Service*, 2018.

Flisi, S., Goglio, V., **Meroni, E.C.**, Vera-Toscano, E., 'Cohort patterns in adult literacy skills: How are new generations doing?', *Journal of Policy Modeling*, Vol 18(1), 95, 2018.

Franchi, M., **Paruolo, P.**, 'A general inversion theorem for cointegration', *Econometric Reviews*, forthcoming.

Galuščák, K., **Kátay, G.**, 'Tax-Benefit Systems and Differences in Aggregate Labour Force Participation: Comparative Evidence from the Czech Republic and Hungary', *Economic Systems*, forthcoming.

Garas, A., **Lapatinas, A.**, 'The role of consumer networks in firms' multi-characteristics competition and market share inequality', *Structural Change and Economic Dynamics*, 43, 2017, pp. 76-86.

Ghirelli, C., **Havari, E.**, **Santangelo, G.**, Scettri, M., 'Does on the job training help unemployed get a job? Evidence from an Italian Region', *International Journal of Manpower*, forthcoming.

**Lapatinas, A.**, Litina, A., Sartzetakis, E.S., 'Environmental projects in the presence of corruption', *International Tax and Public Finance*, 2018, pp. 1-42.

**Lapatinas, A.**, Litina, A., 'Intelligence and economic sophistication', *Empirical Economics*, 2018, pp. 1-20.

Martelli S., Janssens-Maenhout, G., **Paruolo, P.**, Bréchet, T., Strobl, E., Guizzardi, D., Cerutti, A.K., Iancu, A., 'Do Voters Support Local Commitments for Climate Change Mitigation in Italy?', *Ecological Economics*, 144, 2018, pp. 27-35.

Tubeuf, S., **Guthmuller, S.**, 'Economic evaluation of family-based therapies for children and adolescents: what do we know?', *Global & Regional Health Technology Assessment*, 4(1), 2017, pp. 197-207.



## JRC Policy Reports and Working Papers

The electronic version of this document has hyperlinks to DOI, when available.

Abadir, K.M., Luati, A., **Paruolo, P.**, 'The prediction distribution of a GARCH(1,1) process', arXiv:1812.08409 [math.ST].

**Aquaro, M., Geraci, A., Lapatinas, A., Meroni, E., Paruolo, P.**, 'Studying the relationship between European Social Funds and Employment\Education: A panel data approach', *JRC Technical Report series*, No. JRC110344, 2017.

Biancardi, D., **Bratti, M.**, 'The Effect of the First Italian Research Evaluation Exercise on Student Enrolment Choices', *IZA Discussion Papers* No. 11302, Institute for the Study of Labor (IZA), 2018.

**Bratti, M.**, De Benedictis, L., Santoni, G., 'Immigrant entrepreneurs, diasporas and exports', Working Papers 2018-01, Joint Research Centre, European Commission, 2018.

**Bratti, M.**, Felice, G., 'Product innovation by supplying in domestic and foreign markets,' Working Papers 2018-03, Joint Research Centre, European Commission, 2018.

**Bratti, M., Ghirelli C., Havari, E., Santangelo, G.**, 'Vocational training for the unemployed in Latvia. Evidence from a regression discontinuity design', *IZA Discussion Papers* No. 11870, Institute for the Study of Labor (IZA), 2018.



**Bratti, M., Ghirelli C., Havari, E., Santangelo, G.,** ‘Vocational training and labour market outcomes: Evidence from Youth Guarantee in Latvia’, *JRC Science-for-policy reports*, JRC110247, 2018.

**Bratti, M., Deiana, C., Havari, E., Mazzarella, G., Meroni, E.C.,** ‘What are you voting for? Proximity to Refugee Reception Centres and Voting in the 2016 Constitutional referendum’, *IZA Discussion Papers* No. 11060, 2017.

**Bratti, M., Verzillo, S.,** ‘The Gravity of Quality: Research Quality and Universities’ Attractivity in Italy’, *IZA Discussion Papers* No. 11026, Institute for the Study of Labor (IZA), 2017.

**Canzian, G., Ferrara A.R., Ferraresi, M.,** ‘An analysis of the influence of remedies and sanctions on consumers’ exposure to unfair commercial practices and shopping problems’, *JRC Technical Report series*, No. JRC110275, 2018.

**Canzian, G., Foubert, J., Meroni, E.C., Santangelo, G.,** ‘Active Labour Market Policies in Flanders. Evaluation of the ESF “Work Experience for Young Persons” programme’, No. JRC113899, 2018.

**Conti, M., Elia, L., Ferrara, A.R., Ferraresi, M.,** ‘The Airport Charges Directive and the level of airport charges’, *JRC Technical Report series*, No. JRC110275, 2018.

**Conti, M., Elia, L., Ferrara, A.R., Ferraresi, M.,** ‘The Late Payment Directive and the economic performance of firms’, *JRC Technical Report series*, No. JRCJRC115002, 2019.



Correia Midoes, C., **Dumangane, M., Elia, L.**, 'Assessment of the implementation of country-specific recommendations under the ES - AIRES', *JRC Technical Report series*, 2018.

**Deiana, C., Mazzarella, G., Meroni, E., Mosberger, P., Paruolo, P.**, 'Feasibility study for the overall impact evaluation of the European Social Fund', *JRC Technical Report series*, No. JRC107188, 2017.

**Ferrara, A.R., Ferraresi, M., Giua, L.**, 'Support to the quality assessment of evaluation plans and reports in the area of State Aid (EVALSA)' JRC Technical Report, 2018.

Fiorio C., **Verzillo S.**, 'Looking in Your Partner's Pocket Before Saying "Yes!" Assortative Mating and Income Inequality'. *DEMM Working Paper 2018-02*, Department of Economics, Management and Quantitative Methods at Università degli Studi di Milano, 2018.

**Geraci, A.**, Nardotto, M., Reggiani, T., Sabatini, F., 'Broadband Internet and Social Capital', *IZA Discussion Papers* No. 11855, 2018.

Ghirelli, C., **Havari, E., Santangelo, G.**, Scettri, M. 'Does on-the-job training help graduates find a job? Evidence from an Italian Region,' Working Papers 2018-14, Joint Research Centre, European Commission, 2018.

**Guthmuller, S., Dumangane, M.B., Ferranna, L., Giua, L., Mosberger, P.**, 'Cost Effectiveness Analysis: Methodology for the Food Chain Area', *JRC science for policy report*, No. JRC112643), 2018.

**Guthmuller, S., Elia, L.**, 'Feasibility study on the quantification of the benefits generated by the Toy Safety Directive', *JRC science for policy report*, No. JRC114569, 2018.

Harasztosi, P., **Kátay, G.**, 'Currency Matching by Non-Financial Corporations', *JRC Working Papers in Economics and Finance*, 2017/2.

**Meroni, E.C.**, Piazzalunga, D., Pronzato, C., 'Use of Extra-School Time and Child Behaviours: Evidence from the UK'. *IZA Discussion Papers* No. 11606, 2018.

**Schnepf, S.V.**, 'Insights into survey error of large scale educational achievement surveys', JRC Technical Report, European Union, 2018.

**Schnepf, S.V.**, 'Unequal uptake of higher education mobility in the UK. The importance of social segregation in universities and subject areas.' JRC Technical Report, 2018.

**Schnepf, S.V.**, D'Hombres, B., 'International mobility of students in Italy and the UK: does it pay off and for whom?', *IZA Discussion Papers* No. 12033, 2018.

## Book contributions

The electronic version of this document has hyperlinks to DOI, when available.

Cersosimo, D., **Ferrara, A.R.**, Nisticò, R., 'L'Italia dei pieni e dei vuoti', in De Rossi, A., 'Riabitare l'Italia: comunità e territori tra abbandoni e riconquiste', Donzelli Editore, ISBN-13: 9788868438494, 2018.

Cersosimo, D., **Ferrara, A.R.**, Nisticò, R., 'Gli imprenditori e i luoghi: scenari in movimento' in De Rossi, A., 'Riabitare l'Italia: comunità e territori tra abbandoni e riconquiste', Donzelli Editore, 2018, ISBN-13: 9788868438494, 2018.

Cecchi, D., **Verzillo, S.**, 'The Role of PISA in Regional and Private/Public Debates in Italy' in Volante L., 'PISA, Educational Governance, and Transnational Policy', Routledge ISBN 9781138217461, 2018.

Ferrara, A., Montanelli, S., **Verzillo, S.**, 'Google Scholar as a Citation Database for Non-bibliometric Areas: the EVA Project Results' in Bonaccorsi, A., 'The Evaluation of Research in Social Sciences and Humanities', Springer ISBN 9783319685540, 2018.

Cristini, A., **Geraci, A.**, Muerllbauer, J., 'Sifting through the ASHE: Job Polarization and Earnings Inequality in the UK, 1975–2015', in Nolan, B., 'Generating Prosperity for Working Families in Affluent Countries', Oxford University Press, 2018.

**Schnepf, S.V.**, Volante, L., 'PISA and the future of Global Educational Governance', in Volante, L., 'The PISA Effect on Global Educational Governance', Routledge Research in Education Policy and Politics, New York: Routledge, 2018.





The following contributions appeared in **Crato, N.** and **Paruolo, P.** (Eds.), *Data-Driven Policy Impact Evaluation – How Access to Microdata is Transforming Policy Design*, Springer, 2019:

**Crato, N., Paruolo, P.**, ‘The Power of Microdata: An Introduction’.

**Deiana, C., Mazzarella, G.**, ‘Does the Road to Happiness Depend on the Retirement Decision? Evidence from Italy’.

**d’Hombres, B., Santangelo, G.**, ‘Use of Administrative Data for Counterfactual Impact Evaluation of Active Labour Market Policies in Europe: Country and Time Comparisons’.

**Langedijk, S., Vollbracht, I., Paruolo, P.**, ‘The Potential of Administrative Microdata for Better Policy-Making in Europe’.



# Awards and special mentions

### AWARDS

The paper 'What are you voting for? Refugee reception centres and voting in the 2016 Italian Referendum' by CC-ME colleagues, M. Bratti, C. Deiana, E. Havari, G. Mazzarella, E. C. Meroni, was awarded the 'Tarantelli Prize' by the Italian Association of Labour Economics (AIEL), as the best paper in Labour Economics for 2018.

### SPECIAL MENTIONS

The paper by A. Lapatinas and A. Litina, 'Intelligence and economic sophistication', published in *Empirical Economics*, 2018 was in the top-15 list of the most-mentioned articles from JRC published in 2018, calculated based on the Altmetric Attention Score.





