

Subrahmanyam P, McDonald D, Waliyar F, Reddy LJ, Nigam SN, Gibbons RW, Ramanatha Rao V, Singh AK, Pande S, Reddy PM and Subba Rao PV. 1995. Screening methods and sources of resistance to rust and late leaf spot of groundnut. Information Bulletin no. 47. Patancheru 502 324, Andhra Pradesh, India: International Crops Research Institute for the Semi-Arid Tropics. 24 pp.

Subrahmanyam P, Mehan VK and McDonald D. 1980. Research on fungal diseases of groundnut at ICRISAT. Pages 193–198 in Proceedings of the International Workshop on Groundnuts, 13–17 Oct 1980, ICRISAT Center, India. Patancheru 502 324, Andhra Pradesh, India: International Crops Research Institute for the Semi-Arid Tropics.

Subramanian S, Gurtu RS, Nageswara Rao RC and Nigam SN. 2000. Identification of DNA polymorphism in cultivated groundnut using random amplified polymorphic DNA (RAPD) assay. *Genome* 43:656–660.

Varman PV. 1999. A foliar disease resistant line developed through interspecific hybridization in groundnut (*Arachis hypogaea*). *Indian Journal of Agricultural Sciences* 69:67–68.

An Effective Method for Cloning of Partial MADS-box Genes Related to Flower Development in Groundnut

Yuan Mei¹, KK Sharma^{2*}, V Anjaiah², LI Shuangling¹, TAO Hai-teng¹, REN Yan¹ and YU Shan-lin¹

(1. Shandong Peanut Research Institute, Shandong, Qingdao 266100, China; 2. ICRISAT, Patancheru 502 324, Andhra Pradesh, India)

*Corresponding author: k.sharma@cgiar.org

The key genes in the developmental control of eukaryotes are often members of a very limited number of multigene families which encode transcription factors. Such homeobox genes have been thought to act as homeotic selector genes that are involved in differentiating different body regions from each other, probably by activating or repressing different sets of downstream genes in different parts of the body (Theissen et al. 2000). Recent studies have provided insight that inflorescence and flower development in higher eudicotyledonous flowering plants are determined by a network of regulatory genes which are organized in a hierarchical fashion (Theissen and Saedler 1998). In this, the late- and early-flowering genes are triggered by environmental factors such as day length, light quality and temperature.

The MADS-box is a highly conserved sequence motif found in the family of transcription factors. The conserved domain was recognized after the first four members of the family were identified as MCM1, AGAMOUS, DEFICIENS and SRF (serum response factor). The name MADS was constructed from the “initials” of these four “founder” proteins on which the definition of this gene family is based (Schwarz-Sommer et al. 1990). The MADS-box genes of plants are scattered throughout the entire plant genomes (Theissen et al. 2000) and by now, over a hundred MADS-box sequences have been found in species from all eukaryotes. MADS-domain proteins, like many other eukaryotic transcription factors, have a modular structural organization (Shore and Sharrocks 1995). The family of MADS-domain proteins has been subdivided into several distinct subfamilies. Most MADS-domain factors play important roles in plant developmental processes. Prominently, the MADS-box genes in flowering plants are the “molecular architects” of flower morphogenesis (Coen and Meyerowitz 1991, Angenent et al. 1995).

The MADS domain is by far the most highly conserved region of proteins (Purugganan et al. 1995). Based on the most conserved sequence region of the MADS box, a pair of degenerate primers were designed and used to amplify the genomic DNA of groundnut (*Arachis hypogaea*) in this study. The results indicate that an amplified fragment showed a high homology to the MADS-box protein of *Arabidopsis thaliana*. This study laid the foundation for obtaining the full length of MADS-box gene in groundnut.

Materials and methods

Seeds of groundnut cultivar JL 24 were planted in pots and maintained in the greenhouse. Genomic DNA was isolated from the young leaves by using the method described by Porebski et al. (1997) and Puchooa (2004).

Based on conserved amino acids found in the MADS domain of plant MADS-box genes, degenerate primers were designed to amplify the MADS-box gene homologues. The two forward primers used were MADS F1, 5'-ATGGG(ATCG)(AC)G(ATCG)GG(ATCG)AA(AG)AT(ACG)GA-3' and MADS F2, 5'-(ATCG)TG(CT)GA(CT)GC(ATCG)GA(AG)GA(AG)GT(ATCG)GC-3' and the two reverse primers were MADS R1, 5'-GC(ATCG)AC(CT)TC(ATCG)GC(AG)TC(CT)AA-3' and MADS R2, 5'-GC(ATCG)AC(CT)TC(ATCG)GC(AG)TC(CT)CA(ATCG)AG-3'. A 50- μ l PCR (polymerase chain reaction) contained 50 ng genomic DNA, 25 pmol

of each degenerate primer, 0.1 mM of each dNTP, and 1X Reaction Buffer (including 2.0 mM MgSO₄). Touchdown PCR was used to amplify the expected fragment. The reaction was heated at 94°C for three min, then 1.5 unit of *Taq* DNA polymerase (New England BioLabs) was added to each reaction tube. Ten cycles of

amplification were carried out, with denaturation at 94°C for 50 sec, annealing at 61°C to 50°C for 50 sec and extension at 72°C for 60 sec. The annealing temperature of the reaction was decreased 2°C every second cycle from 61°C to a “touchdown” at 50°C. Subsequently, all the reaction tubes underwent thirty cycles with the annealing temperature at 50°C, followed by a final extension at 72°C for 10 min. PCR products of the expected size were excised from agarose gels and cloned into pGEM-T easy vector (Promega). The clones were confirmed by PCR and restriction enzyme digestion prior to sequencing. The sequences were aligned with nucleotide sequences in GeneBank by using Megablast search program (<http://www.ncbi.nlm.nih.gov>).

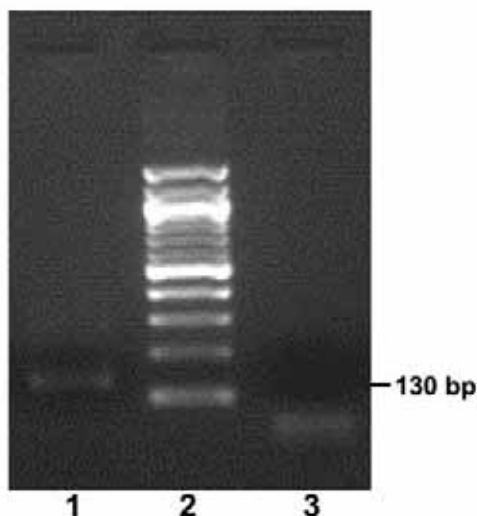


Figure 1. PCR amplification of fragment with expected size – Lane 1: JL 24; Lane 2: 100 bp DNA Ladder; Lane 3: Control (sterile distilled water).

Results and discussion

A 130 bp of the expected fragment named ApMADS1 was obtained by PCR amplification by using the primers MADSF1 and MADSR2 (Fig. 1). ApMADS1 was recovered from agarose gel and cloned into pGEM-T easy vector. Positive clones were confirmed by colony PCR and *Eco*RI digestion (Fig. 2) and sequenced. Figure 3 shows the nucleotide sequences and deduced amino-acid sequences. When alignment was carried out using the GeneBank nucleotide database and Megablast search program, ApMADS1 was 79% homologous to MADS-box transcription factor HAM137 from sunflower

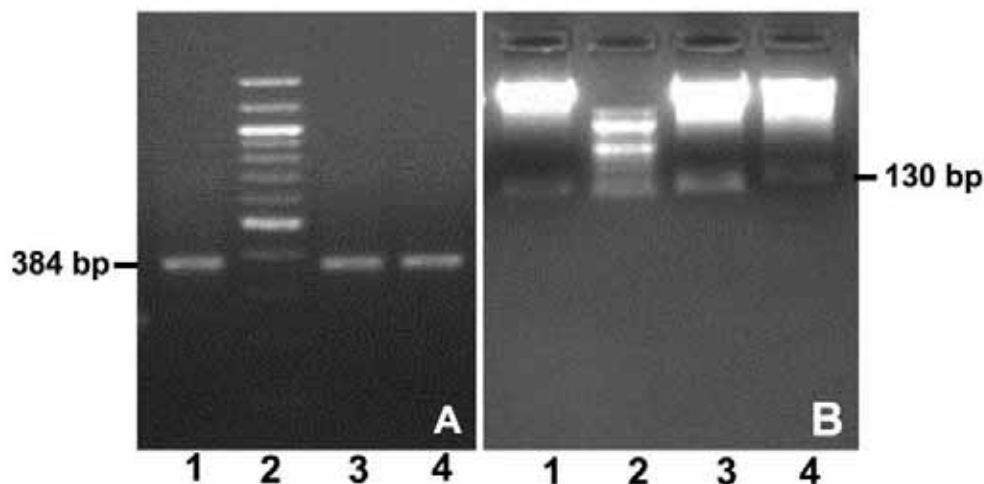


Figure 2. Clones confirmation by PCR amplification (A) using forward and reverse primer of M13 and *Eco*RI digestion (B) – Lanes 1, 3, 4: Clone containing expected fragment; Lane 2: 100 bp DNA Ladder.

ATGGGGCGTGGGAAGATAGAGATCAAGAGGATTGAGAACACTACAAATCGCCAAGTAACC
 M G R G K I E I K R I E N T T N R Q V T
 TTTTGCAAGCGCGGAAATGGTCTTCTCAAGAAAGCTTATGAGTTATCTGT**GCTGTGTGACG**
 F C K R G N G L L K K A Y E L S V L C D
CCGAGGTGG
 A E V

Figure 3. Nucleotide sequences and deduced amino acid sequences (shaded regions indicate the position of forward and reverse primers).

(*Helianthus annuus*). When discontinuous MegaBlast and Refseq_RNA were chosen, ApMADS1 showed identity ranging from 79% to 84% with 26 MADS-box mRNA. It can be concluded that ApMADS1 is a kind of MADS-box gene in groundnut.

Homology cloning method is effective and efficient, and used widely for gene cloning as confirmed by the result in this study. Compared with common homology cloning method, genomic DNA was used as the template for PCR amplification in this study. Therefore, this method is more simple and cheaper. Based on the sequence of ApMADS1, specific primers were designed and used for the amplification of 5' and 3' RACE. Some expected fragments from 5' and 3' RACE were obtained. Further work on the characterization of putative genes is currently ongoing. Our results indicated that the homology cloning method based on genomic DNA is feasible for MADS-box gene cloning in groundnut. The availability of such genes can be used to study the control of floral patterning thus providing an ideal genetic tool kit to study the diversification of flower architecture and its possible alteration through genetic engineering (Pavan Prakash and Kumar 2002).

Acknowledgments. This work was carried out at the Genetic Transformation Laboratory of ICRISAT, Patancheru, India. We thank D Srinivas Reddy for his useful suggestions and SN Nigam for helpful discussions. The funding support in part by the Natural Science Fund of Shandong Province and HarvestPlus Global Challenge Program on Biofortification is gratefully acknowledged.

References

Angenent GC, Franken J, Busscher M, van Dijken A, van Went JL, Dons HJ and van Tunen AJ. 1995. A novel class of MADS-box gene is involved in ovule development in petunia. *Plant Cell* 7:1569–1582.

Coen ES and Meyerowitz EM. 1991. The war of the whorls: genetic interactions controlling flower development. *Nature* 353:31–37.

Pavan Prakash A and Kumar P. 2002. PkMADS1 is a novel MADS box gene regulating adventitious shoot induction and vegetative shoot development in *Paulownia kawakamii*. *The Plant Journal* 29:141–151.

Porebski S, Bailey LG and Bernard RB. 1997. Modification of a CTAB DNA extraction protocol for plants containing high polysaccharide and polyphenol components. *Plant Molecular Biology Reporter* 15:8–15.

Puchooa D. 2004. A simple, rapid and efficient method for the extraction of genomic DNA from lychee (*Litchi chinensis* Sonn.). *African Journal of Biotechnology* 3:253–255.

Purugganan MD, Rounsly SD, Schmidt RJ and Yanofsky M. 1995. Molecular evolution of flower development: diversification of the plant MADS-box regulatory gene family. *Genetics* 140:345–356.

Schwarz-Sommer Z, Huijser P, Nacken W, Saedler H and Sommer H. 1990. Genetic control of flower development by homeotic genes in *Antirrhinum majus*. *Science* 250:931–936.

Shore P and Sharrocks AD. 1995. The MADS-box family of transcription factors. *European Journal of Biochemistry* 229:1–13.

Theissen G, Becker A, Di Rosa A, Kanno A, Kim JT, Munster T, Winter K-U and Saedler H. 2000. A short history of MADS-box genes in plants. *Plant Molecular Biology* 42:115–149.

Theissen G and Saedler H. 1998. Molecular architects of plant body plans. *Progress in Botany* 59:227–256.