

Bringing your user community with you ...a story of successful engagement!

Jenny Evans: Head of Research and Scholarly Communications

evansje@westminster.ac.uk @jennye

&

Nina Watts: Repository and Open Access Advisor

N.Watts01@westminster.ac.uk

University of Westminster

About the University of Westminster

4 campuses centrally located
in and around the London
area

Over 19,000 students from
169 countries

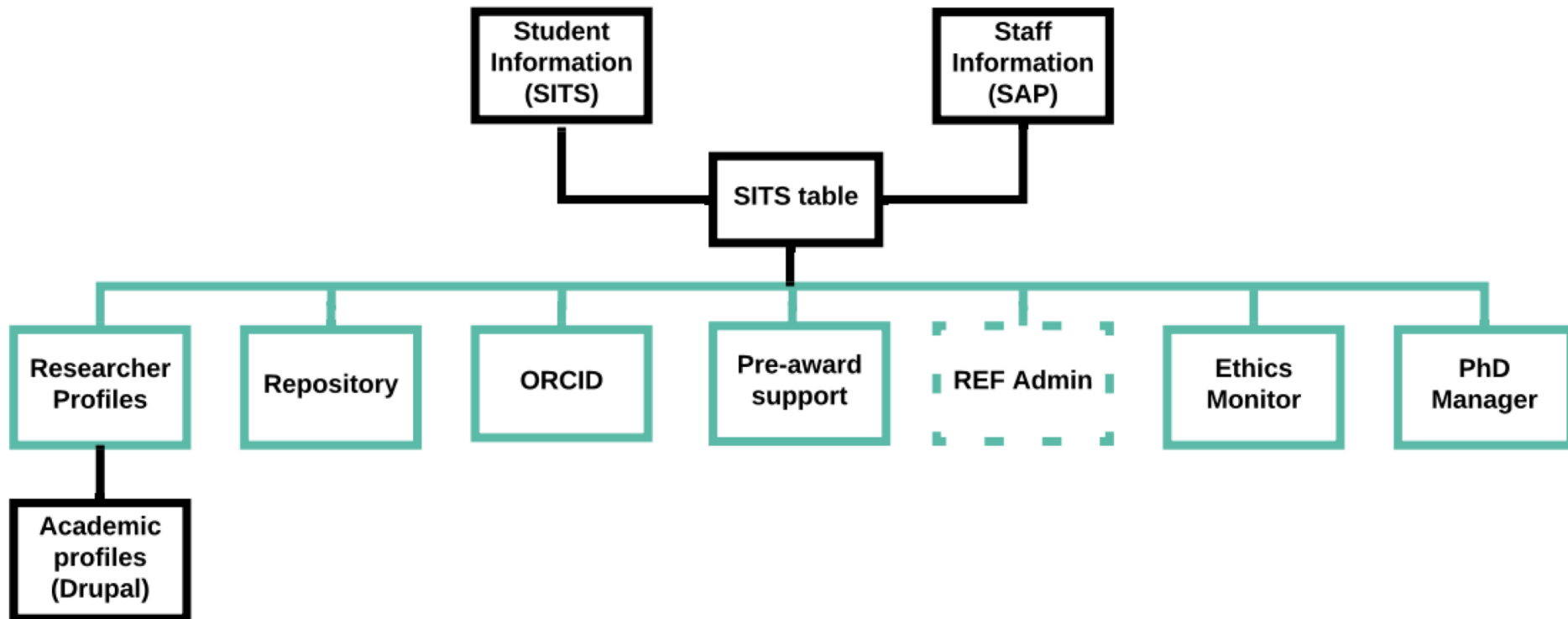
866 academic teaching staff,
680 visiting staff and 928
support staff



World leading research in Art and Design and Media and Communications;
Internationally excellent research in English, Architecture and the Built
Environment and Allied Health; Excellence in Psychology and
Neuroscience, Politics, Area Studies and Law (Research Excellence
Framework, 2014)

A Virtual Research Environment (VRE)

Haplo Research Manager



Non-text outputs in repositories

Barriers to engagement

Author, abstract, ISSN,
manuscript, supplementary
data...

Researchers in this community
often have to consider – how do I
make my research fit this? Or
actually – it isn't for me.

Even worse – you are not
interested in my research
because it doesn't fit into your
system!

The image shows a screenshot of a web form for submitting research outputs to a repository. The form is organized into several sections, each with a small circular icon to its left. The sections and their fields are:

- Title:** A large text input field.
- Type:** A dropdown menu.
- Authors:** Two text input fields. The first contains "Miss Jenny Evans" and the second contains "Evans, J.". A question mark icon is to the right.
- Abstract:** A large text area with a diagonal slash icon in the bottom right corner.
- Keywords:** A text input field with a question mark icon to the right.
- Article number:** A text input field.
- Journal:** A text input field with a pencil icon on the left.
- Journal citation:** Three text input fields labeled "Volume", "Number", and "Page range".
- ISSN:** A text input field with a question mark icon to the right.
- Year:** A text input field containing "yyyy".
- Publisher:** A text input field with a pencil icon on the left.
- Accepted author manuscript:** A text input field with a question mark icon to the right.
- File upload:** A grey box at the bottom with an upward arrow icon and the text "Drag files here or choose file..."

Public interface

Pre-migration

Welcome to WestminsterResearch

WestminsterResearch is the University of Westminster's online repository, containing the research output of the University's academic community.

Thousands of publications are currently listed in the archive, many of which are accompanied by a full-text e-print and hundreds more provide a link to the full-text on the publisher's website.

WestminsterResearch is available through open-access.




Further information and help pages are available at:

<http://www.westminster.ac.uk/westminsterresearch>

Please note: This is not a complete listing of research publications of the University of Westminster.

If you would like to know more about WestminsterResearch or are interested in submitting papers, please check the help pages link above or contact:

repository@westminster.ac.uk

 [Atom](#)  [RSS 1.0](#)  [RSS 2.0](#)

[Latest Additions](#)

View items added to the repository in the past week.

[Search Repository](#)

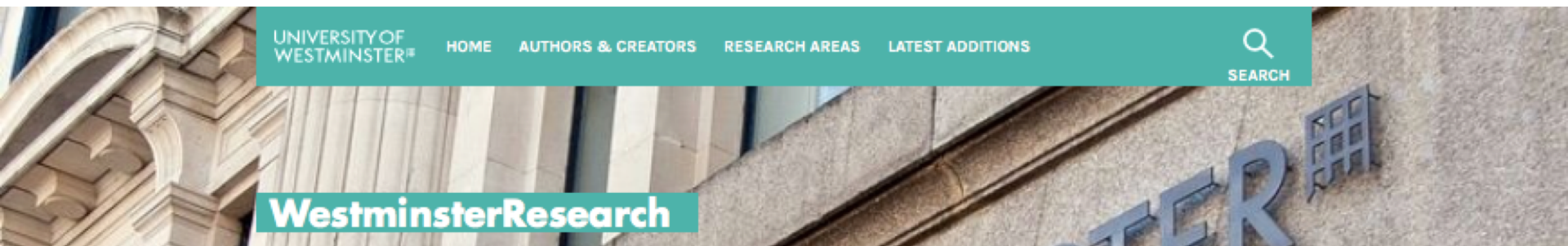
Search the repository using a full range of fields. Use the search field at the top of the page for a quick search.

[Browse Repository](#)

Browse the items in the repository by subject.

Public interface

Post-migration



UNIVERSITY OF
WESTMINSTER®

HOME

AUTHORS & CREATORS

RESEARCH AREAS

LATEST ADDITIONS

SEARCH

WestminsterResearch

The online repository of research outputs from the University of Westminster's academic community.

WestminsterResearch makes information about thousands of publications (many accompanied by the full text or a link to the full text on the publishers website) available through open access.

If you would like to know more about WestminsterResearch or are interested in submitting research outputs, please see: [Open Access: WestminsterResearch](#) or contact repository@westminster.ac.uk.

This repository supports OAI 2.0 with a base URL of
<https://westminsterresearch.westminster.ac.uk/oai2>

[Repository Policies](#) [Browse by year](#)

Latest additions

The Changing Geopolitics of Global Communication

Thussu, D.K. 2021. *The Changing Geopolitics of Global Communication*. London Routledge.

Architecture and its Imprint: Building, Concepts, Publication

Peckham, A. 2021. *Architecture and its Imprint: Building, Concepts, Publication*. London Routledge.

Human Security and International Law: the role of the United Nations

McClean, E. 2021. *Human Security and International Law: the role of the United Nations*. London Routledge.

Workers' Photography in the East End

Stevens, S. 2020. *Workers' Photography in the East End*.

Agile processes

In theory

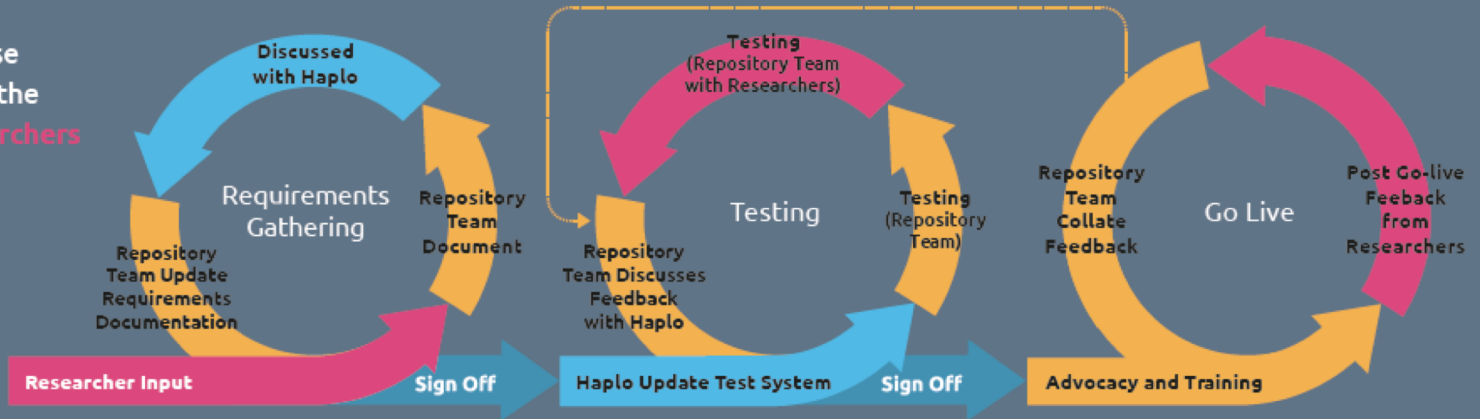


Image by [Dirk Wouters](#) from [Pixabay](#)

Agile processes

In practice

Iterative cycles and close collaboration between the repository team, researchers and Haplo were key to successful deployment.



Listen!

What are their drivers?



Portfolio for
Research
Excellence
Framework,
2014

Create research and document the associated research process and collect these together in a portfolio that is updated over time

Work in partnership

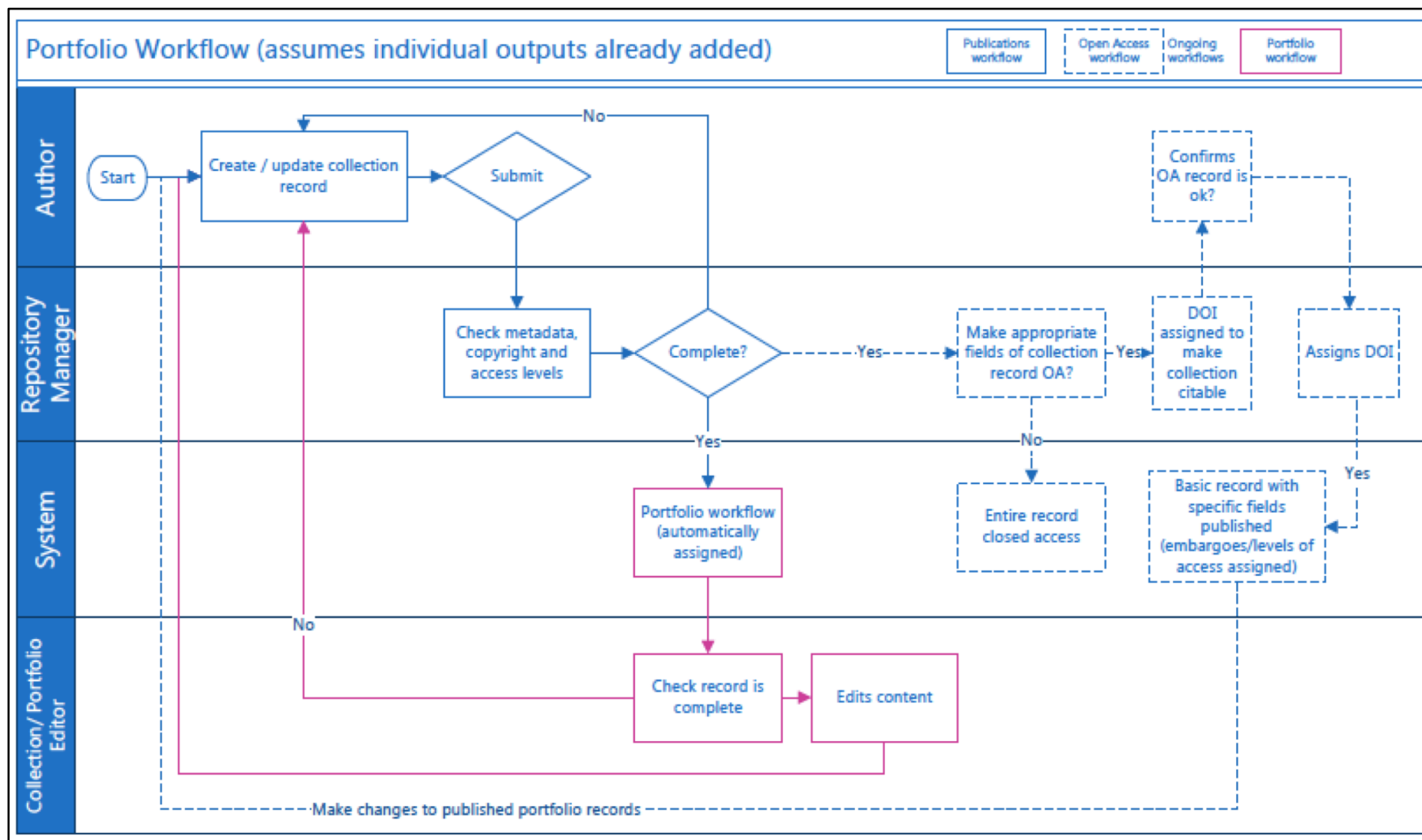
With both research community and supplier



Image by [rawpixel](#) from [Pixabay](#)

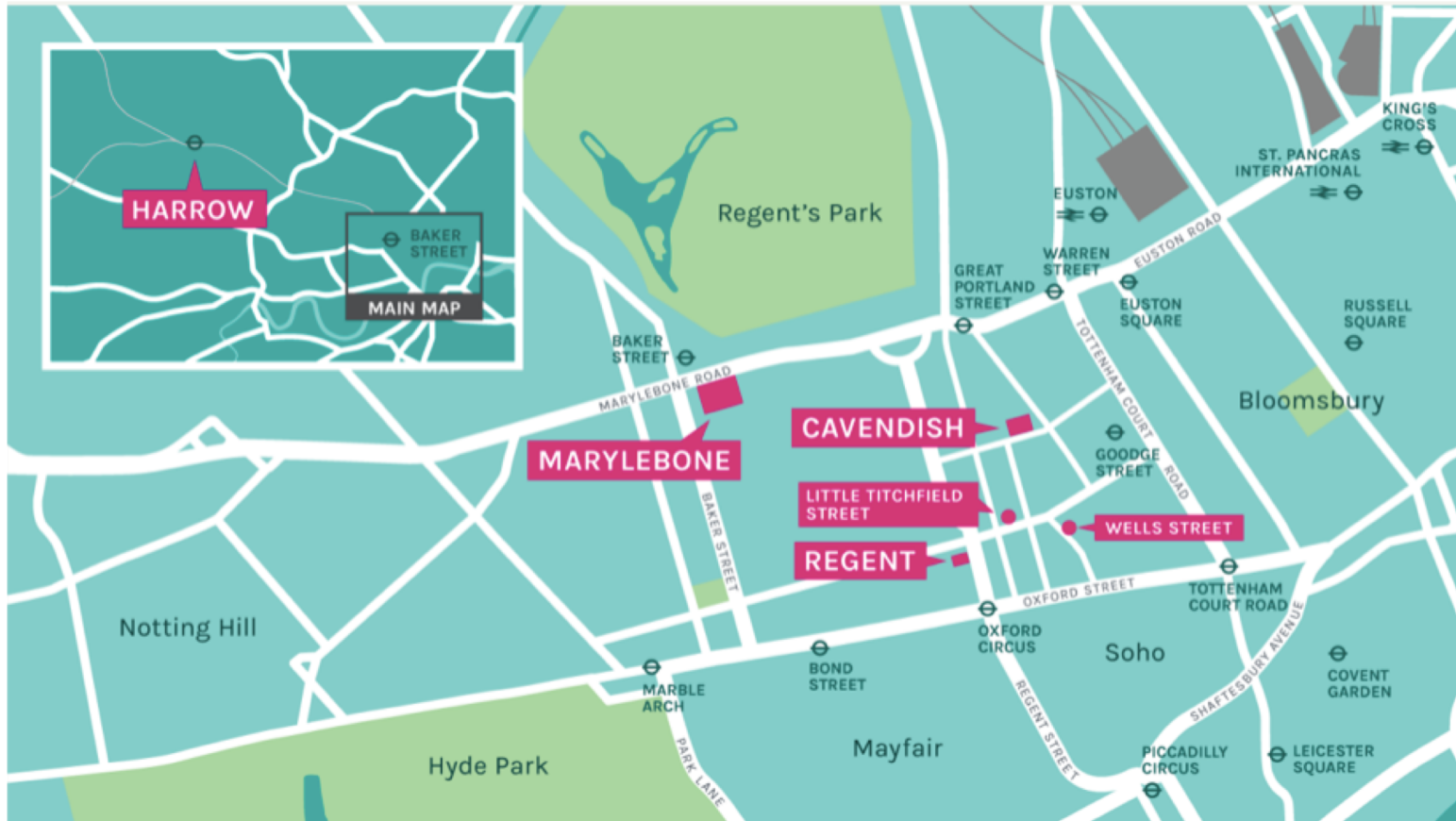
Workflows and roles

Using visualisations to document discussions and reflect updates



Face to face meetings (including testing)

In their space



It's all about language!

“We want to be able to select non-text outputs”

- Text based output
- Non-text based output
- Portfolio of outputs

New output

- **Artefact**
An artist's work, product, or creation. May include work originating from design or architectural practices
- **Composition**
A sound recording or the score and/or description of a piece of music
- **Design**
Depiction or outline of a practice-based creation, e.g. fashion design, costume, stage design, interior, typeface, blueprint
- **Digital or visual media**
Examples include a digital photograph or visual image, a digital video, a sound recording
- **Exhibition**
An exhibition featuring your work, or one that you have curated
- **Performance**
A realisation of your work such as an art performance, reading, or staged play

New Book: Miss Jenny Evans

Please complete this form as fully as possible. Fields may be left blank for information that is not applicable to this portfolio of outputs. The University repository will be alerted to new or edited portfolios of outputs.

● Title

● Type
✓ Exhibition catalogue
Scholarly edition
Miss Jenny Evans Evans, J.

● Editors
 eg Smith, J.B.

● Abstract

Non-text outputs

Exhibition output type

[Back](#)

New Exhibition

Please complete this form as fully as possible. Fields may be left blank for information that is not applicable to this portfolio of outputs. The University repository will be alerted to new or edited portfolios of outputs.

[Preview](#) [Save](#)

- Title of work**
- Creators**?
- Collaborators**?
- Description**
- Date**

[Home](#)

[Calendar](#)

University of Westminster
Design, Creative and Digital Industries
Liberal Arts and Sciences
Westminster Business School

Research groups and clusters

Committees
Upcoming meetings

Guides

REF Units of Assessment

File

↑ Drag files here or [choose File...](#)

• Image credit

• Media type

✓ -- choose --
Audio
Image
Video

• License

[click to set](#)

• File Access Level

Closed (closed metadata and files)
 Controlled (open metadata, closed files)
 Open (open metadata and files)

• Exhibition title

• Keywords

• Publisher or commissioning body

• Project

• Funder

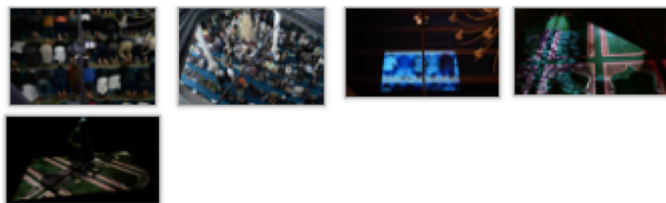
An exhibition record

UNIVERSITY OF WESTMINSTER [HOME](#) [AUTHORS & CREATORS](#) [RESEARCH AREAS](#) [LATEST ADDITIONS](#) [SEARCH](#)

Exhibition

Jamaat (2018)

Marsh, J. 2018. *Jamaat (2018)*. Brick Lane Mosque



CREATORS	Marsh, J.
COLLABORATORS	Brick Lane Jamme Masjid community Inclusive Mosque Initiative
CINEMATOGRAPHER	Jonathan Fuller-Rowell
DESCRIPTION	<p>Assembly is a site-specific research project made in collaboration with Brick Lane Jamme Masjid community. <i>Jamaat (2018)</i> (translated from Arabic meaning assembly) was made and exhibited respecting the religious and cultural rules of the mosque. The mechanical recording device was used as an anonymous eye; in a culturally sensitive environment such as the mosque, the objectivity of the machine allowed entry to a place that is forbidden for a female non-Muslim.</p> <p>The camera was not permitted to film in front of the people praying, nor could it show their faces. Subsequently, an</p>



Explore this collection

[Assembly: Artist Talk at Closeup Film Centre](#)
Marsh, J. 2018. Assembly: Artist Talk at Closeup Film Centre. Julie Marsh.

[Assembly Exhibition Catalogue](#)
Marsh, J. 2018. Assembly Exhibition Catalogue. London Julie Marsh.

[Salat \(2016\)](#)
Marsh, J. 2016. Salat (2016). Birmingham Central Mosque

Share this

 [Tweet](#)  [Email](#)

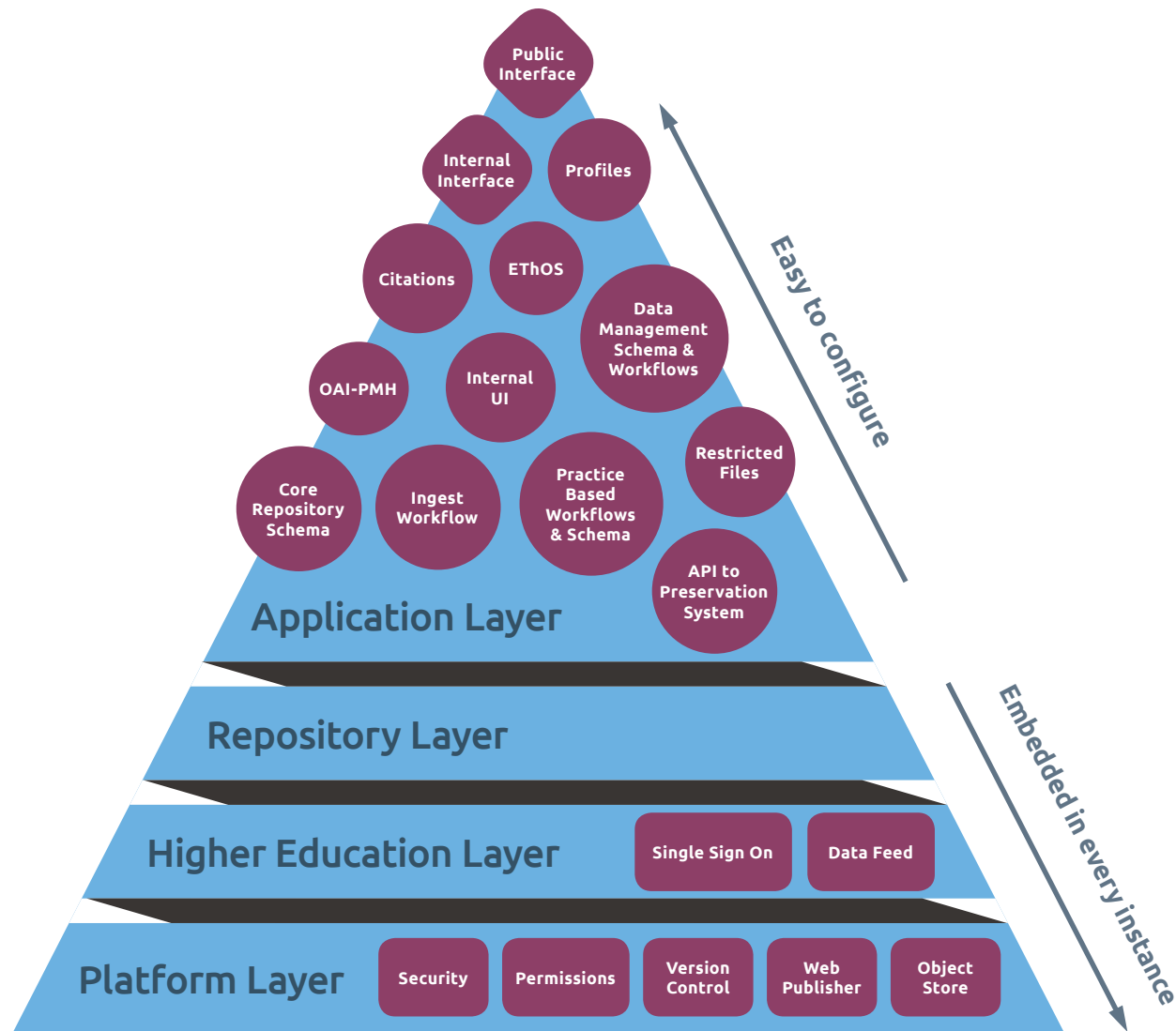
How was this possible?

The ability to set up an alias

The problem? You have lots of types of outputs in a single repo, and some types express the same/similar concepts with different name. E.g. Author & Creator. But you want a search for things authored by an author to include items where the type needs to call it creator.

The solution? So you use an "alias". Store it in the author attribute, but display and maybe output in machine to machine metadata as creator. Then all the searches for the normal case work, and each type is described accurately.

Repository architecture



Portfolios

Collect individual outputs together

The screenshot shows a digital repository interface for 'Transforming the University of Westminster Repository'. The page includes a navigation sidebar on the left with links for Home, Calendar, University of Westminster (Design, Creative and Digital Industries, Liberal Arts and Sciences, Westminster Business School), Research groups and clusters, Committees (Upcoming meetings), Guides, and REF Units of Assessment. The main content area displays the repository's title, creators (Evans, J., Renner, T. and Tribble, P.), and a detailed description. A 'Portfolio items' section lists several documents, with the first one, 'Keeping Data Safe: how to implement a secure repository', circled in red. To the right of the main content, there are buttons for 'View in public repository' and 'REF template', both also circled in red. The 'STATUS' section indicates the record is 'Complete - Open' and 'Access record released'. The 'File' section shows a screenshot from 2019-01-15 with download and preview options. The 'Tasks' section at the bottom lists recent activities, such as 'Jenny Evans submitted the record' and 'Nina Watts added a note: Released as open access.'.

Transforming the University of Westminster Repository

Copy as new item Change output type

Home Portfolio

Calendar

University of Westminster
Design, Creative and Digital Industries
Liberal Arts and Sciences
Westminster Business School

Research groups and clusters

Committees
Upcoming meetings

Guides

REF Units of Assessment

Title Transforming the University of Westminster Repository

Creators Evans, J., Renner, T. and Tribble, P.

Description This portfolio brings together relevant work relating to the development of the University's new repository, the result of close collaboration between Westminster and Haplo. Key features of the repository include a single solution for text-based and non-text based outputs, dynamic portfolios and managed levels of access to files.

STATUS
Complete - Open
Access record released

REPOSITORY
View in public repository
REF template

Portfolio items

Keeping Data Safe: how to implement a secure repository
Identifying the Different People and Systems Involved and Potential Areas for Risk
Implementing a next-gen repository mid-REF cycle...madness or a stroke of genius?
A Single Open Source Repository For Every Use Case
Building an All Haplo repository: A partnership between institution and supplier, in collaboration with researchers and the user community

Year 2019

Keywords repositories
open access
practice-based arts research
non-text outputs

File
Screen Shot 2019-01-15 at 12.18.25.png
Download Versions
Preview

File Access Level Open (open metadata and files)

Tasks

Deposit

Jenny Evans submitted the record 15 Jan 2019, 12:25

Nina Watts added a note: Released as open access. Nina 15 Jan 2019, 16:05

Nina Watts confirmed the record as 15 Jan 2019, 16:05

Portfolio in the public view

UNIVERSITY OF WESTMINSTER® HOME AUTHORS & CREATORS RESEARCH AREAS LATEST ADDITIONS

CURRENT STUDENTS ADMIN

Portfolio

Assembly: performing the materiality of Muslim prayer spaces

Marsh, J. *Assembly: performing the materiality of Muslim prayer spaces.*



SHOW MORE ▾

CREATORS	Marsh, J.
COLLABORATORS	Birmingham Central Mosque Brick Lane Jamme Masjid Inclusive Mosque Initiative
DESCRIPTION	Assembly is a body of work and ongoing research, which performs the materiality of Muslim prayer space. Assembly is a series of site-specific installations, comprising of 1:1 scaled moving floor projections with 5.1-surround sound. As the audience enters each prayer site the projection is activated, revealing a pre-recorded film of congregational prayer. The

UNIVERSITY OF WESTMINSTER® HOME AUTHORS & CREATORS RESEARCH AREAS LATEST ADDITIONS

Assembly Exhibition Catalogue

Marsh, J. 2018. *Assembly Exhibition Catalogue*. London Julie Marsh.

Explore this collection

[Jamaat \(2018\)](#)
[Marsh, J. 2018. Jamaat \(2018\)](#)

UNIVERSITY OF WESTMINSTER® HOME AUTHORS & CREATORS RESEARCH AREAS LATEST ADDITIONS

Assembly: Artist Talk at Closeup Film Centre

Marsh, J. 2018. *Assembly: Artist Talk at Closeup Film Centre*. Julie Marsh.

Explore this collection

UNIVERSITY OF WESTMINSTER® HOME AUTHORS & CREATORS RESEARCH AREAS LATEST ADDITIONS

Jamaat (2018)

Marsh, J. 2018. *Jamaat (2018)*. Brick Lane Mosque

Explore this collection

[Assembly: Artist Talk at Closeup Film Centre](#)
[Marsh, J. 2018. Assembly: Artist Talk at Closeup Film Centre](#)
[Julie Marsh.](#)

[Assembly Exhibition Catalogue](#)
[Marsh, J. 2018. Assembly Exhibition Catalogue](#)
[London Julie Marsh.](#)

[Salet \(2016\)](#)
[Marsh, J. 2016. Salet \(2016\)](#)
[Birmingham Central Mosque](#)

Share this

Tweet Email

Assembly is a site-specific research project made in collaboration with Brick Lane Jamme Masjid community, Jamaat (2018) (translated from Arabic meaning assembly) was made and exhibited respecting the religious and cultural rules of the mosque. The mechanical recording device was used as an anonymous eye; in a culturally sensitive environment such as the mosque, the objectivity of the machine allowed entry to a place that is forbidden for a female non-Muslim.

The camera was not permitted to film in front of the people praying, nor could it show their faces. Subsequently, an

Advocacy and training

Ongoing testing and feedback post-go live



Lessons learned

Can be a full time job at times

You will need longer than you think!

Workflow diagrams are really helpful for articulating requirements

There will always be more metadata requirements

Have to draw a line on functionality and prioritise what's important!

Success?



Thank you!

Jenny Evans

evansje@westminster.ac.uk
@jennye

Nina Watts

N.Wattso1@Westminster.ac.uk

University of Westminster

<https://westminsterresearch.westminster.ac.uk/item/q9x2v/transforming-the-university-of-westminster-repository>

Portfolio

Transforming the University of Westminster Repository

Evans, J., Renner, T. and Tribble, P. 2019. *Transforming the University of Westminster Repository*.



CREATORS

Evans, J., Renner, T. and Tribble, P.

DESCRIPTION

This portfolio brings together relevant work relating to the development of the University's new repository, the result of close collaboration between Westminster and Haplo. Key features of the repository include a single solution for text-based and non-text based outputs, dynamic portfolios and managed levels of access to files.

YEAR

2019

KEYWORDS

repositories

open access

practice-based arts research

non-text outputs

FILE



Screen Shot 2019-01-15 at 12.18.25.png