



This is a repository copy of *Productivity, infrastructure, and urban density – an allometric comparison of three European city-regions across scales*.

White Rose Research Online URL for this paper:  
<http://eprints.whiterose.ac.uk/147326/>

Version: Accepted Version

---

**Article:**

Arbabi, H. [orcid.org/0000-0001-8518-9022](https://orcid.org/0000-0001-8518-9022), Mayfield, M. and McCann, P. (2019) Productivity, infrastructure, and urban density – an allometric comparison of three European city-regions across scales. *Journal of the Royal Statistical Society: Series A*. ISSN 0964-1998

<https://doi.org/10.1111/rssa.12490>

---

This is the peer reviewed version of the following article: Arbabi, H. , Mayfield, M. and McCann, P. (2019), Productivity, infrastructure and urban density—an allometric comparison of three European city regions across scales. *J. R. Stat. Soc. A.* , which has been published in final form at <https://doi.org/10.1111/rssa.12490>. This article may be used for non-commercial purposes in accordance with Wiley Terms and Conditions for Use of Self-Archived Versions.

**Reuse**

Items deposited in White Rose Research Online are protected by copyright, with all rights reserved unless indicated otherwise. They may be downloaded and/or printed for private study, or other acts as permitted by national copyright laws. The publisher or other rights holders may allow further reproduction and re-use of the full text version. This is indicated by the licence information on the White Rose Research Online record for the item.

**Takedown**

If you consider content in White Rose Research Online to be in breach of UK law, please notify us by emailing [eprints@whiterose.ac.uk](mailto:eprints@whiterose.ac.uk) including the URL of the record and the reason for the withdrawal request.



[eprints@whiterose.ac.uk](mailto:eprints@whiterose.ac.uk)  
<https://eprints.whiterose.ac.uk/>

# Productivity, Infrastructure, and Urban Density – an Allometric Comparison of Three European City-Regions across Scales

Hadi Arbabi<sup>1</sup> | Martin Mayfield<sup>1</sup> | Philip McCann<sup>2</sup>

<sup>1</sup>Department of Civil & Structural Engineering, The University of Sheffield, Sheffield, S1 3JD, UK

<sup>2</sup>Management School, The University of Sheffield, Sheffield, S10 1FL, UK

## Correspondence

Hadi Arbabi, Department of Civil & Structural Engineering, The University of Sheffield, Sheffield, S1 3JD, UK  
Email: h.arbabi@sheffield.ac.uk

## Funding information

Agglomeration-based arguments citing Dutch and German city-regions have been a primary driver in advocating inter-city transport strategies in the north of England. In this paper, we adopt an allometric urban model investigating the applicability and transferability of these transport-led agglomerative strategies promoted to address England's regional economic under-performance. This is undertaken through a comparative study of the size-cost performance balance of three city-regions and the overall urban networks in the Netherlands, Germany, and England and Wales using city units defined at different spatial scales. While our results support a case for better mobility and transport comparing the three urban networks regardless of the spatial scales, comparisons of specific city-regions indicate a more nuanced interplay of productivity, mobility infrastructure, and urban density.

## KEYWORDS

agglomeration, urban scaling, transport, densification, poly-centric regions

## 1 | INTRODUCTION

Following an agglomeration economies line of reasoning, larger functional urban areas are thought to be associated with higher economic productivities and infrastructural efficiencies. The higher comparative productivities and efficiencies of larger cities are thought to be due to their mobility and transport cost advantages as these are instrumen-

tal by facilitating the mixing of people, ideas, and goods (Glaeser, 2010). Therefore, from an agglomeration-based perspective, increased urban population and mobility are expected to enhance economic performance. These expectations have been used in support of policy arguments that champion the creation of poly-centric regions through the implementation of inter-city transport infrastructure. These arguments frame the inter-city transport as a means to increase regional economic output and productivity with the transport infrastructure of such metropolitan regions as the Dutch the Randstad and the German Rhine-Ruhr given as typical examples in Europe (Burger et al., 2015).

In an English context, better inter-city transport links have been argued in response to the perceived productivity gap that has historically existed between the country's north and southeast. The north of England, unlike the southeast and London in particular, is comprised of cities that by international standards are suffering significant economic under-performance despite their comparable urban size (Centre for Cities, 2015). These are reported to be symptomatic of a historic regional economic performance gap unique to the UK (Dorling, 2010; McCann, 2016). The most recent incarnation of these infrastructural plans, the so-called 'Northern Powerhouse', was launched in 2014 by the then Chancellor of the Exchequer who articulated the argument as offering the northern cities the opportunity to collectively rival global cities such as London or Tokyo by providing them with improved inter-city transport links (Osborne, 2014). While such arguments are inherently reliant on stylised agglomeration-type arguments, current transport schemes under consideration in England have particularly been influenced by and rely on examples drawn from the Randstad and Rhine-Ruhr. The case made for such interventions by the relevant transport and infrastructure authorities draws specifically on the examples of the German and Dutch city-regions when promoting a northern city-region that is connected through inter-city passenger rail links with decreased journey times and increased service frequency and capacity (Transport for the North, 2015; National Infrastructure Commission, 2016). Lacking from these arguments, however, has been a consideration of the compatibility of the German and Dutch case studies when assessing such developments in the north of England.

The aim of this paper is then to explore the compatibility and transferability of such transport-driven agglomeration measures as borrowed from the Randstad and Rhine-Ruhr within an agglomeration theory-compatible framework. We do so through utilising an allometric framework adopting and applying Bettencourt's social reactor model (Bettencourt, 2013). The model enables an evaluation of the optimality of the urban size-cost performance, i.e. the balance between economic output and mobility costs incurred in its generation, within a system of cities. This in turn allows us to discuss the infrastructural interventions needed to reach this size-cost optimality and examine the pertinence of the continental examples to the cities in the north of England. The broader contribution of the study here, however, lies in its additional focus on these questions at different geographical scales and urban boundary definitions. A further novelty of such a comparison is in its ability to facilitate an interrelated examination of economic performance and productivity, transport connectivity and mobility, and urban population and density.

As previously stated, the Randstad and Rhine-Ruhr are often cited as typical examples of productive city-regions with strong inter-city transport links. Were the key differences underlying the higher productivities of the Randstad and Rhine-Ruhr their inter-city transport enabling such agglomeration economies, then in an allometric framework as that of Bettencourt, we would expect distinct differences between the Northern Powerhouse and its continental comparators. Indeed, as our results will show, the overall English and Welsh urban networks do in fact exhibit a more pronounced systemic lack of adequate mobility when compared with their Dutch and German counterparts. This could be taken to support arguments in favour of improvements to transport and mobility infrastructure as a means to boost economic productivity by enforcing increasing returns to scale for larger urban units. However, the results of our region-specific comparison highlight more nuanced differences between the three regions where the higher productivity of the Randstad and Rhine-Ruhr does not seem to be replicable in the north of England through an imitation of their inter-city transport infrastructure alone.

The rest of this paper is structured as follows. The next section provides a background to urban allometry and scaling models and outlines the methods and data implemented in the study. This includes a summary description of Bettencourt's model derivation.<sup>1</sup> We then present a scaling comparison of the urban performance for Germany (DE), the Netherlands (NL), and England and Wales (EW) in the third section before proceeding with the comparison of the three city-regions and their constituting city units. Finally, a brief discussion of these national and regional comparisons and their implications are presented followed by conclusions in the last section.

## 2 | URBAN SCALING AND INFRASTRUCTURAL NEEDS

Recent empirical observations of population dependence of various urban characteristics are wide ranging. The consistency of these in the form of allometric power-laws has prompted a notion of 'universal features' among cities (Bettencourt and West, 2010). The generic formulation of such power-law relationships can be seen as

$$F(N) = F_0 N^\beta \quad (1)$$

or alternatively log-transformed as

$$\ln F(N) = \ln F_0 + \beta \ln N \quad (2)$$

where  $F$  denotes any urban indicator of choice, e.g. economic output, urbanised area, CO2 emissions, etc.,  $F_0$  a prefactor describing the baseline prevalence of the indicator,  $N$  the urban population count, and  $\beta$  the scaling exponent determining the scaling regime. Empirical evidence from the American, Chinese, and German urban networks points to recurring values of  $\beta$  whereby infrastructural indicators, e.g. urbanised area, length of roads, etc., grow sub-linearly with population,  $\beta \approx \frac{2}{6}$ , while those representing wealth and information, e.g. GDP, exhibiting super-linear regimes,  $\beta \approx \frac{7}{6}$  (Bettencourt et al., 2007).

Taking shape based on these empirical observations and gaining wider traction, is a new Science of Cities that has sought to codify these observations in the form of structural and/or statistical models (Batty, 2012). There are several allometric urban models explaining empirical observations and deriving power-law relationships. These range from those using probabilistic considerations of urban population and their characteristics (Gomez-Lievano et al., 2016) to network conceptualisations of urban population and their connectivity embedded geographically (Yakubo et al., 2014; Sim et al., 2015). As previously mentioned, among the various existing urban scaling models, Bettencourt's social reactor model includes an explicit consideration of mobility effects and size-cost balances. We first outline the model's setup before providing a concise description of the input data used.

### 2.1 | Bettencourt's social reactor model

In setting up an idealised scaling model of cities, Bettencourt (2013) starts from four simple assumptions:

1. the average aggregate socio-economic product is a linear function of sum of all local interactions (Jones, 2016),
2. urban population is mixing uniformly and that each individual has the minimum resources needed to fully travel and experience the city (Glaeser and Kohlhase, 2003),
3. individual baseline production is bounded and is not a function of city size (Szüle et al., 2014),

4. and finally, the urban infrastructure is embedded as a hierarchical network that keeps all individuals connected through its incremental and decentralised growth (Samaniego and Moses, 2008).<sup>2</sup>

The model also parametrises and expresses the geometry of the city and the average inhabitant's travel path through their Hausdorff fractal dimensions,  $D$  and  $H$  respectively. Out of the four, the first assumption can be formalised as

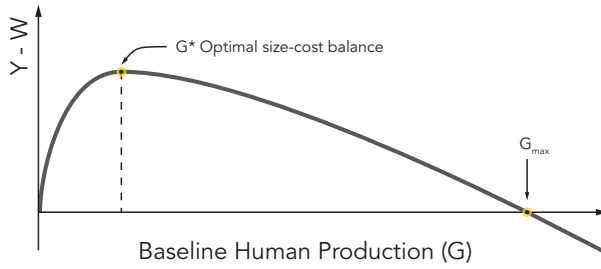
$$Y = \bar{g} a_0 l \frac{N^2}{A_n} \quad (3)$$

where  $Y$  is the average economic output,  $\frac{N^2}{A_n}$  the density to the upper limit of total encounters possible ( $N \times (N-1) \approx N^2$  for large populations) over the urbanised area  $A_n$ ,  $a_0 l$  the average effective interaction cross-section and travel path of an individual respectively and hence the average effective area, and  $\bar{g}$  the average encounter output. The product  $\bar{g} a_0 l$ , hereafter referred to as  $G$ , describes the baseline human production indicated in the third assumption and embodies the average sum total of individual output independent of population size ( $\frac{dG}{dN} \approx 0$ ). The second assumption then derives a generic scaling for cities' volumetric area by equating per capita mobility costs, i.e. cost of travel, and per capita economic output, i.e. minimum resources for travel. Bettencourt additionally develops a scaling relationship for the energy dissipated over the urbanised area,  $A_n$ , moving the population, goods and services, and enabling the generation of  $Y$  by treating the infrastructure network as parallel resistors. Put together, the four assumptions result in

$$\begin{cases} Y(N) = Y_0 N^{1 + \frac{H}{D(D+H)}} \\ W(N) = W_0 N^{1 + \frac{H}{D(D+H)}} \\ A_n(N) = A_{n0} N^{1 - \frac{H}{D(D+H)}} \end{cases} \quad (4)$$

where  $Y$ ,  $A_n$ , and  $W$  are the average expected economic output, urbanised area, and mobility costs respectively,  $Y_0$ ,  $A_{n0}$ ,  $W_0$  the baseline prevalence of  $Y$ ,  $A_n$ , and  $W$  all functions of  $G$ ,  $N$  the population size. As can be seen, the exponents  $1 \pm \frac{H}{D(D+H)}$  are functions of the city geometry,  $D$ , and the geometry of the average individual's path,  $H$ . This in effect means that the exponents characterise, by proxy, the average level of mobility and accessibility across the urban network.<sup>3</sup>

Imposing real-life geometric constraints puts the fractal dimension of the city,  $D$ , somewhere in the range [2, 3]. Similar considerations would result in the geometric dimension of the travel path,  $H$ , to be confined to  $[0, D)$  resulting in a range of  $[0, \frac{1}{4})$  for  $\frac{H}{D(D+H)}$ . As such, in agreement with the agglomeration theory, the model expects increasing output productivities and infrastructural efficiencies for larger cities, i.e. a super-linear scaling of  $Y$  and sub-linear scaling of  $A_n$ . In developing a theoretical and idealised approximation of urban networks, city geometry can be taken to be 2-dimensional,  $D = 2$ , while Bettencourt's second assumption regarding full accessibility of the city implies a fully linear average travel path,  $H = 1$ . Consequently Bettencourt's theoretical expectation of ideal urban networks is comprised of a super-linear scaling for economic output with the exponent  $\beta_Y = \frac{7}{6}$  and a sub-linear scaling of urbanised area with the exponent  $\beta_{A_n} = \frac{5}{6}$  in agreement with most empirical observations for various urban networks in the United States, East Asia, and Europe (Bettencourt et al., 2007; Bettencourt, 2013; Bettencourt and Lobo, 2016). Furthermore, since these elasticities are increasing functions of  $H$ , a lack of adequate mobility and access diminishes super- and sub-linear effects resulting in close to linear exponents. Such inadequate levels of mobility,  $H < 1$ , can be seen as mobility patterns where individuals' access is limited and constrained to disconnected patches within the city. Finally, Bettencourt formalises the urban size-cost performance balance as the economic output less its mobility



**FIGURE 1** Schematic illustration of cost-size balance,  $Y - W$ , as a function of the baseline human production  $G$ .

costs,  $Y - W$ . As both  $Y$  and  $W$  are functions of the baseline human production  $G$ , the size-cost balance becomes an optimisation exercise with regards to the value of  $G$ , Figure 1.<sup>4</sup>

As can be seen,  $Y - W$  balance grows for increasing values of  $G$  in the range  $[0, G^*)$  reaching its maximum at  $G^*$ . However, for increasing values of human production beyond  $G^*$  the cost-size balance shrinks resulting in an increasingly unstable city as the costs associated with the mobility processes overwhelm the economic success of the city such that for  $G > G_{max}$  the city would break down to smaller functional urban zones. Bettencourt posits that, given an urban network with relatively large number of cities, one would expect to find the statistics of  $G$  estimated for all cities to hover close to  $G^*$  as cities strive to maintain an optimal cost-size balance.<sup>5</sup> Additionally, referring back to the comprising elements within  $G(\equiv \bar{g}a_0l)$ , the model provides categorical solutions for cities where the cost-size balance deviates from the optimum. Where  $G < G^*$ , cities fall short of their economic potential which can be addressed through interventions that seek to increase the effective  $a_0l$ , i.e. improvement to mobility and accessibility, enabling more urban interaction and hence higher economic output. In contrast, for cities where the economic success of the city has resulted in larger than desired urbanised expansion,  $G > G^*$ , densification of the built area provides a strategy that would maintain the number of urban interactions and reduce travel paths and hence associated mobility costs concurrently.

## 2.2 | Scaling normalisation and inter-system comparison

As outlined in the previous section, the overall status of mobility in an urban system and infrastructural needs of individual cities can be gleaned by investigating the population scaling of economic output and urbanised area across cities within the same connected urban system. An empirical estimate of the baseline human production for each city can easily be estimated through a rearrangement of Equation 3

$$G_i = \frac{Y_i \times A_{ni}}{N_i^2} \quad (5)$$

where  $G_i$  is the human production estimated for city  $i$  and  $Y_i$ ,  $A_{ni}$ , and  $N_i$  are the economic output, urbanised area and population of city  $i$  respectively. Exact calculation of the optimal  $G^*$ , however, requires knowledge of values for the model's various internal parameters, e.g. transport costs. Nevertheless, without needing to fully estimate these, a system-wide average  $G^*$  can be obtained by substituting the scaling expressions of  $Y$  and  $A_n$  in Equation 5

$$G^* = \frac{Y_0 N^{1 + \frac{H}{D(D+H)}} \times A_{n0} A_n^{1 - \frac{H}{D(D+H)}}}{N_i^2} = Y_0 A_{n0} \quad (6)$$

where  $Y_0$  and  $A_{n0}$  are the system-wide prevalence of economic output and urbanised area respectively. Estimating an idealised optimal  $G^*$ , however, requires an idealised system as a point of reference. For this, we estimate idealised  $Y_0$  and  $A_{n0}$  employing constant gradient OLS fits on the linearised form of Equation 4 using Bettencourt's theoretical ideal scaling exponents of  $\beta_Y = \frac{7}{6}$  and  $\beta_{A_n} = \frac{5}{6}$ .

To enable a cross-country comparison, we follow Bettencourt and Lobo (2016) by normalising economic output and urbanised area in each urban system. Here, this is done by normalising the indicators using the idealised prevalence of the indicators in each system with this y-translation taking the form

$$\begin{cases} \ln Y_i^T = \ln Y_i - \ln Y_0^* = \ln Y_0^* + \beta_Y \ln N_i + \xi_{Y_i} - \ln Y_0^* = \beta_Y \ln N_i + \xi_{Y_i} \\ \ln A_{ni}^T = \ln A_{ni} - \ln A_{n0}^* = \ln A_{n0}^* + \beta_{A_n} \ln N_i + \xi_{A_{ni}} - \ln A_{n0}^* = \beta_{A_n} \ln N_i + \xi_{A_{ni}} \end{cases} \quad (7)$$

where  $Y_i^T$  and  $A_{ni}^T$  are the normalised economic output and urbanised area for city  $i$  respectively,  $Y_0^*$  and  $A_{n0}^*$  the idealised fixed-gradient system-wide prevalence of output and urbanised area respectively, and  $\xi_{Y_i}$  and  $\xi_{A_{ni}}$  the fluctuation terms from the theoretical scaling for city  $i$ . Through this translation, the theoretical model of economic output and urbanised area for each urban system now passes through the origin, while leaving the scaling regime and exponents unchanged. As a result, the relative optimal baseline human production,  $G^*$ , for different urban networks is now similar and equal to unity. The normalisation both enables a comparison of size-cost performance and a multi-system examination of the population scaling by investigating power-law fits to the combined data sample of the different urban networks.

## 2.3 | Urban boundary definition

In order to study the urban performance balance and infrastructural needs in Germany (DE), the Netherlands (NL), and England and Wales (EW), we first need to obtain estimates for population, output, and urbanised area indicators.<sup>6</sup> To estimate population at different scales we use the GEOSTAT population grid (Eurostat, 2016), which provides population counts for the year 2011 over square grids of  $1\text{ km} \times 1\text{ km}$  area, as building blocks. CORINE land cover data are also used to estimate urbanised area for the same time interval (Copernicus Land Monitoring Service, 2016). Regional GVA data for the year 2011, available through Eurostat (Eurostat, 29/02/16), are also used for the economic output indicator. The GVA data are, however, only available aggregated for the NUTS3 administrative boundaries. We use OECD's simplified GIS-based method (OECD, 2012) to breakdown the GVA values at NUTS3 level to the GEOSTAT population grid based on an area and population weighted approach according to

$$Y_{cell} = \sum_i \frac{Y_{NUTS3} \frac{N_{cell}}{A_{cell}} A_i}{N_{NUTS3}} \quad (8)$$

where  $Y_{cell}$  denotes the total GVA share assigned to a grid cell,  $N_{cell}$  and  $A_{cell}$  the total population and area of the cell (often approximately  $1\text{ km}^2$  unless belonging to a coastal or border grid cell) respectively,  $A_i$  the area of the  $i^{th}$  segment intersected by a given NUTS3 unit with GVA and population of  $Y_{NUTS3}$  and  $N_{NUTS3}$  respectively. The grid-level GVA values are then summed back up to estimate aggregate values for the other boundaries using a reversal of Equation 8. We should acknowledge that estimating population and GVA through these area-based proportionalities is simplistic and assumes a uniform population density distribution. This could potentially result in erroneous estimates when aggregating back up to urban units that are not significantly larger than the initial grid cells (Smith, 2014). However, in the absence of datasets of better quality and/or resolution, the approach remains one of very few available options.

**TABLE 1** Summary of the urban boundary definitions.<sup>8</sup>

Boundary		No. of units			$N_{min}$			No. of units ( $N > N_{min}$ )		
		DE	NL	EW	DE	NL	EW	DE	NL	EW
C100*		10358	634	2867	9769	4455	3895	700	235	587
C350		10072	961	2928	7847	7119	7627	965	246	481
C500	Density-based	8325	957	2475	8405	6801	59698	879	255	104
C750		6117	884	2021	9317	6192	57698	768	272	112
C1000		4729	779	1692	8209	5582	55031	827	296	120
C1400		3370	649	1435	8801	4334	67495	717	339	97
NUTS3 <sup>1</sup>	Administrative	402	40	125	34119	49364	69909	402	40	125
URBAUD <sup>2</sup>	Functional areas	94	34	83	57161	59589	77170	94	34	83
OECD <sup>3</sup>		24	5	13	527268	692953	536892	24	5	13

Values of  $N_{min}$  indicated for NUTS3, URBAUD, and OECD boundaries represent the population of the smallest unit rather than a cut-off used by the authors, see online supplementary material

\* Numbers indicate minimum density value used as the cut-off when applying the CCA to the population grid

<sup>1</sup> Nomenclature of Units for Territorial Statistics Level 3 – note that for units in England and Wales, constituting members of the Greater London Authority have been merged and used as one single area

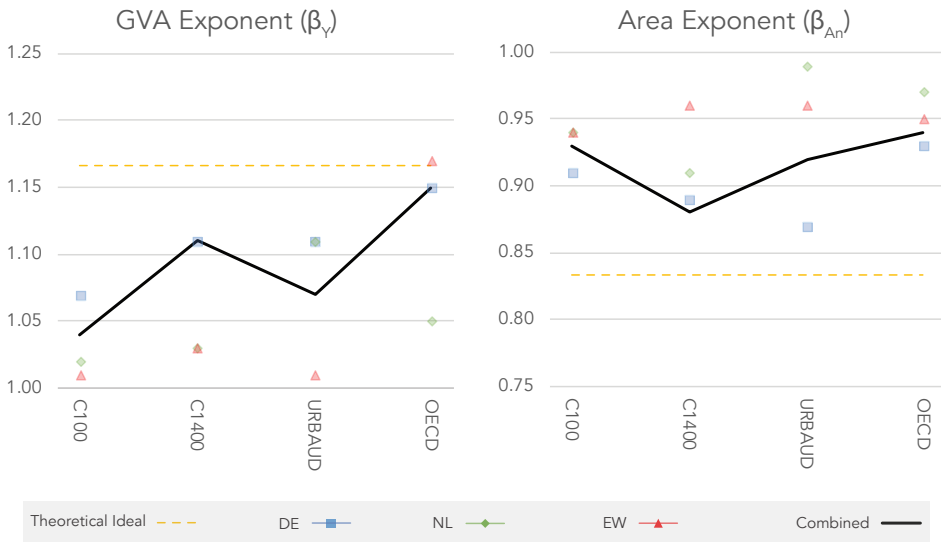
<sup>2</sup> Urban Audit Functional Urban Areas (FUA) 2011-2014

<sup>3</sup> OECD Functional Urban Areas

See supplementary material for a discussion of potential implications of variations in the GVA estimates.

We adopt a mix of density-based, administrative, and functional boundary definitions, Table 1. The density-based boundaries have been assembled using the City Clustering Algorithm (CCA) as per (Rozenfeld et al., 2011) by merging neighbouring GEOSTAT cells with population densities above a set cut-off, e.g.  $100 \frac{prs}{km^2}$  for C100. The two boundaries representing the functional urban areas, i.e. Urban Audit and OECD's functional urban areas, both delineate urban areas based on considerations of the percentage of population living and working within the same area using commuter data (OECD, 2012; Eurostat, 2017) with the difference in the cut-off values used for population ratios and the minimum population of units. The functional urban boundaries are subject to a minimum population cut-off by definition limiting the units considered to those which are the most populated and hence urban. The raw density-based units created through the CCA, however, could potentially include a large number of sparsely populated units. Instead of applying an arbitrary minimum population cut-off for these density-based boundaries, we employ the method described in Clauset et al. (2009)<sup>7</sup> to estimate a lower bound for population in each density-based boundary,  $N_{min}$  values indicated in Table 1. These lower-bound values correspond to the values above which a coherent power law distribution, à la those empirically observed by Auerbach and attributed to Zipf (Auerbach, 1913; Gabaix, 1999), can be assumed to apply to the population distribution across the urban system.



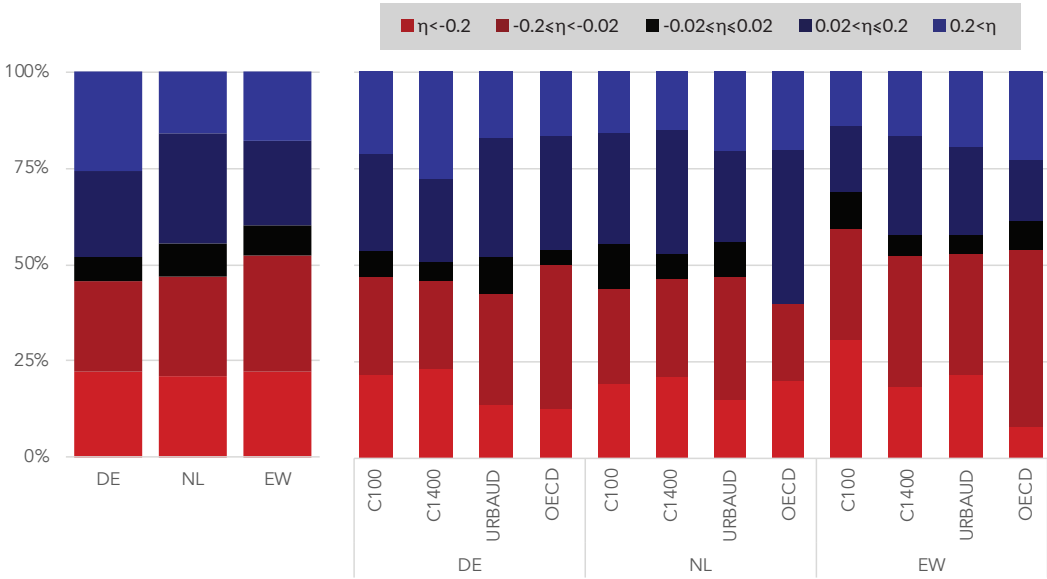


**FIGURE 2** Plots showing the OLS estimated scaling exponents for each boundary, dashed line indicates theoretically ideal values for  $D = 2$  and  $H = 1$ . Tabulated OLS estimates and confidence intervals for all boundaries are available in the online supplementary material.

### 3 | URBAN PERFORMANCE IN GERMANY, THE NETHERLANDS, AND ENGLAND AND WALES

We begin by examining the existence of power-law scaling and the empirical proximity of each country's urban network with Bettencourt's theoretical ideal. Figure 2 shows the OLS estimates for the GVA and urbanised area scaling exponents for each boundary and country.<sup>9</sup> As can be seen, the scaling of urbanised area and economic output do overall display a coherent sub- and super-linear relation with population respectively, regardless of the choice of country and/or urban network boundary definition. The extent of sub- and/or super-linearity of the relations, i.e. the strength of agglomeration effects in economic output and urbanised area, however, does vary across countries and boundary definitions. In this context, Germany shows on average the largest system-wide agglomeration elasticities for economic output followed by the Netherlands and then England and Wales. From the perspective of Bettencourt's model, the deviations from the ideal exponents of  $\beta_Y = \frac{7}{6}$  and  $\beta_{A_n} = \frac{5}{6}$  towards the unity indicate, on average, a system-wide lack of mobility,  $H < 1$ , across all three countries with cities in England and Wales most affected. Nevertheless, the estimated scaling exponents, especially those of economic output closely trail the theoretical ideal for the URBAUD and OECD functional urban areas which are the most directly compatible boundaries to those assumed within the model's assumptions one and two (Bettencourt, 2013; Bettencourt and Lobo, 2016). Additionally, the complementarity of the output and urbanized area exponents for each boundary, i.e.  $\beta_Y + \beta_{A_n} \approx 2$  implying  $\frac{dG}{dN} \approx 0$  (with R-squared of  $G$  against  $N$  averaging around 0.03 across different boundaries and countries), suggests that the model's third assumption also holds, see online supplementary material.

Similarly, from a comparative size-cost performance point of view, more than half of city units in England and Wales, regardless of the boundary, exhibit a need for better mobility to achieve their full economic potential, see Figure 3. The figure shows the percentage of units within a given comparative performance band,  $\eta(\equiv \ln \frac{G}{G^*})$ , where



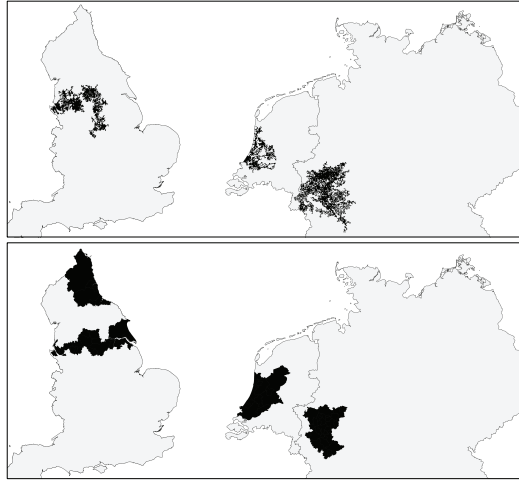
**FIGURE 3** Bar charts displaying the percentage of city units in each country (left) and for each boundary definition (right) in the indicated range of  $\eta$ . Bar charts for the remaining boundaries can be found in the online supplementary material.

increasingly negative values indicate an increasing need for better intra-unit mobility and transport and larger positive values an increasing need for built-area densification. It can be gleaned from the bar charts that the size-cost performance appears more symmetrically distributed around the idealised optimum,  $-0.02 \leq \eta \leq 0.02$ , when considering the aggregated distribution of performance balance for Germany and the Netherlands compared with those of England and Wales.<sup>10</sup> When considering the boundary disaggregated estimates, the English and Welsh urban systems consistently exhibit a larger portion of units requiring better internal mobility and as such intra-urban transport solutions regardless of spatial scales.

A combined interpretation of the comparative size-cost performance distribution and the overall scaling exponents estimated for each country suggests that all three countries are lacking in terms of urban mobility, albeit not to the same degree and not at the same spatial scales. Meanwhile, England and Wales is further burdened with an additional prevalence of inadequate intra-urban access and mixing that appears unique in its spatial persistence despite EW's similar exponent estimates to those of NL. For the sake of completeness, it is worth clarifying that this comparison is one of the comparative agglomerative productivities gauging the increased benefits associated with increased size. The comparison hence deliberately ignores the overall size of each nation's economy and their productivity as would be captured through the output prevalence  $\gamma_0$  and the cumulative number and population of cities in each country.

#### 4 | RHINE-RUHR, THE RANDSTAD, AND THE NORTHERN POWERHOUSE

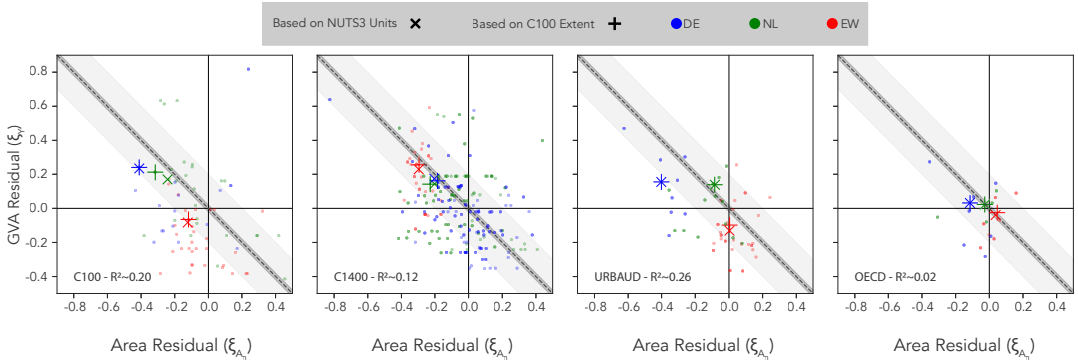
The current infrastructure plans in England and Wales, as previously mentioned in the background, focus heavily on the implementation of an inter-city passenger rail solution. Combined with improving journey times and frequency,



**FIGURE 4** Maps showing the areal extents used for allocating units to the city-regions – contiguous C100 units (top) and NUTS3 units (bottom).

these measures have explicitly been borrowed from the Dutch the Randstad and German Rhine-Ruhr to connect and transform a handful of the country's northern cities into a virtual city of a larger effective size (Infrastructure and Projects Authority, 2015; Transport for the North, 2016). The results presented in the last section, in principle regardless of the choice of city boundary definition and scale, support an infrastructure strategy concentrated on improving internal transport and mobility connections both simply based on EW's isolated scaling and as a comparison relative to the performance of the German and Dutch urban networks. This national comparison, however, would not necessarily justify the appropriation of an explicitly inter-city mobility solution from Rhine-Ruhr and the Randstad for implementation in the Northern Powerhouse. It is also crucial to note here that this examination of  $\eta$  masks individual economic productivity and infrastructure efficiency performance. Since  $\eta$  only considers the overall balance of  $Y - W$ , it is possible for cities to compensate for deviations from ideal scaling in one indicator, say  $Y$ , through similar deviations in the other, i.e.  $A_n$ . In such a way, considering Equation 7, a city unit with lower than ideally expected economic output,  $\xi_{Y_i} < 0$  for  $\beta_Y = \frac{7}{6}$ , can compensate by incorporating a larger effective urbanised area,  $\xi_{A_{n_i}} > 0$  for  $\beta_{A_n} = \frac{5}{6}$ , in order to keep the overall  $G$  close to optimality. This leads to cities where despite a balanced size-cost performance economic under-performance may still be prevalent when compared with others.

Consequently, we shift our focus to only those units within these three regions looking not only at their individual size-cost performance but also their deviation from the idealised expectations of economic output and urbanised area. We also examine the overall city-regions these units belong to by considering the hypothetical cities of their combined size summing their population, economic output, and urbanised area. We use two different approaches in defining the extent of the three regions and thus their constituting city units. One, adopted from Swinney (2016), corresponds to an aggregation of NUTS3 administrative units and is also representative of the *planned* Northern Powerhouse in EW. The other is based on the extent demarcated by the largest contiguous C100 units in each region, Figure 4. It is interesting to note that there is good agreement in the geography of the Randstad and Rhine-Ruhr defined either administratively or through urban proximity, i.e. single largest contiguous unit at a  $100 \frac{prs}{km^2}$  threshold. This, however, is not the case for the two realisations of the Northern Powerhouse.



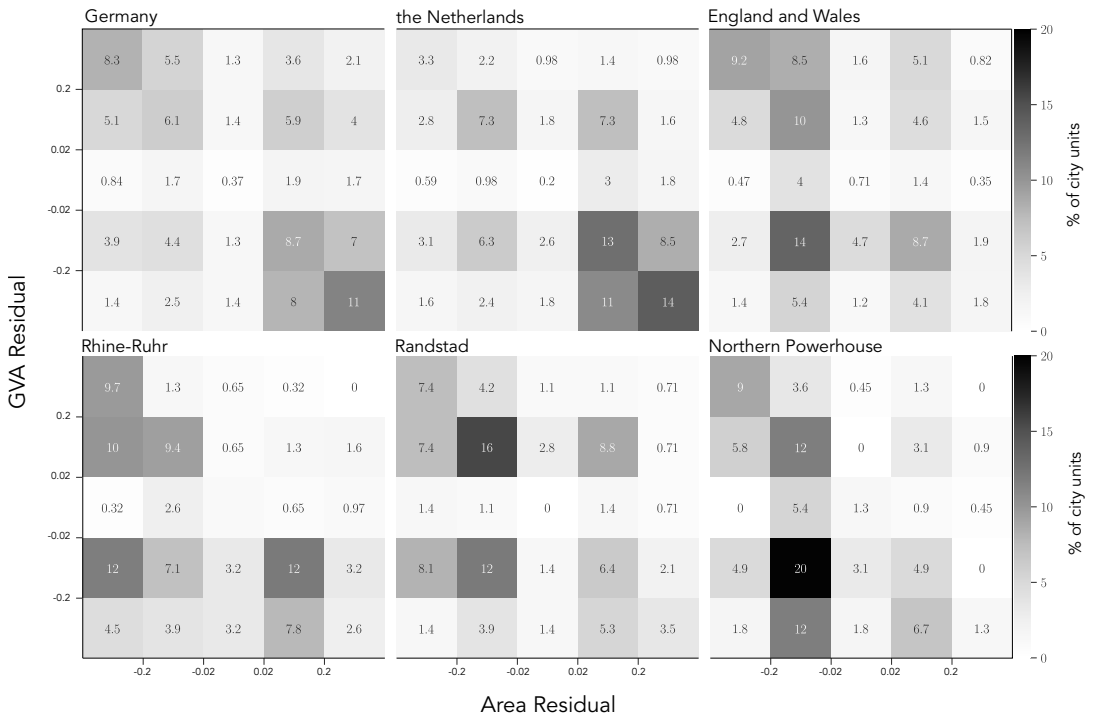
**FIGURE 5** Scatter plot of output residual against urbanised area residual for the Randstad, Rhine-Ruhr, and Northern Powerhouse assembled from units at different boundary definitions.  $R^2$  values are calculated for the smaller markers which are indicative of the spread of the units building up the three metro regions. See online for the colored version.

### 4.1 | A regional comparison

Proceeding with our results, Figure 5 compares the size-cost performance of each region aggregated from units at each boundary definition and its overall deviation from the idealised economic output and urbanised area scaling. The dashed diagonal represents an optimal size-cost performance,  $\eta = 0$ , with the shaded areas corresponding to  $-0.02 < \eta < 0.02$  and  $-0.2 < \eta < 0.2$  similar to those in Figure 3. Comparing only the size-cost performance of the regions, not much difference could be discerned between the Randstad, Rhine-Ruhr, and the Northern Powerhouse. The majority of their different realisations indicate a need for better internal mobility and mixing regardless of the choice of boundary definition or their overall extent. This is in spite of the existing inter-city passenger rail infrastructure in the Randstad and Rhine-Ruhr. Out of the three, however, the Randstad shows a larger qualitative variation in estimates depending on the choice of boundary definition with the realisation comprised of URBAUD units indicating a need for densification. A similar need can only be seen for a Northern Powerhouse comprised from the OECD units within the C100 regional extent. In contrast, no rendition of Rhine-Ruhr exhibits  $\eta \geq 0$ . Meanwhile, the comparison would suggest that size-cost performance is already relatively optimal for both the Randstad and the planned Northern Powerhouse when aggregating OECD units despite glaring differences in the mix of cities involved in the two variations of the Northern Powerhouse. The consideration of the scaling deviations, on the other hand, highlights a pattern whereby the economic over-performance is more-or-less correlated with denser built-areas.<sup>11</sup> From this perspective, despite seemingly larger imbalances of size-cost performance and a more pronounced need for better internal mobility the German and Dutch city-regions outperform the Northern Powerhouse economically suggesting that policy measures to be borrowed from the two are perhaps not simply those concerning inter-city mobility.

### 4.2 | A sub-regional portrait of national differences

To complement the comparison of the three city-regions and their home countries, we calculate the percentage of cities within different ranges of  $\xi_Y$  and  $\xi_{A_n}$  building nation-wide and region-wide city distributions.<sup>12</sup> Figure 6 shows discrete heat-maps with residuals for urbanised area on the x-axis and that of economic output on the y-axis. Note that the diagonal remains indicative of near-optimal size-cost performance. The most noticeable difference between



**FIGURE 6** Heat-maps showing percentage of city units across all boundaries for each residual cell.

the nation-wide distribution of city units in DE, NL, and EW is the relative symmetry of the distribution about the diagonal in DE and NL mirroring their distributions in Figure 3 with distribution peaks along the diagonal. Additionally, it is clear that these peaks in DE and NL are either units that are sparse and economically under-performing (bottom-right quadrant) or those that are dense and economically over-performing (top-left quadrant). This is in contrast with the EW national distribution where more than half of all units are within the lower triangle below the diagonal with the distribution peak pointing to cities that are economically under-performing despite their perceived density (bottom-left quadrant) with a size-cost balance in significant need of better internal mobility. Of more interest is the difference between national and regional distributions. While comparing the composition of the Randstad and Rhine-Ruhr with the overall German and Dutch distributions highlights a shift of the distribution peaks from sparse economically under-performing city units to denser and over-performing ones, especially in the Randstad, whereas a comparison of the Northern Powerhouse against the EW's composition reveals a slight increase in the portion of units that are both dense and under-performing.

## 5 | DISCUSSION

We can round-up the findings of the analysis and our national and regional comparisons as:

- continental case studies, while very instructive, are not in themselves crucial in making a case for better transport infrastructure in England and Wales,

- better mobility is not the sole factor in the different agglomeration elasticities between DE, NL, and EW, and
- unlike the Randstad and Rhine-Ruhr, the Northern Powerhouse's performance is representative of the wider urban system framing the under-performance in EW as a national problem and not a purely local or regional problem.

Similar to the results, we begin our brief discussion with the national comparison.

**Continental case studies, while very instructive, are not in themselves crucial in making a case for better transport infrastructure in England and Wales.** By using Bettencourt's systematic analytical framework which also enables comparisons of different urban systems, the Dutch and German case studies can be seen as instructive for understanding and interpreting the UK evidence. Model interpretations of the comparison of the scaling regimes governing the economic output and urbanised area in the urban networks of the three countries point to system-wide lack of adequate internal mobility and accessibility as fundamental to the lower productivity elasticities of the English and Welsh urban system compared with that of Germany. However, while the findings from the comparison between the three countries' urban networks are consistent with expectations, the Netherlands and Germany as national comparisons are found not to be crucial in arguing for better transport in England and Wales. The analysis of the UK data, in the light of the continental cases, is by itself shown to be sufficient to substantiate the case for mobility. In this manner, simply assessing EW's urban network in isolation with respect to the model's ideal could have supported a case for the deployment of better transport and mobility infrastructure, albeit those mostly of an intra-city nature, for boosting national economy and by extension that of the northern cities from an agglomeration point of view.

**Better mobility is not the sole factor in the different agglomeration elasticities between DE, NL, and EW.** A comparison of the scaling exponents estimated at the URBAUD boundary definition shows both German and Dutch urban networks exhibiting increasing returns to scale for economic output in contrast to the near linear scaling regime in England and Wales. This is in spite of a similarly linear scaling of urbanised area observed for both the Dutch and English urban systems. It could consequently be argued that, in addition to the connectivity and mobility factors influencing the development and growth of the urbanised area and output productivity, a wider range of policy differences should be taken into account when explaining the disparity between the economic productivity of the three countries. In other words, although one might be able to extract transferable policy drivers from comparisons with better performing urban networks such as those of Germany and the Netherlands, a singularly inter-city transport driven argument would not be the root solution/driver at which to arrive. A regional examination of the Rhine-Ruhr, the Randstad, and Northern Powerhouse further reinforces this.

**Unlike the Randstad and Rhine-Ruhr, the Northern Powerhouse performance is representative of the wider urban system.** We have shown that on average the Randstad and Rhine-Ruhr are comprised of individual units that themselves out-perform individual units building up either realisations of their English counterparts economically. The consideration of the aggregated regions with respect to the scaling residuals appears to suggest this to show an association with the higher densities of the continental examples demonstrated by the comparison of the three regions at different boundary definitions, Figure 5, where the aggregated Northern Powerhouse shows considerably lower densities and by extension productivities. It is therefore notable that the only comparable economic over-performance of a Northern Powerhouse unit occurs at C1400 boundary definition, which is also its only realisation of a comparably dense nature. The same density-productivity trend is also seen for the comprising units of the Randstad and Rhine-Ruhr with a majority of units denser and over-performing in contrast to their national distributions. Meanwhile, the composition of the Northern Powerhouse is very much representative of the England and Wales in general. This re-frames the under-performance of the northern English units not as a regional problem but one at a national level. Nevertheless, the aggregate regional comparison, in contrast to the current transport-led infrastructural program, would suggest a need for further densification in Northern Powerhouse using the same agglomeration-based princi-

ples. On a related note, we have previously pointed to the difference that exists between the geographic coverage of the *planned* Northern Powerhouse and its contiguously populated boundary, Figure 4. Although, insights from Figure 5 suggest that this territorial difference does not influence size-cost optimality significantly, such geographic proximity issues could become influential when considering the practicality of implementing multi-scale mobility improvements and/or densification measures.

Finally, an additional source of nuance, however, is the implication of singularly deploying either inter-city mobility infrastructure or densification policies on the size-cost balance of the aggregated region, especially when factoring in the spatial scales over which the infrastructure is to be incorporated. Whereas the economic residuals appear to grow with multi-scale densification, i.e. shrinking area residual, whether or not the overall cost-size performance remains near-optimal requires a balance between the two strategies to be reached. In this vein, Rhine-Ruhr can achieve higher potentials and size-cost balance through further improvements of mobility. The same is true for the Northern Powerhouse and the Randstad across a majority of spatial scales. Under the agglomeration economies paradigm, therefore, improvements and extensions of the inter- and intra-city transport infrastructure become crucial not as the principle solution but as the complementary measures needed to maintain appropriate levels of mobility and hence size-cost balance as any of the regions densify as a whole, across all or a given boundary definition, towards the top left quadrant in Figure 5.

## 6 | CONCLUSIONS

The primary contribution of this paper rests with its use of urban scaling models to examine the applicability and transferability of inter-city improvements to mobility in boosting economic productivity and output in the north of England. Our results show, while inter-city mobility and transport arguments can be used when considering overall national performance of urban networks, inter-city transport solutions supported by stylised agglomeration-based arguments are not easily transferable from successful examples of poly-centric metropolitan regions in boosting under-performance of similarly-sized regions elsewhere. Indeed, when considering size-cost balance, an examination of the needs for better mobility and/or densification can be made without requiring external comparisons. This, at a first glance, may appear to paint such regional comparisons trivial. However, regional comparative approaches are essential in identifying certain nuances which cannot be identified by looking at single case data. Indeed, this is the strength of the Bettencourt's framework as it allows a parsimonious but sophisticated and coherent methodological framework to be applied in very different contexts. As such, while the Bettencourt's framework demonstrates that the Dutch and German comparisons are not in themselves fundamental to the EW specific arguments, this cannot have been known prior to the application of Bettencourt's framework. This additionally portrays the EW case simply as a specific example of a more general class of problems. The continental comparisons, on the other hand, suggest that if mobility improvements do not drive and/or are not implemented in tandem with urban densification then these improvements are not likely to deliver the intended productivity gains on their own. This points towards a deeper interplay of productivity, population and infrastructural density. The paper then broadly argues in favour of mostly intra-city transport and mobility infrastructure coupled with and supporting increased urban density in enhancing economic performance and productivity.

## acknowledgements

Maps of EW contain OS data © Crown copyright and database rights 2018.

Maps of Germany and the Netherlands © EuroGeographics for the administrative boundaries.

Usual disclaimers apply.

## endnotes

- <sup>1</sup> Full derivation and further discussion regarding the model can be found in (Bettencourt, 2013) and in (?). A brief summary derivation of Bettencourt's model, however, is provided as online supplementary material to this publication.
- <sup>2</sup> Although the first two assumptions may appear contentious, it should be noted that the first is supported by current empirical observations and generally agreed upon across other urban scaling models (Yakubo et al., 2014; Sim et al., 2015; Gomez-Lievano et al., 2016) while the second is ultimately an idealised and stylised assumption that affects the value of the scaling exponent and not the existence of an overall population power-law relation.
- <sup>3</sup> Note that the formulations in Equation 4 represent the average expected values describing the urban behaviour across an entire urban network. For the formulation to be exact the inclusion of a fluctuation term is required (Bettencourt and Lobo, 2016). Most empirical studies do, however, observe the statistics of such fluctuations to be Gaussian and zero-centred for the log-transformed Equation 2 for a range of urban indicators (Bettencourt et al., 2007; ?).
- <sup>4</sup> Beware that the schematic curve included is meant to capture the general form and curvature of the  $Y - W$  function and exact gradients of the function before and after  $G^*$  depend on the values of  $D$  and  $H$  among other internal model parameters. See supplementary material for expanded expression of  $Y - W$  in terms of  $G$ .
- <sup>5</sup> Empirical demonstrations of this for the American urban network can be found in (Bettencourt, 2013).
- <sup>6</sup> CSV files including population, output, and urbanised area estimations for each boundary is provided in the online supplementary information along with Jupyter Notebooks containing some further insights and comments.
- <sup>7</sup> The python package used is available in (?) and complementary cumulative distribution functions highlighting the population cut-offs and the approximate power-law distributions for the density-based boundaries can be found in the Jupyter Notebooks.
- <sup>8</sup> The noticeable differences in the magnitude of the population cut-offs estimated for the three countries when considering a number of the density-based boundary definitions are reflective of the population domains over which a single power-law rank-size distribution is coherent. DE and NL systems appear to follow such distributions over a larger portion of their smaller-sized units in contrast with the EW system where a clear shift in the distribution exponent takes place over larger population sizes, see online supplementary material for distribution figures.
- <sup>9</sup> Use of simple OLS estimators is justified following the prior assumption and empirical observations that the scaling deviation term,  $\xi$ , follows a normal distribution centred on zero.
- <sup>10</sup> We use an arbitrary range rather than the absolute  $\eta = 0$  when interpreting optimality allowing for minor variations about the empirically designated  $G^*$ .
- <sup>11</sup> It should be noted that the variation in the  $R^2$  reported across panels in Figure 5 is an artefact of the *Modifiable Areal Unit Problem* (?).
- <sup>12</sup> Note that due to the overall similarity of city units and scaling regimes for the density-based boundaries, from this point forward, nation- or region-wide aggregation of all units refers to all units within C100, C500, C1000, C1400, NUTS3, URBAUD, and OECD excluding the remaining density-based boundaries. Although this was done to minimise the double counting of city units the boundary of which does not change greatly from boundary to boundary while maintaining representation of scale changes, the exclusion does not significantly affect city distributions and results presented in Figure 6.



## references

- Alstott, J., Bullmore, E. and Plenz, D. (2014) Powerlaw: A Python Package for Analysis of Heavy-Tailed Distributions. *PLOS ONE*, **9**, e85777.
- Auerbach, F. (1913) Das Gesetz der Bevölkerungskonzentration. *Petermanns Geographische Mitteilungen*, **59**, 74–76.
- Batty, M. (2012) Building a science of cities. *Cities*, **29**, Supplement 1, S9–S16.
- Bettencourt, L. (2013) The Origins of Scaling in Cities. *Science*, **340**, 1438–1441.
- Bettencourt, L. and Lobo, J. (2016) Urban scaling in Europe. *Journal of The Royal Society Interface*, **13**, 20160005.
- Bettencourt, L., Lobo, J., Helbing, D., Kühnert, C. and West, G. B. (2007) Growth, innovation, scaling, and the pace of life in cities. *Proceedings of the national academy of sciences*, **104**, 7301–7306.
- Bettencourt, L., Lobo, J. and Youn, H. (2013) The hypothesis of urban scaling: Formalization, implications and challenges. *arXiv:1301.5919 [nlin, physics:physics]*. URL: <http://arxiv.org/abs/1301.5919>.
- Bettencourt, L. and West, G. (2010) A unified theory of urban living. *Nature*, **467**, 912–913.
- Burger, M. J., Meijers, E. J., Hoogerbrugge, M. M. and Tresserra, J. M. (2015) Borrowed Size, Agglomeration Shadows and Cultural Amenities in North-West Europe. *European Planning Studies*, **23**, 1090–1109.
- Centre for Cities (2015) Northern Powerhouse factsheet: Key figures on the city regions in the Northern Powerhouse. URL: <http://www.centreforcities.org/publication/northern-powerhouse-factsheet/>.
- Clauset, A., Shalizi, C. R. and Newman, M. E. J. (2009) Power-Law Distributions in Empirical Data. *SIAM Review*, **51**, 661–703.
- Copernicus Land Monitoring Service (2016) Corine Land Cover 2012. URL: <https://land.copernicus.eu/pan-european/corine-land-cover/clc-2012>.
- Dorling, D. (2010) Persistent North–South Divides. In *The Economic Geography of the UK* (eds. N. M. Coe and A. Jones), 12–28. London, UK: SAGE Publications Ltd.
- Eurostat (2016) GEOSTAT 2011 grid dataset. URL: <http://ec.europa.eu/eurostat/web/gisco/geodata/reference-data/population-distribution-demography/geostat>.
- (2017) Methodological Manual on City Statistics: 2017 Edition. URL: <http://ec.europa.eu/eurostat/documents/3859598/8012444/KS-GQ-17-006-EN-N.pdf/a3f1004f-cfae-4cc4-87da-81d588d67ae2.00000>.
- (29/02/16) Gross Value-Added at Basic Prices by NUTS 3 Regions. URL: [http://ec.europa.eu/eurostat/web/products-datasets/-/nama\\_10r\\_3gva](http://ec.europa.eu/eurostat/web/products-datasets/-/nama_10r_3gva).
- Gabaix, X. (1999) Zipf’s Law for Cities: An Explanation. *Quarterly Journal of Economics*, **114**, 739–767.
- Glaeser, E. L. (2010) Introduction to "Agglomeration Economics". In *Agglomeration Economics* (ed. E. L. Glaeser), National Bureau of Economic Research conference report, 1–14. Chicago: The University of Chicago Press.
- Glaeser, E. L. and Kohlhase, J. E. (2003) Cities, regions and the decline of transport costs. *Papers in Regional Science*, **83**, 197–228.
- Gomez-Lievano, A., Patterson-Lomba, O. and Hausmann, R. (2016) Explaining the prevalence, scaling and variance of urban phenomena. *Nature Human Behaviour*, **1**, 0012.
- Gomez-Lievano, A., Youn, H. and Bettencourt, L. (2012) The Statistics of Urban Scaling and Their Connection to Zipf’s Law. *PLOS ONE*, **7**, e40393.

- Infrastructure and Projects Authority (2015) National Infrastructure Pipeline factsheet. *Tech. rep.*, HM Treasury, London, United Kingdom. URL: <https://www.gov.uk/government/publications/national-infrastructure-pipeline-july-2015/national-infrastructure-pipeline-factsheet-july-2015>.
- Jones, C. (2016) Spatial economy and the geography of functional economic areas. *Environment and Planning B: Planning and Design*.
- McCann, P. (2016) *The UK Regional-National Economic Problem: Geography, Globalisation and Governance*. Regions and Cities. Oxon, UK: Routledge.
- National Infrastructure Commission (2016) High Speed North: A National Infrastructure Commission Report. *Tech. rep.*, National Infrastructure Commission. URL: <https://www.gov.uk/government/publications/high-speed-north-a-national-infrastructure-commission-report>.
- OECD (ed.) (2012) *Redefining "Urban": A New Way to Measure Metropolitan Areas*. Paris: OECD.
- Openshaw, S. (1983) *The Modifiable Areal Unit Problem*. Geo Books. 02807 OCLC: 12052482.
- Osborne, G. (2014) We Need a Northern Powerhouse. URL: <https://www.gov.uk/government/speeches/chancellor-we-need-a-northern-powerhouse>. 00000.
- Rozenfeld, H. D., Rybski, D., Gabaix, X. and Makse, H. A. (2011) The Area and Population of Cities: New Insights from a Different Perspective on Cities. *American Economic Review*, **101**, 2205–2225.
- Samaniego, H. and Moses, M. E. (2008) Cities as Organisms: Allometric Scaling of Urban Road Networks. *Journal of Transport and Land Use*, **1**.
- Sim, A., Yaliraki, S. N., Barahona, M. and Stumpf, M. P. H. (2015) Great cities look small. *Journal of The Royal Society Interface*, **12**, 20150315.
- Smith, D. A. (2014) Domestic energy use in England and Wales: A 3D density grid approach. *Regional Studies, Regional Science*, **1**, 347–349.
- Swinney, P. (2016) Building the Northern Powerhouse: Lessons from the Rhine-Ruhr and Randstad. *Tech. rep.*, Centre for Cities, London, UK. URL: <http://www.centreforcities.org/wp-content/uploads/2016/06/16-05-31-Building-the-Northern-Powerhouse-Lessons-from-the-Rhine-Ruhr-and-Randstad.pdf>.
- Szüle, J., Kondor, D., Dobos, L., Csabai, I. and Vattay, G. (2014) Lost in the City: Revisiting Milgram's Experiment in the Age of Social Networks. *PLOS ONE*, **9**, e111973.
- Transport for the North (2015) The Northern Powerhouse: One Agenda, One Economy, One North - A report on the Northern Transport Strategy. *Tech. rep.*, Department for Transport, HM Government, London, United Kingdom. URL: [https://www.gov.uk/government/uploads/system/uploads/attachment\\_data/file/427339/the-northern-powerhouse-tagged.pdf](https://www.gov.uk/government/uploads/system/uploads/attachment_data/file/427339/the-northern-powerhouse-tagged.pdf).
- (2016) The Northern Transport Strategy: Spring 2016 Report. *Tech. rep.*, Department for Transport, HM Government, London, United Kingdom. URL: <https://www.gov.uk/government/publications/northern-transport-strategy-spring-2016>.
- Yakubo, K., Saijo, Y. and Korošak, D. (2014) Superlinear and sublinear urban scaling in geographical networks modeling cities. *Physical Review E*, **90**.