

Widespread Proteome Remodeling and Aggregation in Aging *C. elegans*

Dirk M. Walther, Prasad Kasturi, Min Zheng, Stefan Pinkert, Giulia Vecchi, Prajwal Ciryam, Richard I. Morimoto, Christopher M. Dobson, Michele Vendruscolo, Matthias Mann, and F. Ulrich Hartl*

*Correspondence: uhartl@biochem.mpg.de
<http://dx.doi.org/10.1016/j.cell.2016.12.041>

(Cell 167, 919–932; May 7, 2015)

In Table S3B of the above article, protein identifiers were inadvertently matched with the wrong values. Table S3B reports a subset of data from Table S1, calculated as protein abundance values relative to day 1 of worm age. Note that, in Table S1, the values are displayed correctly. A corrected version of the Table S3B is available with this Correction online. The error does not affect the conclusions in the study, and we apologize for any inconvenience that it may have caused.

Epigenetic Memory Underlies Cell-Autonomous Heterogeneous Behavior of Hematopoietic Stem Cells

Vionnie W.C. Yu, Rushdia Z. Yusuf, Toshihiko Oki, Juwell Wu, Borja Saez, Xin Wang, Colleen Cook, Ninib Baryawno, Michael J. Ziller, Eunjung Lee, Hongcang Gu, Alexander Meissner, Charles P. Lin, Peter V. Kharchenko,* and David T. Scadden*

*Correspondence: peter.kharchenko@post.harvard.edu (P.V.K.), david_scadden@harvard.edu (D.T.S.)
<http://dx.doi.org/10.1016/j.cell.2017.02.010>

(Cell 167, 1310–1322; November 17, 2016)

During the preparation of Figure 3A of the above article, the 3D plot showing the clonal composition of the bone marrow of Mx1Cre: Hue Donor used to reconstitute different C57/Bl6 mice was mistakenly duplicated and inserted as the 3D graph of the total bone marrow of Recipient mouse 2. This error does not affect the results in the paper or the interpretation of the data. We have corrected the figure online, showing the correct graph of the total bone marrow of Recipient mouse 2 in panel A. The corrected panel also appears below. We apologize for any confusion this error may have caused.

Figure 3A. Hematopoiesis Is Composed of Dissimilar Clones with Cell-Autonomous Behavior (corrected)

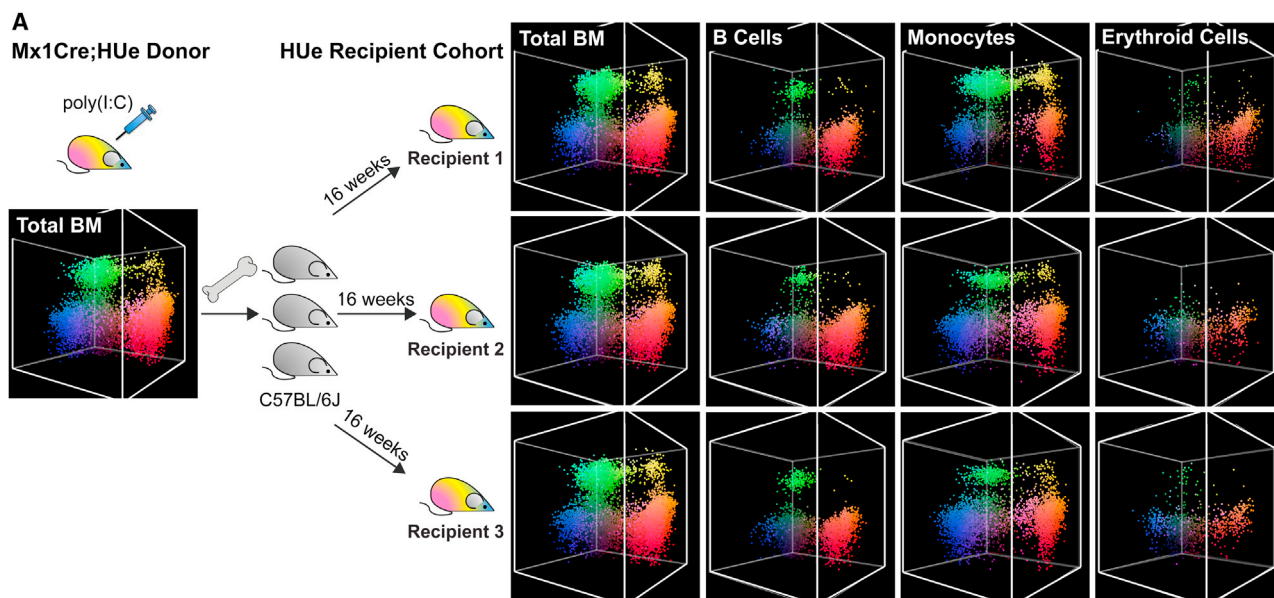


Figure 3A. Hematopoiesis Is Composed of Dissimilar Clones with Cell-Autonomous Behavior (original)

