


RESEARCH ARTICLE

Open Access



Nucleus- and plastid-targeted annexin 5 promotes reproductive development in Arabidopsis and is essential for pollen and embryo formation

Malgorzata Lichočka^{1*} , Wojciech Rymaszewski¹, Karolina Morgiewicz¹, Izabela Barymow-Filoniuk¹, Aleksander Chlebowski¹, Mirosław Sobczak², Marcus A. Samuel³, Elmon Schmelzer⁴, Magdalena Krzymowska¹ and Jacek Hennig¹

Abstract

Background: Pollen development is a strictly controlled post-meiotic process during which microspores differentiate into microgametophytes and profound structural and functional changes occur in organelles. Annexin 5 is a calcium- and lipid-binding protein that is highly expressed in pollen grains and regulates pollen development and physiology. To gain further insights into the role of ANN5 in Arabidopsis development, we performed detailed phenotypic characterization of Arabidopsis plants with modified ANN5 levels. In addition, interaction partners and subcellular localization of ANN5 were analyzed to investigate potential functions of ANN5 at cellular level.

Results: Here, we report that RNAi-mediated suppression of ANN5 results in formation of smaller pollen grains, enhanced pollen lethality, and delayed pollen tube growth. ANN5 RNAi knockdown plants also displayed aberrant development during the transition from the vegetative to generative phase and during embryogenesis, reflected by delayed bolting time and reduced embryo size, respectively. At the subcellular level, ANN5 was delivered to the nucleus, nucleolus, and cytoplasm, and was frequently localized in plastid nucleoids, suggesting a likely role in interorganellar communication. Furthermore, ANN5-YFP co-immunoprecipitated with RABE1b, a putative GTPase, and interaction *in planta* was confirmed in plastidial nucleoids using FLIM-FRET analysis.

Conclusions: Our findings let us to propose that ANN5 influences basal cell homeostasis via modulation of plastid activity during pollen maturation. We hypothesize that the role of ANN5 is to orchestrate the plastidial and nuclear genome activities via protein-protein interactions however not only in maturing pollen but also during the transition from the vegetative to the generative growth and seed development.

Keywords: Arabidopsis, Accession, Annexin, Pollen grain, Seed, Embryo, Plastid, Nucleoid, Chlorophyll, Rab GTPase

Background

In angiosperms, the male gametophyte (microgametophyte or pollen grain) plays an essential role in the reproductive success of the species, and normal pollen development under challenging environmental conditions is a highly desirable agronomic trait in various crops. Development of a male gametophyte is a complex process

that takes place in the anther locules, where microspore mother cells undergo meiosis to produce haploid microspores [1, 2]. Developing microspores take up nutrients from the tapetum, an inner layer of cells in the anther locule. This secretory tissue provides soluble carbohydrates for microspore growth and lipids for pollen cell wall formation [3, 4]. Despite being dependent upon nutrient delivery from the tapetum, microspore plastids undergo intensive structural reorganization as the microspore matures [2]. In young microspores, plastids are poorly differentiated and lack any internal membranous system.

* Correspondence: mlichocka@ibb.waw.pl

¹Institute of Biochemistry and Biophysics, Polish Academy of Sciences, Pawlowskiego 5a, 02-106 Warsaw, Poland

Full list of author information is available at the end of the article



Before the first mitosis, the plastids develop a few thylakoids and differentiate into amyloplasts and accumulate starch transiently until the bicellular stage of microgametogenesis. Following the second mitosis, the tricellular mature pollen grain is made up of one vegetative cell (VC) and two sperm cells. At this stage, the pollen plastids contain only negligible amounts of starch as the majority of the starch is hydrolyzed [5]. Although limited in number in developing microspores, these plastids are crucial for pollen viability as various mutants defective in plastid carbohydrate metabolism exhibit pollen sterility [6].

Genes important for male gametophyte development can be assigned as either 'early' or 'late', according to their spatiotemporal expression pattern. The 'early' genes are the first to be activated in the microspore, and their expression levels decrease as pollen maturation approaches. The 'late' genes are activated after the first microspore mitosis, and their transcripts accumulate during pollen maturation [7]. One of the late genes in the developing microspore is annexin 5 (*ANN5*). *ANN5* promoter activity was detected in the bicellular microspore, and maximum *ANN5* transcript abundance correlated with pollen maturation [7, 8]. Annexins belong to a ubiquitous family of proteins present in eukaryotic organisms [9, 10] localized to various subcellular compartments [11]. Due to their calcium- and membrane-binding capacity, annexins are known to be involved in a variety of cellular processes such as actin binding, maintenance of vesicular trafficking, cellular redox homeostasis, and ion transport [12]. *ANN5* was previously characterized biochemically and, like other annexins, associated with liposomes in a calcium-dependent manner and bound actin [13]. Pollen tubes overexpressing *ANN5* displayed enhanced resistance to Brefeldin A (BFA), an inhibitor of vesicular protein transport, which suggested that *ANN5* promoted membrane trafficking downstream of the block by BFA. Supporting this, RNAi-based down-regulation of *ANN5* resulted in enhanced pollen lethality [8]. However, the mechanisms through which *ANN5* affects microspore development remain unknown. Our results show that *ANN5* function is not limited to male gametophyte development but plays a central role during the entire reproductive development process in *Arabidopsis*. We further show that *ANN5* localizes to the nucleus and the plastids, implicating *ANN5* in crosstalk between cellular compartments essential for the maintenance of cellular homeostasis.

Methods

Plant material and growth conditions

The experiments were carried out on *Arabidopsis thaliana* and *Nicotiana benthamiana* plants. Modified *ANN5* expression was introduced in *Arabidopsis* Col-0 background. The other *Arabidopsis* accessions: An-1,

Bay-0, C24, Ler-1, Mr-0, Oy-0 and Wa-1 were obtained from NASC (<http://arabidopsis.info/>). *Arabidopsis* plants were grown in Jiffy7 pots in controlled-environment chambers (Percival Scientific, Iowa, USA) at 22 °C, 40% humidity, under 8 h of light for 4 weeks followed by 16 h of light conditions. *Arabidopsis* seedling cultures were maintained on the solidified Murashige and Skoog (MS) medium (Duchefa, Amsterdam, The Netherlands) containing 1.5% (w/v) sucrose and 1% (w/v) agar (Duchefa, Amsterdam, The Netherlands) in controlled-environment chambers at 22 °C under 8 h of light. *N. benthamiana* plants were grown in soil under controlled environmental conditions (21 °C, 16 h of light).

Construction of expression vectors and transformation of *Arabidopsis*

Coding sequence of *ANN5* was PCR amplified using primers adding BglII-BamHI restriction sites: forward 5'-AGATCTCGATGGCGACTCTTAAGGTTTCT-3' and reverse 5'-GGATCCTAGCATCATCTTCACCGA GAA-3' and cloned into modified pSAT4A plasmid bearing the full-length cDNA sequence of YFP. The expression cassette 35S:*ANN5*-YFP was subcloned into pPZP-RCS2 binary plasmid [14].

Agrikola binary plasmids (<http://www.agrikola.org/>) for targeted *ANN5* RNAi silencing were obtained from NASC (<http://arabidopsis.info/>) [15]. pAgrikola plasmids contain a fragment of a gene coding sequence, called gene specific tag (GST), under the control of 35S promoter that enables production of double-stranded hairpin RNA (hpRNA) necessary for targeted gene silencing [15]. GST in pAgrikola 35S:*ANN5*(GST)-RNAi corresponded to 214 bp long fragment of *ANN5* coding sequence starting at position 668 and ending at 881. Binary plasmids used in this study are listed in Additional file 1: Table S1.

Wild-type *Arabidopsis* Col-0 plants were transformed with the following constructs: pPZP-RCS2 35S:*ANN5*-YFP, pAgrikola 35S:*ANN5*(GST)-RNAi and pCAMBIA 1302 35S:*GFP* [16] using floral dipping method [17] and *Agrobacterium tumefaciens* strain GV3101 carrying the appropriate plasmid along with helper plasmid pMP90. For RNAi-based silencing of *ANN5* additional helper plasmid pSOUP (<http://www.agrikola.org/>) was introduced into *Agrobacterium*. *ANN5*-RNAi transformants were identified using Basta-based selection procedure (<http://www.agrikola.org/>), whereas selection of 35S:*ANN5*-YFP and 35S:*GFP* transformants was performed directly on MS plates under fluorescence stereomicroscope Nikon SMZ1500 (Nikon Instruments B.V. Europe, Amsterdam, The Netherlands).

RNA extraction and RT-qPCR

Total RNA was isolated from vegetative and generative *Arabidopsis* tissues using Syngen Plant RNA Mini Kit

(Syngen, Wrocław, Poland). Mature pollen grains were collected on ice-cold 0.3 M mannitol, according to the procedure described previously [18]. Isolated RNA was quantified with a NanoDrop ND-1000 spectrophotometer (Thermo Fisher Scientific, USA) and subjected to DNA digestion (Rapid out DNA removal kit, Thermo Fisher Scientific). First cDNA was synthesized using 2 µg RNA and Superscript III kit (Thermo Fisher Scientific, USA). qPCR was performed with the SYBR green master mix (Thermo Fisher Scientific, USA) using Light Cycler 480 (Roche, Basel, Switzerland). Reactions were run in triplicate with three different cDNA preparations. The relative expression level was normalized with the expression of the reference genes (*UBC21*, *PP2A* and *YLS8*) and quantified by ΔCt method. Primers for RT-qPCR are listed in Additional file 1: Table S2.

Arabidopsis phenotype characterization

For phenotypic studies we used seeds of two selected *ANN5*-RNAi lines: *ANN5*-RNAi_13, *ANN5*-RNAi_15, OE_2 line and wild-type Arabidopsis Col-0. Five seeds of each genotype were placed per Jiffy7 pot. After 2 days of stratification at 4 °C the pots were placed under appropriate light regime. The experiment was carried out in the growth chamber (Percival Scientific, Iowa, USA) under two different light regimes: 1) 12 h light/12 h dark photoperiod during the whole experiment and 2) under short day (8 h of light) for 4 weeks followed by long day (16 h of light) conditions (sd/ld). The light during the day period was provided with mixed fluorescent tubes and incandescent bulbs. Total photon flux density at the soil level was $120 \mu\text{E m}^{-2} \text{s}^{-1}$. After reaching two cotyledons stage only one seedling per pot was further cultured and the rest was removed. Each developmental stage was recorded for 7–10 individual plants per genotype. All plants were daily inspected from germination until siliques ripening. Bolting time was measured as the number of days from germination to the first elongation of the floral stem at 0.1 cm height. Flowering time was estimated as the number of days from germination to the first flower opening. After fading of the first flower the time of silique formation was recorded. Trays with growing plants were rotated three times per week for uniform plant development. Three complete independent experiments were carried out for both light regimes. Data were analyzed using Microsoft Excel and R free-ware software (<http://www.r-project.org>).

Pollen tubes growth in pistils

Closed flower buds and freshly opened flowers with short pedicel were cut off from the inflorescence and mounted on water agar plates, each genotype on a separate plate: Col-0 wild type, *ANN5*-RNAi_13, *ANN5*-RNAi_15 and *ANN5*-OE_2. From now on each step was performed

under the stereomicroscope Olympus SZ60 (Olympus, Tokyo, Japan). Petals, sepals and anthers were removed from the buds with tweezers whereas pistils were left mounted on the plate. Next, stamens with dehisced anthers were dissected from mature flowers and pollen grains were spread onto the stigma of the isolated pistils. The pollinated pistils were collected at 3, 6 and 24 h after pollination and fixed in Carnoy's fixative [60% (w/v) ethanol, 30% (w/v) chloroform, 10% (w/v) acetic acid]. Aniline blue staining of the pollen tubes was performed as described by Mori et al. [19]. Three independent experiments were conducted. Each time 5–7 pistils per genotype were hand pollinated. The images of the aniline blue stained samples were collected using a fluorescence microscope Nikon E800 (Nikon Instruments B.V. Europe, Amsterdam, The Netherlands). Pollen tubes length was measured from the top of the style to the front of the longest pollen tube using ImageJ software.

Seed size measurements

During Arabidopsis growth all the auxiliary buds were removed. Once the siliques formed on the main bolt, turned almost completely brown they were harvested into a microcentrifuge tubes. The siliques were let to air-dry in the open tubes for several days prior to measurements. The dry seeds were dispersed on microscope slides and several images were collected under the stereoscopic microscope Nikon SMZ1500. Following the conversion of images to black-white images using the threshold function of ImageJ software the area of the individual seed was calculated as described previously [20].

Protein extraction and immunoprecipitation

The samples collected from 12 days old Arabidopsis seedlings showing constitutive expression of *ANN5*-YFP or GFP were ground in liquid nitrogen. The samples were then thawed in 2 ml extraction buffer (50 mM Tris-HCl, pH 7.5; 50 mM NaCl; 6 mM EDTA; protease inhibitor PMSF; 0.5% [v/v] Triton X-100) per 1 g tissue powder. Samples were centrifuged at 13000 rpm and 4 °C for 20 min. Collected supernatants were adjusted to 3 mg ml⁻¹ of total proteins and incubated with GFP-TrapA-beads (Chromotek, USA) for 4 h at 4 °C. After incubation the supernatant was discarded and the beads were washed using 50 mM Tris-HCl (pH 7.5), 150 mM NaCl and 2 mM EDTA buffer. Proteins were eluted using 200 mM glycine (pH 2.5). The eluted proteins were trypsin digested and subjected to mass spectrometry.

Mass spectrometry analysis

Liquid chromatography-mass spectrometry analyses of the peptide mixtures were performed on the Orbitrap

spectrometer (Thermo Fisher Scientific, USA) and the Mascot program was used for database searches as described previously [21].

Chlorophyll extraction and measurement

Col-0 wild-type, *ANN5-OE_2* and *ANN5_OE1* seeds were surface-sterilized with 75% ethanol for 2 min and then with 10% sodium hypochlorite for 10 min. Next, the seeds were washed three times with sterile water and spread onto agar-solidified (1% *w/v*) MS media supplemented or not with 1.5% (*w/v*) sucrose. After 2 days stratification at 4 °C, the plates were placed in the growth chamber under a photon flux density of 220 $\mu\text{E m}^{-2} \text{s}^{-1}$ at the shelf level. Seedlings were grown under short-day conditions (8 h light) for 10 days. Aerial part of 10 day old seedlings were harvested, weighed and kept at -80 °C. Samples were mechanically ground in 2 ml microfuge tubes with two stainless-steel beads by a bead mill (TissueLyser II, Qiagen, Hilden, Germany). After extraction with 1 ml cold 80% acetone, the samples were centrifuged 6000 rpm for 5 min at 4 °C. Extraction was repeated two times with fresh solvent. Absorbance of the pooled extracts was measured at 664 and 647 nm with a spectrophotometer (UV-1202, Shimadzu, Kyoto, Japan). Chlorophyll content was calculated using equations described previously [22].

Plasmid constructions for transient expression in *N. benthamiana*

Coding sequence of *ANN5* was PCR amplified with primers adding Sali-EcoRV restriction sites: forward 5'-GTCGACATGGCAACAATGAA-3' and reverse 5'-GATATCCAACGTTGGGGCCTAAAAGAGAGAG-3' and cloned into pENTR1A vector compatible with the Gateway system. The resulting plasmid was LR recombined into GWB441, GWB 551 and GWB 552 binary plasmids [23]. Coding sequence of *RABE1b* was PCR amplified using primers adding Sali-XhoI restriction sites: forward 5'-GTCGACATGGCGAAGATGATGATGTTGC-3' and reverse 5'-CTCGAGGCTTGAAGAACAAGTTTCTTGC TCAG-3'. The amplified coding sequences were cloned into pENTR1A vector, then LR recombined into GWB 441 and GWB444 [23]. Binary plasmids constructed in this study are listed in Additional file 1: Table S1.

The resulting binary plasmids were transformed into *Agrobacterium* strain GV3101. Subsequently, *Agrobacterium* cultures carrying appropriate constructs were infiltrated into leaves of *N. benthamiana*, and after 72 h leaf samples were analyzed using laser scanning confocal microscopy.

Bioinformatics

Web-based bioinformatics tools were used for predicting protein subcellular localization: PSORT and WoLF PSORT (www.genscript.com), Nuc-Plos [24].

Confocal laser scanning microscopy

Subcellular localization of the fusion proteins was evaluated using a Nikon C1 confocal system built on TE2000E and equipped with a 60× Plan-Apochromat oil immersion objective (Nikon Instruments B.V. Europe, Amsterdam, The Netherlands). GFP/YFP fusion proteins were excited with a Sapphire 488 nm laser (Coherent, Santa Clara, CA, USA) and observed using the 515/530 nm emission filter. CFP fusion protein and DAPI fluorescence were excited with a 408 nm diode laser and detected using the 450/35 nm emission filter. Confocal images were deconvoluted and pseudocolored using ImageJ software.

FLIM-fret

For FLIM-FRET (Fluorescence Lifetime Imaging Microscopy-Förster Resonance Energy Transfer) *RABE1b* was fused to CFP (donor) and transiently expressed in *N. benthamiana* leaves in the presence or absence of the potential interacting partner *ANN5* fused to YFP (acceptor). Cells were imaged with an FV100 confocal system (Olympus, Tokyo, Japan) equipped with a 60× water immersion objective lens. For FLIM CFP fusion protein was excited with a 440 nm pulsed diode laser (Sepia II, PicoQuant, Berlin, Germany) and detected using a 482/35 bandpass filter. Images were acquired with a frame size of 256 × 256 pixels. Photons were collected with a SPAD detector and counted with the PicoHarp 300 TCSPC module (Picoquant). The obtained data were analyzed with Symphotime software (PicoQuant). Fluorescence lifetimes of CFP in plastid nucleoids were calculated by fitting a bi-exponential decay model.

Transmission and scanning electron microscopy

Shoot apex of the primary inflorescence with flower buds and flowers at anthesis were sampled from *Arabidopsis* Col-0 wild type, *ANN5-RNAi_13*, *ANN5-RNAi_15* and *ANN5-OE_2* genotypes. Seven samples per genotype were fixed in a mixture of 2% paraformaldehyde (*w/v*) and 2% glutaraldehyde (*v/v*) in 0.05 M sodium cacodylate buffer for 2 h at room temperature. Plant samples were collected from two individual experiments. After fixation samples from each genotype were grouped into three categories: flower bud stage 6 to 9, closed flower bud stage 10 to 12 and open flower stage 13 to 15 according to categories previously described by Smyth et al. [25]. Next, samples were post fixed in osmium tetroxide, dehydrated in ethanol and embedded in EPON resin according to [26]. Ultrathin sections were examined in an FEI 268 D 'Morgagni' (FEI Corp., Hillsboro, OR, USA) transmission electron microscope equipped with an SIS 'Morada' digital camera (Olympus SIS, Münster, Germany).

Mature pollen grains were collected directly into a cap of the microfuge tube. They were processed for scanning electron microscopy as described previously [27]. Imaging was performed with a Zeiss Spura 40VP (Zeiss, Jena, Germany) scanning electron microscope operating at 10 kV.

Results

ANN5 is expressed in a tissue-specific manner

Earlier studies demonstrated that *ANN5* was predominantly expressed in mature flowers [8, 28]. To further characterize *ANN5* expression, we analyzed vegetative and reproductive organs of *Arabidopsis* using RT-qPCR. *ANN5* transcripts were less abundant during vegetative growth than in reproductive tissues of *Arabidopsis* (Fig. 1a), and were nearly undetectable in 3-day-old seedlings, rosette leaves, and roots. After the transition to the generative phase, a slight increase in *ANN5* expression level was observed in the developing stem and strong expression was detected in young developing siliques. A separate analysis of the pistils and stamens revealed that the strongest *ANN5* expression was seen in the male organs, with the highest *ANN5* transcript abundance observed in mature pollen (Fig. 1b).

Arabidopsis accessions differ in *ANN5* expression

Elevated expression of *ANN5* correlated with pollen grain maturation in Col-0 plants (Fig. 1b), and we wished to determine whether this was consistent among *Arabidopsis* accessions. Eight *Arabidopsis* accessions, originally derived from different habitats, were selected and cultivated until flowering under short day and long day conditions: An-1, C24, Col-0, Ler-1, Bay-0, Wa-1, Oy-0, Mr-0. RT-qPCR analysis of RNA isolated from flower buds and mature flowers revealed differences in *ANN5* expression among the accessions (Fig. 1c). Wa-1, C24, and Mr-0 exhibited a Col-0-type expression pattern with higher *ANN5* mRNA levels in mature flowers than in buds. In Bay-0, Oy-0, and Ler-1, *ANN5* expression was already elevated in the flower buds and remained at similar levels during anthesis. An-1 exhibited the most unusual *ANN5* expression profile: very high expression was observed in flower buds but expression dropped precipitously in the mature flowers. Accession-specific patterns of *ANN5* expression might reflect possible differences in male gametophyte development among *Arabidopsis* accessions.

Suppression of *ANN5* leads to a delay in generative development in *Arabidopsis*

Previous research showed that RNAi (RNA interference)--based suppression of *ANN5* driven by the pollen-specific promoter *LAT52* led to enhanced pollen lethality [8], suggesting that a knockout might be lethal or male sterile. Here, an RNAi approach was used to generate *ANN5* knockdowns using the AGRİKOLA RNAi plasmid carrying 214 bp of the *ANN5* coding sequence under the control of a 35S promoter [15]. The obtained RNAi lines exhibited moderate suppression at anthesis, with *ANN5* levels reduced by 20–80% compared with control Col-0 plants (Additional file 1: Figure S1). Two *ANN5* RNAi lines, *ANN5*-RNAi_13 and *ANN5*-RNAi_15, were selected for detailed phenotypic analysis. Lines were also generated that ectopically overexpressed *ANN5* (OE) under the control of the 35S promoter. OE lines exhibited extremely elevated *ANN5* transcript abundance compared with the wild type (approximately 100-fold increase) (Additional file 1: Figure S1).

Developmental analyses were conducted under two light regimes: i) 12 h of light that ensures stable transition from vegetative to generative development and ii) short day followed by transfer to the long day conditions to accelerate flowering time. Germination of wild-type, *ANN5*-RNAi_13 and *ANN5*-RNAi_15 and OE lines was equivalent under both applied light conditions. Developmental differences between the RNAi lines and wild-type Col-0 plants became apparent during the transition from vegetative to generative development, i.e., at bolting (formation of a flower stem) (Table 1, Additional file 1:

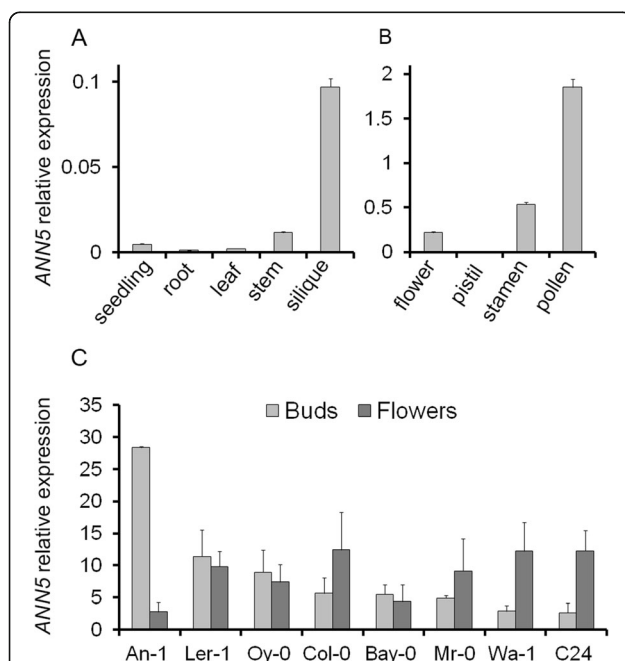


Fig. 1 *ANN5* expression profiles. (a) Average expression of *ANN5* in different organs of wild-type *Arabidopsis* Col-0. (b) Average expression of *ANN5* in reproductive structures of wild-type *Arabidopsis* Col-0. (c) Average expression of *ANN5* in floral buds and flowers at anthesis collected from different *Arabidopsis* genotypes. $n = 3$ biological replicates. Bars represent SD

Table 1 Timing of reproductive development in *Arabidopsis* genotypes with altered *ANN5* expression

Genotypes	[Days]		
	Bolting	Flowering	Silique formation
Col-0	28.58 ± 0.92	34.67 ± 1.26	38.08 ± 1.17
<i>ANN5</i> -RNAi_13	35.67 ^a ± 0.89	44.83 ^a ± 1.36	49.17 ^a ± 1.27
<i>ANN5</i> -RNAi_15	36.08 ^a ± 0.62	47.10 ^a ± 0.63	50.25 ^a ± 0.84
<i>ANN5</i> -OE_2	30.09 ± 1.91	35.45 ± 1.53	38.82 ± 1.44

Plants were cultivated under a short day/long day regime. Values represent days after germination ± standard error, $n = 7$ individual plants per line.

^adenotes statistically significant difference ($p < 0.05$ Dunnett's test). See also Additional file 1: Table S3

Figure S2 and Table S3). *ANN5* RNAi-silenced lines bolted approximately 8 days later than wild-type plants under the sd/ld light regime (Table 1). By contrast, the bolting delay was only approximately 2 days under the 12 h light regime (Additional file 1: Table S3). The subsequent growth stages that is initiation of flowering and first silique formation were delayed by approximately 11 days in *ANN5* RNAi plants compared with control plants but only under sd/ld conditions. Under 12 h light regime the flowering and silique formation time was similar between RNAi lines and wild-type plants. Development of transgenic *Arabidopsis* overexpressing *ANN5* was similar to that of wild-type plants under both light regimes (Table 1, Additional file 1: Table S3). The only developmental difference was that OE plants growth rates increased slightly during rosette formation and stem elongation in comparison to control plants (Additional file 1: Figure S2). Taken together, these results showed that generative development (bolting, flowering, silique formation) of *Arabidopsis* is affected in *ANN5* knockdowns. Statistically significant aberrations during development of *ANN5* RNAi lines were observed only after transferring the plants from short to the long day photoperiod. This finding indicates that *ANN5* knockdowns are more sensitive to variations in length of photoperiod and further implicates *ANN5* in light responses.

Pollen viability and grain size correlate with *ANN5* expression level

Phenotypic studies revealed that onset of the generative stage was delayed in *ANN5* RNAi knockdown plants compared with wild-type Col-0 plants, but plant morphological characteristics, i.e., foliage rosette formation, leaf morphology, and inflorescence structure, were generally unaffected. However, abnormal flowers with additional petals and/or missing stamens were observed in *ANN5* RNAi-silenced plants (Additional file 1: Figure S3). We next tested whether suppression of *ANN5* expression affected pollen viability, using Alexander's solution to differentiate between aborted and non-aborted pollen grains. Anthers of *ANN5*

RNAi-silenced lines contained numerous aborted pollen grains (green-colored) and fewer vivid pollen grains (pink-colored) than wild-type and *ANN5*-OE_2 plants (Additional file 1: Figure S3).

Pollen grains from *ANN5* RNAi-silenced lines were examined further using scanning electron microscopy. Cell wall formation was unaffected in *ANN5* RNAi-silenced and *ANN5*-OE_2 pollen, but mean pollen grain size was affected. *ANN5* RNAi-silenced pollen grains were significantly shorter than *ANN5*-OE_2 pollen grains and wild-type pollen grains (Fig. 2a and c). *ANN5* transcript abundance was previously shown to correlate with pollen maturation in Col-0 plants (Fig. 1c) [7], and we therefore examined pollen maturation in altered and wild-type lines using transmission electron microscopy. Micrographs of pollen grains collected just before and during anthesis showed that progression of pollen grain maturation was similar in all the *Arabidopsis* genotypes examined (Fig. 2d, Additional file 1: Figure S4). Profound reorganization of the VC encompassed i) partial hydrolysis of starch grains deposited within plastids, ii) formation of numerous initially small vesicles that eventually produced elaborate structures forming 'foamy' cytoplasm, and iii) conversion of storage lipids deposited in oil bodies. In contrast with wild-type mature pollen grains, which usually contained a single starch grain per plastid, plastids of *ANN5* RNAi-silenced pollen grains often contained several starch grains (Fig. 2d). Collapsing pollen grains of *ANN5* RNAi knockdown plants (particularly those of the *ANN5*-RNAi_15 line) contained starch grains that were significantly larger and more numerous than those in aborted pollen of wild-type and *ANN5*-OE_2 plants (Fig. 2e). The high starch content in the collapsing pollen grains of *ANN5* RNAi-silenced lines indicated that abortion of the microspores likely occurred before starch hydrolysis, which normally takes place after the bicellular stage by the time of sperm cell formation [2].

ANN5 is required for pollen tube growth in pistils

Pollen grain size and viability were affected by altered expression of *ANN5*. Previous research showed that germination rates and pollen tube growth of *ANN5* RNAi-silenced, OE, and wild-type pollen on a solid medium were similar and that the tubes were free of morphological aberrations [13]. Here, hand-pollination of pistils was used to assess the ability of *ANN5* RNAi-silenced and OE pollen grains to germinate and elongate under natural conditions on stigmas. The pistils were collected 3, 6, and 24 h after pollination and examined for pollen tube growth using a fluorescent technique. Great variations in the growth rate were repeatedly observed among individual pollen tubes derived from the pollen grains of the same *ANN5* RNAi-silenced

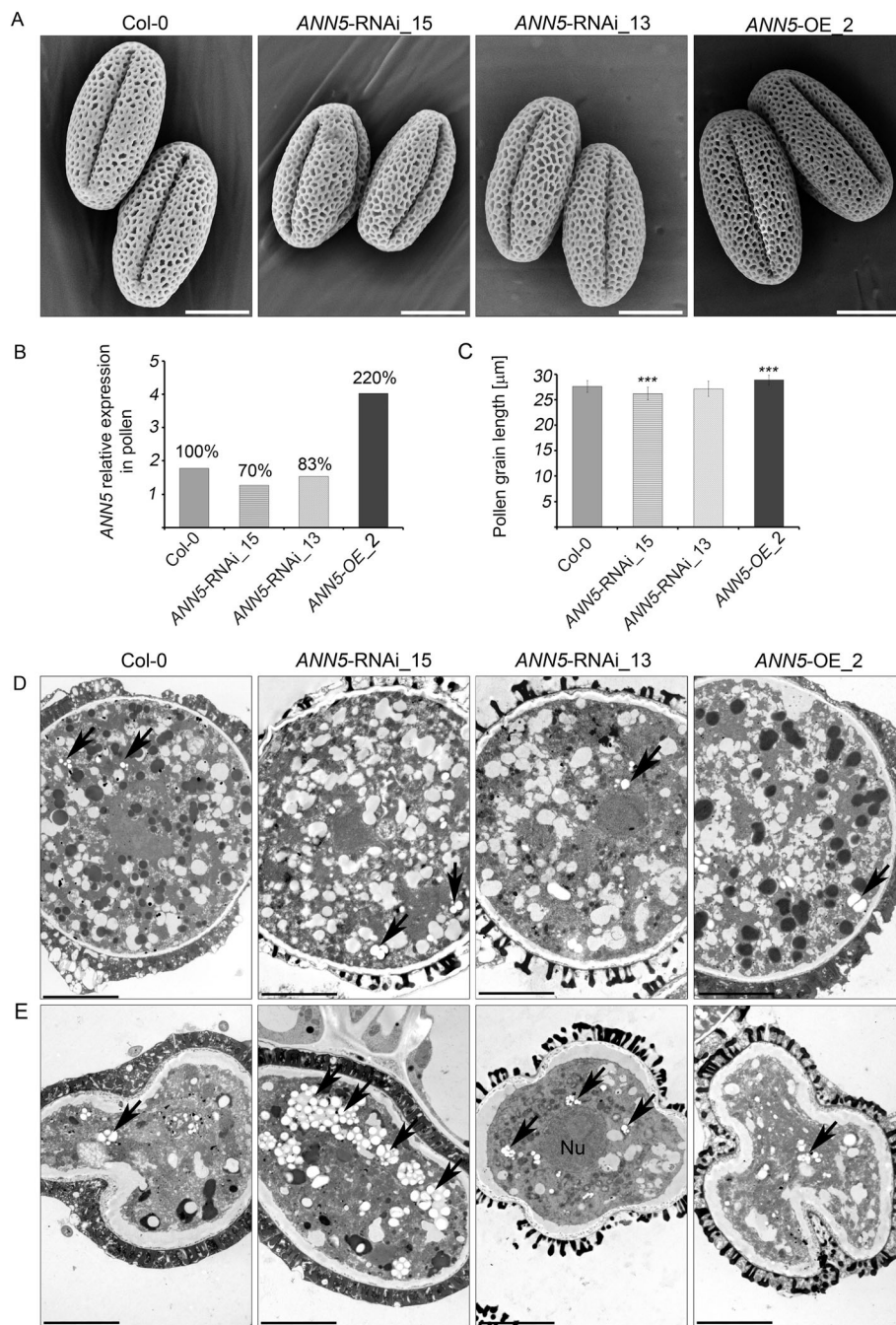


Fig. 2 Impact of *ANN5* expression on mature pollen grain size. **(a)** Scanning electron micrographs of the pollen grains from wild-type Arabidopsis (Col-0), *ANN5*-RNAi_15, *ANN5*-RNAi_13, and *ANN5*-OE_2. Scale bars = 10 μm. **(b)** Relative expression of *ANN5* in mature pollen grains of wild-type Arabidopsis (Col-0), *ANN5*-RNAi_15, *ANN5*-RNAi_13, and *ANN5*-OE_2. Values above each column are expressed as percentage of the *ANN5* expression in comparison to the wild-type (100%). **(c)** Mean length of mature pollen grains from wild-type Arabidopsis (Col-0), *ANN5*-RNAi_15, *ANN5*-RNAi_13, and *ANN5*-OE_2. $n = 50$. Asterisks indicate significant difference compared with values for wild-type pollen (one-way ANOVA, Dunnett post hoc test, * $p < 0.05$; ** $p < 0.01$; *** $p < 0.001$). Bars represent SD. **(d)** and **(e)** Ultrastructure of viable and collapsing pollen grains from Arabidopsis genotypes with altered *ANN5* expression. **(d)** Transmission electron micrographs showing ultrastructural details of viable mature pollen grains, whereas **(e)** depicts aborted pollen grains isolated during anthesis from wild-type Arabidopsis Col-0, *ANN5*-RNAi_15, *ANN5*-RNAi_13, and *ANN5*-OE_2. See also Additional file 1: Figures S3 and S4. Nu: nucleus, black arrow: plastid. Scale bars = 5 μm

line. In contrast, the growth rate of pollen tubes in wild-type and OE line were more equivalent. At 3 and 6 h after pollination the majority of the *ANN5* RNAi-silenced pollen tubes did not enter the pistil transmitting tissue although an excess of pollen grains was applied. At 6 h after pollination, pollen from *ANN5* RNAi knockdown plants exhibited shorter pollen tubes than pollen from wild-type. The differences were verified as statistically significant (Fig. 3). There was no difference in pollen tubes length between *ANN5*-OE_2 and wild-type. However, this discrepancy between *ANN5* RNAi knockdowns and wild-type was no longer observed after 24 h (Additional file 1: Figure S5), by which time pollen tubes in all genotypes had traversed to the ovary and reached the ovules. Pollen tube growth rate is a major determinant of pollen competitive ability, and the arrested or delayed growth of *ANN5* RNAi-silenced pollen tubes in the pistil is indicative of lower male gametophyte competitiveness.

Total seed yield correlates with *ANN5* expression level

Although pollen viability was reduced, *ANN5* RNAi knockdown plants still produced sufficient amounts of viable pollen to successfully reproduce generatively. To quantify the final seed yield from lines with modified *ANN5* expression, 1000 seeds per genotype were collected and the individual seed areas were measured under a stereoscopic microscope. *ANN5* RNAi-silenced seeds were smaller, and *ANN5*-OE_2 seeds were larger, than wild-type Col-0 seeds (Fig. 4). To test whether silique position on the main bolt affected seed size, individual siliques were pooled into groups consisting of five successive siliques and the average seed size was calculated for each group. The average seed size decreased upwards towards the shoot in all the genotypes tested (Fig. 4c). Up to the 15th silique on the main bolt, seeds developed equally in wild-type Col-0 and *ANN5* RNAi knockdown plants. Above the 15th silique, average seed size was lower in *ANN5* RNAi lines than in the wild type. Average seed size decreased consecutively up the main bolt to the last examined silique, at the 40th node. Seeds collected from *ANN5*-OE_2 plants were consistently larger than wild-type seeds between the 11th and 40th nodes on the main bolt.

In *Arabidopsis*, embryos constitute most of the total volume of the mature seed, and the final size of dry seeds thus depends primarily on embryo size. Embryos dissected from *ANN5* RNAi-silenced seeds were smaller than those from wild-type seeds (Fig. 4a). Taken together, these results indicate that *ANN5* affects flower and seed development during the reproductive phase of the *Arabidopsis* life cycle.

Multi-compartment targeting of *ANN5*-GFP

Subcellular localization of *ANN5* was analyzed to gain insights into the mechanisms underlying its functions. Bioinformatics analyses of *ANN5* amino acid sequence suggested its multi-compartment localization. PSORT predicted nuclear, whereas WoLF PSORT and Nuc-Plos plastidial or nucleolar localization, respectively. Transient expression of *35S:ANN5-GFP* and *35S:GFP-ANN5* gene constructs in *Nicotiana benthamiana* leaves was used to examine subcellular localization of *ANN5* in vivo. Confocal microscopy analysis revealed that *ANN5*-GFP was localized to the nucleus, nucleolus, and cytoplasm in all the epidermal cells examined (Fig. 5). In numerous cells, *ANN5*-GFP also accumulated in speckles inside the epidermal plastids, thus being fully consistent with the predictions.

The number of cells in which *ANN5*-GFP localized to the plastids varied significantly between experiments. Notably, when *ANN5* was found in a plastid within a cell, all the plastids of that cell contained *ANN5* (Fig. 5e). N-terminal tagging with GFP resulted in the localization of *ANN5* to the nucleus, nucleolus, and cytoplasm but eliminated plastid distribution (Fig. 5c and d). The punctate pattern of *ANN5* distribution inside the plastids resembled the positioning of nucleoids. To test this, leaf samples expressing *35S:ANN5-YFP* were stained with DAPI: *ANN5* speckles in plastids fully colocalized with DAPI-stained plastid DNA (Fig. 6).

ANN5 interacts with *RABE1b* in plastid nucleoids

To identify *ANN5* binding partners, 12-day-old *Arabidopsis* seedlings expressing *35S:ANN5-YFP* were used in co-immunoprecipitation experiments using a GFP-TRAP system followed by mass spectrometry. Identified proteins were compared between *ANN5*-YFP samples and control GFP samples, and proteins that non-specifically co-purified with GFP were excluded. Many of the identified proteins were predicted to be localized in plastids, suggesting that many of these associations might occur in plastidial nucleoids. To further investigate the specific interactions of *ANN5* in plastids, potential binding partners were identified from proteins predicted to be localized in plastids (Additional file 1: Table S4). Of these, *RABE1b*, which had the highest Mascot score and was a putative GTPase predicted to be plastid associated, was selected for further characterization.

Transient co-expression of *35S:ANN5-YFP* and *35S:RABE1b-CFP* in *N. benthamiana* was used to determine whether *ANN5* and *RABE1b* localized to the same cellular compartment. When each was expressed alone, *ANN5* localized to the nucleus, nucleolus, and plastid nucleoids (Fig. 5), and *RABE1b*-GFP was predominantly found within the plastid nucleoids and, to a lesser extent,

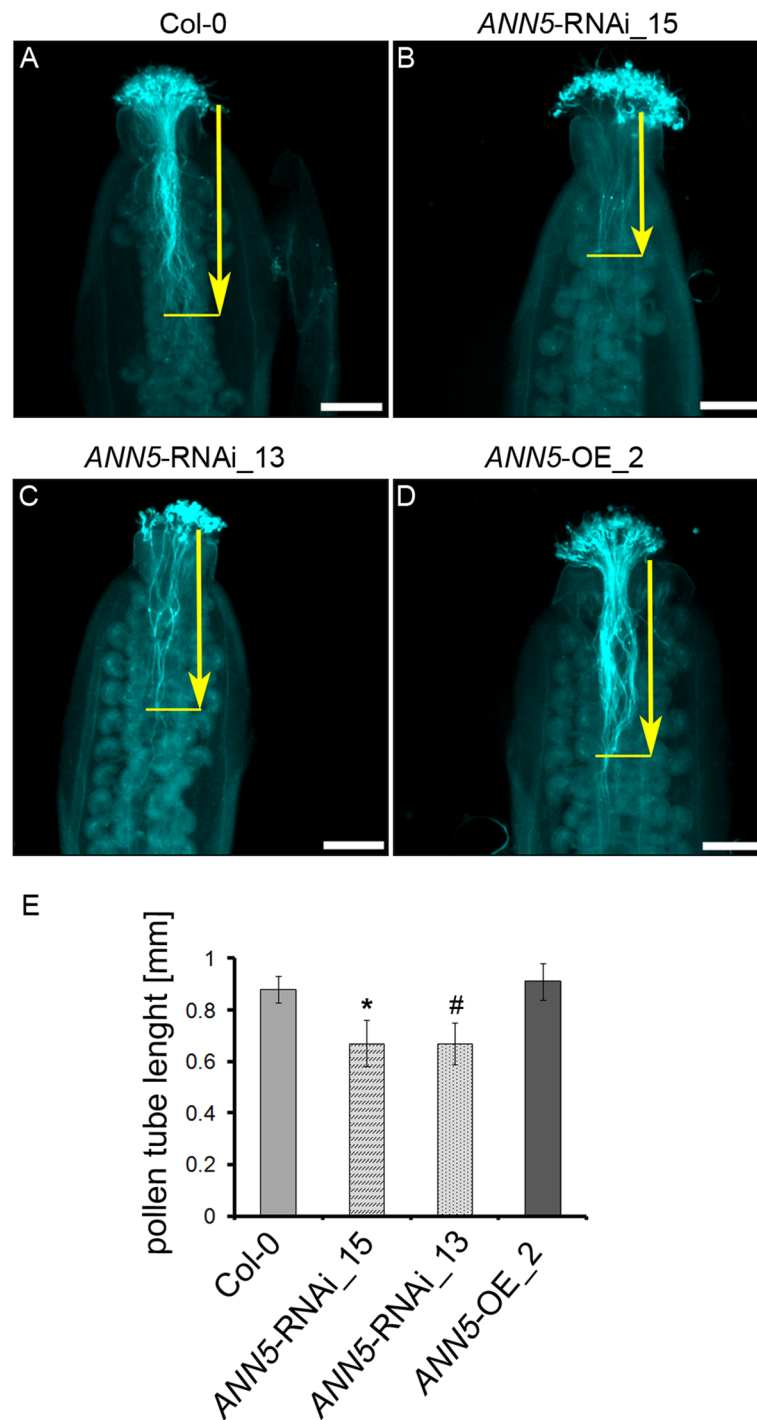


Fig. 3 Pollen tube growth in pistils in *ANN5* RNAi-silenced lines. Pollen tubes were fixed and stained with Aniline Blue 6 h after hand-pollination of (a) wild-type Col-0, (b) *ANN5*-RNAi_15, (c) *ANN5*-RNAi_13, and (d) *ANN5*-OE_2 plants. Aniline blue staining of pollen tubes was performed as described by [19]. Yellow arrows indicate pollen tube length measured from the top of style to the front of the longest pollen tube. (e) Average lengths of pollen tubes in pistils. $n = 3$ independent experiments. Asterisk indicates significant difference compared with the wild type (one-way ANOVA, Dunnett post hoc test, # $p = 0.0501$; * $p < 0.05$; ** $p < 0.01$; *** $p < 0.001$). See also Additional file 1: Figure S5. Scale bars = 200 μm

in the cytoplasm (Additional file 1: Figure S6). When co-expressed, RABE1b-CFP and ANN5-YFP were detected within the same plastidial nucleoids (Fig. 6g).

FLIM-FRET analysis was used to determine whether ANN5 and RABE1b interacted. In plastids, the average lifetime of the donor, RABE1b-CFP, decreased significantly

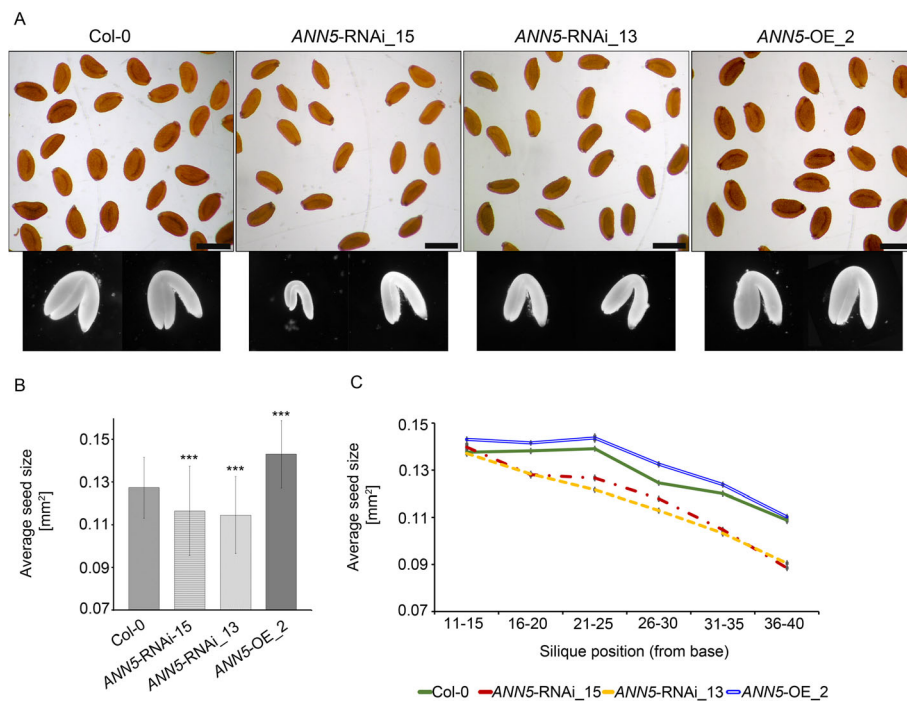


Fig. 4 Impact of *ANN5* expression on seed yield. **(a)** Dry seeds isolated from siliques at positions 36–40 of the main bolt and embryos dissected from rehydrated seeds of wild-type *Arabidopsis* (Col-0), *ANN5*-RNAi₁₅, *ANN5*-RNAi₁₃, and *ANN5*-OE₂. Scale bars = 500 μ m. **(b)** Average sizes of pooled seeds from a single biological replicate. $n = 1000$. Three independent experiments were performed with similar outcomes. Asterisks indicate significant differences compared with wild-type seeds (one-way ANOVA, Dunnett post hoc test, * $p < 0.05$; ** $p < 0.01$; *** $p < 0.001$). Bars represent SD. **(c)** Average sizes of seeds collected from siliques at specified positions on the main bolt, pooled from a single biological replicate. $n = 120$ –150. Bars represent SD

in the presence of the putative acceptor ANN5-YFP (Fig. 6j). This confirmed physical interactions between ANN5 and RAB1b in the plastidial nucleoids.

ANN5 affects chlorophyll content in cotyledons of *Arabidopsis* seedlings

To check whether ANN5 affects plastid-related functions we analyzed greening of *Arabidopsis* seedlings with different ANN5 expression levels. To this end, the seedlings were grown on MS medium in the absence or presence of sucrose, for ten days (Additional file 1: Figure S7A). Whereas ANN5 expression in wild-type seedlings was hardly detectable, the ectopic expression of ANN5 resulted in abundant transcript levels (Additional file 1: Figure S7C). Spectrophotometric analyses of chlorophyll a and b in the seedling revealed that the total chlorophyll content in ANN5 OE lines was significantly lower than in wild-type seedlings on both types of media (Additional file 1: Figure S7B). We next compared, the expression of selected genes related to the chlorophyll metabolism, by RT-qPCR analysis (Additional file 1: Figure S7C and D). Both ANN5 OE lines showed reduced expression of genes related to chlorophyll biosynthesis (*HEMA1*, *GUN4*, *GUN5*, *CHL1*) and photosynthesis (*PsbA*, *LHCBI*) in

comparison to the wild-type, whereas the expression of chlorophyll catabolic genes (*NYC1*, *NYE1*, *SAG29*) was higher but only in the presence of sucrose. These data show that ANN5 overexpression affects chlorophyll accumulation in *Arabidopsis* seedlings.

Discussion

ANN5 plays an essential role during reproductive development of *Arabidopsis*

The results from this study provide new insights into the function of ANN5 during *Arabidopsis* development. Large quantitative differences in ANN5 transcript accumulation were observed between organs of wild-type *Arabidopsis* (Fig. 1), with the highest mRNA levels found in mature pollen. These results were consistent with a previous study showing that RNAi-mediated suppression of ANN5 affected pollen development and led to reduced pollen viability [8]. Viable pollen grains from our RNAi knockdown lines were smaller in size and their growth in the pistil was hampered when compared with wild-type pollen grains (Figs. 2 and 3). In addition to its role in pollen grain development, through phenotypic studies, we showed that ANN5 was also involved in both embryo development and the transition from vegetative to generative growth (Table 1, Fig. 4). Suppression of

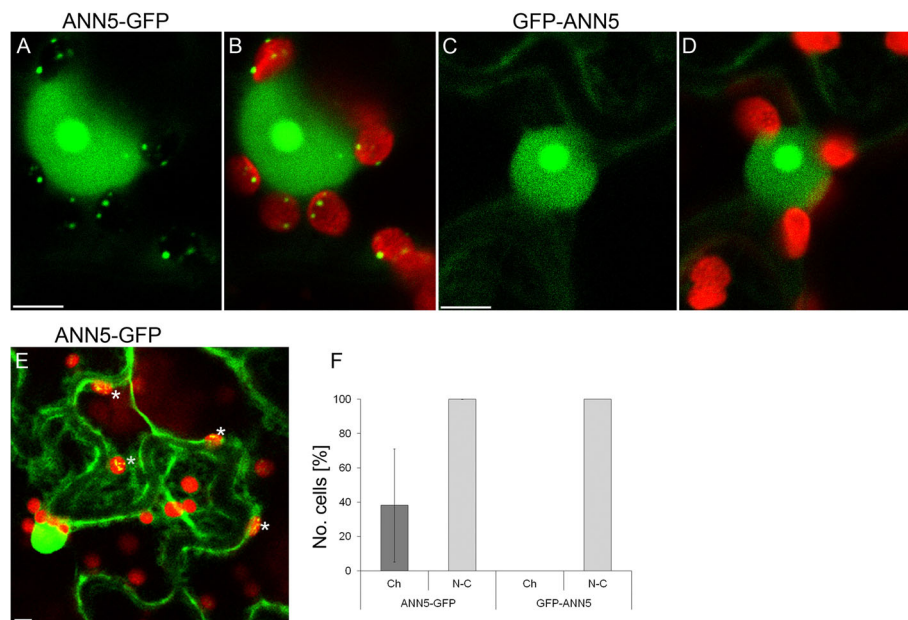


Fig. 5 Subcellular localization of ANN5 in epidermal cells. Confocal optical sections of *N. benthamiana* leaf epidermal cells depicting localization of (a) C-terminus tagged ANN5 (35S:ANN5-GFP), (b) ANN5-GFP localization merged with chlorophyll autofluorescence, (c) N-terminus tagged ANN5 (35S:GFP-ANN5), and (d) GFP-ANN5 localization merged with chlorophyll autofluorescence. Scale bars = 10 μ m. (e) Confocal optical section of two neighboring epidermal cells revealing different patterns of ANN5-GFP localization within plastids. White asterisks denote plastids containing ANN5-GFP. Scale bar = 10 μ m. (f) Percentage of cells showing nucleo-cytoplasmic (N-C) or plastidial (Ch) localization of ANN5-GFP, and GFP-ANN5. The data were obtained in three independent experiments. Bars represent SD

ANN5 resulted in extended vegetative development and reduced embryo size, whereas constitutive overexpression of ANN5 positively influenced both pollen and embryo sizes. We thus conclude that ANN5 promotes cell growth, predominantly during the reproductive development of Arabidopsis.

An insight into the role of ANN5 in plastid function

ANN5 displayed an unusual pattern of subcellular localization compared with the predominantly cytosolic localization observed for other plant annexins [11]. ANN5 occupied two DNA-containing cellular compartments (nucleus and plastid) and associated with prominent sub-organellar structures (nucleolus and plastidial nucleoids) (Figs. 5 and 6). The plastidial localization of ANN5 in a subset of cells suggested that ANN5 was mobile and might traffic to the plastids. N-terminal tagging of ANN5 with GFP inhibited its targeting to plastids while its nuclear distribution remained unaffected (Fig. 5). This confirmed that the N-terminal domain was essential for ANN5 import to the plastids. Moreover, mass spectrometry analysis of the C-terminal GFP fusion of ANN5 detected the peptide derived from the N-terminal region, suggesting that this signal was not cleavable. However, a scenario in which nuclear import of ANN5 does not require processing but import into the plastids requires cleavage of the N-terminal signal peptide cannot be

excluded. This scenario would imply that transport of ANN5 from the nucleus to plastids is unidirectional or, alternatively, that the N-terminal sequence is protected from cleavage in the plastids, thus allowing shuttling of ANN5 between compartments.

Plastids are plant-specific organelles that possess their own genome and complete gene expression system [29]. Each type of plastid, except gerontoplasts, contains multiple copies of plastidial DNA arranged into compact structures termed nucleoids. Plastid nucleoids contain RNA and a multitude of proteins involved in the maintenance of nucleoid functions such as transcription, replication, RNA processing, and ribosome assembly [30, 31]. However, the majority of the proteins required for proper plastid function are encoded by the nuclear genome. Regulation of plastid functions is therefore continuously coordinated with the activity of the nuclear genome. An increasing body of evidence suggests that many nuclear proteins are also targeted to the plastids. The mechanism of dual targeting for many proteins is unclear. However, previous studies suggested that dual targeting might be either simultaneous or sequential [32]. Proteins that were initially targeted to the plastids and subsequently relocated to the nucleus might have a role in retrograde signaling. This mechanism of translocation was recently confirmed for HEMERA/pTAC12, which was targeted first to plastids and, after cleavage of

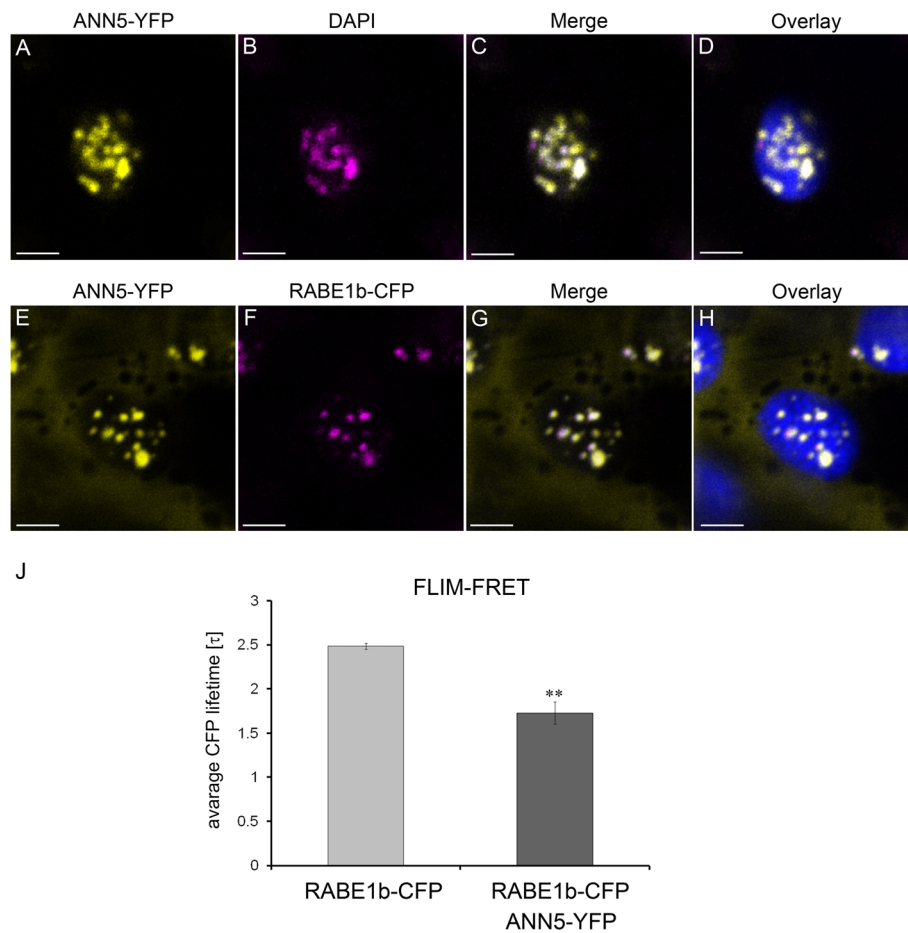


Fig. 6 ANN5 interacts with RABE1b in plastidial nucleoids. Upper panel (a–d): Confocal optical section of *N. benthamiana* leaf epidermal plastid transiently expressing ANN5-YFP (a) and counterstained with DAPI (1 $\mu\text{g ml}^{-1}$ for 15 min at room temperature) after fixation with 2% paraformaldehyde (24 h at 4 $^{\circ}\text{C}$) (b). Pseudocolored fluorescence of (A) ANN5-YFP (yellow), (b) DAPI (magenta), (c) merged channels of ANN5-YFP and DAPI, and (d) overlaid with chlorophyll autofluorescence (blue). Lower panel (E–H): Confocal optical section of *N. benthamiana* leaf epidermal plastid transiently co-expressing ANN5-YFP (E) and RABE1b-CFP (F). Pseudocolored fluorescence of (e) ANN5-YFP (yellow), (f) RABE1b-CFP (magenta), (g) merged channels of ANN5-YFP and RABE1b-CFP, and (h) overlaid with chlorophyll autofluorescence (blue). See also Additional file 1: Figure S6. Scale bar = 10 μm . (j) FLIM-FRET analysis of interactions between ANN5 and RABE1b in plastidial nucleoids. Average CFP lifetime was measured in the donor leaf samples of *N. benthamiana* expressing only RABE1b-CFP and in the presence of acceptor in samples co-expressing RABE1b-CFP and ANN5-YFP. $n = 7$ individual epidermal cells. Measurements were performed on a single plastid per cell, ** indicates statistically significant differences (Student's t-test, $p < 0.05$)

its transit peptide, was relocated to the nucleus [33]. Our results suggest that ANN5 is localized primarily to the nucleus and then relocates to plastids. We hypothesize that ANN5 translocates from the nucleus directly to the plastidial nucleoid and then modifies plastid functions. Consistent with this model ANN5 negatively affected chlorophyll content and expression of the genes related to chlorophyll metabolism e.g. *HEMA1*, *GUN4*, *GUN5*, *CHL11*, *PsbA*, *LHCBI* (Additional file 1: Figure S7). Principal component analysis (PCA) performed on expression levels of these genes, showed visible discrimination between groups corresponding to Col-0 and ANN5-overexpressing lines, suggesting a global influence of ANN5 presence on chlorophyll metabolism. The

fact that expression of the genes examined is sensitive to plastid signals [34–38] suggests that ANN5 is involved in communication between plastid and the nucleus. Interestingly, the addition of sucrose to the growth medium up-regulated genes associated with chlorophyll degradation in ANN5-overexpressing lines (*NYC1*, *NYE1*, *SAG29*) that implicates ANN5 in sucrose signaling pathway. Further work is needed to identify the specific signals that drive ANN5-dependent reprogramming of plastid function. Recent studies revealed that retrograde regulation of the nuclear gene expression involved calcium signaling [39]. Calcium ions were released from the plastids to the cytosol in response to specific stimuli [40]. Cytosolic calcium transients were mediated by a

plastid-localized calcium-sensing receptor, CAS. This process activated a MAP (mitogen-activated protein) kinase cascade, which in turn regulated activity of transcription factor ABI4 in the nucleus. The pattern of ANN5 subcellular distribution together with its calcium-dependent lipid-binding capacity might reflect its role in the crosstalk between the nucleus and plastids or in intraorganellar calcium signaling. Notably, previous research showed that intracellular redistribution of annexins in response to particular environmental stimuli was induced by calcium transients in the cytosol [41].

In summary, we hypothesize that ANN5 acts as a specific calcium signature decoder and orchestrates plastidial and nuclear genome activities in response to developmental and environmental cues. Disturbed bilateral communication between the nucleus and plastids might explain the retardation of reproductive development in ANN5 RNAi-silenced plants. However, our hypothesis that the intracellular redistribution of ANN5 is calcium-dependent requires experimental verification.

During plastid differentiation, nucleoids undergo intensive remodeling and changes in their spatial arrangement but remain associated with the plastidial internal membrane [31]. Although poorly developed, the internal membrane system of Arabidopsis pollen grain plastids is thought to be photosynthetically active [2]. Since both pollen and embryo are sink organs that take up nutrients from other parts of the plant, their photosynthetic structures might be associated with processes other than conversion of light energy into sugars. Photosynthetic complexes in pollen grain plastids might act similarly to embryos and generate reactive oxygen species to regulate processes both inside plastids and, in response to the retrograde signaling, in the nucleus [42–44]. Recent studies suggested that plastidial nucleoids acted as a docking platform for the proteins involved in plastid metabolism that were regulated by redox changes in the photosynthetic apparatus [45]. One can thus speculate that ANN5, by combining membrane- and calcium ion-binding capacities, might act at the interface between the nucleoids and plastidial internal membranes. The majority of plastid/nucleus-targeted proteins were shown to be involved in plastid DNA/RNA metabolism or translation [46]. We therefore propose that ANN5 association with membrane-bound nucleoids may be required for transmission of signals from the photosynthetic apparatus to the transcription/translation machinery of the plastid.

ANN5 expression correlated with post-meiotic development of microspores, which was accompanied by substantial reorganization of the plastid function. ANN5 promoter activity was observed in the bicellular microspore [8], whereas ANN5 mRNA levels were at their

maximum in the tricellular microspore and remained high in mature pollen [7]. At the initial stage of pollen grain development, plastids intensively accumulate the starch that is deposited until the bicellular stage of microspore development [2, 47]. From this stage until pollen grain maturity, deposited starch grains are almost completely hydrolyzed. Previous studies reported that plastids generated energy via glycolysis to support pollen maturation and pollen tube growth [6]. These findings together with our observation that ANN5 localized to plastids and affected the expression of the nuclear genes encoding plastid proteins raises the possibility that ANN5 may be involved in plastid reorganization at later stages of pollen development. Starch grains accumulated in aborted pollen grains of the ANN5 RNAi_15 line. This suggested that abortion of pollen grains occurred at the bicellular stage, which was consistent with previous studies [8]. We thus conclude that suppression of ANN5 disables progression to the next developmental stage and finally leads to pollen abortion at the bicellular stage. Although average pollen grain size was significantly reduced in ANN5 RNAi lines, individual pollen grains developed without any obvious aberrations (Fig. 2), possibly because ANN5 was not completely suppressed (Fig. 2b). The ANN5 knockdown phenotype resembled the phenotypes of Arabidopsis mutant lines defective in genes related to plastid function, including plastid glycolysis, that affected pollen formation, pollen tube growth, and embryogenesis [6, 48, 49]. Suppression of ANN5 likely leads to plastid malfunction and, in turn, may affect the energy status of the cell and consequently leading to reduced growth or collapse of cells, that we hypothesize occurs during pollen maturation and embryo growth.

Importance of the interaction between ANN5 and RABE1b for plastid functions

A large number of predicted plastid-targeted proteins were identified that co-purified with ANN5, including RABE1b, GAPA and GAPB subunits of glyceraldehyde 3-phosphate dehydrogenase (GAPDH), plastid chaperones, and ribosomal proteins (Additional file 1: Table S4). Further characterization of RABE1b revealed physical interactions with ANN5 within plastidial nucleoids (Fig. 6j). Although the biological function of RABE1b is unknown, the protein contains a GTPase domain and is classified as a member of the Rab GTPase family, suggesting that it may be involved in intracellular trafficking [50]. Several proteins involved in the transport machinery were predicted to be plastid targeted, raising suggestions of vesicular transport within plastids [51]. Given that both annexins and Rab GTPases are implicated in membrane trafficking, it is plausible that both ANN5 and RABE1b are required to maintain the organization and function of plastidial nucleoids attached to the plastid internal membranes.

RABE1b also exhibits sequence similarities to translation elongation factor EFTu/EF1A (www.arabidopsis.org) therefore it is likely that belongs to the translational GTPases [52]. In our hypothetical model for ANN5 function, we propose that ANN5 interaction with RABE1b occurs in the plastid nucleoids in the bicellular microspore. We hypothesize that cooperative action of ANN5 and RABE1b may drive the reprogramming of plastid function in maturing pollen grain. Further studies are required to elucidate the interplay between ANN5 and RABE1b in plastidial nucleoids and to determine whether their functions are associated with DNA/RNA metabolism or protein synthesis.

Conclusions

Collectively, through this work, we showed that ANN5 was required for basal developmental processes during the transition from vegetative to generative growth, male gametophyte development and growth of the embryo. ANN5 likely accomplishes these activities through its membrane trafficking function in the nucleus and plastidial nucleoids. Our future work will focus on how the interaction between ANN5 and RABE1b could influence plastid functions, particularly during pollen grain development.

Additional file

Additional file 1: Table S1. List of binary plasmids used in this study. **Table S2.** Oligonucleotides used for RT-qPCR. **Figure S1.** Analysis of ANN5 transcript abundance in flowers at anthesis collected from ANN5 RNAi-silenced and overexpressing lines. **Figure S2.** Phenotypic characteristics of Arabidopsis with altered ANN5 expression cultivated under a 12 h light regime. **Table S3.** Timing of reproductive development of Arabidopsis genotypes with altered ANN5 expression cultivated under a 12 h light regime. **Figure S3.** Impact of RNAi-mediated suppression of ANN5 on pollen viability. **Figure S4.** Ultrastructure of bicellular microgametophytes isolated from Arabidopsis lines with altered ANN5 expression. **Figure S5.** Growth of pollen tubes in pistils 24 h after hand-pollination. **Table S4.** List of plastidial proteins co-purified with ANN5-YFP and identified by mass spectrometry. **Figure S6.** Subcellular localization of RABE1b-GFP in *N. benthamiana* leaf epidermal cells. **Figure S7.** Overexpression of ANN5 influences chlorophyll content and alters expression of genes related to chlorophyll metabolism in Arabidopsis seedlings. (PDF 1160 kb)

Abbreviations

FLIM-FRET: Fluorescence Lifetime Imaging Microscopy-Förster Resonance Energy Transfer; Id: long day; OE: Overexpression; PCA: Principal component analysis; RNAi: RNA interference; sd: Short day; SD: Standard deviation; VC: Vegetative cell

Funding

This work was supported by Polish National Science Centre, Grant 2012/05/B/NZ9/00984, to Malgorzata Lichocka. Experiments were carried out with the use of CePT infrastructure financed by the European Union: the European Regional Development Fund (Innovative economy 2007–13, Agreement POIG.02.02.00–14-024/08–00). The funders had no role in study design, data collection and analysis, decision to publish, or preparation of the manuscript.

Availability of data and materials

All data generated or analyzed during this study are included in this published article and its supplementary information files. Arabidopsis accessions: Col-0, An-1, Bay-0, C24, Ler-1, Mr-0, Oy-0 and Wa-1 were obtained from NASC (<http://arabidopsis.info/>). Agrikola binary plasmids (<http://www.agrikola.org/>) for targeted ANN5 RNAi silencing were obtained from NASC (<http://arabidopsis.info/>). Arabidopsis lines generated in this study and materials integral to the findings presented in this article are available on request at the Institute of Biochemistry and Biophysics, Polish Academy of Science in Warsaw (Poland) in the laboratory of corresponding author Malgorzata Lichocka (mlichocka@ibb.waw.pl).

Authors' contributions

ML and JH conceived and directed the research. ML, WR, MK and JH designed the experiments. ML, WR, KM, IBF, ACh, MS, ES performed research and analyzed data. ML, MAS, MK and JH wrote the paper. All authors have read and approved the final version of the manuscript.

Ethics approval and consent to participate

Not applicable.
Consent for publication
Not applicable.

Competing interests

The authors declare that they have no competing interests.

Publisher's Note

Springer Nature remains neutral with regard to jurisdictional claims in published maps and institutional affiliations.

Author details

¹Institute of Biochemistry and Biophysics, Polish Academy of Sciences, Pawlowskiego 5a, 02-106 Warsaw, Poland. ²Department of Botany, Warsaw University of Life Sciences (SGGW), Warsaw, Poland. ³Department of Biological Sciences, University of Calgary, Calgary, AB, Canada. ⁴Max-Planck Institute for Plant Breeding Research, Cologne, Germany.

Received: 11 January 2018 Accepted: 30 August 2018

Published online: 06 September 2018

References

- Owen HA, Makaroff CA. Ultrastructure of microsporogenesis and microgametogenesis in *Arabidopsis thaliana* (L.) Heynh. Ecotype Wassilewskija (Brassicaceae). *Protoplasma*. 1995;185:7–21.
- Kuang A, Musgrave ME. Dynamics of vegetative cytoplasm during generative cell formation and pollen maturation in *Arabidopsis thaliana*. *Protoplasma*. 1996;194:81–90.
- Carrizo Garcia C, Nepi M, Pacini E. It is a matter of timing: asynchrony during pollen development and its consequences on pollen performance in angiosperms—a review. *Protoplasma*. 2017;254(1):57–73.
- Pacini E, Guarnieri M, Nepi M. Pollen carbohydrates and water content during development, presentation, and dispersal: a short review. *Protoplasma*. 2006;228(1–3):73–7.
- Franchi G, Bellani L, Nepi M, Pacini E. Types of carbohydrate reserves in pollen: localization, systematic distribution and ecophysiological significance. *Flora*. 1996;191:143–59.
- Selinski J, Scheibe R. Pollen tube growth: where does the energy come from? *Plant Signal Behav*. 2014;9(12):e977200.
- Rutley N, Twell D. A decade of pollen transcriptomics. *Plant Reprod*. 2015;28(2):73–89.
- Zhu J, Yuan S, Wei G, Qian D, Wu X, Jia H, Gui M, Liu W, An L, Xiang Y. Annexin5 is essential for pollen development in *Arabidopsis*. *Mol Plant*. 2014;7(4):751–4.
- Konopka-Postupolska D, Clark G. Annexins as overlooked regulators of membrane trafficking in plant cells. *Int J Mol Sci*. 2017;18(4)
- Davies JM. Annexin-mediated calcium Signalling in plants. *Plants (Basel)*. 2014;3(1):128–40.
- Laohavisit A, Davies JM. Annexins. *New Phytol*. 2011;189(1):40–53.
- Laohavisit A, Brown AT, Cicuta P, Davies JM. Annexins: components of the calcium and reactive oxygen signaling network. *Plant Physiol*. 2010;152(4):1824–9.

13. Zhu J, Wu X, Yuan S, Qian D, Nan Q, An L, Xiang Y. Annexin5 plays a vital role in Arabidopsis pollen development via Ca²⁺-dependent membrane trafficking. *PLoS One*. 2014;9(7):2014.
14. Lee LY, Fang MJ, Kuang LY, Gelvin SB. Vectors for multi-color bimolecular fluorescence complementation to investigate protein-protein interactions in living plant cells. *Plant Methods*. 2008;4:24.
15. Hilson P, Allemeersch J, Altmann T, Aubourg S, Avon A, Beynon J, Bhalerao RP, Bitton F, Caboche M, Cannoot B, et al. Versatile gene-specific sequence tags for Arabidopsis functional genomics: transcript profiling and reverse genetics applications. *Genome Res*. 2004;14(10B):2176–89.
16. Hajdukiewicz P, Svab Z, Maliga P. The small, versatile pPZP family of agrobacterium binary vectors for plant transformation. *Plant Mol Biol*. 1994;25(6):989–94.
17. Clough SJ, Bent AF. Floral dip: a simplified method for agrobacterium-mediated transformation of Arabidopsis thaliana. *Plant J*. 1998;16(6):735–43.
18. Lu Y. RNA Isolation from Arabidopsis Pollen Grains. *Bio-protocol*. 2011; Bio101:e67. <https://doi.org/10.21769/BioProtoc.67>.
19. Mori T, Kuroiwa H, Higashiyama T, Kuroiwa T. GENERATIVE CELL SPECIFIC 1 is essential for angiosperm fertilization. *Nat Cell Biol*. 2006;8(1):64–71.
20. Herridge R, Day R, Baldwin S, Macknight R. Rapid analysis of seed size in Arabidopsis for mutant and QTL discovery. *Plant Methods*. 2011;7(1):3.
21. Giska F, Lichocka M, Piechocki M, Dadlez M, Schmelzer E, Hennig J, Krzymowska M. Phosphorylation of HopQ1, a type III effector from *Pseudomonas syringae*, creates a binding site for host 14-3-3 proteins. *Plant Physiol*. 2013;161(4):2049–61.
22. Gosh A, Pareek A, Singla-Pareek SL. Leaf disc stress tolerance assay for tobacco. *Bio-protocol*. 2015;5(7)
23. Nakagawa T, Suzuki T, Murata S, Nakamura S, Hino T, Maeo K, Tabata R, Kawai T, Tanaka K, Niwa Y, et al. Improved gateway binary vectors: high-performance vectors for creation of fusion constructs in transgenic analysis of plants. *Biosci Biotechnol Biochem*. 2007;71(8):2095–100.
24. Shen HB, Chou KC. Nuc-PLOC: a new web-server for predicting protein subnuclear localization by fusing PseAA composition and PsePSSM. *Protein Eng Des Sel*. 2007;20(11):561–7.
25. Smyth DR, Bowman JL, Meyerowitz EM. Early flower development in Arabidopsis. *Plant Cell*. 1990;2(8):755–67.
26. Golinowski W, Grundler FMW, Sobczak M. Changes in the structure of Arabidopsis thaliana during female development of the plant-parasitic nematode *Heterodera schachtii*. *Protoplasma*. 1996;194(1–2):103–16.
27. Kleemann J, Rincon-Rivera LJ, Takahara H, Neumann U, Ver Loren van Themaat E, van der does HC, Hacquard S, Stuber K, Will I, Schmalenbach W, et al. Sequential delivery of host-induced virulence effectors by appressoria and intracellular hyphae of the phytopathogen *Colletotrichum higginsianum*. *PLoS Pathog*. 2012;8(4):e1002643.
28. Clark GB, Sessions A, Eastburn DJ, Roux SJ. Differential expression of members of the annexin multigene family in Arabidopsis. *Plant Physiol*. 2001;126(3):1072–84.
29. Sato S, Nakamura Y, Kaneko T, Asamizu E, Tabata S. Complete structure of the chloroplast genome of Arabidopsis thaliana. *DNA Res*. 1999;6(5):283–90.
30. Majeran W, Friso G, Asakura Y, Qu X, Huang M, Ponnala L, Watkins KP, Barkan A, van Wijk KJ. Nucleoid-enriched proteomes in developing plastids and chloroplasts from maize leaves: a new conceptual framework for nucleoid functions. *Plant Physiol*. 2012;158(1):156–89.
31. Powikrowska M, Oetke S, Jensen PE, Krupinska K. Dynamic composition, shaping and organization of plastid nucleoids. *Front Plant Sci*. 2014;5:424.
32. Krause K, Krupinska K. Nuclear regulators with a second home in organelles. *Trends Plant Sci*. 2009;14(4):194–9.
33. Nevarez PA, Qiu Y, Inoue H, Yoo CY, Benfey PN, Schnell DJ, Chen M. Mechanism of dual targeting of the Phytochrome signaling component HEMERA/pTAC12 to plastids and the nucleus. *Plant Physiol*. 2017;173(4):1953–66.
34. McCormac AC, Terry MJ. Light-signalling pathways leading to the coordinated expression of HEMA1 and Lhcb during chloroplast development in Arabidopsis thaliana. *Plant J*. 2002;32(4):549–59.
35. McCormac AC, Terry MJ. The nuclear genes Lhcb and HEMA1 are differentially sensitive to plastid signals and suggest distinct roles for the GUN1 and GUN5 plastid-signalling pathways during de-etiolation. *Plant J*. 2004;40(5):672–85.
36. Ikegami A, Yoshimura N, Motohashi K, Takahashi S, Romano PG, Hisabori T, Takamiya K, Masuda T. The CHL1 subunit of Arabidopsis thaliana magnesium chelatase is a target protein of the chloroplast thioredoxin. *J Biol Chem*. 2007;282(27):19282–91.
37. Brzezowski P, Sharifi MN, Dent RM, Morhard MK, Niyogi KK, Grimm B. Mg chelatase in chlorophyll synthesis and retrograde signaling in *Chlamydomonas reinhardtii*: CHL12 cannot substitute for CHL11. *J Exp Bot*. 2016;67(13):3925–38.
38. Mochizuki N, Tanaka R, Tanaka A, Masuda T, Nagatani A. The steady-state level of mg-protoporphyrin IX is not a determinant of plastid-to-nucleus signaling in Arabidopsis. *Proc Natl Acad Sci U S A*. 2008;105(39):15184–9.
39. Guo H, Feng P, Chi W, Sun X, Xu X, Li Y, Ren D, Lu C, David Rochaix J, Leister D, et al. Plastid-nucleus communication involves calcium-modulated MAPK signalling. *Nat Commun*. 2016;7:12173.
40. Stael S, Wurzinger B, Mair A, Mehler N, Vothknecht UC, Teige M. Plant organellar calcium signalling: an emerging field. *J Exp Bot*. 2012;63(4):1525–42.
41. Clark GB, Morgan RO, Fernandez MP, Roux SJ. Evolutionary adaptation of plant annexins has diversified their molecular structures, interactions and functional roles. *New Phytol*. 2012;196(3):695–712.
42. Alloquent G, Osorio S, Vu JL, Falconet D, Jouhet J, Kuntz M, Fernie AR, Lerbs-Mache S, Macherel D, Courtois F, et al. Adjustments of embryonic photosynthetic activity modulate seed fitness in Arabidopsis thaliana. *New Phytol*. 2015;205(2):707–19.
43. Kim C, Lee KP, Baruah A, Nater M, Gobel C, Feussner I, Apel K. (1)O₂-mediated retrograde signaling during late embryogenesis predetermines plastid differentiation in seedlings by recruiting abscisic acid. *Proc Natl Acad Sci U S A*. 2009;106(24):9920–4.
44. Yoshida K, Hisabori T. Two distinct redox cascades cooperatively regulate chloroplast functions and sustain plant viability. *Proc Natl Acad Sci U S A*. 2016;113(27):E3967–76.
45. Melonek J, Oetke S, Krupinska K. Multifunctionality of plastid nucleoids as revealed by proteome analyses. *Biochim Biophys Acta*. 2016;1864(8):1016–38.
46. Krause K, Oetke S, Krupinska K. Dual targeting and retrograde translocation: regulators of plant nuclear gene expression can be sequestered by plastids. *Int J Mol Sci*. 2012;13(9):11085–101.
47. Quilichini TD, Douglas CJ, Samuels AL. New views of tapetum ultrastructure and pollen exine development in Arabidopsis thaliana. *Ann Bot*. 2014;114(6):1189–201.
48. Niewiadomski P, Knappe S, Geimer S, Fischer K, Schulz B, Unte US, Rosso MG, Ache P, Flugge UI, Schneider A. The Arabidopsis plastidic glucose 6-phosphate/phosphate translocator GPT1 is essential for pollen maturation and embryo sac development. *Plant Cell*. 2005;17(3):760–75.
49. Datta R, Chamusca KC, Chourey PS. Starch biosynthesis during pollen maturation is associated with altered patterns of gene expression in maize. *Plant Physiol*. 2002;130(4):1645–56.
50. Vernoud V, Horton AC, Yang Z, Nielsen E. Analysis of the small GTPase gene superfamily of Arabidopsis. *Plant Physiol*. 2003;131(3):1191–208.
51. Paul P, Simm S, Mirus O, Scharf KD, Fragkostefanakis S, Schleiff E. The complexity of vesicle transport factors in plants examined by orthology search. *PLoS One*. 2014;9(5):e97745.
52. Maracci C, Rodnina MV. Review: translational GTPases. *Biopolymers*. 2016;105(8):463–75.

Ready to submit your research? Choose BMC and benefit from:

- fast, convenient online submission
- thorough peer review by experienced researchers in your field
- rapid publication on acceptance
- support for research data, including large and complex data types
- gold Open Access which fosters wider collaboration and increased citations
- maximum visibility for your research: over 100M website views per year

At BMC, research is always in progress.

Learn more biomedcentral.com/submissions

