

# eSciDoc Solutions in the MPG – Current Status

## The functional view

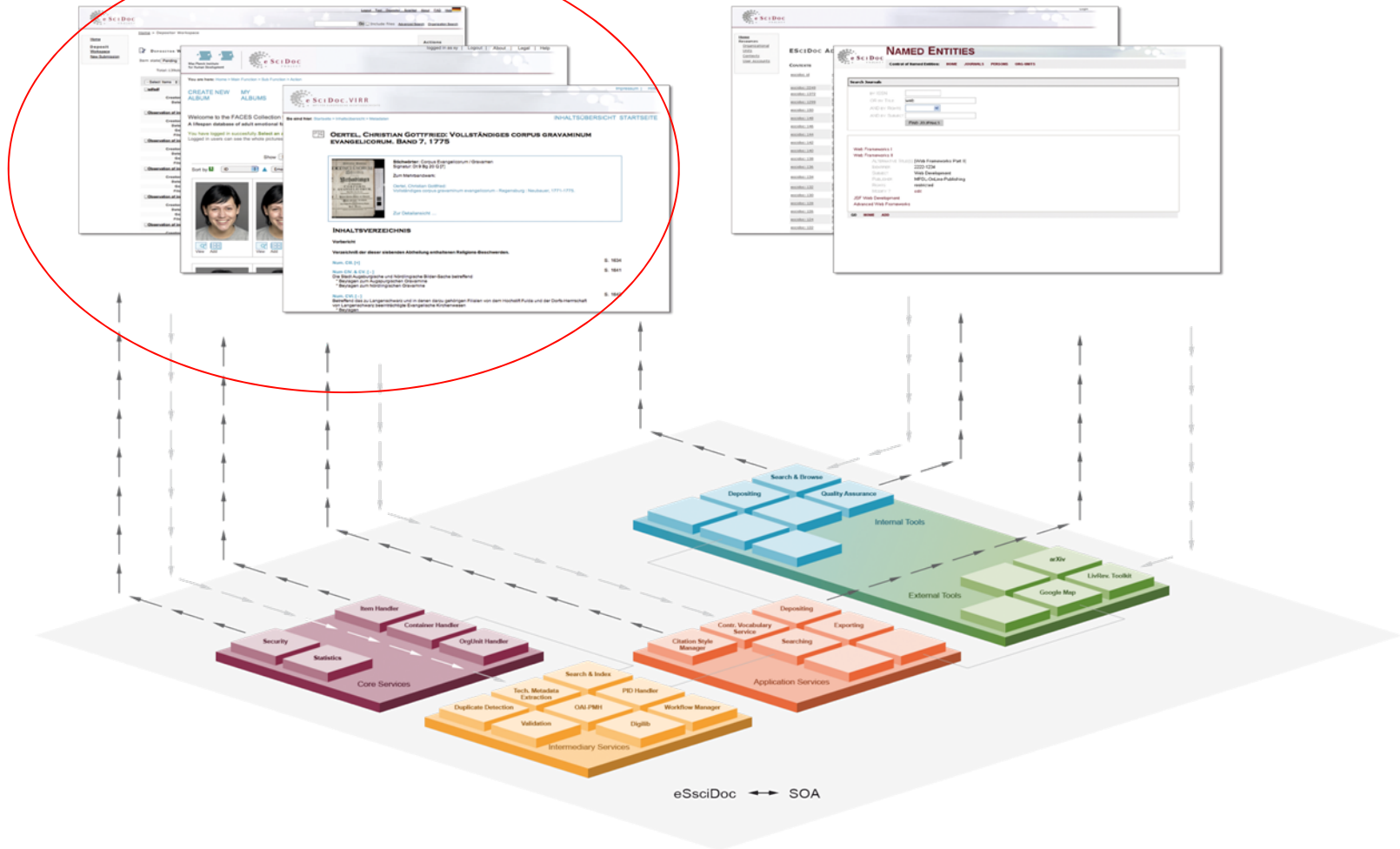
eSciDoc Days

15th-16th of June 2009

Fachinformationszentrum (FIZ) Karlsruhe

Ulla Tschida

# eSciDoc project landscape



## PubMan

- Productive users
  - MPI Gravitational Physics
  - MPI Psycholinguistics
  - National Institute for Material Sciences (NIMS)
- Increasing deposits since August 2008
- Rollout in MPG started
  - Kick-off MPG Librarian Meeting in May 2009
  - Institute-specific visits to prepare migration and transition from eDoc
  - 7 additional „migration candidates“ since May09
- June 2009
  - More than 2700 items released (affiliated to MPG)
  - 250 registered users

## PubMan – Scenarios covered

- Deposits by Scientists
- Mediated deposits by Librarians
- Various Submission and Import-facilities
- Various Export and Re-use facilities
  - Feeding of local webpages
- PubMan as Archive - Integrated Wordpress-Blog
  - Reinhold von Sengbusch – selected publications

## PubMan – Feature highlights

- Easy/full submission
- Import of multiple\* references (incl. batch operations)
- Fetch (meta)data from arXiv, PubMed Central, BioMed Central\*, Spires\*
- Controlled vocabulary for journals, persons, languages
- Researcher Portfolio
- Access restrictions to fulltext (private, public, restricted\*)
- Simple and Standard Workflow
- Export in EndNote, BibTeX, xml
- Citation Styles APA, AJP (in pdf, rtf, odt, html, snippet)
- RSS/Atom feeds\*, OAI-PMH\*
- ...



Go

Advanced Search

Organizations

 Include files

HOME MY ITEMS QA WORKSPACE SUBMISSION BASKET (0)

**Easy Submission** Full Submission Import Import multiple items Import Workspace

This item will be imported to the PubMan Test Collection imported.

Home >Choose Submission Method >Multiple Import

# Import multiple items

Import

Import format

BibTeX

Upload file

- BibTeX
- BibTeX
- Endnote
- RIS
- WoS
- eDoc
- eSciDoc

Durchsuchen...

Cancel

Import

# Researcher Portfolio

**PhD Todoroki, Shin-ichi**

**National Institute for Materials Science, Optronic Materials Center**



**Researcher Profile**

**Current Position** Senior Researcher (National Institute for Materials Science)

**Current Position** Faculty Member (Optronic Materials Center)

**Researcher Homepage(s)** [Researcher Blog](#)

**Researcher ID** urn:cone:persons1008

**Research Fields** Computer Sciences: Free, Libre and Open Source Software; Information Science; Digital Libraries|Engineering: Materials Engineering; Ceramic Engineering; Optical Engineering|Informatics|Library Science: Digital Libraries|Physics: Materials Science

**External references**

**WorldCat** [Search for Todoroki, Shin-ichi](#)

**Google Scholar** [Search for Todoroki, Shin-ichi](#)

**Publications**

Todoroki, S. (2009). *Merci, Xiexie, Spasibo*. Published online 2009-05-12. [\[PubMan\]](#)



You are here: [Home](#) → [Research](#) → [Research projects](#) → [Information structure in language acquisition](#) → [Publications](#)

## Information structure in language acquisition - Publications



### Journal article

- Pyykkönen, P., & Järvikivi, J. (in press). Activation and persistence of implicit causality information in spoken language comprehension. *Experimental Psychology*. [more >](#)
- Pyykkönen, P., Matthews, D., & Järvikivi, J. (in press). Three-year-olds are sensitive to semantic prominence during online spoken language comprehension: A visual world study of pronoun resolution. *Language and Cognitive Processes*. [more >](#)
- Dimroth, C. (2008). Age effects on the process of L2 acquisition? Evidence from the acquisition of negation and finiteness in L2 German. *Language Learning*, 58(1), 117-150. [more >](#)
- Narasimhan, B., & Dimroth, C. (2008). Word order and information status in

### Max Planck Institute for Psycholinguistics

**Street address**  
Wundtlaan 1  
6525 XD Nijmegen  
The Netherlands

**Mailing address**  
P.O. Box 310  
6500 AH Nijmegen  
The Netherlands

Phone: +31-24-3521911  
Fax: +31-24-3521213





Anticipating upcoming words in discourse: Evidence from ERPs and reading times – MPI Websi... 

<http://www.mpi.nl/publications/escidoc-60092/@@popup> 

**Journal article** 

**Van Berkum, J. J. A., Brown, C. M., Zwitserlood, P., Kooijman, V., & Hagoort, P. (2005). Anticipating upcoming words in discourse: Evidence from ERPs and reading times. *Journal of Experimental Psychology: Learning, Memory, and Cognition*, 31(3), 443-467.**

The authors examined whether people can use their knowledge of the wider discourse rapidly enough to anticipate specific upcoming words as a sentence is unfolding. In an event-related brain potential (ERP) experiment, subjects heard Dutch stories that supported the prediction of a specific noun. To probe whether this noun was anticipated at a preceding indefinite article, stories were continued with a gender-marked adjective whose suffix mismatched the upcoming noun's syntactic gender. Prediction-inconsistent adjectives elicited a differential ERP effect, which disappeared in a no-discourse control experiment. Furthermore, in self-paced reading, prediction-inconsistent adjectives slowed readers down before the noun. These findings suggest that people can indeed predict upcoming words in fluent discourse and, moreover, that these predicted words can immediately begin to participate in incremental parsing operations.

[Link to source \(DOI\) >](#)  
[Downloadable fulltext >](#)

**Supplementary materials**  
<http://www.mpi.nl/world/persons/private/josber/vanberkumetal-anticipating-jepImc2005-nounclozevalues.sav>  
[vanberkumetal-anticipating-jepImc2005-items.pdf](#)

close window 

 Fertig 0.220 s 0.668 s 296.91 KB 2 req 

APA citation  
(XML  
snippet)

Abstract

Fulltext  
Locators  
(eSciDoc or  
external)



## About



On this website you find the publications of Prof. Dr. Reinhold von Sengbusch. Reinhold Oskar Kurt von Sengbusch (\* 16 February 1898 in Riga; † 13 June 1985 in Hamburg) was a Director at the Max Planck Institut für Kulturpflanzenzüchtung in Hamburg-Volksdorf and one of the most important breeding researchers of the last century. In addition to many of his publications you can find out more about his [favorite topic](#), his [breeding achievements](#) and the [scientific impact](#) he had.

Reinhold von Sengbusch began to publish in 1924 and continued until the nineteen-eighties. Sengbusch alone and together with his colleagues published about 300 scientific articles. His institute produced about 600 publications. Over time the fulltext availability on this site will increase.

This collection is presented by the [Max Planck Digital Library](#). The

### Pages

- » [About](#)
- » [Favorite Topic](#)
- » [Legal](#)
- » [Most Successful Topic](#)
- » [Most Yielding Topic](#)
- » [Scientific Impact](#)
- » [Vita](#)

### Archives

Select Year


### Categories


- » [Breeding](#) (19)
- » [Chemistry](#) (1)
- » [Educational](#) (3)
- » [Fish](#) (14)
  - » [Carps](#) (6)
- » [Kidney stones](#) (17)
- » [Methods](#) (34)
- » [MPI](#) (11)
- » [Mushrooms](#) (37)



## Archive for the 'Strawberries' Category

[« Older Entries](#)

Mellenthin, G., & Sengbusch, R. v. (1978). Der heutige Industriemarkt für Erdbeeren aus der Sicht des Züchters. *Die industrielle Obst- und Gemüseverwertung - Fachorgan d. Bundesverbandes der Obst- und Gemüseverwertungsindustrie e.V. (Sondernummer "Rohware")*, 63(5), 133-133.  [\[pubman\]](#) [\[post\]](#)

Sengbusch, R. v. (1966). Vortrag anlässlich der Einweihung des Sengana Erdbeerhofes. *Einweihung des Sengana Erdbeerhofes*. 1966-05-20 - 1966-05-20.  [\[pubman\]](#) [\[post\]](#)

Hondelmann, W., & Sengbusch, R. v. (1963). Erdbeerzüchtung für die industrielle Verwertung. *Die industrielle Obst- und Gemüseverwertung*, 48, 131-135. [\[pubman\]](#) [\[post\]](#)

Hondelmann, W., & Sengbusch, R. v. (1961). Zur Frühlieferung von Erdbeerpflanzgut. *Die Deutsche Gartenbauwirtschaft*, 9(7), 143-144. [\[pubman\]](#) [\[post\]](#)

Jordan, C., & Sengbusch, R. v. (1957). Veränderungen des Zuckergehaltes von Erdbeeren und Früchten anderer Beerenobstarten nach Lagerung bei tiefen Temperaturen. *Der Züchter*, 27(4), 186-187. [\[pubman\]](#) [\[post\]](#)

Jordan, C., & Sengbusch, R. v. (1956). Ein Beitrag zur Anerkennung von Erdbeerpflanzgut. *Der Züchter (Zeitschrift für theoretische und angewandte Genetik)*, 26(6), 172-174. [\[pubman\]](#) [\[post\]](#)


Sengbusch, R. v. (1954). Erdbeersorte Senga-Sengana. Ein neuer, robuster Massenträger. *Der Obstbau. Organ des württ. Landesobstbauverbandes*, 73(7). [\[pubman\]](#)

You are currently browsing the archives for the Strawberries category.

### Pages

- [» About](#)
- [» Favorite Topic](#)
- [» Legal](#)
- [» Most Successful Topic](#)
- [» Most Yielding Topic](#)
- [» Scientific Impact](#)
- [» Vita](#)

### Archives

Select Year 

### Categories

- [» Breeding \(19\)](#)
- [» Chemistry \(1\)](#)
- [» Educational \(3\)](#)
- [» Fish \(14\)](#)
  - [» Carps \(6\)](#)
- [» Kidney stones \(17\)](#)
- [» Methods \(34\)](#)
- [» MPI \(11\)](#)
- [» Mushrooms \(37\)](#)
- [» Nutrition \(5\)](#)
- [» Pests \(5\)](#)
- [» Plants \(143\)](#)
  - [» Fruit \(20\)](#)
  - [» Strawberries \(16\)](#)
  - [» Hemp \(15\)](#)
  - [» Lupins \(53\)](#)
  - [» Rye \(3\)](#)
  - [» Tobacco \(3\)](#)
  - [» Vegetables \(39\)](#)
  - [» Annonas \(1\)](#)

## PubMan - Upcoming

- Further development for all productive users
  - Collaboration
  - User preferences
  - Duplicate handling across Organisational units
- (Discipline-)specific extensions
  - MPI Evolutionary Anthropology
    - GeoCodes
    - Personalized collections
    - Referencing within text
  - MPI Intellectual Property, MPI Comparative and International Law et al.
    - Integration CMS and external services (SSRN)
    - Discipline-specific documenttypes and reports
  - Verlag Zeitschrift fuer Naturforschung
    - PubMan as Archive for Journal back files

# FACES

## Search Result

You searched in the the whole Faces Collection for (happiness)

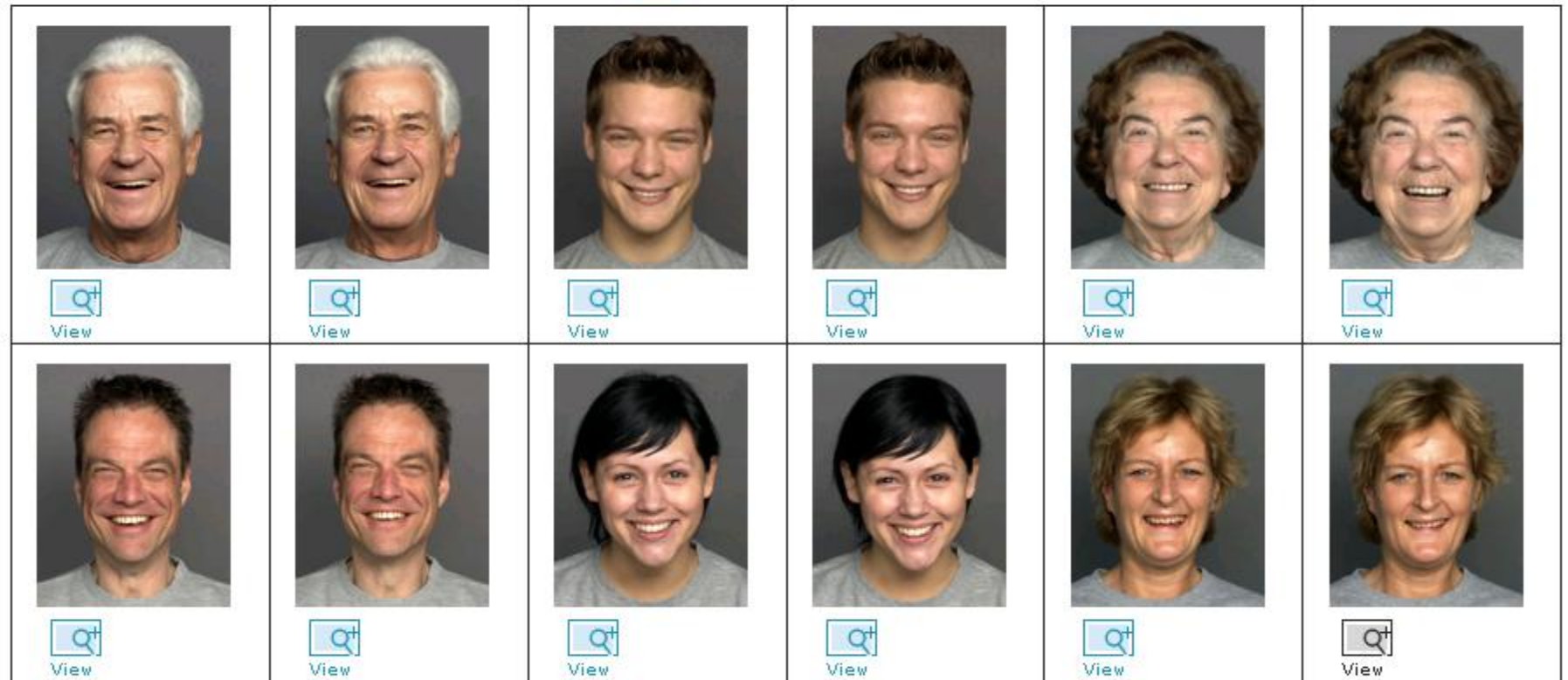
[Revise Search](#)

Show  of 12 hits

◀◀ Previous  Next ▶▶

Go to page  of 1

Sorted by  [i](#)



[Revise Search](#)

Show  of 12 hits

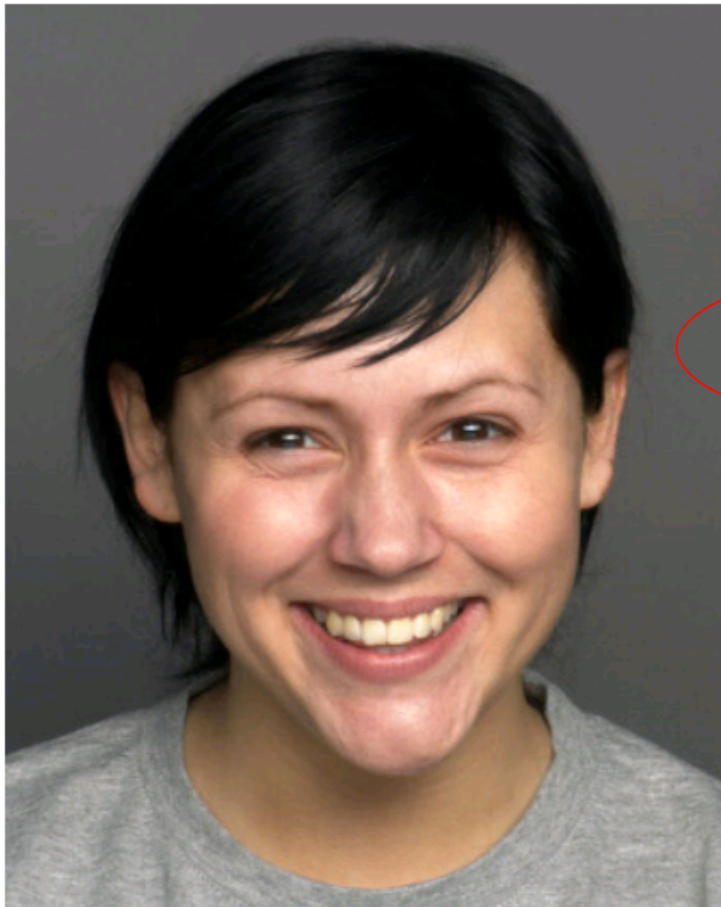
◀◀ Previous  Next ▶▶

Go to page  of 1

## Faces – Feature highlights

- Search/Browsing
  - Multiple sorting
- Detailed view on images and their specifics
- Album (i.e. Subset) Management
  - private and/or public subsets
  - citable URL
- Exports
- Technical Metadata extraction
- Statistics

## Detail View

[Back to result list](#)[◀ Previous](#) [Next ▶](#)[All Pictures of this Person](#)[Attributes !\[\]\(642aa997563f9a325b310230bb5078b7\_img.jpg\)](#) [Toggle between Sets !\[\]\(9bef82f5a53106f2ad06a2de7acf5bcf\_img.jpg\)](#)

Picture Set b

### Person

Person-ID	140
Age	20 ( Young )
Gender	female

### Picture

Emotion	happiness
Picture Set	b

### Technical Metadata

[View Metadata](#)

## Published Albums

Search in album list  [Search](#)

Show  of 2 hits

◀◀ Previous  Next ▶▶

Go to page  of 1

Sorted by  ▼

Name	Number of pictures	Description	Owner	Affiliation	Date published ▼
<a href="#">Expression Research on Middle Aged Men</a>	8	This album contains a selection of middle aged men with different facial expressions.	Kleinfurher, Friederike	Max Planck Digital Library	2009-03-27 at 13:49:12 CET
<a href="#">DEMO FACES Collection</a>	72	This is the FACES Collection of test-faces.mpdl.mpg.de	Saquet, Bastien	MPDL	2009-03-27 at 13:14:17 CET

Show  of 2 hits

◀◀ Previous  Next ▶▶

Go to page  of 1



# Expression Research on Middle Aged Men



published

**Album Url** <http://test-faces.mpg.de/album/escidoc:41047>

**Dates**  
Date Created: 2009-03-27 at 11:39:59 CET  
Date published: 2009-03-27 at 13:49:11 CET

**Author**  
Kleinfurher , Friederike  
Büchner , Kristina  
Max Planck Digital Library  
Max Planck Digital Library

**Description** This album contains a selection of middle aged men with different facial expressions.

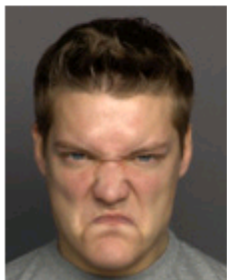
Export Album

Show 12 of 8 hits

Previous 1 Next

Go to page of 1

Sorted by Emotion Person-ID Picture Set Sort



View



View



View



View



View



View

## Faces – Upcoming

- Further development productive users (Version 3.5.)
  - Sharing of Subsets (Albums)
  - Note Pad for Subset
  - Improved Management of Subsets (copy, merge)
  - Integration DigiLib
  - Switch to GUI v2
- Generic re-use of the solution
  - Development of „Generic Metadata Editor component“
  - Allows easy re-use of solution for any kind of research data and its specific metadata profiles
  - First showcase „Diamond cuttings“ (NIMS)

# Browse

14 images to browse

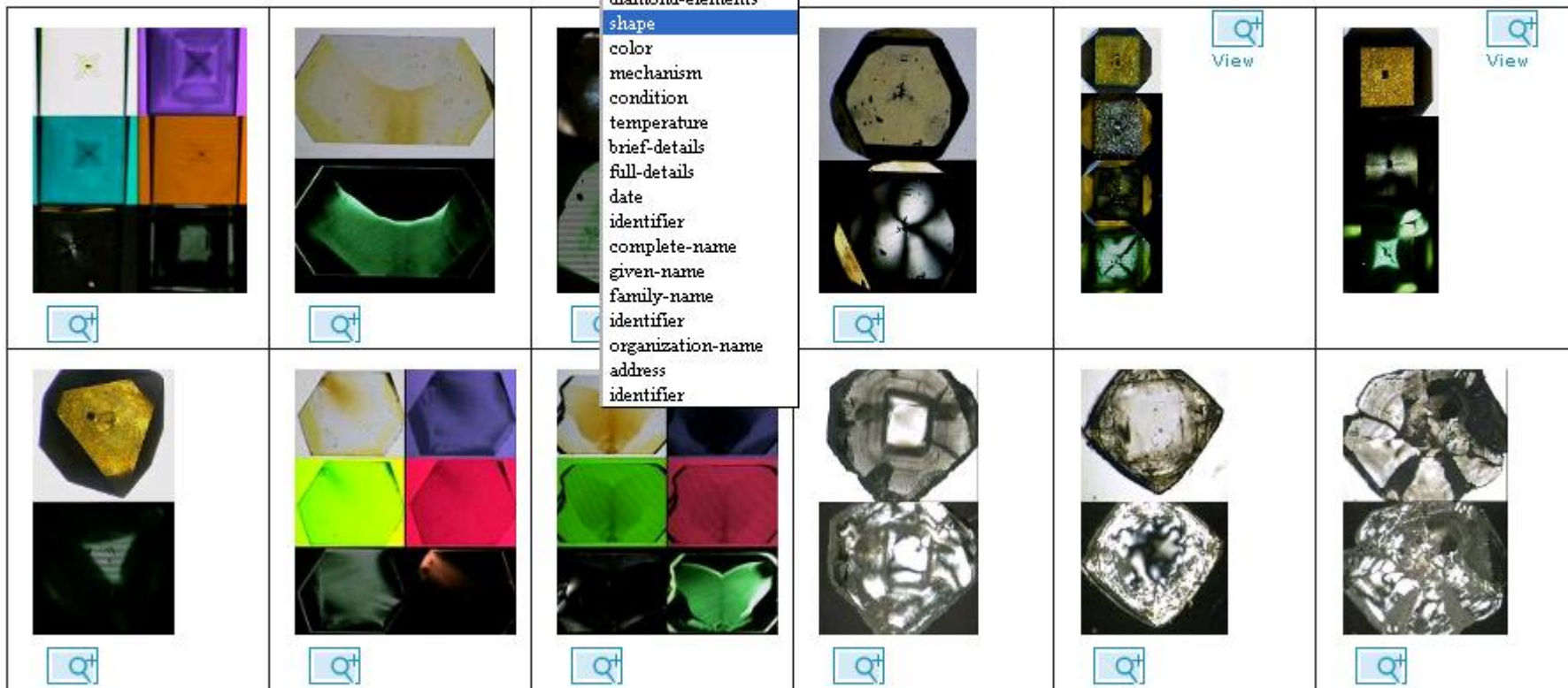
Show  of 14 hits

◀◀ Previous  2 | Next ▶▶

Go to page  of 2

Sorted by

- shape
- diamond-elements
- shape
- color
- mechanism
- condition
- temperature
- brief-details
- full-details
- date
- identifier
- complete-name
- given-name
- family-name
- identifier
- organization-name
- address
- identifier



Show  of 14 hits

◀◀ Previous  2 | Next ▶▶

Go to page  of 2

# VIRR

 Virtueller Raum Reichsrecht  
MPI for European History of Law

[Imprint](#) [He](#)

[HOME](#) > [COLLECTION](#)

VIRR COLLECTION OF  
SCANNED BOOKS

- ▣ **Vollständige Sammlung aller Concluserum, Schreiben und anderer übrigen Verhandlungen des hochpreißlichen Corporis evangelicorum**  
Schauroth, Eberhard Christian Wilhelm von  
Erschienen: 1 (1751) - 3 (1752). -Forts. bildet: Sammlung aller Concluserum, Schreiben und anderer Verhandlungen des hochpreißlichen Corporis evangelicorum vom Jahre 1753 bis 1786 / Nikolaus August Herrich
  - └ [Band 3 1752](#)  
Vom Jahr 1663 bis 1752. Nebst einer [!] chronolog. Verzeichniß und vollständigen Reg.
- ▣ Oertel, Christian Gottfried  
**Vollständiges corpus gravaminum evangelicorum**  
Erschienen: 1 (1771) - [8] (1775). -Bd. [8] im Verl. Montag, Regensburg, erschienen
  - └ [Band 7 1775](#)  
Vollständiges corpus gravaminum evangelicorum
  - └ [Band \[8\] 1775](#)  
Vollständiges corpus gravaminum evangelicorum

## ViRR – Feature Highlights

- Browsing (multi-)volumes
- Detailed viewing
- METS Export to and viewing in DFG-Viewer
- Online Editor Workspace (Version 2.1./End of June)
  - Bibliographic metadata
  - Pagination
    - Free text, Arabic, Roman
    - Auto paginate
  - Table of contents
    - Add/ Delete/Move structural element
    - Assign pages to structural element
    - Remove all pages of a structural element
    - Edit metadata of a structural element

	<p><b>[Schaurosaroth, Eberhard Christian Wilhelm von (edt)]</b> Vollständige Sammlung Aller Conclusorum, Schreiben Und anderer übrigen Verhandlungen Des Hochpreißlichen Corporis Evangelicorum nnnnnn - Regensburg : Neubauer , 1751-1752</p>	<a href="#">Edit metadata</a>
	<p><b>Vol. 1 - 1751</b></p> <p>last modified Thu Apr 30 09:59:59 CEST 2009</p> <p>published Wed Apr 22 10:14:47 CEST 2009</p> <p>status pending</p>	<a href="#">Edit table of contents</a> <a href="#">Release TOC</a>
	<p><b>Vol. 2 - 1751</b></p> <p>last modified Thu Apr 30 15:37:10 CEST 2009</p> <p>published Thu Apr 30 15:37:09 CEST 2009</p> <p>status released</p>	<a href="#">Edit table of contents</a>
	<p><b>Vol. 3: Vom Jahr 1663 bis 1752 : Nebst einer[!] Chronologischen Verzeichniß und vollständigen Register über sämtliche Drey Theile - 1752</b></p> <p>last modified Mon May 04 09:50:06 CEST 2009</p> <p>published Mon May 04 09:50:01 CEST 2009</p> <p>status released</p>	<a href="#">Edit table of contents</a>
	<p><b>Zappa, Christian Gottfried</b> Vollständiges Corpus Gravaminum Evangelicorum - Regensburgsdfsdf : Montagdfgsdf , 1775-1775</p>	<a href="#">Edit metadata</a>

# Vollständige Sammlung Aller Concluserum, Schreiben Und anderer übrigen Verhandlungen Des Hochpreißlichen Corporis Evangelicorum nnnnnn. Vol. 1, 1751

Save & Release Save

Hide scan Hide pagination Hide structure

Go to Scan 1 / I of 41

Format Arabic Start 1 Filter 1-50

Structure by Chapter

markiertes Element/Seite

Level 1-1

Show:  Pages  Titles

<input type="checkbox"/>	1:e0001	I	
<input type="checkbox"/>	2:e0002	II	
<input type="checkbox"/>	3:v0001	III	
<input type="checkbox"/>	4:v0002	IV	
<input type="checkbox"/>	5:v0003	V	
<input type="checkbox"/>	6:v0004	VI	
<input type="checkbox"/>	7:d0001	VII	
<input type="checkbox"/>	8:d0002	VIII	
<input type="checkbox"/>	9:d0003	IX	
<input type="checkbox"/>	10:d0004	X	
<input type="checkbox"/>	11:d0005	XI	
<input type="checkbox"/>	12:d0006	XII	
<input type="checkbox"/>	13:d0007	XIII	
<input type="checkbox"/>	14:d0008	XIV	
<input type="checkbox"/>	15:d0009	XV	
<input type="checkbox"/>	16:d0010	XVI	
<input type="checkbox"/>	17:d0011	XVII	
<input type="checkbox"/>	18:d0012	XVIII	
<input type="checkbox"/>	19:d0013	XIX	
<input type="checkbox"/>	20:d0014	XX	
<input type="checkbox"/>	21:d0015	XXI	
<input type="checkbox"/>	22:d0016	XXII	
<input type="checkbox"/>	23:d0017	XXIII	
<input type="checkbox"/>	24:d0018	XXIV	
<input type="checkbox"/>	25:d0019	XXV	
<input type="checkbox"/>	26:d0020	XXVI	
<input type="checkbox"/>	27:d0021	XXVII	

**Band 1**

- Index (Register) : noindex
- Chapter: noc (IV)
  - 4: v0002 (IV)
  - 5: v0003 (V)
  - 8: d0002 (VIII)
  - 9: d0003 (IX)
- Chapter (2): Test Kapitel 2 (XV)
  - 15: d0009 (XV)
  - 16: d0010 (XVI)
  - 17: d0011 (XVII)
  - 18: d0012 (XVIII)
  - 19: d0013 (XIX)
  - 20: d0014 (XX)
  - 21: d0015 (XXI)
- Chapter (3): Test Kapitel 3 (XI)
  - 11: d0005 (XI)

Hide Metadata Remove Assigned Pages

**Signature** Dt 9 Bg 18 Q [1]

**Edt.JAsc.** Schaurosaroth, Eberhard  
Christian Wilhelm von

**Title** Vollständige Sammlung  
Aller Concluserum,  
Schreiben Und anderer  
übrigen Verhandlungen

## ViRR - Upcoming

- Further development productive users
  - Improvements Online-Editor Workspace
  - Search, Export
  - Complete ingestion
  - Switch to GUI v2
- (Discipline-)specific extensions for MPI European History of Law, MPI Human Development, KHI Florenz
  - Improved ingest
  - Browse, View, Edit for heterogeneous content (digitized journals, books)
  - Collaboration Scenarios based on encoded fulltexts
  - Complementary, non-technical Service for Digitization activities



## More Information

- escidoc.org => Solutions =>
  - PubMan
  - Faces
  - VIRR
- <http://colab.mpdl.mpg.de/> => eSciDoc
- eSciDoc Days 2009 – Day 2 =>
  - Track 3 - “Working with eSciDoc solutions”
    - PubMan (starting 10:00)
    - FACES (starting 14:00)
    - VIRR
    - CoNE Service

# Thank you

Ulla Tschida  
tschida@mpdl.mpg.de

<http://escidoc.org>  
[http://colab.mpdl.mpg.de/mediawiki/ESciDoc\\_Solutions\\_summary](http://colab.mpdl.mpg.de/mediawiki/ESciDoc_Solutions_summary)

<http://pubman.mpdl.mpg.de>  
<http://faces.mpdl.mpg.de>  
<http://virr.mpdl.mpg.de>