

<http://colab.mpd.l.mpg.de/mediawiki/Faces>

## Re-Use of FACES

The FACES software allows to maintain collections of pictures which are usually enriched by attributes or metadata.

FACES provides a basic user management to control the access to the pictures, to enable the creation of subsets of the collection, to support the sharing of such subsets with selected users and to afford the publishing of subsets by a simple workflow.

## Partner

**Max Planck Institute for Human Development**  
Center for Lifespan Psychology · Berlin, Germany

The project is coordinated by *Ursula Flitner*, head of the institute's library.

The content of FACES was collected between 2005 and 2007 by *Ulman Lindenberger*, *Natalie Ebner* and *Michaela Riediger*.

The content model of the FACES software design was influenced by the predecessor database developed at the institute by *Matthias Bindernagel* and *Natalie Ebner*.

## Contact

*Kristina Büchner*  
Service Management

Max Planck Digital Library  
[buechner@mpdl.mpg.de](mailto:buechner@mpdl.mpg.de)  
phone +49 (0)89 38602-205

## eSciDoc Solutions in Process

In addition to **FACES**, the following solutions are currently under development:

### Publication Management (PubMan)

An institutional repository designed to address the management, the dissemination and the long-term archiving of publication data (formal/informal publications, grey literature and supplementary material) of a research organisation.

### Virtueller Raum Reichsrecht (ViRR)

A published digital collection and a cooperative working environment for various artefacts of the legislation in the period of the German Holy Empire. The compilation will be indexed, structured via METS (Metadata Encoding and Transmission Standard), transcribed and linked to further relevant scientific literature.

## Contact

*Ulla Tschida*  
Head of Service Management

Max Planck Digital Library  
[tschida@mpdl.mpg.de](mailto:tschida@mpdl.mpg.de)  
phone +49 (0)89 38602-222



MAX-PLANCK-GESELLSCHAFT

**Max Planck Digital Library**  
Amalienstrasse 33  
80799 Munich, Germany  
[www.mpd.l.mpg.de](http://www.mpd.l.mpg.de)

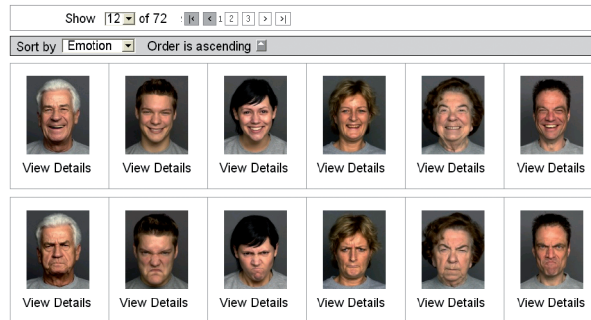


MAX PLANCK  
digital library



## What is FACES?

*A lifespan digital collection of adult emotional facial stimuli based on the infrastructure of eSciDoc*



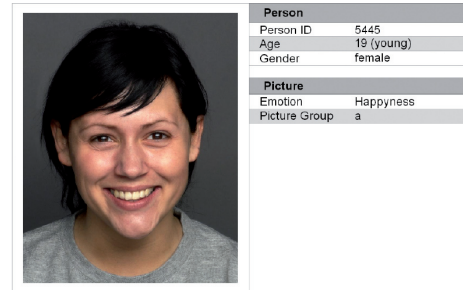
FACES is a set of images of naturalistic faces of 171 women and men displaying each of 6 facial expressions: neutrality, sadness, disgust, fear, anger and happiness. The speciality of this collection is that it comprises pictures of individuals of three different age groups: young (n=58), middle-aged (n=56) and older (n=57).

## Functionalities of FACES

- Picture search based on the available attributes (currently ID, age group, gender, facial expression and picture group)

Person	Picture
<b>Age</b> <input type="checkbox"/> young: 20-30 <input type="checkbox"/> old: 60-70 <input type="checkbox"/> middle: 40-50	<b>Emotion</b> <input type="checkbox"/> anger <input type="checkbox"/> happiness <input type="checkbox"/> disgust <input type="checkbox"/> neutrality <input type="checkbox"/> fear <input type="checkbox"/> sadness
<b>Age Range</b> from <input type="text"/> up to <input type="text"/>	<b>Picture Set</b> <input type="checkbox"/> picture group a <input type="checkbox"/> picture group b
<b>Gender</b> <input type="checkbox"/> male <input type="checkbox"/> female	
<b>ID</b> <input type="text"/>	

- Detailed view of single pictures (and navigation within the pictures) and their attributes



- Creation and export of public and private subsets for the analysis of special research questions
- Management of an unlimited quantity of attributes per picture (e.g. adding new attributes based on the output of rating studies)
- User and rights management to realize different access rights

## Benefits for the Researcher

- Simple access from everywhere to the research materials via internet
- Long term archiving of research materials
- Persistent referencing of the collection and its subsets within publications
- Improved visibility of the institute and its research data
- Re-use of the primary data for complementary studies (e.g. rating studies) and other interdisciplinary research questions

## eSciDoc

eSciDoc is a joint project between the **Max Planck Society** and the **Fachinformationszentrum (FIZ) Karlsruhe**, funded by the **Bundesministerium für Bildung und Forschung (BMBF)** from 2004-2009.

The aim of the project is the web-based support of scientific communication and publication in research organizations. This will be realized through the development of a re-usable generic **infrastructure** and additionally various discipline-specific **solutions**.

## eSciDoc Solutions

Solutions like FACES are eScience applications based on the eSciDoc infrastructure.

- Solutions follow a user-centered development by close cooperation with pilots and partners from the Max Planck institutes
- Integrating different services to support discipline-specific usage scenarios, they benefit of the service-oriented architecture used by the eSciDoc infrastructure
- They are developed to satisfy the needs of particular institutes, but they also strengthen the general eSciDoc infrastructure (especially in the current stage of development)
- Workflows and graphical user interfaces (e.g. local branding) are customizable for optimal re-use