

The Ripple Effect: The Benefits of Focused Resource Initiatives

Susan Swogger, MLIS

Collections Development Librarian
sswogger@email.unc.edu

Barbara Rothen Renner, PhD

Library Services Evaluation Specialist and Liaison, Allied Health Sciences
brrenner@email.unc.edu

Health Sciences Library
University of North Carolina at Chapel Hill

MAC/MLA 2008 Annual Meeting
October 2008, Morgantown, WV

Objective:

**To build relationships with
&
provide improved service to
small academic divisions**

by creating highly focused resource pages

Department of Allied Health Sciences

School of Medicine (1 of 27 Departments)

- **7 Divisions :**

- **Clinical Laboratory Medicine**
- **Cytotechnology**
- **Occupational Science**
- **Physical Therapy**
- **Radiologic Science**
- **Rehabilitation Counseling & Psychology**
- **Speech & Hearing Sciences**

- **3 Centers :**

- **Center for Literacy & Disability Studies**
- **Center for Human Movement Science**
- **Distance Education Information Center**

Rehabilitation Counseling & Psychology: A Small, Unique Division

Division of Rehabilitation Counseling & Psychology in the Department of Allied Health Sciences at ...

File Edit View History Delicious Bookmarks Tools Help

http://www.med.unc.edu/ahs/rcp/welcome.htm

Division of Rehabilitation Co...

AHS

The Division of Rehabilitation Counseling and Psychology

Faculty and Staff






Welcome

Visit us at our offices in Bondurant Hall S
[Click here for directions](#)

What is Rehabilitation Counseling?
Rehabilitation Counseling is a profession that helps individuals with psychiatric, developmental, cognitive, and physical disabilities reach their maximum level of independence, integrate work in accordance with each individual's perception of quality of life.

A Rehabilitation Counselor is a highly trained professional who helps individuals with disability and assist the psychological, social, and vocational function in perception of quality of life.

Faculty and Staff

- 
Charles Bernacchio, EdD, CRC
Assistant Research Professor
Director, Rehabilitation Counseling & Psychology
(919)843-4730
cbernacchio@med.unc.edu
- 
Eileen Burkner, PhD, CRC
Associate Professor
Rehabilitation Counseling & Psychology
and Adjunct Associate Professor
Department of Psychiatry
(919)966-9125
eburker@med.unc.edu
- 
Donna Falvo, PhD, CRC
Clinical Professor
Rehabilitation Counseling & Psychology
(919)966-5980
donna_falvo@med.unc.edu
- 
Kelly Kazukauskas, PhD, CRC, CVE
Assistant Research Professor
Rehabilitation Counseling & Psychology
(919)843-5138
kellyk@med.unc.edu
- 
Greg Olley, PhD
Clinical Professor
The Clinical Center for the Study of Development & Learning
(919)966-4613
greg.olley@cdl.unc.edu

Stopped

- 4 Full-time Faculty
- 1 Part-time Faculty
- 1 Staff Member
- 27 MS Students
 - 14 New Students
Fall, 2008

2007 Collection Development Survey

Chair/Associate Dean & Division Heads recommended...

- Key materials for purchase
- Key web sites
- Top 5 journals
- Online book collections or titles

Identified Need

A specialized, highly-focused tool to address an unusual mix of needs:

- University has many relevant but widely dispersed resources
- Time-consuming training was necessary for broad range of more generic resource pages
- Students and faculty would benefit from easier access to electronic resources

Meeting between Liaison & Division Head

- Introduce potential tool
- View existing prototype
- Discuss focus, categories, & specific resources
- Identify Library and Division collaborators

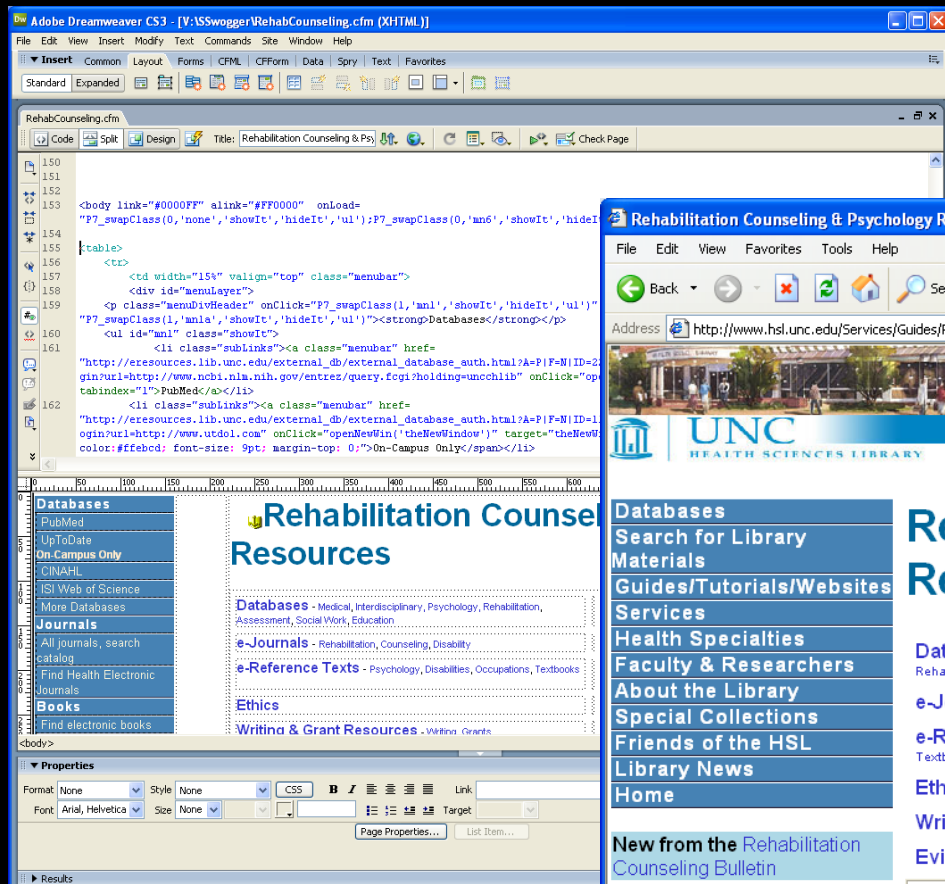
Anticipated Broader Benefits

- Gain more knowledge of a unique division's other needs
- Build warmer relationship with entire Department of Allied Health
- Demonstrate willingness to work with the smallest divisions as extensively as the largest
 - Other small *or* large divisions with unusual needs may more readily approach the library with requests

Development Process

- Meetings between Liaison and Collections Development Librarian during draft development
 - Email and discussion with interested faculty
- Sharing of draft at division faculty meeting
 - Spark excitement and sense of ownership among all faculty
- Revision of draft based on feedback
 - Ensure site meets division needs, not preconceived ideas

Design of Tightly Focused Resource Page



Develop in Dreamweaver



Produce for Firefox, Internet Explorer, & Safari

Categories of Included Resources

•Library Resources

- Core Databases
- Core Electronic Journals
- Core Electronic Reference Books
- Help & Library Assistance

•Academic Resources

- Ethics Resources
- Writing & Grant Resources
- Evidence-Based Medicine Resources

•Professional Resources

- Professional Organizations
- Licensing Bodies
- Government Agencies & Organizations

Menu of Resource Categories



UNC HEALTH SCIENCES LIBRARY

Need Help? Ask a Librarian

Rehabilitation Counseling & Psychology Resources

Databases - Medical, Interdisciplinary, Psychology, Rehabilitation, Assessment, Social Work, Education

e-Journals - Rehabilitation, Counseling, Disability

e-Reference Texts - Psychology, Disabilities, Occupations, Textbooks

Ethics

Writing & Grant Resources - Writing, Grants

Evidence-Based Medicine

Professional Associations - United States, North Carolina

Licensing Bodies

Government & Organization Sites - United States, North Carolina

Recommend a Title

More Help

Core Databases

Major Medical Databases

- PubMed
- CINAHL
- Jablonski's Multiple Congenital

Core Electronic Journals

Rehabilitation Counseling e-Journals

- Journal of Disability Policy Studies
- Journal of Rehabilitation
- Journal of Vocational Rehabilitation

RSS Feed of Two Core Journals' TOC, Chosen by Faculty

Chosen Resources, Chosen by Faculty & Librarians

Additional Needs Identified

- **New Page: Psychiatry and Mental Health**
 - No broad subject resource page existed
 - Area is relevant to all Departments & Divisions
- **New Page: Autism and Related Disorders**
 - Multidisciplinary
 - To support entire Department plus other programs & research centers across University
- **Replacement of All Older Format Pages**
 - Speech and Hearing Sciences
 - Social Work
 - Physical Therapy

Requests from Other Divisions

■ Other Allied Health Divisions

■ Speech and Hearing Sciences

Out-dated page replaced with 2 pages after discussion with faculty

- Speech-Language Pathology
- Hearing and Audiology

■ Physical Therapy

- Existing, out-dated page to be replaced
- Adding Multiple Sclerosis page for new fellowship training track

■ Units from other Schools to receive special pages

- Hydrology, Neurology, etc.

Additional Outcomes

- Program knows the Library respects & values it
(despite small size and newness of program)
- Faculty overcame reluctance to request “special” resources/services, allowing us to learn about other needs
- Requests for Liaison consultations increased, as did student referrals
- Collections Development Librarian made contacts useful for further collection development work
- Division shared experience and results with other faculty, resulting in additional requests & growth in relationships

Additional Observations

- Partnering between Collections Development (CD) Librarian & Liaison important
(especially where no subject bibliographers exist)
- CD Librarian can serve as important link between User Services and Technical Services
- Involving CD Librarian directly in collaboration allows CD Librarian to form direct relationships with faculty
- Collaboration allows CD Librarian to learn local context, nuances of program, and specialized (sometimes local) vocabulary

Conclusion

- Investment of time and effort to meet the needs of a tiny group of users
 - Can have a disproportionately large return for the Library
 - Can reach beyond the original small user audience and initial project

The Ripple Effect: The Benefits of Focused Resource Initiatives

Specialized Health Resources pages:

<http://www.hsl.unc.edu/Services/Guides/hlthresources.cfm>

Susan Swogger, MLIS

Collections Development Librarian

sswogger@email.unc.edu

919-966-0777

Barbara Rothen Renner, PhD

Library Services Evaluation Specialist and Liaison, Allied Health Sciences

brrenner@email.unc.edu

919-843-7249

Health Sciences Library

University of North Carolina at Chapel Hill