

Azoria 2004
B700 Final Trench Report
RQC

B700 is a room ~2.5m by 4.5m, bounded by wall **B711** to north, wall **B703** to east, wall **B706** to south, and wall **B717** to west. **B700** is an Archaic storeroom with an Archaic surface covered with pithos scatters and plakas (excavated in 2003). There is a stone bench abutting wall **B706** in the central/southern portion of the trench. **B700** is bounded to the south by trench **B1200** and to north by trench **B1500**, both Archaic storerooms excavated in 2003. There is a doorway in the northeastern corner of **B700** leading into **B1500**.

Excavation in **B700** this year was conducted to explore the area underneath the Archaic floor surface to determine whether final Neolithic levels similar to those excavated in trench **B1200** in 2003 continue underneath **B700**. Excavation was conducted from 1 June 04 to 18 June 04. The trench supervisor was Rob Cuthrell. Trench assistants were Clara Scarry, Carolyn Edey, Cait Johnson, and Rachel McCleery. The workman was Nikoli Speliarotis.

Brief Loci & Pail Descriptions:

First Archaic surface & packing	B724.1
Second Archaic surface & packing	B724.2-4
Transitional Archaic -> Final Neolithic	B725.1-4
Final Neolithic level	B726.1-4
Final Neolithic hearth	B727.1-5
Final Neolithic surface	B728.1

Excavation in **B700** this year began in the area bounded by walls **B717** and **B711**, south to the northern edge of the stone bench, and east to a line of plakas resting on the first Archaic surface (~2.4m east of wall **B717**). Excavation later extended into area directly west of stone bench to wall **B717**.

The first pass over the first Archaic floor and packing (pail **B724.1**) revealed a second Archaic floor surface underneath, surface composed of regular grey clay embedded with small pebbles/carbon flecks, second Archaic surface looks much like the first. A possible small piece of iron was recovered from the sieve with this pail.

Pails **B724.2-4** removed the second Archaic surface and packing underneath to reach transitional Archaic/FN level at bottom. Soil removed in these pails gradually transitions from grey to reddish/grey clay. A few large stones were exposed with this pail, later removed. Two fragments of a final Neolithic figurine were recovered during excavation in pail **B724.3**. One figurine fragment appears to be the head of a bird, the other is a body piece of the same bird-figurine. Precise location of figurine fragments not recorded, both were recovered from pottery later.

Pails **B725.1-4** removed the transitional Archaic/FN material to reach the FN level at bottom. The tops of central and southern stone platforms were exposed with these pails. The rest of the grayish Archaic floor packing was removed with this locus.

Pails **B726.1-4** removed soil from final Neolithic level underneath Archaic floor packing. Central and southern stone platforms were defined with these pails. Central stone platform is roughly rectangular, oriented NW-SE. Feature is ~100cm NW-SE and ~75cm NE-SW. Southern stone concentration also roughly rectangular with a linear accumulation of four larger stones running roughly E-W on northern end. Feature is ~90cm E-W by ~70cm N-S. A final Neolithic hearth in the southeastern corner of the locus area was exposed, burnt bone and flecks of carbon mixed with FN pottery were recovered from area with this locus. A linear accumulation of stones (possibly a feature) borders the final Neolithic hearth to the west, accumulation runs roughly N-S and is ~65cm long. A final Neolithic surface was exposed at the bottom of this locus in the area between central and southern stone platforms and to the west of the central stone platform. Surface is packed, regular red clay embedded with small pebbles a few carbon flecks. One chipped stone flake was recovered from sieve in pail **B726.1**, precise location unknown. The top of **B726.1** is at the same level as the bottom of walls B706 and B711, all further excavation was below the level of these walls. The bottom of wall B717 was reached midway through **B716.1**.

Pails **B727.1-5** excavated the final Neolithic hearth in the southeastern corner of the locus area. A concentration of disarticulated porcine remains was exposed in and around an in situ final Neolithic pot base resting in the hearth area, pot base was ~15 cm in diameter. Chipped stone flakes were recovered along with ash, FN pottery from several vessels, burnt bone and pottery. Hearth was ~25cm in diameter. Porcine remains and in situ FN vessel were removed, soil underneath was relatively sterile and ashy. Three stone flakes were recovered in this locus, one each from pails **B727.1**, **B727.2**, and **B727.5**. The stone flake from **B727.5** was recovered ~20cm north of FN vessel base, the rest were recovered from the sieve.

Pail **B728.1** removed the final Neolithic surface in the area between central and southern stone concentrations and to west of central stone concentration. Soil removed was dark red and sterile, trench was closed after this pass.

Discussion:

Excavation in B700 this year revealed what is probably an exterior final Neolithic habitation surface in the area between and to the west of the two stone platforms. There were few finds from this area, pottery was mostly FN with some LMIIC. The final Neolithic hearth with the linear stone feature just to west of it probably represents the interior of a structure against which the stone platforms were built. The linear stone accumulation to west of hearth may represent all that remains of the wall of this structure. Another possibility is that the linear accumulation of stones west of hearth represents the top of an FN wall that runs underneath Archaic wall B706 to join with the northern final Neolithic wall running east-west in trench B1200. It is unclear whether the stone platforms have any relationship with the final Neolithic walls in B1200.

Finds from FN level in exterior space were sparse as a whole, only one chipped stone flake and the FN figurine fragments were recovered from this area, along with FN pottery. This is not surprising if the area is exterior. FN deposit in and around hearth was much richer and more indicative of interior habitation deposit, though the area excavated was very small. Three chipped stone flakes, the FN cookpot with porcine remains, and a greater density of FN pottery in general was recovered from this area. Further excavation

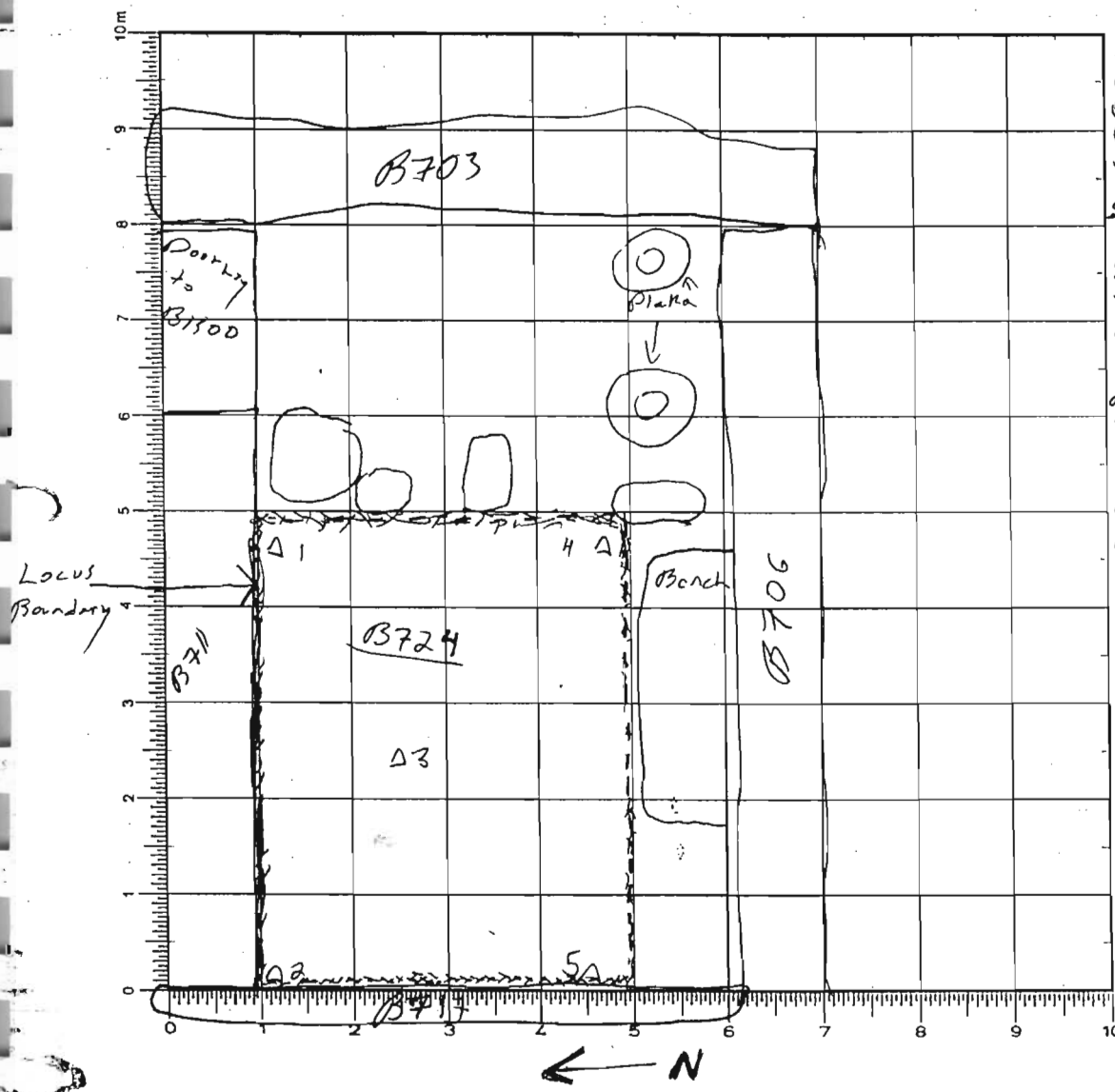
in area thought to be interior is not possible due to presence of significant Archaic features on uppermost floor surface of room.

Year 04 Trench/Locus ~~B724~~ B724 Excavator RCC

Elevations

Benchmark used: R11
 Reading on Benchmark: 355.86
 H.I.: 1.293

- $R11 + HI = 357.153$
 ① 3.150
 ② 3.152
 ③ 3.129
 ④ 3.102
 ⑤ 3.164
 Elevations - Top B724.1
 1) 354.003
 2) 354.001
 3) 354.024
 4) 354.031
 5) 353.989
 Bottom B724.1, sec p. 3
 6) 353.979
 7) 353.972
 8) 353.995
 9) 353.996
 10) 353.953



Not to scale
 SKETCH ~~175~~

DEFINITION/DESCRIPTION of LOCUS (explain why you changed locus numbers):

Today's date: ~~June 04~~ Locus above: B722

Locus parameters: Surface of Archaic floor, surface exposed since 2003 season. Bounded by wall B711, line of flat stones on west, stone bench on South.

Verbal description: B724 is the Archaic floor surface exposed in 2003. B724.1 is a shallow pass ~5cm exposing floor, packing & removing it. Floor surface is fine grey clay, very little pottery, few rocks embedded in floor. Surface underneath is hard, packed grey clay with carbon specks embedded. All soil removed screened 1/4", standard soil sample taken, photographed.

Locus Interpretative Comments (What do you think this is? DATE your comments, continue on additional pages if necessary): 1 June 04: Pail B724.1 completed, ~5cm of soil removed, grey clay fill with carbon flecks. Possible surface underneath, Bottom of B724.1 photographed.

Year 04 Trench/Locus: B724 Excavator RQC

Locus/Pottery Pail Number	Weight of Sherds	Number of Sherds	Chronology & Comments
B724.1	.100 kg	26	ARCHAIC
B724.2	.035 kg	18	ARCHAIC
B724.3	.250 kg	48	FN, ARCHAIC
B724.4	.180 kg	28	FN, LATE C

OBJECTS

Object Number	Associated Pottery Pail	Identification (material/form)	Location	Elevation	Catalogue Number
1	B724.1	Metal Object?	Sieve		
2	B724.2	Stone Breadcrumbs	See diagram p4		
3	B724.3	INCISED STERILE	PAEL AREA		
4	B724.3	FN FIGURINE FRAGMENT	PAEL AREA		
5	B724.3	FN FIGURINE HEAD	PAEL AREA		

ADDITIONAL COLLECTED MATERIAL

Locus/Pottery Pail Number	Bones Bag	Shell	Carbon	Pumice	Soil Sample	Other (specify)
B724.1				1		
B724.1	2 std 1/4"					
B724.2				1	1 std	
B724.2				1		
B724.2			1			
B724.2					1 Int #1	
B724.2	2 std 1/4"					
B724.3	2 1/4"					
B724.4	2 1/4" std			1		

Year 04

Trench/Locus B724

Excavator RQC

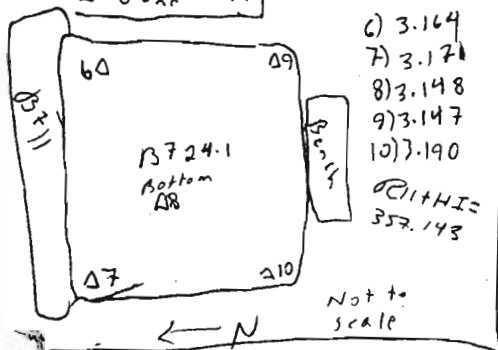
DESCRIPTION of PROGRESS of EXCAVATION [date each entry and identify associated pottery pail(s)]:

1 June 04:

B724 is an Archaic floor, area of the locus bounded by a line of flat stones (possibly pithos bases) to the east, a stone bench to the south, wall B717 to the west, and wall B711 to the north. The aim of excavation here is to explore the strata underneath B700's Archaic floor to determine whether Minoan and Final Neolithic occupation surfaces are present, as in adjoining trench B1200. Excavation will follow the boundaries of B724 to test whether these earlier levels are present. Limiting the excavation thus avoids disturbing the stone bench and pithos bases present in the trench atop the Archaic floor.

One pass of ~5cm was made over the surface of B724 today (pail B724.1). Matrix consists of fine, hard-packed grey clay with several inclusions of fist-sized rocks and pebbles. Few potsherds and small amounts of bone were recovered, all soil removed was screened 1/4" and a standard soil sample was taken. The bottom of B724.1 was swept and photographed. One iron (?) object was recovered from the screen and recorded as Object #1. Excavation will continue tomorrow with another pass over the exposed surface of B724. Elevations 1-5 are starting elevations of the surface of B724.1. B724.1 is thought to be a compacted Archaic floor. SEE SKETCH P. 4

2 June 04:



We are beginning another pass of ~5cm over the entire area of B724. Matrix is hard packed grey clay coming down on hardpacked red clay possibly a neolithic surface. Hardpacked grey fill is thought to be compressed Archaic surface layers; floor packing. Possibility: During Archaic, surface scraped down to top of final Neolithic, grey clay floor packed above. Object #2 is a ~3cm diameter round stone burnisher, see diagram p4. Carbon chunk approx 3cm diameter removed, see diagram p4.

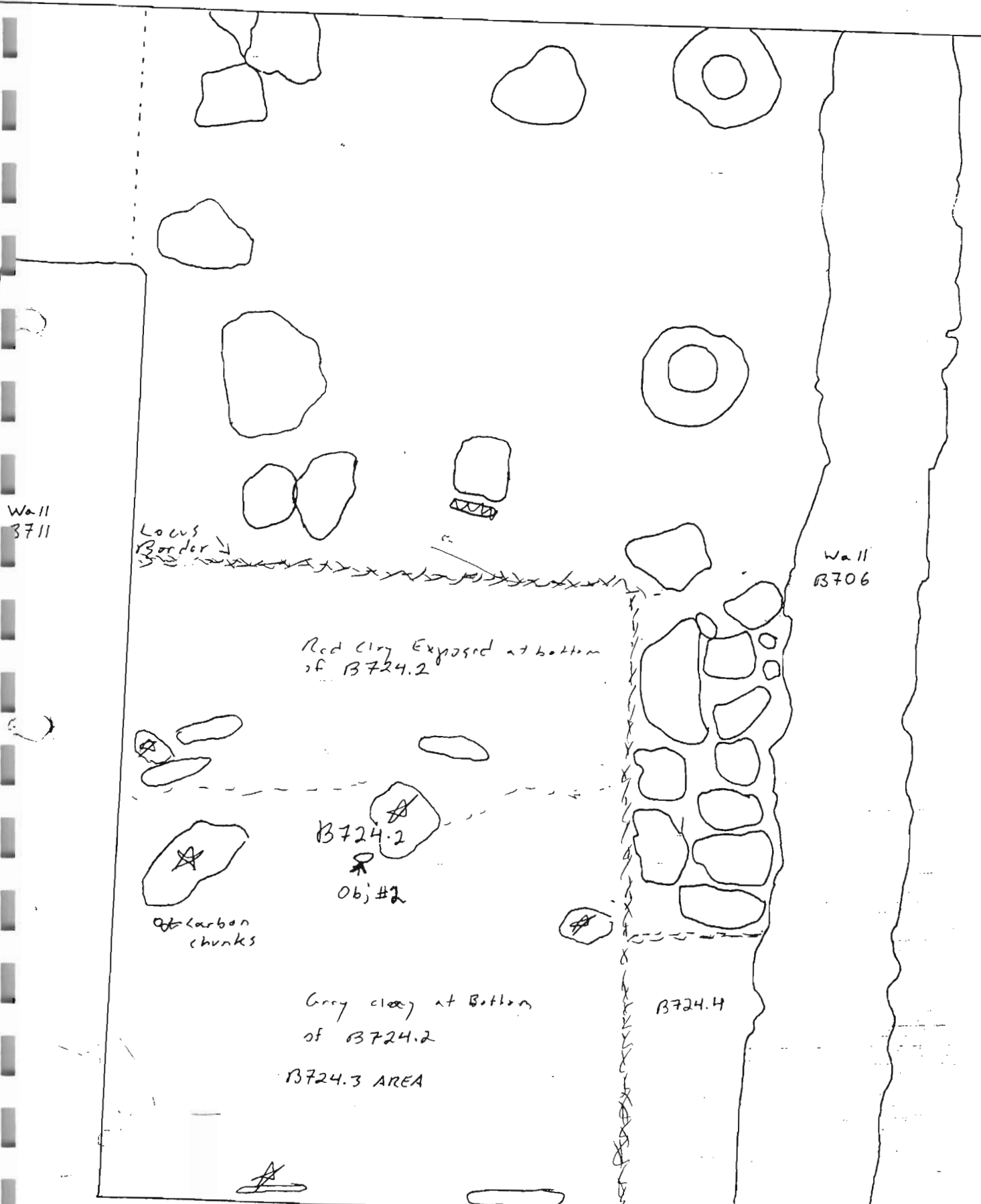
Depth of grey clay deepens to 7-10 cm in NW corner of B724.2. Inclusions of pebbles, carbon flecks in grey clay. First-size & larger rocks embedded in red clay below grey Archaic floor surface. This pass is thought to be removing an Archaic floor surface and packing earlier than B724.1's Archaic floor. An intensive soil sample (#1) was taken of soil removed from B724.2, 10L. Some grey Archaic surface packing remains in western half of B724. B724.2 completed, trench will be thoroughly swept and a final pass of B724 will be made to remove remaining grey clay until red clay underneath is exposed.

B724.3 is a final pass over B724 to remove the remaining areas of grey clay in the western portion of the trench (as indicated on diagram p4). Pebble inclusions in matrix, grey clay becomes deeper (~10cm) in western portion of B724. Stones marked with a ~~A~~ on p4 were pulled, resting on Archaic surface, or embedded in Archaic floor packing. As we continue to remove grey Archaic floor packing, bone are coming down on more fist-size and larger rocks embedded in the surface of the red clay underneath. After all grey was removed, surface of red clay was swept and photographed. Because so many fist-size & larger rocks are embedded in the red clay, the exposed portion is not thought to be a surface. The red clay will be excavated as locus B725.

Year 04 Trench/Locus B724 Excavator RQC

DESCRIPTION of PROGRESS of EXCAVATION [date each entry and identify associated pottery pail(s)]:

Wall B703



Wall B711

Wall B706

Locus Border

Red clay Exposed at bottom of B724.2

Carbon chunks

B724.2 Obj #2

Grey clay at Bottom of B724.2

B724.3 AREA

B724.4

* = pulled stone

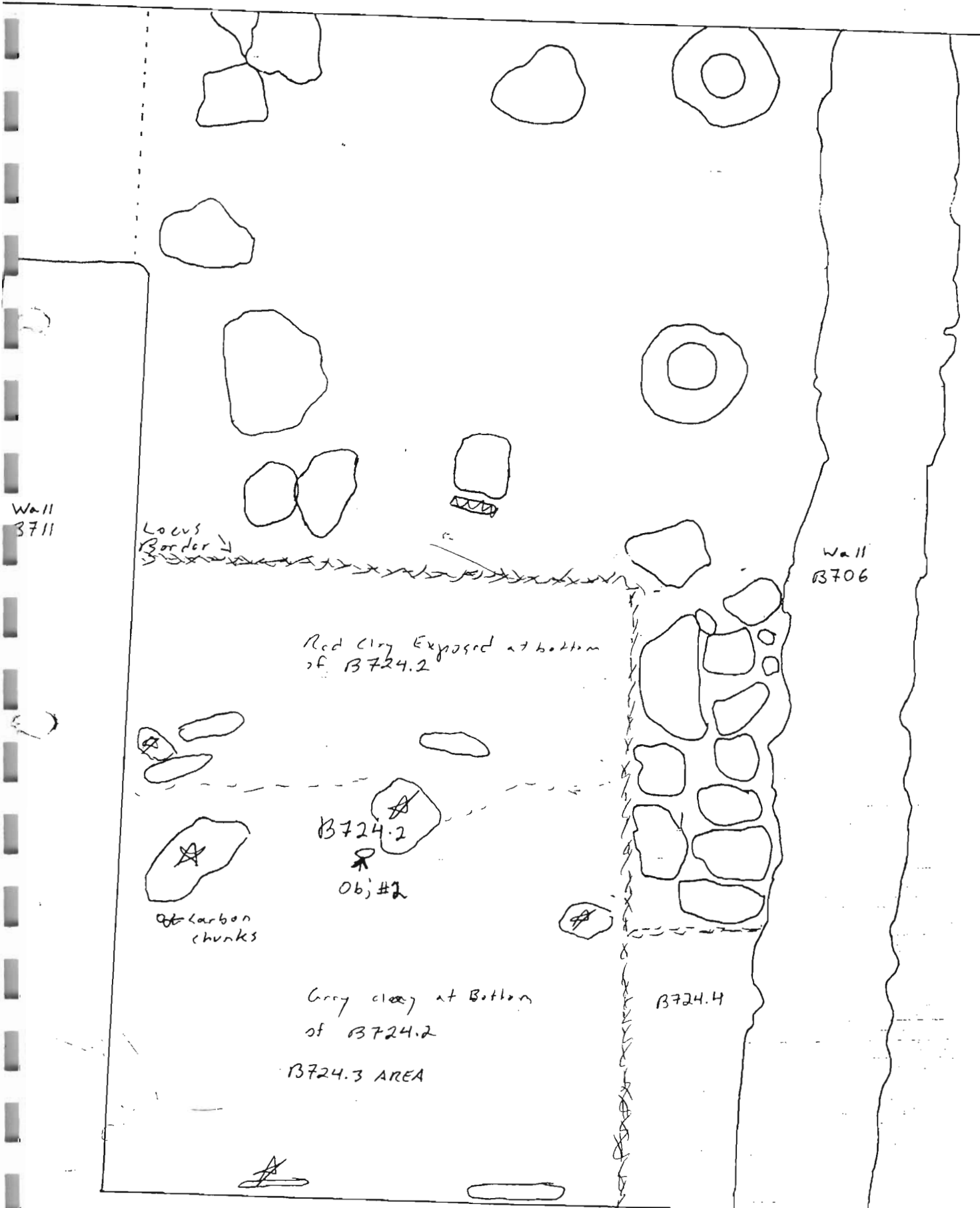
Wall B717

← N

Year 04 Trench/Locus B724 Excavator RQC

DESCRIPTION of PROGRESS of EXCAVATION [date each entry and identify associated pottery pail(s)]:

Wall B703



* = pulled stone

Wall B717

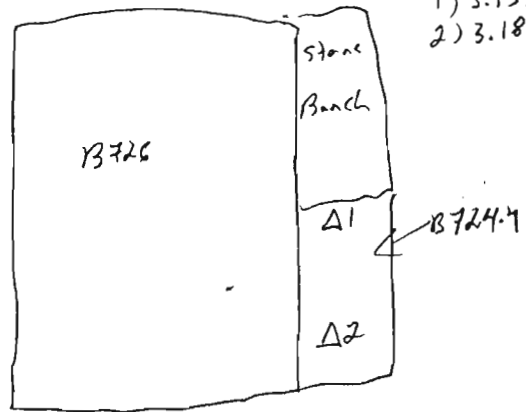
← N

Year 04 Trench/Locus B724 Excavator RQC

DESCRIPTION of PROGRESS of EXCAVATION [date each entry and identify associated pottery pail(s)]:

4 June 04: B724.4 is a pass of 5-10 cm over the area directly east of the southern stone bench. We are going to excavate this small area to the level of the bottom of B726.1. This will allow us to explore the southern stone concentration revealed by pass B726.1a. In B724.4 we are removing the Archaic grey clay floor & packing. Soil matrix same as B724.1 & 2 - grey clay with pebble inclusions, carbon flecks, few rocks of about fist-size. All soil removed is being screened 1/4". With this pail we are taking the bench down towards the reddish grey soil similar to B725's matrix, we will then take the remaining portion of this area down as B725.4. B724.4 has proceeded through both ~~Archaeic~~ Archaic floor surfaces similar to the surfaces identified in B724.1 & B724.2. Some bone recovered during digging, little pottery. ~~B724.4~~ B724.4 was completed and closed, elevations were taken of the bottom of B724.4 - ELs 1+2.

R11
 1+2: 1-183
 1) 3.135
 2) 3.182



Year 04 Trench/Locus B725 Excavator RQC

Elevations

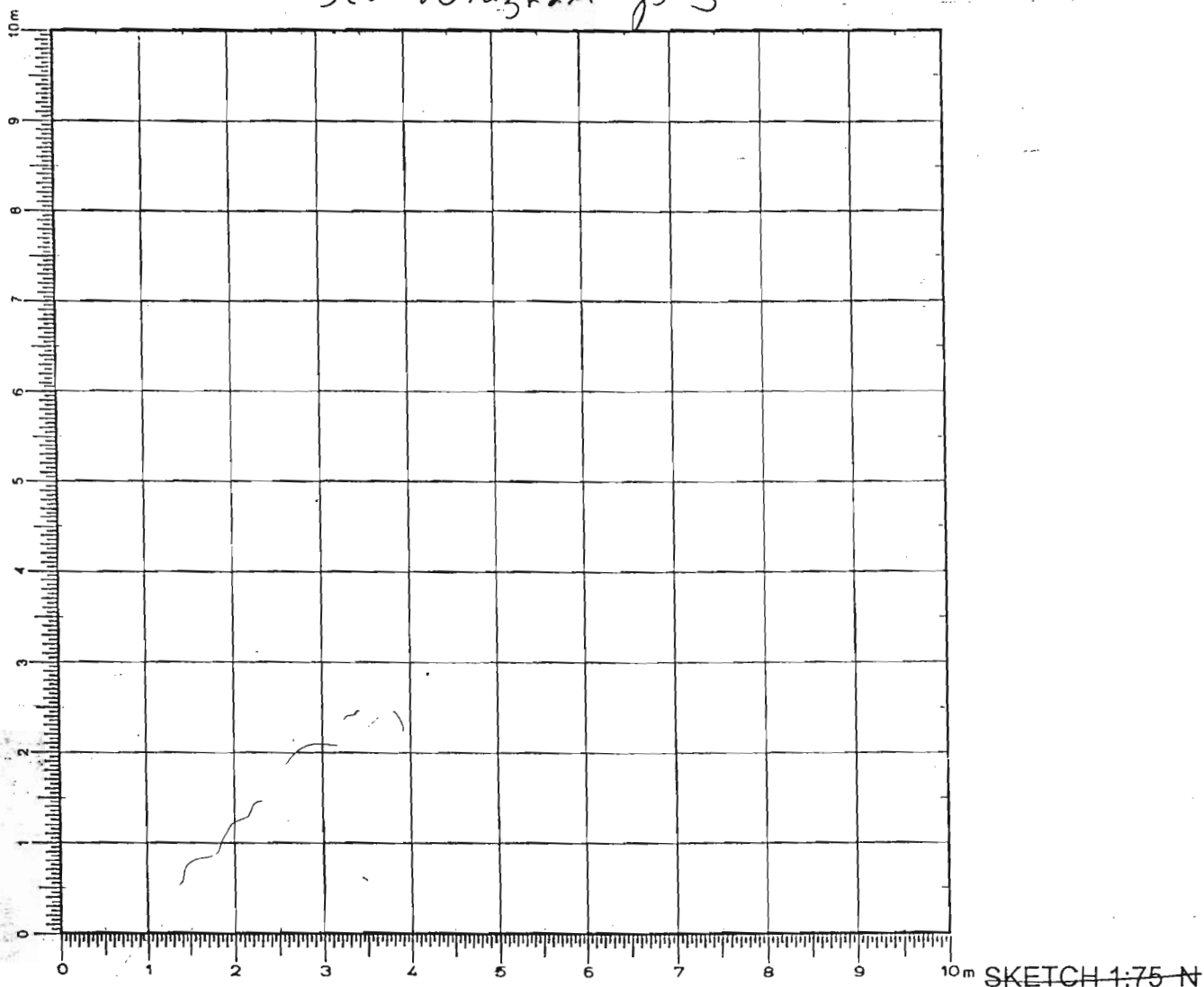
Benchmark used:

Reading on

Benchmark:

H.I.:

See Diagram p 3



DEFINITION/DESCRIPTION of LOCUS (explain why you changed locus numbers):

Today's date: 2 June 04Locus above: B724

Locus parameters: Northern border is wall B711, southern border is a stone bench, bounded on east by line of plank stones, on west by wall B717. See diagram p 3.

Verbal description: Hand packed red clay surface underneath the grey packed clay surface of B724.2. Possibly during Archaic, surface scraped down to this surface (possibly final Neolithic) & Archaic floor laid upon it. Surface of B725 is hand packed red clay with dist-sized & larger rock inclusions; surface of B725 is not thought to be a habitation surface. See diagram p.3.

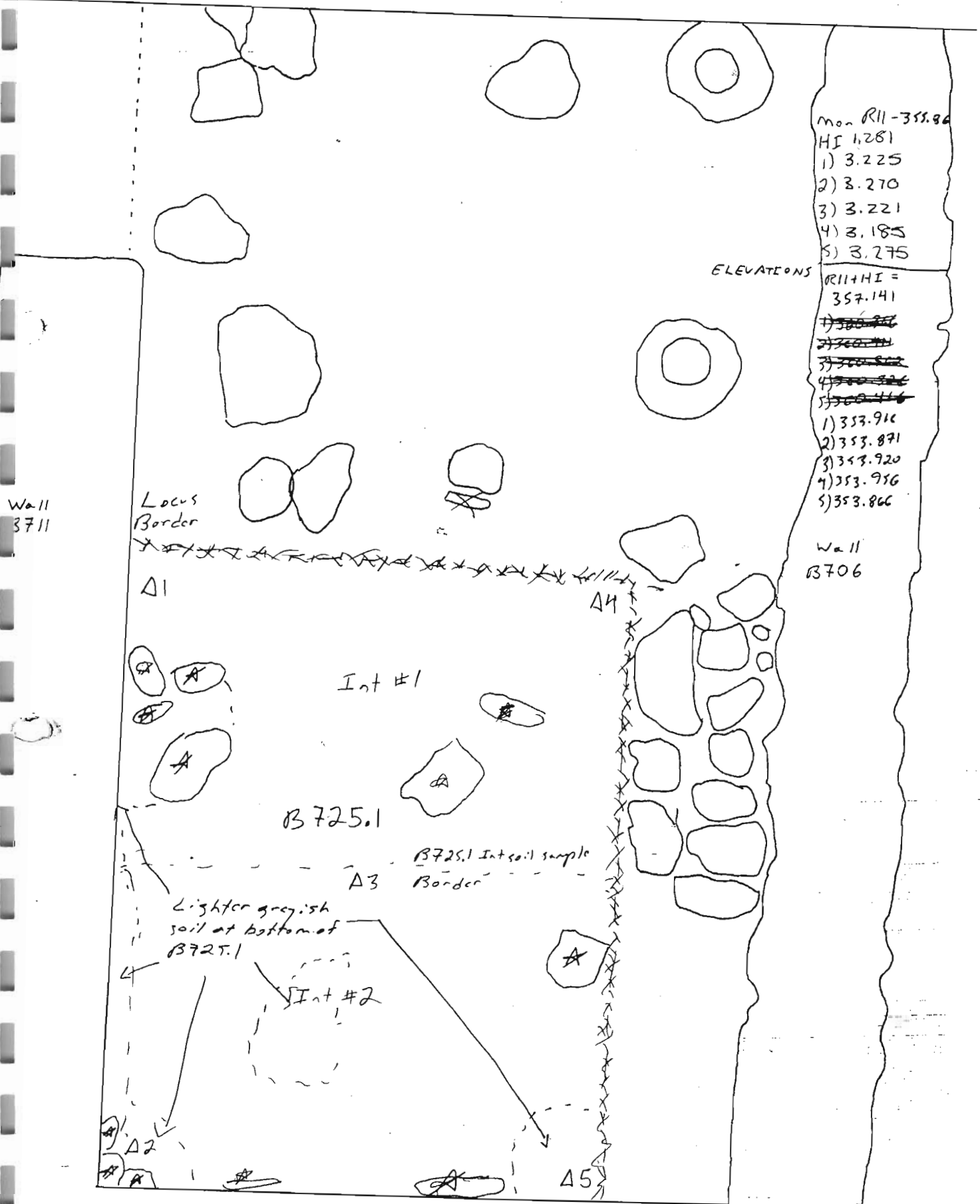
Locus Interpretative Comments (What do you think this is? DATE your comments, continue on additional pages if necessary): 2 June 04

B725.1 is a shallow pass ~5cm removing red clay from matrix with fist-size & larger rock inclusions. Intensive soil sample #1 is soil removed (5 Liter) from the eastern half of B725.1. A standard soil sample was taken, 5 liters. Intensive soil sample #2 (5 Liters) was taken from soil removed from the western half of B725.1 See Diagram p 3 for location of soil samples.

Year 04 Trench/Locus B725 Excavator RAC

DESCRIPTION of PROGRESS of EXCAVATION [date each entry and identify associated pottery pail(s)]:

Wall B703



Mon R11-355.86
 HI 1.281
 1) 3.225
 2) 3.270
 3) 3.221
 4) 3.185
 5) 3.275

ELEVATIONS

R11+HI =
 357.141
~~356.866~~
~~356.866~~
~~356.866~~
~~356.866~~
 1) 353.916
 2) 353.871
 3) 353.920
 4) 353.956
 5) 353.866

Wall B706

Wall B711

Locus Border

Int #1

B725.1

B725.1 Int soil sample Border

A3

Lighter greyish soil at bottom of B725.1

Int #2

Wall B717

← N Not to scale

* = pulled stones, removed during B724.3

Year 04 Trench/Locus B725 Excavator RRC

DESCRIPTION of PROGRESS of EXCAVATION [date each entry and identify associated pottery pair(s)]:

2 June 04 | Continued from p. 1: ~~Pass~~ Pass B725.1 is a shallow ~5cm pass over red clay that probably represents ~~the~~ a scraped final Neolithic surface over which the Archaic floor surfaces removed in pairs B724.1-B724.3 was laid. Soil varies from dark red hard-packed clay to lighter greyish soil in areas noted in the diagram on p. 3. Not much pottery was found, few pieces of bone. Three flint (?) stone flakes were recovered from B725.1. The surface exposed is not thought to be a habitation surface due to the large number of embedded rocks exposed. We are planning to remove the last greyish areas in a pair tomorrow. Elevations 1-5 on p. 3 are points taken from the top of B725.1. After greyish soil is removed tomorrow, we will continue to make small passes on B725 to discover whether embedded rocks comprise an early wall. All soil removed from B725.1 was screened 1/4" rocks found to be resting on the greyish Archaic Floor packing and isolated loose rocks were removed. Rocks removed before or during B725.1 are marked with a ~~*~~ on p. 3.

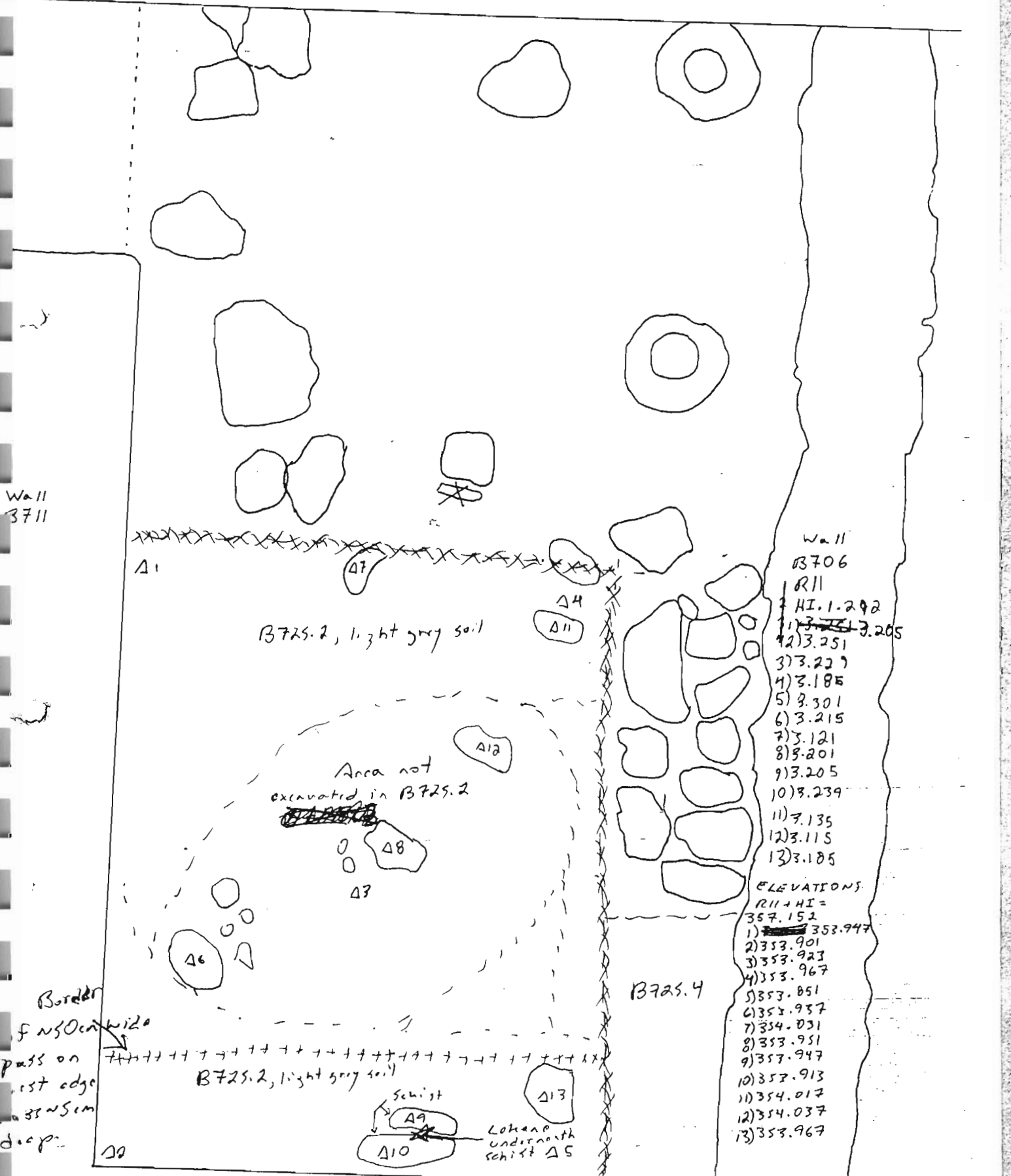
3 June 04 | We began today with pass B725.2, a shallow pass over areas of the bottom of B725.1 where greyish patches are still visible. ~~Soil~~ in grey patches is greyish/red clay with pebble inclusions. Surface underneath is hard-packed red clay with fist-sized & larger rock inclusions. All soil removed in pair B725.2 will be screened 1/4". Much grey soil removed from western edge of B725, ~10 cm. Elevations 1-5 are the bottom of B725.1. Elevations 6-13 are the tops of large rocks uncovered by B725.1. Few potsherds included in B725.2 matrix, mostly grey/brown clay with pebble inclusions. We are trying to remove the last of the Archaic floor packing (possible) in this pass to bring the soil surface down to the fist-sized & larger rock-embedded possible final Neolithic surface underneath. Schist rocks on which elevations 9 and 10 were taken were removed, revealing a courseware lokane underneath. A ~~small~~ north-south pass approx 50cm wide was taken over the western portion of the trench, still pair B725.2. The pass is ~5cm deep, removing reddish/grey soil with pebble inclusions, coming down on possibly softer redder clay underneath. All soil removed is screened 1/4". This pass has revealed the tops of several large stones. Fist-sized embedded stones still visible in central portion of trench (see diagram p. 5). Pair B725.2 was completed and closed. The western wall B717 appears to ~~rest~~ rest its lowest course upon the same level as the bottom of B725.2. The northern wall B711 also appears to rest on approximately the same level.

B725.3 is a pass across the embedded fist-sized & larger rocks in red clay at the bottom of B725.2. The pass begins at the eastern edge of the small N-S pass made in B725.2 and proceeds eastward across the surface of B725. As we come down onto the red clay with rocks embedded, isolated small rocks will be removed, larger rocks will be left in until it can be determined whether they comprise the remaining upper portion of a Neolithic wall. All soil removed will be sifted 1/4".

Year 04 Trench/Locus ~~B700~~ B725 Excavator RJC

DESCRIPTION of PROGRESS of EXCAVATION [date each entry and identify associated pottery pail(s)]:

Wall B703



- Wall B706
R11
HI. 1.292
~~1) 3.205~~
2) 3.251
3) 3.227
4) 3.185
5) 3.301
6) 3.215
7) 3.121
8) 3.201
9) 3.205
10) 3.239
11) 3.135
12) 3.115
13) 3.185

- ELEVATIONS
R11 + HI =
357.152
1) ~~353.947~~
2) 353.901
3) 353.923
4) 353.967
5) 353.851
6) 353.937
7) 354.031
8) 353.951
9) 353.947
10) 353.913
11) 354.017
12) 354.037
13) 353.967

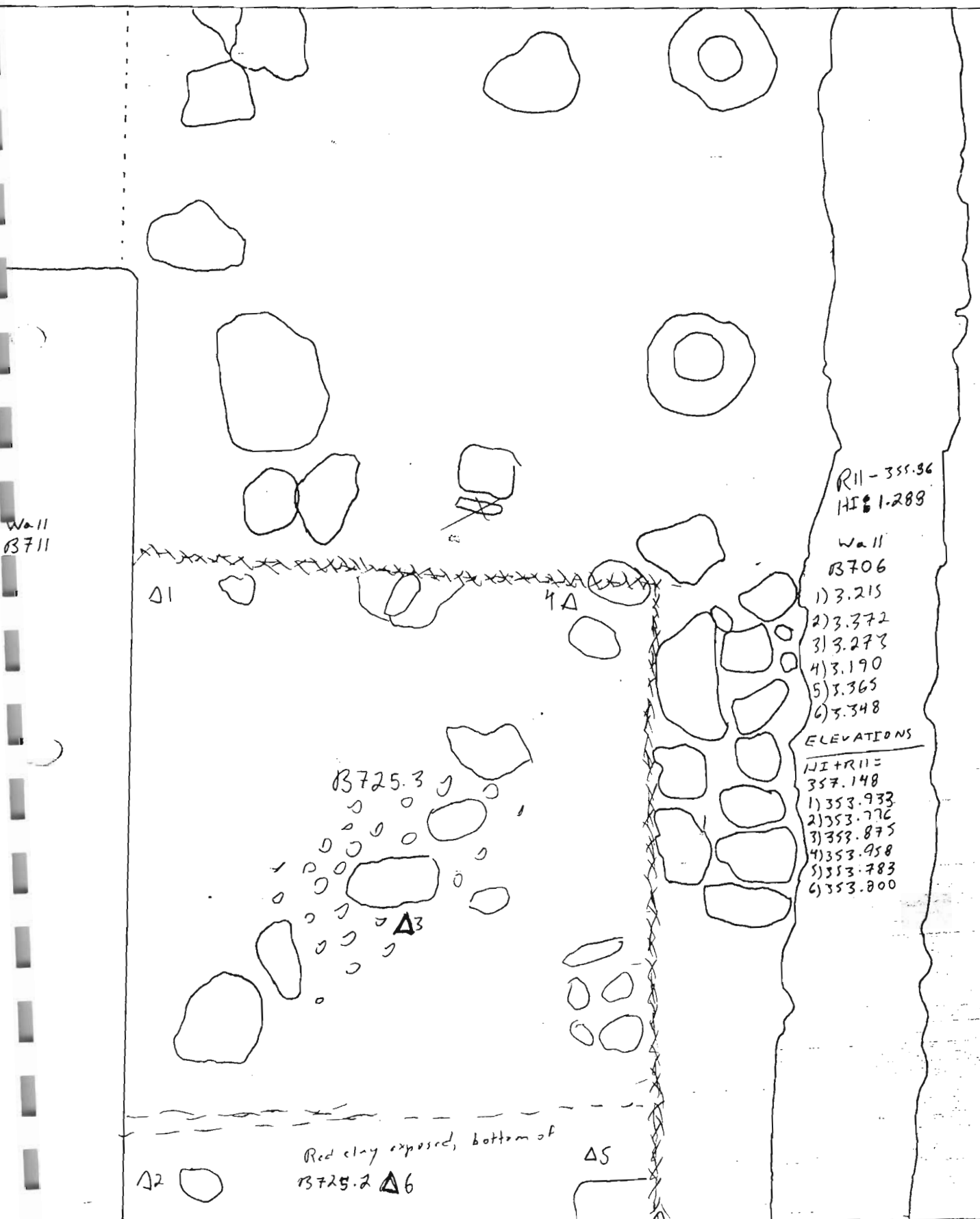
Wall B717

← N Not to scale.

Year 04 Trench/Locus B725. Excavator JRC

DESCRIPTION of PROGRESS of EXCAVATION [date each entry and identify associated pottery pail(s)]:

Wall B703



R11 - 355.36
HI 1.289

- Wall B706
- 1) 3.215
 - 2) 3.372
 - 3) 3.273
 - 4) 3.190
 - 5) 3.365
 - 6) 3.348

ELEVATIONS

HI + R11 =	357.148
1)	353.933
2)	353.776
3)	353.875
4)	353.958
5)	353.783
6)	353.800

B725.3

Red clay exposed, bottom of B725.2

NA to slide

← N

Wall B717

Locus Border

Year 04 Trench/Locus B725 Excavator RQC

DESCRIPTION of PROGRESS of EXCAVATION [date each entry and identify associated pottery pail(s)]:

3 Jun 04:

Pail B725.3 was completed & closed. Several central first-size stones, probably under-floor packing, were removed. The pass was ~4-6 cm deep, matrix is very red clay with inclusions of pebbles & possible floor packing. Large stones exposed may comprise the remains of the upper course of a Neolithic wall. Elevations 1-5 are the bottom of B725.2 on the western edge & the bottom of B725.3 on the eastern edge & center, (Els. 1, 3, 4). Elevation 6 is soil just below a coarseware lKano removed from underneath schist stones. All grey patches have been removed with this pass, soil exposed is very red clay throughout or greyish-red.

~~Pail B725.4 will be a shallow 5cm pass across the entire surface of B725. We will not be removing stones from the central stone concentration, we will instead work around the concentration to determine whether it is the top of a wall. X X X~~

~~It was decided to call what would have been pail B725.4 ^{instead} B726.1 since the last of the grey clay from Archaic floor packing has been removed. There is no pail B725.4.~~

The bottom of B725.3 was swept and photographed and locus B725 was closed. Locus B726 will explore the area underneath the bottom Archaic floor packing removed in B725.

4 June 04
B725.4 is an excavation of the area east of the stone bench at the southern edge of the trench. This area is being excavated with the intent of exploring the southern stone concentration revealed at the bottom of B726.1. We will take this area down to the same level as B726.1, soil removed is similar to that in B725.2, reddish/greyish clay, becoming redder as we move down. Pebble & carbon fleck inclusions, bone & pottery. All soil removed is sifted 1/4". B725.4 was completed & closed. ~10cm of soil removed, top of southern stone concentration has been revealed underneath. We will define this stone concentration further in B726.2.

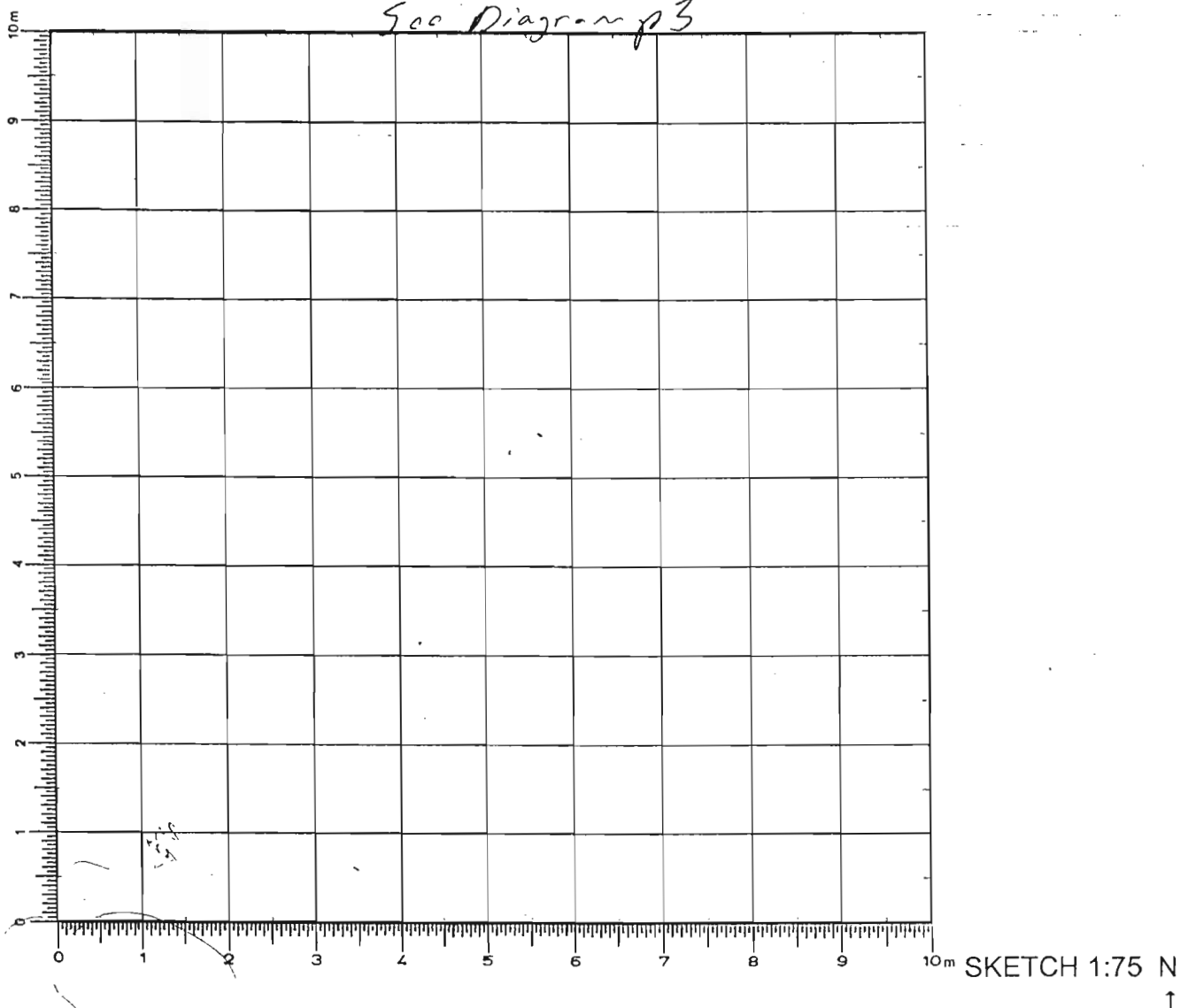
Year 04 Trench/Locus B726 Excavator RQCElevations

Benchmark used:

Reading on

Benchmark:

H.I.:



DEFINITION/DESCRIPTION of LOCUS (explain why you changed locus numbers):

Today's date: 3 June 04 Locus above: B725Locus parameters: Bounded by line of plank stones on E, wall B717 on W, stone bench on 5 and wall B711 on N. See diagram p3.

Verbal description: Surface ^{of B726 is} exposed underneath Archaic grey clay floor, packing, and transitional gray/red matrix underneath. Surface is dark red throughout, pebble inclusions. We are coming down onto several stone concentrations, notably in the central and southern portions of B726. North and south of the central stone concentrations, we will be removing soil to explore the extent of these concentrations and determine whether they are the upper courses of Neolithic walls. We will be removing soil in and around these concentrations slowly to define their nature & extent.

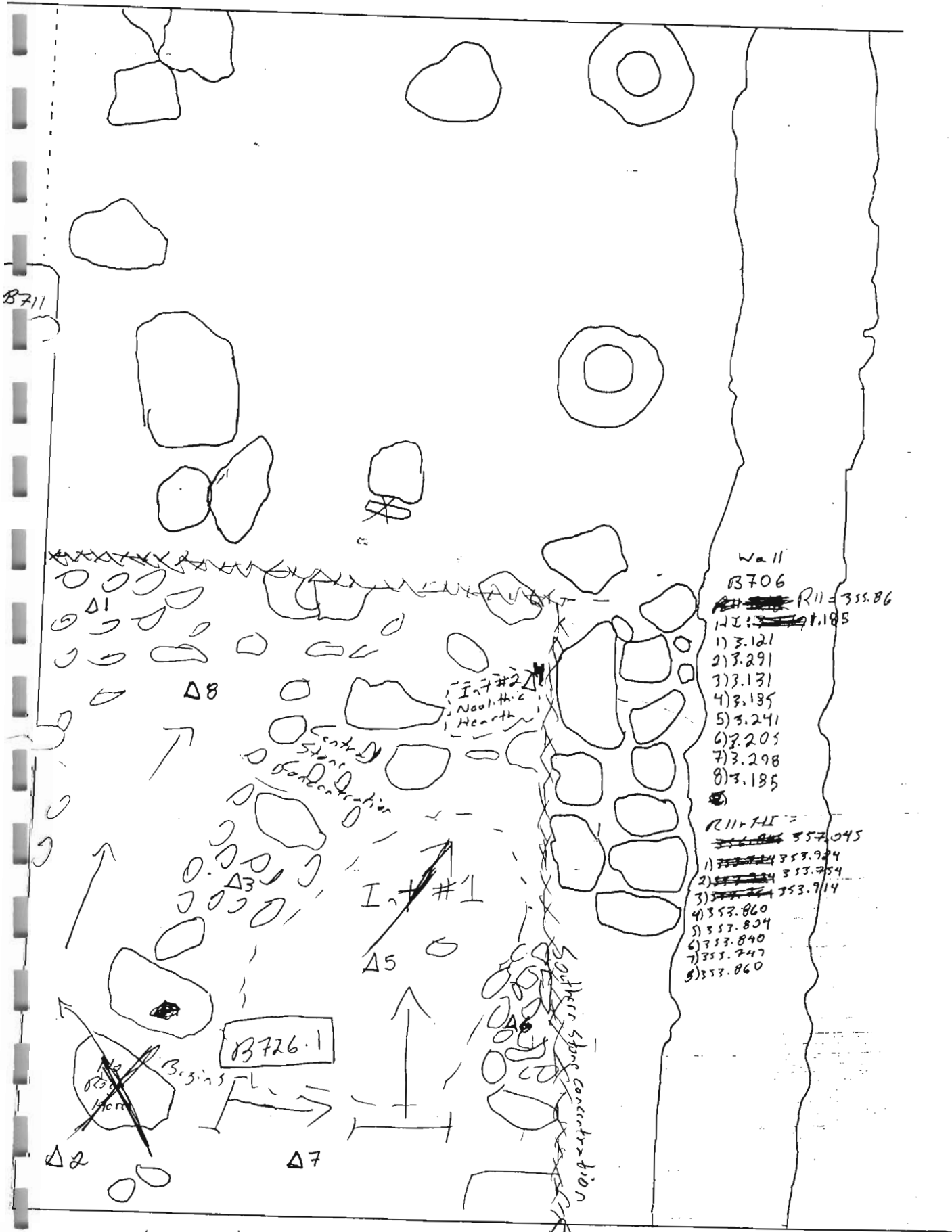
Locus Interpretative Comments (What do you think this is? DATE your comments, continue on additional pages if necessary): 3 June 04

Pair B726.1 is an initial pass, shallow, ~5cm, starting south of the central stone accumulation, proceeding between central & southern stone accumulations. See diagram p3. Clipped stone was recovered from 1/4" screen, all soil removed from B726 will be 1/4" screened.

Bar 04 Trench/Locus B3726 Excavator RQC

DESCRIPTION of PROGRESS of EXCAVATION [date each entry and identify associated tery pail(s)]:

Wall B703



- Wall B706
- ~~R11 = 355.86~~
- ~~1) 3.121~~
- 1) 3.121
- 2) 3.291
- 3) 3.131
- 4) 3.185
- 5) 3.241
- 6) 3.205
- 7) 3.298
- 8) 3.185
- ~~R11 + 7L =~~
- ~~357.045~~
- 1) ~~357.924~~
- 2) ~~357.754~~
- 3) ~~357.914~~
- 4) 357.860
- 5) 357.804
- 6) 357.840
- 7) 357.747
- 8) 357.860

← N. Wall B717

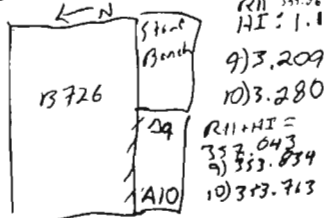
Locus Border

Year 04 Trench/Locus B726 Excavator RLC

DESCRIPTION of PROGRESS of EXCAVATION [date each entry and identify associated pottery pail(s)]:

3 June 04 5L
 A standard soil sample was taken from B726.1. An intensive sample was taken from the area south of the central stone concentration, north of southern stone concentration, called Intensive soil sample #1, 10 liters. Soil matrix consists of very dark red clay and pebble inclusions. Stone concentrations are not being excavated in this pass, we are removing soil from around these concentrations to better define them, ~~as well as~~ we are also carefully removing some soil from between stones in the stone concentrations to better define them, particularly the southern concentration. The soil removed from the area between stone concentrations (N+S) of central concentration is very red, carbon flecked, pebble inclusions. Approx 5-10cm of soil was removed from these areas, exposing what may be a final Neolithic surface. Surface appears to be somewhat compacted, few embedded rocks, most fist-size or smaller. Central stone concentration consists of a linear (?) accumulation of larger stones (>20cm) surrounded and topped by many stones of approx. fist-size and smaller. The southern stone accumulation is similar in composition, perhaps with fewer large stones. The northeastern portion of B726.1 has exposed many ~~the~~ fist-size and slightly larger stones, but these do not yet appear to be an accumulation similar to the central and southern accumulations, nor do these stones appear to be a linear accumulation. At the eastern edge of the central stone accumulation, another linear acc. of stones appears to abut the central accumulation and continue southward under the scarp to stone bench on the southern edge of B726. As B726.1 proceeded eastward over this N-S accumulation, several Neolithic potsherds, charred bone and a small Neolithic hearth (possible) were uncovered just east of the N-S accumulation. The surface of this feature was covered with red clay with lighter, tan/red soil mixed, small pebble + carbon fleck inclusions. The hearth ~~was~~ surface was covered by a small, flat rock with burning on the underside. Surface of hearth appears to be ~20cm diameter black charred soil with Neolithic potsherd and charred bone inclusions. Intensive soil sample #2 was taken from soil removed from above + around Neolithic hearth, ~4 liters. Pail B726.1 was completed, surface was swept and photographed. Tomorrow we plan to excavate the area ~~to~~ west of the stone bench to the same level as ~~the east of the~~ B726.1. Since a hearth has been uncovered east of the N-S accumulation, it is thought that this may be an interior space and that this linear accumulation may be the top of a wall that goes under B706 to meet at a nearly right angle with ~~the~~ Neolithic wall B31220 in trench B1200. Tomorrow we are also planning to explore and define the stones in the NE ^{in this area} corner of B726. One piece of possible chipped stone was recovered from B726.1

4 June 04 We begin today taking elevations at the bottom of B726.1. Elevations 1, 3, + 6 are stone concentrations, 5, 7, 2 + 8 are the top of a possible surface; 4 is a Neolithic hearth. ~~The~~ The area east of the southern stone bench has been taken down to the top of the southern rock concentration, which was found to continue under this area. Elevations were taken in this area at the bottom of B725.4, see diagram to left

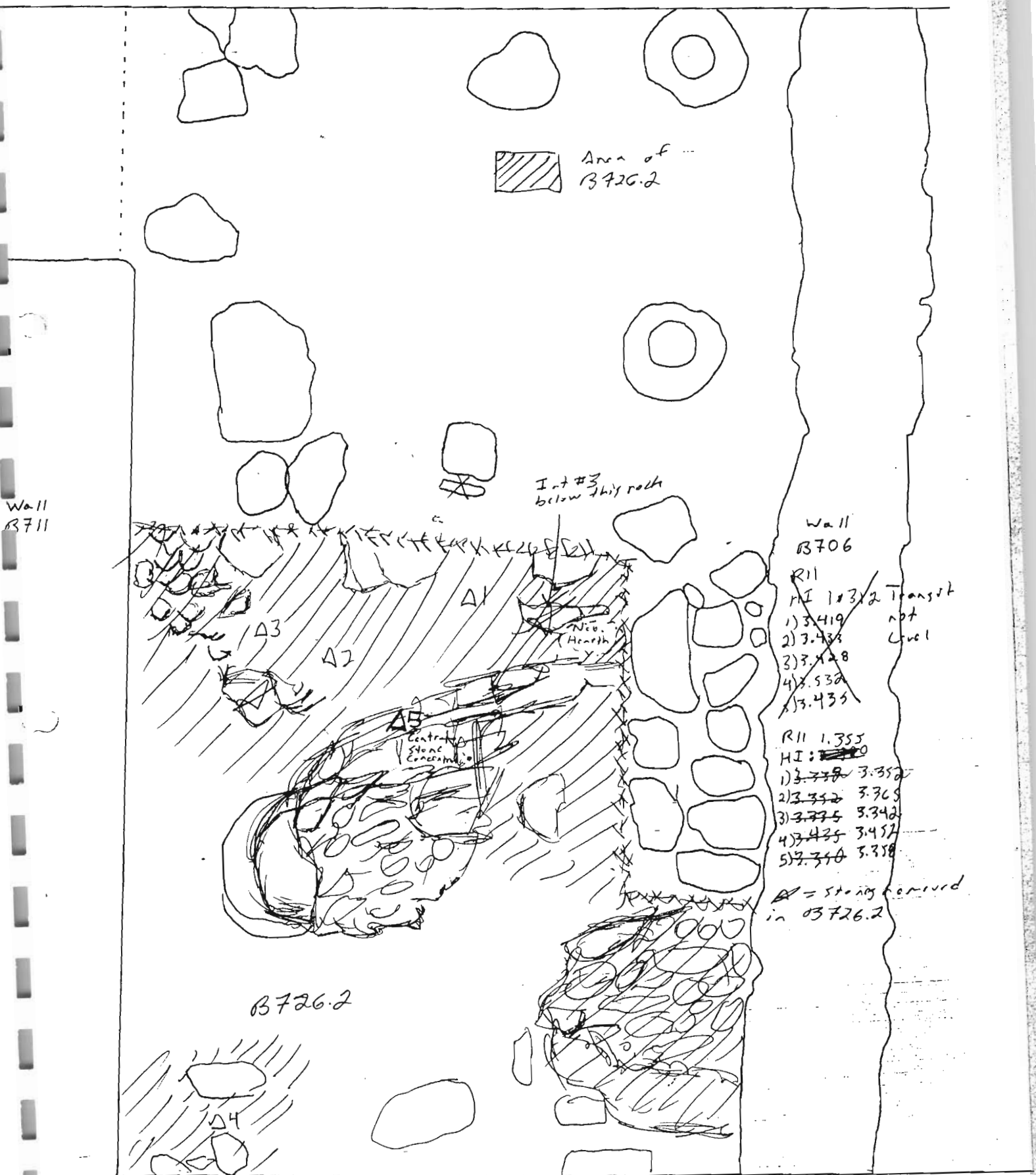


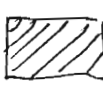
B726.2 is soil cleaned from around stone concentrations, particularly the northeastern and southern concentrations. Object of this part is to define these concentrations to determine whether they are Neolithic walls, platforms, etc. All soil removed is screened 1/4" soil matrix is very dark red, pebble inclusions

Year 04 Trench/Locus B726 Excavator ARC

DESCRIPTION of PROGRESS of EXCAVATION [date each entry and identify associated pottery pail(s)]:

Wall B703



 Area of B726.2

Int #3 below this rock

Wall B706

- R11
 HI 10312 Transit not Level
- 1) 3.419
 - 2) 3.433
 - 3) 3.428
 - 4) 3.530
 - 5) 3.435

- R11 1.355
 HI: ~~10310~~
- 1) ~~3.338~~ 3.352
 - 2) ~~3.332~~ 3.369
 - 3) ~~3.375~~ 3.342
 - 4) ~~3.425~~ 3.452
 - 5) ~~3.350~~ 3.358

A = stones removed in 03726.2

B726.2

← N Wall B717
Not to scale

Year 04 Trench/Locus B726 Excavator ORJC

DESCRIPTION of PROGRESS of EXCAVATION [date each entry and identify associated pottery pail(s)]:

4 June 04 B726.2 is continuing to define the southern stone concentration that was covered partially by the area excavated in B724.4 + B725.4. Top of southern stone concentration appears to be relatively flat and uniform - possible stone platform? Top of stone concentration becomes lower towards the eastern edge of B726. Pail B726.2 is going down ~ 5 cm on the western edge of B726, this area is still a bit higher than the NE corner of the Neolithic hearth, so we are going to take it down to about the same level, sweep it down to determine what is underneath. ~~The rock just east of the Neolithic hearth was found to be predestined and was removed, revealing a continuation of burnt soil underneath. The soil removed below the rock was taken as Intensive soil sample #3, 1 liter. Large stones removed in B726.2 are marked with an A on pt.~~

7 June 04 Pail B726.3 is the soil between the stones in the southern stone concentration, we are removing soil between these stones to better define them so that they can be drawn. All soil removed is being taken as Int soil sample #4. Soil is red clay, no pottery or bone found while this soil was being removed. Pail B726.4 is soil removed from between stones in the central stone concentration. All soil removed is being collected as Int soil sample #5. Soil is being removed to better define the edges of rocks in the concentration so that it can be drawn. ~~Both B726.3 and B726.4 were completed & closed.~~ Both B726.3 & B726.4 were completed & closed.

Year 04 Trench/Locus ~~B727~~ B727 Excavator RAC

Elevations

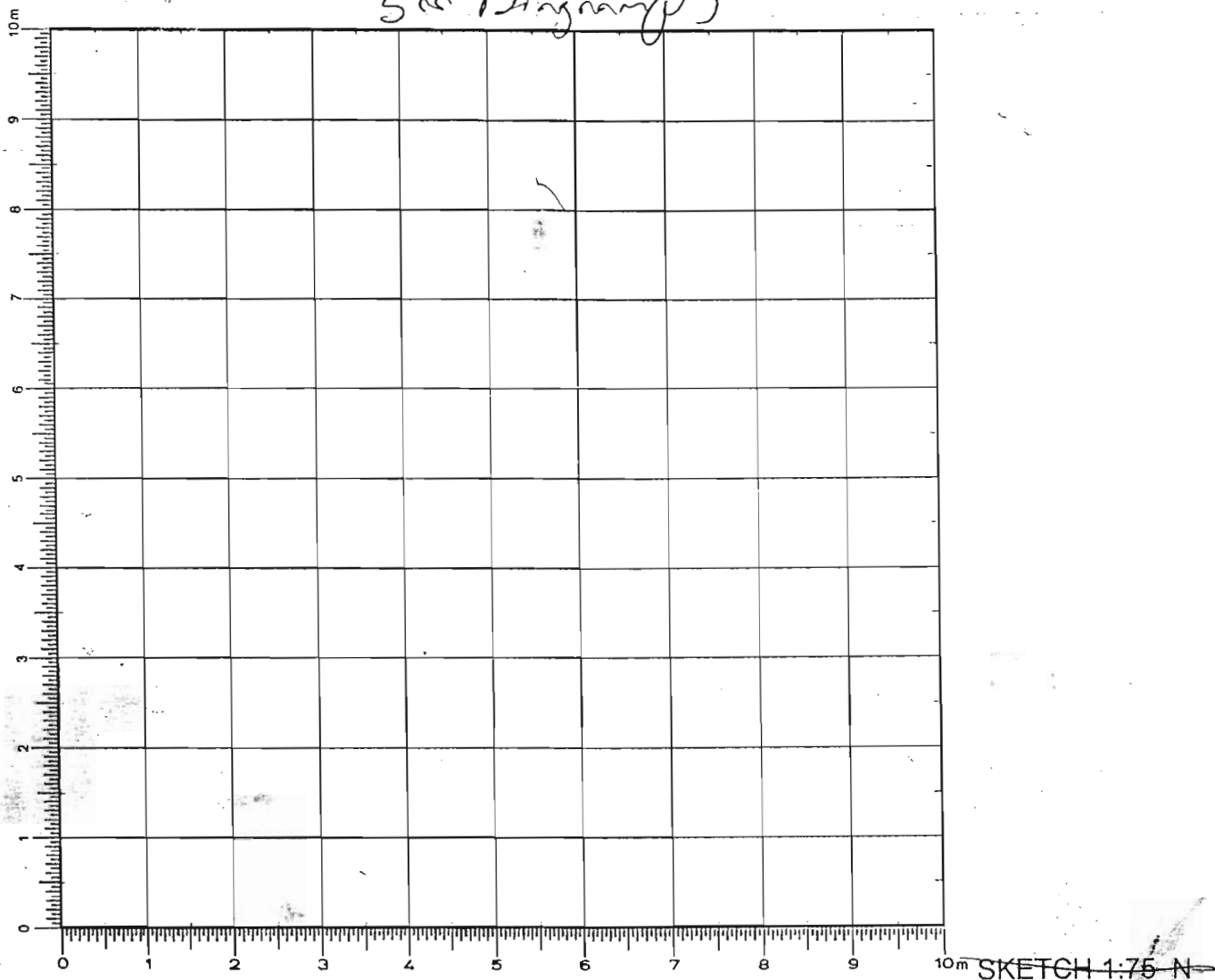
Benchmark used:

Reading on

Benchmark:

H.I.:

See Diagram P3



DEFINITION/DESCRIPTION of LOCUS (explain why you changed locus numbers):

Today's date: 7 June 04 Locus above: B726

Locus parameters: Possible Neolithic hearth east of N-5 linear stone accumulation on eastern edge of B726. North of stone bench, see diagram P3. Bounded on the east by the eastern scarp.

Verbal description: B727 is a burnt area ~20cm in diameter, neolithic pottery and burnt bone inclusions. This burnt area was overlaid by two rocks removed in B726 + B725. Fill is reddish to black burnt soil. Lighter soil on surface directly North of the feature. Lighter soil also present west of B727, under light yellow, possible ash? B727 was found to contain a concentration of disarticulated pig bone, see diagram P3.

Locus Interpretative Comments (What do you think this is? DATE your comments, continue on additional pages if necessary): 7 June 04 B727.1 is scrapings from the surface of

B727 exposed by pass B726. We are scraping the pottery and charred bone out of the surface and looking at the soil underneath, which appears to be grayish/black with carbon flecks. Also reddish clay mixed within. Extensive soil sample #1 is all soil removed from scraping the surface of the possible hearth.

DESCRIPTION of PROGRESS of EXCAVATION [date each entry and identify associated pottery pail(s)]:

Wall B703

R11 - 355.86

- HI 1.072
- 1) 3.122
 - 2) 3.005
 - 3) 3.020
 - 4) 3.055
 - 5) 3.140
 - 6) 3.042
 - 7) 3.075
 - 8) 3.100
 - 9) 2.355

- HI + R11 = 356.932
- 1) 353.810
 - 2) 353.927
 - 3) 353.912
 - 4) 353.877
 - 5) 353.792
 - 6) 353.890
 - 7) 353.857
 - 8) 353.832
 - 9) 354.577

R11
HI: ~~1.216~~
1.216

Wall B706

- 10) 3.070
- 11) 3.230
- 12) 3.158
- 13) 3.176
- 14) 3.256
- 15) 3.198
- 16) 3.231
- 17) 3.312
- 18) 3.325
- 19) 2.697
- 20) 2.195

R11 + HI = 357.076

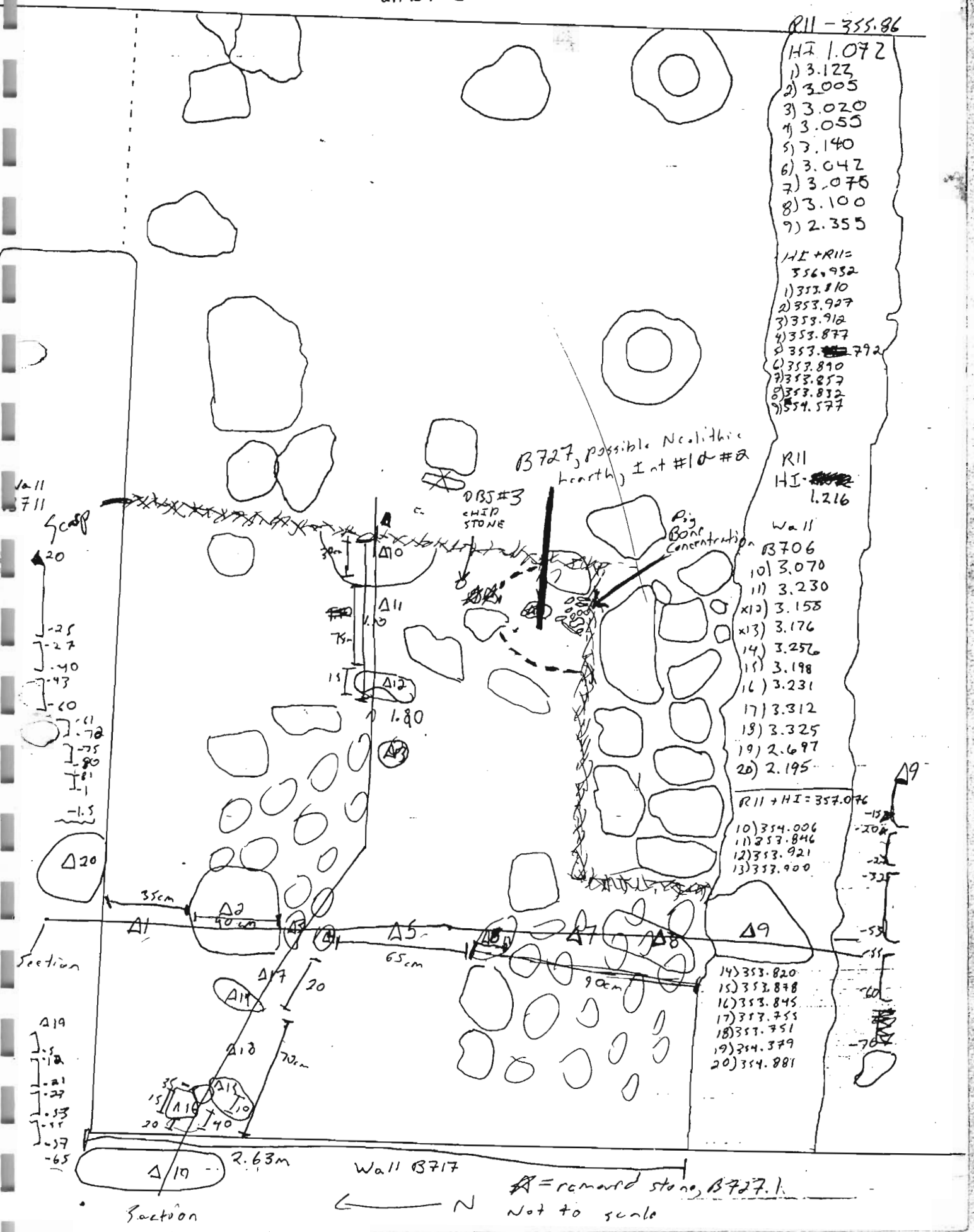
- 10) 354.006
- 11) 353.846
- 12) 353.921
- 13) 353.900

- 14) 353.820
- 15) 353.878
- 16) 353.845
- 17) 353.755
- 18) 353.751
- 19) 354.379
- 20) 354.881

B727, possible Neolithic hearth, Int #10 #2

DBS#3
CHIP
STONE

Pig Bone Concentration



Wall B717
 ← N
 * = removed stone, B727.1.
 Not to scale

Year 04 Trench/Locus B727 Excavator RJC

DESCRIPTION of PROGRESS of EXCAVATION [date each entry and identify associated pottery pail(s)]:

7 June 04 | Several neolithic pottery shards and charred bones were embedded in the surface of B727. These were removed in B727.1, as well as one chipped stone piece. Int #1 was all soil removed in B727.1. Soil underneath embedded pottery and bone is very dark, black, carbon flecks included. Pail B727.1 continues with soil in and around the surface of B727. We are taking soil down around the edges of the burnt area to find the edges of the burnt patch/hearth. Bone concentration uncovered in the southern edge of B727, pig bones? Soil around darkest portion of burnt patch becomes slightly darker as we come down, still charred bone & neolithic pottery inclusions. In situ bones in concentration of the southern portion of B727 were photographed. As we continue to come down on the southern pig bone concentration, we continue to clean and define it for photography. All soil removed from pig bone concentration added to Int #1. Blackish soil in B727.1 becomes reddish as we remove it in the southern portion of the burnt patch, becomes light yellowish towards the northern portion of the burnt patch, similar to yellowish soil outside and to the immediate north of this locus. We are planning on taking the bone concentration out bone by bone once it has been defined & photographed. Bones appear disarticulated. After bone concentration was defined, it was again photographed. Light yellowish soil around it in B727.1 may be ash, B727 may be a dump of ash, pig bones, and pottery rather than a hearth. Some pig bones removed from the concentration after it was photographed today, the rest will be removed tomorrow as a separate pail. Bone concentration is noted on diagram on p3. Several stones were resting atop the burnt patch of B727, those removed were marked with a # on p3.

8 June 04 | Today we are continuing to remove pig bones from the bone concentration in B727, this will be removed as B727.2, all soil removed will be collected as Int soil sample #2. Bones are being removed as they are defined, since they are disarticulated. Elevations for an east-west section were taken c. 10-20. AS WE CONTINUE TO COME DOWN ON THE PIG BONE CONCENTRATION, THE SOIL AROUND AND UNDER THE BONE CONCENTRATION BECOMES DARKER REDDISH/BLACK. A SMASHED NEOLITHIC VESSEL APPEARS TO UNDERLIE THE PIG BONE CONCENTRATION. BONES APPEAR TO REMAIN LARGELY DISARTICULATED IN THE POT. BLACKENED/BURNT SOIL UNDERNEATH MAY INDICATE A HEARTH. PIG BONES IN CONCENTRATION WERE REMOVED AFTER BEING PHOTOGRAPHED, AND A NEOLITHIC POT BASE (SMASHED) HAS BEEN REVEALED BENEATH THIS POT BASE WILL BE LEFT IN SITU UNTIL IT CAN BE DRAWN. STONE CONCENTRATIONS ATOP B726 WILL ALSO BE DRAWN.

10 JUNE 04 | THE NEOLITHIC POTTERY BASE THAT UNDERLIED THE PIG BONE CONCENTRATION WAS REMOVED TODAY AS B727.3. SOME BONE WAS RECOVERED WHILE REMOVING POTTERY BASE. SOIL EXPOSED AROUND & BENEATH THE POT BASE IS VERY DARK RED AND BLACK. SOME NEOLITHIC SHERDS STILL REMAIN EMBEDDED IN THE SURFACE OF THE NEOLITHIC HEARTH AREA, BUT WERE NOT REMOVED BECAUSE SOME APPEAR TO CONTINUE INTO AN UNEXCAVATED PORTION OF THE HEARTH.

11 JUNE 04 | REMAINING NEOLITHIC POTSHERDS EMBEDDED IN SURFACE OF HEARTH WERE REMOVED TODAY AS B727.4, ALL SOIL REMOVED WAS TAKEN AS INTENSIVE SOIL SAMPLE #3.

Year 04 Trench/Locus B727 Excavator RJC

DESCRIPTION of PROGRESS of EXCAVATION [date each entry and identify associated pottery pail(s)]:

PAIL D727.5 IS

14 JUNE 04 A SHALLOW PASS WAS MADE (W3.2M) OVER THE AREA IN AND AROUND NEOLITHIC HEARTH. SOIL REMOVED VERY DARK RED MIXED WITH LIGHTER YELLOW ASHY (?) SOIL. ALL SOIL REMOVED TAKEN AS INTENSIVE SOIL SAMPLE #4. ONE PIECE OF CHIP STONE WAS RECOVERED, OBJECT #3. NO POTTERY WAS RECOVERED. SOME PIECES OF BONE WERE RECOVERED, SOIL UNDERNEATH IS DARK RED TO YELLOWISH RED ASH, APPEARS STERILE, NO ROCKS EMBEDDED IN EXPOSED SURFACE.

Y-FAIC U-1

354.71
2.41
120.87

141: ~~1.66~~ 2.448

R144HI = 356.00

- 1) 3.035
- 2) 2.963
- 3) 2.863
- 4) 2.745
- 5) 2.909
- 6) 5.010

- 1) ~~353.78~~ 353.78
- 2) 353.06
- 3) 353.76
- 4) 353.86
- 5) 353.91
- 6) 353.81

BOTTOM B727.5



WALL B711

A5

A4

A2

A3

A1

STONE
BENCH

WALL B706

A6

WALL B712

A7

~~XXXXXXXXXX~~

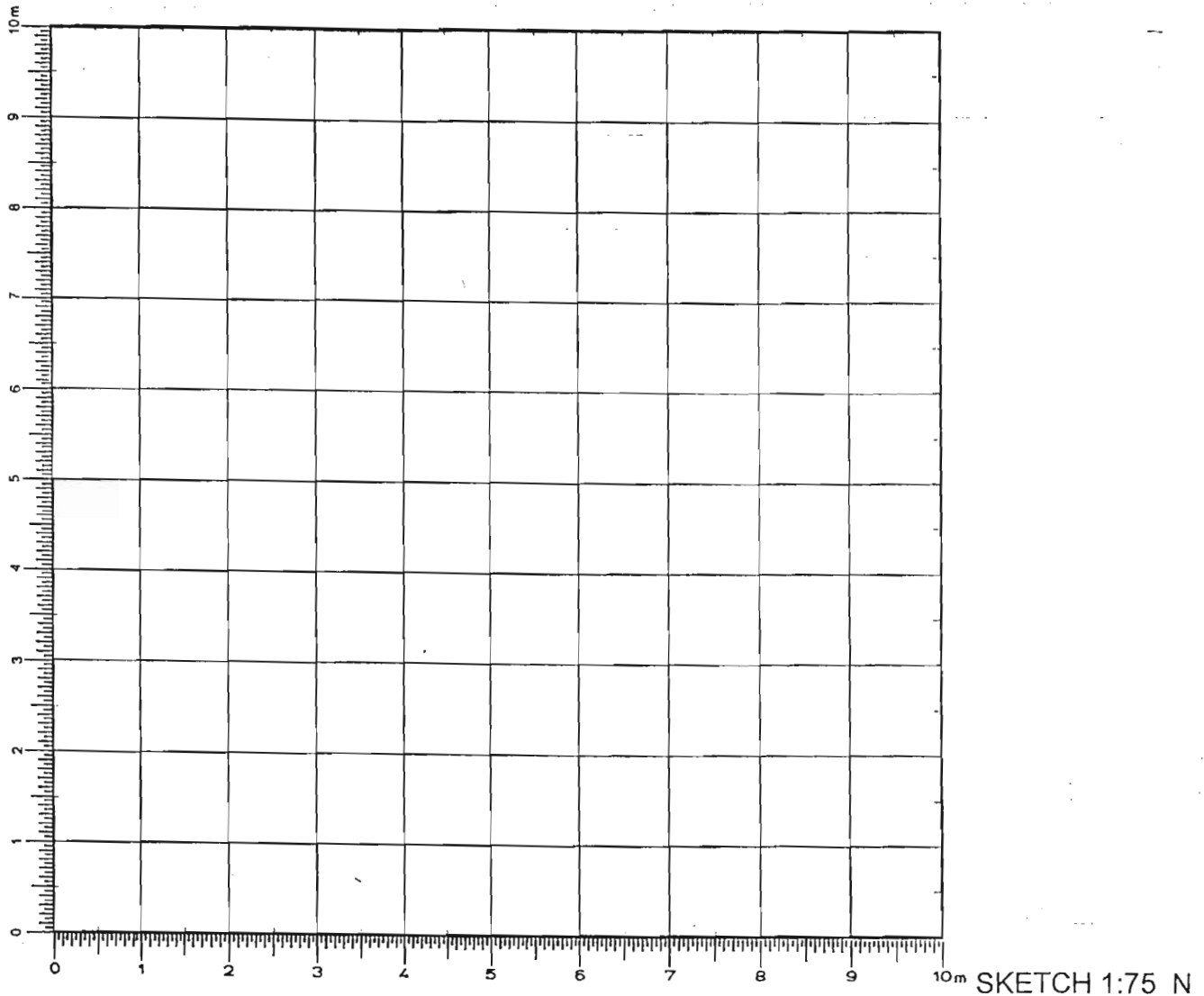
Year 04 Trench/Locus B728 Excavator Rac**Elevations**

Benchmark used:

Reading on

Benchmark:

H.I.:



DEFINITION/DESCRIPTION of LOCUS (explain why you changed locus numbers):

Today's date: 18 JUNE 04 Locus above: B72CLocus parameters: BOUNDED ON SOUTH BY STONE BENCH + WALL B706, ON WEST BY WALL B712, ON NORTH BY WALL B711, ON EAST BY LINE PERPENDICULAR TO WALLS B706 + B711, 20 CM WEST OF PLAKA STONES. SEE DIAGRAM P.3.Verbal description: B728 IS A POSSIBLE FINAL NEOLITHIC SURFACE REVEALED BETWEEN SOUTHERN & CENTRAL STONE CONCENTRATIONS AND IN WESTERN PORTION OF TRENCH, SEE DIAGRAM P.3. SURFACE IS HARDPACKED ORANGE/RED CLAY, REDDISH (POSSIBLY BURNT) CRUMBLY SOIL AS ~~SOIL~~ MATRIX.

Locus Interpretative Comments (What do you think this is? DATE your comments, continue on additional pages if necessary):

PAIL B728.1

B728.1 IS A 3 - 5 CM PASS OVER THE ENTIRE SURFACE OF LOCUS B728. SEE DIAGRAM P.3 FOR LOCATION. WITH THIS PASS WE ARE REMOVING POSSIBLE FINAL NEOLITHIC SURFACE AND PACKING. SOIL MATRIX IS ORANGE/RED HARD-PACKED CLAY, INCLUDED WITH PEBBLES AND A FEW

Year 04 Trench/Locus B728 Excavator RAC

DESCRIPTION of PROGRESS of EXCAVATION [date each entry and identify associated pottery pail(s)]:

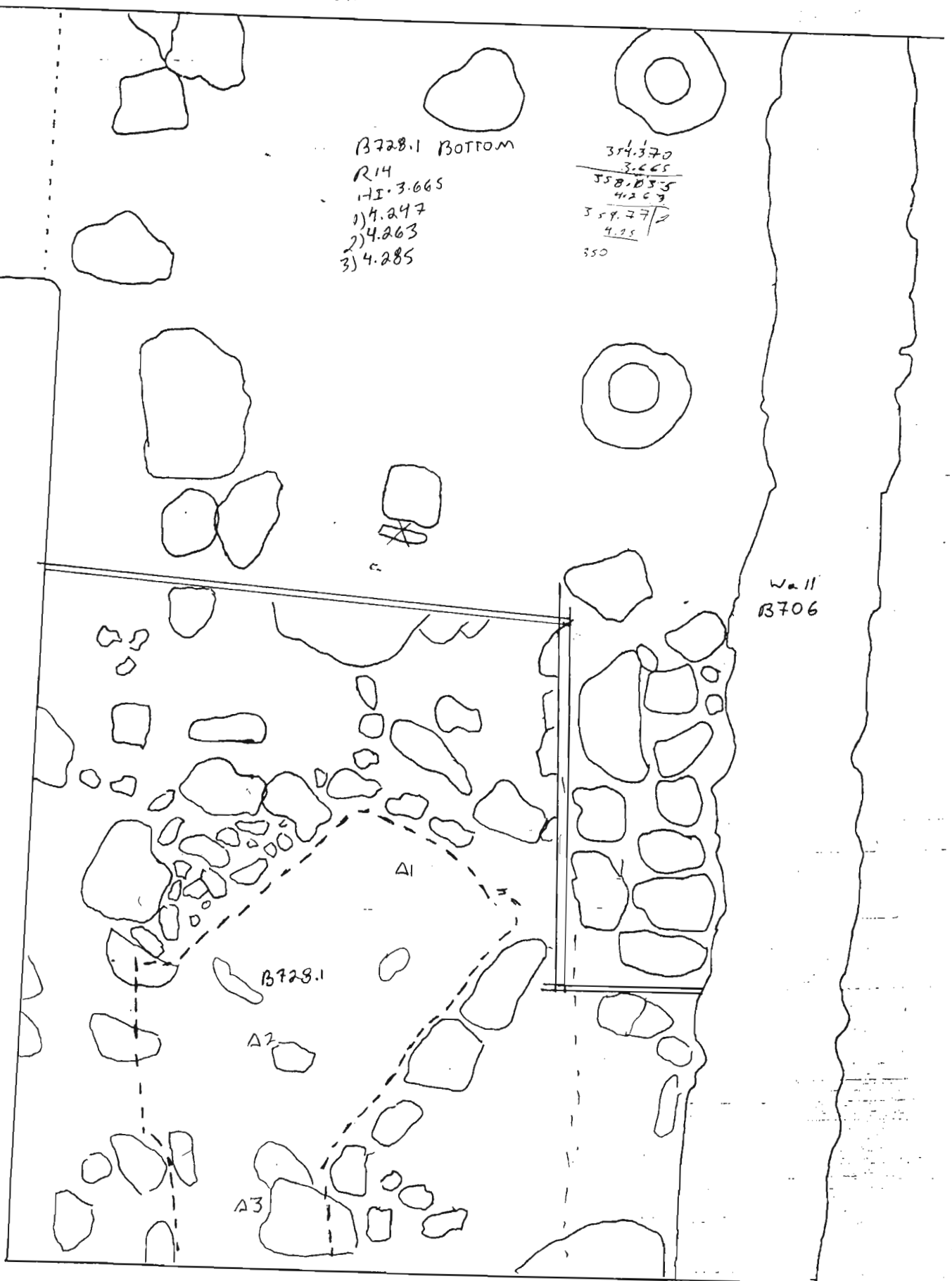
Wall B703

B728.1 BOTTOM
R14
HI 3.065
1) 4.247
2) 4.263
3) 4.285

354.370
3.265
358.035
412.63
354.772
4.25
350

Wall
711

Wall
B706



Wall B717

← N

Year 04 Trench/Locus B729 Excavator RAC

DESCRIPTION of PROGRESS of EXCAVATION [date each entry and identify associated pottery pail(s)]:

18 JUNE 2004

FIST-SIZED ROCKS. SOIL AT BOTTOM OF PASS MUCH THE SAME AS ON TOP, ORANGEY CLAY WITH FIST-SIZE & LARGER STONES EMBEDDED. SOIL REMOVED ALMOST COMPLETELY STERILE, ONE PIECE OF BONE RECOVERED FROM SCREEN, ONE PEBBLE 1/2 CM DIAMETER RECOVERED. ALL SOIL REMOVED WAS SIFTED 1/4" NY ZEMBLIA OF SOIL REMOVED. SURFACE EXPOSED VERY REGULAR, SMOOTH, SOIL MATRIX SAME AS TOP OF B729.1