



Switching from linear to macrocyclic gadolinium-based contrast agents halts the relative T1-weighted signal increase in deep gray matter of children with brain tumors: a retrospective study

Journal:	<i>Journal of Magnetic Resonance Imaging</i>
Manuscript ID	JMRI-19-0280.R1
Wiley - Manuscript type:	Original Research
Classification:	Contrast enhancement techniques < Imaging Principles and Education < Basic Science, Safety and biohazards < Imaging technology and safety < Basic Science, Imaging techniques and processing < Imaging technology and safety < Basic Science, Contrast enhancement (head and neck) < Head and neck imaging < Clinical Science
Manuscript Keywords:	contrast agent, gd deposition, brain, pediatrics, mri

SCHOLARONE™
Manuscripts

1
2
3 Switching from linear to macrocyclic gadolinium-based contrast agents halts the relative T1-
4
5 weighted signal increase in deep gray matter of children with brain tumors: a retrospective
6
7 study
8
9

10 Selene K Rowe¹ MSc, Daniel Rodriguez² PhD, Ellie Cohen¹ BSc, Richard Grundy³ MD PhD, Paul
11
12 S Morgan² PhD, Tim Jaspán¹ MD, Robert A Dineen¹ PhD.
13
14

15
16
17
18 ¹ Radiology, Nottingham University Hospitals, Queen's Medical Centre, Nottingham, UK.
19

20 ² Medical Physics and Clinical Engineering, Nottingham University Hospitals, Queen's
21
22 Medical Centre, Nottingham, UK.
23
24

25 ³ Children's Brain Tumour Research Centre, Nottingham University Hospitals, Queen's
26
27 Medical Centre, Nottingham, UK.
28
29

30
31
32 Corresponding author:
33

34 Daniel Rodriguez, Medical Physics, Nottingham University Hospitals NHS Trust, Derby Road,
35
36 Nottingham NG7 2UH, United Kingdom.
37
38

39
40 daniel.rodriguez@nuh.nhs.uk
41
42

43
44
45 Selene Rowe and Daniel Rodriguez contributed equally as first authors of this manuscript
46
47

48
49 Running Title
50

51
52 Gd T1w increase in children's brain
53
54
55
56
57
58
59
60

ABSTRACT

BACKGROUND: Studies have shown signal intensity (SI) changes in brains of children exposed to repeated doses of gadolinium-based contrast agent (GBCA). **HYPOTHESIS:** Trajectory of changes in relative dentate nucleus (DN) and globus pallidus (GP) SI in children receiving multiple doses of GBCA will alter when switched from linear to macrocyclic agents.

STUDY TYPE: retrospective longitudinal. **POPULATION:** 35 children, age range [0.5-17.0] years, undergoing brain tumor follow-up between 2006 and 2017. **FIELD**

STRENGTH/SEQUENCE: Unenhanced T1WI, serial scans at both 1.5 and 3 Tesla.

ASSESSMENT: Regions-of-interest were drawn on DN, GP, and SI's normalized to middle cerebellar peduncle (DN/MCP) and cerebral white-matter (GP/CWM) respectively. Change in SI ratios as a function of dose (slope gradient) calculated according to type of contrast agent received: linear only, macrocyclic only, or switchover from linear to macrocyclic. For the latter, gradients were compared before and after switchover. The effect of anticancer treatment on slope gradient was tested. **STATISTICAL TESTS:** One-sample t- or Mann-Whitney U- tests for slope gradients differing from zero. Independent samples t-tests to compare slope gradient groups. Paired sample t-tests to compare slope gradients before and after switchover. **RESULTS:** A significant ($p < 0.05$) increase in SI ratio was observed following multiple doses of linear but not macrocyclic agents: mean percentage increase per dose in SI was 0.063% vs -0.034% for DN/MCP, and 0.078% vs 0.004% for GP/CWM ratios. A significant ($p < 0.05$) change of SI trajectory in DN/MCP ratio was demonstrated when switching from linear to macrocyclic agent. There was no difference in SI trajectory between patients who had anticancer therapies and those who did not, DN/MCP $p = 0.740$; GP/BWM $p = 0.694$. **DATA CONCLUSION:** Switching from linear to macrocyclic gadolinium-based

1
2
3 contrast agents seems to halt relative T1 signal increase in deep gray-matter in children.

4
5 Anticancer treatments appeared to have no impact on trajectory of T1 SI.

6 7 8 9 **Keywords**

10
11
12 Contrast agent, gd deposition, brain, pediatrics, mri

13 14 15 **INTRODUCTION**

16
17
18 The first intravenous gadolinium-based contrast agent (GBCA) for MR Imaging was licensed
19
20 globally for clinical use in 1988 (1). Apparent deposition of gadolinium in the brain following
21
22 repeated doses of GBCA was recognized in 2014, by Kanda *et al* (2). The authors reported a
23
24 correlation between increased signal intensity within the dentate nucleus (DN) and globus
25
26 pallidus (GP) and the number of doses of GBCA received.

27
28
29
30 Several studies have shown signal intensity changes in the brains of children exposed
31
32 to repeated doses of GBCAs (3, 4, 13, 5–12). This is important because pediatric patients
33
34 (assuming a normal life expectancy) have a longer period over which neurotoxicity can act or
35
36 become manifest and be more likely to receive further doses of gadolinium throughout their
37
38 lifetime.

39
40
41
42 Relative T1 hyperintensity in the DN has also been attributed to the treatment effects
43
44 of chemotherapy or radiation-therapy (13) A recent study reported changes in signal intensity
45
46 in the DN and GP in children with brain tumors undergoing brain irradiation that are
47
48 independent of the administration of GBCA (14) and another suggests increased R1 values in
49
50 adults undergoing brain irradiation may increase susceptibility to gadolinium deposition (15).

51
52
53
54 The primary hypothesis for this study is that the trajectory of progressive changes in
55
56 relative DN and GP signal intensity in children receiving multiple doses of GBCA for brain
57
58 tumor follow-up will change when the child is switched from a linear to a macrocyclic GBCA.
59
60

1
2
3 Testing of this hypothesis by retrospective analysis has been enabled by a change in
4 institutional GBCA administration policy. Until 2009 pediatric patients at our institution were
5 administered the linear GBCA gadopentetate dimeglumine (Magnevist, Bayer Healthcare,
6 Berlin, Germany) because this was the only contrast agent licensed for use in young children
7 in the UK. In 2009 the macrocyclic agent gadobutrol, (Gadovist, Bayer Healthcare, Berlin,
8 Germany) was licensed in the UK for children over seven years old. In 2012 it was licensed for
9 children of 2 years old and above and in 2015 it was licensed for children less than two years
10 of age (16). Our institution followed these timelines so that where contrast agent was
11 administered the patient would have received either linear or macrocyclic GBCA, depending
12 on the date of the scan and the age of the child. Over the period of the retrospective analysis
13 the MR imagers used for scanning pediatric patients and the basic MRI sequence protocol for
14 pediatric brain tumor evaluation remained unchanged.

15
16
17
18
19
20
21
22
23
24
25
26
27
28
29
30
31
32
33
34
35
36
37
38
39
40
41
42
43
44
45
46
47
48
49
50
51
52
53
54
55
56
57
58
59
60
Given the uncertainty about the relationship between treatment effects on deep gray
matter signal intensity in children receiving multiple doses of GBCA, we test a secondary
hypothesis that children receiving chemotherapy and/or radiation therapy will show a
steeper trajectory of relative T1-weighted signal increases in the DN and GP than children
receiving no active treatment or surgery alone. An exploratory analysis of the effect of GBCA
type (linear or macrocyclic) on relative T1-weighted signal trajectories for these two patient
groups is also conducted.

52 MATERIALS AND METHODS

54
55
56
57
58
59
60
Consent was obtained from the parent/guardian of all participants included in this study for
their clinical data to be collated and analyzed as part of an on-going research study approved
by the UK National Health Service Research Ethics Committee (04/MRE04/41).

1
2
3 Participants were pediatric brain tumor patients treated at the Nottingham University
4 NHS Trust and imaged between 2006 and 2017. Participants were included in the analysis if
5
6 they had undergone MRI with 6 doses or more of either linear GBCA, macrocyclic GBCA or
7
8 both, with an MRI protocol that included an unenhanced axial T1WI sequence and were under
9
10 18 years of age at the time of their first scan. Potential participants were excluded if they had
11
12 a condition known to be associated with abnormal DN or GP signal on MRI; if they had brain
13
14 lesions or surgical resection involving the DN or GP; or if they had previously undergone MRI
15
16 outside our institution with a GBCA that could not be identified. Individual MR scans were
17
18 excluded from the analysis if they originated from other institutions, did not include an
19
20 unenhanced axial T1WI and if degraded by either patient motion or flow artifacts obscuring
21
22 the anatomical structure of interest. A history of chemotherapy or radiation therapy
23
24 administration was obtained from the clinical notes. Screening of the patients prior to their
25
26 MRI scan should have ensured that none of the patients had renal impairment; however
27
28 nuclear medicine and blood test results were also checked. Medical records were checked to
29
30 identify any other reasons for exclusion as were their series of MRI scans.
31
32
33
34
35
36
37
38
39

40 Thirty five patients were analyzed in total. For the purposes of analysis, 3 participant
41
42 sub-groups were defined based on GBCA administration: (1) The 'linear-only' group includes
43
44 all those who received 6 or more doses of gadopentetate dimeglumine, but the analyzes
45
46 referring to this group include only the signal intensity ratios prior to their first dose of
47
48 gadobutrol (if given); (2) the 'macrocyclic-only group' includes participants who only received
49
50 gadobutrol (i.e. no exposure to gadopentetate dimeglumine) and received 6 or more doses
51
52 of gadobutrol; (3) the 'switchover group' included those who received 6 or more doses of
53
54 gadopentetate dimeglumine followed by 3 or more doses of gadobutrol (and could therefore
55
56
57
58
59
60

1
2
3 include patients already in the linear-only group). Evolution of the different groups is
4
5 described in Figure 1.
6
7
8
9

10 ***MR Imaging Protocol***

11
12 Scanning was performed on three scanners: an Intera 1.5 Tesla (Philips Healthcare, Best, The
13 Netherlands); an Achieva 3 Tesla (Philips Healthcare, Best, The Netherlands) and a Signa Excite
14
15 1.5 Tesla (General Electric Healthcare, Chicago, IL, USA). Our institution uses a set protocol
16
17 which was employed to scan all pediatric brain tumor patients throughout the study period
18
19 to maintain consistent parameters. Parameters for the axial T1WI spin echo sequence used
20
21 for analysis are shown in Table 1. The GBCA dose was calculated strictly as per the
22
23 manufacturers' recommendation: 0.2ml (0.002mmol/ml) per kg of weight for gadopentetate
24
25 dimeglumine and 0.1ml (1.0 mmol/ml) per kg for gadobutrol. The GBCA type and dose at each
26
27 time point were recorded in and collected from our institution's radiology information
28
29 system.
30
31
32
33
34
35
36
37
38
39

40 ***Image Analysis***

41
42 Image viewing and analysis was performed using the GE Centricity Universal Viewer V6.0 PACS
43
44 system (GE Healthcare, Chicago, IL, USA). The axial T1WI sets were scored for quality using a
45
46 scoring range of 0 – 3. Images that were scored 0 were rejected from analysis. A second
47
48 independent reviewer (neuroradiologist with 14 years' experience, RD) reviewed all included
49
50 image slices to confirm that the images were appropriate for inclusion in the analysis. Regions
51
52 of Interest (ROIs) were drawn manually by SR on the unenhanced axial T1WI, supplemented
53
54 by reference to other T2WI to aid structure identification if required. The middle cerebellar
55
56 peduncle (MCP) and the cerebral white matter (CWM) were selected as control regions for
57
58
59
60

1
2
3 ratio calculations based on the relative lack of evidence of gadolinium deposition in white
4 matter compared to deep gray matter (17–19). An elliptical ROI was placed on the DN and
5
6 GP. ROIs were standardized to between 0.3 and 0.6 cm in size depending on the size of the
7
8 anatomy. Training and supervision by a neuroradiologist with 30 years' experience, TJ,
9
10 assisted in the identification of the individual structures and ensured accurate placement of
11
12 ROIs. An example of the ROIs drawn can be seen in Figure 2.
13
14
15
16

17
18 Ratios of mean signal intensity were calculated for the DN relative to the MCP
19
20 (DN/MCP) and for the GP relative to the CWM (GP/CWM). Intensity ratios were used to
21
22 reduce confounding effects from the variation in data acquisition across different scanners
23
24 and field strengths. For each subject, the ratios were normalized to their respective ratio at
25
26 the first scan, and the gradient of the relative signal intensity ratio slope as the number of
27
28 doses increased was calculated from linear regression (Microsoft Excel 2010, Redmond, WA,
29
30 USA).
31
32
33
34

35 For the Switchover group, ratios were calculated for before, and after contrast agent
36
37 switch. Gadopentetate dimeglumine ratios at each time point were normalized by their first
38
39 scan values, and gadobutrol ratios by the last unenhanced T1WI, which was acquired
40
41 immediately prior to the first dose of gadobutrol.
42
43
44
45
46

47 **Statistical Analysis**

48
49 Statistical analysis was performed using SPSS version 21 (IBM SPSS Statistics for Windows,
50
51 Version 21.0. Armonk, NY, USA). A one-sample t-tests or Mann-Whitney U tests, depending
52
53 on normality, were performed to test for slope gradients differing from zero. Group
54
55 comparisons of signal intensity ratio slope gradients were made using independent samples
56
57 t-tests. In the switchover group, differences between slopes before and after changing the
58
59
60

1
2
3 contrast agent were compared using paired sample t-tests. P values below 0.05 were
4
5 considered statistically significant.
6
7
8
9

10 RESULTS

11
12 Of the 65 patients identified as suitable subjects, whose parents / care takers had consented
13 to data collection, 35 individuals fulfilled the inclusion criteria for this analysis and 28 were
14 excluded based on the exclusion criteria. A further two potential participants had individual
15 scans without unenhanced T1WIs which put them below the required number of scans for
16 inclusion. Out of the 35 patients selected, it was possible to analyze both the DN and GP in 18
17 subjects, only DN in 8 subjects and only GP in 9 subjects. This was because some had
18 lesions/surgery in one area but not the other. Details of the 35 included participants are
19 shown in Table 2.
20
21
22
23
24
25
26
27
28
29
30
31

32 A subgroup 18 patients that were scanned more 3 or more times each at 1.5 and 3
33 Tesla using the same contrast agent. The agreement of ratios calculated from 1.5 Tesla images
34 only compared to those calculated from 3 Tesla images only can be seen in the Bland-Altman
35 plot of Figure 3.
36
37
38
39
40
41

42 For the whole group, positive slope gradients were observed with the distribution of
43 slope gradients varying significantly from 'no slope' for both DN/MCP (mean \pm standard
44 deviation (SD) = 0.002 \pm 0.005, $p=0.026$, $t=2.360$) and GP/CWM, (mean \pm SD =0.004 \pm 0.005 p
45 <0.005, $t=4.271$). The mean percentage increase in signal intensity per dose across the group
46 was 0.013% \pm 0.043 (SD), for the DN/MCP ratio and 0.027% \pm 0.041 for the GP/CWM ratio.
47
48
49
50
51
52
53

54 The data was then split into the 'linear only' and 'macrocytic only' groups. Analysis of
55 the linear group showed positive slope gradients with the distribution of slope gradients
56 varying significantly from 'no slope' for both DN/MCP (mean \pm SD = 0.007 \pm 0.004, $p<0.005$, t
57
58
59
60

1
2
3 =8.618) and GP/CWM ($p < 0.005$, $t = 6.07$) (see Figure 4a for an example of a linear group
4 patient). The mean percentage increase per dose in signal intensity across the group was
5
6 0.063% \pm 0.044 for the DN/MCP ratio, and 0.078% \pm 0.082.
7
8
9

10 In contrast, the macrocyclic group showed no clear slope, confirmed by the lack of
11 significant difference from the 'no-slope' condition in the one-sample t-test for either
12
13 DN/MCP ($p = 0.104$, $t = -1.870$) or GP/CWM ($p = 0.546$, $t = 0.628$) (see Figure 4b for an example
14 of a macrocyclic group patient). The mean percentage increase per dose in signal intensity
15 across the group was -0.034% \pm 0.051 for the DN/MCP ratio and 0.004% \pm 0.040 for the
16
17 GP/CWM.
18
19
20
21
22
23
24

25 For the whole group an independent samples t-test demonstrated no significant
26 difference in the T1WI signal intensity ratio slope gradient between those who did and those
27 who did not receive chemotherapy or radiation therapy, for neither DN/MCP or GP/CWM
28 ratios (DN/MCP $p = 0.740$, $t = -0.337$; GP/BWM $p = 0.694$, $t = -0.399$). The percentage increase
29 per dose for the whole group was 0.011% \pm 0.043 for the DN/CWM and 0.024% \pm 0.043. When
30 the analysis was repeated for the linear group separately, the independent Mann-Whitney U
31 test again showed no significant difference between those who did and those who did not
32 receive chemotherapy and/or radiation therapy (linear group: DN/MCP $p = 0.246$, GP/CWM p
33 =0.733; macrocyclic group: DN/MCP $p = 0.385$, GP/CWM $p = 0.703$). For the patients who
34 received no therapy and were in the linear group the percentage increase per dose was
35 0.092% \pm 0.035 for the DN/CWM and 0.137% \pm 0.113 for the GP/CWM ratio. Those who had
36 received therapy and were in the linear group showed a percentage increase per dose of
37 0.044% \pm 0.039 for the DN/CWM ratio and 0.045% \pm 0.030 for the GP/CWM ratios.
38
39
40
41
42
43
44
45
46
47
48
49
50
51
52
53
54
55
56

57 For the Switchover group, the paired samples t-test showed a significant difference in
58 the distribution of slope gradients before and after the switch from linear to macrocyclic for
59
60

1
2
3 DN/MCP ($p = 0.014$), with the plot demonstrating an apparent reversal from increasing to
4 decreasing trajectory of ratios at the point of switch (Figure 5a). No significant difference was
5
6 seen in the distribution of slope gradients before and after the switch for GP/CWM ($p = 0.680$),
7
8 however inspection of the plot reveals a plateauing of the trajectory of ratios at the point of
9
10 the switch (Figure 5b) but a noticeably larger standard deviation.
11
12
13
14
15
16
17

18 **DISCUSSION**

19
20 We hypothesized that the trajectory of progressive changes in relative DN and GP signal
21 intensity in children receiving multiple doses of GBCA will change when switching from a
22 linear to a macrocyclic GBCA. This hypothesis is supported with regard to the DN/MCP ratios,
23 where a significant difference in slope gradients was identified in children before and after
24 the switchover. Two other studies in adults have evaluated serial linear and subsequent
25 macrocyclic doses in the same patients with similar findings (20, 21). Although no statistically
26 significant change in trajectory was found for the GP/CWM ratios before and after the
27 switchover, the plot of mean values shows a plateauing of the trajectory after the switch to
28 macrocyclic GBCA.
29
30
31
32
33
34
35
36
37
38
39
40
41

42 Our data for the separate linear and macrocyclic groups also demonstrates different
43 trajectories of signal change; the linear group showed positive slope gradients in keeping with
44 presumed gadolinium deposition at both sites (DN and GP), whereas the macrocyclic group
45 did not. The findings are in line with the majority of recent literature identifying increase in
46 T1-weighted hyperintensity in the GP and DN after serial doses of linear GBCAs but not
47 macrocyclic GBCAs (2, 4–7, 11, 13, 22, 23).
48
49
50
51
52
53
54
55
56

57 A notable finding was the negative slope gradient for DN/MCP ratios in the switchover
58 group after the change to macrocyclic GBCA. This finding agrees with the two studies in adults
59
60

1
2
3 that made use of a change in the type of contrast agent (20, 21). It is difficult to specify the
4
5 reason for this decline. It has been demonstrated that macrocyclic GBCAs also deposit in the
6
7 brain but to a lesser extent than linear agents (24) and few studies have reliably demonstrated
8
9 signal intensity ratio increases in the macrocyclic group (25). Studies in rats demonstrated
10
11 that gadolinium found in the rat brain after linear and macrocyclic contrast administration
12
13 was in three distinct forms, intact GBCA, soluble macromolecules and in insoluble form, the
14
15 intact GBCA being identified as macrocyclic contrast (26, 27). This suggests that the reason
16
17 for the decline in signal intensity ratio therefore could relate to a steady washout of the linear
18
19 gadolinium, which has been demonstrated in rats (28). Changes to the binding of the
20
21 gadolinium; dechelation and precipitation of the gadolinium is another consideration (29).
22
23 Alternatively, this decline in ratio values could be due to a disproportionate increase in signal
24
25 intensity of the control ROI used in the ratio calculation, the MCP. This latter point highlights
26
27 a problem with much of the existing literature that uses signal intensity ratios; i.e. the
28
29 assumption that the control ROI is not subject to gadolinium deposition. For example, several
30
31 previous studies use the pons as a control ROI for the DN (2, 7, 8, 10, 11, 17, 23), but it is
32
33 recognized that the pons, which contains many gray matter nuclei, is a site of gadolinium
34
35 deposition itself (13). Our data do not allow isolation of the separate effects of potential
36
37 gadolinium clearance from the DN and gadolinium deposition in the MCP to be disentangled,
38
39 for which quantitative T1-mapping would be required.
40
41
42
43
44
45
46
47
48
49

50 The values for DN/MCP and GP/CWM increased with GBCA dose number for our
51
52 pediatric cohort as a whole, which broadly confirms the findings of other groups studying
53
54 pediatric populations (3, 4, 6, 8–14). However, we found no significant difference in the
55
56 trajectory of signal intensity ratio increase between children treated with chemotherapy and
57
58 radiation therapy and those who received no treatment or surgery alone. These findings are
59
60

1
2
3 in line with another study in adults and children which found that radiation therapy had no
4
5 impact on signal intensity change (5), but conflict with a recent study showing that signal
6
7 intensity changes in the DN and GP occur in patients with brain tumors undergoing brain
8
9 irradiation independent of GBCA administration (14).
10
11
12

13 Our analysis is limited by a relatively small sample size, particularly when the sample
14
15 is split into groups for analysis. It would not be ethical to conduct a prospective trial testing
16
17 the relative gadolinium deposition rates in children following multiple GBCA doses, and hence
18
19 we were limited to conducting a retrospective analysis. One strength of our study is that
20
21 during the study period (2006 to 2017) the MRI scanners used at our institution for pediatric
22
23 brain tumor evaluation, and the basic MRI sequence protocol, did not change which provides
24
25 continuity in the dataset. Although patients were scanned on both 1.5 and 3 Tesla scanners,
26
27 the use of signal intensity ratios removes confounding effects.
28
29
30
31

32 To date, brain deposition of gadolinium has not been shown to be harmful in the
33
34 majority of patients and the long-term consequences are unknown. Our data do not allow us
35
36 to explore the consequences of presumed gadolinium deposition for the children involved.
37
38 Apart from the fact that we do not have quantitative cognitive or neurological function scores
39
40 for these children, this group is likely to carry a significant neurological and cognitive burden
41
42 due to their complex neurosurgical and treatment histories. In addition, maturation of brain
43
44 structure and function occurs throughout childhood and hence gadolinium deposition may
45
46 affect the developing brain differently to a mature adult brain. However, it is important that
47
48 the consequences of gadolinium deposition are studied prospectively as detrimental effects
49
50 could be greater in the developing brain that is undergoing rapid structural and functional
51
52 maturation compared to the mature adult brain.
53
54
55
56
57
58
59
60

1
2
3 In conclusion our analyzes confirm previous reports that T1 signal increase occurs in
4 the deep gray matter following repeated doses of linear GBCA but not macrocyclic agents.
5
6 Furthermore, we demonstrate that switching from linear to macrocyclic GBCAs halts the
7
8 relative T1 signal increase in deep gray matter of children with brain tumors. We found no
9
10 evidence of an independent effect of chemotherapy or radiation therapy on the trajectory of
11
12
13
14
15 T1 signal increase.
16
17
18
19
20
21
22
23
24
25
26
27
28
29
30
31
32
33
34
35
36
37
38
39
40
41
42
43
44
45
46
47
48
49
50
51
52
53
54
55
56
57
58
59
60

FOR PEER REVIEW ONLY

References

1. Pierre VC, Allen MJ, Caravan P: Contrast agents for MRI: 30+ years and where are we going? *J Biol Inorg Chem* 2015; 19:127–131.
2. Kanda T, Ishii K, Kawaguchi H, Kitajima K, Takenaka D: High signal intensity in the dentate nucleus and globus pallidus on unenhanced T1-weighted MR images: relationship with increasing cumulative dose of a gadolinium-based contrast material. *Radiology* 2014; 270:834–41.
3. Morcos SK: Extracellular gadolinium contrast agents: Differences in stability. *Eur J Radiol* 2008; 66:175–179.
4. Miller JH, Hu HH, Pokorney A, Cornejo P, Towbin R: MRI Brain Signal Intensity Changes of a Child During the Course of 35 Gadolinium Contrast Examinations. *Pediatrics* 2015; 136:e1637-40.
5. Adin ME, Kleinberg L, Vaidya D, Zan E, Mirbagheri S, Yousem DM: Hyperintense Dentate Nuclei on T1-Weighted MRI: Relation to Repeat Gadolinium Administration. *AJNR Am J Neuroradiol* 2016; 36:1859–1865.
6. Roberts DR, Chatterjee AR, Yazdani M, et al.: Pediatric Patients Demonstrate Progressive T1-Weighted Hyperintensity in the Dentate Nucleus following Multiple Doses of Gadolinium-Based Contrast Agent. *AJNR Am J Neuroradiol* 2016; 37:2340–47.
7. Hu HH, Pokorney A, Towbin RB, Miller JH: Increased signal intensities in the dentate nucleus and globus pallidus on unenhanced T1-weighted images : evidence in children undergoing multiple gadolinium MRI exams. *Pediatr Radiol* 2016; 46:1590–1598.
8. Tibussek D, Rademacher C, Caspers J, et al.: Gadolinium Brain Deposition after Macrocytic Gadolinium Administration: A Pediatric Case- Control Study. *Radiology* 2017; 285:223–230.

- 1
2
3 9. Flood TF, Stence N V, Maloney JA, Mirsky DM: Pediatric Brain : Repeated Exposure to
4
5 Linear Gadolinium-based Contrast Material Is Associated with Increased Signal Intensity at
6
7 Unenhanced T1- weighted MR Imaging. *Radiology* 2017; 282:222–228.
8
9
- 10
11 10. Rossi Espagnet MC, Bernardi B, Pasquini L, Figà-Talamanca L, Tomà P, Napolitano A:
12
13 Signal intensity at unenhanced T1-weighted magnetic resonance in the globus pallidus and
14
15 dentate nucleus after serial administrations of a macrocyclic gadolinium-based contrast
16
17 agent in children. *Pediatr Radiol* 2017; 47:1345–1352.
18
19
- 20
21 11. Radbruch A, Haase R, Kickingereeder P, et al.: Pediatric Brain : No Increased Signal
22
23 Intensity in the Dentate Nucleus on Unenhanced T1-weighted MR Images after Consecutive
24
25 Exposure to a Macrocyclic Gadolinium-based Contrast Agent. *Radiology* 2017; 283:828–836.
26
27
- 28
29 12. Young J, Orosz I, Franke M, et al.: Gadolinium deposition in the paediatric brain: T1-
30
31 weighted hyperintensity within the dentate nucleus following repeated gadolinium-based
32
33 contrast agent administration. *Clin Radiol* 2018; 73:290–295.
34
35
- 36
37 13. Kasahara S, Miki Y, Kanagaki M, et al.: Hyperintense Dentate Nucleus on Unenhanced
38
39 T1-weighted MR Images Is Associated with a History of Brain Irradiation. *Radiology* 2011;
40
41 258:222–8.
42
43
- 44
45 14. Tamrazi B, Nguyen B, Liu C, et al.: Changes in Signal Intensity of the Dentate Nucleus and
46
47 Globus Pallidus in Pediatric Patients: Impact of Brain Irradiation and Presence of Primary
48
49 Brain Tumors Independent of Linear Gadolinium- based Contrast Agent Administration.
50
51 *Radiology* 2018; 287:452–460.
52
53
- 54
55 15. Lim WH, Choi SH, Yoo R, et al.: Does radiation therapy increase gadolinium accumulation
56
57 in the brain ?: Quantitative analysis of T1 shortening using R1 relaxometry in glioblastoma
58
59 multiforme patients. *PLoS One* 2018; 13.
60
16. Schwartz GJ, Work DF: Measurement and Estimation of GFR in Children and Adolescents.

1
2
3 *Clin J Am Soc Nephrol* 2009; 4:1832–1843.

4
5
6 17. McDonald RJ, McDonald JS, Kallmes DF, et al.: Intracranial Gadolinium Deposition after
7
8 Contrast-enhanced MR Imaging. *Radiology* 2015; 275:772–82.

9
10
11 18. Murata N, Murata K, Gonzalez-cuyar LF, Maravilla KR: Gadolinium tissue deposition in
12
13 brain and bone. *Magn Reson Imaging* 2016; 34:1359–1365.

14
15
16 19. Kanda T, Fukusato T, Matsuda M, et al.: Gadolinium-based Contrast Agent Accumulates
17
18 in the Brain Even in Subjects without Severe Renal Dysfunction: Evaluation of Autopsy Brain
19
20 Specimens with Inductively Coupled Plasma Mass Spectroscopy. *Radiology* 2015; 276:228–
21
22 32.

23
24
25 20. Radbruch A, Weberling LD, Kieslich PJ, et al.: Intraindividual Analysis of Signal Intensity
26
27 Changes in the Dentate Nucleus After Consecutive Serial Applications of Linear and
28
29 Macrocytic Gadolinium-Based Contrast Agents. *Invest Radiol* 2016; 51:683–690.

30
31
32 21. Behzadi A, Farooq Z, Zhao Y, Shih G, Prince M: Dentate Nucleus Signal Intensity Decrease
33
34 on T1-weighted MR Images after Switching from Gadopentetate Dimeglumine to
35
36 Gadobutrol. *Radiology* 2018; 287:816–823.

37
38
39 22. Radbruch A, Weberling L, Kieslich P, et al.: Gadolinium Retention in the Dentate Nucleus
40
41 and Globus Pallidus Is Dependent on the Class of Contrast Agent. *Radiology* 2015; 275:783–
42
43 791.

44
45
46 23. Eisele P, Alonso A, Szabo K, et al.: Lack of increased signal intensity in the dentate
47
48 nucleus after repeated administration of a macrocytic contrast agent in multiple sclerosis.
49
50 *Medicine (Baltimore)* 2016; 95.

51
52
53 24. Murata N, Gonzalez-Cuyar L, Murata K, et al.: Macrocytic and Other Non – Group 1
54
55 Gadolinium Contrast Agents Deposit Low Levels of Gadolinium in Brain and Bone Tissue
56
57 Preliminary Results From 9 Patients With Normal Renal Function. *Invest Radiol* 2016;
58
59
60

1
2
3 51:447–53.
4

5 25. Stojanov DA, Aracki-trenkic A, Vojinovic S, Benedeto-stojanov D: Increasing signal
6 intensity within the dentate nucleus and globus pallidus on unenhanced T1W magnetic
7 resonance images in patients with relapsing-remitting multiple sclerosis : correlation with
8 cumulative dose of a macrocyclic gadolinium-based contrast ag. *Eur Radiol* 2016; 26:807–
9 815.
10
11
12
13
14
15
16

17 26. Frenzel T, Apte C, Jost G, Schöckel L, Lohrke J, Pietsch H: Quantification and Assessment
18 of the Chemical Form of Residual Gadolinium in the Brain After Repeated Administration of
19 Gadolinium-Based Contrast Agents Comparative Study in Rats. *Invest Radiol* 2017; 52:18–20.
20
21
22
23

24 27. Robert P, Fingerhut S, Factor MSC, Vives V, Letien BSJ: One-year Retention of
25 Gadolinium in the Brain : Comparison of Gadodiamide and Gadoterate Meglumine in a
26 Rodent Model. *Radiology* 2018; 288:424–433.
27
28
29

30 28. Smith APL, Marino M, Crowder JM, et al.: Clearance of Gadolinium from the Brain with
31 No Pathologic Effect after Repeated Administration of Gadodiamide in Healthy Rats: An
32 Analytical and Histologic Study. *Radiology* 2017; 282:743–751.
33
34
35
36
37
38

39 29. Gianolio E, Bardini P, Arena F, et al.: Gadolinium Retention in the Rat Brain : Assessment
40 of the Amounts of Insoluble Gadolinium-containing Species and Intact Gadolinium
41 Complexes after Repeated Administration of Gadolinium-based Contrast Agents. *Radiology*
42 2017; 285:839–849.
43
44
45
46
47
48
49
50
51
52
53
54
55
56
57
58
59
60

1. Pierre VC, Allen MJ, Caravan P. Contrast agents for MRI: 30+ years and where are we going? *J Biol Inorg Chem*. 2015;19(2):127-131.
2. Kanda T, Ishii K, Kawaguchi H, et al. High signal intensity in the dentate nucleus and globus pallidus on unenhanced T1-weighted MR images: relationship with increasing cumulative dose of a gadolinium-based contrast material. *Radiology*. 2014;270(3):834-841.
3. Morcos SK. Extracellular gadolinium contrast agents: Differences in stability. *Eur J Radiol*. 2008;66:175-179.
4. Miller JH, Hu HH, Pokorney A, et al. MRI Brain Signal Intensity Changes of a Child During the Course of 35 Gadolinium Contrast Examinations. *Pediatrics*. 2015;136(6):e1637-40.
5. Adin ME, Kleinberg L, Vaidya D, et al. Hyperintense Dentate Nuclei on T1-Weighted MRI: Relation to Repeat Gadolinium Administration. *AJNR Am J Neuroradiol*. 2016;36(10):1859-1865.
6. Roberts DR, Chatterjee AR, Yazdani M, et al. Pediatric Patients Demonstrate Progressive T1-Weighted Hyperintensity in the Dentate Nucleus following Multiple Doses of Gadolinium-Based Contrast Agent. *AJNR Am J Neuroradiol*. 2016;37:2340-2347.
7. Hu HH, Pokorney A, Towbin RB, et al. Increased signal intensities in the dentate nucleus and globus pallidus on unenhanced T1-weighted images : evidence in children undergoing multiple gadolinium MRI exams. *Pediatr Radiol*. 2016;46:1590-1598.
8. Tibussek D, Rademacher C, Caspers J, et al. Gadolinium Brain Deposition after Macrocyclic Gadolinium Administration: A Pediatric Case- Control Study. *Radiology*. 2017;285(1):223-230.
9. Flood TF, Stence N V, Maloney JA, et al. Pediatric Brain : Repeated Exposure to

- 1
2
3 Linear Gadolinium-based Contrast Material Is Associated with Increased Signal
4 Intensity at Unenhanced T1- weighted MR Imaging. *Radiology*. 2017;282(1):222-228.
5
6
7 10. Rossi Espagnet MC, Bernardi B, Pasquini L, et al. Signal intensity at unenhanced T1-
8 weighted magnetic resonance in the globus pallidus and dentate nucleus after serial
9 administrations of a macrocyclic gadolinium-based contrast agent in children. *Pediatr*
10 *Radiol*. 2017;47:1345-1352.
11
12
13
14
15 11. Radbruch A, Haase R, Kickingereder P, et al. Pediatric Brain : No Increased Signal
16 Intensity in the Dentate Nucleus on Unenhanced T1-weighted MR Images after
17 Consecutive Exposure to a Macrocyclic Gadolinium-based Contrast Agent. *Radiology*.
18 2017;283(3):828-836.
19
20
21
22
23
24 12. Young J, Orosz I, Franke M, et al. Gadolinium deposition in the paediatric brain: T1-
25 weighted hyperintensity within the dentate nucleus following repeated gadolinium-
26 based contrast agent administration. *Clin Radiol*. 2018;73(3):290-295.
27
28
29
30
31 13. Kasahara S, Miki Y, Kanagaki M, et al. Hyperintense Dentate Nucleus on
32 Unenhanced T1-weighted MR Images Is Associated with a History of Brain Irradiation.
33 *Radiology*. 2011;258(1):222-228.
34
35
36
37 14. Tamrazi B, Nguyen B, Liu C, et al. Changes in Signal Intensity of the Dentate Nucleus
38 and Globus Pallidus in Pediatric Patients: Impact of Brain Irradiation and Presence of
39 Primary Brain Tumors Independent of Linear Gadolinium- based Contrast Agent
40 Administration. *Radiology*. 2018;287(2):452-460.
41
42
43
44
45 15. Lim WH, Choi SH, Yoo R, et al. Does radiation therapy increase gadolinium
46 accumulation in the brain?: Quantitative analysis of T1 shortening using R1
47 relaxometry in glioblastoma multiforme patients. *PLoS One*. 2018;13(2).
48
49
50
51 16. Schwartz GJ, Work DF. Measurement and Estimation of GFR in Children and
52 Adolescents. *Clin J Am Soc Nephrol*. 2009;4:1832-1843.
53
54
55
56 17. Mcdonald RJ, Mcdonald JS, Kallmes DF, et al. Intracranial Gadolinium Deposition
57 after Contrast-enhanced MR Imaging. *Radiology*. 2015;275(3):772-782.
58
59
60 18. Murata N, Murata K, Gonzalez-cuyar LF, et al. Gadolinium tissue deposition in brain

- 1
2
3 and bone. *Magn Reson Imaging*. 2016;34(10):1359-1365.
4
5
6 19. Kanda T, Fukusato T, Matsuda M, et al. Gadolinium-based Contrast Agent
7 Accumulates in the Brain Even in Subjects without Severe Renal Dysfunction:
8 Evaluation of Autopsy Brain Specimens with Inductively Coupled Plasma Mass
9 Spectroscopy. *Radiology*. 2015;276(1):228-232.
10
11
12
13 20. Radbruch A, Weberling LD, Kieslich PJ, et al. Intraindividual Analysis of Signal
14 Intensity Changes in the Dentate Nucleus After Consecutive Serial Applications of
15 Linear and Macrocyclic Gadolinium-Based Contrast Agents. *Invest Radiol*.
16 2016;51(11):683-690.
17
18
19
20
21
22 21. Behzadi A, Farooq Z, Zhao Y, et al. Dentate Nucleus Signal Intensity Decrease on
23 T1-weighted MR Images after Switching from Gadopentetate Dimeglumine to
24 Gadobutrol. *Radiology*. 2018;287(3):816-823.
25
26
27
28
29 22. Radbruch A, Weberling L, Kieslich P, et al. Gadolinium Retention in the Dentate
30 Nucleus and Globus Pallidus Is Dependent on the Class of Contrast Agent.
31 *Radiology*. 2015;275(3):783-791.
32
33
34
35 23. Eisele P, Alonso A, Szabo K, et al. Lack of increased signal intensity in the dentate
36 nucleus after repeated administration of a macrocyclic contrast agent in multiple
37 sclerosis. *Medicine (Baltimore)*. 2016;95(39).
38
39
40
41 24. Murata N, Gonzalez-Cuyar L, Murata K, et al. Macrocyclic and Other Non – Group 1
42 Gadolinium Contrast Agents Deposit Low Levels of Gadolinium in Brain and Bone
43 Tissue Preliminary Results From 9 Patients With Normal Renal Function. *Invest*
44 *Radiol*. 2016;51(7):447-453.
45
46
47
48
49 25. Stojanov DA, Aracki-trenkic A, Vojinovic S, et al. Increasing signal intensity within the
50 dentate nucleus and globus pallidus on unenhanced T1W magnetic resonance
51 images in patients with relapsing-remitting multiple sclerosis : correlation with
52 cumulative dose of a macrocyclic gadolinium-based contrast ag. *Eur Radiol*.
53 2016;26:807-815.
54
55
56
57
58
59
60 26. Frenzel T, Apte C, Jost G, et al. Quantification and Assessment of the Chemical Form

- 1
2
3 of Residual Gadolinium in the Brain After Repeated Administration of Gadolinium-
4 Based Contrast Agents Comparative Study in Rats. *Invest Radiol.* 2017;52(7):18-20.
5
6
7 27. Robert P, Fingerhut S, Factor MSC, et al. One-year Retention of Gadolinium in the
8 Brain : Comparison of Gadodiamide and Gadoterate Meglumine in a Rodent Model.
9
10
11 *Radiology.* 2018;288(2):424-433.
12
13 28. Smith APL, Marino M, Crowder JM, et al. Clearance of Gadolinium from the Brain with
14 No Pathologic Effect after Repeated Administration of Gadodiamide in Healthy Rats:
15 An Analytical and Histologic Study. *Radiology.* 2017;282(3):743-751.
16
17
18 29. Gianolio E, Bardini P, Arena F, et al. Gadolinium Retention in the Rat Brain :
19 Assessment of the Amounts of Insoluble Gadolinium-containing Species and Intact
20 Gadolinium Complexes after Repeated Administration of Gadolinium-based Contrast
21 Agents. *Radiology.* 2017;285(3):839-849.
22
23
24
25
26
27
28
29
30
31
32
33
34
35
36
37
38
39
40
41
42
43
44
45
46
47
48
49
50
51
52
53
54
55
56
57
58
59
60

Tables

Table 1: Parameters for axial T1WI spin echo imaging

Imager	Field Strength (Tesla)	NS A	Matrix	Slice thickness (mm)	Flip angle (°)	FOV (mm)	TR (ms)	TE (ms)
Philips Intera	1.5	2	205x256	4	68 - 95	230-250	500 – 900	10-25
Philips Achieva	3	1	205x256	4	68 - 95	230-250	500 – 900	10-25
GE Signa Excite	1.5	2	224x320	4	68 - 95	230-250	500 – 900	10-25

TR = repetition time; TE = echo time; NSA = number of signal averages; FOV = field of view

Table 2: Characteristics of the participants included in the analysis.

	Total	Group		
		Magnevist	Gadovist	Switchover
Number of participants	35	25	10	13
Age [years] at 1 st scan – mean ± SD [range]	8.13 ±4.64 [0.5-17.0]	6.50 ±4.12 [0.5-14.0]	12.30 ±3.10 [8.0-17.0]	7.41 ±3.96 [0.75-14.0]
Age [years] at switchover from Magnevist to Gadovist mean ± SD [range]	N/A	N/A	N/A	14.0 ± 3.5 [6-21]
Male/female	16/19	10/15	6/4	6/7
Number of doses - mean ± S.D [range]	15.48 ±5.96 [7-32]	17.44 ±5.82 [9-32]	10.60 ±2.54 [7-16]	19 ±5.82 [11-32]
Chemo/radiation therapy	n=21	n=14	n=7	N/A
No chemo/radiation therapy	n=14	n=11	n=3	N/A
DN/MCP	n=26	n=18	n=8	n=10
GP/CWM	n=27	n=17	n=10	n=8

SD = standard deviation, DN = dentate nucleus, GP = globus pallidus, MCP = middle cerebellar peduncle, CWM = cerebral white matter.

1
2
3
4
5
6
7
8
9
10
11
12
13
14
15
16
17
18
19
20
21
22
23
24
25
26
27
28
29
30
31
32
33
34
35
36
37
38
39
40
41
42
43
44
45
46
47
48
49
50
51
52
53
54
55
56
57
58
59
60

FOR PEER REVIEW ONLY

Figure Legends

Figure 1- Flow chart showing patient group numbers as derived from the exclusion process, the number of scans analyzed and rejected and the patients' diagnoses. DN = Dentate Nucleus, GP = Globus Pallidus.

Figure 2 – Examples of region of interest (ROI) placement for (a) right dentate nucleus (b) right middle cerebellar peduncle, (c) right globus pallidus, (d) cerebral white matter. All ROIs were placed on pre-contrast axial T1-weighted images.

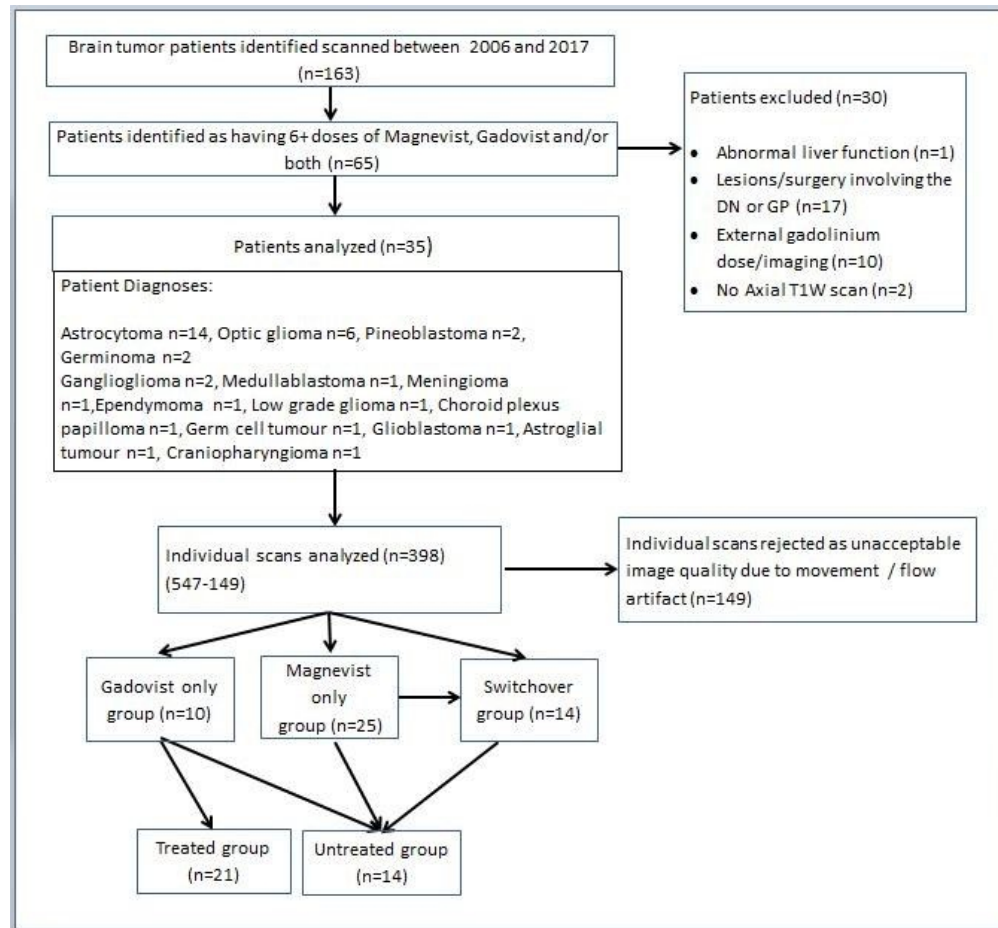
Figure 3 – Bland-Altman plot comparing signal intensity ratio slope gradients for patients that were scanned more 3 or more times each at 1.5 and 3 Tesla using the same contrast agent. Apart from 2 outliers, all repeated measurements are within the 95% limits of agreement, and most present very small differences when measured with either a 1.5 or a 3 Tesla scanner.

Figure 4 – Individual subject data for relative globus pallidus (GP) / cerebral white matter (CWM) T1 signal intensity ratios for (a) a patient from the linear group and (b) a patient from the macrocyclic group. DN/MCP and GP/CWM ratios for each dose are expressed relative to the respective values derived from the unenhanced T1-weighted image prior to the first dose of gadolinium based contrast agent (GBCA).

Figure 5 – Group mean values (n=18) for each dose and fitted slopes from the switchover group for the relative (a) dentate nucleus (DN) / middle cerebellar peduncle (MCP) and (b)

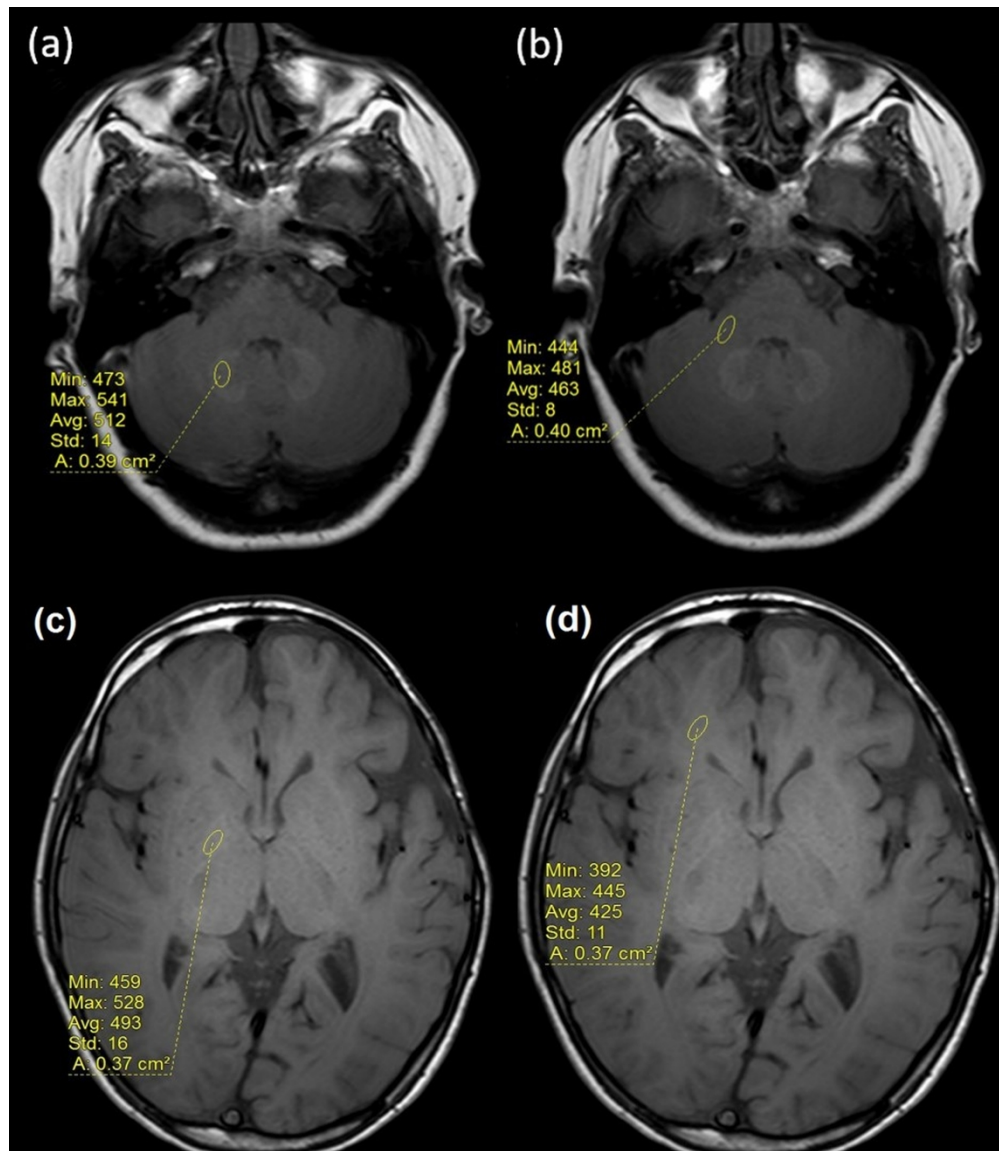
1
2
3 globus pallidus (GP) / cerebral white matter (CWM) T1 signal intensity ratios before (dashed
4 line) and after (dash-dot line) the switch from linear to macrocyclic. For each patient, the
5 intensity ratios of the linear group are normalized by the ratio of the last linear contrast
6 agent scan, and macrocyclic ratios by the ratio of their first macrocyclic scan, so that both
7 those scans are plotted at (0,1). The gray area represents the standard deviation around the
8 mean values.
9
10
11
12
13
14
15
16
17
18
19
20
21
22
23
24
25
26
27
28
29
30
31
32
33
34
35
36
37
38
39
40
41
42
43
44
45
46
47
48
49
50
51
52
53
54
55
56
57
58
59
60

FOR PEER REVIEW ONLY



Flow chart showing patient group numbers as derived from the exclusion process, the number of scans analyzed and rejected and the patients' diagnoses. DN = Dentate Nucleus, GP = Globus Pallidus.

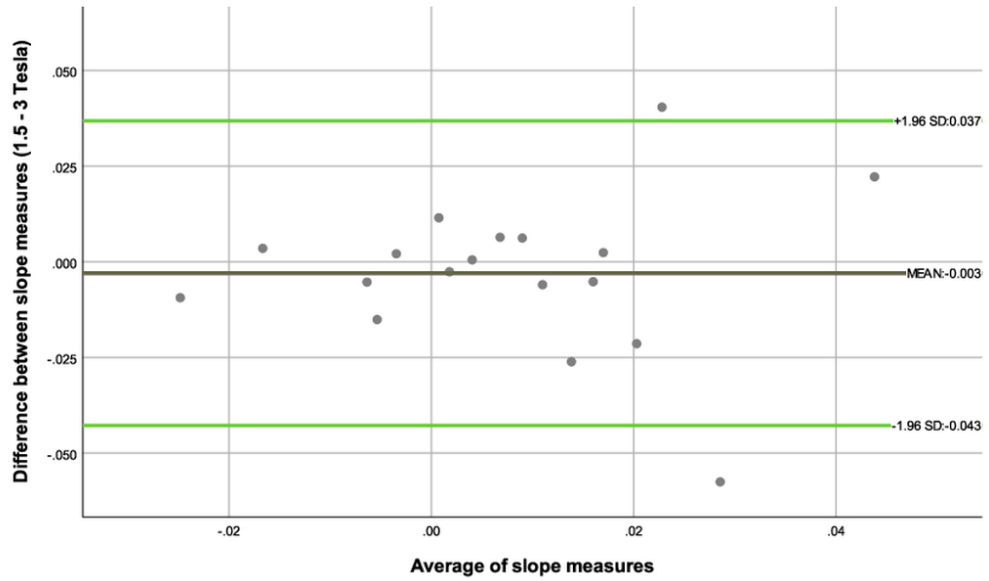
56x52mm (300 x 300 DPI)



Examples of region of interest (ROI) placement for (a) right dentate nucleus (b) right middle cerebellar peduncle, (c) right globus pallidus, (d) cerebral white matter. All ROIs were placed on pre-contrast axial T1-weighted images.

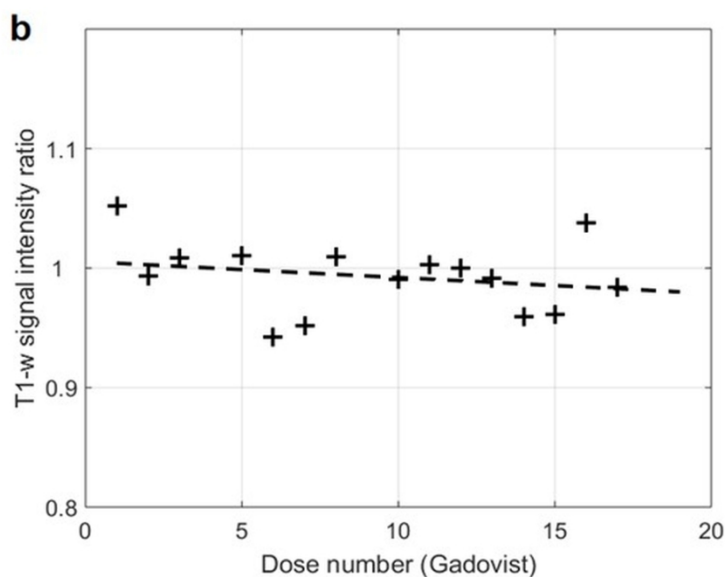
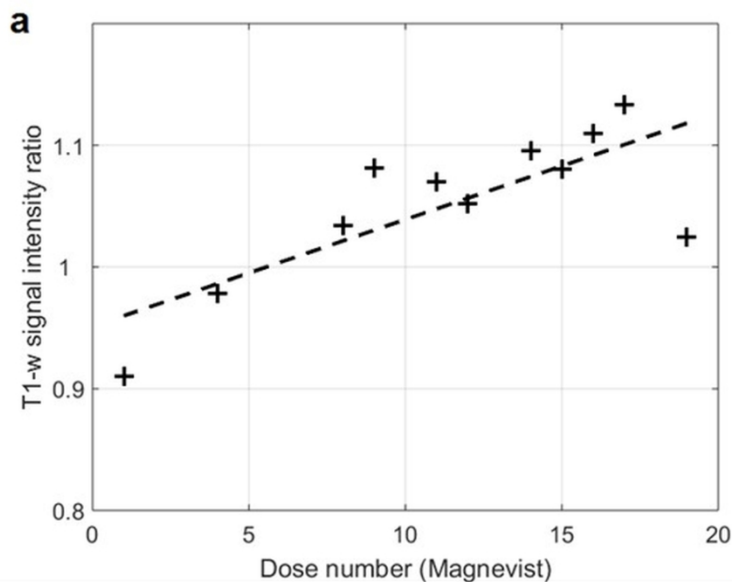
101x116mm (600 x 600 DPI)

1
2
3
4
5
6
7
8
9
10
11
12
13
14
15
16
17
18
19
20
21
22
23
24
25
26
27
28
29
30
31
32
33
34
35
36
37
38
39
40
41
42
43
44
45
46
47
48
49
50
51
52
53
54
55
56
57
58
59
60



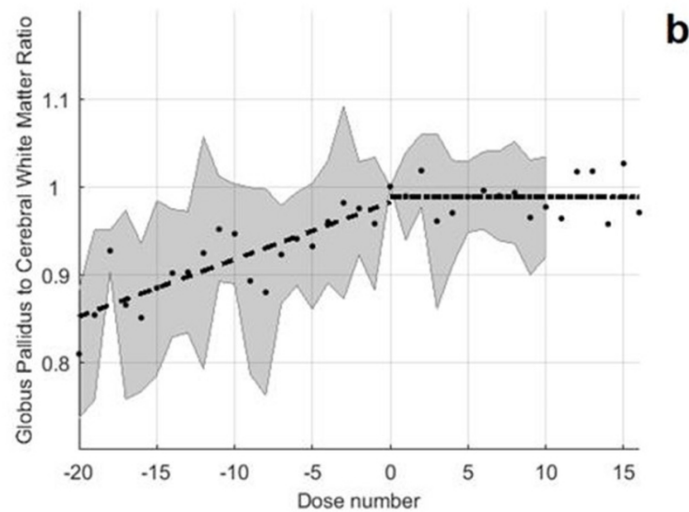
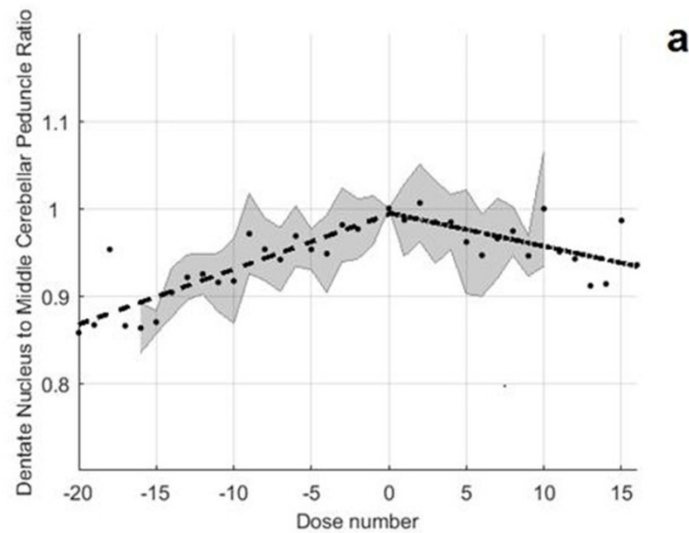
Bland-Altman plot comparing signal intensity ratio slope gradients for patients that were scanned more 3 or more times each at 1.5 and 3 Tesla using the same contrast agent. Apart from 2 outliers, all repeated measurements are within the 95% limits of agreement, and most present very small differences when measured with either a 1.5 or a 3 Tesla scanner.

86x50mm (300 x 300 DPI)



Individual subject data for relative globus pallidus (GP) / cerebral white matter (CWM) T1 signal intensity ratios for (a) a patient from the linear group and (b) a patient from the macrocyclic group. DN/MCP and GP/CWM ratios for each dose are expressed relative to the respective values derived from the unenhanced T1-weighted image prior to the first dose of gadolinium based contrast agent (GBCA).

87x129mm (300 x 300 DPI)



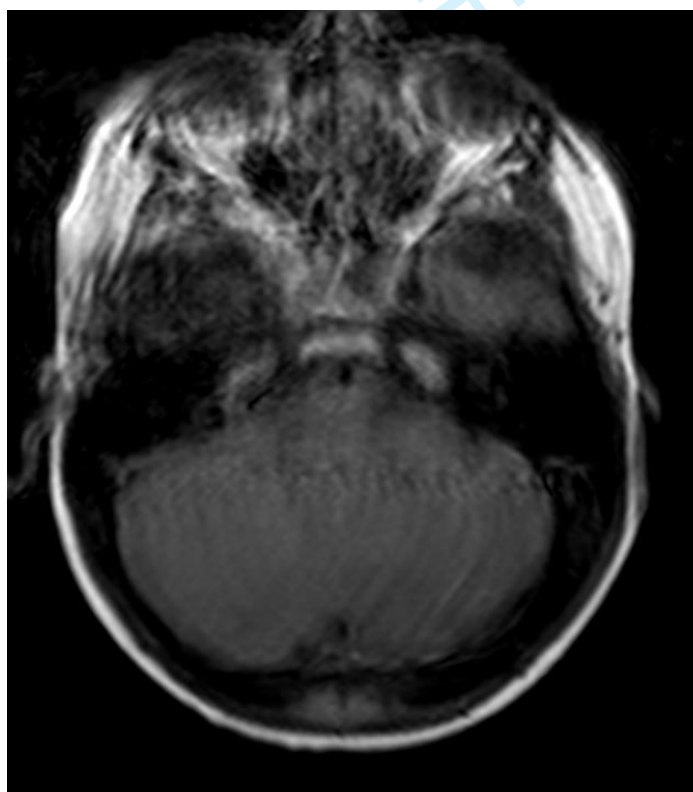
45 Group mean values (n=18) for each dose and fitted slopes from the switchover group for the relative (a)
46 dentate nucleus (DN) / middle cerebellar peduncle (MCP) and (b) globus pallidus (GP) / cerebral white
47 matter (CWM) T1 signal intensity ratios before (dashed line) and after (dash-dot line) the switch from linear
48 to macrocyclic. For each patient, the intensity ratios of the linear group are normalized by the ratio of the
49 last linear contrast agent scan, and macrocyclic ratios by the ratio of their first macrocyclic scan, so that
50 both those scans are plotted at (0,1). The gray area represents the standard deviation around the mean
51 values.

52 86x137mm (300 x 300 DPI)

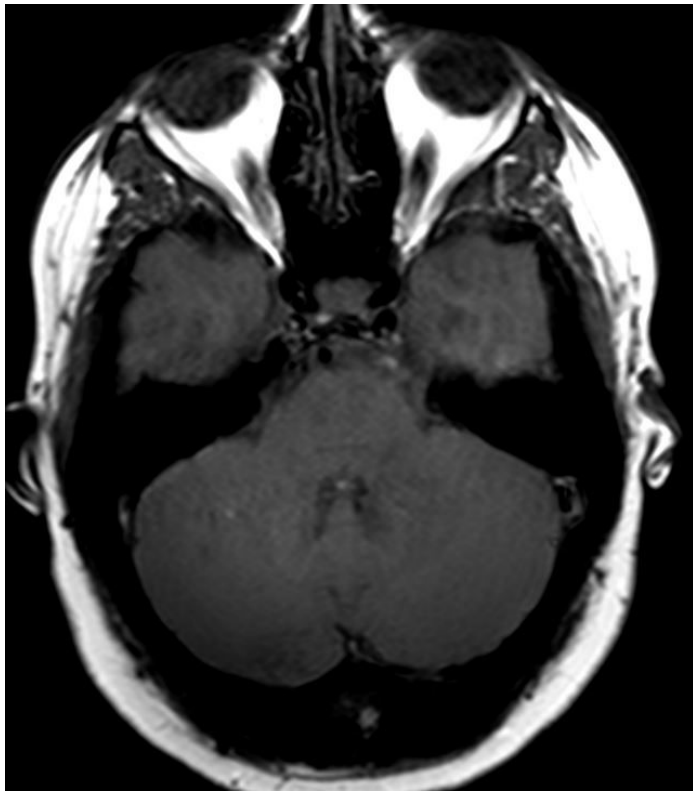
Image Quality

In a cohort of pediatric patients, it is difficult to obtain optimal image quality during MRI without using general anesthetic due to patient movement. In addition to this, flow artifact in the posterior fossa is a common feature. Many MR images were rejected for these reasons. Images were scored 0-3 where 0 = unacceptable quality or performed elsewhere; 1 = inferior quality but acceptable in the areas of analysis; 2 = acceptable quality and 3 = optimal scan.

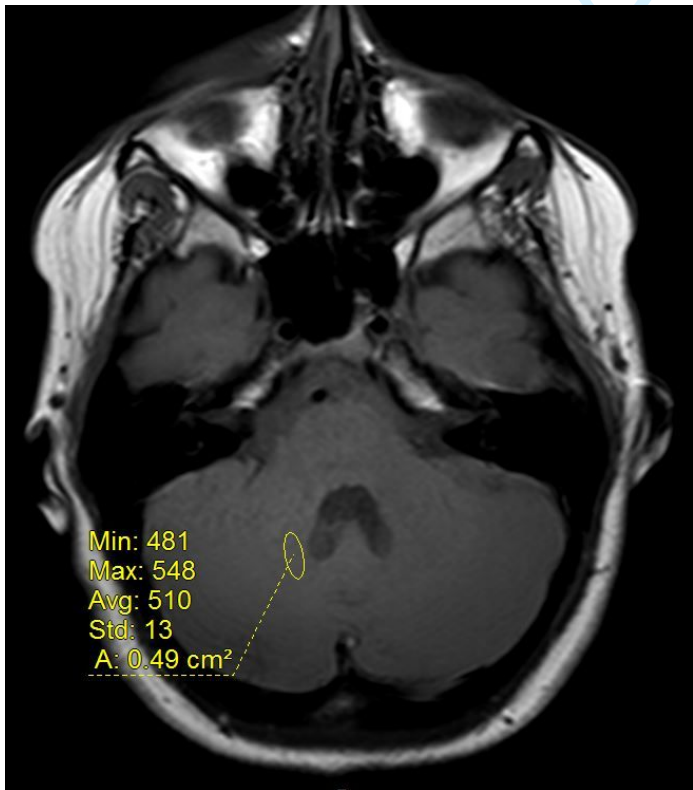
Supplementary Figures:



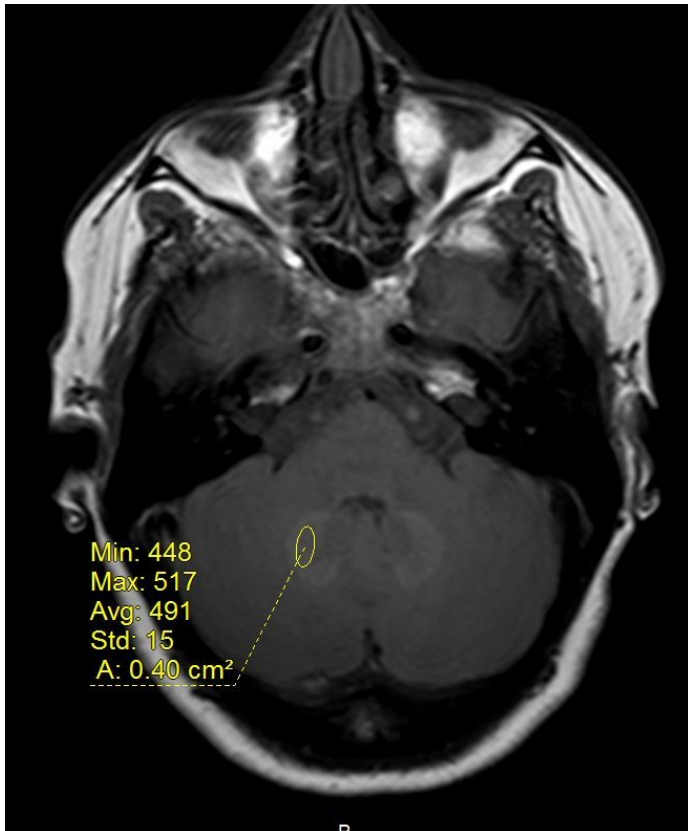
Supplementary Figure 1 -An example of category 0; pre-contrast axial T1-weighted scan with unacceptable movement artifact.



Supplementary Figure 2 - An example of category 1; pre-contrast axial T1-weighted scan with some flow artifact but it is acceptable in the lower portion of the dentate nucleus.



Supplementary Figure 3 - An example of category 2; axial pre-contrast T1- weighted scan of acceptable quality with minimal artifact



30
31
32
33
34
35
36
37
38
39
40
41
42
43
44
45
46
47
48
49
50
51
52
53
54
55
56
57
58
59
60

Supplementary Figure 4 - An example of category 3; axial pre-contrast T1-weighted scan of good quality