

Edith Cowan University
Research Online

ECU Publications Post 2013

3-1-2019

Wave 2 strains of atypical *Vibrio cholerae* El Tor caused the 2009-2011 cholera outbreak in Papua New Guinea

Andrew R. Greenhill

Ankur Mutreja

Dieter Bulach

Matthew J. Belousoff

Marinjho H. Jonduo

See next page for additional authors

Follow this and additional works at: <https://ro.ecu.edu.au/ecuworkspost2013>

 Part of the [Medical Microbiology Commons](#)

10.1099/mgen.0.000256 Greenhill, A. R., Mutreja, A., Bulach, D., Belousoff, M. J., Jonduo, M. H., Collins, D. A., ... Horwood, P. F. (2019). Wave 2 strains of atypical *Vibrio cholerae* El Tor caused the 2009-2011 cholera outbreak in Papua New Guinea. *Microbial Genomics*, 5(3). Available [here](#)

This Journal Article is posted at Research Online.

<https://ro.ecu.edu.au/ecuworkspost2013/6102>

Authors

Andrew R. Greenhill, Ankur Mutreja, Dieter Bulach, Matthew J. Belousoff, Marinjho H. Jonduo, Deirdre A. Collins, Monalisa P. Kas, Johanna Wapling, Torsten Seemann, Alice Lafana, Gordon Dougan, Mark V. Brown, and Paul F. Horwood

Wave 2 strains of atypical *Vibrio cholerae* El Tor caused the 2009–2011 cholera outbreak in Papua New Guinea

Andrew R. Greenhill,^{1,2,*†} Ankur Mutreja,^{3,4†} Dieter Bulach,^{5,6} Matthew J. Belousoff,⁶ Marinjho H. Jonduo,¹ Deirdre A. Collins,^{1,7} Monalisa P. Kas,¹ Johanna Wapling,¹ Torsten Seemann,⁵ Alice Lafana,¹ Gordon Dougan,³ Mark V. Brown⁸ and Paul F. Horwood^{1,9}

Abstract

Vibrio cholerae is the causative agent of cholera, a globally important human disease for at least 200 years. In 2009–2011, the first recorded cholera outbreak in Papua New Guinea (PNG) occurred. We conducted genetic and phenotypic characterization of 21 isolates of *V. cholerae*, with whole-genome sequencing conducted on 2 representative isolates. The PNG outbreak was caused by an atypical El Tor strain harbouring a tandem repeat of the CTX prophage on chromosome II. Whole-genome sequence data, prophage structural analysis and the absence of the SXT integrative conjugative element was indicative that the PNG isolates were most closely related to strains previously isolated in South-East and East Asia with affiliations to global wave 2 strains. This finding suggests that the cholera outbreak in PNG was caused by an exotic (non-endemic) strain of *V. cholerae* that originated in South-East Asia.

DATA SUMMARY

PRJNA448948: WGS of *Vibrio cholerae* isolates from the 2009–2011 cholera outbreak in Papua New Guinea. Read-sets for strains L1 and M2 have been submitted to the SRA under Bioproject number PRJNA448948 (url - www.ncbi.nlm.nih.gov/bioproject/PRJNA448948).

INTRODUCTION

Papua New Guinea (PNG) is the largest Pacific Island nation, with a population of ~8 million people. Health and social indicators are poor relative to regional and global averages [1]. Less than half the population has access to improved sanitation and safe water, with no appreciable improvement in recent years [1, 2].

Cholera, caused by *Vibrio cholerae*, remains a major health threat in low-income countries. Despite poor sanitation and hygiene, there are no reports of cholera in PNG prior to 2009 [3]. By the end of the 2009–2011 outbreak,

>15 500 cases and ~500 deaths were reported [4, 5]. Similarly to the global situation [6, 7], the number of reported cases may greatly under-represent the true burden of cholera in PNG, attributable to the remoteness [8] and limited diagnostic capacity outside the nation's capital [9].

The O1 serotype of *V. cholerae*, the major cause of epidemic cholera, is divided into classical and El Tor biotypes based on genetic and phenotypic differences. The seventh (current) pandemic is caused by the El Tor biotype, which displaced the classical biotype responsible for the sixth pandemic. Now only genetic remnants of the classical strain remain through outbreak isolates with a mixture of classical and El Tor genotypic characteristics of the cholera toxin (CTX) prophage; and some mixed phenotypic characteristics [10–12]. Such strains have been referred to as 'atypical' strains [13]; and more recently have been assigned CTX-1–CTX-3 [14].

Received 25 April 2018; Accepted 22 January 2019; Published 27 February 2019

Author affiliations: ¹Papua New Guinea Institute of Medical Research, Goroka, Papua New Guinea; ²School of Health and Life Sciences, Federation University Australia, Churchill, Australia; ³Wellcome Trust Sanger Institute, Hinxton, Cambridge, UK; ⁴Department of Medicine, University of Cambridge, Cambridge, UK; ⁵Melbourne Bioinformatics, The University of Melbourne, Parkville, Australia; ⁶Department of Microbiology, Monash University, Clayton, Australia; ⁷School of Medicinal and Health Sciences, Edith Cowan University, Perth, Australia; ⁸School of Environmental and Life Sciences, University of Newcastle, Callaghan, NSW, Australia; ⁹Australian Institute of Tropical Health and Medicine, James Cook University, Cairns, Australia.

*Correspondence: Andrew R. Greenhill, andrew.greenhill@federation.edu.au

Keywords: cholera; Asia; Pacific; O1; *V. Cholerae*; Oceania.

Abbreviations: ICE, integrative and conjugative element; MLST, multi-locus sequence typing; PNG, Papua New Guinea; SNP, single nucleotide polymorphism; VNTR, variable number tandem repeat; WGS, whole-genome sequencing.

†These authors contributed equally to this work.

Data statement: All supporting data, code and protocols have been provided within the article or through supplementary data files. Six supplementary tables are available with the online version of this article.

Variable number tandem repeat (VNTR) and multi-locus sequence typing (MLST) analyses suggested that a single clone of atypical El Tor *V. cholerae* caused the PNG outbreak [4]. Here, we used whole-genome sequencing (WGS), molecular characterization of the CTX prophage and plasmid detection by PCR to comprehensively characterize PNG isolates.

METHODS

Bacterial isolates and phenotypic testing

We analysed 21 isolates of *V. cholerae* collected in five provinces of PNG between January 2010 and April 2011. Twenty isolates were from patients presenting to hospital outpatient departments with acute watery diarrhoea, and one isolate (Env1) originated from a suburban watercourse collected at a time of high cholera transmission in Madang (Table S1, available in the online version of this article). Maps of PNG including provincial names have been provided in previous publications [4, 5]. Phenotypic testing was conducted to gain an insight into the characteristics of PNG isolates (whether they were phenotypically aligned with Classical, El Tor or atypical strains); and to determine antimicrobial susceptibility (Supplementary Text).

Genetic analyses and genome sequencing

Genomic DNA was extracted from overnight Luria–Bertani broth cultures using a DNeasy blood and tissue kit (Qiagen). Twelve isolates were previously characterized by MLST and VNTR [4]. Nine additional isolates underwent genetic typing using the same methods. The genetic structure of the CTX prophage and other mobile genetic elements was determined using PCR and sequencing, using novel (Table S2) and previously described primers [15, 16]. The sequence type of the *tcpA* gene was determined by PCR amplification using specific primers [15], followed by direct sequence analysis (Macrogen). To confirm the location of the CTX prophage, long-range PCRs were conducted targeting the relevant region of each chromosome (Table S2 and Supplementary Text). Isolates were tested for the presence of the SXT integrative and conjugative element (ICE) using primers targeting the boundary of the insertion point for the SXT ICE (Table S2 and Supplementary Text).

Two representative isolates, L1 from Lae and M2 from Madang (both isolated in 2010), were selected for whole-genome shotgun sequencing based on initial biotyping. Genomic DNA was fragmented and sequenced on an Illumina HiSeq 2000 sequencer (Ramaciotti Centre for Genomics, Sydney, Australia). Details of the genome sequencing are provided in Table S3 and the Supplementary Text.

The paired-end reads for the two PNG isolates and publicly available short-read data from another 222 isolates (Table S4) spanning all the waves of seventh pandemic cholera (wave 1, 2 and 3) were mapped to the reference N16961 El Tor strain (National Center for Biotechnology Information accession numbers AE003852 and AE003853) using SMALT (www.sanger.ac.uk/science/tools/smalt-0). A whole-

IMPACT STATEMENT

Cholera, a severe watery diarrhoea, has been recognized as an important human disease for hundreds of years. The current (seventh) pandemic continues to cause considerable morbidity and mortality, predominantly in low-income countries where sanitation and hygiene are lacking. In 2009–2011, the first reported outbreak of cholera occurred in Papua New Guinea (PNG), one of the most populated countries in the Pacific region. A sound understanding of the epidemiology of diseases such as cholera is important for management of disease risk. We conducted genetic analyses including whole-genome sequencing on the causative organism, *Vibrio cholerae*, isolated during the PNG outbreak. Whole-genome sequence analysis revealed that a single strain of *V. cholerae* caused the PNG outbreak; and the strain was closely related to strains that were circulating in South-East and East Asia approximately 10 years prior to the outbreak in PNG. This study did not seek to establish a mechanism of incursion of cholera into PNG, and there is no direct evidence of importation of the causative strain directly from any single country in South-East or East Asia to PNG.

genome alignment of 222 isolates was obtained and single nucleotide polymorphisms (SNPs) were called using the approach described by Mutreja *et al.* [14]. The reads that did not map to the reference N16961 genome were filtered out during the SNP calling process, and any SNP with a quality score less than 30 was excluded. An SNP was considered true only if at least 75 % of the mapped reads covering the heterogeneous site showed consistent difference to the reference. Maximum-likelihood phylogenetic trees based on the SNPs called and filtered were constructed using the default settings of RAxML v0.7.4. In brief, the general time-reversible model with gamma correction was used for among-site rate variation for ten initial trees and a 1000 bootstrap function was used [17]. Recombinogenic SNPs were excluded using Gubbins [18]. Data from a pre-seventh pandemic strain, M66 (accession numbers CP001233 and CP001234), was used to root the final phylogeny [19], and FigTree (<http://tree.bio.ed.ac.uk/software/figtree/>) was used to visualize and order the nodes of the final robust phylogenetic tree. To cross-check antimicrobial-susceptibility patterns obtained using phenotypic methods (Table S1) with WGS data, we checked against Resfinder [20] using Abriicate (<https://github.com/tseemann/abriicate>).

RESULTS

All isolates were positive for the classical type *rstR* gene; and negative for the El Tor, environmental and O139 *rstR* genes. Long-range PCR confirmed duplicate CTX prophages (~15 000 bp product) arranged in tandem on chromosome II of all isolates. Analysis using PCR revealed all PNG isolates had an identical CTX prophage profile. Table S5

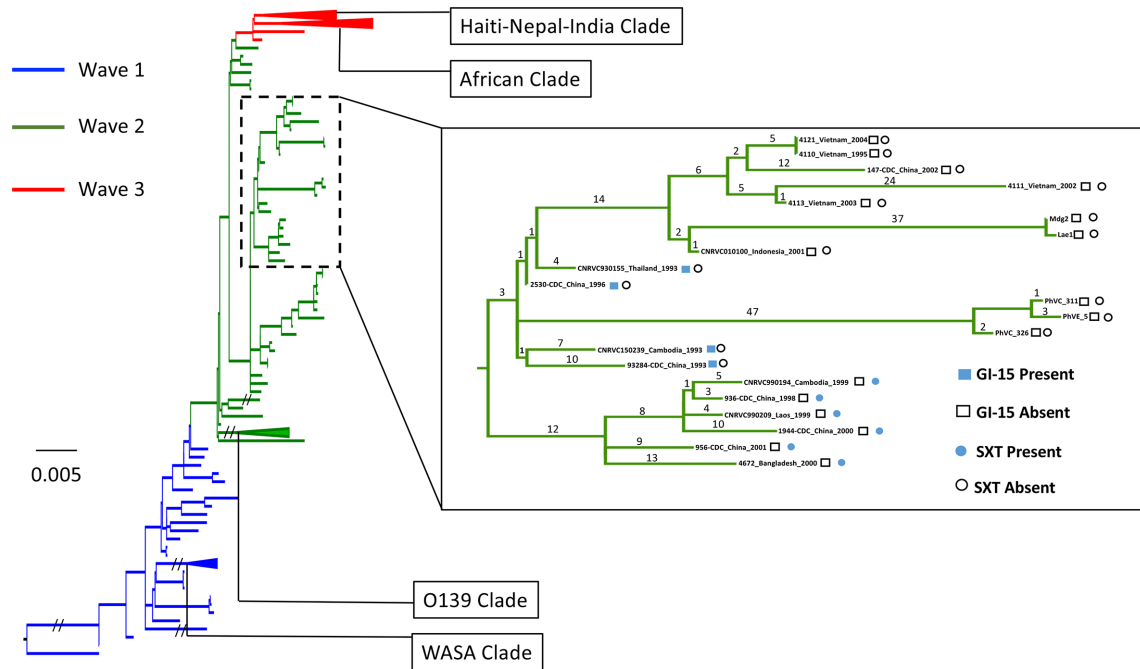


Fig. 1. Phylogenetic tree showing the relationship between the recombination-free core genomes of 225 *V. cholerae* strains, including the two PNG isolates (L1 and M2). A total of 7009 SNPs was identified (most attributable to the differences between the pre-seventh pandemic root isolate M66 and the seventh pandemic lineage), of which 4966 were assessed as high clustering and therefore removed as recombination. The phylogeny was then based on the remaining 2043 SNPs. The tree was inferred using FastTree. Isolates in the inset containing the SXT insert all had the wave 2 South Asian variant. Bar, number of substitutions per site.

provides a summary of the phenotypic and genotypic traits and CTX prophage structure of the PNG isolates. Characterization of the *tcpA* gene and the CTX prophage demonstrates that the PNG isolates are ‘atypical El Tor’ at the genotypic level. Thus, the CTX prophage present in the PNG isolates is a hybrid El Tor/classical CTX prophage; classified as CTX-2 by Mutreja *et al.* [14].

Two representative PNG isolates (L1 and M2) were selected for WGS, enabling more comprehensive core genome comparison with other pandemic *V. cholerae* isolates previously analysed [14, 21, 22]. The PNG isolates were compared to strains from previous studies, based on phenotypic and genotypic (VNTR and CTX profile) characterization and geography (country of isolation) [14, 21–23] (Table S4). In the whole-genome SNP-based phylogeny, the two PNG isolates L1 and M2 clustered with the wave 2 isolates of the seventh pandemic and were closest to an isolate (CNRVC010100) collected from Indonesia in 2001 (Fig. 1). Thirty-eight SNPs separated the Indonesian isolate and the two PNG isolates. The two PNG isolates differed by only a single SNP, at position 872 604 of the reference N16961 genome (in coding region VC_0815). The closely related Vietnamese and Chinese isolates spanned the years 1995–2004. Considering the already established natural molecular evolution rate of 3.3 SNPs per year per genome in the seventh pandemic *V. cholerae* [14], the 37 SNPs suggest that the PNG isolates delineated from their common ancestor

with the Indonesian isolate approximately 11 years previously. This corresponds with the time between circulation of wave 2 strains in South-East and East Asia (late 1990s–early 2000s) and the commencement of the PNG outbreak in 2009.

Analysis of the reads that did not map to the N16961 genome sequence revealed the presence of a 34 kb plasmid. This plasmid was absent in the M2 isolate. The presence of the plasmid in isolates that did not have WGS conducted was determined by PCR (Table S2). All isolates other than L1 were negative for the plasmid. Predicted genes present on the plasmid are provided in Table S6.

The PNG isolates L1 and M2 did not harbour the SXT or GI-15 insertions, and antimicrobial-resistance genes were not detected in these isolates. The 14 PNG isolates tested were mostly susceptible to the eight antibiotics examined (Table S1 and Supplementary Text), although antibiotic-resistance profiles of the isolates exhibited some variations (e.g. isolate L6 was resistant to chloramphenicol and tetracycline). The genetic mechanisms underlying these variations are unknown, due to the lack of genome sequence and gene expression data.

DISCUSSION

Three waves of the current seventh pandemic of cholera have been proposed [14]. Here, we used WGS to

demonstrate that the *V. cholerae* O1 strain responsible for the 2009–2011 PNG cholera outbreak is most closely related to strains isolated in Indonesia, Vietnam and China. The related Asian strains circulated between 1995 and 2004, belonging to the second wave of cholera transmission within the seventh pandemic. The relatedness of the PNG strain to strains that previously circulated (1995–2004) in the South-East and East Asia regions is further supported by the shared CTX prophage structure and arrangement. Vietnamese strains 4111 and 4121 have the same arrangement as PNG isolates (no CTX on chromosome I and tandem CTX-2 on chromosome II); while Vietnamese strains 4110 and 4113 also have tandem CTX-2 on chromosome II, with an additional CTX-2 on chromosome I. The lack of the SXT ICE (corroborated in the PNG isolates by a lack of resistance to relevant antibiotics; Table S1) and GI-15 antibiotic-resistance elements is further evidence of relatedness to East and South-East Asian isolates, as wave 2 isolates from other global regions often contain one or both these genetic elements. Notably, isolates closely related to the PNG isolates (Fig. 1) from Indonesia, Vietnam, Laos and China also lack the GI-15 element.

In our comparison with 222 previously sequenced isolates, the PNG isolates L1 and M2 were closely related to an Indonesian strain CNRVC010100 (isolated in 2001) and Vietnamese strains 4110, 4111, 4113 and 4121 (isolated in 1995, 2002, 2003 and 2004, respectively), with a minimum difference of 38 SNPs between the PNG isolates and other isolates from the South-East Asia region. Inadequate surveillance in the Asia–Pacific region, and globally, hampers our understanding of the epidemiology of cholera. Thus, it is not possible to ascertain how the strain arrived in PNG, or where it was persisting prior to the PNG outbreak.

It is now recognized that the incursion of cholera in Haiti was likely the result of human carriers coming to Haiti to contribute to the humanitarian response [24, 25]. Incursions and outbreaks have occurred elsewhere as part of the ongoing seventh pandemic, including South America and Africa [21, 26]. No disaster preceded the PNG outbreak, and there are no obvious epidemiological factors to link the index case or geographical origin of the PNG outbreak to human travel. The Haiti and PNG outbreaks (along with other large outbreaks of the current pandemic [21, 26]) are a stark reminder that the global dissemination of cholera is multifaceted and ongoing, and the disease continues to be a major health and financial burden in settings with poor sanitation and hygiene.

Conclusion

The genetic relatedness of the PNG isolates to each other (aside from the plasmid) and to regional strains indicates that cholera arrived in PNG through a single incursion, most likely from South-East Asia, that then spread throughout lowland areas.

Funding information

Ankur Mutreja received salary funding in the time this work was conducted.

Acknowledgements

We acknowledge the cholera treatment centres and associated diagnostic laboratories that obtained the *V. cholerae* isolates; thus, enabling the genetic characterization of isolates to be conducted. We are grateful to senior staff at the Port Moresby General Hospital diagnostic laboratory, National Department of Health and World Health Organization PNG for facilitating the diagnosis of cholera and allowing us to conduct genetic characterization on the isolates. We thank all members of the Infection and Immunity Unit and Environmental and Emerging Diseases Unit at the PNG Institute of Medical Research for the assistance they provided.

Conflicts of interest

The authors declare that there are no conflicts of interest.

Ethical statement

Isolates were obtained as part of routine clinical care. Sample collection was conducted by local hospitals and health centres, with support from the PNG National Department of Health and World Health Organization PNG. Approval to characterize *V. cholerae* clinical isolates was granted by the PNG Medical Research Advisory Committee (no. 10.54).

Data Bibliography

- Mutreja A, Kim DW, Thomson NR, Connor TR, Lee JH, et al. Evidence for several waves of global transmission in the seventh cholera pandemic. *Nature* 2011;477:462–465. <https://doi.org/10.1038/nature10392> (2011). Table S1.
- Weill FX, Domman D, Njamkepo E, Tarr C, Raouzi J, et al. Genomic history of the seventh pandemic of cholera in Africa. *Science* 2017;358:785–789. doi: 10.1126/science.aad5901 (2017). Table S1.
- Didelot X, Pang B, Zhou Z, McCann A, Ni P, et al. The role of China in the global spread of the current cholera pandemic. *PLoS Genet* 2015; 11:e1005072. doi:10.1371/journal.pgen.1005072 (2015). Table S1.
- Klinzing DC, Choi SY, Hasan NA, Matias RR, Tayag E, et al. Hybrid *Vibrio cholerae* El Tor lacking SXT identified as the cause of a cholera outbreak in the Philippines. *MBio* 2015;6:e00047–15. doi: 10.1128/mBio.00047-15.

References

- WHO. *Papua New Guinea Health Profile: World Health Organization*. Geneva: World Health Organization; 2014. www.who.int/gho/countries/png.pdf.
- UNICEF. At a glance: Papua New Guinea: UNICEF. 2013. Available from: www.unicef.org/infobycountry/papuang_statistics.html.
- Greenhill AR, Horwood PF. Cholera in Oceania. In: Loukas A (ed). *Neglected Tropical Diseases - Oceania*. Switzerland: Springer Nature; 2016. pp. 1–31.
- Horwood PF, Collins D, Jonduo MH, Rosewell A, Dutta SR et al. Clonal origins of *Vibrio cholerae* O1 El Tor strains, Papua New Guinea, 2009–2011. *Emerg Infect Dis* 2011;17:2063–2065.
- Horwood PF, Karl S, Mueller I, Jonduo MH, Pavlin BI et al. Spatio-temporal epidemiology of the cholera outbreak in Papua New Guinea, 2009–2011. *BMC Infect Dis* 2014;14:449.
- Ali M, Lopez AL, You YA, Kim YE, Sah B et al. The global burden of cholera. *Bull World Health Organ* 2012;90:209–218.
- Harris JB, Larocque RC, Qadri F, Ryan ET, Calderwood SB. Cholera. *The Lancet* 2012;379:2466–2476.
- Horwood P, Greenhill A. Cholera in Papua New Guinea and the importance of safe water sources and sanitation. *Western Pac Surveill Response J* 2012;3:3–5.
- Greenhill A, Rosewell A, Kas M, Manning L, Latorre L et al. Improved laboratory capacity is required to respond better to future cholera outbreaks in Papua New Guinea. *Western Pac Surveill Response J* 2012;3:30–32.

10. Nair GB, Faruque SM, Bhuiyan NA, Kamruzzaman M, Siddique AK *et al.* New variants of *Vibrio cholerae* O1 biotype El Tor with attributes of the classical biotype from hospitalized patients with acute diarrhea in Bangladesh. *J Clin Microbiol* 2002;40:3296–3299.
11. Nair GB, Qadri F, Holmgren J, Svennerholm AM, Safa A *et al.* Cholera due to altered El Tor strains of *Vibrio cholerae* O1 in Bangladesh. *J Clin Microbiol* 2006;44:4211–4213.
12. Raychoudhuri A, Mukhopadhyay AK, Ramamurthy T, Nandy RK, Takeda Y *et al.* Biotyping of *Vibrio cholerae* O1: time to redefine the scheme. *Indian J Med Res* 2008;128:695–698.
13. Safa A, Bhuiyan NA, Murphy D, Bates J, Nusrin S *et al.* Multilocus genetic analysis reveals that the Australian strains of *Vibrio cholerae* O1 are similar to the pre-seventh pandemic strains of the El Tor biotype. *J Med Microbiol* 2009;58:105–111.
14. Mutreja A, Kim DW, Thomson NR, Connor TR, Lee JH *et al.* Evidence for several waves of global transmission in the seventh cholera pandemic. *Nature* 2011;477:462–465.
15. Keasler SP, Hall RH. Detecting and biotyping *Vibrio cholerae* O1 with multiplex polymerase chain reaction. *Lancet* 1993;341:1661.
16. Nguyen BM, Lee JH, Cuong NT, Choi SY, Hien NT *et al.* Cholera outbreaks caused by an altered *Vibrio cholerae* O1 El Tor biotype strain producing classical cholera toxin B in Vietnam in 2007 to 2008. *J Clin Microbiol* 2009;47:1568–1571.
17. Stamatakis A. RAxML-VI-HPC: maximum likelihood-based phylogenetic analyses with thousands of taxa and mixed models. *Bioinformatics* 2006;22:2688–2690.
18. Croucher NJ, Page AJ, Connor TR, Delaney AJ, Keane JA *et al.* Rapid phylogenetic analysis of large samples of recombinant bacterial whole genome sequences using Gubbins. *Nucleic Acids Res* 2015;43:e15.
19. Feng L, Reeves PR, Lan R, Ren Y, Gao C *et al.* A recalibrated molecular clock and independent origins for the cholera pandemic clones. *PLoS One* 2008;3:e4053.
20. Zankari E, Hasman H, Cosentino S, Vestergaard M, Rasmussen S *et al.* Identification of acquired antimicrobial resistance genes. *J Antimicrob Chemother* 2012;67:2640–2644.
21. Didelot X, Pang B, Zhou Z, McCann A, Ni P *et al.* The role of China in the global spread of the current cholera pandemic. *PLoS Genet* 2015;11:e1005072.
22. Weill FX, Domman D, Njamkepo E, Tarr C, Raugier J *et al.* Genomic history of the seventh pandemic of cholera in Africa. *Science* 2017;358:785–789.
23. Klinzing DC, Choi SY, Hasan NA, Matias RR, Tayag E *et al.* Hybrid *Vibrio cholerae* El Tor lacking SXT identified as the cause of a cholera outbreak in the Philippines. *MBio* 2015;6:e00047-15.
24. Chin CS, Sorenson J, Harris JB, Robins WP, Charles RC *et al.* The origin of the Haitian cholera outbreak strain. *N Engl J Med* 2011;364:33–42.
25. Piarroux R, Barraï R, Faucher B, Haus R, Piarroux M *et al.* Understanding the cholera epidemic, Haiti. *Emerg Infect Dis* 2011;17:1161–1168.
26. Domman D, Quilici ML, Dorman MJ, Njamkepo E, Mutreja A *et al.* Integrated view of *Vibrio cholerae* in the Americas. *Science* 2017;358:789–793.

Five reasons to publish your next article with a Microbiology Society journal

1. The Microbiology Society is a not-for-profit organization.
2. We offer fast and rigorous peer review – average time to first decision is 4–6 weeks.
3. Our journals have a global readership with subscriptions held in research institutions around the world.
4. 80% of our authors rate our submission process as 'excellent' or 'very good'.
5. Your article will be published on an interactive journal platform with advanced metrics.

Find out more and submit your article at microbiologyresearch.org.