

Edith Cowan University
Research Online

ECU Publications Post 2013

1-1-2018

Colorectal cancer survival rates in Ghana: A retrospective hospital-based study

Francis Agyemang-Yeboah

Joseph Yorke

Christian Obirikorang

Emmanuella Nsenbah Batu

Emmanuel Acheampong

Edith Cowan University, e.acheampong@ecu.edu.au

See next page for additional authors

Follow this and additional works at: <https://ro.ecu.edu.au/ecuworkspost2013>



Part of the [Diseases Commons](#), and the [Health Services Research Commons](#)

[10.1371/journal.pone.0209307](https://doi.org/10.1371/journal.pone.0209307)

Agyemang-Yeboah, F., Yorke, J., Obirikorang, C., Batu, E. N., Acheampong, E., Frimpong, E. A., ... & Amankwaa, B. (2018). Colorectal cancer survival rates in Ghana: A retrospective hospital-based study. *PloS one*, *13*(12), e0209307.

Available [here](#).

This Journal Article is posted at Research Online.

<https://ro.ecu.edu.au/ecuworkspost2013/5481>

Authors

Francis Agyemang-Yeboah, Joseph Yorke, Christian Obirikorang, Emmanuella Nsenbah Batu, Emmanuel Acheampong, Emmanuel Amankwaa Frimpong, Enoch Odame Anto, and Bright Amankwaa

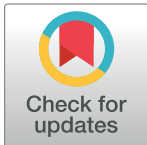
RESEARCH ARTICLE

Colorectal cancer survival rates in Ghana: A retrospective hospital-based study

Francis Agyemang-Yeboah¹, Joseph Yorke², Christian Obirikorang¹, Emmanuella Nsenbah Batu¹, Emmanuel Acheampong^{1,3*}, Emmanuel Amankwaa Frimpong⁴, Enoch Odame Anto^{1,3}, Bright Amankwaa¹

1 Department of Molecular Medicine, School of Medical Science, Kwame Nkrumah University of Science and Technology (KNUST), Kumasi, Ghana, **2** Department of Surgery, Komfo Anokye Teaching Hospital, Kumasi, Ghana, **3** School of Medical and Health Sciences, Edith Cowan University, Joondalup, Western Australia, Australia, **4** Oncology Unit, Komfo Anokye Teaching Hospital, Kumasi, Ghana

* emmanuelachea1990@yahoo.com



Abstract

Background

Colorectal cancer (CRC) is one of the commonest cancers associated with diverse prognosis times in different parts of the world. Despite medical interventions, the overall clinical outcomes and survival remains very poor for most patients in developing countries. This study therefore investigated the survival rate of colorectal cancer and its prognostic factors among patients at Komfo Anokye Teaching Hospital, Ghana.

Methodology

In this retrospective cohort study, a total of 221 patients diagnosed with CRC from 2009 to 2015 at the Surgical and Oncological units of Komfo Anokye Teaching Hospital (KATH), Kumasi, Ghana were employed. The survival graphs were obtained using the Kaplan–Meier method and compared by the Log-rank test. Cox regression analysis was used to assess prognostic factors. All analyses were performed by SPSS version 22.

Results

The median survival time was 15 months 95% CI (11.79–18.21). The overall survival rate for CRC over the 5 years period was 16.0%. The survival rates at the 1st, 2nd, 3rd, 4th and 5th years were 64% 95% CI (56.2–71.1), 40% 95% CI (32.2–50.1), 21% 95% CI (11.4–30.6) 16% 95% CI (8.9–26.9) and 16% 95% CI (7.3–24.9). There was a significant difference in the survival rate of colorectal cancer according to the different stages ($p = 0.0001$). Family history [HR = (3.44), $p = 0.029$], Chemotherapy [HR = (0.23), $p = <0.0001$], BMI [HR = (1.78), $p = 0.017$] and both chemo/radiotherapy (HR = (3.63), $p = 0.042$) were the significant social and clinical factors influencing the overall survival. Pathological factors such as TNM tumour stage ($p = 0.012$), depth of tumour invasion ($p = 0.036$), lymph node metastasis ($p = 0.0001$), and distance metastasis ($p = 0.001$) were significantly associated with overall survival.

OPEN ACCESS

Citation: Agyemang-Yeboah F, Yorke J, Obirikorang C, Nsenbah Batu E, Acheampong E, Amankwaa Frimpong E, et al. (2018) Colorectal cancer survival rates in Ghana: A retrospective hospital-based study. PLoS ONE 13(12): e0209307. <https://doi.org/10.1371/journal.pone.0209307>

Editor: Benn Sartorius, University of Kwazulu-Natal, SOUTH AFRICA

Received: February 13, 2017

Accepted: December 4, 2018

Published: December 19, 2018

Copyright: © 2018 Agyemang-Yeboah et al. This is an open access article distributed under the terms of the [Creative Commons Attribution License](https://creativecommons.org/licenses/by/4.0/), which permits unrestricted use, distribution, and reproduction in any medium, provided the original author and source are credited.

Data Availability Statement: All relevant data are within the manuscript and its Supporting Information files.

Funding: There was no funding for the project.

Competing interests: The authors have declared that no competing interests exist.

Conclusion

The study has clearly demonstrated that survival rate for CRC patients at KATH, Ghana is very low in a 5 years period. This is influenced by significant number of clinical and pathological prognostic factors. Identification of prognostic factors would be a primary basis for early prediction and treatment of patients with colorectal cancer.

Introduction

Globally, colorectal cancer is one of the commonest cancers and in the western countries; it is the second leading cause of cancer mortality. [1]. The difference in survival rates observed in various clinical trials maybe due to the variations in patient's characteristics and prognostic factors [2]. Survival of colorectal cancer has improved dramatically over the last decade as a result of the invention of new drugs and targeted therapies. [3]. However, enormous disparities in colorectal cancer survival exist within regions and across the global [4, 5]. These differences are not easily understood, although most of the disparities in CRC survival can be attributed to variation in the accessibility to treatment and diagnostics [5]. In addition, molecular analyses performed so far indicates that the pathogenesis of all CRCs varies at different stage tumours. Even for individual patients with same stage tumours, response to treatment and long term prognosis varies[6].

Over the past years, several research groups have suggested numerous factors associated with the survival of CRC patients.[7, 8]. However, the extent of tumour infiltration to the bowel wall, adjacent lymph node metastases and distant metastasis are the major contributing factors [9]. Although, various studies [10, 11] have reported a strong correlation between colorectal cancer stage and its prognosis, it has also been argued in other studies [10, 12] that the prognosis for a patient with colorectal cancer is much influenced by factors relating to patients characteristics and the tumour but not just the anatomical extension of the tumour.

Additionally, other studies have also showed that the initial treatment administered, body mass index (BMI), marital status, tumour grade, tumour size and pathologic stage of tumour are significantly associated with the survival of CRC patients [5, 13]. Recent studies have shown that the survival of CRC in sub-Saharan African is very low due to late presentations and lack of modern specialized systems for treatment [14]. In Ghana, the number of new cases of colorectal cancer has increased by 8- fold per year from an average of 4.1 new cases in 1960s to an average of 32.6 new cases currently [15, 16]. In 2010, Dakubo *et al* reported a crude incidence rate of 11.18 per 100,000 populations in both sexes. Moreover, Laryea *et al.*, (2014) reported a crude incidence and age standardized incidence of 0.1 and 0.3 per 100,000 population [17]. Some studies have identified other factors such as helicobacter pylori infection, the dietary component of red meat, beef, lamb, pork and veal and its processed varieties as the predominant risk factors in Ghana [16, 18, 19]. There is paucity of data on the survival rate of CRC as well as its associated factors in Ghana. Knowledge of prognostic factors in our population will be the foundation for planning treatment and predicting the outcome of patients with colorectal cancer. It is thus, against this background that this study investigated the survival rate of colorectal cancer and its prognostic factors among patients at Komfo Anokye Teaching Hospital, Ghana.

Methodology

Study design/setting

This was a retrospective cohort study, conducted among CRC patients at the Surgical and Oncological (S&O) Department of the Komfo Anokye Teaching Hospital. Komfo Anokye

Teaching Hospital (KATH) is the second largest and a referral teaching hospital located in Kumasi, the regional capital of the Ashanti region in Ghana. The region has an average total population of 4,780,380 (Ghana Statistical Service, 2010).

Study population and participants' selection

A total of 221 cases of CRC, recorded from 2009 to 2015 were retrospectively retrieved from the medical records of the S & O Department database with a 100% rate of accuracy. Information on socio-demographics characteristics, clinical and pathological variables including histological type, grade of tumour and TNM staging were recorded. Data on type of treatments was also reviewed. Moreover, BMI based on the patient's current recorded weight and height since been diagnosed was also calculated. Smoking history comprised of patients who indicated that they had ever smoked or was currently smoking, and alcohol intake also refers to patients who were currently alcoholics and those who used to be alcoholic.

Inclusion criteria

Records showing complete clinical examination, indicating the presence of malignant tumour in the large bowel were included.

Exclusion criteria

Patients with other large bowel conditions and histopathological confirmed non-malignant tumours were excluded.

Follow-up

Patients were contacted during their follow-up visits to the hospital and those who could not report for review in the hospital were contacted via telephone. Deaths of subjects were confirmed via contact with their families and relatives. Survival periods were calculated from the date of diagnosis to the date of either last follow-up or death. Patients alive at the end of the follow-up and those lost to follow-up were censored either at the last contact or at death.

[Fig 1](#) shows the procedure for the selection of cases for the study.

Statistical analysis

Data entry and analysis were performed using SPSS version 20. Survival analysis was done using Kaplan–Meier method and the differences in patient survival periods were determined by employing the log-rank test in relation to socio-demographic and lifestyle characteristics, and clinical and pathological parameters [[Tables 1 and 2](#)]. To determine the prognostic factors for survival, all variables were tested for their relationship in the Cox-regression model. Proportional hazard (PH) assumptions were initially tested for each model [[Tables 3–5](#)] based on the scaled Schoenfeld residuals. The PH test was not significant for each of the covariates in each model and the global Schoenfeld test (GST) was not statistically significant for each model [[Table 3](#); GST: $p = 0.481$, [Table 4](#); GST: $p = 0.186$, [Table 5](#); GST: $p = 0.216$], we therefore assumed the proportional hazards. Multicollinearity test was done for covariates in each model, and the variation inflation factor (VIF) value obtained for covariates in each model was within a range of 1–5 suggesting that there is no multicollinearity. Multivariable Cox regression analysis was carried using the force entry procedure. The Chi-square value obtained for the regression model for [Table 4](#) ($\chi^2 = 42.7$, $p < 0.0001$) and [Table 5](#) ($\chi^2 = 28.8$, $p = 0.017$) were statistically significant, however Chi-square value for regression model for [Table 3](#) did not show significance ($\chi^2 = 15.8$, $p = 0.328$). There were no statistically significant differences

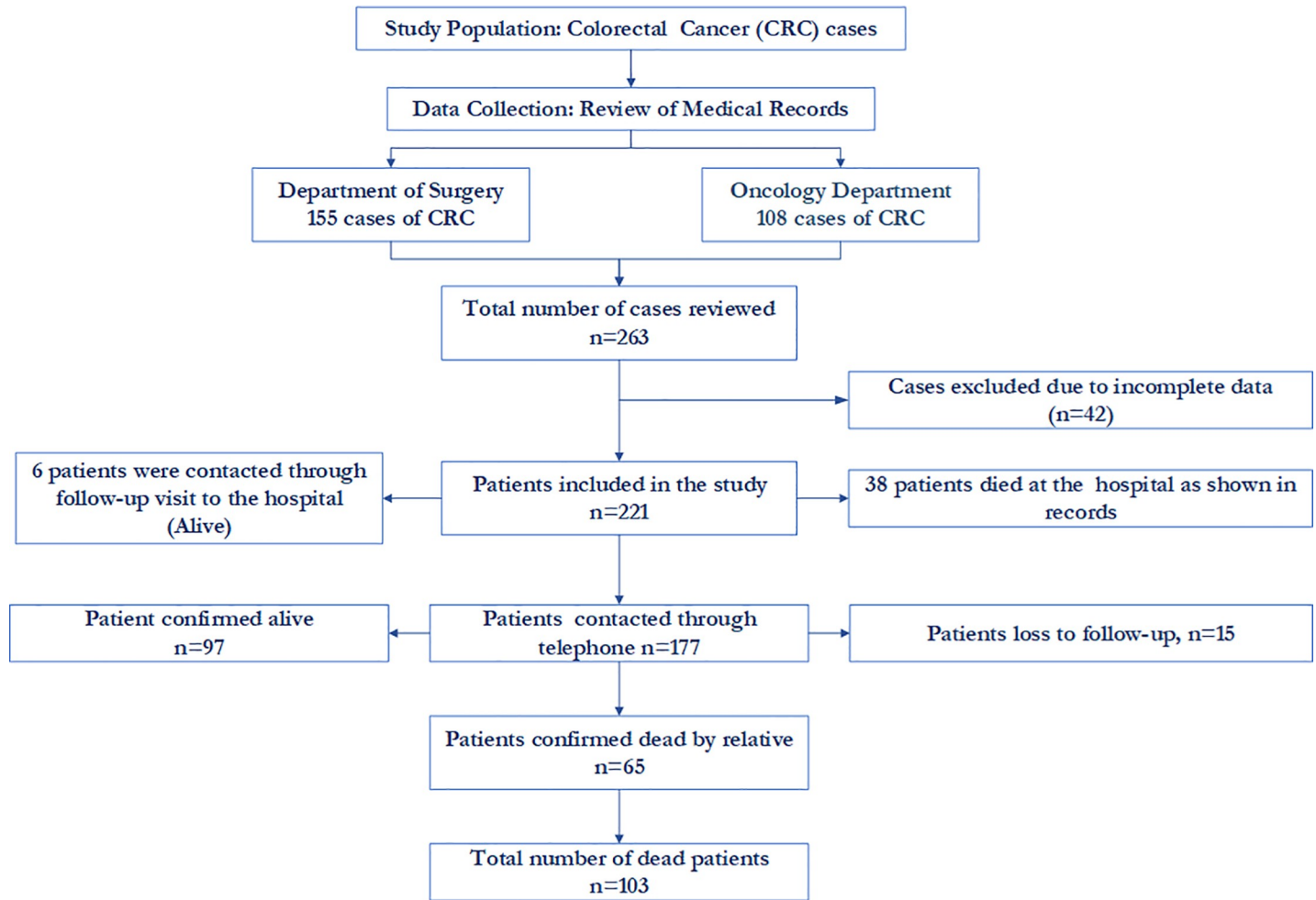


Fig 1. Procedure for the selection of cases for the study.

<https://doi.org/10.1371/journal.pone.0209307.g001>

between patients who were follow-up and those who were not followed in relation to socio-demographic and lifestyle characteristics, clinical and pathological parameters [S1 Table]. A $p < 0.05$ was accepted as statistically significant.

Ethical consideration

Ethical Approval for the study was obtained from the Committee on Human Research, Publication and Ethics (CHRPE/AP/286/15) of the School of Medical Sciences (SMS), Kwame Nkrumah University of Science and Technology (KNUST) as well as the Research and Development (R&D) Unit of the KATH.

Results

As shown in Fig 2, the median survival time was 15 months 95% CI (11.79–18.21). The survival rates at the 1st, 2nd, 3rd, 4th and 5th years were 64% 95% CI (56.2–71.1), 40% 95% CI (32.2–50.1), 21% 95% CI (11.4–30.6) 16% 95% CI (8.9–26.9) and 16% 95% CI (7.3–24.9).

The survival rate was high among patient in stage I: 90% [95% CI (75.5–104.5)], compared to stage II: 34% [95% CI (5.6–62.4)], stage III: 12% [95% CI (11.9–13.1)] and stage IV (0.0%).

Table 1. Association of socio-demographic and lifestyle characteristics with survival using log rank test.

Variable	Frequency (n, %)	Median OS (95% CI) (months)	P-value
Age (years)			0.241
< 40	40(22.6%)	28(3.5–52.5)	
40–49	31(14.0%)	17(5.0–29.0)	
50–59	58(26.2%)	14(6.6–21.4)	
60–69	43(19.5%)	14(11.5–16.5)	
≥70	39(17.6%)	20(9.3–30.7)	
Gender			0.996
Female	94(42.5%)	15(10.9–19.1)	
Male	127(57.5%)	14(8.6–18.2)	
Marital Status			0.464
Single	27(12.2%)	28(0.7–55.3)	
Married	140(63.3%)	14(11.0–16.9)	
Divorced	21(9.50%)	19(17.5–20.5)	
Widowed	33(14.9%)	15(1.8–28.2)	
Family History			0.036
No	205(92.8%)	15(11.5–18.4)	
Yes	16(7.2%)	—	
Presence of Comorbidities			0.250
No	166(75.1%)	15(11.6–18.4)	
Yes	55(24.9%)	15(5.5–24.5)	
Hypertension			0.232
No	177(80.1%)	17(13.3–20.7)	
Yes	44(19.9%)	14(10.0–18.0)	
Diabetes			0.588
No	203(91.9%)	15(11.5–18.5)	
Yes	18(8.1%)	28(16.3–39.7)	
Alcoholic intake			0.717
No	200(90.5%)	15(11.6–18.4)	
Yes	21(9.5%)	21(5.8–36.2)	
Smoking history			0.696
No	210(95.0%)	15(11.9–19.1)	
Yes	11(5.0%)	13(10.6–15.4)	

OS = Overall Survival.

<https://doi.org/10.1371/journal.pone.0209307.t001>

The differences in survival rates among the different cancer stages were statistically significant ($p = 0.0001$) [Fig 3].

Table 1 shows the association between socio-demographic and lifestyle characteristics and CRC survival. There was no statistically significant association between survival and age ($p = 0.241$), gender ($p = 0.996$), marital status ($p = 0.464$), presence of comorbidities ($p = 0.250$), hypertension ($p = 0.232$), diabetes ($p = 0.588$), alcohol intake ($p = 0.717$) and smoking ($p = 0.696$). Meanwhile, family history was significantly associated with survival ($p = 0.036$).

As shown in Table 2, chemotherapy as a treatment modality was significantly associated with survival ($p = 0.0001$). The median survival time of patient who underwent chemotherapy was higher (30 months) compared to those who did not undergo chemotherapy (11 months). Body mass index (BMI) was also significantly associated with survival ($p = 0.036$) with

Table 2. Association of clinical and pathological parameters with survival using log rank test.

Variable	Frequency (n, %)	Median OS (95%CI) (Months)	P-value	Variables	Frequency (n, %)	Median OS (95%CI) (Months)	P-value
Duration of Symptoms (months)			0.567	Tumour Location			0.405
< 6	95(43.0%)	19(13.4–24.6)		Colon	75(33.9%)	14(7.3–20.7)	
6 to 12	85(38.5%)	14(11.6–16.4)		Rectum	108(48.9%)	17(11.2–22.8)	
> 12	41(18.6%)	14(10.2–17.7)		Anorectum	18(8.1%)	18(0.8–37.9)	
Surgery			0.640	Anal	13(5.9%)	12(10.6–13.4)	
No	76(34.4%)	15(9.9–20.1)		More than one site	7(3.2%)	19(6.6–31.4)	
Yes	145(65.6%)	14(8.8–19.2)		Histological Grade			0.332
Nature of Operation			0.741	Well differentiated	51(23.1%)	14((0.9–29.8)	
Emergency	49(33.8%)	14(8.8–19.2)		Moderately differentiated	104(47.1%)	15(11.0–18.9)	
Elective	96(66.2%)	19(12.6–25.4)		Poorly differentiated	25(11.3%)	30(0.4–73.9)	
Chemotherapy			0.0001	Undifferentiated	41(18.6%)	18(15.6–20.4)	
No	118(53.4%)	11(8.0–14.0)					
Yes	103(46.6%)	30(18.0–42.0)		TNM Tumour Stage			0.0001
Radiotherapy			0.402	Stage I	13(6.0%)	48(41–56.5)	
No	166(75.1%)	14(9.8–18.2)		Stage II	64(29.0%)	36 (15.2–56.7)	
Yes	55(24.9%)	17(13.1–20.8)		Stage III	89(40.3%)	14 (11.1–16.9)	
Chemo-radiotherapy			0.587	Stage IV	55(24.9%)	11(6.0–16.0)	
No	173(80.1%)	15(11.0–19.0)					
Yes	43(19.9%)	15(11.8–18.2)		Lymph Node Metastasis			0.0001
BMI Categories			0.036	N0	78(35.3%)	36(21.4–50.6)	
Underweight	77(34.8%)	11(5.3–16.7)		N1	88(39.9%)	12(9.5–14.5)	
Normal	90(40.7%)	18(9.7–26.3)		N2	55(24.9%)	15(10.1–19.9)	
Overweight	32(14.5%)	26(15.2–36.8)		Distant Metastasis			0.0001
Obese	22(10.0%)	23(11.3–34.7)		M0	68(21.7%)	19(12.0–25.9)	
Depth of Tumour Invasion				M1	173(78.3%)	11(6.0–15.9)	
T2	18(8.2%)	28(15.1–40.9)					
T3	84(38.0%)	14(5.2–22.8)					
T4	119(53.8%)	14(10.7–18.7)					

OS = Overall Survival, BMI = Body Mass Index, P<0.05 = statistically significant.

<https://doi.org/10.1371/journal.pone.0209307.t002>

underweight patients having the least median survival time (11 months). For the pathological parameters, there was significant difference in the stage of tumour, lymph node metastasis and distance metastasis with survival (p< 0.05). Stage III and IV tumours had low median survival time (Stage III = 14 months, IV = 11months) compared to early stage tumours (36 months). Other parameters such as histological grade (p = 0.332), depth of tumour invasion (p = 0.070) and tumour location (p = 0.405) were not significantly associated with survival.

Table 3 shows the association of socio-demographic and lifestyle characteristics with survival. Using cox regression analysis, family history was the only variable that was significantly associated with survival on both univariate [HR = 0.37, 95% (0.14–0.99); p = 0.049] and multivariate analysis [HR = 3.44, 95%CI (0.09–0.88)]. Age, gender, marital status, alcoholic intake and smoking history were statistically not associated with survival (p>0.05). The odds of survival decreased as age advanced as shown in the hazard ratios but was not statistically significant (p>0.05). Male gender, being widowed, presence of comorbidities and having hypertension had increased hazard ratios but not statistically significant on both univariate and multivariate analysis.

Table 3. Association of socio-demographics and lifestyle characteristics with survival using Cox regression analysis.

Variables	Univariate Analysis			Multivariate Analysis		
	HR	95% CI	P-value	HR	95% CI	P-value
Age						
< 40	1					
40–49	0.51	(0.20–1.30)	0.160	0.49	(0.18–1.34)	0.159
50–59	1.28	(0.71–2.33)	0.424	1.27	(0.63–2.54)	0.520
60–69	1.30	(0.71–2.37)	0.399	1.36	(0.63–2.92)	0.465
≥70	1.16	(0.61–2.21)	0.655	0.97	(0.42–2.20)	0.909
Gender						
Female	1					
Male	1.00	(0.67–1.49)	0.996	1.11	(0.71–1.74)	0.626
Marital Status						
Single	1					
Married	0.91	(0.46–1.84)	0.799	0.94	(0.40–2.21)	0.877
Divorced	0.75	(0.37–1.51)	0.423	0.90	(0.43–1.89)	0.781
Widowed	1.37	(0.80–2.33)	0.25	1.27	(0.68–2.37)	0.439
Family History						
No	1					
Yes	2.73	(1.00–7.44)	0.049	3.44	(0.09–0.88)	0.029
Presence of Comorbidities						
No	1					
Yes	1.27	(0.84–1.94)	0.262	1.29	(0.74–2.26)	0.734
Hypertension						
No	1					
Yes	1.31	(0.83–2.08)	0.244	1.11	(0.45–2.75)	0.734
Diabetes						
No	1					
Yes	1.17	(0.65–2.10)	0.597	0.74	(0.35–1.55)	0.512
Alcoholic intake						
No	1					
Yes	0.88	(0.42–1.81)	0.722	0.65	(0.25–1.69)	0.401
Smoking history						
No	1					
Yes	0.84	(0.34–2.06)	0.703	1.40	(0.42–4.69)	0.607

HR = Hazard Ratio, CI = Confidence Interval, P<0.05 = statistically significant.

<https://doi.org/10.1371/journal.pone.0209307.t003>

Table 4 shows the association between clinical factors and survival using cox regression analysis. In both univariate and multivariate analysis chemotherapy (p = 0.0001) and being underweight (p < 0.05) were significant prognostic factors in colorectal cancer survival. Chemotherapy was associated with high odds of survival (HR: 0.38 (0.25–0.57) whereas having chemo radiotherapy (HR: 3.63(1.05–12.59) and being underweight (HR: 1.74(1.11–2.72) were associated with decrease odds of surviving. Meanwhile, treatment with both chemo and radiotherapy (p = 0.042) were significant prognostic factors for CRC survival after multivariate analysis. Duration of symptoms, surgery, nature of operation and having radiotherapy were not statistically associated with survival (p > 0.05).

The association between pathological factors and survival using cox regression analysis is shown in **Table 5**. Stage of tumour, depth of tumour invasion, lymph node metastasis and

Table 4. Association of clinical parameters with survival using cox regression analysis.

Variables	Univariate Analysis			Multivariate Analysis		
	HR	95% CI	P-value	HR	95% CI	P-value
Duration of Symptoms						
< 6	1					
6–12	1.18	(0.671–2.057)	0.573	1.23	(0.78–1.93)	0.380
> 12	1.34	(0.759–2.379)	0.311	1.23	(0.62–2.26)	0.491
Surgery						
No	1					
Yes	1.11	(0.72–1.69)	0.648	3.82	(0.16–91.51)	0.408
Nature of Operation						
Emergency	0.99	(0.63–1.58)	0.985	3.41	(0.14–82.49)	0.451
Elective	1					
Chemotherapy						
No	1					
Yes	0.38	(0.25–0.57)	0.0001	0.23	(0.13–0.41)	<0.0001
Radiotherapy						
No	1					
Yes	0.82	(0.51–1.32)	0.413	0.56	(0.20–1.60)	0.282
Both Chemo and Radiotherapy						
No	1					
Yes	0.87	(0.52–1.46)	0.596	3.63	(1.05–12.59)	0.042
BMI Categories						
Normal	1					
Underweight	1.74	(1.11–2.72)	0.016	1.78	(1.11–2.86)	0.017
Overweight	0.95	(0.51–1.75)	0.860	0.93	(0.48–1.78)	0.817
Obese	0.94	(0.46–1.89)	0.852	0.95	(0.46–1.98)	0.894

HR = Hazard ratio, CI = confidence interval, BMI = body mass Index, P<0.05 = statistically significant.

<https://doi.org/10.1371/journal.pone.0209307.t004>

distant metastasis were significant prognostic factors on univariate analysis ($p < 0.05$). Late stage tumours, Stage III [HR: 9.41(1.29–68.58), $p = 0.027$] and stage IV [HR: 12.89 (1.74–95.24), $p = 0.012$] were associated with poor survival. Similarly, T3 [(HR: 3.42 (1.05–11.11), $p = 0.041$)] and T4 [(HR: 3.51(1.09–11.33) $p = 0.036$)], N stages, N1 [(HR: 2.65 (1.58–4.43), $p = 0.0001$)] and N2 [(HR: 2.42(1.24–4.73), $p = 0.009$)] and M1 [(HR: 12.16(1.37–3.40), $P = 0.001$)] were associated with poor survival. Tumour location and histological grade were not statistically significant.

Discussion

Globally, there has been great improvement in colorectal cancer survival over the past decade partly due to early detection and more effective treatments [20]. However, CRC still remains a major cause of mortality in developing countries. This study therefore investigated the survival rate of colorectal cancer and its prognostic factors among patients at the Komfo Anokye Teaching Hospital, in Ghana.

In this study, the overall five year survival rate was 16%, which is extremely lower than the typically reported survival rate in developed countries. A study by sankaranarayanan et al., (2011) on cancer survival in Africa, Asia, and Central America reported that, colorectal cancer survival in Sub-Saharan African countries was extremely poor compared to Asian and central

Table 5. Association of pathological parameters with survival using cox regression analysis.

Variables	Univariate Analysis			Multivariate Analysis		
	HR	95% CI	P-value	HR	95% CI	P-value
Tumour Location						
Colon	1					
Rectum	0.99	(0.64–1.53)	0.965	0.86	(0.50–1.48)	0.592
Anorectum	0.41	(0.14–1.14)	0.088	0.40	(0.12–1.37)	0.144
Anal	1.12	(0.49–2.5)	0.79	2.15	(0.69–6.62)	0.183
More than one site	1.28	(0.49–3.28)	0.612	0.76	(0.22–2.64)	0.660
Histological Grade						
Well differentiated	1					
Moderately differentiated	1.62	(0.94–2.80)	0.085	1.33	(0.70–2.52)	0.377
Poorly differentiated	1.58	(0.77–3.55)	0.229	1.01	(0.35–2.91)	0.986
Undifferentiated	1.66	(0.75–3.33)	0.193	1.56	(0.63–3.85)	0.338
Tumour Stage						
Stage I	1					
Stage II	4.12	(0.55–30.84)	0.168	2.00	(0.16–25.79)	0.595
Stage III	9.41	(1.29–68.58)	0.027	4.97	(0.28–87.64)	0.274
Stage IV	12.89	(1.74–95.24)	0.012	13.34	(0.49–359.01)	0.123
Depth of Tumour Invasion						
T2	1					
T3	3.42	(1.05–11.11)	0.041	1.67	(0.37–7.61)	0.508
T4	3.51	(1.09–11.33)	0.036	1.93	(0.43–8.59)	0.389
Lymph Node Metastasis						
N0	1					
N1	2.65	(1.58–4.43)	0.0001	1.01	(0.25–4.08)	0.991
N2	2.42	(1.24–4.73)	0.009	0.71	(0.17–2.95)	0.641
Distant Metastasis						
M0	1					
M1	2.16	(1.37–3.40)	0.001	0.49	(0.11–2.18)	0.352

HR = Hazard Ratio, CI = confidence Interval, T = tumour depth, N = lymph node metastasis, M = distant metastasis, P<0.05 = statistically significant

<https://doi.org/10.1371/journal.pone.0209307.t005>

American countries. In sub-Saharan countries like the Gambia and Uganda, the survival was less than 8% compared to 60% survival rate in Korea and this shows the huge variation in cancer survival between these two continents [21]. Lack of modernised infrastructure for cancer care and unavailability of curative treatment for patients were some of the factors identified for the poor cancer survival in Sub Saharan Africa. In Asian countries like China, colorectal cancer patients have 60.8% survival rate after surgery. Studies from other developing countries like Iran reported that the 5-year survival rates of colorectal cancer falls between 27.2% and 61% [22] which are comparatively higher than our current finding.

Mostly, the stage of a cancer at diagnosis influences survival. For colorectal cancer stage, the five-year survival rates varies from 90% for localized cancers, 70% for regional cancers, and 10% for distant metastatic cancers [1]. In this study, the overall survival rates based on CRC TNM staging were 90% for stage I, 34% for stage II, 12% for stage III and 0.0% for stage IV (Fig 3). The difference in survival rate among the different cancer stages using log rank test was statistically significant (p = 0.0001). A study by Al-Ahwal et al., (2013) in Saudi Arabia recorded 63.3% for patients with stage 1 cancers, 50.2% for those with stage 2&3 cancers, and 14.7% for patients stage 4 cancers which are slightly comparable to our findings [23], The

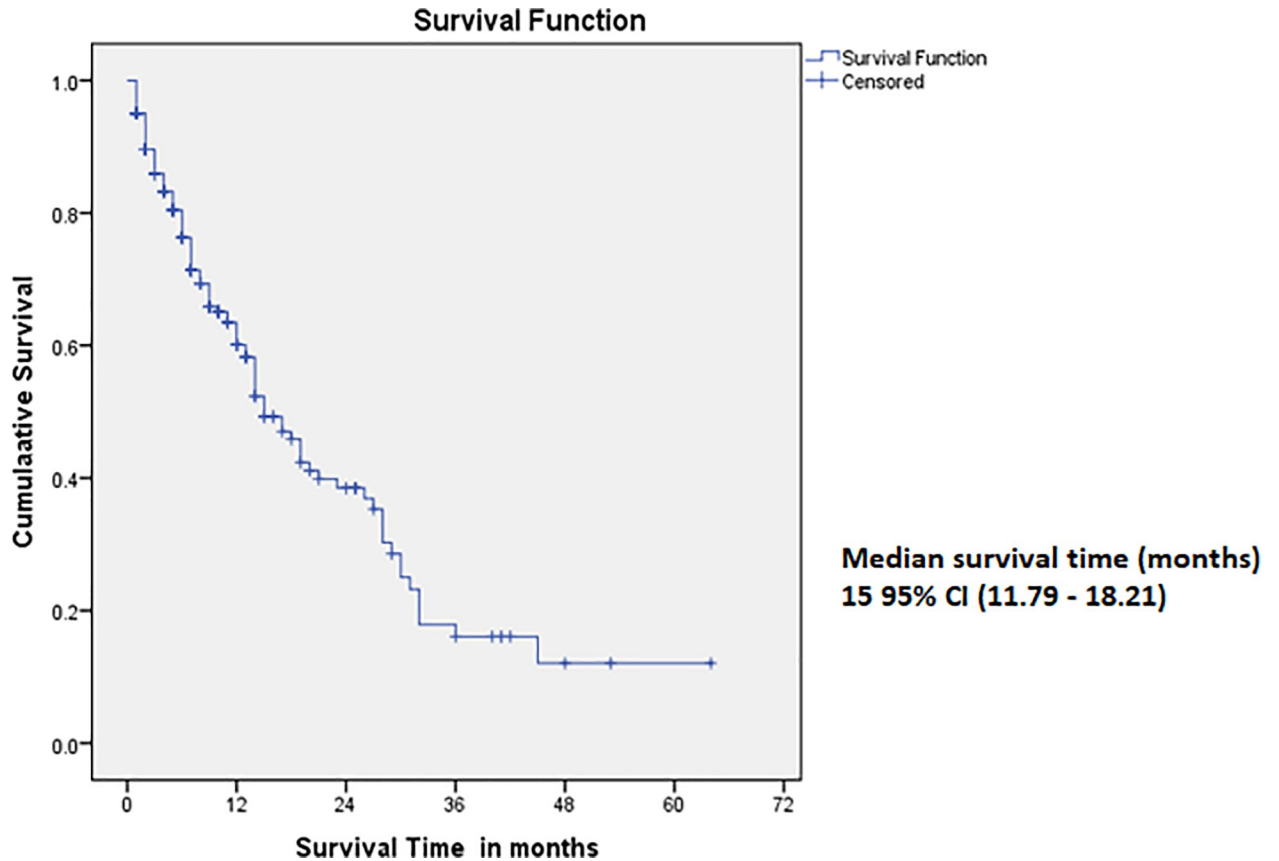


Fig 2. Overall 5 year’s survival function curve in colorectal cancer patients at KATH.

<https://doi.org/10.1371/journal.pone.0209307.g002>

lower survival rates observed in this study could be due to the lack of interventions such as screening programmes and public education on cancer prevention, inaccessibility to specialised centers and lack of effective modernised diagnostic techniques for efficient diagnosis and prognosis. Improved life expectancy accompanied with the adoption of sedentary lifestyle and unhealthy dietary habits among Ghanaians have resulted in the rise in the incidence of various cancer including colorectal cancer leading to the high demand for quality cancer care. Studies have also shown that patients mostly present with late stage cancers that are mostly incurable [16] therefore resulting in poorer treatment outcome for patients with colorectal cancers. Late presentation could be due to lack of education on the signs and symptoms of colorectal cancer among the populace, lack of screening programmes for early detection and the fact that most people might be oblivious of the importance of early reporting to hospital for diagnosis and treatment. With colorectal cancer, prognosis is mostly determined by the characteristics of the tumour and some patients related factors. Knowledge of these prognostic factors could help physicians immensely to improve clinical outcomes [24]. Family history was significantly associated with improved survival ($p = 0.036$) in both the log rank test and the cox regression model (Tables 1 and 3). This is consistent with findings from [25] who reported that patients who have family history of colorectal cancer have overall improved survival compared to those who developed that cancer due to lifestyle factors but not necessarily due to heredity. The reason could be that, patients with family history of the disease are aware of their risk factor, and thus seek early medical intervention and treatments which improves their life expectancy as compared to sporadic cases.

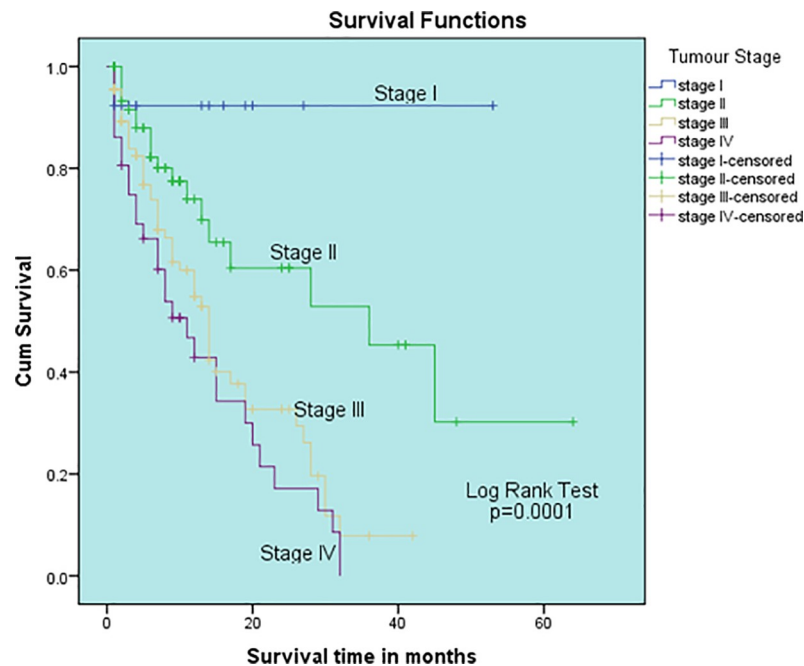


Fig 3. Cumulative survival of CRC based on the cancer stage.

<https://doi.org/10.1371/journal.pone.0209307.g003>

Numerous studies report on the role of patient’s gender as a prognostic factor in colorectal cancer, but in most of these studies, gender played no significant role in predicting survival [26–28] which is consistent with findings from our current study. In this study, age was not identified as a prognostic factor for survival. This agrees with several other studies [29–31]. However, some other studies found age as prognostic factor for poor survival in older patients than younger ones. [26, 28, 32], In keeping with Akhood et al., (2011), our study could not approve a significant relationship between survival rate and marital status [33].

Chemotherapy as a treatment modality was significantly related to improved survival whereas having chemo-radiotherapy or radio-chemotherapy was associated with poor survival (Table 4). Most patients with stage III disease are administered chemotherapy after surgery [34]. Such treatment mostly classified as “adjuvant” helps to improve disease outcome by destroying microscopic cancer cells which could have accumulated and developed into larger tumours. This combined therapy has been proven to be effective in enhancing survival by 15–20%. [35]. This explanation supports our finding that chemotherapy is associated with improved survival. A study by Kumar et al., (2015) in Oman found BMI and chemotherapy as independent risk factors of CRC, this supports the findings in this study [36]. There have been conflicting findings on the association between BMI and colorectal cancer survival. A recent meta-analysis reported that being obese before diagnosis of CRC ($BMI \geq 30 \text{ kg/m}^2$) was significantly associated with poorer survival [37]. A retrospective study by Tang et al (2016) also found that, being underweight before treatment was associated with an increase risk of death whereas overweight and obesity were favourable prognostic factors for overall survival in metastatic cancer patients [38]. Similarly, our study found that being underweight after diagnosis was significantly associated with poor survival whereas being overweight or obese was more favourable. On the contrary, Boyle et al., (2013) reported, post diagnostic overweight or obesity was associated with poorer survival in colorectal cancer patients [39]. There is a link between obesity and numerous cancer incidences, but in terms of survival, studies have proposed that increasing levels of insulin and insulin-like growth factors as well as increasing insulin

resistance in obesity may negatively influence colorectal cancer survival. [40]. It is therefore advisable that colorectal cancer patients maintain a healthy normal weight which will help to improve their survival.

In this present study, the stage of tumor was associated with worse survival (Table 5). This is consistent with several studies [13, 41] that have demonstrated that advanced tumour stage is a prognostic factor associated with poor survival in patients with CRC. Findings from this study showed that, the state of regional lymph node metastasis was a significant prognostic factor for poor survival, which concurs with findings observed by other studies [42, 43]. Cox proportional hazard model in this current study revealed that, distant metastasis was significantly associated with poor survival (Table 5). This finding is supported by many other studies [44, 45] which also identified distance metastasis as a significant factor for poor survival. Other studies have observed a significant relationship between extent of tumour infiltration and prognosis [44, 46], this trend was also observed in this current study. The extent of tumour infiltration into the intestinal wall, lymph nodes and distant organs strongly influences the survival prospects of colorectal cancer patients and also forms the basis for staging as well as treatment options for patients. [9].

Information on some of the study subjects were unavailable because of the retrospective nature of the study. Patients who were diagnosed and treated only at KATH were included in this study, hence this may not be a true reflection of the situation in the entire population, although almost all oncological cases from the Northern and Central sectors of Ghana are referred to KATH for management. In spite of these limitations, the study has provided useful information that can help to direct Ghana cancer control strategy in order to improve cancer survival and help health practitioners in the management of patients with colorectal cancer.

Conclusion

The survival rate of colorectal cancer is very low in Ghana. Significant clinical and pathological prognostic factors were; family history, chemotherapy, both chemo and radiotherapy, BMI, TNM tumour stage, Depth of tumour invasion, lymph node metastasis, distance metastasis. Therefore, this study highlights the need for intensified public health education to promote awareness about the signs and symptoms of colorectal cancer and comprehensive screening programmes which will greatly improve survival through early detection. Furthermore, molecular studies should be done to identify potential molecular markers for an improved and effective treatment in the Ghanaian population.

Supporting information

S1 Dataset. Excel sheet of dataset on which conclusions of this manuscript were made.
(XLSX)

S1 Table. Analyses comparing characteristics of patients who were follow-up to those who were not followed.
(DOCX)

S1 File. STROBE checklist cohort.
(DOC)

Acknowledgments

Gratitude goes to workers at the records unit and authorities at the Department of Surgery and Oncology, Komfo Anokye Teaching Hospital and Department of Molecular Medicine, KNUST, Kumasi-Ghana

Author Contributions

Conceptualization: Francis Agyemang-Yeboah, Joseph Yorke, Christian Obirikorang, Emmanuella Nsenbah Batu.

Data curation: Francis Agyemang-Yeboah, Joseph Yorke, Christian Obirikorang, Emmanuella Nsenbah Batu, Emmanuel Acheampong, Emmanuel Amankwaa Frimpong.

Formal analysis: Francis Agyemang-Yeboah, Christian Obirikorang, Emmanuella Nsenbah Batu, Emmanuel Acheampong, Enoch Odame Anto, Bright Amankwaa.

Investigation: Joseph Yorke, Emmanuella Nsenbah Batu, Emmanuel Amankwaa Frimpong.

Methodology: Emmanuella Nsenbah Batu, Emmanuel Acheampong, Emmanuel Amankwaa Frimpong, Enoch Odame Anto.

Software: Christian Obirikorang, Emmanuella Nsenbah Batu, Emmanuel Acheampong.

Supervision: Francis Agyemang-Yeboah, Joseph Yorke, Christian Obirikorang, Emmanuella Nsenbah Batu.

Validation: Christian Obirikorang, Emmanuella Nsenbah Batu, Emmanuel Acheampong.

Visualization: Emmanuella Nsenbah Batu.

Writing – original draft: Francis Agyemang-Yeboah, Joseph Yorke, Christian Obirikorang, Emmanuella Nsenbah Batu, Emmanuel Acheampong, Emmanuel Amankwaa Frimpong, Enoch Odame Anto, Bright Amankwaa.

Writing – review & editing: Francis Agyemang-Yeboah, Joseph Yorke, Christian Obirikorang, Emmanuella Nsenbah Batu, Emmanuel Acheampong, Emmanuel Amankwaa Frimpong, Enoch Odame Anto, Bright Amankwaa.

References

1. Haggard FA, Boushey RP: Colorectal cancer epidemiology: incidence, mortality, survival, and risk factors. *Clinics in colon and rectal surgery* 2009, 22(4):191. <https://doi.org/10.1055/s-0029-1242458> PMID: 21037809
2. Köhne C-H, Kretzschmar A, Wils J: First-Line chemotherapy for colorectal carcinoma—we are making progress. *Oncology Research and Treatment* 1998, 21(4):280–289.
3. El Zouhairi M, Charabaty A, Pishvaian MJ: Molecularly targeted therapy for metastatic colon cancer: proven treatments and promising new agents. *Gastrointestinal cancer research: GCR* 2011, 4(1):15. PMID: 21464866
4. Jackson-Thompson J, Ahmed F, German RR, Lai SM, Friedman C: Descriptive epidemiology of colorectal cancer in the United States, 1998–2001. *Cancer* 2006, 107(S5):1103–1111.
5. Boyle P, Langman J: ABC of colorectal cancer: Epidemiology. *BMJ: British Medical Journal* 2000, 321(7264):805. PMID: 11009523
6. De Divitiis C, Nasti G, Montano M, Fisichella R, Iaffaioli RV, Berretta M: Prognostic and predictive response factors in colorectal cancer patients: between hope and reality. *World Journal of Gastroenterology: WJG* 2014, 20(41):15049. <https://doi.org/10.3748/wjg.v20.i41.15049> PMID: 25386053
7. Marzouk O, Schofield J: Review of histopathological and molecular prognostic features in colorectal cancer. *Cancers* 2011, 3(2):2767–2810. <https://doi.org/10.3390/cancers3022767> PMID: 24212832
8. Amersi F, Agustin M, Ko CY: Colorectal cancer: epidemiology, risk factors, and health services. *Clinics in colon and rectal surgery* 2005, 18(03):133–140. <https://doi.org/10.1055/s-2005-916274> PMID: 20011296
9. Compton CC, Greene FL: The staging of colorectal cancer: 2004 and beyond. *CA: a cancer journal for clinicians* 2004, 54(6):295–308.
10. Roncucci L, Fante R, Losi L, Di Gregorio C, Micheli A, Benatti P, et al.: Survival for colon and rectal cancer in a population-based cancer registry. *European Journal of Cancer* 1996, 32(2):295–302.

11. Wiggers T, Arends JW, Volovics A: Regression analysis of prognostic factors in colorectal cancer after curative resections. *Diseases of the colon & rectum* 1988, 31(1):33–41.
12. Griffin MR, Bergstralh EJ, Coffey RJ, Beart RW, Melton LJ: Predictors of survival after curative resection of carcinoma of the colon and rectum. *Cancer* 1987, 60(9):2318–2324. PMID: [3440238](#)
13. Ghazali AK, Musa KI, Naing NN, Mahmood Z: Prognostic factors in patients with colorectal cancer at Hospital Universiti Sains Malaysia. *Asian Journal of Surgery* 2010, 33(3):127–133. [https://doi.org/10.1016/S1015-9584\(10\)60022-X](https://doi.org/10.1016/S1015-9584(10)60022-X) PMID: [21163410](#)
14. Chalya PL, Mchembe MD, Mabula JB, Rambau PF, Jaka H, Koy M, et al.: Clinicopathological patterns and challenges of management of colorectal cancer in a resource-limited setting: a Tanzanian experience. *World J Surg Oncol* 2013, 11(2).
15. Badoe E: Malignant disease of gastrointestinal tract in Korle Bu Hospital, Accra, Ghana, 1956–65. *The West African medical journal* 1966, 15(5):181. PMID: [5977809](#)
16. Dakubo J, Naaeder S, Tettey Y, Gyasi R: Colorectal carcinoma: an update of current trends in Accra. *West African journal of medicine* 2010, 29(3).
17. Laryea DO, Awuah B, Amoako YA, Osei-Bonsu E, Dogbe J, Larsen-Reindorf R, et al.: Cancer incidence in Ghana, 2012: evidence from a population-based cancer registry. *BMC cancer* 2014, 14(1):1.
18. Naaeder S, Archampong E: Cancer of the colon and rectum in Ghana: A 5-year prospective study. *British journal of surgery* 1994, 81(3):456–459. PMID: [8173930](#)
19. McArdle C, Hole D, Hansell D, Blumgart L, Wood C: Prospective study of colorectal cancer in the West of Scotland: 10-year follow-up. *British Journal of Surgery* 1990, 77(3):280–282. PMID: [1691033](#)
20. Faivre-Finn C, Bouvier-Benhamiche A, Phelip J, Manfredi S, Dancourt V, Faivre J: Colon cancer in France: evidence for improvement in management and survival. *Gut* 2002, 51(1):60–64. PMID: [12077093](#)
21. Sankaranarayanan R, Swaminathan R, Jayant K, Brenner H: An overview of cancer survival in Africa, Asia, the Caribbean and Central America: the case for investment in cancer health services. *IARC Sci Publ* 2011, 162:257–291.
22. Mehrabani D, Almasi-Hashiani A, Moshfeghi K, Khedmati E: Survival rate and its predictors in colorectal cancer patients, Southern Iran. *Middle East J Sci Res* 2012, 12(8):1072–1077.
23. Al-Ahwal MS, Shafik YH, Al-Ahwal HM: First national survival data for colorectal cancer among Saudis between 1994 and 2004: what's next? *BMC Public Health* 2013, 13(1):1.
24. Alici S, Kaya S, Izmirli M, Tuncer I, Ozbek H, Sayarlioglu H: Analysis of survival factors in patients with advanced-stage gastric adenocarcinoma. *Medical science monitor* 2006, 12(5):CR221–CR229. PMID: [16641880](#)
25. Zell JA, Honda J, Ziogas A, Anton-Culver H: Survival after colorectal cancer diagnosis is associated with colorectal cancer family history. *Cancer Epidemiology Biomarkers & Prevention* 2008, 17(11):3134–3140.
26. Rosenberg R, Friederichs J, Schuster T, Gertler R, Maak M, Becker K, et al.: Prognosis of patients with colorectal cancer is associated with lymph node ratio: a single-center analysis of 3026 patients over a 25-year time period. *Annals of surgery* 2008, 248(6):968–978. <https://doi.org/10.1097/SLA.0b013e318190eddc> PMID: [19092341](#)
27. Saha A, Smith K, Sue-Ling H, Sagar P, Burke D, Finan P: Prognostic factors for survival after curative resection of Dukes' B colonic cancer. *Colorectal Disease* 2011, 13(12):1390–1394. <https://doi.org/10.1111/j.1463-1318.2010.02507.x> PMID: [21073647](#)
28. Moghimi-Dehkordi B, Safaee A, Zali MR: Prognostic factors in 1,138 Iranian colorectal cancer patients. *International journal of colorectal disease* 2008, 23(7):683–688. <https://doi.org/10.1007/s00384-008-0463-7> PMID: [18330578](#)
29. Moghimi-Dehkordi B, Safaee A: An overview of colorectal cancer survival rates and prognosis in Asia. *World J Gastrointest Oncol* 2012, 4(4):71–75. <https://doi.org/10.4251/wjgo.v4.i4.71> PMID: [22532879](#)
30. Gharbi O, Chabchoub I, Limam S, Hochlef M, Ben FL, Landolsi A, et al.: [Prognostic factors and survival of metastatic colorectal cancer in the Sousse University Hospital (Tunisia): comparative study of two treatment period of 200 patients]. *Bulletin du cancer* 2010, 97(4):445–451. <https://doi.org/10.1684/bdc.2010.1083> PMID: [20385519](#)
31. Zhang S, Gao F, Luo J, Yang J: Prognostic factors in survival of colorectal cancer patients with synchronous liver metastasis. *Colorectal Disease* 2010, 12(8):754–761. <https://doi.org/10.1111/j.1463-1318.2009.01911.x> PMID: [19508508](#)
32. Mehrkhani F, Nasiri S, Donboli K, Meysamie A, Hedayat A: Prognostic factors in survival of colorectal cancer patients after surgery. *Colorectal Disease* 2009, 11(2):157–161. <https://doi.org/10.1111/j.1463-1318.2008.01556.x> PMID: [18462239](#)

33. Akhoond M, Kazemnejad A, Hajizadeh E, Fatemi S, Motlagh A: Investigation of Influential Factors Affecting Survival Rate of Patients with Colorectal Cancer using Copula Function. *Iranian Journal of Epidemiology* 2011, 6(4):40–49.
34. Ragnhammar P, Hafstrom L, Nygren P, Glimelius B: A systematic overview of chemotherapy effects in colorectal cancer. *Acta oncologica (Stockholm, Sweden)* 2001, 40(2–3):282–308.
35. Glimelius B, Dahl O, Cedermark B, Jakobsen A, Bentzen SM, Starkhammar H, et al.: Adjuvant chemotherapy in colorectal cancer: a joint analysis of randomised trials by the Nordic Gastrointestinal Tumour Adjuvant Therapy Group. *Acta oncologica* 2011.
36. Kumar S, Burney IA, Zahid KF, Souza PCD, Belushi MA, Meki TDMWA, et al.: Colorectal cancer patient characteristics, treatment and survival in Oman—a single center study. *Asian Pac J Cancer Prev* 2015, 16:4853–4858. PMID: [26163603](#)
37. Lee J, Meyerhardt JA, Giovannucci E, Jeon JY: Association between body mass index and prognosis of colorectal cancer: a meta-analysis of prospective cohort studies. *PLoS one* 2015, 10(3):e0120706. <https://doi.org/10.1371/journal.pone.0120706> PMID: [25811460](#)
38. Tsang NM, Pai PC, Chuang CC, Chuang WC, Tseng CK, Chang KP, et al.: Overweight and obesity predict better overall survival rates in cancer patients with distant metastases. *Cancer medicine* 2016.
39. Boyle T, Fritschi L, Platell C, Heyworth J: Lifestyle factors associated with survival after colorectal cancer diagnosis. *British journal of cancer* 2013, 109(3):814–822. <https://doi.org/10.1038/bjc.2013.310> PMID: [23787918](#)
40. Vrieling A, Kampman E: The role of body mass index, physical activity, and diet in colorectal cancer recurrence and survival: a review of the literature. *The American journal of clinical nutrition* 2010:ajcn.29005.
41. Bufalari A, Giustozzi G, Burattini MF, Servili S, Bussotti C, Lucaroni E, et al.: Rectal cancer surgery in the elderly: a multivariate analysis of outcome risk factors. *Journal of surgical oncology* 2006, 93(3):173–180. <https://doi.org/10.1002/jso.20300> PMID: [16482596](#)
42. Liang J, Wan D, Pan Z, Zhou Z, Chen G, Li L, et al: Multivariate regression analysis of recurrence following curative surgery for colorectal cancer. *Ai zheng = Aizheng = Chinese journal of cancer* 2004, 23(5):564–567. PMID: [15142455](#)
43. Compton CC, Fielding LP, Burgart LJ, Conley B, Cooper HS, Hamilton SR, et al.: Prognostic factors in colorectal cancer: College of American Pathologists consensus statement 1999. *Archives of pathology & laboratory medicine* 2000, 124(7):979–994.
44. He W, Wang L, Hu H, Kang S, Qian H, Xu F: Correlation of invasion, metastasis, and prognosis in low and middle rectal cancer. *Ai zheng = Aizheng = Chinese journal of cancer* 2002, 21(11):1222–1225. PMID: [12526220](#)
45. Oya M, Takahashi S, Okuyama T, Yamaguchi M, Ueda Y: Synchronous colorectal carcinoma: clinico-pathological features and prognosis. *Japanese journal of clinical oncology* 2003, 33(1):38–43. PMID: [12604723](#)
46. Safaee A, Moghimi_dehkordi B, Fatemi S, Ghiasi S, Zali M: Pathology and prognosis of colorectal cancer. *Iranian Journal of cancer prevention* 2012, 2(3):137–141.