

Clinical Study

Liver Transplantation for Hepatocellular Carcinoma: A Single Center Resume Overlooking Four Decades of Experience

Nikos Emmanouilidis,¹ Rickmer Peters,¹ Bastian P. Ringe,¹
Zeynep Güner,¹ Wolf Ramackers,¹ Hüseyin Bektas,¹ Frank Lehner,¹
Michael Manns,² Jürgen Klempnauer,¹ and Harald Schrem^{1,3}

¹Department of General, Visceral and Transplant Surgery, Hannover Medical School, Carl Neuberg Strasse 1, 30625 Hannover, Germany

²Department of Gastroenterology, Hepatology and Endocrinology, Hannover Medical School, Carl Neuberg Strasse 1, 30625 Hannover, Germany

³IFB-TX Core Facility and HTA, Hannover Medical School, Carl Neuberg Strasse 1, 30625 Hannover, Germany

Correspondence should be addressed to Nikos Emmanouilidis; emmanouilidis.nikos@mh-hannover.de

Received 29 September 2015; Accepted 3 December 2015

Academic Editor: Gaetano Ciancio

Copyright © 2016 Nikos Emmanouilidis et al. This is an open access article distributed under the Creative Commons Attribution License, which permits unrestricted use, distribution, and reproduction in any medium, provided the original work is properly cited.

Background. This is a single center oncological resume overlooking four decades of experience with liver transplantation (LT) for hepatocellular carcinoma (HCC). **Methods.** All 319 LT for HCC that were performed between 1975 and 2011 were included. Predictors for HCC recurrence (HCCR) and survival were identified by Cox regression, Kaplan-Meier analysis, Log Rank, and χ^2 -tests where appropriate. **Results.** HCCR was the single strongest hazard for survival ($\exp(B) = 10.156$). Hazards for HCCR were tumor staging beyond the histologic MILAN ($\exp(B) = 3.645$), bilateral tumor spreading ($\exp(B) = 14.505$), tumor grading beyond G2 ($\exp(B) = 8.668$), and vascular infiltration of small or large vessels ($\exp(B) = 11.612$, $\exp(B) = 18.324$, resp.). Grading beyond G2 ($\exp(B) = 10.498$) as well as small and large vascular infiltrations ($\exp(B) = 13.337$, $\exp(B) = 16.737$, resp.) was associated with higher hazard ratios for long-term survival as compared to liver transplantation beyond histological MILAN ($\exp(B) = 4.533$). Tumor dedifferentiation significantly correlated with vascular infiltration ($\chi^2 p = 0.006$) and intrahepatic tumor spreading ($\chi^2 p = 0.016$). **Conclusion.** LT enables survival from HCC. HCC dedifferentiation is associated with vascular infiltration and intrahepatic tumor spreading and is a strong hazard for HCCR and survival. Pretransplant tumor staging should include grading by biopsy, because grading is a reliable and easily accessible predictor of HCCR and survival. Detection of dedifferentiation should speed up the allocation process.

1. Introduction

The repertoire of treatment strategies for hepatocellular carcinoma (HCC) consists of liver resection (LR), chemotherapy (CTX), radio frequency ablation (RFA), transarterial chemoperfusion (TACP), selective internal radiation therapy (SIRT), transarterial chemoembolisation (TACE), percutaneous ethanol instillation (PEI), monoclonal antibody therapy (mAB), and liver transplantation (LT).

The first elective liver resections were performed in the late 19th century [1–3], but although Wendel [4] already performed a successful anatomic right hemihepatectomy for

a HCC in 1911, it took another 50 years and a better understanding of the liver anatomy [5] before liver resections were performed on a larger scale by multiple centers worldwide [6–10]. The first liver transplantation for a “hepatoma” was the second LT that was published in the pioneering report by Starzl et al. in 1963 [11]. A decade later Cyclosporin [12] was introduced as a new immunosuppressant and in the following years larger series of liver transplantations were accumulated [13, 14]. The early survival analyses of LT for HCC though were rather disappointing [15] with 2-year survival rates of 25–30% compared to 70% for benign diseases [16, 17]. Those disappointing results ignited the development

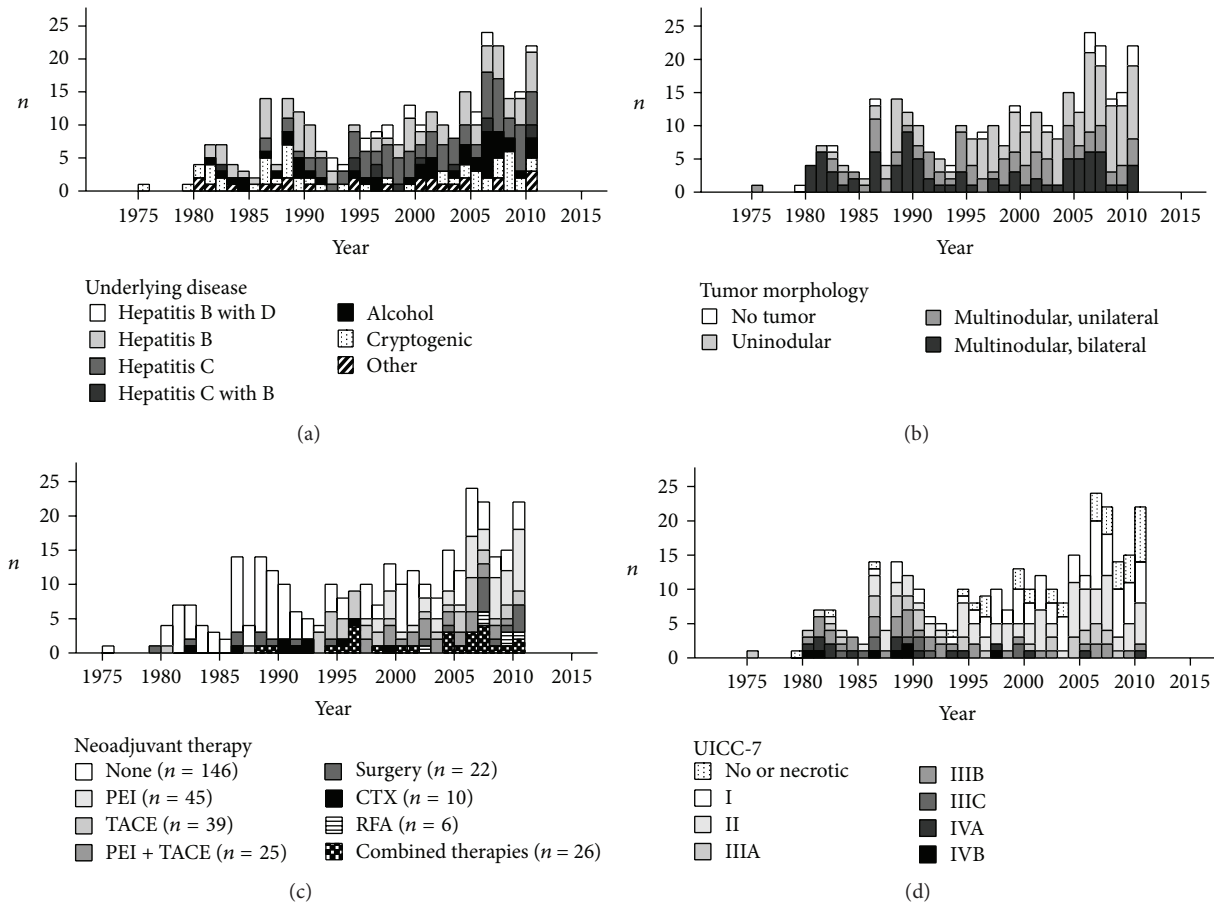


FIGURE 1: Annual proportions of underlying diseases (a), neoadjuvant therapies (b), UICC-7 staging (c), and tumor morphologies (d). (a) There was no significant change in annual proportions of recipients underlying diseases over time. (b) Tumor morphologies of transplanted HCC changed over time in the favour of uninodular and unilateral tumors. (c) The overall rate for neoadjuvant therapy as well as the diversity of different treatment combinations increased over time. This effect was caused due to new therapies that were introduced consecutively from 1975 to 2010 (surgery (S), chemotherapy (CTX), transarterial chemoembolisation (TACE), percutaneous ethanol instillation (PEI), selective internal radiation therapy (SIRT), and monoclonal antibodies (mAB)). (d) Between 1975 and 2010 the proportion of low graded UICC-7 staged tumors increased significantly.

of nonsurgical treatment alternatives for HCC: starting with systemic chemotherapy and transarterial chemoperfusion [18] on an experimental scale in the early 1980s. A decade later SIRT [19], TACE [20, 21], and PEI [22] were introduced and another ten years later RFA [23] was added (Figure 1(c)). The latest development was the introduction of monoclonal antibody therapy in 2008 [24, 25].

Covariates which possibly affect HCC recurrence (HCCR) and survival after LT are underlying liver disease [26], tumor size [27], grading [28], tumor multifocality, vascular invasion [26, 29], α -fetoprotein [30], and adjuvant or neoadjuvant therapy [27, 31, 32]. But despite extensive and long experience with LT for HCC there are very few reports with follow-up data of more than a decade [13, 33–36]. Most long-term reports cover only 5 years of follow-up [27, 28, 32, 37–43].

Here we report our long-term single center experience of more than four decades with all consecutive patients ($n = 319$) who received LT for HCC between 19th November 1975 and 12th December 2010. The main focus of this study

was the oncological long-term aspects and the value of liver transplantation for the treatment of HCC.

2. Patients and Methods

2.1. Patients. Diagnosis of HCC was verified before LT and/or at the histological examination of the explanted liver ($n = 319$). The mean follow-up was 6.4 years (median 4.8 years, range 0.2 to 30.9 years). Follow-up with respect to time from last contact to query in relation to time of LT to query was completed in 96% (median 100%, range 4 to 100%). Time span of last contact to query in living patients was 0.5 to 29.4 years (median 5.9 years). Table 2 summarizes the clinical data of the investigated cohort.

2.2. Immunosuppressive Therapy. Early transplantations were performed under protection with Azathioprine and Corticosteroids medication. Next step in immunosuppressive evolution was the introduction of the Calcineurin-inhibitor

Cyclosporin A (CsA). Combinations of CsA with Corticosteroids and even triple therapies with CsA, Azathioprine, and Corticosteroids were applied. Then FK-506—another Calcineurin-inhibitor—was introduced and added to the portfolio of immunosuppressants. The combination of FK-506 with Corticosteroids was a common replacement therapy for the standard protocol of CsA plus Corticosteroids. Azathioprine was only scarcely used, until it completely disappeared as a standard medication in solid organ transplantation. Another significant improvement was the introduction of Mycophenolate Mofetil, which was mainly used as a triple supplement in order to reduce the dosage of Calcineurin-inhibitor medications, because it was realized that the Calcineurin-inhibitor nephrotoxicity was a significant problem in the long run. Other additional immunosuppressants in recent years were the mTOR inhibitors sirolimus (Rapamycin) and everolimus (RAD-001) and the CTLA-4 antibody belatacept (LEA29Y). The latter ones were applied mainly as study drugs within multicenter trials and thus were not commonly used. Overall, the high level of diversity in applied immunosuppressive therapies in this cohort of patients not only is caused by the number of different immunosuppressants and their combinations but is even more diversified due to different dosages and even therapy changes in individual patients during follow-up.

Today's standard treatments in liver transplantation at our facility consist of Corticosteroids (prednisolone, methylprednisolone), basiliximab (only perioperatively), Mycophenolate Mofetil, and the Calcineurin-inhibitor FK-506.

2.3. Tumor Morphology, UICC-7 Staging, and "Inside/Outside" hMILAN Categorization. All tumors were retrospectively restaged according to the pathohistological examination of the explanted liver and following the 7th edition of the UICC classification (UICC-7). For tumor morphology we also categorized each tumor into either nondetectable, uninodular, multinodular/unilateral or multinodular/bilateral intrahepatic tumor spreading. This categorization as well as the categorization referring to MILAN criteria was done on the basis of the histopathological reports in order to circumvent the otherwise unavoidable bias by the technological development of imaging techniques during the last forty years. The retrospective classification either as "inside" or as "outside" MILAN was defined as *histological MILAN (hMILAN)*. The preoperative MILAN classification, which is usually commonly applied for the listing of HCC patients and carried out by imaging technologies, is renamed *iMILAN* for discrimination purposes.

2.4. Survival Data und HCC Recurrence (HCCR). HCCR and survival were checked in close cooperation with the German national cancer registry and the German national address registry and by continued follow-up in our outpatient transplant clinics. Data were complemented by targeted interviews of referring physicians if necessary. Descriptive statistics related to HCC recurrence and HCC recurrence related deaths are summarized in Tables 3 and 4.

2.5. Statistical Analysis. Statistical analyses were performed using SPSS v23 (PASW Statistics Inc., IBM, Somers, NY, USA). *p* values and hazards for survival and HCC recurrence (HCCR) were calculated by multi- or univariate Cox regression. Covariate hazards of survival were *underlying disease, UICC-7 staging, hMILAN status, vascular infiltration, neoadjuvant therapy, and grading*. HCCR as a hazard for survival was included as a time-dependent covariate. Covariate hazards for HCCR were *underlying disease, UICC-7 staging, hMILAN status, vascular infiltration, neoadjuvant therapy, and grading*. *p* values below 0.05 were defined as significant. Hazards ($\exp(B)$) > 1.0 indicated a higher risk and hazards ($\exp(B)$) < 1.0 indicated lower risk for HCCR or death. Survival data and HCCR data were graphically plotted using Kaplan-Meier statistics. Comparison of cohort identifiers was performed using a χ^2 -test.

3. Results

3.1. Descriptive Statistics. Table 2 shows the descriptive statistics of the population of all $N = 319$ patients that had been transplanted with the diagnosis of HCC between 1975 and 2010. Mean age at time of LT was 51.0 years (\pm SD 12.5) with a median of 54.1 and a male-to-female ratio of 3:1. Predominant underlying diseases were hepatitis C ($n = 86$; 27%), hepatitis B ($n = 85$; 27%), hepatitis B with D ($n = 15$; 5%), hepatitis C with B ($n = 12$; 4%), alcohol ($n = 47$; 15%), and cryptogenic cirrhosis ($n = 50$, 16%). Neither NAFLD (nonalcoholic fatty liver disease) nor NASH (nonalcoholic steatohepatitis) was a standard terminology used for enlisting patients for LT at our transplant center. But it can be assumed that the group of cryptogenic cirrhosis also includes those forms of cirrhosis. Other underlying diseases or codiseases ($n = 24$; 8%) were juvenile hepatoblastoma, adenomatosis, hypertyrosinemia, Wilson's disease, hemochromatosis, α 1 antitrypsin deficiency, Budd Chiari syndrome, androgen therapy, biliary cirrhosis, autoimmune hepatitis, and chronic lead intoxication (Table 2). There was no significant change in the category of underlying diseases over time (Figure 1(a)). Most HCC tumors had a multinodular morphology ($n = 166$; 52%). This category of multinodular tumors was divided into multinodular/unilateral tumors ($n = 79$; 25%) and multinodular/bilateral tumors ($n = 87$; 27%). Uninodular HCCs were observed in $n = 133$ (42%) patients. There was also a significant proportion of pretreated patients in whom no HCC could be detected at the histological examination of the explanted recipients livers ($n = 20$; 6%). The largest tumor had a volume of 14137 cm³ and the smallest tumor had a volume of 2 cm³ (mean = 320 cm³, median = 31.4 cm³). AFP measured before LT had a range from 0 to 214975 ng/mL (mean = 2513 ng/mL, median = 21 ng/mL). Living related transplantations were performed in $n = 12$ (4%) recipients. Split-liver transplantations were performed in $n = 19$ (6%) patients and partial/reduced size transplantations in $n = 13$ (4%) patients. Cold ischemic time ranged from 100 to 1970 minutes (mean = 624 minutes, median = 611 minutes). Twenty-nine patients (9.1%) received a second LT and one patient received an additional third LT. Two patients

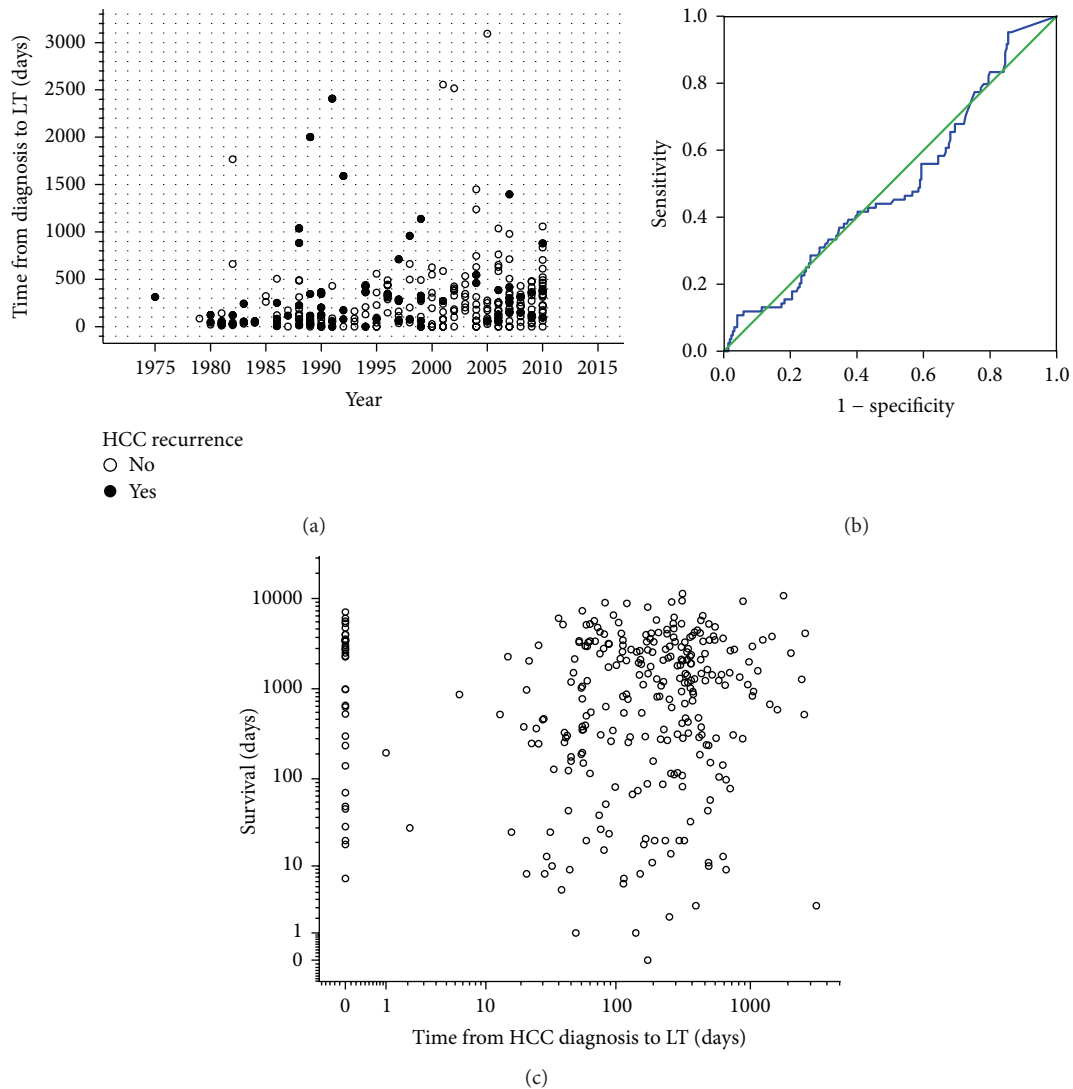


FIGURE 2: Development of waiting time (a) from 1975 to 2010 and prognostic impact of waiting time on HCC recurrence (b) and overall survival (c). Waiting time increased slightly from about 2-3 months in the early 1980s to an average of 411 days in 2010, but this increase had no significant prognostic impact on HCC recurrence (ROC AUC = 0.494; $\chi^2 p = 0.319$) and overall survival ($\sigma^2 p = 0.279$).

were retransplanted after diagnosis of intrahepatic HCCR, which occurred at 5.7 and 8.8 years after primary liver transplantation. Time from HCCR to retransplantations was 61 and 499 days, respectively. One patient is still alive with a tumor-free survival after second LT of 18.7 years. The second patient died at 2.2 years after second LT due to multilocal 2nd HCCRs at lungs, liver, and abdominal wall and with a peritoneal seeding.

All other retransplants were not related to HCCR. From 1975 to 2010 by and by several HCC pretreatments were developed (*surgery (S)*, *chemotherapy (CTX)*, *transarterial chemoembolisation (TACE)*, *percutaneous ethanol instillation (PEI)*, *selective internal radiation therapy (SIRT)*, and *monoclonal antibodies (mAB)*) and the overall rate of patients who were pretreated before LT and the diversity of treatment combinations increased synchronously (Figure 1(c)). The number of advanced multinodular HCCs and tumors

with intrahepatic bilateral spread declined significantly over the years in favour of singular node HCCs (Figure 1(b)) and the proportion of successfully pretreated HCC (tumor necrotic, no tumor detectable) increased (Figure 1(d)).

Waiting time (time from HCC diagnosis to LT) increased slightly during the decades, but this had no significant influence on HCC recurrence or survival (ROC AUC = 0.494; $\chi^2 p = 0.319$; $\chi^2 p = 0.279$, resp.) (Figures 2(a)–2(c)).

In 285 patients HCC diagnosis was known prior to LT, while in 34 patients the diagnosis of HCC was coincidental. 173 patients were pretreated before LT by surgery ($n = 22$), TACE ($n = 39$), RFA ($n = 6$), PEI ($n = 45$), CTX ($n = 10$), or combinations of each ($n = 41$) (Figure 4). PEI, TACE, and surgery represented the dominant choices of pretreatment strategies. The tumor response to mono- or multimodal neoadjuvant therapies is shown in Figure 4(b). PEI and TACE were comparable in terms of remaining vital tumor tissue

TABLE 1: In- and excluded subpopulations for the analysis of HCC recurrence and HCC recurrence related deaths.

Subpopulations (hospital mortality excluded)	Cox regression analysis for the risk of		HCC recurrence	
	HCC recurrence (Table 5)	HCC recurrence related deaths (Table 6)	No	Yes
Alive, $n = 136$	Included	Included	125	11
Deaths caused by HCCR, $n = 63$	Included	Included	0	63
Deaths <i>not</i> caused by HCCR, $n = 52$	Included	Excluded	43	9
Overall	251	199	168	83

(Fisher's exact test $p = 0.439$). Therapy efficacy though was not comparable one-on-one because of a significant higher overall proportion of multinodular tumors in the TACE group and different proportions of multinodular/bilateral HCCs, which was three times as high for the TACE groups as compared to the PEI group (26% to 9%) (Figure 4(a)). Neoadjuvant therapy by surgery resulted in the highest rate of nondetectable tumors (45%) (10 of 19) (Figure 4(b)), but this difference was statistically not significant compared to the proportion of full-necrotic plus nondetectable tumors of the PEI group (Fisher's exact test $p = 0.099$). 178 patients (56%) were transplanted *inside* and 141 (44%) were transplanted *outside* hMILAN. Prior to the introduction of MILAN criteria (1997) 82 patients (65%) had been transplanted *outside* and 43 patients (34%) *inside* hMILAN. After 1997 59 patients (30%) were transplanted *outside* and 135 (70%) *inside* hMILAN. 16 (38%) of the 42 survivors who lived longer than 10 years and 6 of the 9 recipients (67%) who lived longer than 20 years after LT were transplanted *outside* hMILAN. Only one of those patients died, but not due to HCCR.

In order to have a clear analysis on HCC recurrence relevant data we censored all patients with perioperative hospital mortality ($n = 68$; 21%) (Table 1), who as a matter of course did not survive long enough for developing any HCCR. Eighty-three ($n = 83$; 33%) of the remaining 251 patients were diagnosed with HCCR during follow-up. Most HCCRs were solely extrahepatic tumor recurrences ($n = 48$; 58%). In 15 patients (18%) HCCR was diagnosed as exclusive *intrahepatic* tumor recurrences. In 20 patients (24%) HCCR was synchronously found in *intra-* and *extrahepatic* locations. In 34% ($n = 30$) of HCC recurrences metastases were found in more than one anatomic location. Dominant site of *extrahepatic* HCCR was the lung ($n = 34$), followed by bone ($n = 13$), lymph nodes ($n = 9$), and brain ($n = 7$) (Table 3). Sixty-three ($n = 63$; 76%) of the patients with HCC recurrences died due to this tumor recurrence and $n = 52$ (21%) patients died due to non-HCCR related reasons (Tables 1 and 4). Cox regression analysis was performed in order to calculate the odds ratios ($\exp(B)$) and significance levels of the tested covariates for their risk to be associated with HCC recurrence (Table 5). For a clear view on the prognostic oncological value of LT we had to purge the cohort of patients further by censoring any causes of death other than HCC recurrence related ones and analysed the cumulative survival rates of the remaining $n = 199$ patients with respect to the selected covariates (Tables 1 and 6; Figures 5(b), 7(a)–7(d), and 9(a)–9(f)). Thus, $n = 9$ patients with diagnosis of HCCR, but with mortality due to other reasons, were excluded from this analysis.

3.2. Survival and HCC Recurrence. Figure 3(a) shows the Kaplan-Meier plots for the cumulative survival of all patients ($n = 319$) (*blue line*), with hospital mortality excluded ($n = 251$) (*green line*) and with HCC recurrence related deaths only ($n = 199$) (*red line*).

The maximum cumulative rate for HCCR was 33% (83/251) and was reached at 10.4 years after LT. There were no time-dependent differences for appearance of *extra-*, *intra-*, or combined *extrahepatic/intrahepatic* HCCR (*data not shown*). HCCR as a time-dependant covariate was identified by Cox regression analysis as the single strongest hazard for survival ($p < 0.001$; $\exp(B) = 10.156$), with no differences between *extra-*, *intra-*, or combined *extrahepatic/intrahepatic* locations (Figure 3(b)). Cumulative survival at 5, 10, and 30 years after LT was 80%, 67%, and 45% in HCC recurrence-free patients compared to 28%, 15%, and 10% irrespective of *extra-*, *intra-*, or combined *extrahepatic/intrahepatic* locations (Figure 3(b)). Univariate Cox regression analysis of hazards for HCCR (Table 5) revealed a significantly higher risk for HCCR if transplanted *outside* hMILAN ($p < 0.001$, $\exp(B) = 3.645$) and a significantly higher risk for HCCR depending on UICC-7 staging ($p < 0.001$, Log Rank), vascular infiltration ($p < 0.001$, Log Rank), and tumor grading ($p < 0.001$, Log Rank). *Underlying diseases* had a significant impact neither on HCC recurrence ($p > 0.05$) (Table 5) and on HCC recurrence related deaths ($p > 0.05$) (Table 6) nor on hospital mortality ($p > 0.05$) and overall mortality ($p > 0.05$) (*data not shown*). Neoadjuvant therapy in general did not avoid HCC recurrence ($p > 0.05$) (Table 5) but proved to be significantly advantageous if the tumor had been turned into a complete necrosis (e.g., through PEI, TACE, or RF) or if the tumor had been resected prior to LT (Figures 8 and 9). Neoadjuvant therapy did improve survival significantly, if non-HCCR related deaths were excluded from the survival analysis ($p = 0.024$, $\exp(B) = 0.562$) (Table 6 and Figure 9(e)). Figures 5 and 6 show that different monomodal/multimodal neoadjuvant treatments had different advantages in relation to the tumor anatomy of the HCC to be treated. Lowest HCC recurrence rates were observed in the group of nondetectable HCCs, which was significantly lower at any time as compared to any other group. Uninodular tumors and unilateral/multinodular tumors had the same cumulative rate of HCC recurrence up to five years after transplantation. Only the follow-up of more than five years revealed further and significant increase of HCC recurrences in unilateral/multinodular tumors as compared to the uninodular group. The highest rate of HCC recurrences was observed in multinodular/bilateral group, which was also

TABLE 2: Descriptive statistics.

Underlying disease	Gender		Age at LT [year]			Tumor morphology				Tumor volume [cm ³]				AFP [ng/mL]				Graft type				CIT [min.]				LT #					
	f	m	Mean	Median	Max	Min	No tumor detectable	Uninodular	Multinodular, unilateral	Multinodular, bilateral	Mean	Median	Max	Min	Full size	Deceased	Partial	Living	Deceased	Split	Living	Mean	Median	Max	Min	1st	2nd	3rd	Total		
Hepatitis B with D	1	14	50,6	50,3	61,6	38,6	1	9	2	3	86	8	978	—	418	18,3	5571	1	13	—	2	—	—	531	507	880	263	14	1	—	15
Hepatitis B	7	78	50,7	53,8	69,7	21,6	5	32	23	25	236	42	4849	—	2405	29	176659	1	78	1	2	4	—	638	635	1577	207	78	7	—	85
Hepatitis C with B	2	10	51,2	57,1	65,2	8,1	1	7	3	1	30	13	202	—	3478	25,5	32000	5	12	—	—	—	—	607	518	1054	388	11	1	—	12
Hepatitis C	20	66	54,2	54,7	66,7	25	5	40	25	16	80	16	1164	—	839	21	56100	1	74	—	4	6	2	584	571	1302	100	77	8	1	86
Hepatoblastoma	3	1	14,8	14,1	17,8	13,3	—	1	—	3	432	375	905	74	304	304	600	7	4	—	—	—	—	866	724	1740	275	4	—	—	4
Adenomatosis	3	1	41,7	40,7	56,3	29,2	—	1	2	1	27	6	93	4	4,75	5	7	2	4	—	—	—	—	638	579	1122	271	3	1	—	4
Hypertrosinemia	—	2	14,4	14,4	19,4	9,3	—	2	—	—	34	34	34	34	1276	1276	2431	120	2	—	—	—	—	420	420	480	359	2	—	—	2
Wilson's disease	1	—	43,8	—	—	—	—	1	—	—	34	—	—	—	5	—	—	—	1	—	—	—	—	572	572	572	572	1	—	—	1
Hemochromatosis	—	4	56,8	56,7	63,5	50,3	—	—	2	2	452	19	1768	2	248	247	485	13	4	—	—	—	—	635	618	786	516	3	1	—	4
α 1 antitrypsin def.	1	—	56,8	—	—	—	—	1	—	—	17	—	—	—	1	—	—	—	1	—	—	—	—	588	588	588	588	1	—	—	1
Budd Chiari	1	1	36,2	36,2	40,3	32,2	—	1	1	—	263	263	525	2	39	39	73	5	2	—	—	—	—	665	665	773	557	1	1	—	2
Alcohol abuse	6	41	55,4	55,4	68,7	26	4	15	10	18	534	34	14137	—	3679	12,3	109718	1	45	—	1	1	—	674	629	1970	187	42	5	—	47
Androgen therapy	—	1	29,6	—	—	—	—	—	—	1	13	—	—	—	5	—	—	—	1	—	—	—	—	552	552	552	552	1	—	—	1
Biliary cirrhosis	3	—	24,9	17,7	54,1	3	—	2	—	1	131	9	382	3	39	39,3	39,3	39	1	—	—	—	—	644	773	827	332	3	—	—	3
Cryptogenic cirrhosis	23	27	49	51,8	67	18,6	4	21	9	16	856	93	8181	—	6100	10,5	214975	1	44	1	1	4	—	628	636	1180	227	46	4	—	50
Autoimmune hepatitis	—	1	72	—	—	—	—	—	1	—	38	—	—	—	485	—	—	—	1	—	—	—	—	971	971	971	971	1	—	—	1
Chronic lead intoxic.	—	1	44,7	—	—	—	—	—	1	—	1216	—	—	—	540	—	—	—	—	—	—	—	—	865	865	865	865	1	—	—	1

TABLE 3: Rate and anatomical sites of HCC recurrences with respect to tumor morphology and neoadjuvant therapy.

Counts/%	<i>n</i>	HCC													
		Not detectable		Uninodular		Multinodular, unilateral		Multinodular, bilateral							
		Neoadjuvant therapy		Neoadjuvant therapy		Neoadjuvant therapy		Neoadjuvant therapy							
	<i>n</i>	%	<i>n</i>	%	<i>n</i>	%	<i>n</i>	%	<i>n</i>	%					
HCC recurrence															
No	230	19	95	53	83	55	80	25	68	32	76	22	49	24	57
Yes	89	1	5	11	17	14	20	12	32	10	24	23	51	18	43
Abdominal wall	2					2									
Adrenal	1											1			
Bone	5					2						2		1	
Bone + abdominal wall	2			1				1							
Bone + liver	1													1	
Brain	2	1		1											
Esophagus	1			1											
Liver	17			2		2		5		2		4		2	
Liver + abdominal wall	2											1		1	
Liver + adrenal	2											1		1	
Liver + diaphragm	1											1			
Liver + lung	5					1						2		2	
Liver + lung + bone	1													1	
Liver + lung + kidney	1					1									
Liver + lymph node	3					1		1						1	
Liver + peritoneum	1											1			
Lung	20			2				2		4		7		5	
Lung + bone	4					3						1			
Lung + bone + brain	1											1			
Lung + brain	4							2						2	
Lung + liver + lymph node + abdominal wall	1									1					
Lymph node	6			1				1		2		1		1	
Peritoneum	5			3		2									
Peritoneum + bone	1									1					

significantly higher as compared to the group of multinodular/unilateral HCC. Multinodular unilateral tumors benefited more from PEI whereas multinodular bilateral tumors more likely benefited from TACE. This correlation was found for HCC recurrences as well as for HCC recurrence related deaths (Figures 6(c), 6(d), 7(c), and 7(d)).

Survival was also significantly related to the UICC-7 staging (Table 6 and Figure 9(b)), meaning that survival decreased with each step-up in UICC-7 staging—with the exception of UICC I and II staged tumors—which had a comparable survival to the reference category of “no or necrotic tumors” ($p = 0.688$, $\exp(B) = 0.746$; $p = 0.402$, $\exp(B) = 1.738$, resp.). If patients were transplanted outside the *histologic MILAN* criteria, then the HCC recurrence rate was significantly higher ($p < 0.001$, $\exp(B) = 3.507$) (Table 5 and Figure 8(c)) and survival significantly deteriorated

($p < 0.001$, $\exp(B) = 4.701$) (Table 6 and Figure 9(c)). Vice versa, if transplanted inside *hMILAN* the cumulative survival rate was 72% at 14 years ($p < 0.001$, Log Rank) (Figure 9(c)). Small (V1) and large (V2) *vascular infiltrations* were significant hazards for HCC recurrence ($p < 0.001$, $\exp(B) = 9.050$; $p < 0.001$, $\exp(B) = 14.848$; resp.) (Table 5 and Figure 8(d)) and HCC recurrence related risks for survival ($p = 0.001$, $\exp(B) = 9.578$; $p < 0.001$, $\exp(B) = 14.066$; resp.) (Table 6 and Figure 9(d)).

HCCR and survival were both significantly influenced by tumor *grading* ($p < 0.001$, Log Rank). The risk for HCCR increased (G2: $p = 0.018$, $\exp(B) = 4.1$; G3-4; $p < 0.001$, $\exp(B) = 8.668$) (Table 5 and Figure 8(f)) and survival decreased significantly with each step of tumor dedifferentiation (G3-4: $p = 0.001$, $\exp(B) = 10.498$) (Table 6 and Figure 9(f)). Furthermore, we found a significant increase in numbers of

TABLE 4: Tumor morphology, neoadjuvant therapy, tumor response to neoadjuvant therapy, HCC recurrence rate, and HCC recurrence related deaths.

Tumor morphology	Neoadjuvant therapy	Vital tumor remnants		Response		No tumor detectable		HCC recurrence		HCC recurrence related death	
		Full-necrotic	No tumor detectable	Full-necrotic	No tumor detectable	No	Yes	No	Yes	Not specified	
No tumor	PEI	—	2 100%	—	2 100%	—	2 100%	—	2 100%	—	—
	TACE	—	2 100%	—	2 100%	—	2 100%	—	2 100%	—	—
	Surgery	—	9 100%	—	8 89%	1 11%	8 89%	1 11%	8 89%	1 11%	—
	Surgery + TACE	—	2 100%	—	2 100%	—	2 100%	—	2 100%	—	—
	Surgery + TACE + CTX	—	1 100%	—	1 100%	—	1 100%	—	1 100%	—	—
	Overall	0	16	0	15	1	15	1	15	1	0
	Uninodular	None	48 100%	—	—	37 77%	11 23%	39 81%	8 17%	39 81%	1 2%
		PEI	22 73%	—	8 27%	25 83%	5 17%	25 83%	4 13%	25 83%	1 3%
		TACE	13 81%	—	3 19%	12 75%	4 25%	13 81%	3 19%	13 81%	—
		PEI + TACE	6 75%	—	2 25%	7 88%	1 13%	8 100%	—	8 100%	—
Surgery		3 75%	—	1 25%	—	4 100%	2 50%	2 50%	2 50%	—	
CTX + TACE		2 67%	—	1 33%	—	3 100%	3 100%	—	3 100%	—	
RFA		2 100%	—	—	2 100%	—	2 100%	—	2 100%	—	
RFA + TACE		—	—	1 100%	—	1 100%	—	—	1 100%	—	
PEI + RFA		—	—	1 100%	—	1 100%	—	—	1 100%	—	
Overall		96	17	0	88	25	94	17	85	2	
Multinodular, unilateral	None	25 100%	—	—	14 56%	11 44%	17 68%	8 32%	17 68%	—	
	PEI	5 83%	—	1 17%	6 100%	—	6 100%	—	6 100%	—	
	TACE	6 86%	—	1 14%	4 57%	3 43%	5 71%	2 29%	5 71%	—	
	PEI + TACE	4 100%	—	—	4 100%	—	4 100%	—	4 100%	—	
	Surgery	3 100%	—	—	1 33%	2 67%	2 67%	1 33%	2 67%	—	
	CTX	4 100%	—	—	2 50%	2 50%	4 100%	—	4 100%	—	
	Surgery + TACE	3 100%	—	—	1 33%	2 67%	1 33%	2 67%	1 33%	—	
	RFA	3 100%	—	—	2 67%	1 33%	2 67%	1 33%	2 67%	—	
	Surgery + TACE + CTX	1 100%	—	—	1 100%	—	1 100%	—	1 100%	—	
	RFA + TACE	1 100%	—	—	1 100%	—	1 100%	—	1 100%	—	
Overall	55	2	0	36	21	43	14	38	0		
Multinodular, bilateral	None	34 100%	—	—	12 35%	22 65%	15 44%	19 56%	15 44%	—	
	PEI	4 100%	—	—	4 100%	—	4 100%	—	4 100%	—	
	TACE	7 100%	—	—	2 29%	5 71%	2 29%	5 71%	2 29%	—	
	PEI + TACE	6 75%	—	2 25%	5 63%	3 38%	6 75%	2 25%	6 75%	—	
	Surgery	2 100%	—	—	—	2 100%	—	2 100%	—	—	
	CTX	2 100%	—	—	—	2 100%	—	2 100%	—	—	
	Surgery + TACE	2 100%	—	—	—	2 100%	—	2 100%	—	—	
	Surgery + TACE + CTX	3 100%	—	—	1 50%	1 50%	1 50%	1 50%	1 50%	—	
	Surgery + CTX	1 100%	—	—	—	1 100%	—	3 100%	—	—	
	PEI + RFA	1 100%	—	—	—	1 100%	—	—	1 100%	—	
Surgery + PEI	1 100%	—	—	—	1 100%	—	—	1 100%	—		
Overall	63	2	0	27	38	34	31	31	0		
Total	214	21	16	166	85	186	63	63	2		

TABLE 5: Identification of hazards for HCC recurrence by univariate Cox regression, $n = 251$ (hospital deaths excluded).

Univariate Cox regressions for HCC recurrence		n	p	exp(B)/hazard	95.0% CI	
					Lower	Upper
Underlying disease	<i>Hepatitis B with D</i>	12	0.176	<i>Reference category</i>		
	Hepatitis B	64	0.405	1.667	0.5	5.555
	Hepatitis C	75	0.847	1.126	0.336	3.777
	Hepatitis C with B	9	0.419	0.394	0.041	3.784
	Alcohol	33	0.131	2.603	0.752	9.003
	Cryptogenic cirrhosis	38	0.375	1.76	0.505	6.128
	Other	20	0.417	1.732	0.459	6.53
Tumor vitality	<i>Vital tumor</i>	214	0.048	<i>Reference category</i>		
	Full-necrotic tumor	21	0.118	0.399	0.126	1.263
	No tumor detectable	16	0.053	0.142	0.02	1.022
Tumor morphology	<i>No tumor detectable</i>	16	<0.001	<i>Reference category</i>		
	Uninodular	113	0.192	3.789	0.513	27.971
	Multinodular unilateral	57	0.073	6.251	0.840	46.513
	Multinodular bilateral	65	0.008	14.505	1.990	105.733
UICC-7	<i>No or necrotic tumor</i>	37	<0.001	<i>Reference category</i>		
	UICC I	69	0.646	0.75	0.219	2.563
	UICC II	71	0.200	2.041	0.686	6.073
	UICC IIIA	25	<0.001	7.428	2.513	21.959
	UICC IIIB	32	<0.001	13.734	4.759	39.631
	UICC IIIC	7	0.001	9.808	2.627	36.611
	UICC IVA	7	<0.001	54.098	14.542	201.253
hMILAN	<i>Inside</i>	148		<i>Reference category</i>		
	Outside	103	<0.001	3.507	2.237	5.496
Vascular infiltration	<i>No or necrotic tumor</i>	37	<0.001	<i>Reference category</i>		
	V0	148	0.254	1.829	0.648	5.161
	V1	28	<0.001	9.05	3.042	26.92
	V2	37	<0.001	14.848	5.206	42.353
	Missing data	1	0.977	0	0	1.65E + 245
Neoadj. therapy	No	107		<i>Reference category</i>		
	Yes	144	0.071	0.676	0.441	1.035
Grading	<i>No or necrotic tumor</i>	37	<0.001	<i>Reference category</i>		
	G1	35	0.272	1.937	0.596	6.299
	G2	130	0.023	3.282	1.179	9.138
	G3-4	43	<0.001	6.672	2.313	19.249
	Missing data	6	0.008	6.550	1.636	26.214

HCC = hepatocellular carcinoma.

UICC-7 = 7th edition TNM classification of Unité International Centre Cancer.

hMILAN = histologic MILAN classification.

Vascular infiltration: V0 = none, V1 = small vessels, and V2 = large vessels.

Tumor grading: G1 = low, G2 = intermediate, and G3-4 = high to anaplastic.

vascular infiltrating tumors and an increase of large vessel infiltrations per step of tumor dedifferentiation (G1 \rightarrow G2 \rightarrow G3-4) ($\chi^2 p = 0.006$) (Figure 10).

Because long-term survival was mainly limited by HCCR ($p < 0.001$, exp(B) = 10.156; time-dependent Cox regression) and HCCRs were diagnosed as late as 10 years after LT, but not later than 10.4 years after LT, we aimed to determine the cohort identifiers with respect to this 10.4-year cut-off.

Therefore we analysed the database and compared the group of patients with HCCR occurrence (below 10.4 years) with the group of patients who had HCCR-free follow-up of more than 10.4 years after LT (hospital deaths censored). We found that *hMILAN*, *UICC-7*, *vascular infiltration*, and *tumor grading* were highly significant prognostic parameters ($\chi^2 p < 0.001$, Table 7), while *neoadjuvant therapy* and *underlying diseases* remained nonsignificant.

TABLE 6: Identification of hazards for HCC recurrence related deaths by univariate Cox regression, $n = 199$ (non-HCC recurrence related deaths excluded).

Univariate Cox regressions for HCC recurrence related deaths	n	p	exp(B)/hazard	95.0% CI	
				Lower	Upper
Underlying disease	Hepatitis B with D	11	0.348	<i>Reference category</i>	
	Hepatitis B	50	0.368	1.964	0.451 8.553
	Hepatitis C	55	0.542	1.584	0.361 6.939
	Hepatitis C with B	6	0.908	0.868	0.079 9.588
	Alcohol	30	0.162	2.919	0.65 13.109
	Cryptogenic cirrhosis	30	0.13	3.151	0.714 13.896
	Other	17	0.433	1.93	0.373 9.979
Tumor vitality	Vital tumor	168	0.083	<i>Reference category</i>	
	Full-necrotic tumor	17	0.147	0.352	0.086 1.442
	No tumor detectable	14	0.084	0.175	0.024 1.264
Tumor morphology	<i>No tumor detectable</i>	14	<0.001	<i>Reference category</i>	
	Uninodular	89	0.323	2.765	0.368 20.791
	Multinodular unilateral	41	0.104	5.354	0.707 40.567
	Multinodular bilateral	55	0.019	10.898	1.488 79.801
UICC-7	<i>No or necrotic tumor</i>	31	<0.001	<i>Reference category</i>	
	UICC I	54	0.688	0.746	0.178 3.124
	UICC II	51	0.402	1.738	0.477 6.327
	UICC IIIA	21	0.003	6.771	1.944 23.584
	UICC IIIB	26	<0.001	12.792	3.791 43.16
	UICC IIIC	6	0.006	8.066	1.800 36.142
	UICC IVA	7	<0.001	226.972	46.041 1118.915
hMILAN	Inside	112		<i>Reference category</i>	
	Outside	87	<0.001	4.701	2.700 8.185
	<i>No or necrotic tumor</i>	31	<0.001	<i>Reference category</i>	
Vascular infiltration	V0	117	0.371	1.733	0.52 5.779
	V1	21	<0.001	9.578	2.769 33.128
	V2	30	<0.001	14.066	4.221 46.866
Neoadj. therapy	No	82		<i>Reference category</i>	
	Yes	117	0.010	0.525	0.321 0.859
Grading	<i>No or necrotic tumor</i>	31	<0.001	<i>Reference category</i>	
	G1	26	0.26	2.179	0.562 8.442
	G2	103	0.061	3.098	0.948 10.124
	G3-4	36	0.001	7.909	2.357 26.542
	Missing data	3	0.007	11.921	1.980 71.774

HCC = hepatocellular carcinoma.

UICC-7 = 7th edition TNM classification of Unité International Centre Cancer.

hMILAN = histologic MILAN classification.

Vascular infiltration: V0 = none, V1 = small vessels, and V2 = large vessels.

Tumor grading: G1 = low, G2 = intermediate, and G3-4 = high to anaplastic.

4. Discussion

The results of this study containing the complete data of our center since 1975 demonstrate that hepatocellular carcinoma can be cured by LT—even in advanced tumor stages. As expected, long-term survival was mainly limited by HCC recurrence (HCCR) ($p < 0.001$, $\exp(B) = 10.156$; time-dependent Cox regression) and any covariate with high potency for HCC recurrence therefore was a significant

negative predictor of survival as well. Vice versa, covariates that were not associated with a significantly higher rate of HCC recurrences (e.g., *underlying diseases*) had no significant impact on tumor-free survival. We were surprised though to find that not only intrahepatic HCCRs (some of which might have been de novo HCCs) but extrahepatic HCCR also can occur more than 10 years after LT—without synchronous intrahepatic HCC recurrences. We believe that these tumors must have been dormant metastatic HCC manifestations,

TABLE 7: Distribution of covariates and subcategories in HCCR versus HCCR-free postoperative episodes (cut-off time 10.4 years) ($n = 115$) (hospital deaths and patients without HCCR within 10.4 years excluded).

Main category	Overall ($n = 115$) (%)	Subcategory	Follow-up		χ^2 <i>p</i> value
			<10.4 years ($n = 82$)	>10.4 years ($n = 33$)	
Underlying disease	7 (6.1%)	Hepatitis B with D	3 (3.7%)	4 (12.1%)	0.076
	35 (30.4%)	Hepatitis B	23 (28.0%)	12 (36.4%)	
	30 (26.1%)	Hepatitis C	20 (24.4%)	10 (30.3%)	
	3 (2.6%)	Hepatitis C with B	1 (1.2%)	2 (6.1%)	
	15 (13.0%)	Alcohol	14 (17.1%)	1 (3.0%)	
	16 (13.9%)	Cryptogenic	13 (15.9%)	3 (9.1%)	
	9 (7.8%)	Other	8 (9.8%)	1 (3.0%)	
UICC-7	9 (7.8%)	No or necrotic tumor	3 (3.7%)	6 (18.2%)	0.000
	19 (16.5%)	I	7 (8.5%)	12 (36.4%)	
	27 (23.5%)	II	16 (19.5%)	11 (33.3%)	
	18 (15.7%)	IIIA	18 (22.0%)	0	
	27 (23.5%)	IIIB	25 (30.5%)	2 (6.1%)	
	7 (6.1%)	IIIC	5 (6.1%)	2 (6.1%)	
	5 (4.3%)	IVA	5 (6.1%)	0	
3 (2.6%)	IVB	3 (3.7%)	0		
hMILAN	50 (43.5%)	Inside	27 (32.9%)	23 (69.7%)	0.000
	65 (56.5%)	Outside	55 (67.1%)	10 (30.3%)	
Before treatment	64 (55.7%)	No	43 (52.4%)	21 (63.6%)	0.274
	51 (44.3%)	Yes	39 (47.6%)	12 (36.4%)	
Vascular infiltration	9 (7.8%)	No or necrotic tumor	3 (3.7%)	6 (18.2%)	0.000
	55 (47.8%)	0	32 (39.0%)	23 (69.7%)	
	19 (16.5%)	1	17 (20.7%)	2 (6.1%)	
	32 (27.8%)	2	30 (36.6%)	2 (6.1%)	
Grading (G)	9 (8.3%)	No or necrotic tumor	3 (2.8%)	6 (5.5%)	0.000
	20 (18.3%)	1	9 (8.3%)	11 (10.1%)	
	52 (47.7%)	2	42 (38.5%)	10 (9.2%)	
	28 (25.7%)	3-4	24 (22.0%)	4 (3.7%)	

HCC = hepatocellular carcinoma.

UICC-7 = 7th edition TNM classification of Unité Internationale Contre Cancer.

hMILAN = histologic MILAN classification.

Vascular infiltration: V0 = none, V1 = small vessels, and V2 = large vessels.

Tumor grading: G1 = low, G2 = intermediate, and G3-4 = high to anaplastic.

which existed probably at the time of LT. Thus, it seems that persistent HCC metastasis can reside in extrahepatic locations without being diagnosed or being clinically relevant for many years despite a constant immunosuppressive therapy after transplantation. HCC recurrence-free survival beyond the observed cut-off of 10.4 years' follow-up is a very good prognostic sign independent of the initial tumor staging (e.g., hMILAN and UICC-7 staging) (Table 7). Few patients even were cured from HCCR with observed long-term survival; for example, one patient did survive more than 30 years after repeated resection of lung metastases at one and two years after LT and finally died by natural cause. These findings are only obtainable by long-term observational studies covering at least two decades of follow-up after LT. The fact that even patients with advanced HCCs and tumor stages beyond today's listing criteria did survive for astonishingly long periods of time (as shown by this series of patients)

demonstrates the outstanding role of LT in the treatment of HCC.

It is clear that the *histologic MILAN* has no *pretransplant* predictive value, because it is a histological *posttransplantation* parameter of the recipient's liver. In this context it is interesting to realize that there was significant proportion of patients who did survive up to 25 years after LT, despite the fact that their tumors had been falsely categorized inside the *iMILAN* classification.

When putting those information together with the knowledge that sensitivity and accuracy of modern imaging techniques have increased over the decades, then one might conclude that the commonly used *iMILAN* criteria need a revision based on contemporary data. Such an update of *iMILAN* criteria should take into account that there is—and probably always will be—an existing variance between preoperative *iMILAN* and postoperative *hMILAN*.

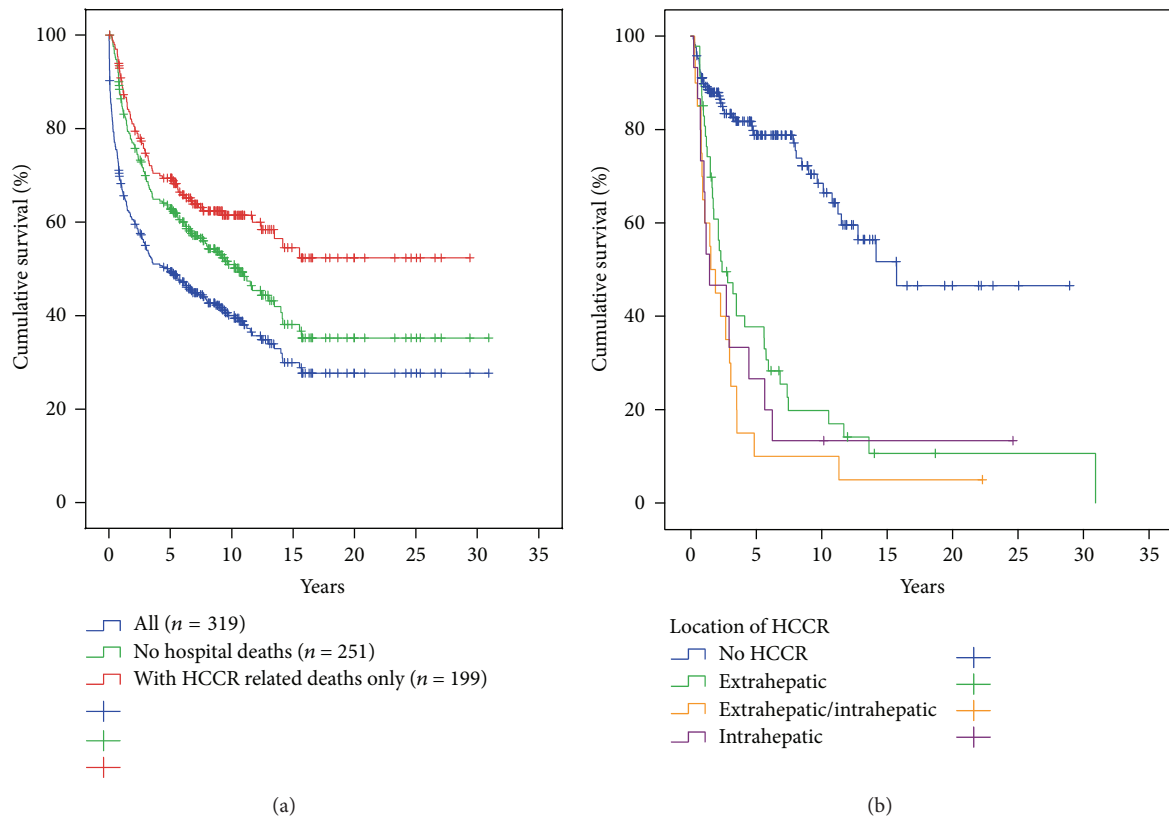


FIGURE 3: Survival with respect to hospital mortality and HCC recurrence. (a) Cumulative survival of all patients ($n = 319$, blue line), without hospital mortality ($n = 251$, green line) and with HCC recurrence related deaths only ($n = 199$, red line). (b) HCC recurrence-free survival (blue line, Cox regression analysis with HCC recurrence as time-dependent covariate) and with respect to extrahepatic (green line), intrahepatic (red line), or combined extrahepatic/intrahepatic HCC recurrences (orange line). HCC recurrence was highly significant hazard of survival ($p < 0.001$, $\exp(B) = 10.156$), but it made no difference to survival whether HCC recurrences were at intrahepatic, at extrahepatic, or at combined intrahepatic/extrahepatic locations ($\sigma^2 p > 0.05$).

Furthermore, for a more accurate assessment of the long-term prognosis, it could be beneficial not only to classify the tumors according to size and numbers of tumors but to consider also the bilateral distribution of tumors on both liver lobes as a prognostic relevant cofactor (Figure 5, Tables 5 and 6).

Hence it is no surprise that several authors already have cast serious doubt [44, 45] on the concept of relying solely on the commonly used iMILAN status for the listing of patients and suggested the extension of the iMILAN criteria, which has already resulted in the definition of alternative listing criteria (e.g., the University of California San Francisco (UCSF) criteria) [46]. But these alternative allocation algorithms also rely solely on pretransplant imaging technology and lack long-term follow-up data that covers at least two decades after LT.

Neoadjuvant therapy in general was only slightly advantageous with respect to HCC recurrence but nevertheless did prolong survival significantly. Because the effect of different neoadjuvant treatment strategies in different patients by different specialists against different tumors of different numbers, sizes, gradings, and status of vascular infiltration is variant, the extent of induced tumor necrosis

is completely variant as well. The bottom line is that lowest HCCR rates and best survival rates had been observed when all tumor mass was completely necrotic or missing (e.g., after resection) (Figures 5, 8(b), 8(d), 8(f), 9(b), 9(d), and 9(f)). In other words, the possibly advantageous effect of a neoadjuvant therapy depends on whether all tumor mass is transferred into a complete necrosis or not.

The data further demonstrate that tumor grading (G) is currently an underrated pretransplant prognostic parameter, which seems to be equally relevant for long-term prognosis after LT as compared to allocation algorithms such as iMILAN, which are susceptible for the underrating of relevant histological tumor parameters—for example, the status of vascular infiltration.

Our data also demonstrates the existing close correlation of tumor dedifferentiation with intrahepatic tumor spreading (Figure 10(a)) and the potency of tumor cell differentiation (grading, G) to predict vascular infiltration (Figure 10(b)). As tumor grading and vascular infiltration have a significant prognostic impact on HCC recurrence and patient survival, these cofactors should be routinely utilized for a better timing of LT in HCC patients.

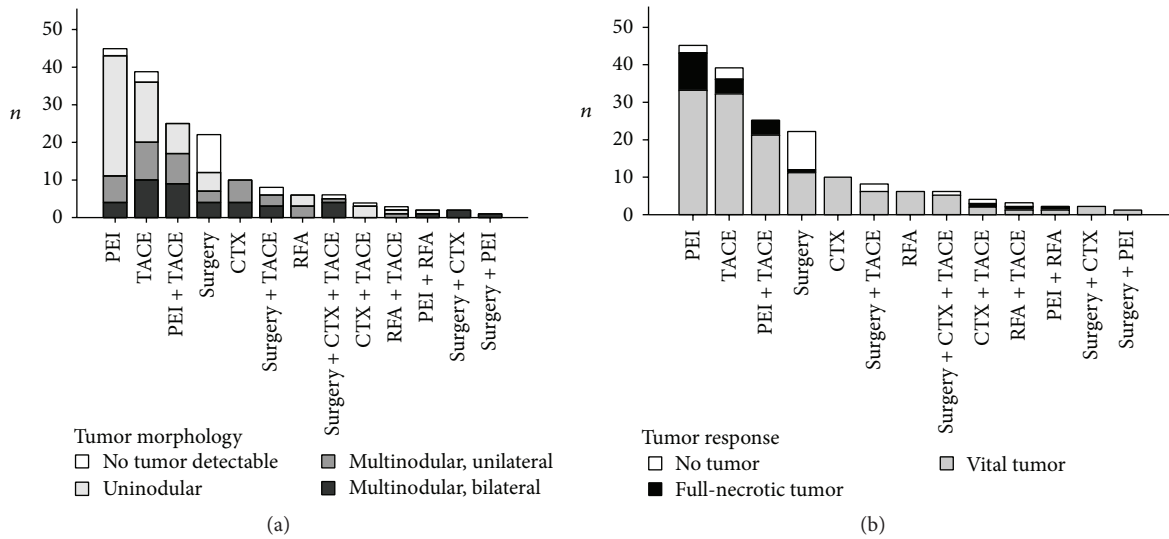


FIGURE 4: HCC morphology per treatment group (a) and tumor response to pretreatments (b) as measured in numbers of nondetectable, full-necrotic, or vital tumors. Percutaneous ethanol instillation (PEI) ($n = 45$), transarterial chemoembolisation (TACE) ($n = 39$), and surgery ($n = 22$) were most frequently applied. Another major treatment group were patients that had been treated by a combination of PEI and TACE ($n = 25$). There were a significant higher number of uninodular tumors in the PEI group (71%) as compared to the TACE group (41%). The TACE group also had a significant higher proportion of multinodular tumors (52%) as compared to the PEI group (25%) and a higher proportion of multinodular/bilateral tumors, which was three times as high as compared to the PEI groups (26% to 9%, resp.). The pretreatment group surgery had the highest rate (45%) (10 of 22) of explanted livers without detectable tumor remnants, but this difference was statistically not significant as compared to the proportion of full-necrotic and nondetectable tumors ($n = 10+2$) in the PEI group (Fisher's exact test $p = 0.099$). The PEI group and TACE group were comparable in terms of remaining vital tumor tissue (Fisher's exact test $p = 0.439$).

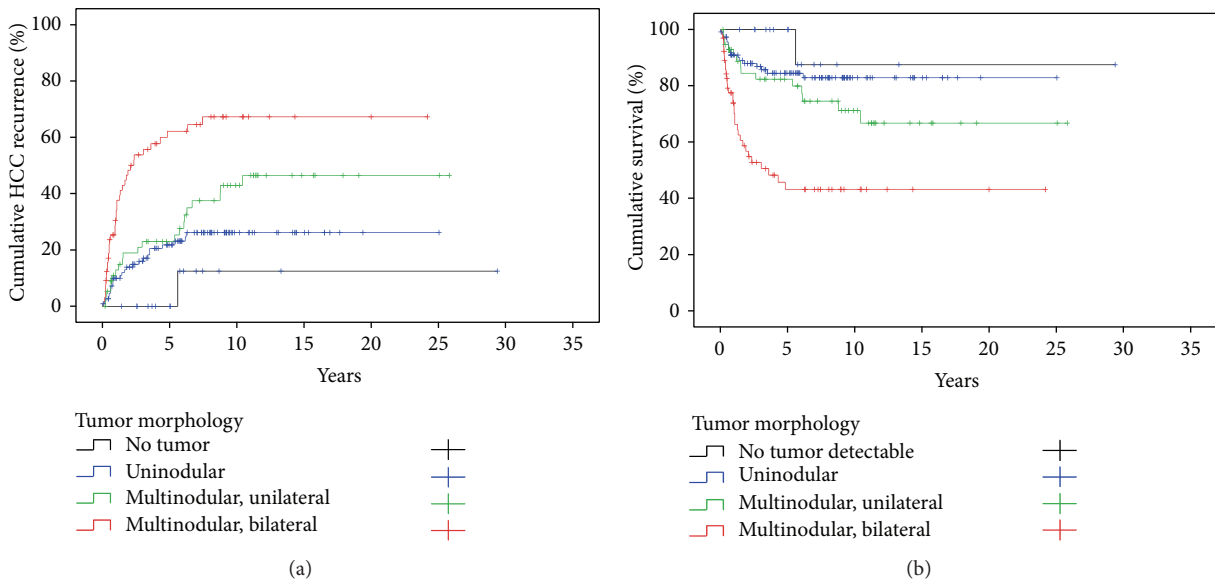


FIGURE 5: HCC recurrence (a) and survival (b) with respect to tumor morphology. HCC recurrence (hospital deaths excluded) (a) was significantly influenced by tumor morphology (Log Rank $p < 0.001$). Survival (hospital deaths and non-HCC recurrence related deaths excluded) (b) was significantly influenced by the intrahepatic tumor dissemination of the primary HCC (Log Rank $p < 0.001$).

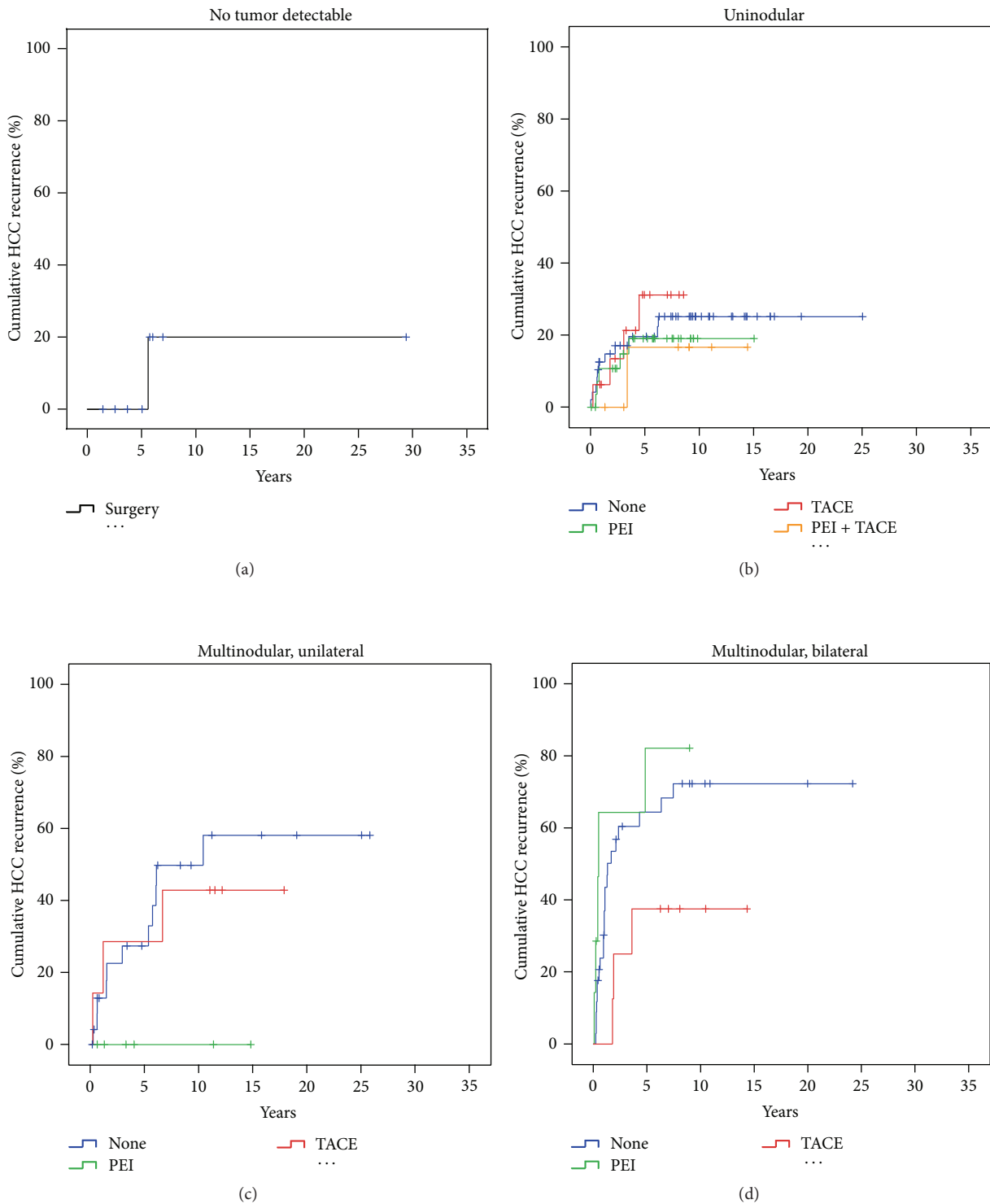


FIGURE 6: HCC recurrence with respect to tumor morphology and neoadjuvant therapy. The effectiveness as estimated by rate of HCC recurrences was analysed with respect to different neoadjuvant therapy regimen and tumor morphology. Hospital deaths and treatment groups with $n < 5$ were excluded from analysis. Thus, only *surgery* remained for estimation of cumulative HCC recurrence in the group of *nondetectable tumors* (a). In the group of *uninodular* HCC (b) there was no significant difference in HCC recurrence rates comparing the mono- and multimodular pretreatments. *Multinodular/unilateral* HCC (c) had a significantly lower rate of HCC recurrence (Log Rank $p < 0.001$) if treated by *PEI*, while *TACE* did not make a difference for this group of tumors at all (Log Rank $p > 0.05$). In *multinodular/bilateral* tumors (d) *TACE* was significantly better as compared to *PEI* (Log Rank $p < 0.05$). The *PEI* group had the same cumulative rate of HCC recurrence as the no-treatment group.

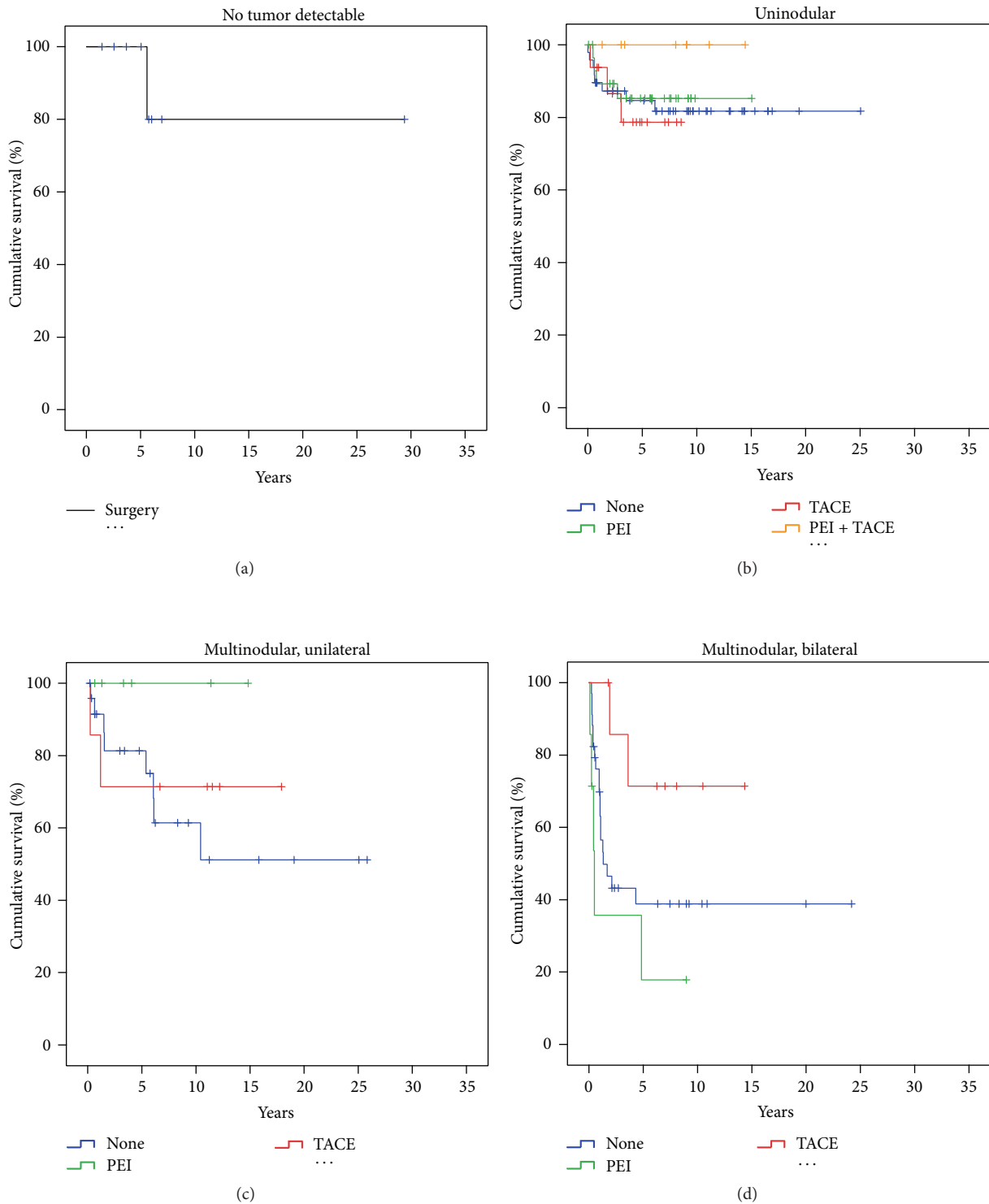


FIGURE 7: Survival with respect to tumor morphology and neoadjuvant therapy. Hospital mortality and non-HCC recurrence related deaths as well as treatment groups with $n < 5$ were excluded. In the category of *nondetectable tumors* only *surgery* remained with $n > 5$. The cumulative survival in this subcategory was 80% (a). In the category of *uninodular HCC* (b) there was no difference in survival comparing patients that had been pretreated by *PEI* or *TACE*. For the combination of *PEI* and *TACE* a significantly better survival was observed (Log Rank $p < 0.05$) as compared to *PEI* or *TACE* alone. For *multinodular/unilateral HCC* (c) *TACE* did not make a difference, while pretreatment with *PEI* achieved a significant better survival (Log Rank $p < 0.05$). In *multinodular/bilateral tumors* (d) survival was significantly better for the group of patients who were pretreated with *TACE* as compared to *PEI* or no pretreatment.

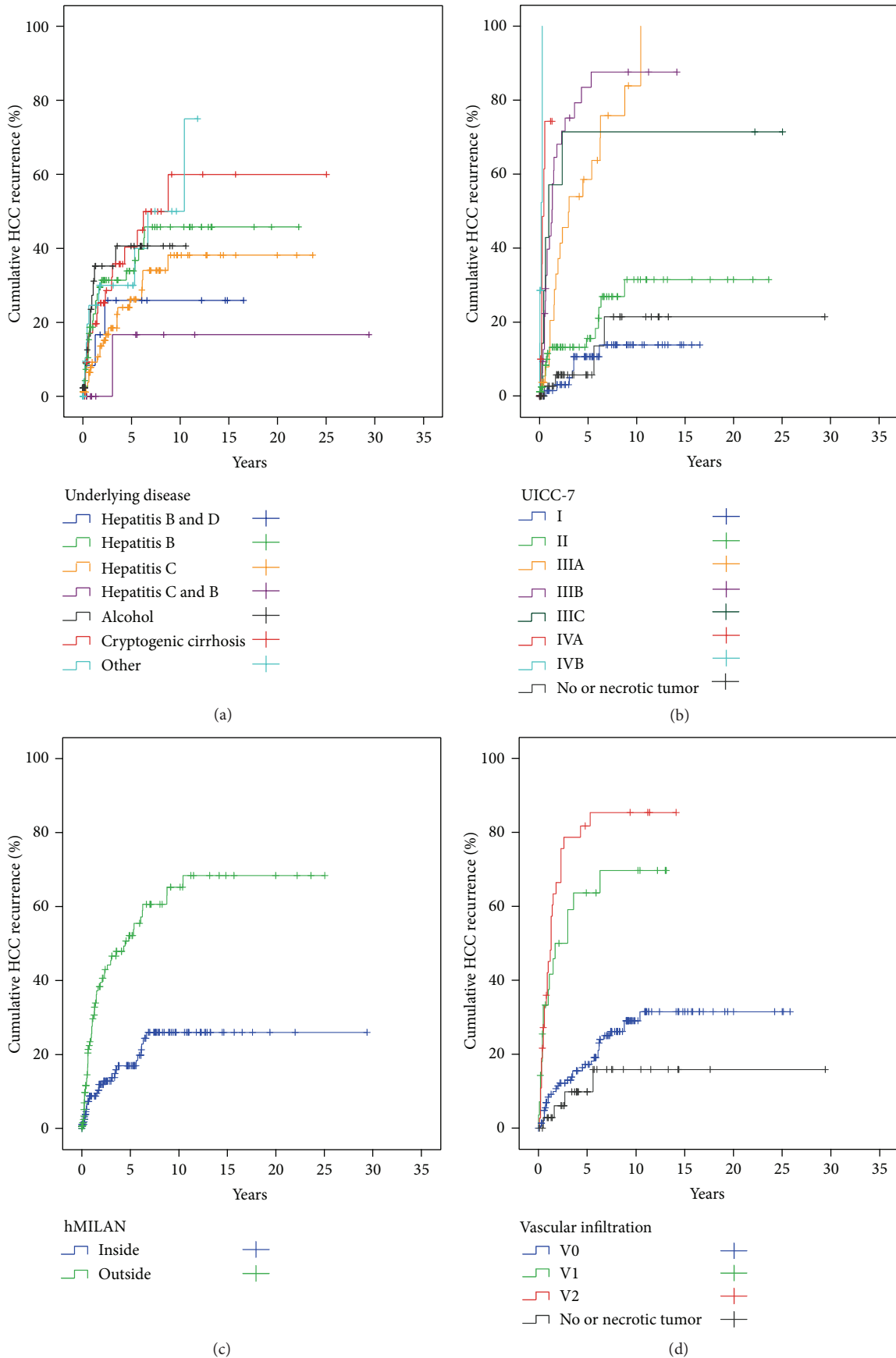


FIGURE 8: Continued.

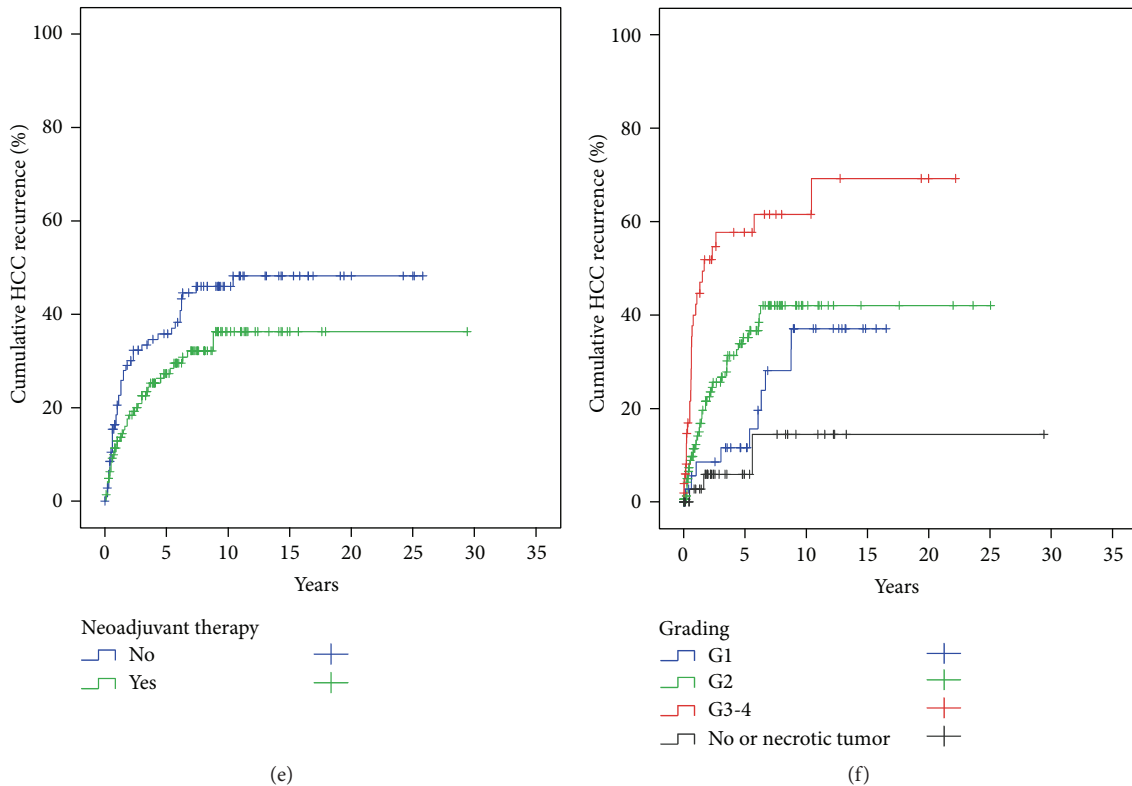


FIGURE 8: Cumulative recurrence of HCC (hospital mortality excluded) ($n = 251$) (for statistics see Table 3). (a) *Underlying disease* had no significant impact on HCC recurrence. (b) *UICC-7* staging had a significant impact on HCCR. Only UICC I and II staged tumors were comparable to the reference category of *no or necrotic* tumors, while tumors of UICC-7 IIIA-IVB had significantly higher rates of HCCR. (c) The group of patients transplanted outside the histologic MILAN (*hMILAN*) had a maximum cumulative HCC recurrence rate of almost 70% at 10.4 years after LT, while patients transplanted inside *hMILAN* (*reference category*) only had a maximum cumulative HCC recurrence rate of about 25% at 7 years after LT. (d) *Vascular infiltration* was a highly significant predictor of HCC recurrence, while tumors without vascular infiltration had a comparable HCC recurrence rate compared to the reference group of *no or necrotic* tumors. (e) *Neoadjuvant therapy* had no significant impact on HCC recurrence. (f) *Tumor grading* was a significant hazard for HCC recurrence. G1 staged tumors had a comparable risk for HCC recurrence to the reference category (*no or necrotic tumors*), while G2 and G3-4 staged tumors were strong significant hazards for HCC recurrence.

5. Conclusion

Our retrospective data analysis demonstrates the historical evolution in liver transplantation from the 1970s until today. We clearly show that the diagnosis of hepatocellular carcinoma can be survived for the long-term after liver transplantation (LT). *Vascular infiltration* is one decisive predictor of HCCR and a major hazard for survival but is not easily and reliably detectable before LT. Furthermore, the data shows that *grading* is closely related to *vascular infiltration* and a *multinodular* and *bilateral tumor spreading*. Grading can be easily and reliably determined prior to LT by biopsy. We believe that this observation should be taken into account in liver allocation and the timing of LT. Biopsies could be well acquired synchronously during RFA or PEI bridging interventions. Furthermore, due to the fact that needle tract seeding has a very low incidence of only 0.13% [47] and in face of the potential benefits we believe that repeated fine needle biopsies [48, 49] of HCC tumors should be considered while the patient is listed for LT. One thinkable scenario though

might be that a detected dedifferentiation would trigger a drop-out from the waiting list due to expected poor prognosis and the implied ethical and judicial dilemma for patients who may remove themselves from the liver transplant waiting list by agreeing to the consequences of liver biopsy cannot be easily resolved. Vice versa, a consequence of more positive thinking could be a faster donor liver allocation process in case of detected progressive cellular dedifferentiation, hoping to perform LT before vascular infiltration and metastatic seeding of HCC have taken place. Of course, a single biopsy provides no complete picture of the entire tumor, especially not if the tumor has a multinodular morphology with different tumor gradings in each tumor nodule. However, our data show that every single detected dedifferentiation represents a significant risk increment for HCC recurrence and therefore should be considered accordingly, not only during the initial listing of patients, but also in patients who are already listed and waiting for a donor organ.

Overall, we believe that an updated and refined liver allocation score for HCC patients could be developed to gain

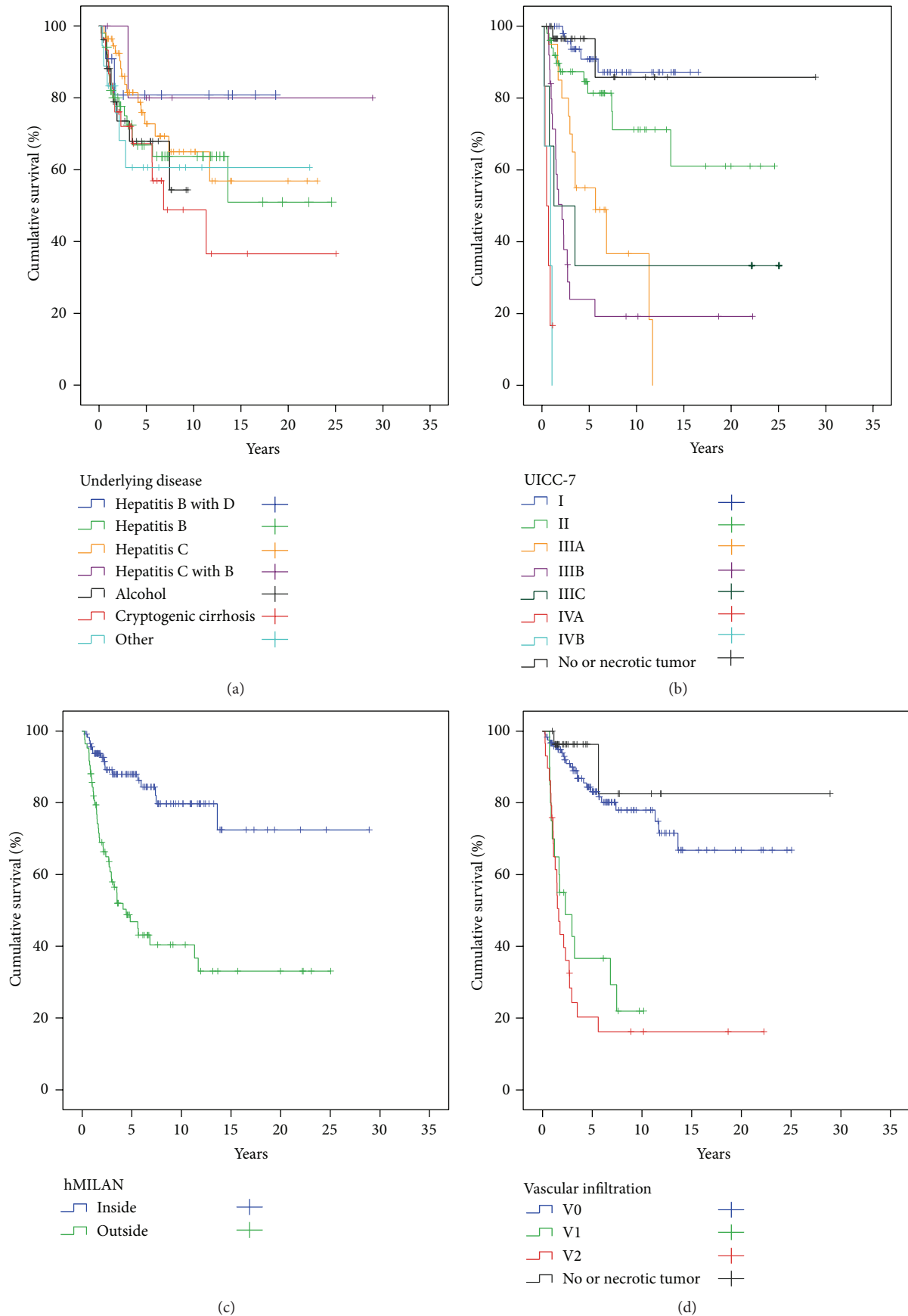


FIGURE 9: Continued.

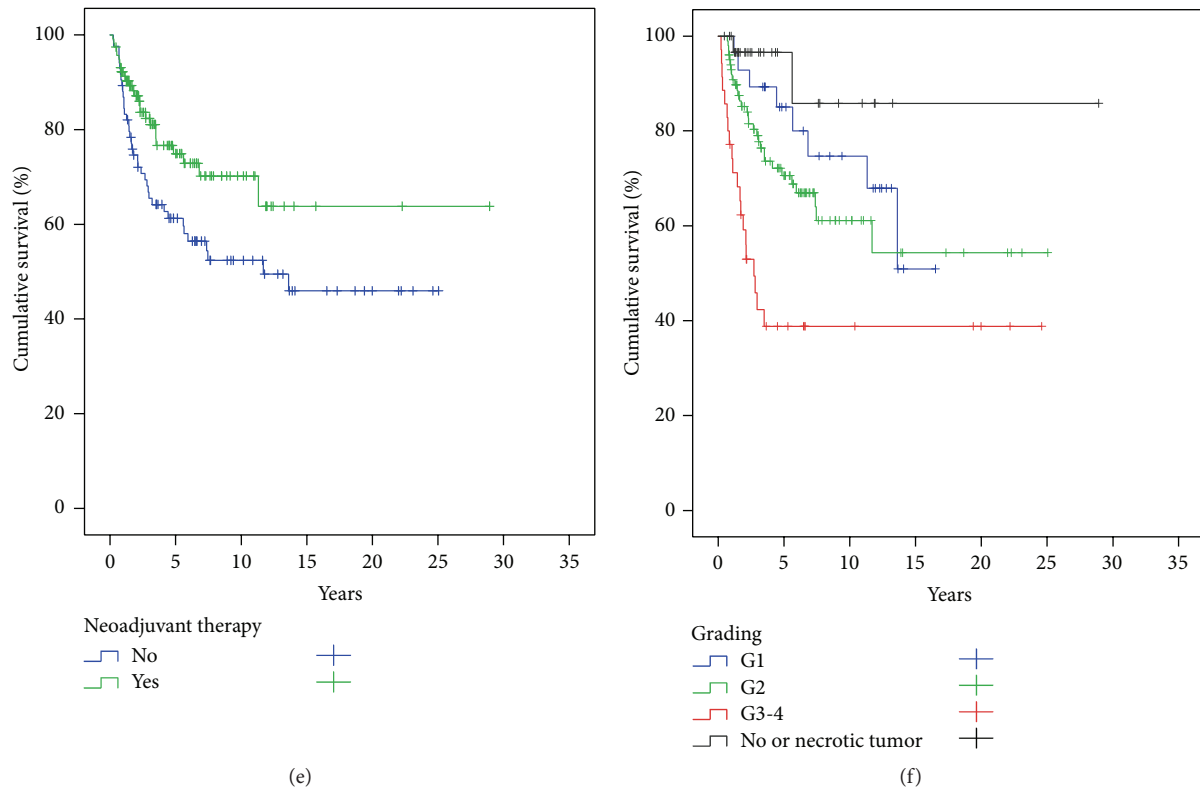


FIGURE 9: Cumulative survival after LT for HCC (HCC recurrence related deaths only) ($n = 199$) (for statistics see Table 4). (a) With the exception of a better survival comparing the *hepatitis C* versus *cryptogenic cirrhosis* subcategories there were no other significant differences for survival related to *underlying diseases*. (b) Survival for UICC I and II staged tumors was comparable to the reference category (*no or necrotic tumors*), while the risk for HCC recurrence death increased significantly and equivalently with each step of UICC-7 staging above IIIA. (c) Tumors outside the histologic MILAN were significant hazards for survival. Nevertheless, even in the group of patients transplanted outside the histologic MILAN (*hMILAN*) the cumulative survival was 30% at 25 years after liver transplantation. The cumulative survival of patients who were transplanted inside the histologic MILAN (*hMILAN*) was 72% at 30 years after liver transplantation. (d) Small (V1) and large (V2) *vascular infiltration* were significant hazards for a HCC recurrence related death, while tumors without (V0) *vascular infiltration* were no significant hazards for survival compared to the reference category of *no or necrotic tumors*. (e) *Neoadjuvant therapy* in general decreased the HCC recurrence related death rate significantly. (f) *Tumor grading* was a significant predictor of survival. While G1 staged tumors had no increased risk for HCC recurrence related death compared to the reference category (*no or necrotic tumors*), G2 and G3-4 graded tumors were identified as significant hazards for HCC recurrence related deaths. The risk to die from HCC recurrence after liver transplantation was twice as high for G3-4 tumors as compared to G2 graded tumors.

a higher predictive power compared to the usual *iMILAN* classification. Further refined biometrical studies on this issue are in progress.

Abbreviations

LT: Liver transplantation
 HCC: Hepatocellular carcinoma
 HCCR: Hepatocellular carcinoma recurrence
 hMILAN: Histology-based MILAN
 iMILAN: Imaging-based MILAN.

Conflict of Interests

The work of the author Harald Schrem was supported by a grant from the German Federal Ministry of Education and Research (reference number 01EO1302). Otherwise, this

research did not receive any specific grant from any funding agency in the public, commercial, or nonprofit sector. All authors declare that there is no conflict of interests that could be perceived as prejudicing the impartiality of the research reported.

Authors' Contribution

Nikos Emmanouilidis and Rickmer Peters contributed equally. Nikos Emmanouilidis and Rickmer Peters participated in research design, participated in the writing of paper, participated in the performance of the research, and participated in data analysis. Bastian P. Ringe participated in the writing of paper and participated in the performance of the research. Zeynep Güner, Wolf Ramackers, Hüseyin Bektas, Frank Lehner, Michael Manns, and Jürgen Klempnauer participated in the performance of the research. Harald

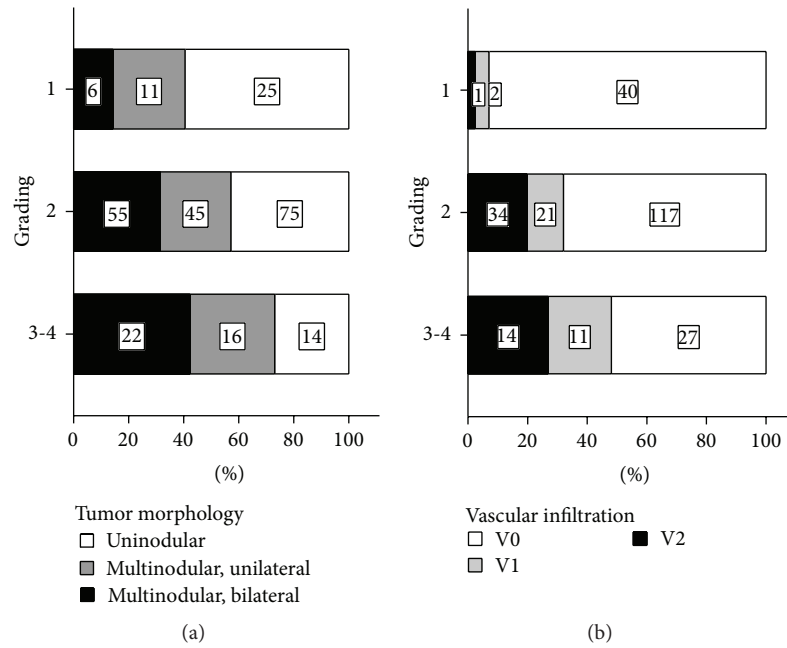


FIGURE 10: (a) Proportion of *vascular infiltration* with respect to tumor grading (G). The incidence of *vascular infiltration* and the proportion of small (V1) and large (V2) infiltrated vessels increased with each step of tumor dedifferentiation (G1 → G2 → G3-4) ($\chi^2 p = 0.006$). The overall incidence of *vascular infiltration* was 7%, 31%, and 48% for G1, G2, and G3-4 graded tumors, respectively. The proportion of small *vascular infiltration* (V1) was 5%, 12%, and 21% for G1, G2, and G3-4 graded tumors, respectively. The proportion of large vessel *infiltration* (V2) was 2%, 20%, and 27% for G1, G2, and G3-4 graded tumors, respectively. (b) Proportions of uninodular/multinodular tumors with unilateral/bilateral hepatic spreading in G1-4 graded tumors. There was a close correlation between tumor grading and intrahepatic tumor spreading. The proportion of multinodular and bilateral spread tumors increased with each step of tumor dedifferentiation (G1 → G2 → G3-4) ($\chi^2 p = 0.016$). The proportion of uninodular tumors was 59%, 43%, and 27% for G1, G2, and G3-4 graded tumors, respectively. The proportion of multinodular/unilateral tumors was 26%, 26%, and 31% for G1, G2, and G3-4 graded tumors, respectively. The proportion of multinodular/bilateral tumors was 14%, 31%, and 42% for G1, G2, and G3-4 graded tumors, respectively.

Schrem participated in the writing of paper, participated in the performance of the research, and participated in data analysis.

Acknowledgment

The authors are grateful for the database retrieval enabled by Karlheinz Heiringhoff.

References

- [1] C. Langenbuch, "Ein Fall von Resektion eines linksseitigen Schnürlappens der Leber," *Berliner klinische Wochenschrift*, vol. 25, no. 37, 1888.
- [2] W. W. Keen IV, "Report of a case of resection of the liver for the removal of a neoplasm, with a table of seventy-six cases of resection of the liver for hepatic tumors," *Annals of Surgery*, vol. 30, pp. 267-283, 1899.
- [3] A. Lius, "Di un adenoma del fegato," *Gazz Clini*, vol. 23, p. 225, 1903.
- [4] W. Wendel, "Beiträge zur chirurgie der leber," *Archiv für Klinische Chirurgie*, vol. 95, article 887, 1911.
- [5] C. Couinaud, "Intrahepatic distribution of hepatic artery," *Acta Anatomica*, vol. 22, no. 1, pp. 49-81, 1954.
- [6] J. L. Lortat-Jacob, H. G. Robert, and C. Henry, "Excision of the right lobe of the liver for a malignant secondary tumor," *Archives des Maladies de l'Appareil Digestif et des Maladies de La Nutrition*, vol. 41, no. 6, p. 662, 1952.
- [7] I. Honjo and C. Araki, "Total resection of the right lobe of the liver; report of a successful," *The Journal of the International College of Surgeons*, vol. 23, no. 1, part 1, pp. 23-28, 1955.
- [8] A. Brunshwig and D. R. Morton, "Resection of abdominal carcinomas involving the liver and spleen secondarily," *Annals of Surgery*, vol. 124, no. 4, pp. 746-754, 1946.
- [9] S. C. Schiffman, C. E. Woodall, D. A. Kooby et al., "Factors associated with recurrence and survival following hepatectomy for large hepatocellular carcinoma: a multicenter analysis," *Journal of Surgical Oncology*, vol. 101, no. 2, pp. 105-110, 2010.
- [10] H. Lau, S. T. Fan, I. O. L. Ng, and J. Wong, "Long term prognosis after hepatectomy for hepatocellular carcinoma: a survival analysis of 204 consecutive patients," *Cancer*, vol. 83, no. 11, pp. 2302-2311, 1998.
- [11] T. E. Starzl, T. L. Marchioro, K. N. Vonkaulla, G. Hermann, R. S. Brittain, and W. R. Waddell, "Homotransplantation of the liver in humans," *Surgery, Gynecology — Obstetrics*, vol. 117, pp. 659-676, 1963.
- [12] R. Y. Calne, D. J. G. White, K. Rolles, D. P. Smith, and B. M. Herbertson, "Prolonged survival of pig orthotopic heart grafts treated with cyclosporin A," *The Lancet*, vol. 311, no. 8075, pp. 1183-1185, 1978.
- [13] G. Tsoulfas, T. Kawai, N. Elias et al., "Long-term experience with liver transplantation for hepatocellular carcinoma," *Journal of Gastroenterology*, vol. 46, no. 2, pp. 249-256, 2011.

- [14] R. Y. Calne and R. Williams, "Orthotopic liver transplantation: the first 60 patients," *British Medical Journal*, vol. 1, no. 6059, pp. 471–476, 1977.
- [15] J. G. O'Grady, R. J. Polson, K. Rolles, R. Y. Calne, and R. Williams, "Liver transplantation for malignant disease. Results in 93 consecutive patients," *Annals of Surgery*, vol. 207, no. 4, pp. 373–379, 1988.
- [16] H. Bismuth, B. G. Ericzon, K. Rolles et al., "Hepatic transplantation in Europe. First report of the European liver transplant registry," *The Lancet*, vol. 2, no. 8560, pp. 674–676, 1987.
- [17] B. Kremer, "Liver transplantation in tumors," *Langenbecks Arch Chir Suppl II Verh Dtsch Ges Chir*, vol. 283, 1989.
- [18] B. I. Carr, A. Zajko, K. Bron, P. Orons, J. Sammon, and R. Baron, "Phase II study of Spherex (degradable starch microspheres) injected into the hepatic artery in conjunction with doxorubicin and cisplatin in the treatment of advanced-stage hepatocellular carcinoma: interim analysis," *Seminars in Oncology*, vol. 24, no. 2, supplement 6, pp. S6–S6, 1997.
- [19] W. Y. Lau, E. C. H. Lai, and T. W. T. Leung, "Current role of selective internal irradiation with yttrium-90 microspheres in the management of hepatocellular carcinoma: a systematic review," *International Journal of Radiation Oncology Biology Physics*, vol. 81, no. 2, pp. 460–467, 2011.
- [20] S. Kawai, J. Okamura, M. Ogawa et al., "Prospective and randomized clinical trial for the treatment of hepatocellular carcinoma—a comparison of lipiodol-transcatheter arterial embolization with and without Adriamycin (first cooperative study)," *Cancer Chemotherapy and Pharmacology*, vol. 31, no. 1, supplement, pp. S1–S6, 1992.
- [21] A. Nicolini, P. Fasani, M. A. Manini et al., "Transarterial embolization with microspheres in the treatment of monofocal HCC," *Digestive and Liver Disease*, vol. 41, no. 2, pp. 143–149, 2009.
- [22] F. Branco, C. Bru, R. Vilana, L. Bianchi, and A. A. de Mattos, "Percutaneous ethanol injection before liver transplantation in the hepatocellular carcinoma," *Annals of Hepatology*, vol. 8, no. 3, pp. 220–227, 2009.
- [23] T. Livraghi, S. N. Goldberg, S. Lazzaroni, F. Meloni, L. Solbiati, and G. S. Gazelle, "Small hepatocellular carcinoma: treatment with radio-frequency ablation versus ethanol injection," *Radiology*, vol. 210, no. 3, pp. 655–661, 1999.
- [24] G. K. Abou-Alfa, D. Amadori, A. Santoro et al., "Safety and efficacy of sorafenib in patients with Hepatocellular Carcinoma (HCC) and Child-Pugh A versus B cirrhosis," *Gastrointestinal Cancer Research*, vol. 4, no. 2, pp. 40–44, 2011.
- [25] W. Sun, "Treatment of inoperable HCC after sorafenib: where will the new paradigm take us?" *Gastrointestinal Cancer Research*, vol. 2, no. 1, article 49, 2008.
- [26] A. Bozorgzadeh, M. Orloff, P. Abt et al., "Survival outcomes in liver transplantation for hepatocellular carcinoma, comparing impact of hepatitis C versus other etiology of cirrhosis," *Liver Transplantation*, vol. 13, no. 6, pp. 807–813, 2007.
- [27] S. Roayaie, J. S. Frischer, S. H. Emre et al., "Long-term results with multimodal adjuvant therapy and liver transplantation for the treatment of hepatocellular carcinomas larger than 5 centimeters," *Annals of Surgery*, vol. 235, no. 4, pp. 533–539, 2002.
- [28] M. A. Zimmerman, J. F. Trotter, M. Wachs et al., "Predictors of long-term outcome following liver transplantation for hepatocellular carcinoma: a single-center experience," *Transplant International*, vol. 20, no. 9, pp. 747–753, 2007.
- [29] S. Iwatsuki, J. W. Marsh, and T. E. Starzl, "Survival after liver transplantation in patients with hepatocellular carcinoma," *Princess Takamatsu symposia*, vol. 25, pp. 271–276, 1995.
- [30] G. N. Ioannou, J. D. Perkins, and R. L. Carithers Jr., "Liver transplantation for hepatocellular carcinoma: impact of the MELD allocation system and predictors of survival," *Gastroenterology*, vol. 134, no. 5, pp. 1342–1351, 2008.
- [31] F. T. Lee Jr., "Treatment of hepatocellular carcinoma in cirrhosis: locoregional therapies for bridging to liver transplant," *Liver Transplantation*, vol. 13, no. 11, pp. S24–S26, 2007.
- [32] A. Bharat, D. B. Brown, J. S. Crippin et al., "Pre-liver transplantation locoregional adjuvant therapy for hepatocellular carcinoma as a strategy to improve long-term survival," *Journal of the American College of Surgeons*, vol. 203, no. 4, pp. 411–420, 2006.
- [33] D. Cherqui, A. Laurent, N. Mocellin et al., "Liver resection for transplantable hepatocellular carcinoma: long-term survival and role of secondary liver transplantation," *Annals of Surgery*, vol. 250, no. 5, pp. 738–745, 2009.
- [34] R. T.-P. Poon, T. F. Sheung, M. L. Chung, L. L. Chi, and J. Wong, "Long-term survival and pattern of recurrence after resection of small hepatocellular carcinoma in patients with preserved liver function: implications for a strategy of salvage transplantation," *Annals of Surgery*, vol. 235, no. 3, pp. 373–382, 2002.
- [35] C. Zavaglia, L. De Carlis, A. B. Alberti et al., "Predictors of long-term survival after liver transplantation for hepatocellular carcinoma," *The American Journal of Gastroenterology*, vol. 100, no. 12, pp. 2708–2716, 2005.
- [36] A. Vitale, E. Gringeri, M. Valmasoni et al., "Long-term results of liver transplantation for hepatocellular carcinoma: an update of the University of Padova experience," *Transplantation Proceedings*, vol. 39, no. 6, pp. 1892–1894, 2007.
- [37] A. Norén, J. Urdzik, F. Duraj, C. E. Barbier, B.-M. Karlsson, and U. Haglund, "Long-term follow-up after transarterial chemotherapy for hepatocellular carcinoma in a Scandinavian centre," *HPB*, vol. 12, no. 9, pp. 637–643, 2010.
- [38] C. J. Gannon, F. Izzo, T. A. Aloia et al., "Can hepatocellular cancer screening increase the proportion of long-term survivors?" *Hepato-Gastroenterology*, vol. 56, no. 93, pp. 1152–1156, 2009.
- [39] U. Baccarani, G. L. Adani, C. Avellini et al., "Comparison of clinical and pathological staging and long-term results of liver transplantation for hepatocellular carcinoma in a single transplant center," *Transplantation Proceedings*, vol. 38, no. 4, pp. 1111–1113, 2006.
- [40] A. Lauterio, S. Di Sandro, A. Slim et al., "Hepatocellular carcinoma in unrelated viral cirrhosis: long-term results after liver transplantation," *Transplantation Proceedings*, vol. 42, no. 4, pp. 1212–1215, 2010.
- [41] R. Cabrera, R. Dhanasekaran, J. Caridi et al., "Impact of transarterial therapy in hepatitis C-related hepatocellular carcinoma on long-term outcomes after liver transplantation," *American Journal of Clinical Oncology: Cancer Clinical Trials*, vol. 35, no. 4, pp. 345–350, 2012.
- [42] G. Colella, G. F. Rondinara, L. De Carlis et al., "Liver transplantation for hepatocellular carcinoma: prognostic factors associated long-term survival," *Transplant International*, vol. 9, supplement 1, pp. S109–S111, 1996.
- [43] L. E. Muñoz, H. Nañez, F. Rositas et al., "Long-term complications and survival of patients after orthotopic liver transplantation," *Transplantation Proceedings*, vol. 42, no. 6, pp. 2381–2382, 2010.

- [44] D. Dubay, C. Sandroussi, L. Sandhu et al., "Liver transplantation for advanced hepatocellular carcinoma using poor tumor differentiation on biopsy as an exclusion criterion," *Annals of Surgery*, vol. 253, no. 1, pp. 166–172, 2011.
- [45] J. P. Duffy, A. Vardanian, E. Benjamin et al., "Liver transplantation criteria for hepatocellular carcinoma should be expanded: a 22-year experience with 467 patients at UCLA," *Annals of Surgery*, vol. 246, no. 3, pp. 502–511, 2007.
- [46] N. Onaca, G. L. Davis, R. M. Goldstein, L. W. Jennings, and G. B. Klintmalm, "Expanded criteria for liver transplantation in patients with hepatocellular carcinoma: a report from the international registry of hepatic tumors in liver transplantation," *Liver Transplantation*, vol. 13, no. 3, pp. 391–399, 2007.
- [47] W.-C. Tung, Y.-J. Huang, S. W. Leung et al., "Incidence of needle tract seeding and responses of soft tissue metastasis by hepatocellular carcinoma postradiotherapy," *Liver International*, vol. 27, no. 2, pp. 192–200, 2007.
- [48] M. Caselitz, N. Masche, J. S. Bleck et al., "Increasing sensitivity of morphological diagnosis in hepatocellular carcinoma (HCC) by combination of cytological and fine-needle histological examination after ultrasound guided fine needle biopsy," *Zeitschrift fur Gastroenterologie*, vol. 41, no. 6, pp. 559–564, 2003.
- [49] J. Schölmerich, "Is ultrasound-guided fine-needle biopsy effective for diagnosis of early HCC in liver cirrhosis?" *Nature Clinical Practice Gastroenterology and Hepatology*, vol. 2, no. 1, pp. 16–17, 2005.



Hindawi
Submit your manuscripts at
<http://www.hindawi.com>

