

# Prognostic value of restless legs syndrome in hemodialysis patients: a systematic review and meta-analysis

Jing Li<sup>1,\*</sup>  
Tao Zhang<sup>2,\*</sup>  
Qingmiao Shao<sup>3</sup>

<sup>1</sup>Department of Transplantation, The First Central Hospital of Tianjin,

<sup>2</sup>Department of Nephrology, The First Affiliated Hospital of Tianjin Chinese Medical University, <sup>3</sup>Department of Cardiology, The Second Hospital of Tianjin Medical University, Tianjin, People's Republic of China

\*These authors contributed equally to this work

**Background:** Previous studies have revealed that restless legs syndrome (RLS) not only is frequently prevalent in dialysis patients but also increases the risk of death in dialysis patients, especially in hemodialysis (HD) patients. However, inconsistent results also still exist, having attracted confusion and discussion. Owing to mixed and inconclusive results, we conducted to perform the comprehensive meta-analysis to evaluate the potential prognostic value of RLS in HD patients.

**Materials and methods:** We conducted a systematic literature search using electronic databases (PubMed, Ovid, Embase and Web of Science) to identify relevant studies reporting on all-cause mortality and cardiovascular (CV) events in HD patients suffering from RLS. We searched the literature published up to December 5, 2016, or earlier. We used both fixed- and random-effects models to calculate the overall effect estimate. An  $I^2 > 50\%$  indicates at least moderate statistical heterogeneity. A sensitivity analysis and subgroup analysis were performed to find the origin of heterogeneity.

**Results:** A total of four studies including 1,839 patients found that there was no significant association between RLS and all-cause mortality (hazard ratio [HR]: 1.649; 95% confidence interval [CI]: 0.778–3.496) and CV events (HR: 0.863; 95% CI: 0.600–1.127) in HD patients. Heterogeneity among the studies was observed for all-cause mortality ( $I^2=80.7\%$ ,  $P=0.001$ ).

**Conclusion:** Our meta-analysis suggests that there was no significant effect of RLS on all-cause mortality and CV events in HD patients. Therefore, large-scale and well-designed studies are needed to validate the association between RLS and the risk of death in HD patients.

**Keywords:** restless legs syndrome, hemodialysis, cardiovascular events, mortality, meta-analysis

## Introduction

Restless legs syndrome (RLS), a neurological disorder characterized by an almost irresistible urgent, uncontrolled need to move the limbs that is exacerbated by rest and temporarily relieved by motor activity, is worse in the evening and overnight with significant relief in the morning.<sup>1–3</sup> RLS affects 5%–10% of adults in the general population and is also associated with increased mortality.<sup>4–6</sup> Previous studies found that the prevalence of RLS among hemodialysis (HD) patients is significantly higher than that of the general population.<sup>7,8</sup> In recent years, RLS, as a common neurological and sensorimotor disorder, has received more attention from the potential prognostic value in HD patients. A series of studies that have been conducted to investigate the association between RLS and adverse outcomes found that RLS increased all-cause mortality and cardiovascular (CV) events in HD patients.<sup>9–11</sup> The relevant mechanisms and factors involved in the relationship between RLS and prognostic

Correspondence: Qingmiao Shao  
Department of Cardiology, The Second Hospital of Tianjin Medical University, No 23 Pingjiang Road, Hexi District, Tianjin 300211, People's Republic of China  
Tel +86 22 8832 8617  
Fax +86 22 2826 1158  
Email shaoqingmiao@126.com

value in HD patients are not well clarified. Then, Stefanidis et al<sup>12</sup> reported a controversial result that RLS does not affect 3-year mortality in HD patients. Therefore, taking the current research situation into consideration, we performed a systematic review and meta-analysis of prospective observational studies to evaluate the association between RLS and adverse outcomes in HD patients.

## Materials and methods

This meta-analysis followed the Preferred Reporting Items for Systematic Reviews and Meta-Analyses (PRISMA) criteria.<sup>13</sup>

### Search strategies and inclusion criteria

PubMed, Ovid, Embase and Web of Science were searched by two independent researchers (JL and TZ) to identify the relevant studies that evaluated the association between RLS and adverse outcomes in HD patients up to December 5, 2016. The following search terms (in title, abstract or keywords fields) were used as follows: “restless legs syndrome” or “RLS” and “renal failure” or “end-stage renal disease or ESRD” or “hemodialysis or HD” or “dialysis”. Titles and abstracts as well as the reference lists of all of the identified reports were examined independently by two reviewers (JL and TZ) to include potentially relevant studies that reported the association between RLS and adverse outcomes in HD patients.

Studies were considered eligible for this study if they met the following criteria: 1) if they were of a prospective observational study design; 2) if they clearly defined the adverse outcomes, including all-cause mortality and CV events; 3) if they reported the hazard ratio (HR) and the corresponding 95% confidence interval (CI) for RLS and all-cause mortality/CV events in HD patients; 4) only studies that included patients with a diagnosis of RLS that is clearly defined and according to the current guideline-based definitions.

### Data extraction

Two reviewers (JL and TZ) independently screened the abstracts or titles of the studies from the electronic search to identify all potential eligible studies. Potentially relevant reports were then retrieved as complete manuscripts and assessed for compliance with the inclusion criteria. Data extraction was performed from eligible studies by two blinded reviewers (JL and TZ) using a standard data extraction form to determine the eligibility for inclusion and extract data. The extracted data elements of this review included: 1) publication details: first author’s last name,

publication year and studied population; 2) study design; 3) characteristics of the studied population: sample size, age, gender, the proportion of combined diabetes mellitus and duration of follow-up; 4) end point events; 5) the number of deaths during the follow-up period, and HR and 95% CI about RLS and adverse outcomes in HD patients. Disagreements were resolved by consensus after rechecking the source data and consultation with the third reviewer (QS).

### Quality assessment

To limit the heterogeneity secondary to differences among study designs, the quality of each study was evaluated according to a critical review checklist of the Dutch Cochrane Center which was proposed by Meta-analysis Of Observational Studies in Epidemiology (MOOSE).<sup>14</sup> The key points of this checklist are as follows: 1) clear definition of study population; 2) clear definition of outcomes and outcome assessment; 3) independent assessment of outcome parameters; 4) sufficient duration of follow-up; 5) no selective loss during follow-up and 6) important confounders and prognostic factors identified. If a study did not clearly mention one of these key points, we considered that it had not been performed and, consequently, that there was a possibility for the underestimation of the reported characteristics.

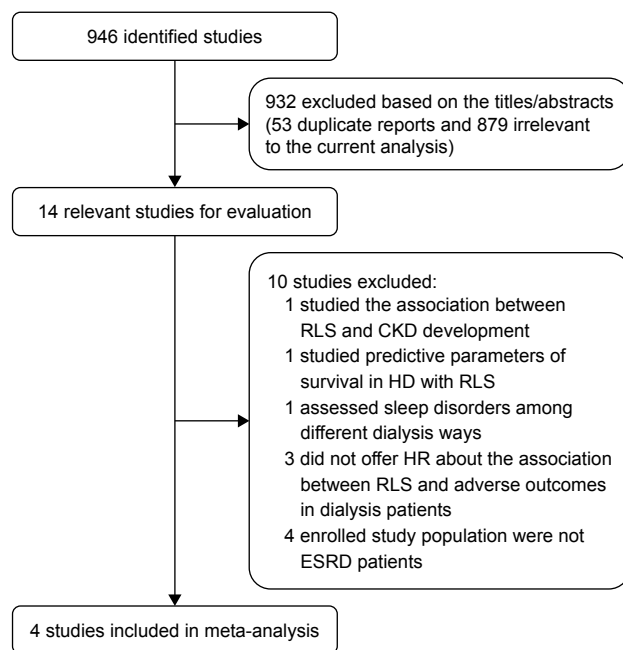
### Statistical analysis

Pooled effect sizes were presented as the HR with 95% CI. We conducted fixed-effects meta-analysis using the inverse variance method for pooling effect sizes, and random-effects meta-analysis using the inverse variance heterogeneity method. To evaluate the heterogeneity across studies, we used  $I^2$  derived from the chi-square test. An  $I^2 > 50\%$  indicates at least moderate statistical heterogeneity. When pooled analysis resulted in significant heterogeneity, the random-effects model was used. To explore the sources of heterogeneity, we performed sensitivity and subgroup analyses (sample size or geographic area). The sensitivity analysis was also performed in a random predefined manner. Publication bias was evaluated using the funnel plot. Statistical significance was defined as a two-tailed  $P$ -value of 0.05. All statistical analyses were performed using Stata 11 (Stata Corp LP, College Station, TX, USA).

## Results

### Literature search outcome

A flow diagram of the data search and study selection is presented in Figure 1. A total of 946 studies were found using our search criteria. We identified 53 duplicate studies, which were



**Figure 1** Flow diagram of the selection process.

**Abbreviations:** CKD, chronic kidney disease; ESRD, end-stage renal disease; HD, hemodialysis; HR, hazard ratio; RLS, restless legs syndrome.

discarded. The remaining 893 abstracts were screened further, and we excluded 879 studies, because they were either unrelated, irrelevant, review articles or editorials. Then, full-text studies were then retrieved for detailed evaluation. Of the 14 articles, seven did not meet the inclusion criteria and three did not offer HR about RLS and all-cause mortality or CV events in HD patients, which were both excluded. The remaining four studies were included in our meta-analysis.<sup>9–12</sup>

## Study characteristics and quality assessment

A total of four studies with 1,839 subjects were included in our meta-analysis study.<sup>9–12</sup> The main features of the studies

on the association between RLS and adverse outcomes in HD patients are given in Table 1, whereas the quality assessment of the four studies is presented in Table 2. Among these studies, two of four were conducted in Europe,<sup>9,12</sup> with the exception of two conducted in Asia.<sup>10,11</sup> All eligible studies were published between 2011 and 2015. Four studies were all prospective observational studies. The sample size ranged from 67 to 1,093. Mean patients' age ranged from 63.6 to 65 years old. The proportion of male in the studies ranged between 56.7% and 63%, and the mean follow-up periods varied from 18 to 44.4 months.

## RLS and adverse outcomes in HD patients

### All-cause mortality

Four studies evaluated the prognostic importance of RLS for all-cause mortality in HD patients.<sup>9–12</sup> When pooling data from the studies together, we found that there was no significant association between RLS and all-cause mortality in HD patients (HR: 1.649; 95% CI: 0.778–3.496). Heterogeneity among the studies was observed for all-cause mortality ( $I^2=80.7%$ ,  $P=0.001$ ; Figure 2).

### CV events

Three studies evaluated the prognostic importance of RLS for CV events in HD patients.<sup>9–11</sup> When pooling data from the studies together, we found that there was no significant effect of RLS on the development of CV events in HD patients (HR: 0.863; 95% CI: 0.600–1.127) with no heterogeneity among the studies ( $I^2=2.8%$ ,  $P=0.357$ ; Figure 3).

## Sensitivity and subgroup analysis

Of the four studies that reported the association between RLS and all-cause mortality in HD patients,<sup>9–12</sup> the heterogeneity

**Table 1** Characteristics of the four studies included in the meta-analysis

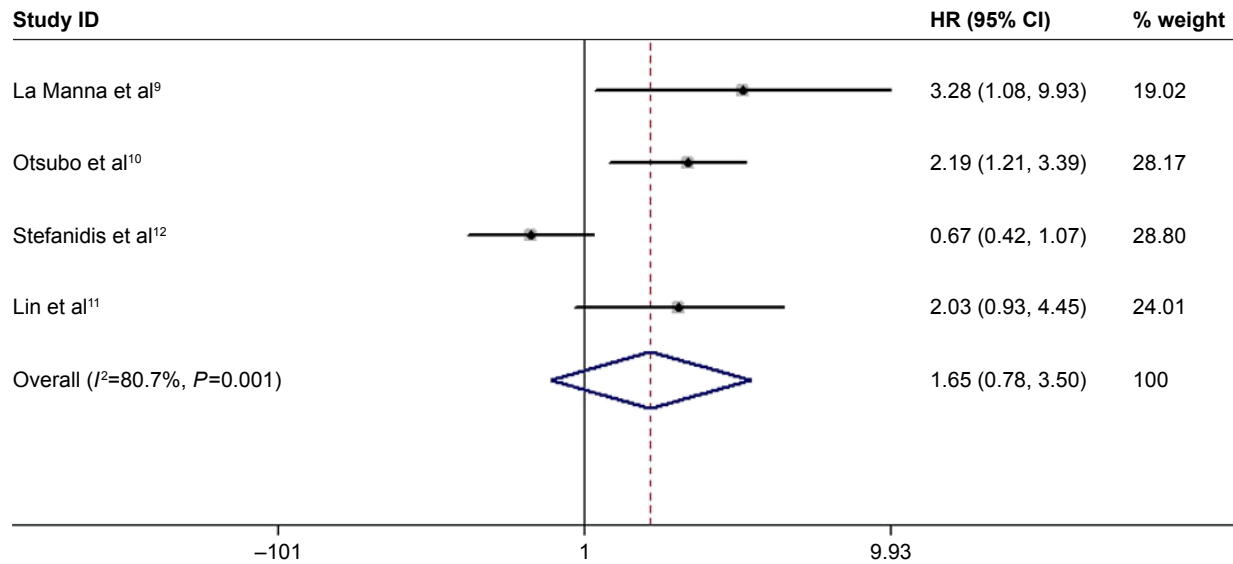
Author	Year	Study design	Country and study population	Patients, n	Men, n (%)	Mean age, years	DM, %	Follow-up, months	Death, n	End point
La Manna et al <sup>9</sup>	2011	POS	Italy, HD patients	100	63 (63)	65	29	18	20	CV events and all-cause mortality
Otsubo et al <sup>10</sup>	2014	POS	Japan, HD patients	67	NM	NM	NM	33.6	15	All-cause and CV mortality
Stefanidis et al <sup>12</sup>	2015	POS	Greece, HD patients	579	343 (59.2)	65	23.3	36	118	3-year all-cause mortality (initiation of study); 5-year mortality (initiation of HD)
Lin et al <sup>11</sup>	2015	POS	China, HD patients	1,093	620 (56.7)	63.6	37.5	44.4	132	CV events and all-cause mortality

**Abbreviations:** CV, cardiovascular; DM, diabetes mellitus; HD, hemodialysis; NM, not mentioned; POS, prospective observational study.

**Table 2** Assessment of the quality of the four included studies

Evaluation index	La Manna et al <sup>9</sup>	Otsubo et al <sup>10</sup>	Stefanidis et al <sup>12</sup>	Lin et al <sup>11</sup>
Clear definition of study population?	Yes	Yes	Yes	Yes
Clear definition of outcomes and outcome assessment?	Yes	Yes	Yes	Yes
Independent assessment of outcome parameters?	Yes	Yes	Yes	Yes
Sufficient duration of follow-up?	Yes	Yes	Yes	Yes
No selective loss during follow-up?	Yes	NM	Yes	Yes
Important confounders and prognostic factors identified?	Yes	Yes	Yes	Yes

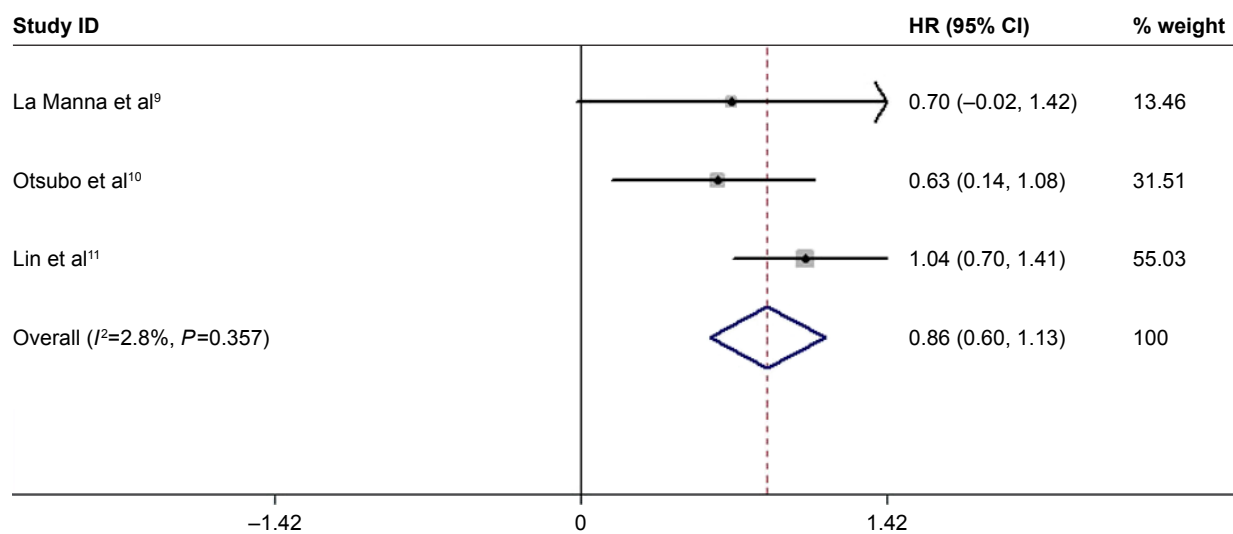
**Abbreviation:** NM, not mentioned.



**Figure 2** Forest plot demonstrating the association between RLS and all-cause mortality in HD patients.

**Note:** Weights are from random-effects analysis.

**Abbreviations:** CI, confidence interval; HD, hemodialysis; HR, hazard ratio; RLS, restless legs syndrome.



**Figure 3** Forest plot demonstrating the association between RLS and cardiovascular events in HD patients.

**Abbreviations:** CI, confidence interval; HD, hemodialysis; HR, hazard ratio; RLS, restless legs syndrome.

Neuropsychiatric Disease and Treatment downloaded from https://www.dovepress.com/ by 137.108.70.14 on 24-Jan-2020 For personal use only.

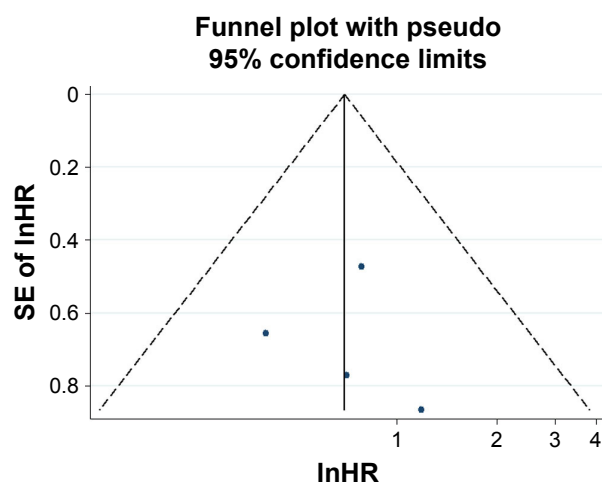
test showed that there was significant differences among individual studies ( $P < 0.05$ ;  $I^2 = 80.7\%$ ). A sensitivity analysis was performed to find the origin of heterogeneity. After removing the study by La Manna et al,<sup>9</sup> which had a short follow-up period, the analysis did not find significant influences on heterogeneity across studies or overall results. Then, we performed a subgroup analysis according to the sample size ( $n < 200$  or  $n > 200$ ), and we found that there was no significant heterogeneity between the two small sample size studies ( $P = 0.517$ ;  $I^2 = 0.0\%$ )<sup>9,10</sup> and there was a significant heterogeneity between the remaining two studies ( $P = 0.017$ ;  $I^2 = 82.5\%$ ).<sup>11,12</sup> In addition, we also performed a prespecified subgroup analysis of studies with geographic area of Asian and non-Asian. The proportion of total variation across studies that was due to heterogeneity rather than chance was  $I^2 = 0.0\%$  ( $P = 0.874$ ) in the two studies with Asian geographic area,<sup>10,11</sup> and  $I^2 = 85.1\%$  ( $P = 0.01$ ) in the two studies with non-Asian geographic area.<sup>9,12</sup> Therefore, sample size and geographic area may be a possible source of heterogeneity.

## Publication bias

The result of the funnel plot for adverse outcomes in HD patients was symmetrical, indicating no publication bias (Figure 4).

## Discussion

In this meta-analysis, four studies involving 1,839 HD patients were analyzed. The result suggests that RLS does not increase the risk of all-cause mortality and CV events in HD patients.



**Figure 4** Funnel plot for the association between RLS and all-cause mortality in HD patients.

**Abbreviations:** HD, hemodialysis; HR, hazard ratio; RLS, restless legs syndrome; SE, standard error.

In the past years, large epidemiological studies have indicated a positive association between RLS and all-cause mortality in the general population.<sup>4,15</sup> Similarly, some clinic-based studies found the relationship between RLS and all-cause mortality or CV events among subjects with end-stage renal disease, in either transplanted or dialysis patients.<sup>9–11</sup> It is reported that RLS mostly suffers from insufficient and disturbed sleep, which in turn affects a large number of physiological and psychological parameters that may be associated with increased mortality.<sup>16</sup> In addition, comorbidities, such as diabetes, high blood pressure, iron deficiency, cancer and insomnia, in HD patients with RLS may increase the risk of mortality and CV events.<sup>17,18</sup> Moreover, RLS plays a significant role in the sympathetic hyperactivity which results in non-dipping nocturnal blood pressure and atherosclerotic plaque rupture, leading to heart disorders.<sup>19</sup> Some direct evidences are linked to RLS and CV events, especially for hypertension or cardiac dysfunction in HD patients.<sup>20,21</sup> Surprisingly, our results revealed no evidence of association between RLS and all-cause mortality in HD patients, as for CV events.

There are several possible explanations for the discrepancies in the results regarding this association. First, this lack of association may lie in the different criteria used in the selection of patients. For example, Stefanidis et al<sup>12</sup> reported that the age of patients was younger than those without RLS; Lin et al<sup>11</sup> reported that RLS patients had higher diabetes prevalence, whereas La Manna et al<sup>9</sup> reported that RLS patients had lower frequency of rest diuresis of  $> 500$  mL/day. In addition, differences may vary with geographic areas. Age, diabetes and missing rest diuresis are all indubitably strong mortality predictors. While of course adjustments for confounders were performed, whether in our study or in the past studies, confounding bias might not be abolished, even with properly planned multivariate analysis. Second, samples sizes of several of the studies included in our meta-analysis are in the low range compared with genetic studies for other diseases. We performed a subgroup analysis according to the sample size ( $n < 200$  or  $n > 200$ ), and we found that there was also significant heterogeneity between the two large sample size studies.<sup>9,10</sup> Nonetheless, more comprehensive studies and larger samples are necessary to conclusively determine the presence of this association.

The current study does have some limitations that should be considered. First, the heterogeneity test showed that there was a significant difference among individual studies. The potential sources of differences may be sample



size and geographic area. Second, the complexity of complications related to HD patients is what we should take into consideration. It is possible that there may be residual confounding from conditions not included in the analysis. Third, we did not further analyze in the severity classification measurements of RLS, which is a common limitation in this study. The levels of severity on RLS and duration of RLS symptoms may have an important influence on measured outcomes. Finally, considering current incomplete data, we did not further analyze in background therapy, such as the use of a dopamine agonist, which may have a hazardous effect on cardiac function.

## Conclusion

Our meta-analysis suggests that there may be no significant effect of RLS on all-cause mortality and CV events in HD patients. There are several possible explanations for the discrepancies in the results regarding this association, such as different criteria used in the selection of patients, geographic areas, age, diabetes, missing rest-diuresis, etc. Given that, it needs large sample and multicenter studies to further assess whether RLS can directly predict all-cause mortality and CV events in HD patients.

## Disclosure

The authors report no conflicts of interest in this work.

## References

- Ekblom KA. Restless legs syndrome. *Neurology*. 1960;10:868–873.
- Allen RP, Picchetti D, Hening WA, et al; Restless Legs Syndrome Diagnosis and Epidemiology workshop at the National Institutes of Health; International Restless Legs Syndrome Study Group. Restless legs syndrome: diagnostic criteria, special considerations, and epidemiology. A report from the restless legs syndrome diagnosis and epidemiology workshop at the National Institutes of Health. *Sleep Med*. 2003;4(2):101–119.
- Garcia-Borreguero D. From restless legs syndrome to Willis-Ekblom disease: a condition reaches full age. *Sleep Med Rev*. 2012;16:281–282.
- Li Y, Wang W, Winkelman JW, Malhotra A, Ma J, Gao X. Prospective study of restless legs syndrome and mortality among men. *Neurology*. 2013;81(1):52–59.
- Mallon L, Broman JE, Hetta J. Restless legs symptoms with sleepiness in relation to mortality: 20-year follow-up study of a middle-aged Swedish population. *Psychiatry Clin Neurosci*. 2008;62(4):457–463.

- Molnar MZ, Lu JL, Kalantar-Zadeh K, Kovesdy CP. Association of incident restless legs syndrome with outcomes in a large cohort of US veterans. *J Sleep Res*. 2016;25(1):47–56.
- Lin CH, Wu VC, Li WY, et al. Restless legs syndrome in end-stage renal disease: a multicenter study in Taiwan. *Eur J Neurol*. 2013;20(7):1025–1031.
- Takaki J, Nishi T, Nangaku M, et al. Clinical and psychological aspects of restless legs syndrome in uremic patients on hemodialysis. *Am J Kidney Dis*. 2003;41(4):833–839.
- La Manna G, Pizza F, Persici E, et al. Restless legs syndrome enhances cardiovascular risk and mortality in patients with end-stage kidney disease undergoing long-term hemodialysis treatment. *Nephrol Dial Transplant*. 2011;26:1976–1983.
- Otsubo S, Tsuchiya K, Akiba T, Nitta K. Relationship between restless legs syndrome and mortality in hemodialysis patients. *Nephrol Dial Transplant*. 2014;29(suppl 3):iii285.
- Lin CH, Sy HN, Chang HW, et al. Restless legs syndrome is associated with cardio/cerebrovascular events and mortality in end-stage renal disease. *Eur J Neurol*. 2015;22(1):142–149.
- Stefanidis I, Vainas A, Giannaki CD, et al. Restless legs syndrome does not affect 3-year mortality in hemodialysis patients. *Sleep Med*. 2015;16(9):1131–1138.
- Swartz MK. The PRISMA statement: a guideline for systematic reviews and meta-analyses. *J Pediatr Health Care*. 2011;25(1):1–2.
- Stroup DF, Berlin JA, Morton SC, et al. Meta-analysis of observational studies in epidemiology: a proposal for reporting. Meta-analysis Of Observational Studies in Epidemiology (MOOSE) Group. *JAMA*. 2000;283(15):2008–2012.
- Li Y, Walters AS, Chiuve SE, Rimm EB, Winkelman JW, Gao X. Prospective study of restless legs syndrome and coronary heart disease among women. *Circulation*. 2012;126(14):1689–1694.
- Cappuccio FP, D'Elia L, Strazzullo P, Miller MA. Sleep duration and all-cause mortality: a systematic review and meta-analysis of prospective studies. *Sleep*. 2010;33(5):585–592.
- Gao X, Schwarzschild MA, O'Reilly EJ, Wang H, Ascherio A. Restless legs syndrome and Parkinson's disease in men. *Mov Disord*. 2010;25:2654–2657.
- Elwood P, Hack M, Pickering J, Hughes J, Gallacher J. Sleep disturbance, stroke, and heart disease events: evidence from the Caerphilly cohort. *J Epidemiol Community Health*. 2006;60(1):69–73.
- Walters AS, Rye DB. Review of the relationship of restless legs syndrome and periodic limb movements in sleep to hypertension, heart disease, and stroke. *Sleep*. 2009;32(5):589–597.
- Gholamrezaei A, Amra B, Mortazavi M. Cardiovascular risk and mortality in end-stage renal disease patients with restless legs syndrome; need for further investigation and looking for underlying mechanisms. *Sleep Med*. 2013;14(4):385–386.
- Giannini G, Zanigni S, Melotti R, et al. Association between restless legs syndrome and hypertension: a preliminary population-based study in South Tyrol, Italy. *Eur J Neurol*. 2014;21(1):72–78.

### Neuropsychiatric Disease and Treatment

### Publish your work in this journal

Neuropsychiatric Disease and Treatment is an international, peer-reviewed journal of clinical therapeutics and pharmacology focusing on concise rapid reporting of clinical or pre-clinical studies on a range of neuropsychiatric and neurological disorders. This journal is indexed on PubMed Central, the 'PsycINFO' database and CAS,

Submit your manuscript here: <http://www.dovepress.com/neuropsychiatric-disease-and-treatment-journal>

Dovepress

and is the official journal of The International Neuropsychiatric Association (INA). The manuscript management system is completely online and includes a very quick and fair peer-review system, which is all easy to use. Visit <http://www.dovepress.com/testimonials.php> to read real quotes from published authors.