



# Comparative analyses of olfactory systems in terrestrial crabs (Brachyura): evidence for aerial olfaction?

Jakob Krieger<sup>1,\*</sup>, Philipp Braun<sup>1,\*</sup>, Nicole T. Rivera<sup>2</sup>, Christoph D. Schubart<sup>2</sup>, Carsten H.G. Müller<sup>3</sup> and Steffen Harzsch<sup>1</sup>

<sup>1</sup>Zoological Institute and Museum, Department of Cytology and Evolutionary Biology, Ernst-Moritz-Arndt Universität Greifswald, Greifswald, Germany

<sup>2</sup>Institute for Zoology, Department of Zoology & Evolution, Universität Regensburg, Regensburg, Germany

<sup>3</sup>Zoological Institute and Museum, Department of General and Systematic Zoology, Ernst-Moritz-Arndt Universität Greifswald, Greifswald, Germany

\*These authors contributed equally to this work.

## ABSTRACT

Adaptations to a terrestrial lifestyle occurred convergently multiple times during the evolution of the arthropods. This holds also true for the “true crabs” (Brachyura), a taxon that includes several lineages that invaded land independently. During an evolutionary transition from sea to land, animals have to develop a variety of physiological and anatomical adaptations to a terrestrial life style related to respiration, reproduction, development, circulation, ion and water balance. In addition, sensory systems that function in air instead of in water are essential for an animal’s life on land. Besides vision and mechanosensory systems, on land, the chemical senses have to be modified substantially in comparison to their function in water. Among arthropods, insects are the most successful ones to evolve aerial olfaction. Various aspects of terrestrial adaptation have also been analyzed in those crustacean lineages that evolved terrestrial representatives including the taxa Anomala, Brachyura, Amphipoda, and Isopoda. We are interested in how the chemical senses of terrestrial crustaceans are modified to function in air. Therefore, in this study, we analyzed the brains and more specifically the structure of the olfactory system of representatives of brachyuran crabs that display different degrees of terrestriality, from exclusively marine to mainly terrestrial. The methods we used included immunohistochemistry, detection of autofluorescence- and confocal microscopy, as well as three-dimensional reconstruction and morphometry. Our comparative approach shows that both the peripheral and central olfactory pathways are reduced in terrestrial members in comparison to their marine relatives, suggesting a limited function of their olfactory system on land. We conclude that for arthropod lineages that invaded land, evolving aerial olfaction is no trivial task.

**Subjects** Evolutionary Studies, Neuroscience, Zoology

**Keywords** Land crabs, Terrestrialization, Decapods, Neuroanatomy, Immunohistochemistry, Morphometry, Sexual dimorphism, Crustaceans

## INTRODUCTION

Land-living crustaceans are fascinating animals that adapted during a relatively short evolutionary time period to a number of highly diverse terrestrial habitats in which they

Submitted 12 September 2015

Accepted 3 November 2015

Published 22 December 2015

Corresponding author

Steffen Harzsch, [steffen.harzsch@uni-greifswald.de](mailto:steffen.harzsch@uni-greifswald.de)

Academic editor

Darren Williams

Additional Information and  
Declarations can be found on  
page 39

DOI 10.7717/peerj.1433

© Copyright  
2015 Krieger et al.

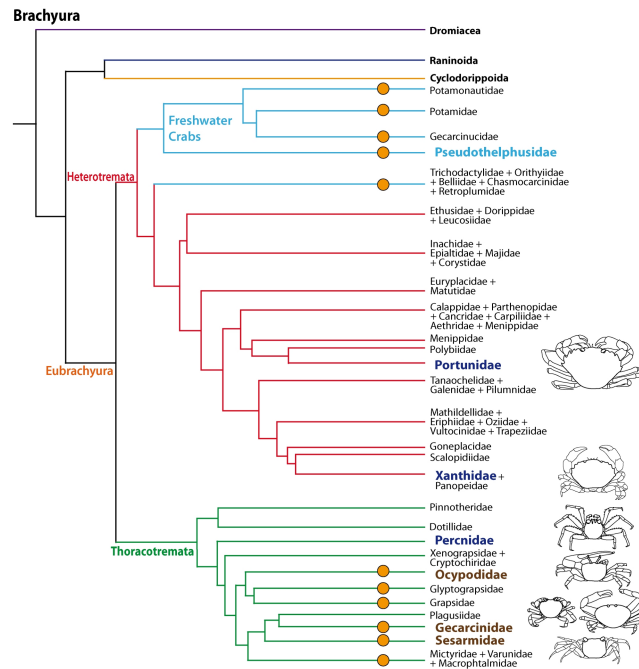
Distributed under  
Creative Commons CC-BY 4.0

**OPEN ACCESS**

have become highly successful, and in some cases the predominant life forms (*Hansson et al., 2011*). Representatives in not less than five major malacostracan crustacean taxa have conquered the terrestrial habitat independently. Because the successful transition from a marine or freshwater habitat to terrestrial life requires a number of physiological adaptations which are important for survival out of water, terrestrial crustaceans constitute an excellent animal group to study evolutionary adaptations related to the invasion of land. Such adaptations include changes to gas exchange, salt and water balance, nitrogenous excretion, thermoregulation, molting, and reproduction (reviews in *Bliss & Mantel, 1968*; *Burggren & McMahon, 1988*; *Greenaway, 1988*; *Greenaway, 1999*; *Greenaway, 2003*; *McMahon & Burggren, 1988*; *Powers & Bliss, 1983*). The Brachyura (short-tailed crabs or “true crabs”) include several lineages that invaded land. The degree of terrestrial adaptation in crustaceans has been categorized into five classes ranging from  $T_1$  to  $T_5$  depending on the degree of independence from immersion in water and the animal’s need to access water for reproduction (*Hartnoll, 1988*; *Greenaway, 1999*; *Powers & Bliss, 1983*; but see *Schubart et al., 2000* for an alternative classification). In this traditional classification, several brachyuran taxa have been ranked within the two highest grades of terrestrial adaptation (e.g., Gecacinidae, and some representatives of the Sesarmidae, Potamidae, Gecarcinidae, Potamonautidae, Pseudothelphusidae, and Trichodactylidae), whereas many amphibious freshwater forms and supra-littoral species are ranked in less terrestrially adapted categories.

The phylogenetic relationships of Brachyura and the systematics of brachyuran taxa are the topic of ongoing research (*Scholtz & Richter, 1995*; *Dixon, Ah Yong & Schram, 2003*; *Ah Yong & O’Meally, 2004*; *Ng, Guinot & Davie, 2008*; *Tsang et al., 2014*; *Brösiing, Richter & Scholtz, 2007*; *Fig. 1*) but there is increasing evidence that the conquest of land occurred several times independently amongst Brachyura as suggested by *Powers & Bliss (1983)* and *Hartnoll (1988)*. All members of the Gecarcinidae (with the exception of the genus *Epigrapsus*) and representatives of the grapsid genus *Geograpsus* have achieved complete terrestriality as adults, but larval development, which is not abbreviated, takes place in the oceans. The family Sesarmidae (*sensu Schubart, Cuesta & Felder, 2002*) includes crabs such as *Sesarma jarvisi*, *S. cookei*, and *S. verleyi*, which radiated into a broad range of terrestrial habitats, including mountainous rain forest and caves on Jamaica (*Wolcott, 1988*; *Schubart, Diesel & Hedges, 1998*; *Diesel & Schubart, 2000*; *Diesel, Schubart & Schuh, 2000*). The bromeliad crab *Metopaulias depressus* raises its offspring in water-filled leaf axils of bromeliads and certainly has evolved one of the most notable reproductive adaptations to terrestrial habitats (*Diesel & Schubart, 2000*), but remains immersed in water for extended time periods. The Ocypodidae comprise the genera *Ocypode*, *Uca*, and *Ucides*; and some of its representatives were qualified to reach terrestrial grade  $T_3$  by *Powers & Bliss (1983)*. In the phylogenetic analysis based on stomach ossicles by *Brösiing, Richter & Scholtz (2007)*, several taxa with terrestrial tendencies, the Potamonautidae, Ocypodidae, Gecarcinidae, Grapsidae, and Mictyridae cluster together with other taxa in the proposed taxon Neobrachyura, suggesting a close relationship of those brachyuran groups which include terrestrial forms, but this grouping is not recovered in the newest and most comprehensive phylogeny by *Tsang et al. (2014)*, so that it appears to be based





**Figure 1** Simplified phylogenetic relationships among Brachyura after *Tsang et al. (2014)*. For simplification some major brachyuran clades are grouped. Note that brachyuran clades including representatives showing higher degrees of terrestrial adaptation ( $T_1 > T_2$ ) are indicated by orange circles. Groups of investigated species are highlighted by indented and larger (bold) letters and are color-coded according to their lifestyles (pale blue, freshwater crabs; dark blue, marine; brown, terrestrial).

on convergences. The paraphyletic superfamily Grapsoidea (comprising 88 genera with over 480 species including the Gecarcinidae (6 genera with 19 species) include intertidal to supratidal as well as limnic forms in addition to terrestrial ones, so that there is increasing evidence that the colonization of inland habitats evolved in several lineages (*Schubart et al., 2000; Schubart et al., 2006; Tsang et al., 2014*).

An essential physiological adaptation to master a terrestrial lifestyle during and after an evolutionary transition from sea to land includes the need for sensory organs to function in air instead of in water (*Greenaway, 1999; Greenaway, 2003; Hansson et al., 2011*). Mechanosensory systems must detect stimuli that propagate in air *versus* in water, and visual systems must operate in media with different refractive properties. In olfaction, a transition from sea to land means that molecules need to be detected in or bound from gas phase instead of being transmitted directly from one water solution (e.g., sea water) into another one (receptor lymph). Marine crustaceans live in a world full of chemical information. It is well established that they use chemical cues to locate mates, signal dominance, recognize individual conspecifics, find favored food and appropriate habitats, and assess threats such as the presence of predators (reviews e.g., *Derby et al., 2001; Grasso & Basil, 2002; Derby & Sorensen, 2008; Hazlett, 2011; Thiel & Breithaupt, 2011; Wyatt, 2011; Derby & Weissburg, 2014*). However, aquatic *versus* land-living animals must detect highly different semiochemicals, because the medium places different demands on the compounds used. In water, molecules have to be more or less water-soluble and stable

enough to travel from one individual to another. On land, semiochemicals have to be light enough to form a gas in the ambient temperatures where animals live (discussed in [Stensmyr et al., 2005](#)). These molecules also have to be sufficiently chemically stable to reach the sensory receptor cells. These new selection pressures take part together in reshaping the sense of smell during the invasion of new, terrestrial habitats (reviews [Hansson et al., 2011](#); [Hay, 2011](#); [Weissburg, 2011](#)).

Malacostracan crustaceans living in aquatic habitats use several systems for detecting chemicals, and these are distributed over their entire body surface, walking appendages, and mouthparts, but are also concentrated on two pairs of antennae (reviews e.g., [Hallberg, Johansson & Elofsson, 1992](#); [Hallberg & Skog, 2011](#); [Schmidt & Mellon, 2011](#)). The first antennal pair (the antennules) is equipped with specialized olfactory sensillae (aesthetascs) in addition to bimodal chemo- and mechanosensilla (contact chemoreceptors), whereas the second pair of antennae is only equipped with the latter. The tips of the first antennae (more specifically the lateral flagella) bear a tuft region with arrays of aesthetascs that house branched dendrites of olfactory sensory neurons (reviews by [Hallberg, Johansson & Elofsson, 1992](#); [Hallberg & Hansson, 1999](#); [Mellon Jr, 2007](#); [Hallberg & Skog, 2011](#); [Schmidt & Mellon, 2011](#); [Derby & Weissburg, 2014](#)). [Schmidt & Mellon \(2011\)](#) pointed out that in aquatic crustaceans, chemical information is received and processed in two fundamentally different modes. The first mode is “olfaction” defined as chemoreception mediated by the aesthetasc pathway; the second mode is called “distributed chemoreception” defined as chemoreception mediated by contact chemoreceptors on all appendages ([Schmidt & Mellon, 2011](#)). Chemosensory neurons associated with the aesthetascs *versus* the contact chemoreceptors on the first antenna of malacostracan crustaceans innervate distinct regions in the brain. The axons of the olfactory sensory neurons associated with the aesthetascs target the deutocerebral chemosensory lobes (DCLs; also called olfactory lobes), whereas the axons associated with non-aesthetasc sensilla innervate the lateral antenna 1 neuropil (LAN; [Schachtner, Schmidt & Homberg, 2005](#); [Schmidt & Mellon, 2011](#); [Strausfeld, 2012](#); [Loesel et al., 2013](#)). As for the different functions of these two modes of aquatic chemoreception, [Schmidt & Mellon, \(2011\)](#) suggested that “the essence of olfaction” is to provide a detailed representation of the complex chemical environment integrating chemical signals from a variety of interesting sources (...) without reference to the location of stimuli (...). In contrast, the essence of “distributed chemoreception” is to form representations of only few key chemicals (food-related chemicals, pheromones) within a somatotopic context provided by mechanoreception. The integration of chemo- and mechanosensory information permits pinpointing the location of chemical stimuli ...”

Independently of insects, chelicerates, and myriapods, terrestrial Crustacea provide a fascinating chance to look on a wonderful evolutionary experiment by analyzing which potential alternative solutions arthropods have evolved to explore the terrestrial olfactory landscape ([Hansson et al., 2011](#)). We have previously analyzed the olfactory system of land hermit crabs (*Anomala*, *Coenobitidae*) including their peripheral ([Stensmyr et al., 2005](#); [Tuchina et al., 2014](#)) and central olfactory pathway ([Harzsch & Hansson, 2008](#); [Krieger et al., 2010](#); [Polanska et al., 2012](#); [Wolff et al., 2012](#); [Tuchina et al., 2015](#)), in addition to

behavioral and physiological aspects (*Stensmyr et al., 2005; Krång et al., 2012*). These studies provided evidence for coenobitids having a superb sense of aerial olfaction. In this paper, we ask whether terrestrial brachyuran crabs also evolved the neuronal basis for aerial olfaction. Therefore, we compare the anatomy of the central olfactory pathway of selected species of brachyuran crustaceans featuring a rather terrestrial lifestyle to that of their marine relatives.

## MATERIAL AND METHODS

### Experimental animals

We analyzed representatives of several different species of brachyurans representing aquatic species (four exclusively marine and one freshwater crab species) as well as four brachyuran species featuring different grades of terrestrial adaptation ([Table 1](#); [Figs. 2](#) and [3](#)). For simplification, the four latter brachyurans are referred as terrestrial brachyurans throughout this text, although all nine species feature terrestrial adaptations at various degrees ([Table 1](#)). After shipping, living specimens of *Cardisoma armatum*, *Geosesarma tiomanicum*, and *Uca tangeri* were kept in tanks providing both a water and a land part. Husbandry as well as observation and documentation of these species were conducted between 5 and 14 days until dissection in the laboratory. Before dissection, animals were sexed, and the carapace width as well as the wet weight of each animal was measured. The collection of specimens of *Gecarcoidea natalis* was permitted by Christmas Island National Park (Australian Government; Department of the Environment; Parks Australia; Permit No.: AU\_COM 2010-090-1).

### Analysis of antennae and aesthetascs

The first pairs (antennules) and the second pairs (antennae) of post-ocular appendages were cut off prior to brain dissection and were transferred into 70% ethanol (*G. natalis* and two animals of *G. tiomanicum*) or in 2% glutaraldehyde in 0.1 M phosphate buffered saline (PBS; further specimens of *G. tiomanicum*, *C. armatum* and *U. tangeri*). Micrographs of these appendages were documented in PBS with a Nikon Eclipse 90i microscope equipped with a digital camera (Nikon DS2-MBWC) and analyzed by the use of the software package NIS-Elements AR. Cuticular auto-fluorescence of the first and second antennae was excited with ultraviolet light (UV) with a wavelength of 340–380 nm eliciting light emissions with a wavelength of 435–485 nm. Aesthetascs of marine specimens such as of *Pagurus bernhardus* (Linnaeus, 1758), *Carcinus maenas*, *Xantho hydrophilus*, *X. poressa* and *Percnon gibbesi* were cut off from the lateral flagella with a razor blade and counted on an object slide using UV-excitation as well as bright field illumination.

### Histochemistry, immunohistochemistry, and microscopy

The animals were anaesthetized by cooling on ice for 1 h before dissection. Following the protocol by *Ott (2008)*, the dissected brains were fixed *in toto* for approximately 20 h (room temperature) in 3.7% formaldehyde/zinc-fixative (the ready-to-use formaldehyde/zinc-fixative was obtained *via* Electron Microscopy Sciences. Cat. No.

**Table 1** Investigated species including the sexes, numbers, grades of terrestriality ( $T_1$ – $T_5$ , where  $T_1$  is the lowest grade and  $T_5$  the highest), and origins of specimens.

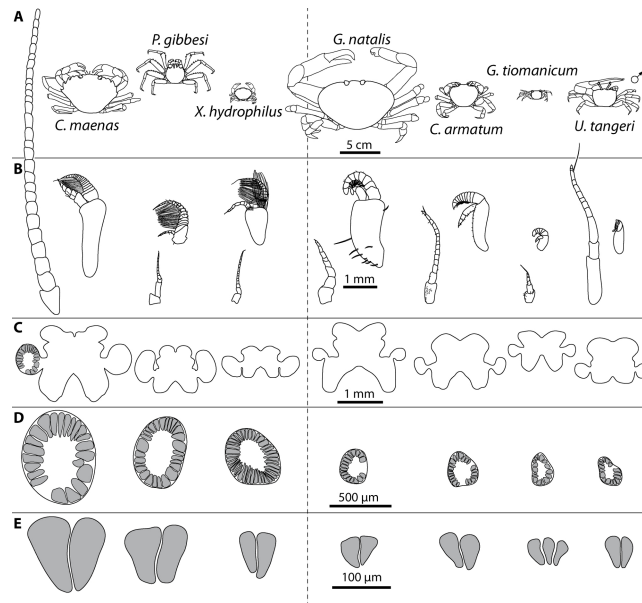
Species	Taxon	Sex (n ind.)	Grade(s) of terrestrial adaptation	Source/origin;
<i>Cardisoma armatum</i> , Herklots, 1851	Gecarcinidae	♂ (5)	$T_3$	<a href="https://www.interaquaristik.de">https://www.interaquaristik.de</a>
<i>Gecarcoidea natalis</i> , (Pocock, 1888)	Gecarcinidae	♀ (2); ♂ (2)	$T_4$	Christmas Island (Australia)
<i>Geosesarma tiomanicum</i> , Ng, 1986	Sesarmidae	♀ (2); ♂ (2)	$T_5$	<a href="https://www.interaquaristik.de">https://www.interaquaristik.de</a>
<i>Uca tangeri</i> , (Eydoux, 1935)	Ocypodidae	♀ (2); ♂ (2)	$T_2$ – $T_3$	<a href="http://www.tropicwater.eu">www.tropicwater.eu</a>
<i>Epilobocera sinuatifrons</i> , Rathbun 1866	Pseudothelphusidae	n.a. (4)	$T_2$ – $T_3$	Guajataca, Puerto Rico
<i>Carcinus maenas</i> , (Linnaeus, 1758)	Portunidae	♀ (4); ♂ (11)	$T_1$	Marine Science Center in Rostock (Germany)
<i>Percnon gibbesi</i> , (Milne-Edwards, 1853)	Percnidae	♀ (1); ♂ (1)	$T_1$	Mediterranean, Cala Llenya (Ibiza, Spain)
<i>Xantho hydrophilus</i> , (Herbst, 1790)	Xanthidae	♀ (4); ♂ (2)	$T_1$	Mediterranean, Cala Llenya (Ibiza, Spain)
<i>Xantho poessa</i> , (Olivi, 1792)	Xanthidae	♀ (2); ♂ (2)	$T_1$	Mediterranean, Cala Llenya (Ibiza, Spain)
<i>Pagurus bernhardus</i> (Linnaeus, 1758)	Paguridae	n.a. (1)	$T_1$	North Atlantic Ocean, Roscoff (France)



**Figure 2** Brachyuran species analyzed. Portraits of individuals of investigated brachyuran species in living state. (A–C) Marine Brachyura: (A) *Carcinus maenas* (Boiensdorf, Baltic Sea, 1998), (B) *Percnon gibbesi* (infralittoral rock bottom, 1 m depth, Cala Llenya, Ibiza, Spain, 2013), (C) *Xantho hydrophilus* (infralittoral rock bottom, 5 m depth, Cala Llenya, Spain, 2012). (D–H) Terrestrial Brachyura: (D) *Epilobocera sinuatifrons* (Guajataca, Puerto Rico, 2004), (E) *Gecarcoidea natalis* (At the Pink House, Christmas Island, Australia, 2011), (F) *Cardisoma armatum*, (G) *Geosesarma tiomanicum*, (H) *Uca tangeri*. Portraits of (F–H) in living state were taken in the laboratory in Greifswald in 2013.

15675). For whole-mount preparations, the brains and eyestalk ganglia were dissected, and the retina including all pigments was removed. The whole-mounts were washed three times in HEPES-buffered saline (HBS) for 15 min, subsequently transferred to Dent's fixative (80% methanol/20% DMSO), and post-fixed for two hours at room temperature. Specimens were then transferred to 100% methanol and stored overnight in the refrigerator and rehydrated stepwise for 10 min each in 90%, 70%, 50%, 30% methanol in 0.1 M Tris–HCl-buffer, and finally in pure 0.1 M Tris–HCl-buffer (pH 7.4). Alternatively, for preparing horizontal brain sections, after anaesthetizing the animals by cooling on ice for 1 h, the brains were dissected and fixed in 4% paraformaldehyde (PFA) in 0.1 M PBS overnight. The dissected brains were washed for 4 h in several changes of PBS and sectioned (80–100  $\mu\text{m}$  sections) horizontally at room temperature using a vibratome (Zeiss Hyrax V590; Carl Zeiss, Oberkochen, Germany). For permeation of cell





**Figure 3** Comparative draft of studied animals: their brains, first antennae, deutocerebral chemosensory lobes (DCLs) and olfactory glomeruli. Note that drawings are equally scaled in each line. Each column corresponds to same species as follows: *Carcinus maenas*, *Percnon gibbesi*, *Xantho hydrophilus*, as representatives for marine brachyurans are given and opposed (separated by a dashed line) to *Gecarcoidea natalis*, *Cardisoma armatum*, *Geosesarma tiomanicum*, and *Uca tangeri* representing brachyuran species featuring terrestrial lifestyles to different degrees. Note that for animals featuring a markedly size-specific sexual dimorphism, only the males are drawn. (A) Dorsal view of habitus in all studied species. (B) Distal antennomeres of the first antennae (antennules) of all species featuring the minor median and major lateral flagella which bear the aesthetascs. (C) Outlines of central brains based on the synapsin immunoreactivity. The lateral protocerebrum and nerves are not displayed. (D) Outlines of DCLs and peripheral arrangement of olfactory glomeruli as they appear in horizontal sections. Note that the position of DCL within the brain is indicated in *C. maenas* in line C. (E) Examples of shape and organization of randomly chosen olfactory glomeruli of all studied species as they appear in horizontal sections.

membranes, both brain whole-mounts as well as brain sections were then preincubated for 90 min in PBS-TX (1% Bovine-Serum-Albumine, 0.3% TritonX-100, 0.05% Na-acide, in 0.1 M PBS; pH 7.4). In contrast to the protocol of *Ott (2008)*, PBS-TX was used instead of PBSd-NGS. Finally, the samples were incubated at 4 °C for 84 h (whole-mounts) or overnight (sections) in the primary antisera. The following sets of reagents were used (compare *Krieger et al., 2012*):

**Set A:** rabbit anti-Dip-allatostatin 1 (AST-A; final dilution 1:2,000 in PBS-TX; antibody provided by H Agricola, Friedrich-Schiller Universität Jena, Germany); monoclonal mouse anti-synapsin “SYNORF1” antibody (final dilution 1:30 in PBS-TX; antibody provided by E Buchner, Universität Würzburg, Germany) detected by anti- mouse Cy3 (CyTM3-conjugated AffiniPure Goat Anti-Mouse IgG Antibody; Jackson ImmunoResearch Laboratories Inc., West Grove, PA, USA).

**Set B:** polyclonal rabbit anti-FMRFamid (in PBS-TX; final dilution 1:2,000; Acris/Immunostar; Cat. No. 20091) detected by anti-rabbit Alexa Flour 488 (IgG Antibody, invitrogen, Molecular Probes); monoclonal mouse anti-synapsin “SYNORF1” antibody (in PBS-TX; final dilution 1:30; antibody provided by E Buchner, Universität Würzburg,

Germany) detected by anti- mouse Cy3 (CyTM3-conjugated AffiniPure Goat Anti-Mouse IgG Antibody; Jackson ImmunoResearch Laboratories Inc., West Grove, PA, USA).

**Set C:** monoclonal mouse anti-synapsin “SYNORF1” antibody (in PBS-TX; final dilution 1:30; antibody provided by E Buchner, Universität Würzburg, Germany) detected by anti- mouse Alexa Flour 488 (IgG Antibody; Invitrogen, Waltham, MA, USA; Molecular Probes, Eugene, OR, USA); counterstain: phallotoxins conjugated to Alexa Fluor 546 (concentration 200 units/ml; Molecular Probes, Eugene, OR, USA) as a high-affinity probe for f-actin.

In all three sets, the tissues were incubated in mixture containing the secondary antisera and the nuclear marker HOECHST (33,242; 0.1 µg/ml) for 2.5 days at 4 °C (whole-mounts) or for 4 h at room temperature (sections). Finally, the brain sections were washed for at least 2 h in several changes of PBS at room temperature and mounted in Mowiol<sup>®</sup> (Calbiochem) between two coverslips. After secondary antibody incubation, the whole-mounts were dehydrated in changes of ascending glycerol concentrations (1%, 2%, 4% (2 h each), 8%, 15%, 30%, 50%, 60%, 70%, and 80% (1 h each) glycerol diluted in Tris–HCl buffer, with DMSO to 1% final concentration). After the last step of dehydration, the whole-mounts were washed twice for 30 min in 99.6% denatured ethanol. The ethanol was then underlyed by the same volume of methylsalicylate for clearing of the whole-mount brains. After the brains were cleared, the supernatant liquid was removed and the samples were and then mounted in customized chambers (a custom washer from the hardware store was glued between two coverslips as spacer) filled with methylsalicylate and sealed with Mowiol<sup>®</sup>. The triple-labeled and sectioned tissues were analyzed using a Nikon eclipse 90i microscope equipped with a digital camera (Nikon DS2-MBWC). The whole-mounts were analyzed by using a confocal laser scanning microscope (clsm; Leica TCS SP5II; Leica, Wetzlar, Germany). The pictures were then processed using the NIS-Elements AR software and Adobe Photoshop CS4. Only global picture enhancement features of Photoshop elements (black to white inversion, brightness, and contrast) were used for all experiments. Three-dimensional (3D) brain reconstructions in addition to volumetric analysis based on optical section series of clsm data were performed using the reconstruction software Amira<sup>®</sup> (FEI Visualization Sciences Group, Mérignac, France).

Raw data of brain section series is available from <https://www.morphdbase.de> under the “media” tab under a combination of the short title “Krieger” and an identifier according to the species and ID of the specimen.

Three-dimensional reconstructions of brains and substructures are based on tomographies of three specimens per species for *C. armatum*, *G. tiomanicum* and *U. tangeri*. For each specimen, surfaces of one DCL including the corresponding olfactory glomeruli and the ipsilateral AcN were generated by manual labeling. Finally, the computed 3D surfaces were slightly smoothed and resulting parameters such as the glomerular number and volume as well as the volume of the whole DCL were analyzed.

## Antibody specificity

### Synapsin

The monoclonal mouse anti-*Drosophila* synapsin “SYNORF1” antibody (provided by E Buchner, Universität Würzburg, Germany) was raised against a *Drosophila* GST-synapsin fusion protein and recognizes at least four synapsin isoforms (ca. 70, 74, 80, and 143 kDa) in western blots of *Drosophila* head homogenates (Klagges *et al.*, 1996). In western blot analysis of crayfish homogenates, this antibody stains a single band at ca. 75 kDa (see Sullivan *et al.*, 2007). Harzsch & Hansson (2008) conducted western blot analysis comparing brain tissue of *Drosophila* and the hermit crab *Coenobita clypeatus* which is closely related to the species studied in this contribution. The antibody provided identical results for both species, staining one strong band around 80–90 kDa and a second weaker band slightly above 148 kDa (see Harzsch & Hansson, 2008). Their analysis strongly suggests that the epitope which SYNORF 1 recognizes is strongly conserved between the fruit fly and the hermit crab. Similar to *Drosophila*, the antibody consistently labels brain structures in representatives of all major subgroups of the malacostracan crustaceans (see Beltz *et al.*, 2003; Harzsch, Anger & Dawirs, 1997; Harzsch *et al.*, 1998; Harzsch *et al.*, 1999; Harzsch & Hansson, 2008; Vilpoux, Sandeman & Harzsch, 2006; Krieger *et al.*, 2010; Krieger *et al.*, 2012) in a pattern that is consistent with the assumption that this antibody labels synaptic neuropils in Crustacea. In the crustacean first visual neuropil (the lamina), synapsin labeling is weak compared to the other brain neuropils (Harzsch, Anger & Dawirs, 1997; Harzsch & Hansson, 2008). Similarly, in *Drosophila melanogaster* labeling of the lamina is weak, because photoreceptors R1–R6 which have their synapses in the lamina contain very little of the presently known synapsin isoforms (Klagges *et al.*, 1996). The antibody also labels neuromuscular synapses both in *Drosophila* and in Crustacea (Harzsch, Anger & Dawirs, 1997). These close parallels in the labeling pattern of SYNORF1 between *Drosophila* and various Crustacea strengthen the claim that it also recognizes crustacean synapsin homologues. This antibody even labels synaptic neuropil in an ancestral clade of protostomes, the Chaetognatha (Harzsch & Müller, 2007) suggesting that the epitope recognized by this antiserum is conserved over wide evolutionary distances.

### Allatostatin A

The A-type allatostatins (A-ASTs; synonym dip-allatostatins) constitute a large family of neuropeptides that were first identified from the cockroach *Diploptera punctata* and that share the C-terminal motif-YXFGLamide (reviews Stay, Tobe & Bendena, 1995; Nässel & Homberg, 2006; Stay & Tobe, 2007). In decapod crustaceans, almost 20 native A-ASTs and related peptides were initially identified from extracts of the thoracic ganglia of the shore crab *Carcinus maenas* (Duve *et al.*, 1997), and shortly after several other A-ASTs were isolated from the freshwater crayfish *Orconectes limosus* (Dirksen *et al.*, 1999). Meanwhile, the family of crustacean A-ASTs has substantially grown to several dozens of representatives (review Christie, Stemmler & Dickinson, 2010) with additional members being discovered in the prawns *Penaeus monodon* (Duve *et al.*, 2002) and *Macrobrachium rosenbergii* (Yin *et al.*, 2006), in the brachyuran crabs *Cancer borealis* (Huybrechts *et al.*,

2003) and *Cancer productus* (Fu, Christie & Li, 2005), *Carcinus maenas* (Ma et al., 2009a), the crayfish *Procambarus clarkii* (Yasuda-Kamatani & Yasuda, 2006), the lobster *Homarus americanus* (Cape et al., 2008; Ma et al., 2008; Ma et al., 2009b) the shrimps *Litopenaeus vannamei* (Ma et al., 2010) as well as a non-malacostracan crustacean, the copepod *Calanus finmarchicus* (Christie et al., 2008).

We used an antiserum that was raised against the *Diploptera punctata* (Pacific beetle cockroach) A-type Dip-allatostatin I, APSGAQRLYGFLamide, coupled to bovine thyroglobulin using glutaraldehyde (Vitzthum, Homberg & Agricola, 1996) that was kindly provided by H Agricola (Friedrich-Schiller Universität Jena, Germany) and that previously has been used to localize A-ASTs in crustacean and insect nervous systems (e.g., Vitzthum, Homberg & Agricola, 1996; Dircksen et al., 1999; Skiebe, 1999; Utting et al., 2000; Kreissl, Strasser & Galizia, 2010). Competitive ELISA with DIP-allatostatin I, II, III, IV and B2 showed that the antiserum is two orders of magnitude more sensitive to Dip-allatostatin I than to Dip-allatostatins II, III, IV, and B2 (Vitzthum, Homberg & Agricola, 1996). Vitzthum, Homberg & Agricola (1996) have reported that the antiserum displays no cross-reactivity with corazonin, CCAP, FMRFamide, leucomyosuppression, locustatachykinin 11, perisulfakinin, and proctolin as tested by non-competitive ELISA. Preadsorption of the diluted antisera against Dip-allatostatin I, GMAP and *Manduca sexta* allatotropin with 10  $\mu$ M of their respective antigens abolished all immunostaining in brain sections of *Schistocerca gregaria* (Vitzthum, Homberg & Agricola, 1996). A sensitive competitive enzyme immunoassay (EIA) confirmed the high specificity of the antiserum for A-type Dip-allatostatin I (Dircksen et al., 1999). In the brains of the honey bee *Apis mellifera*, preadsorption controls with AST I and AST VI completely abolished all staining of the antiserum (Kreissl, Strasser & Galizia, 2010). Sombke, Harzsch & Hansson (2011) repeated a preadsorption test in *Scutigera coleoptrata* and preincubated the antiserum with 200  $\mu$ g/ml A-type allatostatin I (A9929; 16 h 4 °C; Sigma-Aldrich, St. Louis, MO, USA) and this preincubation abolished all staining. Preadsorption of the antiserum with AST-3 was reported to abolish all labeling in the stomatogastric nervous system of the crab *Cancer pagurus*, the lobster *Homarus americanus* and the crayfish *Cherax destructor* and *Procambarus clarki* (Skiebe, 1999). It seems safe to assume that this antiserum most likely binds to all A-ASTs that share a -YXFGLamide core. However, the term “allatostatin-like immunoreactivity” is used throughout this work, because it may possible that the antibody also binds related peptides.

### **RFamide-related peptides**

The tetrapeptide FMRFamide and FMRFamide-related peptides (FaRPs) are prevalent among invertebrates and vertebrates and form a large neuropeptide family with more than 50 members all of which share the RFamide motif (Price & Greenberg, 1989; Greenberg & Price, 1992; Nässel, 1993; Homberg, 1994; Dockray, 2004; Nässel & Homberg, 2006; Zajac & Mollereau, 2006). In malacostracan Crustacea, at least twelve FaRPs have been identified and sequenced from crabs, shrimps, lobsters, and crayfish (Huybrechts et al., 2003; Mercier, Friedrich & Boldt, 2003), which range from seven to twelve amino acids in length and most of them share the carboxy-terminal sequence Leu-Arg-Phe-amide. The utilized

antiserum was generated in rabbit against synthetic FMRFamide (Phe-Met-Arg-Phe-amide) conjugated to bovine thyroglobulin (DiaSorin, Cat. No. 20091, Lot No. 923602). According to the manufacturer, immunohistochemistry with this antiserum are completely eliminated by pretreatment of the diluted antibody with 100  $\mu\text{g/ml}$  of FMRFamide. [Harzsch & Hansson \(2008\)](#) repeated this experiment in the anomalan *Coenobita clypeatus* which is closely related to the species studied here, specifically to the hermit crabs, and preincubated the antiserum with 100  $\mu\text{g/ml}$  FMRFamide (16 h, 4 °C; Sigma-Aldrich, St. Louis, MO, USA) resulting in a complete abolishment of all staining. Because the crustacean FaRPs know so far all share the carboxy-terminal sequence LRFamide, we conclude that the DiaSorin antiserum that we used most likely labels any peptide terminating with the sequence RFamide. Therefore, we will refer to the labeled structures in our specimens as “RFamide-like immunoreactivity” throughout the paper.

### Nomenclature

The neuroanatomical nomenclature used in this manuscript is based on [Sandeman et al. \(1992\)](#) and [Richter et al. \(2010\)](#) with some modifications adopted from [Harzsch & Hansson \(2008\)](#) and [Loesel et al. \(2013\)](#). In favor of a consistent terminology, here we suggest avoiding the term “optic neuropils” ([Hanström, 1925](#); [Sombke & Harzsch, 2015](#)) as well as “optic lobes” ([Kenyon, 1896](#)). Even if the Greek “optikos” and the Latin term “visus” have the identical meaning, nowadays, “optic” in the field of visional anatomy and physiology refers to the physically refractive components of the eye for the reception of light. To emphasize the perceptive character of these neuropils, we suggest using the term “visual neuropils” which is consistent with, e.g., the visual cortex in mammals, formerly also termed “optic” cortex ([Spiller, 1898](#)). All post-retinal components that are related to vision, such as the “optic tract” and the “inner” as well as the “outer optic chiasm” should be consequently renamed, too. Here, we suggest to use “visual tract” (VT) and the “inner” (iCh) as well as the “outer visual chiasm” (oCh) accordingly. However, for all pre-retinal components that are related to vision, the term “optic,” as for example in the dioptric apparatus of the ommatidia, should be maintained. We also discourage the commonly used terms “eyestalk neuropils” ([Bliss & Welsh, 1952](#); [Polanska, Yasuda & Harzsch, 2007](#)), “optic ganglia” ([Medan et al., 2015](#)), or “eyestalk ganglia” ([Harzsch & Dawirs, 1996](#); [Techa & Chung, 2015](#)), usually summarizing the visual neuropils as well as the neuropils of the TM/HN-complex, because these neuropils together can be located more proximal to the central brain and not in the eyestalk in some species, and thus are part of the central brain as exemplified below. Furthermore, the neuropils of the lateral protocerebrum (visual neuropils + TM/HN-complex) do not fulfill the definition of a ganglion (see [Richter et al., 2010](#)). The traditional nomenclature of the visual neuropils lamina ganglionaris, medulla interna, and medulla externa has been modified as suggested by [Harzsch \(2002\)](#) to lamina, medulla, and lobula. Because we could not detect any border between the cell body clusters (9) and (11) of olfactory interneurons as described in [Sandeman et al. \(1992\)](#), we collectively refer to them as cluster (9/11) (see [Krieger et al. 2010](#)). The term “oesophageal connective” and the corresponding abbreviation OC (British English) are maintained here for simplicity. The olfactory neuropil (ON or OL) is now named the



deutocerebral chemosensory lobe (DCL), and the olfactory globular tract (OGT) is now named the projection neuron tract (PNT) according to [Loesel et al. \(2013\)](#). Consequently, the olfactory globular tract neuropil OGTV is now named projection neuron tract neuropil (PNTN). For simplification, the neuroanatomical descriptions are kept restricted to only one hemisphere of the brain and hold true for all specimens studied if not stated otherwise.

The data presented in this study are drawn from different sets of triple-labeling immunofluorescence experiments as laid out above. The localizations of synapsins provides a general labeling of all neuropils in the brain whereas staining of actin is better suited to label neurite bundles and fiber tracts. The two antisera against allatostatin and FMRFamide label specific neuronal subsets and were chosen for a better comparison with other studies that have used the same markers (e.g., [Harzsch & Hansson, 2008](#); [Krieger et al., 2010](#); [Krieger et al., 2012](#)). The following abbreviations (color-coded in the figures) identify the markers:

- SYN    synapsin-like immunoreactivity (magenta or black)
- RFA    RFamid-like immunoreactivity (green or black)
- PHA    actin labeling by the use of phalloidin (green or black)
- AST    allatostatin-like immunoreactivity (green or black)
- NUC    nuclear counterstain with HOECHST-dye H 33258 (cyan or black)

## RESULTS

### The antennae

In general, the first antennae in brachyuran crustaceans each consists of two branches called the median and the lateral flagellum ([Fig. 4](#)). Both flagella are composed of several units, the flagellomeres. Each flagellomere of the lateral flagellum is equipped with one row of the typical unimodal chemosensory sensilla, the aesthetascs, in both marine and terrestrial brachyurans ([Fig. 5](#)). A quantification of aesthetasc numbers is provided in [Table 2](#). The shape of the aesthetascs in marine *versus* terrestrial brachyurans displays marked differences. In the marine species, the aesthetascs are long and slender, whereas in all species featuring a rather terrestrial lifestyle, they are short and blunt ([Fig. 5](#)). The second antennae consist of one articulated branch only, composed of multiple antennomeres, and with the low-resolution light microscopic methods used here, we could not detect any striking differences in the sensillar equipment between the marine and terrestrial representatives ([Fig. 6](#)).

### The brain

#### **General arrangement of neuropils in the brachyuran brain**

The general morphology of the brachyuran brain, as in other Malacostraca, is composed of three consecutive neuromeres, the proto-, deuto-, and tritocerebrum as extensively reported in previous studies (reviewed in [Harzsch, Sandeman & Chaigneau, 2012](#); [Schmidt, in press](#)). In some anomalan species, such as *Birgus latro* or *Petrolisthes lamarckii* as well as in the axiid shrimp *Callinassa australiensis*, the bilaterally paired visual neuropils and the neuropils of the terminal medulla/hemiellipsoid body—complex (TM/HN-complex)

**Table 2** Morphometric data of structures within the peripheral olfactory pathway and of the primary olfactory centers in the brain of decapod crustaceans.

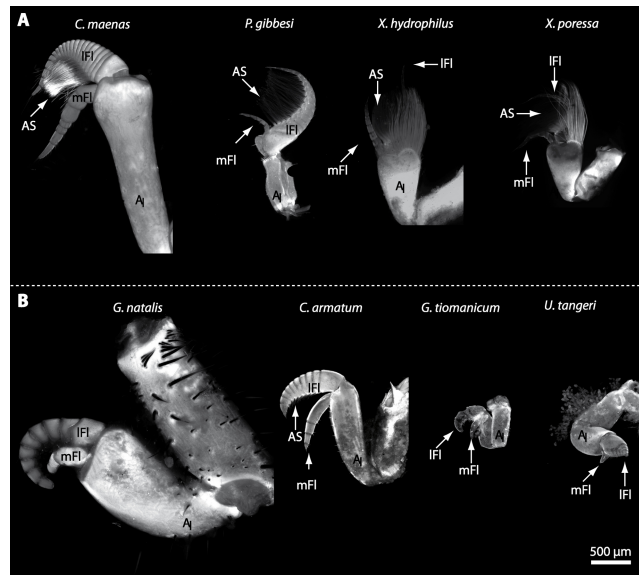
Taxon	Species	n ind.	Aesth. number	Aesth. length (μm)	DCL volume (10 <sup>3</sup> μm <sup>3</sup> )	Glom. volume (10 <sup>3</sup> μm <sup>3</sup> )	Glom. number	Reference
Achelata	<i>Panulirus interruptus</i>	2	1,786	–	344,922	288	1,202	<i>Beltz et al. (2003)</i>
	<i>Panulirus argus</i>	2	1,255	–	154,069	118	1,332	<i>Beltz et al. (2003)</i>
	<i>Panulirus argus</i>	–	–	–	–	–	≈750	<i>Blaustein et al. (1988)</i>
	<i>Panulirus argus</i>	–	–	–	–	–	≈1,100	<i>Schmidt &amp; Ache (1997)</i>
	<i>Jasus edwardsii</i>	3	1,537	–	591,956	616	961	<i>Beltz et al. (2003)</i>
Homarida	<i>Homarus americanus</i>	2	1,262	–	141,160	592	249	<i>Beltz et al. (2003)</i>
	<i>Homarus americanus</i>	–	–	–	–	–	90–200	<i>Helluy et al. (1996)</i>
Astacida	<i>Cherax destructor</i>	3	130	–	24,187	111	230	<i>Beltz et al. (2003)</i>
	<i>Cherax destructor</i>	–	–	–	–	–	≈100	<i>Sandeman &amp; Luff (1973)</i>
	<i>Cherax quadricarinatus</i>	3	237	–	24,736	74	334	<i>Beltz et al. (2003)</i>
	<i>Procambarus clarkii</i>	3	133	–	9,790	20	503	<i>Beltz et al. (2003)</i>
	<i>Procambarus clarkii</i>	–	–	–	–	–	≈150	<i>Blaustein et al. (1988)</i>
	<i>Procambarus clarkii</i>	–	–	–	–	–	20–200	<i>Mellon Jr &amp; Alones (1993)</i>
Thalassinida	<i>Callinassa australiensis</i>	3	22	–	6,589	28	235	<i>Beltz et al. (2003)</i>
Anomala	<b><i>Pagurus bernhardus</i></b>	<b>1</b>	<b>736</b>	<b>≈1,200</b>	–	170	–	<i>Krieger et al. (2012)</i>
	<i>Pagurus bernhardus</i>	–	673	–	–	–	536	<i>Tuchina et al. (2015)</i>
	<i>Coenobita clypeatus</i>	3 (*1)	519	<b>*80–100</b>	120,352	154	799	<i>Beltz et al. (2003)</i>
	<i>Birgus latro</i>	1 (*2)	1700	<b>*100–200</b>	374,682	280	1,338	<i>Krieger et al. (2010)</i>
	<i>Birgus latro</i>	1	780	–	–	–	–	<i>Harms (1932)</i>
	<i>Petrolisthes coccnicus</i>	3	328	–	12,359	19	655	<i>Beltz et al. (2003)</i>
Brachyura	<i>Cancer borealis</i>	2	540	–	165,731	230	733	<i>Beltz et al. (2003)</i>
	<b><i>Carcinus maenas</i></b>	<b>1</b>	<b>285</b>	<b>≈700</b>	–	230	–	<i>Krieger et al. (2012)</i>
	<b><i>Xantho hydrophilus</i></b>	<b>2</b>	<b>206</b>	<b>≈750</b>	–	–	–	<b>This paper</b>
	<b><i>Xantho poressa</i></b>	<b>2</b>	<b>222</b>	<b>≈ 600</b>	–	–	–	<b>This paper</b>
	<i>Libinia dubia</i>	3	319	–	20,327	39	454	<i>Beltz et al. (2003)</i>
	<i>Percnon planissimum</i>	3	555	–	28,765	59	495	<i>Beltz et al. (2003)</i>
	<b><i>Percnon gibbesi</i></b>	<b>2</b>	<b>165</b>	<b>≈ 700</b>	–	–	–	<b>This paper</b>
	<i>Paragrapsus gaimardii</i>	–	160–170	600	–	–	–	<i>Snow (1973)</i>
	<b><i>Cardisoma armatum</i></b>	<b>3 (*5)</b>	<b>*84</b>	<b>*125–150</b>	<b>12,605</b>	<b>74</b>	<b>69</b>	<b>This paper</b>

(continued on next page)

Table 2 (continued)

Taxon	Species	<i>n</i> ind.	Aesth. number	Aesth. length (μm)	DCL volume (10 <sup>3</sup> μm <sup>3</sup> )	Glom. volume (10 <sup>3</sup> μm <sup>3</sup> )	Glom. number	Reference
	<i>Sesarma</i> sp.	3	33	–	6,617	15	446	<i>Beltz et al. (2003)</i>
	<i>Gecarcoidea natalis</i>	1 (*3)	*113	*100–125	9,432	49	193	This paper
	<i>Geosesarma tiomanicum</i>	3 (*5)	*26	*60–80	4,253	21	61	This paper
	<i>Uca tangeri</i> (♀+♂)	3 (*6)	*38	*90–110	5,355	42 ± 29	64	This paper
	<i>Uca tangeri</i> (♂)	2 (*3)	*36		5,300	20 ± 6	78	This paper
	<i>Uca tangeri</i> (♀)	1 (*3)	*40		5,400	86	36	This paper
	<i>Uca minax</i>	3	39	–	4,558	18	284	<i>Beltz et al. (2003)</i>
	<i>Uca pugilator</i>	3	28	–	3,115	13	234	<i>Beltz et al. (2003)</i>
	<i>Uca pugnax</i>	3	26	–	3,012	8	374	<i>Beltz et al. (2003)</i>

Note that volumes of DCLs and olfactory glomeruli (glom.) are estimates based on a variety of different neuroanatomical methods (for further information see references). All volumes are averaged for one single structure (one DCL per hemisphere or one average glomerulus), rounded to the nearest 1,000 μm<sup>3</sup> and are thus slightly modified from the original literature. Note that for each individual investigated, the number of aesthetascs (aesth.) per antenna are based on one randomly chosen antenna per pair. The table is compiled after *Beltz et al. (2003)*, *Schachtner, Schmidt & Homberg (2005)* and *Krieger et al. (2010)* and complemented with data of other authors (see reference column) as well as with our own data (in bold) in addition of aesthetasc lengths. Note that the aesthetasc lengths in *B. latro* (upper range estimated from *Stensmyr et al. (2005)* and lower range from J Krieger, 2010, unpublished data) and *C. clypeatus* (unpublished data) are estimated based on scanning electron micrographs. Associated subsets of morphometric data apart from the main data set are indicated by asterisks.

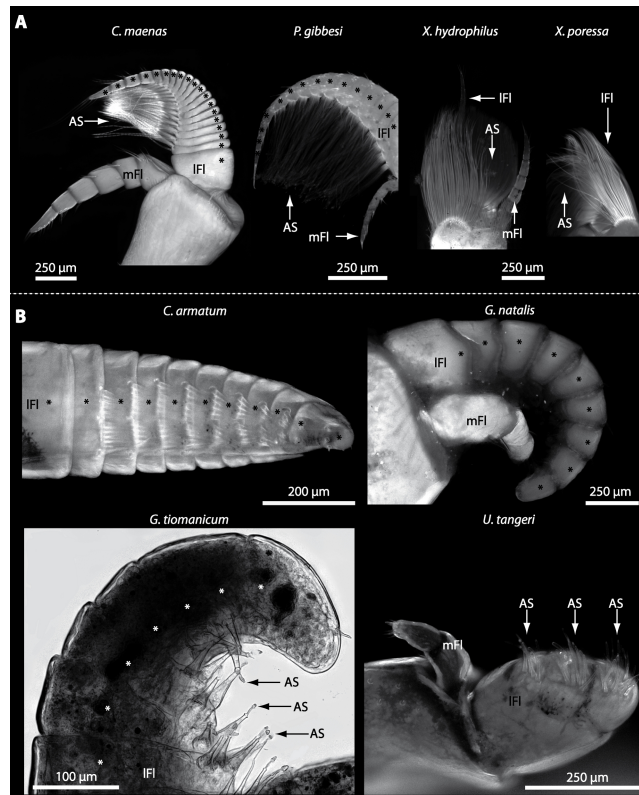


**Figure 4** First antenna in studied brachyuran species. (A) UV-autofluorescence micrograph shows equally scaled first antenna ( $A_1$ ) from four marine species *Carcinus maenas*, *Percnon gibbesi*, *Xantho hydrophilus* and *Xantho poressa*; and (B) from four terrestrial species *Gecarcoidea natalis*, *Cardisoma armatum*, *Geosesarma tiomanicum* and *Uca tangeri*. Abbreviations: AS, aesthetascs; IFI, lateral flagellum; mFI, median flagellum.

are located anteriorly adjacent to the “central” brain as a consequence of elongated axons composing the optic nerve. In all brachyurans studied so far, however, these neuropils are located within the eyestalks, thus being situated at some distance from the central portion of the syncerebrum. Note that in the comparative Fig. 3, for simplicity, only outlines of the central portions of the brains, in the following simply termed the “central brain”—are drawn, without the neuropils of the lateral protocerebrum. In horizontal sections, this central brain appears broader than elongated along the neuraxis (Fig. 3C). The species studied here displayed markedly different carapace widths ranging from 14 mm in *G. tiomanicum* up to 90 mm in *G. natalis*. In contrast, the general brain dimensions are rather similar across species as indicated by a range of brain width between 1.4 mm in *G. tiomanicum* to 2.5 mm in *G. natalis* and 2.7 mm in *C. maenas*. Hence, there seems to be only a weak correlation between brain size and body size.

Contrary to most other decapods analyzed so far (see e.g., Sandeman, Scholtz & Sandeman, 1993), a distinct compartmentalization of the brain neuropils is less obvious in brachyurans. For instance, the neuropil boundaries in true crabs are much less distinct than in Anomala (compare Krieger et al., 2012). However, the general organization of the brachyuran brain and arrangement of its subunits can be deduced from anatomical data by tracing nerves as well as interconnecting tracts between the corresponding neuropils as outlined below:

The protocerebral tract (PT) is composed of neurites originating in neuropils of the lateral protocerebrum (IPC). The PT interconnects these neuropils with the proximal part of the brain, the median protocerebrum (mPC). The median protocerebrum is composed

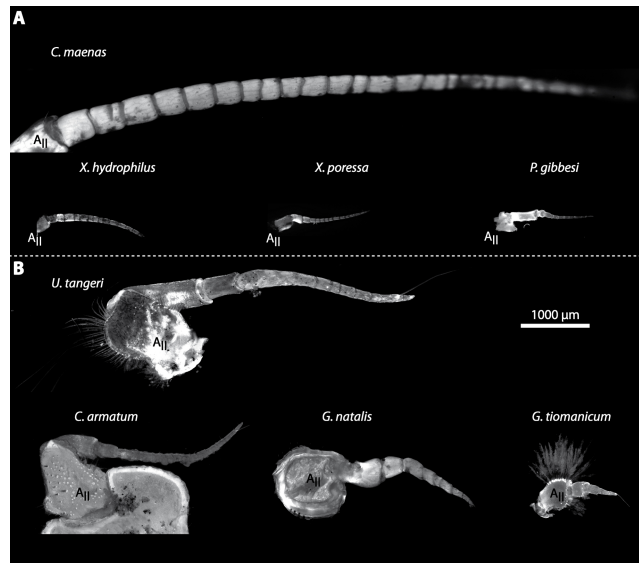


**Figure 5** Flagella and aesthetascs on first antenna in different brachyuran species. (A) UV-autofluorescence micrograph shows lateral and median flagellum as well as the aesthetascs from four marine species: *Carcinus maenas*, *Percnon gibbesi*, *Xantho hydrophilus*, and *Xantho poressa* and (B) from four terrestrial species *Cardisoma armatum*, *Gecarcoidea natalis*, *Geosesarma tiomanicum*, and *Uca tangeri*. A micrograph using transmitted light shows the lateral flagellum and aesthetascs from *Geosesarma tiomanicum*. Asterisks identify single annuli of the lateral flagellum. Abbreviations: AS, aesthetascs; IFI, lateral flagellum; mFl, median flagellum.

of the anterior (AMPN) and the posterior medial protocerebral neuropil (PMPN), which together resemble the shape of a butterfly in horizontal brain sections (compare Figs. 3, 9D, 9E, 11D, 11E, 13C–13G, 15A–15D, 16A1–16C1 and 17). Both neuropils are almost completely fused anterioposteriorly as well as across the midline with their contralateral counterparts into one single neuropil mass in the brachyuran brain, but they appear separated in horizontal sections at the level of the central body (Figs. 11E–11F, 13D, 15B and 15F). Furthermore, the median protocerebrum includes neuropils of the central complex, namely from anterior to posterior: the unpaired protocerebral bridge (PB), the unpaired central body (CB), and the bilaterally paired lateral accessory lobes (Lals).

In all brachyuran species investigated, the neuropils of the deutocerebrum (DC) that extend posteriorly adjacent to the median protocerebrum consist of the unpaired median antenna I neuropil (MAN), the bilaterally paired antenna I neuropils (LANs), the deutocerebral chemosensory lobes (DCLs; formerly referred as olfactory lobes or olfactory neuropils), the accessory lobes (AcNs) and the projection neuron tract neuropils (PNTNs; formerly referred as olfactory globular tract neuropils or OGTNs). Each DCL





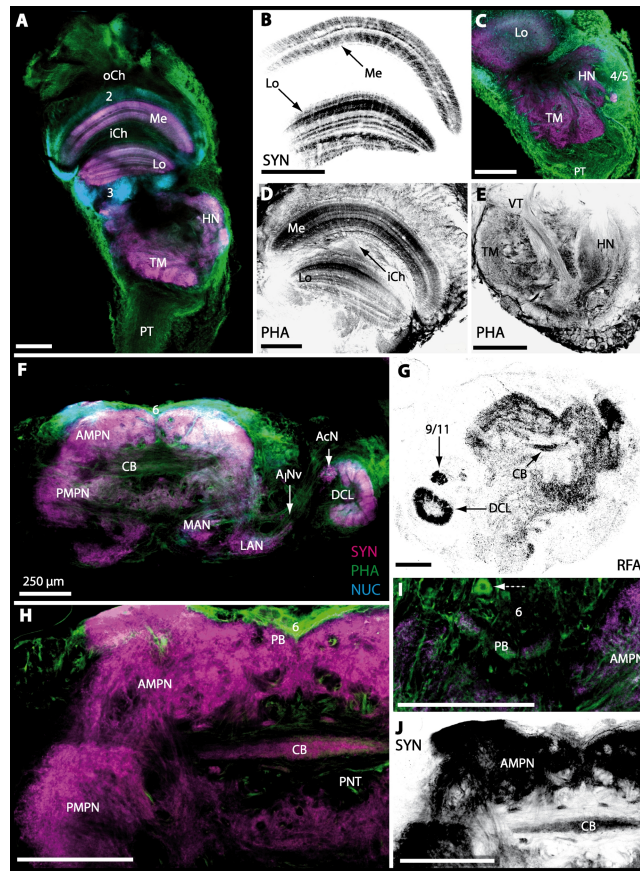
**Figure 6** Second antenna of studied brachyuran species. (A) UV-autofluorescence micrograph shows the equally scaled second antenna ( $A_{II}$ ) from four marine species *Carcinus maenas*, *Percnon gibbesi*, *Xantho hydrophilus* and *Xantho poressa* and (B) from four terrestrial species *Gecarcoidea natalis*, *Cardisoma armatum*, *Geosesarma tiomanicum* and *Uca tangeri*.

consists of several to hundreds of barrel-shaped subunits of synaptic neuropil, the olfactory glomeruli (OG) which are arranged in a radial, palisade-like array in the periphery of the lobe. Medially to each DCL, a cluster of somata (9/11) of hundreds of interneurons of varying sizes is present. These neurons extend neurites which enter the DCL *via* the median foramen (mF), one of three gaps in the palisade-like array of olfactory glomeruli. Furthermore, several hundreds of somata of olfactory projection neurons are grouped in cell cluster (10) posteriorly to each DCL. Their neurites enter each DCL *via* the posterior foramen (pF), innervate the olfactory glomeruli, and project axons that exit each lobe *via* its median foramen (mF) in a large bundle that constitutes the projection neuron tract (PNT). The axons of the PNT interconnect each DCL with the ipsilateral as well as contralateral hemiellipsoid body within the lateral protocerebrum by forming a chiasm dorsally of the central body.

The tritocerebrum (TC) posteriorly adjoins the neuropils of the deutocerebrum and is composed of the bilaterally paired antenna II neuropils (AnNs) and further dorsally, of the tegumentary neuropils (TNs).

### ***Lateral protocerebrum: the visual neuropils and the terminal medulla/hemiellipsoid body—complex (TM/HN-complex)***

The eyestalks of most malacostracan crustaceans each contain three successive retinotopic neuropils. These three main visual neuropils process visual input and from distal to proximal are termed the lamina, medulla, and lobula. An additional (fourth) neuropil can be found adjacent to the lobula referred to as lobula plate. If present, the lobula plate adheres to the lobula. The architecture of these visual neuropils which often are referred to as optic neuropils is best known in crayfish and lobsters (review [Harzsch, Sandeman & Chaigneau,](#)



**Figure 7** Optical horizontal sections of lateral protocerebrum and central brain in *Cardisoma armatum*. (A–E) Micrographs of triple-labeled optical horizontal sections showing visual neuropils and the lateral protocerebrum. Lamina was lost through dissection. (F–J) brain and details of specific brain areas such as, median protocerebrum and deutocerebrum in H and protocerebral bridge (PB) in I. The arrow with a dashed line marks a giant neuron in I. Note that (B, D, E, G and J) show inverted single-channel micrographs of different labelings (indicated by abbreviations). Abbreviations of immunohistochemical labelings and histochemical markers: NUC, nuclear marker (cyan); PHA, actin-labeling using phalloidin (green or black); RFA, labeling against RFamide (black); SYN, labeling against synapsin (magenta or black). Other abbreviations: 2, 3, 4/5, 6, and 9/11, cell clusters (2), (3), (4/5), (6), and (9/11);  $A_1Nv$ , antenna I nerve; AcN, accessory neuropil; AMPN, anterior medial protocerebral neuropil; CB, central body; DCL, deutocerebral chemosensory lobe; HN, hemiellipsoid body; iCh, inner visual chiasm; LAN, lateral antenna I neuropil; Lo, lobula; MAN, median antenna I neuropil; Me, medulla; oCh, outer visual chiasm; PMPN, posterior medial protocerebral neuropil; PNT, projection neuron tract; PT, protocerebral tract; TM, terminal medulla; VT, visual tract. Scale bars, 250  $\mu$ m.

2012) but was also analyzed in a number of marine and amphibious brachyurans including *Chasmagnathus granulatus*, *Hemigrapsus oregonensis* (Sztarker, Strausfeld & Tomsic, 2005; Sztarker et al., 2009; Berón de Astrada, Medan & Tomsic, 2011; Berón de Astrada et al., 2013), and *Carcinus maenas* (Elofsson & Hagberg, 1986; Krieger et al., 2012). Although the visual neuropils are not the focus of the present study, successful eyestalk preparations from *C. armatum* (Figs. 7A–7D), *G. natalis* (Figs. 9A–9C), *G. tiomanicum* (Figs. 11A and 11B), and *U. tangeri* (Fig. 13A) show that these terrestrial species display well developed visual neuropils that show distinct synapsin-like immunoreactivity (SYN). Distinct clusters of

somata become clearly visible distal to each visual neuropil. According to their appearance from distal to proximal and based on nuclear counterstaining, we distinguish cluster (1) associated with the lamina; cluster (2) associated with the medulla; cluster (3) associated with the lobula (Figs. 7A, 9A, 11A and 13A). Their arrangement and layered architecture closely correspond to those of their marine relatives. In the lobula, we could resolve three main layers in all four species (Figs. 7B, 9B, 11A and 13A) suggesting that at the level of resolution we analyzed, the visual neuropils show a high level of similarity.

The most proximal neuropils of the lateral protocerebrum, the terminal medulla (TM; also termed medulla terminalis) and the hemiellipsoid body (HN), which are considered multimodal associative areas (Wolff *et al.*, 2012), are located within the eyestalk and together constitute an almost spherical neuropil mass (TM/HN-complex) in the species studied. They are identifiable in preparations of *C. armatum* (Figs. 7A–7E), *G. natalis* (Figs. 9A–9C), *G. tiomanicum* (Figs. 11A–11C2), and *U. tangeri* (Figs. 13A and 13B) showing distinct SYN, but were also described in *Chasmagnatus granulatus* (Berón de Astrada & Tomsic, 2002), *Hemigrapsus oregonensis* (Sztarker, Strausfeld & Tomsic, 2005), and *C. maenas* (Krieger *et al.*, 2012). A clear distinction between these two neuropils is difficult because they are tightly adjoined. Therefore, a comparative volumetric analysis was impractical. Nevertheless, our preparations indicate that in *Uca*, the TM/HN-complex is markedly smaller in diameter compared to all other crabs being analyzed (compare Fig. 13A with Figs. 7A–7E, Figs. 9A–9C and 11A–11B). A compartmentalization of the hemiellipsoid body into one cap and 1–2 core neuropil masses is obvious in *G. natalis* (Fig. 9C) and in *G. tiomanicum* (Figs. 11B–11C2), whereas such a subdivision could not be resolved in the other crabs analyzed. According to Sandeman *et al.* (1992), each of these neuropils is associated with a cluster of neurons, namely cluster (4), which is located closely to the terminal medulla and cluster (5), which is adjacent to the hemiellipsoid body in decapods and contains hundreds of interneurons of minute diameter. However, in the brachyurans studied, a clear separation of these two clusters was impossible. Rather, the TM/HN-complex is surrounded by a confluent cortex of somata which therefore will be referred to as cluster (4/5) here (Figs. 7C, 9C, 11B and 13A–13B).

### **Median protocerebrum**

The median protocerebrum is composed of the closely fused AMPN and PMPN and appears broader than long. In all brachyuran crabs studied, it has a butterfly-shape in horizontal sections (Fig. 3C). The AMPN and the PMPN are identifiable by showing distinct SYN (Figs. 7F, 7H–7J, 9D–9E, 11D–11F, 13C–13E, 15A–15D, 16A1–16C2 and 17), weaker RFA (Figs. 11D–11F, 13D–13E, 13G, 16A1–16C2 and 17) and AST in the periphery (Figs. 9D–9E, 15A–15D and 17). Although allatostaninergic and RFamide fibers innervate the whole brain, the V-shaped protocerebral bridge (PB) and especially the cylindrical or cigar-shaped central body (CB) further posteriorly show the densest RFA as well as AST (Figs. 7F–7I, 9E, 11D–11F, 13D, 13G, 15A–15D, 16A2–16C2 and 18) besides distinct SYN (Figs. 7H–7J, 9E, 11E–11F, 13D–13E, 15A–15D, 16A2–16C2 and 17). In sections at the level of the CB, the separation of the AMPN from the PMPN becomes visible (Figs. 7H, 9E, 11F, 11G, 13D, 13F, 15B and 17). Anterior to the PB, the nuclear marker reveals hundreds

of somata of varying diameters (5–10  $\mu\text{m}$  in all species studied) that are grouped within the cell cluster (6). This cluster also comprises a subset of few somata with a markedly larger diameter that display distinct RFA (diameters approx. 30  $\mu\text{m}$  in *C. armatum*, 25  $\mu\text{m}$  in *G. tiomanicum*, and 20  $\mu\text{m}$  in *U. tangeri*) and AST (approx. 30  $\mu\text{m}$  in *E. sinuatifrons* and *G. natalis*). The neuropils of the median protocerebrum are regularly pierced by blood vessels of the circulatory system (e.g., the cerebral artery (CA); Figs. 9D–9E, 11D, 11F, 13C and 13E) and by large tracts of neurites (e.g., the projection neuron tract (PNT); Figs. 7H, 9D, 11D–11G, 13C–13E, 13G, 15B, 15D, 16A1 and 16B1–16B2) and can be inferred from the negative imprint due to the absence of immunoreactivity against the tested antisera. The projection neuron tract consists of neurites of olfactory projection neurons whose cell bodies are located in the somata clusters (10) situated posterior-lateral to each DCL. These neurites connect each DCL to the ipsilateral as well as the contralateral TM/HN-complex within the lateral protocerebrum and constitute a chiasm dorsally to the central body. The cerebral artery (CA) located between median protocerebrum (posterior to the PMPN) and deutocerebrum (anterior to the median antenna I neuropil) is identifiable by the nuclear counterstain of the perivascular cells (Figs. 9D–9E, 11F, 13F and 15A–15B) in horizontal sections. The dorsoventral course of the CA through the central brain could be confirmed in all crabs as it has been shown for *C. maenas* (Sandeman, 1967) but not its ramifications.

### ***Deutocerebrum with special focus on structures of the primary olfactory pathway***

Directly posterior-ventral to the PMPN and the CA, the unpaired median antenna I neuropil (MAN; Figs. 7F–7H, 9D–9E, 11D–11G, 13C–13G and 15B) is present in all brachyuran crabs studied displaying distinct SYN as well as AST and RFA. The border between PMPN and MAN is rather confluent but is identifiable due to the clear position of the CA (compare Figs. 9D and 9E).

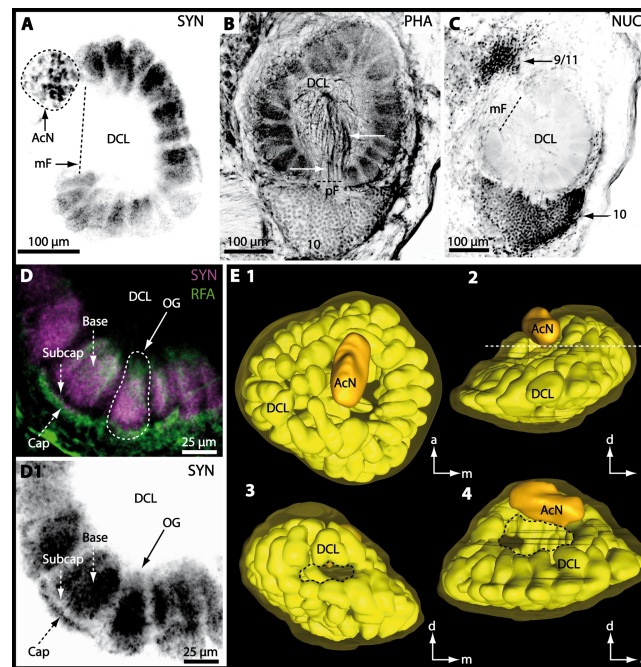
Besides the deutocerebral chemosensory lobe (DCL) and the accessory lobe (AcN), other neuropils of the lateral deutocerebrum can be found within the confluent mass of the central brain composed of parts of the proto-, deuto- as well as the tritocerebrum (compare Fig. 17) such as the lateral antenna I neuropil (LAN; Figs. 7F, 9D, 11D, 13D–13E and 15B) and in a few preparations, the projection neuron tract neuropil (PNTN; Figs. 15B and 16A1). However, a complete, in-depth reconstruction of their definite outlines remains challenging. In all species investigated, the AcN and, in particular the DCL are the most delimited structures within the otherwise confluent brachyuran brain. The DCL is composed of several dozens (60–80 in *G. sesarma*, *U. tangeri* and *C. armatum* up to almost 200 in *G. natalis*—see Table 2 for further information) of barrel-like to conical cartridges, termed olfactory glomeruli (OG), of varying sizes (see Fig. 18). From a limited number of investigated specimens of *U. tangeri*, it appeared that in two males analyzed the number of olfactory glomeruli exceeded that of one female by a factor of ca. 2 (36 OG in ♀ versus 76–80 OG in ♂), whereas the males featured approximately a third of the average female glomerular volume (see Table 2) resulting in an almost equal volume of the entire DCL in both sexes. In all marine brachyuran species studied, the numbers as well as the average volumes of olfactory glomeruli markedly exceed those of the co-studied terrestrial

brachyurans (Table 2 and Fig. 18), though the general brain dimensions are somewhat similar (see Figs. 3 and 17). In brain sections of aquatic representatives of Brachyura (in the four exclusively marine; and to some degree, in the freshwater species *E. sinuatifrons*), the olfactory glomeruli are larger and more elongated compared to those of the terrestrial species studied here. A clear regionalization of each olfactory glomerulus into a cap, a subcap, and a base region (from the periphery of the DCL to its center) appears more pronounced in aquatic brachyurans than in the terrestrial species (Fig. 18). The cap and base regions show stronger SYN (Figs. 8A, 8D1, 14E, 15E, 16A1, 16B1, 17 and 18) than the subcap region in these species. In a subset of experiments, the subcap region shows distinct RFA, but RFA is weaker in the base region and is absent in the cap region (i.e., in *P. gibbesi*, *X. hydrophilus*, *X. poressa*, *U. tangeri*; Figs. 18A and 18B), whereas the subcap region shows the most distinct AST and becomes absent towards the base region in each OG (in *E. sinuatifrons*, Figs. 18A and 18B; *G. natalis*, not shown; and in *C. maenas*, see Krieger et al., 2012). Anteromedial to the median foramen of each DCL, the accessory lobe (AcN) becomes visible, consisting of dozens of microglomeruli that show distinct SYN but widely lack RFA as well as AST. The diameter of the almost spherical AcN ranges from 50  $\mu\text{m}$  (in *U. tangeri*, *X. hydrophilus*, *X. poressa*, and *P. gibbesi*; Figs. 14A, 14D–14E and 16A3–16C3) up to 100  $\mu\text{m}$  (75  $\mu\text{m}$  in *C. armatum*, 100  $\mu\text{m}$  in *G. natalis* as well as *G. tiomanicum*; Figs. 7F, 8A, 8E, 9D, 10C, 12A, 12D and 12F). Further medial and between the PMPN and the AcN, a somata cluster of hundreds of interneurons (ca. 5–8  $\mu\text{m}$  in diameter) appears. This cell cluster (9/11) is clearly revealed by the nuclear counterstaining (Figs. 8C, 9E, 10A, 10E and 15B) and contains subpopulations of several to dozens of allatostatinergeric (Figs. 9E and 15B) and RF-amidergic interneurons (Figs. 7G, 12A–12C, 13D–13E, 16A1, 16A3 and 16B1) that are markedly larger in diameter (from 12  $\mu\text{m}$  in *U. tangeri*; and 16  $\mu\text{m}$  in *X. hydrophilus*; up to 30  $\mu\text{m}$  in *G. tiomanicum*; i.e., see Fig. 12C). Neurites of cell cluster (9/11) enter each DCL via the median foramen (mF; Figs. 7F, 8C, 10B, 12B, 14A–14C, 15B, 16A1, 16B1 and 17). Lateroposterior to each DCL, a group of hundreds to thousands of olfactory projection neurons house their somata within cell cluster (10). These neurites of projection neurons enter the DCL via the posterior foramen (pF; Figs. 8B–8C, 9D, 10D, 12C, 14B–14C and 15B), connect with the olfactory glomeruli, exit the DCL via the median foramen (Figs. 8C, 12B, 14C, 15B, 16A1, 16B1 and 17), and finally project to the ipsilateral as well as the contralateral TM/HN-complex by forming a chiasm at the dorsal level of the central body (not shown). The entirety of neurites of projection neurons constitute the projection neuron tract (PNT) whose somata are housed within cell cluster (10). According to its position, the projection neuron tract neuropil (PNTN) becomes visible medial to the mF in a few preparations showing distinct SYN (Figs. 15B, 16A1 and 17).

### **Tritocerebrum**

The tritocerebral antenna II neuropil (AnN) and further dorsally the tegumentary neuropil (TN) compose the posteriormost parts of the central brain, being located anterolaterally to the esophagus. An identification of the neuropil borders is difficult due to their confluent connection to the deutocerebrum. The AnN that receives chemosensory as well as mechanosensory input from the second antenna is identifiable in a few preparations





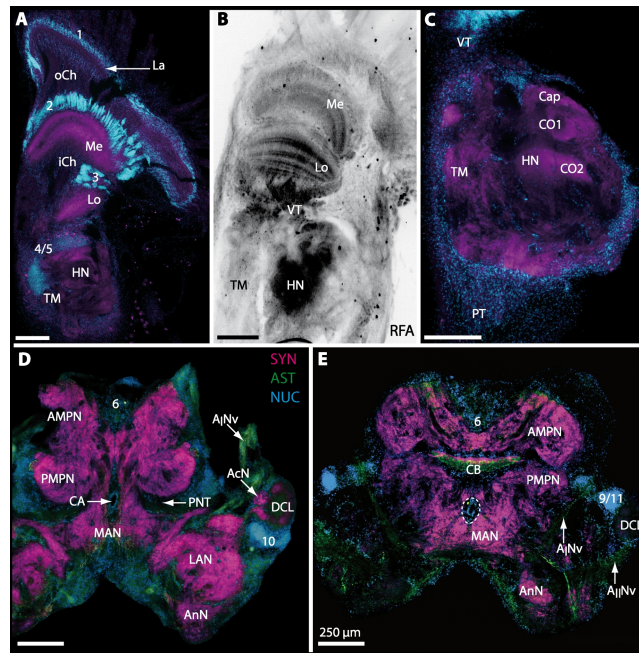
**Figure 8** Optical horizontal sections and 3D-reconstruction of deutocerebral chemosensory lobe (DCL) in *Cardisoma armatum*. (A–C) Inverted single-channel micrographs of DCL. White arrows in B mark axons of projection neurons. (D) and (D1): Detailed picture of the olfactory glomeruli (OG) with double-labeling in D and inverted single-channel picture in D1. (E) 3D-reconstruction of DCL, olfactory glomeruli and accessory neuropil (AcN) shown in four different orientations. 1: from dorsal. 2: from anterior. Dashed line represents the horizon of section given in A. 3: from posterior. Dashed line indicates the posterior foramen (pF). 4: centro-lateral view. Dashed line indicates the median foramen (mF). Abbreviations of immunohistochemical labelings and histochemical marker: NUC, nuclear marker (black); PHA, actin-labeling using phalloidin (black); RFA, labeling against RFamide (green); SYN, labeling against synapsin (magenta or black). Other abbreviation: 10 and 9/11, cell clusters (10) and (9/11); a, anterior; Base, base domain of OG; Cap, cap domain of OG; d, dorsal; l, lateral; m, median; Subcap, subcap domain of OG.

by tracing back the course of the antenna II nerve ( $A_{II}Nv$ ; Figs. 9D and 9E). Since we were unable to trace back the course of the presumably thin tegumentary nerve (TNv), the precise position and shape of the tegumentary neuropil remains uncertain.

## DISCUSSION

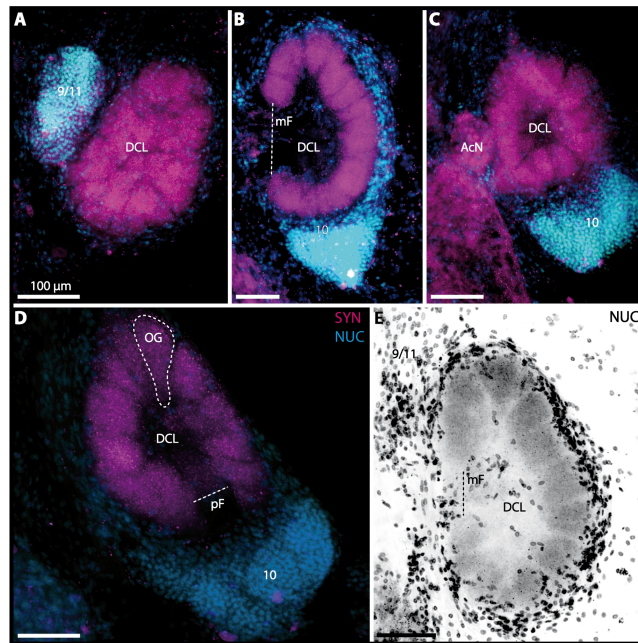
In this study, we compare the neuroanatomy of the brain in four brachyurans that display different levels of terrestrial adaptations using the antisera against presynaptic proteins, the neuropeptides FMRFamide, and allatostatin as well as markers for actin and DNA. In the following, we will compare and discuss the results of these four brachyuran species with each other as well as with one freshwater and four marine brachyurans. Special attention is given to the primary olfactory system and related structures to highlight differences between terrestrial brachyurans and their aquatic relatives.

In contrast to other reptant Malacostraca such as *Anomala*, which display a clear separation of their deutocerebral neuropils (e.g., Harzsch & Hansson, 2008; Krieger et al., 2010; Krieger et al., 2012), these neuropils are widely confluent and therefore often become



**Figure 9** Micrographs of triple-labeled vibratome sections of central brain and lateral protocerebrum in *Gecarcoidea natalis*. (A–C) Visual neuropils and lateral protocerebrum. Note that in A and C, two out of three channels are shown while B shows an inverted single-channel micrograph. (D and E) show two triple-labeled horizontal vibratome sections of central brain (D) and further ventral of central brain (E). Dashed line in E indicates the cerebral artery. Abbreviations of immunohistochemical labelings and histochemical marker: AST, labeling against allatostatin (green); NUC, nuclear marker (cyan); RFA, labeling against RFamide (black); SYN, labeling against synapsin (magenta). Other abbreviations: 1, 2, 3, 4/5, 6, 9/11, and 10, cell clusters (1), (2), (3), (4/5), (6), (9/11), and (10); A<sub>I</sub>Nv, antenna I nerve; A<sub>II</sub>Nv, antenna II nerve; AcN, accessory neuropil; AMPN, anterior medial protocerebral neuropil; AnN, antenna II neuropil; CA, cerebral artery; CB, central body; DCL, deutocerebral chemosensory lobe; iCh, inner visual chiasm; HN, hemiellipsoid body; La, lamina; LAN, lateral antenna I neuropil; Lo, lobula; MAN, median antenna I neuropil; Me, medulla; oCh, outer visual chiasm; PMPN, posterior medial protocerebral neuropil; PNT, projection neuron tract; PT, protocerebral tract; TM, terminal medulla; VT, visual tract. Scale bars = 250 μm.

indistinguishable in brachyurans. *Sandeman, Scholtz & Sandeman (1993)* and *Krieger et al. (2012)* discussed the possible connection between brain “condensation”, the fusion of synaptic neuropils, and evolutionary success in these groups. The condensation of nervous tissue may have coincided with a process that is sometimes called “carcinisation” (*Borradaile, 1916*), or “brachyurisation” (*Števcíć, 1971*). These synonyms circumscribe a hypothesis of how the condensed crab shape may have developed (*McLaughlin & Lemaitre, 1997*), both concerning the overall brachyuran habitus as well as internal consolidation of organs like the fusion of the first three ganglia of the ventral nerve cord into one joint complex (*Števcíć, 1971*). According to *Števcíć (1971)*, it was also assumed that this process mainly leads to a more complex behavior and better coordination in semiterrestrial and terrestrial crabs, since neuropil condensation and shortening of connections within the central nervous system may improve the performance of the system, e.g., in terms of



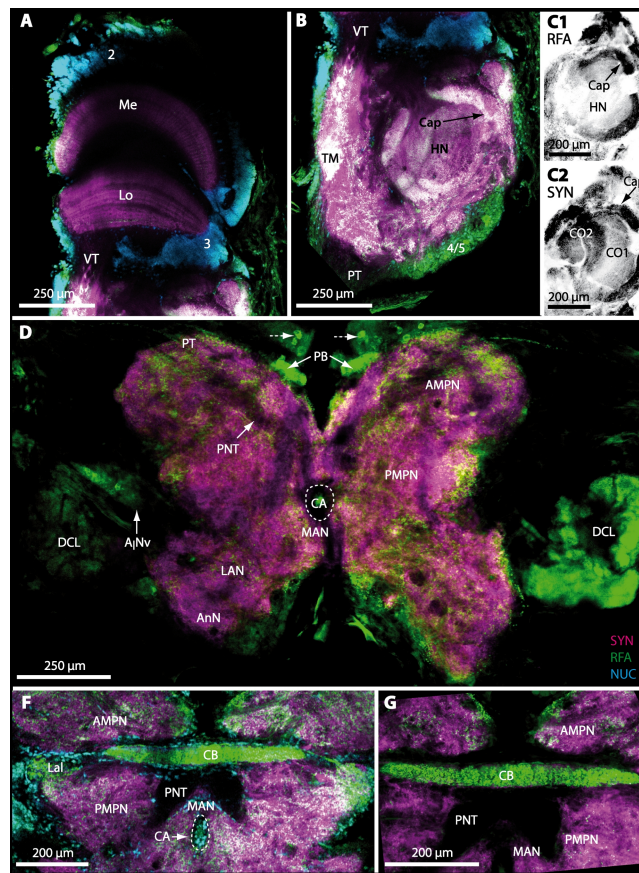
**Figure 10** Vibratome of double-labeled horizontal sections the deutocerebral chemosensory lobe (DCL) in *Gecarcoidea natalis*. (A–D) DCL featuring olfactory glomeruli (OG). Note that only an inverted single-channel micrograph is given in (E) showing nuclear staining in the periphery of DCL. Abbreviations of immunohistochemical labeling and histochemical staining: NUC, nuclear marker (cyan or black); SYN, labeling against synapsin (magenta). Other abbreviations: 10 and 9/11, cell clusters (10) and (9/11); AcN, accessory neuropil; mF, median foramen; OG, olfactory glomerulus; pF, posterior foramen. Scale bars = 100 μm.

processing speed. The fusion is most conspicuous in the posterior part of the brain, where the neuropils of the deutocerebrum adjoin those of the tritocerebrum.

### Visual ecology and the protocerebrum

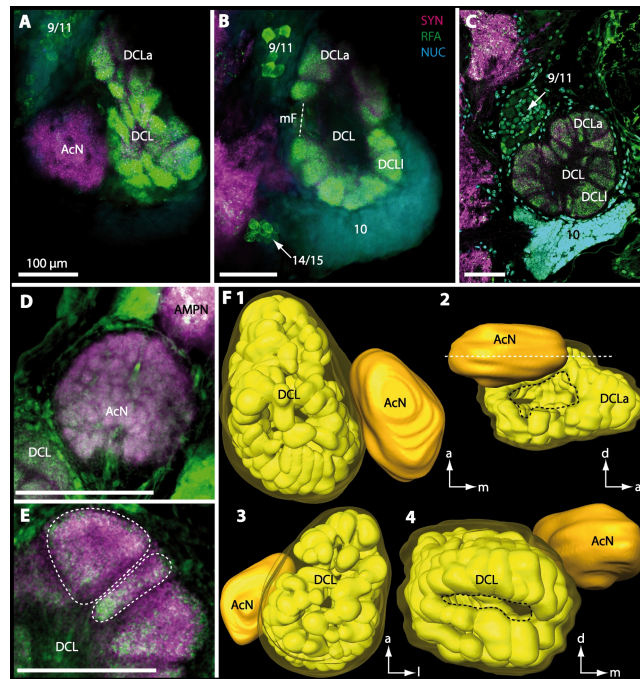
Terrestrial brachyurans have been prime examples to study visual ecology in crustaceans (reviews by [Zeil & Hemmi, 2006](#); [Zeil & Hemmi, 2014](#); [Hemmi & Tomsic, 2012](#)). Visual orientation has been very well studied in members of the genus *Uca* but poorly in any of the other ocypodid species ([Zeil & Hemmi, 2014](#) and references therein). Field experiments for individuals of *U. tangeri* have shown that they can recognize predators at greater distance, triggering an escape behavior. In addition, the animals react to their own mirror image and can visually distinguish the gender of their conspecifics ([Altevogt, 1957](#); [Altevogt, 1959](#); [Von Hagen, 1962](#); [Korte, 1965](#); [Land & Layne, 1995](#); [Zeil & Al-Mutairi, 1996](#)). Representatives of the genus *Uca* can also distinguish colors ([Korte, 1965](#); [Hyatt, 1975](#); [Detto, 2007](#)), which is an important factor for social interactions ([Detto et al., 2006](#); [Detto, 2007](#)). Ultraviolet light, for example, is reflected by the claw of *Uca*-males which attracts females ([Detto & Backwell, 2009](#)). Aspects of homing and path integration were also thoroughly analyzed in members of the genus *Uca* (e.g., [Hemmi & Zeil, 2003](#); [Layne, Barnes & Duncan, 2003a](#); [Layne, Barnes & Duncan, 2003b](#); [Walls & Layne, 2009](#)). Clearly, vision plays an essential role in the ecology of *Uca*.





**Figure 11** Triple-labeled micrographs of optical horizontal sections showing the central brain, lateral protocerebrum, and specific brain areas in *Geosesarma tiomanicum*. (A–C) Micrographs of optical sections of visual neuropils (A) and the TM/HN-complex (B, C1 and C2). Note that in C1 and C2, inverted single-channel micrographs are shown. (D–E) Brain (D) and central body and adjacent protocerebral and deutocerebral neuropils are given in (E) and (F) in higher detail. Arrows with dashed lines in D mark giant neurons featuring distinct RFA-like immunoreactivity. Abbreviations of immunohistochemical labelings and histochemical markers: NUC, nuclear marker (cyan); PHA, actin-marker using phalloidin (green); RFA, labeling against RFamide (green or black); SYN, labeling against synapsin (magenta or black). Other abbreviations: 2, 3, and 4/5, cell clusters (2), (3), and (4/5); A<sub>1</sub>Nv, antenna I nerve; AMPN, anterior medial protocerebral neuropil; AnN, antenna II neuropil; CA, cerebral artery; Cap, cap neuropil; CB, central body; DCL, deutocerebral chemosensory lobe; HN, hemiellipsoid body; Lal, lateral accessory lobe; LAN, lateral antenna I neuropil; Lo, lobula; MAN, median antenna I neuropil; Me, medulla; PB, protocerebral bridge; PMPN, posterior medial protocerebral neuropil; PNT, projection neuron tract; PT, protocerebral tract; TM, terminal medulla; VT, visual tract.

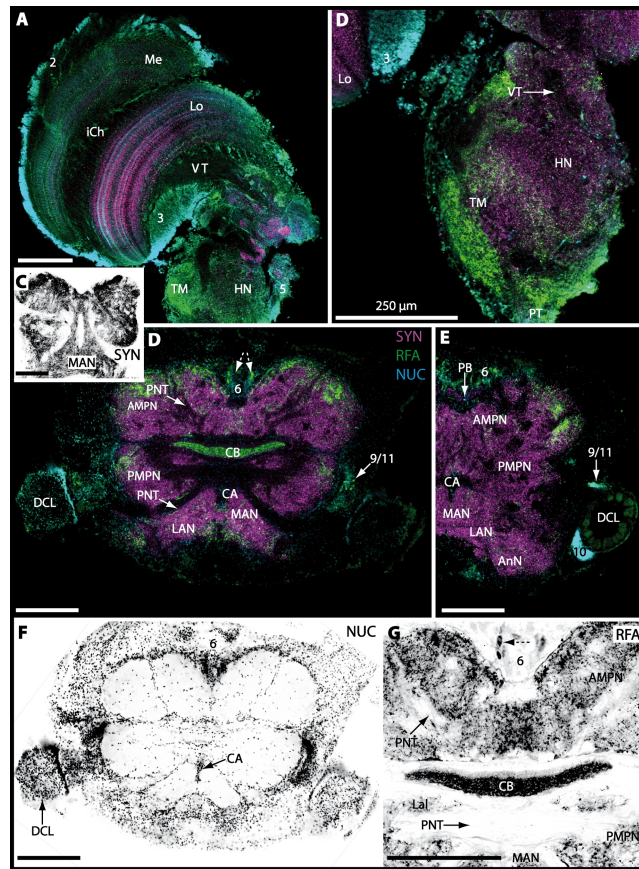
In all species examined here, the neuropils of the lateral protocerebrum are located within the eyestalks in some distance to the central brain (compare [Sandeman et al., 1992](#); [Sandeman, Scholtz & Sandeman, 1993](#)). In this study, the three visual neuropils (lamina, medulla, and lobula) could be identified in all individuals of the different species, and their location and anatomy matches that of other described brachyuran species ([Tsvileneva, Titova & Kvashina, 1985](#); [Sandeman et al., 1992](#); [Sandeman, Scholtz & Sandeman, 1993](#); [Sztarker, Strausfeld & Tomsic, 2005](#); [Sztarker et al., 2009](#); [Krieger et al., 2012](#); [Berón de Astrada et al., 2013](#)). However, the small lobula plate, the fourth visual neuropil, could



**Figure 12** Optical horizontal sections and 3D-reconstruction of deutocerebral chemosensory lobe (DCL) in *Geosesarma tiomanicum*. (A–E) Triple labeled optical sections of DCL and adjacent neuropils and cell clusters. Deutocerebral accessory lobe (AcN) is shown in D. Olfactory glomeruli (OG) are indicated by white dashed lines in E in higher detail. (F) 3D-reconstruction of DCL, olfactory glomeruli, and accessory neuropil in four different orientations—1: from dorsal. 2: centro-lateral view. White dashed line indicates orientation of section given in A. Black dashed line indicates median foramen (mF). 3: from ventral. 4: from posterior. Dashed line highlights posterior foramen (pF). Abbreviations of the immunohistochemical labelings and histochemical marker: NUC, nuclear marker (cyan); RFA, labeling against RFamide (green); SYN, labeling against synapsin (magenta). Other abbreviations: 10, 9/11, and 14/15, cell cluster (10), (9/11), and (14/15); a, anterior; AMPN, anterior medial protocerebral neuropil; d, dorsal; DCLa, anterior sublobe of the DCL; DCLl, lateral sublobe of the DCL; l, lateral; m, median. Scale bars = 100  $\mu$ m.

not be found in any of the analyzed species, most likely because of technical difficulties but was previously identified in other brachyuran species such as *Chasmagnathus granulatus*, *Hemigrapsus oregonensis* (Sztarker, Strausfeld & Tomsic, 2005; Sztarker et al., 2009) and *C. maenas* (Krieger et al., 2012). The terminal medulla (or medulla terminalis) and the hemiellipsoid body are considered to function as secondary higher-order neuropils (Wolff et al., 2012; Wolff & Strausfeld, 2015). They integrate different modalities such as visual and olfactory information that were already preprocessed in the primary sensory brain centers (visual neuropils and deutocerebral chemosensory lobes; reviewed in Schmidt, in press). Furthermore, the TM/HN-complex receives input from the ventral nerve cord (VNC) and other regions of the central brain. The terminal medulla and especially the hemiellipsoid body are also referred to as centers of learning and memory that functionally correspond to the mushroom bodies in hexapods. For the brachyurans studied here, there were only few species-specific differences visible in our preparations. We conclude that all terrestrial brachyurans examined here have well developed visual neuropils. Thus, they possess a



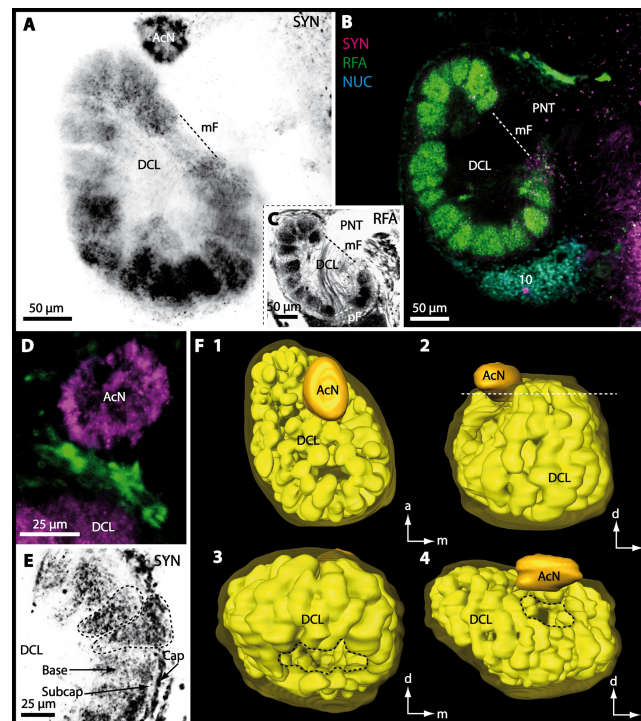


**Figure 13** Triple-labeled optical horizontal sections of central brain, lateral protocerebrum, and specific brain areas in *Uca tangeri*. (A and B) Vertical section showing the visual neuropils (A) and the TM/HN-complex (B). (C–G) show vertical sections of the brain and specific brain areas. Note that in C, F, and G, inverted single-channel micrographs are displayed. Arrows with dashed lines in D and G mark large neurons in cell cluster (6) featuring distinct RFA-like immunoreactivity. Abbreviations of immunohistochemical labelings and histochemical markers: NUC, nuclear marker (cyan or black); RFA, labeling against RFamide (green or black); SYN, labeling against synapsin (magenta or black). Other abbreviations: 2, 3, 5, 6, 10, and 9/11, cell clusters (2), (3), (5), (10), and (9/11); AMPN, anterior medial protocerebral neuropil; AnN, antenna II neuropil; CA, cerebral artery; CB, central body; DCL, deutocerebral chemosensory lobe; HN, hemiellipsoid body; iCh, inner visual chiasm; Lal, lateral accessory neuropil; LAN, lateral antenna I neuropil; Lo, lobula; MAN, median antenna I neuropil; Me, medulla; PB, protocerebral bridge; PMPN, posterior medial protocerebral neuropil; PNT, projection neuron tract; PT, protocerebral tract; TM, terminal medulla; VT, visual tract. Scale bars, 250  $\mu\text{m}$ .

neuronal substrate for a sophisticated analysis of the compound eye input. Therefore, as in their marine counterparts, visual cues most likely play important roles in the terrestrial brachyurans' behaviors such as food search, mating, and orientation.

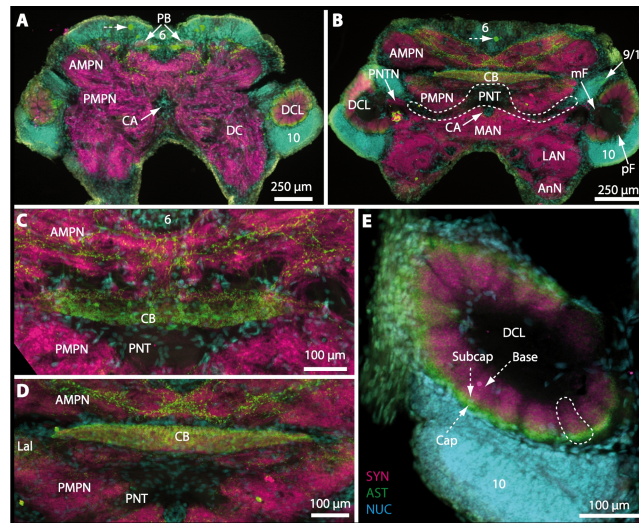
### Chemical senses: the peripheral olfactory pathway

It is well established that marine crustaceans use chemical cues to locate mates, signal dominance, recognize individual conspecifics, find favored foods and appropriate habitats, and assess threats such as the presence of predators (reviews e.g., [Derby et al., 2001](#); [Grasso & Basil, 2002](#); [Derby & Sorensen, 2008](#); [Thiel & Breithaupt, 2011](#); [Wyatt, 2011](#); [Derby](#)



**Figure 14** Optical horizontal sections and 3D-reconstruction of deutocerebral chemosensory lobe (DCL) in *Uca tangeri*. (A, C and E) Inverted single-channel micrographs of DCL. Dashed lines in E indicate two olfactory glomeruli (OG). (B and D) Triple-labeled optical sections of DCL in B and accessory lobe (AcN) in D. (F) 3D-reconstruction of DCL, its OG and AcN in four different perspectives. 1: from dorsal. 2: from anterior. Dashed line represents horizon of section represented in A. 3: from posterior. Dashed line outlines posterior foramen (pF). 4: centro-median view. Dashed line highlights median foramen (mF). Abbreviations of immunohistochemical labelings and histochemical markers: NUC, nuclear marker (cyan); RFA, labeling against RFamide (green or black); SYN, labeling against synapsin (magenta or black). Abbreviation: 10, cell cluster (10); a, anterior; d, dorsal; l, lateral; m, median; mF, median foramen; PNT, projection neuron tract.

& Weissburg, 2014). Malacostracan crustaceans that live in aquatic habitats use several systems for detecting chemicals, and these are distributed over their body surface, walking appendages, and mouthparts. We will focus our discussion on those sensilla concentrated on the two pairs of antennae (reviews e.g., Hallberg, Johansson & Elofsson, 1992; Hallberg & Skog, 2011; Schmidt & Mellon, 2011). The first antennal pair (the antennules) is equipped with specialized olfactory sensilla (aesthetascs) in addition to bimodal chemo- and mechanosensilla, functioning as contact-chemoreceptors, whereas the second pair of antennae is only equipped with the latter. The tips of the first antennae (more specifically the lateral flagellum) bear a tuft region with arrays of aesthetascs that house branched dendrites of olfactory sensory neurons (reviews by Hallberg, Johansson & Elofsson, 1992; Hallberg & Hansson, 1999; Mellon Jr, 2007; Hallberg & Skog, 2011; Schmidt & Mellon, 2011; Derby & Weissburg, 2014). There are multiple studies on the ultrastructure of these aesthetascs (e.g., Ghiradella, Case & Cronshaw, 1968a; Ghiradella, Case & Cronshaw, 1968b; Snow, 1973; Wasserthal & Seibt, 1976; Tierney, Thompson & Dunham, 1986; Spencer & Linberg,

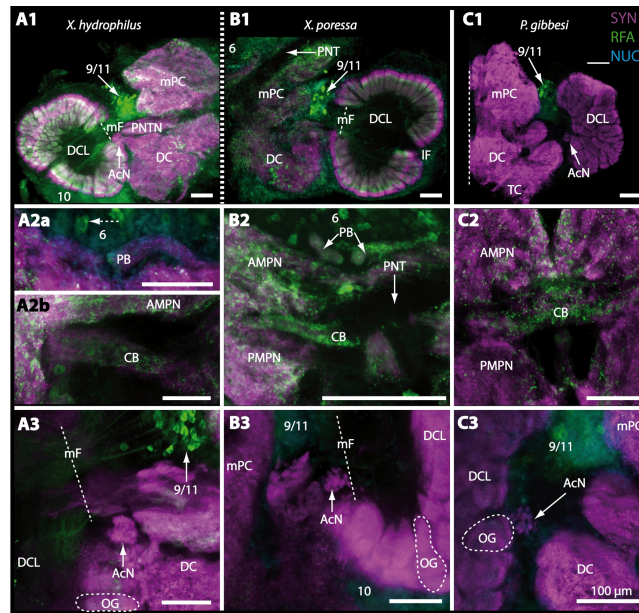


**Figure 15** Vibratome of triple-labeled horizontal vibratome sections of central brain and specific brain areas in *Epilobocera sinuatifrons*. (A and B) Two brain sections (100  $\mu\text{m}$ ) from dorsal (A) to ventral (B) are shown. Arrows with dashed lines in A and B point at specific neurons within cell cluster (6) featuring distinct AST-like immunoreactivity. Dashed line highlights the position of the projection neuron tract (PNT). (C and D) show neuropils of the central complex from dorsal (C) to ventral (D) in more detail. Higher detailed insight from deutocerebral chemosensory lobe (DCL) is given in (E). Dashed line outlines a single olfactory glomerulus (OG). Abbreviations of immunohistochemical labelings and histochemical markers: AST, labeling against allatostatin (green); NUC, nuclear marker (cyan); SYN, labeling against synapsin (magenta). Other abbreviations: 6, 10, and 9/11, cell clusters (6), (10), and (9/11); AMPN, anterior medial protocerebral neuropil; AnN, antenna II neuropil; Base, base domain of OG; CB, central body; Cap, cap domain of OG; DC, deutocerebrum; Lal, lateral accessory neuropil; LAN, lateral antenna I neuropil; MAN, median antenna I neuropil; mF, median foramen; PB, protocerebral bridge; pF, posterior foramen; PMPN, posterior medial protocerebral neuropil; PNTN, projection neuron tract neuropil; Subcap, subcap domain of OG.

1986; Grünert & Ache, 1988; Gleeson, McDowell & Aldrich, 1996), but unfortunately none of these studies includes any of the species analyzed in the present work.

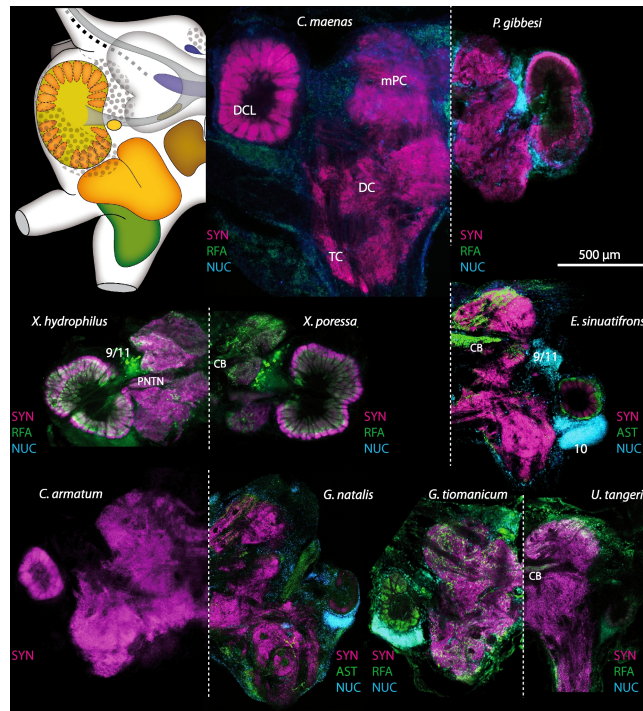
We observed that all four terrestrial brachyurans studied here have shorter antennae in relation to their body sizes, and feature markedly fewer and shorter aesthetascs compared to their marine relatives (Table 2; Figs. 3A, 3B and 4–5). These findings suggest that possessing short and hidden first antennae equipped with few, short, and blunt aesthetascs seems to be a shared feature and most likely a specific adaptation in all terrestrial brachyurans. We suggest that this feature may be an adaptation to minimize water loss across the cuticle. Furthermore, a typical marine (brachyuran) array of long and slender aesthetascs will likely collapse out of water and most likely will be non-functional on land. Studies on other terrestrial crustacean taxa such as representatives of the Isopoda and Anomala support the idea that all terrestrial crustaceans share a size reduction of antennal sensilla including the aesthetascs (compare Hansson *et al.*, 2011). The aesthetascs of terrestrial hermit crabs of the taxon Coenobitidae, for example, display striking differences to those of marine hermit crabs in that they appear short and blunt (compare Ghiradella, Case & Cronshaw, 1968a; Stensmyr *et al.*, 2005). In robber crabs, *Birgus latro*, the largest known land arthropods, they are confined to the ventral side of the primary flagella and are





**Figure 16** Vibratomy of triple-labeled horizontal sections ( $100\ \mu\text{m}$ ) of central brains and specific brain areas in *Xantho hydrophilus*, *Xantho poressa*, and *Perrcon gibbesi*. Note that species are represented column by column (A–C). Comparable brain areas are given line by line (1–3). (A1–C1) display equally scaled micrographs of horizontal vibratome sections of one hemisphere per species. (A2a–C2) show neuropils of central complex in more detail. Arrow with a dashed line in A2a identifies one of a subset of somata within cell cluster (6) featuring distinct RFA-like immunoreactivity. (A3–C3) display neuropils and somata of primary olfactory pathway in deutocerebrum (DC). Abbreviations of immunohistochemical labelings and histochemical markers: NUC, nuclear marker (cyan); RFA, labelling against RFamide (green); SYN, labelling against synapsin (magenta). Other abbreviations: 6, 10, 9/11, and 14/15, cell clusters (6), (10), (9/11), and (14/15); AcN, accessory neuropil; AMPN, anterior medial protocerebral neuropil; CA, cerebral artery; CB, central body; DCL, deutocerebral chemosensory lobe; IF, lateral foramen; mF, median foramen; mPC, median protocerebrum; OG, olfactory glomerulus; PB, protocerebral bridge; PMPN, posterior medial protocerebral neuropil; PNT, projection neuron tract; PNTN, projection neuron tract neuropil; TC, tritocerebrum. Scale bars =  $100\ \mu\text{m}$ .

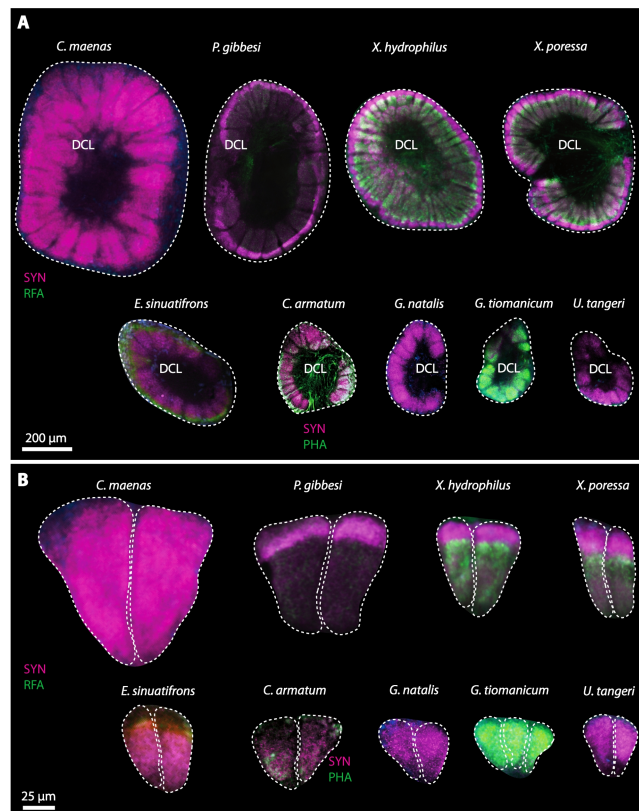
flanked by presumably bimodal contact-chemoreceptive sensilla. A preliminary analysis using classical histology and transmission electron microscopy (TEM) revealed that, in contrast to marine crustaceans, the aesthetascs of Coenobitidae have an asymmetric profile, with the protected side lined with a thick cuticle (Tuchina et al., 2015). The exposed side is covered with a thinner cuticle, a feature that most likely is necessary to enable the passage of odors (Stensmyr et al., 2005). These and other morphological features were interpreted as mechanisms to minimize water evaporation while maintaining the ability to detect volatile odorants in gaseous phase (Stensmyr et al., 2005). Furthermore, antennal olfaction at least in coenobitids is assumed to depend on activity of the aesthetasc-associated epidermal glands discharging their secretion to the base of related aesthetascs. By the aid of the mucous secretion covering the entire thinner cuticle, aesthetascs are provided with a moist, sticky layer essential for binding, sampling, and finally perceiving (after transcuticular passage) volatile odors (Tuchina et al., 2014).



**Figure 17** Collage of triple-labeled and equally scaled optical sections of brain hemispheres in *Carcinus maenas*, *Percnon gibbesi*, *Xantho hydrophilus*, *Xantho poressa*, *Epilobocera sinuatifrons*, *Cardisoma armatum*, *Gecarcoidea natalis*, *Geosesarma tiomanicum*, and *Uca tangeri*. The schematic drawing of the brain hemisphere in *C. maenas* (dorsal view) is modified from [Krieger et al. \(2012\)](#). Abbreviations of immunohistochemical labelings and histochemical markers: NUC, nuclear marker (cyan); RFA, labeling against RFamide (green or black); SYN, labeling against synapsin (magenta or black); AST, labeling against allostatin (green). 9/11 and 10, cell clusters (9/11) and (10); Other abbreviations: CB, central body; DC, deutocerebrum; DCL, deutocerebral chemosensory lobe; mPC, median protocerebrum; PNTN, projection neuron tract neuropil; TC, tritocerebrum. Note that for the comparison of sizes, the pairings of brain hemispheres are summarized somewhat arbitrarily, showing the exclusive marine species and the freshwater crab *E. sinuatifrons* on the upper two panels, and the four land crabs are displayed below.

However, in terrestrial Anomala, contrary to terrestrial Brachyura, the first antennae are extensively enlarged and the number of aesthetascs markedly increased as compared to marine representatives ([Table 2](#)), and there is evidence that Coenobitidae may have evolved good terrestrial olfactory abilities ([Greenaway, 2003](#)). In fact, behavioral studies have suggested that these animals are very effective in detecting food from a distance and in responding to volatile odors ([Rittschof & Sutherland, 1986](#); [Vannini & Ferretti, 1997](#); [Stensmyr et al., 2005](#)). These omnivorous crabs are attracted by volatiles emitted by many different sources such as seawater, wellwater, distilled water ([Vannini & Ferretti, 1997](#)), crushed conspecifics or snails ([Thacker, 1994](#)), fruits, seeds, flowers ([Rittschof & Sutherland, 1986](#); [Thacker, 1996](#); [Thacker, 1998](#)), and finally even horse faeces and human urine ([Rittschof & Sutherland, 1986](#)). By conducting a two-choice bioassay with *Coenobita clypeatus* using an arena with a centrally placed shelter with two pit-falls on each side, [Krång et al. \(2012\)](#) found that the animals were strongly attracted to natural odors from banana and apple. Furthermore, wind-tunnel experiments with *C. clypeatus* suggest





**Figure 18** Collage of double-labeled and equally scaled horizontal sections of deutocerebral chemosensory lobe (DCL in A) and its olfactory glomeruli (OG in B) in all species studied.

Deutocerebral chemosensory lobes and their olfactory glomeruli of exclusively marine species are shown followed by the neuropils of the freshwater brachyuran *Epilobocera sinuatifrons* and those of brachyuran species featuring different degrees of terrestrialization (in A and B, respectively). Abbreviations of immunohistochemical labelings and histochemical markers: PHA, actin labeling using phalloidin; RFA, labeling against RFamide (green); SYN, labeling against synapsin (magenta).

that these animals display a behavior that may be described as odor-gated anemotaxis (C Mißbach, J Krieger, S Harzsch, BS Hansson, 2015, unpublished results). Furthermore, electrophysiological studies using electroantennograms in *B. latro* confirmed that the aesthetascs respond to volatile substances (Stensmyr *et al.*, 2005). In aquatic crustaceans, antennular flicking enhances odorant capture by shedding the boundary layer (Koehl, 2011; Reidenbach & Koehl, 2011; Mellon Jr & Reidenbach, 2012). Coenobitidae also show flicking behavior similar to that seen in their marine relatives, thus maximizing odor sampling (Stensmyr *et al.*, 2005). Mellon Jr & Reidenbach (2012) suggested that considering the higher kinematic viscosity of air *versus* water and the resulting lower Reynolds numbers, the aesthetascs of Coenobitidae nevertheless operate in a range where boundary layer shedding could be effectively achieved by antennular flicking. Taken together, these behavioral and morphological observations suggest that terrestrial *Anomala* evolved aerial olfaction and actively use their first pair of antennae to detect volatile odors.

In contrast to this highly sophisticated olfaction-related behavior of Coenobitidae, our limited observations in the laboratory of the terrestrial brachyurans *C. armatum*, *G.*

*tiomanicum*, and *U. tangeri* suggest that their first pair of antennae extended and that flicking behavior occurred only if animals were immersed in water but the antennae were not exposed to the air. This holds also true for the second pair of antennae, except for *Uca tangeri*. In *Gecarcoidea natalis*, we did not observe that the first as well as the second pair of antennae were exposed in their terrestrial habitat as observed in three field trips to Christmas Island (J Krieger, MM Drew, S Harzsch, BS Hansson, 2012, unpublished obs.). These animals enter the water only during the spawning season (Orchard, 2012). As laid out above, crabs orient very well on land, and many studies have suggested vision to be the dominating sense in terrestrial Brachyura. Our morphological results and preliminary behavioral observations suggest that, contrary to Anomala, the detection of volatile substances plays only a minor role in the sensory ecology of Brachyura while on land. If it holds true that the first antennae in brachyurans are only functional in an aquatic environment, we may expect to see this reflected in the organization of primary processing areas within the brain. With respect to the critical cost-benefit ratio of maintaining the highly energy-demanding nervous tissue, providing processing capacities for poorly used sensory modalities may be too costly, so that these brain areas become reduced during evolution.

### **Chemical senses: the central olfactory pathway**

The chemosensory neurons associated with the aesthetascs *versus* the bimodal non-aesthetasc sensillae (contact-chemoreceptors) on the first antennae of malacostracan crustaceans innervate distinct regions in the brain (see review of Schmidt & Mellon, 2011; Derby & Weissburg, 2014). The axons of the olfactory sensory neurons (OSNs) associated with the aesthetascs target the deutocerebral chemosensory lobes (in our previous studies termed olfactory lobes), whereas the axons associated with non-aesthetasc sensilla innervate the lateral antenna I neuropil (LAN; for other crustacean chemosensory systems see Schmidt & Mellon, 2011). For all species studied in this paper, the deutocerebral chemosensory lobes of the deutocerebrum, the accessory neuropils, the lateral antenna I neuropil and the median antenna I neuropil were well identifiable. Their structure and arrangement corresponds to that described in other Brachyura (Sandeman et al., 1992; Krieger et al., 2012). Also, the projection neuron tract and the cerebral artery could be depicted as characteristic landmarks. In all species investigated, the deutocerebral chemosensory lobes (DCL) share the typical malacostracan organization, featuring a radial array of barrel- to wedge-shaped olfactory glomeruli that form the thick synaptic layer of the lobe, with their apices pointing inwards (compare Schachtner, Schmidt & Homberg, 2005; Schmidt & Mellon, 2011). Although the DCLs of the species studied here have a similar overall organization, the relative size of the DCL to the central brain displays the most striking difference between aquatic and terrestrial brachyurans. While in all aquatic brachyurans studied, the DCLs are comparably large, they are conspicuously much smaller within terrestrial brachyurans, an observation also made in the land crab *Chiromantes haematocheir* (Honma et al., 1996). This relation also applies to the number and size (length especially) of olfactory glomeruli which are higher in all aquatic brachyuran species studied (see Table 2). These morphological aspects seem to be strongly correlated with the reduction of aesthetasc

number and size as discussed above and therefore may represent another adaptation to terrestrialization (compare Figs. 17 and 18). However, a linear correlation between the number of aesthetascs and number of olfactory glomeruli could not be identified here, which is in accordance with the varying convergence ratios (aesthetascs/glomeruli) reported by *Beltz et al. (2003)*. In summary, morphometric quantifications of neuronal structures have indeed to be considered as rough estimates to infer sensory processing performance of a species, and the species-dependent lifestyles play of course a large role for the evaluation of olfactory capacity.

Although we have analyzed admittedly only few specimens (two males and one female), our findings nevertheless hint at a sexual dimorphism of the DCL of *U. tangeri*. In addition to numerous reports of sexual dimorphism of insect brains (e.g., *Koontz & Schneider, 1987*; *Homberg, Christensen & Hildebrand, 1989*; *Rospars & Hildebrand, 2000*; *Jundi et al., 2009*; *Streinzer et al., 2013*; *Montgomery & Ott, 2015*) especially of the primary olfactory system, such a sexual dimorphism in crustaceans is well described from the DCLs in Euphausiacea and Mysidacea (*Johansson & Hallberg, 1992*). Furthermore, *Loesel (2004)* suggested a sexual dimorphism in central body architecture in the genus *Uca*. However, further investigation of sexual dimorphic features within the brain of crustaceans is crucial to understand the general principles in crustacean communication and their underlying structures. Their pronounced sex-specific external morphology regarding courtship behavior (e.g., the conspicuous heterochely and eye stalk extensions in males) indicates that representatives of the genus *Uca* can serve as favorable study organisms to explore such aspects.

It has been well documented in aquatic malacostracans including crayfish, clawed and clawless lobsters, marine brachyurans, and hermit crabs (*Schachtner, Schmidt & Homberg, 2005*; *Schmidt & Mellon, 2011*; *Krieger et al., 2012*; *Polanska et al., 2012*) that the olfactory glomeruli are regionalized along their long axis to provide an outer cap, a subcap, and a base region. The subcap region of decapod olfactory glomeruli displays another level of subdivision when viewed in cross-sections and is separated into a central rod, a core region, and an outer ring. These patterns of subdivision of decapod olfactory glomeruli have been suggested to mirror a functional subdivision (*Schmidt & Ache, 1997*). Such a regionalization was not very obvious in the terrestrial brachyuran glomeruli which we analyzed. In conclusion, it seems obvious that the reduced sensory input to the deutocerebral sensory lobe in terrestrial brachyurans decreases the processing demands in the system, which in turn is reflected in the small size of olfactory glomeruli in addition to the lowered structural and functional complexity therein. These findings are also supported by the behavioral observations described above and support the idea that, while on land, olfaction is subordinate to vision in brachyurans. Along these lines, neuroanatomical studies of the olfactory system in marine *versus* terrestrial isopod crustaceans also suggested that in the terrestrial animals the deutocerebral chemosensory system has lost some of its importance during the evolutionary transition from water to land (*Harzsch et al., 2011*; *Kenning & Harzsch, 2013*).

Contrarywise, neuroanatomical studies analyzing the central olfactory pathway in terrestrial *Anomala* including *Coenobita clypeatus* (*Harzsch & Hansson, 2008*; *Polanska et al., 2012*; *Wolff et al., 2012*), and *Birgus latro* (*Krieger et al., 2010*) in comparison to several

marine anomalan taxa of the subgroup Paguroidea (Krieger *et al.*, 2012) suggested that in both terrestrial species, the primary olfactory centers targeted by antenna 1 aesthetasc afferents strongly dominate the brain and display conspicuous side lobes that are not present in the marine representatives, suggesting that a significant elaboration of brain areas involved in olfactory processing has taken place. The DCLs are markedly enlarged, and the number of olfactory glomeruli is increased compared to other marine anomalans studied (Table 2).

### The tritocerebrum: antenna II neuropil and flow detection

In arthropods, the detection of flow is essential for tracking odor sources but also for anemotaxis, and in crustaceans, antenna 2 most likely plays a major role in detecting flow. In many malacostracan crustaceans, the second pair of antennae bear mostly mechanosensory sensilla as well as bimodal chemo- and mechanosensory sensilla (Schmidt & Mellon, 2011) presumably working as contact-chemoreceptors. This pair of appendages is associated with the tritocerebral neuromere, and its afferents target the bilaterally paired antenna 2 neuropils (AnN) that extend posterolaterally to either side of the esophageal foramen (Figs. 9D–9E, 11D, 13E and 15B). In some representatives of Decapoda, this neuropil is transversely divided into segment-like synaptic fields, suggesting a somato- or spatiotopic representation of the mechanoreceptors along the length of the second antenna (reviewed in Krieger *et al.*, 2012). In the marine anomalan *Pagurus bernhardus*, this neuropil is elongate and the transverse segmentation is very obvious (Krieger *et al.*, 2012), enforcing the idea that the sensory array of antenna 2 may be mapped along its length. In terrestrial Anomala, the antenna 2 neuropils of *C. clypeatus* and *B. latro* are rather inconspicuous, as is a transverse segmentation (Harzsch & Hansson, 2008; Krieger *et al.*, 2010). In isopods, which are considered the most successful terrestrialized crustaceans, a transverse segmentation of the prominent AnN, as has been shown for hermit crabs, is clearly identifiable in marine but indistinct in terrestrial isopods (Harzsch *et al.*, 2011). Since in terrestrial isopods, the first pair of antennae is highly reduced in size and the associated DCL seems to be absent, the idea arose that the pronounced second pair of antennae and its associated antenna 2 neuropils together may function as the major sensory organ (Harzsch *et al.*, 2011; Kenning & Harzsch, 2013). Contrarywise, in both marine (Krieger *et al.*, 2012) as well as terrestrial brachyurans, the antenna 2 neuropil is part of a large neuropil mass that is composed of both deuto- and tritocerebral portions, thus making the antenna 2 neuropil hardly identifiable. A transverse segmentation has not been detected so far, neither in marine nor in terrestrial brachyurans. From these data and especially from behavioral observations in Brachyura, one could argue that flow detection on land would have to be realized by other body parts rather than in the second pair of antennae. Undoubtedly, further analyses are required to clarify the functional relevance of the second pair of antennae and to check for structural as well as functional differences that may represent adaptations for detecting flow in water *versus* in air.

## CONCLUSIONS

During a relatively short evolutionary time period, several crustacean lineages have convergently adapted to a number of highly diverse terrestrial habitats in which they have become highly successful (reviews of [Bliss & Mantel, 1968](#); [Powers & Bliss, 1983](#); [Greenaway, 1988](#); [Greenaway, 1999](#); [Hartnoll, 1988](#)). We are interested in which crustacean lineages successfully evolved aerial olfaction during this evolutionary transition ([Hansson et al., 2011](#)). As far as isopod crustaceans are concerned, it appears that their deutocerebral neuronal substrate for distance olfaction has largely eroded away in the terrestrial species, whereas there is good evidence for contact chemoreception using the tritocerebral pair of antennae (e.g., [Harzsch et al., 2011](#); [Kenning & Harzsch, 2013](#)). For representatives of the Coenobitidae (Anomala), however, there is compelling evidence from neuroanatomical, physiological, transcriptomic, and behavioral studies that aerial olfaction plays a major role in the animal's behavioral repertoire ([Harzsch & Hansson, 2008](#); [Krång et al., 2012](#); [Polanska et al., 2012](#); [Groh et al., 2014](#); [Tuchina et al., 2014](#)). Brachyura take an intermediate position, and the question arises which aspects of the terrestrial olfactory landscape they are able to detect with their reduced peripheral and central olfactory pathway. In addition to volatile chemicals, humidity and CO<sub>2</sub>-concentration may be crucial cues for these animals. As with terrestrial species analyzed, a clear correlation between the specific brain anatomy and the degree of terrestriality could not be deduced. Furthermore, our study raises the possibility that in the semi-aquatic *Uca tangeri* sex-specific differences regarding average size and number of olfactory glomeruli exist, which may indicate that communication *via* sexual pheromones could be a possible function in some land crab species. Alternatively, those taxa with a mostly amphibious lifestyle may use their olfactory system while submerged in water. This idea most likely does not apply to *G. natalis* which, when immersed in water for a short amount of time will drown. Since there are more brachyuran taxa that independently succeeded in evolving a terrestrial life-style than those representatives examined here ([Fig. 1](#)), an ongoing comparative analysis of brachyuran neuroanatomy remains an exciting topic. Therefore, further studies to evaluate and compare general aspects of terrestrialization within brachyurans as well as with those of other crustacean lineages are promising.

Only a few lineages within Crustacea have independently evolved terrestrial olfaction to different degrees, suggesting that the evolution of effective olfactory systems (or sensory systems more generally) on land is highly challenging. As for amphibious olfaction in secondarily aquatic insects, [Hodgson \(1953\)](#) reported that in the amphibious beetle, *Laccophilus maculosus*, specimens are capable to perceive the same chemical compounds in air as well as under water, even though sensitivity in air is increased by a factor of 5–10 in comparison to underwater sensitivity. Supported by morphological data, bioassays using antennal ablations in *L. maculosus* suggest an amphibious chemoreception which is most likely based on the antennal sensilla basiconica ([Hodgson, 1953](#)). However, an effective amphibian olfaction in brachyurans with terrestrial adaptations like in the secondarily aquatic *L. maculosus* could not be verified here.



When comparing different taxa within Crustacea that conquered land, it becomes obvious that they feature a variety of terrestrial adaptations to different degrees; and from a scientific point of view, the objective to evaluate those different degrees is logical. The proposed levels of terrestrial adaptation from  $T_1$  to  $T_5$  for land crabs after Powers & Bliss, (1983) are commonly used to date, but it was also reported that this classification is “far from perfect” (see review Hartnoll, 1988). Derived from general biological considerations, this classification features five gradual levels of terrestriality. These features include the time of day and the total periods spent actively on land (intertidal species), the requirement of regular immersion or drinking of water, and the (sea) water-dependency for larval development. Although this classification comprised several aspects of terrestriality, it is not possible to assign each species to a unique level in either case because the conquest of land is a gradual process that demands for diverse different adaptations. Therefore, Schubert and co-workers (2000) proposed three simplified degrees of terrestrialization referring to adult life in addition to larval development as follows: (A) terrestrial adults with marine larvae, (B) limnic adults with marine larvae, and (C) adults that breed in inland waters and hence are independent from the ocean (e.g., several Sesamidae). If we take a perspective solely related to deutocerebral olfaction (as mediated by the first pair of antennae), the levels of terrestrial adaptation may be grouped as  $TO_0$ —not functional at all (terrestrial isopods);  $TO_1$ —functional in water and non-functional on land (as suggested for *C. armatum*);  $TO_2$ —functional in water as well as on land => amphibious (needs to be tested like in the amphibious beetle *L. maculosus*); and  $TO_3$  not functional in water but functional on land (Coenobitidae and presumably *G. natalis*). Although it is beyond the scope of this paper to propose an alternative extensive classification system, we nevertheless conclude that the existing classification systems must be improved to describe the degree of terrestrial adaptation for an animal as a whole. In fact, it seems crucial that multiple biological aspects such as development, mating, foraging, biorhythm, physiology as well as anatomy be taken into account for an adequate evaluation of terrestriality of each species.

## ACKNOWLEDGEMENTS

We would like to express our gratitude to Guido Dehnhardt and the staff of the Marine Science Center in Rostock for free provision of diving equipment and the permission to sample *Carcinus maenas* on-site. We cordially thank Beate Johl (Zoological Institute and Museum at the University of Greifswald) for her assistance of analyzing the first antennae in specimens of the marine brachyurans of the Mediterranean *Xantho hydrophilus*, *X. poressa*, and *Percnon gibbesi*. We greatly appreciate the generous logistic and conceptual support by BS Hansson (Max Planck Institute for Chemical Ecology, Jena, Germany) and Mr. Mike Misso and Dr. Michael Smith from the Christmas Island National Park authorities during the collection of specimens of *G. natalis*. Glenda Jones and Sandra Banks are gratefully acknowledged for handling the research permits.

## ADDITIONAL INFORMATION AND DECLARATIONS

### Funding

The authors received no funding for this work.

### Competing Interests

The authors declare there are no competing interests.

### Author Contributions

- Jakob Krieger conceived and designed the experiments, performed the experiments, analyzed the data, wrote the paper, prepared figures and/or tables, reviewed drafts of the paper.
- Philipp Braun performed the experiments, analyzed the data, wrote the paper, prepared figures and/or tables, reviewed drafts of the paper.
- Nicole T. Rivera performed the experiments.
- Christoph D. Schubart and Steffen Harzsch conceived and designed the experiments, contributed reagents/materials/analysis tools, wrote the paper, reviewed drafts of the paper.
- Carsten H.G. Müller contributed reagents/materials/analysis tools, prepared figures and/or tables, reviewed drafts of the paper.

### Field Study Permissions

The following information was supplied relating to field study approvals (i.e., approving body and any reference numbers):

1. Australian Government; Department of the Environment; Parks Australia; Christmas Island National Parks.
2. AU\_COM 2010-090-1.

### Data Availability

Raw data of brain section series is available from <https://www.morphdbase.de> under the "media" tab under a combination of the short title "Krieger" and an identifier according to the species and ID of the specimen.

## REFERENCES

- Ahyong ST, O'Meally D. 2004. Phylogeny of the decapoda reptantia: resolution using three molecular loci and morphology. *The Raffles Bulletin of Zoology* **52**:673–693.
- Altevogt R. 1957. Untersuchungen zur Biologie, Ökologie und Physiologie Indischer Winkerkrabben. *Zeitschrift für Morphologie und Ökologie der Tiere* **46**:1–110 DOI [10.1007/BF00437655](https://doi.org/10.1007/BF00437655).
- Altevogt R. 1959. Ökologische und Ethologische Studien an Europas einziger Winkerkrabbe *Uca tangeri* Eydoux. *Zeitschrift für Morphologie und Ökologie der Tiere* **48**:123–146 DOI [10.1007/BF00407837](https://doi.org/10.1007/BF00407837).

- Beltz BS, Kordas K, Lee MM, Long JB, Benton JL, Sandeman DC. 2003.** Ecological, evolutionary, and functional correlates of sensilla number and glomerular density in the olfactory system of decapod crustaceans. *The Journal of Comparative Neurology* **455**:260–269 DOI [10.1002/cne.10474](https://doi.org/10.1002/cne.10474).
- Berón de Astrada M, Bengochea M, Sztarker J, Delorenzi A, Tomsic D. 2013.** Behaviorally related neural plasticity in the arthropod optic lobes. *Current Biology* **23**:1389–1398 DOI [10.1016/j.cub.2013.05.061](https://doi.org/10.1016/j.cub.2013.05.061).
- Berón de Astrada M, Medan V, Tomsic D. 2011.** How visual space maps in the optic neuropils of a crab. *The Journal of Comparative Neurology* **519**:1631–1639 DOI [10.1002/cne.22612](https://doi.org/10.1002/cne.22612).
- Berón de Astrada M, Tomsic D. 2002.** Physiology and morphology of visual movement detector neurons in a crab (Decapoda: Brachyura). *Journal of Comparative Physiology A* **188**:539–551 DOI [10.1007/s00359-002-0328-4](https://doi.org/10.1007/s00359-002-0328-4).
- Blaustein DN, Derby CD, Simmons RB, Beall AC. 1988.** Structure of the brain and medulla terminalis of the spiny lobster *Panulirus argus* and the crayfish *Procambarus clarkii*, with an emphasis on olfactory centers. *Journal of Crustacean Biology* **493–519** DOI [10.2307/1548686](https://doi.org/10.2307/1548686).
- Bliss DE, Mantel LH. 1968.** Adaptations of crustaceans to land: a summary and analysis of new findings. *American Zoologist* **8**:673–685 DOI [10.1093/icb/8.3.673](https://doi.org/10.1093/icb/8.3.673).
- Bliss DE, Welsh JH. 1952.** The neurosecretory system of brachyuran Crustacea. *Biological Bulletin* **103**:157–169 DOI [10.2307/1538442](https://doi.org/10.2307/1538442).
- Borradaile LA. 1916.** Crustacea. Part II. *Porcellanopagurus*: an instance of carcinization. In: British Antarctic (Terra Nova) expedition, 1910. In: *Natural history report, zoology*. London: British Museum (Natural History), 111–126.
- Brösing A, Richter S, Scholtz G. 2007.** Phylogenetic analysis of the Brachyura (Crustacea, Decapoda) based on characters of the foregut with establishment of a new taxon. *Journal of Zoological Systematics and Evolutionary Research* **45**:20–32 DOI [10.1111/j.1439-0469.2006.00367.x](https://doi.org/10.1111/j.1439-0469.2006.00367.x).
- Burggren WW, McMahon BR. 1988.** Circulation. In: Burggren WW, McMahon BR, eds. *Biology of the land crabs*. Cambridge: Cambridge University Press, 298–332.
- Cape SS, Rehm KJ, Ma M, Marder E, Li L. 2008.** Mass spectral comparison of the neuropeptide complement of the stomatogastric ganglion and brain in the adult and embryonic lobster, *Homarus americanus*. *Journal of Neurochemistry* **105**:690–702 DOI [10.1111/j.1471-4159.2007.05154.x](https://doi.org/10.1111/j.1471-4159.2007.05154.x).
- Christie AE, Sousa GL, Rus S, Smith CM, Towle DW, Hartline DK, Dickinson PS. 2008.** Identification of A-type allatostatins possessing-YXFGI/Vamide carboxy-termini from the nervous system of the copepod crustacean *Calanus finmarchicus*. *General and Comparative Endocrinology* **155**:526–533 DOI [10.1016/j.yggen.2007.09.002](https://doi.org/10.1016/j.yggen.2007.09.002).
- Christie AE, Stemmler EA, Dickinson PS. 2010.** Crustacean neuropeptides. *Cellular and Molecular Life Sciences* **67**:4135–4169 DOI [10.1007/s00018-010-0482-8](https://doi.org/10.1007/s00018-010-0482-8).
- Derby CD, Sorensen PW. 2008.** Neural processing, perception, and behavioral responses to natural chemical stimuli by fish and crustaceans. *Journal of Chemical Ecology* **34**:898–914 DOI [10.1007/s10886-008-9489-0](https://doi.org/10.1007/s10886-008-9489-0).

- Derby CD, Steullet P, Horner AJ, Cate HS. 2001.** The sensory basis of feeding behaviour in the Caribbean spiny lobster, *Panulirus argus*. *Marine and Freshwater Research* **52**:1339–1350 DOI [10.1071/MF01099](https://doi.org/10.1071/MF01099).
- Derby CD, Weissburg MJ. 2014.** The chemical senses and chemosensory ecology of crustaceans. In: Derby CD, Thiel M, eds. *Crustacean nervous systems and their control of behavior*. Oxford, New York: Oxford University Press.
- Detto T. 2007.** The fiddler crab *Uca mjoebergi* uses colour vision in mate choice. *Proceedings of the Royal Society of London B: Biological Sciences* **274**:2785–2790 DOI [10.1098/rspb.2007.1059](https://doi.org/10.1098/rspb.2007.1059).
- Detto T, Backwell PRY. 2009.** The fiddler crab *Uca mjoebergi* uses ultraviolet cues in mate choice but not aggressive interactions. *Animal Behaviour* **78**:407–411 DOI [10.1016/j.anbehav.2009.05.014](https://doi.org/10.1016/j.anbehav.2009.05.014).
- Detto T, Backwell PRY, Hemmi JM, Zeil J. 2006.** Visually mediated species and neighbour recognition in fiddler crabs (*Uca mjoebergi* and *Uca capricornis*). *Proceedings of the Royal Society of London B: Biological Sciences* **273**:1661–1666 DOI [10.1098/rspb.2006.3503](https://doi.org/10.1098/rspb.2006.3503).
- Diesel R, Schubart CD. 2000.** Die außergewöhnliche Evolutionsgeschichte jamaikanischer Felsenkrabben. *Biologie in unserer Zeit* **30**:136–147 DOI [10.1002/\(SICI\)1521-415X\(200003\)30:3<136::AID-BIUZ136>3.0.CO;2-R](https://doi.org/10.1002/(SICI)1521-415X(200003)30:3<136::AID-BIUZ136>3.0.CO;2-R).
- Diesel R, Schubart CD, Schuh M. 2000.** A reconstruction of the invasion of land by Jamaican crabs (Grapsidae: Sesarminae). *Journal of Zoology* **250**:141–160 DOI [10.1111/j.1469-7998.2000.tb01066.x](https://doi.org/10.1111/j.1469-7998.2000.tb01066.x).
- Dircksen H, Skiebe P, Abel B, Agricola HJ, Buchner K, Muren JE, Nässel DR. 1999.** Structure, distribution, and biological activity of novel members of the allatostatin family in the crayfish *Orconectes limosus*. *Peptides* **20**:695–712 DOI [10.1016/S0196-9781\(99\)00052-2](https://doi.org/10.1016/S0196-9781(99)00052-2).
- Dixon CJ, Ahyong ST, Schram FR. 2003.** A new hypothesis of decapod phylogeny. *Crustaceana* **76**:935–975 DOI [10.1163/156854003771997846](https://doi.org/10.1163/156854003771997846).
- Dockray GJ. 2004.** The expanding family of-RFamide peptides and their effects on feeding behaviour. *Experimental Physiology* **89**:229–235 DOI [10.1113/expphysiol.2004.027169](https://doi.org/10.1113/expphysiol.2004.027169).
- Duve H, Johnsen AH, Maestro JL, Scott AG, Jaros PP, Thorpe A. 1997.** Isolation and identification of multiple neuropeptides of the allatostatin superfamily in the shore crab *Carcinus maenas*. *European Journal of Biochemistry* **250**:727–734 DOI [10.1111/j.1432-1033.1997.00727.x](https://doi.org/10.1111/j.1432-1033.1997.00727.x).
- Duve H, Johnsen AH, Scott AG, Thorpe A. 2002.** Allatostatins of the tiger prawn, *Penaeus monodon* (Crustacea: Penaeidea). *Peptides* **23**:1039–1051 DOI [10.1016/S0196-9781\(02\)00035-9](https://doi.org/10.1016/S0196-9781(02)00035-9).
- Elofsson R, Hagberg M. 1986.** Evolutionary aspects on the construction of the first optic neuropil (lamina) in Crustacea. *Zoomorphology* **106**:174–178 DOI [10.1007/BF00312206](https://doi.org/10.1007/BF00312206).

- Fu Q, Christie AE, Li L. 2005.** Mass spectrometric characterization of crustacean hyperglycemic hormone precursor-related peptides (CPRPs) from the sinus gland of the crab, *Cancer productus*. *Peptides* **26**:2137–2150 DOI [10.1016/j.peptides.2005.03.040](https://doi.org/10.1016/j.peptides.2005.03.040).
- Ghiradella HT, Case JF, Cronshaw J. 1968a.** Fine structure of the aesthetasc hairs of *Coenobita compressus* Edwards. *Journal of Morphology* **124**:361–385 DOI [10.1002/jmor.1051240309](https://doi.org/10.1002/jmor.1051240309).
- Ghiradella HT, Case JF, Cronshaw J. 1968b.** Structure of aesthetascs in selected marine and terrestrial decapods: chemoreceptor morphology and environment. *American Zoologist* **8**:603–621 DOI [10.1093/icb/8.3.603](https://doi.org/10.1093/icb/8.3.603).
- Gleeson RA, McDowell LM, Aldrich HC. 1996.** Structure of the aesthetasc (olfactory) sensilla of the blue crab, *Callinectes sapidus*: transformations as a function of salinity. *Cell and Tissue Research* **284**:279–288 DOI [10.1007/s004410050588](https://doi.org/10.1007/s004410050588).
- Grasso FW, Basil JA. 2002.** How lobsters, crayfishes, and crabs locate sources of odor: current perspectives and future directions. *Current Opinion in Neurobiology* **12**:721–727 DOI [10.1016/S0959-4388\(02\)00388-4](https://doi.org/10.1016/S0959-4388(02)00388-4).
- Greenaway P. 1988.** Ion and water balance. In: Burggren WW, McMahon BR, eds. *Biology of the land crabs*. Cambridge: Cambridge University Press, 211–248.
- Greenaway P. 1999.** Physiological diversity and the colonisation of land. In: Schram FR, Von Vaupel Klein JC, eds. *Proceedings of the fourth international crustacean congress, vol I, Amsterdam, The Netherlands, 20–24 July 1998*. Leiden: Brill Academic Publishers, 823–842.
- Greenaway P. 2003.** Terrestrial adaptations in the anomura (Crustacea: Decapoda). *Memoirs of Museum Victoria* **60**:13–26.
- Greenberg MJ, Price DA. 1992.** Chapter 3 relationships among the FMRFamide-like peptides. In: Joosse J, Buijs RM, Tilders FJH, eds. *The peptidergic neuron. Progress in brain research*, Amsterdam, Elsevier 25–37.
- Groh KC, Vogel H, Stensmyr MC, Grosse-Wilde E, Hansson BS. 2014.** The hermit crab's nose—antennal transcriptomics. *Frontiers in Neuroscience* **7**:1–12.
- Grünert U, Ache BW. 1988.** Ultrastructure of the aesthetasc (olfactory) sensilla of the spiny lobster, *Panulirus argus*. *Cell and Tissue Research* **251**:95–103 DOI [10.1007/BF00215452](https://doi.org/10.1007/BF00215452).
- Hallberg E, Hansson BS. 1999.** Arthropod sensilla: morphology and phylogenetic considerations. *Microscopy Research and Technique* **47**:428–439 DOI [10.1002/\(SICI\)1097-0029\(19991215\)47:6<428::AID-JEMT6>3.0.CO;2-P](https://doi.org/10.1002/(SICI)1097-0029(19991215)47:6<428::AID-JEMT6>3.0.CO;2-P).
- Hallberg E, Johansson KUI, Elofsson R. 1992.** The aesthetasc concept: structural variations of putative olfactory receptor cell complexes in crustacea. *Microscopy Research and Technique* **22**:325–335 DOI [10.1002/jemt.1070220403](https://doi.org/10.1002/jemt.1070220403).
- Hallberg E, Skog M. 2011.** Chemosensory sensilla in crustaceans. In: Breithaupt T, Thiel M, eds. *Chemical communication in crustaceans*. New York: Springer, 103–121.
- Hansson BS, Harzsch S, Knaden M, Stensmyr MC. 2011.** The neural and behavioral basis of chemical communication in terrestrial crustaceans. In: Breithaupt T, Thiel M, eds. *Chemical communication in crustaceans*. New York: Springer, 149–173.



- Hanström B. 1925.** The Olfactory centers in crustaceans. *The Journal of Comparative Neurology* **38**:221–250 DOI [10.1002/cne.900380302](https://doi.org/10.1002/cne.900380302).
- Harms JW. 1932.** Die Realisation von Genen und die konsekutive Adaptation. II. *Birgus latro* (L.) Als Landkreb und seine Beziehungen zu den Coenobiten. *Zeitschrift für Wissenschaften Zoologie* **140**:168–290.
- Hartnoll RG. 1988.** Evolution, systematics, and geographical distribution. In: Burggren WW, McMahon BR, eds. *Biology of the land crabs*. Cambridge: Cambridge University Press, 6–54.
- Harzsch S. 2002.** The phylogenetic significance of crustacean optic neuropils and chiasmata: a re-examination. *The Journal of Comparative Neurology* **453**:10–21 DOI [10.1002/cne.10375](https://doi.org/10.1002/cne.10375).
- Harzsch S, Anger K, Dawirs RR. 1997.** Immunocytochemical detection of acetylated alpha-tubulin and *Drosophila* synapsin in the embryonic crustacean nervous system. *The International Journal of Developmental Biology* **41**:477–484.
- Harzsch S, Dawirs RR. 1996.** Maturation of the compound eyes and eyestalk ganglia during larval development of the brachyuran crustaceans *Hyas araneus* L (Decapoda, Majidae) and *Carcinus maenas* L (Decapoda, Portunidae). *Zoology-Analysis of Complex Systems* **99**:189–204.
- Harzsch S, Hansson BS. 2008.** Brain architecture in the terrestrial hermit crab *Coenobita clypeatus* (Anomura, Coenobitidae), a crustacean with a good aerial sense of smell. *BMC Neuroscience* **9**:58 DOI [10.1186/1471-2202-9-58](https://doi.org/10.1186/1471-2202-9-58).
- Harzsch S, Miller J, Benton JL, Beltz BS. 1999.** From embryo to adult: persistent neurogenesis and apoptotic cell death shape the lobster deutocerebrum. *The Journal of Neuroscience* **19**:3472–3485.
- Harzsch S, Miller J, Benton JL, Dawirs RR, Beltz BS. 1998.** Neurogenesis in the thoracic neuromeres of two crustaceans with different types of metamorphic development. *The Journal of Experimental Biology* **201**:2465–2479.
- Harzsch S, Müller CHG. 2007.** A new look at the ventral nerve centre of *Sagitta*: implications for the phylogenetic position of Chaetognatha (arrow worms) and the evolution of the bilaterian nervous system. *Frontiers in Zoology* **4**:1–15 DOI [10.1186/1742-9994-4-14](https://doi.org/10.1186/1742-9994-4-14).
- Harzsch S, Rieger V, Krieger J, Seefluth F, Strausfeld NJ, Hansson BS. 2011.** Transition from marine to terrestrial ecologies: changes in olfactory and tritocerebral neuropils in land-living isopods. *Arthropod Structure & Development* **40**:244–257 DOI [10.1016/j.asd.2011.03.002](https://doi.org/10.1016/j.asd.2011.03.002).
- Harzsch S, Sandeman DC, Chaigneau J. 2012.** Morphology and development of the central nervous system. In: Forest J, Von Vaupel Klein JC, eds. *Treatise on zoology-anatomy, taxonomy, biology. The crustacea*. Leiden: Brill, 9–236.
- Hay ME. 2011.** Crustaceans as powerful models in aquatic chemical ecology. In: Breithaupt T, Thiel M, eds. *Chemical communication in crustaceans*. New York: Springer, 41–62.
- Hazlett BA. 2011.** Chemical cues and reducing the risk of predation. In: Breithaupt T, Thiel M, eds. *Chemical communication in crustaceans*. New York: Springer, 355–370.

- Helluy SM, Benton JL, Langworthy KA, Ruchhoeft ML, Beltz BS. 1996.** Glomerular organization in developing olfactory and accessory lobes of American lobsters: stabilization of numbers and increase in size after metamorphosis. *Journal of Neurobiology* 29:459–472 DOI 10.1002/(SICI)1097-4695(199604)29:4<459::AID-NEU4>3.0.CO;2-7.
- Hemmi JM, Tomsic D. 2012.** The neuroethology of escape in crabs: from sensory ecology to neurons and back. *Current Opinion in Neurobiology* 22:194–200 DOI 10.1016/j.conb.2011.11.012.
- Hemmi JM, Zeil J. 2003.** Robust judgement of inter-object distance by an arthropod. *Nature* 421:160–163 DOI 10.1038/nature01247.
- Hodgson ES. 1953.** A study of chemoreception in aqueous and gas phases. *The Biological Bulletin* 105:115–127 DOI 10.2307/1538560.
- Homberg U. 1994.** *Distribution of neurotransmitters in the insect brain*. Jena: Gustav Fischer Verlag.
- Homberg U, Christensen TA, Hildebrand JG. 1989.** Structure and function of the deutocerebrum in insects. *Annual Review of Entomology* 34:477–501 DOI 10.1146/annurev.en.34.010189.002401.
- Honma Y, Takano K, Chiba A, Oka S. 1996.** Immunohistochemical localization of neuropeptides in the cephalic ganglion of the land crab *Chiromantes haematocheir*. *Fisheries Science* 62:909–913.
- Huybrechts J, Nusbaum MP, Bosch LV, Baggerman G, Loof AD, Schoofs L. 2003.** Neuropeptidomic analysis of the brain and thoracic ganglion from the Jonah crab, *Cancer borealis*. *Biochemical and Biophysical Research Communications* 308:535–544 DOI 10.1016/S0006-291X(03)01426-8.
- Hyatt GW. 1975.** Physiological and behavioral evidence for color discrimination by fiddler crabs (Brachyura, Ocypodidae, genus *Uca*). In: Vernberg FJ, ed. *Physiological ecology of estuarine organisms*. Columbia: University of South Carolina Press, 333–365.
- Johansson KUI, Hallberg E. 1992.** The organization of the olfactory lobes in Euphausiacea and Mysidacea (Crustacea, Malacostraca). *Zoomorphology* 112:81–89 DOI 10.1007/BF01673809.
- Jundi B El, Huetteroth W, Kurylas AE, Schachtner J. 2009.** Anisometric brain dimorphism revisited: implementation of a volumetric 3D standard brain in *Manduca sexta*. *The Journal of Comparative Neurology* 517:210–225 DOI 10.1002/cne.22150.
- Kenning M, Harzsch S. 2013.** Brain anatomy of the marine isopod *Saduria entomon* Linnaeus, 1758 (Valvifera, Isopoda) with special emphasis on the olfactory pathway. *Frontiers in Neuroanatomy* 7:1–14 DOI 10.3389/fnana.2013.00032.
- Kenyon FC. 1896.** The brain of the bee. A preliminary contribution to the morphology of the nervous system of the arthropoda. *Journal of Comparative Neurology* 6:133–210 DOI 10.1002/cne.910060302.
- Klagges BRE, Heimbeck G, Godenschwege TA, Hofbauer A, Pflugfelder GO, Reifegerste R, Reisch D, Schaupp M, Buchner S, Buchner E. 1996.** Invertebrate synapsins: a single gene codes for several isoforms in *Drosophila*. *Journal of Neuroscience* 16:3154–3165.

- Koehl MAR. 2011.** Hydrodynamics of sniffing by crustaceans. In: Breithaupt T, Thiel M, eds. *Chemical communication in crustaceans*. New York: Springer, 85–102.
- Koontz MA, Schneider D. 1987.** Sexual dimorphism in neuronal projections from the antennae of silk moths (*Bombyx mori*, *Antheraea polyphemus*) and the gypsy moth (*Lymantria dispar*). *Cell and Tissue Research* **249**:39–50 DOI [10.1007/BF00215416](https://doi.org/10.1007/BF00215416).
- Korte R. 1965.** Durch polarisiertes Licht hervorgerufene Optomotorik bei *Uca tangeri*. *Experientia* **21**:98–98 DOI [10.1007/BF02144765](https://doi.org/10.1007/BF02144765).
- Krång A-S, Knaden M, Steck K, Hansson BS. 2012.** Transition from sea to land: olfactory function and constraints in the terrestrial hermit crab *Coenobita clypeatus*. *Proceedings of the Royal Society B: Biological Sciences* **279**:3510–3519 DOI [10.1098/rspb.2012.0596](https://doi.org/10.1098/rspb.2012.0596).
- Kreissl S, Strasser C, Galizia CG. 2010.** Allatostatin immunoreactivity in the honeybee brain. *The Journal of Comparative Neurology* **518**:1391–1417 DOI [10.1002/cne.22343](https://doi.org/10.1002/cne.22343).
- Krieger J, Sandeman RE, Sandeman DC, Hansson BS, Harzsch S. 2010.** Brain architecture of the largest living land arthropod, the Giant Robber Crab *Birgus latro* (Crustacea, Anomura, Coenobitidae): evidence for a prominent central olfactory pathway? *Frontiers in Zoology* **7**:1–31 DOI [10.1186/1742-9994-7-25](https://doi.org/10.1186/1742-9994-7-25).
- Krieger J, Sombke A, Seefluth F, Kenning M, Hansson BS, Harzsch S. 2012.** Comparative brain architecture of the European shore crab *Carcinus maenas* (Brachyura) and the common hermit crab *Pagurus bernhardus* (Anomura) with notes on other marine hermit crabs. *Cell and Tissue Research* **348**:47–69.
- Land M, Layne J. 1995.** The visual control of behaviour in fiddler crabs. II: tracking control systems in courtship and defence. *Journal of Comparative Physiology A: Neuroethology, Sensory, Neural, and Behavioral Physiology* **177**:91–103 DOI [10.1007/BF00243401](https://doi.org/10.1007/BF00243401).
- Layne JE, Barnes WJP, Duncan LMJ. 2003a.** Mechanisms of homing in the fiddler crab *Uca rapax* 1. Spatial and temporal characteristics of a system of small-scale navigation. *Journal of Experimental Biology* **206**:4413–4423 DOI [10.1242/jeb.00660](https://doi.org/10.1242/jeb.00660).
- Layne JE, Barnes WJP, Duncan LMJ. 2003b.** Mechanisms of homing in the fiddler crab *Uca rapax* 2. Information sources and frame of reference for a path integration system. *Journal of Experimental Biology* **206**:4425–4442 DOI [10.1242/jeb.00661](https://doi.org/10.1242/jeb.00661).
- Loesel R. 2004.** Comparative morphology of central neuropils in the brain of arthropods and its evolutionary and functional implications. *Acta Biologica Hungarica* **55**:39–51 DOI [10.1556/ABiol.55.2004.1-4.6](https://doi.org/10.1556/ABiol.55.2004.1-4.6).
- Loesel R, Wolf H, Kenning M, Harzsch S, Sombke A. 2013.** Architectural principles and evolution of the arthropod central nervous system. In: Minelli A, Boxshall G, Fusco G, eds. *Arthropod biology and evolution*. Berlin Heidelberg: Springer, 299–342.
- Ma M, Chen R, Sousa GL, Bors EK, Kwiatkowski MA, Goiney CC, Goy MF, Christie AE, Li L. 2008.** Mass spectral characterization of peptide transmitters/hormones in the nervous system and neuroendocrine organs of the American lobster *Homarus americanus*. *General and Comparative Endocrinology* **156**:395–409 DOI [10.1016/j.ygcen.2008.01.009](https://doi.org/10.1016/j.ygcen.2008.01.009).

- Ma M, Bors EK, Dickinson ES, Kwiatkowski MA, Sousa GL, Henry RP, Smith CM, Towle DW, Christie AE, Li L. 2009a. Characterization of the *Carcinus maenas* neuropeptidome by mass spectrometry and functional genomics. *General and Comparative Endocrinology* 161:320–334 DOI 10.1016/j.ygcen.2009.01.015.
- Ma M, Gard AL, Xiang F, Wang J, Davoodian N, Lenz PH, Malecha SR, Christie AE, Li L. 2010. Combining in silico transcriptome mining and biological mass spectrometry for neuropeptide discovery in the Pacific white shrimp *Litopenaeus vannamei*. *Peptides* 31:27–43 DOI 10.1016/j.peptides.2009.10.007.
- Ma M, Szabo TM, Jia C, Marder E, Li L. 2009b. Mass spectrometric characterization and physiological actions of novel crustacean C-type allatostatins. *Peptides* 30:1660–1668 DOI 10.1016/j.peptides.2009.05.023.
- McLaughlin PA, Lemaitre R. 1997. Carcinization in the Anomura—fact or fiction? I. Evidence from adult morphology. *Contributions to Zoology* 67:79–123.
- McMahon BR, Burggren WW. 1988. Respiration. In: Burggren WW, McMahon BR, eds. *Biology of the land crabs*. Cambridge: Cambridge University Press, 249–297.
- Medan V, Berón de Astrada M, Scarano F, Tomsic D. 2015. A network of visual motion-sensitive neurons for computing object position in an arthropod. *The Journal of Neuroscience* 35:6654–6666 DOI 10.1523/JNEUROSCI.4667-14.2015.
- Mellon Jr D. 2007. Combining dissimilar senses: central processing of hydrodynamic and chemosensory inputs in aquatic crustaceans. *The Biological Bulletin* 213:1–11 DOI 10.2307/25066612.
- Mellon Jr D, Alones V. 1993. Cellular organization and growth-related plasticity of the crayfish olfactory midbrain. *Microscopy Research and Technique* 24:231–259 DOI 10.1002/jemt.1070240304.
- Mellon Jr D, Reidenbach MA. 2012. Fluid mechanical problems in crustacean active chemoreception. In: Barth F, Humphrey JAC, Srinivasan MV, eds. *Frontiers in sensing: from biology to engineering*. Wien: Springer-Verlag, 159–170.
- Mercier AJ, Friedrich R, Boldt M. 2003. Physiological functions of FMRFamide-like peptides (FLPs) in crustaceans. *Microscopy Research and Technique* 60:313–324 DOI 10.1002/jemt.10270.
- Montgomery SH, Ott SR. 2015. Brain composition in *Godyris zavaleta*, a diurnal butterfly, Reflects an increased reliance on olfactory information. *Journal of Comparative Neurology* 523:869–891 DOI 10.1002/cne.23711.
- Nässel DR. 1993. Neuropeptides in the insect brain: a review. *Cell and Tissue Research* 273:1–29 DOI 10.1007/BF00304608.
- Nässel DR, Homberg U. 2006. Neuropeptides in interneurons of the insect brain. *Cell and Tissue Research* 326:1–24 DOI 10.1007/s00441-006-0210-8.
- Ng PKL, Guinot D, Davie PJF. 2008. Systema Brachyurorum: Part I. An annotated checklist of extant brachyuran crabs of the world. *The Raffles Bulletin of Zoology* 17:1–286.
- Orchard M. 2012. *Crabs of Christmas island*. Christmas Island: Christmas Island Natural History Association.

- Ott SR. 2008.** Confocal microscopy in large insect brains: zinc–formaldehyde fixation improves synapsin immunostaining and preservation of morphology in whole-mounts. *Journal of Neuroscience Methods* 172:220–230 DOI [10.1016/j.jneumeth.2008.04.031](https://doi.org/10.1016/j.jneumeth.2008.04.031).
- Polanska MA, Tuchina O, Agricola H, Hansson BS, Harzsch S. 2012.** Neuropeptide complexity in the crustacean central olfactory pathway: immunolocalization of A-type allatostatins and RFamide-like peptides in the brain of a terrestrial hermit crab. *Molecular Brain* 5:1–17 DOI [10.1186/1756-6606-5-29](https://doi.org/10.1186/1756-6606-5-29).
- Polanska M, Yasuda A, Harzsch S. 2007.** Immunolocalisation of crustacean-SIFamide in the median brain and eyestalk neuropils of the marbled crayfish. *Cell and Tissue Research* 330:331–344 DOI [10.1007/s00441-007-0473-8](https://doi.org/10.1007/s00441-007-0473-8).
- Powers LW, Bliss DE. 1983.** Terrestrial adaptations. In: Vernberg FJ, Vernberg WB, eds. *The biology of crustacea*. New York: Academic Press, 272–333.
- Price DA, Greenberg MJ. 1989.** The hunting of the FaRPs: the distribution of FMRFamide-related peptides. *The Biological Bulletin* 177:198–205 DOI [10.2307/1541933](https://doi.org/10.2307/1541933).
- Reidenbach MA, Koehl MAR. 2011.** The spatial and temporal patterns of odors sampled by lobsters and crabs in a turbulent plume. *The Journal of Experimental Biology* 214:3138–3153 DOI [10.1242/jeb.057547](https://doi.org/10.1242/jeb.057547).
- Richter S, Loesel R, Purschke G, Schmidt-Rhaesa A, Scholtz G, Stach T, Vogt L, Wanninger A, Brenneis G, Döring C, Faller S, Fritsch M, Grobe P, Heuer CM, Kaul S, Möller OS, Müller CHG, Rieger V, Rothe BH, Stegner MEJ, Harzsch S. 2010.** Invertebrate neurophylogeny: suggested terms and definitions for a neuroanatomical glossary. *Frontiers in Zoology* 7:1–49 DOI [10.1186/1742-9994-7-29](https://doi.org/10.1186/1742-9994-7-29).
- Rittschof D, Sutherland JP. 1986.** Field studies on chemically mediated behavior in land hermit crabs: volatile and nonvolatile odors. *Journal of Chemical Ecology* 12:1273–1284 DOI [10.1007/BF01012347](https://doi.org/10.1007/BF01012347).
- Rospars JP, Hildebrand JG. 2000.** Sexually dimorphic and isomorphic glomeruli in the antennal lobes of the sphinx moth *Manduca sexta*. *Chemical Senses* 25:119–129 DOI [10.1093/chemse/25.2.119](https://doi.org/10.1093/chemse/25.2.119).
- Sandeman DC. 1967.** The vascular circulation in the brain, optic lobes and thoracic ganglia of the crab *Carcinus*. *Proceedings of the Royal Society of London B: Biological Sciences* 168:82–90 DOI [10.1098/rspb.1967.0052](https://doi.org/10.1098/rspb.1967.0052).
- Sandeman DC, Luff SE. 1973.** The structural organization of glomerular neuropile in the olfactory and accessory lobes of an Australian freshwater crayfish, *Cherax destructor*. *Zeitschrift für Zellforschung und Mikroskopische Anatomie* 142:37–61 DOI [10.1007/BF00306703](https://doi.org/10.1007/BF00306703).
- Sandeman DC, Sandeman RE, Derby CD, Schmidt M. 1992.** Morphology of the brain of crayfish, crabs, and spiny lobsters: a common nomenclature for homologous structures. *The Biological Bulletin* 183:304–326 DOI [10.2307/1542217](https://doi.org/10.2307/1542217).
- Sandeman DC, Scholtz G, Sandeman RE. 1993.** Brain evolution in decapod crustacea. *Journal of Experimental Zoology* 265:112–133 DOI [10.1002/jez.1402650204](https://doi.org/10.1002/jez.1402650204).



- Schachtner J, Schmidt M, Homberg U. 2005.** Organization and evolutionary trends of primary olfactory brain centers in tetraconata (Crustacea+ Hexapoda). *Arthropod Structure & Development* **34**:257–299 DOI [10.1016/j.asd.2005.04.003](https://doi.org/10.1016/j.asd.2005.04.003).
- Schmidt M. 2015.** Malacostraca. In: Schmidt-Rhaesa A, Harzsch S, Purschke G, eds. *Structure and evolution of invertebrate nervous systems*. Oxford: Oxford University Press (in press).
- Schmidt M, Ache BW. 1997.** Immunocytochemical analysis of glomerular regionalization and neuronal diversity in the olfactory deutocerebrum of the spiny lobster. *Cell and Tissue Research* **287**:541–563 DOI [10.1007/s004410050778](https://doi.org/10.1007/s004410050778).
- Schmidt M, Mellon D. 2011.** Neuronal processing of chemical information in crustaceans. In: Breithaupt T, Thiel M, eds. *Chemical communication in crustaceans*. New York: Springer, 123–147.
- Scholtz G, Richter S. 1995.** Phylogenetic systematics of the reptantian Decapoda (Crustacea, Malacostraca). *Zoological Journal of the Linnean Society* **113**:289–328 DOI [10.1111/j.1096-3642.1995.tb00936.x](https://doi.org/10.1111/j.1096-3642.1995.tb00936.x).
- Schubart CD, Cannicci S, Vannini M, Fratini S. 2006.** Molecular phylogeny of grapsoid crabs (Decapoda, Brachyura) and allies based on two mitochondrial genes and a proposal for refraining from current superfamily classification. *Journal of Zoological Systematics and Evolutionary Research* **44**:193–199 DOI [10.1111/j.1439-0469.2006.00354.x](https://doi.org/10.1111/j.1439-0469.2006.00354.x).
- Schubart CD, Cuesta JA, Diesel R, Felder DL. 2000.** Molecular phylogeny, taxonomy, and evolution of nonmarine lineages within the American grapsoid crabs (Crustacea: Brachyura). *Molecular Phylogenetics and Evolution* **15**:179–190 DOI [10.1006/mpev.1999.0754](https://doi.org/10.1006/mpev.1999.0754).
- Schubart CD, Cuesta JA, Felder DL. 2002.** Glyptograpsidae, a New Brachyuran Family from Central America: larval and adult morphology, and a molecular phylogeny of the Grapsoidea. *Journal of Crustacean Biology* **22**:28–44 DOI [10.1163/20021975-99990206](https://doi.org/10.1163/20021975-99990206).
- Schubart CD, Diesel R, Hedges SB. 1998.** Rapid evolution to terrestrial life in Jamaican crabs. *Nature* **393**:363–365 DOI [10.1038/30724](https://doi.org/10.1038/30724).
- Skiebe P. 1999.** Allatostatin-like immunoreactivity in the stomatogastric nervous system and the pericardial organs of the crab *Cancer pagurus*, the lobster *Homarus americanus*, and the crayfish *Cherax destructor* and *Procambarus clarkii*. *The Journal of Comparative Neurology* **403**:85–105 DOI [10.1002/\(SICI\)1096-9861\(19990105\)403:1<85::AID-CNE7>3.0.CO;2-9](https://doi.org/10.1002/(SICI)1096-9861(19990105)403:1<85::AID-CNE7>3.0.CO;2-9).
- Snow PJ. 1973.** Ultrastructure of the aesthetasc hairs of the littoral decapod, *Paragrapsus gaimardii*. *Cell and Tissue Research* **138**:489–502.
- Sombke A, Harzsch S. 2015.** Immunolocalization of histamine in the optic neuropils of *Scutigera coleoptrata* (Myriapoda: Chilopoda) reveals the basal organization of visual systems in Mandibulata. *Neuroscience Letters* **594**:111–116 DOI [10.1016/j.neulet.2015.03.029](https://doi.org/10.1016/j.neulet.2015.03.029).



- Sombke A, Harzsch S, Hansson BS. 2011.** Organization of deutocerebral neuropils and olfactory behavior in the centipede *Scutigera coleoptrata* (Linnaeus, 1758) (Myriapoda: Chilopoda). *Chemical Senses* **36**:43–61 DOI [10.1093/chemse/bjq096](https://doi.org/10.1093/chemse/bjq096).
- Spencer M, Linberg KA. 1986.** Ultrastructure of aesthetasc innervation and external morphology of the lateral antennule setae of the spiny lobster *Panulirus interruptus* (Randall). *Cell and Tissue Research* **245**:69–80 DOI [10.1007/BF00218088](https://doi.org/10.1007/BF00218088).
- Spiller WG. 1898.** A contribution to the study of secondary degeneration following cerebral lesions. *The Journal of Nervous and Mental Disease* **25**:1–19 DOI [10.1097/00005053-189801000-00001](https://doi.org/10.1097/00005053-189801000-00001).
- Stay B, Tobe SS. 2007.** The role of allatostatins in juvenile hormone synthesis in insects and crustaceans. *Annual Review of Entomology* **52**:277–299 DOI [10.1146/annurev.ento.51.110104.151050](https://doi.org/10.1146/annurev.ento.51.110104.151050).
- Stay B, Tobe SS, Bendena WG. 1995.** Allatostatins: identification, primary structures, functions and distribution. *Advances in Insect Physiology* **25**:267–337 DOI [10.1016/S0065-2806\(08\)60066-1](https://doi.org/10.1016/S0065-2806(08)60066-1).
- Stensmyr MC, Erland S, Hallberg E, Wallén R, Greenaway P, Hansson BS. 2005.** Insect-like olfactory adaptations in the terrestrial giant robber crab. *Current Biology* **15**:116–121 DOI [10.1016/j.cub.2004.12.069](https://doi.org/10.1016/j.cub.2004.12.069).
- Števíč Z. 1971.** The main features of brachyuran evolution. *Systematic Zoology* **20**:331–340 DOI [10.2307/2412345](https://doi.org/10.2307/2412345).
- Strausfeld NJ. 2012.** *Arthropod brains: evolution, functional elegance, and historical significance*. Cambridge: Belknap Press of Harvard University Press.
- Streinzer M, Kelber C, Pfabigan S, Kleineidam CJ, Spaethe J. 2013.** Sexual dimorphism in the olfactory system of a solitary and a eusocial bee species. *Journal of Comparative Neurology* **521**:2742–2755 DOI [10.1002/cne.23312](https://doi.org/10.1002/cne.23312).
- Sullivan JM, Benton JL, Sandeman DC, Beltz BS. 2007.** Adult neurogenesis: a common strategy across diverse species. *The Journal of Comparative Neurology* **500**:574–584 DOI [10.1002/cne.21187](https://doi.org/10.1002/cne.21187).
- Sztarker J, Strausfeld NJ, Andrew D, Tomsic D. 2009.** Neural organization of first optic neuropils in the littoral crab *Hemigrapsus oregonensis* and the semiterrestrial species *Chasmagnathus granulatus*. *The Journal of Comparative Neurology* **513**:129–150 DOI [10.1002/cne.21942](https://doi.org/10.1002/cne.21942).
- Sztarker J, Strausfeld NJ, Tomsic D. 2005.** Organization of optic lobes that support motion detection in a semiterrestrial crab. *The Journal of Comparative Neurology* **493**:396–411 DOI [10.1002/cne.20755](https://doi.org/10.1002/cne.20755).
- Techa S, Chung JS. 2015.** Ecdysteroids regulate the levels of molt-inhibiting hormone (MIH) expression in the blue crab, *Callinectes sapidus*. *PLoS ONE* **10**:e0117278 DOI [10.1371/journal.pone.0117278](https://doi.org/10.1371/journal.pone.0117278).
- Thacker RW. 1994.** Volatile shell-investigation cues of land hermit crabs: effect of shell fit, detection of cues from other hermit crab species, and cue isolation. *Journal of Chemical Ecology* **20**:1457–1482 DOI [10.1007/BF02059873](https://doi.org/10.1007/BF02059873).

- Thacker RW. 1996.** Food choices of land hermit crabs (*Coenobita compressus* H. Milne Edwards) depend on past experience. *Journal of Experimental Marine Biology and Ecology* **199**:179–191 DOI [10.1016/0022-0981\(95\)00192-1](https://doi.org/10.1016/0022-0981(95)00192-1).
- Thacker RW. 1998.** Avoidance of recently eaten foods by land hermit crabs, *Coenobita compressus*. *Animal Behaviour* **55**:485–496 DOI [10.1006/anbe.1997.0621](https://doi.org/10.1006/anbe.1997.0621).
- Thiel M, Breithaupt T. 2011.** Chemical communication in crustaceans: research challenges for the twenty-first century. In: Breithaupt T, Thiel M, eds. *Chemical communication in crustaceans*. New York: Springer, 3–22.
- Tierney AJ, Thompson CS, Dunham DW. 1986.** Fine structure of aesthetasc chemoreceptors in the crayfish *Orconectes propinquus*. *Canadian Journal of Zoology* **64**:392–399 DOI [10.1139/z86-061](https://doi.org/10.1139/z86-061).
- Tsang LM, Schubart CD, Ah Yong ST, Lai JCY, Au EYC, Chan T-Y, Ng PKL, Chu KH. 2014.** Evolutionary history of true crabs (Crustacea: Decapoda: Brachyura) and the origin of freshwater crabs. *Molecular Biology and Evolution* **31**:1173–1187 DOI [10.1093/molbev/msu068](https://doi.org/10.1093/molbev/msu068).
- Tsvileneva VA, Titova VA, Kvashina TV. 1985.** Brain topography of the shore crab *Hemigrapsus sanguineus*. *Journal of Evolutionary Biochemistry and Physiology* **21**:394–400.
- Tuchina O, Groh KC, Talarico G, Müller CHG, Wielsch N, Hupfer Y, Svatoš A, Grosse-Wilde E, Hansson BS. 2014.** Morphology and histochemistry of the aesthetasc-associated epidermal glands in terrestrial hermit crabs of the genus *Coenobita* (Decapoda: Paguroidea). *PLoS ONE* **9**:e96430 DOI [10.1371/journal.pone.0096430](https://doi.org/10.1371/journal.pone.0096430).
- Tuchina O, Koczan S, Harzsch S, Rybak J, Wolff G, Strausfeld NJ, Hansson BS. 2015.** Central projections of antennular chemosensory and mechanosensory afferents in the brain of the terrestrial hermit crab (*Coenobita clypeatus*; Coenobitidae, Anomura). *Frontiers in Neuroanatomy* **9**:1–13 DOI [10.3389/fnana.2015.00094](https://doi.org/10.3389/fnana.2015.00094).
- Utting M, Agricola HJ, Sandeman RE, Sandeman DC. 2000.** Central complex in the brain of crayfish and its possible homology with that of insects. *The Journal of Comparative Neurology* **416**:245–261 DOI [10.1002/\(SICI\)1096-9861\(200011\)416:2<245::AID-CNE9>3.0.CO;2-A](https://doi.org/10.1002/(SICI)1096-9861(200011)416:2<245::AID-CNE9>3.0.CO;2-A).
- Vannini M, Ferretti J. 1997.** Chemoreception in two species of terrestrial hermit crabs (Decapoda: Coenobitidae). *Journal of Crustacean Biology* **17**:33–37 DOI [10.2307/1549459](https://doi.org/10.2307/1549459).
- Vilpoux K, Sandeman RE, Harzsch S. 2006.** Early embryonic development of the central nervous system in the Australian crayfish and the Marbled crayfish (Marmorkrebs). *Development Genes and Evolution* **216**:209–223 DOI [10.1007/s00427-005-0055-2](https://doi.org/10.1007/s00427-005-0055-2).
- Vitzthum H, Homberg U, Agricola H. 1996.** Distribution of Dip-allatostatin I-like immunoreactivity in the brain of the locust *Schistocerca gregaria* with detailed analysis of immunostaining in the central complex. *The Journal of Comparative Neurology* **369**:419–437 DOI [10.1002/\(SICI\)1096-9861\(199606\)369:3<419::AID-CNE7>3.0.CO;2-8](https://doi.org/10.1002/(SICI)1096-9861(199606)369:3<419::AID-CNE7>3.0.CO;2-8).

- Von Hagen H-O. 1962.** Freilandstudien zur sexual und Fortpflanzungs-biologie von *Uca tangeri* in Andalusien. *Zeitschrift für Morphologie und Ökologie der Tiere* **51**:611–725 DOI [10.1007/BF00431425](https://doi.org/10.1007/BF00431425).
- Walls ML, Layne JE. 2009.** Direct evidence for distance measurement *via* flexible stride integration in the fiddler crab. *Current Biology* **19**:25–29 DOI [10.1016/j.cub.2008.10.069](https://doi.org/10.1016/j.cub.2008.10.069).
- Wasserthal LT, Seibt U. 1976.** Fine structure, function and cleaning of the aesthetascs on the antennules of the shrimp *Hymenocera picta* (Gnathophyllidae). *Zeitschrift für Tierpsychologie* **42**:186–199.
- Weissburg MJ. 2011.** Waterborne chemical communication: stimulus dispersal dynamics and orientation strategies in crustaceans. In: Breithaupt T, Thiel M, eds. *Chemical communication in crustaceans*. New York: Springer, 63–83.
- Wolcott TG. 1988.** Ecology. In: Burggren WW, McMahon BR, eds. *Biology of the land crabs*. Cambridge: Cambridge University Press, 55–96.
- Wolff GH, Harzsch S, Hansson BS, Brown S, Strausfeld NJ. 2012.** Neuronal organization of the hemiellipsoid body of the land hermit crab, *Coenobita clypeatus*: correspondence with the mushroom body ground pattern. *The Journal of Comparative Neurology* **520**:2824–2846 DOI [10.1002/cne.23059](https://doi.org/10.1002/cne.23059).
- Wolff GH, Strausfeld NJ. 2015.** Genealogical correspondence of mushroom bodies across invertebrate phyla. *Current Biology* **25**:38–44 DOI [10.1016/j.cub.2014.10.049](https://doi.org/10.1016/j.cub.2014.10.049).
- Wyatt TD. 2011.** Pheromones and behavior. In: Breithaupt T, Thiel M, eds. *Chemical communication in crustaceans*. New York: Springer, 23–38.
- Yasuda-Kamatani Y, Yasuda A. 2006.** Characteristic expression patterns of allatostatin-like peptide, FMRFamide-related peptide, orcokinin, tachykinin-related peptide, and SIFamide in the olfactory system of crayfish *Procambarus clarkii*. *The Journal of Comparative Neurology* **496**:135–147 DOI [10.1002/cne.20903](https://doi.org/10.1002/cne.20903).
- Yin GL, Yang JS, Cao JX, Yang WJ. 2006.** Molecular cloning and characterization of FGLamide allatostatin gene from the prawn, *Macrobrachium rosenbergii*. *Peptides* **27**:1241–1250 DOI [10.1016/j.peptides.2005.11.015](https://doi.org/10.1016/j.peptides.2005.11.015).
- Zajac J, Mollereau C. 2006.** RFamide peptides. Editorial introduction. *Peptides* **27**:941–942 DOI [10.1016/j.peptides.2005.12.005](https://doi.org/10.1016/j.peptides.2005.12.005).
- Zeil J, Al-Mutairi M. 1996.** The variation of resolution and of ommatidial dimensions in the compound eyes of the fiddler crab *Uca lactea annulipes* (Ocypodidae, Brachyura, Decapoda). *The Journal of Experimental Biology* **199**:1569–1577.
- Zeil J, Hemmi JM. 2006.** The visual ecology of fiddler crabs. *Journal of Comparative Physiology A: Neuroethology, Sensory, Neural, and Behavioral Physiology* **192**:1–25 DOI [10.1007/s00359-005-0048-7](https://doi.org/10.1007/s00359-005-0048-7).
- Zeil J, Hemmi JM. 2014.** Path integration, vision, and decision-making in fiddler crabs. In: Derby CD, Thiel M, eds. *Nervous systems and control of behavior. The natural history of the crustacea*, New York: Oxford University Press, 484–508.