

Poster presentation

Open Access

## A survey of dynamical complexity in a mean-field nonlinear model of human EEG

Federico Frascoli\*<sup>1</sup>, Lennaert Van Veen<sup>2</sup>, Ingo Bojak<sup>3</sup>, Mathew P Dafilis<sup>1</sup> and David TJ Liley

Address: <sup>1</sup>Brain Sciences Institute (BSI), Swinburne University of Technology, P.O. Box 218, Victoria 3122, Australia, <sup>2</sup>Department of Mathematics and Statistics, Faculty of Arts and Sciences, Concordia University, 1455 de Maisonneuve Blvd. W., H3G 1M8 Montreal, Quebec, Canada and <sup>3</sup>Donders Institute for Brain, Cognition and Behaviour, Centre for Neuroscience, Radboud University Nijmegen (Medical Centre), P.O. Box 9101/126, 6500 HB Nijmegen, The Netherlands

Email: David TJ Liley - dliley@swin.edu.au

\* Corresponding author

from Eighteenth Annual Computational Neuroscience Meeting: CNS\*2009  
Berlin, Germany. 18–23 July 2009

Published: 13 July 2009

BMC Neuroscience 2009, **10**(Suppl 1):P285 doi:10.1186/1471-2202-10-S1-P285

This abstract is available from: <http://www.biomedcentral.com/1471-2202/10/S1/P285>

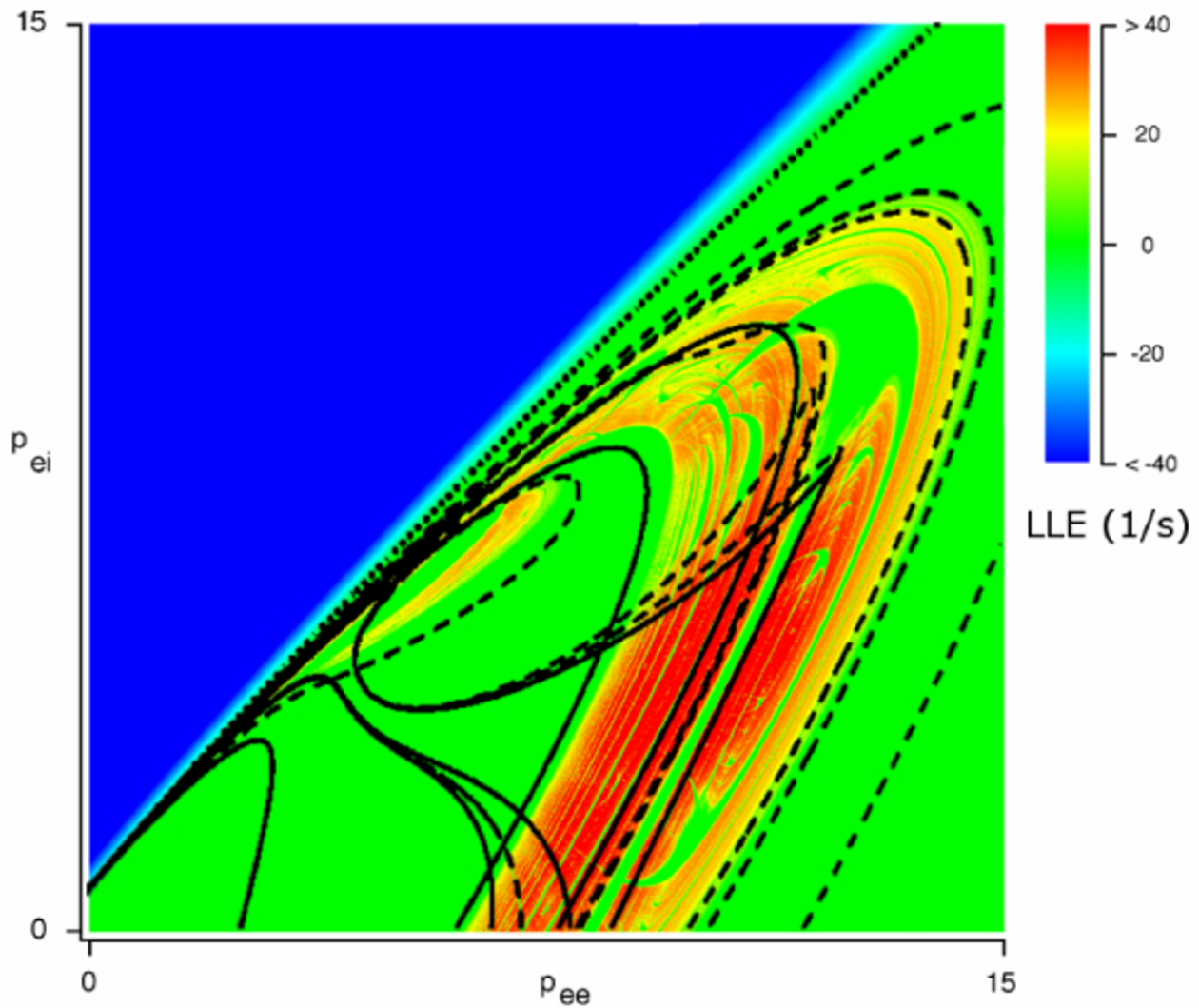
© 2009 Frascoli et al; licensee BioMed Central Ltd.

A recently proposed mean-field mesoscopic theory of mammalian cortex dynamics describes the salient features of rhythmic electrical activity in the cerebral macrocolumn, with the use of inhibitory and excitatory neuronal populations [1]. This model is capable of producing a range of important human EEG (electroencephalogram) features such as the alpha rhythm, the 40 Hz activity thought to be associated with conscious awareness [2] and the changes in EEG spectral power associated with general anesthetic effect (e.g. the so-called "biphasic" response) [3]. From the point of view of nonlinear dynamics, the model entails a vast parameter space within which multistability, pseudoperiodic regimes, different routes to chaos, fat fractals and resonances occur for a range of physiologically relevant parameter values, giving rise to a multitude of rich and elaborate bifurcation scenarios. Examples of these are the Shilnikov saddle-node bifurcation (see Figure 1 and [4]), the homoclinic doubling cascade and different kinds of resonances. The origin and the character of these complex behaviors and their relevance for EEG activity are illustrated.

### References

1. Liley DTJ, Cadusch PJ, Dafilis MP: **A spatially continuous mean field theory of electrocortical activity.** *Network: Comput Neural Syst* 2002, **13**:67-113.
2. Bojak I, Liley DTJ: **Self-organized 40 Hz synchronization in a physiological theory of EEG.** *Neurocomp* 2007, **70**:2085-2090.

3. Bojak I, Liley DTJ: **Modeling the effects of anesthesia on the electroencephalogram.** *Phys Rev E* 2005, **71**: 041902(1–22)
4. van Veen L, Liley DTJ: **Chaos via Shilnikov's saddle-node bifurcation in a theory of the electroencephalogram.** *Phys Rev Lett* 2006, **97**: 208101(1–4)



**Figure 1**  
**The largest Lyapunov exponent in color reproduced from [4], with superimposed two-parameter continuation of saddle-node and period-doubling bifurcations for periodic orbits of a mesoscopic mean field EEG model. The leftmost wedge of chaos terminates for negative values of the exterior forcings  $p_{ee}$  and  $p_{ei}$ .**

Publish with **BioMed Central** and every scientist can read your work free of charge

*"BioMed Central will be the most significant development for disseminating the results of biomedical research in our lifetime."*

Sir Paul Nurse, Cancer Research UK

Your research papers will be:

- available free of charge to the entire biomedical community
- peer reviewed and published immediately upon acceptance
- cited in PubMed and archived on PubMed Central
- yours — you keep the copyright

Submit your manuscript here:  
[http://www.biomedcentral.com/info/publishing\\_adv.asp](http://www.biomedcentral.com/info/publishing_adv.asp)

