

Research Article

Boundary Conditions in 2D Numerical and 3D Exact Models for Cylindrical Bending Analysis of Functionally Graded Structures

F. Tornabene,¹ S. Brischetto,² N. Fantuzzi,¹ and M. Baccocchi¹

¹DICAM Department, University of Bologna, Bologna, Italy

²Department of Mechanical and Aerospace Engineering, Politecnico di Torino, Torino, Italy

Correspondence should be addressed to N. Fantuzzi; nicholas.fantuzzi@unibo.it

Received 8 August 2016; Revised 19 October 2016; Accepted 26 October 2016

Academic Editor: Yuri S. Karinski

Copyright © 2016 F. Tornabene et al. This is an open access article distributed under the Creative Commons Attribution License, which permits unrestricted use, distribution, and reproduction in any medium, provided the original work is properly cited.

The cylindrical bending condition for structural models is very common in the literature because it allows an incisive and simple verification of the proposed plate and shell models. In the present paper, 2D numerical approaches (the Generalized Differential Quadrature (GDQ) and the finite element (FE) methods) are compared with an exact 3D shell solution in the case of free vibrations of functionally graded material (FGM) plates and shells. The first 18 vibration modes carried out through the 3D exact model are compared with the frequencies obtained via the 2D numerical models. All the 18 frequencies obtained via the 3D exact model are computed when the structures have simply supported boundary conditions for all the edges. If the same boundary conditions are used in the 2D numerical models, some modes are missed. Some of these missed modes can be obtained modifying the boundary conditions imposing free edges through the direction perpendicular to the direction of cylindrical bending. However, some modes cannot be calculated via the 2D numerical models even when the boundary conditions are modified because the cylindrical bending requirements cannot be imposed for numerical solutions in the curvilinear edges by definition. These features are investigated in the present paper for different geometries (plates, cylinders, and cylindrical shells), types of FGM law, lamination sequences, and thickness ratios.

1. Introduction

The cylindrical bending conditions have a great diffusion in the open literature because they allow an immediate and simple verification of several plate and shell models. Some of these plate models which use the cylindrical bending hypotheses for the verifications are discussed in the following. Chen et al. [1] used the state-space method for the investigation of a simply supported cross-ply laminated plate embedding viscous interfaces in cylindrical bending. Chen and Lee [2, 3] also used the state-space method for the cylindrical bending analysis of simply supported angle-ply laminated plates with interfacial damage and simply supported angle-ply laminated plates subjected to a static load. An experimental three-roller cylindrical bending investigation for plates was proposed by Gandhi and Raval [4]; the comparison with analytical solutions was also conducted. Oral and Darendeliler [5] proposed a methodology for the design of plate-forming dies in cylindrical bending using

optimization techniques which allow the cost reductions of die production. Considering the large deflection of a thin beam, under certain conditions, the solution of the plate problem is not unique [6]. The bending-gradient plate theory, seen as an extension of the Reissner-Mindlin plate model, was used in [7] for the cylindrical bending analysis of laminated plates. Nimbolkar and Jain [8] used the same Reissner-Mindlin plate theory for the cylindrical bending investigation of composite and elastic plates subjected to the mechanical transverse load under plain strain conditions. Sayyad and Ghugal [9] investigated laminated plates using a n th order shear deformation theory under cylindrical bending requirements. Some of the most important three-dimensional exact plate solutions were proposed by Pagano [10] and Pagano and Wang [11] for the cylindrical bending analysis of multilayered composite plates. Saeedi et al. [12] developed a 2D plate layer-wise model for the analysis of delamination growth in multilayered plates subjected to cylindrical bending loadings. This method is alternative to

the finite element method. Shu and Soldatos [13] developed a new stress analysis method to investigate the stress distributions in angle-ply laminated plates when subjected to cylindrical bending. Further cylindrical bending analyses for plates consider the inclusion of functionally graded material (FGM) layers; typical examples are [14, 15]. In [16–21], the cylindrical bending analysis was proposed for multilayered plates embedding piezoelectric and/or FGM layers. The cylindrical bending analysis for multilayered composite and/or piezoelectric plates proposed in [22–24] includes the application of thermal loads. The cylindrical bending analysis of shells is not so diffused in the literature. Few cases can be found, and they concern the cylindrical bending conditions imposed to cylindrical shells. Simply supported angle-ply laminated cylindrical shells in cylindrical bending were investigated in [25] using the state-space formulation for the bending and free vibration analyses. A three-dimensional piezoelectric model based on the perturbation method for the cylindrical bending electromechanical load applications to cylindrical shells was proposed in [26]. Yan et al. [27] analyzed the cylindrical bending behavior of a simply supported angle-ply laminated cylindrical shell embedding viscoelastic interfaces.

The authors proposed the free vibration analysis of simply supported FGM plates and shells in [28, 29] where the 3D exact shell model was compared with several 2D numerical models such as the classical finite element (FE) one and the classical and refined Generalized Differential Quadrature (GDQ) methods. Similar comparisons were also proposed in [30, 31] for one-layered and multilayered isotropic, composite, and sandwich plates and shells. In such analyses, the considered geometries are plates, cylinders, and cylindrical and spherical shell panels. Low and high frequencies were calculated for thick and thin simply supported plates and shells with constant radii of curvature. The comparison between the 2D numerical methods (FE and GDQ solutions) and the 3D exact solution is possible only if an exhaustive vibration mode investigation is conducted. This investigation allows understanding how to make the comparison between numerical and analytical methods. This comparison is not easy because the exact 3D solution gives infinite vibration modes for all the possible combinations of half-wave numbers (m, n) and 2D numerical models propose a finite number of vibration modes because they use a finite number of degrees of freedom in the plane and in the thickness direction. It should be underlined that the 3D exact model is able to investigate any kind of geometric ratio (from extremely thick to very thin structures); nevertheless it can model only simply supported boundary conditions and it can investigate structures wherein constant radii of curvature are present. The 2D numerical approaches are more versatile (in terms of boundary conditions and type of structure analyzed); however they can be used only for moderately thick structures. It is obvious that thick structures can be analyzed only when higher order displacement fields are set in such 2D models. Since commercial codes implement only through the thickness linear theories, they can investigate accurately only moderately thick shells. The method proposed in [28–31] to compare the 3D exact shell model and the 2D numerical

models is based on the calculation of the frequencies via the 2D numerical code and their appropriate visualization of the relative vibration modes via the GDQ and/or FE method. After this visualization, the evaluation of the 3D exact frequencies is possible by means of the appropriate imposition of half-wave numbers obtained from the vibration mode study. From this procedure, it is clear how the 3D analysis could give some frequencies that cannot be calculated by the 2D numerical codes. This feature was not the aim of the papers [28–31], and for this reason these missed frequencies are investigated in the present new work for FGM structures.

This new analysis is conducted calculating the first 18 frequencies for one-layered and sandwich FGM plates and shells by means of the 3D exact model. The half-wave numbers are combined along the two directions α and β in the plane considering the simply supported boundary conditions for the four edges. In these first 18 frequencies there are some modes that cannot be calculated by means of the 2D numerical models because they are not solutions of the employed mathematical model with the four simply supported edges. In general, these missed modes by the 2D numerical models correspond to the cylindrical bending conditions. These conditions in the 3D exact solution mean that one of the two half-wave numbers is equal to zero through an edge direction with a transverse displacement different from zero along the perpendicular edge. These particular frequencies are not solutions of the 2D numerical models built with the four edges which are simply supported, but a different mathematical model must be defined where two edges are simply supported and the other two are free. These conditions allow the cylindrical bending, with the transverse displacement through two parallel edges different from zero, in numerical models in order to obtain the missed frequencies and modes. This condition is possible only when the zero half-wave number is imposed through a rectilinear side because the half-wave number equals zero in the curvilinear edge does not mean that all the derivatives in the that direction are zero because of the presence of the curvature. This last condition is in conflict with the definition of cylindrical bending.

The 3D exact shell model is described and validated in Section 2. It uses the equilibrium equations written using the generic curvilinear orthogonal coordinates. Such equations are solved in closed form by means of simply supported boundary conditions. The differential equations along z , written in layer-wise form, are solved using the exponential matrix method (also known as transfer matrix method or the state-space approach). The 2D FE and GDQ models are proposed and opportunely validated in Section 3. The 2D FE model makes use of a very common commercial finite element code. The 2D GDQ models give results by means of an in-house academic software and they are based on classical and refined shell models. The results about the comparisons between 3D exact and 2D numerical models, with the remark about the boundary conditions, are shown Section 4. Section 5 gives the main conclusions.

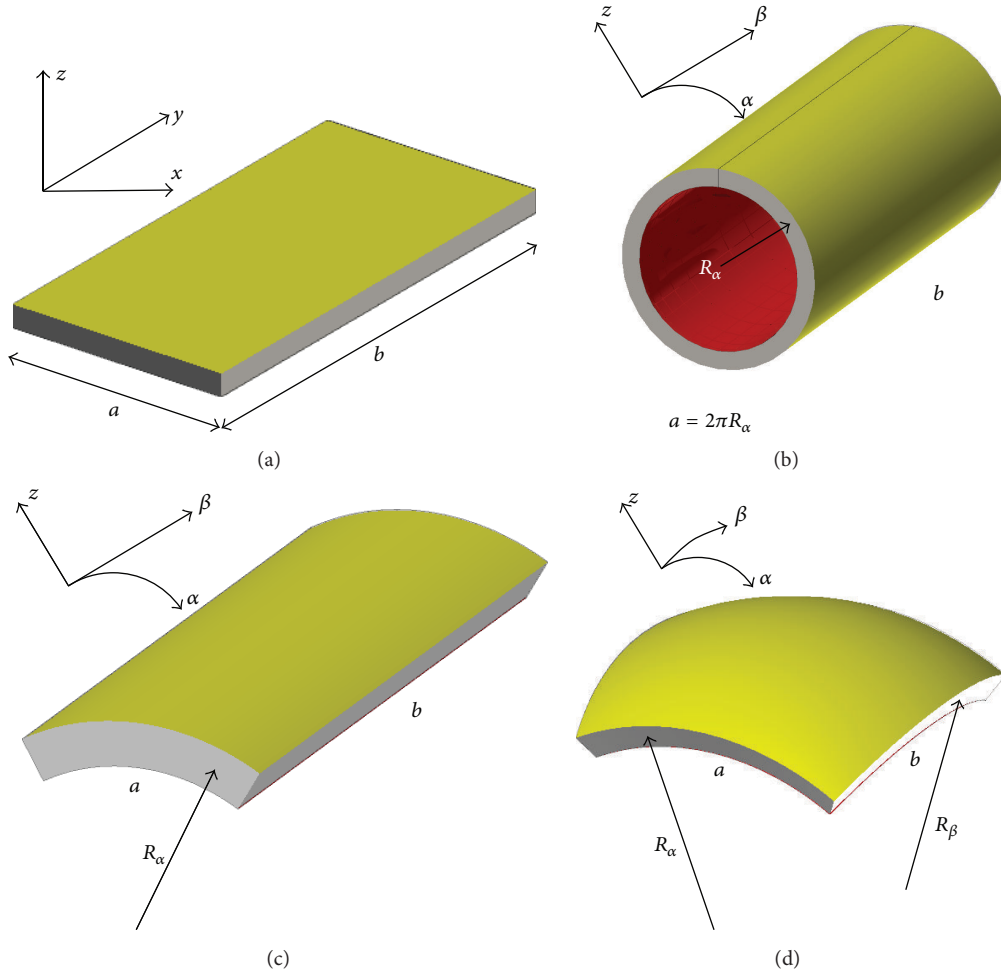


FIGURE 1: Geometries of plates and shells with constant radii of curvature and their local reference system.

2. Exact Solution of a 3D Shell Model

The three-dimensional exact shell model employed for the comparisons proposed in Section 4 has been elaborated in [32–40] for the free frequency analyses of single-layered and multilayered isotropic, orthotropic, composite, FGM, and sandwich plates and shells with constant radii of curvature and for the free vibrations of single- and double-walled carbon nanotubes including van der Waals interactions. The equilibrium equations proposed in the general orthogonal curvilinear coordinate system (α, β, z) are valid for both plates and shells with constant radii of curvature. For the sake of clarity, the plates and shells geometries within their local coordinate systems are depicted in Figure 1. The exact form of these equations is obtained using simply supported boundary conditions, while the differential equations in z are solved by means of the exponential matrix method (also known as transfer matrix method or the state-space approach).

Considering spherical shells with constant radii of curvature R_α and R_β and embedding N_L classical or FGM layers,

the differential equations of equilibrium for the free vibration analysis written for a generic k layer are

$$\begin{aligned}
 & H_\beta \frac{\partial \sigma_{\alpha\alpha}^k}{\partial \alpha} + H_\alpha \frac{\partial \sigma_{\alpha\beta}^k}{\partial \beta} + H_\alpha H_\beta \frac{\partial \sigma_{\alpha z}^k}{\partial z} \\
 & + \left(\frac{2H_\beta}{R_\alpha} + \frac{H_\alpha}{R_\beta} \right) \sigma_{\alpha z}^k = \rho^k H_\alpha H_\beta \ddot{u}^k, \\
 & H_\beta \frac{\partial \sigma_{\alpha\beta}^k}{\partial \alpha} + H_\alpha \frac{\partial \sigma_{\beta\beta}^k}{\partial \beta} + H_\alpha H_\beta \frac{\partial \sigma_{\beta z}^k}{\partial z} \\
 & + \left(\frac{2H_\alpha}{R_\beta} + \frac{H_\beta}{R_\alpha} \right) \sigma_{\beta z}^k = \rho^k H_\alpha H_\beta \ddot{v}^k, \\
 & H_\beta \frac{\partial \sigma_{\alpha z}^k}{\partial \alpha} + H_\alpha \frac{\partial \sigma_{\beta z}^k}{\partial \beta} + H_\alpha H_\beta \frac{\partial \sigma_{zz}^k}{\partial z} - \frac{H_\beta}{R_\alpha} \sigma_{\alpha\alpha}^k - \frac{H_\alpha}{R_\beta} \sigma_{\beta\beta}^k \\
 & + \left(\frac{H_\beta}{R_\alpha} + \frac{H_\alpha}{R_\beta} \right) \sigma_{zz}^k = \rho^k H_\alpha H_\beta \ddot{w}^k.
 \end{aligned} \tag{1}$$

It is remarked that this set of equations is valid only for spherical shells wherein $R_\alpha = R_\beta = R$, because for doubly curved shells with variable radii of curvature such equations take a different form. The authors decided to keep such system with the two radii of curvature distinct because it will be much easier to understand the cylindrical bending effect for plates and shells starting from a general point of view.

In the case of shell geometries and/or FGM layers, each physical layer k must be divided in an opportune number of q mathematical layers to approximate the shell curvature and/or the FGM law through the thickness direction z . The index j indicates the total mathematical layers obtained from the subdivision of each k layer in q mathematical layers ($j = k \times q$). The parametric coefficients for shells with constant radii of curvature can be written as

$$\begin{aligned} H_\alpha &= \left(1 + \frac{z}{R_\alpha}\right), \\ H_\beta &= \left(1 + \frac{z}{R_\beta}\right), \\ H_z &= 1. \end{aligned} \quad (2)$$

A closed form solution for simply supported shells and plates can be developed by writing harmonic displacements as

$$\begin{aligned} u^j(\alpha, \beta, z, t) &= U^j(z) e^{i\omega t} \cos(\bar{\alpha}\alpha) \sin(\bar{\beta}\beta), \\ v^j(\alpha, \beta, z, t) &= V^j(z) e^{i\omega t} \sin(\bar{\alpha}\alpha) \cos(\bar{\beta}\beta), \\ w^j(\alpha, \beta, z, t) &= W^j(z) e^{i\omega t} \sin(\bar{\alpha}\alpha) \sin(\bar{\beta}\beta), \end{aligned} \quad (3)$$

where $U^j(z)$, $V^j(z)$, and $W^j(z)$ indicate the displacement amplitudes in α , β , and z directions, respectively. i indicates the imaginary unit. $\omega = 2\pi f$ is the circular frequency where f is the frequency value in Hz. t is the symbol for the time. In the coefficients $\bar{\alpha} = m\pi/a$ and $\bar{\beta} = n\pi/b$, m and n are the half-wave numbers and a and b are the shell dimensions in α and β directions, respectively (all these quantities are evaluated on the midsurface Ω_0). ρ^j is the mass density. $(\sigma_{\alpha\alpha}^j, \sigma_{\beta\beta}^j, \sigma_{zz}^j, \sigma_{\beta z}^j, \sigma_{\alpha z}^j, \sigma_{\alpha\beta}^j)$ are the six stress components and \ddot{u}^j , \ddot{v}^j , and \ddot{w}^j are the second temporal derivative of the three displacement components. R_α and R_β indicate the radii of curvature defined with respect the reference surface Ω_0 of the whole multilayered plate or shell. H_α and H_β proposed in (2) vary with continuity through the thickness direction of the multilayered structure. Therefore, they depend on the thickness coordinate z . The reference surface Ω_0 of the structure is defined as the locus of points which are positioned midway between the external surfaces. Displacement components are indicated as u , v , and w in α , β , and z directions, respectively.

The final system in closed form is developed substituting (3) and constitutive and geometrical equations (which are not

here given for the sake of brevity but they can be found in detail in [32]) in (1):

$$\begin{aligned} &\left(-\frac{C_{55}^j H_\beta^j}{H_\alpha^j R_\alpha^2} - \frac{C_{55}^j}{R_\alpha R_\beta} - \bar{\alpha}^2 \frac{C_{11}^j H_\beta^j}{H_\alpha^j} - \bar{\beta}^2 \frac{C_{66}^j H_\alpha^j}{H_\beta^j} \right. \\ &\quad \left. + \rho^j H_\alpha^j H_\beta^j \omega^2\right) U^j + (-\bar{\alpha}\bar{\beta}C_{12}^j - \bar{\alpha}\bar{\beta}C_{66}^j) V^j \\ &\quad + \left(\bar{\alpha} \frac{C_{11}^j H_\beta^j}{H_\alpha^j R_\alpha} + \bar{\alpha} \frac{C_{12}^j}{R_\beta} + \bar{\alpha} \frac{C_{55}^j H_\beta^j}{H_\alpha^j R_\alpha} + \bar{\alpha} \frac{C_{55}^j}{R_\beta}\right) W^j \\ &\quad + \left(\frac{C_{55}^j H_\beta^j}{R_\alpha} + \frac{C_{55}^j H_\alpha^j}{R_\beta}\right) U_{,z}^j + (\bar{\alpha}C_{13}^j H_\beta^j + \bar{\alpha}C_{55}^j H_\beta^j) \\ &\quad \cdot W_{,z}^j + (C_{55}^j H_\alpha^j H_\beta^j) U_{,zz}^j = 0, \\ &(-\bar{\alpha}\bar{\beta}C_{66}^j - \bar{\alpha}\bar{\beta}C_{12}^j) U^j + \left(-\frac{C_{44}^j H_\alpha^j}{H_\beta^j R_\beta^2} - \frac{C_{44}^j}{R_\alpha R_\beta} \right. \\ &\quad \left. - \bar{\alpha}^2 \frac{C_{66}^j H_\beta^j}{H_\alpha^j} - \bar{\beta}^2 \frac{C_{22}^j H_\alpha^j}{H_\beta^j} + \rho^j H_\alpha^j H_\beta^j \omega^2\right) V^j \\ &\quad + \left(\frac{-C_{44}^j H_\alpha^j}{\bar{\beta} H_\beta^j R_\beta} + \bar{\beta} \frac{C_{44}^j}{R_\alpha} + \bar{\beta} \frac{C_{22}^j H_\alpha^j}{H_\beta^j R_\beta} + \bar{\beta} \frac{C_{12}^j}{R_\alpha}\right) W^j \\ &\quad + \left(\frac{C_{44}^j H_\alpha^j}{R_\beta} + \frac{C_{44}^j H_\beta^j}{R_\alpha}\right) V_{,z}^j + (\bar{\beta}C_{44}^j H_\alpha^j + \bar{\beta}C_{23}^j H_\alpha^j) \\ &\quad \cdot W_{,z}^j + (C_{44}^j H_\alpha^j H_\beta^j) V_{,zz}^j = 0, \\ &\left(\bar{\alpha} \frac{C_{55}^j H_\beta^j}{H_\alpha^j R_\alpha} - \bar{\alpha} \frac{C_{13}^j}{R_\beta} + \bar{\alpha} \frac{C_{11}^j H_\beta^j}{H_\alpha^j R_\alpha} + \bar{\alpha} \frac{C_{12}^j}{R_\beta}\right) U^j \\ &\quad + \left(\bar{\beta} \frac{C_{44}^j H_\alpha^j}{H_\beta^j R_\beta} - \bar{\beta} \frac{C_{23}^j}{R_\alpha} + \bar{\beta} \frac{C_{22}^j H_\alpha^j}{H_\beta^j R_\beta} + \bar{\beta} \frac{C_{12}^j}{R_\alpha}\right) V^j \\ &\quad + \left(\frac{C_{13}^j}{R_\alpha R_\beta} + \frac{C_{23}^j}{R_\alpha R_\beta} - \frac{C_{11}^j H_\beta^j}{H_\alpha^j R_\alpha^2} - \frac{2C_{12}^j}{R_\alpha R_\beta} - \frac{C_{22}^j H_\alpha^j}{H_\beta^j R_\beta^2} \right. \\ &\quad \left. - \bar{\alpha}^2 \frac{C_{55}^j H_\beta^j}{H_\alpha^j} - \bar{\beta}^2 \frac{C_{44}^j H_\alpha^j}{H_\beta^j} + \rho^j H_\alpha^j H_\beta^j \omega^2\right) W^j \\ &\quad + (-\bar{\alpha}C_{55}^j H_\beta^j - \bar{\alpha}C_{13}^j H_\beta^j) U_{,z}^j + (-\bar{\beta}C_{44}^j H_\alpha^j \\ &\quad - \bar{\beta}C_{23}^j H_\alpha^j) V_{,z}^j + \left(\frac{C_{33}^j H_\beta^j}{R_\alpha} + \frac{C_{33}^j H_\alpha^j}{R_\beta}\right) W_{,z}^j \\ &\quad + (C_{33}^j H_\alpha^j H_\beta^j) W_{,zz}^j = 0. \end{aligned} \quad (4)$$

The cylindrical bending requirements for analytical methods are obtained choosing one of the two half-wave numbers which equals zero. This condition means $\bar{\alpha} = m\pi/a = 0$ or $\bar{\beta} = n\pi/b = 0$ which allows the derivatives made in a particular direction (α or β) which equals zero too. This mathematical condition means that each section in the cylindrical bending direction has always the same behavior.

It is obvious that the cylindrical bending effect is proper for cylindrical structures only. However, the authors started the present treatise from the governing equations (1) of spherical shell structures because one of the aims of the present contribution is to underline which are the extra terms (related to the curvature) that do not allow having the structure to be in cylindrical bending conditions.

The compact form of (4) has been elaborated in detail in [32]. The final version is here proposed:

$$\mathbf{D}^j \frac{\partial \mathbf{U}^j}{\partial z} = \mathbf{A}^j \mathbf{U}^j, \quad (5)$$

where $\partial \mathbf{U}^j / \partial z = \mathbf{U}^{j'}$ and $\mathbf{U}^j = [U^j \ V^j \ W^j \ U^{j'} \ V^{j'} \ W^{j'}]$. Equation (5) is rewritten as

$$\mathbf{D}^j \mathbf{U}^{j'} = \mathbf{A}^j \mathbf{U}^j, \quad (6)$$

$$\mathbf{U}^{j'} = \mathbf{D}^{j-1} \mathbf{A}^j \mathbf{U}^j, \quad (7)$$

$$\mathbf{U}^{j'} = \mathbf{A}^{j*} \mathbf{U}^j, \quad (8)$$

with $\mathbf{A}^{j*} = \mathbf{D}^{j-1} \mathbf{A}^j$.

The exponential matrix method (also known as transfer matrix method or the state-space approach) is employed for the solution of (8) (details are given in [32]):

$$\mathbf{U}^j(z^j) = \exp(\mathbf{A}^{j*} z^j) \mathbf{U}^j(0) \quad \text{with } z^j \in [0, h^j], \quad (9)$$

where z^j is the thickness coordinate for the j mathematical layer with values from 0 at the bottom to h^j at the top. The exponential matrix is calculated using $z^j = h^j$ for each j mathematical layer:

$$\begin{aligned} \mathbf{A}^{j**} &= \exp(\mathbf{A}^{j*} h^j) \\ &= \mathbf{I} + \mathbf{A}^{j*} h^j + \frac{\mathbf{A}^{j*2}}{2!} h^{j2} + \frac{\mathbf{A}^{j*3}}{3!} h^{j3} + \dots \\ &\quad + \frac{\mathbf{A}^{j*N}}{N!} h^{jN}, \end{aligned} \quad (10)$$

where \mathbf{I} indicates the 6×6 identity matrix. The expansion used for the exponential matrix in (10) has a fast convergence and it is not time consuming from the computational point of view.

$j = M$ mathematical layers are used to approximate the shell curvature and/or the FGM law through the thickness. $M - 1$ transfer matrices must be defined by means of the interlaminar continuity conditions of displacements and transverse shear/normal stresses at each interface. The closed form solution for plates or shells is obtained using simply

supported boundary conditions and free stress conditions at the top and at the bottom surfaces. The above conditions allow the following final system:

$$\mathbf{E} \mathbf{U}^1(0) = \mathbf{0}, \quad (11)$$

and the 6×6 matrix \mathbf{E} does not change, independently of the number of layers M , even if a layer-wise approach is applied. $\mathbf{U}^1(0)$ is the vector \mathbf{U} defined at the bottom of the whole multilayered shell or plate (first layer 1 with $z^1 = 0$). All the steps and details, here omitted for the sake of brevity, can be found in [32–40] where the proposed exact 3D shell model has been elaborated and tested for the first time for several applications. Several validations for the 3D exact shell model have been shown in [32–40]. For this reason, the model is now used with confidence for the results and comparisons proposed in Section 4.

The nontrivial solution of $\mathbf{U}^1(0)$ in (11) allows conducting the free vibration analysis imposing the zero determinant of matrix \mathbf{E} :

$$\det[\mathbf{E}] = 0, \quad (12)$$

Equation (12) is used to find the roots of an higher order polynomial written in $\lambda = \omega^2$. The imposition of a couple of (m, n) allows a certain number of circular frequencies $\omega = 2\pi f$ (from 1 to ∞) to be calculated. This number of frequencies depends on the order N used in each exponential matrix \mathbf{A}^{j**} and the number M of mathematical layers employed for the shell curvature and/or the FGM law approximations. The results shown in [32–40] confirm that $N = 3$ for the exponential matrix and $M = 100$ for the mathematical layers are appropriate to always calculate the correct free frequencies for each structure, lamination sequence, number of layers, material, FGM law, and thickness value.

3. 2D Finite Element Analysis and 2D Generalized Differential Quadrature Models

The 3D exact natural frequencies are compared with two numerical 2D solutions given by a weak and a strong formulation. The former is a classic 2D finite element (FE) model carried out through the commercial software Strand7. The latter is a recent widespread technique known as Generalized Differential Quadrature (GDQ) method [41]. Details related to convergence and accuracy of these techniques can be found in the works [29–31]. It is noted that the FE solution employs a classic linear theory, known also as Reissner-Mindlin theory, with a linear rotation of the fibers through the shell thickness. The present GDQ solution exploits higher order theories with a general expansion through the thickness of the structure. This general approach falls within the framework of the unified theories because several structural models can be obtained via the repetition of a fundamental nucleus. Another difference between the GDQ applications and the FE ones is that the former includes the curvature effects and the rotary inertias in its formulation.

The 2D kinematic hypothesis [42–50] considers the following expansion of the degrees of freedom:

$$\mathbf{U} = \sum_{\tau=0}^{N_c+1} \mathbf{F}_\tau \mathbf{u}^{(\tau)}, \quad (13)$$

where \mathbf{U} represents the vector of the 3D displacement components, which is function of (α, β, z) , and \mathbf{u}^τ is the vector of the displacement parameters, function of (α, β) , which depends on the free index τ . Therefore \mathbf{u}^τ lays on the midsurface of the shell [42]. The matrix $\mathbf{F}_{\tau(ij)} = \delta_{ij} F_\tau$ (for $i, j = 1, 2, 3$) contains the so-called thickness functions where δ is the Kronecker delta function. The thickness functions describe how the displacement parameters characterize the solution through the thickness. They can have any form of any smooth function of z ; however the classic form of these functions is the power function. Thus, $F_\tau = z^\tau$ can be 1 ($\tau = 0$), z ($\tau = 1$), z^2 ($\tau = 2$), z^3 ($\tau = 3$), and so on. Please note that according to the mathematical background of the present Unified Formulation the index $N_c + 1$ is reserved to the (optional) zigzag effect. Since the aim of the present paper is to investigate the cylindrical bending effect for functionally graded plates and cylindrical panels, the following numerical applications will consider a fixed value of $N_c = 3$, so that $\tau = 0, 1, 2, 3$. This choice is justified by the fact that third order theories are sufficient, with a reasonably limited number of degrees of freedom, to obtain accurate solutions when compared to 3D shell models [42–50]. For multilayered structures, such as sandwich configurations, the zigzag function must be added into the formulation. Once again, as shown in (13), the zigzag function is embedded at the end of the expansion with the exponent $N_c + 1$. When such effect is neglected the sum of (13) stops at N_c .

The same theory used for the FE solution can be carried out in the GDQ method setting $\tau = 0, 1$ and $N_c = 1$; however it has been shown in other recent works that the strong form approaches led to more accurate results with respect to the FE ones [46, 48].

The relation between generalized strains $\boldsymbol{\epsilon}^{(\tau)}$ and displacements $\mathbf{u}^{(\tau)}$ can be set as

$$\boldsymbol{\epsilon}^{(\tau)} = \mathbf{D}_\Omega \mathbf{u}^{(\tau)} \quad \text{for } \tau = 0, 1, 2, \dots, N_c, N_c + 1, \quad (14)$$

where \mathbf{D}_Ω is a differential operator explicitly defined in [42]. The present constitutive material model is linear and elastic; therefore for a general k th lamina, Hooke's law can be applied:

$$\boldsymbol{\sigma}^{(k)} = \overline{\mathbf{C}}^{(k)} \boldsymbol{\epsilon}^{(k)}, \quad (15)$$

where $\boldsymbol{\sigma}^{(k)}$ is the vector containing the stress components and $\overline{\mathbf{C}}^{(k)}$ represents the constitutive matrix for each k th ply [42] of the structure. Each component of the constitutive matrix is indicated by the symbol $\overline{C}_{\xi\eta}^{(k)}$ and it is valid in the curvilinear reference system $O'\alpha\beta z$ of the reference geometry. These coefficients are evaluated with the application of the transformation matrix [42].

The stress resultants are the terms which correspond to the punctual 3D stresses of the 3D doubly curved solid. Their definition can be achieved by developing the Hamilton principle for the present structural theory [42]:

$$\mathbf{S}^{(\tau)} = \sum_{k=1}^{N_L} \int_{z_k}^{z_{k+1}} (\mathbf{Z}^{(\tau)})^T \boldsymbol{\sigma}^{(\tau)} H_\alpha H_\beta dz \quad (16)$$

$$\text{for } \tau = 0, 1, 2, \dots, N_c, N_c + 1,$$

where $\mathbf{Z}^{(\tau)}$ is a 6×9 matrix containing the thickness functions F_τ and the curvature coefficients H_α and H_β ; the definition of such matrix with some other details can be found in [42]. $\mathbf{S}^{(\tau)}$ include the stress resultants as a function of the order τ .

The definition of (16) can be rewritten as

$$\mathbf{S}^{(\tau)} = \sum_{s=0}^{N_c+1} \mathbf{A}^{(\tau s)} \boldsymbol{\epsilon}^{(s)} \quad \text{for } \tau = 0, 1, 2, \dots, N_c, N_c + 1, \quad (17)$$

which is a function of generalized strains of order $s \boldsymbol{\epsilon}^{(s)}$.

Note that the so-called elastic coefficients are defined as

$$\mathbf{A}^{(\tau s)} = \sum_{k=1}^{N_L} \int_{z_k}^{z_{k+1}} (\mathbf{Z}^{(\tau)})^T \overline{\mathbf{C}}^{(k)} \mathbf{Z}^{(s)} H_\alpha H_\beta dz, \quad (18)$$

and they can be carried out by the following integral expressions:

$$A_{\xi\eta(\rho\zeta)}^{(\tau s)} = \sum_{k=1}^{N_L} \int_{z_k}^{z_{k+1}} \overline{C}_{\xi\eta}^{(k)} z^s z^\tau \frac{H_\alpha H_\beta}{H_\alpha^0 H_\beta^0} dz$$

$$A_{\xi\eta(\rho\zeta)}^{(\bar{\tau} s)} = \sum_{k=1}^{N_L} \int_{z_k}^{z_{k+1}} \overline{C}_{\xi\eta}^{(k)} z^s \tau z^{\tau-1} \frac{H_\alpha H_\beta}{H_\alpha^0 H_\beta^0} dz$$

$$A_{\xi\eta(\rho\zeta)}^{(\tau \bar{s})} = \sum_{k=1}^{N_L} \int_{z_k}^{z_{k+1}} \overline{C}_{\xi\eta}^{(k)} s z^{s-1} z^\tau \frac{H_\alpha H_\beta}{H_\alpha^0 H_\beta^0} dz$$

$$A_{\xi\eta(\varrho\zeta)}^{(\tilde{\tau}\tilde{s})} = \sum_{k=1}^{N_L} \int_{z_k}^{z_{k+1}} \overline{C}_{\xi\eta}^{(k)} s z^{s-1} \tau z^{\tau-1} \frac{H_\alpha H_\beta}{H_\alpha^\varrho H_\beta^\zeta} dz$$

for $\tau, s = 0, 1, 2, \dots, N_c, N_c + 1$, $\xi, \eta = 1, 2, 3, 4, 5, 6$, $\varrho, \zeta = 0, 1, 2$.

(19)

It is recalled that the exponent $N_c + 1$ is reserved for the Murakami function; otherwise this order is neglected. The subscripts $\tilde{\tau}$ and \tilde{s} indicate the derivatives of the thickness functions F_τ and F_s with respect to z . The subscripts ϱ and ζ are the exponents of the quantities H_α and H_β , whereas ξ and η are the indices of the material constants $\overline{C}_{\xi\eta}^{(k)}$ for the k th ply [42–49]. Note that $\overline{C}_{\xi\eta}^{(k)}$, H_α , and H_β are quantities that depend on the thickness z . Therefore, the integrals of (19) cannot be computed analytically. The present solution for solving such integrals is to employ a numerical integration algorithm. In particular, the so-called Generalized Integral Quadrature (GIQ) method is utilized. For an accurate evaluation of the integrals, 51 points per layer are considered in the integration.

The Hamilton principle supplies for the dynamic equilibrium equations and the correspondent boundary conditions. In detail, the fundamental nucleus of three motion equations takes the form

$$\mathbf{D}_\Omega^* \mathbf{S}^{(\tau)} = \sum_{s=0}^{N_c+1} \mathbf{M}^{(\tau s)} \ddot{\mathbf{u}}^{(s)} \quad (20)$$

for $\tau = 0, 1, 2, \dots, N_c, N_c + 1$,

where \mathbf{D}_Ω^* is the equilibrium operator and $\mathbf{M}^{(\tau s)}$ is the inertial matrix. Their explicit expressions have been presented in a previous authors' paper [42].

Combining the kinematic equation (14), constitutive equation (17), and the motion equation (20), the fundamental governing system in terms of displacement parameters is carried out:

$$\sum_{s=0}^{N_c+1} \mathbf{L}^{(\tau s)} \mathbf{u}^{(s)} = \sum_{s=0}^{N_c+1} \mathbf{M}^{(\tau s)} \ddot{\mathbf{u}}^{(s)} \quad (21)$$

for $\tau = 0, 1, 2, \dots, N_c, N_c + 1$,

where $\mathbf{L}^{(\tau s)} = \mathbf{D}_\Omega^* \mathbf{A}^{(\tau s)} \mathbf{D}_\Omega$ is the fundamental operator [42].

Boundary conditions must be included for the solution of the differential equations (21). The present paper deals only with free and simply supported boundary conditions. The former is used to reproduce the cylindrical bending conditions considering alternatively one free edge and one simply supported edge. When the four edges are all simply supported, the problem is the same as the ones investigated

in the previous papers [29–31]. Simply supported conditions are

$$\begin{aligned} N_\alpha^{(\tau)} &= 0, \\ u_\beta^{(\tau)} &= u_z^{(\tau)} = 0 \\ \tau &= 0, 1, 2, \dots, N_c, N_c + 1 \text{ at } \alpha = \alpha^0 \text{ or } \alpha = \alpha^1, \beta^0 \leq \beta \leq \beta^1, \\ u_\alpha^{(\tau)} &= 0, \\ N_\beta^{(\tau)} &= 0, \\ u_z^{(\tau)} &= 0 \\ \tau &= 0, 1, 2, \dots, N_c, N_c + 1 \text{ at } \beta = \beta^0 \text{ or } \beta = \beta^1, \alpha^0 \leq \alpha \leq \alpha^1, \end{aligned} \quad (22)$$

Free edge conditions are

$$\begin{aligned} N_\alpha^{(\tau)} &= 0, \\ N_\beta^{(\tau)} &= 0, \\ T_\alpha^{(\tau)} &= 0 \\ \tau &= 0, 1, 2, \dots, N_c, N_c + 1 \text{ at } \alpha = \alpha^0 \text{ or } \alpha = \alpha^1, \beta^0 \leq \beta \leq \beta^1, \\ N_\alpha^{(\tau)} &= 0, \\ N_\beta^{(\tau)} &= 0, \\ T_\beta^{(\tau)} &= 0 \\ \tau &= 0, 1, 2, \dots, N_c, N_c + 1 \text{ at } \beta = \beta^0 \text{ or } \beta = \beta^1, \alpha^0 \leq \alpha \leq \alpha^1. \end{aligned} \quad (23)$$

4. Results

The present section includes some numerical applications for the comparison of the 3D exact shell vibrations with two numerical 2D models. In particular classical simply supported solutions and cylindrical bending (CB) behavior of plates and shells are presented. The following computations focus on plates, circular cylinders, and cylindrical panels due to the fact that the CB effect occurs only when at least two parallel straight edges are present in the structure.

The first case is a square plate ($a = b = 1$ m) with simply supported edges. Two thickness ratios are analyzed: thin $a/h = 100$ and moderately thick $a/h = 20$ structure. The plate is made of a single functionally graded layer ($h_1 = h$) with volume fraction of ceramic (c) phase:

$$V_c(z) = \left(0.5 + \frac{z}{h}\right)^p \quad \text{with } z \in \left[-\frac{h}{2}, \frac{h}{2}\right], \quad (24)$$

TABLE I: One-layered FGM plate with $p = 0.5$. Analytical 3D versus 2D numerical models. Frequency f in Hz.

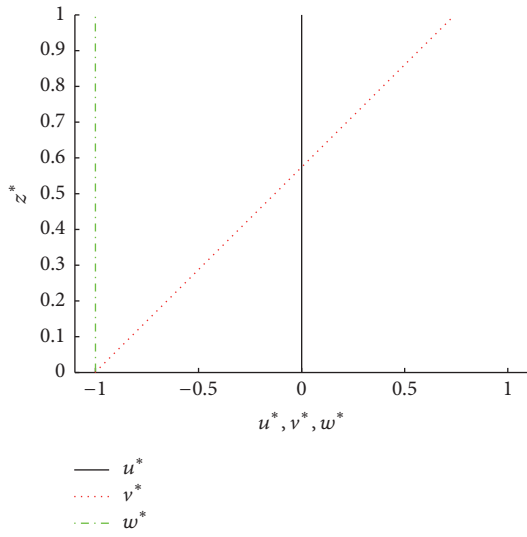
m, n	Mode	3D exact	2D FE	2D FE (CB)	2D GDQ	2D GDQ (CB)
$a/h = 100$						
1, 0	I	40.19	—	39.07	—	39.21
0, 1	I	40.19	—	39.07	—	39.21
1, 1	I	80.37	80.06	—	80.36	—
2, 0	I	160.7	—	158.0	—	158.4
0, 2	I	160.7	—	158.0	—	158.4
2, 1	I	200.8	200.1	—	200.8	—
1, 2	I	200.8	200.1	—	200.8	—
2, 2	I	321.2	320.2	—	321.1	—
3, 0	I	361.3	—	356.8	—	357.7
0, 3	I	361.3	—	356.8	—	357.7
3, 1	I	401.4	400.2	—	401.3	—
1, 3	I	401.4	400.2	—	401.3	—
3, 2	I	521.5	520.2	—	521.5	—
2, 3	I	521.5	520.2	—	521.5	—
4, 0	I	641.6	—	635.4	—	636.5
0, 4	I	641.6	—	635.4	—	636.5
4, 1	I	681.6	680.1	—	681.5	—
1, 4	I	681.6	680.1	—	681.5	—
$a/h = 20$						
1, 0	I	200.2	—	195.1	—	195.1
0, 1	I	200.2	—	195.1	—	195.1
1, 1	I	398.9	399.5	—	398.8	—
2, 0	I	791.6	—	786.4	—	779.7
0, 2	I	791.6	—	786.4	—	779.7
2, 1	I	985.8	995.4	—	985.7	—
1, 2	I	985.8	995.4	—	985.7	—
2, 2	I	1560	1588	—	1560	—
3, 0	I	1749	—	1767	—	1729
0, 3	I	1749	—	1767	—	1729
3, 1	I	1936	1980	—	1936	—
1, 3	I	1936	1980	—	1936	—
3, 2	I	2490	2566	—	2490	—
2, 3	I	2490	2566	—	2490	—
1, 0	II ($w = 0$)	2775	2773	—	2775	—
0, 1	II ($w = 0$)	2775	2773	—	2775	—
4, 0	I	3034	—	3124	—	3007
0, 4	I	3034	—	3124	—	3007

where p is the power exponent which varies the volume fraction of the ceramic component through the thickness. Two limit cases occur for (24): $V_c = 1$ when $p = 0$ and $V_c \rightarrow 0$ when $p = \infty$. In the following computations it is set as $p = 0.5$. Note that the volume fraction function in (24) gives a material which is ceramic (c) rich at the top and metal (m) rich at the bottom of the structure. The mechanical properties (Young modulus and mass density) are given by the theory of mixtures as

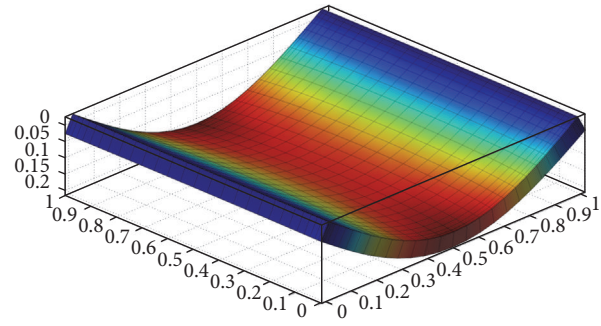
$$\begin{aligned} E(z) &= E_m + (E_c - E_m) V_c, \\ \rho(z) &= \rho_m + (\rho_c - \rho_m) V_c, \end{aligned} \quad (25)$$

where E_m and ρ_m are the elastic modulus and mass density of the metallic phase, respectively. E_c and ρ_c are the corresponding properties of the ceramic phase. Note that in all the following computations the Poisson ratio is considered constant through the thickness; thus $\nu_c = \nu_m = \nu = 0.3$. The two constituents have the following mechanical properties:

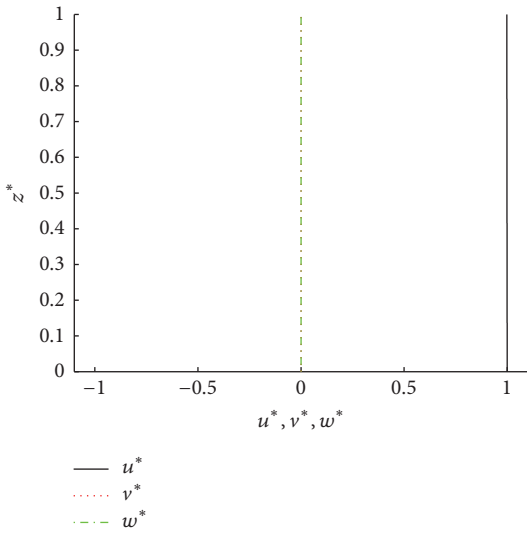
$$\begin{aligned} E_m &= 73 \text{ GPa}, \\ \rho_m &= 2800 \text{ kg/m}^3, \\ E_c &= 380 \text{ GPa}, \\ \rho_c &= 3800 \text{ kg/m}^3. \end{aligned} \quad (26)$$



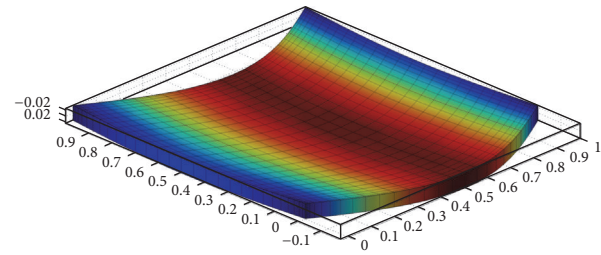
(a) Mode I: (0, 1), 3D



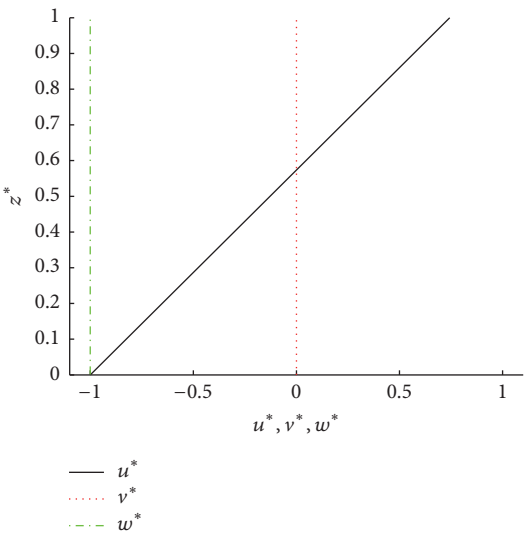
(b) Mode I: (0, 1), 2D



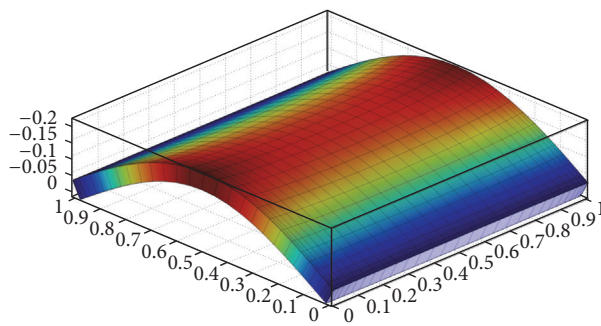
(c) Mode II: ($w = 0$) (0, 1), 3D



(d) Mode II: ($w = 0$) (0, 1), 2D



(e) Mode I: (1, 0), 3D



(f) Mode I: (1, 0), 2D

FIGURE 2: Continued.

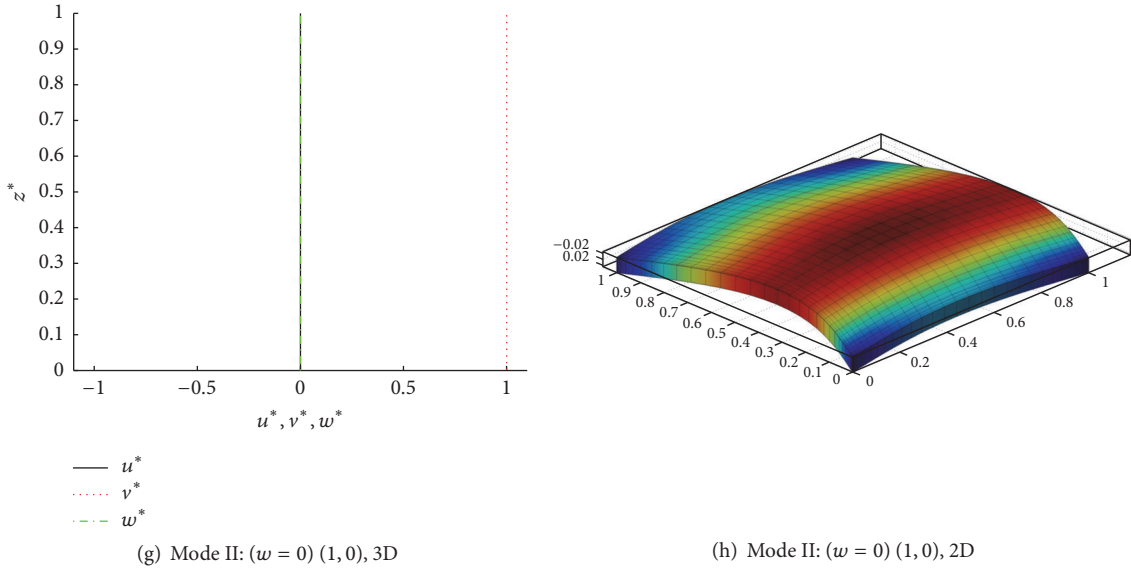
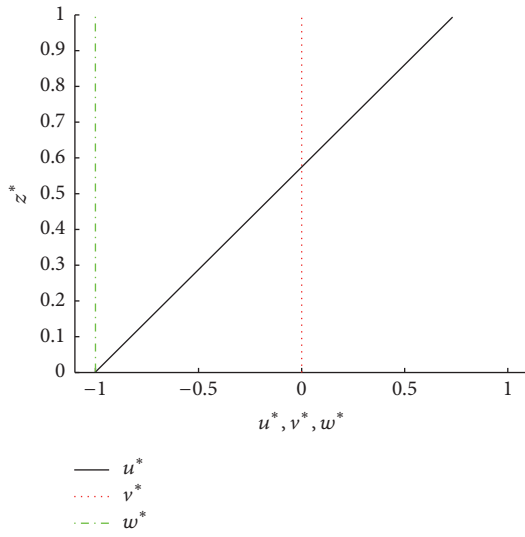


FIGURE 2: Differences between in-plane and cylindrical bending vibration modes for the $a/h = 20$ one-layered FGM plate with $p = 0.5$. 3D modes versus 2D modes.

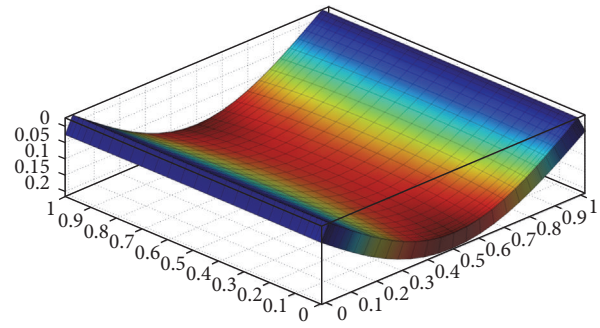
Since the FE commercial software does not have an embedded tool for the computation of functionally graded properties through the thickness, the present FE applications are carried out building a fictitious laminated structure with isotropic plies. In detail, the thickness of the FGM lamina has been divided into 100 fictitious layers and for each layer the corresponding mechanical properties have been computed through (25). The numerical model has been made of a uniform element division of 40×40 Quad8 elements for a total number of 29280 degrees of freedom (dofs). The GDQ solution is computed with a not-uniform Chebyshev-Gauss-Lobatto grid [41] with 31×31 points for both thickness ratios. It is underlined that since a single ply is set, no zigzag function is needed in the computation. It is recalled that the present higher order GDQ model considers a third order expansion with $\tau = 0, 1, 2, 3$, whereas the FE one has a first order model (also known as Reissner-Mindlin model). Table 1 reports the results in terms of natural frequency (Hz), wherein the first column reports the number of half-waves (m, n) of the 3D exact solution. Note that, for a fixed set of half-wave numbers, different mode shapes can occur (indicated by the second column “Mode”). In particular, I indicates the first mode and II indicates the second mode. In the case of in-plane modes, the caption $(w = 0)$ is added to underline that the vibration occurs in the plane and not out of plane. The third column shows all the results for the 3D exact solution, both classical and cylindrical bending (CB) results. It is noted that these frequencies are obtained with a single run of the 3D exact code keeping simply supported boundary conditions for all the four edges of the plate. The other four columns of Table 1 refer to the numerical solutions for simply supported structures and for cylindrical bending conditions (setting two free opposite edges). The cylindrical bending results are indicated by the acronym CB in the same table.

There is a very good agreement among the three solutions when simply supported conditions are considered. On the contrary a small error is observed in cylindrical bending because the actual CB condition is not completely satisfied due to the fact that the plate has a limited dimension in the simply supported direction. This feature can be detected in Figures 2 and 3 because the deformed shapes of the plate in the CB configuration are not properly correct. In fact, the fibers parallel to the supported edges are not parallel among them but there is a curvature effect due to the free boundaries and to the limited length of the plate. On the contrary, the in-plane mode shapes $(w = 0)$, when the plate is simply supported on the four edges, have all the fibers parallel among them also after the deformation. These modes are the results obtained in the 3D solution with $m = 0$ or $n = 0$ combined with $w = 0$. They are not cylindrical bending modes; in fact they can be found with 2D numerical models without modifying the boundary conditions. 3D frequencies with $m = 0$ or $n = 0$ (with w different from 0) are CB modes which can be obtained considering two simply supported edges and two free edges in 2D numerical models.

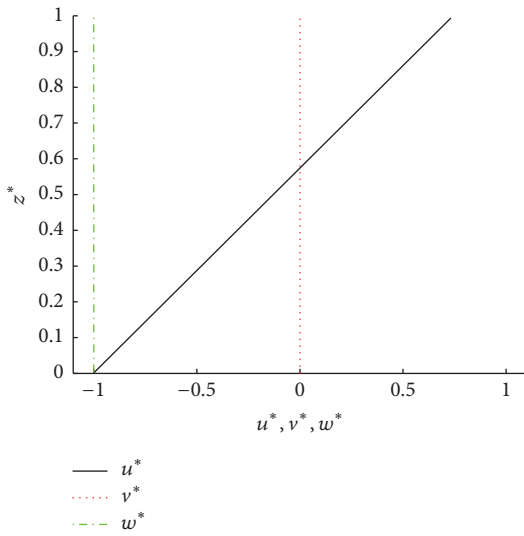
As it is well-known the “perfect” CB would occur when the simply supported direction has an “infinite” length. This cannot be proven numerically, but a trend can be observed modeling different plates in cylindrical bending configuration with different lengths. These analyses are made keeping one side of the plate constant and enlarging the length of the other edge. In the present computations, a is kept constant and $b = L$ varies from 1 to 20. The results of the aforementioned analysis are listed in Table 2 and depicted in Figures 4 and 5. Table 2 includes the numerical values of the first mode shape in cylindrical bending for the 3D exact solution, the 2D FE, and the 2D GDQ models. Figure 4 shows that both GDQ and FE solutions tend to the 3D exact one increasing the length of the simply supported edge. In



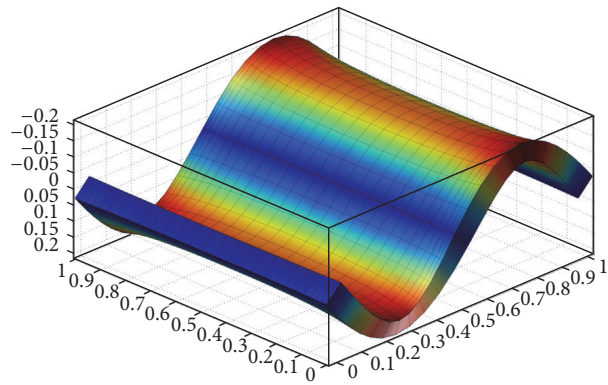
(a) Mode I: (1, 0), 3D



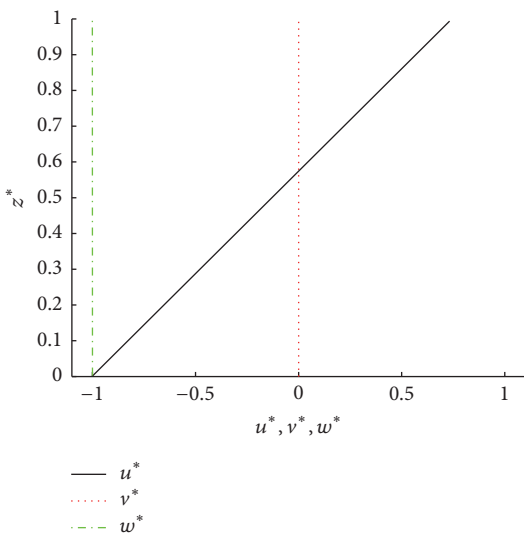
(b) Mode I: (1, 0), 2D



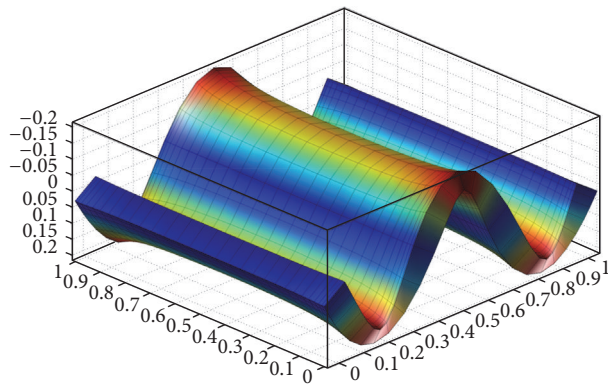
(c) Mode I: (2, 0), 3D



(d) Mode I: (2, 0), 2D

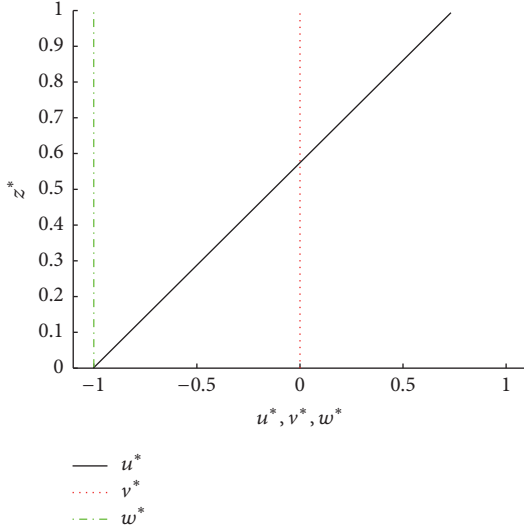


(e) Mode I: (3, 0), 3D

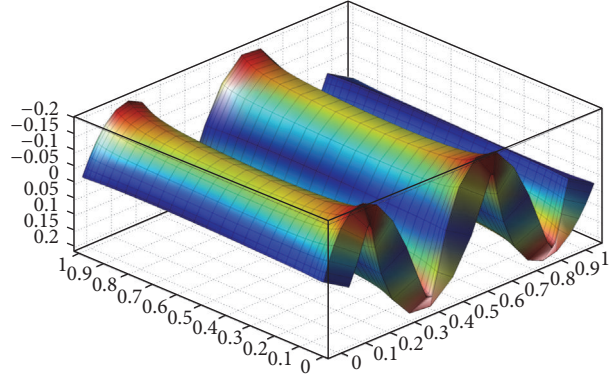


(f) Mode I: (3, 0), 2D

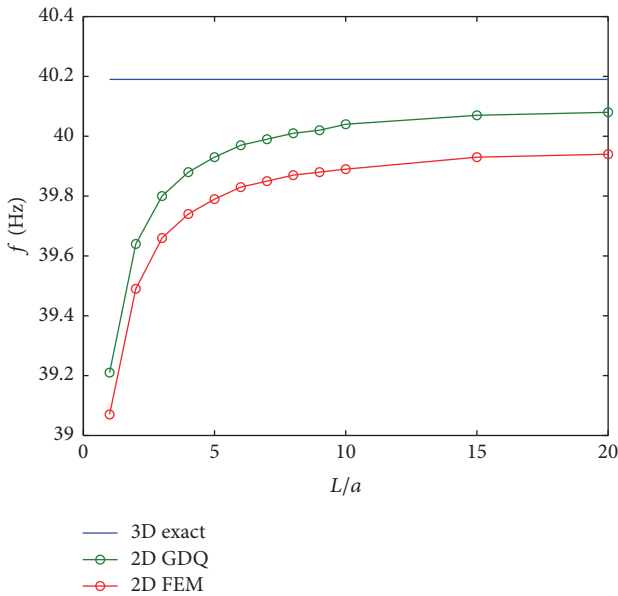
FIGURE 3: Continued.



(g) Mode I: (4, 0), 3D



(h) Mode I: (4, 0), 2D

FIGURE 3: First four cylindrical bending vibration modes for the $a/h = 20$ one-layered FGM plate with $p = 0.5$. 3D modes versus 2D modes.FIGURE 4: First frequency f in Hz for the $a/h = 100$ one-layered FGM plate with $p = 0.5$: convergence of 2D GDQ and 2D FE solutions increasing the length of the simply supported sides.

particular, the GDQ solution is slightly more accurate than the FE one. The 2D GDQ solution is carried out by enlarging the length of one of the sides of the plate and the same number of dofs is kept. On the contrary, the FE model is generated by 40×40 blocks of mesh. In other words, the plate with $L = 2a$ has a mesh of 40×80 , the one with $L = 3a$ has a mesh 40×120 , and so on. When $L = 20a$, the error among the 3D exact and the 2D numerical solutions is very small and this is proven also by the mode shapes of Figure 5, wherein the boundary effect is negligible with respect the length of

the simply supported edges. It must be underlined that it is impossible to completely avoid the boundary effects due to the free edges.

The second example is related to a simply supported cylinder with $R_\alpha = 10$ m, $R_\beta = \infty$, $a = 2\pi R_\alpha$, and $b = 20$ m and thickness ratios $R_\alpha/h = 100$ and $R_\alpha/h = 10$. A one-layered FGM scheme is considered with $h_1 = h$ and the same volume fraction function of (24) for the previous example but setting $p = 2.0$. The present material properties are the same as the flat plate. The FE model has a 20×80 Quad8 mesh with 27966 dofs and the GDQ solution has a 15×51 Chebyshev-Gauss-Lobatto grid. Numerically speaking, compatibility conditions must be enforced on the closing meridian in order to obtain a closed revolution shell [42]. To obtain the CB conditions numerically, the cylinder is modeled completely free and the first 6 rigid mode shapes are neglected and removed from the numerical solution. It is noted that the GDQ model uses a third-order kinematic expansion with no zigzag effect as the previous case, since a one-layer structure has been taken into account. Table 3 reports the results with the same meaning of the symbols seen in Table 1. A very good agreement is observed when the cylinder is simply supported, whereas, when the cylinder is completely free, some small errors can be observed but the numerical solutions follow the 3D exact one.

Results with $n = 0$ and $w \neq 0$ indicate the CB conditions. Such results are obtained by means of 2D numerical models modifying the boundary conditions (see 2D FE(CB) and 2D GDQ(CB) models). The cases $n = 0$ combined with $w = 0$ are not CB conditions and the frequencies can be found without modifying the boundary conditions in the 2D numerical models.

The final test is related to a cylindrical panel with $R_\alpha = 10$ m, $R_\beta = \infty$, $a = \pi/3R_\alpha$, and $b = 20$ m and thickness ratios $R_\alpha/h = 100$ and $R_\alpha/h = 10$. The present shell is a sandwich structure embedding a FGM core with $h_2 = 0.7h$ and two

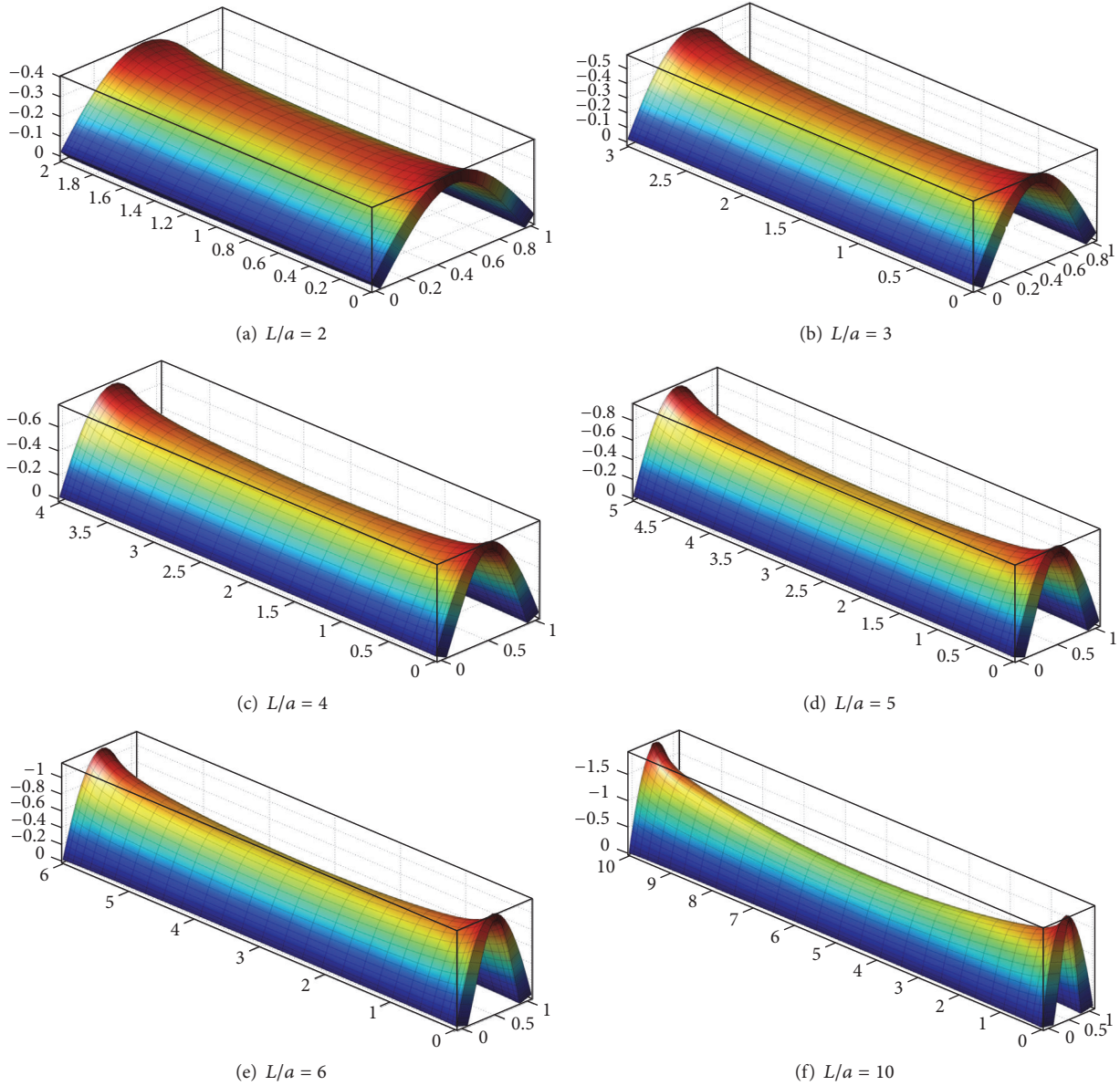


FIGURE 5: First vibration mode for the $a/h = 100$ one-layered FGM plate with $p = 0.5$: 2D GDQ solution and edge effects versus the length of the simply supported sides.

external skins with $h_1 = h_3 = 0.15h$ ($h_1 + h_2 + h_3 = h$). The bottom layer is made of isotropic metallic material and the top layer is made of ceramic material; the mechanical properties are

$$\begin{aligned}
 E_m &= 73 \text{ GPa}, \\
 \rho_m &= 2800 \text{ kg/m}^3, \\
 E_c &= 200 \text{ GPa}, \\
 \rho_c &= 5700 \text{ kg/m}^3.
 \end{aligned}
 \tag{27}$$

The FGM core has a volume fraction function defined as

$$V_c(z) = \left(0.5 + \frac{z}{0.7h}\right)^p \quad \text{with } z \in [-0.35h, 0.35h], \tag{28}$$

where $p = 1.0$ is employed in the present computations. The Poisson ratio is constant ($\nu_c = \nu_m = \nu = 0.3$). Equations (25) are still valid with V_c defined as in (28).

The FE model is made of 40×40 Quad8 elements for total 29280 dofs and the GDQ model has a 31×31 Chebyshev-Gauss-Lobatto grid. Since a sandwich structure is analyzed in the following, a third-order theory with zigzag function is considered in the computations for the GDQ method. The present natural frequencies are reported in Table 4 with the

TABLE 2: First frequency f in Hz for the $a/h = 100$ one-layered FGM plate with $p = 0.5$: convergence of 2D GDQ and 2D FE solutions increasing the length of the simply supported sides.

L/a	1	2	3	4	5	6	8	10	15	20	3D exact
2D GDQ	39.21	39.64	39.80	39.88	39.93	39.97	40.01	40.04	40.07	40.08	40.19
2D FEM	39.07	39.49	39.66	39.74	39.79	39.83	39.87	39.89	39.93	39.94	40.19

TABLE 3: One-layered FGM cylinder with $p = 2.0$. Analytical 3D versus 2D numerical models. Frequency f in Hz.

m, n	Mode	3D exact	2D FE	2D FE (CB)	2D GDQ	2D GDQ (CB)
$R_\alpha/h = 100$						
4, 0	I	0.896	—	0.897	—	0.883
6, 0	I	2.532	—	2.538	—	2.511
8, 0	I	4.854	—	4.867	—	4.819
10, 0	I	7.848	—	7.871	—	7.801
12, 0	I	11.51	—	11.55	—	11.46
10, 1	I	13.56	13.60	—	13.57	—
12, 1	I	14.41	14.49	—	14.45	—
14, 0	I	15.84	—	15.89	—	15.77
8, 1	I	16.38	16.40	—	16.36	—
14, 1	I	17.56	17.67	—	17.63	—
16, 0	I	20.83	—	20.90	—	20.70
16, 1	I	22.07	22.22	—	22.16	—
6, 1	I	24.41	24.42	—	24.38	—
18, 0	I	26.49	—	26.58	—	26.40
14, 2	I	27.42	27.52	—	27.46	—
18, 1	I	27.51	27.72	—	27.63	—
16, 2	I	28.75	28.90	—	28.83	—
12, 2	I	29.21	29.26	—	29.22	—
$R_\alpha/h = 10$						
4, 0	I	8.774	—	9.085	—	8.679
6, 0	I	24.56	—	25.71	—	24.30
6, 1	I	39.78	40.89	—	39.79	—
4, 1	I	43.88	43.57	—	43.88	—
8, 0	I	46.54	—	49.20	—	46.02
8, 1	I	55.75	59.05	—	55.76	—
2, 1	I	72.02	71.01	—	72.02	—
2, 0	I ($w = 0$)	73.22	73.90	—	73.19	—
10, 0	I	74.19	—	79.33	—	73.47
6, 2	I	81.10	82.61	—	81.11	—
10, 1	I	81.89	88.11	—	81.91	—
8, 2	I	87.83	91.73	—	87.85	—
4, 2	I	90.16	90.84	—	90.17	—
12, 0	I	107.1	—	115.9	—	106.1
10, 2	I	108.1	115.5	—	108.1	—
2, 2	I	108.9	110.5	—	108.9	—
12, 1	I	114.2	124.5	—	114.3	—
4, 3	I	126.3	128.6	—	126.3	—

same meaning of the columns seen in the previous cases. In order to achieve the cylindrical bending conditions, the numerical models have the straight edges simply supported and the curved edges as free. Due to the CB definition, it is not possible to achieve CB conditions when $m = 0$

and $n = 1, 2, 3, \dots$ because the cylindrical bending should occur on the curved edge and this is not physically possible because of the variation of displacement components due to the curvature presence. This aspect is indicated as NA (Not Applicable) solution in Table 4. Therefore, this kind of 3D

TABLE 4: Sandwich cylindrical shell panel embedding FGM core with $p = 1.0$. Analytical 3D versus 2D numerical models. Frequency f in Hz.

m, n	Mode	3D exact	2D FE	2D FE (CB)	2D GDQ	2D GDQ (CB)
$R_\alpha/h = 100$						
1, 0	I	1.948	—	1.951	—	1.941
2, 0	I	8.856	—	8.872	—	8.823
2, 1	I	11.04	11.10	—	11.04	—
1, 1	I	18.50	18.73	—	18.50	—
3, 0	I	20.38	—	20.42	—	20.30
3, 1	I	21.16	21.28	—	21.16	—
2, 2	I	22.21	22.42	—	22.21	—
3, 2	I	24.84	24.96	—	24.84	—
3, 3	I	32.35	32.54	—	32.35	—
4, 0	I	36.49	—	36.60	—	36.34
2, 3	I	36.92	37.39	—	36.92	—
4, 1	I	37.14	37.45	—	37.14	—
4, 2	I	39.40	39.65	—	39.41	—
3, 4	I	42.26	42.61	—	42.26	—
4, 3	I	43.78	44.03	—	43.78	—
1, 2	I	45.68	46.64	—	45.68	—
4, 4	I	50.35	50.64	—	50.35	—
2, 4	I	50.40	51.28	—	50.40	—
$R_\alpha/h = 10$						
1, 0	I	19.05	—	19.63	—	18.84
1, 1	I	30.54	31.45	—	30.55	—
1, 2	I	62.09	64.09	—	62.09	—
2, 0	I	83.26	—	88.57	—	82.54
0, 1	I	87.10	—	NA	—	NA
0, 1	II ($w = 0$)	88.20	89.56	—	88.20	—
2, 1	I	88.80	95.31	—	88.82	—
0, 2	I	91.76	—	NA	—	NA
1, 3	I	95.76	99.83	—	95.67	—
0, 3	I	103.6	—	NA	—	NA
2, 2	I	106.6	114.7	—	106.7	—
0, 4	I	129.1	—	NA	—	NA
1, 4	I	133.5	141.3	—	133.5	—
2, 3	I	136.4	147.5	—	136.4	—
1, 0	II ($w = 0$)	166.5	173.8	—	166.5	—
0, 5	I	168.3	—	NA	—	NA
2, 4	I	175.5	191.8	—	175.5	—
0, 2	II ($w = 0$)	176.4	179.1	—	176.4	—

exact solutions cannot be achieved by any numerical model. Once again, solution with $n = 0$ or $m = 0$ combined with $w = 0$ (in-plane modes) can be found with 2D numerical models without modifying the simply supported boundary conditions.

5. Conclusions

The present paper analyzes the cylindrical bending in the free frequency analysis of functionally graded material (FGM) plates and cylindrical shells. This condition is investigated by means of a 3D exact shell model and two different 2D

numerical models, a weak formulation based on classical Finite Elements (FEs) and a strong formulation based on the GDQ method. The cylindrical bending (CB) behavior in the 3D exact shell model can be analyzed using completely simply supported structures and supposing one of the two half-wave numbers equals zero. The numerical models obtain the CB behavior using mixed simply supported and free boundary conditions. It has been demonstrated that the actual cylindrical bending (CB) is possible only with respect to straight edges. The CB natural frequencies of the numerical solutions converge to the 3D exact CB ones if the length of straight simply supported edges is increased up to 20 times

the value of the original edges. The CB conditions are not possible in 2D numerical models when the half-wave number is zero in the curvilinear edge; in this case the modification of boundary conditions does not properly work. In-plane vibration modes with zero transverse displacement combined with $m = 0$ or $n = 0$ cannot be defined as CB frequencies and they can be calculated via 2D numerical models without the modification of the simply supported conditions for the four edges. All the considerations about the cylindrical bending are valid for each geometry (plate, cylinder, and cylindrical shell), lamination scheme, FGM law, and thickness ratio.

Competing Interests

The authors declare that they have no competing interests.

References

- [1] W. Q. Chen, J. B. Cai, and G. R. Ye, "Responses of cross-ply laminates with viscous interfaces in cylindrical bending," *Computer Methods in Applied Mechanics and Engineering*, vol. 194, no. 6–8, pp. 823–835, 2005.
- [2] W. Q. Chen and K. Y. Lee, "Three-dimensional exact analysis of angle-ply laminates in cylindrical bending with interfacial damage via state-space method," *Composite Structures*, vol. 64, no. 3–4, pp. 275–283, 2004.
- [3] W. Q. Chen and K. Y. Lee, "Time-dependent behaviors of angle-ply laminates with viscous interfaces in cylindrical bending," *European Journal of Mechanics—A/Solids*, vol. 23, no. 2, pp. 235–245, 2004.
- [4] A. H. Gandhi and H. K. Raval, "Analytical and empirical modeling of top roller position for three-roller cylindrical bending of plates and its experimental verification," *Journal of Materials Processing Technology*, vol. 197, no. 1–3, pp. 268–278, 2008.
- [5] S. Oral and H. Darendeliler, "The optimum die profile for the cylindrical bending of plates," *Journal of Materials Processing Technology*, vol. 70, no. 1–3, pp. 151–155, 1997.
- [6] V. A. Jairazbhoy, P. Petukhov, and J. Qu, "Large deflection of thin plates in cylindrical bending—non-unique solutions," *International Journal of Solids and Structures*, vol. 45, no. 11–12, pp. 3203–3218, 2008.
- [7] A. Lebé and K. Sab, "A bending-gradient model for thick plates, part II: closed-form solutions for cylindrical bending of laminates," *International Journal of Solids and Structures*, vol. 48, no. 20, pp. 2889–2901, 2011.
- [8] P. V. Nimbolkar and I. M. Jain, "Cylindrical bending of elastic plates," *Procedia Materials Science*, vol. 10, pp. 793–802, 2015.
- [9] A. S. Sayyad and Y. M. Ghugal, "A nth-order shear deformation theory for composite laminates in cylindrical bending," *Curved and Layered Structures*, vol. 2, no. 1, pp. 290–300, 2015.
- [10] N. J. Pagano, "Exact solutions for composite laminates in cylindrical bending," *Journal of Composite Materials*, vol. 3, no. 3, pp. 398–411, 1969.
- [11] N. J. Pagano and A. S. D. Wang, "Further study of composite laminates under cylindrical bending," *Journal of Composite Materials*, vol. 5, pp. 421–428, 1971.
- [12] N. Saeedi, K. Sab, and J.-F. Caron, "Cylindrical bending of multilayered plates with multi-delamination via a layerwise stress approach," *Composite Structures*, vol. 95, pp. 728–739, 2013.
- [13] X.-P. Shu and K. P. Soldatos, "Cylindrical bending of angle-ply laminates subjected to different sets of edge boundary conditions," *International Journal of Solids and Structures*, vol. 37, no. 31, pp. 4289–4307, 2000.
- [14] Z. G. Bian, W. Q. Chen, C. W. Lim, and N. Zhang, "Analytical solutions for single- and multi-span functionally graded plates in cylindrical bending," *International Journal of Solids and Structures*, vol. 42, no. 24–25, pp. 6433–6456, 2005.
- [15] H. M. Navazi and H. Haddadpour, "Nonlinear cylindrical bending analysis of shear deformable functionally graded plates under different loadings using analytical methods," *International Journal of Mechanical Sciences*, vol. 50, no. 12, pp. 1650–1657, 2008.
- [16] W. Q. Chen, J. Ying, J. B. Cai, and G. R. Ye, "Benchmark solution of imperfect angle-ply laminated rectangular plates in cylindrical bending with surface piezoelectric layers as actuator and sensor," *Computers and Structures*, vol. 82, no. 22, pp. 1773–1784, 2004.
- [17] W. Q. Chen and K. Y. Lee, "Exact solution of angle-ply piezoelectric laminates in cylindrical bending with interfacial imperfections," *Composite Structures*, vol. 65, no. 3–4, pp. 329–337, 2004.
- [18] T. Kant and S. M. Shiyekar, "Cylindrical bending of piezoelectric laminates with a higher order shear and normal deformation theory," *Computers and Structures*, vol. 86, no. 15–16, pp. 1594–1603, 2008.
- [19] P. Lu, H. P. Lee, and C. Lu, "An exact solution for functionally graded piezoelectric laminates in cylindrical bending," *International Journal of Mechanical Sciences*, vol. 47, no. 3, pp. 437–438, 2005.
- [20] W. Yan, J. Wang, and W. Q. Chen, "Cylindrical bending responses of angle-ply piezoelectric laminates with viscoelastic interfaces," *Applied Mathematical Modelling*, vol. 38, no. 24, pp. 6018–6030, 2014.
- [21] Y. Y. Zhou, W. Q. Chen, and C. F. Lü, "Semi-analytical solution for orthotropic piezoelectric laminates in cylindrical bending with interfacial imperfections," *Composite Structures*, vol. 92, no. 4, pp. 1009–1018, 2010.
- [22] G. P. Dube, S. Kapuria, and P. C. Dumir, "Exact piezothermoelastic solution of a simply-supported orthotropic flat panel in cylindrical bending," *International Journal of Mechanical Sciences*, vol. 38, pp. 374–387, 1996.
- [23] V. N. Pilipchuk, V. L. Berdichevsky, and R. A. Ibrahim, "Thermo-mechanical coupling in cylindrical bending of sandwich plates," *Composite Structures*, vol. 92, no. 11, pp. 2632–2640, 2010.
- [24] C. Zhang, S. Di, and N. Zhang, "A new procedure for static analysis of thermo-electric laminated composite plates under cylindrical bending," *Composite Structures*, vol. 56, no. 2, pp. 131–140, 2002.
- [25] W. Q. Chen and K. Y. Lee, "State-space approach for statics and dynamics of angle-ply laminated cylindrical panels in cylindrical bending," *International Journal of Mechanical Sciences*, vol. 47, no. 3, pp. 374–387, 2005.
- [26] C.-P. Wu and Y.-S. Syu, "Exact solutions of functionally graded piezoelectric shells under cylindrical bending," *International Journal of Solids and Structures*, vol. 44, no. 20, pp. 6450–6472, 2007.
- [27] W. Yan, J. Ying, and W. Q. Chen, "The behavior of angle-ply laminated cylindrical shells with viscoelastic interfaces in cylindrical bending," *Composite Structures*, vol. 78, no. 4, pp. 551–559, 2007.

- [28] S. Brischetto, F. Tornabene, N. Fantuzzi, and E. Viola, "3D exact and 2D generalized differential quadrature models for free vibration analysis of functionally graded plates and cylinders," *Meccanica*, vol. 51, no. 9, pp. 2059–2098, 2016.
- [29] N. Fantuzzi, S. Brischetto, F. Tornabene, and E. Viola, "2D and 3D shell models for the free vibration investigation of functionally graded cylindrical and spherical panels," *Composite Structures*, vol. 154, pp. 573–590, 2016.
- [30] S. Brischetto and R. Torre, "Exact 3D solutions and finite element 2D models for free vibration analysis of plates and cylinders," *Curved and Layered Structures*, vol. 1, no. 1, pp. 59–92, 2014.
- [31] F. Tornabene, S. Brischetto, N. Fantuzzi, and E. Viola, "Numerical and exact models for free vibration analysis of cylindrical and spherical shell panels," *Composites Part B: Engineering*, vol. 81, pp. 231–250, 2015.
- [32] S. Brischetto, "Exact elasticity solution for natural frequencies of functionally graded simply-supported structures," *Computer Modeling in Engineering & Sciences*, vol. 95, no. 5, pp. 391–430, 2013.
- [33] S. Brischetto, "Three-dimensional exact free vibration analysis of spherical, cylindrical, and flat one-layered panels," *Shock and Vibration*, vol. 2014, Article ID 479738, 29 pages, 2014.
- [34] S. Brischetto, "A continuum elastic three-dimensional model for natural frequencies of single-walled carbon nanotubes," *Composites Part B: Engineering*, vol. 61, pp. 222–228, 2014.
- [35] S. Brischetto, "An exact 3d solution for free vibrations of multilayered cross-ply composite and sandwich plates and shells," *International Journal of Applied Mechanics*, vol. 6, no. 6, Article ID 1450076, 42 pages, 2014.
- [36] S. Brischetto, "A continuum shell model including van der Waals interaction for free vibrations of double-walled carbon nanotubes," *CMES-Computer Modeling in Engineering and Sciences*, vol. 104, no. 4, pp. 305–327, 2015.
- [37] S. Brischetto, F. Tornabene, N. Fantuzzi, and M. Baccocchi, "Refined 2D and exact 3D shell models for the free vibration analysis of single- and double-walled carbon nanotubes," *Technologies*, vol. 3, no. 4, pp. 259–284, 2015.
- [38] S. Brischetto, "Convergence analysis of the exponential matrix method for the solution of 3D equilibrium equations for free vibration analysis of plates and shells," *Composites Part B: Engineering*, vol. 98, pp. 453–471, 2016.
- [39] S. Brischetto, "Exact and approximate shell geometry in the free vibration analysis of one-layered and multilayered structures," *International Journal of Mechanical Sciences*, vol. 113, pp. 81–93, 2016.
- [40] S. Brischetto, "Curvature approximation effects in the free vibration analysis of functionally graded shells," *International Journal of Applied Mechanics*, 2016.
- [41] F. Tornabene, N. Fantuzzi, F. Ubertini, and E. Viola, "Strong formulation finite element method based on differential quadrature: a survey," *Applied Mechanics Reviews*, vol. 67, no. 2, Article ID 020801, pp. 1–55, 2015.
- [42] F. Tornabene, E. Viola, and N. Fantuzzi, "General higher-order equivalent single layer theory for free vibrations of doubly-curved laminated composite shells and panels," *Composite Structures*, vol. 104, pp. 94–117, 2013.
- [43] N. Fantuzzi, F. Tornabene, E. Viola, and A. J. Ferreira, "A strong formulation finite element method (SFEM) based on RBF and GDQ techniques for the static and dynamic analyses of laminated plates of arbitrary shape," *Meccanica*, vol. 49, no. 10, pp. 2503–2542, 2014.
- [44] F. Tornabene, N. Fantuzzi, and M. Baccocchi, "Free vibrations of free-form doubly-curved shells made of functionally graded materials using higher-order equivalent single layer theories," *Composites Part B: Engineering*, vol. 67, pp. 490–509, 2014.
- [45] F. Tornabene and E. Viola, "Static analysis of functionally graded doubly-curved shells and panels of revolution," *Meccanica*, vol. 48, no. 4, pp. 901–930, 2013.
- [46] F. Tornabene, N. Fantuzzi, M. Baccocchi, and R. Dimitri, "Dynamic analysis of thick and thin elliptic shell structures made of laminated composite materials," *Composite Structures*, vol. 133, pp. 278–299, 2015.
- [47] F. Tornabene, N. Fantuzzi, M. Baccocchi, and E. Viola, "Higher-order theories for the free vibrations of doubly-curved laminated panels with curvilinear reinforcing fibers by means of a local version of the GDQ method," *Composites Part B: Engineering*, vol. 81, pp. 196–230, 2015.
- [48] F. Tornabene, N. Fantuzzi, M. Baccocchi, and R. Dimitri, "Free vibrations of composite oval and elliptic cylinders by the generalized differential quadrature method," *Thin-Walled Structures*, vol. 97, pp. 114–129, 2015.
- [49] F. Tornabene and J. N. Reddy, "FGM and laminated doubly-curved and degenerate shells resting on nonlinear elastic foundations: a GDQ solution for static analysis with a posteriori stress and strain recovery," *Journal of the Indian Institute of Science*, vol. 93, no. 4, pp. 635–688, 2013.
- [50] N. Fantuzzi, F. Tornabene, and E. Viola, "Four-parameter functionally graded cracked plates of arbitrary shape: a GDQFEM solution for free vibrations," *Mechanics of Advanced Materials and Structures*, vol. 23, no. 1, pp. 89–107, 2016.



Hindawi

Submit your manuscripts at
<http://www.hindawi.com>

