

INTEGRATED GEOREFERENCING OF STEREO IMAGE SEQUENCES CAPTURED WITH A STEREOVISION MOBILE MAPPING SYSTEM – APPROACHES AND PRACTICAL RESULTS

Hannes Eugster^{a,b}, Fabian Huber^a, Stephan Nebiker^a and Antonio Gisi^c

^a Institute of Geomatics Engineering, FHNW University of Applied Sciences Northwestern Switzerland,
Muttenz, Switzerland – (hannes.eugster, fabian.huber, stephan.nebiker)@fhnw.ch

^b iNovitas AG, Mobile Mapping Solutions, Gründenstrasse 40, CH-4132 Muttenz, Switzerland –
hannes.eugster@inovitas.ch

^c Gisi e Bernasconi Ingegneria e Misurazioni SA, Via Moncucco 37, CH-6900 Lugano, Switzerland – info@ageo.ch

Commission I, WG I/5

KEY WORDS: Mobile Mapping, Georeferencing, GPS/INS, Sequences, Bundle Adjustment, Matching

ABSTRACT:

Stereovision based mobile mapping systems enable the efficient capturing of directly georeferenced stereo pairs. With today's camera and onboard storage technologies imagery can be captured at high data rates resulting in dense stereo sequences. These georeferenced stereo sequences provide a highly detailed and accurate digital representation of the roadside environment which builds the foundation for a wide range of 3d mapping applications and image-based geo web-services. Georeferenced stereo images are ideally suited for the 3d mapping of street furniture and visible infrastructure objects, pavement inspection, asset management tasks or image based change detection. As in most mobile mapping systems, the georeferencing of the mapping sensors and observations – in our case of the imaging sensors – normally relies on direct georeferencing based on INS/GNSS navigation sensors. However, in urban canyons the achievable direct georeferencing accuracy of the dynamically captured stereo image sequences is often insufficient or at least degraded. Furthermore, many of the mentioned application scenarios require homogeneous georeferencing accuracy within a local reference frame over the entire mapping perimeter. To achieve these demands georeferencing approaches are presented and cost efficient workflows are discussed which allows validating and updating the INS/GNSS based trajectory with independently estimated positions in cases of prolonged GNSS signal outages in order to increase the georeferencing accuracy up to the project requirements.

1. INTRODUCTION

1.1 Motivation

First developments in vision based mobile mapping data back around two decades (Schwarz 1993). Recent developments, e.g. in the development of new dense stereo matching algorithms or in imaging sensors and computing performance, are starting to open up new interesting and innovative application scenarios. However, mobile mapping data and deduced information are only usable for a wide range of applications, if the georeferencing accuracy of the images is well known and within bounds of a predefined accuracy level across the entire project perimeter. The great benefits of digitised street or rail corridors with mobile mapping systems are the manifold use for different mapping tasks, information extraction applications or spatial analyses. Many application scenarios like street or rail furniture mapping, asset management or surveys for planned construction work require a homogeneous georeferencing accuracy better than 10-15 cm with regards to a local geodetic reference frame and 2-3 cm locally. Guaranteeing a georeferencing accuracy within predefined specifications across the entire project is one of the key factors in ensuring the return on investment

The widely used INS/GNSS based direct georeferencing approaches, e.g. by Schwarz (1995) or Mostafa and Hutton (2005), for position and attitude estimation of mobile mapping sensors lead to degraded accuracies in the following two cases:
a) during GNSS signal outages especially in urban canyons or

on roads leading through forests and b) precise georegistration of the trajectory to a local, possibly distorted, geodetic reference frame. The wide spectrum of applications makes it desirable to increase the georeferencing accuracy to a predefined accuracy level, either on demand for specific parts of the project perimeter, e.g. for road sections with planned construction work, or for an entire project perimeter in a cost efficient manner. This paper discusses integrated georeferencing approaches and workflows to meet this requirements in a cost efficient way.

1.2 Related Work

The following known and established approaches are used for increasing the georeferencing accuracy of directly georeferenced sensor observations with respect to a local geodetic reference frame. Many workflows nowadays used in practice are based on a *3d helmert transformation approach*. The 3d coordinates determined based on the directly georeferenced trajectory are subsequently transformed as a whole or in sections based on known control points. The helmert transform based georegistration approach is relatively simple and can be applied to 3d coordinates derived by any kind of sensor. However, it assumes the absence of a number of potential error sources such as drifts in sensor orientation parameters or local distortions in the reference framework. Further, in many cases discontinuities arise between two transform parameter sections.

A more advanced and more powerful georegistration is offered by integrated georeferencing. In integrated georeferencing the exterior orientation parameters of mobile mapping sensors are determined in a combination of INS/GNSS-based direct georeferencing and indirect georeferencing often incorporating a bundle adjustment (Eugster 2011). In airborne photogrammetry different concepts can be distinguished. Haala (2005) and Cramer (2001) propose the *stripwise integration approach* and the *orientation image approach*, which allow the estimation of biases of the directly measured INS/GNSS trajectory, in relation to a local reference frame with the aid of additional image observations to known ground control points. Further, many approaches use the exterior orientation parameters measured by INS/GNSS to support the aerotriangulation (AT) with additional observations (Heipke 2002). A general integrated georeferencing concept which is derived from simultaneous localisation and mapping (SLAM) integrates the INS, GNSS and vision observations in the estimation of an optimal position and attitude trajectory (Durrant-Whyte and Bailey 2006). Ellum (2006) or Bayoud (2006) show implementations of that concept for photogrammetric mobile mapping applications. Further approach is proposed and investigated by Hassan et. al. (2006) or Forlani et. al. (2005) using a photogrammetric adjustment to bridging land based mobile mapping image sequences during GNSS denied track sections.



Figure 1. Stereo vision based mobile mapping system

1.3 Structure and goal of the paper

The following section introduces the stereo vision mobile mapping system together with the imagery processing pipeline and client components for exploiting the georeferenced stereo imagery sequences. The main section describes the proposed integrated georeferencing approach combining stereo vision, INS and GNSS which allows increasing the georeferencing accuracy during GNSS signal outages on the one hand, and which provides precise georegistration of the trajectory regarding to a local geodetic reference frame on the other. In the following section, the performance of the algorithm is evaluated and discussed based on several test sequences captured in real urban canyons. The paper is concluded with some cost-benefit considerations by putting the number and spacing of ground control points in relation to the obtainable accuracies and with an outlook on on-going and future development steps in optimal georeferencing of vision-based mobile mapping data.

2. STEREO VISION BASED MOBILE MAPPING

Stereo vision based mobile mapping allows the flexible, highly efficient mapping and the subsequent easy interpretation of digitised street or rail corridors. The support for multiple, freely configurable stereo imagery systems on varying mobile mounting platforms provide accurate 3d position estimation in combination with the possibility to extract rich semantic information of arbitrary geobjects.

2.1 Stereo image acquisition system

The stereo vision acquisition system used in our investigations consists of the following components: a. multiple configurable stereo systems, b. INS/GNSS based navigation sensors together with a navigation controller and c. imagery acquisition, synchronisation and triggering soft- and hardware components. Figure 1 shows the stereo vision acquisition system mounted on a mobile mapping motor vehicle¹ with three free configurable stereo systems on the roof top. One important advantage of stereo systems is that the relative orientation of both cameras can be estimated with high accuracy. This not only allows the determination of highly accurate 3d coordinates and relative measures inside the same stereo frame (Luhmann 2003). The stereo image acquisition geometry also enables an exterior orientation estimation with regards to the local reference frame for each measuring epoch – independent from any INS/GNSS observations.

2.2 Data pipeline and processing workflow

In order to support a flexible and distributed use of the stereo imagery for a number of visualisation, inspection or measurement tasks, a powerful data processing pipeline and suitable exploitation software components are required. The processing and exploitation workflow is shown in Figure 2.

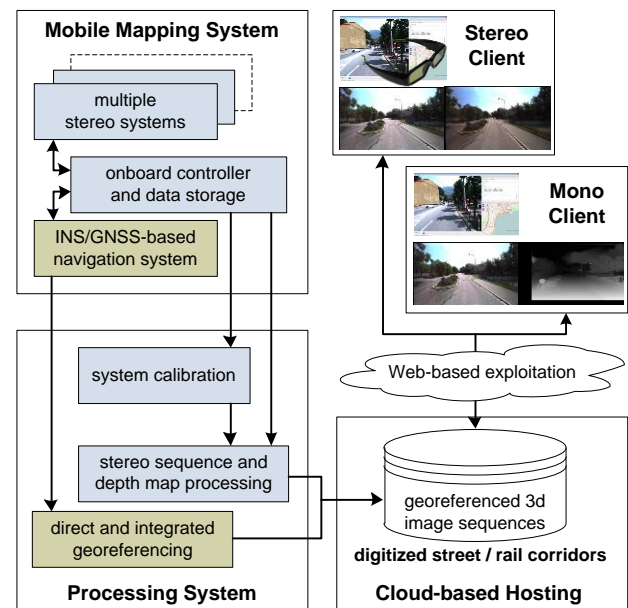


Figure 2: Stereo vision data pipeline and distributed use

¹ Motor vehicle based stereo vision mobile mapping system *vitas1* of iNovitas AG (<http://www.inovitas.ch>)

4. RESULTS AND PERFORMANCE

4.1 Test configuration an validation test sites

The proposed INS/GNSS/Vision georeferencing approach was validated in the following two independent test projects:

	A	B
Test site	City of Lugano (Canton Ticino, CH)	Bolligen (Canton Bern, CH)
Length of test track	1.7 km	1.5 km
Avg. capturing velocity	40 km/h	40 km/h
Environment	Urban canyon with prolonged GNSS signal outages (~1-2 minutes)	Intermittent GNSS signal outages caused by buildings and trees
Control points		
Type and accuracy	CPG of 5-8 CPs (1 σ : 1- 2 cm)	Single CP (1 σ : 3-5 cm)
Feature	Measured street signs or marked corners	Existing manhole cover coordinate
CP or CPG spacing	20 sec or 200 m	15 sec or 150 m
INS/GNSS/Vision fusion approach	BA based CPG updated (with- out heading)	Single CP update
Stereo camera system	Full HD	11 MP
Stereo base length	91 cm	91 cm
Geometric resolution	1920 x 1080	4008 x 2672
Angle of view	85° x 54°	81° x 60°

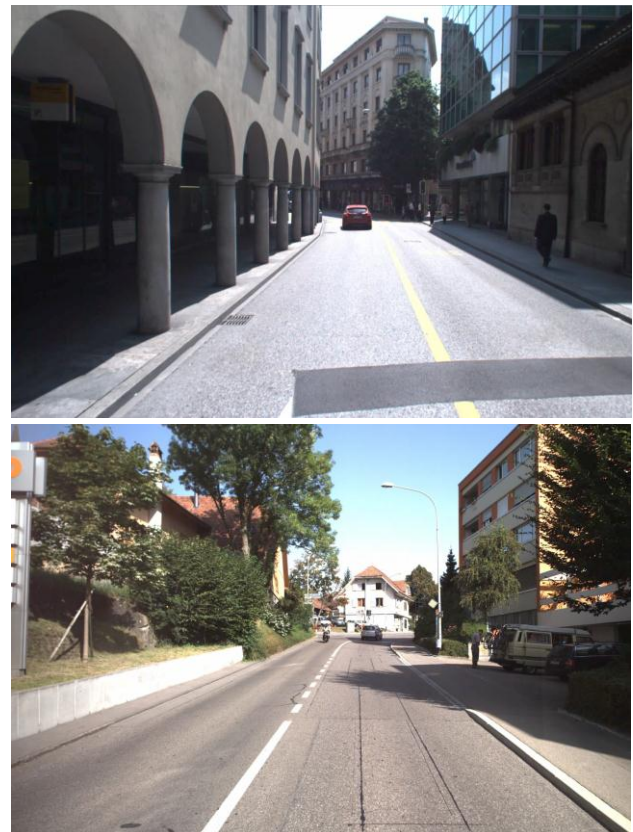


Figure 4: Urban canyon in test site A (top) and buildings and trees in test site B (down)

Figure 4 illustrates the typical environment of the two test sites. For the tests and validation an INS/GNSS navigation system with the following georeferencing performance was used:

Manufacturer: Applanix Corporation
Navigation system: POS-LV 210
Sensors: INS HG1700-AG60,
GNSS and DMI

Trajectory Accuracy ²	with GNSS	after 60sec outage
X, Y Position	0.02m	0.32m
H Height	0.05m	0.13m
Roll, Pitch	0.02°	0.06°
Heading	0.05°	0.06°

4.2 Integrated georeferencing results

The following Table 1 summarises the integrated georeferencing (IG) accuracy for the two test projects **A** and **B** in comparison with the degraded direct georeferencing (DG) solution. These investigations were carried out with the proposed INS/GNSS/Vision fusion approach described in section 3.2. Figure 5 shows the residual vectors in horizontal position and height for the control and check points based on the directly georeferenced trajectory (left) and the integrated solution (right) for test site **A**.

		DG		IG	
		mean	std. dev.	mean	std. dev.
A	X [cm]	-13.9	17.1	1.4	4.2
	Y [cm]	10.9	17.3	0.9	4.2
	H [cm]	6.1	9.3	0.5	1.7
	2D [cm]		24.3		5.9
	3D [cm]		26.0		6.2
B	X [cm]	-7.4	9.0	-0.5	5.1
	Y [cm]	1.8	7.4	2.0	5.7
	H [cm]	-16.6	18.5	-1.5	2.7
	2D [cm]		11.6		7.7
	3D [cm]		21.9		8.1

Table 1. Direct vs. integrated georeferencing accuracy – residual coordinate differences in control and check points

The residuals of the direct georeferenced solution show clear systematic error behaviour in horizontal position and height caused by GNSS signal outages. The integrated georeferencing approach shows a significant improvement of the georeferencing accuracy compared to the direct georeferencing solution. The residuals are nearly free of systematic effects. The proposed INS/GNSS/Vision fusion allows preserving the georeferencing accuracy during degenerated trajectory sections at the same accuracy level as in unobstructed parts of the project with an optimal direct georeferencing solution. Further, the obtainable absolute georeferencing accuracy is also depending on the

² Manufacturer's data from <http://www.applanix.com>

control point quality with respect to the local geodetic reference frame. This becomes evident if empirical accuracies of test sites **A** and **B** are compared (see Section 4.1). The selectable CP or CPG spacing depends on the required georeferencing accuracy, the quality of the integrated INS as well as on the acquisition speed of the mobile mapping system.

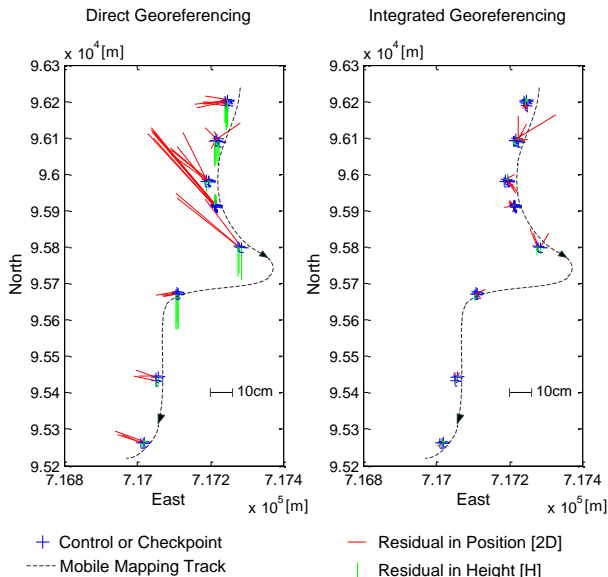


Figure 5. Residual vectors in check and control points

5. COST-BENEFIT CONSIDERATIONS AND RECOMMENDATIONS

If the direct georeferenced trajectory is degraded due to GNSS signal outages or due to systematic errors such as multipath effects, incorrectly fixed GNSS carrier phase ambiguities or cycle slips the proposed integrated georeferencing approach based on INS/GNSS/Vision fusion should be preferred. For trajectory parts with (expected) systematic GNSS errors and with sufficient and well-distributed control points, the available GNSS updates can be fully substituted by vision updates. For correctly registering the directly georeferenced trajectory to a local geodetic reference frame which is affected by a network scale or local network distortions both integrated georeferencing approaches presented in section 3.2 and 3.3 are well suited. Compared to the single control point update concept, the bundle adjustment based coordinate approach permits the fully independent determination of vision based coordinate and heading updates without any initial trajectory attitude solution. Further, the involved control points inside a CPG can be checked with the stereo bundle adjustment results. On the other hand the single control point update approach is more flexibly deployable. Especially if existing geobjects are available in the project area, their coordinates can easily be used for single point updates in order to support the trajectory determination locally.

If a project perimeter is to be mapped repeatedly, e.g. for infrastructure asset management web services, it is sensible to create a control point cadastre with CP or CPG which can be used for the georeferencing process of each mapping campaign. If a trajectory part has to be improved, control points can be defined and signalled in advance. Further control points can be defined and measured afterwards on an 'as needed basis' depending on the quality assessment of the directly georeferenced trajectory. Especially image data are well suited

to measure appropriated points to support the directly georeferenced trajectory afterwards. For this purpose traffic sign corners or street marks are well suited.

6. CONCLUSIONS AND OUTLOOK

The proposed integrated georeferencing approach shows that degraded direct georeferencing trajectories especially in urban canyons can be improved by additional vision based updates using tie points and control points. This possibility is very important in order to guarantee a specified accuracy level of mobile mapping data across a whole project perimeter also with unfavourable GNSS conditions. As shown in this paper, stereovision-based mobile mapping offers several powerful options for improving the georeferencing accuracy even under adverse GNSS conditions and in locally distorted reference frameworks. Furthermore, the proposed integrated georeferencing approaches are capable of providing high quality results without a need for the ultimate high-end IMU sensors.

Further work will proceed with fusion of INS, GNSS and vision on raw observables e.g. in a tightly coupled Kalman Filter or information filter. Interesting concepts and approaches are discussed in the SLAM community and need to be adapted to geodetic application scenarios. Furthermore, stereo vision is well suited as additional independent sensor for navigation data processing. A stereo image sequence bundle adjustment allows bridging and supporting the INS observations during GNSS outages. It provides independent position and attitude information, thus increasing and stabilising the continuous trajectory estimation. In this way the trajectory can directly be processed in an arbitrary, potentially distorted, geodetic reference frame.

7. REFERENCES

- Angrisano, A. 2010. GNSS/INS Integration Methods. PhD Thesis, Dipartimento di Scienze Applicate, Universita 'Degli Studi Di Napoli Parthenope'
- Bayoud, F. A. 2006. Development of a robotic mobile mapping system by vision-aided inertial navigation a geomatics approach. *Geodätische-geophysikalische Arbeiten in der Schweiz*, 71, Zürich, Schweizerische Geodätische Kommission
- Burkhard, J., Nebiker, S. & Eugster, H. 2011. *Stereobild-basiertes Mobile Mapping: Technologie und Anwendungen*, Geomatik Schweiz 2011/6, S. 295-298
- Burkhard, J., Cavegn, S., Barmettler, A. & Nebiker, S. 2012. Stereovision mobile mapping: System Design and performance evaluation. In *Proc. International Archives of Photogrammetry, Remote Sensing and Spatial Information Sciences XXII ISPRS Congress, Melbourne* (accepted)
- Cramer, M. 2001. Genauigkeitsuntersuchung zur GPS/INS-Integration in der Aerophotogrammetrie. Dissertation, Stuttgart, Universität Stuttgart
- Durrant-Whyte, H. F. & Bailey, T. 2006. Simultaneous Localisation and Mapping (SLAM): Part I The Essential Algorithms. *Robotics & Automation Magazine, IEEE*, 13(2) pp. 99-110

Ellum, C. M. & El-Sheimy, N. 2006. New Strategies for integrating photogrammetric and GNSS data. In Proc. International Archives of Photogrammetry, Remote Sensing and Spatial Information Sciences, 36(Part 5), pp. 103-108. ISPRS Commission V Symposium 'Image Engineering and Vision Metrology', Dresden

Eugster, H. 2011. Echtzeit-Georegistrierung von Videodaten mit Hilfe von Navigationssensoren geringer Qualität und digitalen 3D-Landschaftsmodellen. Dissertation, Humboldt-Universität zu Berlin, Institut für Informatik

Forlani, G., Roncella, R. & Remondino, F., 2005. Structure and motion reconstruction of short mobile mapping image sequences. VII Conference on Optical 3D Measurement Techniques - Gruen/Kahmen (Eds), October 2005, Vienna, Austria

Haala, N. 2005. Multi-Sensor-Photogrammetrie. Habilitation, Stuttgart, Universität Stuttgart

Hassan, T., Ellum, C., Nassar, S., Cheng, W. & El-Sheimy, N. 2006. Photogrammetric Bridging of GPS/INS in Urban Centers for Mobile Mapping Applications, Proceedings of the 19th International Technical Meeting of the Satellite Division of The Institute of Navigation (ION GNSS 2006), Fort Worth, TX, September 2006, pp. 604-610

Huber, F., Nebiker, S. & Eugster, H. 2011a. Image Sequence Processing in Stereovision Mobile Mapping – Steps towards Robust and Accurate Monoscopic 3D Measurements and Image-Based Georeferencing. Photogrammetric Image Analysis, Lecture Notes in Computer Science, Volume 6952/2011, 85-95, DOI: 10.1007/978-3-642-24393-6_8

Huber, F. 2011b. Entwicklung eines integrierten Georeferenzierungsansatzes für fahrzeuggestützte mobil erfasste Stereobildsequenzen, Vertiefungsprojektarbeit, MSE GIT, FHNW University of Applied Sciences Northwestern Switzerland. (undisclosed)

Luhmann, T. 2003. Nahbereichsphotogrammetrie Grundlagen, Methoden und Anwendungen. 2. Auflage, Heidelberg, Wichmann

Mostafa, M. & Hutton, J. 2005. 10 Years of Direct Georeferencing for Airborne Photogrammetry. GIS, 11/2005

Schwarz, K., Champman, M. & Cosandier, D., 1993. VISAT - A Mobile Highway Survey System of High Accuracy. In Proceedings of the Vehicle Navigation and Information Systems Conference. Ottawa, S. 467-481

Schwarz, K. P. 1995. Integrated airborne navigation systems for photogrammetry. In Proc. Photogrammetric Week '95, pp. 139-153. Photogrammetric Week '95, Herbert Wichmann Verlag, Heidelberg