

Emergence of Collective Behavior in a System of Autonomous Agents

I. ANTONIOU^{a,b}, F. BOSCO^{a,b,c,*}, V.V. IVANOV^{a,d} and I.V. KISEL^{a,d}

^a*International Solvay Institutes for Physics and Chemistry, C.P. 231, Boulevard du Triomphe, B-1050 Brussels, Belgium;*
^b*Theoretische Natuurkunde, University of Brussels (V.U.B.);* ^c*Departamento de Física, Universidade Federal do Espírito Santo,*
29060-900 – Vitória – ES, Brazil; ^d*Joint Institute for Nuclear Research, Dubna, 141980, Russia*

(Received 4 February 1999)

We study the properties of emergent collective behavior in a system of interacting autonomous agents. The system evolves in time according to two rules of communication, one from interactions between agents and another one from interactions of the agents with an additional agent which evolves in time in a periodic and stable manner. The application of these two rules is decided by a prescribed probability distribution. We analyze the emergence and the efficiency (coordination) with which collective patterns are constructed in time as a function of the parameters of the system.

Keywords: Chaos, Control, Autonomous agents, Emergence of collective behavior

1 INTRODUCTION

These days, the term agent (as in multi-agent systems) and its derivatives acquires different meaning in various areas of the fast growing sciences and technologies of information. In this work we employ the general term agent as a mobile independent entity, able to communicate and interact with its environment and other agents. This term is well in accordance with the term's definition, quite widely accepted as in [12]. Agent can be used in models for biological [1] and/or robot communities [6]. We conjecture that these kinds of

modeling capture some elementary aspects of the dynamics of social self-organizing systems, like the spread of rumors (or information in general) in intercommunicating systems.

Since now the study of the collective behavior of autonomous agents has been performed using Monte Carlo methods [4]. In [4] each agent is programmed with the same rules of movement, based on the signals received from other agents. Each agent emits an omni-directional signal and in turn receives external signals using four receptors (ahead, behind, left, right) capable to identify at most four directions in space. Its position and

* Corresponding author. International Solvay Institute for Physics and Chemistry, C.P. 231, Boulevard du Triomphe, B-1050 Brussels, Belgium.

movement affect the position and movement of other nearby agents and vice-versa. While no group movement is programmed, patterns regularly emerge from such interactions.

In [5] it is considered a set of basic interactions or primitives, which can be used to structure and simplify the process of designing and analyzing group behaviors. There the main goal is to introduce the types of simple local interactions which can produce complex and purposive group behaviors. It was demonstrated how these basic interactions can be simply combined into more complex compound group movements. The developed set of interactions was tested on a herd of physical mobile robots demonstrating the existence of patterns of collective behaviors: avoiding, following, dispersing, aggregating, homing, flocking, and herding. This investigation has shown that for simple spatial behaviors no dominance hierarchies are necessary, or indeed helpful.

In this work we study the behavior of a group of autonomous agents by means of a cellular automaton. Cellular automata arose from numerous attempts to create a simple mathematical model describing complex biological structures and processes [11]. A cellular automaton is a simple discrete dynamical system, the behavior of which is totally dependent upon the local interconnections between its elementary parts [7]. This kind of modeling turned out to be very productive and has been widely and successfully applied in various fields. From the mathematical point of view cellular automata can be viewed as finite-state machines with feedback. See for example [2,8] and references therein.

Motivated by the early works of Von Neumann [10] and Burks [3], we are investigating the implementation of Probabilistic Cellular Automata in the study of coupled multi-species agent groups. As a first step we consider the communication between two species governed by a probabilistic rather than a deterministic process. In this way we implement the kind of coupling suggested in [9] following the spirit of probabilistic control for unstable systems. Here the controller (in the

language of [9]) is considered to be the population of agents following a specific stable pattern, and as the unstable system the population which tends to move in a dispersive way in which collective patterns may exist but are not stable in time.

We consider the system of autonomous agents divided in two interacting subgroups coupled according to a prescribed probability distribution. As a result of coupling the whole system behaves collectively in a way which depends upon the values of the free parameters of the system.

In Section 2 we describe the model, the quantities used for analysis and we give a brief description of the computation environment used. Section 3 contains the results and analysis of the collective behavior of the system in relation with its different free parameters. In Section 4 we present the construction of a “path finder” where the group of agents is used for the purpose of pattern recognition. In Section 5 we present concluding remarks.

2 DESCRIPTION OF THE MODEL

We consider a system composed of 9 agents (designated as ordinary agents) plus one agent denominated the leader agent. The 9 + 1 agents move in a domain of two spatial dimensions. The domain is a square discretized in 300×300 square cells. Each cell may be occupied by at least one agent. At equally spaced discrete times each agent may detect the presence of other ordinary agents and/or the leader if they are inside a defined perception region. This region is defined as a domain around each ordinary agent and is divided in four identical angular sectors: ahead, left, right, back. To each sector it is associated a radius of perception R_a , R_l , R_r , R_b , respectively, for the communication between ordinary agents. For the communication between an ordinary agent and the leader agent we define an independent radius of perception R_L , equal for the ahead, left, and right directions, see Fig. 1. In all the cases studied here it is considered $R_b = 0$ and $R_L = 0$ for the back sector perception, so that all the agents are “blind” with

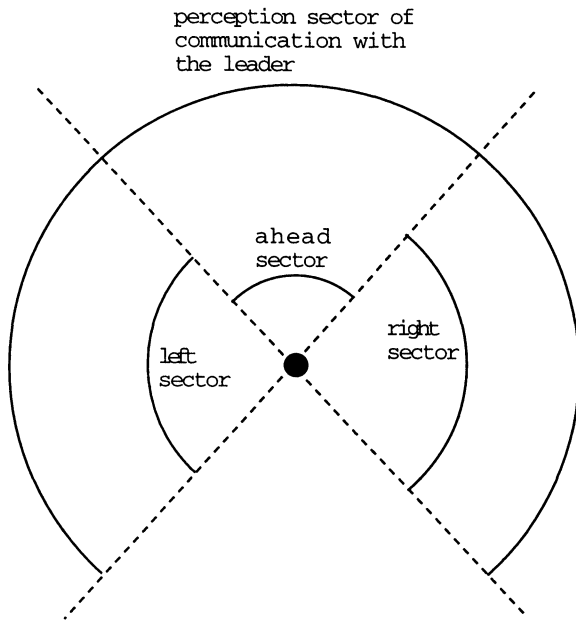


FIGURE 1 The sectors of perception ahead, left, right (with radius R_a , R_l , R_r) for the communication between agents, and for the communication with the leader (with radius R_L).

respect to this sector. This distinction in four perception sectors, together with the rules of the cellular automaton described below, models the agents with a capability of distinction of some directions in space.

The leader agent is programmed to perform a stable circular path of radius ρ_L , located at the center of the two-dimensional square domain. The leader does not receive any signal but sends its signal to the other 9 agents of the system.

The time evolution is realized by a cellular automaton. As initial condition the ordinary agents are distributed randomly on the cells of the square domain. According to a prescribed probability distribution p_L each ordinary agent updates its position in space by interacting with the leader or with another ordinary agent (provided they are perceived in the perception region). If $p_L=0$ the leader agent is considered as an ordinary agent with respect to the updating rules of the cellular automaton described below.

All the ordinary agents move with velocity equal to one in modulo. The leader agent moves with a

velocity which intensity v_L may be any positive value but constant in time. In this work we study the cases when $v_L = 0.2, 0.4, 0.6, 0.8, 1.0$. The motivation for this choice will be clear in the next section.

Due to the discretization of the domain, a single spatial displacement of the agents means a transition from one cell to its neighbor cell. As the agents are blind with respect to the back sector of perception and as each cell has 8 neighbor cells then the velocity vector of an ordinary agent may have 7 different directions $\theta = -3\pi/4, -\pi/2, -\pi/4, 0, \pi/4, \pi/2, 3\pi/4$, with respect to the ahead direction.

We notice that the parameter p_L can be viewed as a measure of noise in the communication channel between the leader agent and the group of ordinary agents. The velocity v_L may be interpreted as an anticipated response of the ordinary agents with respect to the leader when $v_L < 1$, or as a measure of similarity between the leader and the ordinary agents, as far as the reaction in time is concerned. The two radius R , R_L measures the range of the agent/agent and agent/leader interactions.

The robustness of collective behaviors of the system depends strongly on R , R_L and p_L , and the geometrical characteristics of the collective pattern constructed in space depend on the parameter v_L .

The dynamical law is implemented by the set of updating rules of the cellular automaton as follows:

1. According to the prescribed probability p_L a probabilistic game is played. If the outcome is (yes) go to rule 2. If the outcome is (not) go to rule 3.
2. Check if the distance to the leader agent is less than R_L . If yes then follow the leader moving one cell in its direction. If the distance to the leader is larger than R_L then go to rule 3.
3. Find the agents (including eventually the leader) which are at a distance less than R . If no agents are detected then move ahead. If there is an agent in the ahead sector then move in the ahead direction. If there is an agent in the left sector and no other agent in the ahead sector then move to the left direction. If there is an agent in the right sector and no other one in

the ahead and in the left sectors then move to the right direction.

As the domain is a square lattice of cells then in rule 3 the angular displacement left (right) may be of 90° (-90°), 45° (-45°) or 135° (-135°) with respect to the ahead direction. Due to that we introduce a “thermal” like noise according to which when rule 3 applies for a left (right) shift the angular displacement may be any of the three deviations to left (right) or even to ahead which corresponds to an eventual “mistake”. The level of such noise determines statistically the mean value of the angular displacement (equal for all ordinary agents) with which the agents shift their direction of movement.

We use reflexive boundary conditions for the interaction between the ordinary agents and the boundaries of the square domain, so that the incoming direction is identical to the outgoing direction with respect to the direction orthogonal to the boundary.

For the analysis the program was realized in three versions: in Pascal for IBM PC/AT under MS DOS, in Fortran for UNIX system and in Java for WWW.[†]

3 COLLECTIVE BEHAVIOR AND ANALYSIS OF RESULTS

3.1 A Quantitative Measure of Collective Behavior

In order to study the properties of the collective movements of the system we consider the velocity–velocity correlation function for an ordinary agent.

Let $\vec{r}_i(0), \vec{r}_i(1), \dots, \vec{r}_i(t), \dots$ denote the position vectors of an individual agent i at discrete times $0, 1, \dots, t, \dots$. The velocity at each time step,

$$\vec{v}_i(t) = \frac{\vec{r}_i(t+1) - \vec{r}_i(t)}{|\vec{r}_i(t+1) - \vec{r}_i(t)|}, \quad (1)$$

has constant absolute value equal to one. So the scalar product between the two velocity vectors at

times t and $t + \tau$ is simply

$$\vec{v}_i(t) \cdot \vec{v}_i(t + \tau) = \cos[\theta_i(t) - \theta_i(t + \tau)], \quad (2)$$

$$\tau = 1, 2, \dots,$$

where $\theta_i(t)$ is the direction of the vector $\vec{v}_i(t)$.

We define the velocity–velocity correlation function for the agent i as

$$C_i(\tau) = \lim_{T \rightarrow \infty} \frac{1}{T} \sum_{t=1}^T \vec{v}_i(t) \cdot \vec{v}_i(t + \tau)$$

$$= \lim_{T \rightarrow \infty} \frac{1}{T} \sum_{t=1}^T \cos(\theta_i(t) - \theta_i(t + \tau)). \quad (3)$$

After calculating the function $C_i(\tau)$ for each agent we consider the mean $C(\tau) = 1/N \sum_i C_i(\tau)$, over the group of 9 agents.

The correlation function $C(\tau)$ fully reveals the existence of coherent movement of the group of agents even if individually the agents do not execute a periodic movement. In fact the coherent collective movements that emerge are executed by the group of agents as a whole. If by some reason an agent escapes from the collective pattern of movement another agent outside the pattern is eventually captured by the group executing this movement. The efficiency with which this substitution mechanism is implemented by the system we call the degree of coordination associated with the collective movement. If this collective movement is less coordinated it implies the substitution mechanism is not well performed. This is reflected by an increased amount of noise in the velocity correlation function. The Fourier transform of the function $C(\tau)$, the power spectrum, determines the characteristic frequencies of the collective movement.

From the basic individual communications there are three kinds of interactions that take place in time: between agents at the individual level, between agents and the boundaries of the domain, and between the leader agent and the group (or a subgroup) of ordinary agents. The last one is responsible for the eventual emergence of collective

[†] <http://solvayins.ulb.ac.be/fixed/Agents.html>.

behavior, and together with the interaction between agents is also responsible for the large or small efficiency (coordination) of the collective movement.

We consider some typical cases in order to stress the important features of the model: the velocity $v_L = 0.2, 0.4, 0.6, 0.8$, the radius $R_L = 25, 50, 75, 200$, the radius $R = 50, 200$, and the probability $p_L = 0.0, 0.1, 0.2, \dots, 1.0$. For each simulation it was considered a duration of 20 h (in units of the cellular automaton) which corresponds to 8192 points for the velocity–velocity correlation function. An additional case is also considered where the radius for the ahead, left, and right sectors of perception are different: $R_a = 30$, $R_l = R_r = 100$, $v_L = 0.8$.

In the special case $R_L = 0$ the agents are insensitive to the presence of the leader. Then for different values of R the group of agents may self-organize in different ways. Circular movements may emerge and disappear in time if R is small enough. In the case $R = 200$ and $R_L = 0$, the agents communicate in long distances and they move as a close group in a linear trajectory changing direction only after colliding with the boundaries. If $R_L \neq 0$ this grouped movement is disturbed and depending upon the values of v_L and p_L a different collective pattern is constructed. In this case the leader acts as a perturbation which may contribute for the emergence of a new pattern or may destroy any possibility of collective movement.

3.2 Dependence with Respect to v_L

The simplest case is $v_L = 1.0$. It corresponds to the intuitive idea that the most the agents receive information from the leader, the most the leader is followed by the agents for any value of $R \neq 0$ and $R_L \neq 0$. As there is no delay in the velocity of the leader with respect to the velocity of the agents the loss of information from the leader comes only from the noise in the communication represented by the probability p_L . The mean number of agents following the leader decreases uniformly with p_L . For $p_L = 1.0$ all the agents follow the leader in a

stable circular movement with period equals to the size of the leader’s path. In this case the power spectrum of the velocity–velocity correlation function has a pronounced peak at the frequency $f = 33$ which corresponds to the period $T \sim 251$, the size of the leader’s path. The amplitude of this peak is a measure of the efficiency or coordination of this simple collective behavior. The peak achieves its maximum value for $p_L = 1.0$, meaning that the coordination is best performed for this value of p_L .

For $v_L < 1$ the situation changes significantly. With respect to the agents the ordered signal sent by the leader now corresponds to the period $T = 2\pi\rho_L/v_L$, where ρ_L is the radius of the leader’s path. The new collective behavior that emerges is a result of the attempt of the group of agents to adapt the collective movement to the new periodic information of period T . The solution to this new situation is to increase the total length of the collective movement to the new value of T by means of an additional loop internal to the leader’s path, see Fig. 2.

At the local individual level this internal loop may be realized when an agent crosses the leader due to their different velocities. At this moment the individual agent perceives the leader at its left, right or back perception sector. If the leader is in its back sector then the agent will continue to move ahead and will quit the collective pattern. On the other hand if the leader is perceived in its left (right) sector then the agent will move left (right). It continues to shift left (right) until the moment it completes the loop and it perceives the leader or other agents

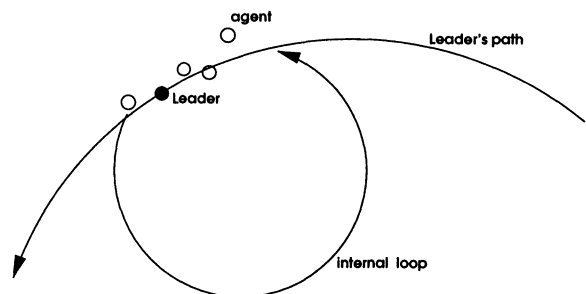


FIGURE 2 An illustration of the loop internal to the leader’s path performed by an ordinary agent.

again in its ahead perception sector. It is important to note that after eventually escaping the collective pattern the agents arrive back to the leader's neighborhood after some time perceiving the leader in its left perception sector. Therefore loops internal to the leader's path are more often observed than loops external to it.

The collective movement has now a period $T=2\pi\rho_L/v_L$. This is illustrated in Figs. 3 and 4, where it is shown the velocity-velocity correlation function and its Fourier transform for $v_L=0.8$. The frequency of the main peak is $f=26$ corresponding

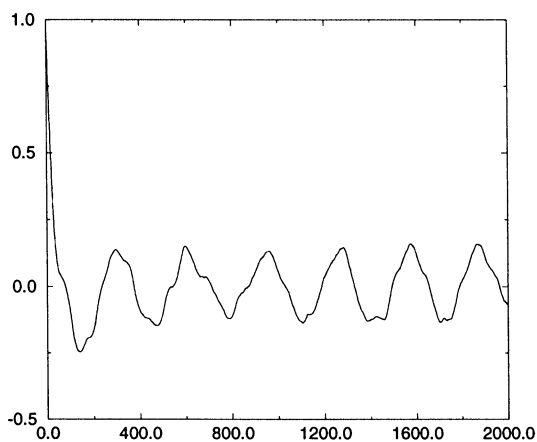


FIGURE 3 The velocity correlation function for the case $v_L=0.8$.

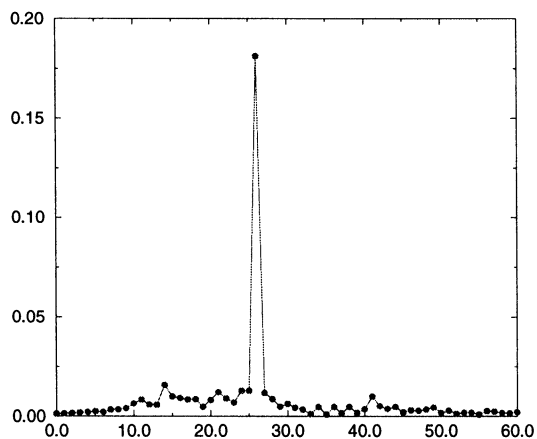


FIGURE 4 Power spectrum of the velocity correlation function for $v_L=0.8$. The main peak corresponds to the frequency of the collective movement of the agents.

to $T=2\pi\rho_L/v_L \sim 314$. In Fig. 5, it is shown the power spectrum for $v_L=0.6$. The frequency $f=20$ corresponds to $T \sim 419$. The collective movement is formed by the leader's path plus an internal loop larger than in the case where $v_L=0.8$.

As v_L decreases the period T increases. The collective pattern is the leader's circular path plus the internal loop which increases in size inversely with v_L . The limiting situation corresponds to $v_L=0.5$. In this case the internal loop overlaps with the leader's path, and if $v_L < 0.5$ the loop becomes larger than the main part of the circular path. Obviously this situation cannot be sustained. After crossing the leader the agents continue to move ahead, the loop is not completed and the collective pattern is destroyed.

3.3 Dependence with Respect to p_L

For $0.5 < v_L < 1.0$ the collective movement has the recursive time $T=2\pi\rho_L/v_L$. The amplitude of the peak corresponding to the period T in the power spectrum of the correlation function measures the coordination or efficiency with which the collective movement is performed. This amplitude depends crucially on the probability p_L which is a measure of the noise level in the communication between the agents and the leader.

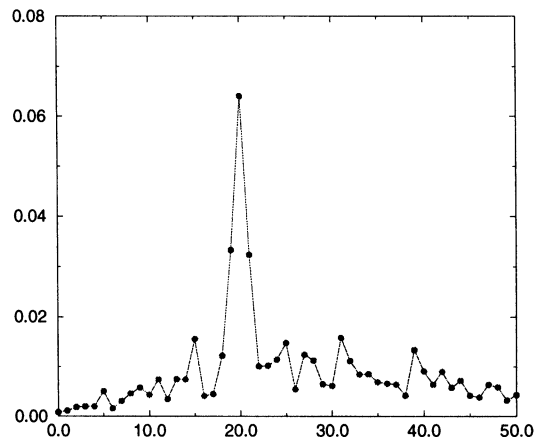


FIGURE 5 The power spectrum of the velocity correlation function for $v_L=0.6$. The frequency of the main peak decreases as v_L decreases.

We observe that in this case the maximum value of the amplitude of the main peak of the power spectrum does not correspond to $p_L = 1.0$ but to some $p_L < 1.0$. This implies that in the case the velocities of the leader and the agents are different the maximum efficiency of the collective movement is achieved if there is some noise in the leader/agents communication. In other words excess of information from the leader makes the coordination decreases as far as the realization of the collective movement is concerned.

Figure 6 presents the variation of the amplitude intensity of the main peak against p_L for $v_L = 0.8$ and $R_L = 50$ (circles), $R_L = 75$ (triangles). The maximum corresponds approximately to $p_L = 0.1$. In Fig. 7 the same curve is presented for a different case where the left, right and ahead perception sectors are not all equal: $v_L = 0.8$, $R_a = 0.3$, $R_l = R_r = 100$. Here the amplitude is maximum around $p_L = 0.3$.

The corresponding value of $p_L < 1.0$ for the maximum amplitude may be interpreted as a counterbalance with respect to the relative velocity if we interpret the parameter v_L as an advanced response of the agents to the leader's signal. If p_L is large the group of agents following the leader moves in a less coherent way with respect to the collective

pattern. As a consequence the level of noise in the correlation function increases and the amplitude corresponding to the collective movement decreases. This effect is due exclusively to the interaction between the leader and the group of agents together with the communication between agents.

3.4 Dependence with Respect to R and R_L

The dependence of the collective movement with respect to R_L is simple. For fixed values of $v_L > 0.5$, p_L and R we observe an increase in the amplitude intensity of the corresponding collective movement with the value of R_L . This means that the farthest the signal of the leader is perceived in space the largest the efficiency of the corresponding collective movement.

In order to understand the role of R and R_L for the efficiency of the collective movement we considered two cases. In Fig. 8 it is shown the variation of the amplitude intensity with p_L for $v_L = 0.8$, $R_L = 200$, $R = 50$, and $v_L = 0.8$, $R_L = 50$, $R = 200$.

For small probabilities the collective pattern is better performed if the agents are capable to communicate in large distances. If the agents can communicate only at shorter distances then to improve the efficiency of the collective pattern the probability p_L has to increase.

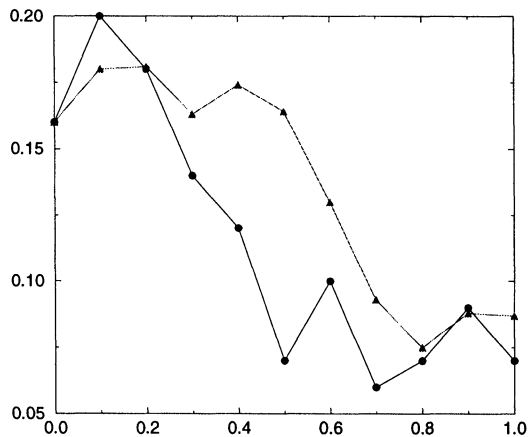


FIGURE 6 Amplitude of the main peak of the power spectrum as a function of p_L . The maximum around $p_L = 0.1$ indicates the situation of optimal coordination of the collective movement.

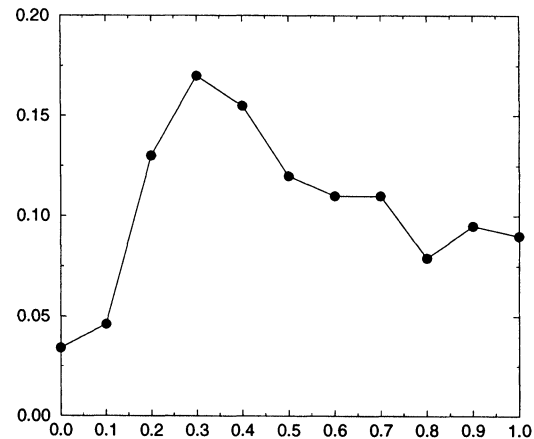


FIGURE 7 Amplitude of the main peak in the power spectrum as a function of p_L for the case $v_L = 0.8$, $R_a = 30$, $R_l = R_r = 100$.

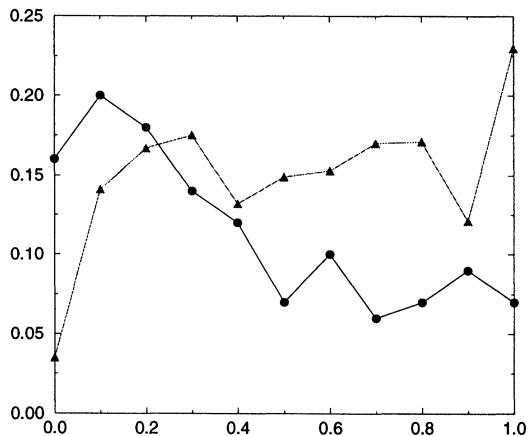


FIGURE 8 Amplitude of the main peak as a function of p_L for $v_L=0.8$ for the cases $R_L=200$, $R=50$ (triangles) and $R_L=50$, $R=200$ (circles).

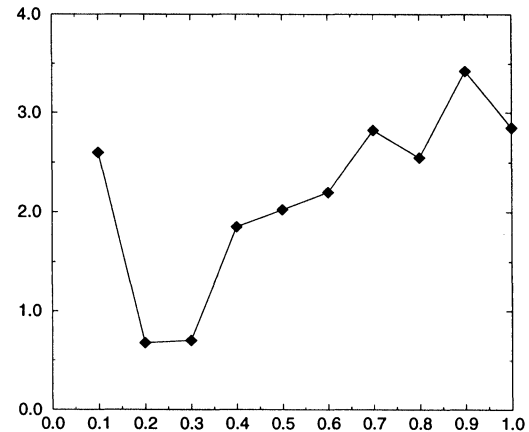


FIGURE 9 Percentage deviation of the position of the track finder with respect to the radius of the leader's path. The minimum around $p_L=0.3$ shows that the track finder optimally follows the leader's path in the situation where the coordination of the collective movement is maximal.

4 PATTERN RECOGNITION PROBLEM

From the construction of the model it is clear that the agents follow the leader without any knowledge about the shape of the leader's path.

The set of ordinary agents may be used to identify the shape of the leader's path by tracking its path in time. For that it is defined a "track finder" in the following way: At each time step it is identified the subgroup of ordinary agents which has perceived the leader in the perception region and is updated directly by the leader's rule. Next the position of the baricenter of this subgroup is calculated. The baricenter follows the leader approximately on the same path depending on the free parameters v_L , p_L , R_L , R . Keeping all the parameters but p_L fixed the system will move according to the collective movement associated with the value of v_L .

Clearly the position of the baricenter of the subgroup will depend on the coordination with which the collective movement is performed through the parameter p_L . The existence of a dynamically implemented collective movement implies that the baricenter should also perform a movement in time with some regularity reflected by the corresponding velocity correlation function. Therefore the question is how efficiently the baricenter tracks the path of the leader.

We have calculated the mean distance in time of the baricenter to the center of the leader's circular path as a function of p_L for the fixed configuration of the remaining parameters $R_a=30$, $R_l=R_r=100$ and $v_L=0.8$. The percentage deviation of the position of the track finder (baricenter) with respect to the radius of the leader's path is plotted in Fig. 9.

The minimum deviation is around $p_L=0.3$, the value of p_L which in this case corresponds to the maximal coordination of the collective movement. Therefore the pattern of the leader's path is optimally recognized by the track finder in the case of maximal coordination between the ordinary agents.

This fact reinforces the interpretation that the coordination of the realization of the collective movement is a result of the flow of information through the group of autonomous agents. As the agents are identical the noise in the communication, simulated by p_L , is determinant for the coordination of the collective movement for the whole group of agents.

The example presented here of the construction of a track finder is just one example of a quantity with a practical significance which depends directly on the coordination with which the collective movement is performed. An important case is to consider the group of ordinary agents composed by different

individuals, for instance with respect to the size of the perception sectors.

5 CONCLUSION

We have studied a model of communicating agents which are probabilistically coupled with a leader agent performing a stable and periodic movement.

As a result of the coupling different collective behaviors emerge from the elementary individual interactions between the agents.

Depending upon the velocity difference between the agents and the leader agent the system moves in a coordinated way adapted to the rescaled periodic information generated by the leader agent.

We explore the fact that the leader may be seen as a source of information which is sent to the group of autonomous agents. The group can transform this information through communication between agents. The probability coupling that exists between the group of agents and the leader agent simulates a noise in this information transfer.

The probability coupling also determines the efficiency or coordination of the emerging collective behavior. Nontrivial values of the probability are needed for the optimal performance of the collective movement. The range in which the agents may communicate is another factor that may change this coordination. We observe that the efficiency of the collective movement increases with the increasing range of the communication of the agents. We also observe that in certain cases to increase the range of communication between the leader and the agents works as an additional source of noise decreasing the coordination with which the collective movement is performed in time.

The system discussed here is a simple model for the dynamics of intercommunicating systems submitted to a noisy but periodic and stable perturbation. We conjecture that the observed results like the importance and interplay between noise (p_L) and anticipated response (v_L) represent more than a mere specificity of the model and should be related to similar phenomena in real systems for

which intercommunication between parts plays a crucial role.

Acknowledgments

V.V.I. and I.V.K. gratefully acknowledge the hospitality of the International Solvay Institutes for Physics and Chemistry and personally Prof. I. Prigogine. F.B. wants to acknowledge the financial support of the Brazilian Agency CAPES.

This work was supported by the Commission of the European Communities within the framework of the EU-RUSSIA Collaboration, in accordance with ESPRIT CONTRACT CTIAC-21042.

References

- [1] R. Beckers, O.E. Holland and J.L. Deneubourg. From local actions to global tasks: Stigmetry and collective robotics. In *Proceedings of Alife IV Conference*, Cambridge MA, 1994. MIT Press.
- [2] J.R. Buchi. *Finite Automata, Their Algebras and Grammars: Towards a Theory of Formal Expressions*. Springer-Verlag, siefkes d. edition, 1988.
- [3] A.W. Burks. Toward a theory of automata based on more realistic primitive elements. In Burks, A.W., Ed., *Essays On Cellular Automata*. University of Illinois Press, Urbana Illinois, 1970.
- [4] S. Goss, J.L. Deneubourg, R. Beckers and J.-L. Henrotte. Recipes for collective movement. In *Proceedings of 2nd European Conference on Artificial Life*, p.400, Brussels, 1993.
- [5] M.J. Mataric. From local interactions to collective intelligence. In Luc Steels, Ed., *Proc. of the NATO Advanced Study Institute on The Biology and Technology of Intelligent Autonomous Agents*, p. 275, Castel Ivano, Trento, Italy, March 1993. NATO ASI Series. Series F: Computer and Systems Sciences, Vol. 144.
- [6] L. Steels. The artificial life roots of artificial intelligence. Technical report, VUB, Brussels, November 1993.
- [7] T. Toffoli. and N. Margolus. *Cellular Automata Machines: A New Environment for Modelling*. MIT Press, Cambridge, Mass., 1987.
- [8] J. Urias. One-dimensional cellular automata as arithmetic recursions. In *Proc. of the NATO Advanced Study Institute*, pp. 109–110, 1989, *Physica D* **36**.
- [9] I. Antoniou, V. Basios. and F. Bosco. Probabilistic control of chaos: the renyi map under control. *Int. Jou. Bif. Chaos*, **6**(8): 1563–1573, 1996.
- [10] J. von Neuman. Probabilistic logics and the synthesis of reliable organisms from unreliable components. In Shannon, C.E. and McCarthy, J., Eds., *Automata Studies*. Princeton Univ. Press, 1956. *Annals of Mathematical Studies* N. 34.
- [11] S. Wolfram, Ed. *Theory and Applications of Cellular Automata*. World Scientific, 1986.
- [12] M. Wooldridge. and N.R. Jennings. Intelligent agents: Theory and practice. *Knowledge Engineering Review*, **10**, 1995. The Principia Cybernetica Project <http://pespmc1.vub.ac.be>.



Hindawi

Submit your manuscripts at
<http://www.hindawi.com>

