

Research Article

Experimental Verification of a Battery Energy Storage System for Integration with Photovoltaic Generators

Rajkiran Singh,¹ Seyedfoad Taghizadeh,¹ Nadia M. L. Tan,¹ and Saad Mekhilef²

¹Department of Electrical Power Engineering, Universiti Tenaga Nasional, Selangor, Malaysia

²Power Electronics and Renewable Energy Research Laboratory (PEARL), Department of Electrical Engineering, University of Malaya, Kuala Lumpur, Malaysia

Correspondence should be addressed to Nadia M. L. Tan; nadia@uniten.edu.my

Received 26 June 2016; Revised 20 September 2016; Accepted 22 December 2016; Published 24 January 2017

Academic Editor: Antonio J. Marques Cardoso

Copyright © 2017 Rajkiran Singh et al. This is an open access article distributed under the Creative Commons Attribution License, which permits unrestricted use, distribution, and reproduction in any medium, provided the original work is properly cited.

This paper presents the experimental verification of a 2 kW battery energy storage system (BESS). The BESS comprises a full-bridge bidirectional isolated dc-dc converter and a PWM converter that is intended for integration with a photovoltaic (PV) generator, resulting in leveling of the intermittent output power from the PV generator at the utility side. A phase-shift controller is also employed to manage the charging and discharging operations of the BESS based on PV output power and battery voltage. Moreover, a current controller that uses the $d-q$ synchronous reference frame is proposed to regulate the dc voltage at the high-voltage side (HVS) to ensure that the voltage ratio of the HVS with low-voltage side (LVS) is equivalent to the transformer turns ratio. The proposed controllers allow fast response to changes in real power requirements and results in unity power factor current injection at the utility side. In addition, the efficient active power injection is achieved as the switching losses are minimized. The peak efficiency of the bidirectional isolated dc-dc converter is measured up to 95.4% during battery charging and 95.1% for battery discharging.

1. Introduction

Current grid codes for low-voltage grid-connected PV systems consider a low PV penetration and in many countries stipulate the regulation for anti-islanding and total harmonic distortion of injected current to be less than 5%. A high penetration of PV systems will require strict adherence to the grid codes because a large amount of varying active power will result in frequency variations and eventually instability of the power grid. Therefore, the integration of battery energy storage system, a type of high energy density storage device, is needed to level the output power from PV generators. Moreover, future grid codes are expected to include the fault ride-through (FRT) capability and reactive power injection of the PV systems [1]. Battery energy storage systems could be employed to absorb active power from PV during the FRT conditions.

A bidirectional isolated dc-dc converter with high-frequency galvanic isolation is one of the technologies that enables the integration of energy storage devices such as

batteries and electric double-layer capacitors to the utility grid [2–6]. The bidirectional operation of the converter easily charges and discharges energy storage devices. Moreover, the high-frequency galvanic isolation increases the power density and the reliability of the energy storage system. The efficiency of the bidirectional isolated dc-dc converter has improved since the converter was introduced in 1991 [7]. At that time, the first generation of IGBT suffered from high switching losses. The performance of the latest-generation IGBT improved in device switching losses. Furthermore, superjunction MOSFET has a low on-state resistance $R_{DS[ON]}$ that further reduces conduction loss of the switching device [2].

A 6 kW, a 10 kW, and a 100 kW bidirectional isolated dc-dc converter achieved maximum efficiency of 96.9% [3], 97.4% [4], and 98.7% [5], respectively. The authors of [5] showed that, with the usage of silicon carbide MOSFETs, the performance of the bidirectional isolated dc-dc converter is greatly improved as compared to the dc-dc converter using silicon-based switching devices. The dc-dc converter operation is

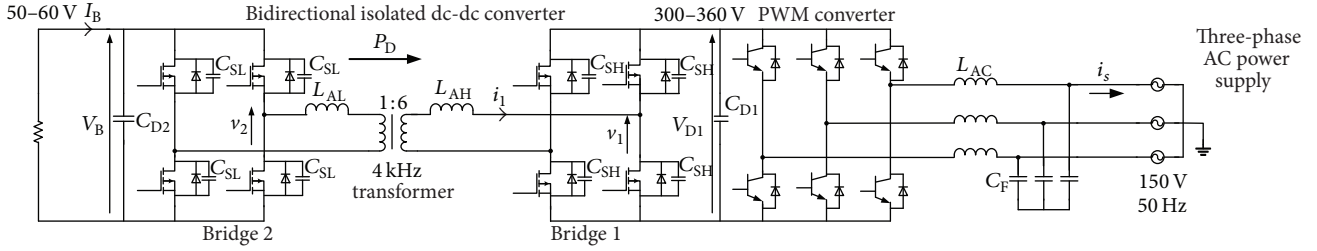


FIGURE 1: The experimental configuration of the BESS in charging mode. $L_{AC} = 5$ mH (7.85%) and $C_F = 1$ μ F, on a three-phase 150 V, 2 kW, and 50 Hz base.

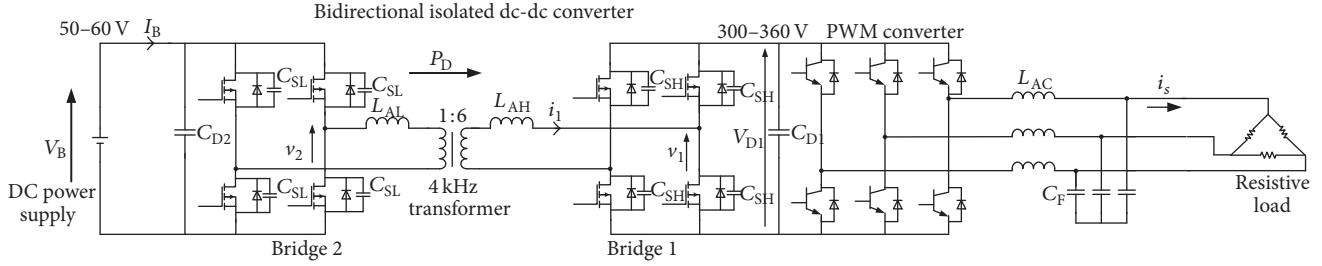


FIGURE 2: The experimental configuration of the BESS in discharging mode. $L_{AC} = 5$ mH (7.85%) and $C_F = 1$ μ F, on a three-phase 150 V, 2 kW, and 50 Hz base.

optimum only when the voltage ratio of the HVS and LVS is equal to the turn ratio of the transformer. Otherwise, the circulating current will be high, leading to an increase in switching loss due to high peak switching current and high turn-off overvoltage across the semiconductor switches. The circulating current should be minimized so that the efficiency of the converter is maintained high in applications with a broad range of operating voltage. Therefore, a reliable control system is required to adjust the voltage of HVS with respect to the voltage of LVS of the converter so that the voltage ratio of the HVS with LVS is close to the transformer turns ratio.

This paper describes a battery energy storage system (BESS) that consists of a battery unit, a bidirectional isolated dc-dc converter, and a PWM converter that can be applied to regulate the output power of a PV system. This paper verifies the feasibility of operating a 2 kW BESS that responds the changes of a varying PV output power. In order to achieve this purpose, a current controller that uses $d-q$ synchronous reference and also a phase-shift controller are employed. The main function of the current controller is to regulate the voltage at HVS to maintain the voltage ratio of the HVS with LVS equal to the transformer turns ratio. The phase-shift controller is also employed to control the charging and discharging modes of the battery based on PV output power and battery voltage. Consequently, the operation of the both control systems maintains the grid-injected power at a constant value. Reference [8] has shown only the simulation results of the proposed system. This paper aims to validate the proposed system by the construction of a laboratory prototype and to show that the controllers have fast response and are feasible to be integrated with a PV system.

2. Experimental System

Figures 1 and 2 present the experimental circuit of the charging and discharging modes of the proposed BESS, respectively. The system consists of a three-phase PWM converter, a 2 kW bidirectional isolated dc-dc converter, and a three-phase resistive load bank. The PWM converter is connected at ac side with a 150 V, 50 Hz power supply through ac-link inductors L_{AC} and filter capacitors C_F . The proposed operating voltage of the battery, V_B , varies between 50 V and 60 V, and at the HVS, V_{D1} is regulated between 300 V and 360 V to adjust the ratio HVS and LVS close to the transformer turns ratio. In Figure 1, a single-phase resistive load bank is used to represent the battery bank that is being charged. In Figure 2, a three-phase resistive load is connected in delta configuration at the ac side to verify the BESS in the discharging mode. Table 1 summarizes the system parameters.

The BESS is sized for active power injection of up to 2 kW. The power transfer, P_D , of the BESS can easily be controlled by adjusting the phase-shift angle δ between two ac voltages v_1 and v_2 and it is expressed as

$$P_D = \frac{V_{D1} V_B}{\omega L} \delta \left(1 - \frac{|\delta|}{\pi} \right), \quad (1)$$

where V_{D1} is the voltage at HVS, V_B is the battery voltage, ω is the angular switching frequency, and L is the total inductance including the leakage inductance of the transformer and auxiliary inductances referring to the high-voltage side. The dc-dc converter is operating in charging mode when voltage v_1 leads voltage v_2 . During the charging mode, δ is denoted as positive. When operating in the discharging mode, voltage v_2 leads voltage v_1 , and δ is denoted as negative.

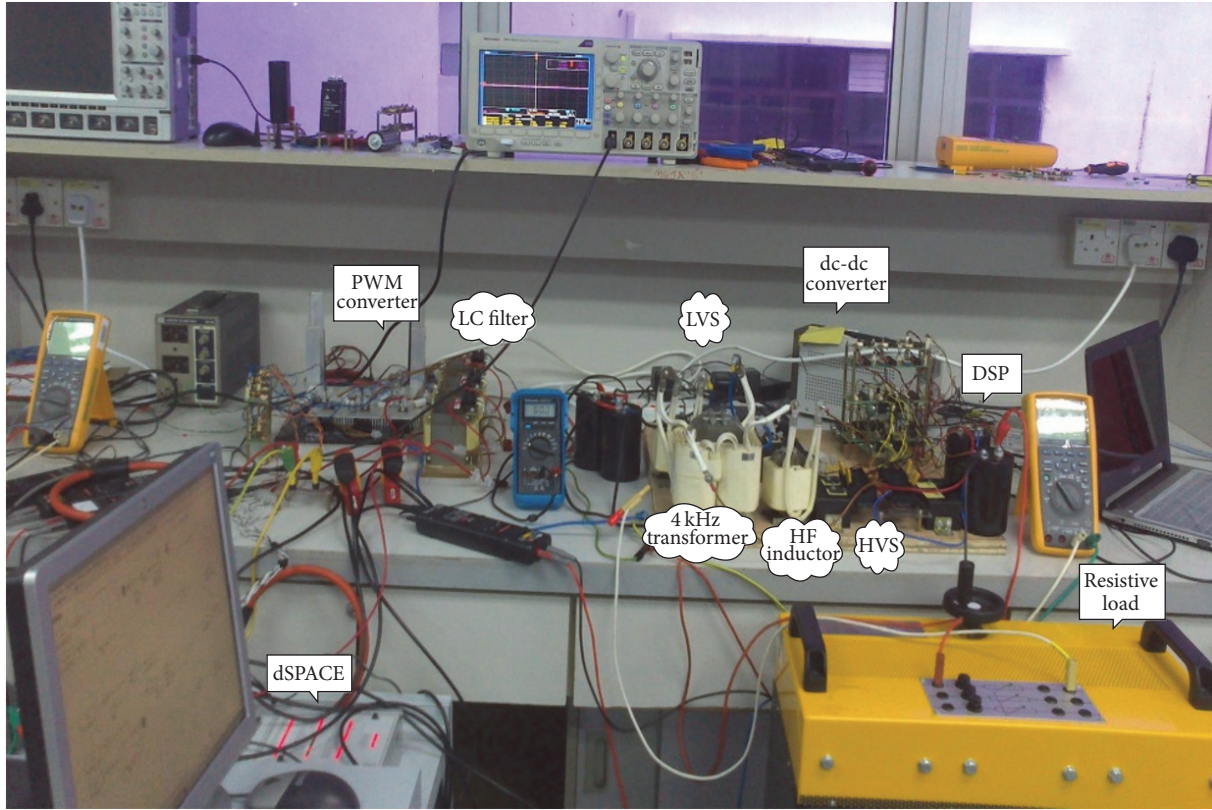


FIGURE 3: Photo of the experimental setup at the laboratory.

TABLE 1: Circuit parameters of the bidirectional isolated dc-dc converter.

Rated power	P_D	2 kW
Transformer turn ratio	N	6 : 1
Auxiliary inductor (HVS)	L_{AH}	40 μ H (1.55%)
Snubber capacitor (HVS)	C_{SH}	10 nF
DC capacitor (HVS)	C_{D1}	2 mF
Auxiliary inductor (LVS)	L_{AL}	40 μ H (55.83%)
Snubber capacitor (LVS)	C_{SL}	150 nF
DC capacitor (LVS)	C_{D2}	9.6 mF
Switching frequency	f	4 kHz

HVS is based on 360 V, 4 kHz, and 2 kW.

LVS is based on 60 V, 4 kHz, and 2 kW.

Bridge 1 consists of four 600 V, 40 A superjunction MOSFETs (TK40J60U). A film capacitor C_{SH} is connected in parallel with each of the superjunction MOSFETs to achieve zero-voltage turn-on and to minimize turn-off overvoltage across the switching devices. The on-state resistance, $R_{DS(ON)}$, is as low as 65 m Ω .

Bridge 2 consists of four 100 V, 200 A superjunction MOSFETs (IXFN200N10P). $R_{DS(ON)}$ is as low as 7.5 m Ω . A film capacitor C_{SL} is connected in parallel with each of the four MOSFETs to reduce its switching loss and to damp out any overvoltage.

The PWM converter consists of six 600 V, 20 A Field Stop IGBTs (FGH20N60UFD). The saturation voltage is as low as 1.8 V. The IGBTs have internal parallel diodes.

During the experiment, a three-phase portable power supply [KOSIJAYA, model: KA19530] was used for supplying the three-phase voltage. A real-time interface system dSPACE with DS1104 control card, which consists of Texas Instruments TMS320F240 subprocessor and the Power PC 603 e/250 MHz main processor, is used for implementing the proposed current controller. This dSPACE control desk works together with MathWorks MATLAB/Simulink R2011b real-time workshop and real-time interface (RTI) control cards to implement the proposed PWM controller. Another real-time system, Texas Instrument TMS F28335 controller board, is used as the controller of the bidirectional isolated dc-dc converter. Figure 3 presents the photo of the actual experiment setup for battery charging. Further details on the implementation of the controllers are presented in Section 3.

3. Control System

Figure 4 presents the overall control system of the proposed BESS. Even though the control system has been presented in [8], it is explained in this paper for the sake of completeness and easy referencing. The controller is designed to regulate the power at the low-frequency ac side or the so-called ‘‘point of common coupling (PCC)’’ of the dc-dc converter at 2 kW. The phase-shift controller monitors the output power of PV,

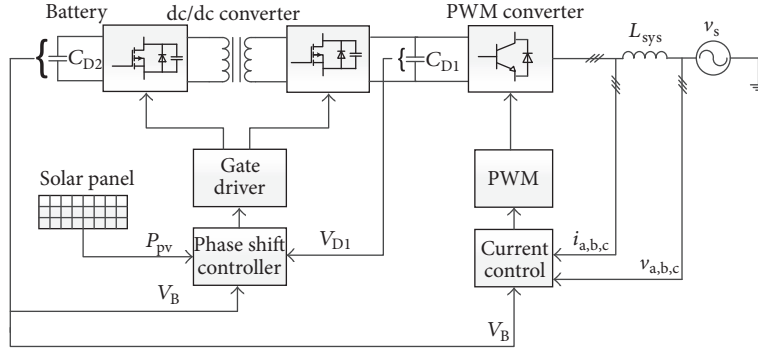


FIGURE 4: Configuration of the proposed control system.

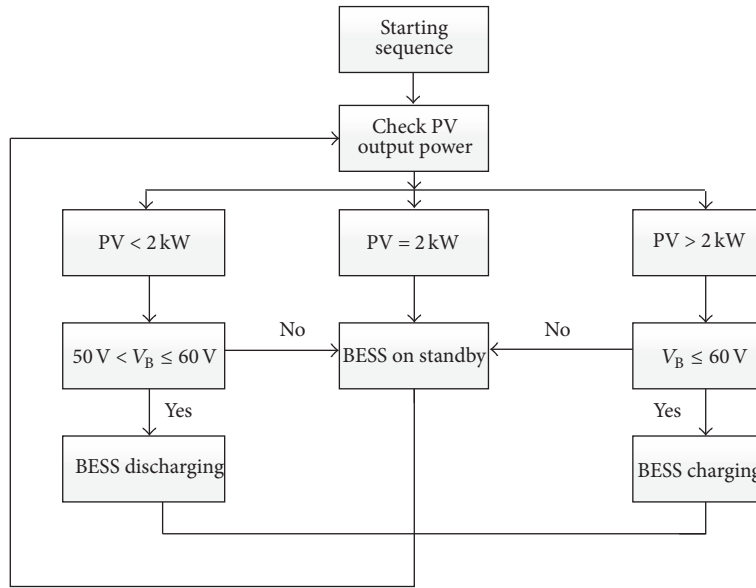


FIGURE 5: Determination of the three BESS operating modes.

P_{PV} , to determine the desired output power from the BESS such that

$$P_{BESS} = P_{PCC} - P_{PV}. \quad (2)$$

The controller also considers the battery voltage, V_B , and the HVS dc-link voltage, V_{D1} . Then it determines the required phase-shift angle, δ , needed to level the PV output power by charging or discharging the battery. Note that, in the experiment, the PV output power is arbitrary and the modeling of PV generation system is outside the scope of this paper.

Figure 5 shows the typical operating modes of a BESS, which are the charging, discharging, and standby modes. When the PV output power is less than 2 kW, the controller checks the battery voltage. If the battery voltage is between 50 V and 60 V ($50 \text{ V} < V_B \leq 60 \text{ V}$), the BESS is operated in the discharging mode. When the PV output power is more than 2 kW, the controller checks the battery voltage. If the battery voltage is equal to or less than 60 V ($V_B \leq 60 \text{ V}$), the BESS is operated in the charging mode to absorb the surplus power. When the output power of PV is 2 kW, the BESS goes

to standby mode by changing the phase-shift angle to zero. As shown in Figure 4, there are two other conditions where the BESS goes on standby mode to protect the battery bank from being overcharged and overdischarged:

- (i) When the battery voltage is less than 50 V and P_{PV} is less than 2 kW
- (ii) When the battery voltage is more than 60 V and P_{PV} is more than 2 kW

Figure 6 presents the control system of the bidirectional isolated dc-dc converter. The battery is charged or discharged by the bidirectional isolated dc-dc converter connected to the PWM converter. Accordingly, the control system determines the required power in order to regulate the PCC power at 2 kW. The principal of this operation is based on (1).

The controller monitors P_{PV} , V_{D1} , and V_B . By using (1), δ will be obtained for both charging and discharging modes as follows:

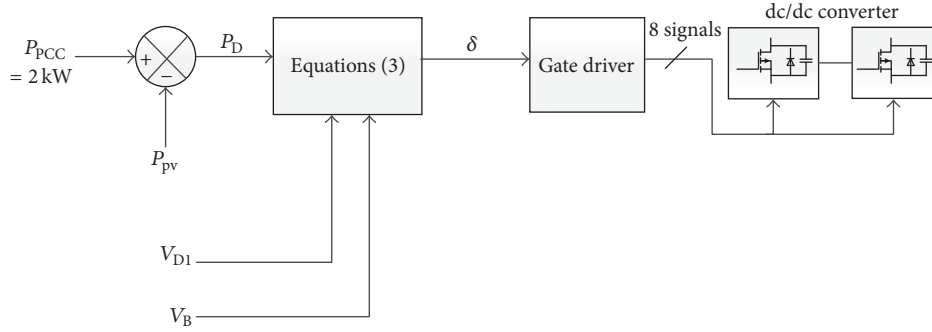


FIGURE 6: Phase-shift control of the bidirectional dc-dc converter.

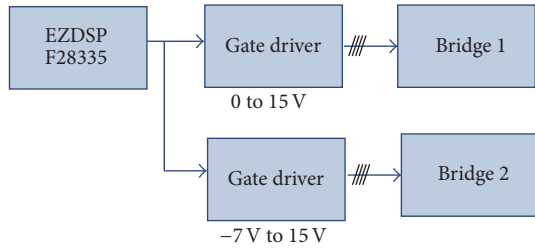


FIGURE 7: The overall controller connection of the dc-dc converter.

$$\begin{aligned} \text{Battery charging} \longrightarrow \delta &= -\frac{\pi}{2} + \sqrt{\frac{\pi^2}{4} + \frac{\omega\pi LP_D}{V_{D1}V_B N}} \\ \text{Battery discharging} \longrightarrow \delta &= \frac{\pi}{2} - \sqrt{\frac{\pi^2}{4} - \frac{\omega\pi LP_D}{V_{D1}V_B N}} \end{aligned} \quad (3)$$

Equations (3) are used to calculate the desired phase-shift angle to achieve the required active power during charging and discharging modes of the battery [3].

Figure 7 illustrates the overall controller connection of the dc-dc converter. The specified phase-shift modulation frequency is 4 kHz and the system clock frequency of the DSP F28335 is 150 MHz. The phase-shift angle is calculated in the DSP. The gate driver for HVS provides four signals of 0 to 15 V, while the gate driver for LVS provides four signals of -7 V to 15 V to avoid any accidental turn-on at the LVS because any parasitic inductance effect can be amplified with a higher current flow.

In order to minimize a high circulating current in the converter, a large mismatch between the transformer turns ratio and the voltage ratio of the HVS and LVS dc sides should be prevented. Therefore, a current controller is designed to regulate the voltage across the dc-link capacitor C_{D1} using the three-phase $d-q$ synchronous reference frame control technique. Accordingly, the controller monitors V_B and keeps V_{D1} at a level where the voltage ratio between V_{D1} and V_B is close to the transformer turns ratio.

Figure 8 shows the control system of the PWM converter. The employed control system regulates the three-phase currents, i_a , i_b , and i_c , to achieve unity power factor and to regulate the dc-link voltage V_{D1} at a reference voltage equal to the transformer turns ratio multiplied by the battery voltage

TABLE 2: The gains of the three PI controllers.

	PI ₁	PI ₂	PI ₃
Proportional gain K_p	0.1	0.9	0.9
Integral gain K_i	5	0.01	0.04

V_B . The detailed derivation of the controller model has been presented in [8]. Table 2 presents the parameters of each PI controller. The parameters K_p and K_i are selected by trial and error method.

Figure 9 presents the implementation of the PWM converter control system that consists of three main blocks that are the sensors, the dSPACE DS1104 controller, and the PWM converter. Two-phase ac currents and ac voltages are sent to the ADC port and the third current and voltage are calculated in MATLAB/Simulink environment. The measured HVS dc-link voltage is also sent to the ADC port. The carrier signal has a frequency of 10 kHz and the modulation index is 0.9. In addition, the dead time of the PWM converter is 1 μ s. The SPWM signals are fed to the gate drivers to trigger the IGBTs.

4. Experimental Results

The experimental prototype and the control systems are built based on Figures 1 and 2. The parameters and gains are summarized in Tables 1 and 2, respectively. The BESS system is designed to supply a constant power of 2 kW into the grid at the PCC.

Figure 10 illustrates the dc operating waveforms of the BESS during changes of the PV output power. The step change is assumed to be from 2.5 kW to 2.8 kW. The battery voltage is constant at 50 V, and subsequently voltage V_{D1} is regulated at 300 V by operation of the control system. The BESS is charged with 500 W when $P_{PV} = 2.5$ kW. Accordingly, the BESS is charged with 800 W when $P_{PV} = 2.8$ kW to level the PV output power at the PCC. The transient response caused by the step change in power demand lasts for 70 ms. This shows that the controller reacts fast and is feasible for PV output leveling.

Figure 11 shows the ac voltage and current waveforms at the HVS and LVS of the transformer when the BESS power transfer is changed from -500 W to -800 W. There are changes to the phase-shift angle from $\delta = -13.82^\circ$ (-0.241 rad)

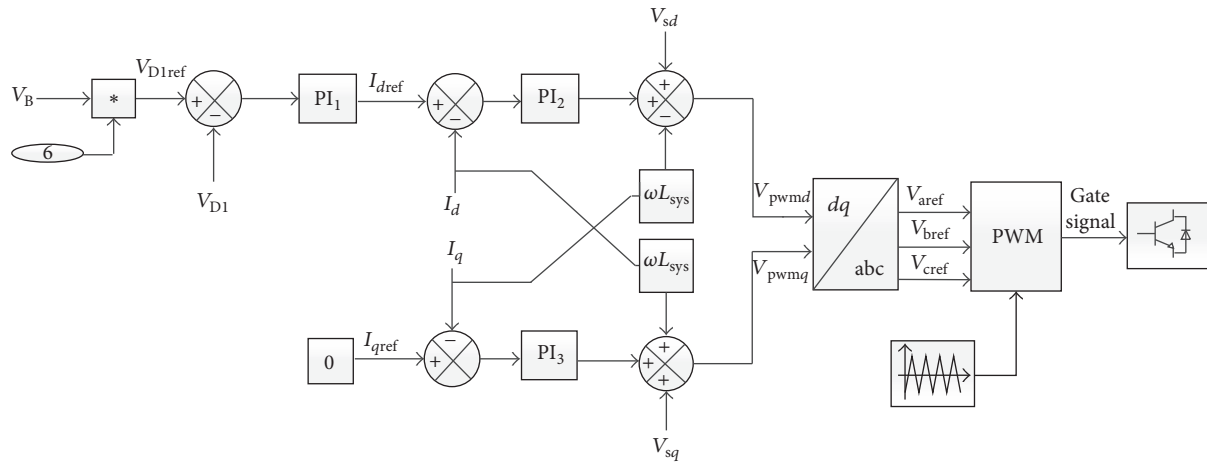


FIGURE 8: Current control of the PWM converter.

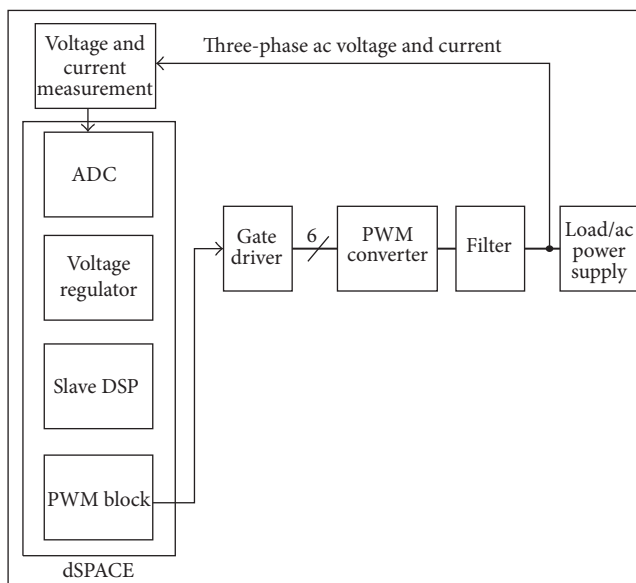


FIGURE 9: Block diagram of the dSPACE controlled PWM converter.

to $\delta = -21.5^\circ$ (-0.375 rad) during the change in power transfer requirement. The maximum voltages of transformer at the LVS and HVS are close to the transformer turns ratio, which are 50 V and 300 V, respectively. The LVS have a so-called “flat top” current that reduces the rate of change of the current i_2 over the time interval of conduction. Thus, this will minimize the peak switching current, which leads to a lower switch turn-off overvoltage and improve converter efficiency.

Figure 12 presents the operation of the BESS when PV output power varies from 1.5 kW to 1 kW. The battery voltage is constant at 60 V and voltage v_{D1} is regulated at 360 V by operation of the control system. Initially, when $P_{PV} = 1.5$ kW, $P_D = 500$ W to regulate the power at the P_{PCC} to 2 kW. When the PV output changes to 1 kW, the BESS transfers 1 kW to the PCC to level the PV output. The transient

response caused by the step change in power demand lasts for 100 ms, and the peak of the transient current at the LVS is 22 A.

Figure 13 shows that the magnitude of the phase-shift angle δ is increased from 8.63° (0.151 rad) to 21.9° (0.382 rad) during the discharging mode. Voltage v_2 leads v_1 in the discharging mode. Low-side transformer voltage is 60 V and high-side transformer voltage is 360 V. This shows that the controller is able to regulate the voltage of HVS according to the transformer turns ratio. At the HVS, current i_1 is low and hence would not cause significant amount of switching loss. The LVS current appears as having the so-called “flat top.” It reduces the rate of change of the current, i_2 , over the time interval of conduction. Thus, this will minimize the peak switching current, which can cause a higher switch turn-off overvoltage, thus improving converter efficiency.

Figure 14(a) presents the three-phase ac current during the charging of BESS. The transient of the ac current lasted for 200 ms. Figure 14(b) presents the ac voltage. The THD of voltage during charging of the C_{D1} is around 2% and during the discharging operation of the dc-dc converter the THD is 1%. The THD of grid current is measured with FLUKE 1735 Power Logger. The accuracy of this power logger is $\pm 0.2\%$ of its full scale.

Figure 15 shows the enlarged ac voltage and current during the charging operation of the BESS at the power of 1 kW and battery voltage of 60 V. The synchronized voltage and current waveforms show that the power factor is close to unity.

Figure 16 shows the converter efficiency when the BESS is operating in the charging and discharging modes. The efficiency of the dc-dc converter in the discharging mode is measured by choosing the LVS as the input and HVS as the output. On the other hand, the efficiency of the dc-dc converter in the charging mode is measured by choosing the HVS as the input and LVS as the output. At battery charging, the measured converter efficiency peaks at 95.4% at $P_D = -400$ W. At battery discharging, measured converter

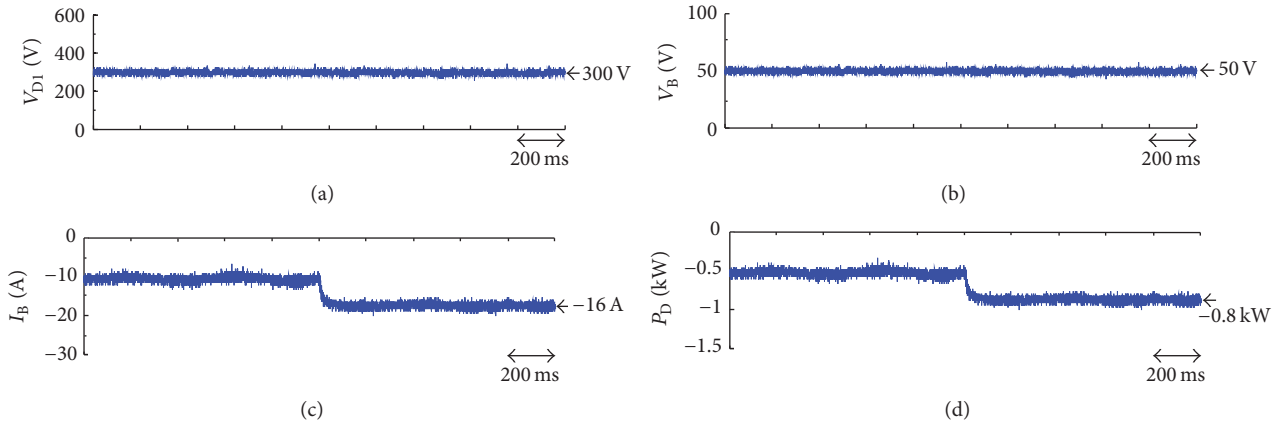


FIGURE 10: Experiment waveforms of the step change of PV output power from 2.5 kW to 2.8 kW at $V_B = 50$ V. (a) High-voltage side capacitor voltage. (b) Battery voltage. (c) Battery current. (d) BESS power.

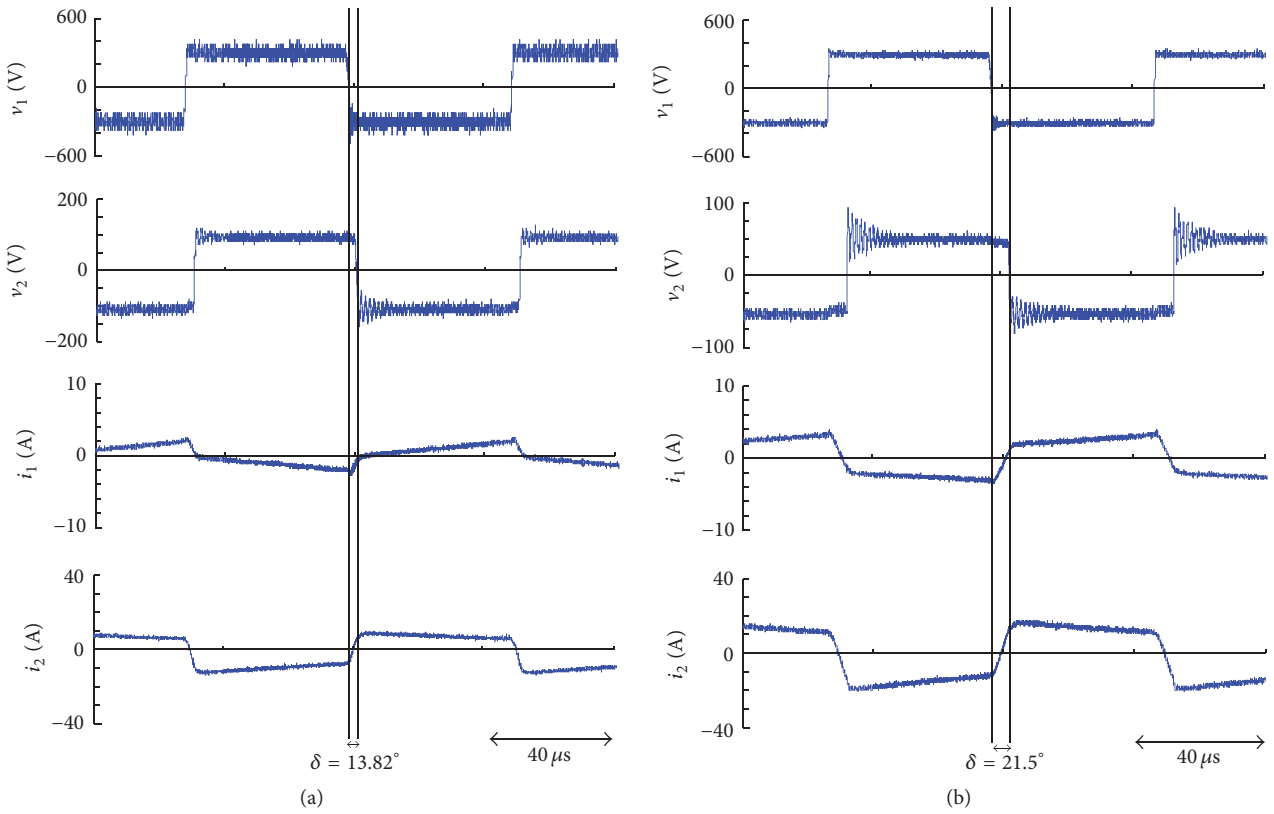


FIGURE 11: Experimental waveforms when the dc-dc converter is in charging mode. (a) $P_D = -0.5$ kW. (b) $P_D = -0.8$ kW.

efficiency peaks at 94.9% at $P_D = 600$ W. The battery voltage is 60 V for discharging mode and the battery voltage is 50 V for charging modes. Efficiency is low during low power transfer as the current is low.

At low current levels, the current could not reach the minimum required current for ZVS [4]. Thus, hard switching occurs. Furthermore, the efficiency increases when the current exceeds the minimum current for ZVS. At the rated power, the current increases, increasing the conduction losses and reducing the converter efficiency. The efficiency of the

dc-dc converter is measured with YOKOGAWA WT1800 Precision Power Analyzer. The accuracy of this power logger is $\pm 0.2\%$ of its full scale.

5. Conclusion

This paper proposed a 2 kW BESS for integration with a PV generator that is based on a bidirectional isolated dc-dc converter and a PWM. The feasibility of the proposed system is verified via experimental results. The proposed

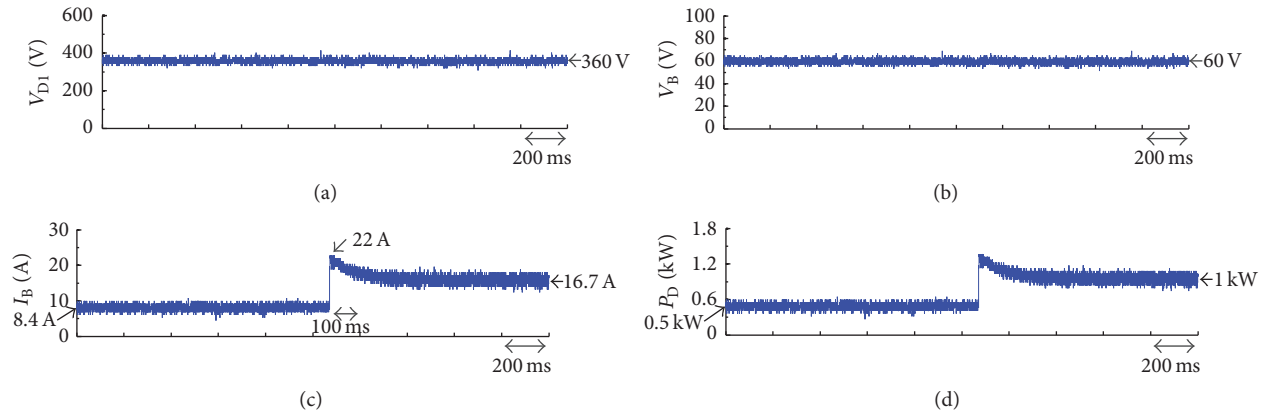


FIGURE 12: Experiment waveforms of the step change of PV output power from 1.5 kW to 1 kW at $v_B = 60$ V. (a) High-voltage side capacitor voltage. (b) Battery voltage. (c) Battery current. (d) BESS power.

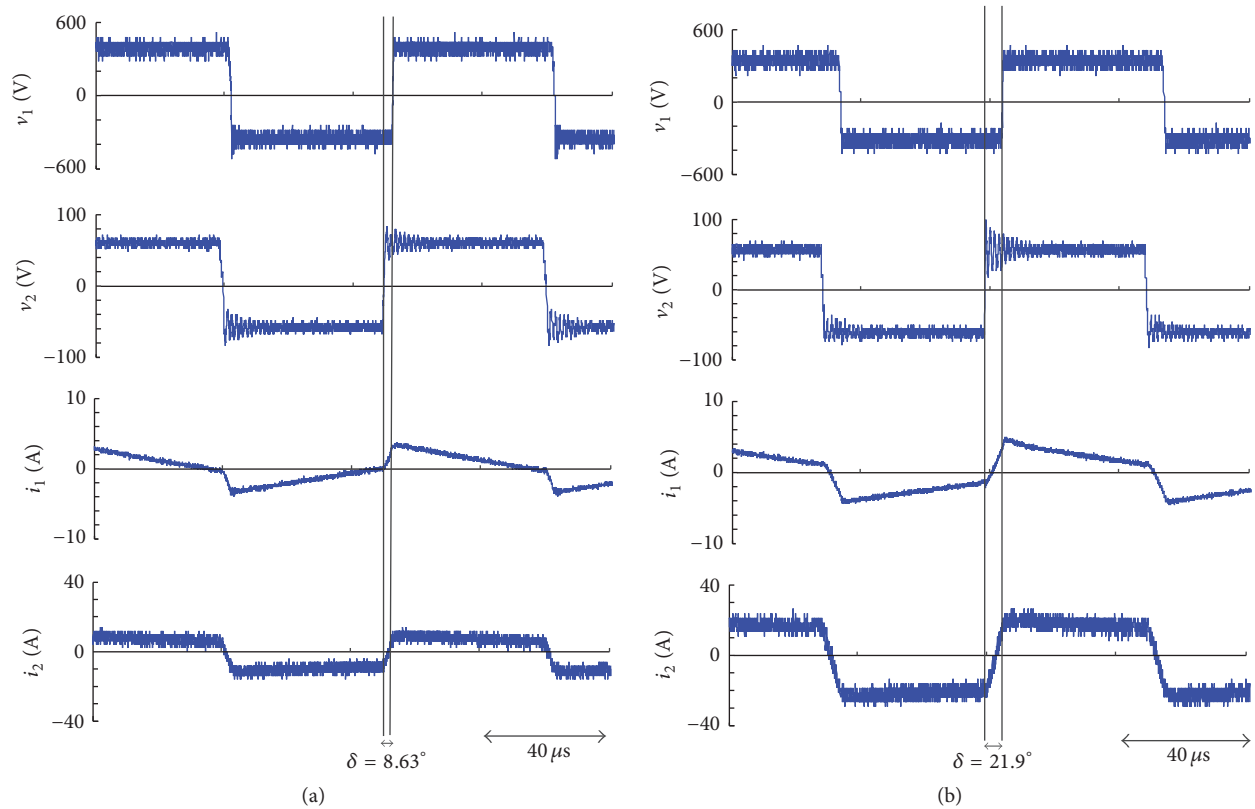


FIGURE 13: Experimental waveforms when the dc-dc converter is in discharging mode. (a) $P_D = 0.5$ kW. (b) $P_D = 1$ kW.

current controller regulates the voltage ratio of the HVS with LVS of the dc-dc converter equal to the transformer turns ratio. Accordingly, the switching losses are minimized to achieve an efficient power injection. The phase-shift controller manages the charging and discharging modes of the BESS to provide the required amount of power. The proposed BESS operates with unity power factor, injected current

total harmonic distortion of less than 5%, and fast dynamic response.

Competing Interests

The authors declare that there is no conflict of interests regarding the publication of this paper.

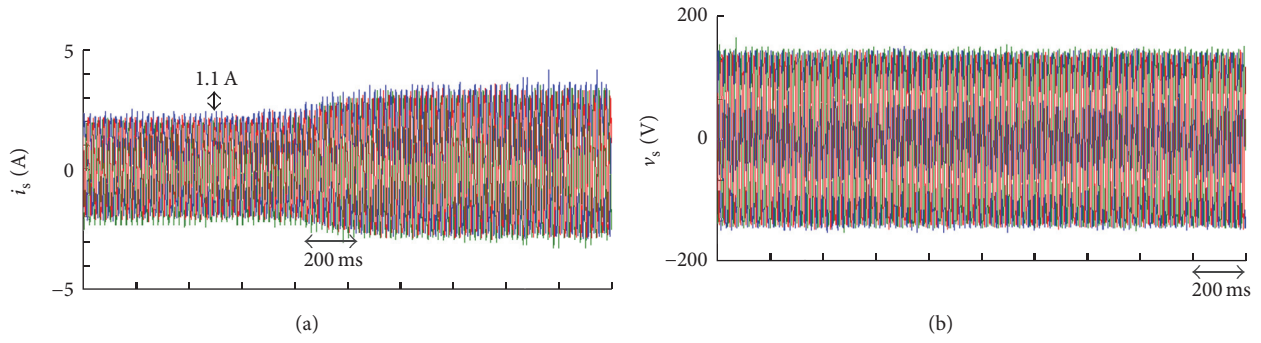


FIGURE 14: Variation of the charging mode from -0.5 kW to -0.8 kW. (a) Three-phase ac current. (b) Three-phase ac voltage.

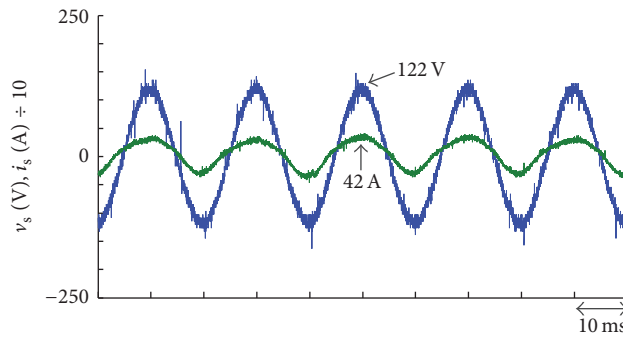


FIGURE 15: Ac voltage and current of phase-A during the charging operation of the BESS.

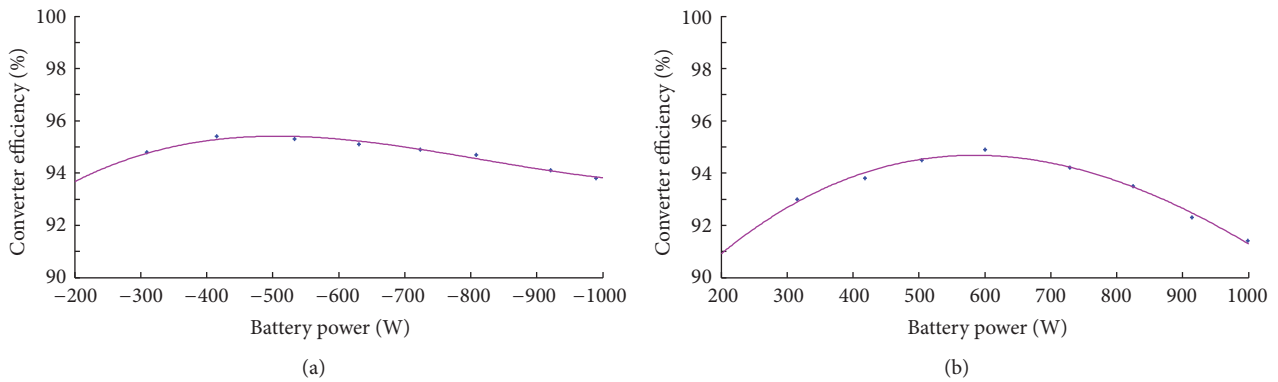


FIGURE 16: Measured dc-dc converter efficiencies. (a) Battery charging. (b) Battery discharging.

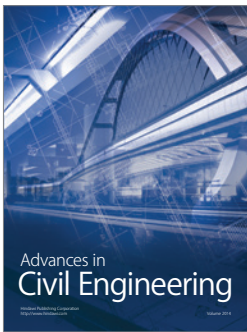
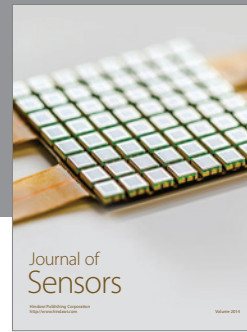
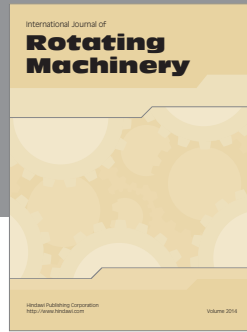
Acknowledgments

The authors wish to thank the Ministry of Higher Education (MOHE) and Universiti Tenaga Nasional for the financial support through FRGS/1/2012/TK07/UNITEN/02/11 and Internal Grant no. J510050610, respectively.

References

- [1] Y. Yang, P. Enjeti, F. Blaabjerg, and H. Wang, "Wide-scale adoption of photovoltaic energy: grid code modifications are explored in the distribution grid," *IEEE Industry Applications Magazine*, vol. 21, no. 5, pp. 21–31, 2015.
- [2] J.-S. Lai, B.-M. Song, R. Zhou, A. Hefner Jr., D. W. Berning, and C.-C. Shen, "Characteristics and utilization of a new class of low on-resistance MOS-gated power device," *IEEE Transactions on Industry Applications*, vol. 37, no. 5, pp. 1282–1289, 2001.
- [3] N. M. L. Tan, T. Abe, and H. Akagi, "Design and performance of a bidirectional isolated DC-DC converter for a battery energy storage system," *IEEE Transactions on Power Electronics*, vol. 27, no. 3, pp. 1237–1248, 2012.
- [4] S. Inoue and H. Akagi, "A bidirectional isolated DC-DC converter as a core circuit of the next-generation medium-voltage power conversion system," *IEEE Transactions on Power Electronics*, vol. 22, no. 2, pp. 535–542, 2007.
- [5] H. Akagi, T. Yamagishi, N. M. L. Tan, S.-I. Kinouchi, Y. Miyazaki, and M. Koyama, "Power-loss breakdown of a 750-V 100-kW 20-kHz bidirectional isolated DC-DC converter using SiC-MOSFET/SBD dual modules," *IEEE Transactions on Industry Applications*, vol. 51, no. 1, pp. 420–428, 2015.

- [6] N. M. L. Tan, S. Inoue, A. Kobayashi, and H. Akagi, "Voltage balancing of a 320-V, 12-F electric double-layer capacitor bank combined with a 10-kW bidirectional isolated DC-DC converter," *IEEE Transactions on Power Electronics*, vol. 23, no. 6, pp. 2755–2765, 2008.
- [7] R. W. A. A. De Doncker, D. M. Divan, and M. H. Kheraluwala, "A three-phase soft-switched high-power-density DC/DC converter for high-power applications," *IEEE Transactions on Industry Applications*, vol. 27, no. 1, pp. 63–73, 1991.
- [8] R. Singh, S. Taghizadeh, N. M. L. Tan, and J. Pasupuleti, "Battery energy storage system for PV output power leveling," *Advances in Power Electronics*, vol. 2014, Article ID 796708, 11 pages, 2014.



Hindawi

Submit your manuscripts at
<https://www.hindawi.com>

