


## RESEARCH ARTICLE

## Open Access



# Household air pollution and the lung microbiome of healthy adults in Malawi: a cross-sectional study

Jamie Rylance<sup>1,3\*</sup> , Anstead Kankwatira<sup>3</sup>, David E. Nelson<sup>4</sup>, Evelyn Toh<sup>4</sup>, Richard B. Day<sup>2</sup>, Huaiying Lin<sup>5</sup>, Xiang Gao<sup>5</sup>, Qunfeng Dong<sup>5</sup>, Erica Sodergren<sup>6</sup>, George M. Weinstock<sup>6</sup>, Robert S Heyderman<sup>3</sup>, Homer L. Twigg III<sup>2</sup> and Stephen B. Gordon<sup>1,3</sup>

## Abstract

**Background:** Domestic combustion of biomass fuels, such as wood, charcoal, crop residue and dung causes Household Air Pollution (HAP). These inhaled particulates affect more than half of the world's population, causing respiratory problems such as infection and inflammatory lung disease. We examined whether the presence of black carbon in alveolar macrophages was associated with alterations in the lung microbiome in a Malawi population.

**Methods:** Bronchoalveolar lavage samples from 44 healthy adults were sequenced using 16S rDNA amplification to assess microbial diversity, richness and relative taxa abundance. Individuals were classified as high or low particulate exposure as determined by questionnaire and the percentage of black carbon within their alveolar macrophages.

**Results:** Subjects in the low and high particulate groups did not differ in terms of source of fuels used for cooking or lighting. There was no difference in alpha or beta diversity by particulate group. *Neisseria* and *Streptococcus* were significantly more abundant in samples from high particulate exposed individuals, and *Tropheryma* was found less abundant. *Petrobacter* abundance was higher in people using biomass fuel for household cooking and lighting, compared with exclusive use of electricity.

**Conclusions:** Healthy adults in Malawi exposed to higher levels of particulates have higher abundances of potentially pathogenic bacteria (*Streptococcus*, *Neisseria*) within their lung microbiome. Domestic biomass fuel use was associated with an uncommon environmental bacterium (*Petrobacter*) associated with oil-rich niches.

**Keywords:** Respiratory microbiome, Household air pollution, Alveolar macrophage, *Petrobacter*

## Background

Globally, most inhaled particulate matter derives from the domestic combustion of biomass fuels such as wood, charcoal, crop residue and dung [1, 2]. This Household Air Pollution (HAP) is associated with 4.3 million deaths per year from respiratory disease, including 900,000 childhood deaths from pneumonia [3–6]. Alterations in microbial populations in the lung caused by particle exposure could explain increased rates of respiratory infection in subjects exposed to HAP. Inhaled particulates are

known to drive inflammation in the lung, to alter microbial binding to respiratory epithelium, and to act as vehicles delivering microbial molecules to the distal airways.

In healthy lungs, previously thought to be sterile environments, communities of bacteria, together with fungi and viruses form the microbiome. Variations in this microbiome may either reflect or drive mucosal inflammation and immune function [7]. Extensive sequencing of bacterial 16S rDNA from the lungs of healthy individuals has revealed the common presence of phyla such as Proteobacteria, Bacteroidetes, Actinobacteria and Firmicutes [8].

Study of the alterations in lung microbiota resulting from environmental exposures is a nascent field with the potential to explain the pathophysiological mechanisms

\* Correspondence: [jamie.rylance@lstm.ac.uk](mailto:jamie.rylance@lstm.ac.uk)

<sup>1</sup>Department of Clinical Sciences, Liverpool School of Tropical Medicine, Liverpool L3 5QA, UK

<sup>3</sup>Malawi-Liverpool-Wellcome Trust Clinical Research Programme, Blantyre, Malawi  
Full list of author information is available at the end of the article

of lung disease. Cigarette smoking does not appear to be associated with significant changes in the lung microbiome in a US cohort [9]. However, the effects of exposure to other environmental sources of particulates, particularly in low income countries, have not yet been described.

We hypothesised that, in healthy people, HAP would be associated with alterations in the lung microbiome in terms of diversity, richness and the relative abundance of various microbial taxa. Furthermore, prior comparative analysis of geographical differences in microbiota prevalence identified *Petrobacter* in more than a third of a group sampled in Malawi, but none in a US cohort. *Petrobacter* is a gram negative, aerobic bacterium identified in 2004 from oil reservoir samples. Given this niche, we hypothesised that the prevalence in a Malawi group would be due to inhalation of smoke from biomass fuel use: we present evidence of this association in this paper [10, 11].

## Methods

### Participants and bronchoscopy

Healthy, non-smoking, HIV-negative adults aged 18 to 50 were recruited from peri-urban communities in Blantyre, Malawi from May 2009 to December 2012. Ethical approval was granted by the College of Medicine REC, University of Malawi and Liverpool School of Tropical Medicine REC (P.03/10/916 and 09.69 respectively), and written consent was obtained. Bronchoalveolar lavage (BAL) fluid was obtained as previously described [12], filtered through gauze and centrifuged immediately at 400 g for 10 min. The cell pellet was processed as described below. Acellular supernatants were stored at -80 °C for batch extraction and sequencing. Structured interviews determined participants' demographics and type of fuel used for heating, cooking and lighting. The stated "main source" of each was used as a classifier in analyses.

### Quantification of particulate within cells, and participant selection

The BAL cell pellet was re-suspended in RPMI 1640, and cells were counted using a Neubauer chamber. Cytospin preparations of macrophages (Thermo Shandon, UK) were imaged at 40x by light microscopy. Fifty fields from each experiment were analysed using freely available digital image analysis software (Image SXM, [www.ImageSXM.org.uk](http://www.ImageSXM.org.uk)), as previously described [13]. The samples for this study were drawn from a larger bronchoscopic study of 128 volunteers, all of whom had particulate imaging and quantification. Samples were sequentially identified for microbiome analysis from the highest and lowest particulate of available and adequate

BAL samples. No further stratification or selection strategy was used.

### Microbiome analysis

DNA was extracted from BAL supernatants using DNase/RNase free reagents and materials and a DNeasy kit (Qiagen, CA, USA). Ribosomal 16S subunit rDNA sequencing was performed at the Genome Institute (Washington University, MO, USA) as previously described [9]. Briefly, 27 F-534R primers for the hyper-variable regions 1 to 3 (V1V3) were utilized. The 16 s rDNA sequencing was performed on the Roche 454 FLX Titanium platform and processed with the Mothur package v1.29 [14] based on its standard operative procedure ([http://www.mothur.org/wiki/454\\_SOP](http://www.mothur.org/wiki/454_SOP)). Briefly, sequence reads were demultiplexed into individual samples based on perfect match to the barcode sequences. Primers and barcodes were trimmed from each read and low-quality and chimeric sequences were removed with default Mothur parameters with one minor adjustment: the trump symbol was not included at *filter.seqs()* step due to our observation that its resulting in over-removal of aligned reads. The remaining high-quality 16S sequences ( $420 \pm 15.9$  bp) from each sample were classified using the RDP Classifier v2.5 with the default threshold value of 0.8 from phylum to genus level [15].

### Data analysis

Comparison of alveolar macrophage black carbon content with subject demographics: Two-way contingency tables were created using high/low alveolar macrophage black carbon content as one category and subject demographics as the other category. Forty-four demographics features include sex, cook fuel, cook location, heat, smoking, light fuel, and living conditions were examined. Fisher's exact test was applied for the analysis [16].

Microbiome Analysis: To account for the uneven sequencing depth of each sample, all 44 samples were normalized using subsampling without replacement at depth 843 reads, and the subsampling was repeated for 10 times. The averaged read count among the 10 permutations was used in subsequent analysis. Alpha diversity richness was measured using Observed taxa number, Chao 1 and ACE indices, and diversity evenness was assessed using Shannon, Simpson's (1-D), and Pielou indices [17]. These were compared between particulate groups using Wilcoxon Rank Sum tests. Difference of alpha diversity between groups was analysed by linear model with and without confounding factors, such as age, gender, cooking location, type of cook fuel and light fuel. Beta-diversity was visualized by non-metric multidimensional scaling using Bray-Curtis dissimilarity [18, 19] by the R *ecodist* package [20]. The

PERMANOVA test in the R *vegan* package was used to test whether high biomass and low biomass cohorts form distinct clusters based on Bray-Curtis dissimilarities among the samples [21]. Multivariate dispersion of groups was compared using the *betadisper()* command in R *vegan* package to test for homogeneity of variance in high biomass and low biomass cohorts [22].

Differences in the abundance of specific genera between groups was analysed using negative binomial (NB) models and adjusted for differences in age, gender, cooking location, and smoking status prior to 6 months before the study (all participants were non-smokers for the 6 months immediately prior). To filter extremely low abundant taxa in our analysis, we limited this analysis to bacteria that were present in greater than 1 % abundance in at least one cohort.

## Results

### Participants

Forty-four participants were selected for 16S RNA sequencing (23 from low particulate and 21 from the high particulate group as determined by alveolar macrophage carbon content from an available set of 128 samples (representative images are shown in Fig. 1). Baseline characteristics are given in Table 1. Participants in the low and high particulate groups did not differ significantly in terms of sex, BMI, lung function, source of fuels used for cooking or lighting, or bronchoalveolar lavage differential cell counts (see Table 1). High particulate individuals were older (mean 34.1 years vs. 29.2 years,  $p = 0.03$ ). All individuals did have a potential domestic source of particulate exposure for either cooking or lighting.

### Alpha and beta diversity

The mean total of high quality sequences was 7268, and was similar in low and high particulate groups (7928

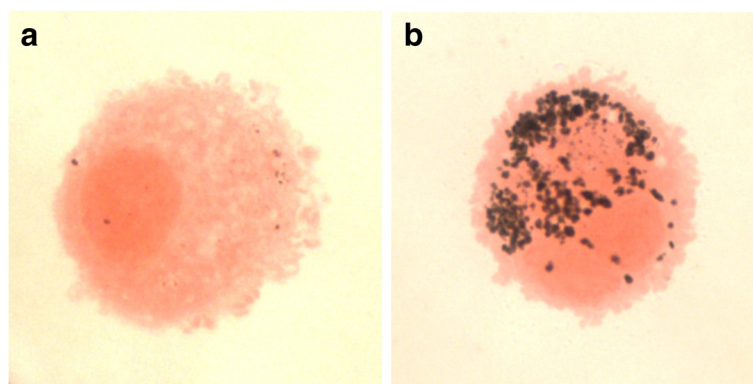
[SD 4283] vs 6545 [SD 3183] respectively). There was no difference in alpha diversity metrics between low and high particulate groups by any measure at either genus or phylum level (Observed taxa number, Chao 1, ACE indices, Shannon, Simpson's (1-D), and Pielou all  $p > 0.05$ ).

Beta diversity was no different in low and high particulate groups for genus level (PERMANOVA  $p = 0.209$ ). Analysis on phylum level shows no difference between low and high particulate groups (PERMANOVA  $p = 0.397$ ). Interestingly, when dispersion of the two communities was analysed, the low particulate population tended to be more spread out compared to high particulate group, though this did not quite reach statistical significance (average distance to centroid: 0.544 for the low biomass group, 0.484 for the high biomass group,  $p = 0.096$ ) at genus level.

### Microbial differences between low and high particulate groups

There were no significant differences between low and high particulate groups at the phylum level (data not shown).

Table 2 shows the relative abundance of the twenty genera represented at a frequency of 1 % or more of the total sequence reads. *Neisseria* abundance was significantly associated with the high particulate group, accounting for 4.98 % (SD 7.71) of total reads compared with 1.00 % (1.80) in the low particulate group ( $p = 0.01$ ). This relationship was maintained after adjustment for age, sex, and cooking location ( $p = 0.046$ ). *Tropheryma* was identified significantly less frequently in the high compared with low particulate group (0.97 % [2.99] vs 13.37 % [29.5] respectively,  $p = 0.046$  unadjusted and  $p = 0.01$  adjusted). *Streptococcus* was observed at higher relative abundance in the high particulate group (13.71 % [13.09] vs 6.77 % [7.28]); this was non-significant in the



**Fig. 1** Representative images of macrophage staining and particulate density. *Ex vivo* alveolar macrophages have undergone cytospin preparation, and staining with Fields B. Panels **a** and **b** show representative 40x light microscopy images of macrophages from low and high particulate groups respectively

**Table 1** Characteristics of participants classified as low and high macrophage particulate burden

	Low particulate (n = 23)	High particulate (n = 21)	p
Age, mean years (SD)	29.2 (7.7)	34.1 (6.8)	0.03
Sex, female (%)	9 (39)	12 (57)	0.37
Ethnicity – African, n (%)	23 (100)	21 (100)	-
BMI, mean (SD)	22.4 (4.2)	22.4 (2.6)	0.97
FEV1 % predicted, mean (SD)	96.2 (15.2)	98.2 (9.7)	0.62
FVC % predicted, mean (SD)	96.3 (15.1)	100.4 (9.5)	0.31
Cooking, n (%)			
Electricity only	2 (8.7)	0 (0)	0.60
Charcoal stove	14 (60.9)	13 (61.9)	.
Wood	7 (30.4)	8 (38.1)	.
Lighting, n (%)			
Electricity only	6 (26.1)	4 (19.1)	0.11
Candle mostly	10 (43.5)	4 (19.1)	.
Paraffin mostly	7 (30.4)	13 (61.9)	.
BAL differential count, % (SD)			
Macrophage	95.5 (4.6)	95.3 (3.2)	0.85
Lymphocyte	4.0 (4.1)	4.2 (2.6)	0.87
Macrophage carbon, % (SD)	0.1 (0.1)	2.5 (1.8)	<0.0001

Data are presented as n (%) or mean ± SD. Significance testing used Fisher's exact tests

BMI Body Mass Index, SD standard deviation

unadjusted analysis ( $p = 0.062$ ), but significant ( $p = 0.045$ ) after adjustment for potential confounding variables. *Ralstonia* appeared more abundant in high particulate groups, only before adjustment ( $p = 0.027$ , after adjustment  $p = 0.991$ ).

### Petrobacter in Malawi

A comparative analysis of the lung microbiome in Malawian and US samples identified *Petrobacter* as commonly isolated amongst the Malawian participants (17/44). Given both the original and recent descriptions of this organism in oil reservoirs, we hypothesised that *Petrobacter* prevalence could be explained by exposure to domestic fuel combustion, in particular to paraffin for lighting [10, 11]. Therefore, we analysed individual factors which might associate with *Petrobacter* (see Table 3), particularly in relation to domestic biomass fuel exposure. For those participants, who used electricity exclusively for lighting, have significantly lower bacteria abundance ( $0.025 \pm 0.080$ ) compared to those people who use candle, no-glass paraffin lights, instead ( $4.61 \pm 9.26$ ,  $p = 0.00044$ ). Cooking predominantly outside rather than indoors was associated with lower copy numbers (cooking outdoor  $0.50 \pm 1.20$  vs. cooking indoor  $5.53 \pm 10.20$ ,  $p = 0.014$ ).

**Table 2** Genus level differences between low and high particulate groups

	Reads, % of total (SD)		p value	
	High	Low	Unadjusted	Adjusted
<i>Streptococcus</i>	13.71 (13.09)	6.77 (7.28)	0.062	0.045*
<i>Prevotella</i>	7.28 (7.95)	7.61 (11.00)	0.938	0.899
<i>Tropheryma</i>	0.97 (2.99)	13.37 (29.50)	0.046*	0.006*
<i>Paenibacillus</i>	4.68 (11.37)	3.04 (9.67)	0.702	0.355
<i>Corynebacterium</i>	5.43 (11.84)	2.22 (4.11)	0.127	0.498
<i>Petrobacter</i>	3.78 (8.83)	3.37 (8.08)	0.924	0.560
<i>Acidovorax</i>	3.12 (12.28)	4.02 (8.31)	0.825	0.198
<i>Neisseria</i>	4.98 (7.71)	1.00 (1.80)	0.010*	0.043*
<i>Propionibacterium</i>	2.86 (4.72)	2.03 (4.21)	0.592	0.430
<i>Veillonella</i>	2.50 (3.52)	2.28 (3.25)	0.907	0.763
<i>Sphingomonas</i>	1.68 (2.62)	2.37 (3.39)	0.591	0.909
<i>Ralstonia</i>	0.15 (0.40)	3.70 (17.05)	0.027*	0.991
<i>Bacillus</i>	1.67 (3.10)	1.80 (4.97)	0.917	0.619
<i>Akkermansia</i>	1.88 (2.85)	1.43 (1.71)	0.482	0.221
<i>Fusobacterium</i>	1.22 (2.39)	1.70 (2.96)	0.684	0.303
<i>Actinomyces</i>	1.41 (2.41)	1.20 (2.05)	0.825	0.980
<i>Porphyromonas</i>	1.24 (1.99)	1.27 (2.87)	0.984	0.784
<i>Gemella</i>	1.66 (2.05)	0.66 (0.81)	0.055	0.338
<i>Staphylococcus</i>	0.98 (1.98)	1.14 (2.32)	0.838	0.677
<i>Cloacibacterium</i>	0.79 (2.63)	1.21 (4.43)	0.775	0.129

The relative abundance of bacteria in the lung microbiome was compared by using negative binomial test. Raw and adjusted p values are given.

Adjustments were made for differences in age, gender and cooking location, between high and low biomass groups

\*denotes significant at  $p < 0.05$ . Rows are presented in descending order of relative abundance

## Discussion

Our study found that high particulate exposure as defined by alveolar macrophage carbon content was associated with altered relative abundance of bacteria within the lungs of healthy Malawian adults. Specifically, we report higher proportions of *Neisseria* and *Streptococcus*,

**Table 3** Associations of *Petrobacter* abundance in the lung microbiome of healthy Malawians

	Petrobacter abundance (%)		p
	Yes	No	
Sex: female	6.32 ± 10.37	1.32 ± 5.53	0.40
Cooking fuel: electricity only	0 ± 0	3.74 ± 8.51	<0.001*
Cooking location: mostly outdoor	0.51 ± 1.20	5.53 ± 10.20	0.015*
Lighting fuel: electricity only	0.025 ± 0.080	4.61 ± 9.27	0.0004*
"Ex-smoking" status	4.36 ± 9.06	0 ± 0	0.79

GLM with negative binomial model shows associations of *Petrobacter* within the lung microbiome of Malawians, focussing on potential exposures to particulate exposures from domestic fuel use. The relative abundance of *Petrobacter* in each cohort was recorded as mean ± standard deviation \*significance at  $p < 0.05$  level

and lower proportions of Tropheryma. However, lung microbiome diversity and the relative abundance at the phyla level were not significantly different based on our current sample size. Petrobacter was more abundant in individuals who used biomass fuels for cooking or lighting than in those who did not. Finally, particulate matter in alveolar macrophages did not directly correlate with biomass exposure as determined by questionnaire, suggesting in this small study that other factors contributed to alveolar macrophage particulate ingestion. These likely include ingress of pollution from neighbouring homes, traffic pollution when commuting to work and occupational exposures.

This study provides a novel analysis of the lung microbiome from individuals in a low income country with exposure to high biomass fuels. We characterised high particulate exposures according to the particulate burden in the cells of the distal airways, which reflects the cumulative exposure to respirable-size particulates. This is likely to be more relevant to changes in the microbiome than air sampling methods [23]. We did not find any significant differences in the lung microbiome *as a whole* between high and low particulate groups. However, both richness and abundance of the lower respiratory microbiome may be significantly altered by sampling techniques which vary in their potential for introducing “carryover” contamination from the upper airways [24]. Individual lower respiratory tract microbiome demonstrates less similarity to that in other individuals than to the upper respiratory tract of the same person [9, 25, 26]. Nevertheless, samples obtained directly from explanted lungs and those taken indirectly by bronchoscopy demonstrate similar patterns [24]. Our study did not include sampling of the upper airway. Therefore, one cannot determine conclusively whether our BAL findings reflect true differences in the lung microbiome or differences in upper airway carriage between subjects with low and high exposure to particulates. However, since micro-aspiration is common in humans [17], it is likely that a true lung microbiome will contain many of the same taxa found in the oral cavity. Our study was performed on stored samples: not all of the potential environmental controls were available. However, since all subjects underwent the same bronchoscopy protocol, findings between high and low biomass fuel groups are highly likely to represent non-artefactual differences. Sterile saline controls from the bronchoscope using the same kit as this study have been reported, and contain a very low number of reads [27].

Reduced diversity of the lung microbiome has been seen in disease states, such as COPD, [24] and with medical treatments, such as inhaled corticosteroids [28]. In our HIV-negative, healthy volunteers, however, we found no significant differences in diversity or richness between high and low particulate groups, mirroring findings of

comparisons between smokers and non-smokers in the US [9]. Our study is compatible with prior descriptions of high diversity in the lung microbiome, with Streptococcus and Prevotella most frequently represented [9, 24].

Despite the absence of differences in the global lung microbiome between high and low particulate exposed subjects, interesting differences in specific taxa were observed. Streptococcus was more abundant in high particulate exposed participants after adjustment of potential confounders. In humans, ambient air pollution increases the risk of pneumonia in adults and children, [29, 30] and is commonly caused by *Streptococcus pneumoniae*. Analogous changes occur in cigarette smokers [31]. Bronchial epithelium exposed to urban particulates demonstrates increase expression of platelet activating factor and *S. pneumoniae* binding [32]. Nasopharyngeal carriage of *S. pneumoniae* is high in Malawi, occurs early, and pathogen specific mucosal T-cell regulation may contribute to prolonged carriage [33]. High levels of Streptococcus have also been demonstrated in the upper airway microbiome in a case-control study of infants in Ecuador [34]. Similarities with the Malawian study are low levels of pneumococcal immunisation and antibiotic use, and significant rural poverty. Taken together, these studies would provide a mechanistic link between our findings and the epidemiological associations of particulate concentration and pneumonia incidence.

Neisseria was also more prominent in high particulate group. This organism is not usually considered in the context of the lower airways, although serogroup Y has been associated with pneumonia in the elderly and Army recruits [35]. Nasopharyngeal carriage of *N. meningitidis* is increased amongst those exposed to cigarette smoke, [36] and *ex vivo* human epithelial cell models demonstrate bacterial binding is also increased [37]. The role of other ambient particulates is not well defined.

Tropheryma showed the inverse relationship, in that it was more frequently represented in the low particulate group. The pathogenic significance of this is uncertain: while *T. whipplei* is the aetiological agent of Whipple's disease, it is commonly found in health in other studies of lung microbiome [9]. It occurs in especially high levels in microbiome studies of HIV-infected individuals from the US [38]. However, the lower levels in our particulate exposed healthy volunteers is unexplained.

While we hypothesised that particulate exposure could alter the microbiome, it is also possible that difference in the microbiome could affect particulate uptake in macrophages through effects on immune activation and clearance responses [39].

#### **Petrobacter and fuel use**

The finding of Petrobacter, an unusual organism associated with fossil fuels, in lung lavage led us to speculate

that biomass fuel use could be the source of this bacterium. Our analysis demonstrates the presence of *Petrobacter* is negatively associated with use of clean fuel (electricity) for cooking and lighting, and with practices that reduce household air pollution exposure (i.e. cooking outside). This, and the tendency to be increased in females, who are most highly exposed to HAP, [2] suggests that *Petrobacter* is associated with burning of biomass fuel in Malawians. Only recognised as a genus in 2004, *Petrobacter* are non-spore forming gram negative aerobic rods with flagella [10]. First isolated from an Australian terrestrial oil reservoir, the organism appears tolerant of high temperatures, and there are no relevant reports of human disease or pathological association. Overall, it is plausible, and supported by our study, that *Petrobacter* in the lungs derives from biomass fuels. Interestingly, there was no difference in the amount of *Petrobacter* in BAL from individuals with high and low particulate matter in alveolar macrophages. This may suggest that other sources of lower airway particulate matter are more important than using oil for cooking (i.e. use of other fossil fuels for cooking and heating, tobacco smoking).

## Conclusions

There are significant differences in the composition of the lung microbiome of Malawians with differing levels of particulate exposure as determined by macrophage carbon content. These differences might contribute to the excess respiratory infections associated with particulate exposure. We have further demonstrated that the finding of *Petrobacter* in the lung is associated with household biomass fuel exposure. Interventions to improve air quality have the potential to alter the microbiome of the lower respiratory tract and ultimately improve the lung health of Malawians.

## Acknowledgements

The authors would like to thank the participants at Queen Elizabeth Central Hospital, Blantyre and staff at MLW especially Rose Malamba for their help with volunteer recruitment and bronchoscopy. We also thank Ruichen Rong's contribution to the initial stage of the data analysis.

## Funding

This work was funded and supported by: Wellcome Trust grant 086756/B/08/Z (JR); a Wellcome Trust Project Grant 083606/A/07/Z (RSH); a strategic award from the Wellcome Trust for the Malawi-Liverpool-Wellcome Trust Clinical Research Programme 084679/Z/08/Z (RSH). NIH/NHLBI U01 HL098960 (HLT). In addition, this project was supported by the Indiana Clinical and Translational Sciences Institute funded in part by NIH Grant Number ULL1 TR001108.

## Availability of data and materials

Sequencing data from this study is deposited at NCBI, and openly available (SRA accession number SRP043676), weblink: <http://www.ncbi.nlm.nih.gov/gquery/?term=SRP043676>  
Fully anonymised participant level data is available at <http://doi.org/10.6070/H4513W8T> (deposited at LabArchives).

## Authors' contributions

JR: Study design, ethics, laboratory work, data analysis, writing the paper. AK: Volunteer recruitment, sample collection, writing the paper. DEN and ET: Laboratory work (DNA isolation), writing the paper. RBD: Laboratory work and analysis, writing the paper. HL, XG and QD: Data analysis, paper drafting and writing. ES and GMW: Laboratory work (microbiome sequencing and QC), writing the paper. RSH: Study design, writing the paper. HLT and SBG: Study design, data analysis, writing the paper. All authors read and approved the final manuscript.

## Competing interests

The authors have no competing interests.

## Consent for publication

Not applicable.

## Ethics approval and consent to participate

All participants provided informed, written consent. Ethical approval for this study of humans was granted by the University of Malawi College of Medicine Research Ethics Committee (proposal P.03/10/916) and Liverpool School of Tropical Medicine Research Ethics Committee in the UK (proposal 09.69).

## Author details

<sup>1</sup>Department of Clinical Sciences, Liverpool School of Tropical Medicine, Liverpool L3 5QA, UK. <sup>2</sup>Department of Medicine, Indiana University, Indianapolis, IN, USA. <sup>3</sup>Malawi-Liverpool-Wellcome Trust Clinical Research Programme, Blantyre, Malawi. <sup>4</sup>Department of Microbiology and Immunology, Indiana University School of Medicine, Indianapolis, IN, USA. <sup>5</sup>Center for Biomedical Informatics, Department of Public Health Sciences, Loyola University Chicago, Maywood, IL 60153, USA. <sup>6</sup>The Jackson Laboratory for Genomic Medicine, Farmington, Connecticut 06032, USA.

Received: 1 March 2016 Accepted: 4 August 2016

Published online: 11 August 2016

## References

- Ezzati M, Kammen DM. The health impacts of exposure to indoor air pollution from solid fuels in developing countries: knowledge, gaps, and data needs. *Environ Health Perspect*. 2002;110(11):1057–68.
- Torres-Duque C, Maldonado D, Perez-Padilla R, Ezzati M, Viegi G. Biomass fuels and respiratory diseases: a review of the evidence. *Proc Am Thorac Soc*. 2008;5(5):577–90.
- Scott JA, Hall AJ, Muyodi C, Lowe B, Ross M, Chohan B, Mandaliya K, Getambu E, Gleeson F, Drobniewski F, et al. Aetiology, outcome, and risk factors for mortality among adults with acute pneumonia in Kenya. *Lancet*. 2000;355(9211):1225–30.
- Pandey MR, Boleij JS, Smith KR, Wafula EM. Indoor air pollution in developing countries and acute respiratory infection in children. *Lancet*. 1989;1(8635):427–9.
- Mortimer K, Gordon SB, Jindal SK, Accinelli RA, Balmes J, Martin 2nd WJ. Household air pollution is a major avoidable risk factor for cardiorespiratory disease. *Chest*. 2012;142(5):1308–15.
- Lim S, et al. A comparative risk assessment of burden of disease and injury attributable to 67 risk factors and risk factor clusters in 21 regions, 1990–2010: a systematic analysis for the Global Burden of Disease Study 2010. *Lancet*. 2012;380:2224.
- Segal LN, Alekseyenko AV, Clemente JC, Kulkarni R, Wu B, Chen H, Berger KI, Goldring RM, Rom WN, Blaser MJ, et al. Enrichment of lung microbiome with supraglottic taxa is associated with increased pulmonary inflammation. *Microbiome*. 2013;1(1):19.
- Twigg 3rd HL, Morris A, Ghedin E, Curtis JL, Huffnagle GB, Crothers K, Campbell TB, Flores SC, Fontenot AP, Beck JM, et al. Use of bronchoalveolar lavage to assess the respiratory microbiome: signal in the noise. *Lancet Respir Med*. 2013;1(5):354–6.
- Morris A, Beck JM, Schloss PD, Campbell TB, Crothers K, Curtis JL, Flores SC, Fontenot AP, Ghedin E, Huang L, et al. Comparison of the respiratory microbiome in healthy nonsmokers and smokers. *Am J Respir Crit Care Med*. 2013;187(10):1067–75.
- Salinas MB, Fardeau ML, Cayol JL, Casalot L, Patel BK, Thomas P, Garcia JL, Ollivier B. *Petrobacter succinatimandens* gen. nov., sp. nov., a moderately

- thermophilic, nitrate-reducing bacterium isolated from an Australian oil well. *Int J Syst Evol Microbiol.* 2004;54(Pt 3):645–9.
11. Zhou F, Mbadanga SM, Liu JF, Gu JD, Mu BZ. Evaluation of microbial community composition in thermophilic methane-producing incubation of production water from a high-temperature oil reservoir. *Environ Technol.* 2013;34(17-20):2681–9.
  12. Gordon SB, Malamba R, Mthunthama N, Jarman ER, Jambo K, Jere K, Zijlstra EE, Molyneux ME, Dennis J, French N. Inhaled delivery of 23-valent pneumococcal polysaccharide vaccine does not result in enhanced pulmonary mucosal immunoglobulin responses. *Vaccine.* 2008;26(42):5400–6.
  13. Rylance J, Fullerton DG, Scriven J, Aljurayyan AN, Mzinza D, Barrett S, Wright AK, Wootton DG, Glennie SJ, Baple K, et al. Household air pollution causes dose-dependent inflammation and altered phagocytosis in human macrophages. *Am J Respir Cell Mol Biol.* 2015;52(5):584–93.
  14. Schloss PD, Westcott SL, Ryabin T, Hall JR, Hartmann M, Hollister EB, Lesniewski RA, Oakley BB, Parks DH, Robinson CJ. Introducing mothur: open-source, platform-independent, community-supported software for describing and comparing microbial communities. *Appl Environ Microbiol.* 2009;75(23):7537–41.
  15. Wang Q, Garrity GM, Tiedje JM, Cole JR. Naive Bayesian classifier for rapid assignment of rRNA sequences into the new bacterial taxonomy. *Appl Environ Microbiol.* 2007;73(16):5261–7.
  16. Benjamini Y, Hochberg Y. Controlling the False Discovery Rate: a practical and powerful approach to multiple testing. *J R Stat Soc B (Methodological).* 1995;57(1):289–300.
  17. Faith DP. Phylogenetic pattern and the quantification of organismal biodiversity. *Philos Trans R Soc Lond B Biol Sci.* 1994;345(1311):45–58.
  18. Lozupone C, Knight R. UniFrac: a new phylogenetic method for comparing microbial communities. *Appl Environ Microbiol.* 2005;71(12):8228–35.
  19. Goslee SC, Urban DL. The ecodist package for dissimilarity-based analysis of ecological data. *J Stat Softw.* 2007;22(7):1–19.
  20. Oksanen J, Blanchet FG, Kindt R, Legendre P, Minchin PR, O'Hara RB, Simpson GL, Solymos P, Stevens MHH, Wagner H. *Vegan: community ecology package.* R package version 2.3-0. 2015.
  21. Anderson MJ, Walsh DCI. PERMANOVA, ANOSIM, and the Mantel test in the face of heterogeneous dispersions: What null hypothesis are you testing? *Ecol Monogr.* 2013;83(4):557–74.
  22. Anderson MJ. Distance-based tests for homogeneity of multivariate dispersions. *Biometrics.* 2006;62(1):245–53.
  23. Kulkarni N, Piersie N, Rushton L, Grigg J. Carbon in airway macrophages and lung function in children. *N Engl J Med.* 2006;355(1):21–30.
  24. Erb-Downward JR, Thompson DL, Han MK, Freeman CM, McCloskey L, Schmidt LA, Young VB, Toews GB, Curtis JL, Sundaram B, et al. Analysis of the lung microbiome in the “healthy” smoker and in COPD. *PLoS One.* 2011;6(2):e16384.
  25. Charlson ES, Bittinger K, Chen J, Diamond JM, Li H, Collman RG, Bushman FD. Assessing bacterial populations in the lung by replicate analysis of samples from the upper and lower respiratory tracts. *PLoS One.* 2012;7(9):e42786.
  26. Segal LN, Blaser MJ. A brave new world: the lung microbiota in an era of change. *Ann Am Thorac Soc.* 2014;11 Suppl 1:S21–27.
  27. Twigg Iii HL, Knox KS, Zhou J, Crothers KA, Nelson DE, Toh E, Day RB, Lin H, Gao X, Dong Q et al: Effect of Advanced HIV Infection on the Respiratory Microbiome. *Am J Respir Crit Care Med.* 2016;194(2):226–35.
  28. Pragman AA, Kim HB, Reilly CS, Wendt C, Isaacson RE. The lung microbiome in moderate and severe chronic obstructive pulmonary disease. *PLoS One.* 2012;7(10):e47305.
  29. Neupane B, Jerrett M, Burnett RT, Marrie T, Arain A, Loeb M. Long-term exposure to ambient air pollution and risk of hospitalization with community-acquired pneumonia in older adults. *Am J Respir Crit Care Med.* 2010;181(1):47–53.
  30. Dherani M, Pope D, Mascarenhas M, Smith KR, Weber M, Bruce N. Indoor air pollution from unprocessed solid fuel use and pneumonia risk in children aged under five years: a systematic review and meta-analysis. *Bull World Health Organ.* 2008;86(5):390–398C.
  31. Greenberg D, Givon-Lavi N, Broides A, Blancovich I, Peled N, Dagan R. The contribution of smoking and exposure to tobacco smoke to Streptococcus pneumoniae and Haemophilus influenzae carriage in children and their mothers. *Clin Infect Dis.* 2006;42(7):897–903.
  32. Mushtaq N, Ezzati M, Hall L, Dickson I, Kirwan M, Png KM, Mudway IS, Grigg J. Adhesion of Streptococcus pneumoniae to human airway epithelial cells exposed to urban particulate matter. *J Allergy Clin Immunol.* 2011;127(5):1236–42. e1232.
  33. Glennie SJ, Banda D, Mulwafu W, Nkhata R, Williams NA, Heyderman RS. Regulation of naturally acquired mucosal immunity to Streptococcus pneumoniae in healthy Malawian adults and children. *PLoS One.* 2012;7(12):e51425.
  34. Cardenas PA, Cooper PJ, Cox MJ, Chico M, Arias C, Moffatt MF, Cookson WO. Upper airways microbiota in antibiotic-naive wheezing and healthy infants from the tropics of rural Ecuador. *PLoS One.* 2012;7(10):e46803.
  35. Rosenstein NE, Perkins BA, Stephens DS, Popovic T, Hughes JM. Meningococcal disease. *N Engl J Med.* 2001;344(18):1378–88.
  36. Simmons G, Martin D, Stewart J, Jones N, Calder L, Bremner D. Carriage of Neisseria meningitidis among household contacts of patients with meningococcal disease in New Zealand. *Eur J Clin Microbiol Infect Dis.* 2001;20(4):237–42.
  37. El Ahmer OR, Essery SD, Saadi AT, Raza MW, Ogilvie MM, Weir DM, Blackwell CC. The effect of cigarette smoke on adherence of respiratory pathogens to buccal epithelial cells. *FEMS Immunol Med Microbiol.* 1999;23(1):27–36.
  38. Lozupone C, Cota-Gomez A, Palmer BE, Linderman DJ, Charlson ES, Sodergren E, Mitreva M, Abubucker S, Martin J, Yao G, et al. Widespread colonization of the lung by Tropheryma whipplei in HIV infection. *Am J Respir Crit Care Med.* 2013;187(10):1110–7.
  39. Adar SD, Huffnagle GB, Curtis JL. The respiratory microbiome: an underappreciated player in the human response to inhaled pollutants? *Ann Epidemiol.* 2016;26(5):355–9.

Submit your next manuscript to BioMed Central and we will help you at every step:

- We accept pre-submission inquiries
- Our selector tool helps you to find the most relevant journal
- We provide round the clock customer support
- Convenient online submission
- Thorough peer review
- Inclusion in PubMed and all major indexing services
- Maximum visibility for your research

Submit your manuscript at  
[www.biomedcentral.com/submit](http://www.biomedcentral.com/submit)

