

Filière Technologies du vivant

Orientation Chimie analytique

Diplôme 2012

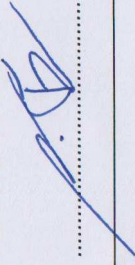

Bastien Ruffieux

*Analyse
de la structure secondaire de protéines
par FTIR*

Professeur Jean-Manuel Segura

Expert Horst Bierau

Bastien Ruffieux

Analyse de la structure secondaire de protéines par FTIR	
Titre / Titel	
Description et Objectifs / Beschreibung und Ziele	
	<p>Les propriétés fonctionnelles des protéines dépendent de leur repliement. Il est ainsi essentiel de disposer de techniques analytiques robustes pour analyser ce repliement en mesurant la proportion des différents types de structure secondaire à l'intérieur d'une protéine donnée. Deux méthodes sont particulièrement utilisées : le dichroïsme circulaire et la spectroscopie infrarouge à transformée de Fourier (FTIR).</p> <p>Le spectre infrarouge des bandes amides des protéines est influencé par leur structure secondaire qui peut être ainsi déterminée à partir de celui-ci. Ce travail vise à optimiser la méthode FTIR pour l'obtention de la structure secondaire de protéines.</p> <p>Les objectifs principaux sont les suivants :</p> <ul style="list-style-type: none">— mesure de spectres FTIR de protéines modèles dans l'eau deutérée et correction de ces spectres— analyse de la structure secondaire à l'aide de la méthode de la seconde dérivée et à l'aide de la méthode de la déconvolution de Fourier; comparaison de ces deux méthodes— analyse de l'influence de l'échange H/D et optimisation de cet échange— écriture d'un protocole optimisé et validé de mesure et d'analyse.
Délais / Termine	
Attribution du thème / Ausgabe des Auftrags: 30.04.2012	Exposition publique / Ausstellung Diplomarbeiten: 31.08.2012
Fin des travaux de diplôme dans les laboratoires de l'école / Ende der Diplomarbeiten in den Labors der Schule: 13.07.2012	Défense orale / Mündliche Verteidigung: dès la semaine 35 ab Woche 35
Remise du rapport / Abgabe des Schlussberichts: 17.08.2012 12h00	
Signature ou visa / Unterschrift oder Visum	
	
Responsable de la filière / Leiter des Studiengangs:	1 Etudiant/Student:

SI	TV
X	X

<input type="checkbox"/> FSI <input checked="" type="checkbox"/> FTV	Année académique / Studienjahr 2011/2012	No TD / Nr. DA ca/2012/90
Mandant / Auftraggeber <input checked="" type="checkbox"/> HES—SO Valais <input type="checkbox"/> Industrie <input type="checkbox"/> Ecole hôte	Etudiant / Student Bastien Ruffeux	Lieu d'exécution / Ausführungsort <input checked="" type="checkbox"/> HES—SO Valais <input type="checkbox"/> Industrie <input type="checkbox"/> Ecole hôte
Professeur / Dozent Jean-Manuel Segura	Expert / Experte (données complètes)	
Travail confidentiel / vertrauliche Arbeit <input type="checkbox"/> oui / ja ¹ <input checked="" type="checkbox"/> non / nein		

¹ Par sa signature, l'étudiant-e s'engage à respecter strictement la directive et le caractère confidentiel du travail de diplôme qui lui est confié et des informations mises à sa disposition.
Durch seine Unterschrift verpflichtet sich der Student, die Richtlinie einzuhalten sowie die Vertraulichkeit der Diplomarbeit und der dafür zur Verfügung gestellten Informationen zu wahren.

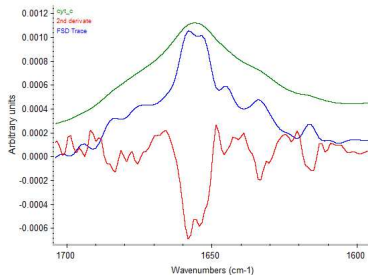
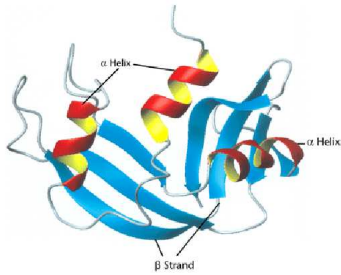


Analysis of protein secondary structure by FTIR



Graduate

Ruffieux Bastien



Bachelor's Thesis
| 2012 |



Degree course
Life Technologies

Field of application
Analytical chemistry

Supervising professor
Prof. Dr Segura Jean-Manuel
jmanuel.segura@hevs.ch

Partner

Objectives

Development, implementation and validation of an analytical method to quantify the secondary structure of proteins in water using Fourier-transform infrared spectroscopy.

Methods | Experiences | Results

The secondary structure of proteins is extracted from the shape of the amide I band ($1600\text{-}1700\text{ cm}^{-1}$). Infrared spectra of proteins in water at 5% w/v concentration were recorded and corrected for water and water-vapour absorption. The latter was minimized by purging using nitrogen. Second-derivative spectra were calculated from the smoothed corrected spectra using a five points Savitsky-Golay algorithm. The various peaks present in the second-derivative spectra were integrated and attributed to the different secondary-structure motives: α -helices, β -sheets and β -turns.

The developed method yielded reproducible results for the ten model proteins tested. The proportions of the different secondary-structure motives were in close agreement with previous reports using FTIR spectroscopy and usually corresponded to experimental values derived from X-ray structures.

Objectifs

Développement, implémentation et validation d'une méthode analytique pour quantifier la structure secondaire des protéines dans l'eau en utilisant la spectroscopie infrarouge à transformée de Fourier.

Méthodes | Expériences | Résultats

La structure secondaire des protéines est extraite de la forme de la bande amide I ($1600\text{-}1700\text{ cm}^{-1}$). Les spectres infrarouge de diverses protéines dans l'eau à 5% m/v ont été obtenus et corrigés pour éliminer l'absorption de l'eau et de la vapeur d'eau. Cette dernière a été minimisée par une purge d'azote. Les spectres de la seconde dérivée ont été calculés depuis le spectre affiné et corrigé en utilisant l'algorithme de Savitsky-Golay à cinq points. Les différents pics présents dans le spectre de la seconde dérivée ont été intégrés et attribués aux différents motifs de structure secondaire : hélices α , feuillets β et boucles β .

La méthode développée donne des résultats reproductibles pour les dix protéines modèles testées. Les proportions des différents motifs de structure secondaire sont concordants avec des publications utilisant la spectroscopie FTIR et correspondent aux valeurs expérimentales dérivées des structures aux rayons X.

Sommaire

1	Introduction	2
1.1	Protein secondary structure	3
1.1.1	Secondary structure motives assignment.....	4
2	Material.....	6
2.1	Proteins.....	6
3	Method.....	7
3.1	Optimisation	7
3.1.1	Purge	8
3.1.2	Number of scan	11
3.1.3	Resolution.....	12
3.1.4	Gain	13
3.1.5	Concentration.....	15
3.2	Data processing	17
3.2.1	Water correction	18
3.2.2	Vapour correction	19
3.2.3	Smoothing	21
3.2.4	S-G 2 nd derivative.....	22
3.2.5	Fourier self-deconvolution	23
3.3	Final method.....	24
4	Results.....	25
5	Discussion.....	29
5.1	Water and vapour subtraction	29
5.2	Vapour subtraction.....	29
5.3	Results.....	30
6	Conclusion.....	31
7	Bibliography	32
8	Annexe	32

1 Introduction

In biochemistry, proteins are very complex molecules due to a highly complicated structure and an even more complicated mechanistic functionality. Proteins are the legacy from billions of years of evolution, fail and success (Alberts B., 2002). A protein is defined by two major aspects, its linear structure — the primary one — composed in a chain of amino acids, and its three dimensional structure — and its secondary, tertiary and quaternary structure.

The Primary structure is made of a long chain of amino acids. There are 20 types of amino acids, each with different chemical properties which bond it to its neighbour by a covalent peptide bond. Each protein has a specific sequence of amino acids.

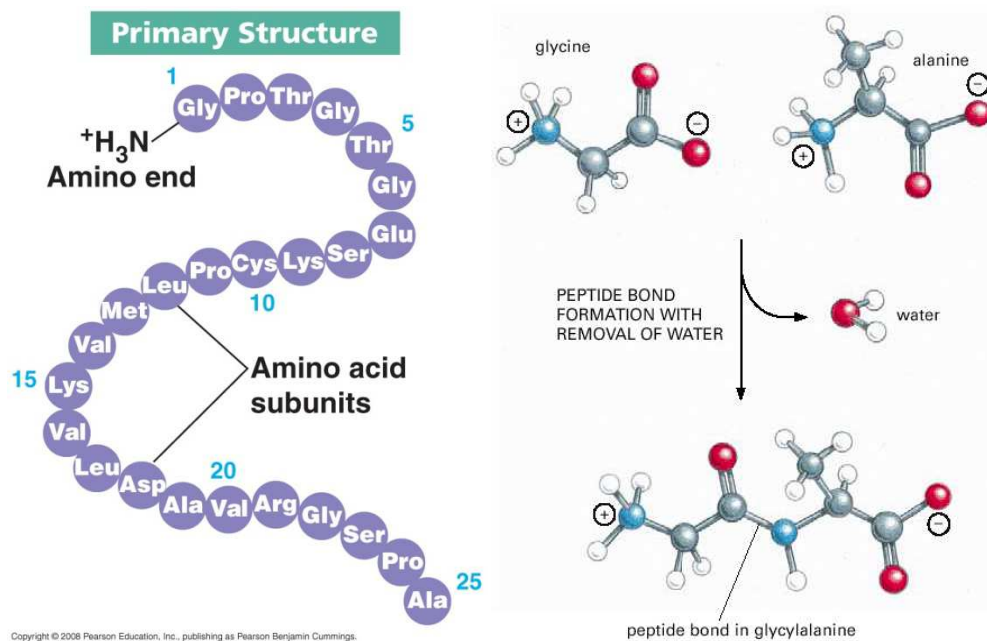


Figure 1: Protein primary structure and peptide bond

If the primary structure is essential to the proper working of a protein, the secondary structure is as important but harder to define and analyse.

1.1 Protein secondary structure

Protein secondary structure is the general three-dimensional form of local segments of proteins. It doesn't describe the atomic position in three-dimensional space which is the tertiary structure.

Secondary structure motives are defined by the hydrogen bond stabilising its structure between carbonyl and nitrogen of amino acids. H-bond generates specific dihedral angles that determine the orientation and secondary structure motives. Secondary structure can then be determined as the repetition of H-bonds. In vibrational spectroscopy such as infrared ones, in general, H-bonds influence the amide I band, which is specific to the C=O bond vibration. (Barth, 2007)

A method to define the protein secondary structure motives is the DSSP one (Kabsch W., 1983). This method defines the secondary structure motives by the electronical density of the hydrogen bond. A hydrogen bond is identified if E in the following equation is less than -0.5kcal/mol.

$$E = q_1 * q_2 * \left(\frac{1}{r_{ON}} + \frac{1}{r_{CH}} - \frac{1}{r_{OH}} - \frac{1}{r_{CN}} \right) * f$$

With $q_1=0.42e$, $q_2=0.20e$ and $f=332$. In chemical units, r is in angstroms.

1.1.1 Secondary structure motives assignment

A hydrogen bond on the C=O creates a modification of the vibration. Concretely it generates a shift of the carbonyl peak. Usually, an H bond makes a negative shift. There are three different motives, α -helix, β -sheet and β -turn.

The α -helix is a group of motives containing 3_{10} helix, α -helix and π -helix. These three motives have the same global appearance; the only difference is the number of amino acids between the H-bond. The helix is a spiral where each amino acid makes an H-bond. If an amino acid i makes a bond with the amino acid $i+3$, then a 3_{10} helix is formed, i to $i+4$, α -helix and i to $i+5$, π -helix. Figure 2 shows an example of alpha helix.

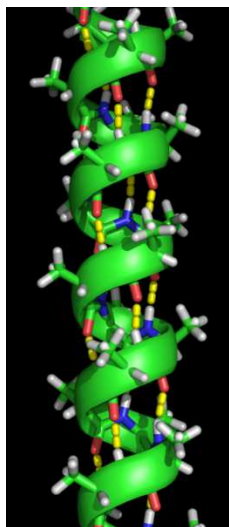


Figure 2: alpha helix motive of protein. Yellow: H-bond

The β -sheet is a strand connected laterally by H-bond. It can either be parallel or antiparallel, depending of the alignment of the two protein parts participating on the β -sheet.

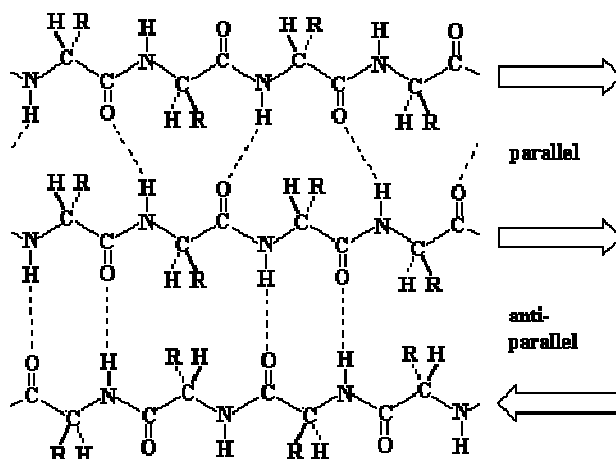


Figure 3: antiparallel and parallel beta-sheet

β -turn are a single H-bond between two amino acid separated by a few, 1 to 5 peptide bonds. In fact, they are single α -helix or β -sheet. Figure 4 shows a beta turn i to $i+3$.

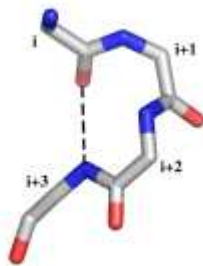


Figure 4: beta turn i to $i+3$

All these secondary structure motives induced a shift of the amide I band due to the hydrogen bond. The shifts are specific to each structure and a table can be made to assign each peak in the amide I band to a motive. Table 1 shows these specific assignments.

Table 1: assignment of peak frequency to secondary structure motives

frequency	assignment
1624	β -sheet
1627	β -sheet
1633	β -sheet
1638	β -sheet
1642	β -sheet
1648	Random coil
1656	α -helix
1663	3_{10} -helix
1667	β -turn
1675	β -turn
1680	β -turn
1685	β -turn
1691	β -sheet
1696	β -sheet

Being able to analyse and quantify the secondary structure is very important. To do its job, a protein must be correctly folded. In most biochemical domain, proteins are the most used type of molecule. There are denaturated, renaturated and must work well after the process. When synthesizing a protein, the folding is a major part of the process.

To be sure that a protein is functional, a method must be created to certify the folding of the protein.

2 Material

- Nicolet 5700 FTIR, Thermo
- OMNIC Software version 1.26
- Spacer MYLAR 0.006 mm, Portmann Instruments AG
- Nitrogen 4.5, Pangas
- MATLAB Software version 7.10.0.499 (R2010a)

2.1 Proteins

- Lysozyme, from chicken egg white, SIGMA, L6876
- Concanavalin A, from *Canavalia ensiformis*, SIGMA, L7647
- Ribonuclease A, from bovine pancreas, SIGMA, R5500
- Pepsin, from porcine gastric mucosa, SIGMA, P6887
- Hemoglobin, from bovine blood, Fluka, 51290
- Myoglobin, from horse heart, SIGMA, M1882
- Cytochrome C, from equine heart, SIGMA, C7752
- Trypsin, from bovine pancreas, SIGMA, T8003
- Alpha-chymotrypsin, from bovine pancreas, SIGMA, C7762

3 Method

3.1 Optimisation

Based on the work of Dong (Dong A., 1990) and Kong (Kong J., 2007), initial parameters were known and optimized to reduce the analysis time. A nitrogen purge is also applied to reduce absorption of water and water vapour in the amide I band ($1600-1700\text{ cm}^{-1}$) and make the subtraction of residual vapour easier. (Pelton J. T., 2000)

Optimized parameters of the Fourier transform infrared spectroscopy are the number of scans, the resolution and the gain through the setting of the aperture. Some analysis parameters are optimized as well, nitrogen purge, protein concentration and all the data processing.

The highest difficulty of this analysis is the wide absorption band of water appearing between 1600 and 1700 cm^{-1} . Most of the optimizations are made to reduce the effect of water and vapour on the amide I band.

Another way to eliminate water absorption is to use D_2O instead of water for the analysis. This method has the advantage of suppressing water absorption at 1650 cm^{-1} and allowing in the same case the use of cells with much longer path length. A much longer path length also allows a smaller concentration of protein, which is better for hydrophobic protein. But some other things must be considered. First of all, protein structure can slightly change in D_2O due to the difference of weight between deuterium and hydrogen that will change the properties of hydrogen bond. To avoid a protein with both hydrogen and deuterium in it, a study on deuterium-hydrogen transfer must be done. So analysing protein in D_2O has some good advantage but also some disadvantage.

With all considerations it has been decided to get focus on water analysis.

3.1.1 Purge

Purging ambient air by nitrogen allows an easier subtraction of the water vapour spectrum. The vapour appears as a high number of peaks between 1350 and 2000, absorbing right in the area of the amide I band. Two parameters can be improved for the purge. The duration of the purge and the output pressure that corresponds to the flow of nitrogen. The duration can easily be determined as the time when no changes are observed to the absorbance of the specific peaks of vapour with more time of purging. Figure 5 shows the evolution of the purge in time. The spectrums are in absorbance versus a 10 minute purge.

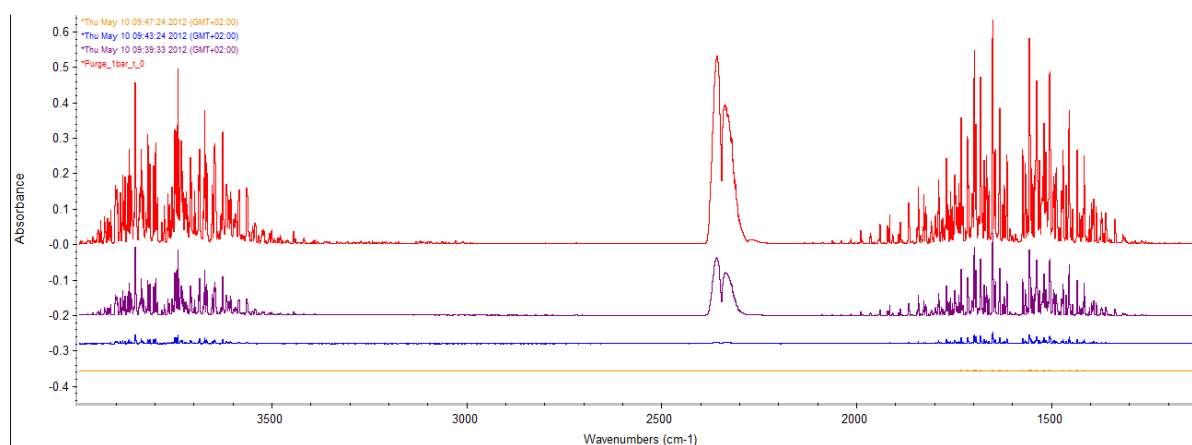


Figure 5: relative absorbance of vapour at different time of purging versus a 10 minute purge. Red: 0 minute purge. Purple: 1 minute purge. Blue: 5 minute purge. Yellow: 9 minute purge.

After 10 minutes, no significant changes are visible. That set the optimal purge time to 10 minutes.

The second parameter is less evident to determine and both efficiency of the purge and high needed flow of nitrogen must be considered. The Figure 6 shows that by using a simple nitrogen purge, it is easy to considerably reduce the impact of the vapour, as disturbing impurities, in the area of analysis.

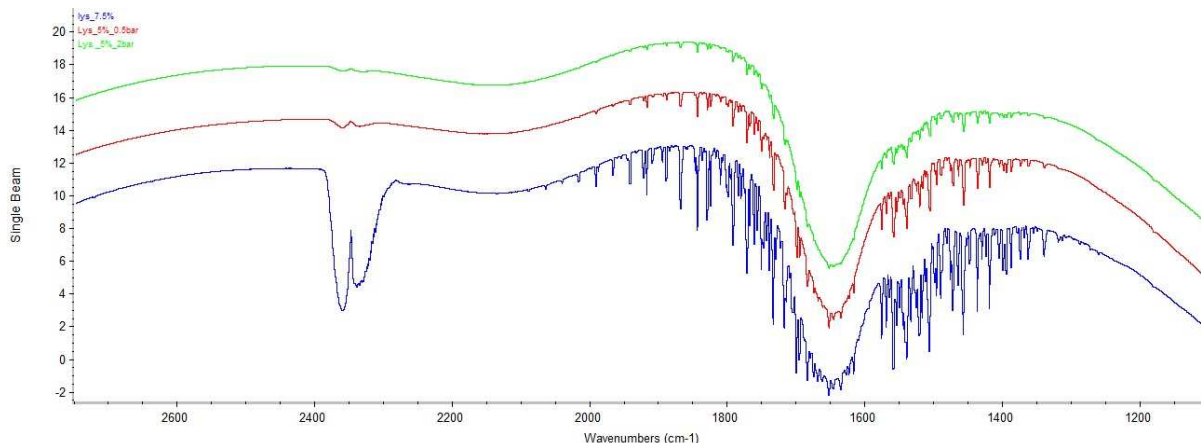


Figure 6: Spectrum of lysozyme with three different purges. Light green: 10 min of output pressure of 2 bar nitrogen. Red: 10 min of output pressure of 0.5 bar nitrogen. Dark blue: no nitrogen purge

An important effect can be shown even with a small purge. At 0.5 bars, the peaks are already highly reduced but 2 bar shows a significant improvement that can be observed only after the subtraction of the water and the vapour. Figure 7 shows the spectrum of lysozyme after the subtraction.

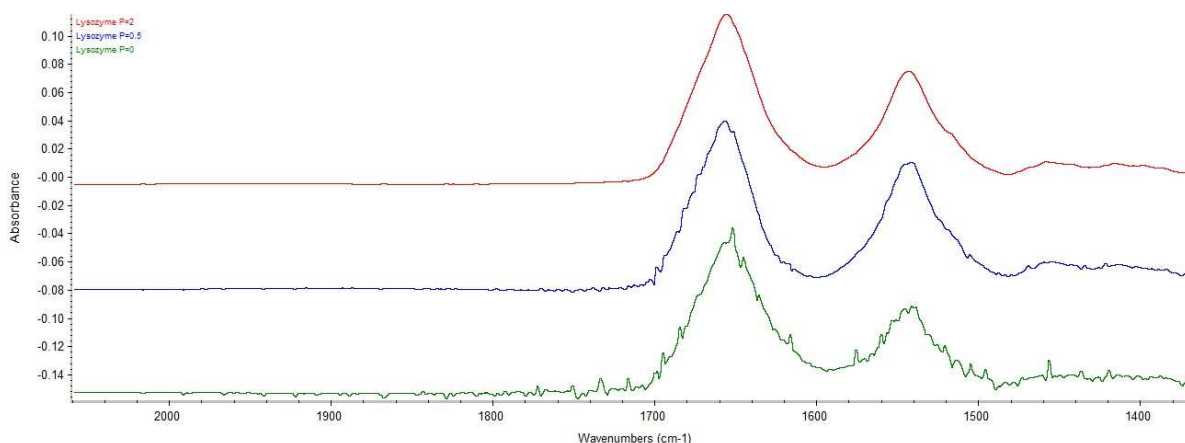


Figure 7: Spectrum of lysozyme with three different purges after subtraction of water and vapour. Red: 2 bar purge. Blue: 0.5 bar purge. Green: without purge

The spectrum is now clean for the spectrum with the 2 bar purge. But we can see that the two other spectrums had a lot of peaks remaining from the vapour. It's not possible to clean them more due to the presence of positives and negatives peaks. Subtracting the vapour more or less will only make some other peaks appear while some peaks will disappear. The area between 1700 and 1900 cm^{-1} in the green spectrum clearly demonstrate this problem with a lot of peaks specific to the vapour. This can be observed on Figure 8 by superposing the spectrum to the vapour spectrum.

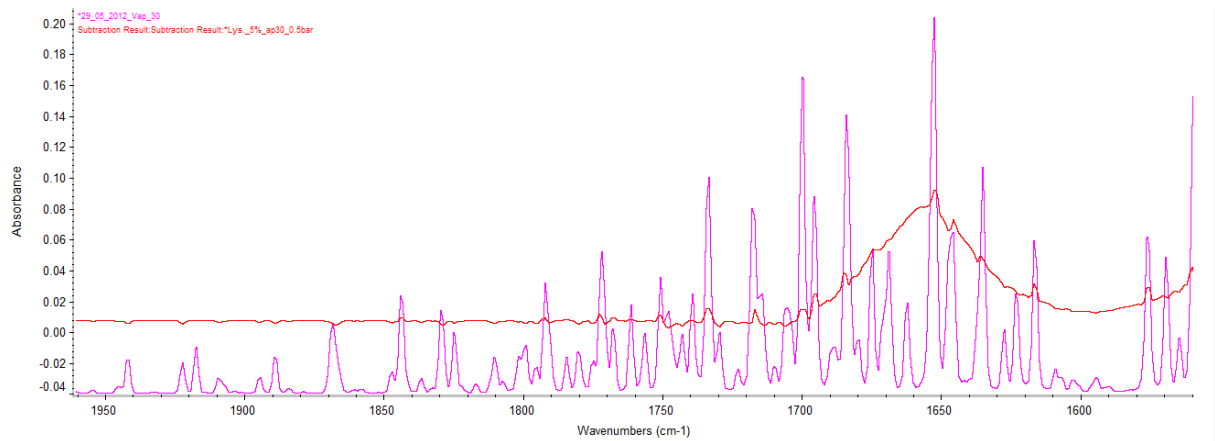


Figure 8: Clean spectrum of lysozyme without purge and spectrum of vapour. Red: lysozyme spectrum. Violet: Vapour spectrum

All these observations made the parameters of an optimal purge set to 10 minutes and 2 bar of output pressure. Having a better purge will only give really small changes with a higher analysis price. Even with a 2 bar purge, with 10 minutes purge and 4 minutes analysis, that cost about 20 bar of a 50l canister of 200 bar nitrogen at 60 CHF (2012/08/01), about 6 CHF of nitrogen per analysis. But we must also consider that we can't make more than 10 analysis per canister and it's better not to stack a lot of high pressure nitrogen.

3.1.2 Number of scan

Two different number of scan are tried, 100 scans and 1000 scans. It seems that 1000 scans is the most used, but due to the high necessary volume of nitrogen, it would be better to use a smaller number of scan. After trying both, a smaller number of scans appears to demonstrate better results. This is shown on Figure 9.

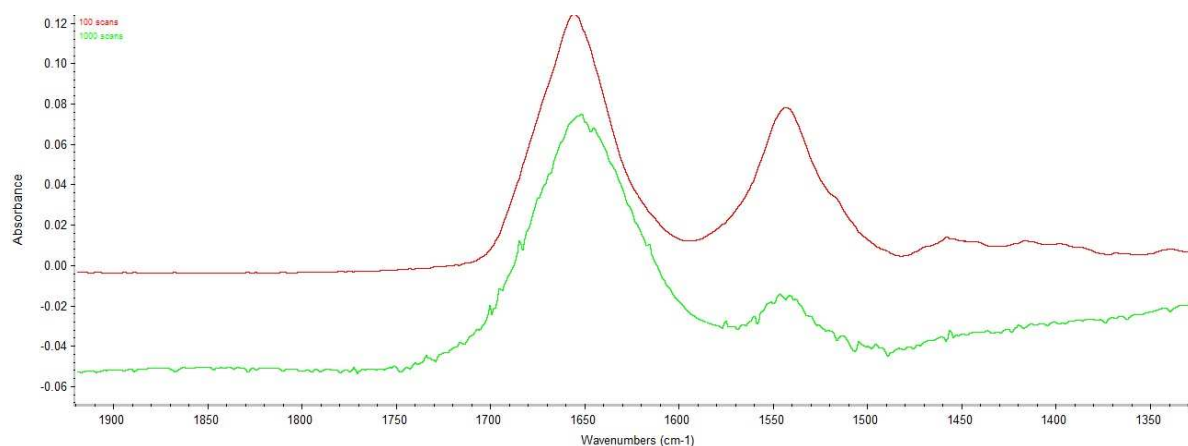


Figure 9: Comparison between a 100 scans and 1000 scans analysis. Red: Lysozyme with 100 scans. Light green: Lysozyme with 1000 scans

Most people used a higher number of scans (Dong A., 1990) (Kong J., 2007) but we saw that with our device and our parameters, it gives better result with a smaller number of scans. The reason is hard to explain because in normal cases, a higher number of scans must reduce the background noise. We can only make the supposition that the noise we detect with a higher number of scans comes from impurities in water or in protein and appear when stacking a high number of analysis. But something like this is hard to tell due to the two subtractions made before. These noises can occur in both the subtraction of water and subtraction of vapour.

As the experimental analysis shows, a number of scans of 100 is preferable to a higher number but the reason is only that we observed it. To pull the experiment in extreme way, a number of scan of 8 has been tried to be sure that it's necessary to have a high number of scan and the result is as expected that with a really small number of scan, the background can't be subtracted. The experiment has also been made on pepsin and cytochrome C with the same results.

3.1.3 Resolution

By changing the resolution, the number of data in the spectrum become higher or smaller. With a resolution of 2, the spectrum has about one point by cm^{-1} and with a resolution of 1, two points by cm^{-1} . Figure 10 shows the difference between 2 cm^{-1} resolution and a 1 cm^{-1} resolution after the smoothing.

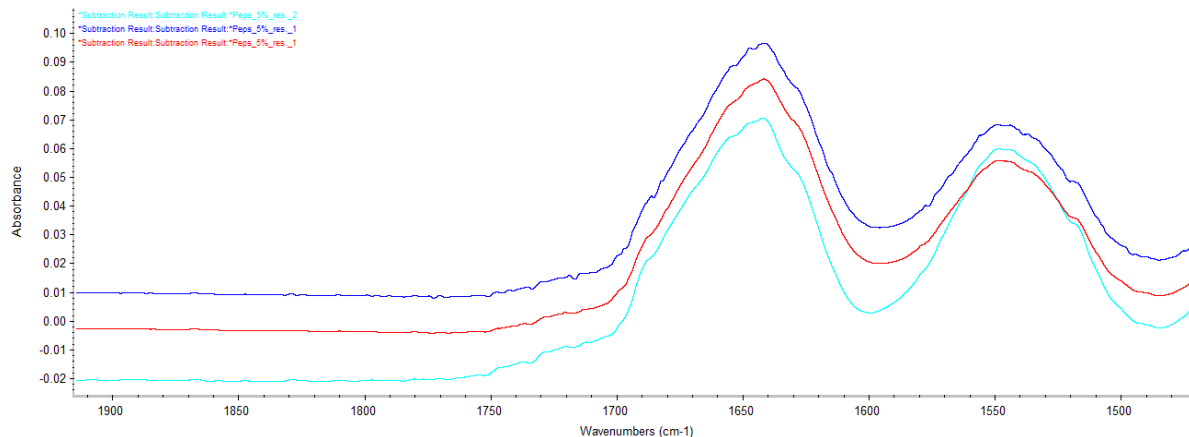


Figure 10: Comparison between a resolution on the FTIR of 1 and 2. Cyan: resolution of 2, 9 points smoothing. Red: resolution of 1, 17 points smoothing. Blue: resolution of 1, 9 points smoothing

The first thing to see is that with a higher number of points, keeping the same smoothing factor (c.f 3.2.3 smoothing) makes no sense. Even if with a 9 points smoothing with a resolution of 1 we've got quite a similar spectrum, we need to apply a smooth with two times more points — seventeen in that case — to get a really similar spectrum. The same reasoning is made for the 2nd derivative in Figure 11.

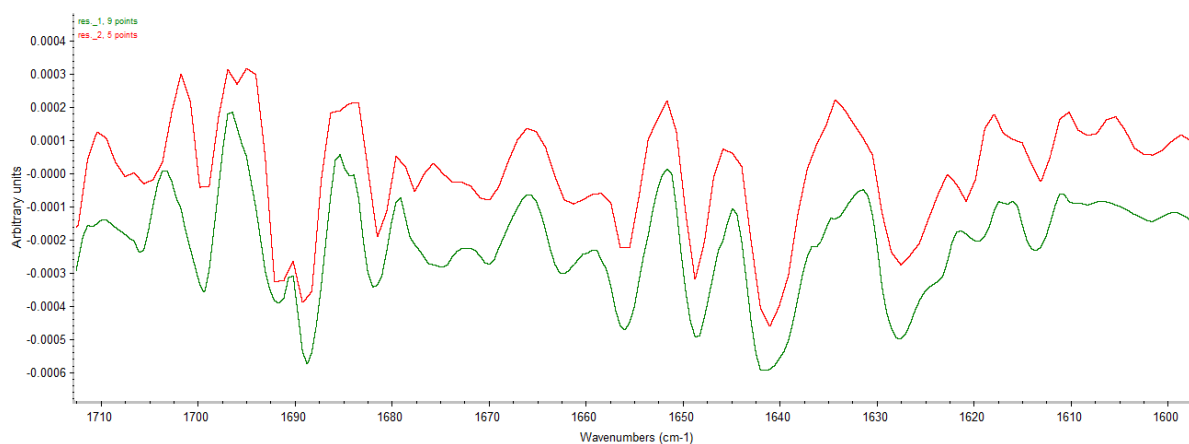


Figure 11: Comparison between 1 and 2 cm^{-1} resolution after 2nd derivative. Red: resolution of 2, 5 points derivative. Green: resolution of 1, 9 points derivative

Both resolutions show clean spectrum for pepsin. Both give same results on secondary structure determination. One advantage of a 2 cm^{-1} resolution is that the base line is easier to see because already flat. But the 1 cm^{-1} resolution gives a cuter spectrum with more curves due to the higher number of data. This has absolutely no analytical value but is not to be neglected for a presentation. In conclusion, a resolution of 2 cm^{-1} is better mostly because it is cheaper due to a smaller analysis time.

3.1.4 Gain

The gain of the infrared device depends directly on the aperture and the sample. For a sample of a 5 % w/V protein, a gain of 1 can be obtained with an aperture of about 30. The gain is calculated by the OMNIC software. Due to some difference between analysis proteins, the gain can't be assured with a single aperture.

To show that the aperture has no significant impact on this analysis, the biggest aperture allowed by the software has been tested. But to keep a simple operative procedure, instead changing the aperture for each protein, an aperture of 30 is used in each case.

Figure 12 shows the spectrums of lysozyme obtained with an aperture of 30, the best theoretical gain, and 69, the maximum gain of the software.

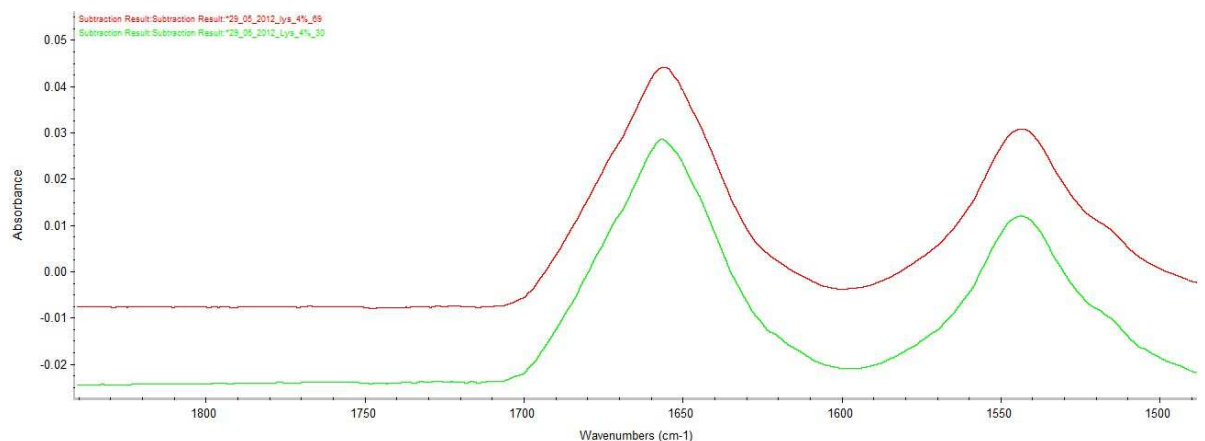


Figure 12: effect of aperture on lysozyme analysis. Red: aperture of 69. Green: aperture of 30

The aperture has no visible impact on the spectrum after modification. But after the Savitzky-Golay 2^{nd} derivative, a difference can be observed. Figure 13 shows these same spectrums after the 2^{nd} derivative.

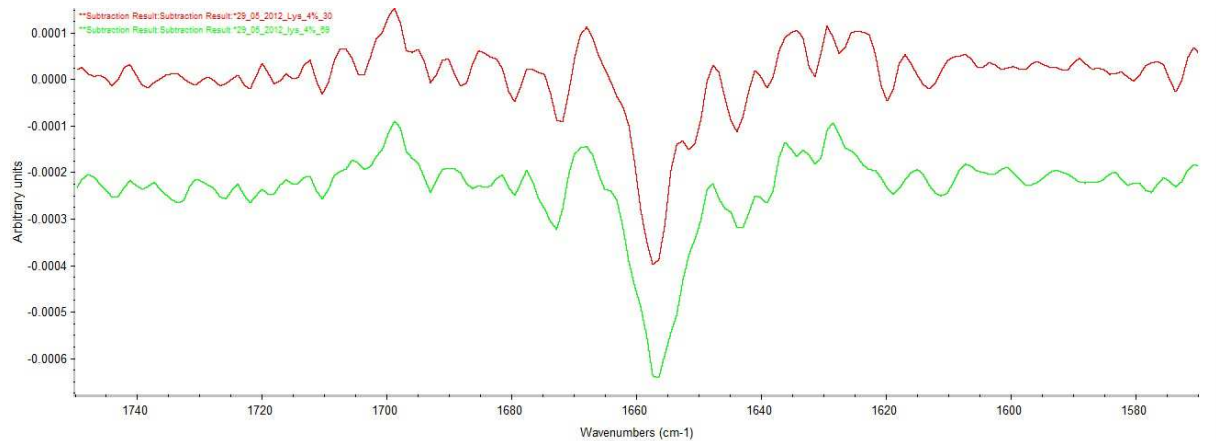


Figure 13: effect of aperture on lysozyme analysis after S-G 2nd derivative. Red: aperture of 30. Green: aperture of 69

After applying the S-G 2nd derivative, some differences appear. If the two spectrums show no significant differences relatively to the desired precision of the analysis, peaks are better defined with a better gain (aperture of 30, red spectrum) than with a bigger aperture (aperture of 69, green spectrum).

With a high difference of aperture, the differences on the final spectrums are smaller. After this conclusion, it appears that keeping an aperture of 30 for all proteins without any distinction won't change the final analysis.

3.1.5 Concentration

Proteins are high price molecules when bought and when synthesized, therefore it's hard to get a high concentration. To get an easy analysis process, having a single concentration working for most proteins is a bonus. Based on the work of Dong, Huang and Caughey[(Dong A., 1990)], a concentration of 5 % w/V is used. But due to the low dissolution of some protein in water, it could be good to use a low concentration.

Lower concentrations have been tried. Figure 14 shows the spectrum of lysozyme at 7.5, 5, 4, 3 and 1 % w/V after subtracting the water and vapour.

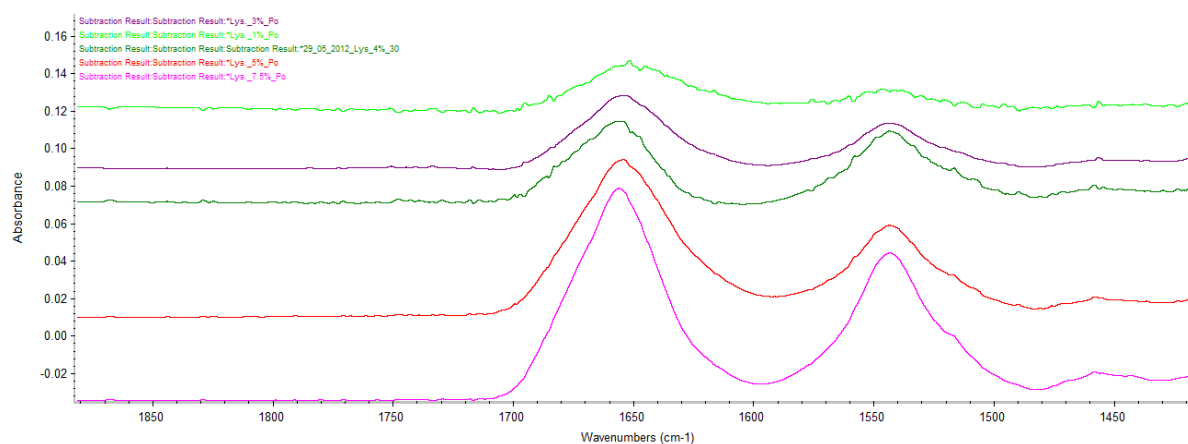


Figure 14: spectrum of lysozyme at different concentration. Light green: lysozyme 1%. Violet: lysozyme 3%. Dark green: lysozyme 4%. Red: lysozyme 5%. Pink: lysozyme 7.5%

The comparison between the spectrums shows that a higher concentration gives a better spectrum. Amide I band is more intense and the noise is highly reduced. But the amide I band is still present even with low concentration so to know the limit concentration the process must be conducted to the end and we must observe the 2nd derivative spectrum.

Figure 15 shows the same different concentration after a 9 points S-G smoothing followed by a 5 points S-G 2nd derivative.

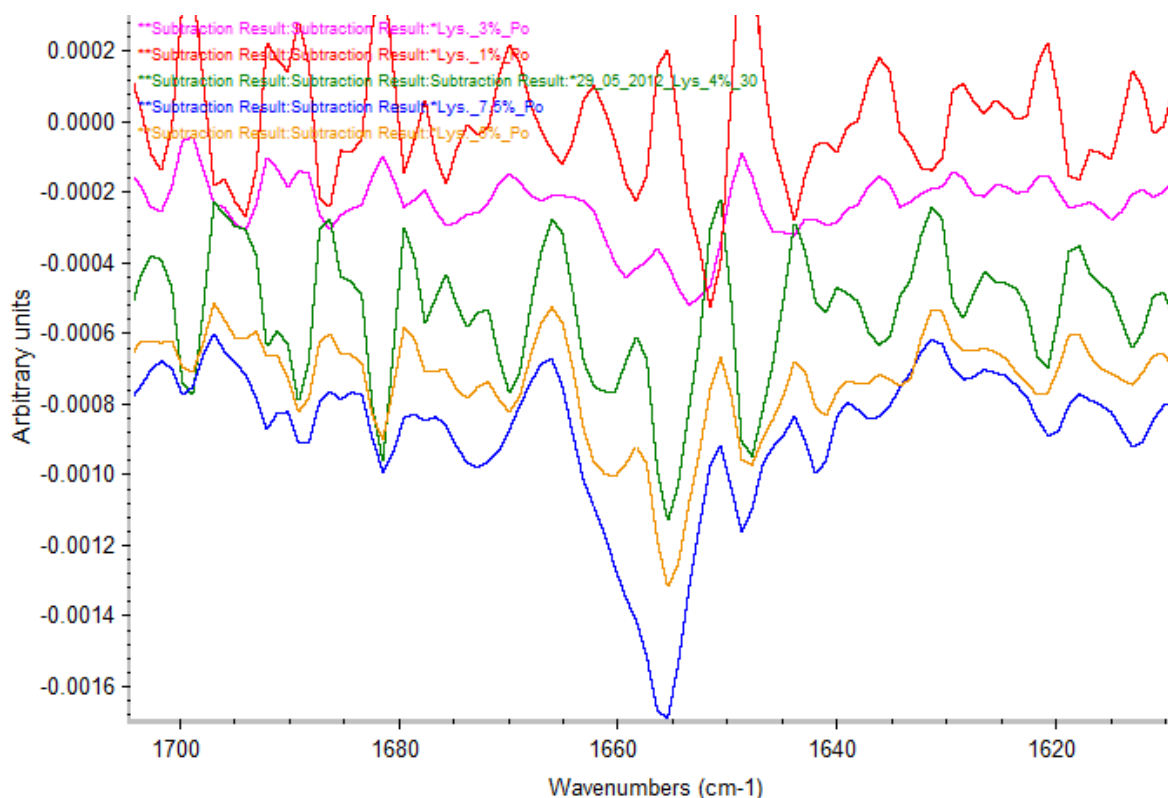


Figure 15: Comparison between different concentrations after 2nd derivative. Red: lysozyme 1%. Pink: lysozyme 3%. Green: lysozyme 4%. Yellow: lysozyme 5%. Blue: lysozyme 7.5%

With small concentration, we can see most of the principal peaks. But it is not possible to get a good base line and most of the peaks are deformed by the background noise. With a high noise it's not possible to guarantee that the peaks are due to the protein instead of the water or water vapour. With 5 and 7.5 %, with a really low noise, the peaks are due to the protein. But with 7.5 %, some peaks are so intense that they are covering other peaks, making hard the attribution of peaks to their structure due to a non-specific wavelength. This effect is well shown on the spectrum of 7.5 % (the blue one) at 1670 cm^{-1} . The two standard peaks for β -sheet in this area are at 1667 and 1675 cm^{-1} . They can't be distinguished one from the other while in spectrum of 5 % (the yellow one), these two peaks are well define.

3.2 Data processing

The treatment of the spectrums is difficult. Principally because of a high subjective part in data processing. To limit this part to the maximum, the better way to process data is to use software which only counts on mathematic parameters to operate. But due to the big difference between all the proteins, it's sometimes not possible to use an automatic process. So both the software method and the manual method will be explained here.

Most of the difficulties of this analysis is the subtraction of water and water vapour because of their absorbance right on the area of the Amide I band. Even with a nitrogen purge, it's not possible to eliminate the peaks due to water and vapour.

There are two predominantly used methods to determine a protein's secondary structure. The first is by using an S-G 2nd derivative, the most often used in this paper, and the second one with a Fourier self-deconvolution. This second one has a huge disadvantage, as a SELF-deconvolution, a few parameters must be set based on the operator feeling. Based on the work of Byler and Susi (Byler D.M., 1986), Standards parameters can be define but in some cases, they must be change. In these cases, only the operator can set the parameters.

So in this work, both methods will be investigated with a focus on the second derivative one.

3.2.1 Water correction

On this analysis, most of absorption comes from water due to its absorption at 1650 cm^{-1} . To get the spectrum of a protein in water, the subtraction of water must be done really precisely. Figure 16 shows the water and the ribonuclease A on the same dimension.

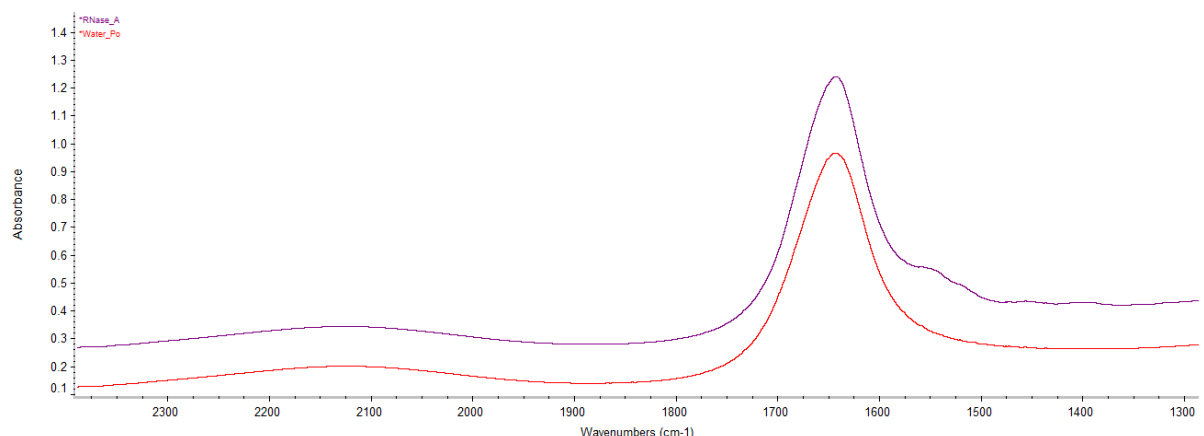


Figure 16: Purple: spectrum of ribonuclease A. Red: spectrum of water

On this figure, the 1650 cm^{-1} band of water absorbs right in the amide I band of the protein. The only visible difference between the two spectrums is the absorption of amide II band at about 1550 cm^{-1} . On this state, it's not possible to work on that spectrum. To subtract the water of the protein spectrum, we must be careful to not subtract the protein itself. To avoid a too high subtraction of water, the water is subtracted with the width specific band of water between 1800 and 2400 cm^{-1} . Figure 17 shows a subtraction of water on cytochrome C. The subtraction of water is controlled between 1750 and 2000 cm^{-1} by a flat base line.

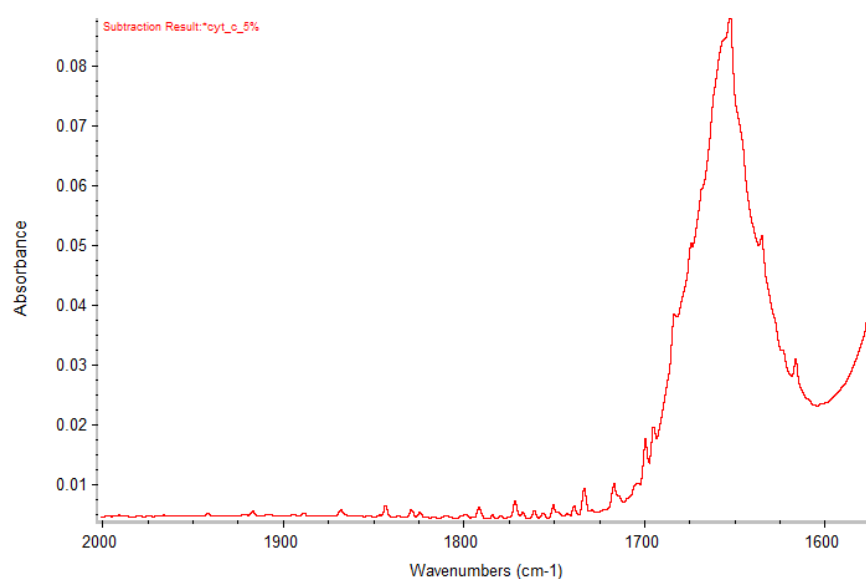


Figure 17: Spectrum of cytochrome C after subtraction of water

3.2.2 Vapour correction

Not only liquid water absorb on the amide I band. Water vapour appears as well notably between 1600 and 1700 cm^{-1} . Figure 18 shows the spectrum of a protein and the spectrum of vapour.

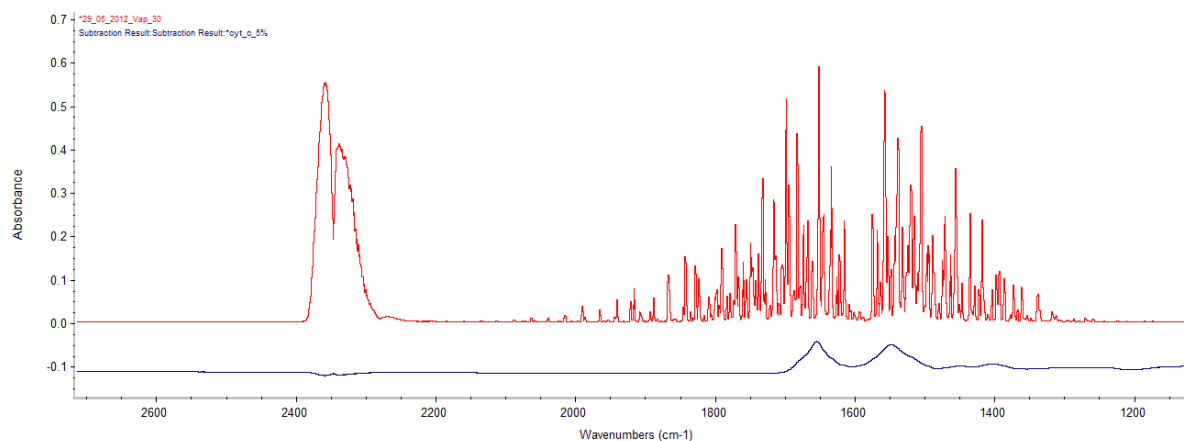


Figure 18: Red: Infrared spectrum of water vapours. Blue: Spectrum of cytochrome C after subtraction of water and vapour. Spectrums are on common scale

Vapour absorb right on the amide I band but also before and after. If it's not possible to use the area at 1300 – 1600 cm^{-1} , the area after 1700 cm^{-1} is free of any protein absorbance. To avoid any wrong subtraction due to the protein absorbance, area between 1750 and 1850 is used to check the subtraction.

Two peaks appear between 2200 and 2400 cm^{-1} . These are peaks from carbon dioxide. Even if these peaks are independent of protein and liquid water, they can't be used. After subtracting vapour on the important area, we can see that carbon dioxide is still appearing at 2350 cm^{-1} .

To obtain a good subtraction, it's necessary to focus on a peak that won't disappear. Four points of a same peak are chosen. Such a peak is present between 1770 and 1775 cm^{-1} . This peak is not possible to eliminate. It is either positive, negative or, when the subtraction is determine as optimal, has both a positive and negative part. Figure 19



Figure 19: Optimal vapour subtraction between 1750 and 1800 cm-1. Arrow: four wavelengths to check.

Both the first and last arrows are part of the base line and won't move. The second arrow and the third arrow must be split around the base line. Even if it appears not to be a straight line, when looking the whole spectrum, the subtraction appears to be well done. Figure 20 shows the protein spectrum between 1300 and 1950 cm⁻¹.

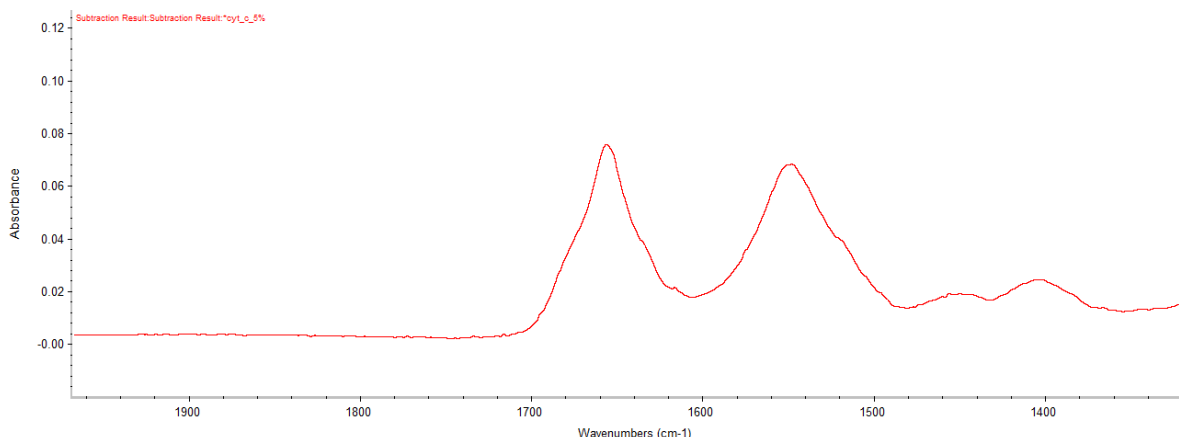


Figure 20: Spectrum of protein after water and vapour subtracting

On this spectrum, the area at 1770 cm⁻¹, which is the one used to subtract vapour, is clearly background noise. By looking at the amide I and amide II area, the spectrum appears as clean even before the S-G smooth.

3.2.3 Smoothing

Smoothing is made by an S-G algorithm. To apply this algorithm, the number of points used by the smoothing must be set with high consequences on the final spectrum. Figure 21 shows the comparison between the same spectrums smoothed five times with different parameters.

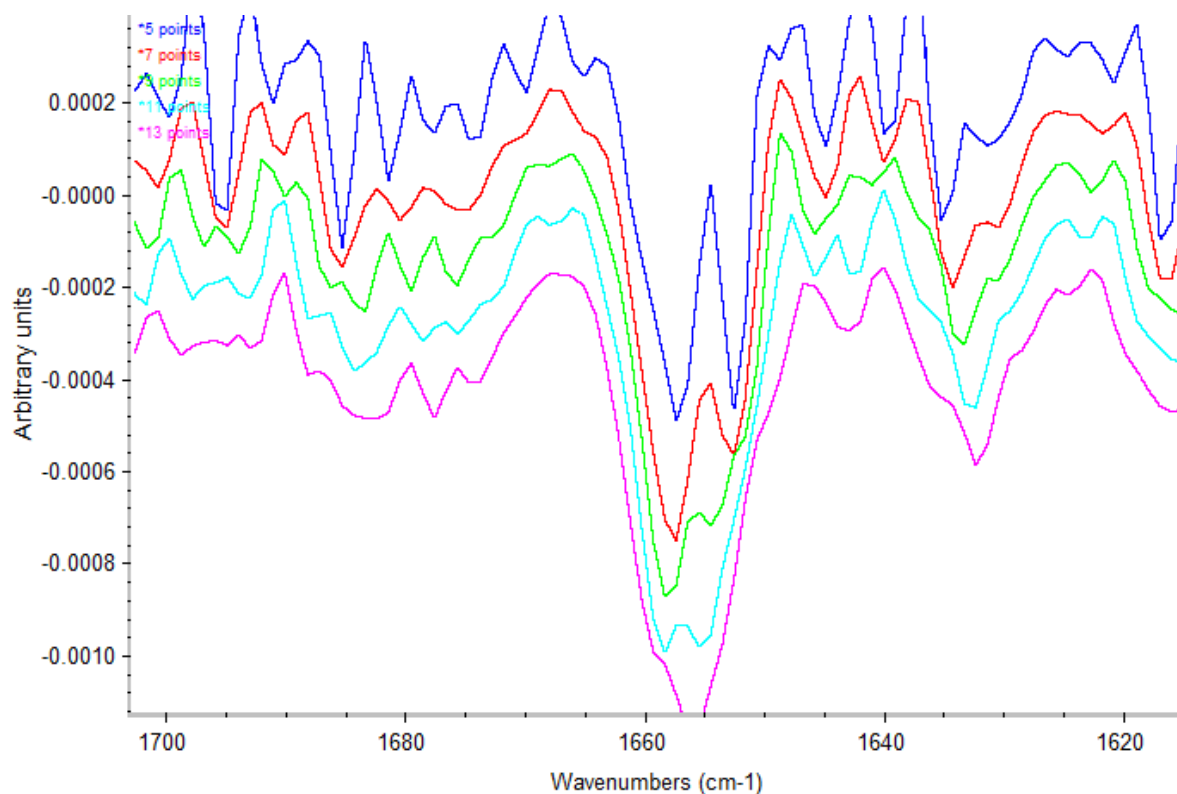


Figure 21: Spectrum of Cytochrome C after 2nd derivative with different smoothing parameters. Blue: 5 points. Red: 7 points. Green: 9 points. Cyan: 11 points. Violet: 13 points

In this case, it's quite easy to eliminate the 5 points smoothing. This one creates a high number of peaks without keeping a regular base line. Most of the attempt peaks are present, but some of them don't appear while we've got some extra peaks. Due to the algorithm, the spectrum can be deformed by the smoothing procedure. So it's really important to use the less invasive parameter to avoid modifying the final result by the mathematical process.

With a 13 points smoothing, some peaks disappeared, which modify the final result. But then, the three other smoothing parameter show similar spectrum. Only the 9 points S-G smooth is kept due to the presence of two distinctive peaks specific to β -sheet at 1691 and 1696 cm^{-1} and a better base line compared to the other smoothing. With a smaller number of points, the base line can't be well defined and with a higher number of points, the peaks are too attenuated to identify the specific wavelength of the secondary structure.

3.2.4 S-G 2nd derivative

To analyse the smooth spectrum and get peaks to emerge, it is necessary to not stay on the base spectrum. Even if it's possible to see some structure appearing as shoulder on the amide I band, it is not possible to determine any structure ratio. A curve fitting on a non-processed protein spectrum was tried without result. To have a usable curve fitting, it is necessary to have a Gaussian curve fitting to attribute every single Gaussian on a single secondary structure type and it is not possible to apply a curve fitting without using too much Gaussian to be pertinent. So a 2nd derivative of the spectrum is obtained by an S-G algorithm. Figure 22 shows a processed spectrum with different S-G 2nd derivative parameter.

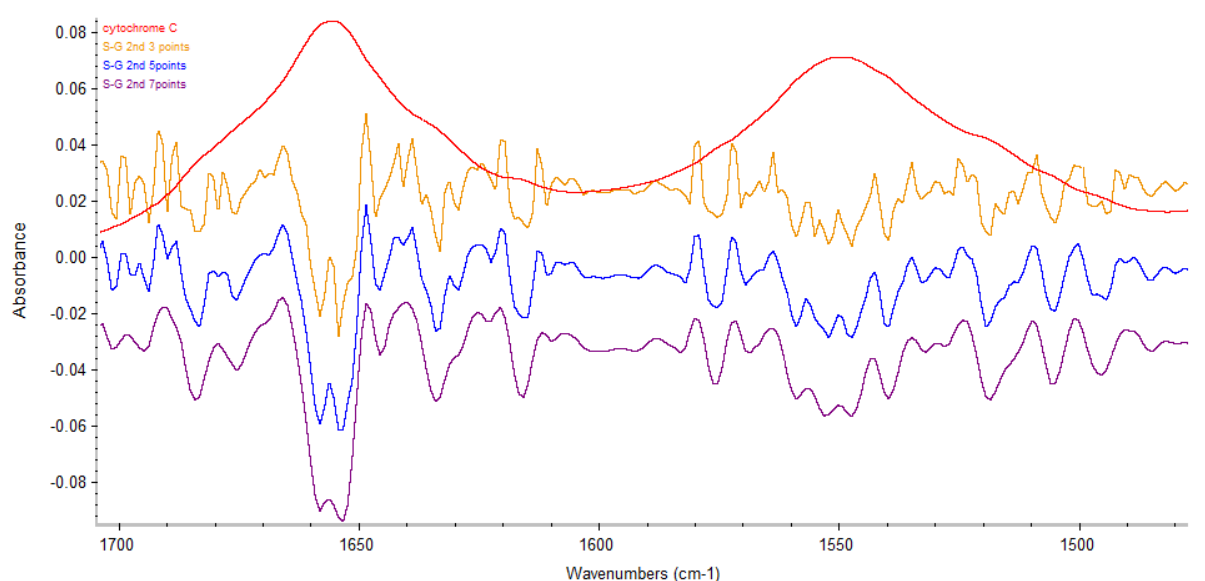


Figure 22: 2nd derivative spectrum of cytochrome C with different S-G 2nd derivative parameter. Red: no derivative. Yellow: 3 points 2nd derivative. Blue: 5 points 2nd derivative. Purple: 7 points 2nd derivative.

Applying 2nd derivative make peaks appear relative to secondary structure motive. Using different parameter doesn't change the global aspect of the spectrum. Each three derivative spectrum have the same peaks and integrate them, result on the same secondary structure ratio.

The difference is on the number of visible peaks. With a seven points derivative, there are eleven peaks on the 1600 – 1700 cm⁻¹ area. Seventeen and twenty two for five point respectively three points derivative. Based on the work of Kong (Kong J., 2007), there are fourteen define peaks for secondary structure in amide I band. The five points have all the fourteen frequencies attribute to peaks of spectrum without too much parasite peaks. The five points derivative is then chosen for the data processing.

3.2.5 Fourier self-deconvolution

The Fourier self deconvolution method is based on the supposition that there are peaks specific to each secondary structure that occur at defined frequencies. The FSD deconvolutes the spectrum and, by the same token, make the peaks appear relative to the secondary structure motive. To avoid aberration, it is necessary to not force some extreme deconvolution's parameters. The two modifiable parameters are the bandwidth and enhancement.

By modifying the bandwidth, the width of each peak will be reduced or increased and by modifying the enhancement, peaks will be more or less defined. Based on the work of Byler and Susi (Byler D.M., 1986), chosen parameters are the standard one, a bandwidth of 13 and an enhancement of 2.4. Others parameter had been tried but by making changes to these parameter, most of the time, aberration —like impossible base line definition due to negative peak— occur on the final spectrum. The final spectrum is curve-fitted with Gaussian and each Gaussians are integrated and attributed to a secondary structure.

Figure 23 shows an example of the deconvoluted and curve fitted spectrum of myoglobin.

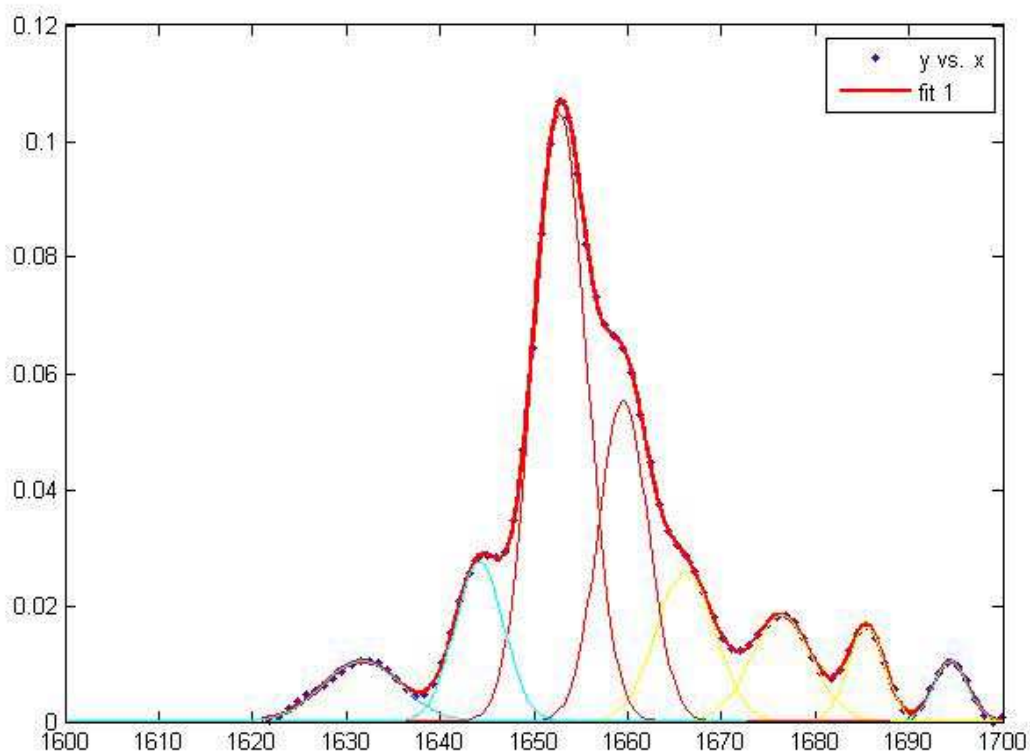


Figure 23: Deconvoluted spectrum of myoglobin with curve fitting. Blue points: deconvoluted spectrum. Red: curve fitting. Cyan: gaussians attributed to beta sheets. Red: gaussians attributed to alpha helix. Yellow: Gaussians attributed to beta turn.

3.3 Final method

The final method had the following FTIR parameters:

- Concentration: 5 % w/V in water
- Pathlength: 6 μm CaF_2 cell
- Number of scans: 100
- Resolution: 2 cm^{-1}
- Aperture: 30
- Range: 4000-400 cm^{-1}

Data processing:

- Subtraction of water: straight line between 1600 and 1700 cm^{-1}
- Subtraction of vapour: minimal peak between 1765 and 1775 cm^{-1}
- Smoothing: nine points Savitsky-Golay algorithm
- Derivative: five points Savitsky-Golay derivative
- Integration: using a MATLAB script

The complete method is described more in detail in annexe 1.

4 Results

Results are obtained for ten different protein using two different methods and compared to reference. The two used methods are the ones describe previously. The Fourier self-deconvolution method was applied using the following parameters. A bandwidth of 13 cm^{-1} and an enhancement of 2.3 based on the work of Byler and Susi (Byler D.M., 1986).

Integration of processed spectrum with smoothing and S-G 2nd derivate was made without considering each band separately. Only the global area of β -sheet band, α -helix band and β -turn band are measured. Figure 24 shows an example of integration area for cytochrome C with 2nd derivative analysis.

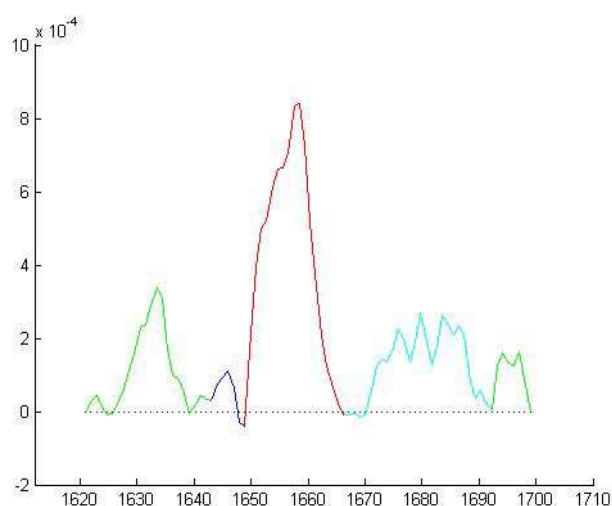


Figure 24: Integration of 2nd derivative inverted spectrum of cytochrome C. Green: beta-sheet. Blue: random coil. Red: alpha-helix. Cyan: beta-turn

Based on the work of Kong (Kong J., 2007), an assignment of secondary structure on the peaks of the spectrum is made. Peaks can experience a small switch of about $\pm 4\text{ cm}^{-1}$ and sometimes more.

On Table 2, all the frequency and assignment for secondary structure are listed for the amide I band, the area between $1600\text{ and }1700\text{ cm}^{-1}$.

Table 2: frequency and assignment of peaks and secondary structure on amide I band.

frequency	assignment
1624	β -sheet
1627	β -sheet
1633	β -sheet
1638	β -sheet
1642	β -sheet
1648	Random coil
1656	α -helix
1663	3_{10} -helix
1667	β -turn
1675	β -turn
1680	β -turn
1685	β -turn
1691	β -sheet
1696	β -sheet

Three peaks are visible on α -helix instead of the two attempt peaks. For β -turn, six peaks appear instead of four. The choice has been made to not integrate every single peak separately but to integrate the area containing the desired structure.

Results for ten proteins are obtained using both the 2nd derivative and Fourier self-deconvolution method and compared to two X-Ray references and one IR Reference. Table 3 lists all of the results and references.

Table 3: Composition of protein secondary structure determined by IR with S-G 2nd derivate and Fourier self-deconvolution

Protein	Secondary Structure				Method
	α -helix	β -Sheet	turn	random	
Lysozyme	40	24	27	9	2 nd derivative
	38	22	28	12	Fsd
	42	6	23	29	X-Ray (a)
	45	19	23	13	X-Ray (b)
	40	19	27	14	IR (c)
Hemoglobin	57	20	23	0	2 nd derivative
	48	25	27	0	Fsd
	77	0	9	14	X-Ray (a)
	87	0	7	6	X-Ray (b)
	78	12	10	0	IR (c)
Myoglobin	66	25	9	0	2 nd derivative
	59	18	23	0	Fsd
	74	0	13	13	X-Ray (a)
	85	0	8	7	X-Ray (b)
	85	7	8	0	IR (c)
Cytochrome C	42	21	23	14	2 nd derivative
	45	16	25	14	Fsd
	41	0	17	41	X-Ray (a)
	48	10	17	25	X-Ray (b)
	42	21	25	12	IR (c)
α -Chymotrypsin	6	47	36	11	2 nd derivative
	7	44	31	18	Fsd
	8	50	27	15	X-Ray (b)
	9	47	30	14	IR (c)
Trypsin	24	43	25	8	2 nd derivative
	15	38	30	17	Fsd
	9	56	24	11	X-Ray (b)
	9	44	38	9	IR (c)
RNase A	10	55	33	2	2 nd derivative
	13	42	36	9	Fsd
	21	33	15	32	X-Ray (a)
	23	46	21	10	X-Ray (b)
	15	40	36	9	IR (c)
Concavaline A	13	51	29	20	2 nd derivative
	7	56	27	10	Fsd
	4	45	11	41	X-Ray (a)
	3	60	22	15	X-Ray (b)
	8	58	26	8	IR (c)
IgG	5	52	33	10	2 nd derivative
	12	50	30	8	Fsd

	7	50	14	29	X-Ray (a)
	3	67	18	12	X-Ray (b)
	3	64	28	5	IR (c)
Pepsin	18	52	22	8	2 nd derivative
	12	47	19	12	Fsd
	15	44	14	28	X-Ray (a)

(a) SwissProt/UniProt : <http://www.uniprot.org/uniprot/?query=reviewed%3Ayes>

(b) Levitt and Greer (Levitt M., 1977)

(c) Dong, Huang and Caughey (Dong A., 1990)

Results for most proteins are in the same proportion than X-Ray references. That confirms the validity of the analysis. Looking further, there is a big difference, about 20 % in some cases for secondary structure determination. The Fourier self-deconvolution method shows results similar to 2nd derivate one.

Figure 25 amply demonstrates all the similarities of the two methods. All the most important spectrum are visible on both method and even on the non-processed spectrum.

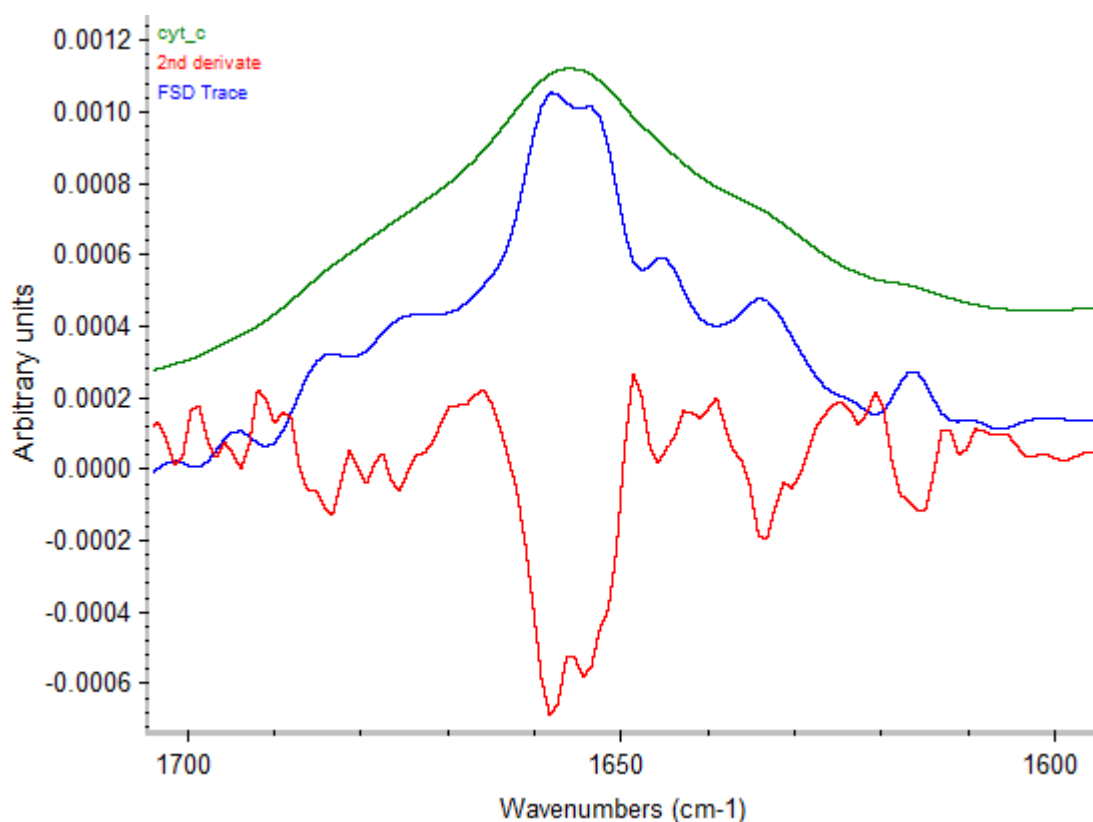


Figure 25: comparison between non processed spectrum, 2nd derivative one and deconvoluted one. Green: non processed spectrum. Blue: self deconvoluted spectrum. Red: 2nd derivative spectrum.

5 Discussion

5.1 Water and vapour subtraction

Most publications (Dong A., 1990) (Kong J., 2007) used a visual check to approve the subtraction. Due to the randomness of such a process because of a high subjective evaluation, the choice of an automatic subtraction based on defined parameter make a good method to suppress this subjective part. By using this automatic subtraction on a MATLAB script, we obtain good results on all the tested protein with the possibility of making a manual control at all the steps of the processing to avoid aberrations that can occur, like a wrong ratio because the concrete one is out of the tested range.

The water is still subtracting base on the area between 1750 and 2000. But, only three points are used and we search the subtraction ratio that made these three points on a straight line. This mean calculating the linear regression of these wavelengths after subtraction for all ratios and keeping the one with the best correlating coefficient. The chosen wavelength mustn't be on a peak of the vapour spectrum and they must be split on all the length but with these two conditions, any point can be used with the same result at the end. For certain protein, pepsin for example, we can observe an absorbance between 1700 and 1780. If one of the used points is in this area, the subtraction can be well done for most protein but will be completely aberrant in the case of the pepsin. To avoid complication due to this effect, the wavelengths used for the subtraction must be chosen out of this area.

5.2 Vapour subtraction

Vapour subtraction is an important part of the analysis. As for the water, vapour absorbs on the amide I area. This problem is that even with a purge or a higher resolution and number of scan of the spectrum, it is not possible to obtain a straight base line after subtraction. Figure 26 shows the problem of the subtraction. When subtracting the vapour, when one peak is correctly subtracted, another isn't.

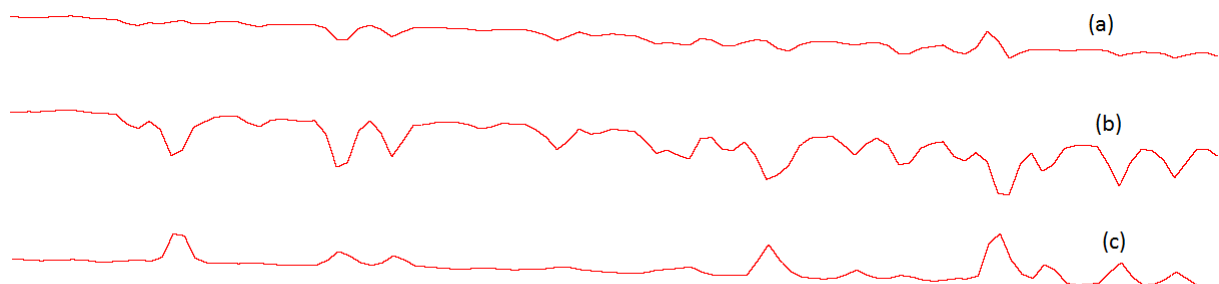


Figure 26: subtraction of vapour of a protein spectrum. (a) Optimal subtraction. (b) vapour excessively subtracted. (c) vapour insufficiently subtracted

Parameters used for the subtraction are subjectively chosen and give good results on all tested protein. By changing the method or processing, the subtraction of vapour must be redefined. A high ratio of one secondary structure can create a shoulder on the peak that can be seen as a peak from vapour. Due to this effect, it's important to subtract vapour without looking between 1600 and 1700 cm^{-1} . Particularly when making a manual subtraction that is made by the operator only.

5.3 Results

Results on proteins containing high ration of α -helix need a different integration due to a distortion of the environment around the alpha helix peak. Figure 27 shows the integration of the spectrum of haemoglobin.

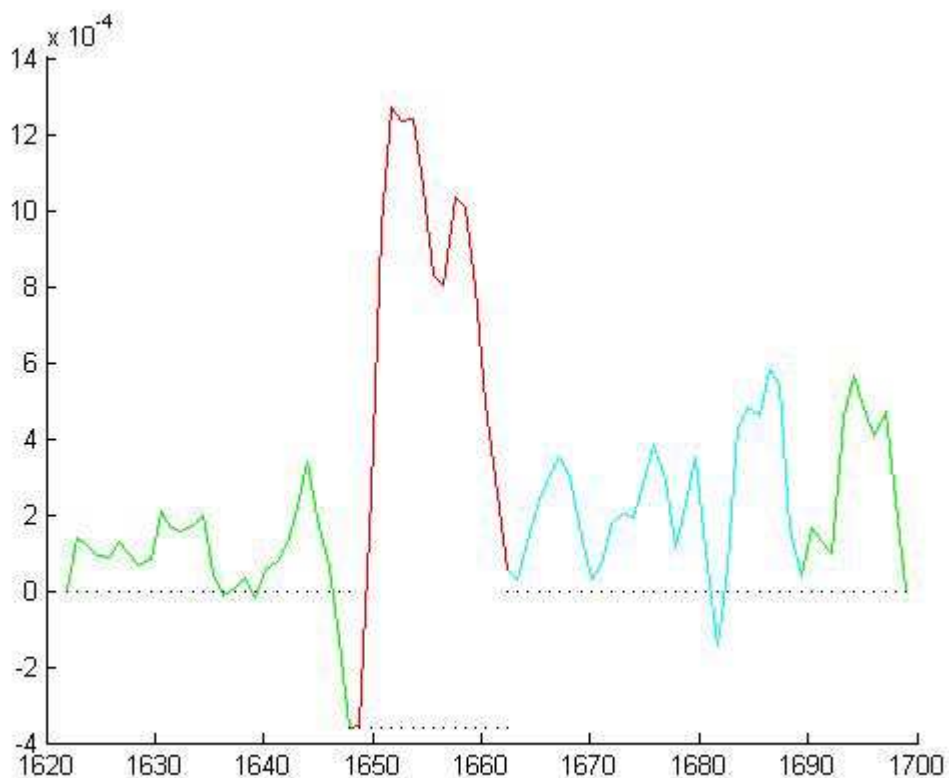


Figure 27: Integration of 2nd derivative spectrum of haemoglobin

The base line for integration of alpha helix had to be change to fit better to the model. The used integration method place the base line to the lowest side-peak of the alpha-helix one. A constantly underestimate proportion of alpha helix is obtained for proteins with more than 60 % of alpha helix with both method.

To compare the result to the references, it is necessary to compare references with each other. It is normal to get some difference between IR and X-Ray (Kumosinski T. F., 1996). The two methods don't work in the same way and there are different methods to do the IR determination. But even between two completely different methods, the proportions are the same and the result can be determined as similar. But even with the same method, when comparing the two X-Ray references, there are huge differences. Reference (a) is the more recent one. The bigger difference is the recurrent higher ratio of random coil on the reference (a). This high ratio of random coil has an impact on the three other structures.

The two methods show good result but none of them can be determine as better, only by looking with result. To determine which one is the best, we must know what the objective of this analysis is. If the objective is to know precisely the right secondary structure ratio, this method isn't the good one. But if the objective is to know, with a relative precision and by knowing that the result isn't the truth but depend on the used determination method, then this method works. On the same way, analysis of protein folding can easily be done with this method.

6 Conclusion and outlook

The development of an analytical method to quantify the secondary structure motives of a protein permitted to understand better the mechanism of secondary structure determination by FTIR. By analysing ten model proteins, the results obtained and compared to the one published by other people, had to be looked with an open mind. Most of result can't really get compared with the work of someone else due to the difference between the method and method parameters. To get a global idea of a protein structure, such comparison can be made, but to get a more precise one, the only way is to use the same method.

Getting the secondary structure motives proportion with such an easy method like FTIR is a great thing, it allows with low cost an easy and fast analysis. By obtaining the secondary structure, it is now possible to analysis the refolding of a denatured protein or of one obtains from synthesis. More investigation should be done in the analysis of unfold protein and compared to fold one to confirm the validity of the method in these case.

7 Bibliography

Alberts B., J. A. (2002). *Molecular Biology of the Cell. 4th edition*. New York: Garland Science.

Barth, A. (2007). Infrared spectroscopy of proteins. *Biochimica et Biophysica Acta (1767)* , 1073-1101.

Byler D.M., S. H. (1986). Examination of the secondary sstructure of proteins by deconvoluted FTIR spectra. *Biopolymers (25)* , 469-487.

Dong A., H. P. (1990). Protein Secondary Structures in Water from Second-Derivative Amide I Infrared Spectra. *Biochemistry (29)* , 3303-3308.

Kabsch W., S. C. (1983). Dictionary of protein secondary structure: pattern recognition of hydrogen-bonded and geometrical features. *Biopolymers (22)* , 2577-2637.

Kong J., Y. S. (2007). Fourier Transform Infrared Spectroscopic Analysis of Protein Secondary Structures. *Acta Biochimica et Biophysica Sinica (39)* , 549-559.

Kumosinski T. F., U. J. (1996). Quantification of the global secondary structure of globular proteins by FTIR spectroscopy: comparison with X-ray crystallographic structure. *Talanta (43)* , 199-219.

Levitt M., G. J. (1977). Automatic Identification of Secondary Structure in Globular Proteins. *Journal of Molecular Biology (114)* , 181-239.

Pelton J. T., M. L. (2000). Spectroscopic Methods for Analysis of Protein Secondary Structure. *Analytical Biochemistry (277)* , 167-176.

8 Annexe

- 1 Standard Operative Procedure: Analyse de la structure secondaire de protein (in French)
- 2 MATLAB script of SOP
- 3 Explication of MATLAB script of SOP

HES–SO Valais	Analyse de la structure secondaire de protéine	Version 1
	Domaine d'application : CA	

1. Domaine d'application

Détermination des ratios des différentes structures secondaires présentes d'une protéine en solution aqueuse à 5% m/v soit 50 mg/ml.

2. Mesure de précaution

Précautions standards lors de l'utilisation de produits chimiques. Les précautions à respecter en cours d'analyse sont citées au fil de ce mode opératoire.

3. Principe de détermination

Analyse de structure secondaire par Infrarouge à transformée de Fourier (FTIR) suivi d'un traitement de donnée sur MATLAB.

4. Appareillage et produits

4.1. Appareillage

- FTIR
- Spacer 6 μm
- OMNIC
- MATLAB

4.2. Produits

- Azote 4.5
- Eau MilliQ

5. Préparation des échantillons, paramètre de mesure

5.1. Préparation de la référence de l'eau

25 μl d'eau MilliQ sont introduits directement dans le trou de la cellule. Au moyen d'une seringue remplie d'air, poussé l'échantillon jusqu'à ce que le liquide remplisse la totalité du volume du spacer.

5.2. Référence de la vapeur d'eau

L'analyse de la vapeur d'eau se fait sans cellule de mesure, avec l'air ambiant comme échantillon.

5.3. Préparation des échantillons à analyser

Dans un eppendorf de 1.5ml, transférer successivement 1.25mg de protéine à analyser et 25 μl d'eau MilliQ. Agiter puis centrifuger 3 secondes. Répéter éventuellement la manœuvre si la protéine à mal été solubilisée.

25 μl de l'échantillon sont introduits directement dans le trou de la cellule. Au moyen d'une seringue remplie d'air, poussé l'échantillon jusqu'à ce que le liquide remplisse la totalité du volume du spacer.

HES–SO Valais	Analyse de la structure secondaire de protéine	Version 1
	Domaine d'application : CA	

5.4. Mesure du background

Le background est mesuré sans cellule de mesure avec une purge de 2 bars maintenu durant 10 minutes avant l'analyse et conservée durant toute la durée de l'analyse.

5.5. Analyse

L'analyse de l'eau et de la vapeur d'eau ne doit pas être effectuée à chaque fois.

Pour l'analyse de protéine et de la référence de l'eau, introduire la cellule de mesure dans l'appareil, fermer l'appareil, fixer la pression de sortie de l'azote à 2 bars. Purger durant 10 minutes. En conservant le débit d'azote, collecter l'échantillon en sélectionnant « Collect Sample » sous l'onglet « Collect ».

Pour l'analyse de la vapeur d'eau, sans introduire la cellule de mesure et sans purge d'azote, collecter le spectre de mesure de la même manière que cité précédemment.

5.6. Paramètre de mesure

- **Collect**
 - Nombre de scans : 100
 - Résolution : 2
 - Format Final : SingleBeam
 - Correction : aucune
 - *Save interferograms*
 - Aperture : 30
 - Range : 4000-400 cm^{-1}

6. Traitement des données

6.1. Spectres de références

Les spectres de références de l'eau (*Water*), de la vapeur d'eau (*Vapor*) et du background (*background*) sont présent sous :

`C:\Users\lf103\Documents\OMNIC\Spectra\Protein_folding\reference`

6.2. Traitement du spectre de la protéine par OMNIC

Les étapes du traitement des spectres sont effectuées en absorbance. Les spectres initiaux sont reprocessé en absorbance avec le spectre *Background.spa* comme background. Le chemin logique pour effectuer la manipulation est le suivant :

Process > Reprocess > Sélectionner «Absorbance» > Choisir le Background > OK

Le spectre en absorbance est affiché de 4000 à 400 cm^{-1} et est sauvegardé en format **.csv**.

HES–SO Valais	Analyse de la structure secondaire de protéine	Version 1
	Domaine d'application : CA	

6.3. Traitement par MATLAB

Déplacer le spectre à analyser dans le répertoire MATLAB `C:\Users\j103\Documents\MATLAB`. Lancer l'application MATLAB grâce au raccourci présent sur le bureau ou en cliquant sur **matlab.exe** dans `C:\Program Files\MATLAB\R2010a\bin\`. Vérifier que votre spectre apparaît dans la fenêtre «Current Folder» située à gauche dans MATLAB. Si la fenêtre «Current Folder» n'est pas visible, Sélectionner «Current Folder» sous l'onglet «Desktop» de la barre de raccourci MATLAB.

Pour effectuer l'analyse du spectre voulu, entré dans la fenêtre «Command Window» la fonction suivante :

`Prot_Struct_sec('Spectre à analyser', 'spectre de l'eau', 'spectre de la vapeur d'eau')`

MATLAB affichera après quelques secondes de calcul la fraction de β -turn sous `frac_turn`, la fraction d' α -hélice sous `frac_ahelice` et la fraction de β -sheet sous `frac_bsheet_tot`. La figure 4 montre un exemple avec le spectre du Cytochrome C (nommé `Cyt_C_nt.spc`). 5 spectres sont également générés pour permettre le contrôle des différentes étapes de l'analyse. Les paramètres d'acceptation sont décrits dans les chapitres 6.2 à 6.5. La figure 5 montre ces 5 spectres générés par l'analyse du cytochrome C.



```

Command Window
New to MATLAB? Watch this Video, see Demos, or read Getting Started.
>> Prot_Struct_sec('Cyt_C_nt.spc', 'Water.spc', 'Vap.spc')
Reading header for file: Cyt_C_nt.spc
File contains 1 scans
Reading header for file: Water.spc
File contains 1 scans
Reading header for file: Vap.spc
File contains 1 scans

frac_turn =

    23.6723

frac_ahelice =

    43.1596

frac_bsheet =

    19.1214
|
frac_bsheet_2 =

    5.4101

frac_bsheet_tot =

    24.5315

```

Figure 1: Fenêtre *Command Window* de l'analyse du Cytochrome C par MATLAB

HES-SO Valais	Analyse de la structure secondaire de protéine	Version 1
	Domaine d'application : CA	

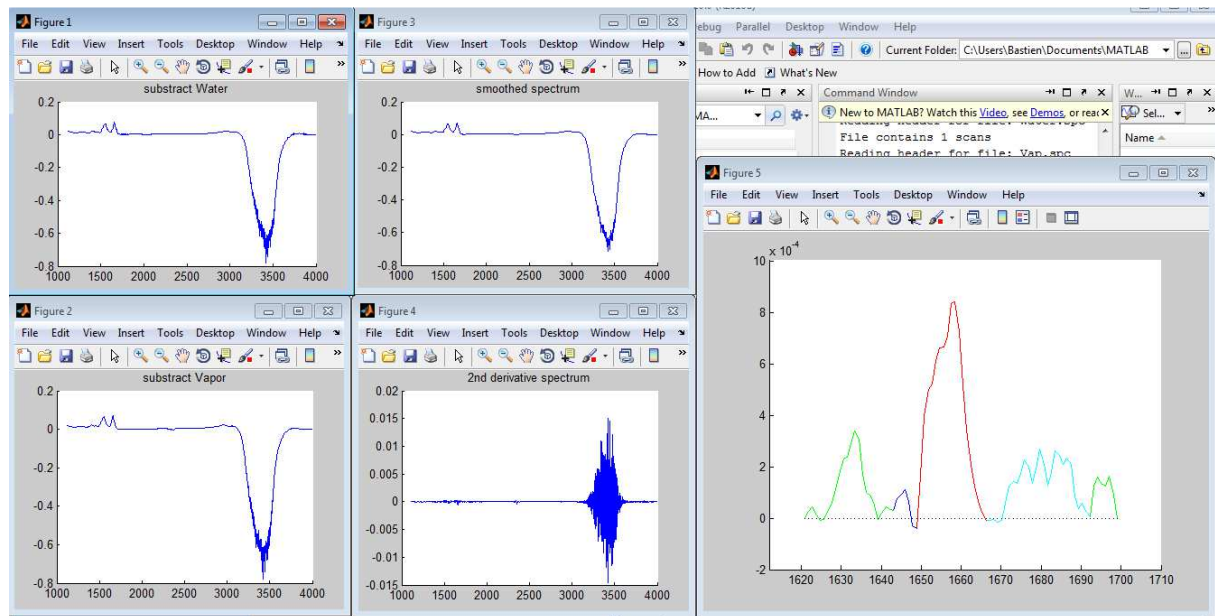


Figure 2: Spectre générés par l'analyse MATLAB. Figure 1°: résultat de la soustraction de l'eau. Figure 2 : résultat de la soustraction de la vapeur d'eau. Figure 3 : résultat de l'affinage du spectre. Figure 4 : 2^{ème} dérivée du spectre. Figure 5 : Découpage de l'intégration du spectre final.

6.4. Soustraction du signal de l'eau

La soustraction est contrôlée dans la zone de 1750 à 2000 cm^{-1} . Cette zone doit apparaître comme plate pour confirmer que la soustraction a eu lieu correctement. Si la soustraction n'est pas réalisée correctement, elle doit être effectuée manuellement sur le logiciel OMNIC. Pour effectuer la soustraction, sélectionner le spectre de la protéine puis le spectre de l'eau ouvert dans la même fenêtre. Sélectionner «soustraire» dans l'onglet «Process» ou utiliser le raccourci « CTRL + U ».

Modifier le facteur de soustraction avec la molette (figure 3, A) et sélectionner l'intervalle 1650 – 2000 à l'aide de l'outil de sélection (figure 3, B). Modifier le facteur jusqu'à une soustraction correcte (figure 4).

HES-SO Valais	Analyse de la structure secondaire de protéine	Version 1
	Domaine d'application : CA	



Figure 3 : Soustraction de l'eau du spectre du cytochrome C. A : molette du facteur de soustraction, B : intervalle de sélection.



Figure 4 : soustraction de l'eau correctement effectuée pour le cytochrome C.

HES-SO Valais	Analyse de la structure secondaire de protéine	Version 1
	Domaine d'application : CA	

6.5. Soustraction du signal de la vapeur d'eau

La soustraction de la vapeur d'eau est considérée comme correcte lorsque le signal dû à la vapeur d'eau est le plus petit possible. A partir du spectre dont l'eau a été soustraite, soustraire la vapeur d'eau en suivant la même procédure que pour l'eau dans l'intervalle 1750-1850. Lorsque la ligne de base est la plus plate possible, la soustraction est considérée comme bonne. La figure 5 montre la soustraction du cytochrome C.



Figure 5: soustraction de la vapeur d'eau du cytochrome C.

6.6. Génération de la 2^{ème} dérivée du spectre

Le spectre de la protéine est maintenant affiné en utilisant un «smooth» de Savitzky-Golay à 9 point. Sélectionner «smooth» dans l'onglet «Process», puis, dans le menu déroulant, sélectionner «9» et appuyer sur OK.

La deuxième dérivée est obtenue selon l'algorithme de Savitzky-Golay à 5 point. Sélectionner «Derivative» dans l'onglet «Process». Sélectionner «Derivative Second» cocher la case «Savitzky-Golay» et sélectionner «5 point» et «Polynomial order 3». La figure 6 montre la fenêtre de dérivée du programme OMNIC.

HES-SO Valais	Analyse de la structure secondaire de protéine	Version 1
	Domaine d'application : CA	

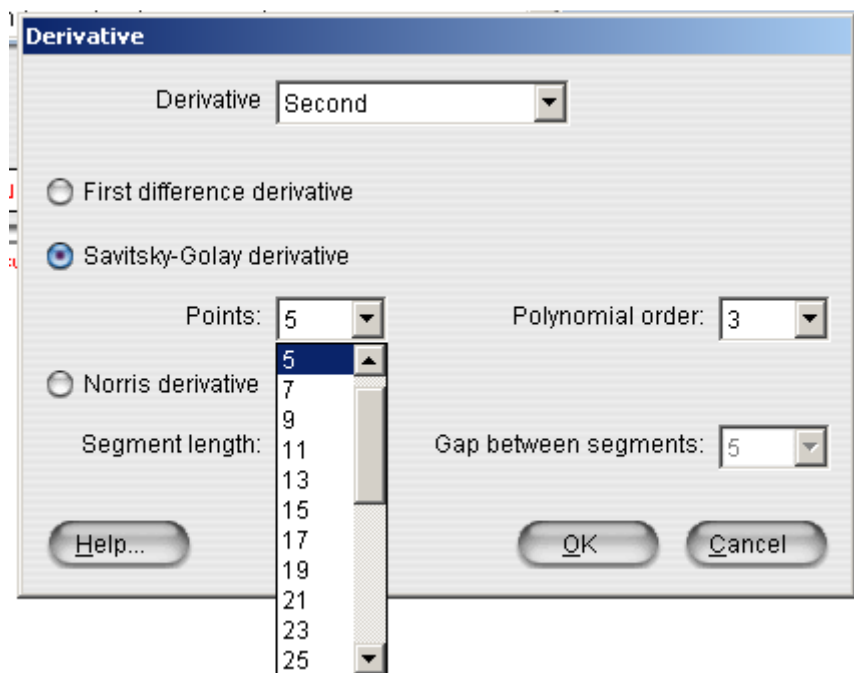


Figure 6: Fenêtre de dérivée du logiciel OMNIC.

6.7. Calcul des ratios de structures secondaires par MATLAB.

Sauvegarder le spectre de la deuxième dérivée au format **.spc**. La structure secondaire est calculée en utilisant le scripte **Manual_area()** avec les six longueur d'onde de la plus petite à la plus grande dans MATLAB.

Pour utiliser le script, introduire dans la fenêtre «Command Window»

Par exemple :

```
Manual_area('Spectre à analyser',1621,1643,1649,1666,1692,1699)
```

MATLAB affichera après quelques secondes de calcul la fraction de β -turn sous *frac_turn*, la fraction d' α -hélice sous *frac_ahelice* et la fraction de β -sheet sous *frac_bsheets_tot*.

7. Modification de l'intégration

L'intégration de la deuxième dérivée peut mal se faire du à un léger décalage de certain pic. Dans le cas d'une intégration dont certain pic ne sont pas pris en compte alors qu'ils le devraient ou sont pris en compte alors qu'ils ne le devraient pas, il est possible de modifier les intervalles d'intégration en utilisant **Manual_Prot()** avec les six longueur d'onde de la plus petite à la plus grande.

Pour le cytochrome C :

```
Manual_Prot('Spectre à analyser','spectre de l'eau','spectre de la vapeur d'eau',1621,1643,1649,1666,1692,1699)
```

HES–SO Valais	Analyse de la structure secondaire de protéine	Version 1
	Domaine d'application : CA	

8. Pics spécifiques aux différentes structures secondaires

Le tableau 1 montre les différents pics spécifiques aux différentes structures secondaires ainsi que leurs longueurs d'onde.

Tableau 1: fréquences et assignement des structures secondaires dans la bande amide I

fréquence	assignement
1624	β -feuillet
1627	β -feuillet
1633	β -feuillet
1638	β -feuillet
1642	β -feuillet
1648	Bobine aléatoire
1656	α -hélice
1663	3_{10} -hélice
1667	β -turn
1675	β -turn
1680	β -turn
1685	β -turn
1691	β -feuillet
1696	β -feuillet

Annexe 2 : Code MATLAB

Script « Prot_Struct_sec() »

```
function Prot_Struct_sec(f,g,h)

close all
W1=2070;
W2=2193;
W3=2318;

V1=2317;
V2=2312;
V3=2310;
V4=2305;

f1=' .spec';
f2=' _sub';
f3=' .xls';
f4=[f f1];
f5=[f f3];
f6=[f f2 f3];
g1=[g f1];
h1=[h f1];

spec_1=tgspcread(f4);
spec_2=tgspcread(g1);
spec_3=tgspcread(h1);

%xlswrite(f5,[spec_1.X,spec_1.Y]);

spec_l=substract_Water(spec_1, spec_2,W1,W2,W3);
spec_m=substract_Vapor(spec_1, spec_3,V1,V2,V3,V4);

%xlswrite(f6,[spec_m.X,spec_m.Y]);

%%%%%%%%%%%%%%%%%%%%%%%%%%%%%%%%%%%%%%%%%%%%%%%%%%%%%%%%%%%%%%%%%%%%%%%%
%contrôle de la soustraction%
%%%%%%%%%%%%%%%%%%%%%%%%%%%%%%%%%%%%%%%%%%%%%%%%%%%%%%%%%%%%%%%%%%%%%%%%

figure
hold on
plot(spec_1.X,spec_1.Y);
title('substract Water');

figure;
hold on
plot(spec_m.X,spec_m.Y);
title('substract Vapor');

spec_n.Y=smooth(spec_m.Y,9,'sgolay',3);

spec_n.X=spec_m.X;

figure;
hold on
plot(spec_n.X,spec_n.Y);
title('smoothed spectrum');

%%%%%%%%
%2nd derivative
%%%%%%%%

N = 3;
F = 5;
[b,g] = sgolay(N,F);

dx = 1;

HalfWin = ((F+1)/2) -1;
for n = (F+1)/2:2997-(F+1)/2,
    % 2nd differential
```

Annexe 2 : Code MATLAB

```
        SG2(n) = 2*dot(g(:,3)', spec_n.Y(n - HalfWin: n + HalfWin))';
end

SG2 = SG2/(dx*dx);

figure;
hold on
plot(spec_n.X(1:2994),SG2);
title('2nd derivative spectrum');
hold off

%%%%%%%%%%%%%%%%%%%%%%%%%%%%%%%%%%%%%%%%%%%%%%%%%%%%%%%%%%%%%%%%%%%%%%%%
%4th derivative
%%%%%%%%%%%%%%%%%%%%%%%%%%%%%%%%%%%%%%%%%%%%%%%%%%%%%%%%%%%%%%%%%%%%%%%%

HalfWin = ((F+1)/2) -1;
for n = (F+1)/2:2994-(F+1)/2,
    SG4(n) = 2*dot(g(:,3)', SG2(n - HalfWin: n + HalfWin))';
end

SG4 = SG4/(dx*dx);
SG4_2.X=spec_n.X(2390:2500);
SG4_2.Y=SG4(2390:2500)';
figure;
hold on
plot(SG4_2.X,SG4_2.Y);

[pk,locs]=findpeaks(SG4_2.Y);

%%%%%%%%%%%%%%%%%%%%%%%%%%%%%%%%%%%%%%%%%%%%%%%%%%%%%%%%%%%%%%%%%%%%%%%%
%paramètre d'integration
%%%%%%%%%%%%%%%%%%%%%%%%%%%%%%%%%%%%%%%%%%%%%%%%%%%%%%%%%%%%%%%%%%%%%%%%

[r,WL3]=find(SG4==min(SG4(2435:2441)));

[r,WL1]=find(SG4==min(SG4(2465:2471)));
[r,WL2]=find(SG4==min(SG4(2442:2448)));
[r,WL4]=find(SG4==min(SG4(2419:2426)));
[r,WL5]=find(SG4==min(SG4(2392:2397)));
[r,WL6]=find(SG4==min(SG4(2382:2390)));

areabast(SG2,spec_m,WL1,WL2,WL3,WL4,WL5,WL6)

end

function [spec_f]=substract_Water(spec_1, spec_2, W1, W2, W3)%, W4, W5)
    fact_W=0;
    rmax=0;

    %%%%%%%%%%%%%%%%%%%%%%%%%%%%%%%%%%%%%%%%%%%%%%%%%%%%%%%%%%%%%%%%%%%%%%%%%
    %boucle "for" dont on fait varier le facteur de soustraction%
    %du spectre de la protéine par le spectre de l'eau%%%%%%%%
    %%%%%%%%%%%%%%%%%%%%%%%%%%%%%%%%%%%%%%%%%%%%%%%%%%%%%%%%%%%%%%%%%%%%%%%%%

    for i=0.5:0.0001:1.5
        t1=spec_1.Y(W1)-i*spec_2.Y(W1);
        t2=spec_1.Y(W2)-i*spec_2.Y(W2);
        t3=spec_1.Y(W3)-i*spec_2.Y(W3);

        x=[spec_1.X(W1) spec_1.X(W2) spec_1.X(W3)];
        y=[t1 t2 t3];

        c=corrcoef(x,y);
        r=c(1,2)^2;

        %%%%%%%%%%%%%%%%%%%%%%%%%%%%%%%%%%%%%%%%%%%%%%%%%%%%%%%%%%%%%%%%%%%%%%%%%
        %lorsque le coefficient de corrélation est le plus proche de 1,%
        %la zone où l'eau liquide absorbe a été soustraite au maximum%%
        %%%%%%%%%%%%%%%%%%%%%%%%%%%%%%%%%%%%%%%%%%%%%%%%%%%%%%%%%%%%%%%%%%%%%%%%%

        if (r>rmax)
            fact_W=i;
            rmax=r;
        end
    end
    spec_f.X=spec_1.X;
    spec_f.Y=spec_1.Y-fact_W*spec_2.Y;
```


Annexe 2 : Code MATLAB

```
%%%%%%%%%%%%%%%%%%%%%%%%%%%%%%%%%%%%%%%%%%%%%%%%%%%%%%%%%%%%%%%%%%%%%%%%
%une fois le facteur de soustraction déterminé, la totalité du spectre est soustrait%
%%%%%%%%%%%%%%%%%%%%%%%%%%%%%%%%%%%%%%%%%%%%%%%%%%%%%%%%%%%%%%%%%%%%%%%%

fact_W
end

function [spec_g]=subtract_Vapor(spec_f, spec_3, V1, V2, V3, V4)
fact_V=0;
rmax=0;
for i=-0.3:0.0001:0.3
    t1=spec_f.Y(V1)-i*spec_3.Y(V1);
    t2=spec_f.Y(V2)-i*spec_3.Y(V2);
    t3=spec_f.Y(V3)-i*spec_3.Y(V3);
    t4=spec_f.Y(V4)-i*spec_3.Y(V4);

    x=[spec_f.X(V1) spec_f.X(V2) spec_f.X(V3) spec_f.X(V4)];
    y=[t1 t2 t3 t4];

    c=corrcoef(x,y);
    r=c(1,2)^2;

    if (r>rmax)
        fact_V=i;
        rmax=r;
    end
end
spec_g.X=spec_f.X;
spec_g.Y=spec_f.Y-fact_V*spec_3.Y;
fact_V
end

function areabast (SG2,spec_m,WL1,WL2,WL3,WL4,WL5,WL6)%wavelength_1,wavelength_2

turn_2=WL4;
turn_1=WL5;
alpha_1=WL3;
beta_2=WL1;
beta_1=WL2;
beta_3=WL6;

spec.X=[spec_m.X(WL6:WL1)'];
spec.Y=[SG2(WL6:WL1)'];

%Base ligne

poly_x=[spec.X(WL1-WL6+1) spec.X(WL6-WL6+1)];
poly_y=[spec.Y(WL1-WL6+1) spec.Y(WL6-WL6+1)];
p=polyfit(poly_x,poly_y,1);
BL=spec.X*p(1)+p(2);

BLa=BL;

%subtract
spec_f.X=spec.X;
spec_f.Y=(spec.Y-BL')*(-1);
spec_f_a.Y=(spec.Y-BLa')*(-1);

%area_curve
ahelice=trapz(spec_f.X(turn_2-beta_3+1:alpha_1-beta_3+1),spec_f.Y(turn_2-beta_3+1:alpha_1-
beta_3+1));
tot=trapz(spec_f.X,spec_f.Y)-ahelice;
turn=trapz(spec_f.X(turn_1-beta_3+1:turn_2-beta_3+1),spec_f.Y(turn_1-beta_3+1:turn_2-
beta_3+1));
%if BLa>BL
%    ahelice=trapz(spec_f.X(turn_2-beta_3+1:alpha_1-beta_3+1),spec_f_a.Y(turn_2-
beta_3+1:beta_1-beta_3+1));
%    tot=tot+ahelice;
%else
ahelice=trapz(spec_f.X(turn_2-beta_3+1:alpha_1-beta_3+1),spec_f.Y(turn_2-
beta_3+1:alpha_1-beta_3+1));
tot=tot+ahelice;
%end
bsheet=trapz(spec_f.X(beta_1-beta_3+1:beta_2-beta_3+1),spec_f.Y(beta_1-beta_3+1:beta_2-
beta_3+1));
```

Annexe 2 : Code MATLAB

```
bsheet_2=trapz(spec_f.X(1:turn_1-beta_3+1),spec_f.Y(1:turn_1-beta_3+1));

figure
hold on
plot(spec_f.X(turn_1-beta_3+1:turn_2-beta_3+1),spec_f.Y(turn_1-beta_3+1:turn_2-
beta_3+1),'Color','c')
%figure
%if BLa>BL
%   plot(spec_2.X(turn_2-beta_3+1:beta_1-beta_3+1),spec_f.Y(turn_2-beta_3+1:beta_1-
beta_3+1),'Color','r')
%else
   plot(spec_f.X(turn_2-beta_3+1:alpha_1-beta_3+1),spec_f.Y(turn_2-beta_3+1:alpha_1-
beta_3+1),'Color','r')
%end
plot(spec_f.X(alpha_1-beta_3+1:beta_1-beta_3+1),spec_f.Y(alpha_1-beta_3+1:beta_1-
beta_3+1),'Color','b')
plot(spec_f.X(beta_1-beta_3+1:beta_2-beta_3+1),spec_f.Y(beta_1-beta_3+1:beta_2-
beta_3+1),'Color','g')
plot(spec_f.X(1:turn_1-beta_3+1),spec_f.Y(1:turn_1-beta_3+1),'Color','g')
plot(spec_f.X(1:beta_2-beta_3+1),0,'Color','black')

frac_turn=turn/tot*100
frac_ahelice=ahelice/tot*100
frac_bsheet=bsheet/tot*100;
frac_bsheet_2=bsheet_2/tot*100;
frac_bsheet_tot=frac_bsheet+frac_bsheet_2
t100=frac_turn+frac_ahelice+frac_bsheet_tot;

end
```

Script « Manual_Prot »

```
function Manual_Prot(f,g,h,wave1,wave2,wave3,wave4,wave5,wave6)

WL1=round(-1.0371*wave1+4149);
WL2=round(-1.0371*wave2+4149);
WL3=round(-1.0371*wave3+4149);
WL4=round(-1.0371*wave4+4149);
WL5=round(-1.0371*wave5+4149);
WL6=round(-1.0371*wave6+4149);

close all
W1=2203;
W2=2277;
W3=2358;

V1=2317;
V2=2312;
V3=2310;
V4=2305;

%%%%%%%%%%%%%%%%%%%%%%%%%%%%%%%%%%%%%%%%%%%%%%%%%%%%%%%%%%%%%%%%%%%%%%%%
%chargement des spectres de protéine, eau, vapeur d'eau%
%%%%%%%%%%%%%%%%%%%%%%%%%%%%%%%%%%%%%%%%%%%%%%%%%%%%%%%%%%%%%%%%%%%%%%%%

f1='.spc';
f2='_sub';
f3='.xls';
f4=[f f1];
f5=[f f3];
f6=[f f2 f3];
g1=[g f1];
h1=[h f1];

spec_1=tgspcread(f4);
spec_2=tgspcread(g1);
spec_3=tgspcread(h1);

%xlswrite(f5,[spec_1.X,spec_1.Y]);
spec_1=substract_Water(spec_1, spec_2,W1,W2,W3);
```

Annexe 2 : Code MATLAB

```
spec_m=substract_Vapor(spec_1, spec_3,V1,V2,V3,V4);
%xlswrite(f6,[spec_m.X,spec_m.Y]);

%%%%%%%%%%%%%%%%%%%%%%%%%%%%%%%%%%%%%%%%%%%%%%%%%%%%%%%%%%%%%%%%%%%%%%%%
%contrôle de la soustraction%
%%%%%%%%%%%%%%%%%%%%%%%%%%%%%%%%%%%%%%%%%%%%%%%%%%%%%%%%%%%%%%%%%%%%%%%%

figure
hold on
plot(spec_1.X,spec_1.Y);
title('subtract Water');

figure;
hold on
plot(spec_m.X,spec_m.Y);
title('subtract Vapor');

spec_n.Y=smooth(spec_m.Y,9,'sgolay',3);
spec_n.X=spec_m.X;

figure;
hold on
plot(spec_n.X,spec_n.Y);
title('smoothed spectrum');

%%%%%%%%
%2nd derivative
%%%%%%%%

N = 3;
F = 5;
[b,g] = sgolay(N,F);

dx = 1;

HalfWin = ((F+1)/2) -1;
for n = (F+1)/2:2997-(F+1)/2,

    SG2(n) = 2*dot(g(:,3)', spec_n.Y(n - HalfWin: n + HalfWin));
end

SG2 = SG2/(dx*dx);

figure;
hold on
plot(spec_n.X(1:2994),SG2);
title('2nd derivative spectrum');
hold off

%%%%%%%%
%4th derivative
%%%%%%%%

HalfWin = ((F+1)/2) -1;
for n = (F+1)/2:2994-(F+1)/2,
    SG4(n) = 2*dot(g(:,3)', SG2(n - HalfWin: n + HalfWin));
end

SG4 = SG4/(dx*dx);
SG4_2.X=spec_n.X(2390:2500);
SG4_2.Y=SG4(2390:2500)';

areabast(SG2,spec_m,WL1,WL2,WL3,WL4,WL5,WL6)

end

function [spec_f]=substract_Water(spec_1, spec_2, W1, W2, W3)%, W4, W5)
fact_W=0;
rmax=0;

%%%%%%%%%%%%%%%%%%%%%%%%%%%%%%%%%%%%%%%%%%%%%%%%%%%%%%%%%%%%%%%%%%%%%%%%
%boucle "for" dont on fait varier le facteur de soustraction%
%du spectre de la protéine par le spectre de l'eau%%%%%%%%
%%%%%%%%%%%%%%%%%%%%%%%%%%%%%%%%%%%%%%%%%%%%%%%%%%%%%%%%%%%%%%%%%%%%%%%%

for i=0.5:0.0001:1.5
    t1=spec_1.Y(W1)-i*spec_2.Y(W1);
```

Annexe 2 : Code MATLAB

```

t2=spec_1.Y(W2)-i*spec_2.Y(W2);
t3=spec_1.Y(W3)-i*spec_2.Y(W3);

x=[spec_1.X(W1) spec_1.X(W2) spec_1.X(W3)];
y=[t1 t2 t3];

c=corrcoef(x,y);
r=c(1,2)^2;

%%%%%%%%%%%%%%%%%%%%%%%%%%%%%%%%%%%%%%%%%%%%%%%%%%%%%%%%%%%%%%%%%%%%%%%%
%lorsque le coefficient de correlation est le plus proche de 1,%
%la zone où l'eau liquide absorbe a été soustraite au maximum%%
%%%%%%%%%%%%%%%%%%%%%%%%%%%%%%%%%%%%%%%%%%%%%%%%%%%%%%%%%%%%%%%%%%%%%%%%

    if (r>rmax)
        fact_W=i;
        rmax=r;
    end
end
spec_f.X=spec_1.X;
spec_f.Y=spec_1.Y-fact_W*spec_2.Y;

%%%%%%%%%%%%%%%%%%%%%%%%%%%%%%%%%%%%%%%%%%%%%%%%%%%%%%%%%%%%%%%%%%%%%%%%
%une fois le facteur de soustraction déterminé, la totalité du spectre est soustrait%
%%%%%%%%%%%%%%%%%%%%%%%%%%%%%%%%%%%%%%%%%%%%%%%%%%%%%%%%%%%%%%%%%%%%%%%%

fact_W
end

function [spec_g]=substract_Vapor(spec_f, spec_3, V1, V2, V3, V4)
fact_V=0;
rmax=0;
for i=-0.3:0.0001:0.3
    t1=spec_f.Y(V1)-i*spec_3.Y(V1);
    t2=spec_f.Y(V2)-i*spec_3.Y(V2);
    t3=spec_f.Y(V3)-i*spec_3.Y(V3);
    t4=spec_f.Y(V4)-i*spec_3.Y(V4);

    x=[spec_f.X(V1) spec_f.X(V2) spec_f.X(V3) spec_f.X(V4)];
    y=[t1 t2 t3 t4];

    c=corrcoef(x,y);
    r=c(1,2)^2;

    if (r>rmax)
        fact_V=i;
        rmax=r;
    end
end
spec_g.X=spec_f.X;
spec_g.Y=spec_f.Y-fact_V*spec_3.Y;
fact_V
end

function
areabast (spec_1,spec_2,wavelength_3,wavelength_4,wavelength_5,wavelength_6,wavelength_7,wavele
ngth_8)%wavelength_1,wavelength_2

turn_2=wavelength_6;
turn_1=wavelength_7;
alpha_1=wavelength_5;
beta_2=wavelength_3;
beta_1=wavelength_4;
beta_3=wavelength_8;

spec.X=[spec_2.X(wavelength_8:wavelength_3)'];
spec.Y=[spec_1(wavelength_8:wavelength_3)'];

%Base ligne

%BL=mean(max(spec_1(2382:2389),max(spec_1(2453:2485))));
poly_x=[spec.X(wavelength_3-wavelength_8+1) spec.X(wavelength_8-
wavelength_8+1)];%[spec.X(wavelength_8-wavelength_8+1) spec_1.X(wavelength_3-wavelength_8+1)]
poly_y=[spec.Y(wavelength_3-wavelength_8+1) spec.Y(wavelength_8-
wavelength_8+1)];%[spec.Y(wavelength_8-wavelength_8+1) spec_1.Y(wavelength_3-wavelength_8+1)]
p=polyfit(poly_x,poly_y,1);
BL=spec.X*p(1)+p(2);

```

Annexe 2 : Code MATLAB

```
%if 1.5*max(max(spec_1(2385:2389),max(spec_1(2453:2479)))) < max(spec_1(2422:2441))
%   BLa=max(spec_1(2422:2441));
%   else
%       BLa=BL;
%end

%subtract
spec_f.X=spec.X;
spec_f.Y=(spec.Y-BL)*(-1);
spec_f_a.Y=(spec.Y-BLa)*(-1);
%figure
%plot(spec_f.X,spec_f.Y)

%area_curve
ahelice=trapz(spec_f.X(turn_2-beta_3+1:alpha_1-beta_3+1),spec_f.Y(turn_2-beta_3+1:alpha_1-
beta_3+1));
tot=trapz(spec_f.X,spec_f.Y)-ahelice;
turn=trapz(spec_f.X(turn_1-beta_3+1:turn_2-beta_3+1),spec_f.Y(turn_1-beta_3+1:turn_2-
beta_3+1));
%if BLa>BL
%   ahelice=trapz(spec_f.X(turn_2-beta_3+1:alpha_1-beta_3+1),spec_f_a.Y(turn_2-
beta_3+1:beta_1-beta_3+1));
%   tot=tot+ahelice;
%else
%   ahelice=trapz(spec_f.X(turn_2-beta_3+1:alpha_1-beta_3+1),spec_f.Y(turn_2-
beta_3+1:alpha_1-beta_3+1));
%   tot=tot+ahelice;
%end
bsheet=trapz(spec_f.X(beta_1-beta_3+1:beta_2-beta_3+1),spec_f.Y(beta_1-beta_3+1:beta_2-
beta_3+1));

bsheet_2=trapz(spec_f.X(1:turn_1-beta_3+1),spec_f.Y(1:turn_1-beta_3+1));

figure
hold on
plot(spec_f.X(turn_1-beta_3+1:turn_2-beta_3+1),spec_f.Y(turn_1-beta_3+1:turn_2-
beta_3+1),'Color','c')
%figure
%if BLa>BL
%   plot(spec_2.X(turn_2-beta_3+1:beta_1-beta_3+1),spec_f.Y(turn_2-beta_3+1:beta_1-
beta_3+1),'Color','r')
%else
%   plot(spec_f.X(turn_2-beta_3+1:alpha_1-beta_3+1),spec_f.Y(turn_2-beta_3+1:alpha_1-
beta_3+1),'Color','r')
%end
plot(spec_f.X(alpha_1-beta_3+1:beta_1-beta_3+1),spec_f.Y(alpha_1-beta_3+1:beta_1-
beta_3+1),'Color','b')
plot(spec_f.X(beta_1-beta_3+1:beta_2-beta_3+1),spec_f.Y(beta_1-beta_3+1:beta_2-
beta_3+1),'Color','g')
plot(spec_f.X(1:turn_1-beta_3+1),spec_f.Y(1:turn_1-beta_3+1),'Color','g')
plot(spec_f.X(1:beta_2-beta_3+1),0,'Color','black')
% text(1648,-0.00007,'\mid alpha_1','FontWeight','bold')
% text(1665,0,'\mid turn_2','FontWeight','bold')
% text(1620,0,'\mid beta_2','FontWeight','bold')
% text(1691,0,'\mid turn_1','FontWeight','bold')
% text(1642,0.00003,'\mid beta_1','FontWeight','bold')
% text(1698,0,'\mid beta_3','FontWeight','bold')
axis([1612 1710 -0.0002 0.0010])

frac_turn=turn/tot*100
frac_ahelice=ahelice/tot*100
frac_bsheet=bsheet/tot*100;
frac_bsheet_2=bsheet_2/tot*100;
frac_bsheet_tot=frac_bsheet+frac_bsheet_2
t100=frac_turn+frac_ahelice+frac_bsheet_tot;

end
```

Script « integrate_fsd »

Annexe 2 : Code MATLAB

```

function integrate_fsd(spec_init,L1,L2,f,g,h)
close all

spec_1=tgspcread(f);
spec_2=tgspcread(g);
spec_3=tgspcread(h);

f.X=[spec_init.X(L1) spec_init.X(L2)];
f.Y=[spec_init.Y(L1) spec_init.Y(L2)];
p=polyfit(f.X,f.Y,1);
spec.X=[spec_init.X(L1-3:L2)];
spec.Y=[spec_init.Y(L1-3:L2)];

%Base ligne
BL.X=spec.X;
BL.Y=spec.X*p(1)+p(2);

spectre_fsd.X=spec.X;
spectre_fsd.Y=spec.Y-BL.Y;

%%%%%%%%%%%%%%%%%%%%%%%%%%%%%%%%%%%%%%%%%%%%%%%%%%%%%%%%%%%%%%%%%%%%%%%%
%%%%%%%%%%%%%%%%%%%%%%%%%%%%%%%%%%%%%%%%%%%%%%%%%%%%%%%%%%%%%%%%%%%%%%%%
W1=2203;
W2=2277;
W3=2358;
V1=2317;
V2=2312;
V3=2311;
V4=2305;

spec_l=substract_Water(spec_1, spec_2,W1,W2,W3);
spec_m=substract_Vapor(spec_1, spec_3,V1,V2,V3,V4);
spec_n.Y=smooth(spec_m.Y,9,'sgolay',3);
spec_n.Y=spec_n.Y(2375:2485);
spec_n.X=spec_m.X(2375:2485);
Spectre.X=spec_n.X;
Spectre.Y=spec_n.Y;

N = 3;
F = 5;
[b,g] = sgolay(N,F);
dx = 1;
HalfWin = ((F+1)/2) -1;
for n = (F+1)/2:108-(F+1)/2,
    SG2(n) = 2*dot(g(:,3)', spec_n.Y(n - HalfWin: n + HalfWin));
end

SG2 = SG2/(dx*dx);
HalfWin = ((F+1)/2) -1;
for n = (F+1)/2:105-(F+1)/2,
    SG4(n) = 2*dot(g(:,3)', SG2(n - HalfWin: n + HalfWin));
end

SG4 = SG4/(dx*dx);

[pks,locs_2nd_4]=findpeaks(SG4);
%figure;
%hold on
%plot(spec_n.X(1:102),SG4);
%title('2nd_4')

%%%%%%%%%%%%%%%%%%%%%%%%%%%%%%%%%%%%%%%%%%%%%%%%%%%%%%%%%%%%%%%%%%%%%%%%
%%%%%%%%%%%%%%%%%%%%%%%%%%%%%%%%%%%%%%%%%%%%%%%%%%%%%%%%%%%%%%%%%%%%%%%%

N = 3; % Order of polynomial fit
F = 5; % Window length
[b,g] = sgolay(N,F); % Calculate S-G coefficients

dx = 1;
Rng=(L2)-(L1-3);
HalfWin = ((F+1)/2) -1;
for n = (F+1)/2:Rng-(F+1)/2,
    % 2nd differential
    SG2(n) = 2*dot(g(:,3)', spectre_fsd.Y(n - HalfWin: n + HalfWin));
end

SG2 = SG2/(dx*dx); % and into 2nd derivative

```

Annexe 2 : Code MATLAB

```
%figure;
%hold on
%plot(spectre_fsd.X(1:Rng-3),SG2(1:Rng-3));
%title('2nd derivative spectrum');
%hold off

%%%%%%%%%%%%%%%%%%%%%%%%%%%%%%%%%%%%%%%%%%%%%%%%%%%%%%%%%%%%%%%%%%%%%%%%
%4th derivative
%%%%%%%%%%%%%%%%%%%%%%%%%%%%%%%%%%%%%%%%%%%%%%%%%%%%%%%%%%%%%%%%%%%%%%%%

HalfWin = ((F+1)/2) -1;
for n = (F+1)/2:Rng-2-(F+1)/2,
    % 2nd differential
    SG4_2(n) = 2*dot(g(:,3)', SG2(n - HalfWin: n + HalfWin)');

end

SG4_2 = SG4_2/(dx*dx);
[pks,locs]=findpeaks(SG4_2);
%figure;
%spectre_fsd.X(1:Rng-5);
%plot(spectre_fsd.X(1:Rng-5),SG4_2(1:Rng-5));

N=size(locs);
N(2)
M=size(locs_2nd_4);
M(2)
g=[1:13];
b=[1:13];
for i=1:13
    if i<=N(2)
        Var_1=10;
        for j=1:M(2)
            if abs(locs(i)-locs_2nd_4(j))<Var_1
                Var_1=abs(locs(i)-locs_2nd_4(j));
                b(i)=spectre_fsd.X(locs_2nd_4(j));
            end
        end
    else
        b(i)=0;
    end
end
b

cf(spectre_fsd.X,spectre_fsd.Y,b(1),b(2),b(3),b(4),b(5),b(6),b(7),b(8),b(9),b(10),b(11),b(12),
b(13))
end

function cf(x,y,b1,b2,b3,b4,b5,b6,b7,b8,b9,b10,b11,b12,b13)
figure;
% Set up figure to receive data sets and fits
f_ = clf;
figure(f_);
set(f_,'Units','Pixels','Position',[473 113 688 485]);
% Line handles and text for the legend.
legh_ = [];
legt_ = {};
% Limits of the x-axis.
xlim_ = [Inf -Inf];
% Axes for the plot.
ax_ = axes;
set(ax_,'Units','normalized','OuterPosition',[0 0 1 1]);
set(ax_,'Box','on');
axes(ax_);
hold on;

% --- Plot data that was originally in data set "y vs. x"
x = x(:);
y = y(:);
h_ = line(x,y,'Parent',ax_,'Color',[0.333333 0 0.666667],...
'LineStyle','none','LineWidth',1,...
'Marker','.', 'MarkerSize',12);
xlim_(1) = min(xlim_(1),min(x));
xlim_(2) = max(xlim_(2),max(x));
legh_(end+1) = h_;
```


Annexe 2 : Code MATLAB

```

legt_{end+1} = 'y vs. x';

% Nudge axis limits beyond data limits
if all(isfinite(xlim_))
    xlim_ = xlim_ + [-1 1] * 0.01 * diff(xlim_);
    set(ax_, 'XLim',xlim_)
else
    set(ax_, 'XLim',[1606.4575357314575, 1702.8438336291997]);
end

% --- Create fit "fit 1"
fo_ = fitoptions('method','NonlinearLeastSquares','Upper',[Inf Inf 20 Inf Inf 20 Inf Inf 20
Inf Inf 20 Inf Inf 20 Inf Inf 20 Inf Inf 20 Inf Inf 20 Inf Inf 20 Inf Inf 20 Inf
Inf 20 Inf Inf 20],'Lower',[0 0 0 0 0 0 0 0 0 0 0 0 0 0 0 0 0 0 0 0 0 0 0 0 0 0
0 0 0 0 0 0 0]);
ok_ = isfinite(x) & isfinite(y);
if ~all( ok_ )
    warning( 'GenerateMFile:IgnoringNansAndInfs',...
            'Ignoring NaNs and Infs in data.' );
end

st_ = [0.5 b1 2 0.05 b2 2 0.5 b3 2 0.5 b4 2 0.5 b5 2 0.5 b6 2 0.5 b7 2 0.5 b8 2 0.045 b9 2
0.039 b10 2 0.5 b11 2.5 0.5 b12 2.5 0.5 b13 2.5];
set(fo_, 'Startpoint',st_);

if b8<1600
    st_ = [0.5 b1 2 0.05 b2 2 0.5 b3 2 0.5 b4 2 0.5 b5 2 0.5 b6 2 0.5 b7 2];
    set(fo_, 'Startpoint',st_);
    ft_ = fittype('gauss7');
    NG=7;
elseif b9<1600 && b8>0
    st_ = [0.5 b1 2 0.05 b2 2 0.5 b3 2 0.5 b4 2 0.5 b5 2 0.5 b6 2 0.5 b7 2 0.5 b8 2];
    set(fo_, 'Startpoint',st_);
    ft_ = fittype('gauss8');
    NG=8;
elseif b10<1600 && b9>0
    st_ = [0.5 b1 2 0.05 b2 2 0.5 b3 2 0.5 b4 2 0.5 b5 2 0.5 b6 2 0.5 b7 2 0.5 b8 2 0.045 b9
2];
    set(fo_, 'Startpoint',st_);
    ft_ = fittype('a1*exp(-(x-b1)/c1)^2)+a2*exp(-(x-b2)/c2)^2+a3*exp(-(x-
b3)/c3)^2+a4*exp(-(x-b4)/c4)^2+a5*exp(-(x-b5)/c5)^2+a6*exp(-(x-b6)/c6)^2+a7*exp(-(x-
b7)/c7)^2+a8*exp(-(x-b8)/c8)^2+a9*exp(-(x-b9)/c9)^2',...
    'dependent',{'y'}, 'independent',{'x'},...
    'coefficients',{'a1', 'b1', 'c1', 'a2', 'b2', 'c2', 'a3', 'b3', 'c3', 'a4', 'b4', 'c4',
'a5', 'b5', 'c5', 'a6', 'b6', 'c6', 'a7', 'b7', 'c7', 'a8', 'b8', 'c8', 'a9', 'b9', 'c9'});
    NG=9;
elseif b11<1600 && b10>0
    st_ = [0.5 b1 2 0.05 b2 2 0.5 b3 2 0.5 b4 2 0.5 b5 2 0.5 b6 2 0.5 b7 2 0.5 b8 2 0.045 b9 2
0.039 b10 2];
    set(fo_, 'Startpoint',st_);
    ft_ = fittype('a1*exp(-(x-b1)/c1)^2)+a2*exp(-(x-b2)/c2)^2+a3*exp(-(x-
b3)/c3)^2+a4*exp(-(x-b4)/c4)^2+a5*exp(-(x-b5)/c5)^2+a6*exp(-(x-b6)/c6)^2+a7*exp(-(x-
b7)/c7)^2+a8*exp(-(x-b8)/c8)^2+a9*exp(-(x-b9)/c9)^2+a10*exp(-(x-b10)/c10)^2',...
    'dependent',{'y'}, 'independent',{'x'},...
    'coefficients',{'a1', 'b1', 'c1', 'a2', 'b2', 'c2', 'a3', 'b3', 'c3', 'a4', 'b4', 'c4',
'a5', 'b5', 'c5', 'a6', 'b6', 'c6', 'a7', 'b7', 'c7', 'a8', 'b8', 'c8', 'a9', 'b9', 'c9',
'a10', 'b10', 'c10'});
    NG=10;
elseif b12<1600 && b11>0
    st_ = [0.5 b1 2 0.05 b2 2 0.5 b3 2 0.5 b4 2 0.5 b5 2 0.5 b6 2 0.5 b7 2 0.5 b8 2 0.045 b9 2
0.039 b10 2 0.05 b11 3.4];
    set(fo_, 'Startpoint',st_);
    ft_ = fittype('a1*exp(-(x-b1)/c1)^2)+a2*exp(-(x-b2)/c2)^2+a3*exp(-(x-
b3)/c3)^2+a4*exp(-(x-b4)/c4)^2+a5*exp(-(x-b5)/c5)^2+a6*exp(-(x-b6)/c6)^2+a7*exp(-(x-
b7)/c7)^2+a8*exp(-(x-b8)/c8)^2+a9*exp(-(x-b9)/c9)^2+a10*exp(-(x-b10)/c10)^2+a11*exp(-
((x-b11)/c11)^2)',...
    'dependent',{'y'}, 'independent',{'x'},...
    'coefficients',{'a1', 'b1', 'c1', 'a2', 'b2', 'c2', 'a3', 'b3', 'c3', 'a4', 'b4', 'c4',
'a5', 'b5', 'c5', 'a6', 'b6', 'c6', 'a7', 'b7', 'c7', 'a8', 'b8', 'c8', 'a9', 'b9', 'c9',
'a10', 'b10', 'c10', 'a11', 'b11', 'c11'});
    NG=11;
elseif b13<1600 && b12>0
    st_ = [0.5 b1 2 0.05 b2 2 0.5 b3 2 0.5 b4 2 0.5 b5 2 0.5 b6 2 0.5 b7 2 0.5 b8 2 0.045 b9 2
0.039 b10 2 0.5 b11 2 0.5 b12 2];
    set(fo_, 'Startpoint',st_);
    ft_ = fittype('a1*exp(-(x-b1)/c1)^2)+a2*exp(-(x-b2)/c2)^2+a3*exp(-(x-
b3)/c3)^2+a4*exp(-(x-b4)/c4)^2+a5*exp(-(x-b5)/c5)^2+a6*exp(-(x-b6)/c6)^2+a7*exp(-(x-

```

Annexe 2 : Code MATLAB

```

b7)/c7)^2)+a8*exp(-((x-b8)/c8)^2)+a9*exp(-((x-b9)/c9)^2)+a10*exp(-((x-b10)/c10)^2)+a11*exp(-
((x-b11)/c11)^2)+a12*exp(-((x-b12)/c12)^2)',...
    'dependent',{ 'y'}, 'independent',{ 'x'},...
    'coefficients',{ 'a1', 'b1', 'c1', 'a2', 'b2', 'c2', 'a3', 'b3', 'c3', 'a4', 'b4', 'c4',
'a5', 'b5', 'c5', 'a6', 'b6', 'c6', 'a7', 'b7', 'c7', 'a8', 'b8', 'c8', 'a9', 'b9', 'c9',
'a10', 'b10', 'c10', 'a11', 'b11', 'c11', 'a12', 'b12', 'c12'});
    NG=12;
elseif b13>0
    st_ = [0.5 b1 2 0.05 b2 2 0.5 b3 2 0.5 b4 2 0.5 b5 2 0.5 b6 2 0.5 b7 2 0.5 b8 2 0.045 b9 2
0.039 b10 2 0.034 b11 2 0.05 b12 2 0.05 b13 2];
    set(fo_, 'Startpoint', st_);
    ft_ = fitttype('a1*exp(-((x-b1)/c1)^2)+a2*exp(-((x-b2)/c2)^2)+a3*exp(-((x-
b3)/c3)^2)+a4*exp(-((x-b4)/c4)^2)+a5*exp(-((x-b5)/c5)^2)+a6*exp(-((x-b6)/c6)^2)+a7*exp(-((x-
b7)/c7)^2)+a8*exp(-((x-b8)/c8)^2)+a9*exp(-((x-b9)/c9)^2)+a10*exp(-((x-b10)/c10)^2)+a11*exp(-
((x-b11)/c11)^2)+a12*exp(-((x-b12)/c12)^2)+a13*exp(-((x-b13)/c13)^2)',...
    'dependent',{ 'y'}, 'independent',{ 'x'},...
    'coefficients',{ 'a1', 'b1', 'c1', 'a2', 'b2', 'c2', 'a3', 'b3', 'c3', 'a4', 'b4', 'c4',
'a5', 'b5', 'c5', 'a6', 'b6', 'c6', 'a7', 'b7', 'c7', 'a8', 'b8', 'c8', 'a9', 'b9', 'c9',
'a10', 'b10', 'c10', 'a11', 'b11', 'c11', 'a12', 'b12', 'c12', 'a13', 'b13', 'c13'});
    NG=13;
end

% Fit this model using new data
[cf_] = fit(x(ok_),y(ok_),ft_,fo_);

% Plot this fit
h_ = plot(cf_,'fit',0.95);
set(h_(1),'Color',[1 0 0],...
    'LineStyle','-','LineWidth',2,...
    'Marker','none','MarkerSize',6);
% Turn off legend created by plot method.
legend off;
% Store line handle and fit name for legend.
legh_(end+1) = h_(1);
legt_{end+1} = 'fit 1';

% --- Finished fitting and plotting data. Clean up.
hold off;
% Display legend
leginfo_ = {'Orientation','vertical','Location','NorthEast'};
h_ = legend(ax_,legh_,legt_,leginfo_{:});
set(h_,'Interpreter','none');
% Remove labels from x- and y-axes.
xlabel(ax_,'');
ylabel(ax_,'');

area_fit(cf_,NG)

end

function area_fit(model,number_of_gaussian)

    coef=coeffvalues(model);
    i=1;
    area_tot=0;
    area_alpha=0;
    area_beta=0;
    area_turn=0;
    hold on
    for h=1:number_of_gaussian
        i=(h-1)*3+1;
        f=@(x)gaussian(x,coef(i),coef(i+1),coef(i+2));
        g=@(x)gaussian_2(x,coef(i),coef(i+1),coef(i+2));
        area_tot=area_tot+quad(f,-coef(i+2)*3,coef(i+2)*3);
        if or(coef(i+1)>1620 && coef(i+1)<=1646,coef(i+1)>1689)
            area_beta=area_beta+quad(f,-coef(i+2)*3,coef(i+2)*3);
            fplot(g,[1600 1700],'-c');
        elseif coef(i+1)>=1651 && coef(i+1)<1665
            area_alpha=area_alpha+quad(f,-coef(i+2)*3,coef(i+2)*3);
            fplot(g,[1600 1700],'-r');
        elseif coef(i+1)>1665 && coef(i+1)<1689
            area_turn=area_turn+quad(f,-coef(i+2)*3,coef(i+2)*3);
            fplot(g,[1600 1700],'-y');
        end
    end
    hold off
    area_alpha=area_alpha/area_tot*100

```

Annexe 2 : Code MATLAB

```
area_beta=area_beta/area_tot*100
area_turn=area_turn/area_tot*100

end

function y=gaussian(x,a,b,c)

    y=a.*exp(-(x/c).^2);

end

function z=gaussian_2(x,a,b,c)

    z=a.*exp(-((x-b)/c).^2);

end

function [spec_f]=substract_Water(spec_1, spec_2, W1, W2, W3)% , W4, W5)
    fact_W=0;
    rmax=0;

    %%%%%%%%%%%%%%%%%%%%%%%%%%%%%%%%%%%%%%%%%%%%%%%%%%%%%%%%%%%%%
    %boucle "for" dont on fait varier le facteur de soustraction%
    %du spectre de la protéine par le spectre de l'eau%%%%%%%%%%%%%%%%%%%%%%%%%%%%%%%%
    %%%%%%%%%%%%%%%%%%%%%%%%%%%%%%%%%%%%%%%%%%%%%%%%%%%%%%%%%%%%%

    for i=0.5:0.0001:1.0
        t1=spec_1.Y(W1)-i*spec_2.Y(W1);
        t2=spec_1.Y(W2)-i*spec_2.Y(W2);
        t3=spec_1.Y(W3)-i*spec_2.Y(W3);

        x=[spec_1.X(W1) spec_1.X(W2) spec_1.X(W3)];
        y=[t1 t2 t3];

        c=corrcoef(x,y);
        r=c(1,2)^2;

        %%%%%%%%%%%%%%%%%%%%%%%%%%%%%%%%%%%%%%%%%%%%%%%%%%%%%%%%%%%%%
        %lorsque le coefficient de correlation est le plus proche de 1,%
        %la zone où l'eau liquide absorbe a été soustraite au maximum%%
        %%%%%%%%%%%%%%%%%%%%%%%%%%%%%%%%%%%%%%%%%%%%%%%%%%%%%%%%%%%%%

        if (r>rmax)
            fact_W=i;
            rmax=r;
        end
    end
    spec_f.X=spec_1.X;
    spec_f.Y=spec_1.Y-fact_W*spec_2.Y;

    %%%%%%%%%%%%%%%%%%%%%%%%%%%%%%%%%%%%%%%%%%%%%%%%%%%%%%%%%%%%%
    %une fois le facteur de soustraction déterminé, la totalité du spectre est soustrait%
    %%%%%%%%%%%%%%%%%%%%%%%%%%%%%%%%%%%%%%%%%%%%%%%%%%%%%%%%%%%%%

    fact_W;

end

function [spec_g]=substract_Vapor(spec_f, spec_3, V1, V2, V3, V4)
    fact_V=0;
    rmax=0;
    for i=-0.3:0.0001:0.3
        t1=spec_f.Y(V1)-i*spec_3.Y(V1);
        t2=spec_f.Y(V2)-i*spec_3.Y(V2);
        t3=spec_f.Y(V3)-i*spec_3.Y(V3);
        t4=spec_f.Y(V4)-i*spec_3.Y(V4);

        x=[spec_f.X(V1) spec_f.X(V2) spec_f.X(V3) spec_f.X(V4)];
        y=[t1 t2 t3 t4];

        c=corrcoef(x,y);
        r=c(1,2)^2;

        if (r>rmax)
            fact_V=i;
            rmax=r;
        end
    end
end
```

Annexe 2 : Code MATLAB

```
spec_g.X=spec_f.X;
spec_g.Y=spec_f.Y-fact_V*spec_3.Y;
fact_V;
end

function
areabast(spec_1,wavelength_3,wavelength_4,wavelength_5,wavelength_6,wavelength_7,wavelength_8)
%wavelength_1,wavelength_2

turn_2=wavelength_6;
turn_1=wavelength_7;
alpha_1=wavelength_5;
beta_2=wavelength_3;
beta_1=wavelength_4;
beta_3=wavelength_8;

spec.X=[wavelength_8:wavelength_3]';
spec.Y=[spec_1(wavelength_8:wavelength_3)]';

%figure
%plot(spec.X,spec.Y)

%Base ligne
BL=mean(max(spec_1(2385:2389),max(spec_1(2453:2479))));
if 1.5*max(max(spec_1(2385:2389),max(spec_1(2453:2479)))) < max(spec_1(2422:2441))
    BLa=max(spec_1(2422:2441));
    else
        BLa=BL;
end

%subtract
spec_f.X=spec.X;
spec_f.Y=(spec.Y-BL)*(-1);
spec_f_a.Y=(spec.Y-BLa)*(-1);
%figure
%plot(spec_f.X,spec_f.Y)

%area_curve
ahelice=trapez(spec_f.X(turn_2-beta_3+1:alpha_1-beta_3+1),spec_f.Y(turn_2-beta_3+1:alpha_1-
beta_3+1));
tot=trapez(spec_f.X,spec_f.Y)-ahelice;
turn=trapez(spec_f.X(turn_1-beta_3+1:turn_2-beta_3+1),spec_f.Y(turn_1-beta_3+1:turn_2-
beta_3+1));
if BLa>BL
    ahelice=trapez(spec_f.X(turn_2-beta_3+1:beta_1-beta_3+1),spec_f_a.Y(turn_2-
beta_3+1:beta_1-beta_3+1));
    tot=tot+ahelice;
else
    ahelice=trapez(spec_f.X(turn_2-beta_3+1:alpha_1-beta_3+1),spec_f.Y(turn_2-
beta_3+1:alpha_1-beta_3+1));
    tot=tot+ahelice;
end
bsheet=trapez(spec_f.X(beta_1-beta_3+1:beta_2-beta_3+1),spec_f.Y(beta_1-beta_3+1:beta_2-
beta_3+1));

%
bsheet_2=trapez(spec_f.X(1:turn_1-beta_3+1),spec_f.Y(1:turn_1-beta_3+1));

figure
hold on
%plot(spec_f.X((lambda_1-lambda_1+1):(lambda_2-lambda_1+1)),spec_f.Y((lambda_1-
lambda_1+1):(lambda_2-lambda_1+1)))
%figure
plot(spec_f.X(turn_1-beta_3+1:turn_2-beta_3+1),spec_f.Y(turn_1-beta_3+1:turn_2-
beta_3+1),'Color','c')
%figure
if BLa>BL
    plot(spec_f.X(turn_2-beta_3+1:beta_1-beta_3+1),spec_f.Y(turn_2-beta_3+1:beta_1-
beta_3+1),'Color','r')
else
    plot(spec_f.X(turn_2-beta_3+1:alpha_1-beta_3+1),spec_f.Y(turn_2-beta_3+1:alpha_1-
beta_3+1),'Color','r')
end
```

Annexe 2 : Code MATLAB

```
plot(spec_f.X(beta_1-beta_3+1:beta_2-beta_3+1),spec_f.Y(beta_1-beta_3+1:beta_2-  
beta_3+1),'Color','g')  
plot(spec_f.X(1:turn_1-beta_3+1),spec_f.Y(1:turn_1-beta_3+1),'Color','g')  
  
frac_turn=turn/tot*100  
frac_ahelice=ahelice/tot*100  
frac_bsheet=bsheet/tot*100  
frac_bsheet_2=bsheet_2/tot*100  
frac_bsheet_tot=frac_bsheet+frac_bsheet_2  
t100=frac_turn+frac_ahelice+frac_bsheet_tot  
  
end
```

Annexe 3 : Explication du script MATLAB de la SOP

Légende :

Fonction / fin de fonction

Paramètres de la fonction

Expliqué dans un onglet suivant

Expliqué dans un onglet précédent

Plot (génération de figure dans MATLAB)

Variables importantes

-----Start-----
Code généré selon l'aide MATLAB
-----Stop-----

Fonction principale : Prot_Struct_sec()

```
function Prot_Struct_sec(f,g,h) f=nom du spectre de la protéine, g=eau, h=vapeur

close all Ferme toute les figures ouvertes dans MATLAB

w1=2203;
w2=2277;
w3=2358;

v1=2317;
v2=2312;
v3=2310;
v4=2305;

%%%%%%%%%%%%%%%%%%%%%%%%%%%%%%%%%%%%%%%%%%%%%%%%%%%%%%%%%%%%%%%%%%%%%%%%
%chargement des spectres de protéine, eau, vapeur d'eau%
%%%%%%%%%%%%%%%%%%%%%%%%%%%%%%%%%%%%%%%%%%%%%%%%%%%%%%%%%%%%%%%%%%%%%%%%
                                Génération des noms de spectre à charger
f1='.spc';                                mot « .spc »
f2='_sub';                                mot « _sub »
f3='.xls';                                mot « .xls »
f4=[f f1];                                mot « protéine.spc »
f5=[f f3];                                mot « protéine.xls »
f6=[f f2 f3];                            mot « protéine_sub.xls »
g1=[g f1];                                mot « eau.spc »
h1=[h f1];                                mot « vapeur.spc »

spec_1=tgspcread(f4);                    chargement du spectre de la protéine
spec_2=tgspcread(g1);                    chargement du spectre de l'eau
spec_3=tgspcread(h1);                    chargement du spectre de la vapeur

%xlswrite(f5,[spec_1.X,spec_1.Y]);        création d'un fichier excel contenant les valeurs du
                                Spectre de la protéine avant soustraction
spec_m=substract_Water(spec_1, spec_2,w1,w2,w3); fonction de soustraction de l'eau
spec_m=substract_Vapor(spec_1, spec_3,v1,v2,v3,v4); fonction de soustraction de la vapeur

%xlswrite(f6,[spec_m.X,spec_m.Y]);        création d'un fichier excel contenant les valeurs du
                                Spectre de la protéine après soustraction

%%%%%%%%%%%%%%%%%%%%%%%%%%%%%%%%%%%%%%%%%%%%%%%%%%%%%%%%%%%%%%%%%%%%%%%%
%contrôle de la soustraction%
%%%%%%%%%%%%%%%%%%%%%%%%%%%%%%%%%%%%%%%%%%%%%%%%%%%%%%%%%%%%%%%%%%%%%%%%
```

Annexe 3 : Explication du script MATLAB de la SOP

```
figure
hold on
plot(spec_l.X,spec_l.Y);
title('Subtract Water');
```

figure de contrôle de la soustraction de l'eau

```
figure;
hold on
plot(spec_m.X,spec_m.Y);
title('Subtract Vapor');
```

figure de contrôle de la soustraction de la vapeur

```
spec_n.Y=smooth(spec_m.Y,9,'sgolay',3);
```

smoothing de la dimension Y de la variable spec_m selon Savitzki Golay d'ordre 3 à 9 points

```
spec_n.X=spec_m.X;
```

génération de la dimension X de la variable spec_n

```
figure;
hold on
plot(spec_n.X,spec_n.Y);
title('Smoothed spectrum');
```

-----Start-----

```
%%%%%%%%%
%2nd derivative
%%%%%%%%%
```

2^{ème} dérivée de S-G selon MATLAB (c.f aide de 'sgolay' dans MATLAB)

```
N = 3;
F = 5;
[b,g] = sgolay(N,F);
```

ordre de la fonction S-G
nombre de points de S-G

```
dx = 1;
```

```
HalfWin = ((F+1)/2) -1;
for n = (F+1)/2:2997-(F+1)/2,
    % 2nd differential
    SG2(n) = 2*dot(g(:,3)', spec_n.Y(n - HalfWin: n + HalfWin));
end
```

```
SG2 = SG2/(dx*dx);
```

-----Stop-----

```
figure;
hold on
plot(spec_n.X(1:2994),SG2);
title('2nd derivative spectrum');
hold off;
```

affichage du spectre de la 2^{ème} dérivée de S-G de la protéine

-----Start-----

```
%%%%%%%%%%%%%%%%%%%%%%%%%%%%%%%%%%%%%%%%%
%4th derivative
%%%%%%%%%%%%%%%%%%%%%%%%%%%%%%%%%%%%%%%%%
```

4^{ème} dérivée de S-G selon MATLAB (c.f aide de 'sgolay' dans MATLAB)

```
HalfWin = ((F+1)/2) -1;
for n = (F+1)/2:2994-(F+1)/2,
    SG4(n) = 2*dot(g(:,3)', SG2(n - HalfWin: n + HalfWin));
end
```

```
SG4 = SG4/(dx*dx);
SG4_2.X=spec_n.X(2390:2500);
SG4_2.Y=SG4(2390:2500)';
```

-----Stop-----

```
figure;
hold on
plot(SG4_2.X,SG4_2.Y);
```

affichage de la 4^{ème} dérivée de S-G de la protéine

```
[pks,locs]=findpeaks(SG4_2.Y);
```

```
%%%%%%%%%%%%%%%%%%%%%%%%%%%%%%%%%%%%%%%%%
%paramètre d'integration
%%%%%%%%%%%%%%%%%%%%%%%%%%%%%%%%%%%%%%%%%
```

```
[r,WL3]=find(SG4==min(SG4(2435:2441)));
```

```
[r,WL1]=find(SG4==min(SG4(2465:2471)));
```

```
[r,WL2]=find(SG4==min(SG4(2442:2448)));
```

```
[r,WL4]=find(SG4==min(SG4(2419:2426)));
```


Annexe 3 : Explication du script MATLAB de la SOP

```
[r,WL5]=find(SG4==min(SG4(2392:2397)));  
[r,WL6]=find(SG4==min(SG4(2382:2390)));
```

```
areabast(SG2,spec_m,WL1,WL2,WL3,WL4,WL5,WL6)
```

fonction de calcul des aires

```
end
```

fonction de soustraction de l'eau : `subtract_Water()`

appel de fonction :

```
function Prot_Struct_sec(f,g,h)
```

```
...
```

```
W1=2203;  
W2=2277;  
W3=2358;
```

Paramètre arbitraire de la soustraction,
correspond aux lignes 2203, 2277 et 2358 des spectres
soit 2069, 1805 et 1727 cm^{-1}

```
...
```

```
spec_1=egspcread(f4);  
spec_2=egspcread(g1);
```

chargement du spectre de la protéine
chargement du spectre de l'eau

```
...
```

```
spec_1=subtract_Water(spec_1,spec_2,W1,W2,W3);
```

appel de la fonction

```
...
```

```
end
```

fonction

```
function [spec_f]=subtract_Water(spec_1,spec_2,W1,W2,W3)
```

```
fact_W=0;  
rmax=0;
```

facteur de soustraction initial
coefficient de corrélation initial

```
%%%%%%%%%%%%%%%%%%%%%%%%%%%%%%%%%%%%%%%%%%%%%%%%%%%%%%%%%%%%%%%%%%%%%%%%  
%boucle "for" dont on fait varier le facteur de soustraction%  
%du spectre de la protéine par le spectre de l'eau%%%%%%%%  
%%%%%%%%%%%%%%%%%%%%%%%%%%%%%%%%%%%%%%%%%%%%%%%%%%%%%%%%%%%%%%%%%%%%%%%%
```

```
for i=0.5:0.0001:1.5  
t1=spec_1.Y(W1)-i*spec_2.Y(W1);  
t2=spec_1.Y(W2)-i*spec_2.Y(W2);  
t3=spec_1.Y(W3)-i*spec_2.Y(W3);
```

boucle dont on fait varier la soustraction
de 0.5x à 1.5x

```
x=[spec_1.X(W1) spec_1.X(W2) spec_1.X(W3)];  
y=[t1 t2 t3];
```

```
c=corrcoef(x,y);  
r=c(1,2)^2;
```

calcul du coefficient de corrélation entre les
trois longueurs d'onde W1, W2 et W3

```
%%%%%%%%%%%%%%%%%%%%%%%%%%%%%%%%%%%%%%%%%%%%%%%%%%%%%%%%%%%%%%%%%%%%%%%%  
%lorsque le coefficient de corrélation est le plus proche de 1,%  
%la zone où l'eau liquide absorbe a été soustraite au maximum%%  
%%%%%%%%%%%%%%%%%%%%%%%%%%%%%%%%%%%%%%%%%%%%%%%%%%%%%%%%%%%%%%%%%%%%%%%%
```

```
if (r>rmax)  
fact_W=i;  
rmax=r;
```

si la soustraction donne un meilleur coefficient de corrélation
que précédemment, on le conserve

```
end
```

```
end
```

Annexe 3 : Explication du script MATLAB de la SOP

```
spec_f.X=spec_1.X;
spec_f.Y=spec_1.Y-fact_W*spec_2.Y;          soustraction de la totalité du spectre

%%%%%%%%%%%%%%%%%%%%%%%%%%%%%%%%%%%%%%%%%%%%%%%%%%%%%%%%%%%%%%%%%%%%%%%%
%une fois le facteur de soustraction déterminé, la totalité du spectre est soustrait%
%%%%%%%%%%%%%%%%%%%%%%%%%%%%%%%%%%%%%%%%%%%%%%%%%%%%%%%%%%%%%%%%%%%%%%%%

fact_W;                                     permet d'afficher le facteur de soustraction obtenu
end
```

fonction de soustraction de la vapeur : `subtract_Vapor()`

appel de fonction

```
function Prot_Struct_sec(f,g,h)
...
V1=2317;                                     Paramètre arbitraire de la soustraction,
V2=2312;                                     correspond aux lignes 2317, 2312, 2310 et 2305 des spectres
V3=2310;                                     soit
V4=2305;
...
spec_3=egsprecad(h1);                       chargement du spectre de la vapeur
...
spec_1=subtract_Water(spec_1, spec_2,W1,W2,W3);
spec_g=subtract_Vapor(spec_1, spec_3,V1,V2,V3,V4);  fonction de soustraction de l'eau
...
end
```

fonction

```
function [spec_g]=subtract_Vapor(spec_f, spec_3, V1, V2, V3, V4)
fact_V=0;                                     facteur de soustraction initial
rmax=0;                                       coefficient de corrélation initial

for i=-0.3:0.0001:0.3                         boucle dont on fait varier la soustraction
    t1=spec_f.Y(V1)-i*spec_3.Y(V1);           de -0.3x à 0.3x
    t2=spec_f.Y(V2)-i*spec_3.Y(V2);
    t3=spec_f.Y(V3)-i*spec_3.Y(V3);
    t4=spec_f.Y(V4)-i*spec_3.Y(V4);

    x=[spec_f.X(V1) spec_f.X(V2) spec_f.X(V3) spec_f.X(V4)];
    y=[t1 t2 t3 t4];

    c=corrcoef(x,y);                           calcul du coefficient de corrélation entre les
    r=c(1,2)^2;                               quatre longueurs d'onde V1, V2, V3 et V4

    if (r>rmax)
        fact_V=i;                             si la soustraction donne un meilleur coefficient de corrélation
        rmax=r;                               que précédemment, on le conserve
    end
end
spec_g.X=spec_f.X;
spec_g.Y=spec_f.Y-fact_V*spec_3.Y;           soustraction de la totalité du spectre
fact_V;                                     permet d'afficher le facteur de soustraction
end
```

Annexe 3 : Explication du script MATLAB de la SOP

fonction de calcul des aires : areabast()

appel de fonction

```
function Prot_Struct_sec(f,g,h)
...
spec_m=subtract_Vapor(spec_1, spec_3,V1,V2,V3,V4);
...
SG2 = SG2/(dx*dx);
...
[r,WL3]=find(SG4==min(SG4(2435:2441)));
[r,WL1]=find(SG4==min(SG4(2465:2471)));           recherche des intervalles d'intégration
[r,WL2]=find(SG4==min(SG4(2442:2448)));           du spectre final selon les minimums
[r,WL4]=find(SG4==min(SG4(2419:2426)));           de la 4ème dérivée
[r,WL5]=find(SG4==min(SG4(2392:2397)));
[r,WL6]=find(SG4==min(SG4(2382:2390)));

areabast(SG2,spec_m,WL1,WL2,WL3,WL4,WL5,WL6)      fonction de calcul des aires
end
```

fonction

```
function areabast(SG2,spec_m,WL1,WL2,WL3,WL4,WL5,WL6)
turn_2=WL4;
turn_1=WL5;                                     attribution des différentes valeurs d'intervalles
alpha_1=WL3;                                     c.f graph ci-après pour une attribution
beta_2=WL1;                                       visuelle sur un spectre réel
beta_1=WL2;
beta_3=WL6;

spec.X=[spec_m.X(WL6:WL1)'];                    génération d'un nouveau spectre de dimension
spec.Y=[SG2(WL6:WL1)'];                          limitée à l'essentiel

%Base ligne
poly_x=[spec.X(WL1-WL6+1) spec.X(WL6-WL6+1)];   création d'une fonction correspondant à
poly_y=[spec.Y(WL1-WL6+1) spec.Y(WL6-WL6+1)];   la ligne de base
p=polyfit(poly_x,poly_y,1);
BL=spec.X*p(1)+p(2);
BLa=BL;

%subtract
spec_f.X=spec.X;
spec_f.Y=(spec.Y-BL)*(-1);                       correction du spectre avec la ligne de base
spec_f_a.Y=(spec_f.Y-BLa)*(-1);

%area_curve
ahelice=trapez(spec_f.X(turn_2-beta_3+1:alpha_1-beta_3+1),spec_f.Y(turn_2-beta_3+1:alpha_1-
beta_3+1));
tot=trapez(spec_f.X,spec_f.Y)-ahelice;
turn=trapez(spec_f.X(turn_1-beta_3+1:turn_2-beta_3+1),spec_f.Y(turn_1-beta_3+1:turn_2-
beta_3+1));
ahelice=trapez(spec_f.X(turn_2-beta_3+1:alpha_1-beta_3+1),spec_f.Y(turn_2-
beta_3+1:alpha_1-beta_3+1));
tot=tot+ahelice;
%end
bsheet=trapez(spec_f.X(beta_1-beta_3+1:beta_2-beta_3+1),spec_f.Y(beta_1-beta_3+1:beta_2-
beta_3+1));
bsheet_2=trapez(spec_f.X(1:turn_1-beta_3+1),spec_f.Y(1:turn_1-beta_3+1));

Intégration utilisant 'trapez' entre les intervalles définie ci-dessus
```

Annexe 3 : Explication du script MATLAB de la SOP

```

figure
hold on
plot(spec_f.X(turn_1-beta_3+1:turn_2-beta_3+1),spec_f.Y(turn_1-beta_3+1:turn_2-
beta_3+1),'Color','c')
plot(spec_f.X(turn_2-beta_3+1:alpha_1-beta_3+1),spec_f.Y(turn_2-beta_3+1:alpha_1-
beta_3+1),'Color','r')
plot(spec_f.X(alpha_1-beta_3+1:beta_1-beta_3+1),spec_f.Y(alpha_1-beta_3+1:beta_1-
beta_3+1),'Color','b')
plot(spec_f.X(beta_1-beta_3+1:beta_2-beta_3+1),spec_f.Y(beta_1-beta_3+1:beta_2-
beta_3+1),'Color','g')
plot(spec_f.X(1:turn_1-beta_3+1),spec_f.Y(1:turn_1-beta_3+1),'Color','y')
plot(spec_f.X(1:beta_2-beta_3+1),0,'Color','black')

```

Plot d'affichage du spectre final avec
les différentes structure secondaires mise en évidence
c.f figure ci-dessous

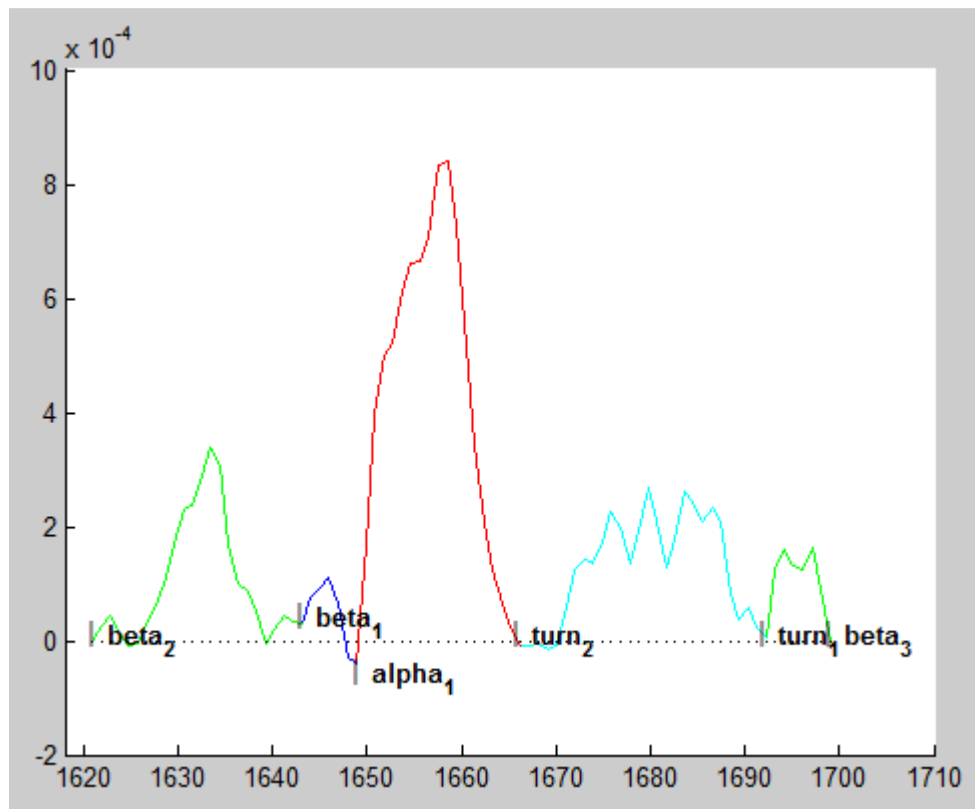
```

frac_turn=turn/tot*100
frac_ahelice=ahelice/tot*100
frac_bsheets=bsheet/tot*100;
frac_bsheets_2=bsheet_2/tot*100;
frac_bsheets_tot=frac_bsheets+frac_bsheets_2
t100=frac_turn+frac_ahelice+frac_bsheets_tot;

```

Calcul de l'aire sous la courbe des
différentes structure secondaire

end



Fonction Manual_Prot()

```
function Manual_Prot(f,g,h,wave1,wave2,wave3,wave4,wave5,wave6)
```

Fonctionne comme
Prot_Struct_Sec() en choisissant
Les paramètres d'intégration de
areabast()

```

WL1=round(-1.0371*wave1+4149);
WL2=round(-1.0371*wave2+4149);

```

Annexe 3 : Explication du script MATLAB de la SOP

```
WL3=round(-1.0371*wave3+4149);  
WL4=round(-1.0371*wave4+4149);  
WL5=round(-1.0371*wave5+4149);  
WL6=round(-1.0371*wave6+4149);
```

```
...
```

```
end
```