

Dopamine deficiency increases synchronized activity in the rat subthalamic nucleus

Alessandra Lintas^{a, b, c, *}, Isabella G. Silkis^d, Lavinia Albéri^a, Alessandro E.P. Villa^{b, e}

^aDept. of Medicine/Unit of Anatomy, University of Fribourg, Switzerland

^bNeuroheuristic Res. Group, Information Science Inst., Univ. of Lausanne, Switzerland

^cThe Schulich School of Medicine, University of Western Ontario, London, Canada

^dInstitute of Higher Nervous Activity and Neurophysiology, Russian Academy of Sciences, Moscow, Russia

^eINSERM U836, Grenoble Inst. of Neuroscience, Université Joseph Fourier, Eq7 Nanomédecine et Cerveau, Grenoble, France

Abnormal neuronal activity in the subthalamic nucleus (STN) plays a crucial role in the pathophysiology of Parkinson's disease (PD). In this study we investigated changes in rat STN neuronal activity after 28 days following the injection of 6-OHDA in the substantia nigra pars compacta (SNc). This drug provoked a lesion of SNc that induced a dopamine (DA) depletion assessed by changes in rotating capacity in response to apomorphine injection and by histological analysis. By means of extracellular recordings and waveshape spike sorting it was possible to analyze simultaneous spike trains and compute the crosscorrelations. Based on the analysis of the autocorrelograms we classified four types of firing patterns: regular (Poissonian-like), oscillatory (in the range 4–12 Hz), bursty and cells characterized by a long refractoriness. The distribution of unit types in the control (n=61) and lesioned (n=83) groups was similar, as well as the firing rate. In 6-OHDA treated rats we observed a significant increase (from 26% to 48%) in the number of pairs with synchronous firing. These data suggest that the synchronous activity of STN cells, provoked by loss of DA cells in SNc, is likely to be among the most significant dysfunctions in the basal ganglia of Parkinsonian patients. We raise the hypothesis that in normal conditions, DA maintains a balance between funneling information via the hyperdirect cortico-subthalamic pathway and parallel processing through the parallel cortico-basal ganglia-subthalamic pathways, both of which are necessary for selected motor behaviors.

1. Introduction

The subthalamic nucleus (STN) is a part of the cortico-basal ganglia-thalamocortical circuit and abnormal activity of STN plays a crucial role in the pathophysiology of Parkinson's disease

(PD) (DeLong and Wichmann, 2007), which is a progressive neurodegenerative disorder manifested by tremor, rigidity, akinesia and bradykinesia. Deep Brain Stimulation (DBS) of STN in Parkinsonian patients, which produces a reversible suppression of its activity, alleviates most of the neurological PD symptoms

* Corresponding author at: Dept. of Medicine/Unit of Anatomy, University of Fribourg, Switzerland. Fax: +41 263009732. E-mail address: alessandra.lintas@gmail.com (A. Lintas).

(Benabid et al., 1994; Limousin et al., 1998). Bilateral STN DBS improved behavioral performance in 6-OHDA lesioned rats (Li et al., 2010).

The STN receives topographically organized inputs from the cerebral cortex, and it provides the major glutamatergic excitation to the output nuclei of the basal ganglia (BG), which are the substantia nigra pars reticulata (SNr) (Villa and Lorenzana, 1997) and internal part of the globus pallidus (GPi) (entopeduncular nucleus in rodents, EPN) (Parent and Hazrati, 1995a,b). Since cortico-basal ganglia circuits are organized in parallel channels, sensory information flow from functionally distinct cortical areas remains segregated within the striatum and through its direct projections to BG output structures (Utter and Basso, 2008). Experimental data indicate that such segregation is only partly maintained in the STN (Kolomiets et al., 2001). However, the STN is in a strategic position to exert a prominent control over the BG-related motor functions since it integrates the somatic motor information from various cortical/subcortical brain areas (including the motor cortex, thalamus and pedunculopontine nucleus) (Takada et al., 1988). Fig. 1 illustrates the cortico-BG-thalamocortical circuit influenced by dopamine (DA) neurons of substantia nigra pars compacta (SNc).

Understanding the mechanism of dopamine (DA) influence on the neural circuit involving the BG and STN is important for understanding disturbances in motor behavior and the development of possible therapies for PD. The functional role of DA is complex due to the heterogeneity of neurons within the STN and BG nuclei, presence of dopaminergic

D1/D5 or D2/D3 receptors on diverse cell types and their terminals and opposite modulatory effects provoked by DA on different types of pre- and postsynaptic receptors (Sil'kis, 2005). Injection of DA or of D1 receptor agonists into the STN induced an increase in firing rate of the majority of STN neurons in both normal and 6-OHDA rats, but systemic administration of apomorphine (which is a non-selective DA agonist of both D1-like and D2-like receptors) provoked a decrease in the firing rate of STN neurons in rats with 6-OHDA lesions (Ni et al., 2001).

Investigation in rat and nonhuman primate models (Bergman et al., 1994; Breit et al., 2007; Tai et al., 2003; Vila et al., 2000) and human PD patients (Pogosyan et al., 2010) showed that the death of DA cells in the SNc may provoke changes of the firing rate and firing pattern of STN neurons and characteristic changes in motor behavior. However, due to the complex organization of BG and the variety of receptors it is difficult to determine the net effects produced by 6-OHDA or MPTP lesion of DA cells in SNc. This is particularly true given the wide range of anesthetics used in acute studies cited in the literature.

In this study, we investigated the changes in rodent STN neuronal activity using multielectrode recordings in the STN performed 28 days after 6-OHDA injection in the SNc. It is important to mention that we performed our recordings under Equithesin anesthesia. The choice of this drug is due to the fact that the other commonly used general anesthetics for rodents (mainly ketamine and urethane) have been reported to exert a strong influence upon the discharge pattern of

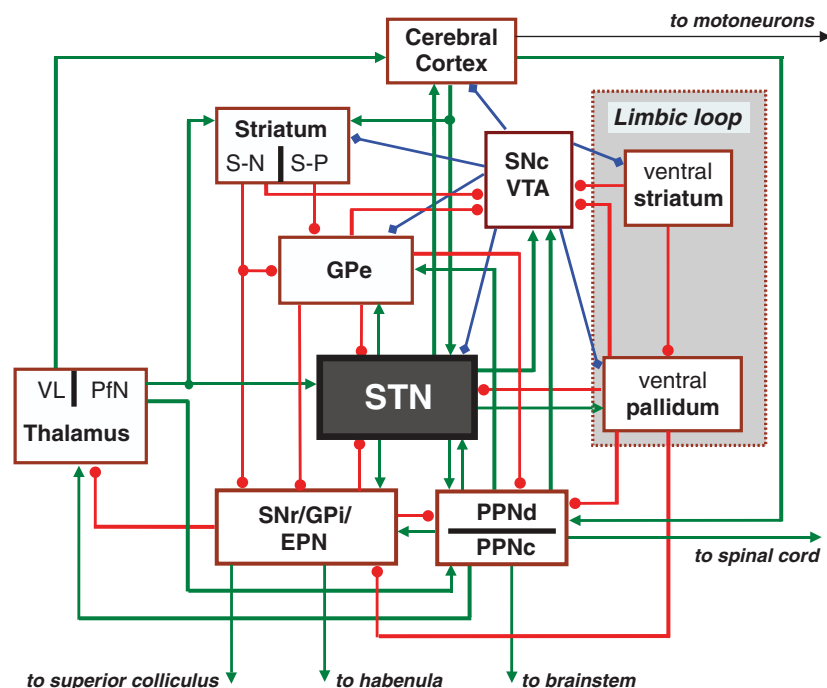


Fig. 1 – GPe and GPi, external and internal segment of the globus pallidus; D1 and D2, dopaminergic receptors; S-N and S-P, striatonigral and striatopallidal cells; SNr and SNc, substantia nigra pars reticulata and compacta; STN, subthalamic nucleus; Pfn, parafascicular thalamic nucleus, PPNd and PPNc, pars dissipate and compacta of pedunculopontine nucleus; VL, ventral lateral nucleus; VTA, ventral tegmental area. Connections ending with an arrow (green) correspond to excitatory (Glu) projections; those ending with a filled circle (red) correspond to inhibitory projections (GABAergic); those ending with a filled diamond (blue) indicate the modulatory influence exerted by DA projections of SNc/VTA.

extracellularly recorded units participating to the cortico-BG-thalamocortical circuit (Chetrit et al., 2009; Hutchison et al., 2004; Ruskin et al., 2003; Villa and Lorenzana, 1997).

We report that in our experimental condition the main effect of 6-OHDA lesion is a significant increase in the synchronous activity of STN cells, which we believe will provoke the main effect exerted by STN in PD models.

2. Results

2.1. Effect of 6-OHDA-induced dopamine cell lesion

Consistent rotational response to the systemic injection of apomorphine (0.5 mg/kg) was observed in 7 out of 8 treated rats after 21 days from 6-OHDA injection. All rats that were characterized by a positive rotational behavior showed also a complete loss of TH-immunoreactive neurons restricted to the substantia nigra ipsilateral to the injected hemisphere, as exemplified by the microphotographs in Fig. 2a.

2.2. Electrophysiological recordings

Extracellular single units were recorded in 15 rats anesthetized with Equithesin (7 lesioned and 8 control). We performed a total of 25 electrode tracks (13 tracks in the control group and 12 tracks in the treated group). A total of 144 single units ($n=61$ in the control group and $n=83$ in the treated group), localized in STN, were characterized by stable firing rate and a stable autocorrelogram, i.e. no significant difference between the beginning and the end of the recording session. An additional 94 single units were recorded in the same experiments, but either they did not match the above-mentioned criteria or their location was not in the STN after histological check. Fig. 2b illustrates an example of an electrolytic lesion in STN (recording performed in the left hemisphere) and a second lesion performed in the lateral dorsal thalamic nucleus for measurement of tissue retraction necessary for an accurate reconstruction of the recording sites.

2.2.1. Properties of individual neurons

The analysis of the autocorrelograms allowed us to define 4 types of firing patterns of the spontaneous activity of STN cells. Units characterized by a significant refractory period were termed “initial prolonged through” (IPT) cells (Fig. 3a). Units that showed a tendency to fire in bursts (“bursting cells”, BC) were characterized by a hump in the autocorrelogram near time zero (Fig. 3b). Units that presented an autocorrelogram with dampened periodic oscillatory activity were termed “oscillatory cells” (OSC) (Fig. 3c). Units with a flat autocorrelogram formed the “regular” (REG) type class (Fig. 3d).

In the control group type REG units were the most abundant (40%, $n=24$) followed by the IPT (23%), BC (21%) and OSC (16%) which were almost equally represented. In 6-OHDA lesioned rats the distribution of the four cell types (Table 1) was not statistically different from the controls (two sided Fischer’s exact test, not significant). However, we cannot rule out that lack of statistical significance is due to the limited size of our samples; there may have been a trend for a decrease in the relative proportion of REG cells and an

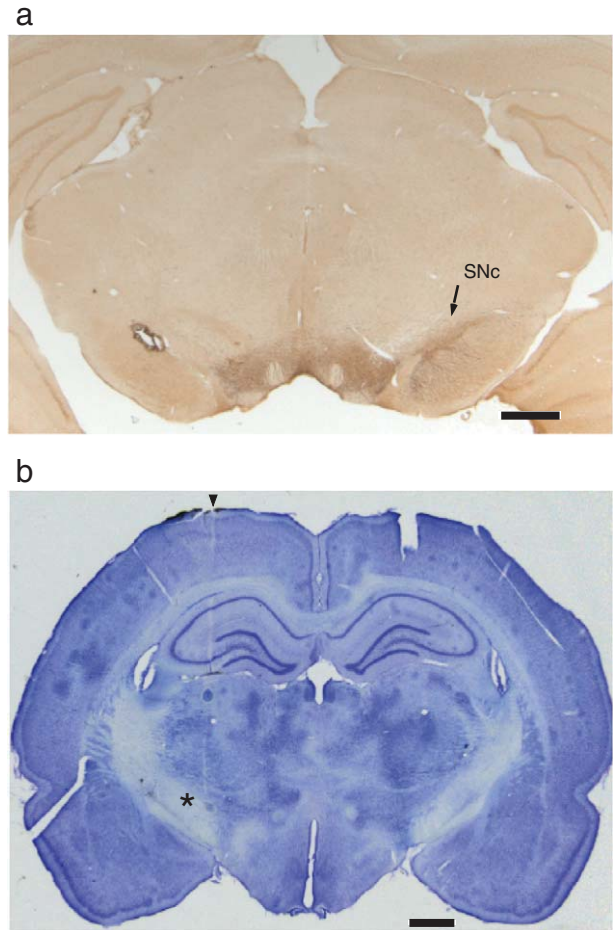


Fig. 2 – 6-OHDA lesion and reconstruction of the electrode track. Scale bars: 1 mm. (a) Coronal section stained for tyrosine hydroxylase (TH) showing the substantia nigra pars compacta (SNc) at interaural stereotaxic coordinate approximately equal to Ia=2.9 Paxinos and Watson, 1986. Note the lack of TH staining in the SNc of the lesioned hemisphere (left) compared to the non-lesioned hemisphere (right). (b) Coronal section, stained with cresyl violet, of the subthalamic nucleus of a control rat in the left hemisphere illustrating the microelectrode penetration at interaural stereotaxic coordinate approximately equal to Ia=5.6. The entrance of the electrode is indicated by arrow and an asterisk is placed to the left of the site of the electrolytic lesion made at the end of the session. A second lesion is visible dorsally in the lateral dorsal thalamic nucleus.

increase of IPT and BC cells. The firing rate of IPT and OSC was significantly higher than that of BC and REG types, for both groups of rats (Mann-Whitney’s U-test; $U=609$, $z=2.07$, $p<0.05$ for the controls and $U=992.5$, $z=3.02$, $p<0.01$ for the lesioned). However, the DA depletion did not alter the firing rate of either cell type (Mann-Whitney’s U-test, $p>0.05$ for either cell type).

2.2.2. Interaction between pairs of cells

We could record overall 100 pairs of cells located in the STN, 42 in normal and 58 in 6-OHDA treated rats. All cell pairs

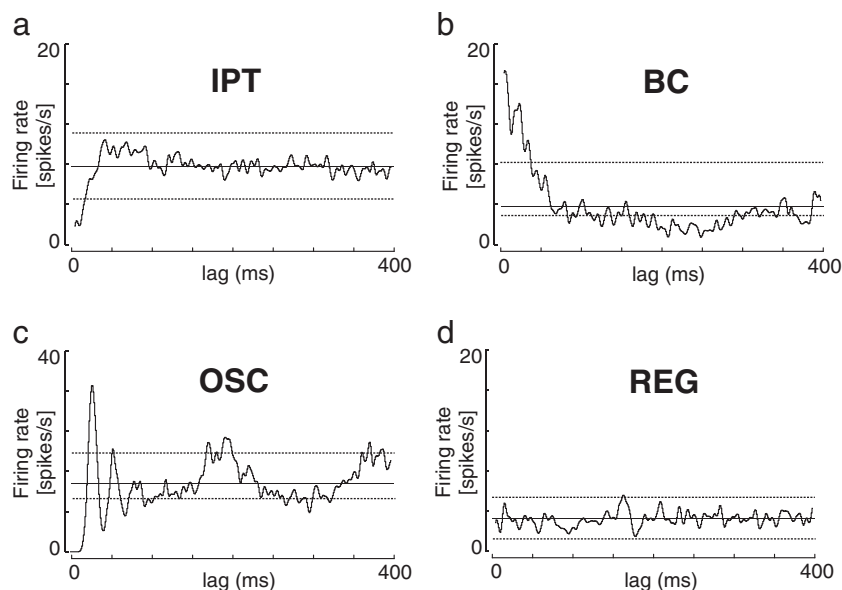


Fig. 3 – Example of the four specific types of spontaneous firing pattern observed in STN. Autocorrelograms (auto renewal density histograms) with lag (ms) on the abscissa and rate (spike/s) on the ordinate. Abscissa is scaled to 400 ms for all plots. The histograms are smoothed by Gaussian shaped bin of 5 ms calculated according to Abeles (1982). The dashed lines correspond to 99% confidence limits. (a) Initial prolonged through cell (IPT), firing at 5.9 spikes/s; (b) bursting cell (BC), firing at 1.9 spikes/s; (c) oscillatory cell (OSC) with a period of 62 ms, firing at 7.0 spikes/s. (d) Regular cell (REG), firing at 1.7 spikes/s.

were simultaneously recorded from the same electrode tip. The interaction types were classified according to the shape of the cross-correlogram densities (CRD) calculated according to Abeles (1982). The independence of firing of a pair of units corresponded to a flat cross-correlogram with statistical fluctuations within the limits of significance (e.g., Fig. 4f). Correlograms with a symmetrical hump centered near zero delay, often referred to as “common input” (CI), indicate that the pair of cells tended to discharge in synchrony (e.g., Fig. 4c).

The classes of correlograms showing significant deviations from flatness were more frequently ($p < 0.05$) observed in 6-OHDA treated rats (38/58, 66%) than in control subjects (17/42, 40%) (Fig. 5). Most of the significant interactions were of CI type, namely 11/42 (26%) in the control group and 28/58 (48%) in the 6-OHDA treated group. The other curves with

significant deviations from flatness were grouped together in the “other” classes of interactions.

3. Discussion

In the 6-OHDA treated rats of the present study we have demonstrated that the lack of DA does not significantly change the rate and type of firing patterns of STN neurons. We found that cells with initial through in their autocorrelograms (IPT) and cells with oscillatory activity (OSC) were characterized by a similar rate of firing (approximately equal to 6.6 spikes/s on average for control and treated rats) which was about twice higher than the rate of the other cell types (approximately equal to 2.7 spikes/s on average for control and treated rats). The cell types IPT and OSC represented together 39% and 43% of STN units in control and treated rats, respectively. Within this group, the lesion of SNC tended to increase the relative number of IPT firing pattern and to decrease the relative number of OSC. The observation about IPT and OSC might be associated with an increase in recurrent and possibly synchronous feedforward inhibition provided by the loop STN-GPe-STN (Fig. 1) and by the facilitation of the inhibitory interneurons within the STN. The loop STN-GPi-STN can also support recurrent inhibition (Fig. 1).

The stronger STN firing the more effective would be the excitatory effect on the GPe and GPi and subsequent recurrent inhibition of STN neurons as suggested by administration of the D1/D2 agonist apomorphine (Chetrit et al., 2009; Ruskin et al., 2003). In this case the net effect on the firing rate would very small, if any, given an increase in the strength of inhibition of STN neurons following a rise in their activity. In order to understand our results we must also consider the interdependency of the activity of STN and GPe given their

Table 1 – Firing rates (median, mean \pm S.E.M.) of the STN units grouped by cell types in control and 6-OHDA treated rats recorded under general anesthesia induced by Equithesin.

Cell type		IPT	BC	OSC	REG
Control group					
N	61	14	13	10	24
	(100%)	(23%)	(21%)	(16%)	(40%)
Firing rate (spikes/s)		6.7	1.3	5.1	1.7
		(6.9 \pm 2.3)	(2.5 \pm 1.5)	(6.1 \pm 2.6)	(2.6 \pm 1.0)
6-OHDA treated group					
N	83	26	24	10	23
	(100%)	(31%)	(29%)	(12%)	(28%)
Firing rate (spikes/s)		6.2	2.0	4.5	2.7
		(6.5 \pm 2.5)	(2.8 \pm 1.5)	(6.7 \pm 4.7)	(2.9 \pm 1.7)

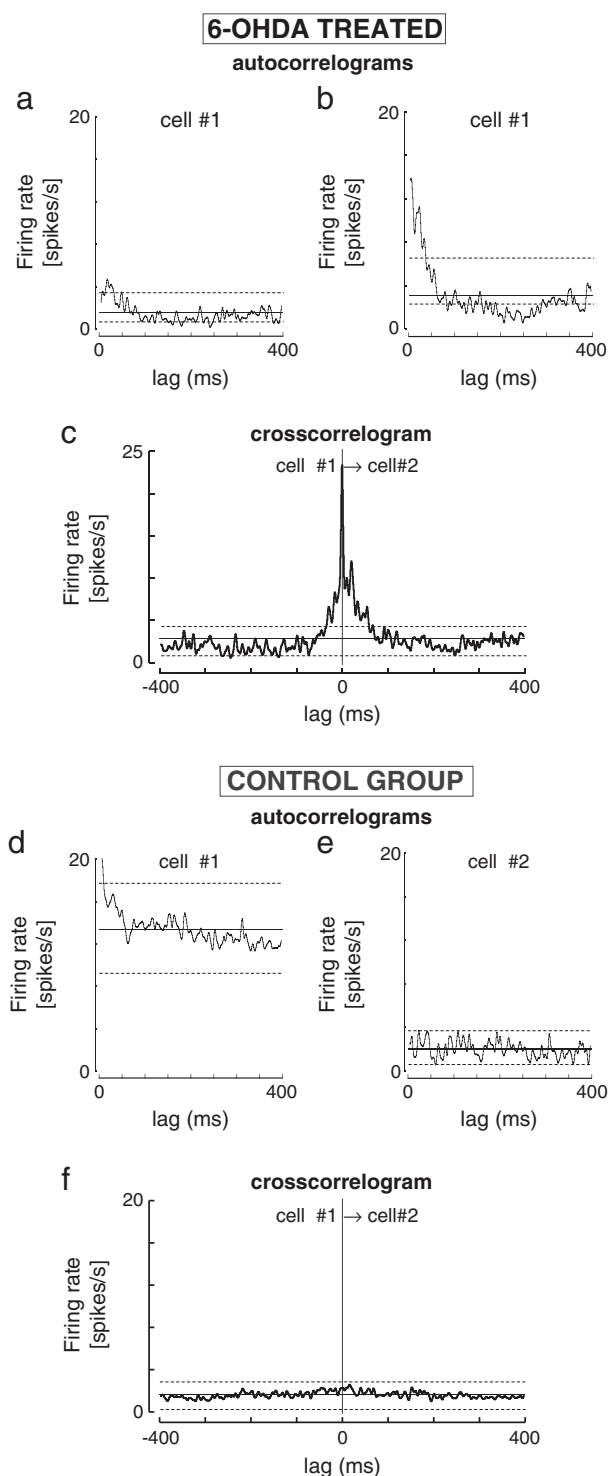


Fig. 4 – Autocorrelograms and crosscorrelogram of a cell pair recorded in a treated rat (panels a, b and c) and of a cell recorded in a control rat (panels d, e and f). The peak centered near time zero of panel (c) shows synchronous firing of the cells (a and b), referred to as “common input” (CI) type. The flat curve in panel (f) shows no-interaction between cells (d and e). The curves are smoothed by a Gaussian shaped bin of 5 ms. The firing rates of c #1 (a) and c #2 (b) are 1.6 and 1.9 spikes/s, respectively. The firing rates of c #1 (d) and c #2 (e) are 9.2 and 1.1 spikes/s, respectively.

strong interconnections. STN and GPe could constitute a kind of central pacemaker modulated by striatal inhibition of GPe neurons responsible for synchronized oscillatory activity in the normal and pathological BG (Plenz and Kital, 1999). DA denervation of the striatum and extrastriatal BG is likely to alter recurrent activity within this circuit thus leading to pathological activity that resonates throughout the BG and motor system (Bevan et al., 2006). The activity of GPe is strongly dependent on firing of striatopallidal neurons which mainly express D2 receptors, and give rise to the indirect pathway through the BG. We assume that this pathway is the one that determines mainly the activity of STN neurons. In case of loss of DA in the striatum, the STN could be disinhibited via the indirect pathway due to stronger activity of striatopallidal cells and suppression of firing of the GABAergic GPe cells projecting to the STN (Sil'kis, 2005). This hypothesis is supported by the fact that a high DA concentration is necessary for the activation of D2 receptors on striatopallidal cells (Williams and Millar, 1990) which in turn would affect STN activity according to the intensity of DA cell lesion.

Our results are partially in disagreement with previous studies that reported an increase in the firing rate of STN neurons with more irregular and bursty-firing patterns of STN neurons as well as significant decrease in relative amount of tonic neurons (Breit et al., 2007). In addition, many existing studies show contrasting tendencies to increasing or to decreasing firing rate in STN after lesion of the SNc (Hassani et al., 1996; Hollerman and Grace, 1992; Magill et al., 2001; Ni et al., 2001; Vila et al., 2000). We observed a decrease in the relative number of OSC cell types, in contrast with an increase in the incidence of slow oscillations (0.3–2.5 Hz) reported by Walters et al. (2007) after dopamine cell lesion in urethane-anesthetized rats. A possible source of discrepancy with previous studies may arise from the use of different anesthesia. We avoided the use of ketamine because we had previously observed that this non-competitive antagonist of NMDA receptors produces a massive change of firing patterns in the SNr of control animals (Villa and Lorenzana, 1997). We have also avoided the use of urethane because of urethane-induced slow wave cortical activity that alters significantly the analysis of correlations between spike trains (Jones, 2004; Kasanetz et al., 2008; Manns et al., 2000a,b). Our finding that IPT and regular spiking neurons were the commonest types of firing under Equithesin anesthesia appears in agreement with recordings performed in the STN of unanesthetized 6-OHDA treated rats that shown also a decrease in the number of oscillatory units (Allers et al., 2000; Kreiss et al., 1997). This indicates that the active metabolites of Equithesin are unlikely to exert a strong influence upon the discharge patterns of STN units. Accordingly, Equithesin anesthesia could be viewed as a good control condition for studies in anesthetized rats.

The main finding of this study was that in the 6-OHDA treated rats pairs of simultaneously recorded adjacent STN units fired significantly more often in synchrony. A significant increase in cross-correlations between STN neurons has also been observed following a lesion of GPe without 6-OHDA treatment (Ryan et al., 1992). This result is comparable with ours because a lesion of GPe decreases STN inhibition, and DA deficiency leads to STN disinhibition via the indirect pathway through the BG (Fig. 1). In the rat the neurons of STN are characterized by an important dendritic field around the cell

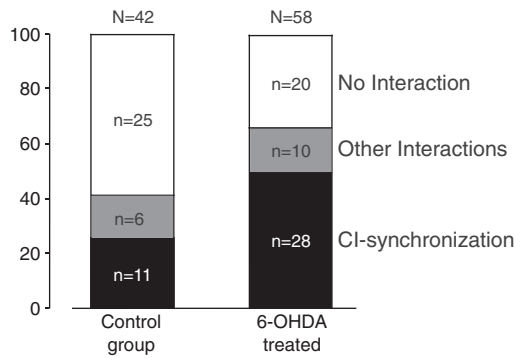


Fig. 5 – Distribution of crosscorrelation types (“No Interaction”, “Common Input-synchronization”, and “Other Interactions” referred to significant interactions other than synchronicity) between pairs of STN units recorded with the same electrode. The ordinate axis is in percentage. The raw numbers of correlograms are indicated by *n* and *N*.

bodies, thus suggesting that excitatory recurrent collaterals could represent the element of circuitry subserving the synchronization of closely spatially related neurons (Hammond et al., 1983). Strong synchronization in STN cell firing could also modify propagation of signals from the neocortex to the output BG nuclei. It is known that hyperdirect cortico-subthalamic pathway may funnel the information whereas the indirect cortico-striato-subthalamic pathway may process the information through parallel loops (Parent et al., 2000). Indeed, excitatory responses to stimulation of diverse cortical areas were found in distinct striatal territories, and none of the cells responded to two cortical stimulation sites (Kolomiets et al., 2001). In contrast, the existence of specific patterns of convergence of information flow from functionally distinct cortical areas in the STN allows interactions between parallel channels (Bar-Gad et al., 2003; Kolomiets et al., 2003).

It is widely believed that Parkinsonian symptoms are most likely caused by abnormal synchronous oscillating neuronal activity within the BG (Avila et al., 2010; Bergman and Deuschl, 2002). Akinesia and hypokinesia could be caused by abnormal hypoactivity of the GPe neurons and subsequent excessive inhibition of BG targets (Wichmann and DeLong, 1996). Recordings in human STN of PD patients during DBS neurosurgery (Chibirova, 2006) showed that the same firing patterns observed in our study (i.e., IPT, BC, OSC and REG represented 33%, 19%, 15%, 33%, respectively) in a proportion similar to the one in 6-OHDA treated rats (Table 1). Chibirova (2006) demonstrated that the clinical symptoms were associated to specific features in the firing pattern observed in the STN cells of PD patients (Fig. 6). Motor impairments typically associated to clinical symptoms in human PD patients have been observed in rodents treated with MPTP or 6-OHDA. A complete lesion of SNc by 6-OHDA injection impaired dramatically (by 80%) the stepping of the contralateral paw (Barnéoud et al., 2000). Animals with more than 95% bilateral SNc lesion demonstrated bradykinesia symptoms (Sakai and Gash, 1994) and $\approx 75\%$ DA cells loss produced forelimb akinesia manifested in stepping deficit (Tseng et al., 2005). It is important to note that akinesia induced by 6-OHDA could be restored

to normal locomotion by DBS of the STN, which caused a decrease in firing rate and burst firing in the contralateral side of STN (Shi et al., 2006) and stepping performance in MPTP-treated mice was significantly improved by administration of L-DOPA (Blume et al., 2009). Animal models of PD can never reproduce the entire range of symptoms observed in human patients but they have proven to be valuable for the investigation of the subsequent mechanisms.

It is interesting to compare our results, which emphasize the increase in STN synchronous activity in 6-OHDA treated rats, with those of Chibirova (2006) who found a significant association between synchronous firing in the STN of PD patients with akinesia and bradykinesia but not with tremor and rigidity (Fig. 6). Given the complexity of the physiopathological mechanisms which generate parkinsonian symptomatology the assumption that each class of clinical signs (tremor, akinesia, rigidity, dyskinesia, bradykinesia) is produced by a specific and separate mechanism was questioned (Gross et al., 1999). We support the hypothesis that synchronous activity of STN neurons is correlated with akinesia because it could promote increase in SNr cell firing due to simultaneous glutamate release from numerous STN terminals in the SNr and its high concentration in synaptic cleft must promote increase in SNr cell firing. Increased glutamatergic innervation of the SNr is known to contribute to the motor deficits in PD, whereas suppression of glutamate release by injection of agonists of group III mGlu receptors into the SNr exerts functional protection against 6-OHDA lesion (Austin et al., 2010). The same procedure reversed reserpine-induced akinesia (Austin et al., 2010) indirectly suggesting the important role of glutamate concentration in the SNr for akinesia. It has been proposed that the normal dopaminergic system supports segregation of the functional subcircuits of the BG (Bergman et al., 1998) and that the BG-thalamocortical loop dynamically modulates the degree of correlation of neuronal activity in order to select the proper motor behavior (Gale et al., 2009; Yasoshima et al., 2005). We suggest that dopaminergic input is necessary to maintain a balance between funneling and parallel processings, and changes in DA concentration exert modulatory role upon switching between one to the other mode of transmission.

In conclusion, the finding of increased synchronicity between spatially adjacent STN neurons in 6-OHDA treated

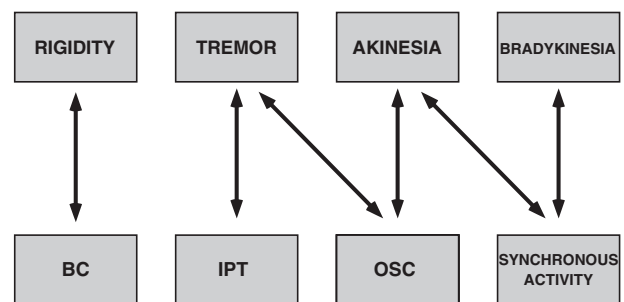


Fig. 6 – Dependencies between human symptoms and firing pattern parameters.

Adapted from Chibirova (2006).

rats and the careful analysis of the cell types defined by their firing patterns offer a new insight to the mechanisms of motor disturbances in PD.

4. Experimental procedures

4.1. Subjects and surgical procedure

Experiments were performed in male Wistar rats weighing 300–350 g. They were kept under controlled conditions of light, temperature and humidity, with food and water available *ad libitum*. All animal experiments were carried out in accordance with the UK Animals (Scientific Procedures) Act, 1986 and associated guidelines, the EEC Council Directives (86/609/EEC, OJ L 358, 1, 12 December, 1987) and the Guide for the Care and Use of Experimental Animals (Canadian Council on Animal Care). Rats received atropine sulfate (0.4 mg/kg, i.p.) immediately prior to surgery as a prophylactic against respiratory distress. All surgical wounds were infiltrated with Scandicaine 0.5% (AstraZeneca) for local anesthesia. General anesthesia was induced by Equithesin (3 ml/kg, i.p.) (chloral hydrate 4.24 mg, sodium pentobarbital 0.97 mg, and magnesium sulfate MgSO₄ 2.13 mg in 100 ml solution with 11% ethanol, 42% propylene glycol v/v) at a dose corresponding to 130 mg/kg chloral hydrate and 30 mg/kg pentobarbital (Preda et al., 2008). During the anesthesia the body temperature was monitored and maintained in the range 38–39 °C by means of a heating pad.

4.2. 6-hydroxydopamine lesion of the SNc

The subjects (n=8) received one injection of 6 µl of solution in the left substantia nigra pars compacta (SNc) aimed at target stereotaxic coordinates A 3.2; L +2.2; V 7.2 mm (from lambda and dura) (Paxinos and Watson, 1986). The injected solution contained 12 µl of 6-OHDA hydrobromide (Sigma, Paris, France) dissolved in 6 µl of 0.9% NaCl with 0.1% ascorbic acid (Jouve et al., 2010). It is generally advised to inject desipramine or pargyline prior to 6-OHDA administration to protect noradrenergic neurons (Breese and Traylor, 1971) but this practice has been questioned (Debeir et al., 2005). There is a nonlinear dose dependent effect of 6-OHDA on noradrenergic neurons, and more recent work has shown that desipramine is not needed at the lower doses of 6-OHDA used in current study (Jouve et al., 2010). Notice that even in case of minor noradrenergic degeneration following 6-OHDA injection, the animal model would be closer to human PD where same degeneration of catecholaminergic cells is likely to be associated to the pathological state (Delaville et al., 2011; Mavridis et al., 1991; Pillon et al., 1989). For control subjects (n=8), an equal volume of vehicle (6 µl saline with 0.1% ascorbic acid) was injected. The 6-OHDA solution were kept on ice (4 °C) and protected from light to minimize oxidation. The injection was made using a stainless steel cannula connected via a polyethylene catheter to a Hamilton microsyringe which was controlled by an infusion pump at a flow rate of 0.1 µl/min. At the end of each injection, the syringe was kept in place for additional 5 min before being very slowly retracted from the brain, in no less than 5 more minutes.

4.3. Rotational behavior

Three weeks after the 6-OHDA-induced lesions were performed, the rats were screened for rotation response to subcutaneous injection of apomorphine (0.5 mg/kg, s.c., Sigma) (Casas et al., 1999). Five minutes after the apomorphine injection DA-lesioned rats showed more than 20 rotations per 5 min to the contralateral side. One subject did not match this criterion and was discarded from further study. It has previously been demonstrated that rats satisfying this criterion are characterized by striatal DA depletion greater than 95% (Papa et al., 1994).

4.4. Electrophysiological recordings

General anesthesia was induced by Equithesin (3 ml/kg, i.p.). The pedal withdrawal reflex was periodically checked and supplemental doses of Equithesin were provided during the whole recording session if necessary. Extracellular single unit recordings in STN (3.6–4.2 mm posterior to bregma, L 2.3–3.7 mm, V 6.5–8.5 mm from the dura, Paxinos and Watson, 1986) ipsilateral to the side of injection in SNc (in this study always the left hemisphere), were performed with glass-coated platinum-plated tungsten microelectrodes having an impedance in the range 0.5–2 MΩ measured at a frequency of 1 kHz (Frederick Haer & Co, Bowdoinham, Maine, USA). Signals from the microelectrodes were amplified, filtered (400 Hz–20 kHz), viewed on an oscilloscope, and digitally recorded in WAV format (44,100 Hz sampling rate, 16 bit resolution) for computerized offline analysis. Spike sorting of the electrode signal files, based on a template matching algorithm, was able to separate up to three spikes recorded from the same channel (Asai et al., 2005). The time of spike discharges were digitally stored at a time resolution of 1 ms for later processing.

The first recording session started approximately 90 min after the end of the surgical preparation. The data were gathered during *spontaneous activity*, i.e. in the absence of any operator-induced stimulation, for an interval of 5–10 min. All recordings started at least 15 min after any supplementary dose of anesthetic and terminated at least 20 min before a new injection, thus assuming the recording conditions corresponded to a steady level of anesthesia.

4.5. Histological and immunohistological examinations

Upon completion of the recording session (lasting in total 5–8 h), electrolytic lesions were placed at specific depths of the electrode track using 10 current pulses of 8 µA for 7 s at regular intervals of 10 s. Subjects were sacrificed by transcardial perfusion with 100 ml 0.9% NaCl immediately followed by 500 ml of fixative solution (4% paraformaldehyde in phosphate buffer 0.1 M, pH 7.3). The brains were removed after perfusion and cut into 40 µm sections using a microtome. Sections including SNc were examined for immunohistochemical staining of tyrosine hydroxylase (TH). In sections from 6-OHDA treated rats this analysis was aimed at determining the extent of the SNc lesion. Brain slices were immunoreacted with a primary, polyclonal antibody against rat tyrosine hydroxylase (TH, Abcam PLC, Cambridge, UK) and then with a biotinylated goat anti-rabbit IgG (Vector Labs,

Burlingame, CA) secondary antibody. The signal was amplified using avidin and biotinylated horseradish peroxidase using an Elite ABC Vectastain Kit (Vector, Burlingame, CA) (Park et al., 2007). Sections including STN and basal ganglia from all subjects were stained with cresyl violet for the reconstruction of the electrode tracks and localization of the electrolytic lesions.

4.6. Statistical analysis

Spike trains were analyzed by time series renewal density histograms (Abeles, 1982). Using this technique, all histograms were scaled in rate units (spikes/s) and smoothed after convolution with a moving Gaussian-shaped bin of 5 ms width. For each histogram, the 99% confidence limits were calculated, assuming that spike occurrences followed a Poisson distribution. Firing rates of STN neurons of both groups of rats were compared by Mann-Whitney's U-test because of the limited sample sizes we could not test properly the normality of the distributions. A one-tailed Fisher's exact t-test was used to compare the number of each cell type identified and the proportion of significant cross-correlations in both groups of rats.

Acknowledgments

The Authors wish to thank Marguerite Kaczorowski for her technical assistance throughout the histological procedures and the reviewers whose comments have contributed to improve the clarity of the paper. We thank A.L. Benabid, S. Chabardes, T. Aksenova, O.K. Chibirova and the neurosurgery and neurology teams of the C.H.U. Grenoble for giving access to the results gathered in human PD patients.

REFERENCES

- Abeles, M., 1982. Quantification, smoothing, and confidence limits for single-units' histograms. *J. Neurosci. Methods* 5, 317–325.
- Allers, K.A., Kreiss, D.S., Walters, J.R., 2000. Multisecond oscillations in the subthalamic nucleus: effects of apomorphine and dopamine cell lesion. *Synapse* 38, 38–50.
- Asai, Y., Aksenova, T., Villa, A.E.P., 2005. On-line real-time oriented application for neuronal spike sorting with unsupervised learning. *Lecture Notes in Computer Science*, vol. 3696, pp. 109–114.
- Austin, P.J., Betts, M.J., Broadstock, M., O'Neill, M.J., Mitchell, S.N., Duty, S., 2010. Symptomatic and neuroprotective effects following activation of nigral group III metabotropic glutamate receptors in rodent models of Parkinson's disease. *Br. J. Pharmacol.* 160, 1741–1753.
- Avila, I., Parr-Brownlie, L.C., Brazhnik, E., Castañeda, E., Bergstrom, D.A., Walters, J.R., 2010. Beta frequency synchronization in basal ganglia output during rest and walk in a hemiparkinsonian rat. *Exp. Neurol.* 221, 307–319.
- Bar-Gad, I., Heimer, G., Ritov, Y., Bergman, H., 2003. Functional correlations between neighboring neurons in the primate globus pallidus are weak or nonexistent. *J. Neurosci.* 23, 4012–4016.
- Barnéoud, P., Descombris, E., Aubin, N., Arous, D.N., 2000. Evaluation of simple and complex sensorimotor behaviours in rats with a partial lesion of the dopaminergic nigrostriatal system. *Eur. J. Neurosci.* 12, 322–336.
- Benabid, A.L., Pollak, P., Gross, C., Hoffmann, D., Benazzouz, A., Gao, D.M., Laurent, A., Gentil, M., Perret, J., 1994. Acute and long-term effects of subthalamic nucleus stimulation in Parkinson's disease. *Stereotact. Funct. Neurosurg.* 62, 76–84.
- Bergman, H., Deuschl, G., 2002. Pathophysiology of Parkinson's disease: from clinical neurology to basic neuroscience and back. *Mov. Disord.* 17 (Suppl 3), 28–40.
- Bergman, H., Feingold, A., Nini, A., Raz, A., Slovin, H., Abeles, M., Vaadia, E., 1998. Physiological aspects of information processing in the basal ganglia of normal and parkinsonian primates. *Trends Neurosci.* 21, 32–38.
- Bergman, H., Wichmann, T., Karmon, B., DeLong, M.R., 1994. The primate subthalamic nucleus. II. Neuronal activity in the MPTP model of parkinsonism. *J. Neurophysiol.* 72, 507–520.
- Bevan, M.D., Atherton, J.F., Baufreton, J., 2006. Cellular principles underlying normal and pathological activity in the subthalamic nucleus. *Curr. Opin. Neurobiol.* 16, 621–628.
- Blume, S.R., Cass, D.K., Tseng, K.Y., 2009. Stepping test in mice: a reliable approach in determining forelimb akinesia in MPTP-induced parkinsonism. *Exp. Neurol.* 219, 208–211.
- Breese, G.R., Traylor, T.D., 1971. Depletion of brain noradrenaline and dopamine by 6-hydroxydopamine. *Br. J. Pharmacol.* 42, 88–99.
- Breit, S., Bouali-Benazzouz, R., Popa, R.C., Gasser, T., Benabid, A.L., Benazzouz, A., 2007. Effects of 6-hydroxydopamine-induced severe or partial lesion of the nigrostriatal pathway on the neuronal activity of pallido-subthalamic network in the rat. *Exp. Neurol.* 205, 36–47.
- Casas, M., Prat, G., Robledo, P., Jané, F., 1999. Rotational behavior in dopamine nigrostriatal denervated rats: effects of a wide range of time intervals between apomorphine administrations. *Pharmacol. Biochem. Behav.* 62, 481–485.
- Chetrit, J., Ballion, B., Laquitaine, S., Belujon, P., Morin, S., Taupignon, A., Bioulac, B., Gross, C.E., Benazzouz, A., 2009. Involvement of basal ganglia network in motor disabilities induced by typical antipsychotics. *PLoS One* 4, 1–14.
- Chibirova, O., 2006. Interactions fonctionnelles dans les ganglions de la base étudiées par l'enregistrement simultané des activités unitaires discriminées par un algorithme non supervisé de tri de potentiels d'action. Ph.D. thesis. Université Joseph-Fourier - Grenoble I. <http://tel.archives-ouvertes.fr/tel-00115720/en/>.
- Debeir, T., Ginestet, L., François, C., Laurens, S., Martel, J.C., Chopin, P., Marien, M., Colpaert, F., Raisman-Vozari, R., 2005. Effect of intrastriatal 6-OHDA lesion on dopaminergic innervation of the rat cortex and globus pallidus. *Exp. Neurol.* 193, 444–454.
- Delaville, C., Deurwaerdère, P.D., Benazzouz, A., 2011. Noradrenaline and Parkinson's disease. *Front Syst. Neurosci.* 5: 31.
- DeLong, M.R., Wichmann, T., 2007. Circuits and circuit disorders of the basal ganglia. *Arch. Neurol.* 64, 20–24.
- Gale, J.T., Shields, D.C., Jain, F.A., Amirmovin, R., Eskandar, E.N., 2009. Subthalamic nucleus discharge patterns during movement in the normal monkey and parkinsonian patient. *Brain Res.* 1260, 15–23.
- Gross, C.E., Boraud, T., Guehl, D., Bioulac, B., Bezard, E., 1999. From experimentation to the surgical treatment of Parkinson's disease: prelude or suite in basal ganglia research? *Prog. Neurobiol.* 59, 509–532.
- Hammond, C., Rouzaire-Dubois, B., Féger, J., Jackson, A., Crossman, A.R., 1983. Anatomical and electrophysiological studies on the reciprocal projections between the subthalamic nucleus and nucleus tegmenti pedunculo-pontinus in the rat. *Neuroscience* 9, 41–52.
- Hassani, O.K., Mouroux, M., Féger, J., 1996. Increased subthalamic neuronal activity after nigral dopaminergic lesion independent of disinhibition via the globus pallidus. *Neuroscience* 72, 105–115.
- Hollerman, J.R., Grace, A.A., 1992. Subthalamic nucleus cell firing in the 6-OHDA-treated rat: basal activity and response to haloperidol. *Brain Res.* 590, 291–299.

- Hutchison, W.D., Dostrovsky, J.O., Walters, J.R., Courtemanche, R., Boraud, T., Goldberg, J., Brown, P., 2004. Neuronal oscillations in the basal ganglia and movement disorders: evidence from whole animal and human recordings. *J. Neurosci.* 24, 9240–9243.
- Jones, B.E., 2004. Activity, modulation and role of basal forebrain cholinergic neurons innervating the cerebral cortex. *Prog. Brain Res.* 145, 157–169.
- Jouve, L., Salin, P., Melon, C., Kerkerian-Le Goff, L., 2010. Deep brain stimulation of the center median–parafascicular complex of the thalamus has efficient anti-parkinsonian action associated with widespread cellular responses in the basal ganglia network in a rat model of Parkinson's disease. *J. Neurosci.* 30, 9919–9928.
- Kasanetz, F., Riquelme, L.A., Della-Maggiore, V., O'Donnell, P., Murer, M.G., 2008. Functional integration across a gradient of corticostriatal channels controls up state transitions in the dorsal striatum. *Proc. Natl. Acad. Sci. U.S.A.* 105, 8124–8129.
- Kolomiets, B.P., Deniau, J.M., Glowinski, J., Thierry, A.M., 2003. Basal ganglia and processing of cortical information: functional interactions between trans-striatal and trans-subthalamic circuits in the substantia nigra pars reticulata. *Neuroscience* 117, 931–938.
- Kolomiets, B.P., Deniau, J.M., Maily, P., Ménétrey, A., Glowinski, J., Thierry, A.M., 2001. Segregation and convergence of information flow through the cortico-subthalamic pathways. *J. Neurosci.* 21, 5764–5772.
- Kreiss, D.S., Mastropietro, C.W., Rawji, S.S., Walters, J.R., 1997. The response of subthalamic nucleus neurons to dopamine receptor stimulation in a rodent model of Parkinson's disease. *J. Neurosci.* 17, 6807–6819.
- Li, X.H., Wang, J.Y., Gao, G., Chang, J.Y., Woodward, D.J., Luo, F., 2010. High-frequency stimulation of the subthalamic nucleus restores neural and behavioral functions during reaction time task in a rat model of Parkinson's disease. *J. Neurosci. Res.* 88, 1510–1521.
- Limousin, P., Krack, P., Pollak, P., Benazzouz, A., Ardouin, C., Hoffmann, D., Benabid, A.L., 1998. Electrical stimulation of the subthalamic nucleus in advanced Parkinson's disease. *N. Engl. J. Med.* 339, 1105–1111.
- Magill, P.J., Bolam, J.P., Bevan, M.D., 2001. Dopamine regulates the impact of the cerebral cortex on the subthalamic nucleus–globus pallidus network. *Neuroscience* 106, 313–330.
- Manns, I.D., Alonso, A., Jones, B.E., 2000a. Discharge profiles of juxtacellularly labeled and immunohistochemically identified gabaergic basal forebrain neurons recorded in association with the electroencephalogram in anesthetized rats. *J. Neurosci.* 20, 9252–9263.
- Manns, I.D., Alonso, A., Jones, B.E., 2000b. Discharge properties of juxtacellularly labeled and immunohistochemically identified cholinergic basal forebrain neurons recorded in association with the electroencephalogram in anesthetized rats. *J. Neurosci.* 20, 1505–1518.
- Mavridis, M., Colpaert, F.C., Millan, M.J., 1991. Differential modulation of (+)-amphetamine-induced rotation in unilateral substantia nigra-lesioned rats by alpha 1 as compared to alpha 2 agonists and antagonists. *Brain Res.* 562, 216–224.
- Ni, Z.G., Bouali-Benazzouz, R., Gao, D.M., Benabid, A.L., Benazzouz, A., 2001. Time-course of changes in firing rates and firing patterns of subthalamic nucleus neuronal activity after 6-OHDA-induced dopamine depletion in rats. *Brain Res.* 899, 142–147.
- Papa, S.M., Engber, T.M., Kask, A.M., Chase, T.N., 1994. Motor fluctuations in levodopa treated parkinsonian rats: relation to lesion extent and treatment duration. *Brain Res.* 662, 69–74.
- Parent, A., Hazrati, L.N., 1995a. Functional anatomy of the basal ganglia. I. The cortico-basal ganglia-thalamo-cortical loop. *Brain Res. Brain Res. Rev.* 20, 91–127.
- Parent, A., Hazrati, L.N., 1995b. Functional anatomy of the basal ganglia. II. The place of subthalamic nucleus and external pallidum in basal ganglia circuitry. *Brain Res. Brain Res. Rev.* 20, 128–154.
- Parent, A., Sato, F., Wu, Y., Gauthier, J., Lévesque, M., Parent, M., 2000. Organization of the basal ganglia: the importance of axonal collateralization. *Trends Neurosci.* 23, 20–27.
- Park, Y.S., Jeon, M.F., Lee, B.H., Chang, J.W., 2007. Lesion of subthalamic nucleus in parkinsonian rats: effects of dopamine d(1) and d(2) receptor agonists on the neuronal activities of the substantia nigra pars reticulata. *J. Korean Neurosurg. Soc.* 42, 455–461.
- Paxinos, G., Watson, C., 1986. *The Rat Brain in Stereotaxic Coordinates* 2nd edition. Academic Press, Sydney and Orlando.
- Pillon, B., Dubois, B., Bonnet, A.M., Esteguy, M., Guimaraes, J., Vigouret, J.M., Lhermitte, F., Agid, Y., 1989. Cognitive slowing in Parkinson's disease fails to respond to levodopa treatment: the 15-objects test. *Neurology* 39, 762–768.
- Plenz, D., Kital, S.T., 1999. A basal ganglia pacemaker formed by the subthalamic nucleus and external globus pallidus. *Nature* 400, 677–682.
- Pogosyan, A., Yoshida, F., Chen, C.C., Martinez-Torres, I., Foltynie, T., Limousin, P., Zrinzo, L., Hariz, M.I., Brown, P., 2010. Parkinsonian impairment correlates with spatially extensive subthalamic oscillatory synchronization. *Neuroscience* 171, 245–257.
- Preda, S., Govoni, S., Lanni, C., Racchi, M., Mura, E., Grilli, M., Marchi, M., 2008. Acute beta-amyloid administration disrupts the cholinergic control of dopamine release in the nucleus accumbens. *Neuropsychopharmacology* 33, 1062–1070.
- Ruskin, D.N., Bergstrom, D.A., Tierney, P.L., Walters, J.R., 2003. Correlated multisecond oscillations in firing rate in the basal ganglia: modulation by dopamine and the subthalamic nucleus. *Neuroscience* 117, 427–438.
- Ryan, L.J., Sanders, D.J., Clark, K.B., 1992. Auto- and cross-correlation analysis of subthalamic nucleus neuronal activity in neostriatal- and globus pallidus-lesioned rats. *Brain Res.* 583, 253–261.
- Sakai, K., Gash, D.M., 1994. Effect of bilateral 6-ohda lesions of the substantia nigra on locomotor activity in the rat. *Brain Res.* 633, 144–150.
- Shi, L.H., Luo, F., Woodward, D.J., Chang, J.Y., 2006. Basal ganglia neural responses during behaviorally effective deep brain stimulation of the subthalamic nucleus in rats performing a treadmill locomotion test. *Synapse* 59, 445–457.
- Sil'kis, I.G., 2005. Possible mechanisms of involvement of the subthalamic nucleus and structures interconnected with this nucleus in movement disorders evoked by dopamine depletion. *Usp. Fiziol. Nauk* 36, 66–83.
- Tai, C.H., Boraud, T., Bezard, E., Bioulac, B., Gross, C., Benazzouz, A., 2003. Electrophysiological and metabolic evidence that high-frequency stimulation of the subthalamic nucleus bridges neuronal activity in the subthalamic nucleus and the substantia nigra reticulata. *FASEB J.* 17, 1820–1830.
- Takada, M., Nishihama, M.S., Nishihama, C.C., Hattori, T., 1988. Two separate neuronal populations of the rat subthalamic nucleus project to the basal ganglia and pedunculopontine tegmental region. *Brain Res.* 442, 72–80.
- Tseng, K.Y., Kargieman, L., Gacio, S., Riquelme, L.A., Murer, M.G., 2005. Consequences of partial and severe dopaminergic lesion on basal ganglia oscillatory activity and akinesia. *Eur. J. Neurosci.* 22, 2579–2586.
- Utter, A.A., Basso, M.A., 2008. The basal ganglia: an overview of circuits and function. *Neurosci. Biobehav. Rev.* 32, 333–342.
- Vila, M., Périer, C., Féger, J., Yelnik, J., Faucheux, B., Ruberg, M., Raisman-Vozari, R., Agid, Y., Hirsch, E.C., 2000. Evolution of changes in neuronal activity in the subthalamic nucleus of rats with unilateral lesion of the substantia nigra assessed by metabolic and electrophysiological measurements. *Eur. J. Neurosci.* 12, 337–344.
- Villa, A.E.P., Lorenzana, V.M.B., 1997. Ketamine modulation of the temporal pattern of discharges and spike train interactions in the rat substantia nigra pars reticulata. *Brain Res. Bull.* 43, 525–535.

Walters, J.R., Hu, D., Itoga, C.A., Parr-Brownlie, L.C., Bergstrom, D.A., 2007. Phase relationships support a role for coordinated activity in the indirect pathway in organizing slow oscillations in basal ganglia output after loss of dopamine. *Neuroscience* 144, 762–776.

Wichmann, T., DeLong, M.R., 1996. Functional and pathophysiological models of the basal ganglia. *Curr. Opin. Neurobiol.* 6, 751–758.

Williams, G.V., Millar, J., 1990. Concentration-dependent actions of stimulated dopamine release on neuronal activity in rat striatum. *Neuroscience* 39, 1–16.

Yasoshima, Y., Kai, N., Yoshida, S., Shiosaka, S., Koyama, Y., Kayama, Y., Kobayashi, K., 2005. Subthalamic neurons coordinate basal ganglia function through differential neural pathways. *J. Neurosci.* 25, 7743–7753.