

Supporting Information

Interfacial activity and interfacial shear rheology of native β -lactoglobulin monomers and their heat-induced fibers

Jin-Mi Jung¹, Deniz Zeynel Gunes² and Raffaele Mezzenga^{3*}

¹*Department of Physics and Fribourg Center for Nanomaterials, University of Fribourg, Ch. Musée 3, CH-1700, Fribourg, Switzerland,* ²*Department of Food Science and Technology, Nestlé Research Center, Vers-chez-les-Blanc, Lausanne 26, CH-1000, Switzerland,* ³*ETH Zurich, Food & Soft Materials Science, Institute of Food, Nutrition & Health, LFO23, Schmelzbergstrasse 9, 8092 Zurich, Switzerland.*

* to whom correspondence should be addressed: raffaele.mezzenga@agrl.ethz.ch

Determination of physical modifications of unconverted β -lactoglobulin monomers after a heat treatment of 90°C and 5 hours by HPLC

1. HPLC-C18

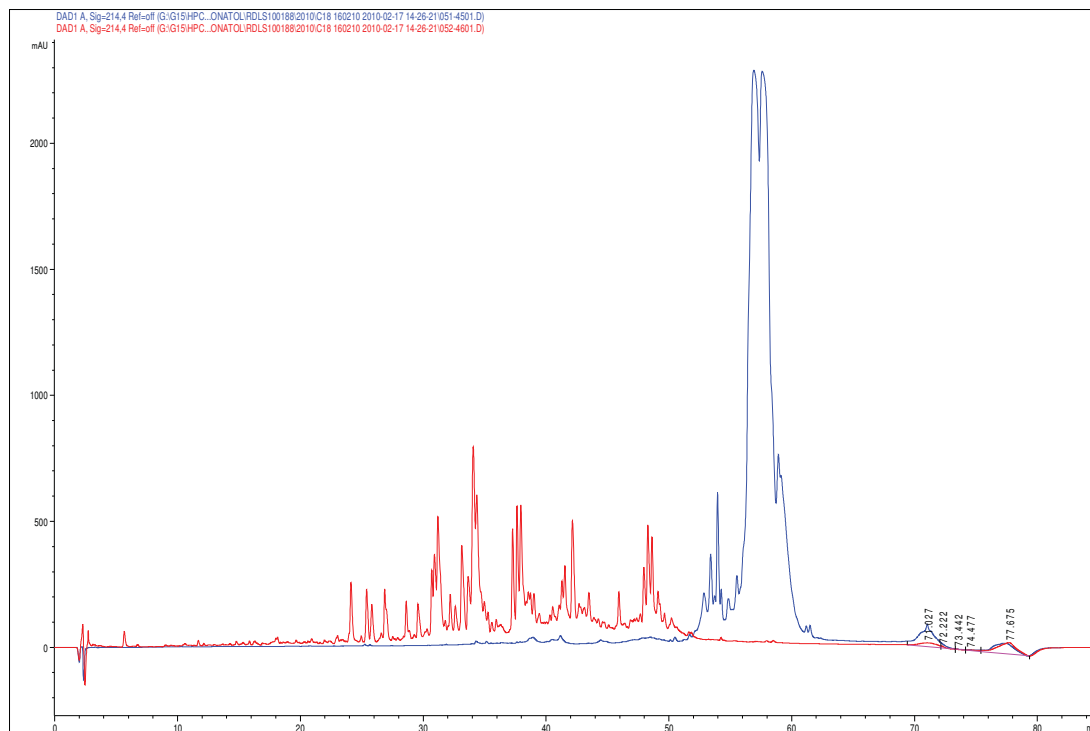


Figure S1. C18-Chromatogram of the solution of native β -lactoglobulin (2% wt, pH 2) (blue) and the filtrate of the heat-treated solution (90°C, 5h), obtained from ultra filtration through a 30kDa membrane (red).

2. HPLC-SEC

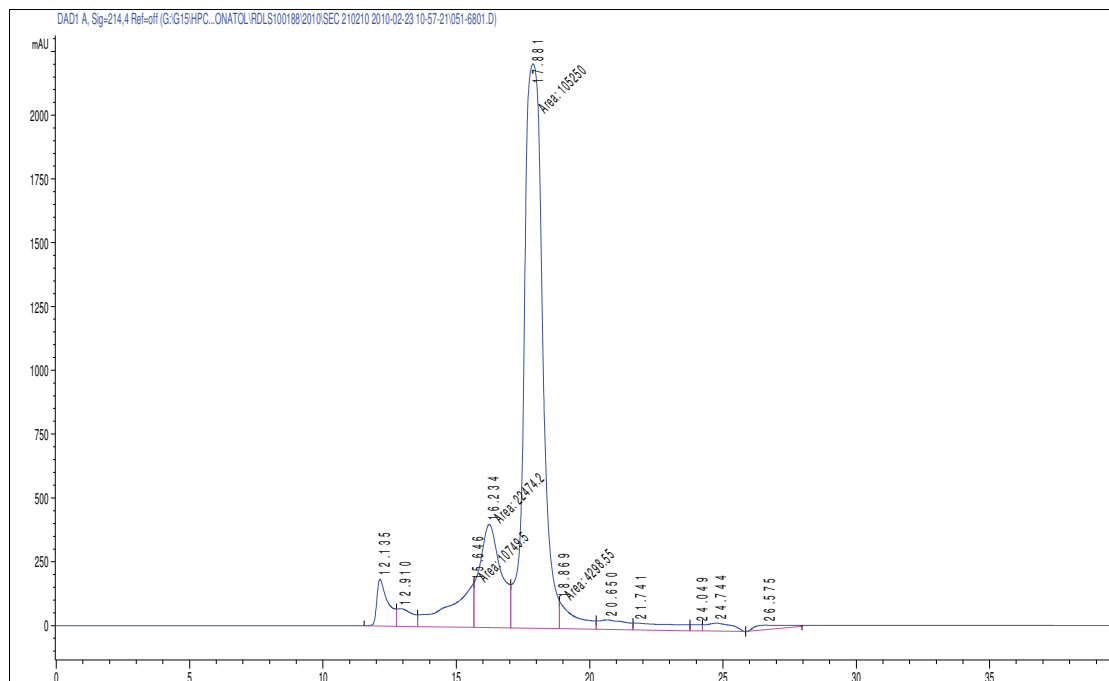


Figure S2. HPLC-SEC chromatogram of the solution of native β -lactoglobulin (2% wt, pH2).

Table S1. Corresponding elution times and areas for the peaks of **Figure S1**

#	Time	Area	Area %
1	12.135	5409.2	3.356
2	12.91	2816.4	1.748
3	15.646	10749.5	6.67
4	16.234	22474.2	13.945
5	17.881	105249.5	65.308
6	18.869	4298.5	2.667
7	20.65	2711.5	1.683
8	21.741	3111.4	1.931
9	24.049	665.8	0.413
10	24.744	2190.6	1.359
11	26.575	1483	0.92

In Red : β -lactoglobulin

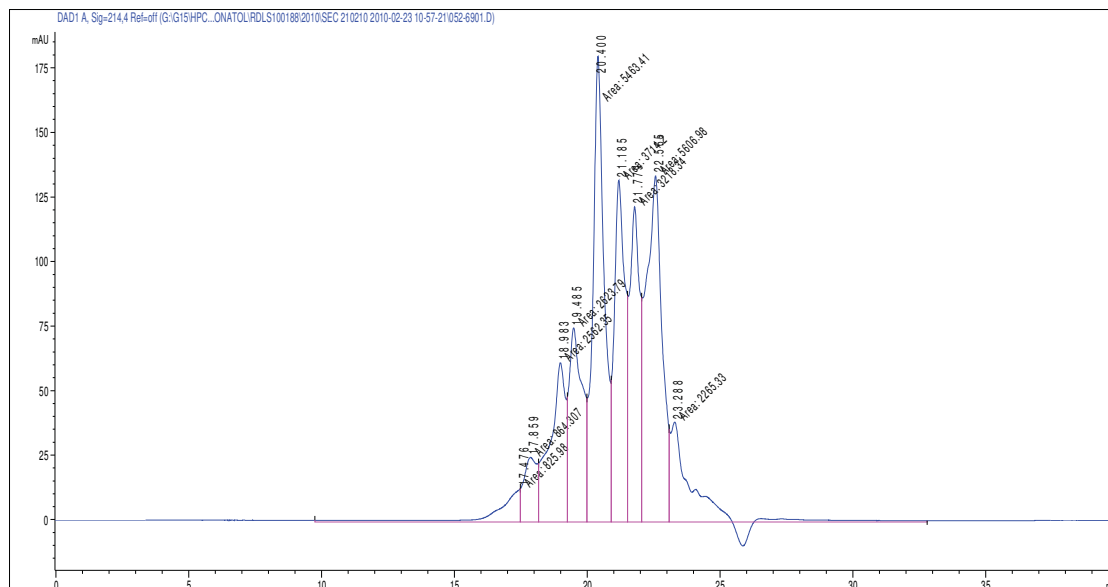


Figure S3. HPLC-SEC chromatogram of the filtrate of the solution of heat treated β -lactoglobulin (2%, pH2, 90°C, 5h) obtained from ultra filtration through a 30kDa membrane.

Table S2. Corresponding elution times and areas for the peaks of **Figure S3**

#	Time	Area	Area %
1	17.476	826	3.043
2	17.859	864.3	3.184
3	18.983	2562.4	9.44
4	19.485	2623.8	9.666
5	20.4	5463.4	20.127
6	21.185	3714.2	13.683
7	21.779	3218.3	11.856
8	22.565	5607	20.656
9	23.288	2265.3	8.345

In Red : β -lactoglobulin