

All-weather volume imaging of the boundary layer and troposphere using the MU radar

R. M. Worthington

Radio Science Center for Space and Atmosphere (RASC), Kyoto University, Uji, Kyoto 611-0011, Japan
Also at: Institute of Mathematical and Physical Sciences, University of Wales, Aberystwyth, SY23 3BZ, Wales, UK

Received: 15 May 2003 – Revised: 15 September 2003 – Accepted: 29 October 2003 – Published: 8 April 2004

Abstract. This paper shows the first volume-imaging radar that can run in any weather, revealing the turbulent three-dimensional structure and airflow of convective cells, rain clouds, breaking waves and deep convection as they evolve and move. Precipitation and clear air can be volume-imaged independently. Birds are detected as small high-power echoes moving near horizontal, at different speeds and directions from background wind. The volume-imaging method could be used to create a real-time virtual-reality view of the atmosphere, in effect making the invisible atmosphere visible in any weather.

Key words. Meteorology and atmospheric dynamics (convective processes, turbulence) – Radio science (instruments and techniques)

1 Introduction

Atmospheric measurements are usually one- or two-dimensional, for instance by radiosonde, wind profiler or aircraft. However, the atmosphere is often extremely three-dimensional and time-dependent, over as much as 10 orders of magnitude from global scales to turbulence, and mostly invisible, except for an unrepresentative fraction revealed by cloud. “Volume-imaging” can reveal full three-dimensional atmospheric dynamics and structure, on spatial scales of 0.1–10 km and time scales of ~5 s to study e.g. turbulence, chemical dispersion, precipitation, atmospheric waves, radio-wave propagation, aviation safety, and aerobiology.

Volume-imaging lidars track the motion of backscatter inhomogeneities assumed to move with the wind (Schols and Eloranta, 1992) or measure line-of-sight velocity using Doppler shift (Grund et al., 2001). However, lidars can fail in air containing optically-thick cloud, precipitation, insects, birds, or insufficient aerosol. Moving a lidar beam through a series of angles takes seconds or minutes, while the at-

mosphere evolves and moves, distorting the measurements. Acoustic volume-imaging systems are less developed (Wilson et al., 2001).

UHF spaced-antenna and VHF beam-steering radars both exist for volume imaging. UHF systems are generally smaller, more transportable, and sensitive to insects and birds, while VHF systems offer higher power and work in all weather; the two are complementary, together benefitting from subtly different views of the same atmosphere. Since the 1970s, these radars measure vertical profiles of wind vector, backscatter power, turbulence intensity, and sometimes temperature, humidity, momentum flux and rain rate, running continuously unattended for days or months. VHF volume-imaging measurements here show stratiform rain clouds, shallow boundary-layer convection, a freak wave, bird echoes, and deep convection.

The Middle and Upper atmosphere (MU) VHF radar, Fig. 1, is located 34.85° N 136.10° E near Shigaraki in Japan (Fukao et al., 1985). Such VHF radars can provide real-time data in extreme weather, such as thunderstorms and great storms (Crochet et al., 1990), be moveable (Czechowsky et al., 1984), measure within the boundary layer containing birds and insects (Vincent et al., 1998), with range resolution 75 m (Rüster et al., 1998) and beamwidth of 1° or less. Despite its name, the MU radar can measure as low as ~1 km above ground level (AGL), including the upper boundary layer, with a range resolution of 150 m, a beamwidth of 3.6° and peak power of 1 MW.

Figure 2 shows a three-dimensional view of the MU radar. Using a simple Doppler beam-swinging (DBS) method, the beam transmitted by the entire array switches direction every 400 μ s, volume-imaging an “inverted pyramid” of atmosphere every 6.55 s, revealing convective cells and turbulence as they move and evolve¹. Use of a DBS method has advantages; many years of literature on DBS 3 or 5-beam

¹Figure 2 shows 61 of the 64 beam directions; data from two beams at 30° off zenith are not used, also there is a duplicate vertical beam. Number of incoherent integrations is 1, coherent integrations 2, number of FFT points 128, aliasing velocity 31.5 m s⁻¹ and maximum data rate ~1 gigabyte hour⁻¹.

radar applies unchanged to DBS volume imaging, for instance algorithms to process spectra. Conventional 3 or 5-beam data are a subset of DBS volume-imaging data, and can be recovered by discarding $\sim 90\%$, to allow for a direct comparison with earlier studies. A similar beam pattern is used by Worthington et al. (2000) with time resolution about 10 times lower to study only backscatter statistics. For four volume-imaging case studies in Table 1, Fig. 3 shows the surface weather.

2 Observations

2.1 Rain

Figure 4 shows conventional height-time plots from a 5-beam 1357 MHz UHF radar, and the surface rain rate at the MU radar site during continuous light stratiform rain on the night of 27–28 February 2002. Radiosondes launched from the radar site at 21:17 and 03:10 JST, Fig. 4a, measure near 100% humidity in the lowest few kilometres. A UHF brightband at 1–2 km AGL in Fig. 4a is within the height range volume-imaged by MU VHF radar.

Figure 5 shows clear-air VHF echo power in sequences of horizontal slices through the rain clouds, near the UHF brightband. Line-of-sight velocity shows only a slight contamination from rain echoes of slightly greater power. The background wind is $\sim 20 \text{ m s}^{-1}$ and west-south-westerly. There are moving and evolving structures on a horizontal scale of several hundred metres, maybe turbulent eddies, with good continuity between consecutive slices. Figure 5 differs from the VHF echo-power model of Hocking et al. (1986) and Tsuda et al. (1997), which assumes maximum VHF aspect-sensitive power from near zenith, with a limiting case of isotropic power distribution; the direction of maximum echo power is very variable and often $> 10^\circ$ from zenith.

2.2 Shallow convection

Figure 6 shows horizontal slices through the daytime fair-weather convective boundary layer on 27 August 2001, as a convective cell (“thermal”) drifts across the radar. Surface weather in Fig. 3 is dry, $\sim 25^\circ \text{ C}$, with a large diurnal variation of wind speed consistent with convection. Radar echo-power maps show an evolving circular “smoke-ring” structure, with horizontal variation of tens of dB over a few hundred metres, caused by the humidity structure of the convective cell (Ludlam, 1980).

Line-of-sight velocity maps, consistent at first with a weak horizontally-uniform north-westerly wind, Fig. 6b, become very distorted with local strong winds, yet good continuity between adjacent maps suggests reliability. The three-dimensional structure of the three-dimensional vector wind field can also be extracted. One method is to assume some function to describe the three-dimensional nonuniform vector wind field, finding a best fit to the line-of-sight velocities, with parameters of the fit giving U , V , W , gradients and

divergences. This velocity-azimuth-display (VAD) type of method is often used for scanning Doppler weather radar.

Another method assumes little about the overall form of the nonuniform wind, except for locally uniform wind between neighbouring radar beams, then using trigonometry to extract the three-dimensional vector wind field (Mead et al., 1998; Pollard et al., 2000). Sato and Hirota (1988) show that wind structures of small horizontal scale compared to radar beam separation can give spurious values for U , V , W ; however, they were measuring in the stratosphere, where the horizontal distance between diverging off-zenith beams is larger than in the lower troposphere. The wind vector at each height level in Fig. 2 might be assumed to be horizontally uniform over the small region spanned by each group of three beams, rather than over the whole pattern of beams, a variation on the usual uniform-wind assumption used in 3 or 5-beam wind profiling. The assumption can be checked qualitatively since measured U , V , W should usually be horizontally uniform, or any small-scale wind structures should appear sensible as they drift through the radar imaging volume, despite being measured by beams at different angles. For each three-beam group of the triangulation of Fig. 2, with zenith angles θ_1 , θ_2 , θ_3 from vertical, and azimuth angles ϕ_1 , ϕ_2 , ϕ_3 clockwise from the north, measuring line-of-sight velocities r_1 , r_2 , r_3

$$\begin{pmatrix} r_1 \\ r_2 \\ r_3 \end{pmatrix} = \mathbf{A} \cdot \begin{pmatrix} U \\ V \\ W \end{pmatrix} \quad (1)$$

where

$$\mathbf{A} = \begin{pmatrix} \sin \theta_1 \sin \phi_1 & \sin \theta_1 \cos \phi_1 & \cos \theta_1 \\ \sin \theta_2 \sin \phi_2 & \sin \theta_2 \cos \phi_2 & \cos \theta_2 \\ \sin \theta_3 \sin \phi_3 & \sin \theta_3 \cos \phi_3 & \cos \theta_3 \end{pmatrix} \quad (2)$$

and inverting (1) gives local zonal, meridional and vertical winds U , V , W ,

$$\begin{pmatrix} U \\ V \\ W \end{pmatrix} = \mathbf{A}^{-1} \cdot \begin{pmatrix} r_1 \\ r_2 \\ r_3 \end{pmatrix}, \quad (3)$$

for each group of 3 beams. Biases caused by aspect sensitivity (Hocking et al., 1986) and spatial gradient of echo power can be corrected, using effective instead of nominal beam angles in (2), which can be calculated since the three-dimensional echo power distribution is measured directly.

Figure 7 shows a volume-imaged convective updraught, in a sequence of 20 images lasting 2.2 min, from the second row of Fig. 6. Wind vectors in Fig. 7b and e are binned into 4×4 and 3×5 grids, respectively. Horizontal slices Fig. 7a–c appear similar to results of Mead et al. (1998) and Pollard et al. (2000), despite the use of DBS and VHF instead of spaced antenna and UHF. The pattern of converging horizontal wind and upward vertical wind within the thermal shows continuity as it moves through the radar imaging volume, despite being measured by beams at a variety of angles. Spectral width variations in Fig. 7c, showing patchy turbulent regions in the moving thermal, could be corrected for beam and shear broadening (Nastrom, 1997), although background wind is



Fig. 1. Aerial photograph of the MU radar, near Shigaraki in the Kinki Region of Japan, soon after its construction in 1981–1983 with guest house and control room at top left.

Table 1. List of case studies.

Date	Height range AGL (vertical beam)
13:09 JST 26–10:32 JST 27 August 2001	1.275–3.525 km 16 levels
12:03 JST 13–08:12 JST 14 November 2001	1.275–5.925 km 32 levels
19:06 JST 27–07:52 JST 28 February 2002	0.975–5.625 km 32 levels
08:41 JST 15–16:03 JST 15, 08:02 JST 16–17:25 JST 16 July 2002	0.975–9.375 km 64 levels

only $\sim 2 \text{ m s}^{-1}$ at this time. There are some aspect sensitive echoes in the upper part of Fig. 7d, above the convection. Worthington et al. (2002) showed another case study on 26 August 2001, a convective downdraft in light rain, moving in roughly the opposite direction from Fig. 7, because the background wind, although weak, was from the opposite direction.

The accuracy of the standard 5-beam wind profilers in convective conditions can be studied, by sorting the beams of Fig. 2 into many groups of two symmetric pairs separated by 90° azimuth, for instance 6° north, south, east, west, where $U = (r_{6^\circ \text{E}} - r_{6^\circ \text{W}}) / 2 \sin 6^\circ$, $V = (r_{6^\circ \text{N}} - r_{6^\circ \text{S}}) / 2 \sin 6^\circ$, $W = (r_{6^\circ \text{N}} + r_{6^\circ \text{S}} + r_{6^\circ \text{E}} + r_{6^\circ \text{W}}) / 4 \cos 6^\circ$ and $r_{6^\circ \text{N}}$, $r_{6^\circ \text{S}}$, $r_{6^\circ \text{E}}$, $r_{6^\circ \text{W}}$ are line-of-sight velocities. Figure 8 shows results from 12 sets of four beams at 6° , 8° , 10° , 14° and 20° from zenith, since these are typical angles used by DBS wind profilers. Different groups of four beams should all give identical U , V , W in horizontally uniform wind field. However, nonuniform wind, as in Fig. 6b, causes disagreement with direct vertical-beam measurement of vertical wind in Fig. 8a and increased random error for horizontal wind, Fig. 8b, c, even if time-averaged for several minutes. Under these conditions, wind profiles by individual radiosondes could be unrepresentative but give no indication of any problem.

2.3 Freak wave

Freak waves on the ocean surface are known for sinking the largest ships (White and Fornberg, 1998). Whether any similar waves occur in the atmosphere is uncertain. Both the ocean and atmosphere are filled with a great spectrum of waves, tides, instabilities and turbulence, yet freak waves are

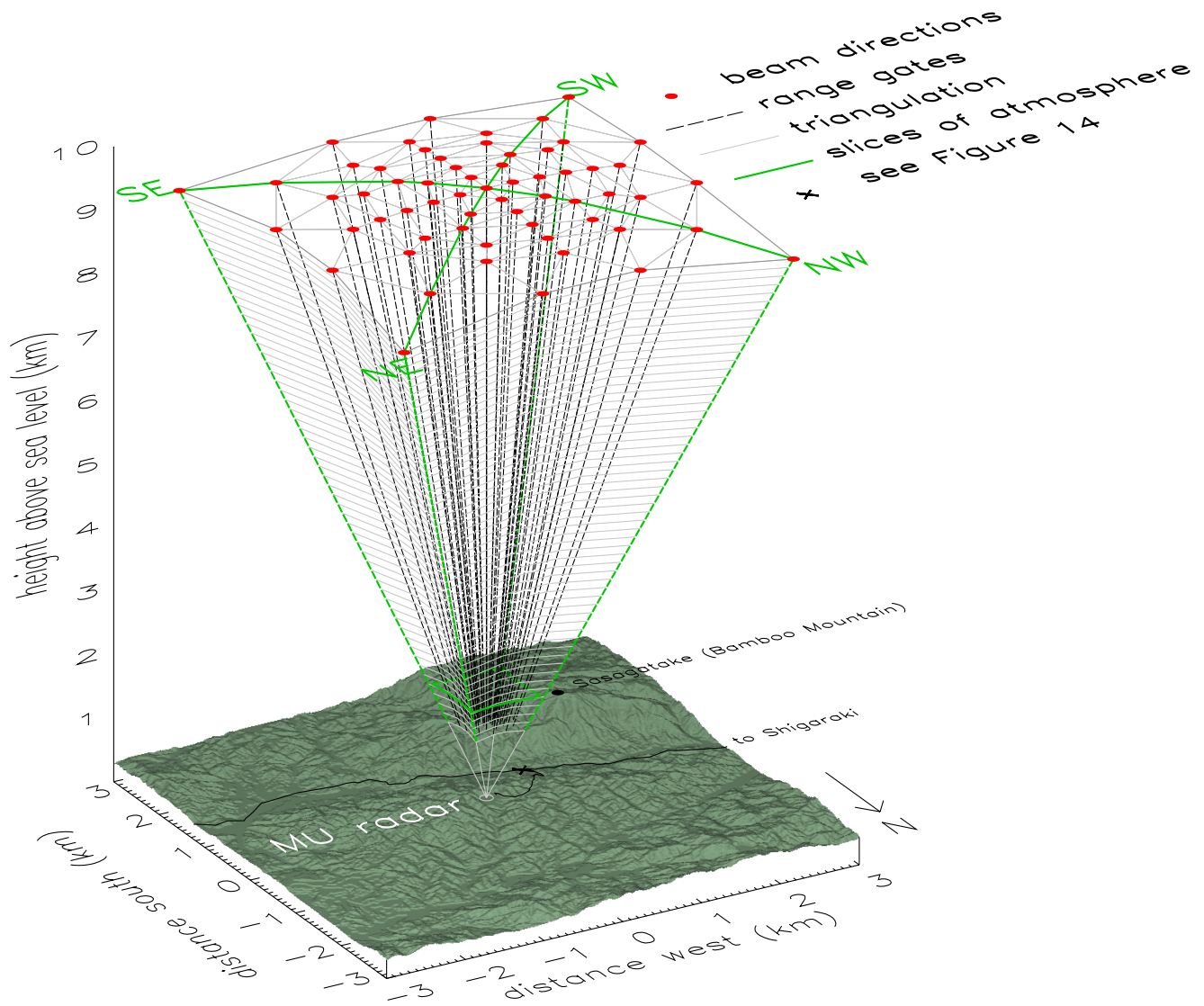


Fig. 2. Three-dimensional view of MU radar transmitting in volume-imaging mode, to scale. Land height is 210–740 m a.s.l. and the radar is 385 m a.s.l. Green lines show horizontal and vertical slices plotted in Figs. 5, 6, 7, 9, 10 and 11.

different – isolated, large, rare, short-lived and consequently difficult to study or forecast.

Figure 9 shows a sequence of atmospheric slices; similar to smoke or fog drifting in air, isotropic VHF backscatter acts as a useful tracer of air motion, except that in the lower troposphere it primarily shows humidity (Tsuda et al., 2001). An isolated internal wave over 1 km tall appears, overturns and dissipates, its lifetime about five minutes. Its appearance is rather similar to a large ocean breaker near a beach.

Trains of Kelvin-Helmholtz instabilities and gravity waves have been observed in the lower atmosphere for many years (Hicks and Angel, 1968), however, this wave is isolated and without any classic “cat’s eye” structure. Although it may instead be a large convective instability distorted in wind shear, its precise origin remains unclear. Typhoon Halong was located 600 km away; however, that may be a coincidence.

Concerning the plausibility of freak waves in the atmosphere as well as in oceans, there could be evidence since aircraft encounter unexpected small-scale clear-air motion even above the oceans, where the troposphere and stratosphere are relatively calm. The probability of this is low but nonzero, and the explanation uncertain, so atmospheric freak waves remain a possibility.

The volume of atmosphere visualised is only 80 km³ and at one location, but by continuous measurement for years, a climatology of such waves can be compiled – freak waves may be much larger and of a different type than this example. Also, measurement height can be extended to the tropopause region.

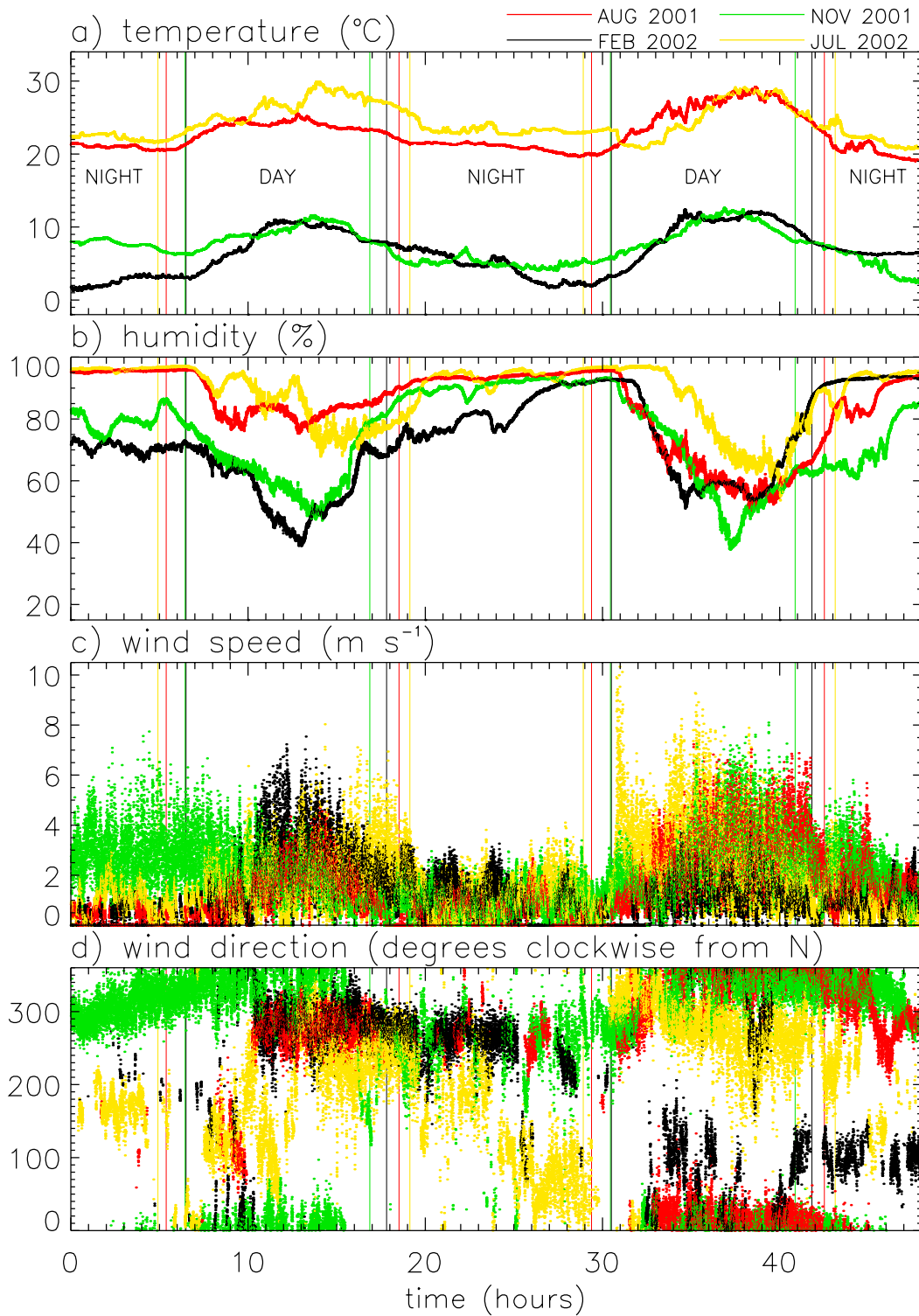


Fig. 3. Surface weather at the MU radar site, for four 2-day periods containing the four case studies in Table 1. Each dot is a 5-s time average. Vertical lines show sunrise and sunset times.

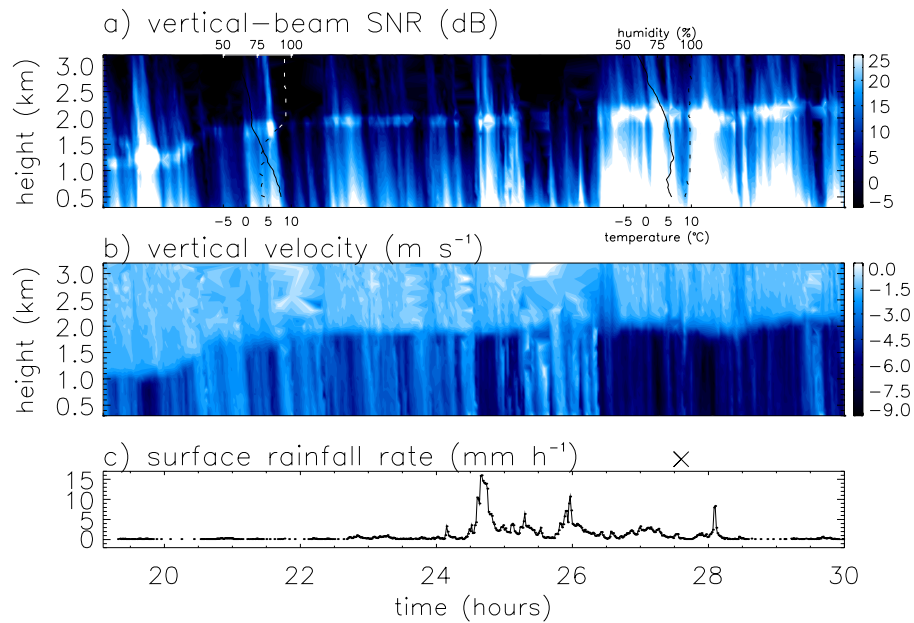


Fig. 4. Measurements during night of 27–28 February 2002, co-located with MU radar. (a, b) Conventional height-time plots from a 1357 MHz boundary-layer radar. (a) vertical-beam signal-noise ratio with brightband at 1–2 km AGL. Overplotted lines are relative humidity (dotted lines, upper scale, units of %) and temperature (solid lines, lower scale, units of °C) from radiosondes launched 2117 and 0310 JST. (b) Vertical velocity showing fall speed of precipitation increasing below brightband. (c) Surface rain rate; dots near 0 mm h⁻¹ show drizzle, zero rain rate is not plotted, and the time of Fig. 5 is marked as ×.

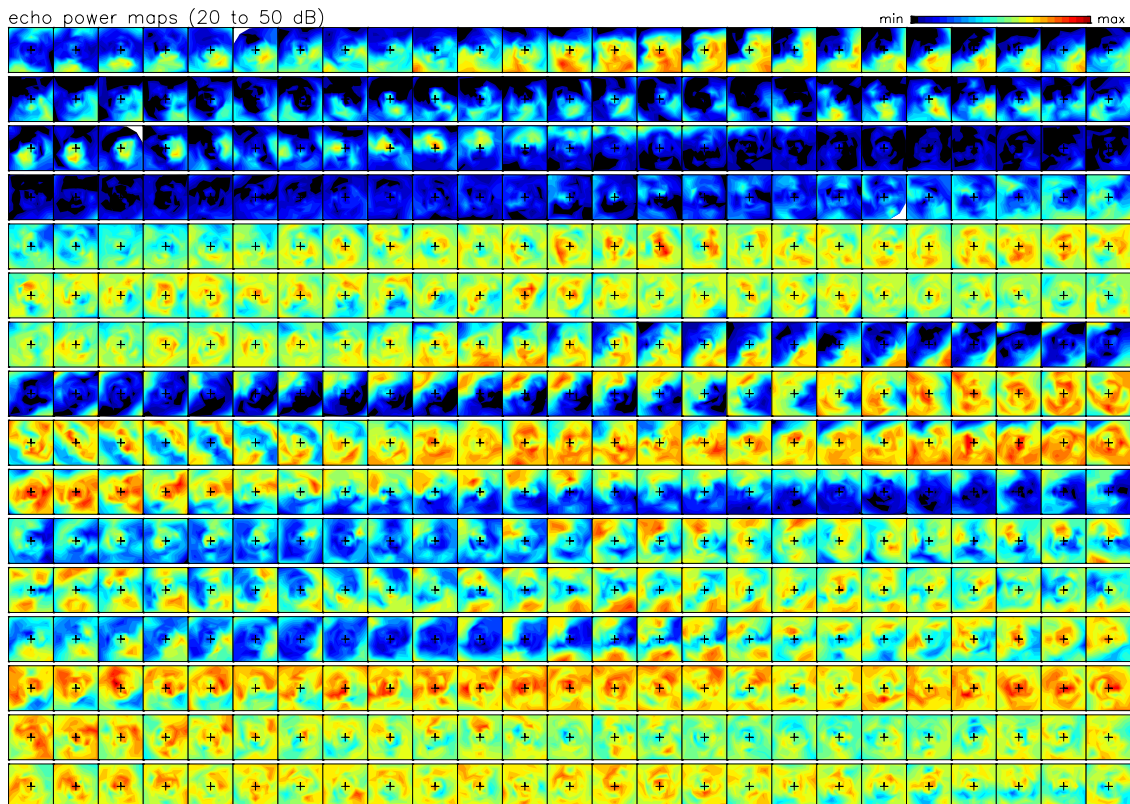


Fig. 5. Horizontal slices of clear-air echo power in rainy conditions, 1.725 km AGL, starting 03:37 JST 28 February 2002. Time step is 6.55 s, north is at the top of each 860×860 m slice and + marks zenith.

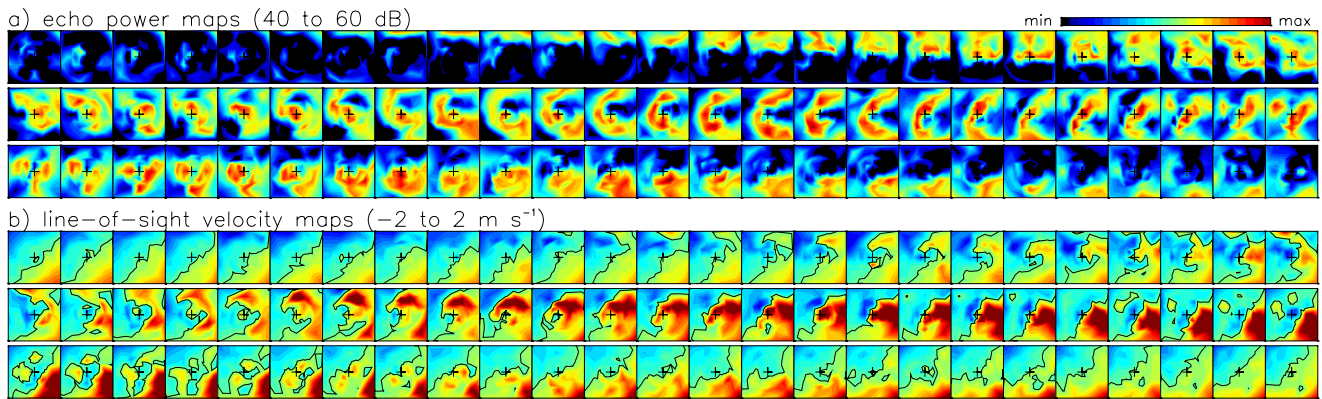


Fig. 6. Horizontal slices of clear-air (a) echo power and (b) line-of-sight velocity, 1.425 km AGL, starting 09:56 JST 27 August 2001 as a convective cell moves across. Zero wind contour is overlotted in (b). Time step is 6.55 s starting at top-left corner, north is at the top of each 700×700 m slice and + marks zenith.

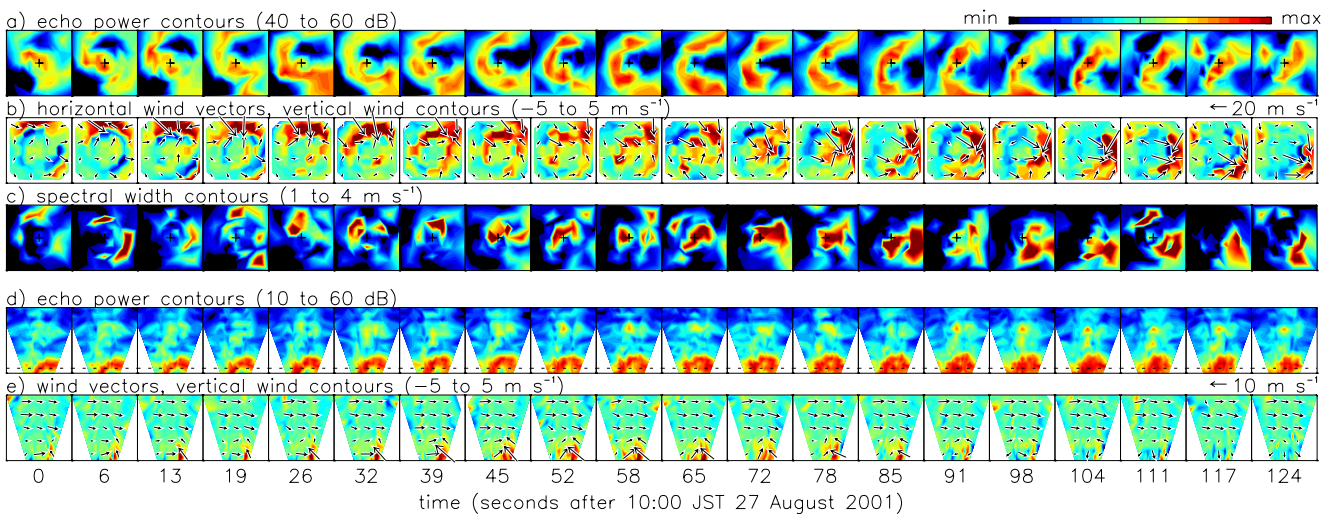


Fig. 7. (a-c) horizontal and (d, e) vertical SW-NE slices of data in Fig. 6. Plots are (a, d) echo power, (b, e) vertical-wind contours with horizontal-wind vectors overlotted, (c) spectral width. Vertical slices are 2 km across and 1.275–3.275 km AGL, horizontal slices are 700×700 m. Dotted line in d) shows the height of horizontal slices (a-c). Vertical component of wind vectors in (e) is multiplied ×3 for clarity.

2.4 Bird echoes

Examination of many thousands of volume images reveals small high-power echoes, that move near-horizontally with a speed and direction different from the background wind. Figure 10 shows three sequences of dot echoes on 13–14 November 2001. In Figs. 10a, b, c, the dots move at 25 m s⁻¹ to 70° clockwise from north, 8 m s⁻¹ to 220°, or a few m s⁻¹ north and then south, respectively. However, the background wind is ~10–12 m s⁻¹, toward 90° in Fig. 10a, b and 110° in Fig. 10c, so the dots are moving parallel and faster than the wind, up wind, and changing direction in Figs. 10a, b, c, respectively. Dot echoes were not observed in rainy weather on 27–28 February 2002 (Sect.2.1).

Dot echoes have been attributed to lumps of water vapour and/or turbulence, or birds. For the first time, volume-imaging allows their three-dimensional motion to be tracked. Patches of turbulence and water vapour are usually transported at the same speed and direction as the background wind, so this seems inconsistent with Fig. 10. Gravity waves can move at large angles to the wind and perturb radar echoes, but the dot echoes are isolated and not wave-like. Aircraft cause very strong echoes, but echo power in Fig. 10 is comparable to that of clear air or rain. Also, the speed of the dots relative to the wind is near or below the stall speed of most fixed-wing powered aircraft. Sunset and sunrise are at 16:52 JST, 13 November and 06:28 JST, 14 November, so the echoes are at night; this seems to rule out gliders. The

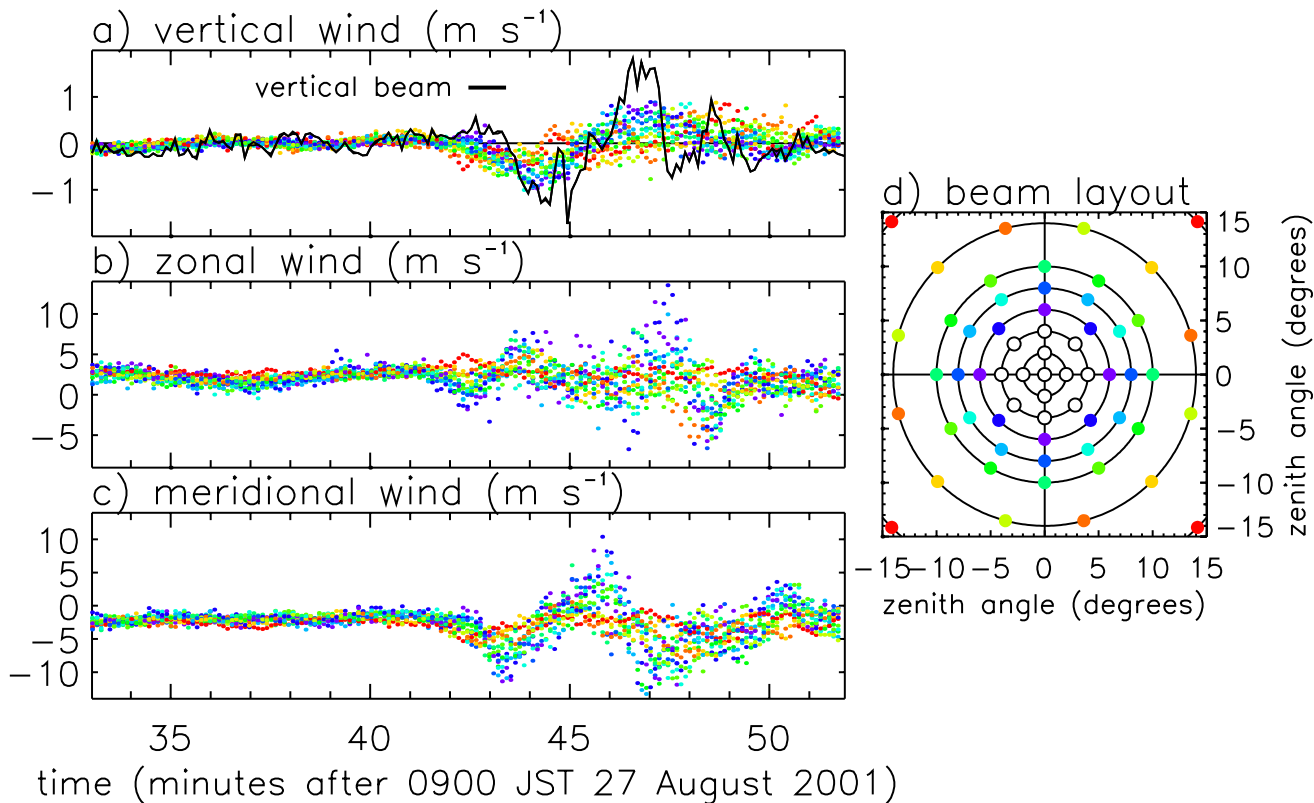


Fig. 8. (a) Vertical, (b) zonal and (c) meridional wind at 1.425 km AGL from (d) 12 sets of four beams. A convective cell passes through at ~09:42–09:52 JST. Solid line in (a) shows two (overlapping) vertical-beam measurements of vertical wind as a reference.

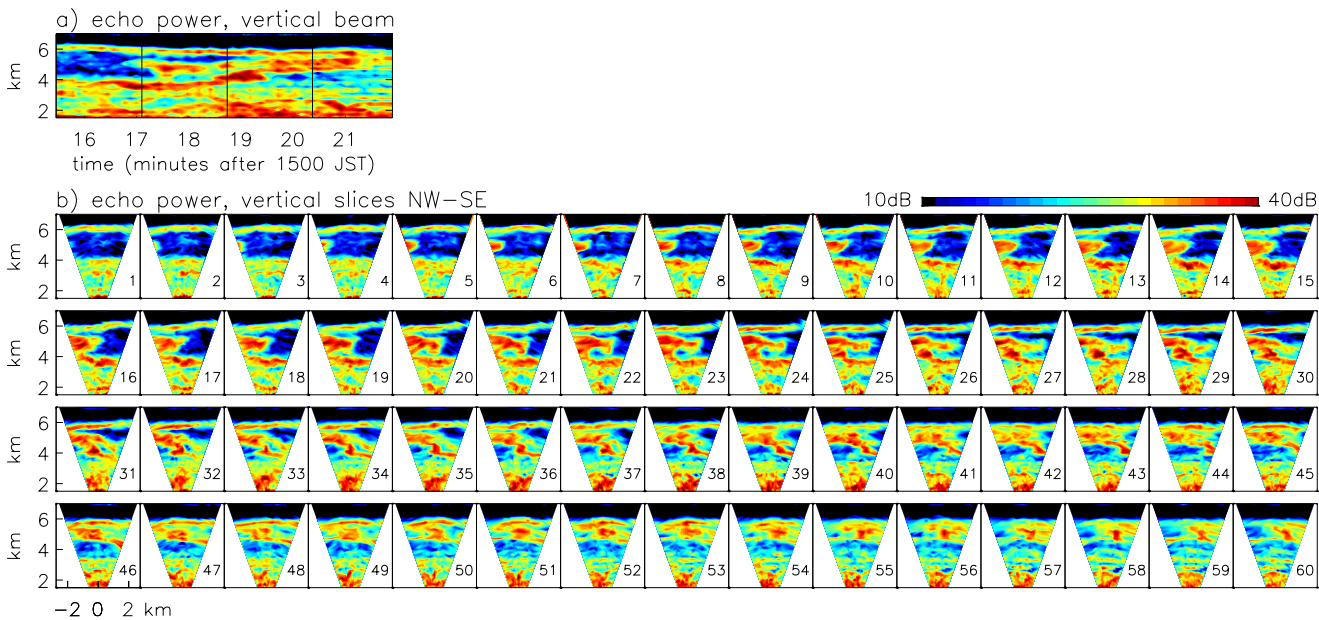


Fig. 9. (a) Height-time plot of vertical-beam echo power on 16 July 2002. (b) Vertical slices of echo power in NW-SE azimuth, numbered 1–60, for same time and height as (a). Vertical and horizontal axes are both 5.5 km and time step 6.55 s. A 1-km tall breaking wave moves southeast above the radar at 5 km AGL, overturning in plots 20–25.

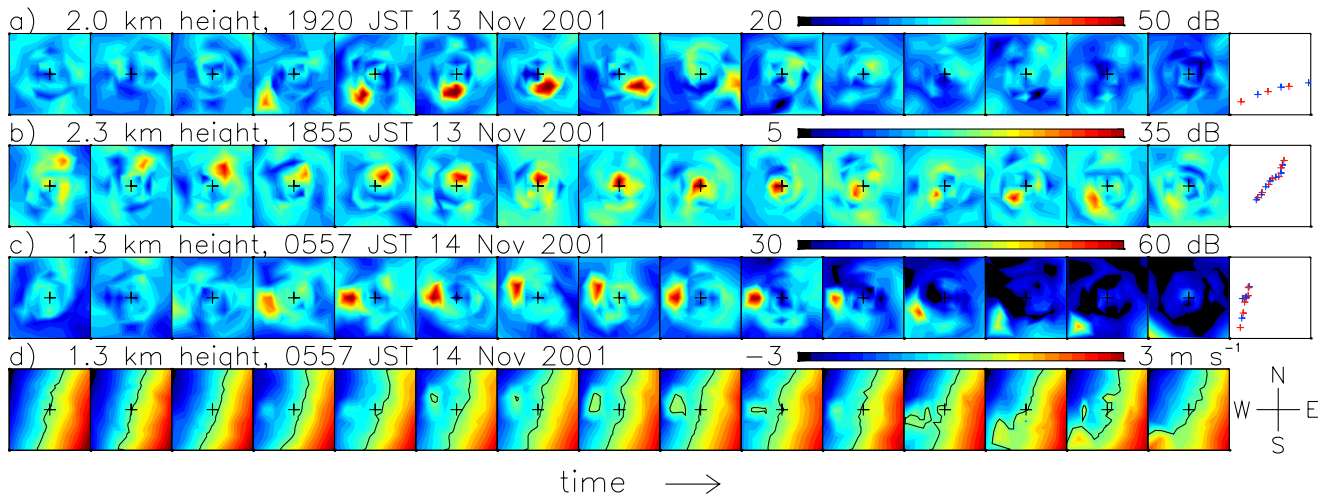


Fig. 10. Horizontal slices of (a)–(c) echo power and (d) line-of-sight velocity for dot echoes moving (a) downwind (b) across and slightly upwind and (c, d) changing direction. Widths and time steps are (a) 1000 m, 6.55 s, (b) 1150 m, 6.55 s and (c, d) 650 m, 13.1 s. Last plots in (a)–(c) summarise the dot trajectories. Zero contour is overplotted in (d).

echoes have small vertical extent and move horizontally, unlike rain, yet their Doppler spectra appear similar to clear air or rain echoes. After eliminating other possibilities, and given the height and speed of motion, it seems that small VHF dot echoes are caused by birds.

2.5 Deep convection

Figures 11–13 show deep convection in the last minute of experiment time on 16 July 2002, a few hours before sunset at 19:10 JST. A vertical-beam height-time plot in Fig. 11a appears uneventful, and vertical SW–NE and NW–SE slices in Figs. 11b, c at first show only layers of isotropic high power, some tilted $\sim 5^\circ$ from horizontal, for example, near 6 km AGL in plots 1–30 of Fig. 11b.

In plots 70–90 of Fig. 11b, c, complex structures appear with large vertical and horizontal gradients of echo power. One region of high echo power, 3–4 km AGL in plots 75–90 of Fig. 11b, c, matches the large downward motion in Fig. 11d. Doppler spectra in Fig. 12 show that this downward motion is a localised precipitation echo, more powerful than a clear-air echo, although no surface precipitation was recorded at the MU radar.

Because precipitation and clear-air echoes are mostly separate in Fig. 12, the clear-air echo can be peak-tracked up from ~ 2 km AGL, assuming other high-power echoes are caused by precipitation, rather than more complex processing (Rao et al., 1999). Figure 13 shows a three-dimensional view of clear-air and precipitation echoes, volume-imaged independently. Data in Fig. 13 have also been visualised in 3-D using a virtual reality system (Fakespace Immersadesk R2) at University of Wales. Although the deep convection in Figs. 11–13 occurred unnoticed, Figs. 14a, c, e, f show a similar deep convection event one day earlier, photographed

from location \times in Fig. 2. Tropical convection could also be volume imaged, ideally by a future equatorial radar, with even better transmitter power and DBS beam-switching capability than the MU radar (BPP Teknologi, 1990).

3 Conclusions

All-weather volume imaging radar is demonstrated for the first time under conditions ranging from summer fair-weather convection, to rain and thick clouds in winter. Convective cells and turbulent eddies are visualised as they move through the volume of radar beams. The echo power distribution in convection and rain is very variable with time and horizontal distance, unlike standard aspect-sensitivity models. Clear-air and rain echoes in deep convection can be visualised independently in three dimensions. Dot echoes can be tracked and are consistent with birds.

Acknowledgements. The work was funded by a research fellowship from Japan Society for the Promotion of Science, at Fukao Laboratory, Kyoto University, Uji, Kyoto, Japan. The following are noted: M. Z. Haraszti, S. Fukao, N. Fukuzaki, M. Yamamoto, H. Hashiguchi, S. Saito, T. Yokoyama, Y. Ozawa, M. Oyamatsu, M. Hirono, N. Kawano, M. Teshiba, M. K. Yamamoto, A. Mousa, H. Luce, G. Hassenpflug, L. Thomas, R. R. Anderson, P. T. May, K. Mohan, M. Marumoto, J. Furumoto. English-language versions of licensed Japanese-language software were downloaded from Morpheus (Fasttrack), Grokster and Edonkey file-sharing networks. Land data in Fig. 2 were digitised from maps of Geographical Survey Institute. The MU radar, owned by RASC Kyoto University, is designed, built and maintained by Mitsubishi Electric Corporation.

Topical Editor O. Boucher thanks two referees for their help in evaluating this paper.

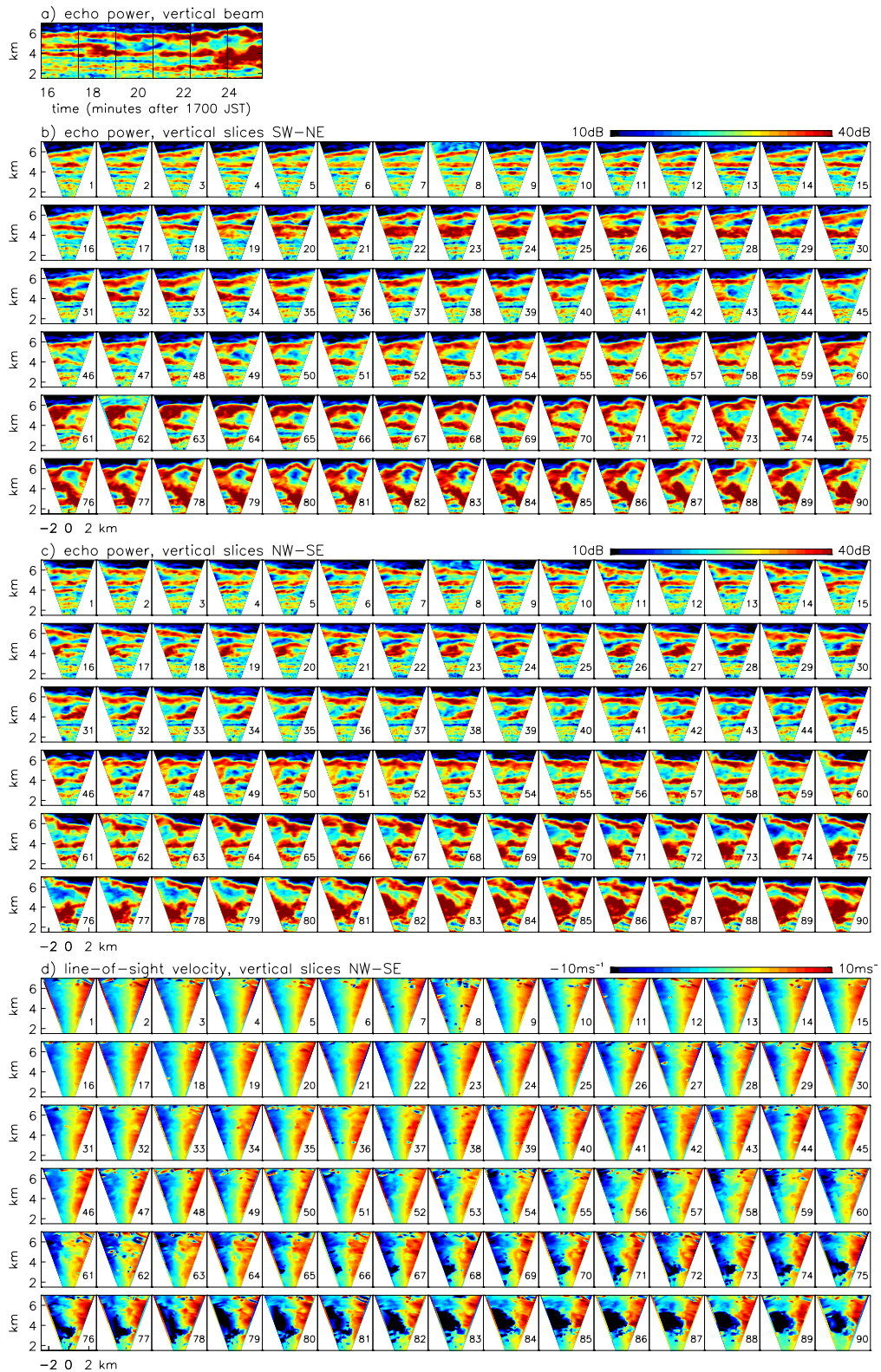


Fig. 11. (a) Height-time plot of vertical-beam echo power on 16 July 2002. (b)–(d) vertical slices of (b) echo power in SW–NE azimuth (c) echo power in NW–SE azimuth and (d) line-of-sight velocity in NW–SE azimuth, numbered 1–90, for same time and height as (a). Vertical and horizontal axes are 5.5 km and time step 6.55 s. Large downward motion in plots 70–90 is caused by precipitation. Vertical lines in (a) show edges of rows in (b), (c) and (d).

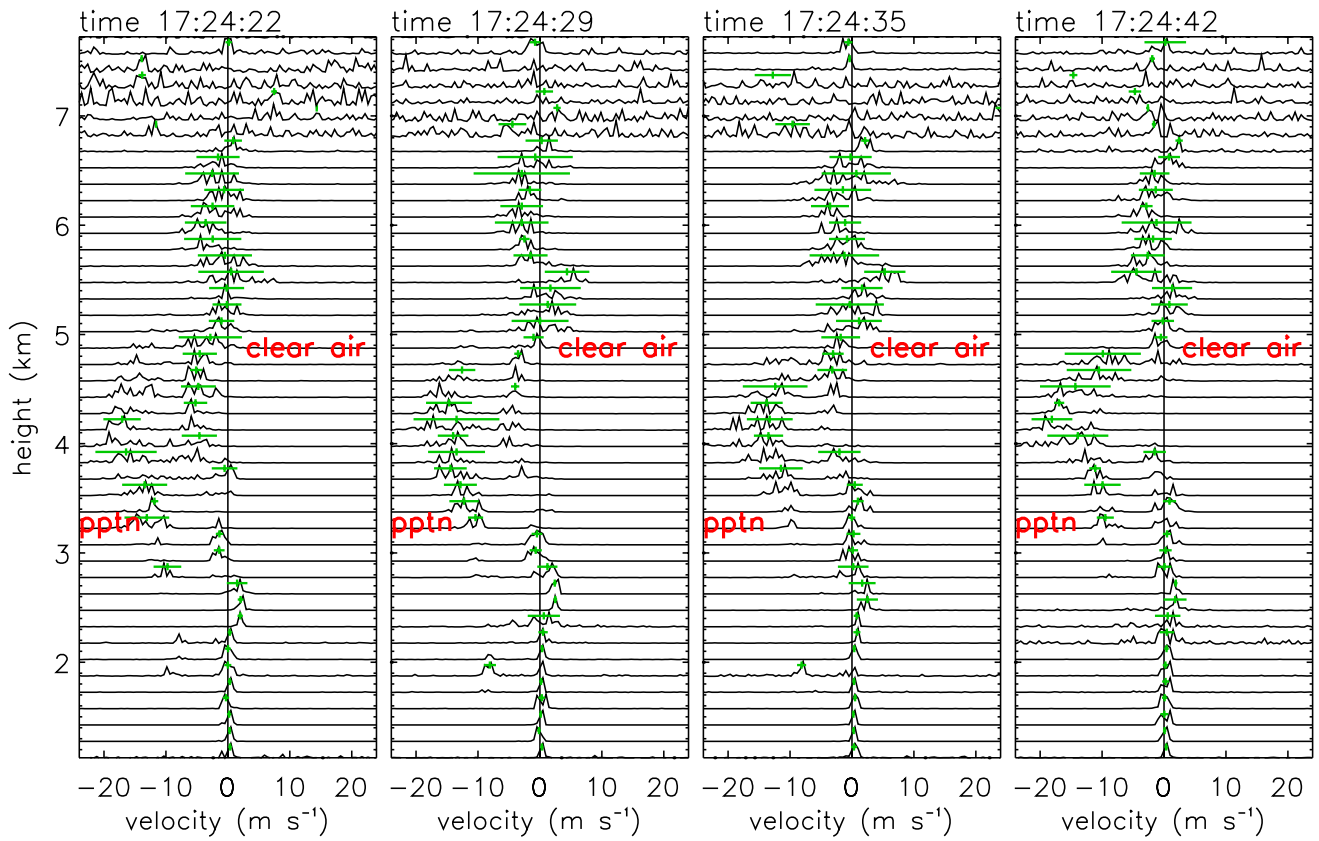


Fig. 12. Vertical-beam Doppler spectra for plots 81–84 of Figs. 11(b, c, d). Green lines show Doppler shift and spectral width of most powerful echo at each range gate, usually clear air or precipitation.

MU RADAR volume imaging mode, 16 July 2002

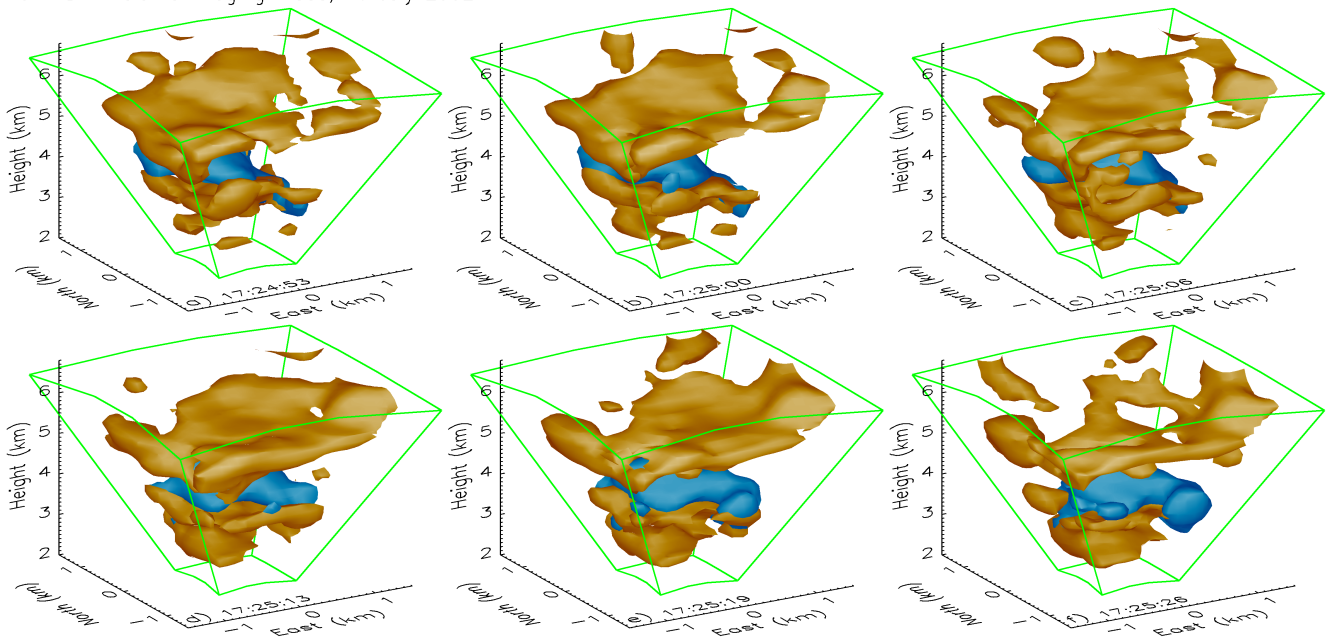


Fig. 13. (a)–(f) Three-dimensional views of deep convection for plots 85–90 of Figs. 11b, c. Red shading is clear-air echo, 35 dB isosurface; blue shading is precipitation echo, 40 dB isosurface; green lines are edges of volume imaged in Fig. 2.



Fig. 14. Photographs from location \times in Fig. 2 at (a) 13:20– (f) 13:40 JST 15 July 2002, showing (a, c, e, f) deep convection in the distance beyond a rice field and forest, and (b, d) Kelvin-Helmholtz billows.

References

- BPP Teknologi: The equatorial radar, Agency for the Assessment and Application of Technology (Badan Pengkajian dan Penerapan Teknologi), Jalan M. H. Thamrin No. 8, Jakarta 10 340, Indonesia (available from: N. Fukuzaki, RASC, Kyoto University, Uji, Kyoto 611–0011, Japan), 1990.
- Crochet, M., Cuq, F., Ralph, F. M., and Venkateswaran, S. V.: Clear-air radar observations of the great October storm of 1987. *Dyn. Atmos. Oceans*, 14, 443–461, 1990.
- Czechowsky, P., Schmidt, G., and Ruster, R.: The mobile SOUSY Doppler radar: Technical design and first results, *Radio Sci.*, 19, 441–450, 1984.
- Fukao, S., Sato, T., Tsuda, T., Kato, S., Wakasugi, K., and Makihira, T.: The MU radar with an active phased array system: 1. Antenna and power amplifiers, *Radio Sci.*, 20, 1155–1168, 1985.
- Grund, C. J., Banta, R. M., George, J. L., Howell, J. N., Post, M. J., Richter, R. A., and Weickmann, A. M.: High-resolution Doppler lidar for boundary layer and cloud research, *J. Atmos. Oceanic Technol.*, 18, 376–393, 2001.
- Hicks, J. J. and Angel J. K.: Radar observations of breaking gravitational waves in the visually clear atmosphere, *J. Appl. Meteorol.*, 7, 114–121, 1968.
- Hocking, W. K., Ruster, R., and Czechowsky, P.: Absolute reflectivities and aspect sensitivities of VHF radio wave scatterers measured with the SOUSY radar, *J. Atmos. Terr. Phys.*, 48, 131–144, 1986.
- Ludlam, F. H.: *Clouds and storms: The behaviour and effect of water in the atmosphere*, Pennsylvania State University Press, 1980.
- Mead, J. B., Hopcraft, G., Frasier, S. J., Pollard, B. D., Cherry, C. D., Schaubert, D. H., and McIntosh, R. E.: A volume-imaging radar wind profiler for atmospheric boundary layer turbulence studies, *J. Atmos. Oceanic Technol.*, 15, 849–859, 1998.
- Nastrom, G. D.: Doppler radar spectral width broadening due to beamwidth and wind shear, *Ann. Geophys.*, 15, 786–796, 1997.
- Pollard, B. D., Khanna, S., Frasier, S. J., Wyngaard, J. C., Thomson, D. W., and McIntosh, R. E.: Local structure of the convective boundary layer from a volume-imaging radar, *J. Atmos. Sci.*, 57, 2281–2296, 2000.
- Rao, T. N., Rao, D. N., and Raghavan, S.: Tropical precipitating systems observed with Indian MST radar, *Radio Sci.*, 34, 1125–1139, 1999.
- Ruster, R., Nastrom, G. D., and Schmidt, G.: High-resolution VHF radar measurements in the troposphere with a vertically pointing beam, *J. Appl. Meteorol.*, 37, 1522–1529, 1998.
- Sato, K. and Hirota, I.: Small-scale gravity waves in the lower stratosphere revealed by the MU radar multi-beam observation, *J. Meteorol. Soc. Japan*, 66, 987–999, 1988.
- Schols, J. L. and Eloranta, E. W.: Calculation of area-averaged vertical profiles of the horizontal wind velocity from volume-imaged lidar data, *J. Geophys. Res.*, 97, 18 395–18 407, 1992.
- Tsuda, T., VanZandt, T. E., and Saito, H.: Zenith-angle dependence of VHF specular reflection echoes in the lower atmosphere, *J. Atmos. Sol.-Terr. Phys.*, 59, 761–775, 1997.
- Tsuda, T., Miyamoto, M., and Furumoto, J.-I.: Estimation of a humidity profile using turbulence echo characteristics, *J. Atmos. Oceanic Technol.*, 18, 1214–1222, 2001.
- Vincent, R. A., Dullaway, S., MacKinnon, A., Reid, I. M., Zink, F., May, P. T., and Johnson, B. H.: A VHF boundary layer radar:

- First results, *Radio Sci.*, 33, 845–860, 1998.
- White, B. S. and Fornberg, B.: On the chance of freak waves at sea, *J. Fluid. Mech.*, 355, 113–138, 1998.
- Wilson, D. K., Ziemann, A., Ostashev, V. E., and Voronovich, A. G.: An overview of acoustic travel-time tomography in the atmosphere and its potential applications, *Acustica*, 87, 721–730, 2001.
- Worthington, R. M., Palmer, R. D., Fukao, S., Yamamoto, M., and Astin, I.: Rapid variations in echo power maps of VHF radar backscatter from the lower atmosphere, *J. Atmos. Sol.-Terr. Phys.*, 62, 573–581, 2000.
- Worthington, R. M., Yamamoto, M., and Fukao, S.: Demonstration of all-weather volume-Doppler-imaging of the troposphere using the MU radar, Extended abstracts, 81st meeting of Meteorological Society of Japan, Sonic City, Omiya, Japan, 22–24 May 2002, 446, 2002.