

Co-occurrence of the foraminifer *Mohlerina basiliensis* with *Bacinella–Lithocodium* oncoids: palaeoenvironmental and palaeoecological implications (Late Oxfordian, Swiss Jura)

STÉPHANIE VÉDRINE

Department of Geosciences – Earth Sciences, University of Fribourg, Pérolles, 1700 Fribourg, Switzerland (Current address: School of Earth and Environment, University of Leeds, Leeds LS2 9JT, UK (e-mail: steph_vedrine@yahoo.fr)

ABSTRACT – The stratigraphical and spatial distribution of the foraminifer *Mohlerina basiliensis* and *Bacinella–Lithocodium* oncoids was studied in the lagoonal deposits of the oncoid-rich Hauptmumienbank Member from the Swiss Jura Mountains (Late Oxfordian, NW Switzerland). *Mohlerina basiliensis* has a double-layered wall structure (thick outer hyaline-radial calcite layer with a lamellar structure and thin inner microgranular calcite layer) and is preferentially found in low-energy facies and associated with normal-marine bioclasts and *Bacinella–Lithocodium* oncoids. The distribution of *Mohlerina basiliensis* is relatively patchy. The ‘distal’ platform facies present a higher abundance and a more extensive stratigraphic occurrence of this foraminifer. The timing of the ecological evolution is given by the sequence- and cyclostratigraphic framework and illustrates the stepwise flooding of the platform. *Bacinella–Lithocodium* oncoids have diameters of a few millimetres to several centimetres and are composed of an alternation of *Bacinella–Lithocodium* meshwork and thin micritic laminae. They are found preferentially in low-energy facies (bioclastic wackestones) of open lagoons. The distribution of *Bacinella–Lithocodium* oncoids through time and space is also patchy; however, they appear more abundantly in ‘distal’ platform facies. This study reveals the co-occurrence of *Mohlerina basiliensis* and *Bacinella–Lithocodium* oncoids and thus suggests similar environmental conditions.

KEYWORDS: *benthic foraminifer, Bacinella–Lithocodium oncoids, carbonate platform, Late Oxfordian, Swiss Jura Mountains*

INTRODUCTION

Benthic foraminifera have a great potential as indicators of depositional environments in the geological past (e.g. Smith, 1955; Martin, 1988; Cannariato *et al.*, 1999). These bottom-dwelling organisms occur in a wide range of marine environments. The foraminifer *Mohlerina basiliensis* ranges from the Middle–Late Bathonian to the Valanginian and is usually found from the internal platform down to the slope (Flügel, 2004). Oncoids are also used as palaeoenvironmental proxies for ancient carbonates (e.g. Peryt, 1983). They are irregularly shaped carbonate grains formed by microbial activity: trapping of particles by organic filaments and/or calcified filaments forming an anastomosing pattern. Their morphology (sphericity) and surface morphology indicate the rolling intensity on the seafloor and thus the degree of wave or current energy. The biotic composition and the encasing sediment reveal the trophic conditions, water energy and water depth that dominated during their formation (Védrine *et al.*, 2007). This study describes the main characteristics and the distribution of these two components (*Mohlerina basiliensis* and *Bacinella–Lithocodium* oncoids) encountered within a transgressive interval well defined by high-resolution sequence- and cyclostratigraphy.

GEOLOGICAL CONTEXT

The study area is located in the Swiss Jura Mountains of northwestern Switzerland (Fig. 1). In the Late Oxfordian, this region was a shallow-water carbonate platform (Fig. 2). At the beginning of the Bimammatum Ammonite Zone, an important lithological change is observed from the siliciclastic-dominated ‘Röschenz Member’ to the carbonate-dominated

‘Hauptmumienbank Member’ (Gygi & Persoz, 1986; Gygi *et al.*, 1998). The Röschenz Member is composed of marls and limestones, whereas the Hauptmumienbank Member presents

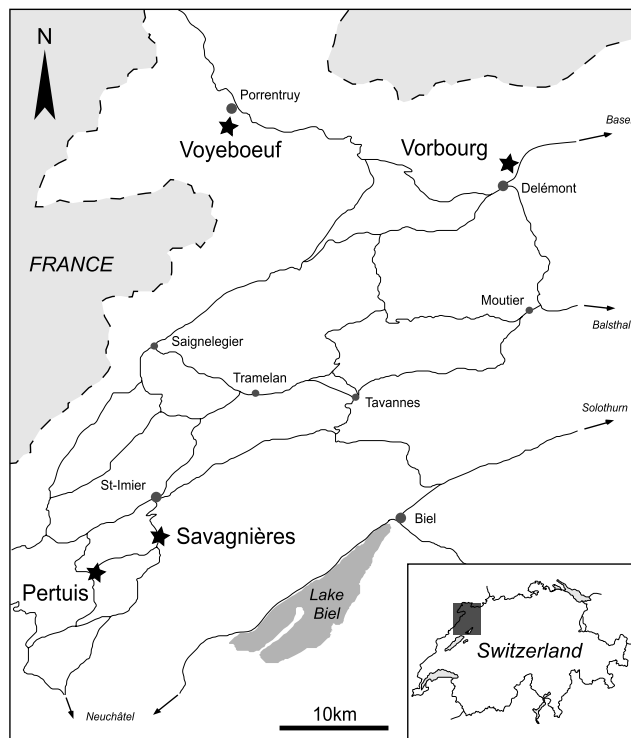


Fig. 1. Location of the four studied sections in the Swiss Jura Mountains (NW Switzerland).

http://doc.rero.ch

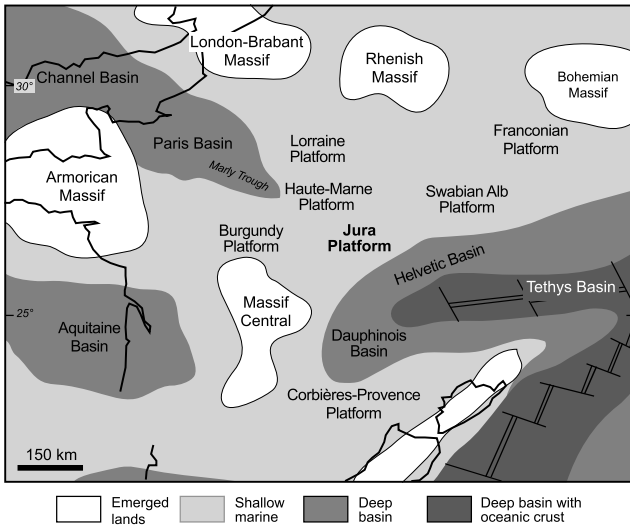


Fig. 2. Late Jurassic palaeogeography of the northern margin of the Tethys, including the Jura platform, the Paris Basin and the surrounding crystalline massifs (modified from Ziegler, 1988; Thierry *et al.*, 2000).

massive oncoïd-rich limestone beds (e.g. Gygi, 1992, 2000). This study concentrates on the latter member, which lies in the Semimammatum and Berrense Ammonite Subzones (Fig. 3; Gygi & Persoz, 1986). The studied interval corresponds to the transgressive part of the medium-scale Ox6+ sequence (Védrine

et al., 2007), which is found at the beginning of a second-order transgressive sea-level evolution and is interpreted as being formed in tune with a 400 ka orbital cycle (Strasser *et al.*, 1999).

MATERIAL AND METHODS

Four shallow-water carbonate platform sections (Voyeboeuf, Vorbourg, Savagnières, and Pertuis) were logged at a centimetre scale and densely sampled. Stacking pattern of beds, bed surfaces, facies and microfacies were examined in detail. Depositional environments were identified from the microfacies and from the semi-quantitative analysis of organic and inorganic components. These sedimentological observations were then interpreted in terms of sequence- and cyclostratigraphy. Small-scale and elementary depositional sequences were identified following the methodology of Strasser *et al.* (1999) and interpreted as 100 ka and 20 ka orbital cycles, respectively. Sequence boundaries (*sensu* Vail *et al.*, 1991) were placed at the shallowest facies, transgressive surfaces at a rapid facies change to deeper and/or more open-marine facies, and maximum floodings at the deepest or more open-marine facies.

Benthic foraminifera and oncoïds are relatively common in the studied sections. The main suborders of benthic foraminifera found in these lagoonal facies are Textulariina, Lagenina and Miliolina. However, this study concentrates only on *Mohlerina basiliensis*. This foraminifer occurs in small numbers and is distributed sparsely. *Mohlerina basiliensis* was found in only

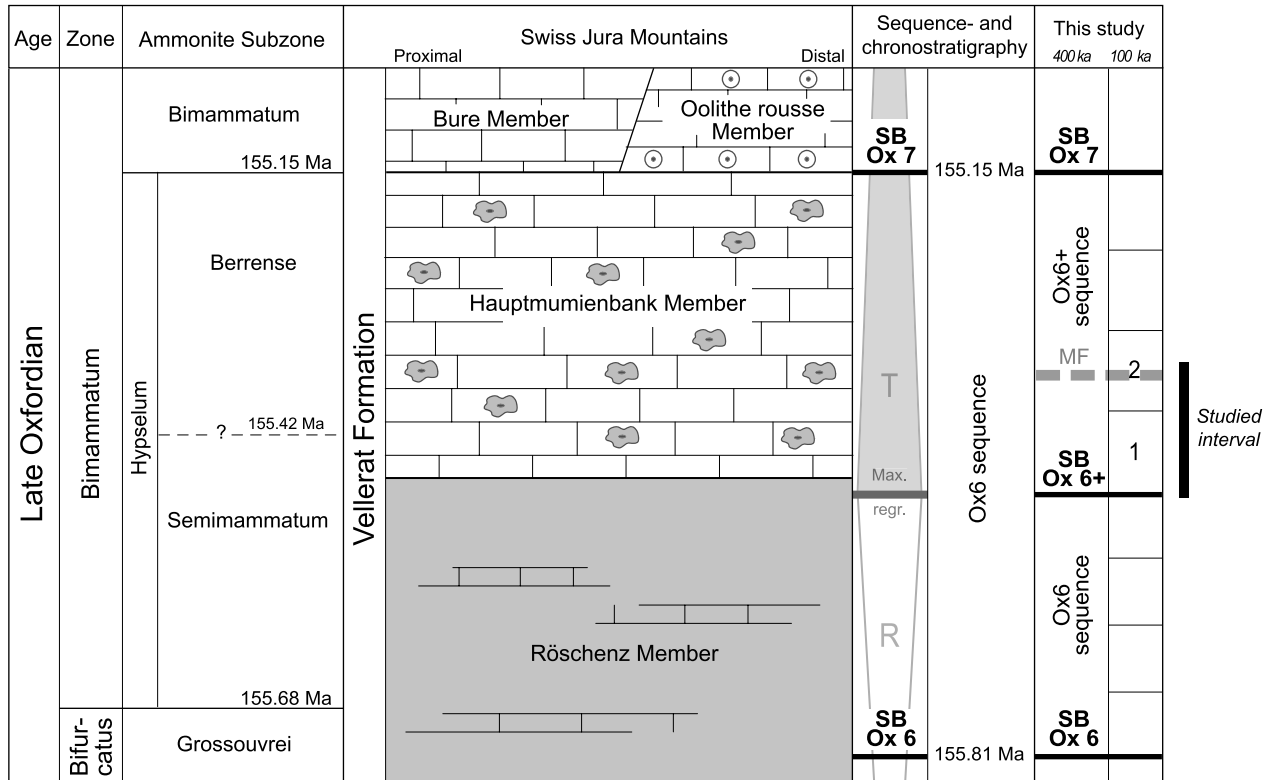


Fig. 3. Lithostratigraphical, biostratigraphical, and sequence-stratigraphical position of the Hauptmumienbank Member on the Swiss Jura platform (after Gygi & Persoz, 1986; Gygi, 1995, 2000; Hardenbol *et al.*, 1998). The studied interval corresponds to one and a half small-scale (100 ka) sequences between the sequence boundary of medium-scale (400 ka) sequence Ox6+ at the base of the Hauptmumienbank Member and the maximum flooding of the medium-scale sequence Ox6+. SB, sequence boundary; MF, maximum flooding; R, second-order regressive trend; T, second-order transgressive trend. Ages of ammonite subzone boundaries and of sequence boundaries according to Hardenbol *et al.* (1998).

40 of the 265 analysed thin sections. Its distribution thus appears to be linked to specific environmental factors. The absolute abundance of *Mohlerina basiliensis* was estimated by counting specimens per surface area in thin section. In the oncoid-rich Hauptmumienbank Member, two groups of oncoids are defined from thin section: micrite-dominated and *Bacinella–Lithocodium* oncoids (Fig. 4; Védrine *et al.*, 2007). Differences in size, shape, surface morphology and cortex configuration and composition were distinguished. Micrite-dominated oncoids are small (a few millimetres to 1 cm) with a smooth surface; they have a micritic cortex with regular or irregular laminations and are associated with a low-diversity fauna. *Bacinella–Lithocodium* oncoids are larger (a few millimetres to 5 cm) with a lobate surface and a cortex composed of micritic laminae and *Bacinella–Lithocodium* meshwork. This study focuses on the relative abundance of *Bacinella–Lithocodium* oncoids estimated in thin sections.

TAXONOMY

The benthic foraminifer *Mohlerina basiliensis*

Suborder **Rotaliina** Delage & Hérouard, 1896
 Family **Discorbidae** Ehrenberg, 1838
 Genus *Mohlerina* Bucur *et al.*, 1996

Mohlerina basiliensis (Mohler, 1938)
 (Pl. 1, figs 1–13)

- 1938 *Conicospirillina basiliensis* Mohler n. sp.: Mohler; 27, pl. 4, fig. 5.
 1991 *Conicospirillina basiliensis* Mohler: Darga & Schlagintweit; 214, pl. 2, fig. 5.
 1993 *Archaeosepta basiliensis* (Mohler) nov. comb.: Tasli; 60, pl. 3, figs 6–7.
 1996 *Mohlerina basiliensis* (Mohler) nov. comb.: Bucur *et al.*; 70, pl. 3, figs 3–6; pl. 4, figs 2–3, 5–9.
 1999 *Mohlerina basiliensis* (Mohler): Schlagintweit & Ebli; 400, pl. 6, figs 1–2; ?pl. 4, fig. 10.
 2000 *Mohlerina basiliensis* (Mohler): Dieni & Radoicic; figs 6a–d.
 2001 *Mohlerina basiliensis* (Mohler): Pop & Bucur; pl. 4, figs 6–7, 9.
 2003 *Mohlerina basiliensis* (Mohler): Gawlick *et al.*; pl. 2, figs 6–7.
 2004 *Conicospirillina basiliensis* Mohler: Flügel; pl. 69, fig. 6.
 2004 *Mohlerina basiliensis* (Mohler): Bucur *et al.*; pl. 3, figs 23–24.
 2004 *Mohlerina basiliensis* (Mohler): Serban *et al.*; pl. 4, figs 14–15.

Description. *Mohlerina basiliensis* is characterized by a plurilocular test, trochospirally enrolled, with a convex spiral side, a concave umbilical side and a secondarily thickened umbilical zone. Chambers have variable forms from oval-rounded to arched (semi-circular in thin section). *Mohlerina basiliensis* is composed of a double-layered wall with a thick outer hyaline-radial calcite layer with a lamellar structure and a thin inner microgranular calcite layer (Pl. 1, figs 1–13).

Remarks. All the observed specimens of *Mohlerina basiliensis* come from the Hauptmumienbank Member (Vellerat

Formation, Semimammatum and Berrense Ammonite Subzones, Late Oxfordian) from the Swiss Jura Mountains (NW Switzerland). *Mohlerina basiliensis* is found from the Middle–Late Bathonian to the Valanginian. The taxonomic position of this species is still in discussion. It was attributed previously to the Suborder Spirillina (e.g. Darga & Schlagintweit, 1991), then to the Suborder Involutinina, Family Ventrolaminidae and Genus *Archaeosepta* (Tasli, 1993) and, more recently, to the Suborder Rotaliina and the Family Discorbidae (e.g. Bernier, 1984; Bucur *et al.*, 1996). Based on its double-layered microstructure, Septfontaine (1981) attributed *Mohlerina basiliensis* to the Suborder Fusulinina. Since the Suborder Fusulinina became extinct during the Late Palaeozoic, Septfontaine (1981) named *Mohlerina* ‘Mesozoic Fusulinina’.

In the Hauptmumienbank Member, *Mohlerina basiliensis* is found mostly in oncoid-rich and bioclastic (brachiopods, echinoderms) wackestones, characterizing low-energy conditions and normal-marine conditions (Pl. 1, figs 12, 13). Sporadically, *Mohlerina basiliensis* appears in higher energy deposits such as ooid- and peloid-rich packstones (Pl. 1, fig. 11). Several authors found this foraminifer preferentially in high-energy facies from the internal platform to the slope, commonly associated with *Protopenneroplis* sp., *Trocholina* sp., *Pseudocyclammia* sp., *Andersenolina* sp., *Nautiloculina* sp., *Lenticulina* sp., *Valvulina* sp. and miliolids (Darga & Schlagintweit, 1991; Sasaran *et al.*, 2000; Schlagintweit & Ebli, 1999; Velić *et al.*, 2002; Gawlick *et al.*, 2003). Recently, Flügel (2004) and Velić *et al.* (2002) described *Mohlerina basiliensis* as characteristic of upper slope facies.

Bacinella–Lithocodium oncoids

These oncoids have diameters of a few millimetres up to 5 cm and display sub-elliptical shapes with lobate contours. The cortex is made of alternating organism-bearing and thin micritic laminations (Pl. 1, figs 12–14; Védrine *et al.*, 2007). The organism-bearing laminations are formed by two microencrusters: *Bacinella irregularis* (Radoicic, 1959; Fig. 5A) and *Lithocodium aggregatum* (Elliott, 1956; Fig. 5B). *Bacinella irregularis* is an enigmatic microencruster with an irregular micritic meshwork and interspaces filled with calcite spar (Fig. 5A). This structure is assumed to represent a cyanobacterial structure (Schmid, 1996; Shiraishi & Kano, 2004). *Lithocodium*, originally interpreted as a codiacean alga by Elliott (1956), is characterized by inner cavities and an aggregated outer wall with numerous alveoli probably containing symbiotic and photosynthetic algae (Schmid & Leinfelder, 1996). These authors thus attributed it to a loftusiacean foraminifer with an encrusting life habit. Recently, Cherchi & Schroeder (2006) interpreted *Lithocodium* as colonies of calcified cyanobacteria because of the absence of apertures connecting neighbouring cavities, and because of the very irregular form and arrangement of these hollows. The *Bacinella–Lithocodium* association characterizes lagoonal environments with oligotrophic conditions, low sediment accumulation rate, clear, oxygenated, shallow and normal-marine waters (Leinfelder *et al.*, 1993; Dupraz & Strasser, 1999; Immenhauser *et al.*, 2005).

Two types of *Bacinella–Lithocodium* oncoids were identified in the Hauptmumienbank deposits (Types 3 and 4 of Védrine *et al.*, 2007). Type 3 oncoids are composed of an alternation of

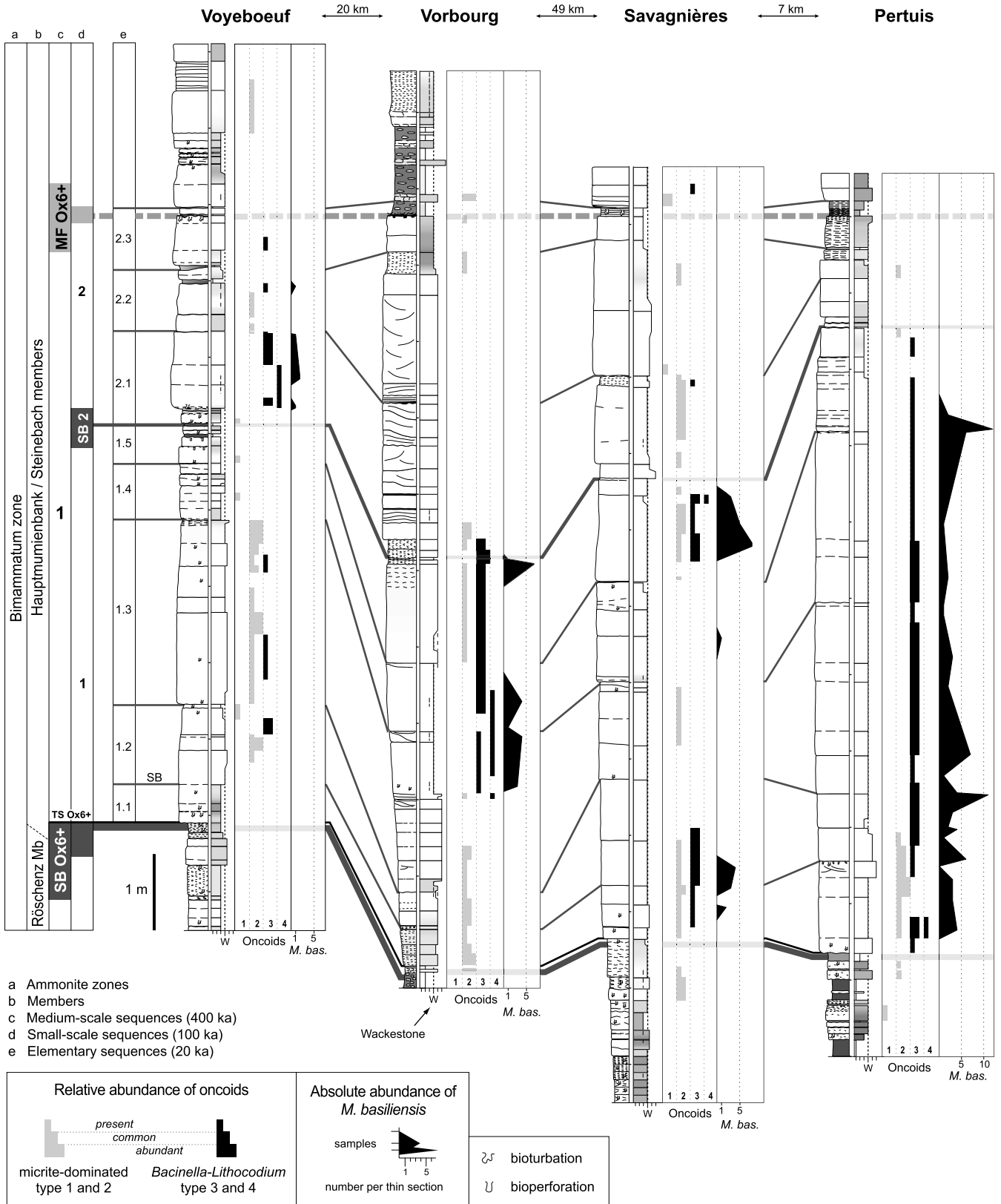
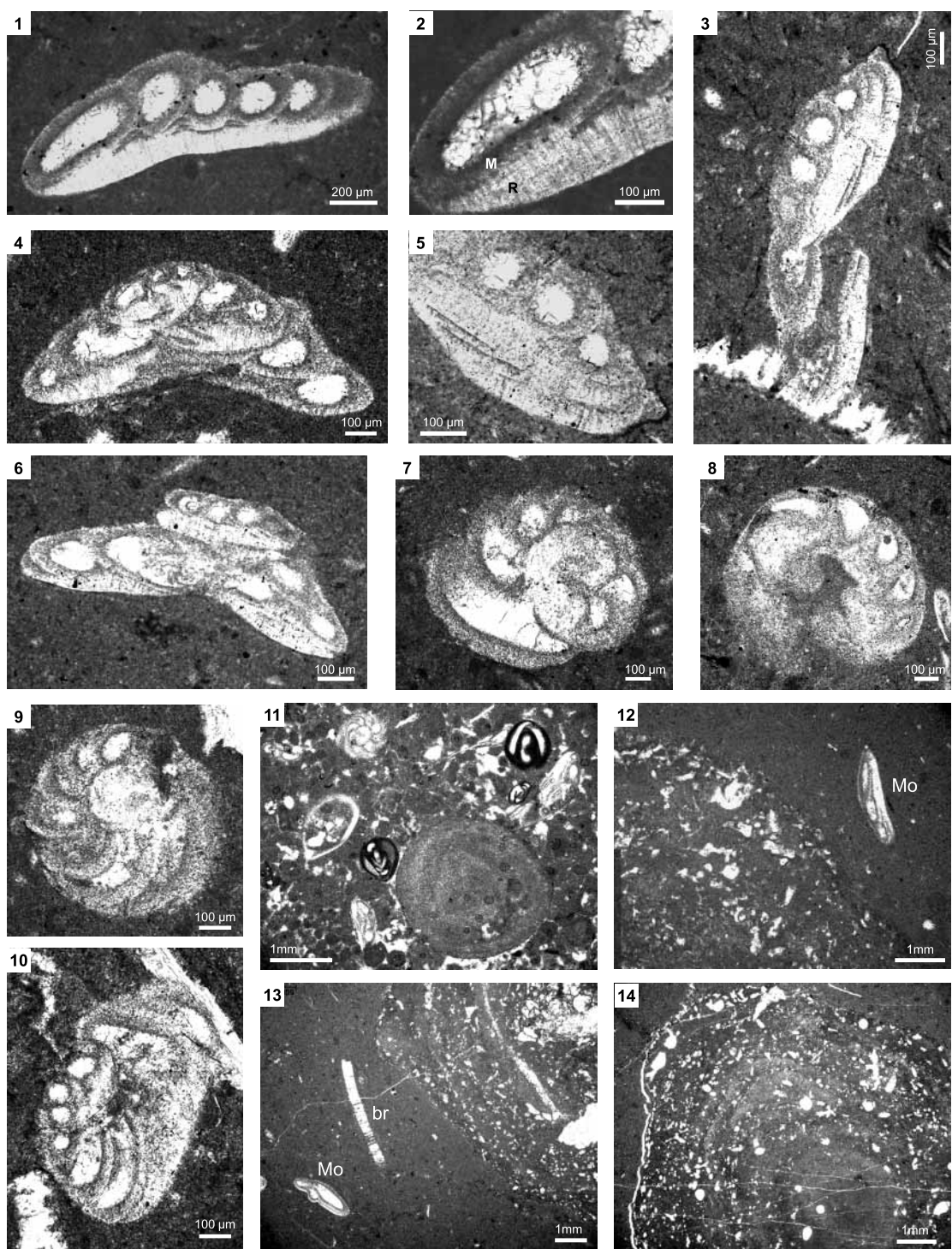


Fig. 4. Distribution of *Mohlerina basiliensis* and oncooids along the studied sections. Two orders of depositional sequences (elementary and small-scale sequences) were identified and related to sea-level fluctuations induced by changes of orbital parameters. Elementary and small-scale sequences are interpreted as corresponding to 20 ka and 100 ka orbital (Milankovitch) cycles, respectively.



Explanation of Plate 1.

Mohlerina basiliensis from the Hauptmumienbank Member (Late Oxfordian, Swiss Jura Mountains). **fig. 1.** Subaxial section of *Mohlerina basiliensis*, sample Vo-20. **fig. 2.** Enlargement of specimen in figure 1, showing a double-layered wall structure – thin dark microgranular calcite layer (M) and thick hyaline-radial calcite layer with a lamellar structure (R), sample Vo-20. **fig. 3.** Subaxial section of *Mohlerina basiliensis*, sample Pe-81B. **fig. 4.** Axial section of *Mohlerina basiliensis*, sample Sa-19A. **fig. 5.** Enlargement of specimen in figure 3, showing the lamellar structure of the thick outer hyaline radial layer, sample Pe-81B. **fig. 6.** Subaxial section of *Mohlerina basiliensis*, sample Pe-80B. **fig. 7.** Equatorial section of *Mohlerina basiliensis*, sample Pe-86B. **fig. 8.** Equatorial section of *Mohlerina basiliensis*, sample Pe-80B. **fig. 9.** Equatorial section of *Mohlerina basiliensis*, sample Pe-86B. **fig. 10.** Oblique section of *Mohlerina basiliensis*, sample Pe-84B. **fig. 11.** High-energy facies (packstone/grainstone) composed of micritized ooids, peloids, bivalves, *Mohlerina basiliensis* and miliolids, sample Vo-24A. **fig. 12.** *Bacinella-Lithocodium* (Type 3 of Védrine *et al.*, 2007) oncoid wackestone associated with *Mohlerina basiliensis*, sample Vo-22. **fig. 13.** *Bacinella-Lithocodium* (Type 3) oncoid wackestone associated with *Mohlerina basiliensis* and a perforated brachiopod fragment, sample Pe-83A. **fig. 14.** *Bacinella-Lithocodium* (Type 3) oncoid, sample Pe-83A.

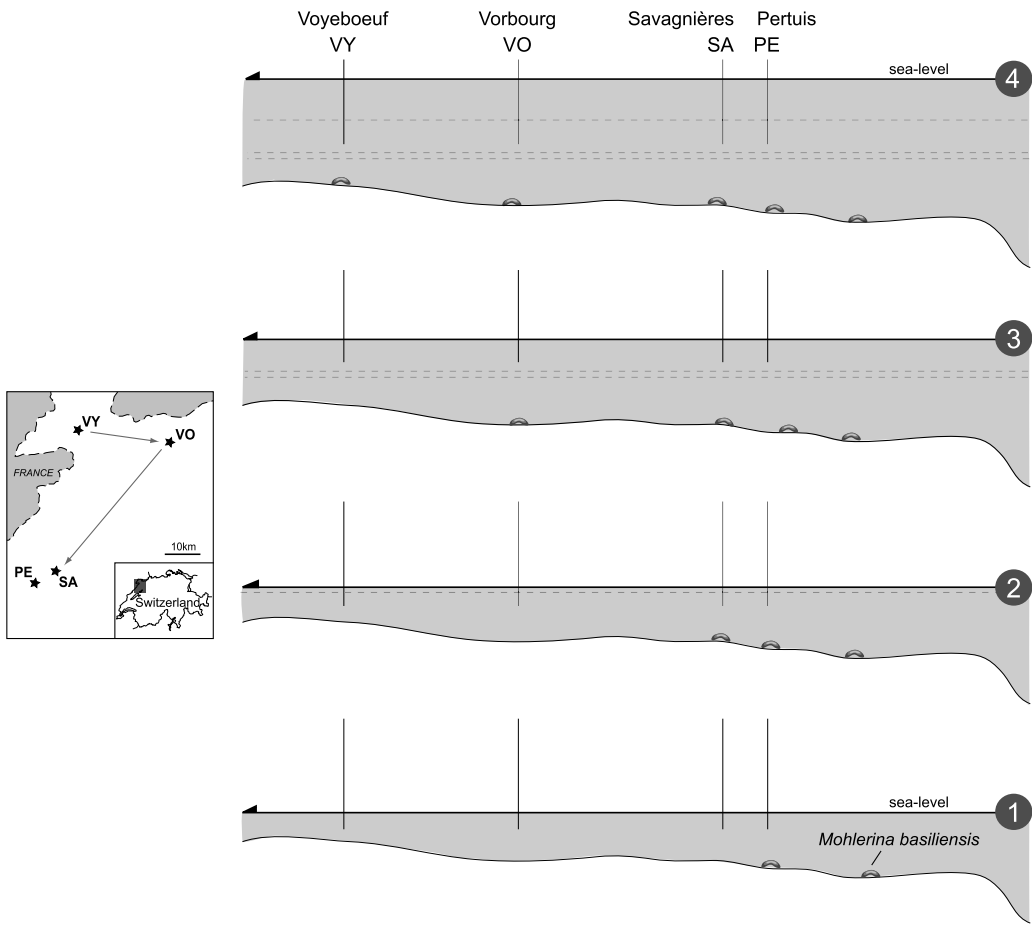


Fig. 7. Platform flooding illustrated by the distribution of *Mohlerina basiliensis*. The platform morphology suggested by facies analysis allows us to explain why the successive first occurrences of *M. basiliensis* is successively later from ‘distal’ to ‘proximal’ platform sections. Concerning the Savagnières and Pertuis sections, which are relatively close, the first occurrence and the abundance of *M. basiliensis* suggest a deeper bathymetry for the Pertuis section.

and representing an open lagoon. Consequently, the cortex configuration and composition indicate calm periods during which *Bacinnella–Lithocodium* could grow and occasional higher energy periods during which the micritic laminae were formed. Consequently, oncoids are generally considered as good proxies for palaeoenvironmental conditions (Dahanayake, 1977; Kuss, 1990; Védérine *et al.*, 2007).

SPATIAL AND STRATIGRAPHIC DISTRIBUTION

Based on the dominant facies, sections are positioned from ‘proximal’ (Voyeboeuf) to ‘distal’ (Savagnières and Pertuis). However, because platform morphology changed through time, these attributions can only indicate a general ‘proximal–distal’ trend. The *Mohlerina basiliensis* distribution is relatively patchy. The ‘distal’ platform facies present a higher abundance of this foraminifer (Figs 4 & 6). Its minimum abundance (only two specimens per thin section) is found in the relatively ‘proximal’ Voyeboeuf section, and the maximum abundance (up to 12 specimens per thin section) in the relatively ‘distal’ Pertuis section. In the latter, *M. basiliensis* has a more extensive stratigraphic occurrence than in the other sections (Figs 4 & 6).

In addition, the distribution of *Bacinnella–Lithocodium* oncoids in time and space is patchy (Fig. 4). However,

Bacinnella–Lithocodium oncoids are more abundant in ‘distal’ platform facies, especially in the Pertuis section (Fig. 4). Micrite-dominated oncoids are present in all the sections but less in the Pertuis section. Occasionally, *Bacinnella–Lithocodium* and micrite-dominated oncoids co-exist.

In a time–space diagram (based on the cyclostratigraphic interpretation of the sections; Védérine, 2007; Védérine *et al.*, 2007), the *Mohlerina basiliensis* distribution shows a particular evolution (Fig. 6). The first occurrence of the foraminifer differs between sections in time and space but follows the ‘proximal–distal’ evolution. In the most ‘distal’ section (Pertuis), the first occurrence is coeval with the beginning of the second-order marine transgression (‘1’; Fig. 6). In the three other sections, the first occurrence is successively later (Fig. 6). This illustrates the stepwise flooding of the platform during the early Bimammatum transgression (Fig. 7). However, *M. basiliensis* distribution does not reveal a clear preferential occurrence within small-scale and elementary sequences or around small-scale and elementary sequence boundaries or maximum floodings.

The distribution of the oncooid types shows a clear correlation with sequence stratigraphy. Micrite-dominated oncoids are found preferentially around 100 ka and 20 ka sequence boundaries and in transgressive deposits, while *Bacinnella–Lithocodium*

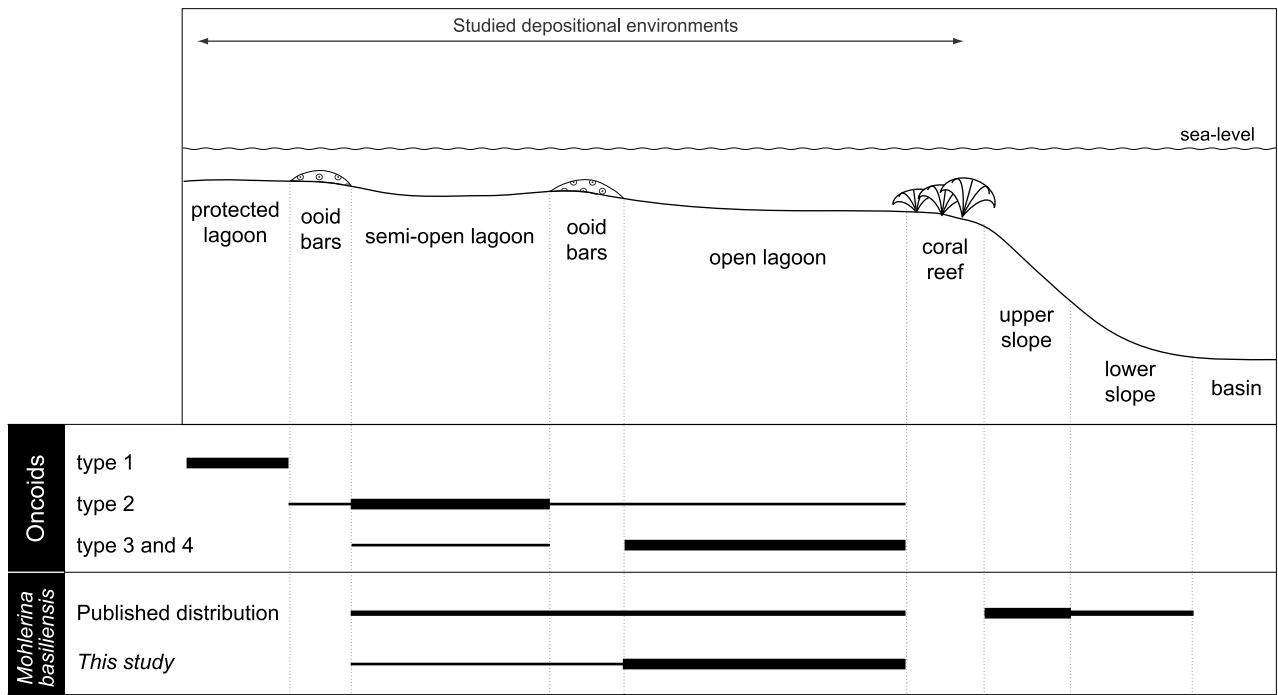


Fig. 8. Distribution of oncoids and *Mohlerina basiliensis* from protected lagoon to basin. Oncoid distribution is from Védérine *et al.* (2007). Published distribution refers to Darga & Schlagintweit (1991), Schlagintweit & Ebli (1999), Sasaran *et al.* (2000), Velić *et al.* (2002), Gawlick *et al.* (2003) and Flügel (2004).

oncoids occur preferentially around 100 ka and 20 ka maximum floodings and in highstand deposits (Védérine *et al.*, 2007).

The distributions of *Mohlerina basiliensis* and *Bacinnella-Lithocodium* oncoids show a strong correlation (Fig. 4). *M. basiliensis* always occurs when *Bacinnella-Lithocodium* oncoids are present (Figs 4 & 6). On the other hand, the presence of *Bacinnella-Lithocodium* oncoids does not imply the occurrence of *M. basiliensis*. For example, the base of the Voyeboeuf section contains *Bacinnella-Lithocodium* oncoids in three intervals but no *M. basiliensis* (in the 1.2 and 1.3 elementary sequences; Fig. 4).

PALAEOENVIRONMENTS AND PALAEOECOLOGY

Water depth and water turbidity are important parameters because they control the amount of light received by benthic foraminifera. The substrate on, or in which they live influences the test morphology (Murray, 1991). Other important factors are the oxygen content and food availability, which act on the foraminifer type and diversity (e.g. Jorissen *et al.*, 1995; Fugagnoli, 2004). Temperature and salinity also play a role in foraminifer distribution by modifying the CaCO₃ solubility in seawater, which acts on the nature of the test (Greiner, 1969). The palaeoenvironmental and palaeoecological requirements of *Mohlerina basiliensis* are not well known. The successively later occurrence of *M. basiliensis* from ‘distal’ to ‘proximal’ platform sections illustrates the stepwise flooding of the platform (Fig. 7) and thus implies a dependence on normal-marine conditions. Its occurrence in high-energy as well as in low-energy facies probably suggests a reworking by waves and currents. Oncoids and their associated microencrusters grow on the sediment surface and thus monitor water transparency and trophic level, which are both controlled by terrigenous influx (clays and

nutrients) onto the shallow carbonate platform. The *Bacinnella-Lithocodium* association, included in the oncooid cortex, indicates oligotrophic, clear, oxygenated and normal-marine waters (e.g. Dupraz & Strasser, 1999). In the Hauptmumienbank deposits, *Mohlerina basiliensis* is always found when *Bacinnella-Lithocodium* oncoids are present (Fig. 4). Hence, the co-occurrence of *Bacinnella-Lithocodium* oncoids and *M. basiliensis* suggests that this foraminifer required similar ecological conditions. Figure 8 synthesizes the oncooid and foraminifer distribution from protected lagoon to basin. Type 1 and 2 oncoids (micrite-dominated oncoids) are found in protected and semi-open lagoons, respectively, whereas *Bacinnella-Lithocodium* oncoids (Type 3 and 4 oncoids) are found mostly in open lagoons. *M. basiliensis* has a large distribution from the internal platform to the slope but is more abundant in open lagoons. Finally, the early Bimammatum transgression appears to have created ideal environmental conditions for the co-occurrence of *Bacinnella-Lithocodium* oncoids and *Mohlerina basiliensis*. Consequently, the spatial and stratigraphical distribution of both *Bacinnella-Lithocodium* oncoids and *Mohlerina basiliensis* can be used for palaeoenvironmental and palaeoecological reconstructions.

CONCLUSIONS

Mohlerina basiliensis distribution reveals lateral and temporal changes related to a marine transgression. Specimens are more abundant in the ‘distal’ sections than in ‘proximal’ ones and the first occurrence of this foraminifer is in the most ‘distal’ section (Pertuis). The successively later occurrence of *Mohlerina basiliensis* from ‘distal’ to ‘proximal’ platform sections illustrates the stepwise flooding of the platform during the early

Bimammatum transgression and thus implies a dependence on normal-marine conditions. *Bacinella*–*Lithocodium* oncoid distribution is relatively patchy through time and space. However, a ‘proximal–distal’ evolution exists with more abundant *Bacinella*–*Lithocodium* oncoids in the ‘distal’ platform facies. These oncoids are found preferentially around maximum floodings and in highstand deposits (Védrine *et al.*, 2007), indicating a link with relative sea-level fluctuations. The comparison of the distributions of these two components shows that *Mohlerina basiliensis* occurs preferentially when *Bacinella*–*Lithocodium* oncoids are present. The co-occurrence of these two components thus suggests common environmental factors.

ACKNOWLEDGEMENTS

The author would like to thank Drs Antonietta Cherchi, Ioan Bucur and John Gregory (the editor) for their reviews. Thanks also go to André Strasser, Michèle Caron, Silvia Spezzaferri (University of Fribourg), and Hugues Bauer (BRGM) for their critical reading of the manuscript. Thanks to the Swiss National Science Foundation (grant No. 20-67736.05) for financial support.

Manuscript received 16 November 2006

Manuscript accepted 20 December 2007

REFERENCES

- Bernier, P. 1984. *Les formations carbonatées du Kimméridgien et du Portlandien dans le Jura méridional. Stratigraphie, micropaléontologie, sédimentologie*. Document du Laboratoire de Géologie de l'Université de Lyon 1, **92**, 803pp.
- Bucur, I.I., Senowbari-Daryan, B. & Abate, B. 1996. Remarks on some foraminifera from the Upper Jurassic (Tithonian) reef limestone of Madonie Mountains (Sicily). *Bollettino della Società Paleontologica Italiana*, **35** (1): 65–80.
- Bucur, I.I., Sasaran, L., Sasaran, E. & Schuller, V. 2004. Micropaleontological study of the limestone olistoliths within Upper Cretaceous wildflysch from Hasdate (Eastern border of the Gilau Mountains). In: Codrea, V.A., Petrescu, I. & Dica, E.P. (Eds), *Acta Palaeontologica Romaniaae*, **4**: 55–67.
- Cannariato, K.G., Kennett, J.P. & Behl, R.J. 1999. Biotic response to late Quaternary rapid climate switches in Santa Barbara Basin: Ecological and evolutionary implications. *Geology*, **27**: 63–66.
- Cherchi, A. & Schroeder, R. 2006. Remarks on the systematic position of *Lithocodium* Elliott, a problematic microorganism from the Mesozoic carbonate platforms of the Tethyan realm. *Facies*, **52**: 435–440.
- Dahanayake, K. 1977. Classification of oncoids from the Upper Jurassic carbonates of the French Jura. *Sedimentary Geology*, **18**: 337–353.
- Darga, R. & Schlagintweit, F. 1991. Mikrofazies, Paläontologie und Stratigraphie des Lerchkogelkalke (Tithon–Berrias) des Dietrichshorns (Salzburger Land, Nördliche Kalkalpen). *Jahrbuch des Geologischen Bundesanstalt*, **134** (2): 205–226.
- Delage, Y. & Héroutard, E. 1896. *La cellule et les Protozoaires*. Traité de zoologie concrète, **1**. Schleicher Frères, Paris, 584pp.
- Dieni, I. & Radoicic, R. 2000. *Clypeina dragastani* sp. nov., *Salpingoporella granieri* sp. nov. and other dasycladacean algae from the Berriasian of Eastern Sardinia. In: Bucur, I.I. & Filipescu, S. (Eds), *Acta Palaeontologica Romaniaae*, **2**(1999): 105–123.
- Dupraz, C. & Strasser, A. 1999. Microbialites and micro-encrusters in shallow coral bioherms (Middle to Late Oxfordian, Swiss Jura Mountains). *Facies*, **40**: 101–130.
- Ehrenberg, G.C. 1838. *Die Infusionstierchen als vollkommene Organismen. Ein Blick in das tiefere organische Leben der Natur*. L. Voss, Leipzig, 547pp.
- Elliott, G.F. 1956. Further records of fossil calcareous algae from the Middle East. *Micropaleontology*, **2**: 327–334.
- Flügel, E. 2004. *Microfacies of carbonates rocks. Analysis, interpretation and application*. Springer, Berlin, 976pp.
- Fugagnoli, A. 2004. Trophic regimes of benthic foraminiferal assemblages in Lower Jurassic shallow water carbonates from northeastern Italy (Calcarei Grigi, Trento Platform, Venetian Prealps). *Palaeogeography, Palaeoclimatology, Palaeoecology*, **205**: 111–130.
- Gawlick, H.J., Schlagintweit, F. & Lein, R. 2003. Das Höherstein-Plateau südlich Bad Ischl – Neue Daten zur Stratigraphie Fazies und Sedimentologie: Implikationen zur paläogeographischen Rekonstruktion im Jura des zentralen Salzkammergutes. In: Weidinger, J.T., Lobitzer, H. & Spitzbart, I. (Eds), *Beiträge zur Geologie des Salzkammerguts*. Gmundner Geo-Studien, **2**: 107–114.
- Greiner, G.O.G. 1969. Recent benthonic foraminifera environmental factors controlling their distribution. *Nature*, **223**: 168–170.
- Gygi, R.A. 1992. Structure, pattern of distribution and paleobathymetry of late Jurassic microbialites (stromatolites and oncoids) in northern Switzerland. *Eclogae geologicae Helvetiae*, **85**: 799–824.
- Gygi, R.A. 1995. Datierung von Seichtwassersedimenten des Späten Jura in der Nordwestschweiz mit Ammoniten. *Eclogae geologicae Helvetiae*, **88**: 1–58.
- Gygi, R.A. 2000. *Integrated stratigraphy of the Oxfordian and Kimmeridgian (Late Jurassic) in northern Switzerland and adjacent southern Germany*. Mémoire de l'Académie Suisse des Sciences Naturelles, **104**: 151pp.
- Gygi, R.A. & Persoz, F. 1986. Mineralostratigraphy, litho- and biostratigraphy combined in correlation of the Oxfordian (Late Jurassic) formations of the Swiss Jura range. *Eclogae Geologicae Helvetiae*, **79**: 385–454.
- Gygi, R.A., Coe, A.L. & Vail, P.R. 1998. Sequence stratigraphy of the Oxfordian and Kimmeridgian stages (Late Jurassic) in Northern Switzerland. In: De Graciansky, P.C., Hardenbol, J., Jacquin, T. & Vail, P.R. (Eds), *Mesozoic and Cenozoic sequence stratigraphy of European basins*. SEPM special publication, **60**: 527–544.
- Hardenbol, J., Thierry, J., Farley, M.B., Jacquin, T., de Graciansky, P.-C. & Vail, P.R. 1998. Mesozoic and Cenozoic sequence chronostratigraphic framework of European basins. In: de Graciansky, P.-C., Hardenbol, J., Jacquin, T. & Vail, P.R. (Eds), *Mesozoic and Cenozoic sequence stratigraphy of European Basins*. SEPM special publication, **60**: 3–13.
- Immenhauser, A., Hillgärtner, H. & Van Betum, E. 2005. Microbial-foraminiferal episodes in the Early Aptian of the southern Tethyan margin: ecological significance and possible relation to oceanic anoxic event 1a. *Sedimentology*, **52**: 77–99.
- Jorissen, F.J., de Stiger, H.C. & Widmark, J.G.V. 1995. A conceptual model explaining benthic foraminiferal microhabitats. *Marine Micropaleontology*, **19**: 3–15.
- Kuss, J. 1990. Middle Jurassic calcareous algae from the Circum-Arabian area. *Facies*, **22**: 59–86.
- Leinfelder, R.R., Nose, M., Schmid, D.U. & Werner, W. 1993. Microbial crusts of the Late Jurassic: composition, palaeoecological significance and importance in reef construction. *Facies*, **29**: 195–230.
- Martin, R.E. 1988. Benthic foraminiferal zonation in deep-water carbonate platform margin environments, northern Little Bahama Bank. *Journal of Paleontology*, **62** (1): 1–8.
- Mohler, W. 1938. Mikropaläontologische Untersuchungen in der nord-schweizerischen Juraformation. *Abhandlungen der Schweizerischen Paläontologischen Gesellschaft*, **60**: 1–53.
- Murray, J.W. 1991. *Ecology and palaeoecology of benthic foraminifera*. Longman Scientific & Technical, UK, 397pp.
- Peryt, T.M. 1983. Oncoids: a comment to recent developments. In: Peryt, T.M. (Ed.), *Coated Grains*. Springer Verlag, Berlin, 273–275.
- Pop, G. & Bucur, I.I. 2001. Upper Jurassic and Lower Cretaceous sedimentary formations from the Vâlcan Mountains (South Carpathians). *Studia Universitatis Babeş-Bolyai Geologia*, **46** (2): 77–94.
- Radoicic, R. 1959. Some problematic microfossils from the Dinarian Cretaceous. *Bulletin du Service Géologique et Géophysique R. P. Serbie*, **17**: 87–92.
- Sasaran, E., Hosu, A., Spalnacan, R. & Bucur, I.I. 2000. Microfacies, microfossils and sedimentary evolution of the Sandulesti Limestone Formation in Cheile Turzii (Apuseni Mountains, Romania). In: Bucur, I.I. & Filipescu, S. (Eds), *Acta Palaeontologica Romaniaae*, **2**(1999): 453–462.

- Schlagintweit, F. & Ebli, O. 1999. New results on microfacies, biostratigraphy and sedimentology of Late Jurassic–Early Cretaceous platform carbonates of the Northern Calcareous Alps, Part I: Tressenstein Limestone, Plassen Formation. *Abhandlungen der geologischen Bundesanstalt*, **56**: 379–418.
- Schmid, D.U. 1996. Marine Mikrobolithe und Mikroinkrustierer aus dem Oberjura. *Profil*, **9**: 101–251.
- Schmid, D.U. & Leinfelder, R.R. 1996. The Jurassic *Lithocodium aggregatum*–*Troglotella incrustans* foraminiferal consortium. *Palaeontology*, **39**: 21–52.
- Septfontaine, M. 1981. Les foraminifères imperforés des milieux de plate-forme au Mésozoïque: détermination pratique, interprétation phylogénétique et utilisation biostratigraphique. *Revue de Micropaléontologie*, **23** (3–4): 169–203.
- Serban, D., Bucur, I.I. & Sasaran, E. 2004. Micropaleontological assemblages and microfacies characteristics of the Upper Jurassic limestones from Căprioara–Pojoga (Mureș Trough). In: Codrea, V.A., Petrescu, I. & Dica, E.P. (Eds), *Acta Paleontologica Romaniaae*, **4**: 475–484.
- Shiraishi, F. & Kano, A. 2004. Composition and spatial distribution of microencrusters and microbial crusts in upper Jurassic–lowermost Cretaceous reef limestone (Torinosu Limestone, southwest Japan). *Facies*, **50**: 217–227.
- Smith, F.D. 1955. Planktonic foraminifera as indicators of depositional environment. *Micropaleontology*, **1** (2): 147–151.
- Strasser, A., Pittet, B., Hillgärtner, H. & Pasquier, J.B. 1999. Depositional sequences in shallow carbonate-dominated sedimentary systems: concepts for a high-resolution analysis. *Sedimentary Geology*, **128**: 201–221.
- Tasli, K. 1993. Micropaléontologie, stratigraphie et environnement de dépôt des séries jurassiques à faciès de plate-forme de la région de Kale-Gümüşhane (Pontides Orientales, Turquie). *Revue de Micropaléontologie*, **36** (1): 44–65.
- Thierry, J., et al. 2000. Map 10, Early Kimmeridgian. In: Dercourt, J., Gaetani, M., et al. (Eds), *Atlas Peri-Tethys*. Palaeogeographical Maps, CCGM/CGMW, Paris.
- Vail, P.R., Audemard, F., Bowman, S.A., Eisner, P.N. & Perez-Cruz, C. 1991. The stratigraphic signatures of tectonics, eustasy and sedimentology – an overview. In: Einsele, G., Ricken, W. & Seilacher, A. (Eds), *Cycles and Events in Stratigraphy*. Springer-Verlag, Berlin, 617–659.
- Velić, I., Tišljarić, J., Vlahović, I., Velić, J., Koch, G. & Matičec, D. 2002. Palaeogeographic variability and depositional environments of the Upper Jurassic carbonate rocks of Velica Kapela Mt (Gorski Kotar Area, Adriatic carbonate platform, Croatia). *Geologica Croatica*, **55** (2): 121–138.
- Védrine, S. 2007. *High-frequency palaeoenvironmental changes in mixed carbonate – siliciclastic sedimentary systems (Late Oxfordian, Switzerland, France, and southern Germany)*. *GeoFocus*, **19**: 116pp.
- Védrine, S., Strasser, A. & Hug, W. 2007. Oncoid growth and distribution controlled by sea-level fluctuations and climate (Late Oxfordian, Swiss Jura Mountains). *Facies*, **53**: 535–552.
- Ziegler, P.A. 1988. *Evolution of the Arctic–North Atlantic and the Western Tethys*. American Association of Petroleum Geologist Memoir, **43**: 198pp.