

Supporting Information

Controlling the lateral aggregation of perfluoroalkylated hexa-peri-hexabenzocoronenes

Olivier F. Aebischer,^a Annina Aebischer,^b Bertrand Donnio,^c Bassam Alameddine,^d Massoud Dadras,^e
Hans-Ulrich Güdel,^b Daniel Guillon,^c Titus A. Jenny,^{*a}

^a *Department of Chemistry, University of Fribourg, chemin du Musée 9, 1700 Fribourg, Switzerland. Fax: +41 26 300 9739; Tel: +41 26 300 8778; E-mail: titus.jenny@unifr.ch*

^b *Department of Chemistry and Biochemistry, University of Bern, Feiestrasse 3, 3000 Bern 9, Switzerland. Fax: +41 31 631 4399, Tel: +41 31 631 42 49; E-mail: guedel@iac.unibe.ch*

^c *Institut de Physique et Chimie des Matériaux de Strasbourg – IPCMS, Groupe des Matériaux Organiques – GMO, UMR 7504 – CNRS/Université Louis Pasteur, 23, rue du Loess, BP 43, 670334 Strasbourg Cedex 2, France. Fax: 0388107246; Tel: 0388107157; E-mail: bdonnio@ipcms.u-strasbg.fr*

^d *Department of Chemistry, University of Balamand, Tripoli, Lebanon. Fax: +961 1 663885; Tel: +41 961 6 930250; E-mail: balameddine@hotmail.com*

^e *Service for Microscopy and Nanoscopy, IMT, University of Neuchâtel, 2007 Neuchâtel, Switzerland. Fax: +41 32 720 5711; Tel: +41 32 720 5248; E-mail: massoud.dadras@unine.ch*

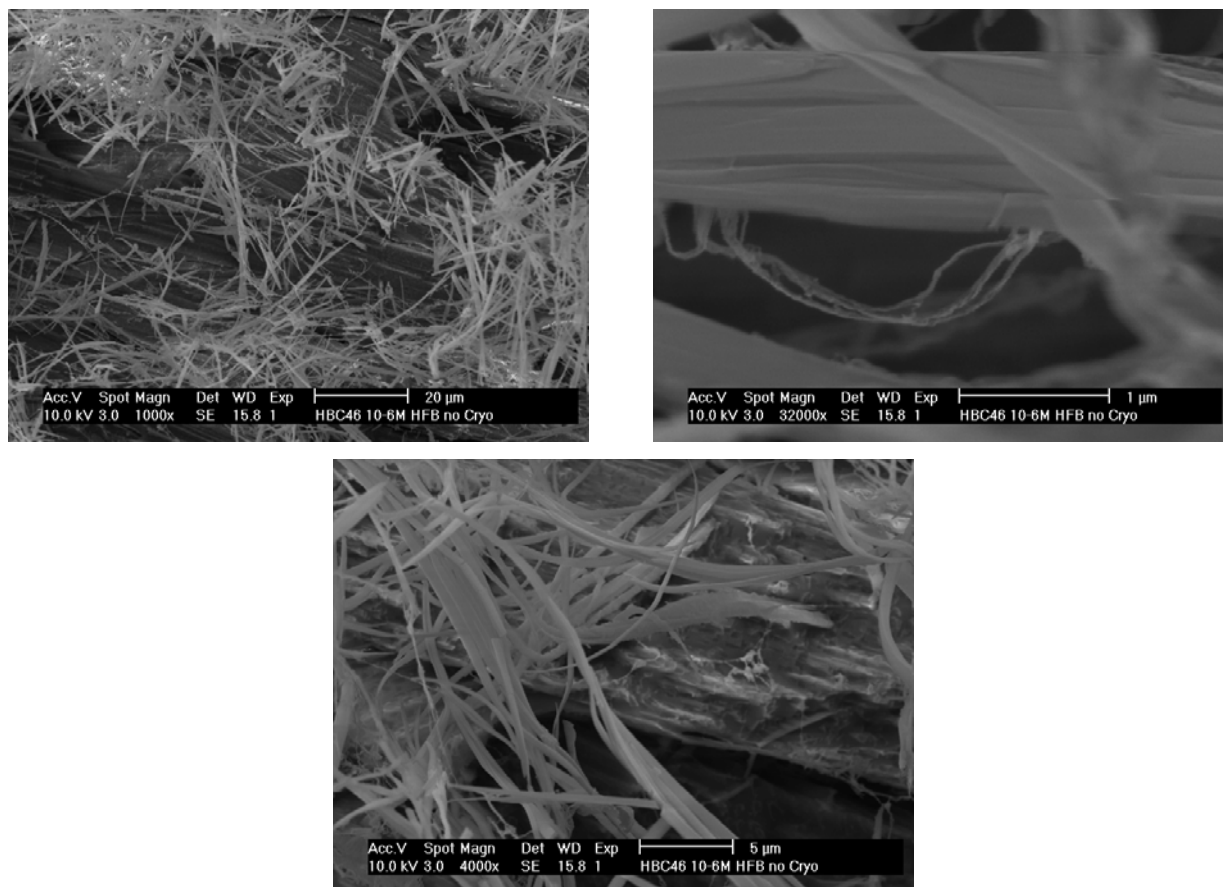


Figure S1: Micrographs obtained by cryo-SEM of HBC-[(CH₂)₄(CF₂)₆F]₆ (**1a**) nanostructures in a hexafluorobenzene solution (10⁻³ M).

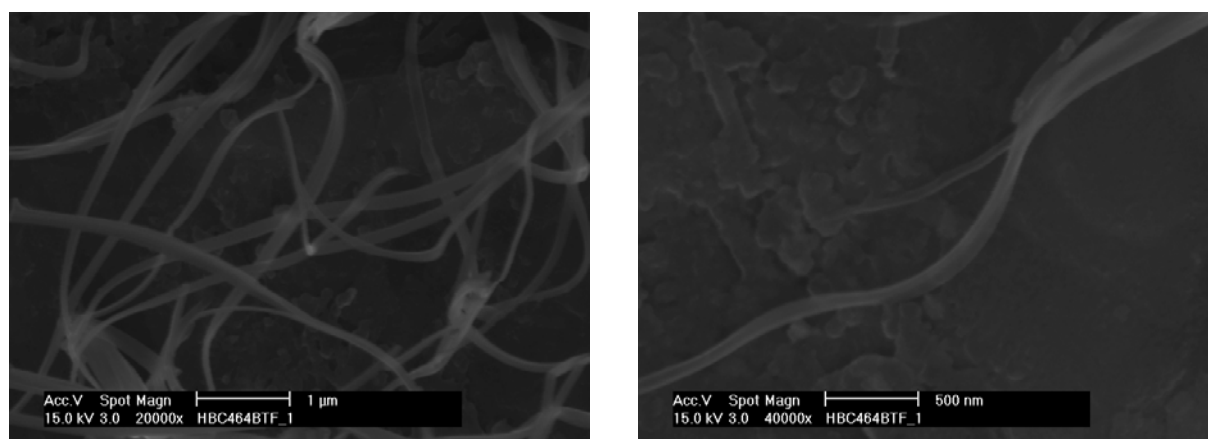


Figure S2: Micrographs obtained by cryo-SEM of HBC-[(CH₂)₄(CF₂)₆F]₆ (**1a**) nanostructures in a benzotrifluoride solution (10⁻⁵ M).

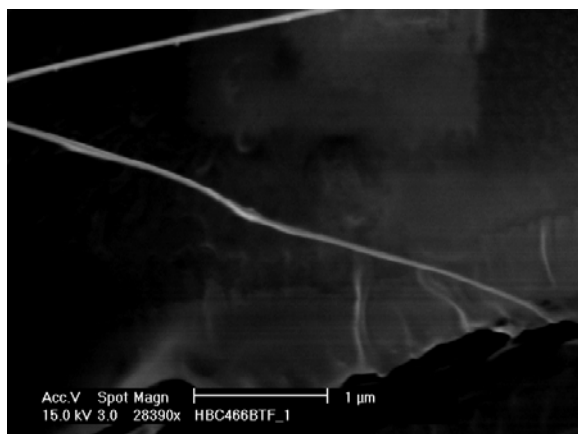


Figure S3: Micrographs obtained by cryo-SEM of HBC-[(CH₂)₄(CF₂)₆F]₆ (**1a**) nanostructures in a BTF solution (10⁻⁶ M).

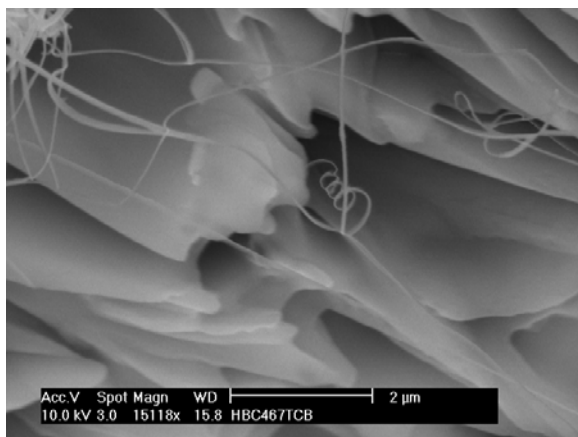


Figure S4: Micrographs obtained by SEM of HBC-[(CH₂)₄(CF₂)₆F]₆ (**1a**) nanostructures of a trichlorobenzene solution (10⁻⁷ M).

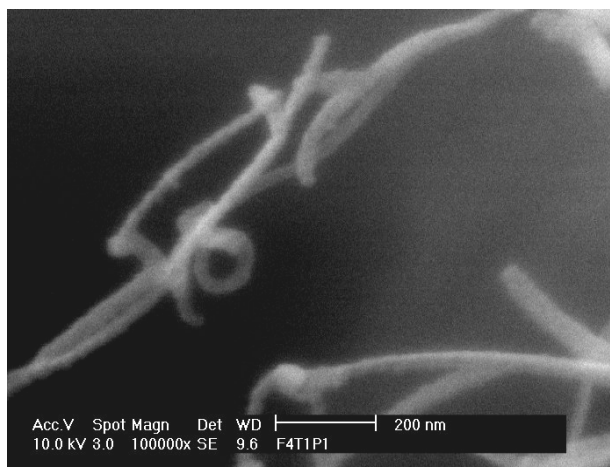


Figure S5: Micrographs obtained by cryo-SEM of HBC-[(CH₂)₄(CF₂)₈F]₆ (**1b**) nanostructures in trichlorobenzene.

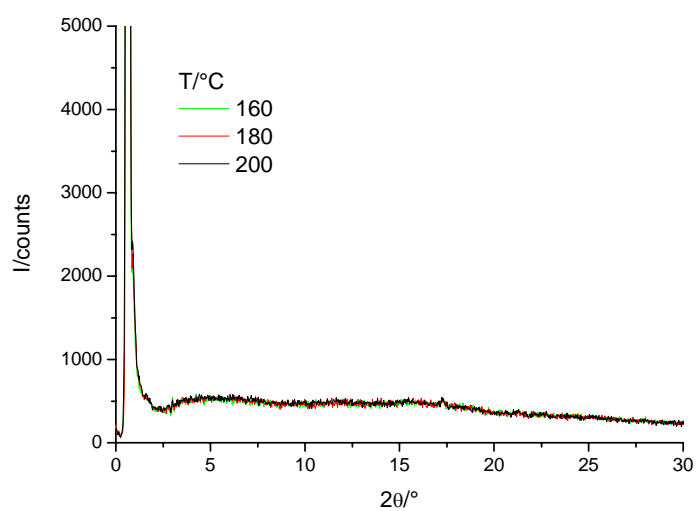


Figure S6: XRD pattern of HBC **2** at various temperatures

Figure S7: DSC trace of HBC **1a**