

Atmos. Meas. Tech., 8, 4845–4850, 2015  
www.atmos-meas-tech.net/8/4845/2015/  
doi:10.5194/amt-8-4845-2015  
© Author(s) 2015. CC Attribution 3.0 License.



# OMI total column ozone: extending the long-term data record

R. D. McPeters<sup>1</sup>, S. Frith<sup>2</sup>, and G. J. Labow<sup>2</sup>

<sup>1</sup>Laboratory for Atmospheres, Code 614, NASA Goddard Space Flight Center, Greenbelt, MD, USA

<sup>2</sup>Science Systems and Applications Inc., 10210 Greenbelt Rd., Lanham, MD 20706, USA

Correspondence to: R. D. McPeters ([richard.d.mcpeters@nasa.gov](mailto:richard.d.mcpeters@nasa.gov))

Received: 18 May 2015 – Published in Atmos. Meas. Tech. Discuss.: 21 July 2015

Revised: 13 October 2015 – Accepted: 26 October 2015 – Published: 19 November 2015

**Abstract.** The ozone data record from the Ozone Monitoring Instrument (OMI) onboard the NASA Earth Observing System (EOS) Aura satellite has proven to be very stable over the 10-plus years of operation. The OMI total column ozone processed through the Total Ozone Mapping Spectrometer (TOMS) ozone retrieval algorithm (version 8.5) has been compared with ground-based measurements and with ozone from a series of SBUV/2 (Solar Backscatter Ultraviolet) instruments. Comparison with an ensemble of Brewer–Dobson sites shows an absolute offset of about 1.5 % and almost no relative trend. Comparison with a merged ozone data set (MOD) created by combining data from a series of SBUV/2 instruments again shows an offset, of about 1 %, and a relative trend of less than 0.5 % over 10 years. The offset is mostly due to the use of the old Bass–Paur ozone cross sections in the OMI retrievals rather than the Brion–Daumont–Malicet cross sections that are now recommended. The bias in the Southern Hemisphere is smaller than that in the Northern Hemisphere, 0.9 % vs. 1.5 %, for reasons that are not completely understood. When OMI was compared with the European realization of a multi-instrument ozone time series, the GTO (GOME type Total Ozone) data set, there was a small trend of about  $-0.85\%$  decade<sup>-1</sup>. Since all the comparisons of OMI relative to other ozone measuring systems show relative trends that are less than 1 % decade<sup>-1</sup>, we conclude that the OMI total column ozone data are sufficiently stable that they can be used in studies of ozone trends.

## 1 Introduction

While ozone has sometimes been referred to as a “solved problem”, it is important to continue to monitor ozone. Accurate measurements of altitude- and latitude-dependent ozone

trends are needed to verify the accuracy of the models that are being used to predict the expected behavior of ozone in the next 100 years (Park et al., 1999). Because climate change and ozone change turn out to be intimately related (McLinden and Fioletov, 2011), continuing an accurate ozone record is also important for verification of the climate models.

Under NASA’s MEaSUREs program, an acronym for Making Earth System data records for Use in Research Environments, a long-term ozone data record was created using data from a series of SBUV and SBUV/2 (Solar Backscatter Ultraviolet) instruments (McPeters et al., 2013) covering the period from 1979 to the present. A consistent calibration was applied at the radiance level to create this time series. Data from this series of SBUV/2 instruments were combined into a single ozone time series (Frith et al., 2014), which we designate the MOD (merged ozone data) time series. Data from the Ozone Monitoring Instrument (OMI), which was launched in 2004 on the Aura spacecraft, overlap data from SBUV/2 instruments on NOAA 16, NOAA 17, NOAA 18, and NOAA 19. Since June of 2014 only the instrument on NOAA 19 continues to operate.

Data from the Ozone Mapping Profiler Suite (OMPS) nadir profiler instrument on Suomi National Polar-orbiting Partnership (NPP), which began operation in 2012, will be used to continue the MOD time series. If the OMI ozone can be shown to be a stable, well-calibrated time series, OMI ozone can be an important bridge between the SBUV/2 ozone and the OMPS ozone. Moreover, because OMI provides full global coverage on a daily basis where SBUV/2 measures only along the sub-satellite track at 26° longitude intervals, issues related to coverage can be addressed using OMI data.

## 2 The OMI ozone data record

The Ozone Monitoring Instrument (OMI) (Levelt et al., 2006) is a contribution of the Netherlands's Agency for Aerospace Programmes (NIVR) in collaboration with the Finnish Meteorological Institute (FMI) to the NASA Aura mission. OMI is a nadir-viewing, wide-swath, ultraviolet–visible imaging spectrometer that provides daily global measurements of the solar radiation backscattered by the Earth's atmosphere and surface, along with measurements of the solar irradiance. Unlike the heritage TOMS (Total Ozone Mapping Spectrometer) instruments which measure ozone using six discrete wavelengths from 306 to 380 nm, OMI measures the complete spectrum from 270 to 500 nm at an average spectral resolution of 0.5 nm. Like TOMS, OMI provides complete global maps of total column ozone on a daily basis.

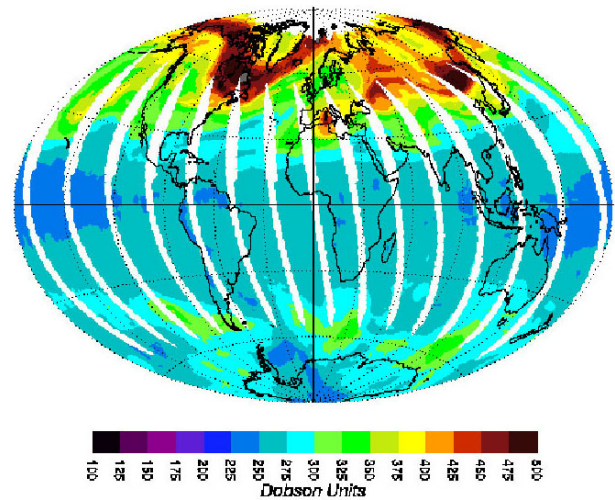
Two distinct algorithms have been used to compute total column ozone from OMI, a TOMS-type algorithm, hereafter referred to as OMI-TOMS, and a differential optical absorption spectroscopy (DOAS) algorithm (Veefkind et al., 2006). A variation of the version 8 TOMS algorithm (Bhartia, 2007) used to process data from the series of TOMS instruments has been used for the OMI-TOMS retrieval. In this paper we use the OMI-TOMS retrieval, partly because after 20 years of development it is a very robust algorithm, and also in order to maintain continuity with a TOMS data record that dates back to November 1978. Designated the v8.5 algorithm, the most significant enhancement is that the longer wavelengths measured by OMI are used to infer cloud height on a scene-by-scene basis.

The OMI ozone data record starts in October 2004, shortly after the launch of Aura. Beginning in approximately 2008 the instrument began to experience partial blockage of its field of view as the protective film on the spacecraft began to peel. This effect known as the “row anomaly” results in the loss of data for the fields of view in the center-right part of each swath of observations. The affected data are uncorrectable and are flagged so that they are not used in analysis. The result is small stripes of missing data each orbit (Fig. 1) for the post-2008 period. While the flagging is not perfect, comparisons in this paper will show that the residual ozone errors are small.

The stability of OMI is monitored by tracking onboard instrument parameters (Dobber et al., 2008), by routine measurements of solar flux, and by tracking the stability of geophysical parameters like average ice reflectivity in Greenland and Antarctica. All these parameters show that OMI has been a far more stable instrument than the previous TOMS instruments.

## 3 Ozone comparisons

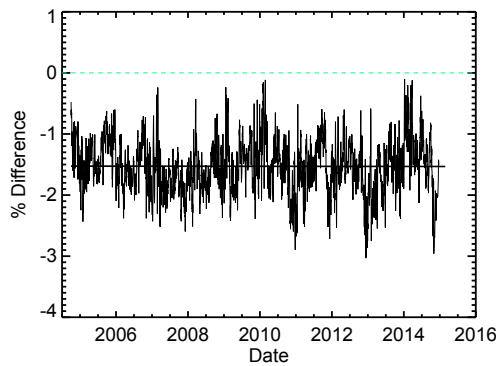
The stability of the OMI ozone data record has been evaluated through comparisons with ground-based observations



**Figure 1.** OMI gives full daily coverage except for stripes of data loss due to the row anomaly error beginning in 2008.

and with other satellite data sets. The previous analysis of the initial 2-year period of OMI data (McPeters et al., 2008) showed that the OMI-TOMS data had no evidence of drift relative to the ground network. Figure 2 compares average ozone from 76 Northern Hemisphere Brewer–Dobson stations with coincident observations of ozone measured by OMI over individual stations (Labow et al., 2013). Such comparisons have been shown capable of detecting instrument changes of a few tenths of a percent (McPeters et al., 2008). The linear fit in Fig. 2 shows that OMI has almost no drift in ozone relative to the ground observations ( $0.05\% \text{ decade}^{-1}$ ). The offset of about  $-1.5\%$  is mostly caused by the use of the older Bass–Paur ozone cross sections (Bass and Paur, 1984) in the OMI retrievals rather than the newer Brion–Daumont–Malicet ozone cross sections (Brion et al., 1993; Malicet et al., 1995). While Brewer–Dobson retrievals also use Bass–Paur cross sections, analysis shows that, unlike OMI, there is little change in the Brewer–Dobson retrievals when the newer cross sections are used. This is because the ground-based instruments use different sets of wavelengths than OMI.

The OMI vs. satellite comparisons were made using data from a series of SBUV/2 instruments flying on NOAA spacecraft. Data from these instruments were re-processed under NASA's MEASUREs program to create a coherent ozone time series suitable for studying long-term ozone change. Designated the version 8.6 processing (McPeters et al., 2013; Frith et al., 2014), the SBUV ozone data are used here as the standard for evaluating the stability of the OMI total column ozone time series. For the v8.6 reprocessing the radiances from SBUV on Nimbus 7 and from SBUV/2 instruments on NOAA 9, 11, 14, 16, 17, and 18 covering the period 1979–2011 were carefully analyzed and adjusted to create a consistent ozone data series. Data from the NOAA 19 SBUV/2 extend the time series through 2014. A comparison of v8.6

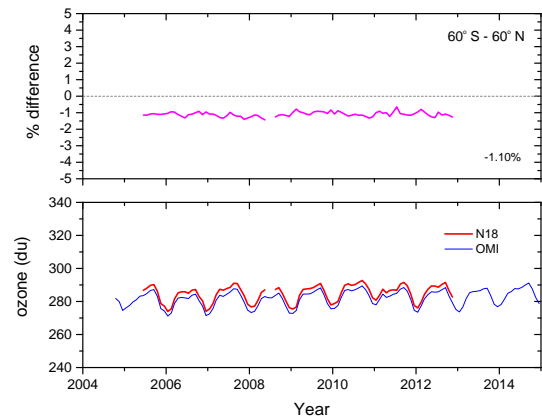


**Figure 2.** A comparison of OMI ozone with average ozone from an ensemble of 76 Northern Hemisphere Dobson–Brewer stations, with linear fit also shown. Weekly mean percent difference of OMI ozone minus ground-based ozone is plotted.

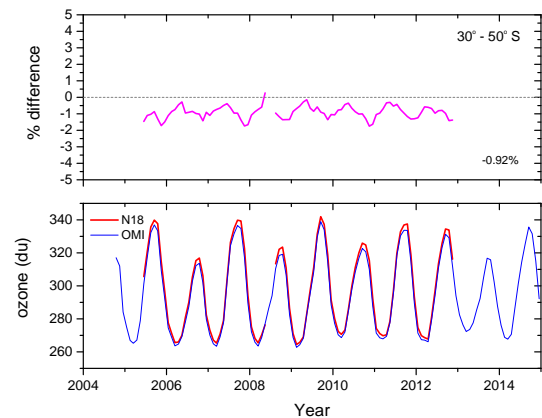
total ozone with the Brewer–Dobson network showed agreement to within 1 % over the 30-year period of comparison (Labow et al., 2013).

Figure 3 compares ozone measured by OMI with that measured by one of the instruments, the SBUV/2 on NOAA 18, which was operational and in a near-noon orbit over most of the OMI time period. (Data from the NOAA 16 instrument, for example, are noisier and sometimes not available in the 2008–2012 period as the spacecraft orbit drifted through the terminator.) The monthly zonal average ozone area weighted for the latitude zone from 60° S to 60° N is plotted. Because ozone is derived from measurements of backscattered sunlight, data are not always available in winter months at latitudes above 60°. The lower panel in Fig. 3 shows the monthly average ozone measured by each instrument, while the upper panel shows the percent difference of OMI ozone minus N18 SBUV ozone. The important point is that the relative trend between OMI and N18 is less than 0.1 % per decade. The offset of  $-1.1\%$  is again mostly caused by the fact that the Bass–Paur ozone cross sections were used for the OMI processing while the Brion–Daumont–Malicet ozone cross sections were used for the SBUV v8.6 processing. The upcoming reprocessing of OMI data using a version 9 ozone algorithm will use the new cross sections and should reduce the bias seen in Fig. 3.

Figures 4 and 5 show similar comparisons for the southern midlatitudes (30 to 50° S) and for the northern midlatitudes (30 to 50° N) respectively. In each case the amplitude of the annual cycle is somewhat bigger than for the global average since annual variation in the two hemispheres largely cancels in the global average. This is reflected in the percent difference plot as an annual cycle in the difference of about 1 %. The relative trend of OMI vs. NOAA 18 SBUV/2 is very small, no more than 0.1 % per decade when a linear fit is done for the difference plot (upper panel in each plot).

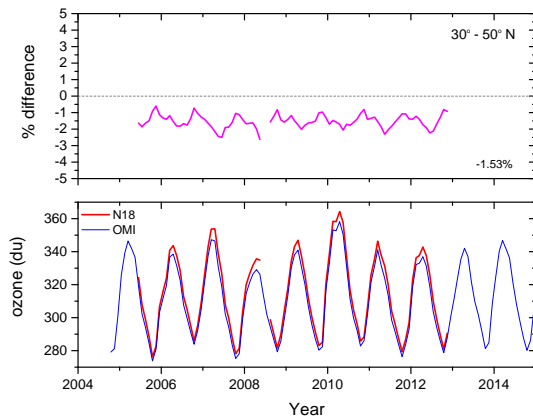


**Figure 3.** The ozone time series averaged from 60° S to 60° N for OMI and for the SBUV/2 on NOAA 18 are shown in the bottom plot. The percent difference in the upper plot shows that OMI ozone had very little trend relative to N18 but had an average bias of  $-1.1\%$ .

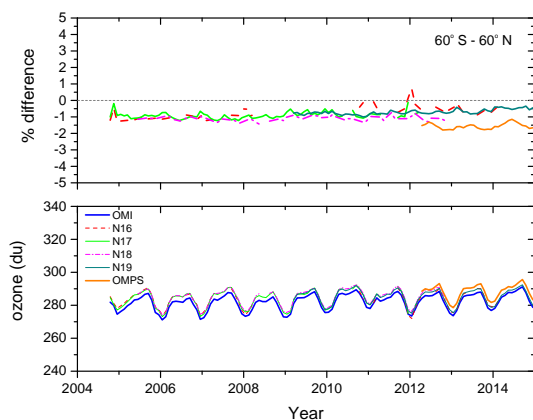


**Figure 4.** A similar time series albeit averaged from 30 to 50° S shows that ozone in the Southern Hemisphere was also stable relative to N18 with a seasonal dependence of about 1 %.

Figure 6 presents a comprehensive picture of OMI ozone relative to that from the four NOAA instruments, as well as a comparison with the initial processing of data from the OMPS nadir mapper on Suomi NPP. Comparisons of the data records from the SBUV instruments with other instruments are discussed in the Frith et al. (2014) validation paper. Here, as before, global average ozone from 60° S to 60° N is plotted as well as percent difference for each instrument. The first thing to note is the high degree of consistency of the four NOAA instruments. Not counting the OMPS data which have yet to be processed using a final calibration, the average trend of OMI relative to SBUV was  $+0.45\%$  decade<sup>-1</sup> and the average bias was  $-0.9\%$ . Since at the 95 % confidence level the uncertainty in the relative trend is  $\pm 0.22\%$  decade<sup>-1</sup>, the trend would be considered statistically significant. But the reality is that, at the half per-



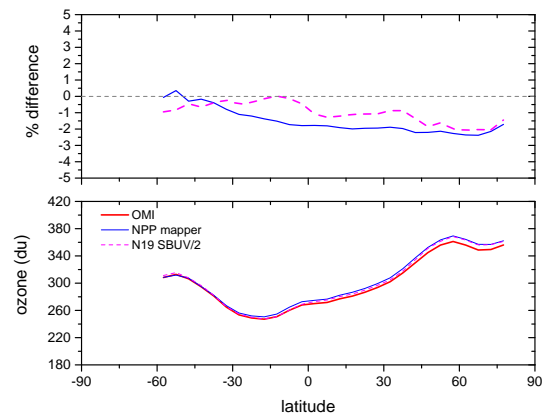
**Figure 5.** A similar time series albeit averaged from 30 to 50° N shows that ozone in the Northern Hemisphere was also stable relative to N18 but had a somewhat higher bias.



**Figure 6.** The OMI ozone time series averaged over the zone 60° S to 60° N is compared with ozone from four SBUV/2 instruments on NOAA satellites and with the OMPS mapper on Suomi NPP.

cent per decade level, it is not possible to say whether the SBUV trend is more accurate than the OMI trend.

While Figs. 4 and 5 show that the trend of OMI relative to SBUV was nearly identical in the southern and northern hemispheres, notice that the bias is different in the two hemispheres. The bias at southern midlatitudes was  $-0.92\%$ , while the bias in the northern midlatitudes was  $-1.53\%$ . This is examined more closely in Fig. 7, which shows the average ozone and percent difference as a function of latitude for the month of June 2013. Relative to the NOAA 19 SBUV/2 ozone data, OMI is only about  $0.5\%$  lower in the  $15\text{--}60^\circ\text{S}$  region, but it is as much as  $2\%$  lower near  $60^\circ\text{N}$ . The question then is, is the source of the difference a latitude-dependent error in OMI, in NOAA 19, or both? And is the difference instrumental or algorithmic? The OMI-TOMS retrieval uses wavelengths longer than  $315\text{ nm}$  to derive total column ozone, while the SBUV algorithm uses wavelengths shorter than  $310\text{ nm}$  to retrieve an ozone profile and then inte-



**Figure 7.** Latitude dependence of OMI relative to N19 SBUV/2 and the NPP OMPS mapper for June of 2013.

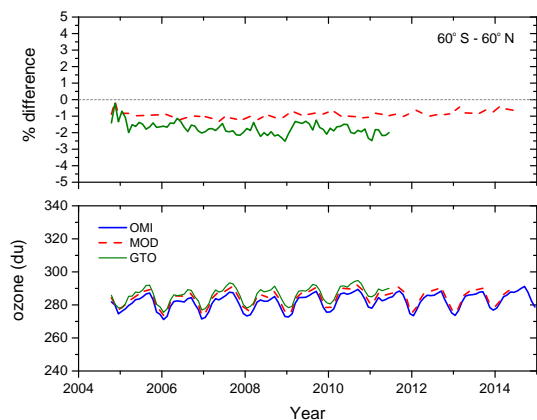
grates the profile to determine total column ozone. In principle the SBUV retrieval should be more accurate, particularly at high solar zenith angles. But the highest solar zenith angles in June are in the Southern Hemisphere, where the difference is only about  $0.5\%$ .

June of 2013 was chosen for this comparison because data were also available from the NPP OMPS nadir mapper, an instrument quite similar to OMI. While the final calibration for OMPS has yet to be determined, the algorithm used to derive total column ozone is very similar to the OMI-TOMS algorithm. This should help eliminate the algorithm as the source of the latitude dependence. In the Fig. 7 percent difference plot the NPP mapper (the solid blue curve) shows a latitude dependence similar to that for SBUV. This suggests (but does not prove) that there might be a small instrumental effect in OMI that leads to the observed hemispheric asymmetry.

#### 4 Comparison with merged data sets

While the comparisons so far have been with data from NASA and NOAA instruments, we can do similar comparisons with ozone instruments on European satellites to see if the behavior of OMI ozone displays similar patterns. The European satellite-borne sensors GOME/ERS-2 (1995–2011), SCIAMACHY/ENVISAT (2002–2012), and GOME-2/METOP-A (2007–present) have provided global total ozone measurements for the last 17 years. The GTO (GOME type Total Ozone) merged ozone data record combines those measurements into a continuous and homogeneous monthly mean time series (Coldewey-Egbers et al., 2015). In this study we use the most recent version of the GTO data record that has been developed within the framework of the European Space Agency's Climate Change Initiative (ESA-CCI, <http://www.esa-ozone-cci.org>). It incorporates the ozone data products retrieved using the GOME direct fitting algorithm (GODFIT; Lerot et al., 2014) and covers the period from March 1996 to June 2011.





**Figure 8.** The MOD (merged ozone data) based on SBUV/2 instruments and the GTO (GOME type Total Ozone) merged ozone based on GOME instruments and SCIAMACHY are compared with OMI.

In Fig. 8 OMI ozone averaged from 60° S to 60° N is compared with the v8.6 MOD time series based on our best-effort merger of the NASA SBUV/2 data (Frith et al., 2014) and with the GTO time series described above. The OMI bias relative to GTO is a bit larger,  $-1.7\%$  vs.  $-1.0\%$  for MOD over the same time period. These results are consistent with the result of comparisons shown in Chiou et al. (2014). While OMI has almost no trend relative to MOD over the 2004–2011 time period, the trend relative to GTO is  $-0.85\%$  decade<sup>-1</sup>. This of course implies that the GTO time series ozone increases about  $0.8\%$  decade<sup>-1</sup> relative to the MOD ozone. Is this significant? Given the difficulty of maintaining long-term calibration of multi-instrument data sets,  $1\%$  decade<sup>-1</sup> is probably the best anyone can do, and these differences are within the range of uncertainty.

## 5 Conclusions

OMI has proven to be one of the most stable ozone instruments that has been flown on a NASA satellite. Comparison with a network of 76 Northern Hemisphere ground-based Dobson–Brewer instruments shows very good agreement over a 10-year comparison period. The bias of OMI relative to other observations of about  $1.5\%$  is due mostly to the use of the older Bass–Paur ozone cross sections.

OMI data were compared with the version 8.6 processing of data from SBUV/2 instruments on NOAA 16, 17, 18, and 19. For this processing the radiances for each SBUV/2 instrument were carefully analyzed and adjusted to create a consistent ozone data series suitable for trend analysis. The resulting total ozone time series agreed well with other satellite series and with the ground network. Relative to the SBUV time series OMI shows a small time dependence of  $+0.45\%$  decade<sup>-1</sup> and an average bias of  $-0.9\%$ . One odd result that is not completely understood is that the bias of OMI relative to SBUV and to OMPS was slightly larger in

the Northern Hemisphere than in the Southern Hemisphere, by about  $0.5\%$ .

When OMI was compared with the European realization of a multi-instrument ozone time series, the GTO data set, there was a small trend of about  $-0.85\%$  decade<sup>-1</sup> and a slightly larger bias than for the NASA MOD data set.

Our conclusion is that OMI continues to be a high-quality ozone data set usable for trend analysis provided the later (post-2008) data are screened for row anomaly effects. The trends of OMI ozone relative to the merged data sets, MOD and GTO, were all less than  $1\%$  decade<sup>-1</sup>, which is arguably the best anyone can do with the present instrument systems.

## Data Availability

Data from Aura are easily available online from the Goddard Data and Information Services Center (DISC): <http://disc.sci.gsfc.nasa.gov/Aura>.

The OMI data product used here is designated OMTO3. The OMI DOAS ozone product is also available from this site.

The OMTO3 level 3 gridded ozone data are also available from the Goddard anonymous FTP account: <ftp://toms.gsfc.nasa.gov>. The data are in the directory `pub/omi/data/ozone`. Preliminary data for the NPP OMPS mapper are also available from this anonymous FTP site, in the directory `pub/omps_tc/data/ozone`. The v8.6 MOD data are available from [http://acdb-ext.gsfc.nasa.gov/Data\\_services/merged](http://acdb-ext.gsfc.nasa.gov/Data_services/merged).

*Acknowledgements.* The Dutch–Finnish-built OMI instrument is part of the NASA EOS Aura satellite payload. OMI total ozone column data were processed at NASA and jointly analyzed by the US–Dutch–Finnish science team. The version 8.6 SBUV data set was created under NASA’s MEASUREs program for the production of multi-instrument data sets. We thank the many people who have worked over the years to understand the behavior of OMI and of the SBUV instruments in order to produce accurate ozone data products.

Edited by: V. Sofieva

## References

- Bass, A. M. and Paur, R. J.: The ultraviolet cross-sections of ozone. I. The measurements, in: Proc. Quadrennial Ozone Symp., Halkidiki, Greece, 3–7 September, 1984, edited by: Zerefos, C. and Ghazi, A., Reidel, Dordrecht, 606–616, 1984.
- Bhartia, P. K.: Total ozone from backscattered ultraviolet measurements, in: Observing Systems 20 for Atmospheric Composition, L’Aquila, Italy, 20–24 September, 2004, edited by: Visconti, G., Di Carlo, P., Brune, W., Schoeberl, W., and Wahner, A., Springer, 48–63, 2007.
- Brion, J., Chakir, A., Daumont, D., Malicet, J., and Parisse, C.: High resolution laboratory absorption cross section of O<sub>3</sub> temperature effect, Chem. Phys. Lett., 213, 610–612, 1993.

- Chiou, E. W., Bhartia, P. K., McPeters, R. D., Loyola, D. G., Coldewey-Egbers, M., Fioletov, V. E., Van Roozendaal, M., Spurr, R., Lerot, C., and Frith, S. M.: Comparison of profile total ozone from SBUV (v8.6) with GOME-type and ground-based total ozone for a 16-year period (1996 to 2011), *Atmos. Meas. Tech.*, 7, 1681–1692, doi:10.5194/amt-7-1681-2014, 2014.
- Coldewey-Egbers, M., Loyola, D. G., Koukouli, M., Balis, D., Lambert, J.-C., Verhoelst, T., Granville, J., van Roozendaal, M., Lerot, C., Spurr, R., Frith, S. M., and Zehner, C.: The GOME-type Total Ozone Essential Climate Variable (GTO-ECV) data record from the ESA Climate Change Initiative, *Atmos. Meas. Tech.*, 8, 3923–3940, doi:10.5194/amt-8-3923-2015, 2015.
- Dobber, M., Kleipool, Q., Dirksen, R., Levelt, P., Jaross, G., Taylor, S., Kelly, T., and Flynn, L.: Validation of ozone monitoring instrument level-1b data products, *J. Geophys. Res.*, 113, D15S06, doi:10.1029/2007JD008665, 2008.
- Frith, S. M., Kramarova, N. A., Stolarski, R. S., McPeters, R. D., Bhartia, P. K., and Labow, G. J.: Recent changes in total column ozone based on the SBUV Version 8.6 merged ozone data set, *J. Geophys. Res.*, 119, 9735–9751, doi:10.1002/2014JD021889, 2014.
- Labow, G., McPeters, R., Bhartia, P. K., and Kramarova, N.: A comparison of 40 years of SBUV measurements of column ozone with data from the Dobson/Brewer network, *J. Geophys. Res.*, 118, 7370–7378, doi:10.1002/jgrd.50503, 2013.
- Lerot, C., VanRoozendaal, M., Spurr, R., Coldewey-Egbers, M., Kochenova, S., vanGent, J., Koukouli, M., Balis, D., Lambert, J., Granville, J., and Zehner, C.: Homogenized total ozone data records from the European sensors GOME/ERS-2, SCIAMACHY/Envisat and GOME-2/MetOp-A, *J. Geophys. Res.*, 119, D07302, doi:10.1002/2013JD020831, 2014.
- Levelt, P. F., Hilsenrath, E., Leppelmeier, G., van den Oord, G., Bhartia, P. K., Tamminen, J., de Haan, J., and Veefkind, J.: Science Objectives of the Ozone Monitoring Instrument, *IEEE Trans. Geosci. Remote Sens.*, 44, 1199–1208, doi:10.1109/TGRS.2006.872336, 2006.
- Malicet, J., Daumont, D., Charbonnier, J., Parisse, C., Chakir, A., and Brion, J.: Ozone UV spectroscopy II. absorption cross-sections and temperature dependence, *J. Atmos. Chem.*, 21, 263–273, 1995.
- McLinden, C. A. and Fioletov, V.: Quantifying stratospheric ozone trends: complications due to stratospheric cooling, *Geophys. Res. Lett.*, 38, L03808, doi:10.1029/2010GL046012, 2011.
- McPeters, R. D., Kroon, M., Labow, G., Brinksma, E., Balis, D., Petropavlovskikh, I., Veefkind, J., Bhartia, P. K., and Levelt, P.: Validation of the Aura Ozone Monitoring Instrument total column ozone product, *J. Geophys. Res.*, 113, D15S14, doi:10.1029/2007JD008802, 2008.
- McPeters, R. D., Bhartia, P. K., Haffner, D., Labow, G., and Flynn, L.: The version 8.6 SBUV ozone data record: an overview, *J. Geophys. Res.*, 118, 1–8, doi:10.1002/jgrd.50597, 2013.
- Park, J. H., Ko, M., Jackman, C., Plumb, R., Kaye, J., and Sage, K.: Models and Measurements Intercomparison II, edited by: Park, J., Ko, M., Jackman, C., Plumb, R., Kaye, J., and Sage, K., Hampton Virginia, NASA/TM-1999-209554, 1999.
- Veefkind, J. P., De Haan, J., Brinksma, E., Kroon, M., and Levelt, P.: Total ozone from the Ozone Monitoring Instrument (OMI) using the OMI-DOAS technique, *IEEE T. Geosci. Remote*, 44, 1239–1244, 2006.