

Replacing monitored glaciers undergoing extinction: a new measurement series on La Mare Glacier (Ortles-Cevedale, Italy)

LUCA CARTURAN

Department of Land, Environment, Agriculture and Forestry, University of Padova, Agripolis, Viale dell'Università 16, 35020 Legnaro, Padova, Italy

Correspondence: Luca Carturan <luca.carturan@unipd.it>

ABSTRACT. Glacier mass balance is a key variable for the monitoring strategies of the Earth climate system, but the continuation of long-term observations is now endangered by the impending extinction of several monitored glaciers. It is therefore advisable to start new observations on neighbouring glaciers that are more likely to survive into the next few decades. These glaciers will be located at higher altitude, have larger elevation range, thus preserving an accumulation area and have good spatial representativeness. Glaciers with these characteristics may pose some problems and are more demanding for mass-balance measurements and calculations, due to their size and presence of remote and inaccessible areas, further complicated by the complex morphology and high-lateral gradients of mass balance. I present the new mass-balance series for La Mare Glacier, started in 2003 to replace the long-term monitored and rapidly vanishing Careser Glacier in the Ortles-Cevedale Group (Eastern Italian Alps). Direct glaciological mass-balance observations have been complemented by measurements with the hydrological method and, as recommended by the World Glacier Monitoring Service, validated using the geodetic method. The collected data are useful for testing and optimising two techniques proposed in the literature for extrapolating measurements to inaccessible areas.

KEYWORDS: glacier mass balance, vanishing glaciers

1. INTRODUCTION

Sustained negative mass balance and increasing mass loss rates are affecting most glaciers subject to long-term mass-balance observations (WGMS, 2015). Many of them have experienced a strong reduction or a complete disappearance of the accumulation area over recent decades, and are therefore expected to rapidly vanish in the near future. Given the importance of glacier mass balance as a key variable for the monitoring strategies of the Earth climate system (Zemp and others, 2005; WGMS, 2008), the World Glacier Monitoring Service (WGMS) suggested early parallel observations on larger and higher-reaching glaciers, in order to replace the monitored glaciers undergoing extinction (Zemp and others, 2009).

The replacement glaciers for those that are currently monitored can have very different behaviour, imbalance with current climatic conditions and spatial representativeness, even when the two glaciers are close to each other (e.g. Kuhn and others, 1985; Carturan and others, 2013a, b), making the replacement problematic. In addition, larger glaciers extending to higher elevations may pose issues related to size, altitude, geometry and existence of inaccessible areas (steep slopes, crevasses and séracs), thus being more challenging for mass-balance measurements, compared with smaller glaciers with simpler geometry chosen in the past. Additional difficulties stem from the need to interpolate/extrapolate over unsampled areas, and increasing altitude often implies higher wind speed and more complex snow redistribution patterns.

In the Italian Alps, continuous mass-balance series >10 a exist for nine glaciers. Monitored glaciers with series starting before the 2000s are small (mean area < 1 km²) and characterised by low median elevation and low elevation range

(376 m on average). In the past decade, these glaciers almost completely lost their accumulation area and are decaying or close to extinction (Carturan and others, 2016). The most striking example is provided by the Careser Glacier, in the Ortles-Cevedale Group, which is rapidly shrinking and disintegrating (Carturan and others, 2013a).

I present the 2003–14 mass-balance series of La Mare Glacier, which was selected to ensure future mass-balance observations in the area of the vanishing Careser Glacier (Carturan and others, 2009a). Different methods for the determination of the annual mass balance have been used and discussed. In particular, the methods proposed by Carturan and others (2009b) and by Kuhn and others (2009) for extrapolating glaciological measurements to unsampled areas were tested and optimised. Results from mass-balance measurements were compared with those from the neighbouring Careser Glacier and from other monitored glaciers in the Ortles-Cevedale Group, in order to assess the significance of this new observation series in the regional context.

2. THE LA MARE GLACIER

The La Mare Glacier (46.4333°N; 10.6362°E, World Glacier Inventory ID number: I4L00102517; WGMS, 1989) is a valley glacier with compound basin located in the central part of the Ortles-Cevedale Group (Eastern Italian Alps; Figs 1, 2). Its current area is 3.501 km² (2013), 13% smaller than in 2003, when the mass-balance measurements were started. Its elevation ranges from 2662 to 3769 m a.s.l. (Mount Cevedale) and the median elevation is 3285 m a.s.l. The lower edge of the glacier is irregularly shaped and presents three main tongues. The upper edge reaches the highest peaks of the glacier's catchment, which are all above 3500

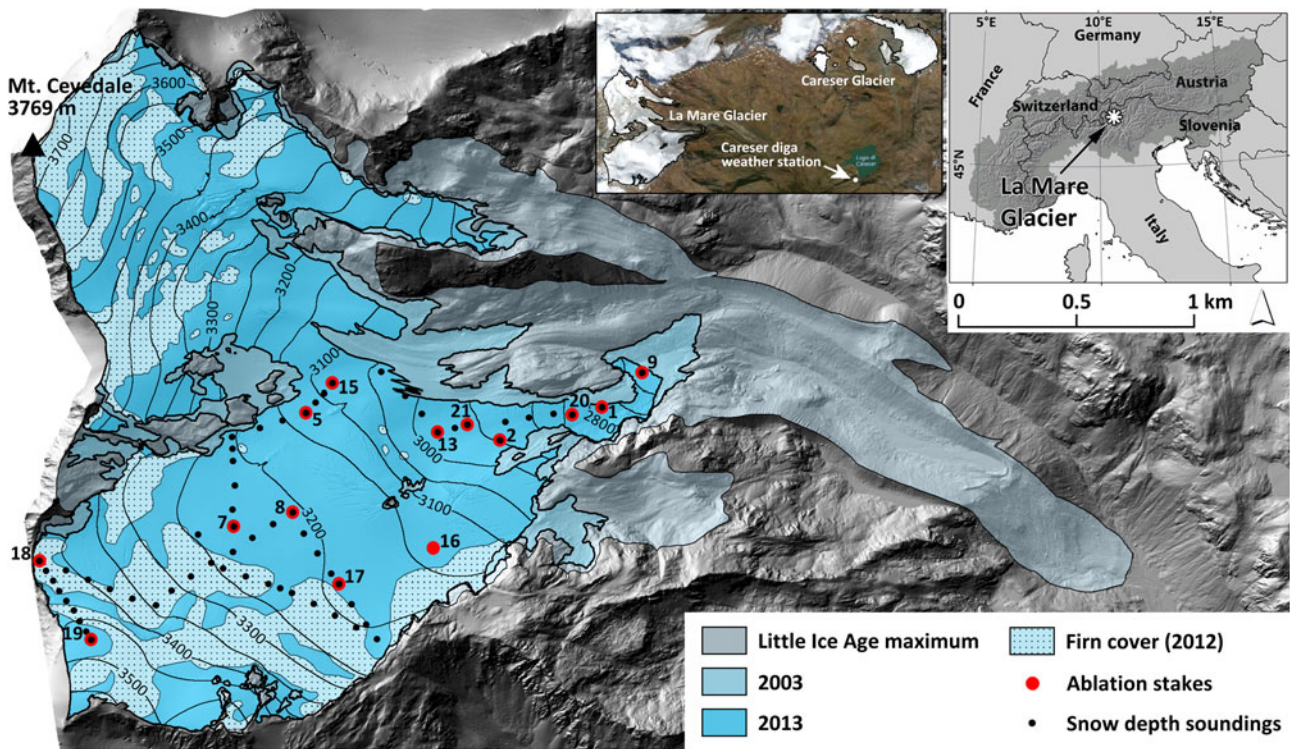


Fig. 1. Geographical setting, extent in three different periods and measurement network of La Mare Glacier. The 2012 multi-year firm cover is reported as it represents the average extent of the accumulation area in the period from 2003 to 2014.

m a.s.l. Continuous shrinking of the glacier is leading to its separation into two sub-units. The northern unit (1.44 km²) is steep, exposed to the south-east and has a median elevation of 3412 m a.s.l. The southern unit, which feeds the longest and lower-reaching ablation tongue, is flatter and larger (2.06 km²), mainly exposed to the north-east and with a median elevation of 3216 m a.s.l.

The glacier is characterised by the presence of inaccessible areas with steep slopes, crevasses and seracs. It is fed mainly during winter (October–May) by direct precipitation and wind-drifted snow; avalanche contribution and topographic shading are of minor importance, except for small areas close to the margins. The debris cover is negligible and confined to the lower limit of the ablation area and to

small median moraines. Meltwaters feed the Noce Bianco, which drains into the Noce River, one of the tributaries of the Adige River.

Climatically, the Ortles-Cevedale massif is near the main so-called ‘inner dry Alpine zone’ (Frei and Schär, 1998), being characterised by the lowest precipitation in the entire European Alps (~500 mm a⁻¹ at the floor of the Venosta Valley). Precipitation increases southward, however, reaching 900 mm a⁻¹ in the valleys at the southern edge of Ortles-Cevedale, while total precipitation of 1300–1500 mm a⁻¹ has been estimated at 3000–3200 m a.s.l. in the area of the La Mare Glacier (Carturan, 2010; Carturan and others, 2012). The mean annual 0°C isotherm is located at ~2500 m a.s.l.

As with nearly all glaciers in the European Alps, La Mare has experienced a strong reduction since the Little Ice Age maximum, whose extent has been reconstructed from geomorphological evidence and has been dated ~1600 AD (Carturan and others, 2014). The glacier is now 44% smaller and 2.2 km shorter than in that period. However, unlike the neighbouring long-term monitored Careser Glacier (5 km east of La Mare), which has retreated uninterrupted since the end of the 19th century, the La Mare Glacier responded to climatic variations of the past 120 a, with alternating periods of retreat and re-advance, the latter peaking in 1897, 1923 and 1986 (Carturan and others, 2013a, 2014). In spite of its high median elevation, the glacier currently shows evidence of imbalance. The firm covers only the upper third of the glacier (Fig. 1), which shows continuous retreat of its lower edge, new bedrock outcrops and significant decrease of the surface velocities, from 6.3 m a⁻¹ on average in 2005, to 3.1 m a⁻¹ on average in 2013, as evaluated from repeat GPS surveys of the ablation stakes (Fig. 3).



Fig. 2. The La Mare Glacier on 25 August 2011.

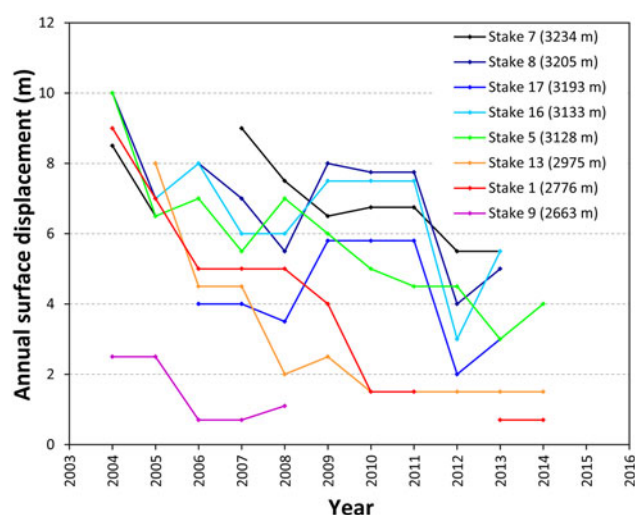


Fig. 3. Annual surface displacement of eight ablation stakes (the number of the stakes is reported in Fig. 1).

3. MASS-BALANCE MEASUREMENTS AND CALCULATIONS

3.1. Glaciological method

Considering the physical characteristics of the La Mare Glacier, the available resources and the feasibility of long-term observations, it was decided to start glaciological mass-balance measurements focusing on the southern branch of the glacier. Point measurements of annual mass balance in the ablation area consist of repeat readings of 2 m aluminium ablation stakes, drilled into the ice using a hand drill. Ten ablation stakes were installed in 2003, increasing to 16 in 2005, and decreasing to 13 in the last few years (Fig. 1). Ablation stakes drilled in the firn did not provide reliable readings because of sinking, occurring also when using plastic or wooden plugs at the lower end of stakes. Therefore, ablation measurements from these stakes have been discarded. The positions of the ablation stakes were surveyed each year in September using GPS, for monitoring variations in the surface velocity. In late summer each ablation stake was lengthened applying a threaded bar to its top, in order to prevent burial by snow before the last measurements at the end of the balance year.

Snow depth soundings and density measurements in pits have been used for winter balance measurements, carried out in May, and for annual mass-balance measurements in the accumulation area. The soundings were done using aluminium or carbon fibre probes, and they were arranged along transects with 50 m spacing (Fig. 1). Particular attention was given to the area of the glacier with highest net accumulation, as suggested by Kuhn and others (1999). Repeat firn depth soundings served for annual mass-balance determinations in the part of the ablation area that was covered by firn. The snow cover and the transient snowline were mapped every 2–3 weeks during the ablation season, using terrestrial photographs, GPS surveys and Landsat imagery (<http://glovis.usgs.gov>). The snowcover maps were obtained by manually digitising the snow limit using GIS software (ESRI ArcMap™); the same software was used for mass-balance calculations.

Winter mass balance (B_w) calculations were performed using second-degree polynomial functions of winter balance

vs. elevation, integrating this function over the total glacier area. The function was calculated by linear regression of sampled points located in areas with ‘normal’ accumulation, i.e. excluding the areas with too high or too low accumulation as visible in the snowcover maps. Above the highest sampled point, the winter balance was assumed constant as suggested by Escher-Vetter and others (2009). The ‘profile’ method has been preferred to the ‘contour’ method in consideration of the spatial distribution of sampled points and of practicable areas. As suggested by Escher-Vetter and others (2009), polynomial functions have been preferred to linear regressions because they better capture the elevation trend of B_w .

Annual mass-balance (B_a) calculations were carried out using the contour method, which consists of drawing by hand the mass-balance isolines. Point measurements of b_a were combined with knowledge of the spatial distribution of mass balance achieved by repeat mapping of the snow cover and equilibrium line altitude (ELA), which display a recursive pattern controlled by the local topography (e.g. Helfricht and others, 2014). Over unmeasured areas, additional constraints for the manual drawing of B_a isolines were obtained calculating the cumulative mass balance at several points placed along the transient snowline, which was mapped at different dates during the ablation season. This was achieved by linear regression of cumulative mass balance vs. altitude at the ablation stakes, from the dates of snowline observations (which correspond to the dates of ablation stake readings) to the date of the last survey of the mass-balance year. The use of mass-balance gradients over areas where no stakes are available was suggested, among others, by Haefeli (1962), Jansson (1999) and Carturan and others (2009b). The summer mass balance (B_s) was calculated as the difference between B_a and B_w . A combination of conventional and reference-surface balance is reported (glacier topography and area were updated in 2006 and 2011), using the floating-date time system (Cogley and others, 2011).

The mass balance over the northern (unmeasured) branch of the glacier was obtained through the transfer of annual mass-balance profiles measured on the southern branch, as proposed by Kuhn and others (2009):

$$b_u(h) = b_{\text{ref}}(h + D), \quad (1)$$

where $b_u(h)$ is the mass-balance profile of the unmeasured glacier as a function of altitude (h), and $b_{\text{ref}}(h + D)$ is the mass-balance profile of the measured ‘reference’ glacier, shifted by the difference in median elevations (M) of the two glaciers, calculated as:

$$D = M_{\text{ref}} - M_u. \quad (2)$$

According to this procedure, D should express the vertical shift of $b(h)$ due to the different topographic and climatic factors existing in the two glaciers, in this case principally the exposure to solar radiation. In this way it was possible to calculate the mass balance of the entire glacier and to compare the results with those obtained from the geodetic and hydrological methods.

3.2. Geodetic method

Two high-resolution aerial LiDAR surveys have been used for calculating the geodetic mass balance of La Mare Glacier.

They were carried out at the end of the ablation season, the first on 17 September 2003 and the second on 22 September 2013, with an average point density of 0.6 and 1 points per square metre respectively, and a complete coverage of the glacier. DTMs with cell size of 10 m × 10 m were generated from the two LIDAR point clouds, using the MicroStation™ and ESRI ArcMap™ software packages.

The relative accuracy and consistency of the two DTMs have been checked on stable areas outside the glacier, revealing that no further co-registration was needed as no residual shift exists between them. The standard deviation of elevation differences outside the glacier is 0.206 m.

The total volume change ΔV (m³) from 2003 to 2013 was calculated in Arcmap as:

$$\Delta V = \overline{\Delta z} \cdot A_{2003} \quad (3)$$

where $\overline{\Delta z}$ is the average elevation change between the DTM_{2003} and DTM_{2013} (Fig. 4) over the 2003 area (A_{2003}). The area-averaged specific geodetic mass-budget rate (m w.e. a⁻¹), referred to as ‘average geodetic mass balance’ hereafter, was calculated as:

$$\dot{M} = \frac{\Delta V \cdot \rho}{\bar{A} \cdot t} \quad (4)$$

where ρ is the mean density, \bar{A} is the average of the A_{2003} and A_{2013} areas, and t is the time interval (10 a) between the two periods. The firm cover of 2003 and 2013, mapped as described for the snow cover (previous Section), were used to calculate ρ as a weighted average, assigning 900 kg m⁻³ to the areas with unchanged surface (87% of the glacier) and 650 kg m⁻³ to the areas where firm was removed or formed (13% of the glacier) and using the respective areas as weights. The obtained ρ was 851 kg m⁻³. For comparison purposes, the average geodetic mass balance was calculated for the entire glacier and for the southern and northern branches separately.

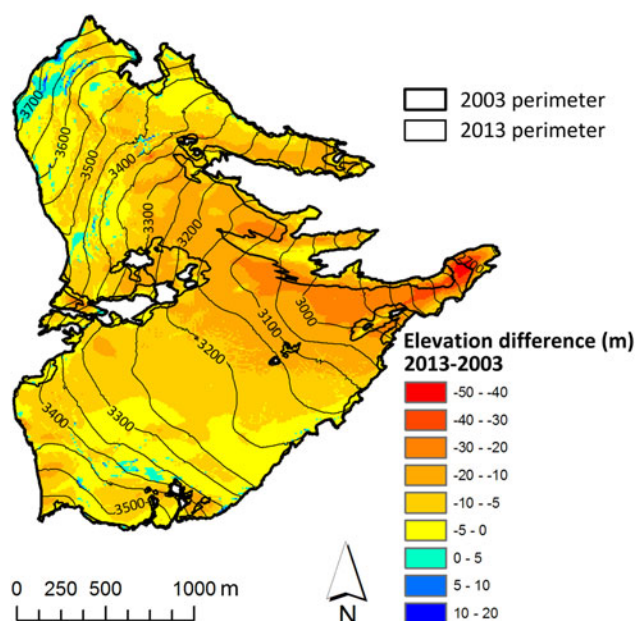


Fig. 4. Elevation difference between the years 2013 and 2003. The contours represent the 2003 surface topography.

3.3. Hydrological method

The availability of a high-altitude weather station (Careser diga, 2605 m a.s.l.; Fig. 1), where automatic temperature and precipitation measurements are supplemented by daily manual observation of fresh snow and total snow heights, enabled a reliable calculation of precipitation inputs over the glaciated areas in this part of the Ortles-Cevedale Group. As described in detail by Carturan and others (2012), manual snow observations were used for the correction of the automatic solid precipitation measurements at Careser diga. The precipitation was then extrapolated at different elevations using a monthly vertical precipitation gradient, calculated by linear regression of precipitation vs. altitude between the Careser diga and the Cogolo Pont (1200 m a.s.l., 6.3 km south of Careser diga) weather stations.

In summer 2007 a stream gauging station was setup at the outlet of the Noce Bianco a Pian Venezia catchment, in a natural section (Fig. 5). This 8.4 km² catchment includes the La Mare Glacier, which covers 42% of the area, and ranges in altitude from 2300 m to 3769 m a.s.l. (median altitude = 3079 m a.s.l.). Water stage was recorded at 15 min intervals by a water pressure recorder, housed inside a metal pipe to shield it from sediments. Discharge was repeatedly measured, in particular during the ablation season, for defining the stage-discharge rating curve and for checking its stability over time. The salt dilution method was used for discharge measurements.

The annual hydrological mass balance of La Mare Glacier was calculated as:

$$\Delta S = P - R - E \quad (5)$$

where ΔS is the change in glacier water storage and P , R and E are the total precipitation, runoff and evaporation, respectively, in the catchment. P has been calculated from the Careser diga and Cogolo Pont weather stations and R has been derived from the runoff data collected at the outlet. E was not measured in the field and its estimate was rather uncertain, given its high spatial and temporal variability (e.g. Strasser and others, 2008). Hence, in the absence of detailed and distributed field data, it was preferred to explore the range of values reported for annual E in catchments with similar characteristics in the Alps (i.e. 175 ± 75 mm a⁻¹; Hoinkes and Lang, 1962; Lang, 1981 and references therein; Moser and others, 1986; Braun and others, 1994; Escher-Vetter and others, 2005). As the bedrock is composed of impermeable rocks (mica schists), and the thickness of deposits and soils is generally low, the water storage in sub-surface aquifers was neglected.

3.4. Estimation of uncertainty

The uncertainties of the glaciological and geodetic mass-balance estimates obtained on La Mare Glacier have been assessed on the basis of the conceptual and statistical toolsets proposed by Zemp and others (2013). In the southern part of the glacier, the random error related to point measurements can be quantified in 100 mm w.e. a⁻¹, as obtained from repeatability tests (33 repeated measurements over 100 m² areas around the measurement sites). The random error related to the spatial integration was evaluated based on the difference between the observed and calculated mass balance at 24 sites along the transient snowline, which have been excluded from the calculation of the

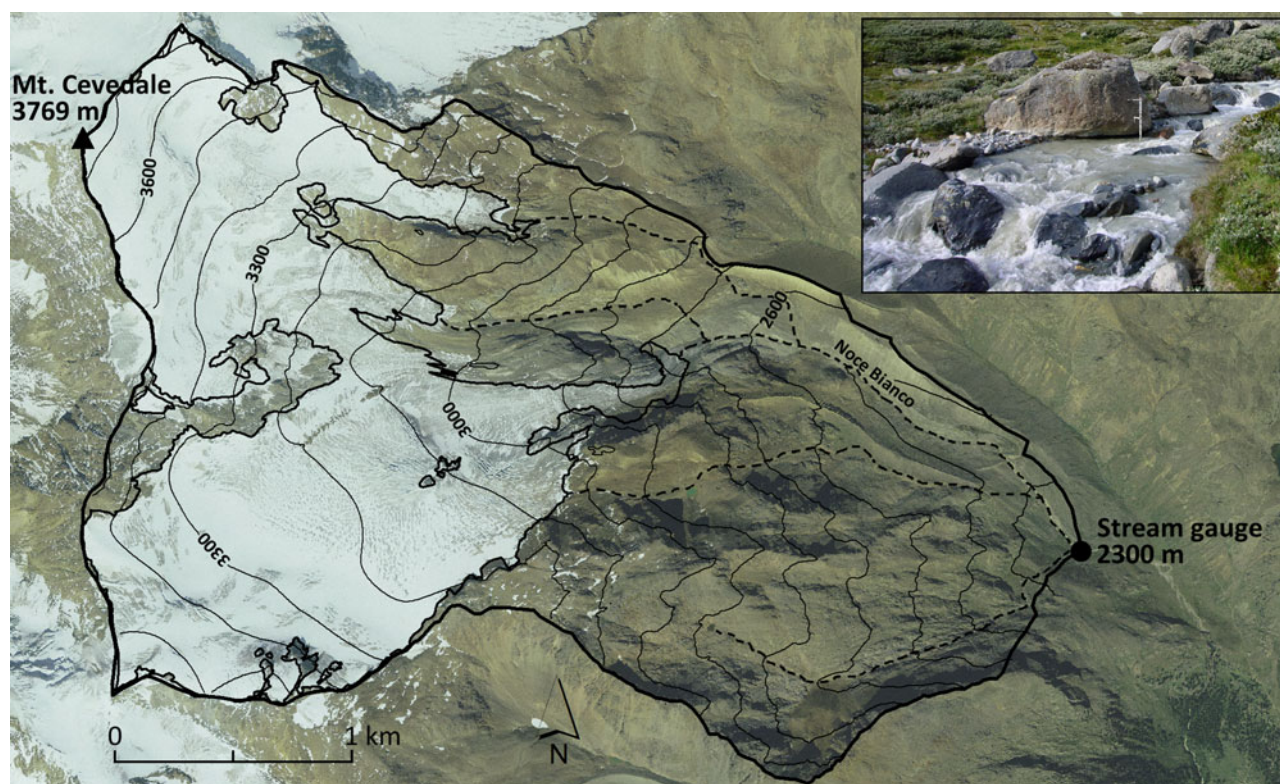


Fig. 5. The Noce Bianco a Pian Venezia catchment. The photo in the inset shows the outlet of the catchment.

mass-balance gradient, and is $240 \text{ mm w.e. a}^{-1}$. The two errors combined yield a total random error of $260 \text{ mm w.e. a}^{-1}$ for the direct glaciological method.

The uncertainty of the geodetic method can be quantified as $38 \text{ mm w.e. a}^{-1}$, resulting from the integration of the uncertainty related to spatial autocorrelation of the elevation differences between the 2003 and 2013 DTMs ($15 \text{ mm w.e. a}^{-1}$, quantified following Rolstad and others, 2009), and of the uncertainty related to density conversion ($35 \text{ mm w.e. a}^{-1}$, mean random error reported by Zemp and others, 2013).

The random error in total precipitation estimates, assessed comparing winter balance measurements on the glacier and extrapolated precipitation from the Careser and Cogolo weather stations, is 100 mm a^{-1} . Combined with the random error in runoff measurements (25%) and the random error in evaporation (75 mm a^{-1}), yields a total uncertainty of 0.4 m a^{-1} for the hydrological method.

4. RESULTS

The mass balance of La Mare Glacier (southern branch) was negative in the first 10 a of observations, close to zero in 2013 and positive in 2014 (Table 1; Fig. 6). The ELA was generally above the median elevation of the glacier (3216 m a.s.l. in 2013), and it was above the highest point of the glacier in 2003, 2006 and 2012. Linear regression of Accumulation Area Ratio (AAR) vs. B_a indicates that the balanced-budget AAR (AAR_0) is 0.53, while linear regression of ELA on B_a indicates that the balanced budget ELA (ELA_0) is 3165 m a.s.l. (Fig. 7). In the period from 2003 to 2014, B_a averaged $-0.756 \pm 0.260 \text{ m w.e. a}^{-1}$ and the average AAR was 0.28. In the same period, on the Careser Glacier the average B_a was $-1.777 \pm 0.200 \text{ m w.e. a}^{-1}$ (Fig. 8), with a mean AAR of 0.05.

The mass balance displays a consistent spatial pattern from year to year, which is mainly controlled by the elevation and wind redistribution. In particular, above $\sim 3200 \text{ m}$, the interaction of the undulating surface topography and dominant westerly winds leads to a mass-balance distribution pattern that is almost independent of elevation. Therefore, in most years, the late summer snow cover was typically patchy and the transient snowline was nearly perpendicular to the elevation contours (Fig. 6).

In the observation period, the average total precipitation in the accumulation season (October–May) was not significantly different from the long-term mean (+2% on average; Table 1). On the other hand, ablation seasons (June–September) were repeatedly warmer than average ($+0.7^\circ\text{C}$ on average). As already acknowledged by other authors (e.g. Zemp and others, 2008; Carturan and others, 2016; Huss and others, 2015) the imbalanced conditions of most glaciers in the European Alps is mainly attributable to decreased summer balance, rather than to changes in the accumulation season, and La Mare Glacier is no exception. However, increased winter precipitation in the last 2 a led to a notable increase of B_a , in particular in 2014 when the summer was also favourable, thanks to decreased mean temperature and frequent snowfall on the glacier.

The annual mass-balance profiles measured for the southern branch of the glacier were transferred to the unmeasured northern branch, using the procedure suggested by Kuhn and others (2009). According to this method, in the period from 2003 to 2014 the average northern branch B_a was $-0.872 \text{ mm w.e. a}^{-1}$, i.e. $116 \text{ mm w.e. a}^{-1}$ more negative than in the southern branch. An alternative formulation was tested, replacing the difference in the median elevation between the two parts (D , increased from 160 m in 2003 to 196 m in 2013) with the average difference in the transient snowline

Table 1. Mass-balance results on La Mare Glacier in the period from 2003 to 2014, according to different methods. Anomalies in the precipitation of the accumulation season and in the temperature of the ablation season are referred to the period from 1981 to 2010

Year	Southern branch			Northern branch			Entire glacier		Hydrological mass balance m w.e.	
	Oct–May P_{an} %	Citiu–Sep T_{an} °C	B_w m w.e.	B_s m w.e.	B_a m w.e.	ELA m	AAR	B_a m w.e.*		ELA m*
2002/03	-17	2.5	-2.271 ± 0.260	-1.698	-2.101	>3590	0.00	-2.196	>3769	>3769
2003/04	2	0.1	-0.708 ± 0.260	-1.799	-0.560	3286	0.21	-0.643	3635	3636
2004/05	-12	0.2	-1.079 ± 0.260	-1.926	-0.911	3309	0.19	-1.005	3607	3607
2005/06	-24	1.1	-1.053 ± 0.260	-1.505	-0.842	>3591	0.14	-0.961	>3769	>3769
2006/07	-30	-0.1	-1.044 ± 0.260	-1.741	-0.779	3311	0.17	-0.928	3576	3582
2007/08	-5	0.2	-0.804 ± 0.260	-1.918	-0.537	3282	0.25	-0.688	3533	3511
2008/09	65	1.1	-0.500 ± 0.260	-1.593	-0.357	3245	0.33	-0.438	3568	3304
2009/10	13	0.3	-0.417 ± 0.260	-1.519	-0.265	3236	0.34	-0.351	3443	3277
2010/11	5	1.1	-0.558 ± 0.260	-2.404	-0.295	3284	0.30	-0.450	3485	3458
2011/12	-23	1.6	-1.410 ± 0.260	-1.420	-1.049	>3586	0.06	-1.261	>3769	>3769
2012/13	10	1.0	-0.062 ± 0.260	-0.679	0.087	3197	0.56	-0.001	3303	3204
2013/14	35	-0.3	0.830 ± 0.260	-0.679	1.026	3012	0.86	0.911	3039	2996
Direct vs. geodetic comparison (m w.e. a ⁻¹ , period from September 2003 to September 2013)										
Mean direct			-0.763 ± 0.260		-0.551 (-0.880)			-0.673 (-0.813)		
Mean geodetic			-0.778 ± 0.038		-0.673			-0.733		

* Estimates obtained by the modified version of the method from Kuhn and others (2009), using the average difference in the snowline altitude D_s (values in brackets report the estimates using the difference in the median altitude D).

altitude ($D_s = 72$ m, as mapped in 13 different dates). Using D_s , the average northern branch B_a in the same period would be -0.549 mm w.e. a⁻¹ i.e. 207 mm w.e. a⁻¹ less negative than in the southern branch. The B_a of the entire glacier results -0.806 and -0.668 mm w.e. a⁻¹ using D and D_s respectively.

In the decade from September 2003 to September 2013, the average geodetic mass balance was in very close agreement with the glaciological method in the southern branch (Table 1), indicating that the direct mass-balance series does not require calibration (Huss and others, 2009; Zemp and others, 2013). According to the geodetic method, the northern branch had ~ 100 mm w.e. a⁻¹ less negative average mass balance compared with the southern branch, which is in closer agreement with estimates obtained using the glaciological mass-balance profile transferred using D_s instead of D (assuming negligible internal and basal mass exchanges).

The map of elevation changes from September 2003 to September 2013 (Fig. 4) shows that surface lowering prevailed at all altitudes, with few exceptions in crevassed areas and in small areas of wind-drifted snow accumulation, in particular close to the top of Mount Cevedale. A very rapid thinning rate, ranging from 2 to 4.5 ± 0.33 m a⁻¹, can be observed in the ablation area below 3000–3100 m, which corresponds to the part of the glacier with largest drop in the surface velocities (stakes 1 and 13 in Fig. 3). It is interesting to observe that the 0 to -5 ± 0.33 m a⁻¹ elevation change class almost perfectly traces the residual accumulation area (multi-year firm cover in Fig. 1).

The mass-balance values provided by the hydrological method were in good agreement with the direct method (Table 1). Underestimations by the hydrological method prevailed (4 out of 5 cases, ranging from -20 to -153 mm w.e. a⁻¹), but the difference was in the range of uncertainty of evaporation losses in most cases (150 mm a⁻¹), except for 2009 when it was slightly larger. In 2012 and 2013 it was not possible to calculate the hydrological mass balance, due to a flood event that damaged the gauging station.

5. DISCUSSION

Long-term high-quality mass-balance measurements on glaciers are demanding in terms of costs, time and expertise of the investigators. In addition they require, if possible, easy and safe access to the glaciers. For these reasons, in the past, the Italian glaciers selected for mass-balance measurements were for the most part small, with small elevation range, simple geometry and easily and safely accessible over their entire surface (Carturan and others, 2016). The interpolation and extrapolation of point measurements is generally easier for these types of glacier. These characteristics, however, are unfavourable for the future survival of measured glaciers, which have lost almost entirely their accumulation areas in the past years/decades. For these reasons, and following the recommendations from the WGMS, mass-balance observations were started in the 2000s over larger and higher-reaching glaciers of Ortles-Cevedale and Breonie Occidentali groups (Carturan and others, 2009a; Galos and others, 2015; <http://www.provincia.bz.it/wetter/gliaciereport.asp>).

The La Mare Glacier was selected among the glaciers close to the long-term monitored and rapidly vanishing

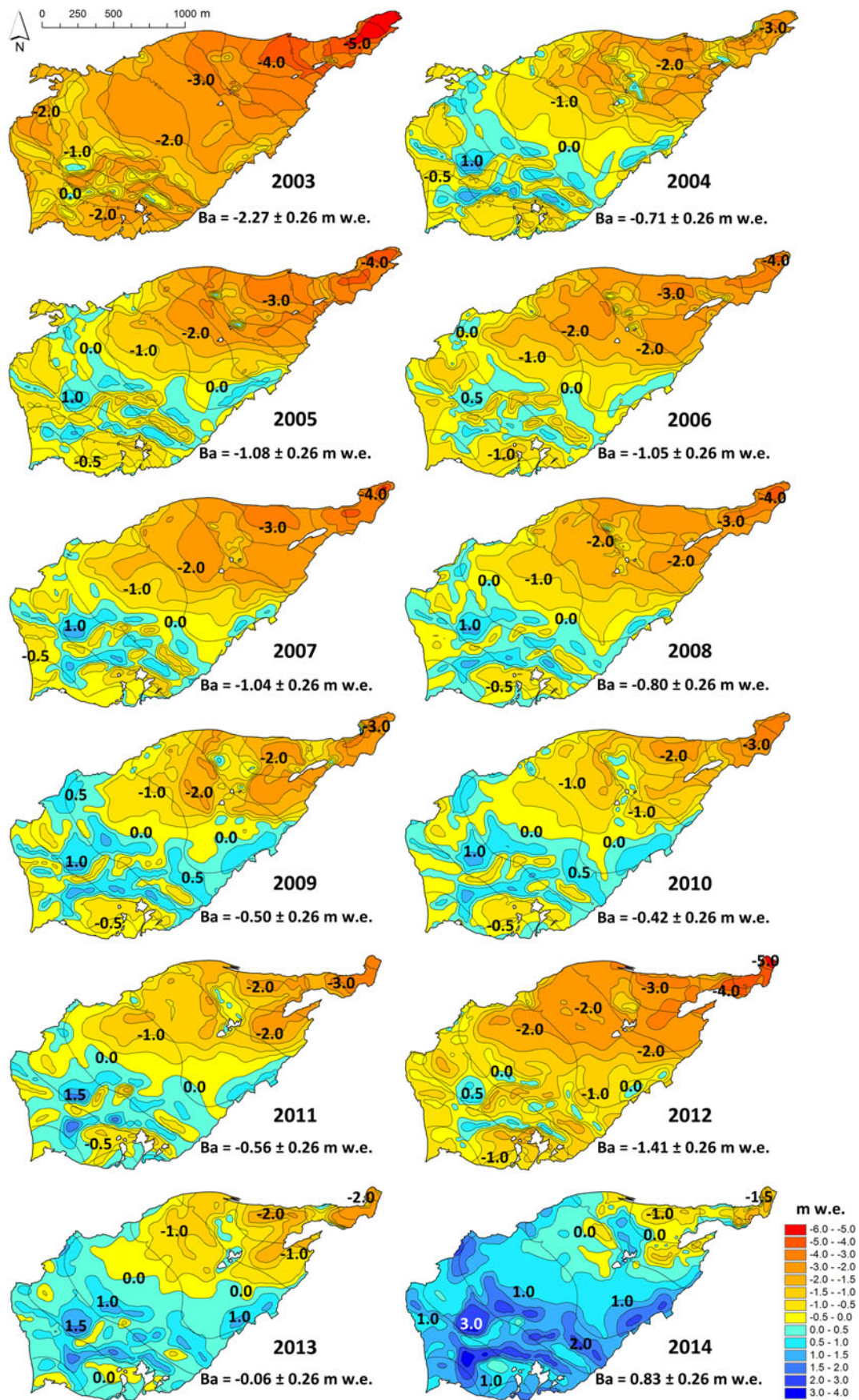


Fig. 6. Spatial distribution of the annual mass balance in the southern branch of La Mare Glacier in the period from 2003 to 2014.

Careser Glacier (Carturan and others, 2013a), because it displayed a persistent accumulation area and because it was among the largest, highest-reaching and at the same time accessible glaciers in the Ortles-Cevedale Group. However, it

represents a glacier type that is challenging for mass-balance monitoring, due to the presence of inaccessible areas, size, remoteness, complex surface morphology and large lateral gradients of mass balance. These characteristics

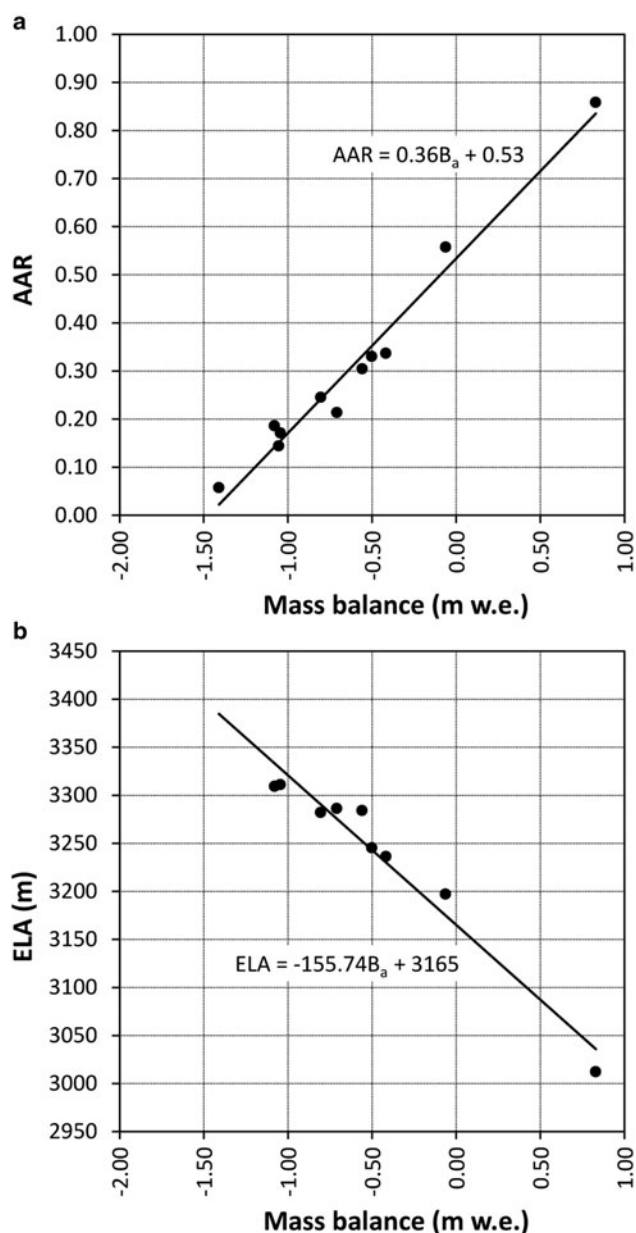


Fig. 7. AAR and ELA vs. annual mass balance in the period from 2003 to 2014. Years with AAR = 0 and ELA above the upper limit of the glacier have been excluded.

may pose serious issues for the achievement and continuation of high-quality measurement series, in particular under the possibility of reduced funding and/or change of investigators.

The efforts made in the first 12 a of observations enabled a good knowledge of the glacier and the spatial pattern of mass-balance distribution to be obtained, and offered the opportunity to implement and test two methods proposed in the literature for the extrapolation of point measurements over unsampled areas. These methods allow for a reduction in the subjectivity of mass-balance calculations and, remarkably, they are based on field observations, totally independent of meteorological measurements. This point is important when mass-balance measurements are used for monitoring strategies of the Earth climate system.

The first method is based on the use of mass-balance gradients over unmeasured areas (Haefeli, 1962; Jansson, 1999). In particular, on La Mare Glacier the cumulative mass

balance vs. elevation was calculated for each date of ablation stake readings/snow cover mapping, and applied for calculating the cumulative mass balance along the mapped transient snowline over inaccessible areas. This method helps to draw mass-balance isolines, thanks to the additional points of cumulative mass balance placed along the transient snowline, which can be used as supplementary 'virtual' ablation stakes. The performance of this method was evaluated using ablation stake readings carried out when they were along the transient snowline. Twenty-two useable stake readings were identified over the 12 a period, providing a mean estimation error of +0.013 m w.e. in the cumulative mass balance, and a standard deviation of 0.243 m w.e. Additional topographic attributes could be used in multiple linear regressions for improving the method. Carturan and others (2009b), for example, suggested including the clear-sky radiation to better account for the spatial variability of ablation. However, a higher range of clear-sky radiation values would be needed, at the mass-balance points, to obtain statistically significant multiple regression parameters. This is not feasible in the southern part of La Mare Glacier due to its uniform exposure.

Based on the experience on La Mare Glacier, it looks advisable (1) to explore as much elevation range as possible during ablation measurements, to reduce the need for extrapolations to higher altitudes, and (2) to acquire sufficient information for mapping the snow cover in the immediate proximity of the dates of ablation measurements. Clearly, the method is only applicable to the ablation area. In the accumulation area it was assumed that the annual mass-balance pattern does not change from year to year. This assumption is based on the observation of the dominant role of topography in controlling the spatial distribution of mass balance, as already acknowledged for example by Erickson and others (2005), Helfricht and others (2014) and Revuelto and others (2014), and is supported by the high similarity of the snow cover pattern in the observation period (Fig. 6). Years with extremely low AAR (2003 and 2012) provided evidence in support of this hypothesis, and were useful for mapping B_a in areas with high net accumulation. Possible deviations from this assumption likely had small impacts in glacier-wide mass-balance calculations, due to the small extent of the accumulation area, but further investigations are required to validate this assumption.

Considering the different mean exposure of the two parts of La Mare Glacier (Fig. 1), the elevational mass-balance gradient measured in the southern part of the glacier was not directly transferable in the northern part. As suggested by Kuhn and others (2009), a vertical shift was applied based on the difference in the median elevation of the two parts (D). However, mass-balance estimates obtained by the geodetic method suggest that replacing D with the mean difference in the transient snowline altitude (D_s) is preferable. In the case of La Mare Glacier, the difference D between the median elevations may not be an adequate metric of the vertical shift of $b(h)$ induced by the different climatic and topographic conditions in the two parts of the glacier. Because the northern part, which is steeper (23.3° on average) is adjusting its geometry faster than the southern part, which is less steep (17.5° on average), D increased from 160 m in 2003 to 196 m in 2013. Therefore, the current value of D expresses the combined effect of (1) the differences in micro-climatic and topographic conditions and (2) the different reaction of the two parts of the glacier, which likely have different response times (Haerberli and Hoelzle, 1995) and type of response, as

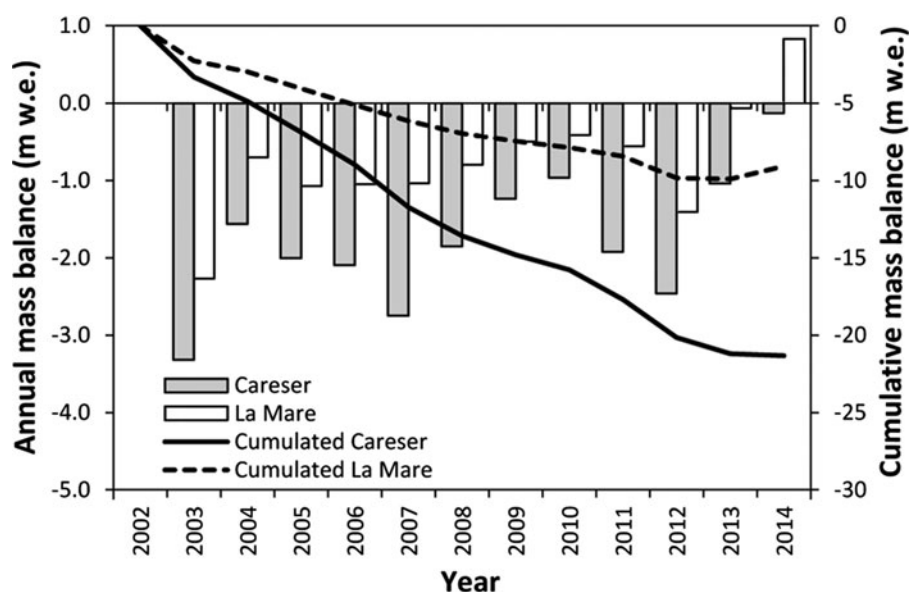


Fig. 8. Comparison of the annual mass balance and cumulative mass balance series of the Careser and La Mare glaciers in the period from 2003 to 2014.

demonstrated by the different behaviour of M_{ref} (decreased by 2 m) and M_u (increased by 34 m) from 2003 to 2013. The average difference in the transient snowline altitude between the two parts ($D_s = 72$ m, as mapped on 13 different dates) likely better represents the actual vertical shift of $b(h)$, and in addition it is intrinsically more stable over time.

The availability and comparison of three different methods for mass-balance determination, which are in good agreement, increases the confidence in estimates over the observation period. However the uncertainty of each method and the fact that each of them measures different components of the mass balance, have to be considered in comparisons. The discrepancy between the geodetic and the glaciological method is only 15 mm w.e. a^{-1} , which is much lower than the lowest detectable bias working with a 90% confidence level (i.e. 265 mm w.e. a^{-1} , quantified following Zemp and others, 2013). Differences in the survey dates and in the reference area are negligible. Similarly, internal and basal balances could not be quantified and have been assumed of minor importance in this temperate glacier (March and Trabant, 1997; Cogley and others, 2011; Zemp and others, 2013). Some authors reported significant local magnitude for internal accumulation (ranging from 120 to 650 mm w.e. a^{-1} ; Trabant and Mayo, 1985; Reijmer and Hock, 2008) or basal ablation (e.g. Haberkorn, 2011, at the tongue of Hintereisferner, Austria), but considering the small extent of the accumulation area and of the ablation tongue, these processes have only local significance on La Mare glacier and likely marginal impacts in glacier-wide calculations.

Similar considerations can be valid for the northern part of the glacier, where mass-balance extrapolations from the southern part likely introduce additional uncertainties in the glaciological method (Kuhn and others, 2009). Given the small uncertainty of the geodetic method (38 mm w.e. a^{-1}), it can be reasonably assessed that the 105 mm w.e. a^{-1} less negative mean geodetic mass balance of the northern part actually describes conditions of smaller imbalance, compared with the southern part. This behaviour is better reflected by the use of D_s in glaciological extrapolations, even if estimates

using either D or D_s are not statistically different from the geodetic estimate (Table 1).

The hydrological method provided mass-balance estimates in good agreement with the glaciological method, while comparisons cannot be done with the geodetic method given the different periods of observations. However, significant uncertainty affects the calculation of the hydrological mass balance. Additional investigations on precipitation gradients, evaporation rates and runoff measurement errors could help in reducing the uncertainty intrinsic in this method (Østrem and Brugman, 1991; Kaser and others, 2003).

The results of the first 12 a of mass-balance monitoring show nearly unchanged mass loss rates compared with the calculations between 1983 and 2006 by Carturan and others (2013b). Calculating the average geodetic mass-balance rates for 112 glaciers in the Ortles-Cevedale Group, the same authors highlighted a much higher spatial representativeness of La Mare Glacier, compared with the neighbouring Careser Glacier, whose mass-balance series dates back to 1967. Unchanged mass loss rates suggest sustained climatic forcing and lack of adjustment of the glacier, whose mass balance would otherwise tend to zero. Given the current extent of the accumulation area, the committed area change under stationary climatic conditions is close to -50% . The two parts will separate in the next few years. After that, the southern part will lose the ablation area below 3100 m a.s.l., which is already becoming stagnant (Fig. 3); steep and convex areas at high altitude will also deglacierate, due to low winter accumulation and lack of summer snowfall. The northern and steeper part of the glacier will likely continue its fast geometric adjustment, and fragmentation is likely to start soon owing to the low ice thickness.

These hypothesised morphological changes would drastically reduce the size of La Mare Glacier. As local topo-climatic effects are of increasing importance for the smaller ice bodies (e.g. DeBeer and Sharp, 2009), new assessments might be required in the future for checking the spatial

representativeness of the glacier at the regional scale. Further climatic warming would ultimately cause the extinction of La Mare Glacier and of most glaciers in the Ortles-Cevedale and in the Eastern European Alps. In that case only small ice bodies would survive, highly dependent on local-scale controls such as topographic shading, debris cover and avalanches, and mostly decoupled from regional-scale temperature fluctuations (e.g. Kuhn, 1995; DeBeer and Sharp, 2009; Carturan and others, 2013c). This circumstance would represent a serious issue for monitoring strategies of the climate system based on glacier mass balance in this geographic area.

6. CONCLUSIONS

This paper presents the methods and results of the first 12 a of mass-balance monitoring on La Mare Glacier, which was selected for a new series of measurements in 2003, to replace the rapidly vanishing long-term monitored Careser Glacier. The mass balance was negative from 2003 to 2012, close to zero in 2013 and positive in 2014, averaging -0.756 ± 0.260 m w.e. a^{-1} . The glacier still preserves an accumulation area (average AAR = 0.28), which however is too small for the current glacier geometry. The present mass loss rate is comparable with previous estimates for the 1983 to 2006 period, indicating sustained climatic forcing and imbalanced conditions. Additional area loss of ~50% is required to re-establish equilibrium with unchanged climatic conditions.

The comparison of results from the glaciological, geodetic and hydrological methods revealed good agreement, with discrepancies that are not statistically significant. In particular, a good correspondence was found between decadal mass-balance rates from the glaciological and geodetic methods, revealing that calibration of glaciological results is not required in the investigated time span.

Two techniques for extrapolating point measurements over unsampled and inaccessible areas were tested. The first, which consists in the repeat mapping of the transient snowline during the ablation season and in the calculation of the cumulative mass-balance altitudinal gradient for points along the snowline, greatly facilitated the digitisation of mass-balance isolines and provided local estimates with a random error of 240 mm w.e. a^{-1} . However, the method only works in the ablation area, and in the accumulation area it was assumed that the mass-balance pattern is stable from year to year.

The second, proposed by Kuhn and others (2009), consists of the transfer of the vertical mass-balance profile from the measured southern branch of the glacier, to the unmeasured northern branch. The results suggest that the average difference between the transient snowline altitudes could be a valid alternative to the difference in the median elevation of the two parts of the glacier, in particular when they have different slope and different response time and during periods with imbalanced conditions and rapid morphological changes. Further tests on other glaciers are required for assessing if this could be an effective improvement of the method.

Future field work and analyses should be carried out (1) for checking assumptions of negligible internal and basal mass exchanges and stable mass-balance pattern in the accumulation area and (2) for reducing measurement and calculation errors, in particular for the glaciological and hydrological methods. In addition, future geodetic mass-balance measurements should be carried out not only for validating the glaciological results,

but also for checking the spatial representativeness of the glacier at the regional scale, after its expected geometric adjustment.

ACKNOWLEDGEMENTS

This study was funded by the Italian MIUR Project (PRIN 2010-11): 'Response of morphoclimatic system dynamics to global changes and related geomorphological hazards' (local and national coordinators G. Dalla Fontana and C. Baroni). Special thanks go to Giancarlo Dalla Fontana and Federico Cazorzi. The author is grateful to Fabrizio De Blasi for his contribution in the collection and processing of the field and remotely-sensed data. Many thanks also to the numerous friends, colleagues, alpine guides and students who contributed to the collection of the field data. The Autonomous Province of Trento is acknowledged for providing the meteorological and topographic data. Suggestions by Jo Jacka, David Rippin and two anonymous reviewers have helped in a significant way to improve the manuscript.

REFERENCES

- Braun LN and 7 others (1994) Measurement and simulation of high alpine water balance components in the Linth-Limmern head watershed (northeastern Switzerland). *Z. Gletsch.kd. Glazialgeol.*, **30**, 161–185
- Carturan L (2010) *Climate change effects on the cryosphere and hydrology of a high-altitude watershed*. (PhD diss., TeSAF, University of Padova, Italy)
- Carturan L, Dalla Fontana G and Cazorzi F (2009a) The mass balance of La Mare Glacier (Ortles-Cevedale, Italian Alps) from 2003 to 2008. In *Epitome, Proceedings of Geoitalia 2009 Congress*, vol. **3**, 298
- Carturan L, Cazorzi F and Dalla Fontana G (2009b) Enhanced estimation of glacier mass balance in unsampled areas by means of topographic data. *Ann. Glaciol.*, **50**, 37–46 (doi: 10.3189/172756409787769519)
- Carturan L, Dalla Fontana G and Borga M (2012) Estimation of winter precipitation in a high-altitude catchment of the Eastern Italian Alps: validation by means of glacier mass balance observations. *Geogr. Fis. Dinam. Quat.*, **35**, 37–48 (doi: 10.4461/GFDQ.2012.35.4)
- Carturan L and 11 others (2013a) Decay of a long-term monitored glacier: Careser Glacier (Ortles-Cevedale, European Alps). *Cryosphere*, **7**, 1819–1838 (doi: 10.5194/tc-7-1819-2013)
- Carturan L and 10 others (2013b) Area and volume loss of the glaciers in the Ortles-Cevedale group (Eastern Italian Alps): controls and imbalance of the remaining glaciers. *Cryosphere*, **7**, 1339–1359 (doi: 10.5194/tc-7-1339-2013)
- Carturan L and 11 others (2013c) Current behaviour and dynamics of the lowermost Italian glacier (Montasio Occidentale, Julian Alps). *Geogr. Ann. Ser. A-phys. Geogr.*, **95**, 79–96 (doi: 10.1111/geoa.12002)
- Carturan L and 8 others (2014) Reconstructing fluctuations of La Mare Glacier (Eastern Italian Alps) in the Late Holocene: new evidence for a Little Ice Age maximum around 1600 AD. *Geogr. Ann. Ser. A-phys. Geogr.*, **96**, 287–306 (doi: 10.1111/geoa.12048)
- Carturan L and 7 others (2016) Analysis of the mass balance time series of glaciers in the Italian Alps. *Cryosphere*, **10**, 695–712 (doi: 10.5194/tc-10-695-2016)
- Cogley JG and 10 others (2011) *Glossary of glacier mass balance and related terms*. IHP-VII Technical Documents in Hydrology No. 86, IACS Contribution No. 2, UNESCO-IHP, Paris, 114 pp
- DeBeer CM and Sharp MJ (2009) Topographic influences on recent changes of very small glaciers in the Monashee Mountains,

- British Columbia, Canada. *J. Glaciol.*, **55**(192), 691–700 (doi: 10.3189/002214309789470851)
- Erickson TA, Williams MW and Winstral A (2005) Persistence of topographic controls on the spatial distribution of snow in rugged mountain terrain, Colorado, United States. *Water Resour. Res.*, **41**, W04014 (doi: 10.1029/2003WR002973)
- Escher-Vetter H, Braun LN, Siebers M and Weber M (2005) Water balance of the Vernagtferner high alpine basin based on long-term measurements and modelling. In Herrmann A ed. *Proceedings of the International Conference on Hydrology of Mountain Environments, Berchtesgaden, 27.9.-1.10. 2004*, Landschaftsökologie und Umweltforschung, Technische Universität Braunschweig, Heft, vol. **48**, 19–32
- Escher-Vetter H, Kuhn M and Weber M (2009) Four decades of winter mass balance of Vernagtferner and Hintereisferner, Austria: methodology and results. *Ann. Glaciol.*, **50**(50), 87–95 (doi: 10.3189/172756409787769672)
- Frei C and Schär C (1998) A precipitation climatology of the Alps from high-resolution rain-gauge observations. *Int. J. Climatol.*, **18**, 873–900 (doi: 10.1002/(SICI)1097-0088(19980630)18:8<873::AID-JOC255>3.0.CO;2-9)
- Galos SP and 6 others (2015) Recent glacier changes and related contribution potential to river discharge in the vinschgau / Val Venosta, Italian Alps. *Geogr. Fis. Dinam. Quat.*, **38**(2), 143–154 (doi: 10.4461/GFDQ.2015.38.13)
- Haberkorn A (2011) *Assessing the contribution of basal melt processes to the local mass balance at the tongue of Hintereisferner, Ötztal, Austria*. (Master's thesis, Institute of Meteorology and Geophysics, University of Innsbruck). <http://imgi.uibk.ac.at/sites/default/files/migration/thesisAnnaHaberkorn.pdf>.
- Haeberli W and Hoelzle M (1995) Application of inventory data for estimating characteristics of and regional climate-change effects on mountain glaciers: a pilot study with the European Alps. *Ann. Glaciol.*, **21**, 206–212
- Haefeli R (1962) The ablation gradient and the retreat of a glacier tongue. In *Symposium of Obergurgl, IASH Publication*, vol. **58**, 49–59
- Helfricht K, Schöber J, Schneider K, Sailer R and Kuhn M (2014) Interannual persistence of the seasonal snow cover in a glacierized catchment. *J. Glaciol.*, **60**(223), 889–904 (doi: 10.3189/2014jgG13J197)
- Hoinkes H and Lang H (1962) Der Massenhaushalt von Hintereis- und Kesselwandferner (Ötztaler Alpen), 1957/58 und 1958/59. *Archiv für Meteorologie, Geophysik und Bioklimatologie, Serie B*, **12**(2), 284–320
- Huss M, Bauder A and Funk M (2009) Homogenization of long-term mass-balance time series. *Ann. Glaciol.*, **50**(50), 198–206 (doi: 10.3189/172756409787769627)
- Huss M, Dhulst L and Bauder A (2015) New long-term mass balance series for the Swiss Alps. *J. Glaciol.*, **61**(227), 551–562 (doi: 10.3189/2015jgG15j015)
- Jansson P (1999) Effect of uncertainties in measured variables on the calculated mass balance of Storglaciären. *Geogr. Ann. Ser. A-phys. Geogr.*, **81**(4), 633–642
- Kaser G, Fountain AG and Jansson P (2003) *A manual for monitoring the mass balance of mountain glaciers with particular attention to low latitude characteristics*. A Contribution to the UNESCO HKH-Friend Programme, Paris, France, 107 pp
- Kuhn M (1995) The mass balance of very small glaciers. *Z. Gletscherkd. Glazialgeol.*, **31**(1–2), 171–179
- Kuhn M and 5 others (1985) Fluctuations of climate and mass balance: different responses of two adjacent glaciers. *Z. Gletscherkd. Glazialgeol.*, **21**(1), 409–416
- Kuhn M and 5 others (1999) Measurements and models of the mass balance of Hintereisferner. *Geogr. Ann. Ser. A-phys. Geogr.*, **81**(4), 659–670
- Kuhn M, Abermann J, Bacher M and Olefs M (2009) The transfer of mass-balance profiles to unmeasured glaciers. *Ann. Glaciol.*, **50**(50), 185–190 (doi: 10.3189/172756409787769618)
- Lang H (1981) Is evaporation an important component in high alpine hydrology? *Nordic Hydrol.*, **12**, 217–224.
- March RS and Trabant DC (1997) Mass balance, meteorological, ice motion, surface altitude, and runoff data at Gulkana Glacier, Alaska, 1993 balance year. *USGS Water-Resources Investigations Report*, 96–4299, 30 pp
- Moser H, Escher-Vetter H, Oerter H, Reinwarth O and Zunke D (1986) *Abfluss in und von Gletschern*. *GSF-Bericht*, 41, Gesellschaft für Strahlen- und Umweltforschung mbH, München, 1–397
- Østrem G and Brugman M (1991) *Mass balance measurement techniques. A manual for field and office work*. National Hydrology Research Institute (NHRI) Science Report, 4, Saskatoon, Canada, 224 pp
- Reijmer C and Hock R (2008) Internal accumulation on Storglaciären, Sweden, in a multilayer snow model coupled to a distributed energy- and mass-balance model. *J. Glaciol.*, **54**, 61–72 (doi: 10.3189/002214308784409161)
- Revelto J, López-Moreno JI, Azorin-Molina C and Vicente-Serrano SM (2014) Topographic control of snowpack distribution in a small catchment in the central Spanish Pyrenees: intra- and inter-annual persistence. *Cryosphere*, **8**, 1989–2006 (doi: 10.5194/tc-8-1989-2014)
- Rolstad C, Haug T and Denby B (2009) Spatially integrated geodetic glacier mass balance and its uncertainty based on geostatistical analysis: application to the western Svartisen ice cap, Norway. *J. Glaciol.*, **55**(192), 666–680 (doi: 10.3189/002214309789470950)
- Strasser U, Bernhardt M, Weber M, Liston GE and Mauser W (2008) Is snow sublimation important in the alpine water balance? *Cryosphere*, **2**(1), 53–66 (doi: 10.5194/tc-2-53-2008)
- Trabant DC and Mayo LR (1985) Estimation and effects of internal accumulation on five glaciers in Alaska. *Ann. Glaciol.*, **6**, 113–117
- WGMS (1989) In Haeberli W, Bösch H, Scherler K, Østrem G and Wallén CC eds. *World glacier inventory – status 1988*. IAHS (ICSU)/UNEP/UNESCO, World Glacier Monitoring Service, Zurich, Switzerland, 458 pp
- WGMS (2008) In Zemp M and 5 others eds. *Global glacier changes: facts and figures*. UNEP, World Glacier Monitoring Service, Zurich, Switzerland
- WGMS (2015) In Zemp M and 7 others eds. *Global glacier change bulletin no. 1 (2012–2013)*. ICSU(WDS)/IUGG(IACS)/UNEP/UNESCO/WMO, World Glacier Monitoring Service, Zurich, Switzerland, 230 pp, publication based on database version: doi:10.5904/wgms-fog-2015-11
- Zemp M, Frauenfelder R, Haeberli W and Hoelzle M (2005) Worldwide glacier mass balance measurements: general trends and first results of the extraordinary year 2003 in Central Europe. In *Data of Glaciological Studies [Materialy glyatsiologicheskikh issledovaniy]*, Moscow, Russia, vol. **99**, 3–12
- Zemp M, Paul F, Hoelzle M and Haeberli W (2008) Glacier fluctuations in the European Alps 1850–2000: an overview and spatio-temporal analysis of available data. In Orlove B, Wiegandt E and Luckman BH eds. *The darkening peaks: glacial retreat in scientific and social context*. University of California Press, Berkeley, 152–167
- Zemp M, Hoelzle M and Haeberli W (2009) Six decades of glacier mass-balance observations: a review of the worldwide monitoring network. *Ann. Glaciol.*, **50**(50), 101–111 (doi: 10.3189/172756409787769591)
- Zemp M and 16 others (2013) Reanalysing glacier mass balance measurement series. *Cryosphere*, **7**, 1227–1245 (doi: 10.5194/tc-7-1227-2013)