



Hybridization in contact zone between temperate European pine species

Witold Wachowiak^{1,2} · Weronika B. Żukowska¹ · Błażej Wójcikiewicz¹ · Stephen Cavers³ · Monika Litkowiec¹

Received: 27 August 2015 / Revised: 13 April 2016 / Accepted: 15 April 2016 / Published online: 4 May 2016
© The Author(s) 2016. This article is published with open access at Springerlink.com

Abstract Hybridization studies are important to advance our understanding of the interspecific gene flow and its evolutionary consequences in closely related species. Hybridization and admixture patterns were assessed in a contact zone and reference populations of European pine species using sequence data from 26 nuclear genes and a species-diagnostic cpDNA marker. Reference populations formed three distinct genetic clusters comprising *Pinus sylvestris*, *Pinus mugo*/*Pinus uliginosa*, and *Pinus uncinata*. Evidence of population structure was found only in *P. uliginosa*. Based on phenotypic characteristics and molecular data, we identified five groups of individuals in the contact zone in Poland, comprising forms of the parental species and intermediates that were most probably the result of interspecific crosses. A combination of nuclear gene sequence data and a diagnostic organelle marker were used to show that hybridization is frequent in the contact zone and results in hybrid trees with distinct phenotypic identity. The influence of selection in maintaining hybrid phenotypes in environments unsuited to parental species was inferred from nucleotide polymorphism data. A lack of

admixture in reference populations suggests that hybridization has not occurred during post-glacial migration and so the contact zone represents a distinct, active example of ongoing evolution. Pine populations in this zone will be a valuable system for studying the genetic basis of hybrid advantage in environmental conditions untypical of pure parental species.

Keywords Hybridization · Molecular markers · Natural selection · Local adaptation · Speciation

Introduction

Natural hybridization creates recombinants from interspecific mating between divergent parental taxa when they come into geographic contact (Arnold and Martin 2010; Lexer and Widmer 2008). Hybridization has various evolutionary consequences for the taxa involved (Baack and Rieseberg 2007). For instance, it may cause swamping of the species with the smaller effective population size by gene flow from the more abundant species, integration of genetic material from one species into another through repeated back-crossing (introgression), homoploid hybrid speciation—in which the new hybrid lineages become reproductively isolated from parental populations, or transfer of adaptive traits across species boundaries (Baack and Rieseberg 2007). Well-documented examples show that hybrid genotypes may have equivalent or higher fitness relative to parental species due to environmental selection (Andrew and Rieseberg 2013; Rieseberg et al. 2007; Whitney et al. 2010). Even where hybrid fertility or viability is reduced in early generations, gene flow can nevertheless allow propagation of hybrids and adaptive divergence (Gross and Rieseberg 2005). Contact among species during major population movements or range shifts, such as those associated with the post-glacial recolonization of

Communicated by F. Gugerli

Electronic supplementary material The online version of this article (doi:10.1007/s11295-016-1007-x) contains supplementary material, which is available to authorized users.

✉ Witold Wachowiak
witoldw@man.poznan.pl

¹ Institute of Dendrology, Polish Academy of Sciences, Parkowa 5, 62-035 Kórnik, Poland

² Institute of Environmental Biology, Faculty of Biology, Adam Mickiewicz University, Umultowska 89, 61-614 Poznań, Poland

³ Centre for Ecology and Hydrology Edinburgh, Bush Estate, Pentlands, Midlothian EH26 0QB, UK

Europe, may therefore have played an important role in the evolution of closely related contemporary species.

Hybridization was postulated to have occurred between the closely related Scots pine (*Pinus sylvestris* L.) and taxa from the *Pinus mugo* complex including dwarf mountain pine (*Pinus mugo* Turra), peat bog pine (*Pinus uliginosa* Neumann), and mountain pine (*Pinus uncinata* Ramond ex DC.) (Jasińska et al. 2010; Wachowiak and Prus-Głowacki 2008). These taxa differ from each other in phenotype, geographical distribution, and ecology, in particular for traits related to dehydrative stress and temperature (Critchfield and Little 1966). *Pinus sylvestris* is the most widespread and economically important forest tree species in Europe and Asia and shows adaptive variation in response to environmental gradients, e.g., in timing of bud set and cold hardiness (González-Martínez et al. 2006; Hurme et al. 2000). *Pinus mugo* is an endemic species typical of the mountainous regions of Europe (Critchfield and Little 1966). *Pinus uliginosa* was described in the Central Sudetes where it grows mainly on peat bogs, and *Pinus uncinata* is adapted to mountain environments and is most abundant in the Alps and Pyrenees. The latter, together with *P. mugo* and *P. uliginosa*, comprise the *P. mugo* complex (Businsky and Kirschner 2006; Christensen 1987b). The present distribution of these species and *P. sylvestris* is mostly allopatric and results from post-glacial migration and range shifts following changes in environmental conditions and competition with other forest tree species. However, recolonization created zones of contact between species as their ranges overlapped in some parts of their distributions. At present, contact zones exist in several places in the mountains of southern and central Europe (Christensen 1987a). As the species were interfertile in controlled crosses (Wachowiak et al. 2005a), natural hybridization has been suggested as a main driver of phenotypic divergence of several taxa described within the *P. mugo* complex (Christensen 1987a). By comparing patterns of genetic variation and admixture in contact zones and in reference populations, the role of introgressive hybridization and ecological selection on adaptive divergence can be assessed. Such studies should also allow the investigation of the genetic consequences of hybridization and the potential use of hybrid zones for admixture mapping of adaptively important traits.

Here, we tested for evidence of interspecific admixture and selection in a contact zone between Scots pine and the taxa from the *P. mugo* complex. Using nucleotide polymorphism data from nuclear and chloroplast genomes, we compared genetic variation at intra- and interspecific level in the contact zone and in reference populations of the species across Europe. We quantified admixture outside the contact zone to test whether historic interspecific gene flow has played a role in species divergence during post-glacial recolonization and to evaluate the role of introgressive hybridization and selection on patterns of genetic divergence and evolution in the focal species.

Materials and methods

Experimental design and sample grouping

Samples from a contact zone and 30 reference populations of *P. sylvestris* and the taxa from the *P. mugo* complex from their European distribution were used in the study (Fig. 1, Table 1). Previous biometric studies suggested the existence of relict *P. uncinata* populations in the Silesian Lowlands. Those locations are geographically distant from the contemporary range of the species (Marcysiak and Boratyński 2007) but close to the contact zone. Therefore, we included *P. uncinata* in our analysis.

The contact zone comprised sympatric populations of the pine species at the Zieleniec reserve which is the largest peat bog complex in the Sudety Mountains, southwest Poland. For taxonomic classification of trees in the contact zone, we used several phenotypic traits, i.e., growth form, bark color of the upper part of stem and main branches, color and shape of needles, and setting angle of conelet from the previous year (when available) (Christensen 1987b). Based on these traits, we identified pure bushy *P. mugo* individuals (PMZ), monocormic (single-stemmed) *P. sylvestris* individuals (PSZ), mono- and oligocormic (one-three stemmed) *P. uliginosa* individuals (PUZ), and a group of oligo- and polycormic (multi-stemmed) *P. uliginosa*-like pines of a height of over 2 m and untypical morphology that could not be classified as either of parental species (HBZ). Needles from 40 to 60 trees representing each phenotypic group were sampled. The samples were collected over about 50 ha. Trees of different phenotypes were intermixed across the area and the distance between sampled trees was from 5 to 100 m.

The sampled trees were screened with a diagnostic chloroplast DNA marker (cpDNA) from the *trnF-trnL* region (Wachowiak et al. 2000). This PCR-RFLP marker (using *DraI* as a restriction enzyme) is paternally inherited and dispersed through pollen and seeds (Wachowiak et al. 2006a). It was previously developed based on a single-nucleotide polymorphism that leads to an undigested PCR product for *P. sylvestris* (S marker) and a digested PCR product for *P. mugo* (M marker) giving two bands after electrophoresis on agarose gel. Analysis of many populations from across the distribution range of the pine species in Europe confirmed that this marker discriminates *P. sylvestris* from taxa of the *P. mugo* complex (Wachowiak et al. 2000). PCR-RFLP analysis of the samples from Zieleniec reserve indicated the presence of the M marker in all *P. mugo*, *P. uliginosa*, and the group of taxonomically unclassified polycormic (multi-stemmed) *P. uliginosa*-like pines of untypical morphology (HBZ). However, the M marker was also found in some individuals that had been initially classified as *P. sylvestris*. Therefore, we distinguished another group of samples at Zieleniec reserve, namely monocormic *P. sylvestris*-like individuals carrying cpDNA diagnostic for the *P. mugo* complex (HPSZ) (Table 1).

A subset of 16 to 20 individuals from each group was selected for molecular analyses at 26 nuclear gene loci (Supplementary Table S1). We compared levels of nucleotide variation in the contact zone versus reference populations from allopatric zones of the species. The reference populations were treated either separately or were grouped by geographical location to compare a similar number of samples relative to the putative hybrid zone. *Pinus sylvestris* reference populations were grouped into Northern Europe (Finland and Sweden), Central Europe (Poland and Austria), Southern Europe (Spain), and Northwest Europe (Scotland; Table 1). *Pinus mugo* reference populations were grouped into Central Europe (Sudetes and Alps), Carpathians (Eastern and Southern), and Balkans (Pirin and Durmitor Mts.), and Italy (Carnic Alps and Abruzzi). Seeds from at least ten trees separated at a distance of a minimum 50 m were sampled from each reference population providing a set of 384 trees (Table 2). Using the QIAGEN DNeasy Plant Mini Kit, DNA was extracted from either haploid megagametophyte of seeds (samples from reference populations) or from needles (samples from the contact zone).

PCR amplification and sequencing

Twenty-six nuclear gene loci related to regulation of gene expression, metabolism, signal transduction, and transport were analyzed (Supplementary Table S1). PCR primers are given in Supplementary Table S1. PCRs were performed with Thermo MBS thermal cyclers and carried out in a total volume of 15 μ l containing 15 ng of template DNA, 10 μ M of each dNTP, 0.2 μ M each of forward and reverse primers, 0.15 U *Taq* DNA polymerase, 1 \times BSA, 1.5 μ M of $MgCl_2$, and 1 \times PCR buffer (BioLabs). Standard amplification procedures were used with initial denaturation at 94 $^{\circ}C$ for 3 min followed by 35 cycles with 30 s denaturation at 94 $^{\circ}C$, 30 s annealing at 60 $^{\circ}C$ and 1 min 30 s extension at 72 $^{\circ}C$, and a final 5 min extension at 72 $^{\circ}C$. PCR fragments were purified using Exonuclease I-Shrimp Alkaline Phosphatase enzymatic treatment. About 20 ng of PCR products were used as templates in 10 μ l sequencing reactions with the BigDye Terminator v3.1. DNA Sequencing Kit (Applied Biosystems) performed by Genomed S.A. (Warsaw, Poland) on a 3130xl Genetic Analyzer (Applied Biosystems). CodonCode Aligner software ver. 3.7.1 (Codon Code Corporation, Dedham, MA,

Fig 1 Geographical location of the contact zone of pine species from Zieleniec reserve and reference allopatric populations of *Pinus sylvestris* and the taxa from the *P. mugo* complex. Distribution range of *P. sylvestris* provided by Euforgen network is marked in dark gray

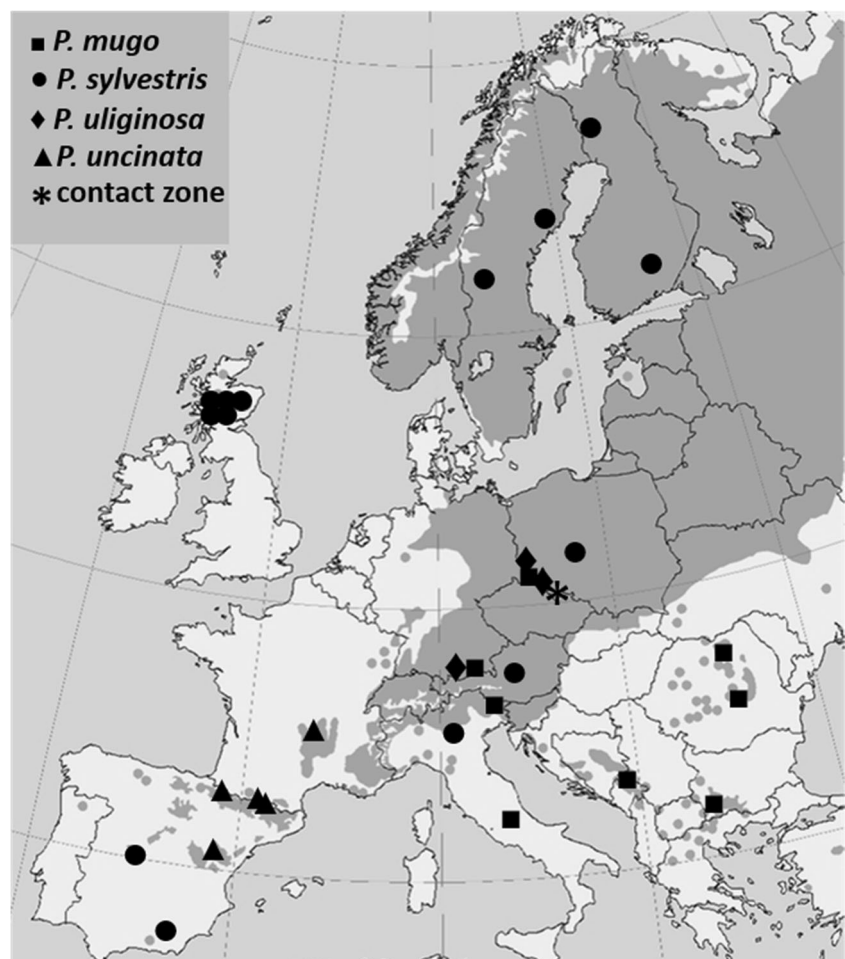


Table 1 Location of populations from Zielieniec reserve and the four reference pine species

Acronym	Location	Long. [°E]	Lat. [°N]	Alt. [m]	Acronym	Location	Long. [°E]	Lat. [°N]	Alt. [m]
Contact zone									
1. PMZ— <i>P. mugo</i>	Zielieniec reserve	16.425	50.341	760	18. PS34	Scotland_Black Wood of Rannoch	-4.320	56.670	275
2. HPSZ— <i>P. sylvestris</i> -like	Zielieniec reserve	16.425	50.341	760	19. PS36	Austria_Permitz	16.000	47.914	500
3. PSZ— <i>P. sylvestris</i>	Zielieniec reserve	16.425	50.341	760	20. PS37	Spain_Trevenque	3.547	37.096	1170
4. PUZ— <i>P. uliginosa</i>	Zielieniec reserve	16.425	50.341	760	21. PS38	Spain_Valsain	-4.035	40.865	1350
5. HBZ— <i>P. uliginosa</i> -like	Zielieniec reserve	16.425	50.341	760	22. PS39	Finland_Punkaharju	29.358	61.730	80
<i>Pinus mugo</i>					23. PS40	Finland_Kolari	24.050	67.183	190
6. PM1	Poland_Śląskie Kamienie	15.600	50.783	1420	24. PS43	Poland_Jarocin	17.477	51.972	120
7. PM4	Romania_Carpathians E	24.800	47.567	1720	25. PS44	Sweden_Krp. Tjällbergsheden	20.738	64.62	110
8. PM5	Romania_Carpathians S	25.452	45.432	2070	26. PS45	Sweden_Väster Mjöingenn	13.581	62.750	640
9. PM7	Bulgaria_Pirin	23.423	41.769	2000	27. PS46	Italy, Cella di Palmia	10.165	44.633	180
10. PM8	Montenegro_Durmitor Mts.	19.091	43.159	2100	<i>Pinus uliginosa</i>				
11. PM12	Austria_Karwendel Mts.	11.296	47.378	1400	28. PUG1	Poland_Wegliniec reserve	15.227	51.294	190
12. PM14	Italy_Carnic Alps	13.147	46.544	1300	29. PUG2	Germany_Mittelwald	11.274	47.480	860
13. PM16	Italy_Abruzzi	13.975	41.772	2200	30. PUG3	Poland_Batorów reserve	16.384	50.459	710
<i>Pinus sylvestris</i>					<i>Pinus uncinata</i>				
14. PS30	Scotland_Shieldaig	-5.641	57.512	81	31. PUN17	Andorra_Val de Ransol	1.594	42.625	2025
15. PS31	Scotland_Glen Tanar	-2.856	57.056	160	32. PUN18	Andorra_San Miguel de Engolasters	1.570	42.524	2000
16. PS32	Scotland_Rothenmureus	-3.770	57.150	318	33. PUN23	Spain_Castiello de Jaca	-0.537	42.636	1720
17. PS33	Scotland_Glen Affric	-4.920	57.270	256	34. PUN24	Spain_Sierra de Guadar	-0.606	40.391	2000
					35. PUN28	France_Col de la Croix de Morand	3.054	45.684	1400

Groups of populations defined at the Zielieniec reserve include *Pinus mugo* samples (PMZ), hybrid *P. sylvestris*-like pines with cpDNA of the *P. mugo* complex (HPSZ), *P. sylvestris* samples (PSZ), *Pinus uliginosa* samples (PUZ), and a group of *P. uliginosa*-like polycormic hybrids with cpDNA of the *P. mugo* complex (HBZ). Pure species reference samples include pines of *P. mugo* from Central Europe (PM1, PM12), the Carpathians (PM4, PM5), Balkans (PM7, PM8), and Italy (PM14, PM16); *P. sylvestris* from Northern Europe (PS39–40, PS44–45), Central Europe (PS36, PS43), Southern Europe (PS37–38), and Northwest Europe (PS30–34); *P. uliginosa* from Poland and Germany and *P. uncinata* from the Iberian Peninsula and Massif Central

Table 2 Nucleotide and haplotype diversity of the groups of pines defined at Zieleniec reserve (Table 1) and reference populations of pure taxa of *Pinus mugo*, *P. sylvestris*, *P. uliginosa*, and *P. uncinata* (average values across 26 nuclear genes are reported)

Species/group of samples				Nucleotide polymorphisms			Haplotype diversity		
	<i>N</i>	<i>n</i>	<i>L</i>	SNPs	<i>S</i>	π_{total}	Tajima's <i>D</i>	<i>N_h</i>	<i>H_d</i> (SD)
Contact zone of the species									
PMZ— <i>P. mugo</i>	20	40	404	7.3	2.0	0.0044	−0.148	7.2	0.650 (0.054)
HPSZ— <i>P. sylvestris</i> -like	20	40	404	8.1	1.8	0.0055	0.206	7.7	0.710 (0.047)
PSZ— <i>P. sylvestris</i>	20	40	404	7.2	2.2	0.0039	−0.292	6.7	0.541 (0.062)
PUZ— <i>P. uliginosa</i>	20	40	404	8.2	1.9	0.0049	−0.164	8.1	0.695 (0.053)
HBZ— <i>P. uliginosa</i> -like	16	40	404	7.0	2.1	0.0045	−0.138	6.9	0.658 (0.058)
Reference populations									
PM_CE— <i>P. mugo</i>	30	30	449	6.9	1.8	0.0039	−0.039	5.4	0.609 (0.067)
PS_CE— <i>P. sylvestris</i>	20	20	448	7.1	2.9	0.0042	−0.301	5.3	0.625 (0.080)
PUG_BM— <i>P. uliginosa</i>	14	14	441	6.4	2.6	0.0044	−0.108	4.3	0.636 (0.099)
PUN_FR— <i>P. uncinata</i>	10	10	440	6.4	2.2	0.0053	0.267	4.2	0.704 (0.117)
Reference populations _All									
PM— <i>P. mugo</i>	79	79	450.9	10.7	3.6	0.0039	−0.536	9.0	0.603 (0.042)
PS— <i>P. sylvestris</i>	135	135	450.9	13.7	5.2	0.0042	−0.859	12.3	0.590 (0.031)
PUG— <i>P. uliginosa</i>	24	24	450.9	8.4	2.9	0.0046	−0.254	5.8	0.650 (0.073)
PUN— <i>P. uncinata</i>	50	50	450.9	9.5	2.0	0.0048	0.170	6.8	0.665 (0.049)

Reference populations: CE—Central Europe; BM—populations from Batorów reserve and Mittelwalde; FR—Col de la Croix de Morand (France) (Table 1)

N sample size, *n* number of gene copies analyzed at each locus, *L* length of sequence in base pairs, *S* number of segregating sites, π nucleotide diversity (Nei 1987), Tajima's *D* test (Tajima 1989), *N_h* number of haplotypes, *H_d* haplotype diversity (standard deviation)

USA) was used for editing of the chromatograms, visual inspection of all polymorphic sites detected, and alignments. GenBank reference sequences from *Pinus taeda* were used as an outgroup in neutrality tests (Supplementary Table S1). The haplotype phase (combined multi-locus polymorphism) of samples amplified from needles was determined using PHASE software and reference haplotype sequences of the pure species derived from DNA sequencing of the haploid megagametophyte tissue. Haplotype sequence data are deposited in the NCBI repository (Supplementary Table S1).

Nucleotide variation

We looked at the patterns of nucleotide and haplotype polymorphism among groups of samples from the contact zone, and between the samples from the contact zone and reference pure species populations. Nucleotide diversity was measured as the average number of differences per site (π) between two sequences (Nei 1987). The number of haplotypes (*N_h*) and haplotype diversity (*H_d*) were computed for each gene using DnaSP v.5 (Librado and Rozas 2009). The number and frequency of unique and shared haplotypes in pairwise comparisons between species was calculated with Arlequin v.3.5 (Excoffier and Lischer 2010). Locus-by-locus estimates of net divergence between the groups of samples (Nei 1987)

were determined using SITES 1.1 (Hey and Wakeley 1997). Genetic relationships between reference pure species populations and groups of samples from the contact zone were assessed based on pairwise net average genetic distance at all polymorphic sites detected at 26 loci using Unweighted Pair Group Method with Arithmetic Mean (UPGMA) as implemented in Mega 6.06 (Tamura et al. 2013). Standard errors of the interior branches were calculated using 1000 bootstrap procedure and the Maximum Composite Likelihood model as implemented in Mega.

Population structure and taxonomic relationships

Population structure was studied using Bayesian clustering methods and analysis of molecular variance. In addition, we assessed genetic differentiation between groups of samples from the contact zone and the reference populations of the species. Clustering of individuals and populations and estimates of admixture were explored using BAPS 6.0 (Corander and Tang 2007). Ten independent runs were conducted for each *K* (1–35) to estimate the number of clusters for all samples combined, for the three taxa from the *P. mugo* complex (*P. mugo*, *P. uliginosa*, and *P. uncinata*), *P. sylvestris*, and samples from the contact zone based on all polymorphic sites. The linear linkage model was used, the

number of iterations used to estimate admixture coefficients was set to 100, the number of reference individuals was set to 100, and the number of iterations used to estimate admixture coefficients for the reference individuals was 10. Genetic differentiation in pairwise comparisons between populations was measured as Wright's fixation index (Weir and Cockerham 1984) over all polymorphic sites and tested for significance by 1000 permutations of the samples between populations using Arlequin v.3.5 software (Excoffier and Lischer 2010). To further assess among-population differentiation, we used principal coordinate analysis (PCoA) based on the mean net genetic distance between populations at all polymorphic sites.

Tests for natural selection

We tested for the effects of selection on genes in parental species at both reference and contact zone populations. Tests were based on a comparison of allelic frequency spectra between different groups of populations, and departures from neutral expectations of polymorphisms versus divergence at the interspecific level. Deviations from the standard neutral model of evolution were assessed using the frequency spectrum test and coalescence-based approaches. Tajima's D (Tajima 1989) was computed using the difference between two distinct estimates of the scaled mutation parameter theta for each locus, and statistical significance was evaluated by a comparison to a distribution generated by 1000 coalescent simulations using DnaSP 5.1 (Librado and Rozas 2009). Species may undergo different population histories that can influence the assumptions of standard neutrality tests. Therefore, deviations from neutrality were also tested using two compound neutrality tests that are robust to demographic processes, HEW and DHEW (Zeng et al. 2007). The HEW and DHEW tests are a compound of Fay and Wu's H and Tajima's D /Fay and Wu's H with the Ewens-Watterson neutrality test, respectively (Zeng et al. 2007). Significance levels were determined by 10,000 coalescent simulations based on Watterson's estimator of theta as implemented in the *dh* package (http://zeng-lab.group.shef.ac.uk/wordpress/?page_id=28). The distribution of the test statistic was investigated for each locus in all samples combined from each species. Genetic differentiation in pairwise comparisons within and between species was studied locus by locus, and significance thresholds of the F_{ST} values were set at 99 % and estimated by 1000 permutations of the samples between populations, regional groups, and species using Arlequin v.3.5. The false discovery rate (FDR) adjustment for multiple testing ($\lambda=0.15$, FDR level=0.01) was conducted using QVALUE software based on the distribution of P values for the set of F_{ST} statistics (Storey and Tibshirani 2003).

Results

Nucleotide and haplotype diversity

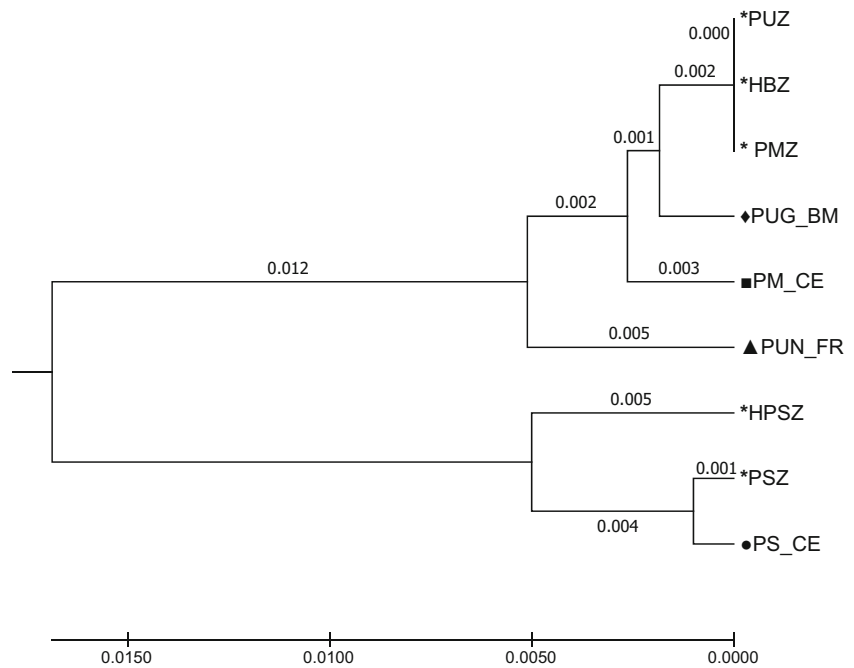
Across the 26 genes, ~10 kbp were aligned providing a set of 579 polymorphic sites (Supplementary material, Appendix file). Average nucleotide diversity ranged between $\pi_{\text{tot}}=0.0036$ and $\pi_{\text{tot}}=0.0055$, and it was slightly higher in samples from the contact zone versus pure species populations (Table 2, Supplementary Table S2). Out of 789 haplotypes detected across 26 loci in all 384 samples analyzed, the majority (57 %) were unique (present only once). Exclusive haplotypes were found in all species and the contact zone groups. The within-population percentage of unique haplotypes ranged from 2.3 % (*P. uliginosa*-like individuals from the contact zone) to 0.2 % (*P. uliginosa* from Batorów reserve) (Supplementary Table S3). The average haplotype diversity was similar for each species ($H_d=0.59$ – 0.66), regional groups of populations ($H_d=0.61$ – 0.70), and groups of samples from the contact zone ($H_d=0.54$ – 0.71) (Table 2). In the contact zone, no net divergence was observed between *P. mugo*, *P. uliginosa*, and polycormic *P. uliginosa*-like pines (Fig. 2, Supplementary Table S4 and S5). Divergence of these three groups was lower from the reference *P. uliginosa* (0.004–0.013) and *P. mugo* populations (0.005–0.013) and slightly higher from *P. uncinata* (0.009–0.023) (Fig. 2). *Pinus sylvestris* from Zieleniec and the reference populations of the species showed low divergence (0.001–0.031), and they were grouped together with *P. sylvestris*-like trees with M cpDNA haplotype (Supplementary Table S4 and S5, Fig. 2). The group of *P. sylvestris*-like trees from Zieleniec showed a similar level of divergence (0.010–0.015) from *P. mugo*, *P. sylvestris*, and *P. uliginosa* from that area (Supplementary Table S4).

Population structure

Of the reference populations, *P. mugo* and two of the *P. uliginosa* populations formed one group in the cluster analysis, while *P. sylvestris* and *P. uncinata* formed separate groups (total $K=3$; Fig. 3a). The *P. uliginosa* population from Węgliniec showed greater similarity to *P. uncinata*. Two *P. sylvestris* individuals from Central and Northern Europe, two *P. mugo*, and several *P. uliginosa* and *P. uncinata* samples were identified as potentially admixed (Fig. 3a).

In the contact zone at Zieleniec, three clusters were identified: one included *P. mugo* (PMZ), *P. uliginosa* (PUZ), and polycormic *P. uliginosa*-like pines (HBZ) from that area; the second contained *P. sylvestris* (PSZ); and the third contained *P. sylvestris*-like samples (HPSZ) that were admixed with *P. mugo*/*P. uliginosa* and *P. uncinata* (Fig. 3a). There was evidence of admixture in a group containing *P. mugo*, *P. uliginosa*, and polycormic *P. uliginosa*-like pines (HBZ)

Fig 2 Unweighted pair group method with arithmetic mean (UPGMA) tree based on average net genetic distances between groups of samples from a contact zone at Zieleniec reserve (asterisks) and reference populations of the species including *Pinus mugo* (filled square), *P. sylvestris* (filled circle), *P. uliginosa* (filled diamond), and *P. uncinata* (filled triangle) (see Table 1 for details). Numbers indicate branch length. Genetic distance and its standard errors for each pairwise comparisons are shown in Supplementary Table S4



that appears to result from hybridization with *P. sylvestris* and *P. uncinata*. Only M and S haplotypes of the *trnF-trnL* cpDNA region were observed across all samples analyzed (Fig. 3b). Clear division between species was found in the PCoA analysis based on the genetic distance between populations (Fig. 4). Groups of *P. mugo* pines from Zieleniec reserve (PMZ and PUZ) and oligo- and polycormic *P. uliginosa*-like pines (HBZ) were placed between *P. mugo* and *P. uliginosa* populations. *Pinus sylvestris*-like hybrids (HPSZ) were placed between *P. mugo*/*P. uliginosa* groups and *P. sylvestris*. *Pinus sylvestris* from the contact zone clustered with allopatric populations of the species (Fig. 4).

Significant differentiation between each pair of taxa was found across all polymorphic sites with *P. mugo* and *P. sylvestris* from Zieleniec reserve as the most diverged ($F_{ST}=0.40$, $P<0.01$) (Table 3). Populations in regional groups of *P. mugo* and *P. sylvestris* showed low but significant differentiation across all polymorphic sites except *P. sylvestris* populations from Central and Northern Europe. No differentiation was found between *P. mugo*, *P. uliginosa*, and the group of polycormic pines from Zieleniec reserve (Table 3). The other groups showed similar levels of differentiation as between populations of allopatric zones of *P. mugo* and *P. sylvestris*.

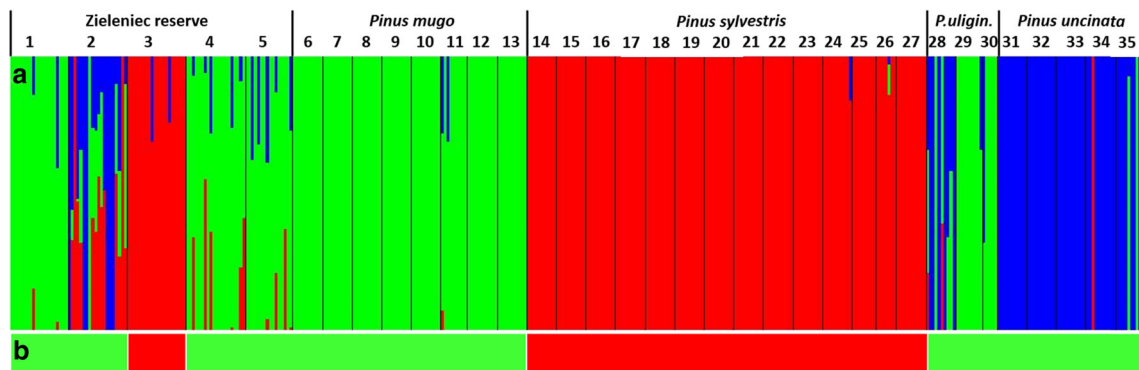
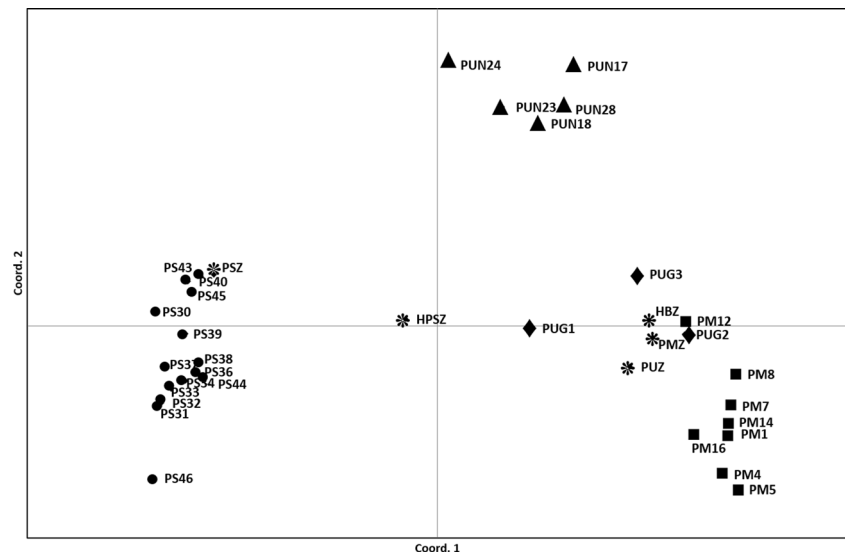


Fig 3 **a** Bar plot from Bayesian assignment (BAPS, Corander and Tang 2007) of the group of pines from Zieleniec reserve and the reference samples indicating three genetic clusters ($K=3$) corresponding to pure *Pinus mugo*, *P. sylvestris*, and *P. uncinata* species. Different colors represent proportional assignment of each sample to individual clusters, the black vertical lines separate the corresponding populations, and numbers above vertical bars refer to populations given in Table 1.

Evidence of admixture ($P<0.01$) was found across the samples from the sympatric population of the species from Zieleniec reserve. At the intraspecific level, heterogeneous population structure was observed between *P. uliginosa* populations. **b** Assignment of samples according to *trnF-trnL* cpDNA marker diagnostic to the *P. mugo* complex (M marker—green) and *P. sylvestris* (S marker—red)

Fig 4 Plot of the first two axes of a principal coordinates analysis (PCoA) based on a genetic distance matrix for groups of samples from Zieleniec reserve and reference populations of the *Pinus mugo*, *P. sylvestris*, *P. uliginosa*, and *P. uncinata* at all polymorphic sites from 26 nuclear genes. Population acronyms as in Table 1



Neutrality tests

An excess of singleton mutations across genes was evident as multilocus Tajima’s *D* was negative in most groups (*D*=−0.859 to −0.039) except *P. sylvestris*-like samples from Zieleniec reserve and reference *P. uncinata* (Table 2). Significant deviations from neutrality at Tajima’s *D* and/or HEW and DHEW compound neutrality tests were found at eight loci in *P. sylvestris* and *P. mugo*, seven at *P. uliginosa* and at one locus in *P. uncinata* (Supplementary Table S6). In the samples from Zieleniec reserve, significant excess of singleton mutations was found at locus Pr4_5 in a group of oligo- and polycormic *P. uliginosa*-like pines, at Pr4_17 in *P. sylvestris*-like individuals, at Pr1_28, Pr2_17, Pr4_17 in *P. sylvestris*, and Pr2_28 in *P. mugo*. An excess of intermediate-frequency variants was found at Pr2_47 in *P. sylvestris* and Pr4_19 in polycormic pines from Zieleniec reserve (Supplementary Table S6).

Locus-specific genetic differentiation and selection

The loci studied showed high divergence between species and very low differentiation between populations within species (Supplementary Table S7). No significant differentiation at any locus was observed between samples from Zieleniec reserve defined as *P. mugo*/*P. uliginosa* and a group of taxonomically unclassified *P. uliginosa*-like polycormic pines. These three groups of samples were highly diverged from *P. sylvestris* and *P. sylvestris*-like samples at most of the loci (Supplementary Table S8). Divergence of populations from Zieleniec from the reference populations (Supplementary Table S9) was higher than divergence between pure species populations (Supplementary Table S7). At the SNP level, several loci were significantly differentiated between *P. sylvestris* and the *P. mugo* complex: 46 SNPs were found in 22 genes from all categories between *P. sylvestris* and *P. mugo*, 40 SNPs in 16 genes between *P. sylvestris* versus *P. uliginosa*, and 24 SNPs in 11 genes between *P. sylvestris* versus *P. uncinata*.

Table 3 Pairwise *F*_{ST} between groups of *Pinus* samples from Zieleniec reserve and the reference populations of pure taxa at all polymorphic sites (significant values at *P* < 0.01 are marked in bold)

	1	2	3	4	5	6	7	8
1. PMZ— <i>P. mugo</i>								
2. HPSZ— <i>P. sylvestris</i> -like	0.117							
3. PSZ— <i>P. sylvestris</i>	0.331	0.094						
4. PUZ— <i>P. uliginosa</i>	−0.001	0.099	0.306					
5. HBZ— <i>P. uliginosa</i> -like	0.001	0.110	0.326	−0.001				
6. PM_CE— <i>P. mugo</i>	0.055	0.191	0.400	0.064	0.056			
7. PS_CE— <i>P. sylvestris</i>	0.325	0.090	0.025	0.290	0.314	0.396		
8. PUG_BM— <i>P. uliginosa</i>	0.045	0.140	0.360	0.045	0.033	0.067	0.354	
9. PUN_FR— <i>P. uncinata</i>	0.088	0.101	0.255	0.096	0.084	0.140	0.256	0.079

Within the *P. mugo* complex, *P. mugo* versus *P. uliginosa* and *P. uncinata* were highly diverged at 5 and 12 SNPs, respectively, and *P. uliginosa* and *P. uncinata* at 6 SNPs (Supplementary Table S10). These polymorphic sites and genes form a valuable set of new markers for tracking hybrid genotypes. The most diverged genes were those involved in regulation of gene expression, signal transduction, transport, and cellular metabolism and appear to be of high importance in speciation and local adaptation (Supplementary Table S1 and S10).

Discussion

Here, we used nucleotide polymorphism data to compare patterns of genetic variation in pine trees from the contact zone with those from allopatric zones of four species from across Europe. We focused on the contact zone between species at a peat bog complex located in the Sudety Mts. in Poland. The aim was to evaluate the role of introgressive hybridization and selection on nucleotide diversity in the analyzed populations. To date, such studies have been limited by the lack of diagnostic biometric and biochemical characters for tracking interspecific gene flow and the identification of individual hybrid trees. For instance, many anatomical traits of needles show overlapping frequency distributions among taxa (Boratyńska et al. 2015). In our study, we used polymorphisms at nuclear genes and a cpDNA marker to identify interspecific admixture. Nuclear markers that experience high rates of intraspecific gene flow are especially relevant for species delimitation (Petit and Excoffier 2009). Our data clearly indicate that the markers applied in our study can accurately discriminate pure parental species. These markers provide a large resource of SNP information for future use in tracking interspecific gene flow and evaluating species composition in other contact zones where individuals with mixed morpho-anatomical characteristics have been described (e.g., in the Alps (Christensen 1987a), Slovakia (Kormutak et al. 2014)).

Hybrids can exhibit intermediate trait values, combine traits from both parents, and/or exhibit extreme trait values as compared to the parental species (Gross and Rieseberg 2005). In our study, high genetic similarity was observed between samples classified as *P. mugo*, *P. uliginosa*, and a group of polycormic *P. uliginosa*-like pines (nucleotide diversity $\pi_{\text{tot}} = \sim 0.0044\text{--}0.0049$, zero net divergence, no significant differentiation in allele frequency spectra). The three groups formed a uniform genetic cluster and showed low divergence (about 1 %) from pure-species populations of the taxa from the *P. mugo* complex. In contrast, they differed clearly from *P. sylvestris* from Zieleniec reserve and from reference populations of the species. Those oligo- and polycormic *P. uliginosa*-like pines that had cpDNA diagnostic to the *P. mugo* complex should be considered as hybrids between *P. mugo* and *P. uliginosa* with no evidence of a substantial

contribution from *P. sylvestris*. In addition, we identified a group of *P. sylvestris*-like trees that had cpDNA markers characteristic of the *P. mugo* complex. This group of monocormic pines showed clear evidence of admixture between *P. mugo*/*P. uliginosa*, *P. sylvestris*, and also *P. uncinata*. These trees represent a second group of phenotypically distinct hybrids with *P. sylvestris* acting as a mother tree at an early stage of hybridization, and cpDNA delivered by pollination from the polycormic pines of the *P. mugo* complex. All hybrids shared some of the nuclear gene haplotypes observed in the reference populations of parental species. Different levels of introgression of those individuals, as evident from variable assignment to the parental species, indicate that this group of pines includes F1 and subsequent generations of hybrids, although always fertilized by pollen carrying the cpDNA diagnostic for the *P. mugo* complex. This asymmetric introgression between taxa may be the result of selection, but different mechanisms of incompatibility between hybrids cannot be excluded (Curat et al. 2008).

Pinus uliginosa had a heterogeneous genetic background, with one population from Węgliniec reserve showing close genetic similarity to *P. uncinata*. This population showed patterns of admixture not observed in *P. uliginosa* from the species *locus classicus* at Batorów reserve (Neumann 1837) and the population from Mittelwalde. This suggests that some individuals classified as *P. uliginosa* from Węgliniec but also Zieleniec reserve may represent remnants of marginal populations of *P. uncinata*. Interestingly, the pattern of admixture observed in our study is in line with some biochemical and biometric data on cone and needle morphology (Marcysiak and Boratyński 2007 and references therein). These studies showed that *P. uliginosa* from Węgliniec shares some biometric traits with *P. sylvestris*, *P. mugo*, and *P. uncinata* and is distinct as compared to other allopatric stands of the species (Lewandowski et al. 2000; Prus-Głowacki et al. 1998). Therefore, the existence of remnant populations of *P. uncinata* in the Silesian Lowlands seems possible and may result from the expansion of west-European refugia across the northwestern pre-Alpine territories during the late Dryas/early Holocene (Marcysiak and Boratyński 2007). Alternatively, considering the large number of shared ancestral alleles still segregating in the species from the *P. mugo* complex (Wachowiak et al. 2013), interspecific gene flow could create combinations of alleles in individual hybrid trees clustered in our analysis as different taxonomic units. These results provide another dimension to the very complex demographic history of the taxa within the *P. mugo* complex.

Our data contribute to the assessment of the genetic relationships of the taxa from the *P. mugo* complex showing evidence of close genetic identity of *P. uliginosa* as compared to *P. mugo* and *P. uncinata* (net divergence of 0.8–0.9 %, respectively). *Pinus uliginosa* does not harbor a distinct gene pool as compared to *P. mugo* (Fig. 3a), and therefore it should not be

considered as a separate species but rather subspecies within the *P. mugo* complex. The taxon was originally described from the peat bog population at Batorów reserve in the Sudety Mts. (Neumann 1837). In a biometric revision of the complex, it was proposed as a subspecies of *P. uncinata* (Businsky and Kirschner 2006) or as a synonym of *Pinus rotundata*—a pine species forming high-altitude populations in the Alps and Northern Carpathians and small isolated populations in the Pyrenees and Massif Central (Christensen 1987b). Our molecular analysis did not aim to resolve the taxonomic position of *P. uliginosa*. However, the data showed closer genetic similarity of *P. uliginosa* to *P. mugo* than *P. uncinata*. It is clear that more molecular studies are needed to clarify the taxonomic status of several taxa described within the *P. mugo* complex and to evaluate the role of interspecific gene flow with *P. sylvestris* (Christensen 1987b).

Barriers to interspecific hybridization and a lack of evidence for bidirectional gene flow between *P. sylvestris* and *P. mugo* were suggested in previous studies that found hybrid seeds derived only from *P. sylvestris*-like individuals pollinated with *P. mugo* but not from reciprocal crossings (Wachowiak et al. 2005a). A lack of hybrids from crossings between *P. mugo* as a maternal and *P. sylvestris* as a paternal tree, but putative hybrid individuals from reverse crossing combinations (with *P. mugo* as a pollen donor), were found based on a joint analysis of cpDNA, isozymes, and phenotypic characteristics of trees (Wachowiak and Prus-Głowacki 2008) and at nuclear genes in a *P. sylvestris* and *P. mugo* population (Kormutak et al. 2014). Cryptic hybrids between *P. sylvestris* and *P. uncinata* were found in the sympatric populations of the species (Jasińska et al. 2010). So far, the only evidence of reciprocal hybridization was found in a sympatric population of *P. sylvestris* and *P. uliginosa* (Wachowiak et al. 2005b).

Our results suggest that hybrids express distinct phenotypic variability as compared to parental species. In previous biometric and biochemical studies, the variety of morphological forms observed in sympatric populations of *P. sylvestris* and the *P. mugo* complex was explained as either the result of intensive hybridization and introgression that changed the population into a hybrid swarm or as a mixture of mostly pure pine species from the *P. mugo* complex and *P. sylvestris* (Bobowicz 1990; Odrzykoski 2002; Wachowiak et al. 2006b). Our data indicate that hybridization takes place in contact zones of the species and leads to propagation of viable hybrid trees. They exist together with pure parental species and maintain their phenotypic identity.

Natural selection can cause the fixation of advantageous alleles (or chromosomal segments) in ecologically diverged hybrids (Beaumont and Balding 2004; Buerkle and Lexer 2008; Lexer et al. 2003). Introgressed alleles may often have a positive fitness effect in their new genetic background and traits responsible for adaptation can be transferred between

species (Martin et al. 2006). Foreign alleles in different genetic or ecological backgrounds will show a range of fitness outcomes, but only those that increase the adaptive optimum in a given environment will effectively introgress. Consequently, introgression of alleles derived from other species has the potential to speed adaptation (Gompert and Buerkle 2010), which may be particularly influential in populations undergoing spatial or temporal transitions into new environments. Our study provides evidence of successful hybridization within the sympatric study population but no evidence for interspecific gene flow outside the contact zone. It is possible that hybrids have reduced fitness in environmental conditions occupied by parental species, and they may persist best in new habitats. Indeed, our results show that hybrid genotypes have succeeded in peat bogs close to mountain regions, which are environments untypical of either parental species.

Co-existence of morphologically variable taxa and hybrids together with asymmetric gene flow indicates the role of selection in maintaining certain phenotypes. Strong directional selection on loci underlying fitness-related adaptation in the ecologically diverged hybrids should increase the frequency of advantageous alleles. We expect, however, that the effect of selection should be localized in the genome and the genetic background of a species should not be affected by the spatial expansion of an advantageous allele (Curat et al. 2008). Two distinct groups of hybrids seem to have maintained their phenotypic differentiation, and we found signatures of selection at some loci as compared to background variation. *Pinus sylvestris*-like hybrids showed increased frequency of alleles specific to *P. sylvestris* and alleles specific to *P. mugo* at different genes. Similarly, at one polyol transporter gene, oligo- and polycormic hybrids showed differentiation from *P. mugo* but not from *P. uliginosa*. An increase in frequency of alleles unique to one of the parental species at some loci may result from selection of particular alleles in the hybrids that increase their fitness in the peat bog environment. In contrast, no evidence of differentiation at any locus was found between *P. mugo* and *P. uliginosa*, and between *P. uliginosa* and a group of polycormic hybrids from Zieleniec reserve. In the case of parental species, strong directional selection at some loci due to local adaptation in ecologically diverged peat bog environments should increase differentiation between the peat bog and the reference pure-species populations. In the absence of population structure in the parental species, significant differences in allele frequency spectra and/or departures from neutrality between reference and contact zone populations were found at nine loci in *P. mugo* and eight in *P. sylvestris*. These loci showed no evidence of differentiation between pure-species populations. Assuming different patterns of diversity at selectively influenced loci relative to background genetic variation, this increased population differentiation suggests selection in response to specific peat bog environments not optimal for either of the parental species (e.g.,

Eveno et al. 2008; Kujala and Savolainen 2012; Wachowiak et al. 2009).

In many cases, as shown in theoretical models and experimental studies of contact zones, introgression is highly asymmetric (Currat et al. 2008; Petit et al. 2004) and may go from the local to the invading species. If this scenario holds for the investigated pine taxa, then we could consider *P. sylvestris* and possibly *P. uliginosa* as an invading taxon as compared to the local *P. mugo*. At present, however, this contact zone is isolated from the continuous range of any of the parental taxa. In the case of invading species, the pattern of introgression at some neutral loci resulting from the range expansion of a species into an already occupied territory may mimic the effect of selection. Therefore, more studies of the contact zone dynamics (e.g., Cinget et al. 2015) at Zieleniec reserve and its neighborhood are needed. Such studies would help to test invasion models and evaluate the role of demographic processes on the patterns of genome-wide nucleotide sequence variation.

With the presence of different taxa and hybrid groups in environmental conditions not optimal for either of the putative parental species, the contact zone at Zieleniec reserve is a relevant biological system for studying the role of hybridization on adaptation to new environments at the genetic level. This approach has recently been developed in several model plant species demonstrating the role of hybridization and adaptive introgression in the evolution of irises (*Iris*; Arnold et al. 2004), ecological divergence of sunflowers (*Helianthus*; Rieseberg et al. 2007), and the signatures of divergent and balancing selection in champions (*Silene*; Minder and Widmer 2008) and poplar (*Populus*; Lexer et al. 2010). So far, a few genes involved in adaptation or speciation have been identified in plants including hybrid sterility loci (Lexer and Widmer 2008), determinants of flower color-linked pollinator shifts (Hoballah et al. 2007), and genes involved in hybrid necrosis (Bomblies and Weigel 2007). Our study shows that the investigated taxa maintain genetic and phenotypic differentiation in the presence of extensive gene flow. Considering the abundance of trees growing on peat bog in our focal populations, both *P. sylvestris*-like hybrids and oligo- and polycormic *P. uliginosa*-like pines could serve as suitable mapping populations in the search for loci underlying local adaptation and genetic and phenotypic differentiation between taxa.

Acknowledgments The research was financially supported by the Polish National Science Centre (grant no. 2011/01/B/NZ8/01634). WŻ and BW acknowledge financial support from Polish National Science Centre (grant no. DEC-2012/05/E/NZ9/03476). WW and SC acknowledge financial support from NERC (grant no. NE/H003959/1). We thank Euforgen network for providing the distribution map of Scots pine. We gratefully acknowledge the comments by the Associate Editor and two anonymous reviewers who helped us to improve the earlier version of the manuscript.

Data Archiving Statement The nucleotide sequences of the studied loci were submitted to NCBI repositories (accession nos. KC979194–KC980906; see Supplementary material for details).

Open Access This article is distributed under the terms of the Creative Commons Attribution 4.0 International License (<http://creativecommons.org/licenses/by/4.0/>), which permits unrestricted use, distribution, and reproduction in any medium, provided you give appropriate credit to the original author(s) and the source, provide a link to the Creative Commons license, and indicate if changes were made.

References

- Andrew RL, Rieseberg LH (2013) Divergence is focused on few genomic regions early in speciation: incipient speciation of sunflower ecotypes. *Evolution* 67:2468–2482
- Arnold ML, Bouck AC, Scott Cornman R (2004) Verne Grant and Louisiana irises: is there anything new under the sun? *New Phytol* 161:143–149
- Arnold ML, Martin NH (2010) Hybrid fitness across time and habitats. *Trends Ecol Evol* 25:530–536
- Baack EJ, Rieseberg LH (2007) A genomic view of introgression and hybrid speciation. *Curr Opin Genet Dev* 17:513–518
- Beaumont MA, Balding DJ (2004) Identifying adaptive genetic divergence among populations from genome scans. *Mol Ecol* 13:969–980
- Bobowicz MA (1990) Hybrids between *Pinus mugo* Turra x *Pinus sylvestris* L. from “Bór na Czerwonom” reserve in Novotarska Valley [in Polish]. Wyd Nauk UAM, Poznań
- Bomblies K, Weigel D (2007) Hybrid necrosis: autoimmunity as a potential gene-flow barrier in plant species. *Nat Rev Genet* 8:382–393
- Boratyńska K, Jasińska AK, Boratyński A (2015) Taxonomic and geographic differentiation of *Pinus mugo* complex on the needle characteristics. *Sys Biodiv*:1–15
- Buerkle CA, Lexer C (2008) Admixture as the basis for genetic mapping. *Trends Ecol Evol* 23:686–694
- Businsky R, Kirschner J (2006) Nomenclatural notes on the *Pinus mugo* complex in Central Europe. *Phyton Ann Rei Bot A* 46(1):129–139
- Christensen KI (1987a) A morphometric study of the *Pinus mugo* Turra complex and its natural hybridization with *P. sylvestris* L. (Pinaceae). *Feddes Repert* 98:623–635
- Christensen KI (1987b) Taxonomic revision of the *Pinus mugo* complex and *P. x rhaetica* (*P. mugo* x *sylvestris*) (Pinaceae). *Nord J Bot* 7: 383–408
- Cinget B, de Lafontaine G, Gérardi S, Bousquet J (2015) Integrating phylogeography and paleoecology to investigate the origin and dynamics of hybrid zones: insights from two widespread North American firs. *Mol Ecol* 24:2856–2870
- Corander J, Tang J (2007) Bayesian analysis of population structure based on linked molecular information. *Math Biosci* 205:19–31
- Critchfield WB, Little E (1966) Geographic distribution of the Pines of the world. U.S. Department of Agriculture
- Currat M, Ruedi M, Petit R, Excoffier L (2008) The hidden side of invasions: massive introgression by local genes. *Evolution* 62: 1908–1920
- Eveno E, Collada C, Guevara MA et al (2008) Contrasting patterns of selection at *Pinus pinaster* Ait. drought stress candidate genes as revealed by genetic differentiation analyses. *Mol Biol Evol* 25: 417–437

- Excoffier L, Lischer HEL (2010) Arlequin suite ver 3.5: a new series of programs to perform population genetics analyses under Linux and Windows. *Mol Ecol Res* 10:564–567
- Gompert Z, Buerkle AC (2010) Introgress: a software package for mapping components of isolation in hybrids. *Mol Ecol* 10:378–384
- González-Martínez SC, Krutovsky KV, Neale DB (2006) Forest-tree population genomics and adaptive evolution. *New Phytol* 170:227–238
- Gross BL, Rieseberg LH (2005) The ecological genetics of homoploid hybrid speciation. *J Hered* 96:241–252
- Hey J, Wakeley J (1997) A coalescent estimator of the population recombination rate. *Genetics* 145:833–846
- Hoballah ME, Gübitz T, Stuurman J et al (2007) Single gene-mediated shift in pollinator attraction in *Petunia*. *Plant Cell Online* 19:779–790
- Hurme P, Sillanpää MJ, Arjas E, Repo T, Savolainen O (2000) Genetic basis of climatic adaptation in Scots pine by Bayesian quantitative trait locus analysis. *Genetics* 156:1309–1322
- Jasińska AK, Wachowiak W, Muchewicz E, Boratyńska K, Montserrat JM, Boratyński A (2010) Cryptic hybrids between *Pinus uncinata* and *P. sylvestris*. *Bot J Linn Soc* 163:473–485
- Kormutak A, Brana M, Manka P, Galgoci M, Libantova J, Cemek V, Bolecek P, Gömöry D (2014) Hybridization processes in putative hybrid swarms of Scots pine and mountain dwarf pine as revealed by chloroplast DNA. *Acta Biol Cracov Bot* 56(2):61–66
- Kujala S, Savolainen O (2012) Sequence variation patterns along a latitudinal cline in Scots pine (*Pinus sylvestris*): signs of clinal adaptation? *Tree Genet Genome* 8:1451–1467
- Lewandowski A, Boratyński A, Mejnartowicz L (2000) Allozyme investigations on the genetic differentiation between closely related pines *Pinus sylvestris*, *P. mugo*, *P. uncinata* and *P. uliginosa* (Pinaceae). *Plant Syst Evol* 221:15–24
- Lexer C, Widmer A (2008) The genic view of plant speciation: recent progress and emerging questions. *Philos Trans R Soc Lond B Biol Sci* 363:3023–3036
- Lexer C, Welch ME, Raymond O, Rieseberg LH (2003) The origin of ecological divergence in *Helianthus paradoxus* (Asteraceae): selection on transgressive characters in a novel hybrid habitat. *Evolution* 57:1989–2000
- Lexer C, Joseph JA, van Loo M et al (2010) Genomic admixture analysis in European *Populus* spp. reveals unexpected patterns of reproductive isolation and mating. *Genetics* 186:699–712
- Librado P, Rozas J (2009) DnaSP v5: a software for comprehensive analysis of DNA polymorphism data. *Bioinform* 25:1451–1452
- Marcysiak K, Boratyński A (2007) Contribution to the taxonomy of *Pinus uncinata* (Pinaceae) based on cone characters. *Plant Syst Evol* 264:57–73
- Martin NH, Bouck AC, Arnold ML (2006) Detecting adaptive trait introgression between *Iris fulva* and *I. brevicaulis* in highly selective field conditions. *Genetics* 172:2481–2489
- Minder AM, Widmer A (2008) A population genomic analysis of species boundaries: neutral processes, adaptive divergence and introgression between two hybridizing plant species. *Mol Ecol* 17:1552–1563
- Nei M (1987) *Molecular evolutionary genetics*. Columbia University Press, New York
- Neumann C (1837) Über eine auf den Seefeldern der Reinerz und einigen ähnlichen Gebirgsmooren der königl. Oberforsterei Karlsberg in der Grafschaft Glatz vorkommende noch unbeschriebene Form der Gattung *Pinus* [in German]. *Jahresb Schlesische Ges*
- Odrzykoski IJ (2002) Genetic variation study of Dwarf mountain pine (*Pinus mugo*) with the use of molecular and biochemical markers [in Polish]. *Wyd Nauk UAM, Poznań*
- Petit RJ, Bodénès C, Ducouso A, Roussel G, Kremer A (2004) Hybridization as a mechanism of invasion in oaks. *New Phytol* 161:151–164
- Petit RJ, Excoffier L (2009) Gene flow and species delimitation. *Trends Ecol Evol* 24:386–393
- Prus-Głowacki W, Bujas E, Ratyńska H (1998) Taxonomic position of *Pinus uliginosa* Neumann as related to other taxa of *Pinus mugo* complex. *Acta Soc Bot Pol* 67:269–274
- Rieseberg LH, Kim S-C, Randell RA, Whitney KD, Gross BL, Lexer C, Clay K (2007) Hybridization and the colonization of novel habitats by annual sunflowers. *Genetica* 129:149–165
- Storey JD, Tibshirani R (2003) Statistical significance for genome wide studies. *Proc Natl Acad Sci U S A* 100:9440–9445
- Tajima F (1989) Statistical-method for testing the neutral mutation hypothesis by DNA polymorphism. *Genetics* 123:585–595
- Tamura K, Stecher G, Peterson D, Filipki A, Kumar S (2013) MEGA6: molecular evolutionary genetics analysis version 6.0. *Mol Biol Evol* 30:2725–2729
- Wachowiak W, Prus-Głowacki W (2008) Hybridisation processes in sympatric populations of pines *Pinus sylvestris* L., *P. mugo* Turra and *P. uliginosa* Neumann. *Plant Syst Evol* 271:29–40
- Wachowiak W, Leśniewicz K, Odrzykoski I, Augustyniak H, Prus-Głowacki W (2000) Species specific cpDNA markers useful for studies on the hybridization between *Pinus mugo* and *P. sylvestris*. *Acta Soc Bot Pol* 69:273–276
- Wachowiak W, Lewandowski A, Prus-Głowacki W (2005a) Reciprocal controlled crosses between *Pinus sylvestris* and *P. mugo* verified by a species-specific cpDNA marker. *J Appl Genet* 46:41–43
- Wachowiak W, Celiński K, Prus-Głowacki W (2005b) Evidence of natural reciprocal hybridisation between *Pinus uliginosa* and *P. sylvestris* in the sympatric population of the species. *Flora* 200: 563–568
- Wachowiak W, Stephan BR, Schulze I, Prus-Głowacki W, Ziegenhagen B (2006a) A critical evaluation of reproductive barriers between closely related species using DNA markers—a case study in *Pinus*. *Plant Syst Evol* 257:1–8
- Wachowiak W, Odrzykoski I, Myczko Ł, Prus-Głowacki W (2006b) Lack of evidence on hybrid swarm in the sympatric population of *Pinus mugo* and *P. sylvestris*. *Flora* 201:307–316
- Wachowiak W, Balk P, Savolainen O (2009) Search for nucleotide diversity patterns of local adaptation in dehydrins and other cold-related candidate genes in Scots pine (*Pinus sylvestris* L.). *Tree Genet Genome* 5:117–132
- Wachowiak W, Boratyńska K, Cavers S (2013) Geographical patterns of nucleotide diversity and population differentiation in three closely related European pine species in the *Pinus mugo* complex. *Bot J Linn Soc* 172:225–238
- Weir BS, Cockerham CC (1984) Estimating F-statistics for the analysis of population structure. *Evolution* 38:1358–1370
- Whitney KD, Randell RA, Rieseberg LH (2010) Adaptive introgression of abiotic tolerance traits in the sunflower *Helianthus annuus*. *New Phytol* 187:230–239
- Zeng K, Shi S, Wu C-I (2007) Compound tests for the detection of hitchhiking under positive selection. *Mol Biol Evol* 24:1898–1908