



Fine Physical and Genetic Mapping of Powdery Mildew Resistance Gene *MIIW172* Originating from Wild Emmer (*Triticum dicoccoides*)

Shuhong Ouyang^{1,9}, Dong Zhang^{1,9}, Jun Han^{1,2*}, Xiaojie Zhao¹, Yu Cui¹, Wei Song^{1,3}, Naxin Huo⁴, Yong Liang¹, Jingzhong Xie¹, Zhenzhong Wang¹, Qihong Wu¹, Yong-Xing Chen¹, Ping Lu¹, De-Yun Zhang¹, Lili Wang¹, Hua Sun⁵, Tsomin Yang¹, Gabriel Keeble-Gagnere⁶, Rudi Appels⁶, Jaroslav Doležel⁷, Hong-Qing Ling⁵, Mingcheng Luo⁸, Yongqiang Gu⁴, Qixin Sun¹, Zhiyong Liu^{1*}

1 State Key Laboratory for Agrobiotechnology/Beijing Key Laboratory of Crop Genetic Improvement/Key Laboratory of Crop Heterosis Research & Utilization, Ministry of Education, China Agricultural University, Beijing, China, **2** Agriculture University of Beijing, Beijing, China, **3** Maize Research Center, Beijing Academy of Agricultural and Forestry Sciences, Beijing, China, **4** USDA-ARS West Regional Research Center, Albany, California, United States of America, **5** State Key Laboratory of Plant Cell and Chromosome Engineering, Institutes of Genetics & Developmental Biology, Chinese Academy of Sciences, Beijing, China, **6** Murdoch University, Perth, Western Australia, Australia, **7** Institute of Experimental Botany, Centre of Plant Structural and Functional Genomics, Olomouc, Czech Republic, **8** Department of Plant Sciences, University of California, Davis, Davis, California, United States of America

Abstract

Powdery mildew, caused by *Blumeria graminis* f. sp. *tritici*, is one of the most important wheat diseases in the world. In this study, a single dominant powdery mildew resistance gene *MIIW172* was identified in the IW172 wild emmer accession and mapped to the distal region of chromosome arm 7AL (bin7AL-16-0.86-0.90) via molecular marker analysis. *MIIW172* was closely linked with the RFLP probe *Xpsr680*-derived STS marker *Xmaq2185* and the EST markers *BE405531* and *BE637476*. This suggested that *MIIW172* might be allelic to the *Pm1* locus or a new locus closely linked to *Pm1*. By screening genomic BAC library of durum wheat cv. Langdon and 7AL-specific BAC library of hexaploid wheat cv. Chinese Spring, and after analyzing genome scaffolds of *Triticum urartu* containing the marker sequences, additional markers were developed to construct a fine genetic linkage map on the *MIIW172* locus region and to delineate the resistance gene within a 0.48 cM interval. Comparative genetics analyses using ESTs and RFLP probe sequences flanking the *MIIW172* region against other grass species revealed a general co-linearity in this region with the orthologous genomic regions of rice chromosome 6, *Brachypodium* chromosome 1, and sorghum chromosome 10. However, orthologous resistance gene-like RGA sequences were only present in wheat and *Brachypodium*. The BAC contigs and sequence scaffolds that we have developed provide a framework for the physical mapping and map-based cloning of *MIIW172*.

Citation: Ouyang S, Zhang D, Han J, Zhao X, Cui Y, et al. (2014) Fine Physical and Genetic Mapping of Powdery Mildew Resistance Gene *MIIW172* Originating from Wild Emmer (*Triticum dicoccoides*). PLoS ONE 9(6): e100160. doi:10.1371/journal.pone.0100160

Editor: Tongming Yin, Nanjing Forestry University, China

Received: January 27, 2014; **Accepted:** May 22, 2014; **Published:** June 23, 2014

This is an open-access article, free of all copyright, and may be freely reproduced, distributed, transmitted, modified, built upon, or otherwise used by anyone for any lawful purpose. The work is made available under the Creative Commons CC0 public domain dedication.

Funding: This work was financially supported by Ministry of Agriculture (2014ZX08009-006B), Ministry of Science & Technology of China (2011AA100104), the National Science Foundation of China (31030056), Ministry of Education of China (111-2-03), and Chinese Scholarship Council Fellowship (to Shuhong Ouyang). The funders had no role in study design, data collection and analysis, decision to publish, or preparation of the manuscript.

Competing Interests: The authors have declared that no competing interests exist.

* Email: zhiyongliu@cau.edu.cn (ZL); hanjun4226@163.com (JH)

† These authors contributed equally to this work.

Introduction

Wheat accounts for approximately 30% of the global cereal consumption (FAO: World Agriculture: towards 2015/2030), and is of fundamental importance for food security. Ensuring the yield increase of wheat to meet future needs has become an important focus in agricultural research. Powdery mildew, caused by *Blumeria graminis* f. sp. *tritici* (*Bgt*), is one of the most devastating diseases of common wheat (*Triticum aestivum*, AABBDD; $2n = 6x = 42$) in China and worldwide. Significant reductions of yield, flour quality, and other related grain qualities were reported when severe epidemics occurred in cool humid climates [1]. Development of resistant cultivars containing single or stacked resistance genes is a major focus of wheat breeding program because growth of such cultivars has proved to be the most effective agronomic approach

to control disease losses. Currently, more than 60 powdery mildew resistance genes/alleles have been identified at 43 loci (*Pm1* – *Pm50*, *Pm18* = *Pm1c*, *Pm22* = *Pm1e*, *Pm23* = *Pm4c*, *Pm31* = *Pm21*) in wheat and its wild relatives [2–4].

However, since major resistance genes tend to become ineffective within a short period due to rapid evolution of mildew populations, it is necessary to search continually for new sources of resistance in wheat breeding. Wild emmer, *T. turgidum* var. *dicoccoides* [*T. dicoccoides*, (AABB; $2n = 4x = 28$)], as the progenitor of the cultivated tetraploid and hexaploid wheat, is crossable with both durum and common wheat and has great potential for wheat improvement [5]. Wild emmer is a valuable source of powdery mildew resistance [6–9] and has been extensively studied for identification of new alleles and genes useful for wheat improvement. Among the characterized wheat powdery mildew genes,

Pm16, *Pm26*, *Pm30*, *Pm36*, *Pm41*, *Pm42*, *MIIW72*, *MLZec1*, *PmG3M*, *MIIW170*, *PmG16*, *PmAS846* and *HSM1* have been identified in wild emmer and introduced into cultivated wheat [3,10].

Molecular marker technology has greatly accelerated gene/trait tagging, thereby improving development of elite variety through marker-assisted selection in breeding programs. Valuable genetic and genomic resources useful for molecular marker development in wheat are publicly available, and a total of 1,286,372 wheat expressed sequence tags (ESTs) have been deposited in the NCBI database (<http://www.ncbi.nlm.nih.gov/>). More than 16,000 ESTs have been mapped in the wheat deletion bins collection [11]. These resources provide opportunities for development of functional molecular markers [eg. sequence tagged sites (STS) and single nucleotide polymorphisms (SNP)], and performing comparative genomics analyses. Simple sequence repeat (SSR) and STS markers developed from ESTs are often associated with the coding regions of the genome and can be converted into easy and reliable PCR-based markers useful for trait mapping and marker assisted selection [12–14].

Although the complete genome sequence of wheat is not expected to be available in the near future due to the complexity and huge genome size, a large amount of wheat sequences have been generated to provide genome-wide sequence information for marker development [15–18]. In addition, the gene order in grass species was generally conserved [19–22] and the synteny facilitates comparative genomics analyses in grass families [23]. The availability of genome sequence information from rice [24], *Brachypodium* [25], and Sorghum [20] allows for improved comparisons and predictions of gene conservation in other genomes like wheat. The assumption is that if the gene order within a defined region is conserved across these three species (orthologous), the corresponding genomic region in wheat might have maintained similar gene conservation during evolution [15,26–28]. These predictions enabled colinearity or synteny analyses, which served as a primary source of genome information for wheat marker development and mapping [29–31,21].

In this paper, we report the identification of a powdery mildew resistance gene *MIIW172* derived from wild emmer and mapping the gene to chromosome arm 7AL. We have also developed a high-resolution genetic linkage map with alignment to a draft physical map covering the *MIIW172* region by using a combinational approach of comparative and genetic analysis, and BAC screening and sequencing.

Materials and Methods

Plant materials

Wild emmer accession IW172 (original accession No. G-797-M, originally provided by Dr. Z. Gerechter-Amitai of the Agricultural Research Organization, the Volcani Center, Israel), was highly resistant to *Bgt* isolate E09, a prevailing pathotype in Beijing, China, with infection type (IT) 0, in both the seedling and adult plant stages [32]. Durum wheat line Mo75 was highly susceptible to E09 with IT 3–4. The F₁ hybrid between Mo75 and IW172 (11 F₁ hybrids for initial genetic mapping and 127 F₁ hybrids for fine mapping) was self-pollinated to generate an F₂ segregating population and corresponding F_{2:3} families.

Three nulli-tetrasomics (N7AT7B, N7BT7A, and N7DT7A), two ditelosomics (DT7AS and DT7AL) and six 7AL deletion lines of hexaploid wheat Chinese Spring, (kindly provided by Drs. WJ Raupp and BS Gill, Wheat Genetics Resource Centre, Kansas State University, USA), were used for chromosome-arm assignment and bin mapping of molecular markers linked to the powdery mildew resistance locus since some markers were mapped

on more than one chromosome before (GrainGenes, <http://wheat.pw.usda.gov/GG2/index.shtml>).

Powdery mildew assessments

The prevailing *Bgt* isolate E09 used for powdery mildew evaluation was obtained from Dr. Xiayu Duan, Institute of Plant Protection, Chinese Academy of Agricultural Sciences, Beijing, China. Isolate E09 is virulent on *Pm1a*, *Pm3a*, *Pm3c*, *Pm5a*, *Pm6*, *Pm7*, *Pm8*, *Pm17* and *Pm19* [7], but avirulent on IW172. The E09 isolate was used to test the resistance of Mo75, IW172, F₁, F₂ plants and F_{2:3} progenies at the seedling stage under controlled greenhouse conditions. The F₂-derived F₃ families (20 seedlings of each F₃ family) were tested to confirm the phenotypes and establish the resistance genotype of each F₂ plant. Seedlings were inoculated with E09 when the first leaf was fully expanded. Inoculations were performed by brushing conidia from sporulating highly susceptible seedlings of common wheat cv. Xuezaao. Infection types were scored 15 days after inoculation when the susceptible Xuezaao control became heavily infected. Disease symptoms were recorded on scales of 0, 0_z, and 1, 2, 3, 4, with 0 for no visible symptoms, 0_z for necrotic flecks, and 1, 2, 3, 4 for highly resistant, resistant, susceptible and highly susceptible reactions, respectively. F₂ genotypes were predicted based on the responses of the F₃ families and classified as homozygous resistant, segregating and homozygous susceptible.

Genomic DNA extraction and Bulk Segregant Analysis

Genomic DNA was extracted by the cetyltrimethylammonium bromide (CTAB) method [33] from uninfected seedlings of parental IW172 wild emmer, durum wheat Mo75 and F₂ plants of the Mo75/IW172 cross. Equal amounts of DNA from 10 homozygous resistant and 10 homozygous susceptible individuals of each F₃ progeny were randomly selected to establish resistant and susceptible DNA pools for bulked segregant analysis (BSA) [34]. Each bulk was at a final concentration of 50 ng·μl⁻¹. The DNA concentration for BSA was measured using Quant-iT PicoGreen dsDNA Assay Kit (Invitrogen).

Molecular marker analysis

Initially, 175 SSR primer pairs (*Xgwm*, *Xwmc*, *Xbarc*, and *Xcfa* series in GrainGenes 2.0 website <http://wheat.pw.usda.gov/GG2/index.shtml>), mapped to A and B genomes of wheat were chosen to screen the parents, resistant and susceptible DNA bulks. The resulting polymorphic markers were used to genotype the F₂ population. After that, the Chinese Spring nulli-tetrasomics and deletion stocks of homoeologous group 7 were used to determine the chromosomal and bin locations of these polymorphic makers. In addition, STS markers closely linked to the *Mlm2033* and *Mlm80* powdery mildew resistance genes on chromosome arm 7AL were used for analysis [35]. Polymerase chain reaction (PCR) was conducted in 10 μl reactions containing 10 mM Tris-HCl, pH 8.3, 50 mM KCl, 1.5 mM MgCl₂, 0.2 mM dNTPs, 25 ng of each primer, 50 ng of genomic DNA, and 0.75 U of *Taq* DNA polymerase, and DNA amplifications were conducted at 94°C for 5 min, followed by 40 cycles at 94°C for 45 s, 50–60°C (depending on specific primers) for 45 s, and 72°C for 90 s, and the reactions were terminated after a final extension at 72°C for 10 min. The PCR products were mixed with 2 μl of loading buffer (98% formamide, 10 mM EDTA, 0.25% bromophenol blue, and 0.25% xylene cyanol), separated on 8% non-denaturing polyacrylamide gels (39 acrylamide: 1 bisacrylamide), and visualized following silver staining.

Comparative genomics analysis and EST-STS marker development

To saturate the region containing the *MIW172* resistance gene with molecular markers, sequences of RFLP probes PSR121, PSR148, PSR680, MWG2062, and CDO347 [36,37] and 7AL bin mapped ESTs BE637476, BE405531 (MAG1757) and CD452874 (MAG1759) [35,38] were used in Blastn searches against the genome sequences of rice, sorghum and *Brachypodium*. The corresponding syntenic genomic regions of rice, sorghum, and *Brachypodium* were identified for homology comparisons (Table 1). The complete set of rice genes [39] was downloaded from the “Rice Annotation Project” website at <http://rice.plantbiology.msu.edu/index.shtml>; *Brachypodium* and sorghum genes were obtained from “Phytozome” at <http://www.phytozome.net/> [40]. To identify additional wheat EST-STS markers that are potentially linked to the resistance gene, the sequences of putative *Brachypodium* genes at the syntenic genomic region were used as queries to search for homologous wheat ESTs and these wheat ESTs were used to design PCR primers (Table 2) using primer premier 5.0 (<http://www.premierbiosoft.com/primerdesign/>). PCR products were separated on 8% non-denaturing PAGE gels [41] for polymorphism detections and polymorphic markers were tested on DNAs of F₂ mapping population.

Data analysis

Deviations of observed data from theoretically expected segregation ratios were tested using Chi-squared (χ^2) tests for goodness-of-fit. MapMaker 3.0 [42] was used to determine linkage of polymorphic markers and the resistance gene. A LOD score of 3.0 was used as the threshold for declaration of linkage. The genetic maps were constructed with the software Mapdraw V2.1 [43].

Identification, sequencing and analysis of BAC clones

The *T. turgidum durum* cv. Langdon BAC library (including 516,096 BAC clones stored in 1,344 384-well plates) [44] was arrayed in 280 DNA pools and used for PCR screening with the co-segregated marker *XRGA-C6* based on the initial mapping result. Two positive BAC clones were identified. The Chinese Spring 7AL-specific BAC library (TaaCs7ALhA, 15.3×coverage, Keeble-Gagnere, manuscript in preparation) consists of 5,223 minimum tilling path (MTP) BAC clones was screened by PCR

using the most closely linked marker *WGGC4663*. A BAC contig with 12 BACs was identified and selected for sequencing.

The two Langdon BACs’ DNA was pooled together and the 12 Chinese Spring BACs’ DNA was divided into 3 pools. The 4 pools were barcoded separately for 454 sequencing. Five micrograms of pooled BACs DNA was used to prepare the 454 sequencing library using the GS Titanium rapid library and 3kb span paired-end library preparation kit following the manufacturer’s instructions (Roche Diagnostics). The 454 sequencing rapid libraries were processed using the GS FLX plus Titanium LV emPCR (Lib-L) and GS FLX plus Titanium sequencing (GS FLX+) kits (Roche Diagnostics) according to the manufacturer’s instructions. The paired-end libraries were processed using GS FLX plus Titanium LV emPCR (Lib-L) and GS Titanium Sequencing Kit XLR70 (Roche Diagnostics). The cross-match program (University of Washington, Seattle, WA, USA) and Roche 454 Newbler were applied to remove the vector and barcode sequences and perform sequence assembly.

All analyses were performed on Linux systems. Gene prediction was performed using the combination of MAKER from GMOD (<http://www.gmod.org/wiki/MAKER>) and TriAnnot pipeline from URGI database (<http://wheat-urgi.versailles.inra.fr/Tools>). The NBS-LRR domain of resistance gene analogs (RGAs) was identified using Pfam (<http://pfam.sanger.ac.uk/>) and stand-alone BLAST obtained from the National Center for Biotechnology Information (NCBI: www.ncbi.nlm.nih.gov/). We used coding sequence data sets from the sorghum genome version 1 [20], rice (*Oryza sativa*) genome 6 (rice.plantbiology.msu.edu), and *Brachypodium* genome version 1 [25].

Results

Genetic analysis of the powdery mildew resistance gene in IW172

The IW172 wild emmer accession was highly resistant to the E09 *Bgi* isolate (IT value 0), whereas durum wheat line Mo75 was highly susceptible (IT value 4). The F₁ plants from the Mo75 × IW172 cross were highly resistant (IT value 0-0), indicating complete dominance of resistance. In our initial genetic mapping using 115 F_{2:3} families, the observed ratio of 26 homozygous resistant: 55 segregating: 34 homozygous susceptible fitted the expected 1:2:1 ratio for monogenic resistance ($\chi^2 = 1.33$, lower than $\chi^2_{0.05;2} = 5.99$, $0.75 > P > 0.5$; Table 3). In our fine mapping using a larger population of 4192 F_{2:3} families, the phenotypic

Table 1. Mapped wheat EST markers and orthologous gene pairs among *Brachypodium*, rice and sorghum

Wheat maker	Wheat EST	Rice	<i>Brachypodium</i>	Sorghum	Pfam Description
<i>XRGA-C6</i> and <i>XRGA-B6</i>	TC432233	Os02g16060	<i>Bradi1g29670</i>	<i>Sb04g009750</i>	NBS-LRR disease resistance protein
NA	TC421430	Os06g51260	<i>Bradi1g29680</i>	<i>Sb10g030960</i>	MYB family transcription factor
NA	CA694329	Os06g51250	<i>Bradi1g29690</i>	<i>Sb10g030940</i>	EF hand family protein
NA	TC443015	Os06g51240	<i>Bradi1g29710</i>	<i>Sb10g030930</i>	Expressed protein
WGGC4655	CK153650	Os06g51220	<i>Bradi1g29730</i>	<i>Sb10g030910</i>	HMG1/2
WGGC4654	TC386221	Os09g15480	<i>Bradi1g29750</i>	<i>Sb10g030900</i>	Ser/Thr-rich protein T10 in DGCR region
WGGC4653	TC390087	Os06g51210	<i>Bradi1g29760</i>	<i>Sb10g030890</i>	Zinc finger family protein, putative
<i>Xmag1759</i>	CD452874	Os06g51170	<i>Bradi1g29780</i>	<i>Sb10g030880</i>	Serine/threonine-protein kinase Cx32
<i>Xmag1757</i>	BE405531	Os06g51160	<i>Bradi1g29780</i>	<i>Sb10g030870</i>	Glycosyl transferase family 8
BE637476	BE637476	Os06g51150	<i>Bradi1g29800</i>	<i>Sb10g030840</i>	Catalase isozyme B

doi:10.1371/journal.pone.0100160.t001

Table 2. EST-STS, EST-SSR and SSR markers linked to powdery mildew resistance gene *MIIW172*

Makers	Maker type	Forward primer (5'-3')	Reverse primer (5'-3')
<i>XRGA-B6</i>	EST-STS	TTGCTCTGCTCTTCTTCTT	TATGGTGGTTGGTGGTATGT
<i>XRGA-C6</i>	EST-STS	ATTGGGACGGGGATGAAGAT	GGGCAGACAGGGAAAAAGTG
<i>WGGC4653</i>	EST-STS	ATCCATCACTTCACGCTC	GTTCTAACCCAACAATGT
<i>WGGC4654</i>	EST-STS	AGACTAATGACTGACACGACG	CTGAAAGAACTGCTGTGC
<i>WGGC4655</i>	EST-STS	CATCCGCCTTCTTCGCT	TTCCGATTTCGCTCAAGC
<i>WGGC4656</i>	EST-STS	GAGAGTGTGGTTGATAGG	GCGAAGCATTTCAGTAG
<i>WGGC4657</i>	EST-STS	TAATGTTGCTCACTCCG	CCTCTCCATAATGCGAT
<i>WGGC4658</i>	SSR	ACAGCGGCTTGTTCCTG	CACTTGCAGCATTTCATCC
<i>WGGC4659</i>	SSR	CATATCATGGTTGCCTCCTA	TCTCAACTGAATTCGAAACAT
<i>WGGC4660</i>	SSR	TTAGCGTCATGTGATTAGGAT	CTAGAGGTCCCAACATTATT
<i>WGGC4661</i>	SSR	CGACAATCATTGTGTATGTG	TGTAGACACATTGTTGAAAGAAA
<i>WGGC4662</i>	SSR	CCAAGAGAAACGGATACAAT	TTTACCTTGACAGATTCTGTT
<i>WGGC4663</i>	EST-SSR	GAAAAAGAAAAACAGGAGAA	GGGAACCACTACTAAACAC
<i>WGGC4664</i>	SSR	ATTGAAAAACGTGAAACAG	CTCTGTTTGTCTGAGCGTAG
<i>WGGC4665</i>	SSR	GGAGCCAGTACTAAACACA	AGGAGAAAAACCGAGTAAAAAT
<i>WGGC4666</i>	SSR	CTCCGAAAAATTTCAAATCAG	TTGGCATATGAACCAATACAT
<i>WGGC4667</i>	SSR	GAGGGAACCGTACAATAACA	ACTCACAGAGCTCACCAGAT
<i>WGGC4668</i>	SSR	GTTTGTCTGAGCGTAGGAC	AACGTGAAACCGGTACAAC

doi:10.1371/journal.pone.0100160.t002

segregation ratio was: 1046 homozygous resistant, 2159 segregating and 987 homozygous susceptible, and also corresponded to the expected 1:2:1 ratio for monogenic resistance ($\chi^2 = 5.45$, lower than $\chi^2_{0.05,2} = 5.99$, $0.1 > P > 0.05$; Table 3). Hence, the powdery mildew resistance gene in IW172 was provisionally designated *MIIW172*.

SSR and EST mapping of *MIIW172*

Bulked segregant analysis was employed to screen wheat *Xgwm* SSR primer pairs [45]. One marker, *Xgwm344* was polymorphic between the resistant and susceptible pools and confirmed to be linked to *MIIW172* in the F₂ population. Since *Xgwm344* is closely linked to *Pm1e* on the distal part of 7AL [46], additional SSR markers on 7AL arm were screened for polymorphisms between the pools. Three SSR markers, *Xwmc525*, *Xcfa2040* and *Xcfa2240*, were found to be linked to the *MIIW172*.

A set of Chinese Spring homoeologous group 7 nullisomic-tetrasomic, ditelosomic and deletion lines were employed for chromosomal bin assignment of *MIIW172*-linked SSR markers *Xgwm344*, *Xwmc525*, *Xcfa2240* and *Xcfa2040*. All four SSR markers were physically mapped to the distal bin 7AL-16 (0.86–0.90) (Fig. 1A), demonstrating that *MIIW172* maps to the distal part of 7AL.

EST-STS primer pairs that mapped physically to the distal 7AL-16 (0.86–0.90) bin [47] (http://wheat.pw.usda.gov/SNP/primers/contig_primer_list.xls) were selected to screen for polymorphisms between the IW172 and Mo75 parental lines, and the resistant and susceptible DNA pools. Out of 22 primer pairs tested, only one EST marker *BE637476* was polymorphic and linked with *MIIW172*. Five STS markers linked to the *Mlm2033* and *Mlm80* powdery mildew resistance genes located on chromosome 7AL [35] were also tested for polymorphism in the *MIIW172* mapping population. *MAG1757* and *MAG2185* were polymorphic between IW172 and Mo75, as well as the resistant and susceptible DNA pools and also linked to the *MIIW172* locus. Based on its linkage

map position, *MIIW172* could be assigned to the corresponding chromosome region of the *Mlm2033*, *Mlm80* and *Pm1* loci on 7AL (Fig. 1B).

Comparative mapping of the *MIIW172* region

In order to saturate the *MIIW172* genetic map, sequences of five RFLP probes, PSR121, PSR148, PSR680 (*MAG2185*), CDO347 and C607 [37] closely linked with *Pm1a*, and three ESTs, BE637476, BE405531 (*MAG1757*), and CD452874 (*MAG1759*) flanking *MIIW172* on the distal bin of 7AL were used as queries to search the rice, sorghum and *Brachypodium* genome sequences to identify syntenic genomic regions corresponding to the *MIIW172* locus in wheat using an expected value of 1E-10 and identity $\geq 80\%$ as cutoff points [48]. Both PSR148 and BE637476 detected putative orthologs on *Brachypodium* chromosome 1 (*Bradi1g29800*), rice chromosome 6 (*Os06g51150*) and sorghum chromosome 10 (*Sb10g030840*). A putative ortholog of BE405531 (*MAG1757*) was also found in *Brachypodium* (*Bradi1g29790*), but not in rice or sorghum. CD452874 (*MAG1759*) was homologous to the *Brachypodium* gene *Bradi1g29780*, which corresponded to two genes in rice (*Os06g51160* and *Os06g51170*) and sorghum (*Sb10g030870* and *Sb10g030880*), indicating gene duplications in rice and sorghum. PSR680 (*MAG2185*) was homologous to a RGA cluster (*Bradi1g29630*, *Bradi1g29640*, *Bradi1g29660*, and *Bradi1g29670*) in *Brachypodium* (Fig. 1D). However, no RGA was detected in the corresponding genomic regions of rice and sorghum (Fig. 1E, 1F). Nevertheless, our analysis revealed a syntenic relationship between the *MIIW172* genomic region in wheat chromosomal bin C-7AL16-0.86-0.90 (from BE637476 to *MAG2185*) and *Brachypodium* chromosome 1 (a 150-kb region from *Bradi1g29610* to *Bradi1g29800*), rice chromosome 6 (an 85.8-kb region from *Os06g51260* to *Os06g51150*) and sorghum chromosome 10 (a 138.9-kb region from *Sb10g030990* to *Sb10g030840*) (Table 2, Fig. 1D, 1E, 1F).

Table 3. Genetic analysis of the powdery mildew resistance gene *MIIW172*

Population	Size	A	H	B	χ^2	P	$\chi^2_{0.05}$
IW172	20	20					
Mo75	20			20			
Mo75/IW172	20		20				
F _{2:3}	115	26	55	34	1.33	0.5–0.75	5.99
F _{2:3}	4192	1046	2159	987	5.45	0.05–0.1	5.99

A, H, B represent homozygous resistant, heterozygous resistant and homozygous susceptible, respectively.
doi:10.1371/journal.pone.0100160.t003

To accurately characterize collinearity between the *MIIW172* region and the corresponding genomic regions of *Brachypodium*, rice and sorghum, the sequences of putative *Brachypodium* genes from *Bradi1g29630* to *Bradi1g29800* were used as queries to search for orthologous wheat ESTs (<http://wheat.pw.usda.gov/GG2/blast.shtml>). A total of 58 wheat ESTs were identified and used to design primers with the Conserved Primers 2.0 [49]. Out of 76 primer pairs screened, 5 EST-STS makers, *XRGA-C6*, *XRGA-B6*, *WGGC4653*, *WGGC4654*, and *WGGC4655* (Table 2) were found to be polymorphic between the parental lines IW172 and Mo75, as well as the resistant and susceptible bulks, and were subsequently used to construct a *MIIW172* high-density linkage map after genotyping the recombinants identified by BE637476 and *Xgwm344* in the mapping population. *XRGA-C6* and *XRGA-B6* were derived from wheat ESTs orthologous to *Bradi1g29670*. The *WGGC4653*, *WGGC4654*, and *WGGC4655* markers were derived from three wheat ESTs that were orthologous to *Bradi1g29760*, *Bradi1g29750*, and *Bradi1g29730* in *Brachypodium* (Table 1). The orders of these markers were highly conserved between wheat, *Brachypodium*, rice, and sorghum (Fig. 1E).

Marker enrichment using BAC libraries from cv. Langdon, Chinese Spring 7AL arm and *T. urartu* scaffolds

BAC libraries screening was employed to develop a physical map covering the *MIIW172* region and generate BAC sequences for marker development. However, BAC library from the IW172 wild emmer accession with the resistant trait is not yet available. We therefore screened BAC library of tetraploid wheat cv. Langdon with the *XRGA-C6* marker and detected two BACs 133N2 and 865A17 (Fig. 2), which are 115 and 151 kb, respectively. Alignments of 454 sequences of these two BACs indicated they shared a 30 kb overlapping region and hence form a sequence contig spanning about 236.3 kb (GenBank accession No. KJ782374; Fig. 2). We developed two intron-flanking EST-PCR markers [50] *WGGC4656* and *WGGC4657* and one SSR marker *WGGC4658* from the contig to construct a higher resolution map (Table 2, Fig. 2, Fig. 3), and found that *WGGC4657* was co-segregated with *WGGC4658*.

To provide additional markers for higher resolution map, sequences of *Bradi1g29680*, *Bradi1g29690*, *Bradi1g29700*, *Bradi1g29710*, and *Bradi1g29720* were used as queries to blast the *T. urartu* genome scaffolds [17]. *Bradi1g29680*, *Bradi1g29690*, and *Bradi1g29720* identified scaffold25403 (333kb), scaffold96474 (61kb), and scaffold5474 (44kb), respectively. Five SSR polymorphic markers *WGGC4659*, *WGGC4660*, *WGGC4661*, *WGGC4662*, and *WGGC4663* were developed from these scaffolds (Table 2, Fig. 2, Fig. 3). None of the scaffolds in the *T. urartu* genome matched *Bradi1g29700* and *Bradi1g29710*.

In addition, *WGGC4663* was used to screen the Chinese Spring 7AL-specific BAC library. The BAC Contig841 containing 12 BACs was identified and chosen for sequencing (Fig. 2; Keeble-Gagnere, manuscript in preparation). The 454 reads of 3 barcoded BAC pools were assembled into a contig spanning about 359.7 kb (GenBank accession No. KJ782373). Five additional polymorphic SSR markers *WGGC4664*, *WGGC4665*, *WGGC4666*, *WGGC4667*, and *WGGC4668* were developed from sequence contig841 and added to the high-resolution genetic map (Table 2, Fig. 2, Fig. 3). *WGGC4664*, *WGGC4665*, and *WGGC4668* were co-segregated, and 0.04 cM closer to *MIIW172* than *WGGC4663*. Moreover, *WGGC4667* and *WGGC4666* were 0.04 cM and 0.08 cM apart from *MIIW172* than *WGGC4663*, respectively (Fig. 2, Fig. 3). Therefore, the *MIIW172* was delineated to a 0.48 cM interval by *WGGC4664* (*WGGC4665*, *WGGC4668*) and *WGGC4659* (Fig. 2).

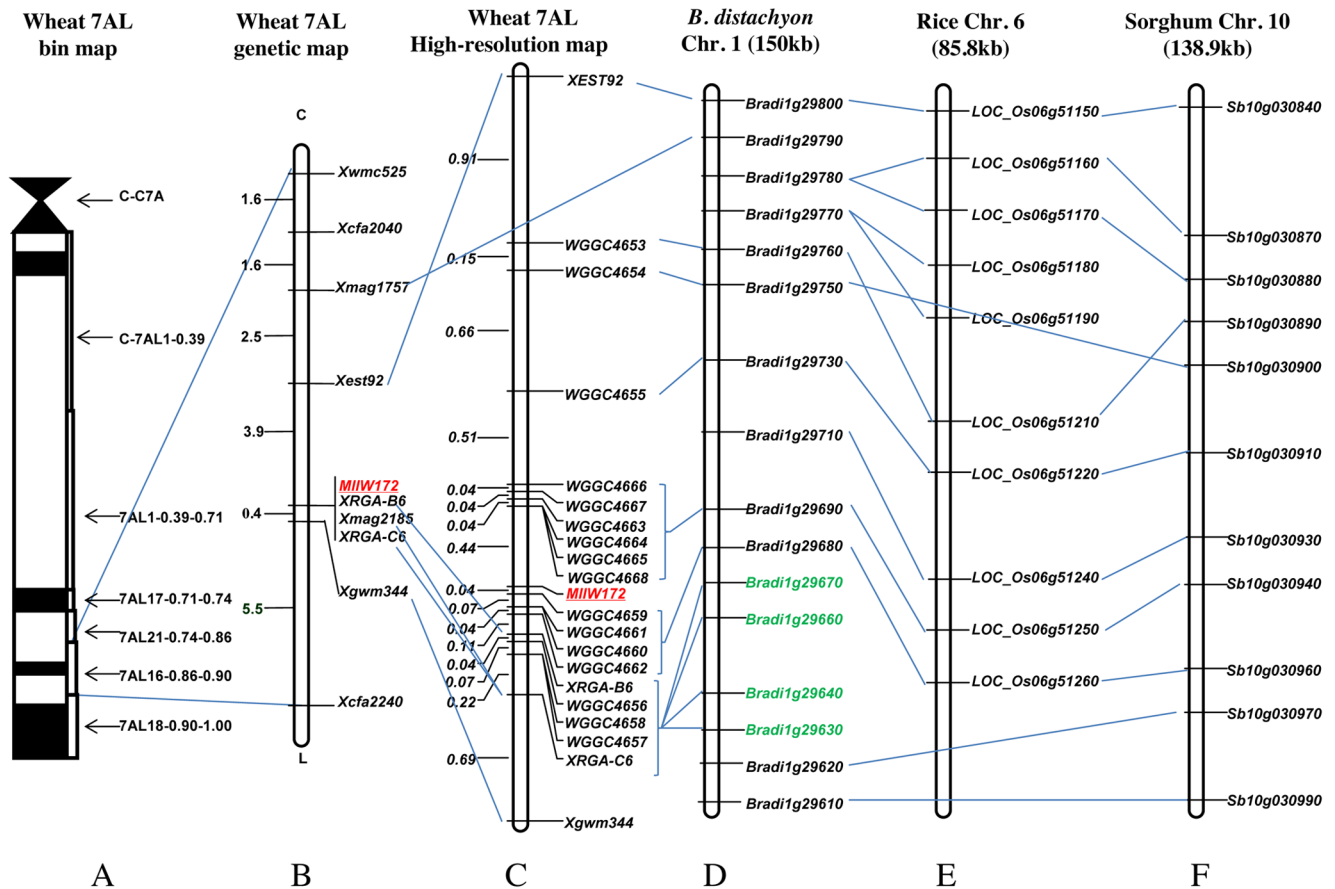


Figure 1. Genetic and comparative genomics linkage map of powdery mildew resistance gene *MIIW172* derived from wild emmer. A: *MIIW172* physical bin map. *MIIW172* was mapped to the distal bin 7AL16-0.86-0.90. **B:** Preliminary *MIIW172* genetic map on wheat chromosome arm 7AL with genetic distances in cM shown on the left, markers shown on the right. **C:** *MIIW172* high-resolution genetic map on wheat 7AL arm with genetic distances in cM shown on the left, EST-STS, EST-SSR and SSR markers shown on the right. Molecular markers that were previously assigned to the 7A wheat deletion bin map (A) are connected to the physical map with solid lines. The *MIIW172* locus is in red and underlined. The markers which served as anchors, establishing colinearity between the *MIIW172* genetic map and the sequences of *Brachypodium*, rice and sorghum, are connected to the *Brachypodium* gene with solid lines. **D:** The *MIIW172* orthologous genomic region on *Brachypodium* chromosome 1 (150kb) with orthologous genes shown on the right. The four genes in green represent the RGA cluster. **E:** The *MIIW172* orthologous genomic region on rice chromosome 6 (85.8kb) with orthologous genes shown on the right. **F:** The *MIIW172* orthologous genomic region on sorghum chromosome 10 (138.9kb) with orthologous genes shown on the right. doi:10.1371/journal.pone.0100160.g001

Discussion

Comparison of *MIIW172* with other *Pm* genes on 7AL

Our molecular marker analyses have revealed a dominant powdery mildew resistance locus, *MIIW172*, located on chromosome 7AL of *T. dicoccoides*. A number of powdery mildew resistance loci have been mapped to the same or nearby region. *Pm1* was the first reported powdery mildew resistance gene from common wheat cultivar Axminster and localized to 7AL arm [51], and subsequently, five *Pm1* alleles (*Pm1a-Pm1e*) have been described for the locus [3,36,46]. Genetic mapping analyses have shown that *Pm1* co-segregates with the *Xdo347* and *PSR680* RFLP markers [37], and is 0.3 cM proximal to the *Xgwm344* SSR marker [46]. *MIIW172* co-segregates with the *PSR680* derived STS marker *MAG2185* in the preliminary genetic linkage map (Fig. 1B) and maps to a region flanked by *Xwmc525* and *Xgwm344*. Different powdery mildew reactions were observed between the *MIIW172* and *Pm1a* and *Pm1c* alleles after inoculation with 15 Chinese *Bgt* isolates (Table S1). Since none of the identified *Pm1* alleles was

originated from wild emmer [3], the *MIIW172* is most likely a new allele of the *Pm1* locus.

Xwmc525 and *Xgwm344* are markers linked to several powdery mildew resistance genes located on chromosome arm 7AL. Based on their chromosome positions and genetic distances to the markers *Xwmc525* and *Xgwm344*, the powdery mildew resistance genes presently reported on 7AL can be classified into three groups (Fig. 4). The first group is proximal to *Xwmc525*, and includes *NCA4* and *NCA6* [52], *NCA6* [53], *PmTb7A.1* [54] and *Pm37* [55]. The second group is located in the *Xwmc525* - *Xgwm344* genetic interval. Members of this group include the *Pm1* [36,37], *Mlm2033* and *Mlm80* from *T. monococcum* [35], *PmTb7A.2* from *T. boeoticum* [54], *PmU* from *T. urartu* [56], *MLAG12* from *T. timopheevii* [57], as well as *MIIW72* [58], *HSM1* [10], and *MIIW172* (current study) from wild emmer. The *MIIW72* was identified from wild emmer IW72 collected in Kokhav Hashahar, Israel [58]. The IW72 (G-797-M) was a different collection from Israel. Although IW72 and IW72 were collected independently by different collectors, the possibility that the resistance genes *MIIW172* and *MIIW72* are identical cannot be excluded. The last group contains

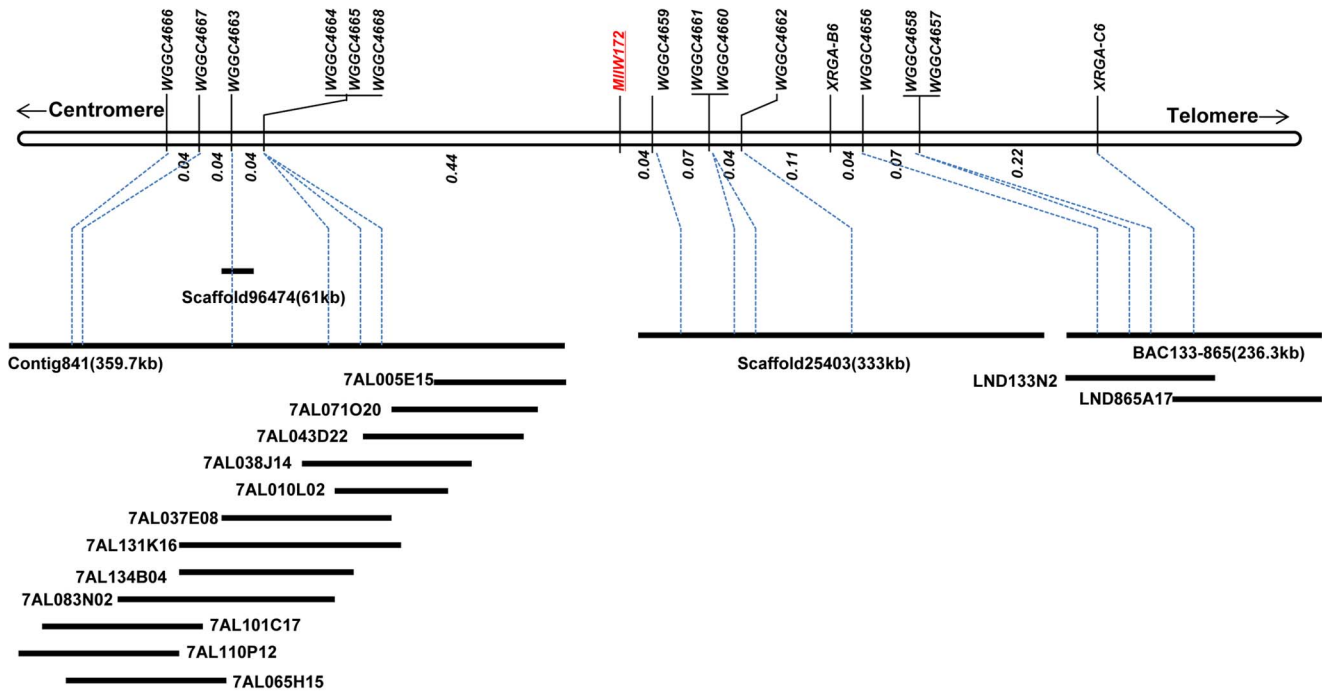


Figure 2. Physical map of the BAC contigs and scaffolds flanking the *MIIW172* locus anchored to the high-resolution genetic map. The approximate physical locations of all the newly designed markers are given on the BAC contigs or scaffolds. doi:10.1371/journal.pone.0100160.g002

PmG16 [6], and two recessive resistance genes *Pm9* [59] and *mIRD30* [60], which are located on the distal side of the *Xgum344* marker on 7AL. Clearly, the distal 7AL bin appears to be rich in powdery mildew resistance genes. However, considering the influences of different mapping populations on the marker distance in this region, it is unclear whether the genes within one group represent a series of different loci, or are alleles at a single locus. Phytopathology test and allelism analyses in future should be able to clarify the relationships of these genes. The map-based cloning of one or more of the genes could delineate the diversity and variation of the powdery mildew resistance genes/alleles in this genomic region.

Genetic and physical distance relationships in the *MIIW172* region

The majority of plant resistance genes (*R* genes) are members of large gene families. Understanding the evolution of *R* genes and the mechanisms underlying the evolution of novel *R* genes has become an important research field. Sequence rearrangement of *R* genes in multigene families through recombination can lead to the generation of novel *R* gene specificities. However, recombination in *R* gene regions can be complicated. Although most *R* genes are localized in high recombination regions [30], resistance loci with recombination suppression have been reported [37]. Suppressed recombination can cause co-segregation (complete genetic linkage) of multiple markers that may not be physically closely linked. The genetic and physical mapping in the 7AL distal region allowed us to examine the ratio of physical to genetic distance in the *MIIW172* region based on the analyses of the overlapping BAC sequences of A genomes from Chinese Spring, Langdon and *T. urartu* scaffolds (Fig. 4). Although our BAC contigs and sequence scaffolds were from different A genomes and did not completely cover the *MIIW172* region, we obtained a total of ~929 kb of sequences that were anchored to the genetic map (Fig. 2). These

sequences have greatly facilitated the development of molecular markers to increase the marker density in the *MIIW172* region and have allowed us to examine recombination within this region. With a genetic distance of 0.12 cM between the *WGGC4666* and *WGGC4668* markers (Fig. 1, Fig. 2), the ratio of physical to genetic distance on the proximal side of *MIIW172* was about 1.07Mb/cM; whereas in the distal region between *WGGC4662* and *WGGC4659*, a ratio of 855.9kb/cM was calculated. However, a higher ratio of recombination (182.7kb/cM) was detected from *WGGC4656* to *XRGA-C6*. Overall, an average of 529.8kb/cM was found in the *MIIW172* genomic region. Hossain et al. [47] showed that the highest density of EST (or gene) loci was observed in bin 7AL16-0.86-0.90, where approximate 1 EST (or gene) mapped for every 362 kb. The distal region of 7AL (bin 0.94–0.99, 4% of the 7AL arm) is a gene-rich region with high recombination spanning 21 Mb with approximately 442 kb/cM [61]. Therefore, recombination in the *MIIW172* genomic region is comparable to the EST mapping data on 7AL. We did not note a severe suppression of recombination at the *Lr20-Sr15-Pm1* resistance locus on chromosome arm 7AL in hexaploid wheat [37].

High collinearity of wheat and *Brachypodium* in the *MIIW172* genomic region

Comparative genomics analyses can be used to exploit the syntenic relationships among grass species for development of new markers linked to genes of interest by analyzing well-assembled genome sequence information available in model species [7,62]. Nevertheless, many studies have reported poor levels of micro-collinearity between wheat and rice because of inversions, deletions, duplications, and other rearrangements [6,7,48,63]. The isolation of the wheat disease resistance genes *Lr10*, *Lr21* and *Pm3* has also shown that wheat and rice have very limited collinearity in the relevant chromosomal regions. For example, the rice genome contains genes homologous to *Lr10* and *Pm3*, but at

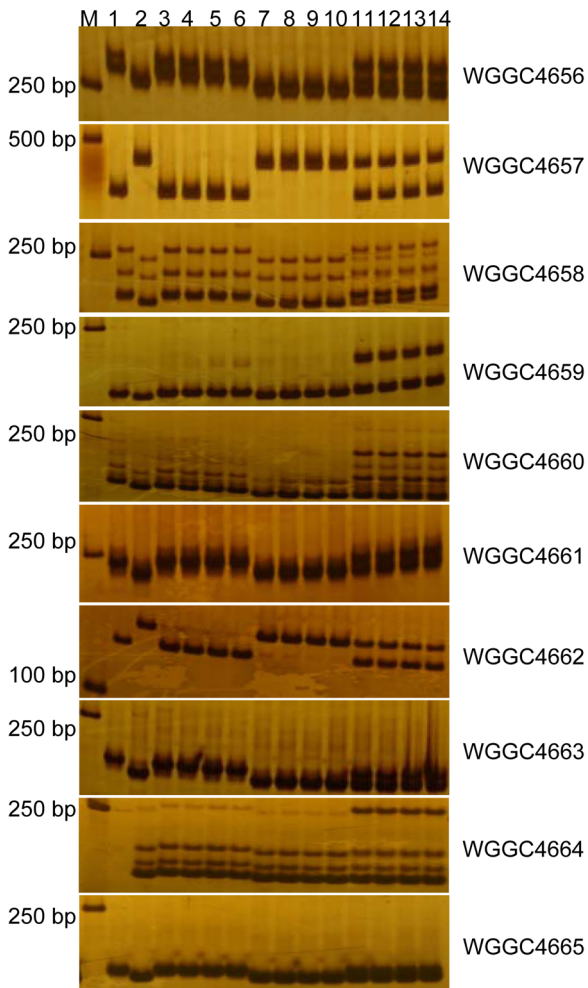


Figure 3. PCR amplification patterns of the markers *WGGC4656*, *WGGC4657*, *WGGC4658*, *WGGC4659*, *WGGC4660*, *WGGC4661*, *WGGC4662*, *WGGC4663*, *WGGC4664*, and *WGGC4665* in 8% non-denatured polyacrylamide gels. M: 2kb DNA marker. Lanes 1 and 2 are IW172 and Mo75, respectively, lanes 3–6 represent homozygous resistant plants, lanes 7–10 represent homozygous susceptible plants, and lanes 11–14 represent heterozygous resistant plants. doi:10.1371/journal.pone.0100160.g003

non-orthologous positions, indicating massive genomic rearrangements happened after the divergence of rice and wheat [64,65]. *Brachypodium* is expected to show better synteny with wheat than rice and sorghum because it diverged more recently from the lineage leading to wheat [27].

In this study, we identified the *MIIW172* orthologous regions from rice, *Brachypodium*, and sorghum using marker sequence information mapped to the wheat *MIIW172* region. The 992-kb sequences of overlapping BACs and *T. urartu* scaffolds were also used for comparative genomics analysis. In general, wheat, rice, sorghum, and *Brachypodium* have good colinearity. One major difference within the genomic region is the *Brachypodium* contains a cluster of putative NBS-LRR genes, *Bradi1g29630*, *Bradi1g29640*, *Bradi1g29660* and *Bradi1g29670* that correspond to, or are very near to, the disease resistance cluster region including the *Lr20-Sr15-Pm1* on 7AL. These resistance-like genes in the RGA cluster in *Brachypodium* share homology to RFLP probe *PSR680* and markers *XRGA-C6* and *XRGA-B6*, but are not present in the corresponding genomic regions in rice and sorghum. This

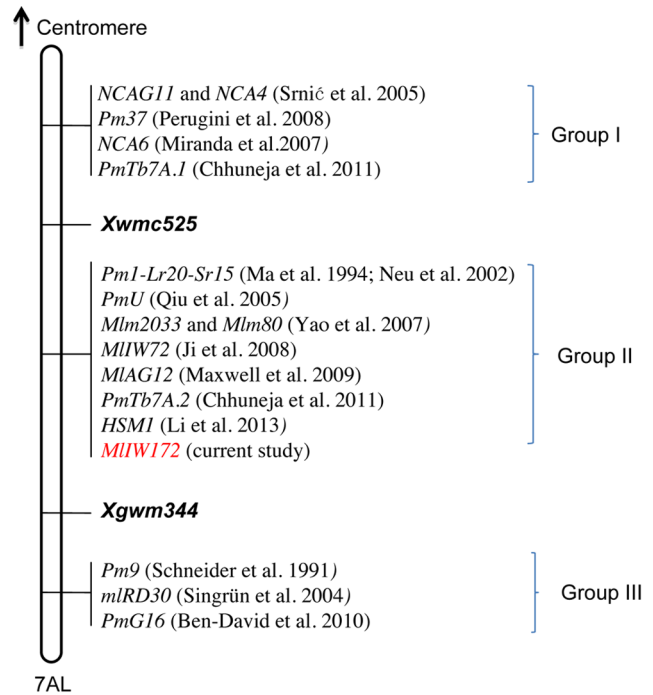


Figure 4. Integrative views of the *MIIW172* gene loci with other previously published *Pm* genes on chromosome arm 7AL. The loci can be classified into three groups (Group I; Group II; Group III) based on their order and genetic distance to markers *Xwmc525* and *Xgwm344*. doi:10.1371/journal.pone.0100160.g004

observation suggests that these resistance-like genes might exist in the ancestral poideae specie after its divergence from rice. The presence of RGA clusters in the *Brachypodium* and wheat orthologous region further supports the utility of *Brachypodium* genome for comparative mapping of *Triticeae* species, particularly in those rapidly evolving disease resistance loci.

MIIW172 is located in an RGA-rich genomic region

Most of the cloned disease resistance genes in wheat, such as *Pm3b* [65], *Sr33* [66], *Lr1* [67,68], *Lr10* [69], *Lr21* [70] belong to the nucleotide binding site leucine-rich repeats (NBS-LRR) *R* gene family. From the tetraploid wheat cv. Langdon BACs 133N2 and 865A17 sequences, we identified five NBS-LRR type RGAs. In the *T. urartu* scaffold25403, we predicted three successive RGAs from 124,590bp to 151,331bp that could constitute an additional RGA cluster. The large NBS-LRR gene family is often clustered within a resistance locus, so it is very difficult to isolate and clone genes eliciting a desired resistance function in the large polyploidy wheat genome without fine genetic map and good BAC-based physical map information.

In this study, we have delimited *MIIW172* to a 0.48 cM interval and linked to *WGGC4659* as closely as 0.04 cM. The *WGGC* markers identified in this study have allowed BAC pools from the developing Chinese Spring 7AL genome assembly to be located to the regions of the *MIIW172* locus and this represents a significant step toward positional cloning of *MIIW172*. Analysis of the Chinese Spring 7AL-BAC pool sequences has indicated a total of three BAC pools (ca 800 kb each) are present in the region immediately flanking the *MIIW172* locus, based on the presence of the *WGGC* sequences identified above. However, none of the identified BAC clones 133N2 and 865A17 (Langdon), the contig841 (Chinese Spring) and scaffold25403 (*T. urartu*) surround-

ing the region of *MIIW172* was from A genome of wild emmer. Recently, we have constructed a wild emmer BAC library with 10× coverage (Liu et al unpublished data) which could be used for chromosome walking to close the gap in the physical map using the new markers developed from the *MIIW172*-adjacent ends of contig841 and scaffold25403. Identification and sequencing of BAC clones spanning the uncovered region are the critical steps towards map based cloning of the *MIIW172* gene in wild emmer.

Supporting Information

Table S1 Phytopathology test of *MIIW172* and some known powdery mildew resistance genes to 15 Chinese *Bgt* isolates.
(XLS)

References

- Everts KL, Leath S, Finney PL (2001) Impact of powdery mildew and leaf rust on milling and baking quality of soft red winter wheat. *Plant Dis* 85: 423–429
- Mohler V, Bauer C, Schweizer G, Kempf H, Hartl L (2013) *Pm50*: a new powdery mildew resistance gene in common wheat derived from cultivated emmer. *J Appl Genet* 54: 259–263
- McIntosh RA, Yamazaki Y, Dubcovsky J, Rogers J, Morris C, et al. (2013) Catalogue of gene symbols for wheat. 12th International Wheat Genetics Symposium, Yokohama, Japan.
- Xiao M, Song F, Jiao J, Wang X, Xu H, et al. (2013) Identification of the gene *Pm47* on chromosome 7BS conferring resistance to powdery mildew in the Chinese wheat landrace Hongyanglazi. *Theor Appl Genet* 126: 1397–1403
- Nevo E, Korol AB, Beiles A, Fahima T (2002) Evolution of wild emmer and wheat improvement: population genetics, genetic resources, and genome organization of wheat's progenitor, *Triticum dicoccoides*. Springer, Berlin.
- Ben-David R, Xie W, Peleg Z, Saranga Y, Dinooor A, et al. (2010) Identification and mapping of *PmG16*, a powdery mildew resistance gene derived from wild emmer wheat. *Theor Appl Genet* 121: 499–510
- Liu ZJ, Zhu J, Cui Y, Liang Y, Wu H, et al. (2012) Identification and comparative mapping of a powdery mildew resistance gene derived from wild emmer (*Triticum turgidum* var. *dicoccoides*) on chromosome 2BS. *Theor Appl Genet* 124: 1041–1049
- Xie W, Ben-David R, Zeng B, Distelfeld A, Roder MS, et al. (2012) Identification and characterization of a novel powdery mildew resistance gene *PmG3M* derived from wild emmer wheat, *Triticum dicoccoides*. *Theor Appl Genet* 124: 911–922
- Xue F, Ji W, Wang C, Zhang H, Yang B (2012) High-density mapping and marker development for the powdery mildew resistance gene *PmASB46* derived from wild emmer wheat (*Triticum turgidum* var. *dicoccoides*). *Theor Appl Genet* 124: 1549–1560
- Li N, Wen Z, Wang J, Fu BS, Liu J, et al. (2013) Transfer and mapping of a gene conferring powdery mildew resistance at later growth stages in a tetraploid wheat accession. *Mol Breeding* (Online 10.1007/s11032-013-9983-0)
- QJ LL, Echaliier B, Chao S, Lazo GR, Butler GE, et al. (2004) A chromosome bin map of 16,000 expressed sequence tag loci and distribution of genes among the three genomes of polyploid wheat. *Genetics* 168: 701–712
- Goyal A, Bandopadhyay R, Sourdille P, Endo TR, Balyan HS, et al. (2005) Physical molecular maps of wheat chromosomes. *Funct Integr Genomic* 5: 260–263
- Gupta PK, Mir RR, Mohan A, Kumar J (2008) Wheat genomics: present status and future prospects. *International Journal of Plant Genetics* 2008: 896451
- Peng JH, Lapitan NL (2005) Characterization of EST-derived microsatellites in the wheat genome and development of cSSR markers. *Funct Integr Genomic* 5: 80–96
- Brenchley R, Spannagl M, Pfeifer M, Barker GL, D'Amore R, et al. (2012) Analysis of the bread wheat genome using whole-genome shotgun sequencing. *Nature* 491: 705–710
- Jia J, Zhao S, Kong X, Li Y, Zhao G, et al. (2013) *Aegilops tauschii* draft genome sequence reveals a gene repertoire for wheat adaptation. *Nature* 496: 91–95
- Ling HQ, Zhao S, Liu D, Wang J, Sun H, et al. (2013) Draft genome of the wheat A-genome progenitor *Triticum urartu*. *Nature* 496: 87–90
- Philippe R, Choulet F, Paux E, van Oeveren J, Tang J, et al. (2012) Whole genome profiling provides a robust framework for physical mapping and sequencing in the highly complex and repetitive wheat genome. *BMC Genomics* 13: 47
- Chantret N, Salse J, Sabot F, Bellec A, Laubin B, et al. (2008) Contrasted microcolinearity and gene evolution within a homoeologous region of wheat and barley species. *J Mol Evol* 66: 138–150
- Paterson AH, Bowers JE, Bruggmann R, Dubchak I, Grimwood J, et al. (2009a) The *Sorghum bicolor* genome and the diversification of grasses. *Nature* 457: 551–556
- Quraishi UM, Murat F, Abrouk M, Pont C, Confolent C, et al. (2011) Combined meta-genomics analyses unravel candidate genes for the grain dietary fiber content in bread wheat (*Triticum aestivum* L.). *Funct Integr Genomic* 11: 71–83
- Salse J, Bolot S, Throude M, Jouffe V, Piegue B, et al. (2008) Identification and characterization of shared duplications between rice and wheat provide new insight into grass genome evolution. *Plant Cell* 20: 11–24
- Abrouk M, Murat F, Pont C, Messing J, Jackson S, et al. (2010) Palaeogenomics of plants: synteny-based modelling of extinct ancestors. *Trends Plant Sci* 15: 479–487
- International Rice Genome Sequencing Project (2005) The map-based sequence of the rice genome. *Nature* 436: 793–800
- International Brachypodium Initiative (2010) Genome sequencing and analysis of the model grass *Brachypodium distachyon*. *Nature* 463: 763–768
- Dong L, Huo N, Wang Y, Deal K, Luo MC, et al. (2012) Exploring the diploid wheat ancestral A genome through sequence comparison at the high-molecular-weight glutenin locus region. *Mol Genet Genomics* 287: 855–866
- Huo N, Vogel JP, Lazo GR, You FM, Ma Y, et al. (2009) Structural characterization of *Brachypodium* genome and its syntenic relationship with rice and wheat. *Plant Mol Biol* 70: 47–61
- Wang J, Luo MC, Chen Z, You FM, Wei Y, et al. (2013) *Aegilops tauschii* single nucleotide polymorphisms shed light on the origins of wheat D-genome genetic diversity and pinpoint the geographic origin of hexaploid wheat. *New Phytol* 198: 925–937
- Akhunov ED, Sehgal S, Liang H, Wang S, Akhunova AR, et al. (2013) Comparative analysis of syntenic genes in grass genomes reveals accelerated rates of gene structure and coding sequence evolution in polyploid wheat. *Plant Physiol* 161: 252–265
- Luo MC, Gu YQ, You FM, Deal KR, Ma Y, et al. (2013) A 4-gigabase physical map unlocks the structure and evolution of the complex genome of *Aegilops tauschii*, the wheat D-genome progenitor. *Proc Natl Acad Sci USA* 110: 7940–7945
- Pont C, Murat F, Guizard S, Flores R, Foucrier S, et al. (2013) Wheat syntenome unveils new evidences of contrasted evolutionary plasticity between paleo- and neoduplicated subgenomes. *Plant J* 76: 1030–1044
- Xie CJ, Sun QX, Yang ZM (2003) Resistance of wild emmers from Israel to wheat rusts and powdery mildew at seedling stage. *J Triticeae Crops* 23: 39–42
- Allen GC, Flores-Vergara MA, Krasnyanski S, Kumar S, Thompson WF (2006) A modified protocol for rapid DNA isolation from plant tissues using cetyltrimethylammonium bromide. *Nat Protoc* 1: 2320–2325
- Michelmore RW, Paran I, Kesseli RV (1991) Identification of markers linked to disease-resistance genes by Bulked Segregant Analysis - a rapid method to detect markers in specific genomic regions by using segregating populations. *Proc Natl Acad Sci USA* 88: 9828–9832
- Yao G, Zhang J, Yang L, Xu H, Jiang Y, et al. (2007) Genetic mapping of two powdery mildew resistance genes in einkorn (*Triticum monococcum* L.) accessions. *Theor Appl Genet* 114: 351–358
- Ma ZQ, Sorrells ME, Tanksley SD (1994) RFLP markers linked to powdery mildew resistance genes *Pm1*, *Pm2*, *Pm3*, and *Pm4* in wheat. *Genome* 37: 871–875
- Neu C, Stein N, Keller B (2002) Genetic mapping of the *Lr20-Pm1* resistance locus reveals suppressed recombination on chromosome arm 7AL in hexaploid wheat. *Genome* 45: 737–744
- Lazo GR, Chao S, Hummel DD, Edwards H, Crossman CC, et al. (2004) Development of an expressed sequence tag (EST) resource for wheat (*Triticum aestivum* L.): EST generation, unigene analysis, probe selection and bioinformatics for a 16,000-locus bin-delineated map. *Genetics* 168: 585–593
- Ouyang S, Zhu W, Hamilton J, Lin H, Campbell M, et al. (2007) The TIGR Rice Genome Annotation Resource: improvements and new features. *Nucleic Acids Res* 35:D883–887

Acknowledgments

The authors are grateful to Andrew O. Jackson of University of California at Berkeley for editing the manuscript.

Author Contributions

Conceived and designed the experiments: ZL SO DZ JH YC ML YG. Performed the experiments: SO DZ JH XZ YC WS NH YL JX ZW QW YC PL DZ LW HS TY. Analyzed the data: SO DZ NH GKG HS YG ZL. Contributed reagents/materials/analysis tools: SO DZ JH YXC WS TY RA JD HQL ML QS. Wrote the paper: SO JH YG ZL.

40. Goodstein DM, Shu S, Howson R, Neupane R, Hayes RD, et al. (2012) Phytozome: a comparative platform for green plant genomics. *Nucleic Acids Res* 40: 1178–1186
41. Liu Q, Scaringe WA, Sommer SS (2000) Discrete mobility of single-stranded DNA in non-denaturing gel electrophoresis. *Nucleic Acids Research* 28: 940–943
42. Lander ES, Green P, Abrahamson J, Barlow A, Daly MJ, et al. (1987) MAPMAKER: an interactive computer package for constructing primary genetic linkage maps of experimental and natural populations. *Genomics* 1: 174–181
43. Liu RH, Meng JL (2003) MapDraw: a Microsoft Excel macro for drawing genetic linkage maps based on given genetic linkage data. *Hereditas (Beijing)* 25: 317–321
44. Cenci A, Chantret N, Kong X, Gu Y, Anderson OD, et al. (2003) Construction and characterization of a half million clone BAC library of durum wheat (*Triticum turgidum* ssp. *durum*). *Theor Appl Genet* 107: 931–939
45. Röder MS, Korzun V, Wendehake K, Plaschke J, Tixier MH, et al. (1998) A microsatellite map of wheat. *Genetics* 149: 2007–2023
46. Singrün CH, Hsam SLK, Hartl L, Zeller FJ, Mohler V (2003) Powdery mildew resistance gene *Pm22* in cultivar Virest is a member of the complex *Pm1* locus in common wheat (*Triticum aestivum* L. em Thell.). *Theor Appl Genet* 106: 1420–1424
47. Hossain KG, Kalavacharla V, Lazo GR, Hegstad J, Wentz MJ, et al. (2004) A chromosome bin map of 2148 expressed sequence tag loci of wheat homoeologous group 7. *Genetics* 168: 687–699
48. Zhang X, Han D, Zeng Q, Duan Y, Yuan F, et al. (2013) Fine mapping of wheat stripe rust resistance gene *Yr26* based on collinearity of wheat with *Brachypodium distachyon* and rice. *PLoS ONE* 8:e57885
49. You FM, Huo N, Gu YQ, Lazo GR, Dvorak J, et al. (2009) ConservedPrimers 2.0: a high-throughput pipeline for comparative genome referenced intron-flanking PCR primer design and its application in wheat SNP discovery. *BMC Bioinformatics* 10: 331
50. You FM, Huo N, Gu YQ, Luo MC, Ma Y, et al. (2008) BatchPrimer3: a high throughput web application for PCR and sequencing primer design. *BMC Bioinformatics* 9: 253
51. Sears ER, Briggie LW (1969) Mapping gene *Pm1* for resistance to *Erysiphe Graminis* f. sp. *tritici* on chromosome 7A of wheat. *Crop Sci* 9: 96–&
52. Srníc G, Murphy JP, Lyerly JH, Leath S, Marshall DS (2005) Inheritance and chromosomal assignment of powdery mildew resistance genes in two winter wheat germplasm lines. *Crop Sci* 45: 1578–1586
53. Miranda LM, Perugini L, Srníc G, Brown-Guedira G, Marshall D, et al. (2007) Genetic mapping of a *Triticum monococcum*-derived powdery mildew resistance gene in common wheat. *Crop Sci* 47: 2323–2329
54. Chhunjia P, Kumar K, Stirmweis D, Hurni S, Keller B, et al. (2012) Identification and mapping of two powdery mildew resistance genes in *Triticum boeoticum* L. *Theor Appl Genet* 124: 1051–1058
55. Perugini LD, Murphy JP, Marshall D, Brown-Guedira G (2008) *Pm37*, a new broadly effective powdery mildew resistance gene from *Triticum timopheevii*. *Theor Appl Genet* 116: 417–425
56. Qiu YC, Zhou RH, Kong XY, Zhang SS, Jia JZ (2005) Microsatellite mapping of a *Triticum urartu* Tum. derived powdery mildew resistance gene transferred to common wheat (*Triticum aestivum* L.). *Theor Appl Genet* 111: 1524–1531
57. Maxwell JJ, Lyerly JH, Cowger C, Marshall D, Brown-Guedira G, et al. (2009) *MLG12*: a *Triticum timopheevii*-derived powdery mildew resistance gene in common wheat on chromosome 7AL. *Theor Appl Genet* 119: 1489–1495
58. Ji XL, Xie CJ, Ni ZF, Yang TM, Nevo E, et al. (2008) Identification and genetic mapping of a powdery mildew resistance gene in wild emmer (*Triticum dicoccoides*) accession IW72 from Israel. *Euphytica* 159: 385–390
59. Schneider DM, Heun M, Fishbeck G (1991) Inheritance of the powdery mildew resistance gene *Pm9* in relation to *Pm1* and *Pm2* of wheat. *Plant Breeding* 107: 161–164
60. Singrün C, Hsam SL, Zeller FJ, Wenzel G, Mohler V (2004) Localization of a novel recessive powdery mildew resistance gene from common wheat line RD30 in the terminal region of chromosome 7AL. *Theor Appl Genet* 109: 210–214
61. Erayman M, Sandhu D, Sidhu D, Dilbirli M, Baenziger PS, et al. (2004) Demarcating the gene-rich regions of the wheat genome. *Nucleic Acids Res* 32: 3546–3565
62. Wu H, Qin J, Han J, Zhao X, Ouyang S, Liang Y, et al. (2013) Comparative high-resolution mapping of the wax inhibitors *Iw1* and *Iw2* in hexaploid wheat. *PLoS ONE* 8(12): e84691. doi:10.1371/journal.pone.0084691
63. Bossolini E, Wicker T, Knobel PA, Keller B (2007) Comparison of orthologous loci from small grass genomes *Brachypodium* and rice: implications for wheat genomics and grass genome annotation. *Plant J* 49: 704–717
64. Guyot R, Yahiaoui N, Feuillet C, Keller B (2004) In silico comparative analysis reveals a mosaic conservation of genes within a novel colinear region in wheat chromosome 1AS and rice chromosome 5S. *Funct Integr Genomics* 4: 47–58
65. Yahiaoui N, Srichumpa P, Dudler R, Keller B (2004) Genome analysis at different ploidy levels allows cloning of the powdery mildew resistance gene *Pm3b* from hexaploid wheat. *Plant J* 37: 528–538
66. Periyannan S, Moore J, Ayliffe M, Bansal U, Wang X, et al. (2013) The gene *Sr33*, an ortholog of barley *Mla* genes, encodes resistance to wheat stem rust race Ug99. *Science* 341: 786–788
67. Cloutier S, McCallum BD, Loutre C, Banks TW, Wicker T, et al. (2007) Leaf rust resistance gene *Lr1*, isolated from bread wheat (*Triticum aestivum* L.) is a member of the large *psr567* gene family. *Plant Mol Biol* 65: 93–106
68. Qiu JW, Schürch AC, Yahiaoui N, Dong LL, Fan HJ, et al. (2007) Physical mapping and identification of a candidate for the leaf rust resistance gene *Lr1* of wheat. *Theor Appl Genet* 115: 159–168
69. Feuillet C, Travella S, Stein N, Albar L, Nublát A, et al. (2003) Map-based isolation of the leaf rust disease resistance gene *Lr10* from the hexaploid wheat (*Triticum aestivum* L.) genome. *Proc Natl Acad Sci USA* 100: 15253–15258
70. Huang L, Brooks SA, Li W, Fellers JP, Trick HN, et al. (2003) Map-based cloning of leaf rust resistance gene *Lr21* from the large and polyploid genome of bread wheat. *Genetics* 164: 655–664.