

## Research Article

# Male-Female Interactions and the Evolution of Postmating Prezygotic Reproductive Isolation among Species of the *Virilis* Subgroup

Nada Sagga and Alberto Civetta

Department of Biology, University of Winnipeg, 515 Portage Avenue, Winnipeg, MB, Canada R3B 2E9

Correspondence should be addressed to Alberto Civetta, a.civetta@uwinnipeg.ca

Received 25 October 2010; Accepted 3 February 2011

Academic Editor: Jeremy Marshall

Copyright © 2011 N. Sagga and A. Civetta. This is an open access article distributed under the Creative Commons Attribution License, which permits unrestricted use, distribution, and reproduction in any medium, provided the original work is properly cited.

Reproductive isolation reduces breeding between species. Traditionally, prezygotic and postzygotic barriers to reproduction have been broadly studied, but in recent years, attention has been brought to the existence of barriers that act after copulation but before fertilization. Here, we show that when *D. virilis* females from different geographic locations mate with *D. novamexicana* males, egg laying is normal, but fertilization rates are severely reduced, despite normal rates of sperm transfer. This reduction in fertilization is probably due to lower retention of heterospecific sperm in female storage organs one-to-two days after copulation. An inspection of egg hatchability in crosses between females and males from other virilis subgroup species reveals that isolation due to poor egg hatchability likely evolved during the diversification of *D. virilis/D. lummei* from species of the novamexicana-americana clade. Interestingly, the number of eggs laid by *D. virilis* females in heterospecific crosses was not different from the numbers of eggs laid in conspecific crosses, suggesting that females exert some form of cryptic control over the heterospecific ejaculate and that future studies should focus on how female and female-sperm interactions contribute to the loss or active exclusion of heterospecific sperm from storage.

## 1. Introduction

Species can be reproductively isolated by a variety of mechanisms that as a whole reduce gene flow between them. These mechanisms can be broadly classified into prezygotic and postzygotic isolating barriers [1]. A large number of studies have drawn attention to isolating barriers in which gene flow is reduced after mating but prior to zygote formation [2–10]. While some of these barriers are competitive, others are a consequence of male-female incompatibilities and are noncompetitive, disrupting the sperm's capacity to reach and/or fertilize an egg. In *Drosophila*, noncompetitive isolating mechanisms have been well described. Sperm transfer from *D. arizonae* males to *D. mojavensis* females generates an insemination reaction in which a large mass forms in the uterus that obstructs ovulation and ultimately fertilization [9]. In crosses between *D. simulans* females and *D. sechellia* males, fewer sperm are transferred, and egg-laying and

hatchability are reduced [5]. Sperm are also depleted more quickly in crosses between *D. santomea* and *D. yakuba* [10].

The virilis subgroup consists of five species: *D. virilis*, *D. lummei*, *D. novamexicana*, *D. americana americana*, and *D. americana texana*. There is evidence for both pre-mating and postmating isolation among these five species. *Drosophila virilis* females have the highest crossability with all heterospecific males of the subgroup, whereas *D. virilis* males show the strongest courtship discrimination against all heterospecific females with the result that very low numbers of hybrids are produced [11]. A recent study has shown that when *D. novamexicana* females are exposed to *D. virilis* males for up to two weeks, only 14% of females produce progeny. Moreover, *D. virilis* males are able to recognize heterospecific females at the first stage of courtship (tapping), indicating strong pre-mating isolation [12]. For the reciprocal cross between *D. virilis* females and *D. novamexicana* males, there is evidence of strong postzygotic isolation with 7% hybrid

male fertility [13]. *Drosophila virilis* females mated with *D. lummei* males produce 95% fertile hybrid males, but 47% of the hybridizations die before becoming pupae, and 25% fail to emerge from their case [14]. When *D. virilis* females mate with *D. a. texana* males, one-third of the hybrid male progeny is sterile [13, 15].

The occurrence of postmating prezygotic isolation (PPI) barriers among species of the *virilis* subgroup has also been documented. For example, early studies showed that *D. virilis* females mated to heterospecific males produced very few offspring. These studies suggested, although qualitatively, that the low production of progeny was due to sperm immobility (mortality) in the seminal receptacle of the females' reproductive tract for crosses between *D. virilis* females and *D. a. americana* or *D. a. texana* males but not for crosses involving *D. novamexicana* males [17, page 489]. A recent study has shown a low rate of egg hatchability when *D. virilis* females are mated to *D. a. americana* males with most of the laid eggs not being fertilized [16].

*Drosophila virilis* females mated to *D. novamexicana* males have previously shown to hatch a low proportion of eggs after mating, but the reasons for such low egg hatchability remain unclear [17]. Here, we explore mechanisms of reproductive isolation between *D. virilis* females and heterospecific males by mainly, but not exclusively, focusing on crosses with *D. novamexicana* males. We first test strains of different geographic origin to confirm that prior reports of low hatchability for this cross are not strain dependant. Secondly, we use outbred populations to rule out the possibility that laboratory inbreeding might create or exacerbate some of the isolation phenotypes detected. Thirdly, we show that females hatch low proportion of eggs after a heterospecific cross but lay similar numbers of eggs in heterospecific and conspecific crosses. Fourthly, within the *virilis* subgroup, we show that the only cross for which isolation between species due to low hatching of eggs has not evolved is that between *D. virilis* females and *D. lummei* males. Finally, using outbred *D. virilis* females and outbred *D. novamexicana* males, we show that the low hatchability of eggs is not a consequence of embryo mortality but due to problems associated with female storage of heterospecific sperm.

## 2. Materials and Methods

**2.1. *Drosophila* Species and Maintenance.** Five geographically diverse strains of *D. virilis* (Argentina 15010-1051.49, California 15010-1051.00, Japan 15010-1051.09, Mexico 15010-1051.48, and Russia 15010-1051.52), two *D. novamexicana* strains (New Mexico 1301.08 and Utah 1301.08), a strain of *D. lummei* (Japan 1011.08), and a strain of *D. americana texana* (wild type 1041.16) were obtained from the San Diego *Drosophila* Stock Center. The number of eggs laid and the proportion of eggs hatched can be affected by inbreeding in laboratory strains of *Drosophila*, so we also established outbred populations of *D. virilis* and *D. novamexicana* by mixing equal numbers of individuals from the different strains in a population cage for five generations. Flies were

reared in round-bottom bottles (64 × 130 mm) containing standard cornmeal-yeast-agar-molasses (CYAM) medium. Bottles were kept in a 12:12 light-dark cycle and at 18°C–20°C. For stock maintenance, flies were allowed to freely mate and laid progeny in fresh media, the adults were discarded after 18 days, and a new generation of newly emerged adults were transferred to fresh media.

**2.2. Setting Up Crosses for Experimental Testing.** Crosses were performed between *D. virilis* females and *D. novamexicana* males as well as *D. lummei* and *D. a. texana* males. Reciprocal crosses among species were also tested with the exception, due to strong premating isolation [12], of crosses using *D. virilis* males. Conspecific crosses were used as controls. Bottles from each species stock were emptied and inspected daily for new adult emergences. Newly emerged flies were lightly anesthetized using CO<sub>2</sub> gas. Virgin females and males were separated by sex and placed in cylindrical vials (28.5 × 95 mm) containing CYAM medium. Males and females were aged for 10 days before use to ensure sexual maturity [18] and crosses were set up with one male and one female. Counts were obtained of eggs laid by females and the proportion of eggs hatched. For crosses between outbred *D. virilis* and *D. novamexicana*, we also estimated the proportion of fertilized eggs, and sperm fate was tracked within females.

**2.3. Egg Hatchability.** Each conspecific and heterospecific pair was placed in an egg-laying chamber made using a polystyrene Petri dish (60 × 15 mm) containing fresh CYAM medium attached to a 100 mL graduated polypropylene beaker. Every 24 hours, flies were slightly anesthetized using CO<sub>2</sub>, the Petri dish was removed, and a new dish with fresh CYAM medium was attached to the chamber. The replacement of dishes was continued for a total of five consecutive days. Eggs laid in each dish were daily counted, and 48 hours later hatched eggs were scored. Unhatched eggs can be recognized as a white compact shape, while hatched eggs appear as an empty outer chorion membrane due to larvae emergence.

**2.4. Fertilization of the Eggs.** Single male and female heterospecific and conspecific crosses, using *D. virilis* and *D. novamexicana* outbred strains, were set up in vials. Courtship behavior was observed until copulation occurred and for no longer than six hours. After copulation, females were transferred individually into egg-laying chambers. Females were transferred daily for five days to fresh egg-laying chambers, and the number of eggs laid was counted. 48 hours after eggs were laid, hatched eggs were scored. Unhatched eggs were collected from the media with a wooden handle dissecting pin and placed on a clean microscope slide. A drop of 1X PBS was added to the eggs. Eggs were manually dechorionated by removing the dorsal appendage and gently pressing at the posterior pole using minute pins (0.1 mm diameter). The inner vitelline membrane was removed by immersing the dechorionated eggs in a small tube containing a 1:1 solution of heptane and 90% methanol. The eggs

dropped to the layer between heptane and methanol and slowly descended to the bottom of the tube when their waxy layer was lost [19]. Eggs without vitelline membrane are almost transparent and easily damaged. Intact eggs were collected by pouring the heptane-methanol solution on a small piece of dark cloth. Within one minute, the solution evaporated and the eggs were visible on the cloth surface. A couple of drops of 1X PBS were added on the eggs using a glass Pasteur pipette. The eggs were then gently picked using an insect pin, placed on a clean microscope slide containing 300 nM DAPI (Molecular Probes, D3571) and incubated in a dark room for 30 minutes. After incubation, the eggs were examined under a Nikon Eclipse (E400) fluorescence microscope for evidence of nuclear division (fertilization).

**2.5. Tracking of Sperm.** A single male and female were set up as described in the previous section. At different intervals after mating (0, 24 and 48 hours), inseminated females were transferred into vials. The vials were flash frozen by submersion in liquid nitrogen. Females were then transferred to small tubes and stored in a freezer at  $-70^{\circ}\text{C}$ . Flies were placed in a drop of 1X PBS and each female reproductive tract was separated from the rest of the body. Sperm storage organs, uterus, pair of spermatheca, and seminal receptacle, were further separated, and each was placed on a fresh drop of 1X PBS on a single clean microscope slide. These slides were dried in an oven set to  $60^{\circ}\text{C}$  for 5 minutes, fixed in 3:1 methanol-glacial acetic acid for 5 minutes, and washed three times in 1X PBS [5]. Dissected tissues were stained using 300 nM of DAPI by incubating in a dark room for 30 minutes. Slides were examined under a Nikon Eclipse (E400) fluorescence microscope, and the presence of sperm was determined.

**2.6. Data Analysis.** The number of eggs, laid, the proportion of hatched eggs and the proportion of eggs fertilized were compared among different crosses using a one-way analysis of variance (ANOVA). When significant differences were found among crosses, a posteriori Tukey test was performed to test which cross averages were significantly different from one another. All statistical tests were conducted in SPSS (version 12.0). Comparisons of number of females with sperm in storage were done using a  $2 \times 3$  Chi-Square test.

### 3. Results

The average number of eggs laid by females mated to heterospecific males was not significantly different than the number laid by *D. virilis* females mated to conspecific males (Figure 1). Only crosses involving two *D. virilis* strains, Russia ( $F_{2,101} = 28.60$ ;  $P < .001$ ) and Japan ( $F_{2,91} = 22.23$ ;  $P < .001$ ), showed a significantly lower number of eggs laid than *D. novamexicana* females mated to conspecific males (Figure 1). In contrast, the proportion of eggs hatched from the heterospecific cross was consistently and significantly lower than the proportion of hatches from both of the conspecific crosses (Figure 2). Depending on the *D. virilis* strain used, the proportion of unhatched eggs varied between

0.84 and 0.96 (Figure 2). When using flies from the outbred populations, we found that the number of eggs laid was not different among crosses ( $F_{2,77} = 2.83$ ;  $P = .065$ ) (Figure 1) but that 0.94 of the eggs laid by *D. virilis* females mated with *D. novamexicana* males did not hatch (Figure 2).

Unhatched eggs could result from fertilized eggs that fail to develop or unfertilized eggs. We DAPI stained unhatched eggs to test for nuclear division. We counted the number of eggs hatched as fertilized and tested unhatched eggs laid from both conspecific and heterospecific crosses using the outbred populations. We found significant differences in the proportion of fertilized eggs ( $F_{2,68} = 173.42$ ;  $P < .001$ ) due to a significantly lower proportion of only five percent of eggs fertilized by *D. novamexicana* males that mated with *D. virilis* females (Tukey post hoc test:  $P < .001$ ) (Figure 3). These results indicate that the vast majority of unhatched eggs in heterospecific crosses between *D. virilis* females and *D. novamexicana* males are the result of some form of PPI.

PPI can result from problems in sperm transfer during copulation, problems with sperm storage, or the inability of sperm to fertilize heterospecific eggs. We used the *D. virilis* and *D. novamexicana* outbred populations to test whether sperm transfer and/or storage was affected in the heterospecific cross. We did this by observing copulations and dissecting females immediately after mating (0 hours) and at two intervals of 24 and 48 hours after mating. Immediately after mating, large numbers of sperm transferred to the females were found to be located in the uterus in both conspecific and heterospecific crosses. Because of the large numbers and the fact that the sperm head of *D. novamexicana* and *D. virilis* males is a needle-like structure that sometimes only faintly stains with DAPI, we tested differences between crosses by scoring numbers of females with or without sperm in storage. There were no significant differences in numbers of females with sperm in storage immediately after mating (0 hours), with all females having large amounts of sperm in their uterus. At 24 hours after mating, we observed a slight decline in numbers of females with sperm in storage for the heterospecific crosses. We only found significant differences between intra- and interspecific crosses for both the spermatheca and the seminal receptacle at 48 hours after mating, with a higher number of females mated to heterospecific males having no sperm in storage (spermatheca:  $\chi^2 = 11.31$ ,  $P = .004$ ; seminal receptacle:  $\chi^2 = 25.23$ ,  $P < .001$ ) (Figure 4). The most striking difference was that only 1 out of 21 *D. virilis* females mated with *D. novamexicana* males had few sperm cells in the seminal receptacle at 48 hours after mating. Overall, the heterospecific cross shows a different pattern of sperm storage within the female reproductive tract than the conspecific crosses (Figure 4).

Using males from other species of the virilis subgroup, we show that the number of eggs produced by *D. virilis* females is significantly higher than the number of eggs laid by *D. a. texana* ( $F_{2,48} = 10.77$ ;  $P < .001$ ) and *D. lummei* ( $F_{2,49} = 3.74$ ;  $P < .031$ ) (Figure 5(a)). Interestingly, the number of eggs laid by *D. virilis* females mated to heterospecific males is not significantly different than the number of eggs laid by *D. virilis* females mated with conspecific males

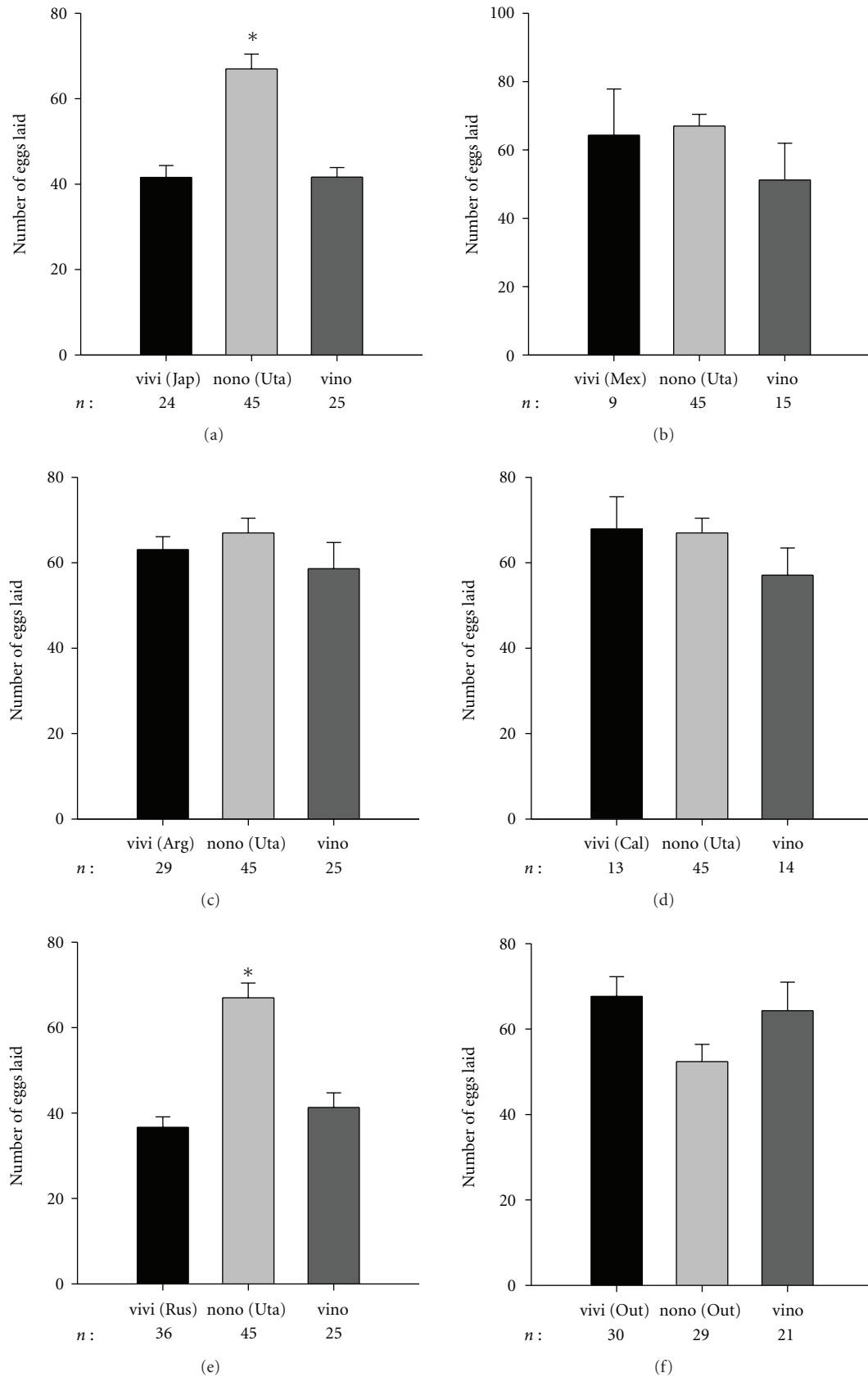


FIGURE 1: Average number of laid eggs and associated standard error.  $n$ : the number of females tested. A conspecific cross is denoted as vivi or nono, for *D. virilis* and *D. novamexicana*, respectively, with the origin of the strain used shown in between parenthesis. Results for the heterospecific cross are labeled as vino. Asterisks above columns are used to label statistically different averages.

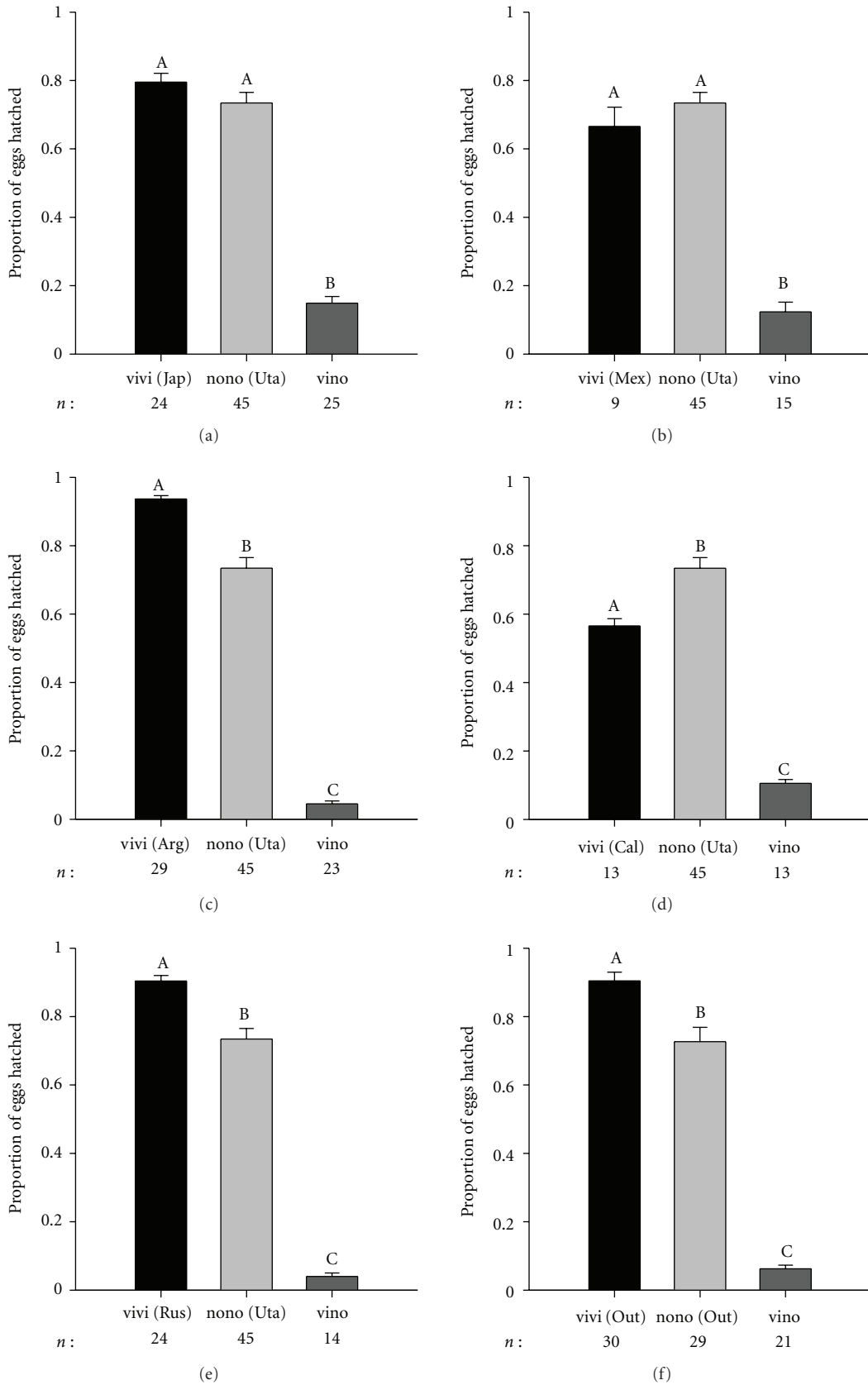
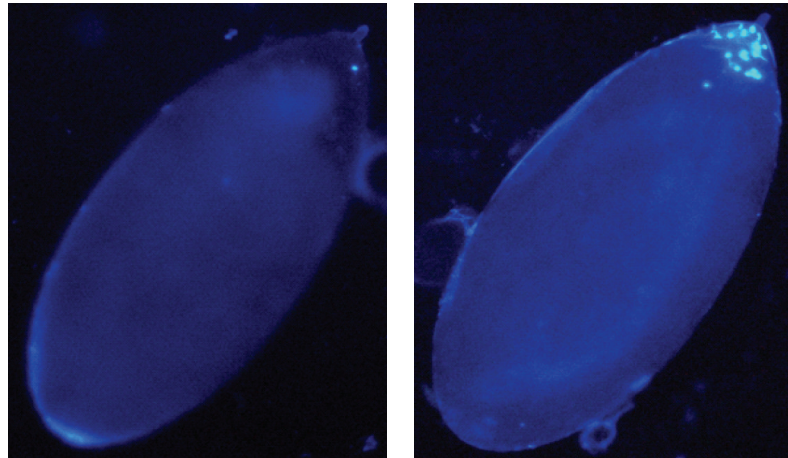
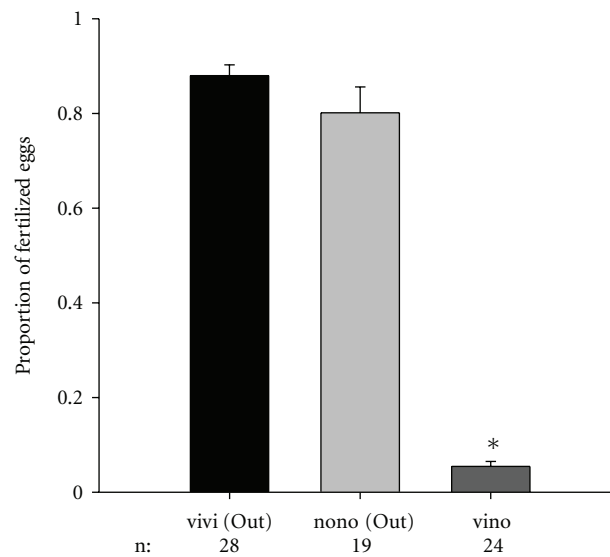


FIGURE 2: Average proportion of hatched eggs and associated standard error. Labels are as in Figure 1 except that shared letters above columns indicate that averages are not statistically different.





(a)



(b)

FIGURE 3: DAPI staining of eggs showing no nuclear division in an unhatched egg from a heterospecific cross (left panel) and a cluster of dividing nuclei at 2 hours after egg laying by a female mated to a conspecific male (a). Average proportion of fertilized eggs and associated standard error (b). Labels are as in Figure 1.

(Tukey post hoc test:  $P = 1.00$ ;  $P = .567$ ;  $P = .709$ ;  $P = .944$  for *D. virilis* Japan  $\times$  *D. novamexicana*, *D. virilis* Russia  $\times$  *D. novamexicana*, *D. virilis*  $\times$  *D. a. texana*, and *D. virilis*  $\times$  *D. lummei* resp.) (Figures 1 and 5(a)). However, egg hatchability is always lower in heterospecific crosses than both conspecific crosses, with the exception of *D. virilis* females  $\times$  *D. lummei* males (Figures 2 and 5(b)).

#### 4. Discussion

Studies of reproductive isolation between species of the virilis subgroup have shown extensive variation in the strength of the isolating barrier depending on the geographic origin of the strains tested (reviewed in [11]). Therefore, it is important to show that PPI between *D. virilis* females and *D. novamexicana* males is independent of the geographic origin

of the strains used and thus fixed rather than polymorphic. *Drosophila virilis* females of different geographic origin crossed with *D. novamexicana* males hatched between 4% and 16% of eggs, in line with a prior single strain assay that found only 15% of eggs hatched within two days after mating [17, see Table 103]. The uniformity of PPI among geographically distinct *D. virilis* strains suggests that PPI with *D. novamexicana* is a byproduct of divergent evolution rather than reinforcement though ecological differences between the two species may have reduced any possible interactions.

Contrary to what has been found among other species of *Drosophila* (e.g., [10]), *D. virilis* females mated to heterospecific males produce numbers of eggs that are not different from the numbers produced by *D. virilis* mated to conspecific males. Numerous studies have shown the influence of accessory gland proteins (ACPs) on female oviposition in

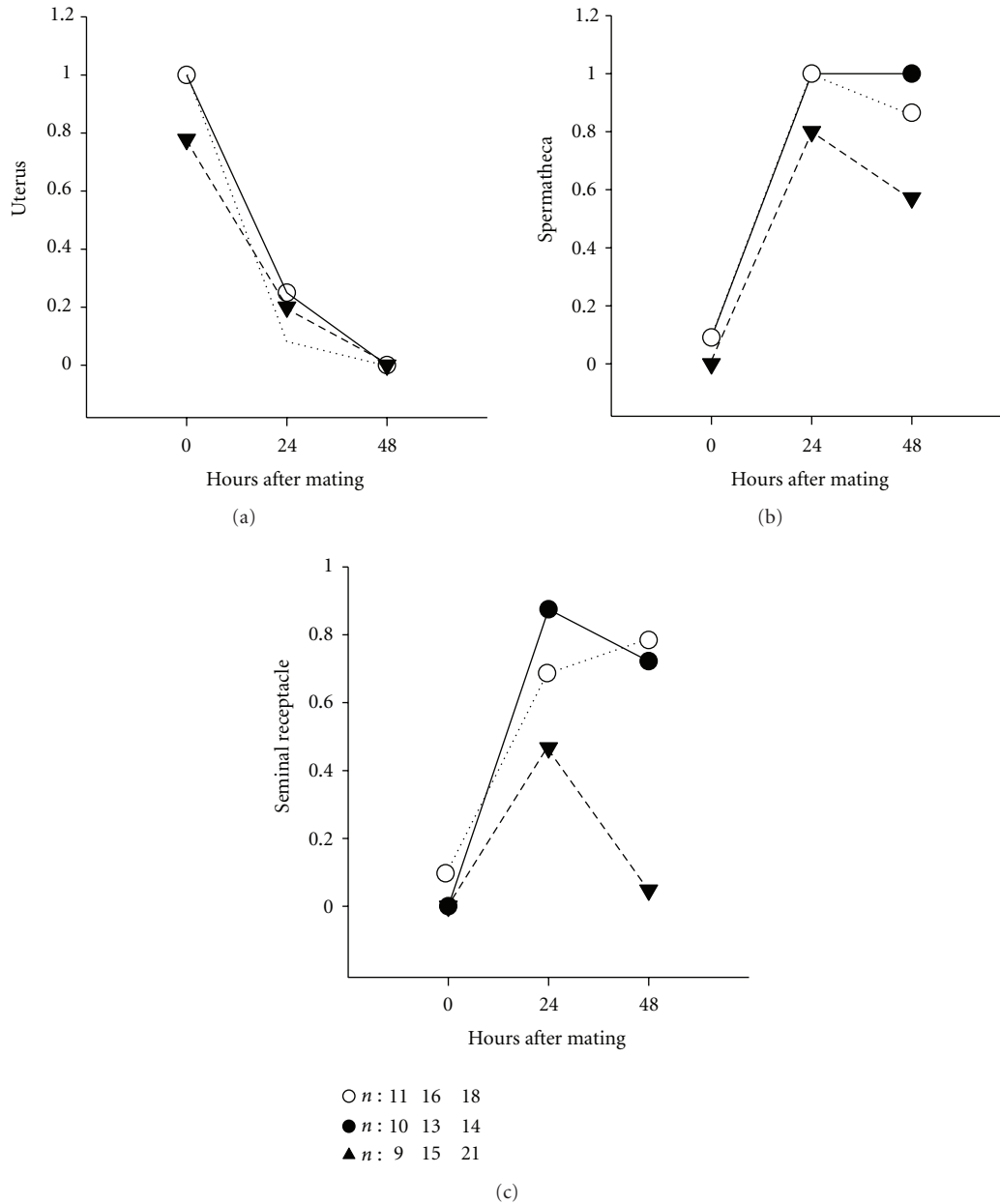


FIGURE 4: Proportion of females with sperm found in different storage organs immediately after mating (0 hours), at 24 hours and 48 hours after mating. White circles are *D. novamexicana* × *D. novamexicana*, black circles are *D. virilis* × *D. virilis*, and triangles are *D. virilis* × *D. novamexicana*.  $n$ : the number of females tested.

inseminated *D. melanogaster* females (reviewed in [20]). For example, both ovulin (ACP26Aa) and the sex peptide (ACP70A) have been implicated in stimulating egg production and ovulation after mating [21–24]. Males can influence female egg laying, but the egg-laying effect triggered by the ejaculate is also mediated by females' molecular counterparts (reviewed in [20]). Therefore, it is equally likely that either males of the virilis subgroup has not diverged enough in ACPs, and other ejaculate proteins content or that *D. virilis* females have retained the ability to recognize a wide variety of male-derived egg-laying stimulating signals from the ejaculate. The first possibility seems unlikely given the

fast rate of evolution of ACPs in *Drosophila*. ACPs are known to become neofunctionalized, lose their function or simply be lost even in comparisons among closely related species of *Drosophila* [25–27]. However, despite the fact that current genome information (<http://flybase.org/>) shows no orthologs of known *D. melanogaster* ACPs in *D. virilis*, we cannot fully rule out ACPs, as we have no knowledge of divergence among these proteins within the virilis subgroup. Our results demonstrate that in every heterospecific cross involving *D. virilis* females, egg laying is determined by the female of the species. This supports the hypothesis that *D. virilis* females have retained the molecular ability to recognize

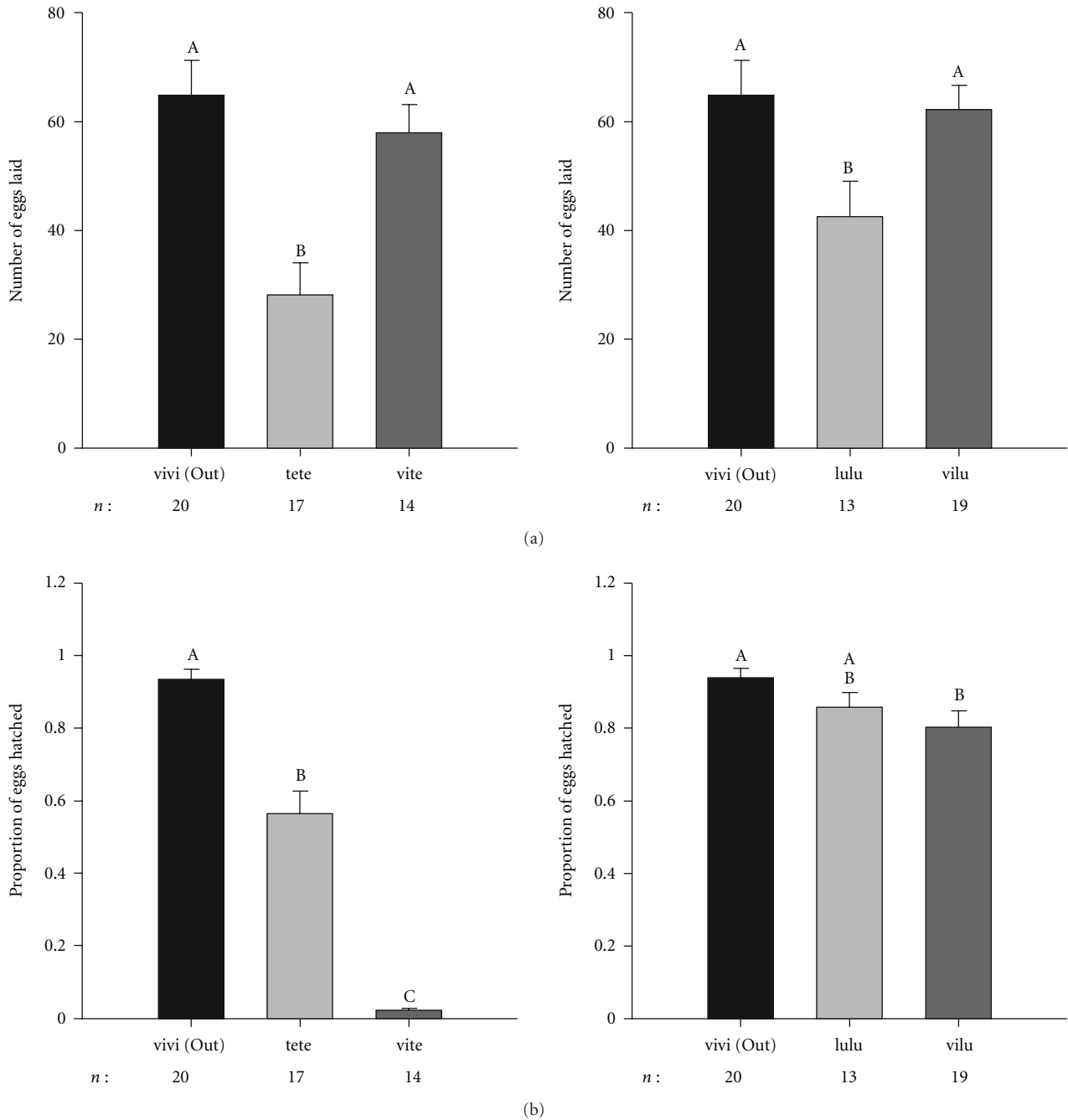


FIGURE 5: Average number of laid eggs and associated standard error for crosses involving *D. virilis* females and either *D. a. texana* (te) or *D. lummei* (lu) males (a). Average proportion of hatched eggs and associated standard error for crosses involving *D. virilis* females and either *D. a. texana* (te) or *D. lummei* (lu) males (b). Other labels are as in Figures 1 and 2.

a wide variety of egg-stimulating signals within the ejaculate. However, not all females within the species subgroup have retained this form of cryptic control. Preliminary data suggests that in crosses involving *D. lummei*, females respond by laying significantly higher number of eggs than in conspecific crosses (supplementary Figure 1S and supplementary Tables 1S and 2S in supplementary material available online at doi: 10.4061/2011/485460). This is a pattern more likely expected when males can overtake female resources to their advantage.

Overall, it appears that complex male-female interactions likely drive the evolution of egg laying phenotypes among species within the virilis subgroup.

Heterospecific crosses, with the exception of the cross between *D. virilis* females and *D. lummei* males, fail to fertilize enough eggs. Detailed studies done in *D. melanogaster* have characterized male ejaculate components that are known to influence the ability of sperm to properly store within female storage organs [28–33]. We also know that



female secretions from the spermathecae and parovaria are required by sperm to fertilize the eggs [34–36], but it is unclear whether they affect sperm viability, sperm retention, or release from female storage. Our data from crosses between *D. virilis* females and *D. novamexicana* males shows that sperm is normally transferred but rapidly lost and such depletion of sperm could contribute to low egg fertilization. We do not know whether females actively dump or simply lose sperm during egg laying. Given the time frame at which sperm are being lost, and based solely on data from studies using *D. melanogaster* [37, 38], it seems unlikely that sperm is ejected by females but rather lost during the egg-laying process.

The production of similar numbers of eggs by females mated to heterospecific males when compared to conspecific crosses, and the fact that most eggs fail to hatch is likely costly as it represents an energetic burden for females to lay a large number of unfertilized eggs. However, rapid loss of sperm from the female storage organs after mating might explain why there has not been strong selection against the high egg-laying phenotype. A female mating to a heterospecific male could actively dump or simply lose sperm from storage and become available and receptive to another mate. There is, in fact, evidence that *D. melanogaster* females with less sperm in storage are more likely to remate [39] and that female remating, in at least another *Drosophila* species, increases when a male is sperm depleted [40].

The PPI barrier among species within the subgroup is strong (Figures 2, 5 and 1S). Depending on the heterospecific cross performed, between approximately 75% and 98% of eggs failed to hatch. The cross between *D. virilis* females and *D. lummei* males was the only one for which we did not detect any form of PPI (see supplementary Table 2S). *Drosophila virilis* and *D. lummei* are the basal palearctic species to the subgroup, with chromosomal changes arisen during dispersal of the most recently derived species of *D. a. americana*, *D. a. texana*, and *D. novamexicana* (the novamexicana-americana clade) into North America [11]. Based on molecular data, *D. virilis* and *D. lummei* consistently appear as ancestral to species of the novamexicana-americana clade, with *D. virilis* being the oldest species followed by *D. lummei* [41, 42]. Moreover, estimated times of divergence show *D. virilis* arose about 6.5 Mya, closely followed by *D. lummei* (approximately 5.5 Mya) and a much later diversification of the novamexicana-americana clade around 1 Mya [41]. The available phylogenetic information therefore supports *D. virilis* and *D. lummei* as ancestral species and more closely related to each other than to the other three species in the subgroup. Our results support that PPI due to low egg hatchability most likely evolved during the diversification of the novamexicana-americana clade from the two basal species of the virilis subgroup. Interestingly, PPI also appears to be a strong form of isolation among species within the most recently derived clade (novamexicana-americana).

Finally, we know that *D. virilis* males show strong pre-mating isolation, but *D. virilis* females readily mate with heterospecifics [11, 12]. Coyne and Orr [43, 44] combined information on phylogenetic divergence and strength of

pre-mating and postzygotic isolation in the genus *Drosophila* to conclude that pre-mating isolating barriers evolve earlier than other forms of isolation between diverging populations. It is then puzzling why *D. virilis* females do not show strong pre-mating isolation with other species of the virilis subgroup. One possibility is that ordering isolating barriers by time of divergence (as in [43, 44]) is not fully informative of their actual contribution to isolation as one cannot assume total independence among isolation mechanisms. Pre-mating isolation might, therefore, not necessarily be the first barrier to hybridization. The other possibility might be that pre-mating behavioural isolation between males of the ancestral species (*D. virilis*) and derived female species resulted from the evolution of polymorphism in receptors of derived male species to detect both short ancestral (*D. virilis*) and long derived species female cuticular hydrocarbons [45]. If so, the monomorphic male receptors in *D. virilis* males might not be able to detect heterospecific females as suitable mates [12].

In summary, our results demonstrate that *D. virilis* females exert control over egg-laying rates after mating and that PPI due to problems with egg hatching evolved as a strong reproductive isolating barrier among some of the species of the virilis subgroup. Our data from crosses with *D. novamexicana* males and data from earlier studies using *D. a. americana* and *D. a. texana* males indicate that PPI is due to different problems faced by the heterospecific sperm in female storage. It is yet unclear to what extent interspecies divergence of proteins of the male ejaculate and/or female reproductive tract secretions might contribute to heterospecific sperm problems in the *D. virilis* female reproductive tract.

## Acknowledgments

The authors would like to thank Jens Franck and two anonymous referees for their comments and suggestions. This work was funded by an NSERC Discovery Grant to A. Civetta. N. Sagga was fully funded by a graduate scholarship from the Government of Saudi Arabia.

## References

- [1] J. A. Coyne and H. A. Orr, *Speciation*, Sinauer Associates, Sunderland, Mass, USA, 2004.
- [2] P. G. Gregory and D. J. Howard, "A post-insemination barrier to fertilization isolates two closely related ground crickets," *Evolution*, vol. 48, no. 3, pp. 705–710, 1994.
- [3] C. S. C. Price, "Conspecific sperm precedence in *Drosophila*," *Nature*, vol. 388, no. 6643, pp. 663–666, 1997.
- [4] D. J. Howard, P. G. Gregory, J. Chu, and M. L. Cain, "Conspecific sperm precedence is an effective barrier to hybridization between closely related species," *Evolution*, vol. 52, no. 2, pp. 511–516, 1998.
- [5] C. S. C. Price, C. H. Kim, C. J. Gronlund, and J. A. Coyne, "Cryptic reproductive isolation in the *Drosophila simulans* species complex," *Evolution*, vol. 55, no. 1, pp. 81–92, 2001.
- [6] L. W. Simmons, *Sperm Competition and Its Evolutionary Consequences in the Insects*, Princeton University Press, Princeton, NJ, USA, 2001.

- [7] N. Sellier, J. M. Brun, M. M. Richard, F. Batellier, V. Dupuy, and J. P. Brillard, "Comparison of fertility and embryo mortality following artificial insemination of common duck females (*Anas Platyrhynchos*) with semen from common or Muscovy (*Cairina Moschata*) drakes," *Theriogenology*, vol. 64, no. 2, pp. 429–439, 2005.
- [8] T. R. Birkhead and J. P. Brillard, "Reproductive isolation in birds: postcopulatory prezygotic barriers," *Trends in Ecology and Evolution*, vol. 22, no. 5, pp. 266–272, 2007.
- [9] E. S. Kelleher and T. A. Markow, "Reproductive tract interactions contribute to isolation in *Drosophila*," *Fly*, vol. 1, no. 1, pp. 33–37, 2007.
- [10] D. R. Matute and J. A. Coyne, "Intrinsic reproductive isolation between two sister species of *Drosophila*," *Evolution*, vol. 64, no. 4, pp. 903–920, 2010.
- [11] L. H. Throckmorton, "The virilis species group," in *The Genetics and Biology of Drosophila*, M. Ashburner, H. L. Carson, and J. N. Thompson Jr., Eds., vol. 3b, pp. 227–296, Academic Press, London, UK, 1982.
- [12] D. Nickel and A. Civetta, "An X chromosome effect responsible for asymmetric reproductive isolation between male *Drosophila virilis* and heterospecific females," *Genome*, vol. 52, no. 1, pp. 49–56, 2009.
- [13] H. A. Orr and J. A. Coyne, "The genetics of postzygotic isolation in the *Drosophila virilis* group," *Genetics*, vol. 121, no. 3, pp. 527–537, 1989.
- [14] J. Lumme and E. Heikkinen, "Viability of first and second generation hybrids of *Drosophila virilis* and *Drosophila lummei*," *Heredity*, vol. 65, pp. 435–447, 1990.
- [15] K. Lamnissou, M. Loukas, and E. Zouros, "Incompatibilities between Y chromosome and autosomes are responsible for male hybrid sterility in crosses between *Drosophila virilis* and *Drosophila texana*," *Heredity*, vol. 76, p. 6, 1996.
- [16] A. L. Sweigart, "The genetics of postmating, prezygotic reproductive isolation between *Drosophila virilis* and *D. americana*," *Genetics*, vol. 184, no. 2, pp. 401–410, 2010.
- [17] J. T. Patterson and W. S. Stone, *Evolution in the Genus Drosophila*, Macmillan and Co., New York, NY, USA, 1952.
- [18] T. A. Markow and P. M. O'Grady, "Drosophila biology in the genomic age," *Genetics*, vol. 177, no. 3, pp. 1269–1276, 2007.
- [19] R. M. Warn and A. Warn, "Microtubule arrays present during the syncytial and cellular blastoderm stages of the early *Drosophila embryo*," *Experimental Cell Research*, vol. 163, no. 1, pp. 201–210, 1986.
- [20] M. F. Wolfner, "Battle and ballet: molecular interactions between the sexes in drosophila," *Journal of Heredity*, vol. 100, no. 4, pp. 399–410, 2009.
- [21] M. Soller, M. Bownes, and E. Kubli, "Mating and sex peptide stimulate the accumulation of yolk in oocytes of *Drosophila melanogaster*," *European Journal of Biochemistry*, vol. 243, no. 3, pp. 732–738, 1997.
- [22] M. Soller, M. Bownes, and E. Kubli, "Control of oocyte maturation in sexually mature *Drosophila* females," *Developmental Biology*, vol. 208, no. 2, pp. 337–351, 1999.
- [23] S. A. Monsma and M. F. Wolfner, "Structure and expression of a *Drosophila* male accessory gland gene whose product resembles a peptide pheromone precursor," *Genes & Development*, vol. 2, no. 9, pp. 1063–1073, 1988.
- [24] Y. Heifetz, O. Lung, E. A. Frongillo, and M. F. Wolfner, "The *Drosophila* seminal fluid protein Acp26Aa stimulates release of oocytes by the ovary," *Current Biology*, vol. 10, no. 2, pp. 99–102, 2000.
- [25] D. J. Begun and H. A. Lindfors, "Rapid evolution of genomic Acp complement in the *melanogaster* subgroup of *Drosophila*," *Molecular Biology and Evolution*, vol. 22, no. 10, pp. 2010–2021, 2005.
- [26] D. J. Begun, H. A. Lindfors, M. E. Thompson, and A. K. Holloway, "Recently evolved genes identified from *Drosophila yakuba* and *D. erecta* accessory gland expressed sequence tags," *Genetics*, vol. 172, no. 3, pp. 1675–1681, 2006.
- [27] W. Haerty, S. Jagadeeshan, R. J. Kulathinal et al., "Evolution in the fast lane: rapidly evolving sex-related genes in *Drosophila*," *Genetics*, vol. 177, no. 3, pp. 1321–1335, 2007.
- [28] A. Wong, S. N. Albright, J. D. Giebel et al., "A role for Acp29AB, a predicted seminal fluid lectin, in female sperm storage in *Drosophila melanogaster*," *Genetics*, vol. 180, no. 2, pp. 921–931, 2008.
- [29] D. M. Neubaum and M. F. Wolfner, "Mated *Drosophila melanogaster* females require a seminal fluid protein, Acp36DE, to store sperm efficiently," *Genetics*, vol. 153, no. 2, pp. 845–857, 1999.
- [30] T. Chapman, D. M. Neubaum, M. F. Wolfner, and L. Partridge, "The role of male accessory gland protein Acp36DE in sperm competition in *Drosophila melanogaster*," *Proceedings of the Royal Society Biological Sciences*, vol. 267, no. 1448, pp. 1097–1105, 2000.
- [31] M. J. Bertram, D. M. Neubaum, and M. F. Wolfner, "Localization of the *Drosophila* male accessory gland protein Acp36DE in the mated female suggests a role in sperm storage," *Insect Biochemistry and Molecular Biology*, vol. 26, no. 8-9, pp. 971–980, 1996.
- [32] F. W. Avila and M. F. Wolfner, "Acp36DE is required for uterine conformational changes in mated *Drosophila* females," *Proceedings of the National Academy of Sciences of the United States of America*, vol. 106, no. 37, pp. 15796–15800, 2009.
- [33] J. L. Mueller, J. R. Linklater, K. R. Ram, T. Chapman, and M. F. Wolfner, "Targeted gene deletion and phenotypic analysis of the *Drosophila melanogaster* seminal fluid protease inhibitor Acp62F," *Genetics*, vol. 178, no. 3, pp. 1605–1614, 2008.
- [34] R. C. Anderson, "A study of the factors affecting fertility of lozenge females of *Drosophila melanogaster*," *Genetics*, vol. 30, pp. 280–296, 1945.
- [35] A. K. Allen and A. C. Spradling, "The Sfl-related nuclear hormone receptor Hr39 regulates *Drosophila* female reproductive tract development and function," *Development*, vol. 135, no. 2, pp. 311–321, 2008.
- [36] A. Prokupek, F. Hoffmann, S. I. Eyun, E. Moriyama, M. Zhou, and L. Harshman, "An evolutionary expressed sequence tag analysis of *drosophila* spermatheca genes," *Evolution*, vol. 62, no. 11, pp. 2936–2947, 2008.
- [37] R. R. Snook and D. J. Hosken, "Sperm death and dumping in *Drosophila*," *Nature*, vol. 428, no. 6986, pp. 939–941, 2004.
- [38] M. K. Manier, J. M. Belote, K. S. Berben, D. Novikov, W. T. Stuart, and S. Pitnick, "Resolving mechanisms of competitive fertilization success in *Drosophila melanogaster*," *Science*, vol. 328, no. 5976, pp. 354–357, 2010.
- [39] M. E. A. Newport and M. H. Gromko, "The effect of experimental design on female receptivity to remating and its impact on reproductive success in *Drosophila melanogaster*," *Evolution*, vol. 38, pp. 1261–1272, 1984.
- [40] N. Luck and D. Joly, "Sexual selection and mating advantages in the giant sperm species, *Drosophila bifurca*," *Journal of Insect Science*, vol. 5, p. 10, 2005.

- [41] G. S. Spicer and C. D. Bell, "Molecular phylogeny of the *Drosophila virilis* species group (Diptera: Drosophilidae) inferred from mitochondrial 12S and 16S ribosomal RNA genes," *Annals of the Entomological Society of America*, vol. 95, no. 2, pp. 156–161, 2002.
- [42] B. C. Caletka and B. F. McAllister, "A genealogical view of chromosomal evolution and species delimitation in the *Drosophila virilis* species subgroup," *Molecular Phylogenetics and Evolution*, vol. 33, no. 3, pp. 664–670, 2004.
- [43] J. A. Coyne and H. A. Orr, "Patterns of speciation," *Evolution*, vol. 43, pp. 362–381, 1989.
- [44] J. A. Coyne and H. A. Orr, "Patterns of speciation in *Drosophila*," *Evolution*, vol. 52, pp. 295–303, 1997.
- [45] R. J. Bartelt, M. T. Arnold, A. M. Schaner, and L. L. Jackson, "Comparative analysis of cuticular hydrocarbons in the *Drosophila virilis* species group," *Comparative Biochemistry and Physiology—Part B: Biochemistry and*, vol. 83, no. 4, pp. 731–742, 1986.





**Hindawi**

Submit your manuscripts at  
<http://www.hindawi.com>

