

DOCUMENT DE TREBALL

XREAP2013-05

Prevalence of alcohol-impaired drivers based on random breath tests in a roadside survey

Alcañiz, M. (RFA, XREAP)
Guillén, M. (RFA, XREAP)
Sánchez-Moscona, D. (RFA, XREAP)
Santolino, M. (RFA, XREAP)
Llatje, O.
Ramon, Ll.

Prevalence of alcohol-impaired drivers based on random breath tests in a roadside survey

Manuela Alcañiz[†], Montserrat Guillén[†], Daniel Sánchez-Moscona[†],
Miguel Santolino^{†*}, Oscar Llatje[‡], Lluís Ramon[‡]

[†] Department of Econometrics, Riskcenter-IREA, University of Barcelona, Spain

[‡] Catalan Traffic Authority, Spain

Abstract:

Sobriety checkpoints are not usually randomly located by traffic authorities. As such, information provided by non-random alcohol tests cannot be used to infer the characteristics of the general driving population. In this paper a case study is presented in which the prevalence of alcohol-impaired driving is estimated for the general population of drivers. A stratified probabilistic sample was designed to represent vehicles circulating in non-urban areas of Catalonia (Spain), a region characterized by its complex transportation network and dense traffic around the metropolis of Barcelona. Random breath alcohol concentration tests were performed during spring 2012 on 7,596 drivers. The estimated prevalence of alcohol-impaired drivers was 1.29%, which is roughly a third of the rate obtained in non-random tests. Higher rates were found on weekends (1.90% on Saturdays, 4.29% on Sundays) and especially at night. The rate is higher for men (1.45%) than for women (0.64%) and the percentage of positive outcomes shows an increasing pattern with age. In vehicles with two occupants, the proportion of alcohol-impaired drivers is estimated at 2.62%, but when the driver was alone the rate drops to 0.84%, which might reflect the socialization of drinking habits. The results are compared with outcomes in previous surveys, showing a decreasing trend in the prevalence of alcohol-impaired drivers over time.

Keywords

Breath alcohol concentration, blood alcohol content, drunk driving, sampling analysis, weights, substance abuse.

* Corresponding author: Miguel Santolino (E-mail: msantolino@ub.edu), Tf.: (+34) 934 020 484
Department of Econometrics, Riskcenter-IREA, University of Barcelona, Av. Diagonal, 690, E-08034
Barcelona, Spain.

1. Introduction and scope

Excessive alcohol consumption among drivers results in a significantly increased risk of motor vehicle accidents (WHO, 2011). Moreover, a large body of literature highlights the presence of alcohol and drugs in drivers that have been either severely or fatally injured in traffic accidents (Holmgren et al., 2005; Wagenaar et al., 1995; Ahlm et al., 2009). In response, road safety policies, in which the maximum level of alcohol permitted to drivers has become a key issue, have been devised aimed at reducing alcohol-related traffic accidents worldwide.

Ensuring that these alcohol limits are not exceeded is the responsibility of the police who can set up sobriety checkpoints to control the alcohol consumption of drivers. Such checkpoints are known to act as a deterrent on both the drinking behavior and drug use of drivers (Löbmann, 2002). The authorities are able to identify particularly dangerous locations (near centers selling alcohol, such as clubs and discotheques, for example) and high risk days and time frames, and intensify the number of sobriety checkpoints at such locations, and on such days and hours accordingly. In addition, alcohol tests can be administered when an individual is suspected of driving under the effects of alcohol, or following an accident in which people have been injured. Yet, although data on levels of alcohol concentration provided by non-random alcohol checkpoints or obtained from drivers involved in accidents with victims are a source of valuable information, they cannot be extrapolated to the general driving population as they are generated by a biased information collection process.

Here we present a case study in which the prevalence of alcohol-impaired drivers is estimated for the general population of drivers in Catalonia (Spain) in 2012. This research project was promoted by the Catalan Traffic Authority, which had previously carried out three similar studies in 2007, 2009, and 2010. Our case study comprises a roadside survey implemented during spring 2012 with the collaboration of the regional traffic agents who are responsible for traffic law enforcement, road security and the prevention of traffic accidents in Catalonia. The sample was designed to be representative of Catalonia's driving population, which involved implementing a complex statistical sampling procedure and an equally complex statistical inference process. However, the methodology reported should be of interest for similar studies of general driving populations.

A total of 7,596 breath alcohol tests were performed on randomly selected drivers, being representative of the population of vehicles circulating in non-urban areas. The standard alcohol breath testing procedure was followed to measure alcohol levels. The test estimates the alcohol blood concentration by measuring the amount of alcohol in the air exhaled by the driver. Drivers exceeding the legal limit of 0.25 milligrams of

alcohol in a liter of breath (0.25 mg/l) face administrative fines for traffic offenses¹. Drivers exceeding 0.60 mg/l of breath alcohol concentration (BrAC) face criminal prosecution.

The aim of this study is to estimate the prevalence of alcohol-impaired drivers in the general population circulating in non-urban areas of Catalonia. The main objectives of the analysis are:

- a) to provide an accurate estimate of alcohol concentration in a sample of drivers that is representative of the general population of drivers;
- b) to estimate the percentage of alcohol-impaired drivers by road type, day of the week, time of the day and other factors;
- c) to compare the estimated percentage of alcohol-impaired drivers in the general population with the estimated percentage of alcohol-impaired drivers according to non-random checkpoints, and
- d) to find evidence that the percentage of drivers with a BrAC level above the legal limit presents a decreasing trend when compared to the outcomes of surveys conducted in 2007, 2009, and 2010.

The article is organized as follows. A literature review is undertaken in the next section. In section 3 the methodology used in the design of the sample is explained. The results are reported in section 4 and our conclusions are summarized in section 5.

2. Literature review

Alcohol-impaired driving is the cause of a significant percentage of injuries and fatalities associated with road traffic accidents in most developed countries, where considerable efforts have been invested in seeking to understand the phenomenon and in designing and implementing adequate deterrence policies. As a result, the academic literature examining the issue is very extensive. However, most articles tend to concern themselves with one or more of the following issues: a) studying the driving impairment attributable to alcohol consumption and its interaction with other drugs; b) identifying the percentage number of motorists that drive under the influence of alcohol; c) estimating the percentage number of road traffic accidents associated with excessive (i.e., over the legal limit) alcohol consumption; d) identifying high-risk

¹ The general rate is 0.25 milligrams of alcohol in a liter of breath or, its equivalent, 0.5 grams of alcohol per liter of blood. However, the legal threshold is 0.15 mg/l for professional drivers of special vehicles such as ambulances, public transport vehicles, school buses or vehicles carrying hazardous substances. The latter limit also applies to drivers who have obtained their license less than two years prior to the date of the test.

groups; e) evaluating the effects of different deterrence policies; and f) methodological considerations.

It is widely accepted that alcohol consumption has a broad range of impairing effects on the skills required for driving. Specifically, it leads to a worsening of psychomotor skills, reaction times, the ability to keep a vehicle within traffic lanes, speed control and hazard perception, among others (Moskowitz and Fiorentino, 2000; Downey et al., 2013). Other legal and illegal psychoactive drugs have also been found to impair the ability to drive significantly (Woratanarat et al., 2009). Moreover, two or more psychoactive drugs combined can have a more than additive effect on the deterioration of driving skills (Downey et al., 2013).

As such, there is a broad consensus in the literature regarding the important quantitative effect of drink driving on accident fatalities. For instance, 45,000 casualties and 1,500 deaths can be related to drink driving in Germany each year (Löbmann, 2002). Similarly, according to official statistics for 2001, 8.4% of all injuries suffered in accidents and 10% of all fatal road traffic accidents in Belgium were alcohol-related (Vanlaar, 2005). Likewise, 25% of serious injuries produced in road traffic accidents were related to alcohol in the Netherlands (Mathijssen, 2005). On a more positive note though, most articles report a decreasing trend in the number of alcohol-related road traffic accidents (Peek-Asa, 1999; Vanlaar, 2005; Mathijssen, 2005; Williams, 2006; Vanlaar et al., 2012). For instance, while 57% of motor vehicle deaths were related to alcohol in the United States in 1982, this percentage had fallen to 40.9% in 1996 (Peek-Asa, 1999). More recently, a 2007 survey estimated that this figure had fallen to 33% (Bergen et al., 2011). This trend seems to be present in data for most developed countries, with significant falls in the number of alcohol-related accidents during the 1990s and 2000s.

Although the contribution of excessive alcohol consumption to the number of road traffic accidents is considerable, most studies note that the proportion of motorists who actually drive under the effects of alcohol is relatively small. For instance, 1.80% of U.S. adults reported episodes in which they have driven drunk (Bergen et al., 2011), while 3.31% of all drivers in Belgium were estimated in one study to have a blood alcohol content (BAC) level above the legal limit² (Vanlaar, 2005). However, the percentage of alcohol-impaired drivers on the roads seems to be significantly higher at nighttime and, even more so, on weekends. In this study, Vanlaar (2005) estimates that the percentage of alcohol-impaired drivers rises to 7.68% on weekend nights.

² Vanlaar (2005) notes that this figure might be negatively biased, given that not all accidents are recorded and the drivers involved in an accident are not always tested for alcohol. However, the magnitude of the bias is thought to be relatively small.

Yet, the percentage of alcohol-impaired drivers has also decreased steadily over time. For example, in the Netherlands, the share of drivers with a BAC above the legal limits fell from 15% in 1970 to 4.5% in 2000. Nevertheless, a surprisingly high proportion of alcohol-impaired drivers present a BAC above 1.3 g/l, which is almost three times higher than the legal limit in most developed countries, typically around 0.5 g/l (Mathijssen, 2005). This remains one of the challenges for future deterrence policy design.

Most studies report that a significantly high proportion of alcohol-impaired drivers are male. In the 2010 U.S. Behavioral Risk Factor Surveillance Survey, as many as 81% of the respondents that reported episodes of drunk-driving were men (Bergen et al., 2011). In the Netherlands, men aged 18-24 constitute a very high risk group, given that they represent less than 5% of the country's population but are responsible for almost 25% of accidents (Mathijssen, 2005). A study performed using data from the 2007 edition of the National Roadside Survey³ (NRS) in the U.S. reaches a similar conclusion (Kelley-Baker et al., 2013). In this case, individuals aged 21-24 were 4.5 times more likely to drink-drive than other age groups, while the percentage of positives was significantly higher for men than for women.

There is no conclusive evidence regarding differences in the rate of alcohol-impaired driving across different types of vehicle. For instance, Peek-Asa and Kraus (1996) note that motorcycle drivers exhibit the highest rate of alcohol use amongst all road users. Chongsuvivatwong et al. (1999) arrive at a similar conclusion for the case of Thailand. By contrast, Sun et al. (1998) report a mean BAC level for motorcyclists that is significantly lower than that for drivers of four-wheeled vehicles. They argue that this might be attributed to the fact that riding a motorcycle requires greater coordination and balance. In any case, all of these estimates should be considered with care due to the fact that they are often obtained from samples of individuals who suffered a traffic accident. Thus, they may be subject to a relatively large sample selection bias.

Surprisingly, a study performed among drivers in Brazil between 2005 and 2007 found that individuals who considered drunk driving as a serious social offense were more likely to incur in such behavior than their counterparts. Similarly, individuals who identified themselves as regular alcohol consumers were three times as likely to exceed the legal BAC limit (Campos et al., 2013). Moreover, it should be noted that drink driving seems to be associated with the non-usage of vehicle safety devices such as seat-belts or crash helmets in the case of motorcyclists (Bergen et al., 2011; Woratanarat et al., 2009). Despite this, Voas et al. (2013) found evidence of some precautionary behavior amongst youngsters when leaving a drinking location.

³ The methodology employed in the 2007 U.S. National Roadside Survey to estimate the prevalence of alcohol-impaired driving is explained in Lacey et al. (2011).

Specifically, 20% of the drivers presented a BAC level above the legal limit compared to 47% in the case of the passengers. Voas et al. (2013) point out that drivers with a high BAC level switched to passenger status and were replaced by former passengers with lower levels as a means to avoid alcohol-impaired driving.

Many policies have been implemented worldwide in order to reduce the prevalence of alcohol-impaired drivers. These include the introduction of BAC limits, the introduction of random breath testing, increased enforcement levels, the introduction of evidential breath testing, monetary and non-monetary penalties or publicity and educational programs. Of these, in the Netherlands the introduction of BrAC testing checkpoints combined with increased enforcement levels and educational programs seem to be the most effective policies (Mathijssen, 2005). Löbmann (2002) notes that the quality rather than the quantity of sobriety checkpoints serves as a better deterrent, suggesting that fewer yet more efficient checkpoints have a higher deterrence effect than operating a higher number of inefficient controls. On this note, Vanlaar (2005) suggests that alcohol-impaired drivers respond to a higher perceived probability of detection. This explains why drunk drivers tend to avoid high traffic count road sites and keep to roads with lower traffic intensity, where they estimate there is a lower probability of their being caught (Vanlaar, 2008). However, in the meta-analysis conducted by Wagenaar et al. (1995) the authors point out that the number of studies that identify the effects of deterrence policies is very limited due to a lack of data or the application of a poorly developed methodology.

We should stress that very few studies have been able to estimate the percentage of alcohol-impaired drivers in the driving population accurately. This might be due to the fact that in order to gather data for such a study, the cooperation and/or authorization of the corresponding traffic authorities is essential. However, police forces typically only perform strategic sobriety tests on drivers in particularly high-risk time-slots and locations. Thus, it is intrinsically difficult to gather information from a random representative sample. Of the literature reviewed, only the studies conducted by Vanlaar (2005) and Gjerde et al. (2008) are based on samples that are random in time and location to estimate the prevalence of alcohol-impaired drivers in Belgium and Norway, respectively⁴. These studies involved the participation of the traffic authorities who performed the alcohol tests on the drivers. This study follows a similar procedure based on the development of a statistical methodology for designing a random sample of the driving population.

⁴ The methodology used in the 2007 National Roadside Survey to calculate the proportion of alcohol-impaired drivers in the United States is random in time and location, although data were only collected on Fridays and Saturdays (Lacey et al., 2011).

3. Methodology

The study was performed in Catalonia (Spain), a Mediterranean region with a population that exceeded 7.5 million inhabitants in 2012. The population of interest comprises all drivers that circulate on the main interurban roads of Catalonia. Given that it is clearly infeasible to perform breath alcohol tests on the entire driving population, it is necessary to devise a mechanism to ensure that the sample of tested drivers is both random and representative. Breath alcohol testing checkpoints were randomly allocated and BrAC tests were performed on drivers at all the checkpoints, with the objective of obtaining an accurate estimate of the overall alcohol-impaired driving rate in Catalonia. The team of traffic agents that conducted the tests followed standard procedures, and no exceptions were permitted in the way the checkpoints and modus operandi were established. Only the personal information about each driver as shown on the driving license (that is, age, gender, nationality and the validity of the license) was collected. The number of occupants in the vehicle and the type of vehicle were also recorded, together with the result in mg/l of the BrAC test. When a result above the legal limit was obtained, a second confirmatory test was conducted, following standard procedures⁵. The time and location were recorded.

3.1. Territorial scope

For operational purposes, the traffic authorities divide Catalonia into eight Regional Traffic Areas (RTAs hereafter). Roads are classified in two groups, namely, high speed roads and conventional roads. Each road is divided in sections, where a section is defined as a fraction of a road that includes no major intersection. The length of these sections is not homogeneous throughout the territory. Some sections can be several kilometers long (the case of certain highways), whereas others (in certain country areas) might be quite short. Table 1 shows the number of sections and the percentage of sections that correspond to high speed roads (highways or motorways) and conventional roads.

⁵ A preliminary alcohol breath test is conducted in the driver's automobile using a portable breathalyzer. This test outcome has no legal validity. If a positive result above the legal limit is obtained, then the BrAC is tested in the traffic agent's automobile using an evidential breath testing device. When the specimen of breath gives a result above the legal limit, a second confirmatory breath test is performed after half an hour. The lower of these results is retained as evidence.

Table 1. Distribution of road sections within the Regional Traffic Areas of Catalonia, Spain (2012) by type of road

Regional Traffic Area (RTA)	Number of sections	High speed* (%)	Conventional (%)	TOTAL
<i>Girona</i>	1,241	17%	83%	100%
<i>Metropolitana Nord</i>	895	36%	64%	100%
<i>Metropolitana Sud</i>	571	32%	68%	100%
<i>Camp de Tarragona</i>	1,008	17%	83%	100%
<i>Terres de l'Ebre</i>	384	4%	96%	100%
<i>Ponent</i>	817	12%	88%	100%
<i>Central</i>	970	21%	79%	100%
<i>Pirineu Occidental</i>	351	0%	100%	100%
TOTAL	6,237	19%	81%	100%

* High-speed roads include highways and motorways. All other roads are referred to as being conventional.

The flow of vehicles on a road is not homogeneous during the day (Garber and Hoel, 2009; Roess et al., 2011), it being estimated that only around one per cent of daily vehicles use the road per hour in the time-frames of low vehicle flow (Cal and Cardenas, 1998; Pasaoglu et al., 2012). The information on average daily traffic (ADT) is gathered annually by the local traffic authority. Low-intensity roads were not included in the sample design so as to ensure a minimum number of vehicles during the time that the sobriety checkpoint was operational. According to the traffic authorities it takes an average of five minutes to conduct a breath test. Roads with an average intensity of traffic below 4,000 vehicles per day, i.e. 40 vehicles per hour in the time-frame of low flow, were not included in the sample. Although the literature suggests that there is a tendency in alcohol-impaired drivers to use such roads in order to avoid sobriety checkpoints (Vanlaar, 2008), the inclusion of low-intensity roads would have required an unrealistic number of testing teams. The number of road sections in Catalonia that present an average daily traffic intensity of more than 4,000 vehicles per day is 3,135.

3.2. Time scope

The sample was conducted in the spring of 2012. Alcohol-impaired driving in Catalonia may follow a seasonal pattern with impaired-driving patterns being motivated by seasonal variations in alcohol consumption in the population (Del Río et al., 2002). According to statistical series from the Catalan Traffic Authority, non-random alcohol tests performed in Catalonia in the period 2007-2012 show lower positive rates in winter than in summer. As spring is associated with intermediate rates it was chosen as the data collection period for random alcohol tests. Non-random BrAC tests

performed in autumn also show positive rates between the winter and summer bounds, and in general lower rates than in spring⁶.

The current sample is a cross-section based on the data gathered during a two-month period. Random breath alcohol testing controls were performed in three time intervals of: 16 – 26 April 2012, 3 – 24 May 2012, and 30 May – 11 June 2012. There were no bank holidays, other than ordinary Sundays, in these three periods and so there are no special features that might have influenced the usual flow and intensity of vehicles in the transport network or the driving pattern of the population. The sample design intentionally did not include days with atypical traffic flows (such as holidays), as they could potentially distort the results.

3.3. Sample selection

The sample seeks to be representative of all drivers that circulate on the main interurban roads of Catalonia. Given the nature of the study, a two-stage sampling procedure was carried out to gather the data. The first stage was designed to select the road sections and which therefore constitute our primary sample units (PSUs). The second stage was aimed at selecting the drivers to be tested, who constitute therefore our secondary sample units (SSUs).

The road sections selected (PSUs) serve as the basis for generating the spatial dimension, i.e. where the police BrAC testing checkpoints are located. These PSUs were selected using stratified sampling. The stratification variables were: geographical area (RTA), road type (high-speed or conventional), flow direction, day of week and time-slot (six four-hour intervals). The first stratification criterion was based on the geographical area and road type. The road sections were selected so as to provide a proportional representation of the RTAs and road types across the territory. The flow direction was chosen randomly with respect to the road kilometer counter, with half the PSUs being located in the rising direction (assumed to be the one in which cars moved in the same direction as the increase in road kilometers) and half in the decreasing direction.

Selecting road sections on which to locate the sobriety checkpoints was a further issue that had to be resolved in the sample design. A road section can be considered to constitute that part of the road lying between a given access and exit. In each stratum sections were selected based on a probability that was proportional to size (i.e., the length of the section). The selection mechanism ensured that the probability of a particular road section being chosen was proportional to its length in meters. Sampling

⁶ A second wave of random BrAC tests was launched in autumn, as indicated in the Annex.

was performed with replacement, meaning that any road section could be chosen more than once. However, we imposed a limit so that any one road section could not be selected more than three times. For each road section, safe areas for locating the sobriety checkpoint were recommended by the traffic agents. On high-speed roads, for security reasons, checkpoints had to be located at accesses or exits. However, on other types of road, the traffic agents were free to choose where to locate the checkpoint within each section.

Once the road sections and flow directions had been selected, they were equidistributed across days of the week and the time-slots for all the RTAs, with each road section being randomly matched to a day of the week and time-slot. The time schedules (day and hour) were chosen as homogeneously as possible with respect to drivers' alcohol consumption behavior so as to avoid any biases. The time-slots considered were⁷: 2:00 – 6:00 hrs, 6:00 – 10:00 hrs, 10:00 – 14:00 hrs, 14:00 – 18:00 hrs, 18:00 – 22:00 hrs and 22:00 – 2:00 hrs. The days of the week were also randomly allocated. Thus, the PSUs were designed to be representative of the road network in Catalonia and, moreover, of the road networks within each of the eight RTAs. This first stage constitutes a stratified non-proportional sample and as such weights are required to ensure the correct representation of the global network.

A list of the checkpoints selected was given to the authority police officer responsible for each RTA. Each designation included the road section, flow direction, day of week and time-slot for conducting the BrAC test. Any unexpected difficulty preventing the tests being performed as defined by this schedule required the authorization of the sample design group who provided a substitute location (as similar as possible to the original) at which the tests would be conducted on the previously established day of the week and within the same time interval⁸.

The second stage in the sample design involved the selection of the individual drivers to be tested. Once the checkpoint had been set up by the traffic agents at the place, day and time indicated, the drivers required to perform the BrAC tests were randomly chosen by the officers. In other words, drivers were chosen using a simple random sampling method as they approached the checkpoint. In fact, the traffic officers stopped the first vehicle to approach the sobriety roadblock once they were ready to perform the test. It should be borne in mind that the goal is to measure the rate of

⁷ Time-slots were designed to coincide with the working hours of the traffic agents.

⁸ Once the locations of all the sobriety checkpoints had been selected, an alternative location that could be used as a substitute was provided in case it was not possible to set up the checkpoint due to unforeseen circumstances, such as road works. Similarly, traffic officers were instructed to move to this alternative location if they were obliged to close their roadblock more than 30 minutes before schedule (for instance, agents had to attend an accident or other emergency situation). The alternative control points were identical to the original ones in terms of the stratification variables.

alcohol-impaired driving in Catalonia as accurately as possible. Here, checkpoints were not intentionally sited to fulfill preventive objectives, as is often the traffic authority's criterion. And, so, the vehicles were not selected on the basis of any observable characteristic or a priori suspicion of the probability of detecting a positive outcome. The random-selection feature makes the dataset a very powerful tool for making precise estimations of the alcohol-impaired driving rate.

3.4. Weight estimates

Given that we opted to restrict the sample to roads with a medium-high ADT, an immediate consequence of imposing this restriction is that conventional roads are underrepresented. This is one of the reasons why our statistical analysis requires sample weights and the assumption that excluding conventional road sections with low intensity does not bias the results. Specifically, we used the estimated ADT for each road section as a criterion for constructing the weight of each observation. However, we only had access to one measure of traffic intensity on each road section, which did not allow us to take into account in the construction of the weights the fluctuations in traffic intensity over different time-slots and days of the week.

Each observation was assigned a weight. Weights were computed according to the following methodology. Let us assume the following notation. Superscript v is used to denote the type of road (High speed road $v=1$ versus Conventional road $v=0$). Subscript h is used to denote an administrative zone or stratum (RTA). There are eight zones so $h=1,2,\dots,8$. We denote by N_h^v the number of road sections in zone h of type v . We sample a fraction of these roads. The number of sections in the sample is denoted by n_h^v .

For every road section we have two magnitudes that characterize the section: its length in kilometers and the intensity of traffic measured as the estimated number of vehicles per day that use the section. We denote the section length by l_{ih}^v for the i -th section of road type v in zone h , $i=1,\dots,N_h^v$. We denote the section intensity of traffic by d_{ih}^v for the i -th section of road type v in zone h , $i=1,\dots,N_h^v$. A section is relatively more important for us than another section if its traffic intensity is higher or its length is greater. So, we compute relative length and relative intensity as, $\frac{l_{ih}^v}{\sum_{j=1}^{N_h^v} l_{jh}^v}$ and

$\frac{d_{ih}^v}{\sum_{j=1}^{N_h^v} d_{jh}^v}$, respectively.

Once n_h^v sections are sampled proportional to length in each zone and type of road, we need to calculate the total traffic intensity that is represented by these sections. Therefore we compute $\sum_{j=1}^{N_h^v} d_{jh}^v$, which is the sum of intensities in the population in zone h type v , and compare to $\sum_{j=1}^{n_h^v} d_{jh}^v$, which is the sum of intensities in the sampled subgroup of road sections. The ratio between these two is the relative sampled intensity and we can denote this by r_h^v . We have k breath alcohol tests in section i , and denote by t_{ih}^v the duration of the sobriety roadblock in this section, while m_{ih}^v denotes the total number of BrAC tests performed during the roadblock.

So, the (non-scaled) weight for every test $k=1, \dots, m_{ih}^v$ is called w_{kih}^v , $i=1, \dots, n_h^v$, $w_{kih}^v = d_{ih}^v r_h^v t_{ih}^v (m_{ih}^v)^{-1} h_{mih}^v s_h^v$, where h_{mih}^v depends on the time interval attending to the heterogeneous distribution of traffic throughout the day. The factor h_{mih}^v seeks to capture the differences in the flow of vehicles from one time interval to another. The reason we include this factor is because we know that traffic intensity diminishes substantially during the night. Taking into account what we know about car trip distribution by time of the day in Europe (Pasaoglu et al., 2012), we approximate h_{mih}^v to 0.12 if the alcohol tests are performed between 22:00 and 2:00 hrs, to 0.08 if tests are performed between 2:00 and 6:00 hrs, and to 0.20 for each one of the remaining four-hour periods between 6:00 and 22:00 hrs. These time-frames divide the day into time-slots within which the flow of vehicles is nearly homogeneous. Factor s_h^v represents the size of type of road v in zone h relative to the other zones. Note that the geographical extension of zones and their location with respect to the metropolitan area is very diverse. So we have calculated a relative size of a zone as

$$s_h^v = \left(\frac{\sum_{j=1}^{N_h^v} d_{jh}^v}{N_h^v} \right) \sum_{j=1}^{N_h^v} l_{jh}^v .$$

Finally, weights are proportionally scaled so that the sum

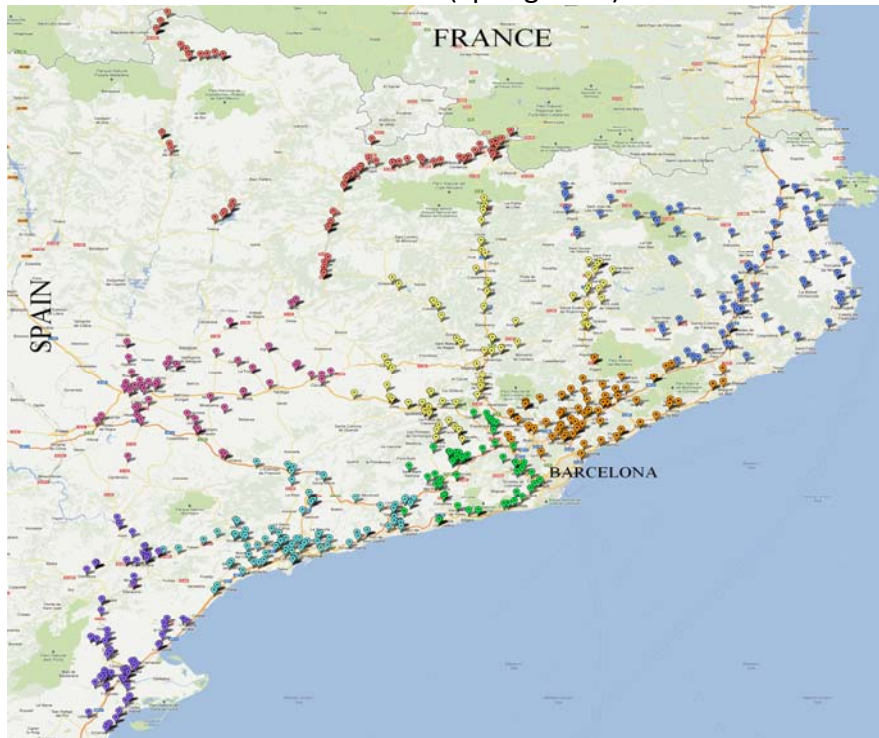
of weights is equal to the total number of BrAC tests performed. The weights associated with each RTA range from an average of 0.0315 in a low traffic density RTA to 0.2683 in the immediate outskirts of the urban area of Barcelona.

3.5. Sample size and estimated sampling error

This study forms part of a research program promoted by the Catalan Traffic Authority. In this case, a total of 720 hours of BrAC testing was conducted across Catalonia, corresponding to the total resources allocated by the traffic authority to the study. Our target was to obtain 90 hours of test results for each RTA. The traffic authorities in

each RTA were allowed to conduct the operation in one of two ways: either 60 checkpoints of 90 minutes duration each or 90 checkpoints of 60 minutes duration each. Most of the RTA authorities opted for the second option, with the exception of the RTAs of Metropolitana Sud and Ponent. Thus, checkpoints were sited at a total of 660 different locations (Figure 1).

Figure 1. Distribution of breath alcohol testing checkpoints in Catalonia by Regional Traffic Areas (Spring 2012)



Note: Girona RTA (dark blue tick); Metropolitana Nord RTA (orange tick); Metropolitana Sud RTA (green tick); Camp de Tarragona RTA (light blue tick); Terres de l'Ebre RTA (lilac tick); Ponent RTA (pink tick); Central RTA (yellow tick); Pirineu Occidental RTA (red tick).

Error margins can be constructed based on statistical sampling analysis (Kish, 1995; Levy, 1991). If we consider that previous studies carried out in Catalonia by the Catalan Traffic Authority seldom showed an alcohol-impaired driving rate greater than 2% (Annex), we can conclude that the estimation for Catalonia as a whole has a maximum error margin of $\pm 0.3\%$, whilst the estimations for the RTAs have an error of $\pm 1.0\%$ at most. Both estimated sampling errors are calculated at the 95% confidence level and we assume a similar number of tests was performed in the previous study conducted in 2010 (in which a total of 7,351 tests were made). Under these assumptions it can be asserted that the sample is statistically representative of Catalonia's driving population.

4. Results

The number and the duration of sobriety checkpoints per RTA (recall low-intensity roads were excluded) was large enough to obtain a final sample size of 7,596 BrAC rate tests, distributed across the eight RTAs of Catalonia. Due to the sample design, each test observation has an associated weight according to the representativeness criteria described in section 3. All the results reported in this section therefore take the sample design into consideration by means of associated weights, since failure to do so would introduce biased outcomes. The estimated percentage values of positive outcomes from random BrAC tests per RTA are shown in Table 2. The percentage of positive outcomes for the whole driving population of Catalonia was 1.29%. This result is compared with the percentage of positive outcomes obtained from non-random BrAC tests, i.e. when tests were performed in sobriety checkpoints strategically located with the aim of preventing road accidents⁹. The rate of positive outcomes from non-random BrAC tests in spring 2012 was 4.38%. As expected, the percentage of BrAC level outcomes above the legal limit is much lower when the tests were conducted at randomly located sobriety checkpoints.

Table 2. Rates of positive outcomes per RTA from random BrAC tests (Spring 2012)*

Regional Traffic Area (RTA)	Positive rate	Confidence interval (95%)
<i>Girona</i>	2.49%	(1.52%; 3.46%)
<i>Metropolitana Nord</i>	1.39%	(0.65%; 2.13%)
<i>Metropolitana Sud</i>	0.94%	(0.31%; 1.57%)
<i>Camp de Tarragona</i>	1.46%	(0.75%; 2.17%)
<i>Terres de l'Ebre</i>	0.34%	(0.00%; 0.70%)
<i>Ponent</i>	1.31%	(0.50%; 2.13%)
<i>Central</i>	0.26%	(0.00%; 0.60%)
<i>Pirineu Occidental</i>	1.09%	(0.46%; 1.73%)
Total	1.29%	(1.04%; 1.54%)

* Note: The rate of positive outcomes from non-random BrAC tests for the whole driving population in Catalonia was 4.38% in spring 2012.

For the sake of brevity, hereafter we focus solely on aggregate results for the whole of Catalonia and not those reported for each of the RTAs. In doing so we lose very little generality given that the RTAs were constructed by the traffic authorities for purely

⁹ The non-random BrAC test results were obtained from specifically located sobriety checkpoints. Data from non-random BrAC tests performed on drivers involved in an accident or suspected by traffic officers of driving under the effects of alcohol were not included.

organizational purposes. Moreover, most of the RTAs exhibit similar patterns to those of the aggregate.

Table 3 summarizes the main results from the BrAC tests that were performed in this study. It is important to note that the Spanish legislation¹⁰ distinguishes between two types of offense: administrative-positives and criminal-positives. The former are drivers with a BrAC level between 0.25 and 0.60 mg/l and who face an administrative sanction. Drivers with a BrAC level above 0.60 mg/l are considered to have committed a criminal offense and face more severe legal sanctions, such as fines, temporary suspension of driving license and incarceration. For the purpose of this study, we do not differentiate between these two types of positives.

Table 3. Adjusted results of random BrAC tests in Catalonia (Spain) per road type, day of week and time-slot in spring 2012

		Number of tests	Number of positives	Number of negatives	% positive tests
Road type	Conventional	3,144.50	31.39	3,113.11	1.00
	High-speed	4,451.50	66.51	4,384.99	1.49
Day of the week	Monday	1,082.00	5.93	1,076.08	0.55
	Tues-Thurs	3,016.76	10.37	3,006.38	0.34
	Friday	1,107.36	6.67	1,100.69	0.60
	Saturday	1,112.87	21.12	1,091.75	1.90
	Sunday	1,277.02	53.82	1,223.19	4.21
Time-slot	06 – 14 hrs	2,921.37	33.86	2,887.51	1.16
	14 – 22 hrs	2,659.20	35.82	2,623.39	1.35
	22 – 06 hrs	2,015.43	28.23	1,987.20	1.40
Total		7,596.00	97.91	7,498.09	1.29

As shown in Table 3, high-speed roads exhibit a higher percentage of positive tests (1.49%) than those shown on conventional roads (1.00%). This is of particular concern given that the probability of experiencing severe injuries or death in a road accident increases with speed (O'Donnell and Connor, 1996; Kockelman and Kweon, 2002). Moreover, it is widely known that higher speeds and alcohol consumption both have a positive marginal effect on the probability of being involved in an accident (Elvik, 2005). Thus, the combination of these two factors can be expected to have a positive effect (possibly synergistic) on this probability. However, the fact that high-speed

¹⁰ Spanish legislation on alcohol-impaired driving is contained in Chapter 4 of the Government Decree 1428/2003 (*Real Decreto* 1428/2003), and Article 379 of the Spanish Criminal Code (*Código Penal*).

roads have wider lanes and hard shoulders than those found on conventional roads, and the traffic flows are separated by a central reservation, may have a compensating effect (Rifaat and Chin, 2007). Hence, the overall effect is ambiguous and the policy implication of this result is therefore unclear.

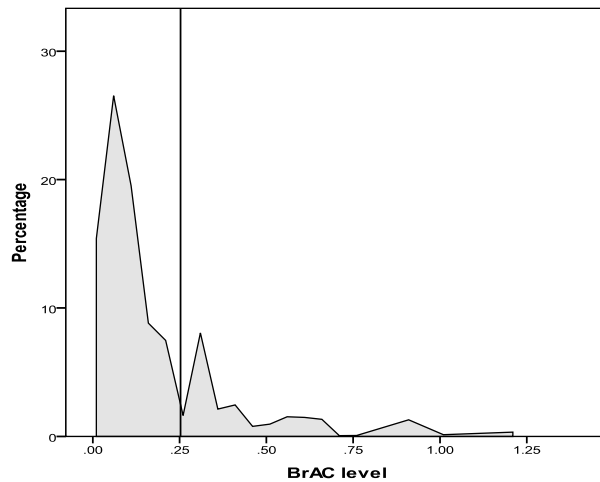
The distribution of the percentage of positives across the days of the week is unsurprising. Consistent with the results in the literature (Vanlaar, 2005), weekdays present a much lower rate than weekends. Sunday is the day with the single highest rate (4.21%). Predictably, the rate peaks between 06:00 and 10:00 am (6.19%) on Sundays, a time interval which matches perfectly with the closing time of clubs and discotheques, which are especially crowded on Saturday nights. The rate of prevalence declines steadily for the remaining two time-slots of the day. Finally, it is worth noting that the rate is higher during the night (1.40%) than during the daytime. Although the data are not shown, this pattern is particularly marked for Saturdays and Sundays and is less intense for weekdays.

4.1. The distribution of BrAC levels

Traffic officers recorded the BrAC level for each driver tested, regardless of whether they exceeded the legal limit or not, so we are able to characterize the distribution of the BrAC levels for negative and positive tests separately. While as many as 94.86% of drivers presented a BrAC rate of 0.00 mg/l, 3.85% presented a positive reading within the legal limits, with the remaining 1.29% exceeding the limit. This implies that conditional on having a BrAC level above zero, the number of negatives is still significantly higher than the number of positives.

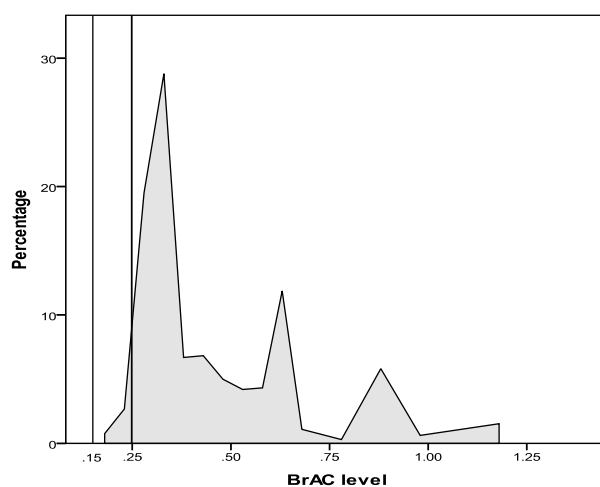
Moreover, if we restrict our attention to drivers who while testing negative presented a BrAC level above zero, we see that 88.02% of these cases (3.47% of the aggregate) presented a rate below 0.16 mg/l. In other words, most had a BrAC level well below the legal limit (0.25 mg/l). As can be seen in Figure 2, the distribution increases over a short range and, after, it is strictly decreasing in the BrAC level, as only 3.20% of these cases had a BrAC level near the legal boundary.

Figure 2. Empirical distribution of BrAC level of drivers conditional on their having a BrAC level above zero



If we focus our attention on the distribution of the BrAC level of those drivers that tested positive – namely, those who exhibited a BrAC level above the general legal limit of 0.25 mg/l (or 0.15 mg/l for particular groups of drivers such as professional drivers or inexperienced drivers), in contrast with what was observed for the negatives, the distribution of positive values is not decreasing in the BrAC level (Figure 3). We observe that the distribution of positive tests peaks at 0.31 mg/l and slowly decreases thereafter, albeit not continuously. Indeed, two local peaks are recorded at around 0.65 and 0.90 mg/l. More than 50% of the positives have a BrAC level above 0.40 mg/l, which is significantly higher than the legal limit. Moreover, 22.15% of these cases exhibited a BrAC level above 0.60 mg/l; i.e. above the criminal limit.

Figure 3. Adjusted distribution of BrAC level of drivers conditional on their having a BrAC level above the legal limit



Therefore, two different patterns can be identified among drivers that had consumed alcoholic beverages. One seems to represent the cautious behavior manifest by the negatives with non-zero BrAC levels, which appears to be absent among the positives. In other words, the fact that the distribution for the negatives is so positively skewed suggests that in most of these cases drivers consciously seek to refrain from approaching the legal limit boundary. However, the fact that the distribution for the positive outcomes slowly decreases – albeit with peaks – across different BrAC levels reveals what is an apparently less careful behavior towards respecting the legal limit. Because of these two opposite patterns of drinking behavior manifested by drivers, only a small number of cases are near the legal boundary.

4.2. Other factors

The driver's personal characteristics, in addition to information related to the type of vehicle being driven and the number of occupants in the vehicle, were collected by the traffic officer. The results of the random BrAC tests by gender and age of the driver, the number of occupants in the vehicle, as well as vehicle type, are shown in Table 4.

Table 4. Results of random BrAC tests in Catalonia (Spain) by type of driver and vehicle in spring 2012

		Number of tests	Number of positives	Number of negatives	% positive tests
Gender	Men	6,115.83	88.42	6,027.41	1.45
	Women	1,480.17	9.49	1,470.68	0.64
Age	< 18	1.13	0.00	1.13	0.00
	18-24	837.68	7.37	830.32	0.88
	25-34	1,873.53	23.50	1,850.02	1.25
	35-44	2,538.05	22.66	2,515.39	0.89
	45-54	1,427.57	23.20	1,404.36	1.63
	55-64	669.12	16.99	652.13	2.54
	65-74	183.61	3.16	180.45	1.72
	<75	65.31	1.03	64.28	1.58
Type of vehicle*	Light	7,087.41	95.52	6,991.89	1.35
	Heavy	311.37	2.39	308.98	0.77
	Two-wheels	146.77	0.00	146.77	0.00
	Others	50.45	0.00	50.45	0.00
Number of occupants	1	4,311.82	36.39	4,275.43	0.84
	2	2,098.15	54.89	2,043.26	2.62
	3	716.15	6.14	710.01	0.86
	4	332.02	0.32	331.71	0.10
	>4	137.85	0.17	137.68	0.12

* Light vehicles refer to cars and vans. Heavy vehicles consist of lorries, trucks and buses. Two-wheels refers to motorbikes and motorcycles. Finally, the category Others includes all other vehicles, such as agricultural vehicles, terrain cranes, etc.

A clear finding is that *ceteris paribus* men are more likely to engage in drink driving than women. As shown in Table 4, the proportion of men with a BrAC level above the legal limit (1.45%) is almost three times that of women (0.64%). This result is consistent with the literature (Institoris et al., 2005; Woratanarat et al., 2009; Bergen et al., 2011; Kelley-Baker et al., 2013; Kim et al., 2013). Yet, it should be noted that around 80% of the tested drivers were men, which means that male drivers are much more frequent than female drivers on non-urban roads in Catalonia. As such, policies targeting male awareness of the dangers of drink driving, if effective, would have a great impact on the alcohol level of the driving population.

If we examine the percentage of positive tests across the age groups, we find that drivers aged between 55 and 64 are the group presenting the highest rates (2.54%). This result was unexpected as most of the previous literature reports a decreasing rate with age, with drivers under 25 being the highest risk group (Mathijssen, 2005; Bergen et al., 2011; Kelley-Baker et al., 2013). If we bear in mind that these studies are based on non-random BrAC tests taken at checkpoints sited near night clubs and discotheques, typically frequented by young people, our results make sense. Outside certain specific time frames and beyond certain BrAC checkpoint sites, young drivers are not the highest risk group. Although a strictly monotonic relationship is not observed, it would appear that in our population, the percentage of positives tends to increase with age until 64 years and to decrease thereafter.

Vehicle type seems to be a relevant category for explaining drink-driving behaviour. For instance, we did not record a single positive case for drivers of two-wheeled vehicles. This result might be due to the fact that motorbikes are infrequent users of roads in non-urban areas, as only 147 drivers of two-wheeled vehicles were tested in this study. Alternatively, it might be the case that such drivers are aware of the importance of abstaining from alcohol due to their greater vulnerability in case of accident or that they exercise greater caution with respect to drink-driving because riding a motorbike requires greater coordination and balance (Sun et al., 1998). Conversely, the drivers of light vehicles presented a much higher percentage of positive tests (1.35%) than drivers of heavy vehicles (0.77%). The fact that more drivers of heavy vehicles work as professional drivers could explain this difference¹¹.

Finally, vehicles with two occupants are found to present the highest percentage of positive tests (2.62%). This percentage of positive outcomes practically triples that of vehicles with a different number of occupants. This result is of some interest, as to the best of our knowledge it has never before been reported in the literature. The role of an accompanying passenger is unclear. A priori it is expected that an accompanying

¹¹ The legal limit for professional drivers is 0.15 milligrams of alcohol in a liter of breath. Positive BrAC outcomes receive a sanction that includes a minimum three-month suspension of the driving license.

person would deter an individual that has been drinking from driving. However, the higher percentage reported here might be connected to the socialization of drinking habits. Note that on Saturdays and Sundays there were on average 1.88 and 2.11 occupants per vehicle respectively, compared with just 1.63 occupants per vehicle on Mondays. A further plausible explanation might be the perceived sense of security provided by the presence of a second occupant. However, a higher percentage of positive outcomes is not observed when there are more than two occupants in the vehicle. A possible explanation for this fall in positive outcomes could be that vehicles with more than two occupants tend to be family groups (parents and children) and so drivers of such vehicles would be more aware of the dangers of driving drunk. Another reason may be related to the small number of sample cases with more than two occupants, especially vehicles carrying four or more occupants. Further research is required on this matter, but it lies beyond the scope of the present study.

To conclude, given the nature of our sample, we can attest to the validity of our findings for the period in which the data were collected (spring 2002). However, we cannot assume that the results are valid for other periods of the year. Additional information gathered in random controls in other time periods would help to evaluate the evolution in the alcohol-impaired driving rate in Catalonia over time. For this purpose, estimates of the alcohol-impaired driving rate from three previous studies carried out by the Catalan Traffic Authority are provided in the Annex. It clearly shows that the percentage of alcohol-impaired drivers in Catalonia has fallen steadily over the last few years. Moreover, the reduction has increased year-on-year which gives us a very sharp decrease if we consider the entire period (2007-2012). More specifically, the magnitude of the estimate has fallen by 56.4% in just five years.

5. Conclusions

Random breath alcohol tests were performed on a large representative sample of drivers in Catalonia (Spain) during the spring of 2012. One of the main strengths of our study is the validity of the data guaranteed by the methodology employed in the data gathering process. Thus, the sample is large and representative of drivers circulating on the non-urban roads of the region. The data were gathered at random checkpoints, which were located using a careful stratification methodology. This is a crucial distinction, given that the percentage of positives obtained was roughly a third of the total obtained when using data gathered at non-random checkpoints. After an exhaustive analysis of the data, our point estimate of the rate of alcohol-impaired drivers in Catalonia is 1.29% for the spring of 2012. Yet, it should be noted that the percentage of positive tests in the same period at non-random, preventive checkpoints in Catalonia was 4.38%. This clearly reflects the fact that (strategic) traffic controls

suffer a large selection bias and cannot be considered representative of the driving population. This distortion occurs because the sites for the preventive checkpoints are specifically selected so as to maximize the number of detections per vehicle tested and to alert drivers of the risk of driving drunk, as opposed to simply measuring the percentage of positive outcomes.

We examined the factors influencing the probability of an individual driving under the effects of alcohol. As expected, the percentage of positives is significantly higher on Saturdays and Sundays than on weekdays. Specifically, Sunday is the day on which the rate peaks. Similarly, the rate is higher during the night than during the day. This pattern is accentuated on weekends. Thus, weekend nights are the time of the week at which the rate is highest. During the early hours of Sunday, the peak is almost four times higher than the mean. Consistent with reports in the literature, the rate of positives is significantly higher for men than for women. However, contrary to our expectations, young people do not constitute a particularly high-risk group. In fact, the percentage of positives shows an increasing though not strictly monotonic pattern for age.

Vehicles with two occupants exhibit a much higher percentage of positives than vehicles with a different number of occupants. Finally, drivers on high-speed roads show a significantly higher percentage of positives than drivers on conventional roads. However, we need to treat this last assertion with some caution, given that our sample excluded low average daily traffic (ADT) roads and, so, many conventional roads were excluded after we imposed this restriction. Experience tells us that alcohol-impaired drivers are inclined to use this kind of road in order to avoid alcohol testing checkpoints and this tendency could be accentuated during weekends.

Compared to the outcomes reported in previous studies, the overall rate identified here has undergone a sharp reduction. The preventive campaigns mounted by the regional government have been intensified in recent years and our results suggest that these actions have been effective, in combination with the heightened presence of traffic authorities on the roads conducting sobriety tests. Attempts at increasing public awareness of the dangers of drink driving are not exclusive to Spain. Similar media campaigns have been launched by virtually all governments around the world. In most countries, the authorities have increased drink driving penalties and lowered legal blood alcohol content levels in their efforts to reduce the number of traffic accidents attributable to alcohol. Our results seem to indicate that setting up checkpoints to test breath alcohol concentrations acts as a deterrent for drunk driving, because drivers are strongly influenced by the consequences of being tested positive.

We should emphasize that one of the limitations of this study is that we would have benefitted from more accurate information for creating the weights to attach to each observation. The potential for improving the constructions of these weights exists however as more accurate information becomes available from the pertinent institutions.

Acknowledgments

The authors thank the Spanish Ministry of Education and the ERDF for grants ECO2012-21787-C01-03 and ECO2012-35584. We also thank the Catalan Traffic Authority, the Catalan police force *Mossos d'Esquadra* and GESOP for carrying out the field work and providing the data. M. Guillén also wishes to express her gratitude to ICREA Academia.

Annex

We provide estimates of the alcohol-impaired driving rate from three previous studies carried out by the Catalan Traffic Authority, with data from 2007, 2009 and 2010. However, various factors must be taken into account. In the first place, the weights used in each of these three studies differ from those used for the current 2012 edition. More specifically, the earlier studies used different weights for each day of the week and did not distinguish by time-slots. In order to make valid comparisons, the data from these previous studies were reweighted according to the weights used in the present edition. Moreover, we need to bear in mind that our estimates are sensitive to seasonal differences. For the present edition, data for both the spring and the autumn were gathered. The wave carried out in the autumn consisted of a sample of 2,240 random BrAC tests. Our estimate for the yearly average BrAC level (2012) was constructed by taking a weighted average of the aforementioned figures (Table A.1).

For the previous three editions, however, the data were gathered solely during the autumn. Based on the study conducted in 2012, we learnt that the proportion of positive outcomes in random BrAC tests is higher during the spring than during the autumn. Additionally, the positive results in non-random BrAC tests presented seasonal patterns during the period analyzed, as indicated in section 3.2. Therefore, the raw estimates from the previous three editions are expected to be negatively biased if the seasonal component is not taken into consideration. Before comparing the figures a seasonal adjustment was performed for the years 2007, 2009 and 2010. Given that traffic officers regularly record the BrAC levels of the tests they perform at non-random checkpoints, a time series analysis allows us to retrieve the seasonal component for each month in the year. This is what we used as a baseline to adjust the estimated rates of positive outcomes at random checkpoints from each of the previous years contained in Table A.1.

Table A.1. Evolution in seasonally adjusted BrAC positive outcomes in Catalonia (Spain) over the period 2007-2012

Year	Original estimate (autumn)	Adjusted estimate (year)	Interannual variation	2007-2012 variation
2007	2.30%	2.43%	-	-
2009	2.06%	2.18%	-10.3%	-
2010	1.57%	1.66%	-23.9%	-
2012	0.69%	1.06%	-36.1%	-56.4%

References

Ahlm, K., Björnstig, U., Öström, M., 2009. Alcohol and drugs in fatally and non-fatally injured motor vehicle drivers in northern Sweden. *Accident Analysis and Prevention*, 41(1), 129-136.

Bergen, G., Shults, R.A., Rudd, R.A., 2011. Vital signs: Alcohol-impaired driving among adults – United States, 2010. *Morbidity and Mortality Weekly Report*, 60(39), 1351-1356.

Cal, R., Cárdenas, J., 1998. *Ingeniería de Tránsito. Fundamentos y aplicaciones*. México: Alfaomega.

Campos, V.R., De Souza e Silva, R., Dualibi, S., Laranjeira, R., Palacios, E.N., Grube L.W., Pinsky, I., 2013. Drinking and driving in southeastern Brazil: Results from a roadside survey study. *Addictive Behaviors*, 38(1), 1442-1447.

Chongsuvivatwong, V., Ritsmitchai, S., Suriyawongpaisal, P., Chariyalertsak, S., Weerachai, K., Punyaratabandhu, P., Sutiwipakorn, W., V. I. R. A. S. A. K. D. I., 1999. High prevalence of drink-driving in Thailand. *Drug and Alcohol Review*, 18(3), 293-298.

Del Río, M.C., Prada, C., Alvarez, F.J., 2002. Drinking habits throughout the seasons of the year in the Spanish population. *Journal of Studies on Alcohol*, 63(5), 577-580.

Downey, L.A., King, R., Papafotiou, K., Swann, P., Ogden, E., Boorman, M., Stough, C., 2013. The effects of cannabis and alcohol on simulated driving: Influences of dose and experience. *Accident Analysis and Prevention*, 50, 879-886.

Elvik, R., 2005. Speed and road safety: synthesis of evidence from evaluation studies. *Transportation Research Record: Journal of the Transportation Research Board*, 1908(1), 59-69.

Garber, N.J., Hoel, L.A., 2009. *Traffic and Highway Engineering*. Toronto: Cengage Learning.

Gjerde, H., Normann, P.T., Pettersen, B.S., Assum, T., Aldrin, M., Johansen, U., Kristoffersen, L., Øiestad, E.L., Christophersen, A.S., Mørland, J., 2008. Prevalence of alcohol and drugs among Norwegian motor vehicle drivers: a roadside survey. *Accident Analysis and Prevention*, 40(5), 1765-1772.

Holmgren, P., Holmgren, A., Ahlner, J., 2005. Alcohol and drugs in drivers fatally injured in traffic accidents in Sweden during the years 2000-2002. *Forensic Science International*, 151, 11–17.

Institoris, L., Tóth, A.R., Molnár, A., Árok, Z., Kereszty, É., Varga, T., 2013. The frequency of alcohol, illicit and licit drug consumption in the general driving population in South-East Hungary. *Forensic Science International*, 224(1-3), 37-43.

Kelley-Baker, T., Lacey, J.H., Voas, R.B., Romano, E., Yao, J., Berning, A., 2013. Drinking and Driving in the United States: Comparing Results from the 2007 and 1996 National Roadside Surveys. *Traffic Injury Prevention*, 14(2), 117-126.

Kim, J.H., Wong, A.H., Goggings, W.B., Lau, J., Griffiths, S.M., 2013. Drink driving in Hong Kong: The competing effects of random breath testing and alcohol tax reductions. *Addiction*, 108(7), 1217-1228.

Kish, L., 1995. *Survey Sampling*. New York: Wiley.

Kockelman, K.M., Kweon Y.J., 2002. Driver injury severity: an application of ordered probit models. *Accident Analysis and Prevention*, 34(3), 313-321.

Lacey, J.H., Kelley-Baker, T., Voas, R.B., Romano, E., Furr-Holden, C.D., Torres, P., Berning, A., 2011. Alcohol- and Drug-Involved Driving in the United States: Methodology for the 2007 National Roadside Survey. *Evaluation Review*, 35(4), 319-353.

Levy, P.S., 1991. *Sampling of populations: Methods and applications*. New York: John Wiley & Sons.

Löbmann, R., 2002. Drunk driving: probability of detection and its perception. *Policing: An International Journal of Police Strategies & Management*, 25(4), 770 – 788.

Mathijssen, M.P.M., 2005. Drink driving policy and road safety in the Netherlands: a retrospective analysis. *Transportation Research Part E*, 41(5), 395–408.

Moskowitz, H., Fiorentino, D., 2000. A review of the literature on the effects of low doses of alcohol on driving-related skills. Report No. DOT HS 809 028. National Highway Traffic Safety Administration, Washington.

O'Donnell, C.J., Connor, D.H., 1996. Predicting the severity of motor vehicle accident injuries using models of ordered multiple choice. *Accident Analysis and Prevention*, 28(6), 739-753.

Pasaoglu, G., Fiorello, D., Martino, A., Scarcella, G., Alemanno, A., Zubaryeva, A., Thiel, C., 2012. Driving and parking patterns of European car drivers: a mobility survey. JRC Scientific and Policy Reports, European Commission.

Peek-Asa, C., 1999. The effect of random alcohol screening in reducing motor vehicle crash injuries. *American Journal of Preventive Medicine*, 16(1), suppl., 57-67.

Peek-Asa, C., Kraus, J.F., 1996. Alcohol use, driver, and crash characteristics among injured motorcycle drivers. *The Journal of Trauma and Acute Care Surgery*, 41 (6), 989-993.

Rifaat, S.M., Chin, H.C., 2007. Accident severity analysis using ordered probit model. *Journal of Advanced Transportation*, 41(1), 91-114.

Roess, R.P., Prassas, E.S., McShane, W.R., 2011. *Traffic Engineering*. New Jersey: Prentice Hall.

Sun, S. W., Kahn, D. M., Swan, K. G., 1998. Lowering the legal blood alcohol level for motorcyclists. *Accident Analysis and Prevention*, 30(1), 133-136.

Vanlaar, W., 2005. Drink driving in Belgium: results from the third and improved roadside survey. *Accident Analysis and Prevention*, 37(3), 391-397.

Vanlaar, W., 2008. Less is more: The influence of traffic count on drinking and driving behaviour. *Accident Analysis and Prevention* 40(3), 1018-1022.

Vanlaar, W., Robertson, R., Marcoux, K., Mayhew, D., Brown, S., & Boase, P., 2012. Trends in alcohol-impaired driving in Canada. *Accident Analysis and Prevention*, 48(S1), 297-302.

Voas, R.B., Johnson, M.B., Miller, B.A., 2013. Alcohol and drug use among young adults driving to a drinking location. *Drug and Alcohol Dependence*, in press.

Wagenaar, A.C., Zobeck, T., Williams, G.D., Hingson, R., 1995. Methods used in studies of drink-drive control efforts: a meta-analysis of the literature from 1960 to 1991. *Accident Analysis and Prevention*, 27(3), 307-316.

WHO, 2011. *Global status report on alcohol and health*. World Health Organization, Geneva.

Williams, A.F., 2006. Alcohol-impaired driving and its consequences in the United States: The past 25 years. *Journal of Safety Research*, 37, 123-138.

Woratanarat, P., Ingsathit, A., Suriyawongpaisal, P., Rattanasiri, S., Chatchaipun, P., Wattayakorn, K., Anukarahanonta, T., 2009. Alcohol, illicit and non-illicit psychoactive drug use and road traffic injury in Thailand: A case-control study. *Accident Analysis and Prevention*, 41(3), 651-657.



2006

CREAP2006-01

Matas, A. (GEAP); **Raymond, J.Ll.** (GEAP)

"Economic development and changes in car ownership patterns"
(Juny 2006)

CREAP2006-02

Trillas, F. (IEB); **Montolio, D.** (IEB); **Duch, N.** (IEB)

"Productive efficiency and regulatory reform: The case of Vehicle Inspection Services"
(Setembre 2006)

CREAP2006-03

Bel, G. (PPRE-IREA); **Fageda, X.** (PPRE-IREA)

"Factors explaining local privatization: A meta-regression analysis"
(Octubre 2006)

CREAP2006-04

Fernández-Villadangos, L. (PPRE-IREA)

"Are two-part tariffs efficient when consumers plan ahead?: An empirical study"
(Octubre 2006)

CREAP2006-05

Artís, M. (AQR-IREA); **Ramos, R.** (AQR-IREA); **Suriñach, J.** (AQR-IREA)

"Job losses, outsourcing and relocation: Empirical evidence using microdata"
(Octubre 2006)

CREAP2006-06

Alcañiz, M. (RISC-IREA); **Costa, A.**; **Guillén, M.** (RISC-IREA); **Luna, C.**; **Rovira, C.**

"Calculation of the variance in surveys of the economic climate"
(Novembre 2006)

CREAP2006-07

Albalade, D. (PPRE-IREA)

"Lowering blood alcohol content levels to save lives: The European Experience"
(Desembre 2006)

CREAP2006-08

Garrido, A. (IEB); **Arqué, P.** (IEB)

"The choice of banking firm: Are the interest rate a significant criteria?"
(Desembre 2006)

CREAP2006-09

Segarra, A. (GRIT); **Teruel-Carrizosa, M.** (GRIT)

"Productivity growth and competition in spanish manufacturing firms:
What has happened in recent years?"
(Desembre 2006)

CREAP2006-10

Andonova, V.; **Díaz-Serrano, Luis.** (CREB)

"Political institutions and the development of telecommunications"
(Desembre 2006)

CREAP2006-11

Raymond, J.Ll.(GEAP); **Roig, J.Ll.** (GEAP)

"Capital humano: un análisis comparativo Catalunya-España"
(Desembre 2006)

CREAP2006-12

Rodríguez, M.(CREB); **Stoyanova, A.** (CREB)

"Changes in the demand for private medical insurance following a shift in tax incentives"
(Desembre 2006)



CREAP2006-13

Royuela, V. (AQR-IREA); **Lambiri, D.**; **Biagi, B.**

"Economía urbana y calidad de vida. Una revisión del estado del conocimiento en España"
(Desembre 2006)

CREAP2006-14

Camarero, M.; **Carrion-i-Silvestre, J.LL.** (AQR-IREA); **Tamarit, C.**

"New evidence of the real interest rate parity for OECD countries using panel unit root tests with breaks"
(Desembre 2006)

CREAP2006-15

Karanassou, M.; **Sala, H.** (GEAP); **Snower, D. J.**

"The macroeconomics of the labor market: Three fundamental views"
(Desembre 2006)

2007

XREAP2007-01

Castany, L. (AQR-IREA); **López-Bazo, E.** (AQR-IREA); **Moreno, R.** (AQR-IREA)

"Decomposing differences in total factor productivity across firm size"
(Març 2007)

XREAP2007-02

Raymond, J. Ll. (GEAP); **Roig, J. Ll.** (GEAP)

"Una propuesta de evaluación de las externalidades de capital humano en la empresa"
(Abril 2007)

XREAP2007-03

Durán, J. M. (IEB); **Esteller, A.** (IEB)

"An empirical analysis of wealth taxation: Equity vs. Tax compliance"
(Juny 2007)

XREAP2007-04

Matas, A. (GEAP); **Raymond, J.Ll.** (GEAP)

"Cross-section data, disequilibrium situations and estimated coefficients: evidence from car ownership demand"
(Juny 2007)

XREAP2007-05

Jofre-Montseny, J. (IEB); **Solé-Ollé, A.** (IEB)

"Tax differentials and agglomeration economies in intraregional firm location"
(Juny 2007)

XREAP2007-06

Álvarez-Albelo, C. (CREB); **Hernández-Martín, R.**

"Explaining high economic growth in small tourism countries with a dynamic general equilibrium model"
(Juliol 2007)

XREAP2007-07

Duch, N. (IEB); **Montolio, D.** (IEB); **Mediavilla, M.**

"Evaluating the impact of public subsidies on a firm's performance: a quasi-experimental approach"
(Juliol 2007)

XREAP2007-08

Segarra-Blasco, A. (GRIT)

"Innovation sources and productivity: a quantile regression analysis"
(Octubre 2007)

XREAP2007-09

Albalade, D. (PPRE-IREA)

"Shifting death to their Alternatives: The case of Toll Motorways"
(Octubre 2007)

XREAP2007-10

Segarra-Blasco, A. (GRIT); **García-Quevedo, J.** (IEB); **Teruel-Carrizosa, M.** (GRIT)

"Barriers to innovation and public policy in catalonia"
(Novembre 2007)



XREAP2007-11

Bel, G. (PPRE-IREA); **Foote, J.**

“Comparison of recent toll road concession transactions in the United States and France”
(Novembre 2007)

XREAP2007-12

Segarra-Blasco, A. (GRIT);

“Innovation, R&D spillovers and productivity: the role of knowledge-intensive services”
(Novembre 2007)

XREAP2007-13

Bermúdez Morata, Ll. (RFA-IREA); **Guillén Estany, M.** (RFA-IREA), **Solé Auró, A.** (RFA-IREA)

“Impacto de la inmigración sobre la esperanza de vida en salud y en discapacidad de la población española”
(Novembre 2007)

XREAP2007-14

Calaeys, P. (AQR-IREA); **Ramos, R.** (AQR-IREA), **Suriñach, J.** (AQR-IREA)

“Fiscal sustainability across government tiers”
(Desembre 2007)

XREAP2007-15

Sánchez Hugalbe, A. (IEB)

“Influencia de la inmigración en la elección escolar”
(Desembre 2007)

2008

XREAP2008-01

Durán Weitkamp, C. (GRIT); **Martín Bofarull, M.** (GRIT) ; **Pablo Martí, F.**

“Economic effects of road accessibility in the Pyrenees: User perspective”
(Gener 2008)

XREAP2008-02

Díaz-Serrano, L.; **Stoyanova, A. P.** (CREB)

“The Causal Relationship between Individual’s Choice Behavior and Self-Reported Satisfaction: the Case of Residential Mobility in the EU”
(Març 2008)

XREAP2008-03

Matas, A. (GEAP); **Raymond, J. L.** (GEAP); **Roig, J. L.** (GEAP)

“Car ownership and access to jobs in Spain”
(Abril 2008)

XREAP2008-04

Bel, G. (PPRE-IREA) ; **Fageda, X.** (PPRE-IREA)

“Privatization and competition in the delivery of local services: An empirical examination of the dual market hypothesis”
(Abril 2008)

XREAP2008-05

Matas, A. (GEAP); **Raymond, J. L.** (GEAP); **Roig, J. L.** (GEAP)

“Job accessibility and employment probability”
(Maig 2008)

XREAP2008-06

Basher, S. A.; **Carrión, J. Ll.** (AQR-IREA)

Deconstructing Shocks and Persistence in OECD Real Exchange Rates
(Juny 2008)

XREAP2008-07

Sanromá, E. (IEB); **Ramos, R.** (AQR-IREA); **Simón, H.**

Portabilidad del capital humano y asimilación de los inmigrantes. Evidencia para España
(Juliol 2008)

XREAP2008-08

Basher, S. A.; **Carrión, J. Ll.** (AQR-IREA)

Price level convergence, purchasing power parity and multiple structural breaks: An application to US cities
(Juliol 2008)



XREAP2008-09

Bermúdez, Ll. (RFA-IREA)

A priori ratemaking using bivariate poisson regression models
(Juliol 2008)

XREAP2008-10

Solé-Ollé, A. (IEB), **Hortas Rico, M.** (IEB)

Does urban sprawl increase the costs of providing local public services? Evidence from Spanish municipalities
(Novembre 2008)

XREAP2008-11

Teruel-Carrizosa, M. (GRIT), **Segarra-Blasco, A.** (GRIT)

Immigration and Firm Growth: Evidence from Spanish cities
(Novembre 2008)

XREAP2008-12

Duch-Brown, N. (IEB), **García-Quevedo, J.** (IEB), **Montolio, D.** (IEB)

Assessing the assignation of public subsidies: Do the experts choose the most efficient R&D projects?
(Novembre 2008)

XREAP2008-13

Bilotkach, V., Fageda, X. (PPRE-IREA), **Flores-Fillol, R.**

Scheduled service versus personal transportation: the role of distance
(Desembre 2008)

XREAP2008-14

Albalate, D. (PPRE-IREA), **Gel, G.** (PPRE-IREA)

Tourism and urban transport: Holding demand pressure under supply constraints
(Desembre 2008)

2009

XREAP2009-01

Calonge, S. (CREB); **Tejada, O.**

“A theoretical and practical study on linear reforms of dual taxes”
(Febrer 2009)

XREAP2009-02

Albalate, D. (PPRE-IREA); **Fernández-Villadangos, L.** (PPRE-IREA)

“Exploring Determinants of Urban Motorcycle Accident Severity: The Case of Barcelona”
(Març 2009)

XREAP2009-03

Borrell, J. R. (PPRE-IREA); **Fernández-Villadangos, L.** (PPRE-IREA)

“Assessing excess profits from different entry regulations”
(Abril 2009)

XREAP2009-04

Sanromá, E. (IEB); **Ramos, R.** (AQR-IREA), **Simon, H.**

“Los salarios de los inmigrantes en el mercado de trabajo español. ¿Importa el origen del capital humano?”
(Abril 2009)

XREAP2009-05

Jiménez, J. L.; **Perdiguero, J.** (PPRE-IREA)

“(No)competition in the Spanish retailing gasoline market: a variance filter approach”
(Maig 2009)

XREAP2009-06

Álvarez-Albelo, C. D. (CREB), **Manresa, A.** (CREB), **Pigem-Vigo, M.** (CREB)

“International trade as the sole engine of growth for an economy”
(Juny 2009)

XREAP2009-07

Callejón, M. (PPRE-IREA), **Ortún V, M.**

“The Black Box of Business Dynamics”
(Setembre 2009)



XREAP2009-08

Lucena, A. (CREB)

“The antecedents and innovation consequences of organizational search: empirical evidence for Spain”
(Octubre 2009)

XREAP2009-09

Domènech Campmajó, L. (PPRE-IREA)

“Competition between TV Platforms”
(Octubre 2009)

XREAP2009-10

Solé-Auró, A. (RFA-IREA), **Guillén, M.** (RFA-IREA), **Crimmins, E. M.**

“Health care utilization among immigrants and native-born populations in 11 European countries. Results from the Survey of Health, Ageing and Retirement in Europe”
(Octubre 2009)

XREAP2009-11

Segarra, A. (GRIT), **Teruel, M.** (GRIT)

“Small firms, growth and financial constraints”
(Octubre 2009)

XREAP2009-12

Matas, A. (GEAP), **Raymond, J.Ll.** (GEAP), **Ruiz, A.** (GEAP)

“Traffic forecasts under uncertainty and capacity constraints”
(Novembre 2009)

XREAP2009-13

Sole-Ollé, A. (IEB)

“Inter-regional redistribution through infrastructure investment: tactical or programmatic?”
(Novembre 2009)

XREAP2009-14

Del Barrio-Castro, T., **García-Quevedo, J.** (IEB)

“The determinants of university patenting: Do incentives matter?”
(Novembre 2009)

XREAP2009-15

Ramos, R. (AQR-IREA), **Suriñach, J.** (AQR-IREA), **Artís, M.** (AQR-IREA)

“Human capital spillovers, productivity and regional convergence in Spain”
(Novembre 2009)

XREAP2009-16

Álvarez-Albelo, C. D. (CREB), **Hernández-Martín, R.**

“The commons and anti-commons problems in the tourism economy”
(Desembre 2009)

2010

XREAP2010-01

García-López, M. A. (GEAP)

“The Accessibility City. When Transport Infrastructure Matters in Urban Spatial Structure”
(Febrer 2010)

XREAP2010-02

García-Quevedo, J. (IEB), **Mas-Verdú, F.** (IEB), **Polo-Otero, J.** (IEB)

“Which firms want PhDs? The effect of the university-industry relationship on the PhD labour market”
(Març 2010)

XREAP2010-03

Pitt, D., **Guillén, M.** (RFA-IREA)

“An introduction to parametric and non-parametric models for bivariate positive insurance claim severity distributions”
(Març 2010)



XREAP2010-04

Bermúdez, Ll. (RFA-IREA), **Karlis, D.**

“Modelling dependence in a ratemaking procedure with multivariate Poisson regression models”
(Abril 2010)

XREAP2010-05

Di Paolo, A. (IEB)

“Parental education and family characteristics: educational opportunities across cohorts in Italy and Spain”
(Maig 2010)

XREAP2010-06

Simón, H. (IEB), **Ramos, R.** (AQR-IREA), **Sanromá, E.** (IEB)

“Movilidad ocupacional de los inmigrantes en una economía de bajas cualificaciones. El caso de España”
(Juny 2010)

XREAP2010-07

Di Paolo, A. (GEAP & IEB), **Raymond, J. Ll.** (GEAP & IEB)

“Language knowledge and earnings in Catalonia”
(Juliol 2010)

XREAP2010-08

Bolancé, C. (RFA-IREA), **Alemaný, R.** (RFA-IREA), **Guillén, M.** (RFA-IREA)

“Prediction of the economic cost of individual long-term care in the Spanish population”
(Setembre 2010)

XREAP2010-09

Di Paolo, A. (GEAP & IEB)

“Knowledge of catalan, public/private sector choice and earnings: Evidence from a double sample selection model”
(Setembre 2010)

XREAP2010-10

Coad, A., Segarra, A. (GRIT), **Teruel, M.** (GRIT)

“Like milk or wine: Does firm performance improve with age?”
(Setembre 2010)

XREAP2010-11

Di Paolo, A. (GEAP & IEB), **Raymond, J. Ll.** (GEAP & IEB), **Calero, J.** (IEB)

“Exploring educational mobility in Europe”
(Octubre 2010)

XREAP2010-12

Borrell, A. (GiM-IREA), **Fernández-Villadangos, L.** (GiM-IREA)

“Clustering or scattering: the underlying reason for regulating distance among retail outlets”
(Desembre 2010)

XREAP2010-13

Di Paolo, A. (GEAP & IEB)

“School composition effects in Spain”
(Desembre 2010)

XREAP2010-14

Fageda, X. (GiM-IREA), **Flores-Fillol, R.**

“Technology, Business Models and Network Structure in the Airline Industry”
(Desembre 2010)

XREAP2010-15

Albalate, D. (GiM-IREA), **Bel, G.** (GiM-IREA), **Fageda, X.** (GiM-IREA)

“Is it Redistribution or Centralization? On the Determinants of Government Investment in Infrastructure”
(Desembre 2010)

XREAP2010-16

Oppedisano, V., Turati, G.

“What are the causes of educational inequalities and of their evolution over time in Europe? Evidence from PISA”
(Desembre 2010)



XREAP2010-17

Canova, L., Vaglio, A.

“Why do educated mothers matter? A model of parental help”
(Desembre 2010)

2011

XREAP2011-01

Fageda, X. (GiM-IREA), **Perdiguero, J.** (GiM-IREA)

“An empirical analysis of a merger between a network and low-cost airlines”
(Maig 2011)

XREAP2011-02

Moreno-Torres, I. (ACCO, CRES & GiM-IREA)

“What if there was a stronger pharmaceutical price competition in Spain? When regulation has a similar effect to collusion”
(Maig 2011)

XREAP2011-03

Miguélez, E. (AQR-IREA); **Gómez-Miguélez, I.**

“Singling out individual inventors from patent data”
(Maig 2011)

XREAP2011-04

Moreno-Torres, I. (ACCO, CRES & GiM-IREA)

“Generic drugs in Spain: price competition vs. moral hazard”
(Maig 2011)

XREAP2011-05

Nieto, S. (AQR-IREA), **Ramos, R.** (AQR-IREA)

“¿Afecta la sobreeducación de los padres al rendimiento académico de sus hijos?”
(Maig 2011)

XREAP2011-06

Pitt, D., Guillén, M. (RFA-IREA), **Bolancé, C.** (RFA-IREA)

“Estimation of Parametric and Nonparametric Models for Univariate Claim Severity Distributions - an approach using R”
(Juny 2011)

XREAP2011-07

Guillén, M. (RFA-IREA), **Comas-Herrera, A.**

“How much risk is mitigated by LTC Insurance? A case study of the public system in Spain”
(Juny 2011)

XREAP2011-08

Ayuso, M. (RFA-IREA), **Guillén, M.** (RFA-IREA), **Bolancé, C.** (RFA-IREA)

“Loss risk through fraud in car insurance”
(Juny 2011)

XREAP2011-09

Duch-Brown, N. (IEB), **García-Quevedo, J.** (IEB), **Montolio, D.** (IEB)

“The link between public support and private R&D effort: What is the optimal subsidy?”
(Juny 2011)

XREAP2011-10

Bermúdez, Ll. (RFA-IREA), **Karlis, D.**

“Mixture of bivariate Poisson regression models with an application to insurance”
(Juliol 2011)

XREAP2011-11

Varela-Irimia, X-L. (GRIT)

“Age effects, unobserved characteristics and hedonic price indexes: The Spanish car market in the 1990s”
(Agost 2011)

XREAP2011-12

Bermúdez, Ll. (RFA-IREA), **Ferri, A.** (RFA-IREA), **Guillén, M.** (RFA-IREA)

“A correlation sensitivity analysis of non-life underwriting risk in solvency capital requirement estimation”
(Setembre 2011)



XREAP2011-13

Guillén, M. (RFA-IREA), **Pérez-Marín, A.** (RFA-IREA), **Alcañiz, M.** (RFA-IREA)

“A logistic regression approach to estimating customer profit loss due to lapses in insurance”
(Octubre 2011)

XREAP2011-14

Jiménez, J. L., Perdiguero, J. (GiM-IREA), **García, C.**

“Evaluation of subsidies programs to sell green cars: Impact on prices, quantities and efficiency”
(Octubre 2011)

XREAP2011-15

Arespa, M. (CREB)

“A New Open Economy Macroeconomic Model with Endogenous Portfolio Diversification and Firms Entry”
(Octubre 2011)

XREAP2011-16

Matas, A. (GEAP), **Raymond, J. L.** (GEAP), **Roig, J.L.** (GEAP)

“The impact of agglomeration effects and accessibility on wages”
(Novembre 2011)

XREAP2011-17

Segarra, A. (GRIT)

“R&D cooperation between Spanish firms and scientific partners: what is the role of tertiary education?”
(Novembre 2011)

XREAP2011-18

García-Pérez, J. I.; Hidalgo-Hidalgo, M.; Robles-Zurita, J. A.

“Does grade retention affect achievement? Some evidence from PISA”
(Novembre 2011)

XREAP2011-19

Arespa, M. (CREB)

“Macroeconomics of extensive margins: a simple model”
(Novembre 2011)

XREAP2011-20

García-Quevedo, J. (IEB), **Pellegrino, G.** (IEB), **Vivarelli, M.**

“The determinants of YICs’ R&D activity”
(Desembre 2011)

XREAP2011-21

González-Val, R. (IEB), **Olmo, J.**

“Growth in a Cross-Section of Cities: Location, Increasing Returns or Random Growth?”
(Desembre 2011)

XREAP2011-22

Gombau, V. (GRIT), **Segarra, A.** (GRIT)

“The Innovation and Imitation Dichotomy in Spanish firms: do absorptive capacity and the technological frontier matter?”
(Desembre 2011)

2012

XREAP2012-01

Borrell, J. R. (GiM-IREA), **Jiménez, J. L., García, C.**

“Evaluating Antitrust Leniency Programs”
(Gener 2012)

XREAP2012-02

Ferri, A. (RFA-IREA), **Guillén, M.** (RFA-IREA), **Bermúdez, Ll.** (RFA-IREA)

“Solvency capital estimation and risk measures”
(Gener 2012)

XREAP2012-03

Ferri, A. (RFA-IREA), **Bermúdez, Ll.** (RFA-IREA), **Guillén, M.** (RFA-IREA)

“How to use the standard model with own data”
(Febrer 2012)



XREAP2012-04

Perdiguero, J. (GiM-IREA), **Borrell, J.R.** (GiM-IREA)

“Driving competition in local gasoline markets”

(Març 2012)

XREAP2012-05

D’Amico, G., **Guillen, M.** (RFA-IREA), Manca, R.

“Discrete time Non-homogeneous Semi-Markov Processes applied to Models for Disability Insurance”

(Març 2012)

XREAP2012-06

Bové-Sans, M. A. (GRIT), Laguado-Ramírez, R.

“Quantitative analysis of image factors in a cultural heritage tourist destination”

(Abril 2012)

XREAP2012-07

Tello, C. (AQR-IREA), **Ramos, R.** (AQR-IREA), **Artís, M.** (AQR-IREA)

“Changes in wage structure in Mexico going beyond the mean: An analysis of differences in distribution, 1987-2008”

(Maig 2012)

XREAP2012-08

Jofre-Monseny, J. (IEB), **Marín-López, R.** (IEB), **Viladecans-Marsal, E.** (IEB)

“What underlies localization and urbanization economies? Evidence from the location of new firms”

(Maig 2012)

XREAP2012-09

Muñiz, I. (GEAP), **Calatayud, D.**, **Dobaño, R.**

“Los límites de la compacidad urbana como instrumento a favor de la sostenibilidad. La hipótesis de la compensación en Barcelona medida a través de la huella ecológica de la movilidad y la vivienda”

(Maig 2012)

XREAP2012-10

Arqué-Castells, P. (GEAP), **Mohnen, P.**

“Sunk costs, extensive R&D subsidies and permanent inducement effects”

(Maig 2012)

XREAP2012-11

Boj, E. (CREB), **Delicado, P.**, **Fortiana, J.**, **Esteve, A.**, **Caballé, A.**

“Local Distance-Based Generalized Linear Models using the dbstats package for R”

(Maig 2012)

XREAP2012-12

Royuela, V. (AQR-IREA)

“What about people in European Regional Science?”

(Maig 2012)

XREAP2012-13

Osorio A. M. (RFA-IREA), **Bolancé, C.** (RFA-IREA), **Madise, N.**

“Intermediary and structural determinants of early childhood health in Colombia: exploring the role of communities”

(Juny 2012)

XREAP2012-14

Míguelz, E. (AQR-IREA), **Moreno, R.** (AQR-IREA)

“Do labour mobility and networks foster geographical knowledge diffusion? The case of European regions”

(Juliol 2012)

XREAP2012-15

Teixidó-Figueras, J. (GRIT), **Duró, J. A.** (GRIT)

“Ecological Footprint Inequality: A methodological review and some results”

(Setembre 2012)

XREAP2012-16

Varela-Irimia, X-L. (GRIT)

“Profitability, uncertainty and multi-product firm product proliferation: The Spanish car industry”

(Setembre 2012)



XREAP2012-17

Duró, J. A. (GRIT), **Teixidó-Figueras, J.** (GRIT)

“Ecological Footprint Inequality across countries: the role of environment intensity, income and interaction effects”
(Octubre 2012)

XREAP2012-18

Manresa, A. (CREB), **Sancho, F.**

“Leontief versus Ghosh: two faces of the same coin”
(Octubre 2012)

XREAP2012-19

Alemany, R. (RFA-IREA), **Bolancé, C.** (RFA-IREA), **Guillén, M.** (RFA-IREA)

“Nonparametric estimation of Value-at-Risk”
(Octubre 2012)

XREAP2012-20

Herrera-Idárraga, P. (AQR-IREA), **López-Bazo, E.** (AQR-IREA), **Motellón, E.** (AQR-IREA)

“Informality and overeducation in the labor market of a developing country”
(Novembre 2012)

XREAP2012-21

Di Paolo, A. (AQR-IREA)

“(Endogenous) occupational choices and job satisfaction among recent PhD recipients: evidence from Catalonia”
(Desembre 2012)

2013

XREAP2013-01

Segarra, A. (GRIT), **García-Quevedo, J.** (IEB), **Teruel, M.** (GRIT)

“Financial constraints and the failure of innovation projects”
(Març 2013)

XREAP2013-02

Osorio, A. M. (RFA-IREA), **Bolancé, C.** (RFA-IREA), **Madise, N.**, **Rathmann, K.**

“Social Determinants of Child Health in Colombia: Can Community Education Moderate the Effect of Family Characteristics?”
(Març 2013)

XREAP2013-03

Teixidó-Figueras, J. (GRIT), **Duró, J. A.** (GRIT)

“The building blocks of international ecological footprint inequality: a regression-based decomposition”
(Abril 2013)

XREAP2013-04

Salcedo-Sanz, S., **Carro-Calvo, L.**, **Claramunt, M.** (CREB), **Castañer, A.** (CREB), **Marmol, M.** (CREB)

“An Analysis of Black-box Optimization Problems in Reinsurance: Evolutionary-based Approaches”
(Maig 2013)

XREAP2013-05

Alcañiz, M. (RFA), **Guillén, M.** (RFA), **Sánchez-Moscona, D.** (RFA), **Santolino, M.** (RFA), **Llatje, O.**, **Ramon, Ll.**

“Prevalence of alcohol-impaired drivers based on random breath tests in a roadside survey”
(Juliol 2013)



xreap@fbg.ub.es