

Simultaneous Spinal and Intracranial Chronic Subdural Hematoma Cured by Craniotomy and Laminectomy: A Video Case Report

Hideki Kanamaru Kenji Kanamaru Tomohiro Araki Kazuhide Hamada

Suzuka Kaisei Hospital, Suzuka, Japan

Key Words

Simultaneous spinal and intracranial chronic subdural hematoma · Craniotomy · Laminectomy

Abstract

Simultaneous spinal and intracranial chronic subdural hematoma (CSDH) is a rare entity. A 67-year-old man visited our hospital due to headache after diving into a river 2 weeks before. Non-enhanced computed tomography (CT) and magnetic resonance imaging (MRI) revealed bilateral intracranial CSDH. The bilateral CSDH was evacuated and his symptoms improved. Three days after craniotomy, he complained of sensory disturbance on his buttocks. Lumbar MRI showed a space-occupying lesion behind the thecal sac at L5. CT with myelography showed a subdural mass lesion; there was no communication with the subarachnoid space. Fourteen days after craniotomy, L5 laminectomy was performed and the dura mater was incised carefully. The video shows that a liquid hematoma similar to the intracranial CSDH flowed out, followed by cerebrospinal fluid. His symptoms improved after the operation and the hematoma did not recur. This is a rare condition of spinal CSDH demonstrated by neuroimaging and intraoperative video.

© 2016 The Author(s)
Published by S. Karger AG, Basel

Introduction

Spinal subdural hematoma is rare entity with various etiologies that is related to anti-coagulation, blood dyscrasia, lumbar puncture, trauma, spinal anesthesia or vascular malformation [1]. Simultaneous spinal and intracranial chronic subdural hematoma (CSDH) is

KARGER

Hideki Kanamaru, MD
Suzuka General Hospital
1275-53 Yamanohana, Yasuzukachou
Suzuka City, Mie Prefecture 513-0818 (Japan)
E-Mail hideki.k.722@gmail.com

extremely rare, with only 14 cases reported in the literature having undergone surgical evacuation for spinal lesions [2–12]. This surgical video case report demonstrates a patient suffering from simultaneous spinal and intracranial CSDH.

Case Description

History and Examination

A 67-year-old man visited the emergency department of our hospital because of nausea, headache and neck pain after diving into a river 2 weeks before. No abnormal neurological findings were present except for nausea, headache and neck pain. He had never taken antithrombotic medication or undergone lumbar puncture. Blood examination showed no bleeding tendency.

Neuroimaging and Hospital Course

On the day of admission, magnetic resonance imaging (MRI) showed bilateral intracranial subdural hematoma (fig. 1). On the same day, we performed bilateral craniotomy and the hematoma was evacuated. On day 4 after admission, the patient complained of sensory disturbance on his buttocks, and physical examination showed saddle anesthesia without other neurological abnormality, including bladder and rectal malfunction. On day 5, lumbar MRI demonstrated iso-signal intensity on T2-weighted imaging of a lesion similar to the intracranial subdural hematoma (fig. 2). On day 12, computed tomography (CT) with myelography demonstrated that the subdural hematoma extended from L4 to S1 (fig. 3). There was no communication between the lesion and the cerebrospinal cavity. The lesion effaced the thecal sac from L4 to S1. Cerebrospinal fluid examination showed hyperproteinorrhachia without blood contamination.

Surgical Treatment for Spinal Subdural Hematoma

On day 15 (27 days after he had dived), we performed L5 laminectomy and evacuated the subdural hematoma. It was liquid-like, similar to the intracranial CSDH. The hematoma flowed out followed by cerebrospinal fluid (video; see supplementary material at www.karger.com/doi/10.1159/000445709). We carefully inspected the inside of the dural sac, but could not find an apparent outer membrane, which is usually observed in intracranial CSDH. Neither abnormal vessels nor tumors were found. Finally the dura mater was closed.

After the operation, the patient's symptoms improved and lumbar MRI showed no acute recurrence. On day 38, he was discharged without neurological deficits. During 6-month follow-up no recurrence was observed.

Discussion

Spinal CSDH is a rare entity related to various causes [1]; most frequently it is spontaneous or related to minor trauma. In our case, there was no apparent direct impact other than diving into a river of several meters depth.

In the spinal subdural space, there are few vessels except that perforating the dura mater surrounding the neural root and the artery of Adamkiewicz found at the level of the thoracolumbar region. This may be the reason for the rarity of spinal subdural hematoma. Rader [13] described spinal subdural hematoma not caused by direct tearing of the bridging

veins, but by a rapid increase in the intravascular pressure of the lateral spinal arteries and veins.

On the other hand, Haines et al. [14] reported that there is no evidence of the subdural cavity as a natural state, but that the cavity originates from tearing of the dura-arachnoid junction, the so-called dural border cell layer. Through exposure to trauma or a disease process, fluids such as blood or cerebrospinal fluid will collect in the meninges. The pulsation of the cerebrospinal fluid may accelerate accumulations of blood by the ‘water hammer like effect’. If this theory is the correct, the pathogenesis of spinal CSDH may be the same as that of intracranial lesions.

Some investigators demonstrated that spinal subdural hematoma might be caused by migration of the intracranial subdural blood [3]. Kokubo et al. [15] evaluated cases of intracranial CSDH by lumbar MRI, and only two cases presented with concomitant spinal subdural hematoma. They concluded that hematoma migration from the intracranial to the lumbar space was not possible.

In our case, MRI findings were similar for both the intracranial and the spinal lesion, and these findings mean that both hematomas occurred simultaneously. CT with myelography showed that the lesion did not move or communicate with the cerebrospinal space. These findings indicate the existence of an arachnoid membrane between the hematoma and the cerebrospinal space. During operation, after the incision of the dura mater, the hematoma flowed out immediately, followed by cerebrospinal fluid. These series of findings also indicate incision of the arachnoid membrane just after dural incision. The absence of a visible outer membrane could be the result of insufficient time to develop. The time needed for the development of the outer membrane of CSDH is still unclear, and it is possible that there is a difference in the speed of development between intracranial and spinal lesions.

Conclusion

We experienced a very rare case of simultaneous spinal and intracranial CSDH successfully treated by craniotomy and laminectomy.

Statement of Ethics

The authors have no ethical conflicts to disclose.

Disclosure Statement

The authors declare that they have no conflicts of interest to disclose.

References

- 1 Abila AA, Oh MY: Spinal chronic subdural hematoma. *Neurosurg Clin N Am* 2000;11:465–471.
- 2 Chen HJ, Liang CL, Lu K, Liliang PC, Tsai YD: Cauda equina syndrome caused by delayed traumatic spinal subdural haematoma. *Injury* 2001;32:505–507.
- 3 Bortolotti C, Wang H, Fraser K, Lanzino G: Subacute spinal subdural hematoma after spontaneous resolution of cranial subdural hematoma: causal relationship or coincidence? Case report. *J Neurosurg* 2004;100(4 Suppl Spine):372–374.

- 4 Sari A, Sert B, Dinc H, Kuzeyli K: Subacute spinal subdural hematoma associated with intracranial subdural hematoma. *J Neuroradiol* 2006;33:67–69.
- 5 Moscovici S, Paldor I, Ramirez de-Noriega F, Itshayek E, Shoshan Y, Spektor S, Attia M: Do cranial subdural hematomas migrate to the lumbar spine? *J Clin Neurosci* 2011;18:563–565.
- 6 Kirsch EC, Khangure MS, Holthouse D, McAuliffe W: Acute spontaneous spinal subdural haematoma: MRI features. *Neuroradiology* 2000;42:586–590.
- 7 Jimbo H, Asamoto S, Mitsuyama T, Hatayama K, Iwasaki Y, Fukui Y: Spinal chronic subdural hematoma in association with anticoagulant therapy: a case report and literature review. *Spine (Phila Pa 1976)* 2006;31:E184–E187.
- 8 Lee JI, Hong SC: Spinal subdural haematoma as a complication of cranial surgery. *Acta Neurochir (Wien)* 2003;145:411–414; discussion 414–415.
- 9 Yang MS, Tung YW, Yang TH, Chai JW, Chen CC, Chan SW, Tu CW: Spontaneous spinal and intracranial subdural hematoma. *J Formos Med Assoc* 2009;108:258–261.
- 10 Liu J, Wu B, Feng H, You C: Spinal subdural hematoma following cranial surgery: a case report and review of the literature. *Neurol India* 2011;59:281–284.
- 11 Ohta H, Ottomo M, Nakamura T: A case of the spinal subdural hematoma formation following ventriculoperitoneal shunting for von Recklinghausen's disease associated with aqueductal stenosis (in Japanese). *No Shinkei Geka* 2001;29:53–57.
- 12 Cui Z, Zhong Z, Wang B, Sun Q, Zhong C, Bian L: Coexistence of spontaneous spinal and undiagnosed cranial subdural hematomas. *J Craniofac Surg* 2015;26:e118–e119.
- 13 Rader JP: Chronic subdural hematoma of the spinal cord: report of a case. *N Engl J Med* 1955;253:374–376.
- 14 Haines DE, Harkey HL, al-Mefty O: The 'subdural' space: a new look at an outdated concept. *Neurosurgery* 1993;32:111–120.
- 15 Kokubo R, Kim K, Mishina M, Isu T, Kobayashi S, Yoshida D, Morita A: Prospective assessment of concomitant lumbar and chronic subdural hematoma: is migration from the intracranial space involved in their manifestation? *J Neurosurg Spine* 2014;20:157–163.

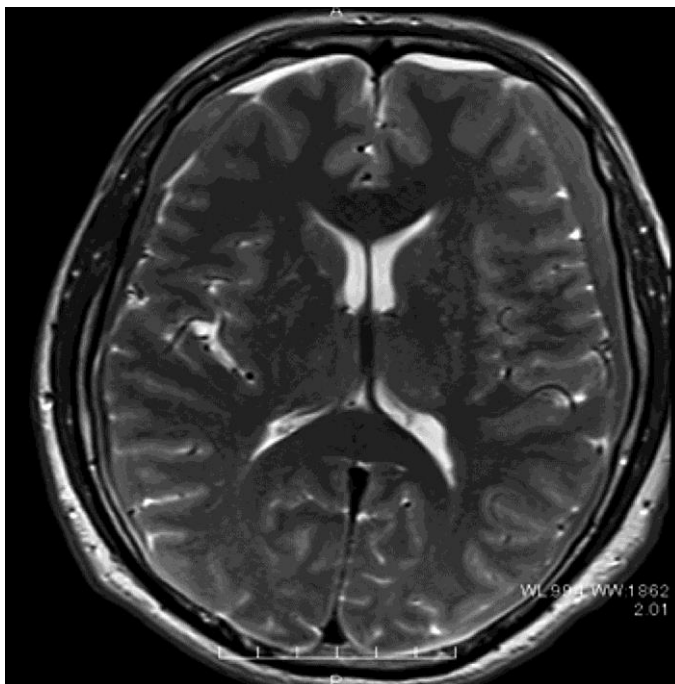


Fig. 1. Preoperative MRI (T2-weighted imaging) showed bilateral iso-signal intensity of the lesions.

Kanamaru et al.: Simultaneous Spinal and Intracranial Chronic Subdural Hematoma Cured by Craniotomy and Laminectomy: A Video Case Report



Fig. 2. Lumbar MRI (T2-weighted imaging) showing iso-signal intensity of the lesion similar to that of the intracranial subdural hematoma.

Kanamaru et al.: Simultaneous Spinal and Intracranial Chronic Subdural Hematoma Cured by Craniotomy and Laminectomy: A Video Case Report



Fig. 3. CT with myelography showed that the lesion effaced the thecal sac; there was no communication with the cerebrospinal cavity.