



University of Dundee

Fiscal policy and the composition of private consumption: some evidence from the U.S. and Canada

Malley, Jim; Molana, Hassan

Publication date:
2000

[Link to publication in Discovery Research Portal](#)

Citation for published version (APA):

Malley, J., & Molana, H. (2000). Fiscal policy and the composition of private consumption: some evidence from the U.S. and Canada. (Dundee Discussion Papers in Economics; No. 113). University of Dundee.

General rights

Copyright and moral rights for the publications made accessible in Discovery Research Portal are retained by the authors and/or other copyright owners and it is a condition of accessing publications that users recognise and abide by the legal requirements associated with these rights.

- Users may download and print one copy of any publication from Discovery Research Portal for the purpose of private study or research.
- You may not further distribute the material or use it for any profit-making activity or commercial gain.
- You may freely distribute the URL identifying the publication in the public portal.

Take down policy

If you believe that this document breaches copyright please contact us providing details, and we will remove access to the work immediately and investigate your claim.



University
of
Dundee

Dundee Discussion Papers in Economics

Fiscal Policy And The Composition Of Private
Consumption: Some Evidence From The U.S.
And Canada

Jim Malley

and

Hassan Molana

Department of
Economic Studies,
University of Dundee,
Dundee.
DD1 4HN

Working Paper
No. 113
December 2000
ISSN:1473- 236X

Fiscal Policy and the Composition of Private Consumption:
Some Evidence from the U.S. and Canada

Jim Malley
University of Glasgow

And

Hassan Molana
University of Dundee

July 1999

Abstract:

This paper develops a generalised version of the life-cycle model in which consumers' preferences are defined over components of consumption and are affected by the level of public expenditure on goods and services. The model implies that the crowding out of private consumption could in fact be a direct demand side phenomenon caused by the way preferences respond to a change in public spending. Evidence from U.S. and Canadian data for the period 1935-1995 confirms this theoretical conjecture as well as implying that in both countries demand for durable goods is likely to show relatively large swings which may undermine the stability of the sector and harm the supply side.

Keywords:

intra-temporal marginal rate of substitution; Edgeworth complement or substitute; cointegration; error correction

JEL Classification: E22, E62

Acknowledgements:

The authors would like to thank Julia Darby, Søren Neilsen, Apostolis Philippopolous, Lee Redding, Ulrich Woitek, and participants in EPRU (Copenhagen Business School) and the ESEM98 (Berlin) for their helpful comments on earlier drafts of this paper. The usual disclaimer applies.

Introduction

The importance of quantifying the response of consumers' expenditure on goods and services to a change in public expenditure has motivated many attempts by economists to specify the relationship between public and private consumption. In most cases, however, these attempts are focused on measuring the overall impact of a public expansion – and its financing - on private consumption¹ and very little effort is made to unravel the reallocative effects which amount to a change in the composition of private consumption. It is nevertheless important for policy makers to have some measure of the way in which fiscal policy affects the level of private expenditure on goods and services as well as knowing whether or not it changes the composition of various categories of expenditure. The relevance of the latter becomes even clearer if we note the extreme case in which aggregate private consumption remains unaffected by a change in public consumption because the changes in components of private consumption cancel out. In this case, the conclusion about the impact of the policy will have to be confined to its redistributive effects. Because such a reallocation in demand for goods and services is likely to have severe consequences for the level of output and employment at the micro/industry level, policy makers should be made aware of them *a priori*.

In this paper we attempt to quantify the way in which major components of aggregate consumption, that is durable and nondurable goods and services consumption, respond to a change in public spending. The theoretical relationship is derived by solving a life-cycle utility maximisation model in which consumers' preferences are defined over components of consumption as well as being affected by the level of public expenditure. We use this framework to illustrate that the crowding out of private consumption could in fact be a direct demand side phenomenon caused by the way preferences respond to a change in public spending. The model is then estimated using the time series data for the U.S.A and Canada and

simulations, based on a shock to public spending, are used to calculate how each component is affected. The results show that in both countries the response of durable consumption is very different from the way consumers' expenditure on nondurable goods and services reacts to the shock. They also show that there is a remarkable difference in the way the private sector in the two countries reacts to a fiscal shock.

The rest of the paper is divided into three sections. Section 1 outlines the theory. In Section 2 we present and discuss the evidence for the U.S.A and Canada respectively. Section 3 concludes the paper.

1. Theory

The theoretical framework used in this paper is similar to what is now known as the "consolidated life-cycle approach" which is a formalisation of the approach adopted by earlier studies of the Ricardian Neutrality hypothesis². The representative consumer's life-time utility is given by a time separable function,

$$U_t = \sum_{j=0}^{\infty} (1 + \theta)^{-j} u(C_{t+j}, S_{t+j}; G_{t+j}), \quad (1)$$

where θ is the subjective rate of time preference and $u(C, S; G)$ denotes a well behaved function summarising how preferences are (i) defined over consumption of nondurable goods and services and the services from durable goods, C and S , and (ii) affected by the level of public spending on goods and services, G . The constraints facing the consumer are

$$W_{t+j} = (1 + r_{t+j})W_{t+j-1} + (X_{t+j} - T_{t+j}) - (q_{c,t+j}C_{t+j} + q_{d,t+j}D_{t+j}), \quad (2)$$

$$S_{t+j} = (1 - \delta_{t+j})S_{t+j-1} + D_{t+j}, \quad (3)$$

$$B_{t+j} = (1 + r_{t+j})B_{t+j-1} + (q_{g,t+j}G_{t+j} - T_{t+j}), \quad (4)$$

and

$$W_{t+j} = A_{t+j} + B_{t+j}. \quad (5)$$

Equation (2) is consumers' intertemporal budget constraint which shows how financial wealth W evolves; X is income from employment, T is net transfers from the private to the public sector, and C and D denote expenditure on non-durable goods and services and durable goods respectively. All variables are measured in real terms using the income deflator, P and q_c and q_d are the relative prices of C and D , defined as follows

$$q_{c,t+j} = P_{c,t+j} / P_{t+j}, \quad (6)$$

$$q_{d,t+j} = P_{d,t+j} / P_{t+j}, \quad (7)$$

and r is the real interest rate which is related to the nominal interest rate, n , as follows

$$1 + r_{t+j} = (1 + n_{t+j}) / (1 + \dot{p}_{t+j}), \quad (8)$$

where

$$1 + \dot{p}_{c,t+j} = P_{t+j} / P_{t+j-1}. \quad (9)$$

Equation (3) explains the accumulation of stock of durable goods S with a physical depreciation rate δ . Note that we assume that the value of services from durable goods is proportional to their stock and hence do not distinguish between S in the utility function in (1) and the constraint in (3).

Equation (4) is the public sector's intertemporal budget constraint showing how the stock of public debt, B , evolves; G is public expenditure and q_g is its relative price, i.e.

$$q_{g,t+j} = P_{g,t+j} / P_{t+j}. \quad (10)$$

Finally, equation (5) gives the decomposition of private financial wealth into private and public assets and bonds. Equations (2)-(5) can be combined to give the consolidated budget constraint which shows the evolution of private sector's net total wealth

$$A_{t+j} + q_{d,t+j}S_{t+j} = (I + r_{t+j})A_{t+j-1} + (I - \delta_{t+j})q_{d,t+j-1}S_{t+j-1} + X_{t+j} - q_{c,t+j}C_{t+j} - q_{g,t+j}G_{t+j}. \quad (11)$$

The first order conditions for choosing the path of C and S which maximise the expected value of (1) subject to (11) are given below and hold for $j \geq 0$, where E_t is the mathematical expectations operator (conditional on the information set available at t) and λ is the Lagrange multiplier.

$$E_t \left(\frac{\partial U_t}{\partial C_{t+j}} - \lambda_{t+j} q_{c,t+j} \right) = 0, \quad (12)$$

$$E_t \left(\frac{\partial U_t}{\partial S_{t+j}} - \lambda_{t+j} q_{d,t+j} + \lambda_{t+j+1} (I - \delta_{t+j+1}) q_{d,t+j+1} \right) = 0, \quad (13)$$

and

$$E_t (\lambda_{t+j} - \lambda_{t+j+1} (I + r_{t+j+1})) = 0. \quad (14)$$

The consolidated approach mentioned above focuses on estimating the intertemporal path of consumption which can be derived as a closed form solution to equations (11)-(14) and an explicit functional form for the utility function, $u(C, S; G)$. In this paper we concentrate on estimating the intra-temporal marginal rate of substitution between C and S which we obtain from (12)-(14), that is

$$\frac{\frac{\partial u(C_t, S_t; G_t)}{\partial S_t}}{\frac{\partial u(C_t, S_t; G_t)}{\partial C_t}} = \left(\frac{q_{d,t}}{q_{c,t}} \right) \cdot \left(I + E_t \left(\frac{(I - \delta_{t+j+1})(I + \dot{q}_{d,t+1})}{I + r_{t+1}} \right) \right). \quad (15)$$

Equation (15) is a modified version of the conventional definition which equates the marginal rate substitution with the relative price, where the modification is due to the opportunity cost associated with durable goods and is captured by the ratio in the second

brackets on the right-hand-side of (15). By replacing $u(C,S;G)$ with a specific utility function, (15) will give us an equilibrium relationship between C , S , G , and the modified relative price factor. We assume

$$u(C,S;G) = (1/\sigma) \left[(1/\gamma)(G^{1-a}C^a)^\gamma + (1/\phi)(G^{1-b}S^b)^\phi \right]^\sigma \quad (16)$$

which is a sufficiently general approximation of the consumer's preferences where a, b, γ, ϕ and σ are constant parameters with standard interpretations; $0 < a < 1$, $0 < b < 1$, $\gamma < 1$, $\phi < 1$, $\sigma \leq 1$, and preferences are separable in C and S if $\sigma = 1$. Also, γ and ϕ allow for the possibility of G being an *Edgeworth complement* or *substitute* with respect to C and/or S in the relevant subutilities³. Using (16) to substitute for the expression on the right-hand-side of (15), we obtain

$$(b/a)(S_t^{-(1-\phi b)})(C_t^{(1-\gamma a)})(G_t^{\phi(1-b)-\gamma(1-a)}) = \left(\frac{q_{d,t}}{q_{c,t}} \right) \cdot \left(I + E_t \left(\frac{(1-\delta_{t+j+1})(1+\dot{q}_{d,t+1})}{I+r_{t+1}} \right) \right)$$

which in logarithmic form may be approximated as follows

$$\beta_0 + \beta_1 \ln S_t + \beta_2 \ln C_t + \beta_3 \ln G_t + \beta_4 \ln Z_t = v_t \quad (17)$$

where $\beta_0 = \ln(b/a)$; $\beta_1 = -(1-\phi b)$; $\beta_2 = 1-\gamma a$; $\beta_3 = \phi(1-b)-\gamma(1-a)$; $\beta_4 = -1$, v_t

is a general disturbance term capturing all omissions and approximation and

$$Z_t = \left(\frac{q_{d,t}}{q_{c,t}} \right) \cdot \left(I + \left(\frac{(1-\delta_{t+j+1})(1+\dot{q}_{d,t+1})}{I+r_{t+1}} \right) \right). \quad (18)$$

In our empirical investigation in the next section we (i) apply co-integration tests to examine whether equation (17) can be supported as a long-run equilibrium relationship, and (ii) use this information to estimate equations which describe the evolution of C and S and the way they are affected by G . These equations are then simulated to give the effect of a shock to

public spending on durable and non-durable consumption by private sector. We conclude this section by using the theory developed above to anticipate the effect of a rise in G on C and S .

1.1 Effect of a rise in public spending on the composition of private consumption

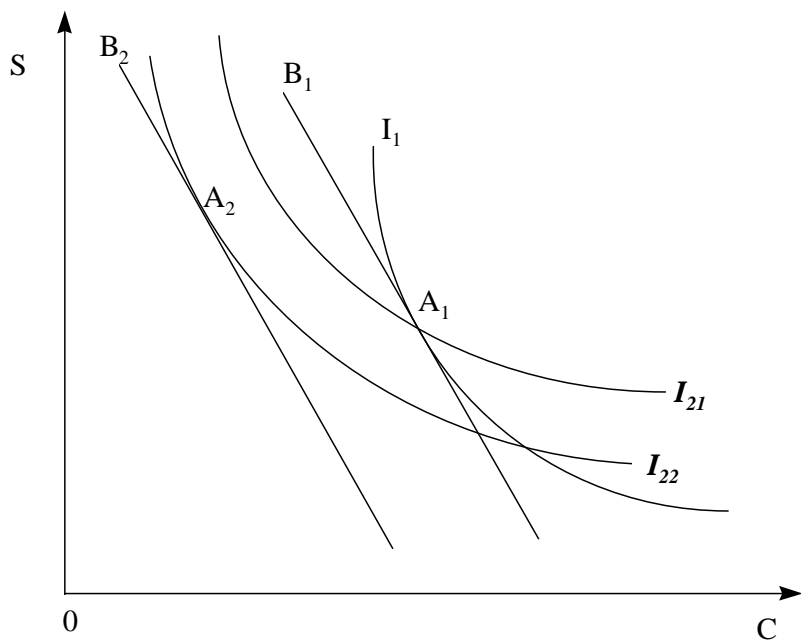
The above framework can be used to construct a diagram, which explains how a change in public consumption affects durable and non-durable private consumption. In *Figure 1*, I_1 and B_1 show an indifference curve and a budget line in (S, C) space. These are drawn for given values of $(B, G, T, A, r, q_g, q_c, q_d, \delta)$ and are associated with the instantaneous utility function $u(C, S; G)$ in (1) and the budget constraint in (11) which in a stationary state equilibrium is given by

$$\delta q_d S = (rA + X - q_g G) - q_c C. \quad (19)$$

The tangency point between the budget constraint and the indifference curve, denoted by A_1 , depicts an initial equilibrium position. We are interested in finding how a rise in G changes the location of this equilibrium point. Given that $du = u'_c dC + u'_s dS + u'_g dG$, where all partial derivatives (u'_c, u'_s, u'_g) are positive, a rise in G will imply that an indifference curve passing through point A_1 will now be associated with a higher utility level relative to I_1 . In addition, because the marginal utilities (u'_c, u'_s) depend on the level of G , a rise in the latter will also affect the marginal rate of substitution between C and S . As a result, the indifference curves will rotate clockwise (anti-clockwise) if an increase in G leads to a rise (fall) in (u'_c / u'_s) . Thus, allowing G to rise and letting $\partial(u'_c / u'_s) / \partial G < 0$, the consumer's position before adjusting C and S may be represented at point A_1 on the flatter indifference curve, labelled I_{21} in Figure 1. Since I_{21} is now associated with a higher utility level, the consumer may be compensated by shifting to a lower indifference curve, say I_{22} . Note, however, that this compensation may be achieved by moving to I_{22} in three different ways: either (i) reduce C and

raise S ; or (ii) reduce S and raise C ; or indeed (iii) reduce both C and S . It is nevertheless easy to verify that given the restriction imposed by the budget constraint, in this case the consumer is likely to choose option (i) as long as the relative price ($q_c / \delta q_d$) does not change drastically. This can be seen by noting that the effect of a change in G and its accompanying budgetary implications on the budget constraint in (12) is likely to be a leftward shift in the latter. In Figure 1 the new position of the budget line is shown by B_2 and the rise in G shifts the equilibrium point from A_1 to A_2 , hence reducing non-durable consumption and increasing the consumption of durables. We conclude by noting that the opposite result will follow if $\partial(u'_c / u'_s) / \partial G > 0$, since in this case a rise in G will raise the marginal rate of substitution between S and C hence the indifference curves will rotate clockwise.

Figure 1. Effect of a Rise in G on C and S when $\partial(u'_c / u'_s) / \partial G < 0$



2. Empirical evidence from the U.S.A and Canada

In this section U.S. and Canadian time series data are employed to quantify the effect of a fiscal expansion on components of private consumption as described by the theory developed above. All series are per capita, whenever relevant, with annual frequency from 1935-1996 (see the appendix for sources and definitions).

2.1 Time series properties of the series

Tables 1 and 2 summarise the results of units root tests which identify the degree of nonstationarity inherent in the relevant series, that is $\ln C$, $\ln S$, $\ln G$ and $\ln Z$, the sample behaviour of which are depicted in Figure 2 below.

Figure 2. U.S. and Canadian Series (1935-1995)

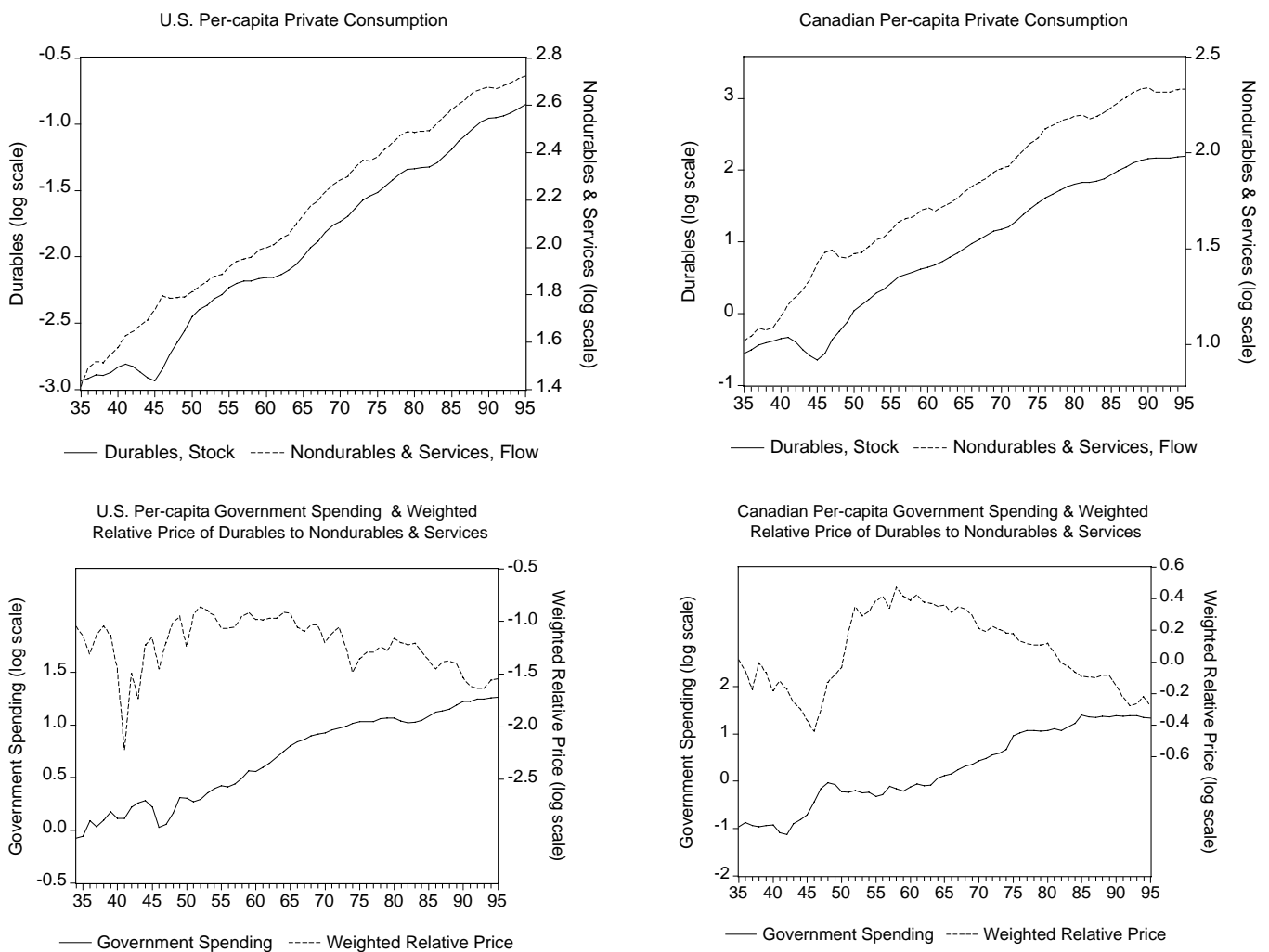


Table 1. Unit Root Tests for the U.S. Series

	Levels				First Differences			
	based on a regression including a constant		Based on a regression including a constant and a time trend		based on a regression including a constant		based on a regression including a constant and a time trend	
	τ	z	τ	z	τ	z	τ	z
<i>lnS</i>	0.409 (0.997)	-0.088 (0.951)	-0.727 (0.988)	-3.934 (0.011)	-3.985 (0.000)	-3.983 (0.001)	-4.062 (0.004)	-3.963 (0.053)
<i>lnC</i>	1.356 (0.999)	-1.499 (0.534)	-0.869 (0.982)	-1.351 (0.875)	-5.228 (0.000)	-6.269 (0.000)	-5.769 (0.000)	-6.411 (0.000)
<i>lnG</i>	1.127 (0.999)	-1.216 (0.667)	-1.909 (0.708)	-1.683 (0.758)	-6.838 (0.000)	-7.002 (0.000)	-6.898 (0.000)	-6.935 (0.000)
<i>lnZ</i>	-2.367 (0.0726)	-2.121 (0.236)	-3.179 (0.515)	-3.650 (0.026)	-7.037 (0.000)	-6.983 (0.000)	-7.036 (0.000)	-6.931 (0.000)

- 1- z is the Dickey-Fuller (1979, 1981) test statistic for the existence of a unit root. τ is the Weighted Symmetric test statistic proposed by Pantula *et al* (1994). They show that τ dominates z in terms of power.
- 2- The *AIC* (see Akaike, 1973) was used to choose the optimal lag length which was found to be two years. Pantula *et al.* argue that the *AIC* avoids size distortions for both the τ and z tests.
- 3- Numbers in parentheses are the p-values (see, MacKinnon, 1994).
- 4- All above tests results were also supported by the test statistics proposed by Phillips and Perron (1988).

Table 2. Unit Root Tests for the Canadian Series

	Levels				First Differences			
	based on a regression including a constant		Based on a regression including a constant and a time trend		based on a regression including a constant		based on a regression including a constant and a time trend	
	τ	z	τ	z	τ	z	τ	z
<i>lnS</i>	0.303 (0.996)	-0.793 (0.821)	-0.389 (0.995)	-2.381 (0.390)	-3.906 (0.000)	-3.723 (0.003)	-3.918 (0.006)	-3.694 (0.006)
<i>lnC</i>	-0.276 (0.976)	-1.133 (0.701)	-2.789 (0.149)	-2.759 (0.212)	-5.221 (0.000)	-5.104 (0.000)	-5.238 (0.000)	-5.058 (0.000)
<i>lnG</i>	-0.347 (0.988)	-1.191 (0.746)	-2.098 (0.579)	-2.222 (0.478)	-5.349 (0.000)	-5.184 (0.000)	-5.370 (0.000)	-5.160 (0.000)
<i>lnZ</i>	-1.205 (0.716)	0.778 (0.825)	-1.231 (0.948)	-0.756 (0.969)	-5.209 (0.000)	-5.402 (0.000)	-5.414 (0.000)	-5.806 (0.000)

See notes to Table 1.

Based on the evidence reported in Tables 1 and 2, it is quite clear that lnS_t , lnC_t and lnG_t contain a unit root and ΔlnS_t , ΔlnC_t and ΔlnG_t are stationary, where Δ is the first difference operator. However, while for Canada lnZ_t contains a unit root and ΔlnZ_t is stationary, we cannot reject the hypothesis that for the U.S. lnZ_t is stationary around a linear deterministic trend⁴. Informed by these results, we proceed to examine the cointegration properties of the vector given by (17), i.e. $(lnS_t, lnC_t, lnG_t, lnZ_t)$. We base our tests on a generalised version of Johansen's *Trace* and *Maximal Eigenvalue* test statistics calculated by estimating a VAR

system in which $(\ln S_t, \ln C_t)$ are endogenous and $(\ln G_t, \ln Z_t)$ are treated as forcing variables⁵. As a result, for each country we may expect to find a maximum of two cointegrating relationships. The results of the tests for the U.S. and Canada are given in Tables 3 and 4 below.

Table 3. Cointegration Tests for the U.S.

<i>Maximal Eigenvalue Test</i>					<i>Trace Test</i>				
H_0	H_1	<i>Statistic Value</i>	<i>95% C.V.</i>	<i>90% C.V.</i>	H_0	H_1	<i>Statistic Value</i>	<i>95% C.V.</i>	<i>90% C.V.</i>
$\rho=0$	$\rho=1$	25.83	18.06	15.98	$\rho=0$	$\rho=1$	30.83	23.32	20.75
$\rho \leq 1$	$\rho=2$	4.439	11.47	9.53	$\rho \leq 1$	$\rho=2$	4.44	11.47	9.53

1. H_0 and H_1 are the null and the alternative hypotheses and ρ is the rank of the Π matrix in Johansen's Transformation of the VAR system.
2. Tests are based on an unrestricted VAR(2) system with unrestricted intercepts and no deterministic trend. The AIC was used to choose the optimal lag length and the omission of a time trend was supported statistically. The VAR system consisted of two equations for $\ln S_t$ and $\ln C_t$ which included $\ln G_t$ as a forcing $I(1)$ variable and detrended $\ln Z_t$ as a forcing $I(0)$ variable. Critical values in both Tables 3 and 4 are from Pesaran, *et al.* (1996).

Table 4. Cointegration Tests for Canada

<i>Maximal Eigenvalue Test</i>					<i>Trace Test</i>				
H_0	H_1	<i>Statistic Value</i>	<i>95% C.V.</i>	<i>90% C.V.</i>	H_0	H_1	<i>Statistic Value</i>	<i>95% C.V.</i>	<i>90% C.V.</i>
$\rho=0$	$\rho=1$	21.52	18.06	15.98	$\rho=0$	$\rho=1$	26.22	23.32	20.75
$\rho \leq 1$	$\rho=2$	4.70	11.47	9.53	$\rho \leq 1$	$\rho=2$	4.70	11.47	9.53

See note 1 in Table 3. Tests are based on an unrestricted VAR(2) system with unrestricted intercepts and no deterministic trend. The AIC was used to choose the optimal lag length and the omission of a time trend was supported statistically. The VAR system consisted of two equations for $\ln S_t$ and $\ln C_t$ which included $\ln G_t$ as a forcing $I(1)$ variable and $\Delta \ln Z_t$ as a forcing $I(0)$ variable. Note that this specification was found to be statistically superior to the one which included $\ln Z_t$ as a forcing $I(1)$ variable. For example, a test of the overidentifying restriction that $\ln Z_t$ should be excluded from the cointegrating vector could not be rejected, $\chi^2(1)=0.88$.

Given the results of cointegration tests reported in Tables 3 and 4, it is clear that both U.S. and Canadian series support the existence of a unique cointegrating vector. This hypothesis was further supported by the commonly used Information Criteria which are reported in Table 5 below. Finally Table 6 gives the maximum likelihood estimates of the normalised cointegrating vectors for the U.S. and Canada.

Table 5. Information Criteria for VAR(2) Specification with Rank Restrictions

U.S.A					CANADA				
<i>Rank</i>	<i>L</i>	<i>AIC</i>	<i>SBC</i>	<i>HQC</i>	<i>Rank</i>	<i>L</i>	<i>AIC</i>	<i>SBC</i>	<i>HQC</i>
$\rho=0$	332.3	322.3	311.8	318.2	$\rho=0$	288.8	276.8	264.2	271.9
$\rho=1$	345.2	331.2	316.5	325.5	$\rho=1$	299.6	283.6	266.8	277.0
$\rho=2$	347.4	331.4	314.7	324.9	$\rho=2$	301.9	283.9	265.0	276.6

ρ is the rank of the Π matrix in Johansen's Transformation of the VAR system.

L: maximum log-likelihood; *AIC*: Akaike (1973) Information Criterion; *SBC*: Schwarz (1978) Information Criterion; and *HQC*: Hannan-Quinn (1979) Criterion.

Table 6. Estimates of the Normalised Cointegration Vectors

U.S.A			Canada		
<i>Variable</i>	<i>Coefficient</i>	<i>S.E</i>	<i>Variable</i>	<i>Coefficient</i>	<i>S.E</i>
$\ln S_t$	1	--	$\ln S_t$	1	--
$\ln C_t$	-3.055	0.565	$\ln C_t$	-1.482	0.382
$\ln G_t$	1.144	0.496	$\ln G_t$	-0.384	0.189

S.E. is the asymptotic standard error calculated from the estimated variance covariance matrix. Note that as explained above $\ln Z_t$ does not appear in the cointegration relationship.

2.2 Estimating the paths of S and C

The above results suggest that the unrestricted VAR(2) specifications for $\ln S$ and $\ln C$ can be restricted according to an error-correction specification. We therefore approximate the paths of C and S by the following regression equations⁶

$$\Delta \ln S_t = b_{s0} + b_{s1} \Delta \ln S_{t-1} + b_{s2} \Delta \ln C_{t-1} + b_{s3} \Delta \ln G_{t-1} + b_{s4} \Delta \ln Z_{t-1} + b_{s5} ECM_{t-1} + \varepsilon_{st} \quad (20)$$

and

$$\Delta \ln C_t = b_{c0} + b_{c1} \Delta \ln S_{t-1} + b_{c2} \Delta \ln C_{t-1} + b_{c3} \Delta \ln G_{t-1} + b_{c4} \Delta \ln Z_{t-1} + b_{c5} ECM_{t-1} + \varepsilon_{ct} \quad (21)$$

where *ECM* is the error-correction term which is approximated by the residuals from the respective cointegration relationships reported in Table 6. Estimates of equations (20) and (21) for the U.S. and Canada are reported in Tables 7 and 8, respectively. In each case, column (I) gives estimates of the general specification and column (II) provides estimates of the restricted or parsimonious version, which omits the insignificant regressors. The relevant test statistics are also reported in these Tables which show that the estimates in column (II) are empirically robust and can be used to examine the impact of a change in G on C and S by means of

simulation analysis. However, before discussing the results of our simulation exercise, it is worth noting that the estimates in column (II) are simple generalisations of the *Rational Expectations* model of the consumption proposed by Hall (1978), whose implications may be summarised as follows:

- (a) In both countries, the past deviations from the equilibrium level of marginal rate of substitution, captured by the *ECM* term, affect the path of both *C* and *S*.
- (b) In both countries, the effect of fiscal policy on the path of *C* and *S* seems to be restricted to the way *G* appears in the *ECM* term only. This is because (i) additional terms in past *G* were insignificant when added as regressors, and (ii) changes in lags of real disposable income and the interest rate were insignificant when added to the final equation (the test statistic for this hypothesis is T_7 in Tables 7 and 8).
- (c) In both countries, $\Delta \ln S$ exhibits a significant degree of persistence which is captured by an autoregressive pattern.
- (d) Changes in the relative price only affects the path of *S* in the U.S. and has no effect on the path of *C* in either country.
- (e) In Canada, $\Delta \ln C$ exhibits a significant degree of persistence which is captured by an autoregressive pattern, but as expected, the autoregressive coefficient of $\Delta \ln C$ is considerably lower than the one corresponding to $\Delta \ln S$.
- (f) In the U.S., $\Delta \ln C$ does not show any persistence above that captured implicitly by the *ECM* term.

**Table 7. Estimates of Equations (20) and (21) for the U.S.A
Annual Series for Period 1936-1995**

Durable Consumption Dependent Variable $\Delta \ln S_t$			Non-Durable Consumption Dependent Variable $\Delta \ln C_t$		
<i>Regressor</i>	(I)	(II)	<i>Regressor</i>	(I)	(II)
$\Delta \ln S_{t-1}$	0.564 (6.58)	0.594 (7.06)	$\Delta \ln S_{t-1}$	-0.126 (1.99)	--
$\Delta \ln C_{t-1}$	0.211 (1.31)	--	$\Delta \ln C_{t-1}$	0.026 (2.20)	--
$\Delta \ln G_{t-1}$	0.072 (1.22)	--	$\Delta \ln G_{t-1}$	0.021 (0.48)	--
$\Delta \ln Z_{t-1}$	-0.058 (4.03)	-0.058 (4.00)	$\Delta \ln Z_{t-1}$	-0.016 (1.50)	--
<i>ECM</i> _{t-1}	-0.055 (2.84)	-0.041 (2.44)	<i>ECM</i> _{t-1}	0.026 (1.77)	0.048 (4.76)
<i>Constant</i>	-0.416 (2.77)	-0.302 (2.35)	<i>Constant</i>	0.216 (1.94)	0.392 (5.03)

Table 7 Continued

Diagnostic Statistics			Diagnostic Statistics		
<i>Statistic</i>	(I)	(II)	<i>Statistic</i>	(I)	(II)
R^2	0.654	0.638	R^2	0.279	0.361
$S.E$	0.0189	0.0190	$S.E$	0.01404	0.1279
L	156.004	154.59	L	173.98	183.823
AIC	150.004	150.592	AIC	167.98	180.823
SBC	143.72	146.40	SBC	161.70	177.632
DW	1.857	1.837	DW	1.785	1.679
T_1	0.644	0.575	T_1	1.577	1.595
T_2	0.0115	0.0081	T_2	1.1456	0.0015
T_3	5.245	2.526	T_3	0.0835	1.815
T_4	0.667	0.803	T_4	6.339	2.253
T_5	20.47 [5, 54]	32.90 [3, 56]	T_5	4.175 [5, 54]	16.66 [2, 59]
T_6	1.301 [2, 54]	--	T_6	2.434 [4, 54]	--
T_7	--	2.527 [2, 53]	T_7		0.258 [2, 55]

- The final regression for $\Delta \ln C$ included an intercept dummy for 1946.
- $\Delta \ln Z$ is constructed using the detrended values of $\ln Z$.
- Numbers in parentheses are the t-ratios.
- L is the log-likelihood value.
- AIC and SBC are Akaike and Schwarz Information Criteria respectively.
- T_1 : Lagrange Multiplier test for 1st order autocorrelation, distributed asymptotically as $\chi^2(1)$.
- T_2 : RESET test distributed, asymptotically as $\chi^2(1)$.
- T_3 : Normality test, distributed asymptotically as $\chi^2(2)$.
- T_4 : Heteroscedasticity test, distributed asymptotically as $\chi^2(1)$.
- T_5 : F -Test for joint significance of the coefficients, $d.f.$ in square brackets.
- T_6 : F -Test for joint significance of the omitted regressors, $d.f.$ in square brackets.
- T_7 : F -Test for joint significance of the added regressors, $d.f.$ in square brackets.

**Table 8. Estimates of Equations (20) and (21) for Canada
Annual Series for Period 1936-1995**

Durable Consumption Dependent Variable $\Delta \ln S_t$			Non-Durable Consumption Dependent Variable $\Delta \ln C_t$		
<i>Regressor</i>	(I)	(II)	<i>Regressor</i>	(I)	(II)
$\Delta \ln S_{t-1}$	0.549 (4.24)	0.555 (5.45)	$\Delta \ln S_{t-1}$	-0.269 (0.34)	--
$\Delta \ln C_{t-1}$	0.291 (1.22)	--	$\Delta \ln C_{t-1}$	0.321 (2.20)	0.298 (2.22)
$\Delta \ln G_{t-1}$	0.042 (0.87)	--	$\Delta \ln G_{t-1}$	0.010 (0.34)	--
$\Delta \ln Z_{t-1}$	-0.032 (0.46)	--	$\Delta \ln Z_{t-1}$	-0.05 (1.30)	--
ECM_{t-1}	-0.104 (3.78)	-0.105 (4.59)	ECM_{t-1}	0.016 (0.97)	0.026 (2.09)
<i>Constant</i>	-0.179 (3.62)	-0.174 (4.31)	<i>Constant</i>	0.044 (1.44)	0.061 (2.59)

Table 8 Continued

Diagnostic Statistics			Diagnostic Statistics		
<i>Statistic</i>	(I)	(II)	<i>Statistic</i>	(I)	(II)
R^2	0.6981	0.680	R^2	0.3897	0.3480
$S.E$	0.0286	0.0286	$S.E$	0.01747	0.1757
L	131.85	130.11	L	161.43	159.44
AIC	124.850	126.115	AIC	154.426	155.440
SBC	117.520	121.926	SBC	147.096	151.252
DW	1.939	1.743	DW	1.582	1.743
T_1	0.0813	1.683	T_1	13.41	4.154
T_2	25.09	23.60	T_2	0.889	0.496
T_3	5.193	4.57	T_3	1.648	1.559
T_4	26.425	20.36	T_4	0.0335	0.139
T_5	20.42 [6, 53]	39.69 [3, 56]	T_5	5.641 [6, 53]	9.962 [3, 56]
T_6	1.052 [3, 53]	--	T_6	1.209 [3, 53]	--
T_7	--	0.839 [2, 53]	T_7		1.969 [2, 53]

- All regressions included an intercept dummy for the Word War II period.
- See notes in Table 7 for other details.

2.3 Effect of an exogenous shock to G on components of private consumption

We now examine how a change in G affects components of private expenditure on goods and services, that is C and D . To do so, we first need to quantify the path of Z and G as forcing variables. We assume that $\Delta Z=0$ since the univariate results indicated that it is stationary and model $\ln G$ as an $ARIMA$ process (see Table 9 below).

Table 9. Estimates of the Path of G Annual Series for Period 1936-1995

Dependent Variable $\Delta \ln G_t$

Regressors	U.S.A	CANADA
<i>Intercept</i>	0.022 (3.29)	0.024 (1.98)
$\Delta \ln G_{t-1}$	0.1863 (1.55)	0.3428 (2.75)
$\Delta \ln G_{t-2}$	-0.289 (2.41)	--
R^2	0.1155	0.1174
$S.E$	0.0443	0.0857
T_1	0.873	2.943
T_2	0.0326	0.4923

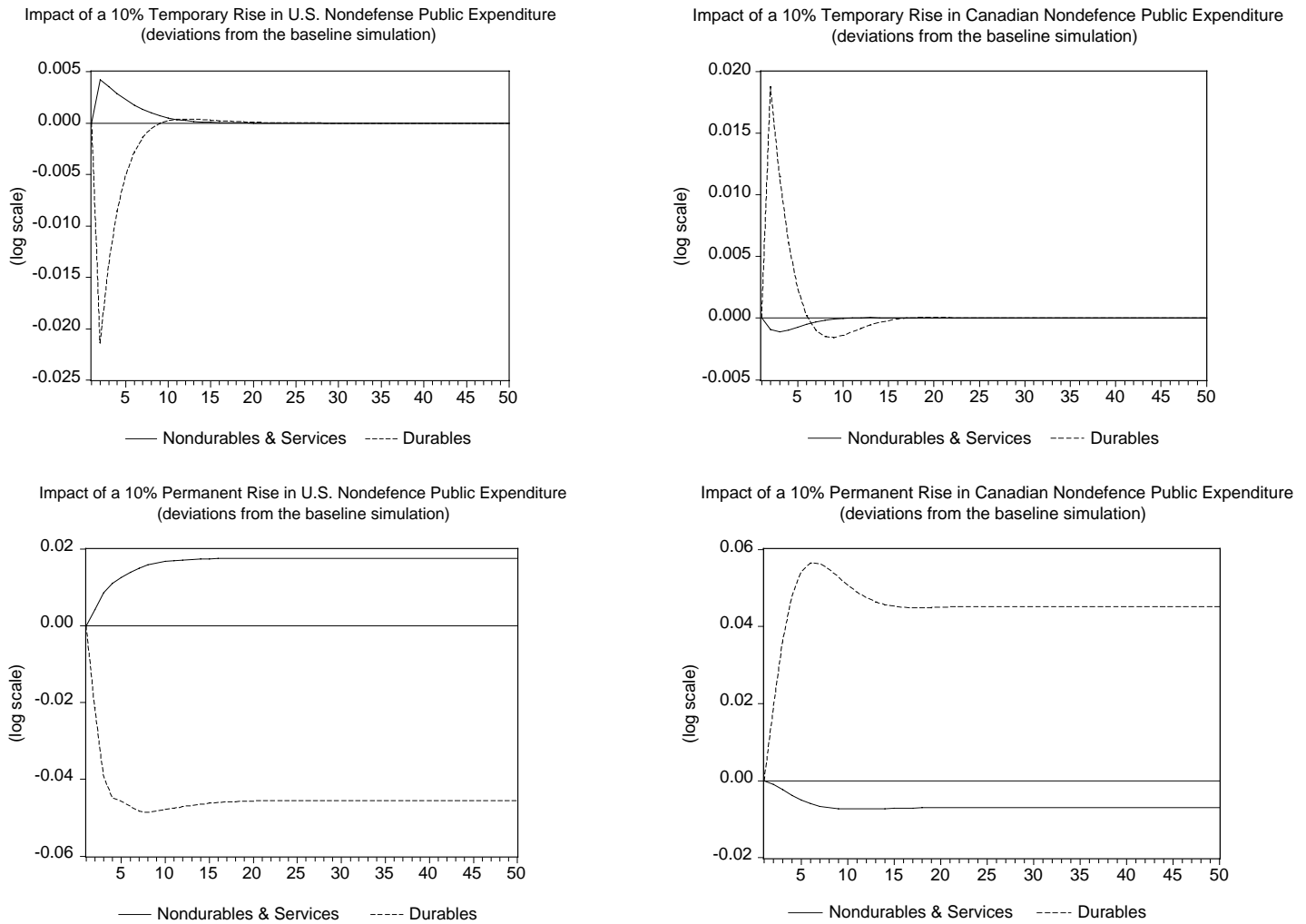
T_1 and T_2 are Lagrange Multiplier test statistics for 1st order autocorrelation and heteroscedasticity, distributed asymptotically as $\chi^2(1)$.

The simulation model for each country was defined by a system of five equations consisting of: (a) paths of C and S given in column (II) of Table 7 or 8; (b) path of G in the relevant column of Table 9; (c) definition of the error-correction term given by the following $ECM_t = \ln S_t - \theta_1 \ln C_t - \theta_2 \ln G_t$ whose coefficient estimates are reported in the relevant columns of Table 6; and (d) the stock-flow relationship in (3) explaining the physical accumulation process for S .

Our simulations consist of obtaining the forward solutions of these equations for 50 years starting from 1996. First we calculated the base simulations without any shocks to G and then we repeated the experiment with both a temporary and a permanent shock. The former consisted of a once-and-for-all change in the level of G in 1996, such that the value of G returns to its path given by the estimated equation. The permanent shock in contrast maintained this shock by allowing the rise in the 1996 value to feed into the future levels of G . The effects of the temporary and permanent shocks were then calculated by the deviation of the respective series from their corresponding base simulation. Figures 3 below illustrate the results for the U.S. and Canada respectively, which are summarised below:

- (a) These results confirm our theoretical prediction in the previous section that a shock to G has opposite effects on the main components of private consumption. As these Figures show, both the immediate and the total effects of a change in G on C and D (and hence S) go in different directions in both countries.
- (b) These results also support our conjecture that consumers' preferences have a clear role in determining which component of consumers' expenditure is crowded out. A rise in G erodes nondurable consumption and raises the accumulation of durable goods in Canada, whereas the opposite result emerges for U.S..
- (c) In general, a once-and-for-all shock seems to have more effect on durables. As a result, the sector producing durable goods is likely to experience longer and more pronounced cycles following a fiscal shock.
- (d) While nondurables response to a permanent shock to G is monotonic, durables seem to respond to this shock by overshooting their long-run value.

Figure 3. U.S. and Canadian Simulations



It is worth concluding this section by stressing the robustness of the above results. The fact that these results are obtained within a partial equilibrium framework which does not take account of the way governments' finance a rise in G may be seen as a weakness that undermines their relevance. It could be argued that our simulation results do not give the full picture since they do not allow for the paths of C and S to be affected by the budgetary implications of the rise in G . Or, put differently, our results do not capture the second round effects of a fiscal expansion on consumption that are due to the effect of disposable income and/or interest rate which are affected by the expansion and its financing. However, it appears that our model is robust to this criticism since the results reported in Tables 7 and 8 above have ruled out the

existence of significant second round effects. For example, our tests showed clearly that the information contained in changes in disposable income and interest rate did not significantly contribute to explaining the paths of C and S .

3. Summary and Conclusion

In this paper we have focused on measuring the relative effects of a fiscal shock on components of consumers' expenditure on goods and services. The theory underlying our exercise was developed in Section 1 on the basis of a generalised version of the life-cycle model (with a representative consumer and infinite horizon) in which consumers' preferences are defined over components of consumption and are affected by the level of public expenditure on goods and services. We used this model to illustrate that a rise in public spending is likely to have opposite effects on the major components of consumption (durable and nondurable consumption), hence showing that the crowding out of private consumption could in fact be a demand side phenomenon caused by the way preferences respond to a change in public spending. We also used the first order conditions for utility maximisation to derive an intra-temporal equilibrium condition which relates the marginal rate of substitution between durable and nondurable consumption to their price ratio. This relationship then enabled us to apply the cointegration method and formulate an empirical description of the paths of durable and nondurable consumption.

Using U.S. and Canadian data, we estimated the path of consumption that incorporated the effect of public consumption and solved and simulated these paths to calculate the effect on durable and nondurable private consumption of both a temporary and a permanent shock to public spending on goods and services. In addition to confirming our theoretical conjecture regarding the nature of crowding out effect, the empirical results also led to an important

observation concerning the way components of private aggregate demand respond to a fiscal shock. We saw that in both countries evidence suggested that demand for durable goods is likely to show relatively large swings which may undermine the stability of the sector and harm the supply side⁷.

References

- Akaike, H. (1973). Information theory and the extension of the maximum likelihood principle. In Proceedings of the Second International Symposium on Information Theory, eds. Petrov, B.N. and Caski, F., Budapest: Akademiai Kiado.
- Aschauer, D.A. (1985). Fiscal policy and aggregate demand, *American Economic Review*, 75: 117-127.
- Darby, J. and Malley, J. (1996). Fiscal policy and aggregate consumption: new evidence from the United States, *Scottish Journal of Political Economy*, 43: 129-145.
- Dickey, D. and Fuller, W.A. (1979). Distribution of the estimates for autoregressive time series with a unit root, *Journal of the American Statistical Association*, 74: 427-431.
- Dickey, D. and Fuller, W.A. (1981). Likelihood ratio statistics for autoregressive time series with a unit root, *Econometrica*, 49: 1057-1072.
- Feldstein, M. (1982). Government deficits and aggregate demand. *Journal of Monetary Economics*, 9: 1-20.
- Hall, R. (1978). Stochastic implications of the life cycle permanent income hypothesis: theory and evidence, *Journal of Political Economy*, 86: 971-987.
- Hannan, E.J. and Quinn B.G. (1979). The determination of the order of an autoregression, *Journal of the Royal Statistical Society B*, 41: 190-195.
- Johansen, S. (1988). Statistical analysis of cointegration vectors, *Journal of Economic Dynamics and Control*, 12: 231-254.
- Kormendi, R. (1983). Government debt, government spending and private sector behaviour, *American Economic Review*, 73: 994-1010.
- MacKinnon, J.G. (1994). Approximate asymptotic distribution functions for unit-root and cointegration tests, *Journal of Business and Economic Statistics*, 12: 167-176.
- Modigliani, F. and Sterling, A. (1986). Government debt, government spending and private sector behaviour: a comment, *American Economic Review*, 76: 1168-79.
- Molana, H. (1991). The time series consumption function: error correction, random walk and the steady state, *Economic Journal*, 101: 382-403.
- Molana, H. (1997). Consumption and fiscal policy: UK evidence from a cointegration approach on substitution between private and public spending on goods and services, *Empirical Economics*, 22: 63-81.
- Ni, S. (1995). An empirical analysis on the substitutability between private consumption and government purchases, *Journal of Monetary Economics*, 36: 593-605.

Pantula, S.G., Gonzalez-Farias, G. and Fuller, W.A. (1994). A comparison of unit-root test criteria, *Journal of Business and Economic Statistics*, 12: 449-459.

Schwarz, G. (1978). Estimating the dimension of a model, *Annals of Statistics*, 6: 461-464.

Pesaran, M.H., Shin, Y., and Smith, R.J. (1996). Structural Analysis of Vector Error Correction Models with Exogenous I(1) Variables, DAE Working Paper No. 9706, Department of Applied Econometrics, University of Cambridge.

Phillips, P.C.B. and Perron, P. (1988). Testing for a unit root in time series regression, *Biometrika*, 75: 335-346.

Appendix for Data Sources

U.S. Data

- The Private Consumption, Government (Non-Defence) Expenditure, Population and Disposable Personal Income data, 1929-96 are from the National Income and Product Accounts, U.S. Department of Commerce - Aug. 13 1997 release. The data is made available by the INFORUM GROUP, Department of Economics, University of Maryland, "<http://infourm.umd.edu/>".
- The Stock of Durable Goods Owned by Consumers and the Rate of Depreciation are from A. Katz and S. Herman, Improved Estimates of Fixed Reproducible Tangible Wealth, 1929-95, Survey of Current Business, U.S. Department of Commerce, 1997.
- The Nominal 3-month Treasury Bill Rate, 1934-96 is from the Federal Reserve Bank of St. Louis Database "<http://www.stls.frb.org/fred/>".

Canadian Data

- The Private Consumption, Population and Disposable Personal Income data, 1926-96 are from the Canadian Socio-Economic Information System (CANSIM), "<http://www.statcan.ca/>".
- The Stock of Durable Goods is derived by applying the perpetual inventory method to Flow of Durables using the U.S. rate of depreciation.
- Government (Non-Defence) Expenditure, 1930-96 is from the Department of Finance, Statistics Canada.
- The Nominal 3-month Treasury Bill Rate, 1934-96 is from the Bank of Canada, Department of Monetary and Financial Analysis, "http://www.bank-banque-canada.ca/pdf/annual_page3_page4.pdf/".

Notes

- ¹ See, for example, Aschauer (1985) and Ni (1995). Darby and Malley (1996) propose a more general approach to measuring the links between government expenditure and private consumption.
- ² See for example, Feldstein (1982), Kormendi (1983), Aschauer (1985) and Modigliani and Sterling (1986).
- ³ Two goods are *Edgworth complements (substitutes)* if the marginal utility of one rises (falls) as the quantity of the other is raised.
- ⁴ Regressions for $\ln Z$ in the latter case included an intercept dummy for the period 1941-1947. This improved the efficiency of estimates but did not alter the conclusion that the series were stationary around a linear deterministic time trend.
- ⁵ Note that this classification is consistent with the theory developed in Section 1 and is also supported empirically. For further details see the notes to Tables 3 and 4.
- ⁶ See Molana (1991) for a similar application of the error correction modelling based on an equilibrium relationship between consumption and wealth.
- ⁷ Molana (1997) reports similar results for the UK.