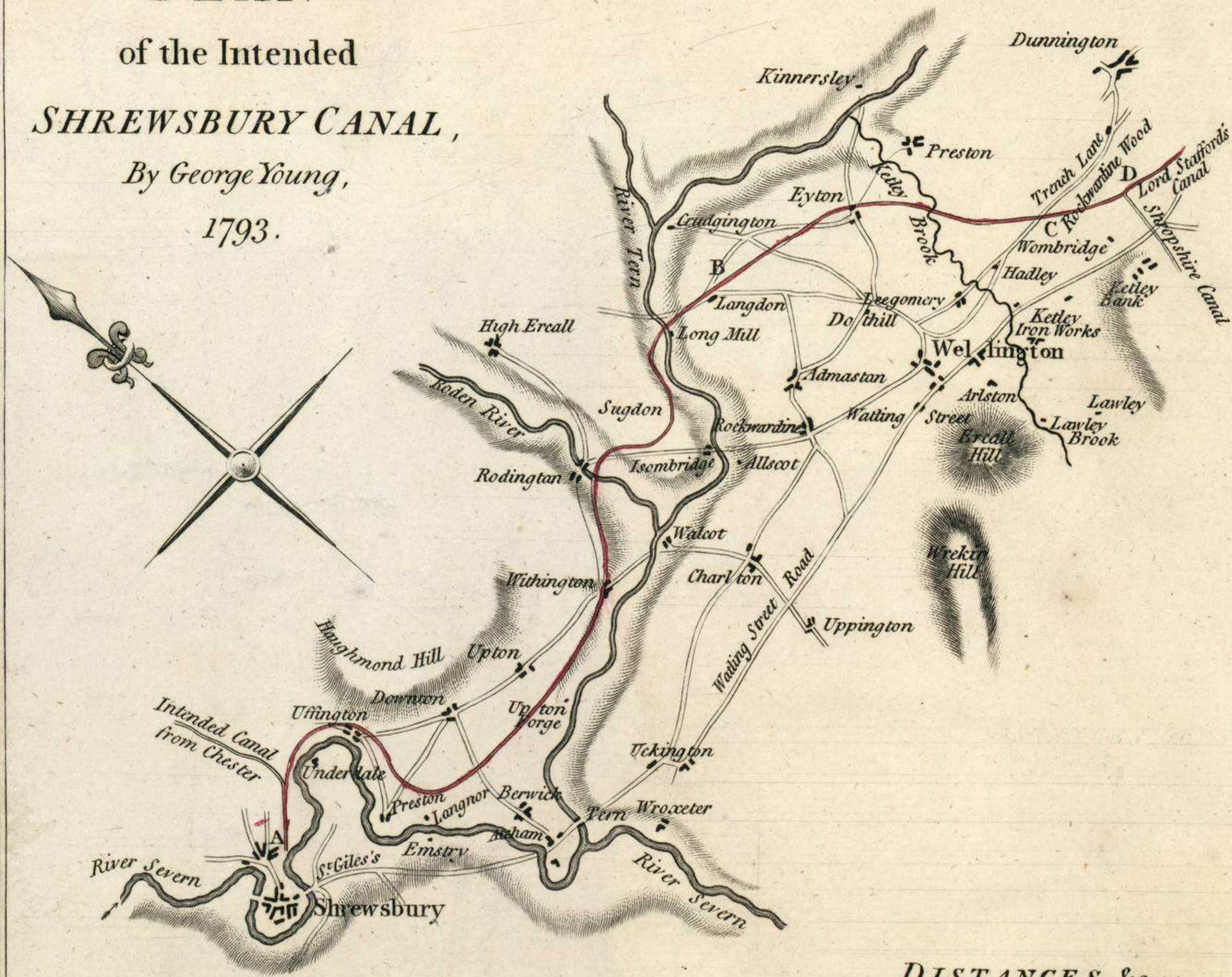


PLAN  
of the Intended  
**SHREWSBURY CANAL,**  
By George Young,  
1793.

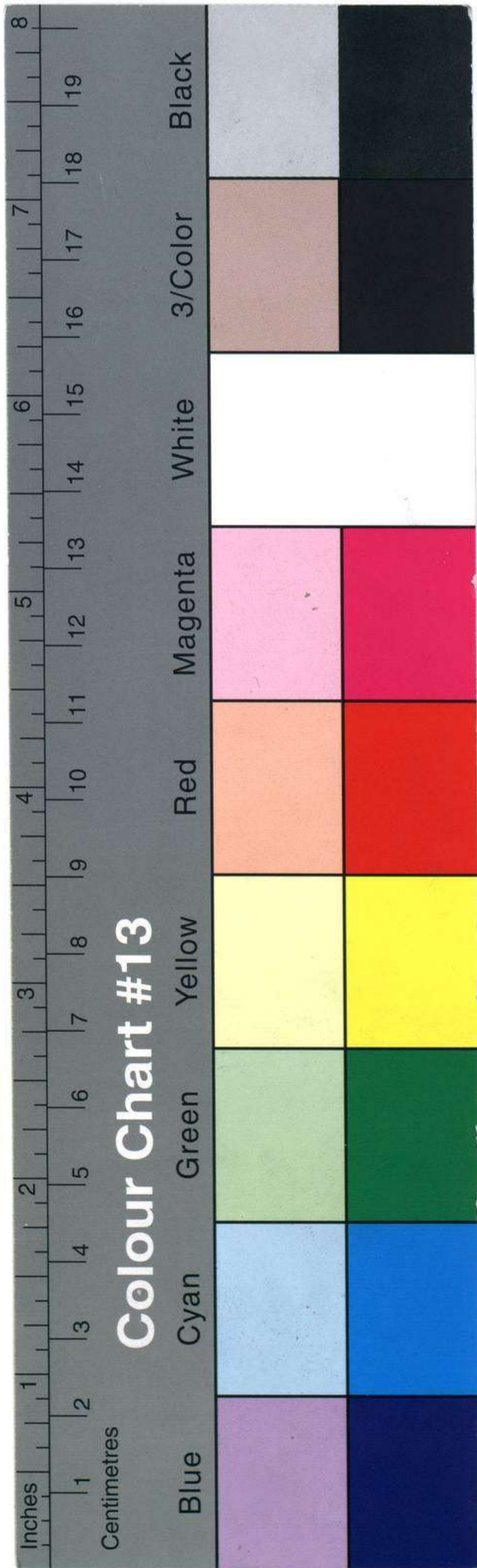
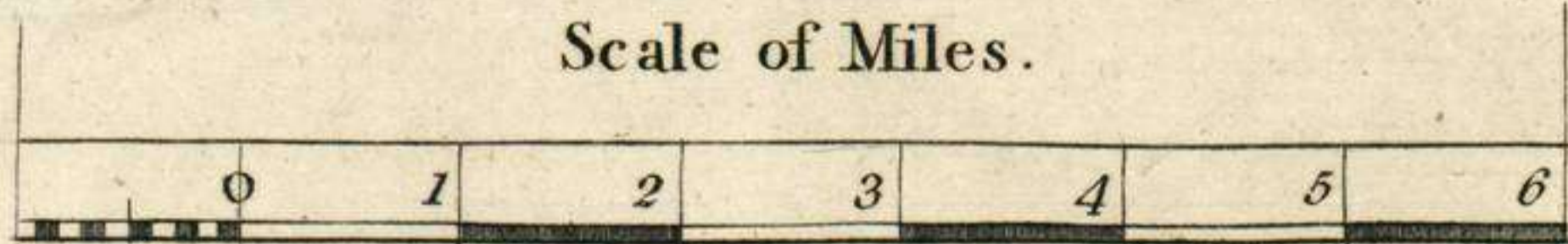


**DISTANCES &c.**

From A at Shrewsbury, to B at Longdon  $11 \frac{3}{4}$  Level  
 From B at Longdon, to C at Wambridge  $5 \frac{1}{2}$  <sup>Feet</sup> rise  
 From d.<sup>o</sup> to D at Rockwardine Wood ... 1 ... Level

Total  $17 \frac{3}{4}$  <sup>Feet</sup> rise

Scale of Miles.



Colour Chart #13

Inches 8 7 6 5 4 3 2 1  
 Centimetres 19 18 17 16 15 14 13 12 11 10 9 8 7 6 5 4 3 2 1  
 Blue Cyan Green Yellow Red Magenta White Black