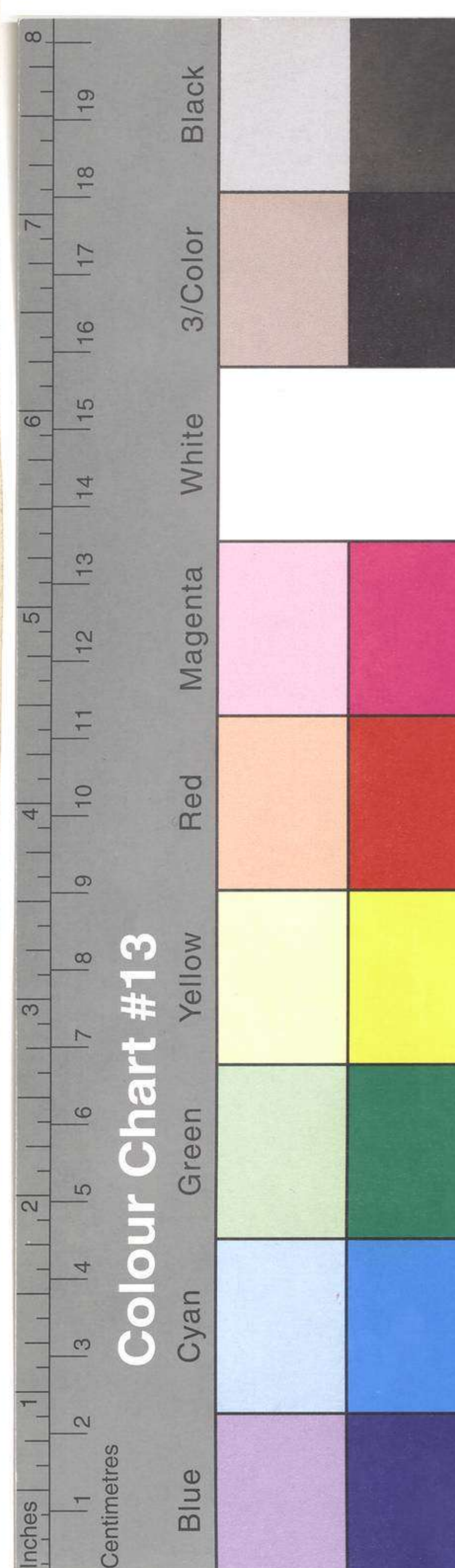
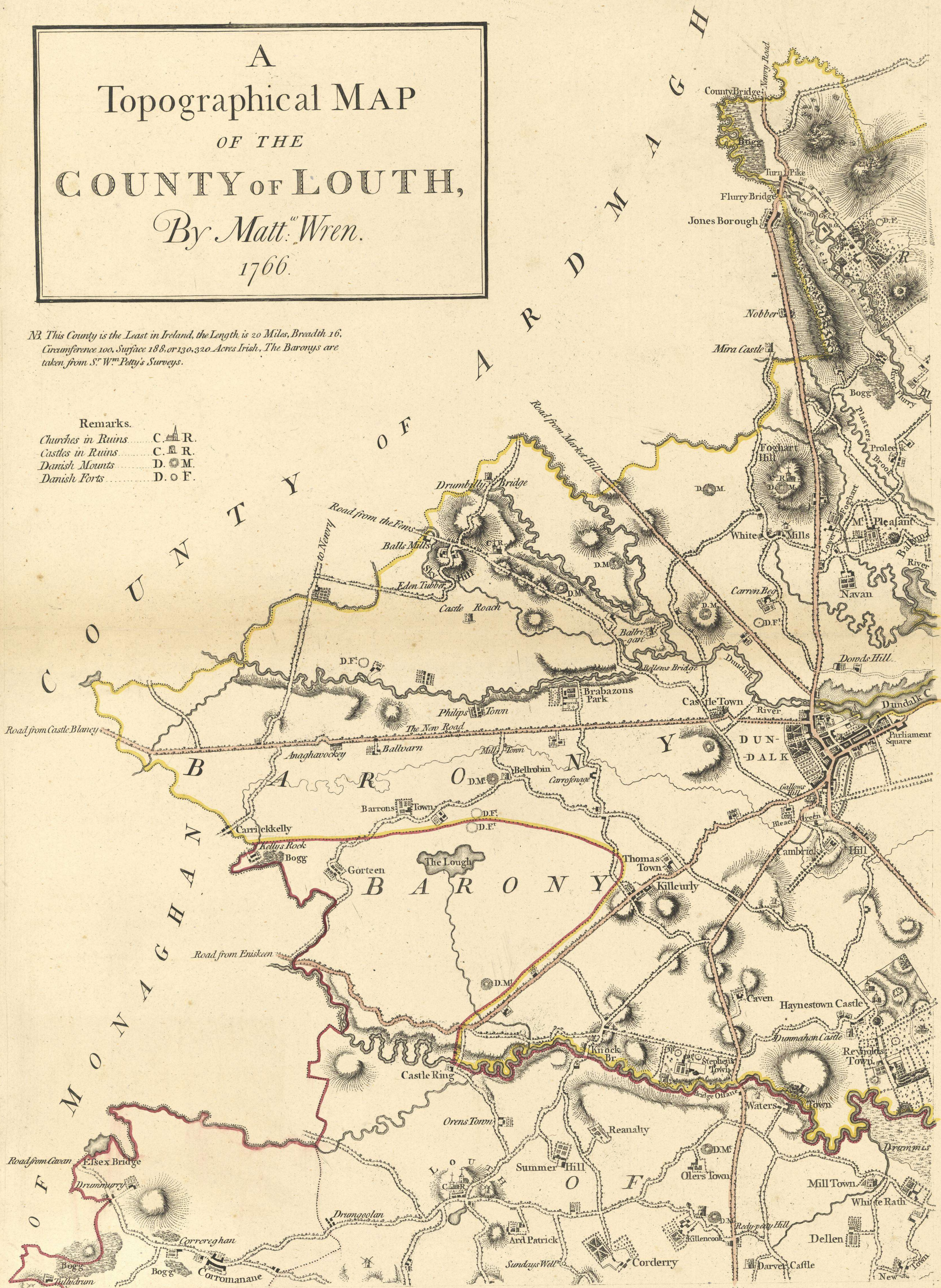


A  
 Topographical MAP  
 OF THE  
 COUNTY OF LOUTH,  
 By *Matt. Wren.*  
 1766.

*NB. This County is the Least in Ireland, the Length is 20 Miles, Breadth 16. Circumference 100, Surface 188, or 130,320 Acres Irish, The Baronys are taken from Sr Wm Petty's Surveys.*

- Remarks.
- Churches in Ruins ..... C. R.
  - Castles in Ruins ..... C. R.
  - Danish Mounts ..... D. M.
  - Danish Forts ..... D. F.





C O U N T Y O F D O W N

L O U G H O F C A R L I N G F O R D

C A R L I N G F O R D M O U N T A I N S  
G l a n M o r e M o u n t a i n s

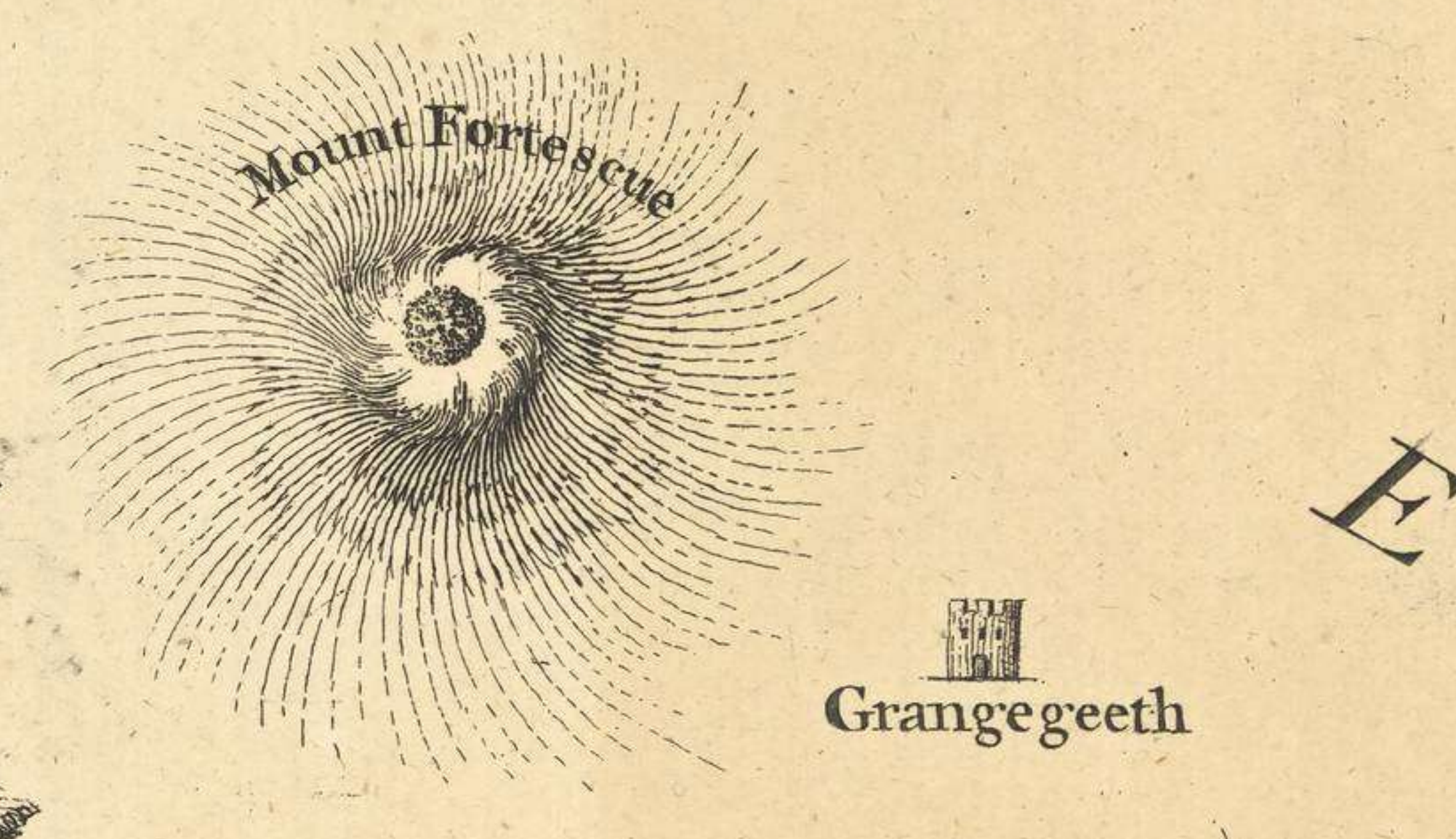
B A Y O F D U N D A L K

Magnetical Meridian  
The North of the World

Narrow Water  
Warrans Town  
Rosstrevor  
Killomen Point  
Green Castle  
Smeath  
Prospect  
Serial Ground  
High Water Mark  
Old Mill  
Carlingford  
Greenore Point  
Block House  
Kings Castle  
The Rocks  
Carlingford House  
Beggars  
Mullagh  
Cathrins Grove  
St. James's Well  
Ballagan  
Ballagan Point  
Upper Grange  
Crofselney  
Willyville  
C. R.  
Rath  
Cattle Town Cooly  
Bollog  
C. R.  
Cooly Point  
Rivers Town  
D. M. Cattlecara  
Rathear  
New Town  
Rocky Moore  
Pied M.  
M. Bagnell  
Ram  
Park  
Flurry  
The Point  
High Water Mark  
Hager's Town  
Lurgan Green  
kin Commons  
Drumiskin  
Sea Bank



TO THE  
 Right Hon.<sup>ble</sup> and Hon.<sup>ble</sup>  
 THE  
 Noblemen, Knights of the Shire, and Gentlemen  
 of the  
**COUNTY OF LOUTH.**  
 This MAP is most humbly Inscribed  
 By their most Obed.<sup>t</sup>  
 Humble Serv.<sup>t</sup>  
 Matth.<sup>o</sup> Wren.





S

E

H

T

A

S

T

H

A