

ENTRANCE TO THE CHAPEL OF FERDINAND & ISABELLA

LONDON.

HODGSON & GRAVES, PRINTSELLERS TO THE KING, 6, PALL MALL.

MDCCCXXXVII.

Printed at C. Hullmandel's Lithographic Establishment, 49, Great Marlborough Street

To
The most Noble the
Marquis of Lansdowne, K. G.

Esq. Esq. Esq.

This Volume of
Sketches in Spain,

is most respectfully dedicated,

with permission,

by his Lordships

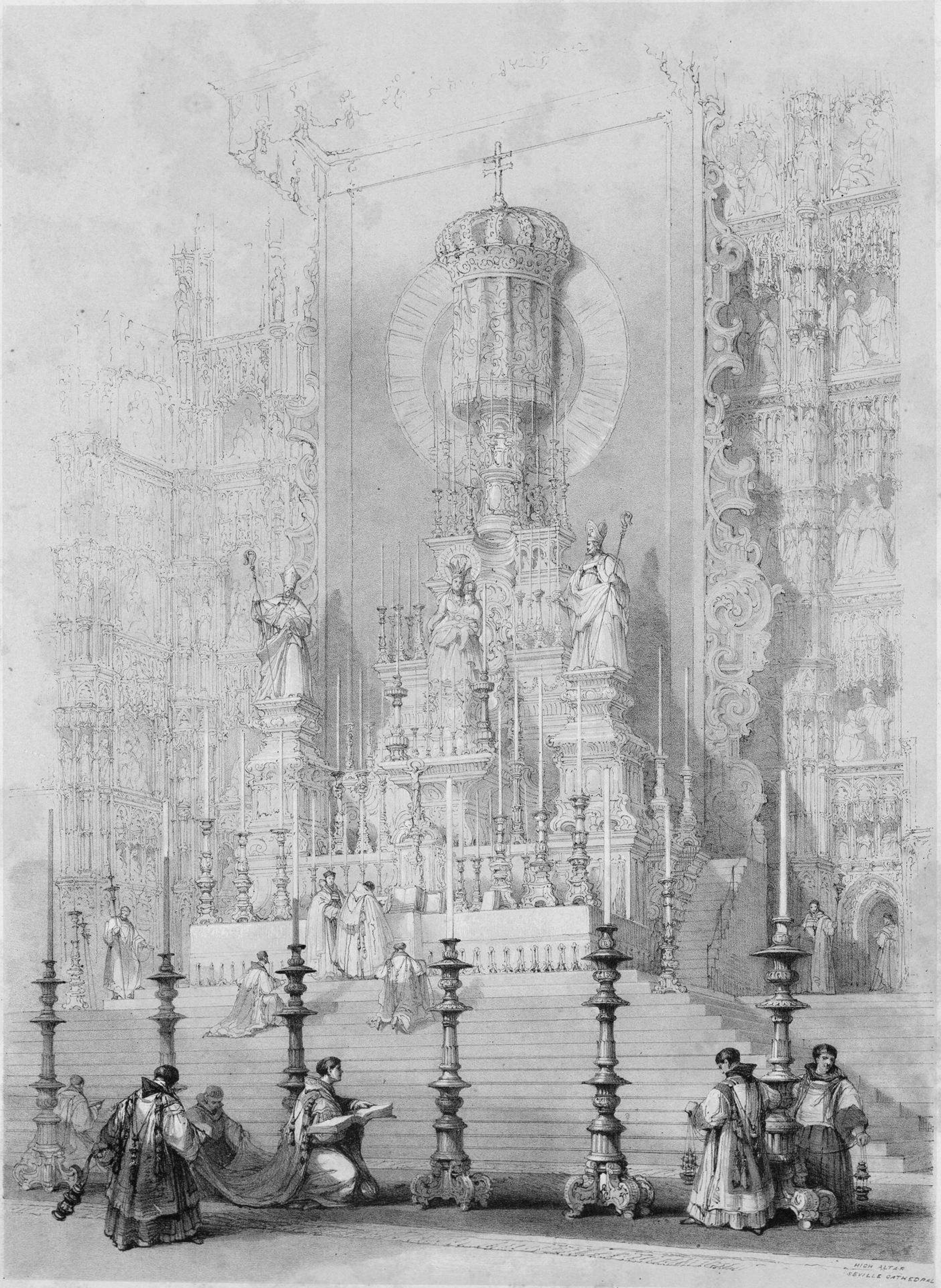
most obliged & obedient, humble Servant,

David Roberts

Sketches in Spain

by
DAVID ROBERTS.

- I.
Entrance to the Chapel of Ferdinand and Isabella, Granada. Drawn on Stone by T. Allom.
- II.
The High Altar of Seville Cathedral during the celebration of Corpus Christi. T. Allom.
- III.
Part of the High Altar during Mass and the great Candle in the Chancel of Seville Cathedral. W. Gauci.
- IV.
Interior of the Church of San Miguel Xeres. T. S. Boys.
- V.
North Aisle of Seville Cathedral, with the Procession of the Host. T. Allom. The Figures by D. Roberts.
- VI.
Church of San Jago, Xeres. T. S. Boys.
- VII.
Part of the Cathedral, Burgos. T. S. Boys.
- VIII.
Correo de los Morros or Ancient Guardhouse, Granada. T. S. Boys.
- IX.
Gate of the Vivarambla, Granada. T. S. Boys.
- X.
Tower of Comares, Fortrefs of the Alhambra. D. Roberts.
- XI.
Old Buildings on the River Darro, Granada. W. Gauci.
- XII.
Antient Roman Gateway, Cordova. T. S. Boys.
- XIII.
Chapel in the Great Mosque, Cordova. T. S. Boys.
- XIV.
The Tower of the Giralda, Seville. W. Gauci.
- XV.
Chapel of the Nunnery of the Virgin at Carmona during the Service of the Vigils by the Holy Sisterhood. L. Haghe.
- XVI.
Chapel of Ferdinand and Isabella, with the Tombs of Philip II and his Queen and of Ferdinand and Isabella. Granada. T. Allom.
- XVII.
Great Square and Market Place, Carmona. T. S. Boys.
- XVIII.
Entrance to Madrid. The Gate of Alcalá. D. Roberts.
- XIX.
Citadel and Port of Malaga. W. Gauci.
- XX.
Bridge of Toledo on the River Manzanares. Madrid. T. S. Boys.
- XXI.
Porch of an Antient Mosque, Cordova. W. Gauci.
- XXII.
Mill and Bridge on the Guadalquivir, Cordova. T. S. Cooper.
- XXIII.
Distant View of the Palace of the Escorial and Mountains of the Guadarama. T. S. Cooper.
- XXIV.
Great Mosque and Palace of the Archbishop, Cordova. T. S. Boys.
- XXV.
The Rock of Gibraltar, facing the Neutral Ground. W. Gauci.
- XXVI.
The Bull Ring Seville. L. Haghe.



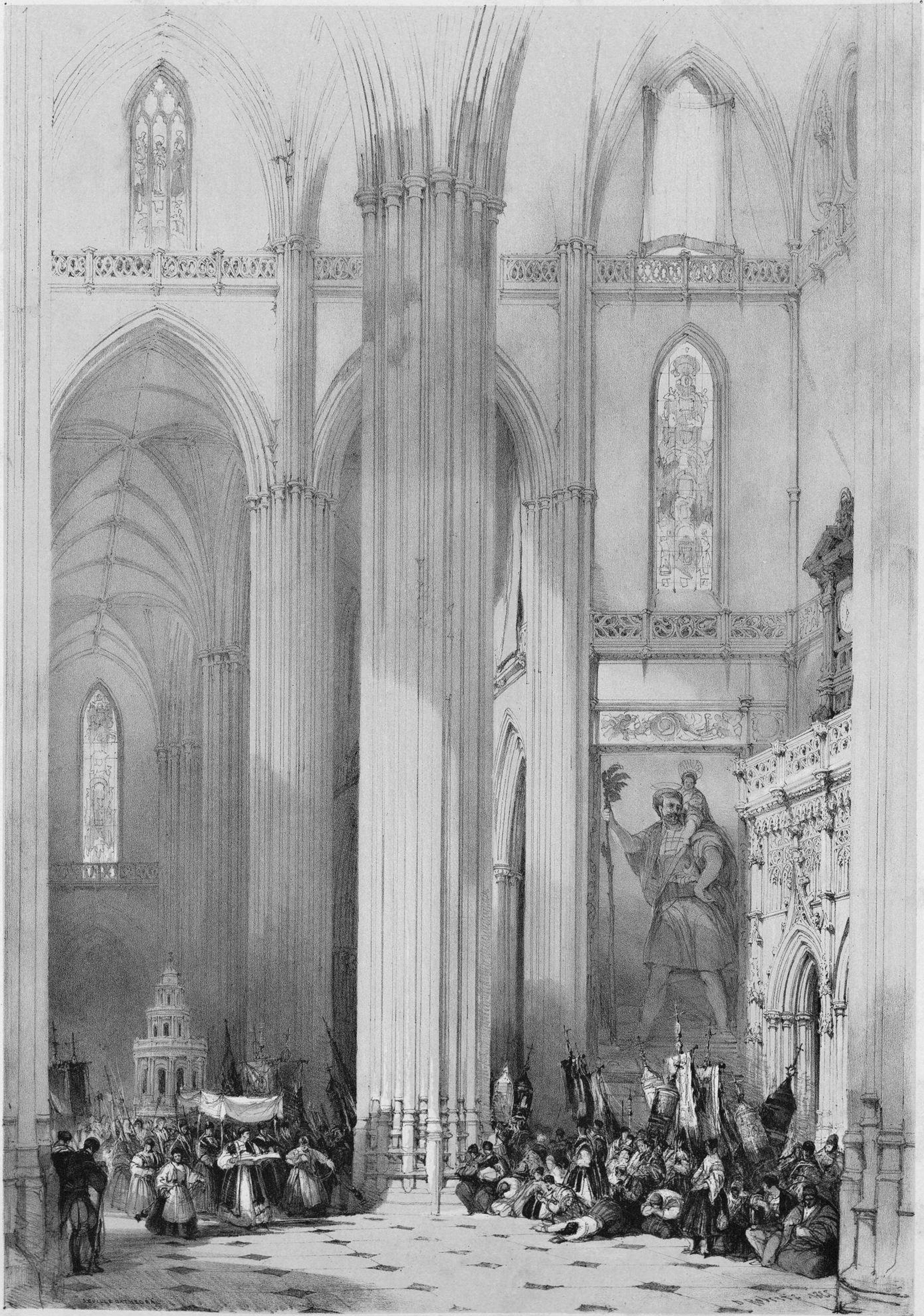
HIGH ALTAR
SEVILLE CATHEDRAL



THE CATHEDRAL
SEVILLE



CHURCH OF SAN MIGUEL, TERESOPOLIS

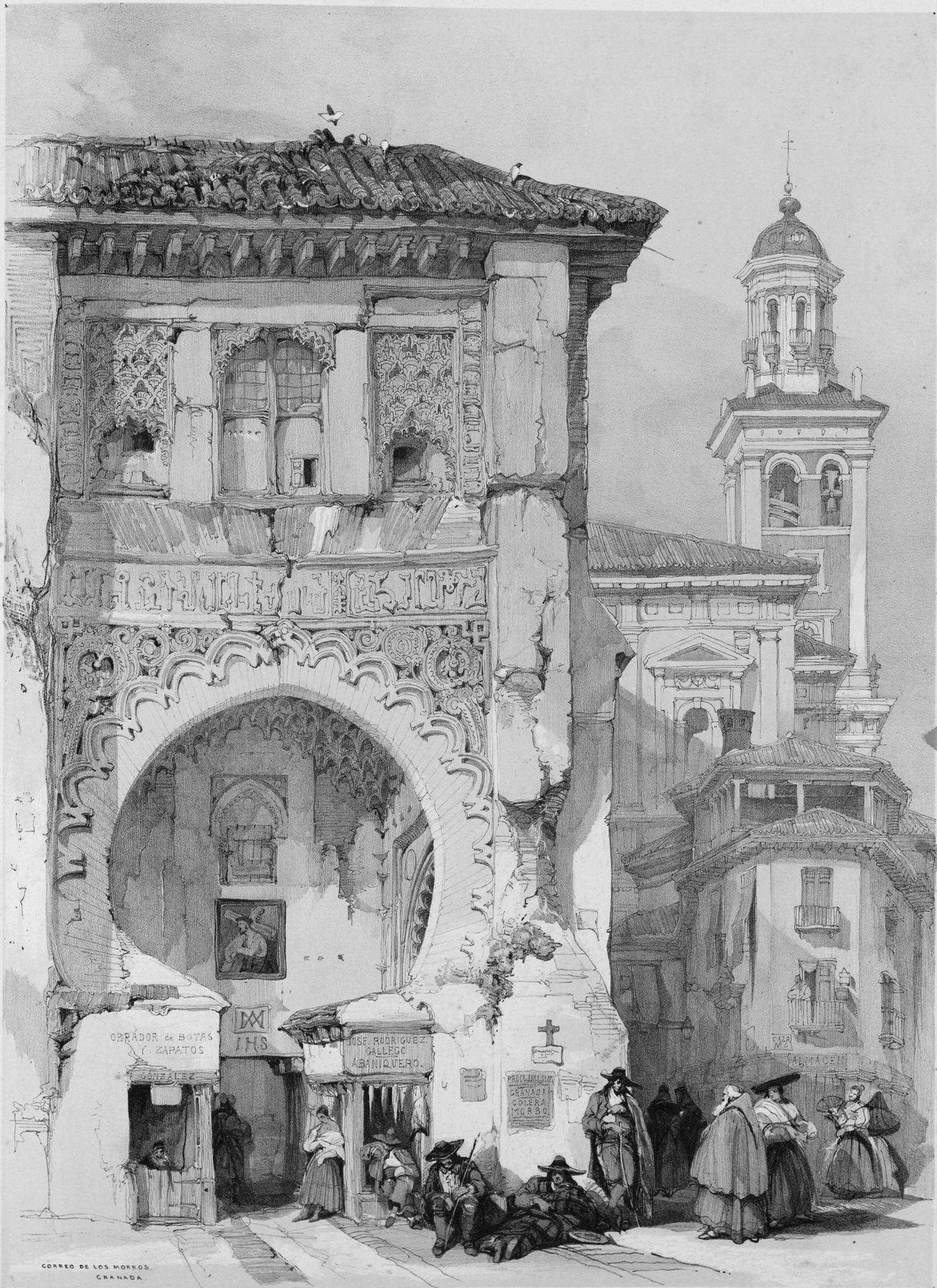




CHURCH OF SAN JACO NÎMES



PART OF THE CATHEDRAL - BURGOS.



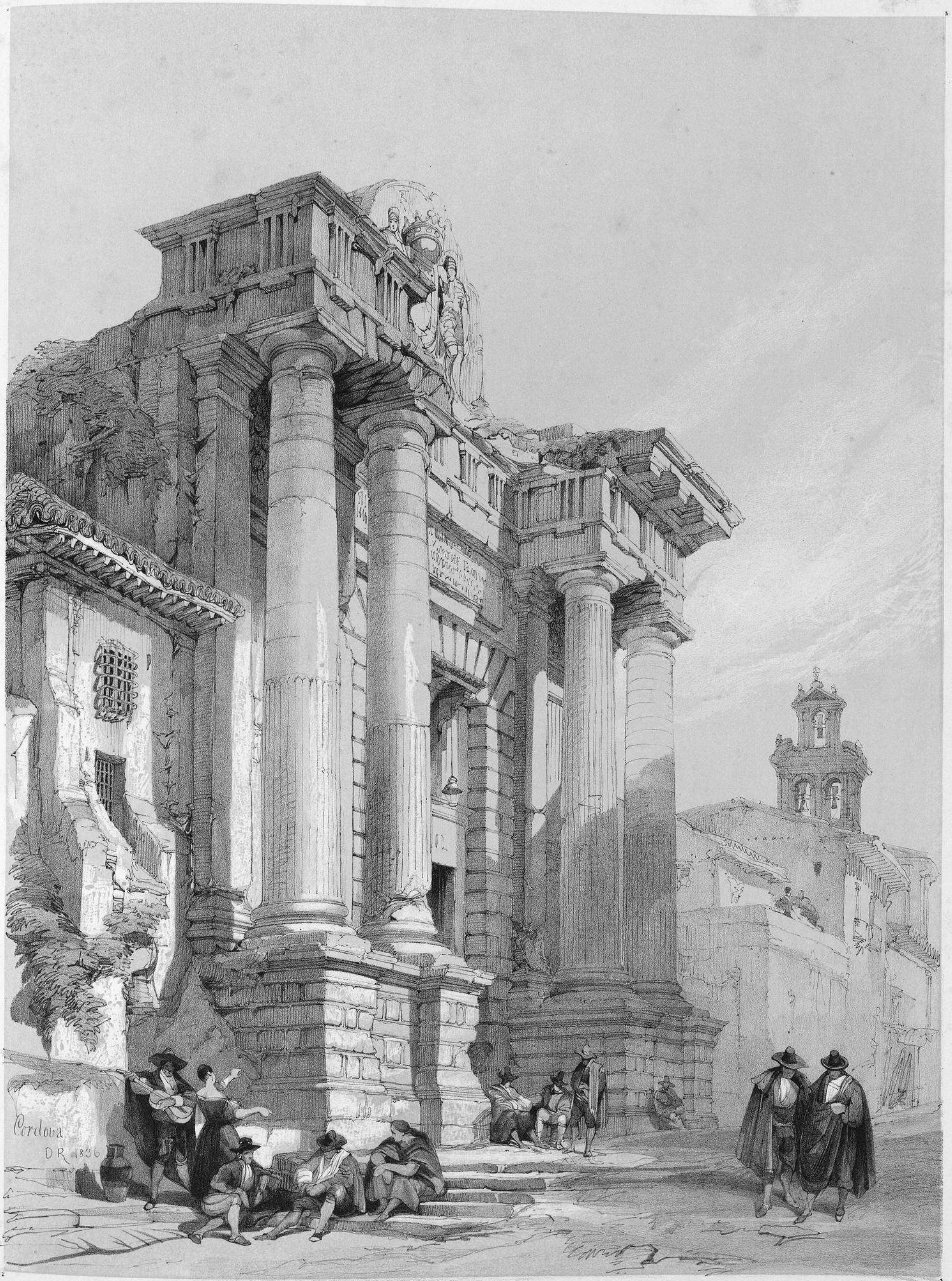


Gate of the Viverrambre
GRANADA





old buildings, Granada



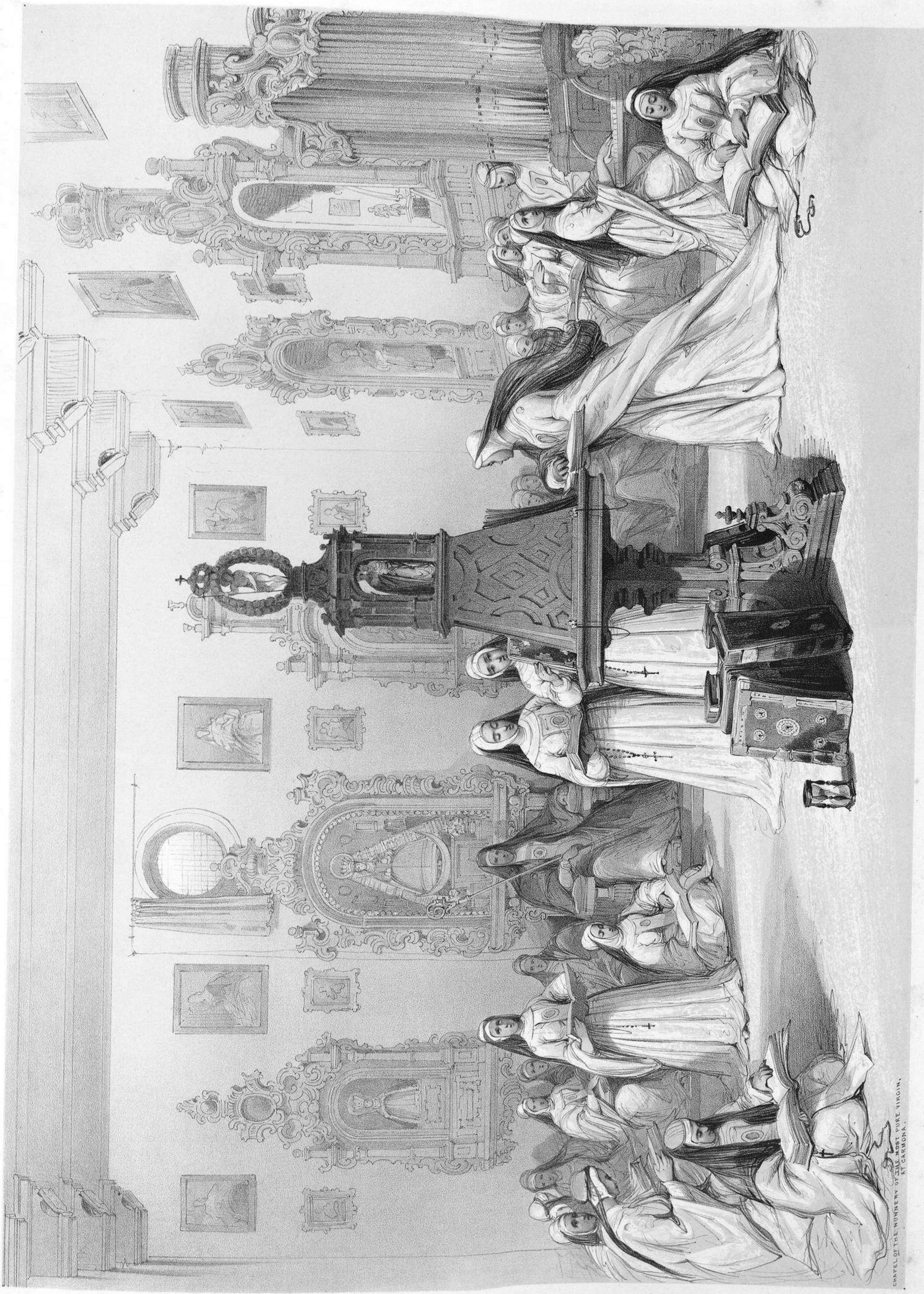
Ancient Roman Gateway - Cordova



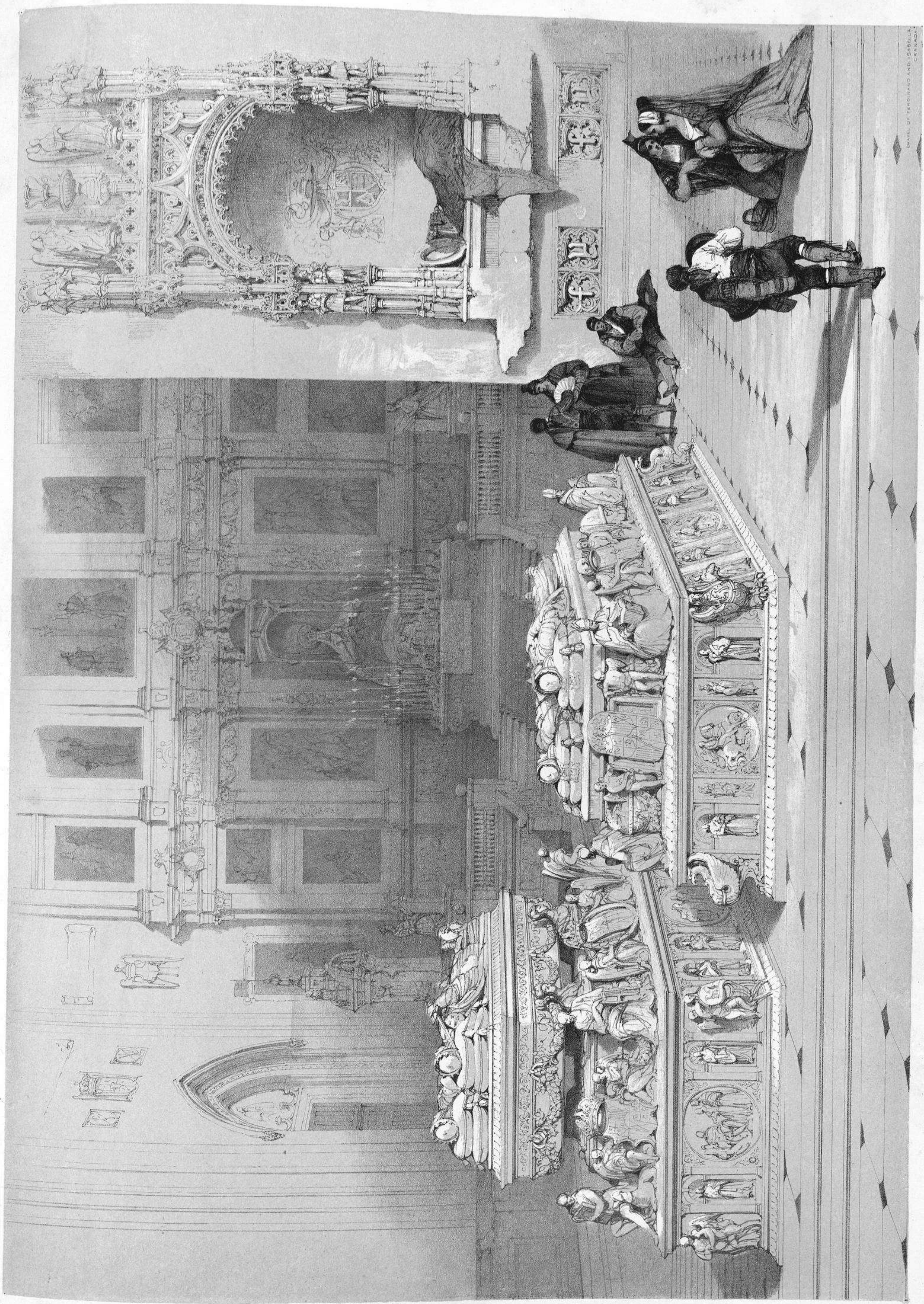
THE MOSQUE
CORDOVA



Tower of the Giralda, Seville
(c) Museo Romántico

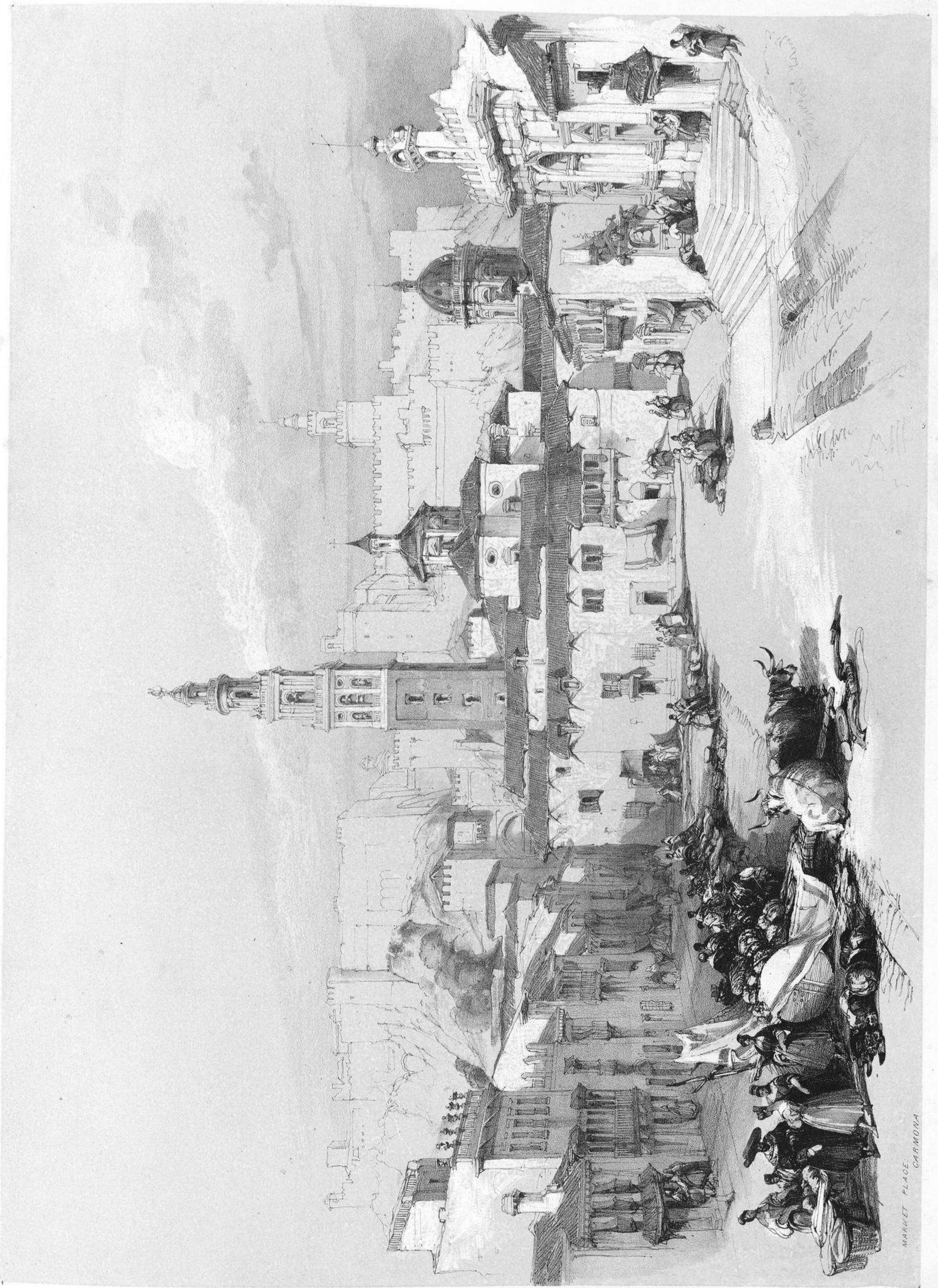


CHAPEL OF THE MONASTERY OF THE MOST PURE VIRGIN, AT GAMBONA.



CHAP. OF FERDINAND AND ISABELLA GRANADA

Chap. of Ferdinand & Isabella Granada



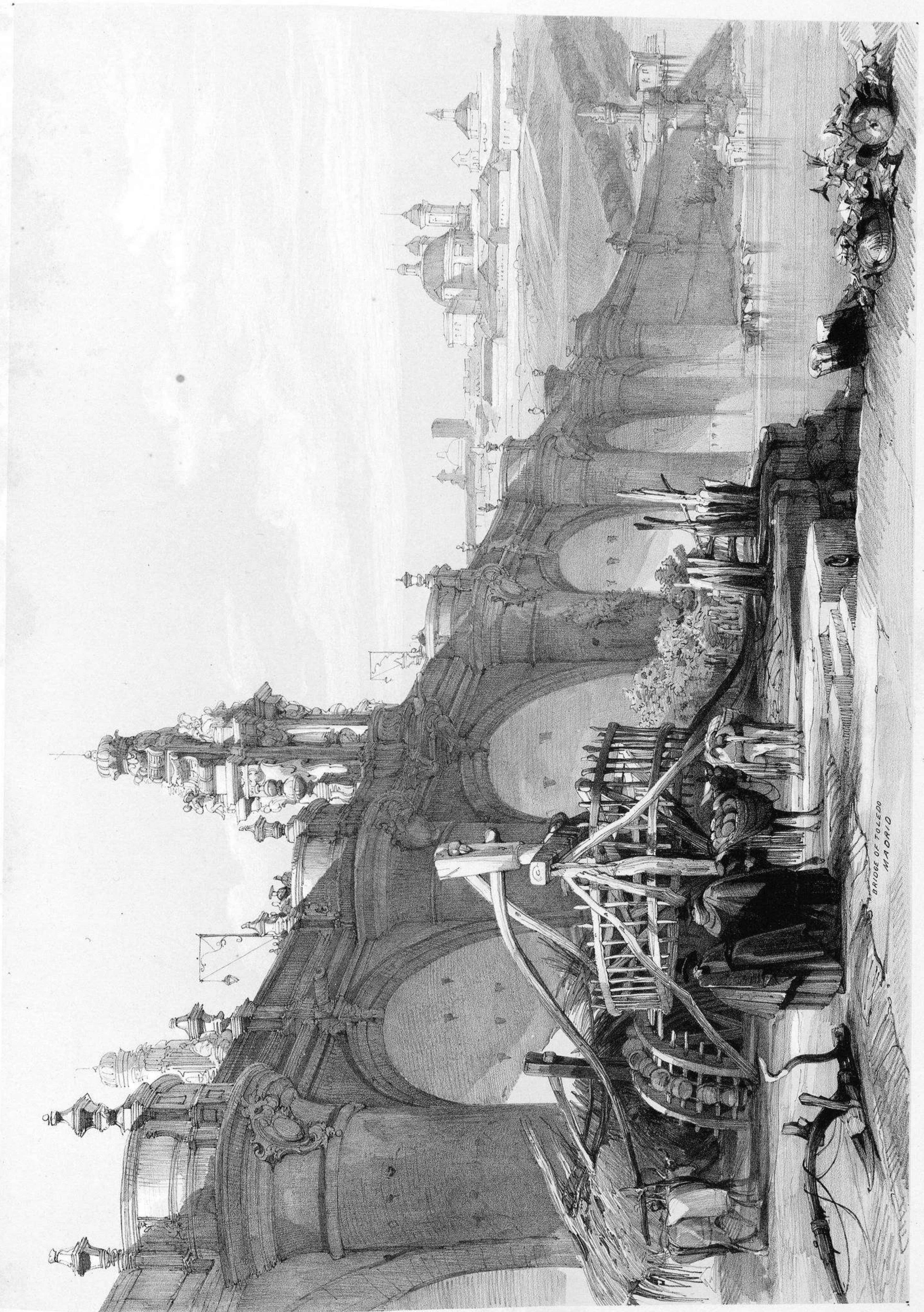
MARKET PLACE. CARMONA



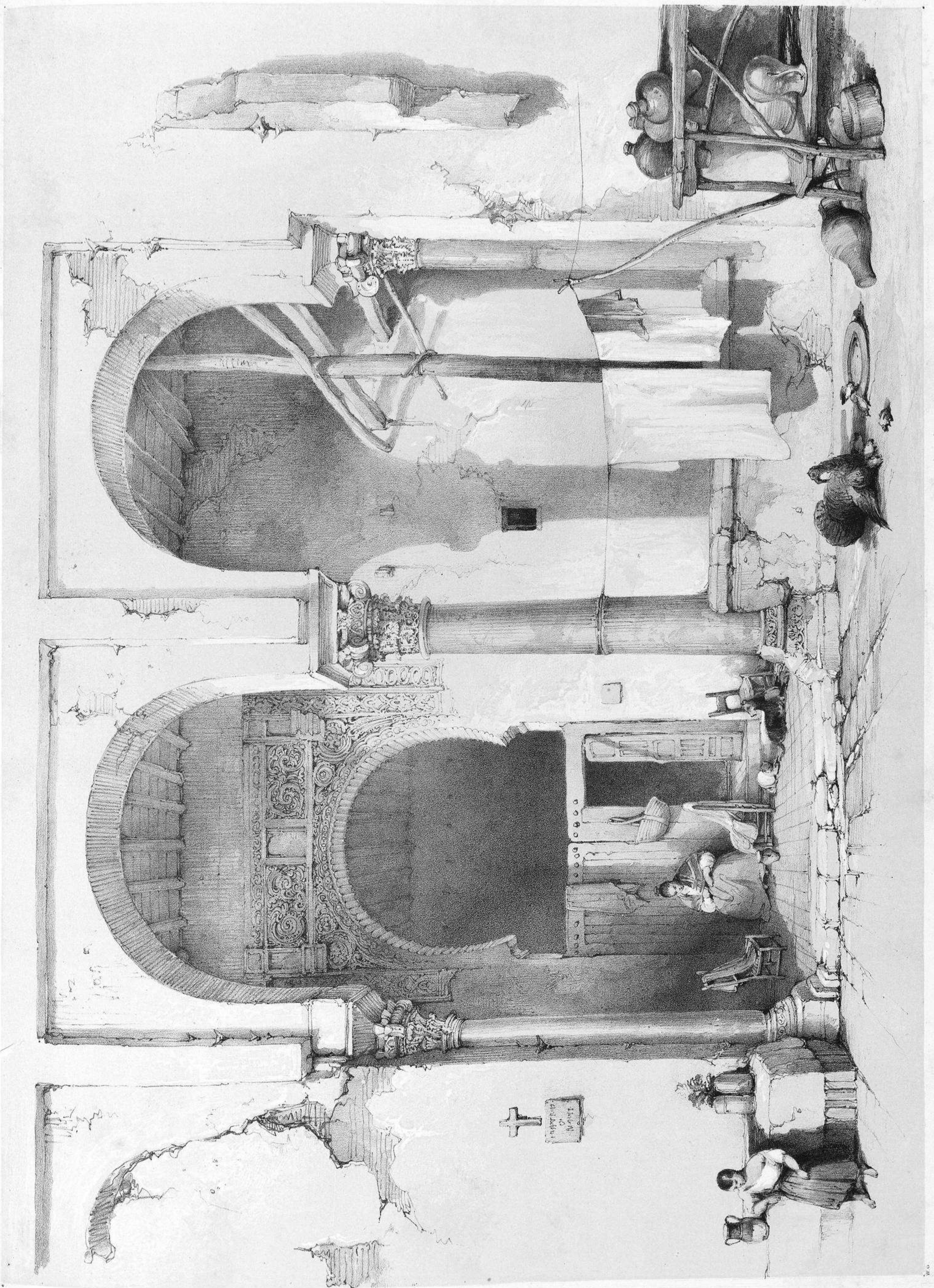
Entrance to Madrid



W. G.

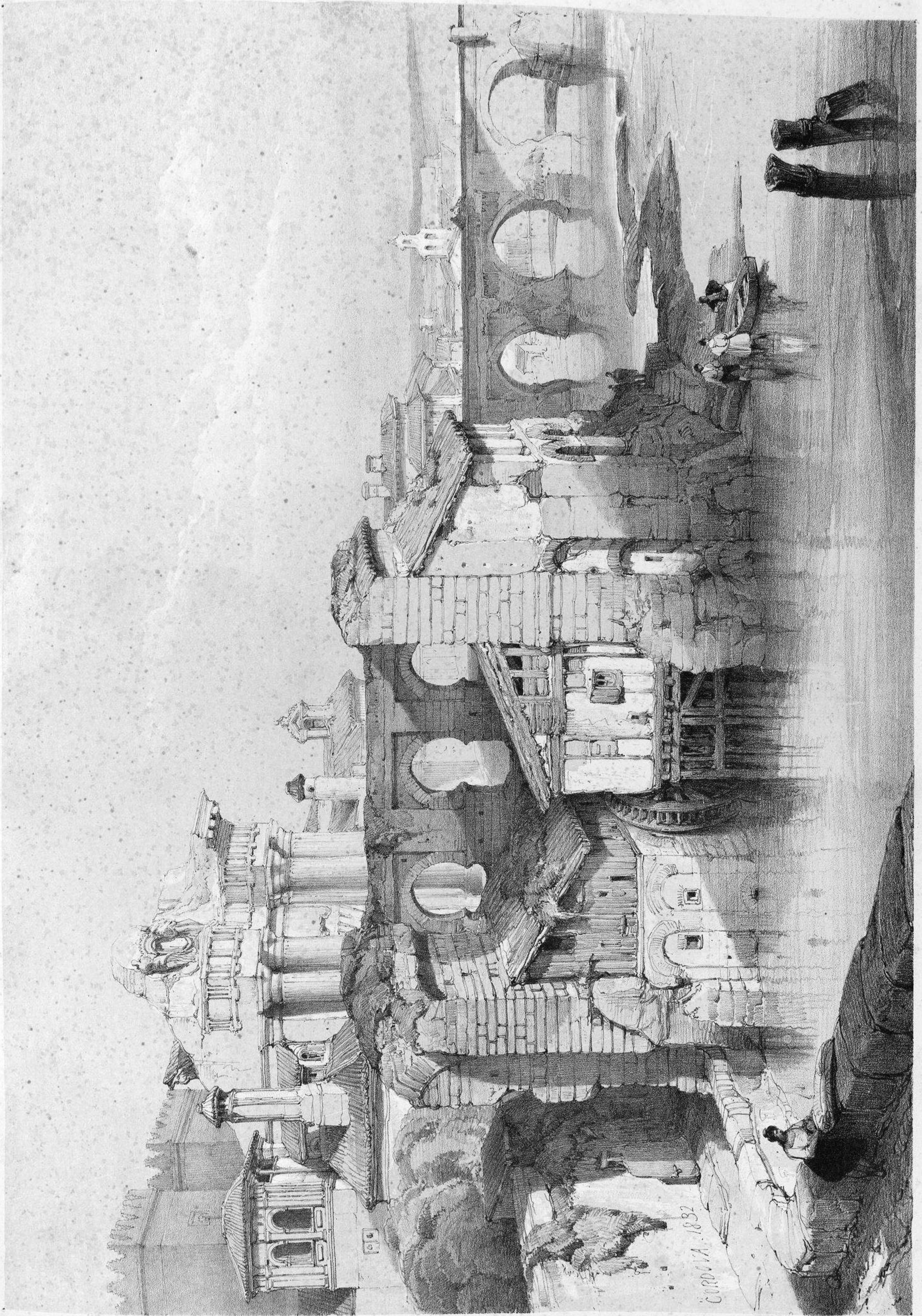


BRIDGE OF TOLEDO
MADRID



W. 8

Cordova

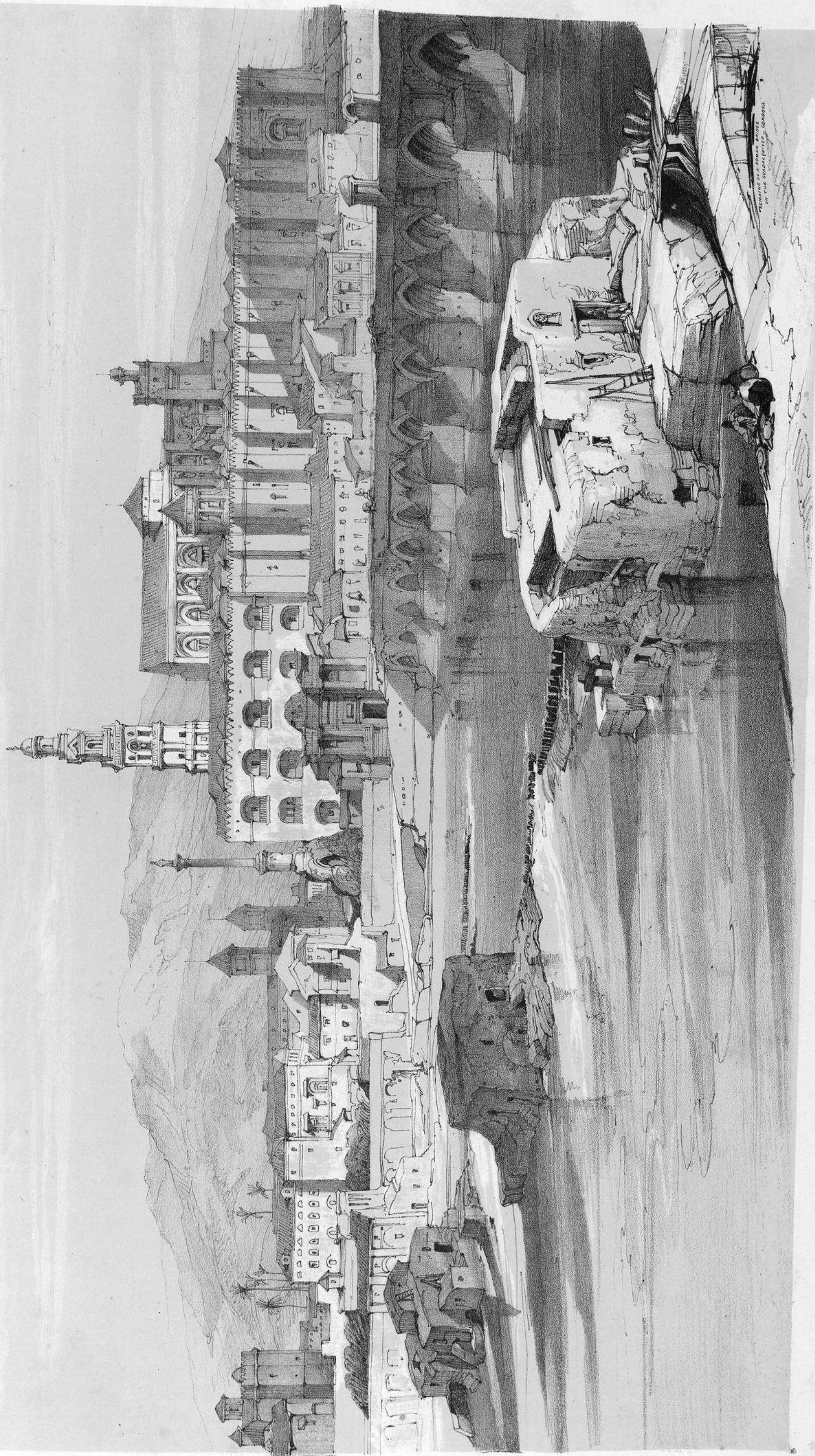


London: Published by R. Taylor & Co. 1832.

Cordoba



THE ECURIAL



Cordoba





BULL FIGHT. SEVILLE.

WORKS ON SPAIN,
RECENTLY PUBLISHED BY
HODGSON AND GRAVES, PRINTSELLERS TO THE KING,
6, PALL MALL, LONDON.

LEWIS'S SPANISH SKETCHES

MADE DURING A RESIDENCE OF SOME MONTHS IN

THE ALHAMBRA,

IN THE YEARS, 1833-4.

Consisting of Twenty-six of the most interesting Scenes of the exterior and interior of that splendid monument of Moorish grandeur,—a palace the most elaborate in beauty of Decoration of any now existing, and the once celebrated Fortress of Granada.

Drawn on Stone by J. D. HARDING, R. J. LANE, A.R.A., W. GAUCI, and J. F. LEWIS,
Imperial Folio, Tinted, £4. 4s. India, £5. 5s. *half bound*.

Colored and mounted exactly like the original Sketches in a portfolio, £10. 10s.

The talents of Mr. HARDING, Mr. LANE, and Mr. LEWIS, were never more happily combined than in this set of Characteristic Sketches of Spanish Scenery and Costume.

"We have now before us a copy of this work, mounted and beautifully colored after the original drawings, and it forms altogether a very sweet gallery of Spanish scenery, costume, and character—whether in the portfolio, or hung round the room, we can hardly fancy a more pleasing companion to the lover of the fine arts."—LITERARY GAZETTE, JUNE 11, 1836.

"The volume before us is one of rare value. The magnificent Alhambra, and the scenes that are connected with it, have never been brought so clearly under our view. We are almost among them—with bright-eyed maidens and serious monks, that stroll or sit beneath the shade of the glorious pillars of the long honored structure."—NEW MONTHLY MAGAZINE.

"Several of the drawings are by Lewis himself, the others are by Harding and Lane. Harding's are the best; the distant view of the Alhambra, with the city below, and the mountains beyond, is the most beautiful of all, it displays the finished excellence of Harding's drawing, and is at the same time a perfect reflection of Lewis's sketch."—SPECTATOR.

"To Artists or genuine Amateurs the work is invaluable; for it is impossible to imagine any sketches more graphically and faithfully rendered than these."—UNITED SERVICE GAZETTE.

"This is a splendid portfolio, containing several views of the celebrated Alhambra, and of the courts and halls of that magnificent pile. The Alhambra is a castellated fortress, including the Palace of the Moorish Kings in the City of Granada, where they held dominion over this terrestrial Paradise, and made their last stand for empire in Spain. To the traveller fond of historical research, or endowed with poetic fancy, the Alhambra is as much an object of veneration as is the sacred shrine of Mecca to all true Moslem believers."—ALBION.

LIST OF DRAWINGS.

1. GENERAL VIEW OF THE ALHAMBRA - - -	Drawn on Stone by J. D. HARDING.	14. SALA DE LAS DOS HERMANAS - - -	Drawn on Stone by W. GAUCI.
2. PUERTA DE JUSTITIA, OR GATE OF JUSTICE - - -	JOHN F. LEWIS.	15. ENTRANCE TO THE SALA DE LAS DOS HERMANAS - - -	JOHN F. LEWIS.
3. PUERTA DEL VINO, OR GATE OF THE VINE - - -	J. D. HARDING.	16. PATIO DE LOS LEONES, OR COURT OF LIONS - - -	W. GAUCI.
4. PART OF THE ALHAMBRA FROM THE ADARVES - - -	JOHN F. LEWIS.	17. ENTRANCE TO THE HALL OF THE ABENCERRAGES - - -	J. D. HARDING.
5. CASA DE SANCHEZ, AN OLD HOUSE IN THE ALHAMBRA - - -	JOHN F. LEWIS.	18. INTERIOR OF THE HALL OF THE ABENCERRAGES - - -	W. GAUCI.
6. PATIO DE LOS ARRAYANES, OR COURT OF THE MYRTLES - - -	R. J. LANE.	19. FOUNTAIN OF LIONS - - -	W. GAUCI.
7. " " " AND PALACE OF CHARLES V. - - -	J. D. HARDING.	20. COURT OF THE LIONS FROM THE HALL OF JUSTICE - - -	W. GAUCI.
8. " " " AND TOWER OF COMARES - - -	W. GAUCI.	21. ENTRANCE TO THE MOSQUE - - -	W. GAUCI.
9. ENTRANCE TO THE HALL OF AMBASSADORS - - -	W. GAUCI.	22. PATIO DE LA MESQUITA, OR COURT OF THE MOSQUE - - -	JOHN F. LEWIS.
10. WINDOW IN THE HALL OF AMBASSADORS - - -	JOHN F. LEWIS.	23. THE PALACE OF THE GENERALIFE, FROM THE CASI DE CHAPI - - -	W. GAUCI.
11. VIEW FROM THE DOOR OF THE HALL OF AMBASSADORS - - -	W. GAUCI.	24. TORRE DE LAS INFANTAS, OR TOWER OF THE INFANTAS - - -	J. D. HARDING.
12. TORRE DE COMARES, OR TOWER OF COMARES - - -	J. D. HARDING.	25. PART OF THE ALHAMBRA FROM THE ALAMEDA DEL DARRO - - -	JOHN F. LEWIS.
13. ENTRANCE TO THE BANOS, OR BATHS - - -	J. D. HARDING.	26. VIGNETTE—THE FOUNTAIN OF LIONS - - -	JOHN F. LEWIS.

SPANISH MONKS PREACHING FOR THE BENEFIT OF THEIR CONVENT:—SEVILLE,

ENGRAVED BY J. C. BROMLEY, FROM THE ORIGINAL BY JOHN F. LEWIS.

Prints, £2. 2s. Proofs, £4. 4s. Before Letters, £6. 6s.

A few impressions have been colored exactly like the original Drawing, Price £5. 5s.

SPANISH MENDICANTS AT A CONVENT DOOR,

PAINTED BY JOHN F. LEWIS; ENGRAVED BY CHARLES G. LEWIS.

Prints, 12s. Proofs, £1. 1s. Colored, £1. 11s. 6d.