



High Plasma Levels of sTNF-R1 and CCL11 Are Related to CD4+ T-Cells Fall in Human Immunodeficiency Virus Elite Controllers With a Sustained Virologic Control

OPEN ACCESS

Edited by:

Guido Poli,
 Università Vita-Salute San
 Raffaele, Italy

Reviewed by:

Paul Urquhart Cameron,
 University of Melbourne, Australia
 Marie-Lise Gougeon,
 Institut Pasteur, France

*Correspondence:

Norma Rallón
 normaibon@yahoo.com,
 norma.rallon@
 hospitalreyjuancarlos.es;
 José Miguel Benito
 jbenito1@hotmail.com,
 jose.benito@hospitalreyjuancarlos.es

[†]These authors have contributed
 equally to this work.

[‡]The clinical centers and research
 groups that contribute to ECRIS are
 shown in Supplementary Material.

Specialty section:

This article was submitted to
 Viral Immunology,
 a section of the journal
 Frontiers in Immunology

Received: 26 March 2018

Accepted: 05 June 2018

Published: 18 June 2018

Citation:

Gutiérrez-Rivas M, Jiménez-
 Sousa MÁ, Rallón N, Jiménez JL,
 Restrepo C, León A, Montero-
 Alonso M, González-García J,
 Muñoz-Fernández MÁ, Benito JM
 and Resino S (2018) High Plasma
 Levels of sTNF-R1 and CCL11 Are
 Related to CD4+ T-Cells Fall in
 Human Immunodeficiency Virus Elite
 Controllers With a Sustained
 Virologic Control.
 Front. Immunol. 9:1399.
 doi: 10.3389/fimmu.2018.01399

Mónica Gutiérrez-Rivas^{1†}, María Ángeles Jiménez-Sousa^{1†}, Norma Rallón^{2,3*},
 José Luis Jiménez^{4,5}, Clara Restrepo^{2,3}, Agathe León⁶, Marta Montero-Alonso⁷,
 Juan González-García⁸, María Ángeles Muñoz-Fernández^{5,9}, José Miguel Benito^{2,3*†}, and
 Salvador Resino^{1†} on Behalf of ECRIS Integrated in the Spanish AIDS Research Network[‡]

¹Unidad de Infección Viral e Inmunidad, Centro Nacional de Microbiología, Instituto de Salud Carlos III, Majadahonda, Spain, ²Instituto de Investigación Sanitaria Fundación Jiménez Díaz, Universidad Autónoma de Madrid (IIS-FJD, UAM), Madrid, Spain, ³Hospital Universitario Rey Juan Carlos, Móstoles, Spain, ⁴Plataforma de Laboratorio, Hospital General Universitario "Gregorio Marañón", Madrid, Spain, ⁵Sección Inmunología, Laboratorio Inmunobiología Molecular, Hospital General Universitario "Gregorio Marañón", Madrid, Spain, ⁶Servicio de Enfermedades Infecciosas, Hospital Clinic-IDIBAPS, Barcelona, Spain, ⁷Unidad de Enfermedades Infecciosas, Hospital Universitario y Politécnico "La Fe", Valencia, Spain, ⁸Servicio de Medicina Interna, Hospital Universitario "La Paz", Madrid, Spain, ⁹Instituto de Investigación Sanitaria del Gregorio Marañón, Madrid, Spain

Our aim was to analyze the relationship between plasma inflammatory biomarkers and CD4+ T-cells evolution in human immunodeficiency virus (HIV) elite controllers (HIV-ECs) with a suppressed viremia. We carried out a retrospective study in 30 HIV-ECs classified into two groups: those showing no significant loss of CD4+ T-cells during the observation period (stable CD4+, $n = 19$) and those showing a significant decrease of CD4+ T-cells (decline CD4+, $n = 11$). Baseline plasma biomarkers were measured using a multiplex immunoassay: sTNF-R1, TRAIL, sFas (APO), sFasL, TNF- α , TNF- β , IL-8, IL-18, IL-6, IL-10, IP-10, MCP-1, MIP-1 α , MIP-1 β , RANTES, SDF1 α , GRO- α , and CCL11. Baseline levels of sTNF-R1 and CCL11 and sTNF-R1/TNF- α ratio correlated with the slope of CD4+ T-cells (cells/ μ l/year) during follow-up [$r = -0.370$ ($p = 0.043$), $r = -0.314$ ($p = 0.091$), and $r = -0.381$ ($p = 0.038$); respectively]. HIV-ECs with declining CD4+ T-cells had higher baseline plasma levels of sTNF-R1 [1,500.7 (555.7; 2,060.7) pg/ml vs. 450.8 (227.9; 1,263.9) pg/ml; $p = 0.018$] and CCL11 [29.8 (23.5; 54.9) vs. 19.2 (17.8; 29.9) pg/ml; $p = 0.041$], and sTNF-R1/TNF- α ratio [84.7 (33.2; 124.2) vs. 25.9 (16.3; 75.1); $p = 0.012$] than HIV-1 ECs with stable CD4+ T-cells. The area under the receiver operating characteristic (ROC) curve [area under ROC curve (AUROC)] were 0.758 ± 0.093 (sTNF-R1), 0.727 ± 0.096 (CCL11), and 0.777 ± 0.087 (sTNF-R1/TNF- α). The cut-off of 75th percentile (high values) for these biomarkers had 71.4% positive predictive value and 73.9% negative predictive value for anticipating the evolution of CD4+ T-cells. In conclusion, the loss of CD4+ T-cells in HIV-ECs was associated with higher levels of two plasma inflammatory biomarkers (sTNF-R1 and CCL11), which were also reasonably accurate for the prediction of the CD4+ T-cells loss.

Keywords: human immunodeficiency virus, elite controllers, inflammation, plasma biomarkers, acquired immune deficiency syndrome, progression

INTRODUCTION

CD4+ T-cells are the major target for human immunodeficiency virus (HIV); therefore, a gradual CD4+ T-cells count decline and progression to acquired immune deficiency syndrome (AIDS) are normally observed during untreated HIV-infection (1). In contrast, elite controllers [HIV elite controllers (HIV-ECs)] are a subgroup of antiretroviral treatment-naïve HIV-infected patients (<1%) that naturally suppress HIV viremia (generally <50 copies/ml) with relative CD4+ T-cells preservation and delayed AIDS progression, but a persistent low-level HIV replication is detectable by ultrasensitive assays (2). Moreover, there is substantial interindividual variability in the rate and extent of progression to AIDS in HIV-ECs (3). Thus, most patients have elevated CD4+ T-cells count, stable CD4+ T-cell trajectories, and more favorable clinical outcomes compared with viremic patients; but a subgroup of HIV-ECs may progress to AIDS with CD4+ T-cells decline and/or loss of virologic control (4). In this regard, HIV-ECs showed lower marker levels of inflammatory and immune activation than HIV viremic controllers (HIV-VCs) (5, 6).

There is evidence of ongoing inflammation, bacterial translocation, T-cells activation, and CD4+ T-cells depletion on HIV-ECs, suggesting that this natural long-term HIV control may have an immunologic and clinical cost (3, 7–10). Chronic immune activation associated with HIV infection may lead to fibrosis in the lymphoid tissues, where HIV replicates, for dramatically altering the structure and function, giving rise to a progressive loss of CD4+ T-cells, particularly in the naïve T-cells subset (11, 12). In this regard, HIV-ECs also have significant lymphoid tissue fibrosis and CD4+ T-cells depletion at lymphoid tissue, similar to HIV non-controllers (13).

The role of immune activation in HIV-1 pathogenesis has been broadly analyzed, but immune activation in HIV disease progression is not well characterized in HIV-ECs. The aim of our study was to analyze the relationship between plasma inflammatory biomarkers and CD4+ T-cells evolution in HIV-ECs with a suppressed viremia.

MATERIALS AND METHODS

Patients

We carried out a retrospective study with 30 HIV-ECs from the cohort of HIV controllers of the Spanish AIDS Research Network (ECRIS cohort), launched in 2013. ECRIS is a multi-centre cohort of HIV controller patients whose data come from the long-term non-progressors cohort, the cohort of the Spanish AIDS Research Network (CoRIS) (3), and from different clinical centers (see Appendix S1 in Supplementary Material). To be included in ECRIS cohort, EC patients were defined as asymptomatic individuals with at least three consecutive plasma HIV viral load (pVL) determinations below the detection limit (pVL < 50 copies/ml) during a period of 12 months in the absence of any antiretroviral therapy. Characteristics of the ECRIS cohort have been described in detail elsewhere (3).

The study protocol was approved by the Institutional Review Boards of the participating hospitals. All patients gave

written informed consent in accordance with the Declaration of Helsinki.

Starting from this cohort, we selected HIV-ECs that had long-term control of HIV replication (minimum of 3 years), during which the evolution of their CD4+ T-cells levels was evaluated and with baseline plasma sample available for study. For each patient, a slope of CD4+ T-cells was calculated by linear regression models with all CD4+ T-cells count throughout the time of each patient's follow-up. Based on this CD4+ T-cells slope, the study patients were classified into two groups: those who showed no significant ($p \geq 0.05$) loss of CD4+ T-cells during the observation period (stable CD4+, $n = 19$) and those who had a significant decrease ($p < 0.05$) in the levels of CD4+ T-cells (decline CD4+, $n = 11$).

The clinical and epidemiological data were provided by ECRIS cohort. Furthermore, samples from patients were kindly provided by the Spanish HIV HGM BioBank integrated in the Spanish AIDS Research Network (RIS) (14). Samples were processed following current procedures and were frozen at -80°C immediately after their reception (14). The first biological sample available after the inclusion of each patient in the cohort was used for laboratory assays.

Multiplex ELISA

Multiplex kits (ProcartaPlex™ Multiplex Immunoassay; Affymetrix eBioscience, San Diego, CA, USA) were used to specifically evaluate plasma biomarkers according to the manufacturer's specifications using the Luminex 100™ analyzer (Luminex Corporation, Austin, TX, USA). The kits used were Affymetrix Human Chemokine 9plex panel [Eotaxin (CCL11), GRO- α (KC/CXCL1), IL-8 (CXCL8), IP-10 (CXCL10), MCP-1 (CCL2), MIP- α (CCL3), MIP- β (CCL4), RANTES (CCL5), and SDF-1 α (CXCL12)], ProcartaPlex Simplex [TNF- β , IL-18, sFas (APO), sTNF-RI, TRAIL, and sFasL], and ProcartaPlex High Sensitivity (IL-6, IL-10, and TNF- α).

Statistical Analysis

The statistical analysis was performed with the Statistical Package for the Social Sciences (SPSS) 21.0 (SPSS Inc., Chicago, IL, USA). Statistical significance was defined as $p < 0.05$. All p -values were two-tailed. Values were expressed as absolute number (percentage) and median (25th; 75th percentile).

Categorical data and proportions were analyzed using the chi-squared test or Fisher's exact test (when expected values were below 5). Mann-Whitney U test was used to compare data among independent groups (stable CD4+ vs. decline CD4+). Correlation was analyzed using the Pearson correlation coefficient.

We used the logistic regression analysis to test the association between levels of plasma inflammatory biomarkers and the two study groups according to the evolution of CD4+ T-cells slope (stable CD4+ vs. decline CD4+). When a significant association value was obtained, we saved the value of predicted probability for each patient and we evaluated the diagnostic performance of plasma biomarkers for predicting the evolution of CD4+ T-cells using the receiver operating characteristic (ROC) curve. We also calculated the sensitivity (Se), specificity (Sp), positive predictive value (PPV), and negative predictive

value (NPV) for analyzing the cut-off point of the highest values (75th percentile).

RESULTS

Study Population

The characteristics of the 30 HIV-ECs with sustained viremia control (19 with stable CD4+ T cells count and 11 with decreasing CD4+ T cells count) are shown in **Table 1**. Overall, the median age was 41 years, 43.3% were males, and more than 40% were coinfecting with hepatitis C virus (HCV). The CD4+ T-cells count at the beginning of the follow-up was 959 cells/ μ l and the time of follow-up was 12 years. Several characteristics were similar in the two groups of HIV-ECs, except for the slope of CD4+ T-cells, the CD4+ T-cell count at the end of follow-up, and a slight difference in time of follow-up.

Relationship Analysis

We found baseline plasma levels of sTNF-R1 (**Figure 1A**) and CCL11 (**Figure 1B**) correlated with the slope of CD4+ T-cells (cells/ μ l/year) during the follow-up [$r = -0.370$ ($p = 0.043$) and $r = -0.314$ ($p = 0.091$), respectively]. Besides, sTNF-R1/TNF- α ratio also showed a significant negative correlation with the slope of CD4+ T-cells [$r = -0.381$ ($p = 0.038$)]. An absence of correlation was found between sTNF-R1 and CCL11 [$r = 0.327$ ($p = 0.078$)].

Diagnostic Performance

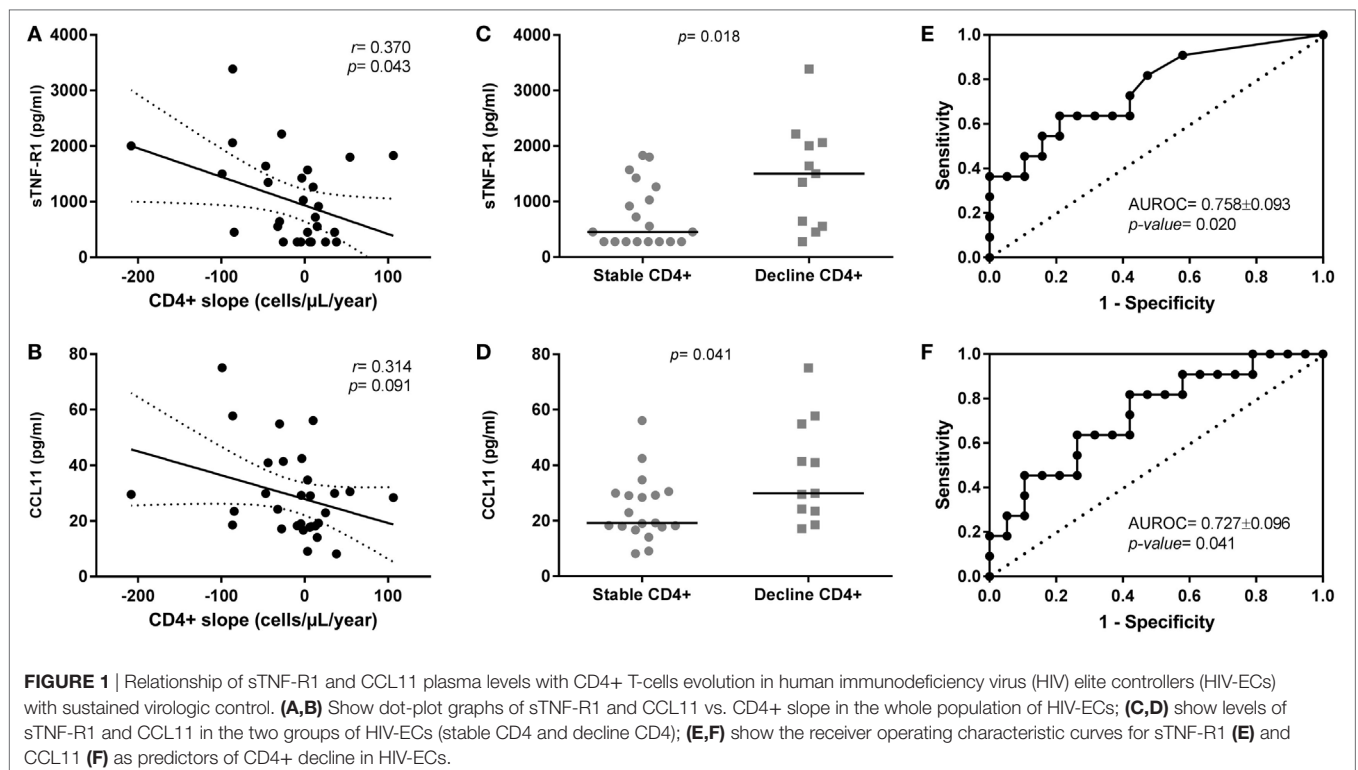
We analyzed the differences between groups and the diagnostic performance of plasma biomarkers on the evolution of CD4+ T cells count (full data in Table S1 in Supplementary Material).

We found that HIV-ECs with decline CD4+ T-cells had higher baseline plasma levels of sTNF-R1 [1,500.7 (555.7; 2,060.7) pg/ml

TABLE 1 | Characteristics of HIV-infected patients included in the study.

Characteristic	All patients	Stable CD4+	Decline CD4+	p-Value
No.	30	19	11	
Age (years)	41 (36; 47)	40 (33; 46)	42 (38; 48)	0.324
Gender (males)	13 (43.3%)	5 (26.3%)	7 (63.6%)	0.104
Presence of HCV coinfection	13 (43.3%)	9 (57.9%)	4 (54.5%)	0.842
CD4+ T-cell count (cells/ μ l) at beginning of follow-up	959 (793; 1,147)	856 (675; 1,145)	1,053 (850; 1,153)	0.130
Follow-up (years)	12 (8.5; 12.3)	12 (11; 13)	11 (6; 12)	0.047
CD4+ T-cell slope (cells/ μ l/year) during follow-up	-2.5 (-35; 13)	8 (-2; 54)	-47 (-86; -30)	<0.0001
CD4+ T-cell count (cells/ μ l) at the end of follow-up	816 (632; 1,110)	1,005 (725; 1,190)	633 (503; 978)	0.016
Number of HIV-RNA blips (pVL > 50 copies/ml)	1 (0; 2)	1 (0; 2)	1 (0; 2)	0.497

Values were expressed as median (percentile 25; percentile 75) for quantitative variables, and as absolute number (percentage) for qualitative variables. HCV, hepatitis C virus; HIV, human immunodeficiency virus.



vs. 450.8 (227.9; 1,263.9) pg/ml; $p = 0.018$] and CCL11 [29.8 (23.5; 54.9) vs. 19.2 (17.8; 29.9) pg/ml; $p = 0.041$] than HIV-1 ECs with stable CD4+ T-cells (Figures 1C,D; respectively). Moreover, we found that the baseline ratio of sTNF-R1/TNF- α was higher in HIV-ECs with decline CD4+ T-cells [84.7 (33.2; 124.2) vs. 25.9 (16.3; 75.1); $p = 0.012$] than HIV-1 ECs with stable CD4+ T-cells.

The area under receiver operating characteristic curve (AUROC) of sTNF-R1 was 0.758 ± 0.093 ($p = 0.020$) (Figure 1E) and of CCL11 was 0.727 ± 0.096 ($p = 0.041$) (Figure 1F) for predicting the CD4+ T-cells loss in HIV-ECs. The AUROC was 0.789 ± 0.084 ($p = 0.009$) for the two molecules together (sTNF-R1 and CCL11). That is, there was practically no improvement in the value of AUROC with respect to each biomarker separately. Moreover, we found that the AUROC for baseline ratio of sTNF-R1/TNF- α was 0.777 ± 0.087 ($p = 0.013$).

Using the cut-off of 75th percentile for sTNF-R1 (1,589.28 pg/ml), CCL11 (36.31 pg/ml), and sTNF-R1/TNF- α (91.1), these three biomarkers showed similar values: the Se was 45.5%, the Sp was 89.5%, the PPV was 71.4%, and the NPV was 73.9%.

DISCUSSION

In this study, we found a relationship of two plasma inflammatory biomarkers (sTNF-R1 and CCL11) with the CD4+ slopes during the long-term control of HIV replication in our cohort of HIV-ECs.

The immune activation is a hallmark of HIV-1 disease and the role of immune activation in HIV-1 pathogenesis and immune dysfunction is recognized (15). Previous reports have characterized immune activation during HIV-1 infection and attempted to determine the relationship with CD4+ T-cells loss and AIDS progression (16, 17). Additionally, HIV-ECs maintain control of plasma HIV viremia, but have evidence of an activated innate immune response (7). In a recent article, a subtle decline of % CD4+ T-cells was observed in HIV-VCs, but not in HIV-ECs, which was associated with higher plasma levels of proinflammatory cytokines (5). Moreover, Pernas et al. showed that RANTES, and to a lesser extent CCL24 (eotaxin-2), could be biomarkers of EC transition from natural virological control to the loss of virological control (18), since higher levels of chemokines could reflect higher low-level residual HIV replication (19). The mechanisms underlying CD4+ T-cells loss and AIDS progression in HIV-ECs are poorly understood and are likely to be multifactorial. The viral replication is not completely suppressed in HIV-ECs and persistent low-level of HIV replication in HIV-ECs may be responsible for the increase of T-cell activation and systemic inflammation (2, 20), which have been related to fall of CD4+ T-cells count and AIDS progression among HIV-infected patients (21, 22). HIV-ECs have also elevated markers of microbial translocation compared with either the HIV-suppressed or the uninfected groups, which may induce immune activation and systemic inflammation (10), and antiretroviral therapy diminished levels of residual viremia and T-cell activation (23).

In our study, higher values of plasma CCL11 were linked to CD4+ T-cells loss; while low values of CCL11 were associated with stable CD4+ T-cells count during the long-term follow-up.

In previous studies, plasma levels of CCL11 have been related to a worse virological outcome during primary HIV-1 infection and post analytical treatment interruption (24). Moreover, CCL11 has also previously been associated with more rapid CD4 loss below 350 cells/ μ l during acute HIV-1 infection (25). It indicates that the influence of CCL11 on the risk of CD4 loss occurs also in other HIV-infected populations. However, it is important to note that other studies did not find any association between CCL11 and HIV disease progression (viral load and CD4 count) (26). CCL11 is a chemokine that selectively attracts lymphocytes through chemokine receptors (CCR3 and CCR5), which are also HIV co-receptors (27). Thus, CCL11 may have an anti-HIV effect through its binding capacity to one of HIV coreceptors (27–29), but also its chemotactic ability on CD4+ T-cells may also serve to recruit targets for HIV infection (30). In fact, elevated CCL11 levels in placental plasma were associated with *in utero* mother-to-child transmission (31).

TNF- α is an important mediator of immune activation driven by high levels of HIV replication, which is linked to CD4+ T-cells loss and HIV-1 disease progression (32). TNF-R1 mediates most of the cellular responses induced by TNF- α and may circulate in soluble form after its proteolytic cleavage (sTNF-R1), binding to the circulating TNF- α and inhibiting its activity (negative feedback) (33). In our study, higher plasma values of sTNF-R1 and sTNF-R1/TNF- α ratio were associated with falls of CD4+ T-cells in HIV-ECs; while values of TNF- α did not correlate with CD4+ T-cells slopes. This would indicate that the biomarker actually associated with the loss of CD4+ T-cells is sTNF-R1, perhaps because plasma TNF- α could be neutralized by sTNF-R1. In any case, higher values of sTNF-R1 would indicate higher levels of inflammation and immune activation, which impact both viral replication and viral persistence, and CD4+ T-cells loss (34). Besides, higher levels of sTNF-R1 have been related to a poor immune response to successful antiretroviral therapy (35) and poor response to hepatitis B virus vaccine (36) in HIV-infected patients. Additionally, similarly to CCL11, the association between higher TNF-R1 level and poor CD4+ T cell recovery has been previously described, indicating that this finding could be also applicable to other HIV-infected populations (35).

Our data showed that plasma sTNF-R1 and CCL11 values were accurate for the prediction of the CD4+ T-cells loss, since the AUROC value was close to 0.75, which supports its acceptable ability to discriminate HIV-ECs in risk of losing CD4+ T-cells. Furthermore, the cut-offs evaluated in our study showed values of NPV and PPV higher than 70%, which could be acceptable for excluding a CD4+ T-cells loss or for predicting it; respectively. Thus, these inflammatory biomarkers could help manage HIV-ECs in the clinical setting.

Finally, several aspects have to be taken into account for the correct interpretation of the results. First, the retrospective nature of design might introduce biases in the analysis and a lack of uniformity. Second, this is a preliminary study with a limited number of patients, which limits for achieving statistically significant differences. It is remarkable that, among 18 biomarkers, only two were related to the loss of CD4+ T-cells in HIV-ECs. With a higher number of subjects included in this study, possibly more biomarkers would be identified. Third, the high number

of biomarkers analyzed, coupled to the low number of patients included, penalize for achieving significant differences when we adjusted the p -values by multiple comparisons (Bonferroni correction). Fourth, the different definitions of HIV-ECs could influence on the results obtained and the compatibility with other studies.

In conclusion, the loss of CD4+ T-cells in HIV-ECs was associated with higher levels of two plasma inflammatory biomarkers (sTNF-R1 and CCL11), which were also reasonably accurate for the prediction of the CD4+ T-cells loss. Further analysis involving large numbers of patients in independent cohorts are needed to corroborate these associations and to understand the mechanism leading to increased sTNF-R1 and CCL11 production, as well as to determine any long-term impact on immune dysfunction.

ETHICS STATEMENT

The study protocol was approved by the Institutional Review Boards of the participating hospitals. All subjects gave written informed consent in accordance with the Declaration of Helsinki.

AUTHOR CONTRIBUTIONS

Conceptualization: NR, JB, and SR. Resources and data curation: NR, JB, CR, AL, JJ, MM-A, JG-G, MM-F. Investigation and writing—original draft preparation: MG-R, MJ-S, and SR. Formal analysis: SR. Writing—review and editing: NR and JB. Visualization, supervision, and funding acquisition: NR, JB, and SR.

ACKNOWLEDGMENTS

We want to particularly acknowledge the patients in this study for their participation and to the HIV BioBank integrated in the Spanish AIDS Research Network (RIS) and collaborating Centres for the generous gifts of clinical samples used in this work. The HIV BioBank, integrated in the Spanish AIDS Research Network, is supported by Institute of Health Carlos III, ISCIII, Spanish Health Ministry (Grant no. RD06/0006/0035 and RD12/0017/0037) as part of the State Plan for Scientific and Technical Research and Innovation and cofinanced by ISCIII-Sub-Directorate General for Research Assessment and Promotion and European Regional Development Fund (ERDF) and Foundation for Research and Prevention of AIDS in Spain (FIPSE). This study would not have

been possible without the collaboration of all the patients, medical and nursery staff and data managers who have taken part in the project (see Appendix S1 in Supplementary Material). The RIS Cohort (CoRIS) is funded by the ISCIII through the Spanish AIDS Research Network (RIS C03/173 and RD12/0017/0018) as part of the State Plan for Scientific and Technical Research and Innovation and cofinanced by ISCIII-Sub-Directorate General for Research Assessment and Promotion and European Regional Development Fund (ERDF).

FUNDING

This work has been (partially) funded by the RD12/0017/0037, RD12/0017/0031, RD12/0017/0024, RD16CIII/0002/0002, and RD16/0025/0019 and RD16/0025/0013 project as part of the Health Research and Development Strategy, State Plan for Scientific and Technical Research and Innovation (2008–2011; 2013–2016) and cofinanced by Institute of Health Carlos III, ISCIII—Sub-Directorate General for Research Assessment and Promotion and European Regional Development Fund (ERDF), RETIC PT13/0010/0028, Fondo de Investigación Sanitaria (FIS) (grant number PI13/02016; PI16/01863, PI14/00882, PI14CIII/00011), CYTED 214RT0482. EPIICAL Project. CIBERBBN is an initiative funded by the VI National R&D&I Plan 2008–2011, Iniciativa Ingenio 2010, the Consolider Program, and CIBER Actions and financed by the Instituto de Salud Carlos III with assistance from the European Regional Development Fund. This work was supported partially by a Marie Curie International Research Staff Exchange Scheme Fellowship within the seventh European Community Framework Program, project No. PIRSES-GA-2012-316730 NANOGENE, co-financed by the Polish Ministry of Science and Higher Education (grant No. W21/7PR/2013). “Programa de Investigación de la Consejería de Sanidad de la Comunidad de Madrid” to JJ. MJ-S and NR are supported by Institute of Health Carlos III (grant numbers CD13/00013 and CP14/00198, respectively), CR was funded by project RD12/0017/0031 and is currently funded by project RD16/0025/0013.

SUPPLEMENTARY MATERIAL

The Supplementary Material for this article can be found online at <https://www.frontiersin.org/articles/10.3389/fimmu.2018.01399/full#supplementary-material>.

REFERENCES

- O'Brien WA, Hartigan PM, Martin D, Esinhart J, Hill A, Benoit S, et al. Changes in plasma HIV-1 RNA and CD4+ lymphocyte counts and the risk of progression to AIDS. Veterans affairs cooperative study group on AIDS. *N Engl J Med* (1996) 334(7):426–31. doi:10.1056/NEJM199602153340703
- Crowell TA, Hatano H. Clinical outcomes and antiretroviral therapy in 'elite' controllers: a review of the literature. *J Virus Erad* (2015) 1(2):72–7.
- Leon A, Perez I, Ruiz-Mateos E, Benito JM, Leal M, Lopez-Galindez C, et al. Rate and predictors of progression in elite and viremic HIV-1 controllers. *AIDS* (2016) 30(8):1209–20. doi:10.1097/QAD.0000000000001050
- Okulicz JF, Lambotte O. Epidemiology and clinical characteristics of elite controllers. *Curr Opin HIV AIDS* (2011) 6(3):163–8. doi:10.1097/COH.0b013e328344f35e
- Platten M, Jung N, Trapp S, Flossdorf P, Meyer-Olson D, Schulze Zur Wiesch J, et al. Cytokine and chemokine signature in elite versus viremic controllers infected with HIV. *AIDS Res Hum Retroviruses* (2016) 32(6):579–87. doi:10.1089/AID.2015.0226
- Groves KC, Bibby DF, Clark DA, Isaksen A, Deayton JR, Anderson J, et al. Disease progression in HIV-1-infected viremic controllers. *J Acquir Immune Defic Syndr* (2012) 61(4):407–16. doi:10.1097/QAI.0b013e318269c414
- Krishnan S, Wilson EM, Sheikh V, Rupert A, Mendoza D, Yang J, et al. Evidence for innate immune system activation in HIV type 1-infected elite controllers. *J Infect Dis* (2014) 209(6):931–9. doi:10.1093/infdis/jit581
- Hunt PW, Brenchley J, Sinclair E, McCune JM, Roland M, Page-Shafer K, et al. Relationship between T cell activation and CD4+ T cell count in HIV-seropositive individuals with undetectable plasma HIV RNA levels in the absence of therapy. *J Infect Dis* (2008) 197(1):126–33. doi:10.1086/524143

9. Pereyra F, Lo J, Triant VA, Wei J, Buzon MJ, Fitch KV, et al. Increased coronary atherosclerosis and immune activation in HIV-1 elite controllers. *AIDS* (2012) 26(18):2409–12. doi:10.1097/QAD.0b013e32835a9950
10. Li JZ, Arnold KB, Lo J, Dugast AS, Plants J, Ribaudo HJ, et al. Differential levels of soluble inflammatory markers by human immunodeficiency virus controller status and demographics. *Open Forum Infect Dis* (2015) 2(1):ofu117. doi:10.1093/ofid/ofu117
11. Wang X, Ziani W, Xu H. Changes in follicular CD4+ T helper cells as a marker for evaluating disease progression in the competition between HIV and host immunity. *Front Immunol* (2016) 7:474. doi:10.3389/fimmu.2016.00474
12. Zeng M, Smith AJ, Wietgreffe SW, Southern PJ, Schacker TW, Reilly CS, et al. Cumulative mechanisms of lymphoid tissue fibrosis and T cell depletion in HIV-1 and SIV infections. *J Clin Invest* (2011) 121(3):998–1008. doi:10.1172/JCI45157
13. Sanchez JL, Hunt PW, Reilly CS, Hatano H, Beilman GJ, Khoruts A, et al. Lymphoid fibrosis occurs in long-term nonprogressors and persists with antiretroviral therapy but may be reversible with curative interventions. *J Infect Dis* (2015) 211(7):1068–75. doi:10.1093/infdis/jiu586
14. Garcia-Merino I, de Las Cuevas N, Jimenez JL, Gallego J, Gomez C, Prieto C, et al. The Spanish HIV BioBank: a model of cooperative HIV research. *Retrovirology* (2009) 6:27. doi:10.1186/1742-4690-6-27
15. Dagenais-Lussier X, Mouna A, Routy JP, Tremblay C, Sekaly RP, El-Far M, et al. Current topics in HIV-1 pathogenesis: the emergence of deregulated immuno-metabolism in HIV-infected subjects. *Cytokine Growth Factor Rev* (2015) 26(6):603–13. doi:10.1016/j.cytogfr.2015.09.001
16. Noel N, Boufassa F, Lecuroux C, Saez-Cirion A, Bourgeois C, Dunyach-Remy C, et al. Elevated IP10 levels are associated with immune activation and low CD4(+) T-cell counts in HIV controller patients. *AIDS* (2014) 28(4):467–76. doi:10.1097/QAD.0000000000000174
17. Doitsh G, Greene WC. Dissecting how CD4 T cells are lost during HIV infection. *Cell Host Microbe* (2016) 19(3):280–91. doi:10.1016/j.chom.2016.02.012
18. Pernas M, Tarancon-Diez L, Rodriguez-Gallego E, Gomez J, Prado JG, Casado C, et al. Factors leading to the loss of natural elite control of HIV-1 infection. *J Virol* (2018) 92(5):e01805-17. doi:10.1128/JVI.01805-17
19. Nakayama K, Nakamura H, Koga M, Koibuchi T, Fujii T, Miura T, et al. Imbalanced production of cytokines by T cells associates with the activation/exhaustion status of memory T cells in chronic HIV type 1 infection. *AIDS Res Hum Retroviruses* (2012) 28(7):702–14. doi:10.1089/AID.2011.0073
20. Pereyra F, Palmer S, Miura T, Block BL, Wiegand A, Rothchild AC, et al. Persistent low-level viremia in HIV-1 elite controllers and relationship to immunologic parameters. *J Infect Dis* (2009) 200(6):984–90. doi:10.1086/605446
21. Younas M, Psomas C, Reynes J, Corbeau P. Immune activation in the course of HIV-1 infection: causes, phenotypes and persistence under therapy. *HIV Med* (2016) 17(2):89–105. doi:10.1111/hiv.12310
22. Hunt PW, Cao HL, Muzoora C, Ssewanyana I, Bennett J, Emenyonu N, et al. Impact of CD8+ T-cell activation on CD4+ T-cell recovery and mortality in HIV-infected Ugandans initiating antiretroviral therapy. *AIDS* (2011) 25(17):2123–31. doi:10.1097/QAD.0b013e32834c4ac1
23. Hatano H, Yukl SA, Ferre AL, Graf EH, Somsouk M, Sinclair E, et al. Prospective antiretroviral treatment of asymptomatic, HIV-1 infected controllers. *PLoS Pathog* (2013) 9(10):e1003691. doi:10.1371/journal.ppat.1003691
24. Barqasho B, Nowak P, Tjernlund A, Kinloch S, Goh LE, Lampe F, et al. Kinetics of plasma cytokines and chemokines during primary HIV-1 infection and after analytical treatment interruption. *HIV Med* (2009) 10(2):94–102. doi:10.1111/j.1468-1293.2008.00657.x
25. Roberts L, Passmore JA, Williamson C, Little F, Bebell LM, Mlisana K, et al. Plasma cytokine levels during acute HIV-1 infection predict HIV disease progression. *AIDS* (2010) 24(6):819–31. doi:10.1097/QAD.0b013e3283367836
26. Song W, Li Y, Wilson CM, Tang J. Identification of three immunologic correlates for HIV type 1 pathogenesis in youth. *AIDS Res Hum Retroviruses* (2011) 27(6):639–46. doi:10.1089/AID.2010.0161
27. Choe H, Farzan M, Sun Y, Sullivan N, Rollins B, Ponath PD, et al. The beta-chemokine receptors CCR3 and CCR5 facilitate infection by primary HIV-1 isolates. *Cell* (1996) 85(7):1135–48. doi:10.1016/S0092-8674(00)81313-6
28. Blanpain C, Migeotte I, Lee B, Vakili J, Doranz BJ, Govaerts C, et al. CCR5 binds multiple CC-chemokines: MCP-3 acts as a natural antagonist. *Blood* (1999) 94(6):1899–905.
29. Promadej-Lanier N, Hanson DL, Srinivasan P, Luo W, Adams DR, Guenther PC, et al. Resistance to Simian HIV infection is associated with high plasma interleukin-8, RANTES and Eotaxin in a macaque model of repeated virus challenges. *J Acquir Immune Defic Syndr* (2010) 53(5):574–81. doi:10.1097/QAI.0b013e3181d3521f
30. Foley JF, Yu CR, Solow R, Yacobucci M, Peden KW, Farber JM. Roles for CXC chemokine ligands 10 and 11 in recruiting CD4+ T cells to HIV-1-infected monocyte-derived macrophages, dendritic cells, and lymph nodes. *J Immunol* (2005) 174(8):4892–900. doi:10.4049/jimmunol.174.8.4892
31. Kumar SB, Rice CE, Milner DA Jr, Ramirez NC, Ackerman WE IV, Mwapasa V, et al. Elevated cytokine and chemokine levels in the placenta are associated with in-utero HIV-1 mother-to-child transmission. *AIDS* (2012) 26(6):685–94. doi:10.1097/QAD.0b013e3283519b00
32. Vaidya SA, Korner C, Sirignano MN, Amero M, Bazner S, Rychert J, et al. Tumor necrosis factor alpha is associated with viral control and early disease progression in patients with HIV type 1 infection. *J Infect Dis* (2014) 210(7):1042–6. doi:10.1093/infdis/jiu206
33. Aderka D, Engelmann H, Maor Y, Brakebusch C, Wallach D. Stabilization of the bioactivity of tumor necrosis factor by its soluble receptors. *J Exp Med* (1992) 175(2):323–9. doi:10.1084/jem.175.2.323
34. Pasquereau S, Kumar A, Herbein G. Targeting TNF and TNF receptor pathway in HIV-1 infection: from immune activation to viral reservoirs. *Viruses* (2017) 9(4):E64. doi:10.3390/v9040064
35. Richert Q, Trajtman A, Arroyave L, Toews J, Becker M, Kasper K, et al. Systemic inflammation before and after antiretroviral therapy initiation as a predictor of immune response among HIV-infected individuals in Manitoba. *Cytokine* (2017) 91:74–81. doi:10.1016/j.cyto.2016.12.010
36. Younas M, Carrat F, Desaint C, Launay O, Corbeau P, ANRS HB03 VIH-VAC-B Trial Group. Immune activation, smoking, and vaccine response. *AIDS* (2017) 31(1):171–3. doi:10.1097/QAD.00000000000001311

Conflict of Interest Statement: The authors declare that the research was conducted without any commercial or financial relationships that could be construed as a potential conflict of interest.

Copyright © 2018 Gutiérrez-Rivas, Jiménez-Sousa, Rallón, Jiménez, Restrepo, León, Montero-Alonso, González-García, Muñoz-Fernández, Benito and Resino. This is an open-access article distributed under the terms of the Creative Commons Attribution License (CC BY). The use, distribution or reproduction in other forums is permitted, provided the original author(s) and the copyright owner are credited and that the original publication in this journal is cited, in accordance with accepted academic practice. No use, distribution or reproduction is permitted which does not comply with these terms.